

US Tech
FCC ID:
IC:
Test Report Number:
Issue Date:
Customer:
Model:

FCC P15/IC RSS Certification
2ACAJ-WHUB2
11938A-WHUB2
16-0217
September 2, 2016
Wink Labs, Inc.
Wink Hub 2

Internal Photographs

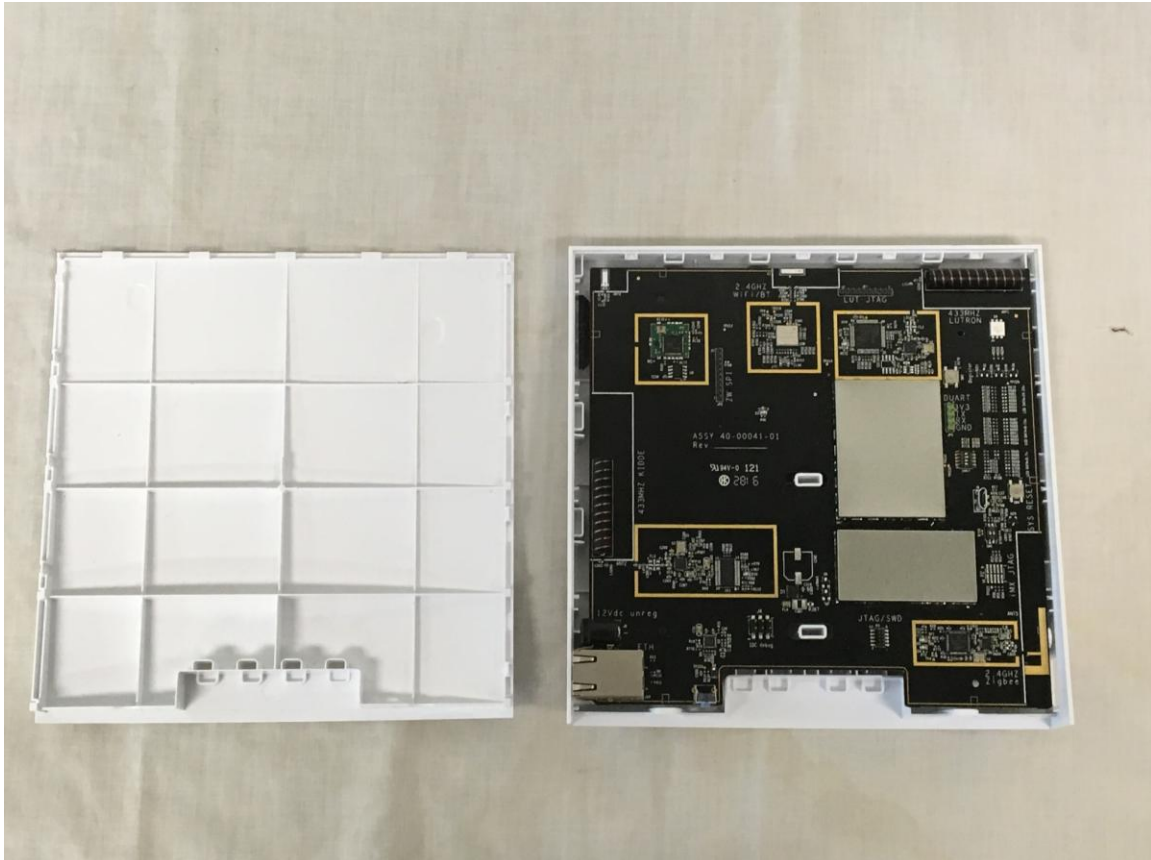


Figure 1. Front of PCB, Enclosure Cover Removed

US Tech
FCC ID:
IC:
Test Report Number:
Issue Date:
Customer:
Model:

FCC P15/IC RSS Certification
2ACAJ-WHUB2
11938A-WHUB2
16-0217
September 2, 2016
Wink Labs, Inc.
Wink Hub 2

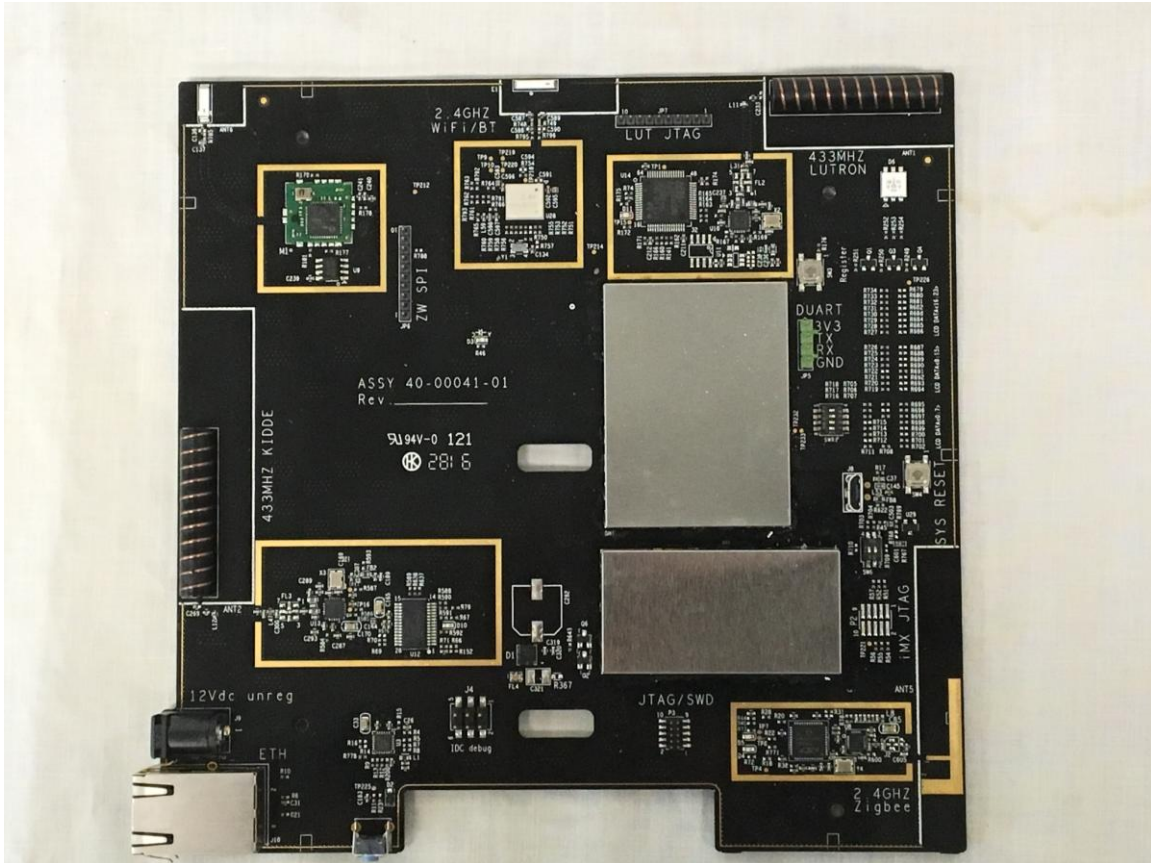


Figure 3. Front of PCB

US Tech
FCC ID:
IC:
Test Report Number:
Issue Date:
Customer:
Model:

FCC P15/IC RSS Certification
2ACAJ-WHUB2
11938A-WHUB2
16-0217
September 2, 2016
Wink Labs, Inc.
Wink Hub 2

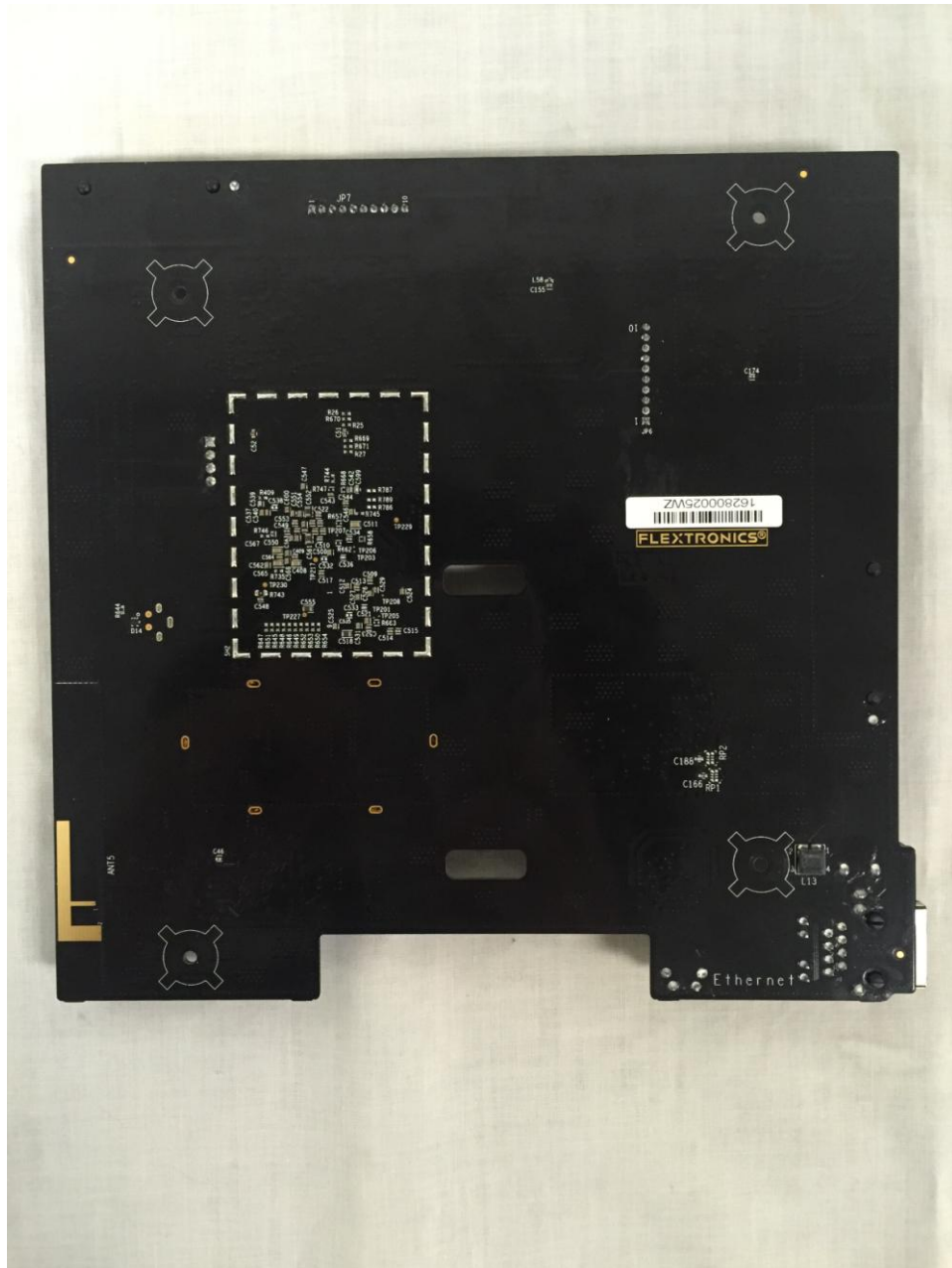


Figure 4. Back of PCB

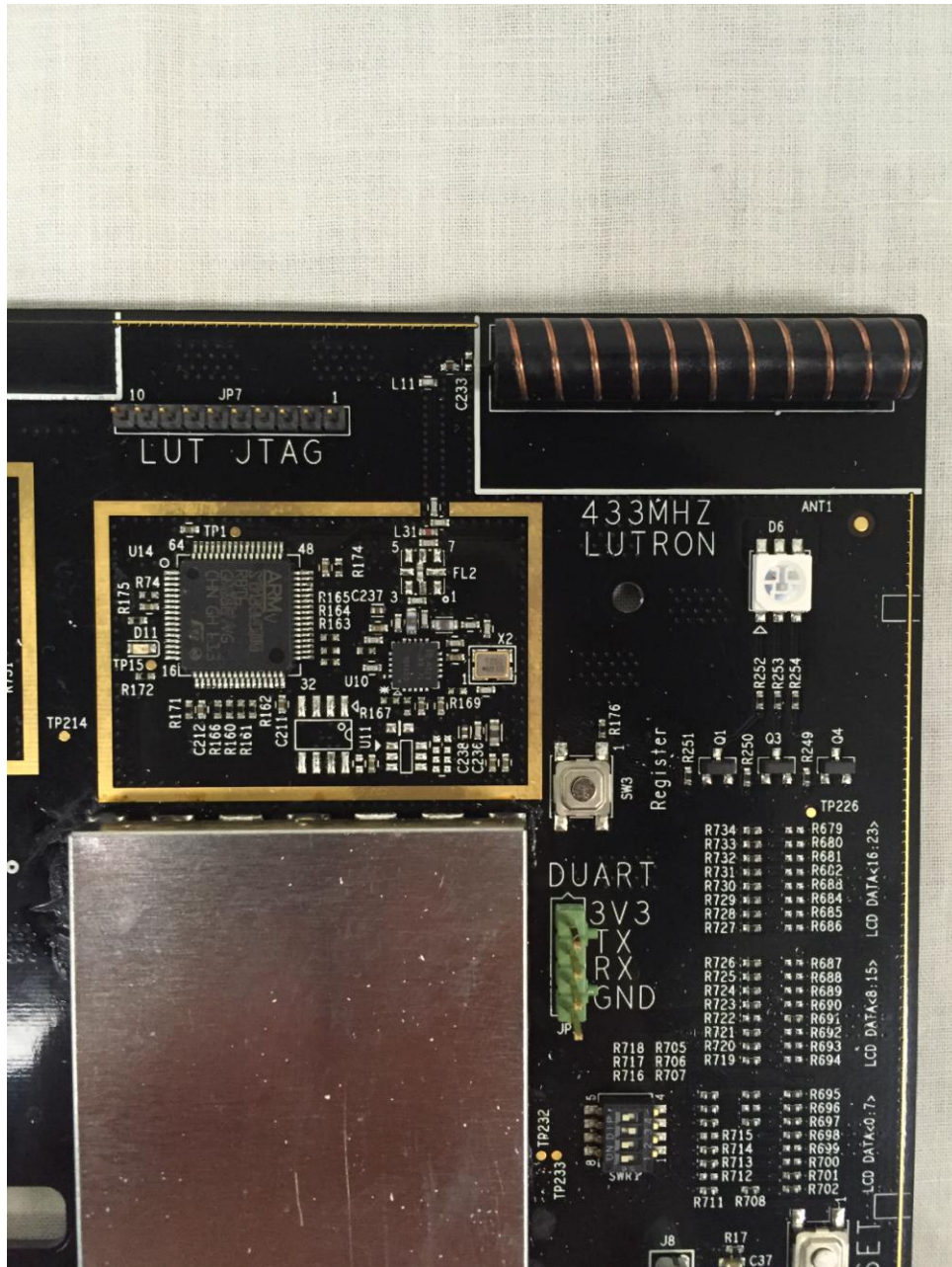


Figure 2. Lutron Radio (431 MHz)

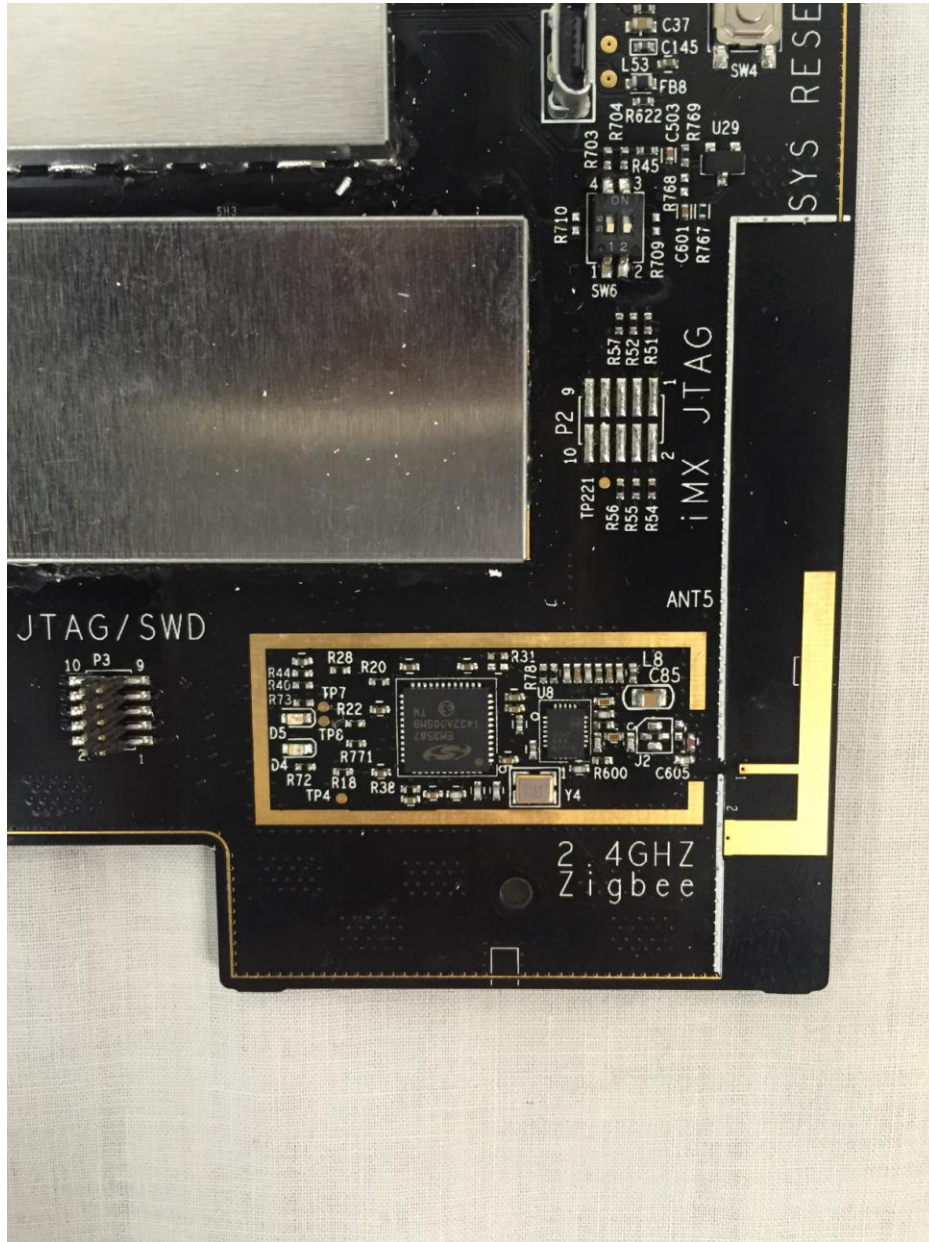


Figure 3. Zigbee Radio (2400 MHz - 2483.5 MHz)

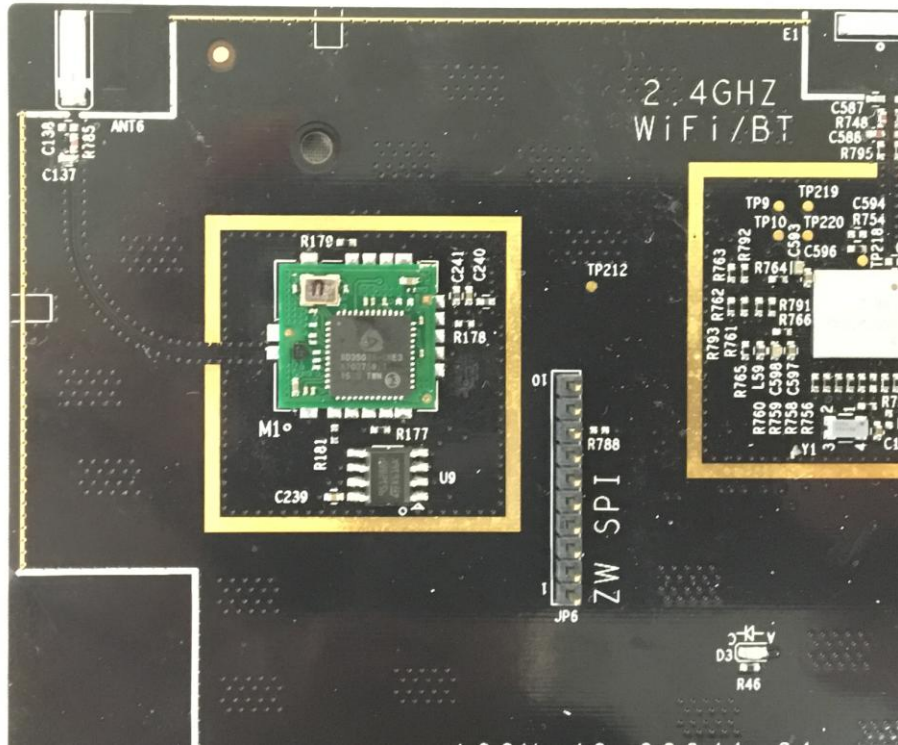


Figure 5. Z-Wave Radio (902 MHz - 928 MHz)

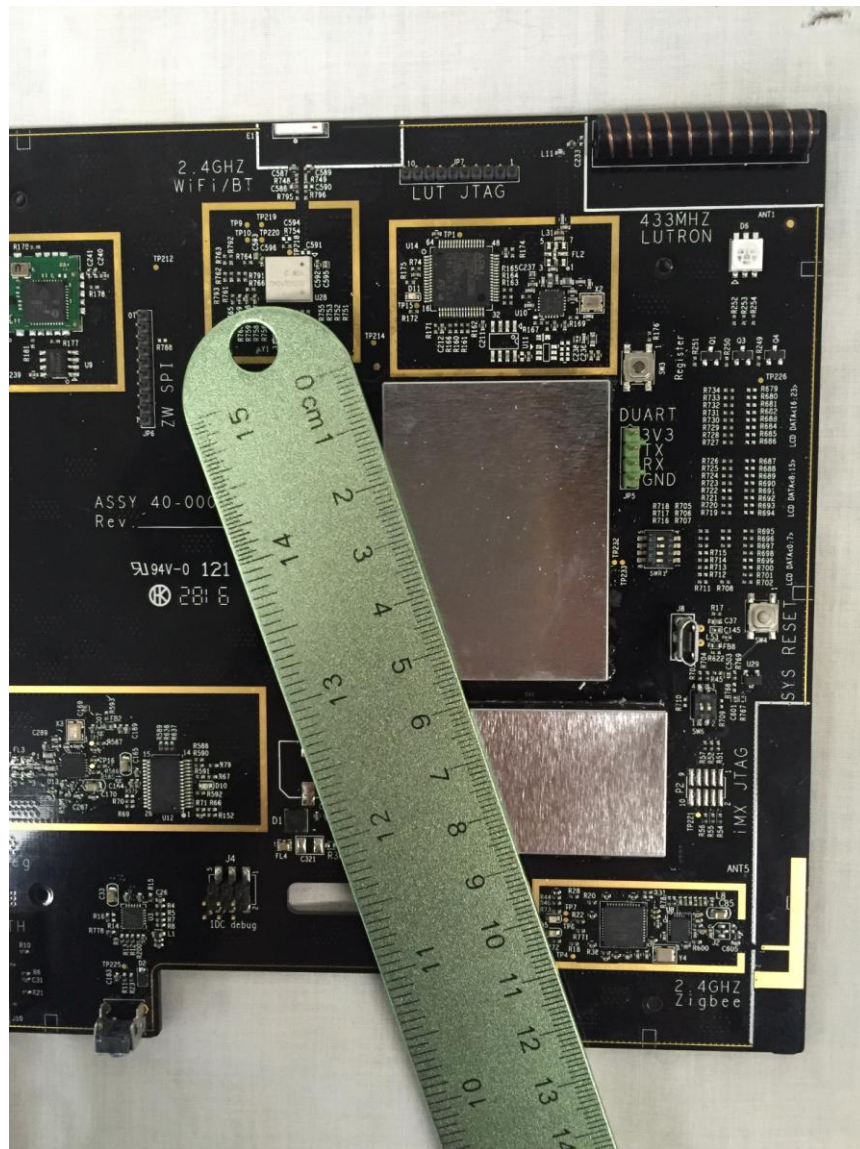


Figure 10. Separation Distance Between BlueTooth and Zigbee Radios