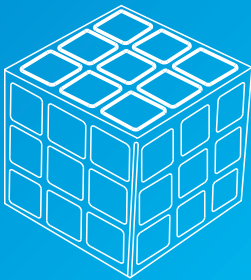




Accessories For Daily Life Best of the Best



CUBE

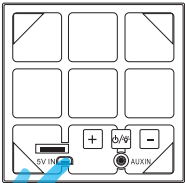


Cube音箱

- USB充电电线
- 3.5毫米音频电线
- 用户指南

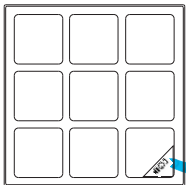
为你的音箱充电

请使用随带的USB充电电线来为你的音箱充电，将micro端插入位于扬声器后方插槽（5VIN），另一端插入任何有通电的USB端口。你可以使用任何USB Ac变压器来为你的音箱充电。



开机播放音乐

1. 确保你的音箱是充满电状态。
2. 长按音箱顶部的（多功能）按键3秒开机提示音过后，蓝灯闪烁机子开始启动并自动进入配对状态。
3. 在你要和本机配对的设备上，打开蓝牙搜索列表你的设备会发现(BT- Cube)的设备名称进行配对，一旦连接上时本机发出配对成功提示音。
4. 开机连接成功时，快速短按（多功能键）本机会自动拨打上一次电话号码，在通话过程中如要挂断当前电话，短按多功能键一下，如有来电短按多功能键一下就可接听当前电话了。
5. 如要关闭本机再长按（多功能）键三秒，关机提示音过后LED音熄灭本机自动进入关机状态。

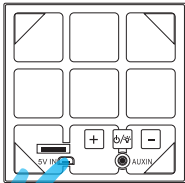


PACKING CONTENTS

- Cube Speaker system
- USB Charge Cable
- User Manual

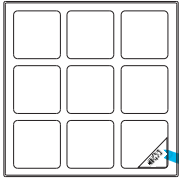
CHARGING SPEAKER

Charge speaker with the included USB charger cable. Plug the micro end into the socket(5V IN)on the bottom of the speaker and the other end into a power USB port like on a computer . You may use USB AC adapter that is available to charge your speaker .



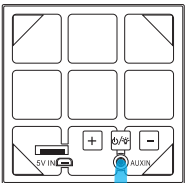
Music Play in power on

1. Make sure your speaker is fully charged.
2. To open the speaker, long press the Multifunctional button three seconds,there is power on indication and blue light flashes. And then you can start the pairing.
3. Open the bluetooth of the device needs to be paired, choose " BT-Cube " in the searching list and make the pair.The speaker will have reminding sound once pair succeeds.
4. In the pairing condition, if there is call, short press the Multifunctional button to start it. If you want to end it,short press the Multifunctional button. Quick short press the Multifunctional button two times can dial the last call automatically.
5. To close the speaker,long press the Multifunctional button three seconds,there is power off indication and blue light is off.



Music Play in AUXIN

1. Make sure your speaker is fully charged.
2. Open the speaker, Connect the music play device with speaker by AUXIN cable, and start the playing.
3. Press Led mode Button, choose different LED effect by short pressing the Led mode Button.



Troubleshooting

1. Auto pair failed (after the first pair succeed)
Delete" BT-Cube "in your bluetooth device list, close the speaker and restart it, pair again using the formal method.
2. System crashed
Reset the speaker in the charging condition and restart it on problems system crashes or other problems which makes speakers can't work.

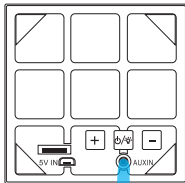
故障排除

1. 不能回连
在你的蓝牙设备列表上删除本机系统设备名，再将本机重新开机使其进入配对模式，重新进行配对连接。
2. 系统死机
在使用本机过程如有发生死机或有不能正常操作现象都可通过充电的方式对本系统进行复位重启。

播放音乐AUXIN模式

1. 确保你的音箱是充满电状态。
2. 在开机状态下将附件的音频连接插入(AUXIN)端口上，再装音频线另一端连接到你的音频播放器上就可以实现播放了，选择LED显示模式。

1. 如要选择不同的LED显示模式通过短按LED选择键就可选择你想要的灯光模式。



When using the product, maintain a distance of 20cm from the body to ensure compliance with RF exposure requirements.

FCC statements:

This device complies with part 15 of the FCC rules. Operation is subject to the following two conditions: (1) this device may not cause harmful interference, and (2) this device must accept any interference received, including interference that may cause undesired operation.

NOTE: The manufacturer is not responsible for any radio or TV interference caused by unauthorized modifications or changes to this equipment. Such modifications or changes could void the user's authority to operate the equipment.

NOTE: This equipment has been tested and found to comply with the limits for a Class B digital device, pursuant to part 15 of the FCC Rules. These limits are designed to provide reasonable protection against harmful interference in a residential installation. This equipment generates uses and can radiate radio frequency energy and, if not installed and used in accordance with the instructions, may cause harmful interference to radio communications. However, there is no guarantee that interference will not occur in a particular installation. If this equipment does cause harmful interference to radio or television reception, which can be determined by turning the equipment off and on, the user is encouraged to try to correct the interference by one or more of the following measures:

- Reorient or relocate the receiving antenna.
- Increase the separation between the equipment and receiver.
- Connect the equipment into an outlet on a circuit different from that to which the receiver is connected.
- Consult the dealer or an experienced radio/TV technician for help.