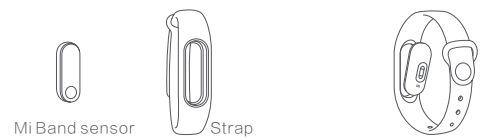




XMSH04HM

User Guide

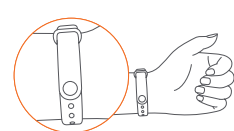
1 Assemble and wear Mi Band



Mi Band sensor

Strap

- Take the sensor and the strap
- Insert the sensor into the strap from above. With the metal contact side entering first



- Pinch the snap to close Mi band around your wrist

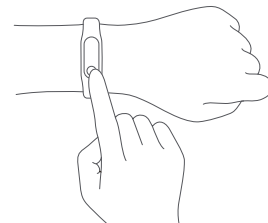
2 Install the Mi Fit app on your phone

Search for "Mi Fit" on the App Store/Google Play or scan the QR code below to download and install the app



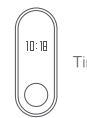
3 Pair Mi Band with your phone

Open the Mi Fit app and follow the instructions to sign in with your Mi Account. Use the app to search for your Mi Band. When the Mi Band vibrates and receives notification on the display, press the button to complete the pairing process.



Use your Mi Band

After pairing, your Mi band will start to track and analyze your movements and sleep patterns. Pressing the button will allow you to check current time, track your steps and monitor heart rate.



Time



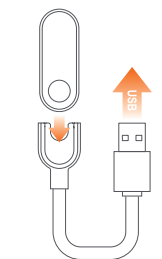
Steps



Heart rate

Charging your Mi Band

Press the button to check the battery status. When battery is low, please charge your Mi Band



Low battery Charging Fully charged

Technical Specs

Product Name: Mi Band 2
 Product Model: XMSH04HM
 Connection Type: Bluetooth 4.2 BLE
 Operating Temperatures: 0°C - 45°C
 Adjustable Length: 155mm - 210mm
 Snap Materials: Aluminum Alloy
 Device Requirements: Compatible with Mi phones and any device with Bluetooth 4.0 and Android 4.4 and above; Compatible with iPhone models 4s and above that run on iOS 7.0 and above.

Battery Capacity: 70mAh
 Battery: Lithium-Polymer
 Weight: 7.0g
 Water Resistance: IP67
 Strap Length: 235mm
 Strap Materials: TPE

Safety Notice

- Do not attempt to force open the sensor. Substances contained in this product and/or its battery may damage the environment and/or human health if handled and disposed of improperly.
- Do not attempt to disassemble your Mi Band.
- Do not expose your Mi Band to extremely high or low temperatures.
- Do not leave your Mi Band in direct sunlight for extended periods of time.
- Do not use your Mi Band in a sauna or steam room.

Built-in Battery Precautions

- Do not attempt to replace your Mi Band's battery or force open the built-in battery.
- Use only the official cable to charge your Mi Band.

Regulatory Notice

This device complies with part 15 of the FCC Rules. Operation is subject to the following two conditions:
 1. This device may not cause harmful interference and;
 2. This device must accept any interference, including interference that may cause undesired operation of the device.
 FCC ID: 2AC8UXMSH04HM



This device is in compliance with the essential requirements and other relevant provisions of Directive 1999/5/EC.

Disposal and Recycling Information

The symbol signifies that this product has to be disposed separately from ordinary household wastes at its end of life. Please kindly be aware that this is your responsibility to dispose electronic equipment at recycling centers so as to help conserve natural resources.

Regulatory Notice

NOTE: This equipment has been tested and found to comply with the limits for a Class B digital device, pursuant to part 15 of the FCC Rules. These limits are designed to provide reasonable protection against harmful interference in a residential installation. This equipment generates, uses and can radiate radio frequency energy and, if not installed and used in accordance with the instructions, may cause harmful interference to radio communications. However, there is no guarantee that interference will not occur in a particular installation. If this equipment does cause harmful interference to radio or television reception, which can be determined by turning the equipment off and on, the user is encouraged to try to correct the interference by one or more of the following measures:
 —Reorient or relocate the receiving antenna.
 —Increase the separation between the equipment and receiver.
 —Connect the equipment into an outlet on a circuit different from that to which the receiver is connected.
 —Consult the dealer or an experienced radio/TV technician for help.

Regulatory Notice

Changes or modifications to this unit not expressly approved by the party responsible for compliance could void the user's authority to operate the equipment.

Warranty

For warranty information, visit: www.mi.com.

Manufacturer: Anhui Huami Information Technology Co., Ltd.
 Address: Rm 1201, Building A4, National Animation Industry Base, 800 Wangjiang West Road, Gaoxin District, Hefei, Anhui, China