

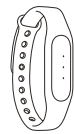
83mm

61mm

Technical Specifications *

Battery Capacity: 45mAh	Battery: Lithium-Polymer
Connection Type: Bluetooth 4.0	Weight: 5.0g
Band Length: 225mm	Adjustable Length: 157mm-205mm
Snap Materials: Aluminum Alloy	Water Resistance: IP67
Band Materials: TPE/TPU	Operating Temperatures: -10°C-50°C
Device Requirements: Smartphone supporting Bluetooth 4.0, with Android 4.4 or above; iPhone 4s/5/5c/5s/6/6 Plus, with iOS 7.0 or above.	

* All specifications are subject to actual performance. Xiaomi reserves the right of final interpretation of terms.



Safety Notice

Do not attempt to force open the tracker. Substances contained in this product and/or its battery may damage the environment and/or human health if handled and disposed of improperly.

Do not attempt to disassemble your Mi Band 1S, it does not contain serviceable components.

Do not expose your Mi Band 1S to extremely high or low temperatures.

Do not leave your Mi Band 1S in direct sunlight for extended periods of time.

Do not use your Mi Band 1S in a sauna or steam room.

Built-in Battery Precautions

Do not attempt to replace your Mi Band 1S' battery. It is built-in and not changeable.

Use only the charger that shipped with your product to charge the battery.

Do not attempt to force open the built-in battery.

Regulatory Notice

This device complies with part 15 of the FCC Rules.

Operation is subject to the following two conditions:

1. This device may not cause harmful interference and;
2. This device must accept any interference, including interference that may cause undesired operation of the device.

FCC ID: 2AC8UXMSH02HM

Any changes or modifications not expressly approved by the party responsible for compliance could void the user's authority to operate the equipment.

CE 1313

This device is in compliance with the essential requirements and other relevant provisions of Directive 1999/5/EC.

Disposal and Recycling Information



The symbol signifies that this product has to be disposed separately from ordinary household wastes at its end of life. Please kindly be aware that this is your responsibility to dispose electronic equipment at recycling centers so as to help conserve natural resources.

Warranty

For warranty information, visit: www.mi.com.

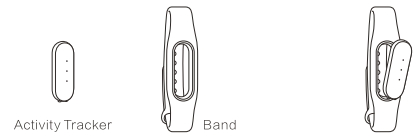
Mi Band 1S User Guide

Model: XMSH02HM



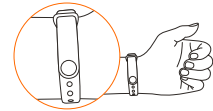
Mi Band 1S User Guide

1 Assemble and wear Mi Band 1S



1 Take the activity tracker and the band

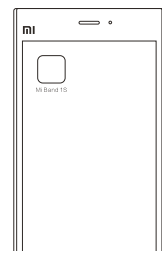
2 Insert the activity tracker into the band



3 Pinch the snap to close the band around your wrist

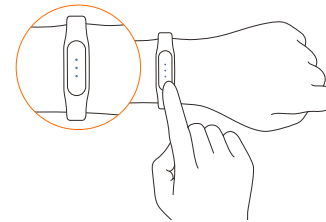
2 Install the Mi Band 1S app on your phone

Search for "Mi Band 1S" on the App Store/Google Play or scan the QR code below to download and install the app.



3 Pair Mi Band 1S with your phone

Open the Mi Band 1S app and follow the instructions to sign in with your Mi Account. Use the app to search for your Mi Band 1S. When the band's lights blink blue, tap the activity tracker a few times to complete the pairing process.



Using your Mi Band 1S

After pairing, your Mi Band 1S starts to track and analyze your movements and sleep patterns. The band's lights allow you to check how much you have exercised. Just raise your wrist like you would read a watch.



Less than 1/3 of goal achieved



Over 1/3 of goal achieved



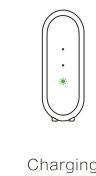
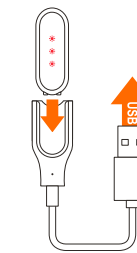
Over 2/3 of goal achieved



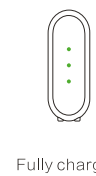
Goal achieved

Charging your Mi Band 1S

The band's lights blink red when the battery is low.



Charging



Fully charged