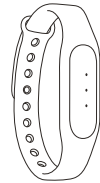


Technical Specifications*

Connection type: Bluetooth 4.0
 Battery Capacity: 41mAh
 Water resistance: IP67
 Adjustable length: 157mm ~ 205mm
 Strap materials: Aluminum alloy
 Device requirements: Android 4.4 or above and Xiaomi phone supporting Bluetooth 4.0

Battery: Lithium-Polymer
 Temperature: -10°C ~ 50°C
 Strap Length: 225mm
 Device Weight: 5.0g
 Strap Materials: Silicon TPV
 Device Weight: 5.0g

* All specifications are subject to actual performance. Xiaomi reserves the right of final interpretation of terms.



Harmful Substances in Electronic Products

Name of part	Harmful substance or element				
	Lead (Pb)	Mercury (Hg)	Cadmium (Cd)	Hexavalent Chromium (Cr(VI))	Polybrominated Biphenyls (PBB)
Tracker	X	O	O	O	O
Battery	O	O	O	O	O
Strap	O	O	O	O	O
Snap	O	O	O	O	O
Charger cable	X	O	O	O	O

O: Signifies the content of harmful substances in all homogenous materials is below the maximum limit as stated in the Standard of the Electronics Industry of the People's Republic of China (SJ/T 11363 - 2006).

X: Signifies the content of harmful substances in at least one component of one of the homogenous materials exceeds the maximum limit stated in the Standard of the Electronics Industry of the People's Republic of China (SJ/T 11363 - 2006).

The copper alloy contacts of the tracker and the charger cable contain a small amount of lead. This product conforms to the environmental requirements of the RoHS Directive of the European Commission. Currently there is no technology which can replace or reduce the lead content of copper and copper alloys.

Xiaomi Warranty Voucher

Mi Band Aftersales Service Promise: The following aftersales warranty services are in accordance with the Law of the People's Republic of China on Protection of Consumer Rights and the Law of the People's Republic of China on Product Quality. The warranty policies are stated below:

You are entitled to repair, replace or return your product according to the warranty policy during the warranty period. You may be required to furnish a receipt of purchase in order to have repairs, replacements or returns.

1. If any of the performance failures listed in the Table of Mi Band Product Performance Failures occurs to your Mi Band within 7 days of purchase, and the failure is confirmed by a Xiaomi Aftersales Service Center, you may choose to repair, replace, or return your product at no charge.

2. If any of the performance failures listed in the Table of Mi Band Product Performance Failures occurs to your Mi Band from a period of 8 to 15 days of purchase, and the failure is confirmed by a Xiaomi Aftersales Service Center, you may choose to repair or return your product at no charge.

3. If any of the performance failures listed in the Table of Mi Band Product Performance Failures occurs to your Mi Band within 12 months of purchase, and the failure is confirmed by a Xiaomi Aftersales Service Center, you may choose to repair your product at no charge.

Table of Mi Band Product Performance Failures

Name	Performance Failure
Tracker	Any function failure listed in the manual Notification light fault Vibration fault Unable to synchronize with a specific device Cracks in the body due to structural or material failures
Charger cable	Unable to charge the wristband

To inquire about the Xiaomi authorized services information, please visit Xiaomi's Aftersales Services Website:

www.mi.com/service

Or call the Xiaomi Service Hotline: 400-100-5678

This equipment can be used in member states of the European Union once the corresponding administrative license is obtained. Anhui Huami Information Technology Co., Ltd., as manufacturer of the product XMSH01HM, declares that the said product complies with the essential requirements established in article 3 of the Council of Europe Directive 1999/5/CE, dated 9th March, 1999.

This device complies with part 15 of the FCC Rules. Operation is subject to the following two conditions: (1) This device may not cause harmful interference, and (2) this device must accept any interference received, including interference that may cause undesired operation.

Changes or modifications not expressly approved by the party responsible for compliance could void the user's authority to operate the equipment.

Xiaomi MI Band User Manual

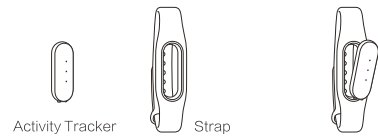
Model: XMSH01HM
Xiaomi Technology Co., Ltd.

<http://www.mi.com> (the official website of Xiaomi Technology Co., Ltd.), Xiaomi, 小米, the Mi Band and other trademarks and copyrights are owned by Xiaomi Technology Co., Ltd. and its affiliates, and are protected by the law of the People's Republic of China.



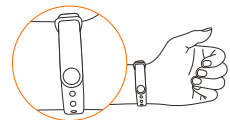
User Manual

1 Assembly and use of wristband



Activity Tracker Strap

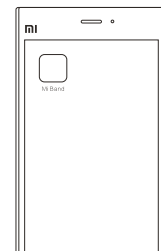
- Take the activity tracker and the strap.
- Place the activity tracker into the strap.



- Close the snap to fit the wristband on your wrist.

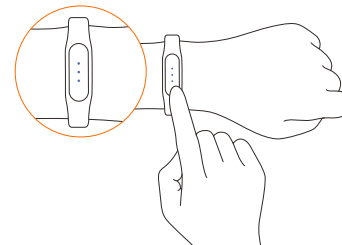
2 Download the Mi Band App on your phone

Search for "Mi Band" in the Xiaomi App Store or scan the QR code below and install the Mi Band App



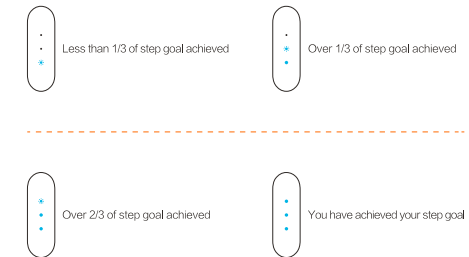
3 Bind the Mi Band and your phone

Open the Mi Band App and follow the instructions to log in with your Xiaomi Account. Search for your Mi Band. When the blue light blinks, tap on the activity tracker a few times to complete the binding process.



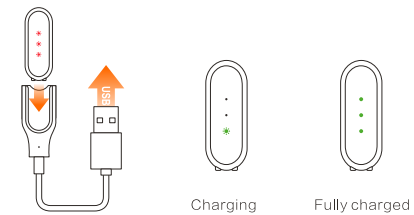
Using your Mi Band

After binding the wristband, you can immediately start to track and analyze your movements and your sleep patterns. You can check your wristband at any time to see how much you have exercised by looking at the notification lights.



Charging your Mi Band

The three notification lights blink when the battery is low; please charge your wristband as soon as possible.



Customer service 400-100-5678 Website www.mi.com