

## Antenna specifications

### Electrical Characteristics Description

|                               |  |                                 |  |
|-------------------------------|--|---------------------------------|--|
| <b>Model:</b>                 | Swift antenna  |                                 |  |
| <b>Transmitter Frequency:</b> | 2400MHz-2483.5MHz                                      |                                 |  |
| <b>Receiver Frequency:</b>    | 1170 MHz -1180 MHz、 1570MHz-1580MHz、 2400MHz-2483.5MHz |                                 |  |
| <b>Antenna information:</b>   | <b>Antenna Name</b>                                    | <b>Model(s)/Type(s)</b>         |  |
|                               | RF Antenna Assembly                                    | Model/Part Number:              | Swift  |
|                               |  | Manufacturer:                   | Anhui Huami Information Technology Co., Ltd.               |
|                               |  | Frequency Range:                | 1170 MHz -1180 MHz<br>1570MHz-1580MHz<br>2400MHz-2483.5MHz |
|                               |  | Connector Type/<br>Maximum Gain | -3.61dBi   |
|                               |  | Antenna Type/ Pattern:          | Metal Case   |
|                               |  | Antenna Size                    | NA   |
|                               |  | Measurement:                    | NA   |

## Dimensions

Dimensions Fig:

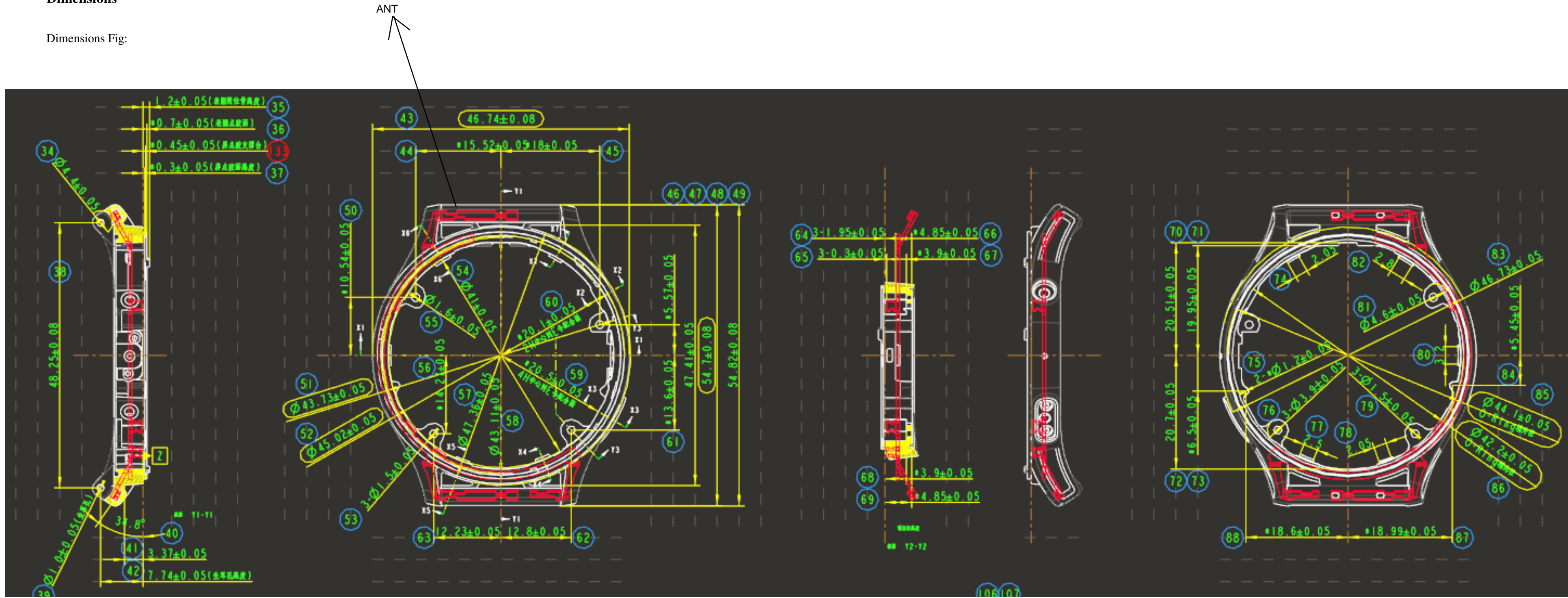
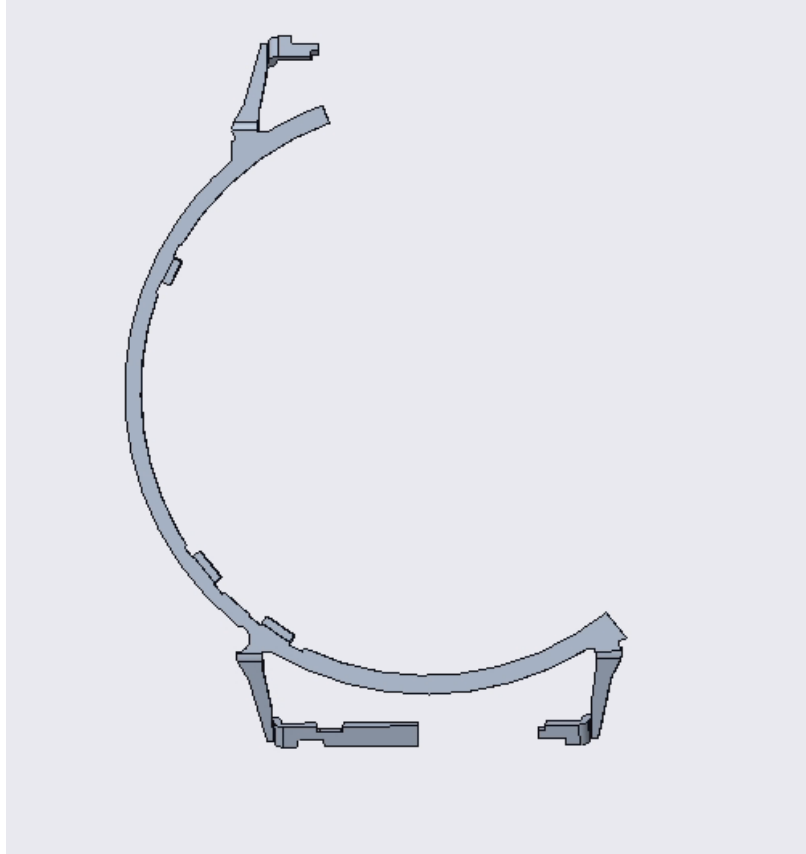


Fig. 1 Antenna Dimensions

## Electrical Performance

S11 parameter-GPS L1 test result as Fig.2.



Antenna diagram

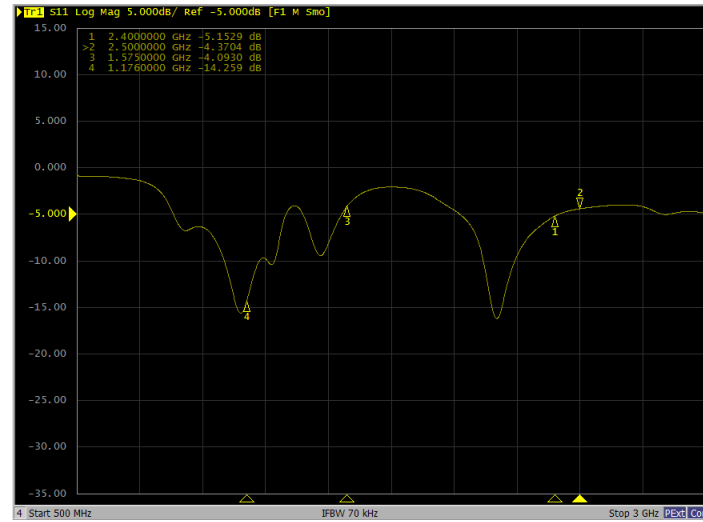


Fig. 2 S11 Parameter-GPS L1/L5 and BT test result

Table 1 shows the emission efficiency and the maximum gain of the antenna at different frequencies changes. The antenna radiation pattern diagram show in Fig.4.

| Fre.(MHz) | Eff_dB | Eff_% | Gain   |
|-----------|--------|-------|--------|
| 1155      | -14.16 | 3.84  | -10.97 |
| 1165      | -13.82 | 4.15  | -10.56 |
| 1175      | -13.61 | 4.36  | -10.26 |
| 1185      | -13.38 | 4.59  | -9.85  |
| 1195      | -13.23 | 4.75  | -9.83  |
| 1205      | -13.07 | 4.93  | -9.84  |
| L5        |        |       |        |
| 1535      | -11.49 | 7.1   | -6.17  |
| 1545      | -11.86 | 6.52  | -6.59  |
| 1555      | -12.25 | 5.96  | -7.28  |
| 1565      | -12.69 | 5.39  | -7.76  |
| 1575      | -13.16 | 4.84  | -8.51  |
| 1585      | -13.65 | 4.32  | -9.26  |
| 1595      | -14.01 | 3.97  | -9.7   |
| 1605      | -14.23 | 3.78  | -10.17 |
| 1615      | -14.71 | 3.38  | -10.92 |
| L1        |        |       |        |
| 2400      | -8.97  | 12.69 | -3.61  |
| 2410      | -9.07  | 12.38 | -3.72  |
| 2420      | -9.16  | 12.12 | -3.78  |
| 2430      | -9.24  | 11.9  | -3.82  |
| 2440      | -9.35  | 11.62 | -3.88  |
| 2450      | -9.54  | 11.12 | -4.02  |
| 2460      | -9.57  | 11.04 | -4.12  |
| 2470      | -9.57  | 11.05 | -4.1   |
| 2480      | -9.55  | 11.1  | -4.15  |
| 2490      | -9.59  | 11    | -4.22  |
| 2500      | -9.78  | 10.52 | -4.47  |
| BT        |        |       |        |

Table 1Max. Gain and Efficiency Vs. Frequency

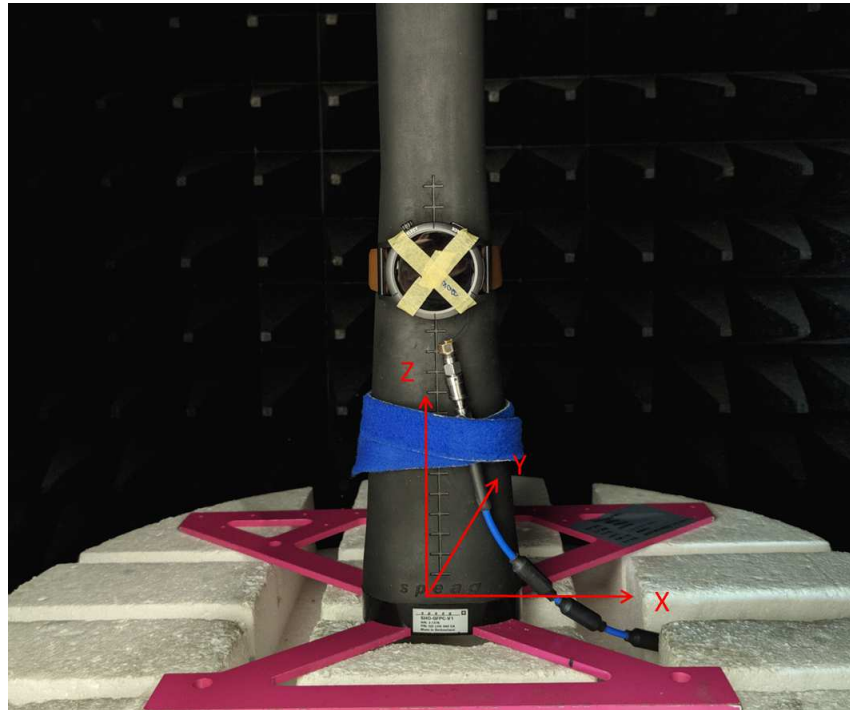
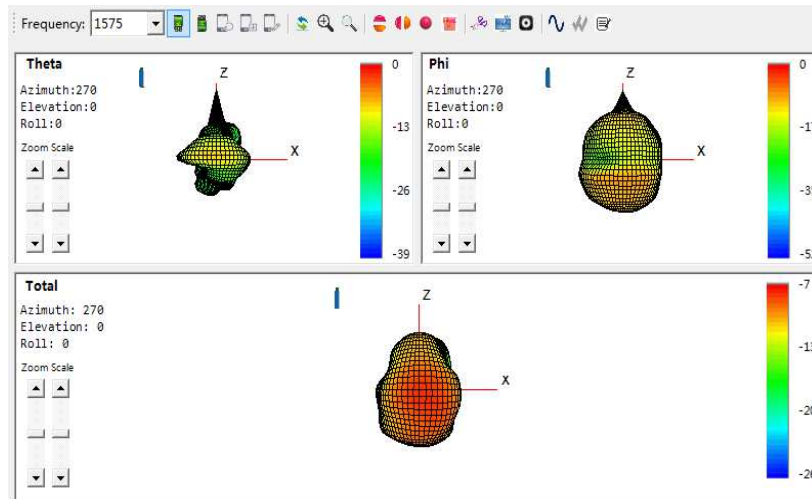
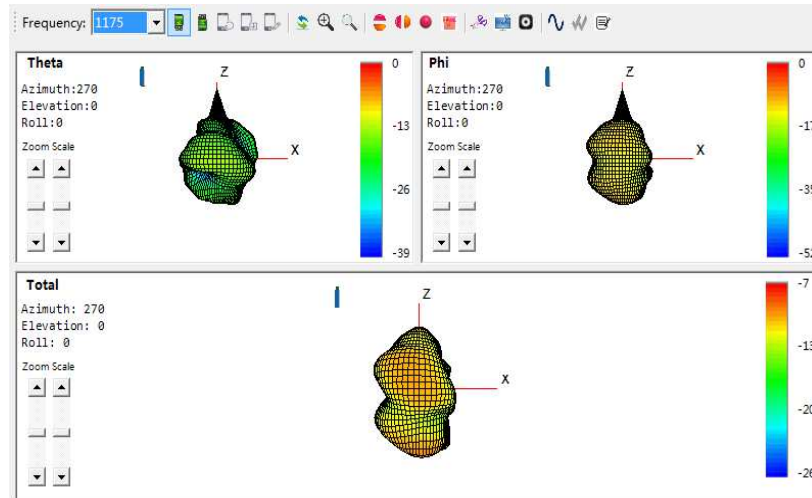


Fig. 3 Operating diagram



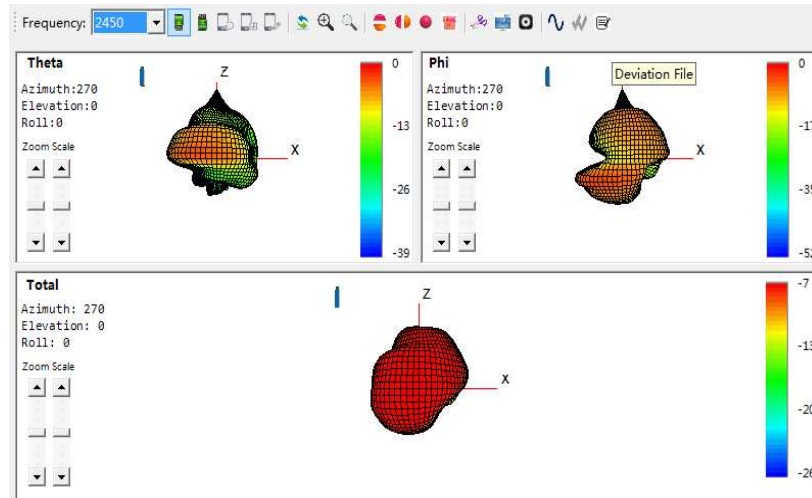


Fig. 4 antenna radiation pattern diagram