

# External Photos

## for KSCR2209001800AT

Test Model No.: A2174



Unless otherwise agreed in writing, this document is issued by the Company subject to its General Conditions of Service printed overleaf, available on request or accessible at <http://www.sgs.com/en/Terms-and-Conditions.aspx> and, for electronic format documents, subject to Terms and Conditions for Electronic Documents at <http://www.sgs.com/en/Terms-and-Conditions/Terms-e-Documents.aspx>. Attention is drawn to the limitation of liability, indemnification and jurisdiction issues defined therein. Any holder of this document is advised that information contained hereon reflects the Company's findings at the time of its intervention only and within the limits of Client's instructions, if any. The Company's sole responsibility is to its Client and this document does not exonerate parties to a transaction from exercising all their rights and obligations under the transaction documents. This document cannot be reproduced except in full, without prior written approval of the Company. Any unauthorized alteration, forgery or falsification of the content or appearance of this document is unlawful and offenders may be prosecuted to the fullest extent of the law. Unless otherwise stated the results shown in this test report refer only to the sample(s) tested and such sample(s) are retained for 30 days only.

Attention: To check the authenticity of testing /inspection report & certificate, please contact us at telephone: (86-755) 8307 1443, or email: [CN.Doccheck@sgs.com](mailto:CN.Doccheck@sgs.com)

No.10, Weiye Road, Innovation Park, Kunshan, Jiangsu, China 215300	t(86-512)57355888	f(86-512)57370818	<a href="http://www.sgsgroup.com.cn">www.sgsgroup.com.cn</a>
中国·江苏·昆山市留学生创业园伟业路10号 邮编 215300	t(86-512)57355888	f(86-512)57370818	<a href="mailto:sgs.china@sgs.com">sgs.china@sgs.com</a>

### EUT Constructional Details (EUT Photos)



Unless otherwise agreed in writing, this document is issued by the Company subject to its General Conditions of Service printed overleaf, available on request or accessible at <http://www.sgs.com/en/Terms-and-Conditions.aspx> and, for electronic format documents, subject to Terms and Conditions for Electronic Documents at <http://www.sgs.com/en/Terms-and-Conditions/Terms-e-Document.aspx>. Attention is drawn to the limitation of liability, indemnification and jurisdiction issues defined therein. Any holder of this document is advised that information contained hereon reflects the Company's findings at the time of its intervention only and within the limits of Client's instructions, if any. The Company's sole responsibility is to its Client and this document does not exonerate parties to a transaction from exercising all their rights and obligations under the transaction documents. This document cannot be reproduced except in full, without prior written approval of the Company. Any unauthorized alteration, forgery or falsification of the content or appearance of this document is unlawful and offenders may be prosecuted to the fullest extent of the law. Unless otherwise stated the results shown in this test report refer only to the sample(s) tested and such sample(s) are retained for 30 days only.

Attention: To check the authenticity of testing /inspection report & certificate, please contact us at telephone: (86-755) 8307 1443, or email: [CN\\_Doccheck@sgs.com](mailto:CN_Doccheck@sgs.com)

No.10, Weiye Road, Innovation Park, Kunshan, Jiangsu, China 215300      ☎(86-512)57355888      ☎(86-512)57370818      [www.sgsgroup.com.cn](http://www.sgsgroup.com.cn)  
 中国·江苏·昆山市留学生创业园伟业路10号 邮编 215300      ☎(86-512)57355888      ☎(86-512)57370818      [sgs.china@sgs.com](mailto:sgs.china@sgs.com)



Unless otherwise agreed in writing, this document is issued by the Company subject to its General Conditions of Service printed overleaf, available on request or accessible at <http://www.sgs.com/en/Terms-and-Conditions.aspx> and, for electronic format documents, subject to Terms and Conditions for Electronic Documents at <http://www.sgs.com/en/Terms-and-Conditions/Terms-e-Document.aspx>. Attention is drawn to the limitation of liability, indemnification and jurisdiction issues defined therein. Any holder of this document is advised that information contained hereon reflects the Company's findings at the time of its intervention only and within the limits of Client's instructions, if any. The Company's sole responsibility is to its Client and this document does not exonerate parties to a transaction from exercising all their rights and obligations under the transaction documents. This document cannot be reproduced except in full, without prior written approval of the Company. Any unauthorized alteration, forgery or falsification of the content or appearance of this document is unlawful and offenders may be prosecuted to the fullest extent of the law. Unless otherwise stated the results shown in this test report refer only to the sample(s) tested and such sample(s) are retained for 30 days only.

Attention: To check the authenticity of testing /inspection report & certificate, please contact us at telephone: (86-755) 8307 1443, or email: [CN.Doccheck@sgs.com](mailto:CN.Doccheck@sgs.com)  
 No.10, Weiye Road, Innovation Park, Kunshan, Jiangsu, China 215300  
 中国·江苏·昆山市留学生创业园伟业路10号 邮编 215300

☎(86-512)57355888 ☎(86-512)57370818 [www.sgsgroup.com.cn](http://www.sgsgroup.com.cn)  
 ☎(86-512)57355888 ☎(86-512)57370818 [sgs.china@sgs.com](mailto:sgs.china@sgs.com)

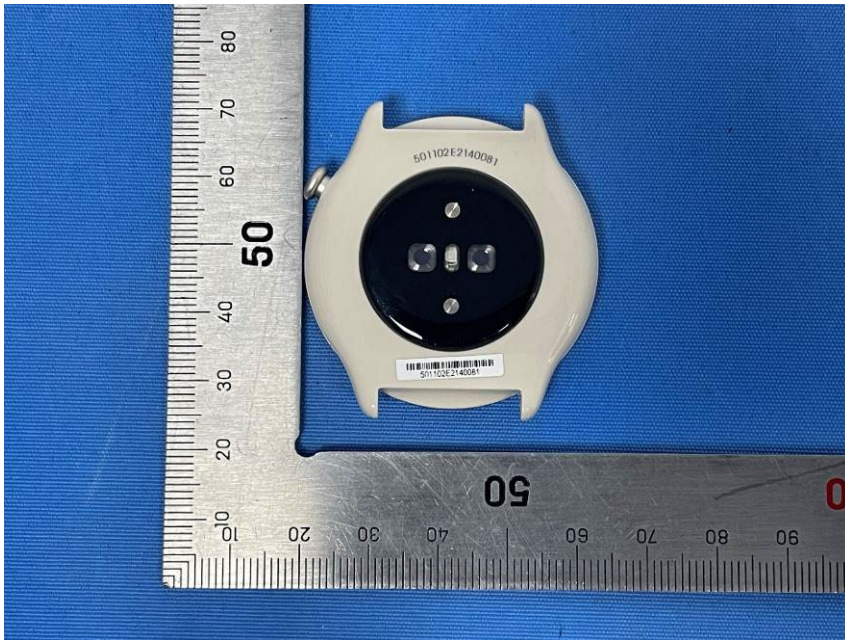


Unless otherwise agreed in writing, this document is issued by the Company subject to its General Conditions of Service printed overleaf, available on request or accessible at <http://www.sgs.com/en/Terms-and-Conditions.aspx> and, for electronic format documents, subject to Terms and Conditions for Electronic Documents at <http://www.sgs.com/en/Terms-and-Conditions/Terms-e-Document.aspx>. Attention is drawn to the limitation of liability, indemnification and jurisdiction issues defined therein. Any holder of this document is advised that information contained hereon reflects the Company's findings at the time of its intervention only and within the limits of Client's instructions, if any. The Company's sole responsibility is to its Client and this document does not exonerate parties to a transaction from exercising all their rights and obligations under the transaction documents. This document cannot be reproduced except in full, without prior written approval of the Company. Any unauthorized alteration, forgery or falsification of the content or appearance of this document is unlawful and offenders may be prosecuted to the fullest extent of the law. Unless otherwise stated the results shown in this test report refer only to the sample(s) tested and such sample(s) are retained for 30 days only.

Attention: To check the authenticity of testing /inspection report & certificate, please contact us at telephone: (86-755) 8307 1443, or email: [CN\\_Doccheck@sgs.com](mailto:CN_Doccheck@sgs.com)

No.10, Weiye Road, Innovation Park, Kunshan, Jiangsu, China 215300  
 中国·江苏·昆山市留学生创业园伟业路10号 邮编 215300

☎(86-512)57355888 ☎(86-512)57370818 [www.sgsgroup.com.cn](http://www.sgsgroup.com.cn)  
 ☎(86-512)57355888 ☎(86-512)57370818 [sgs.china@sgs.com](mailto:sgs.china@sgs.com)



Unless otherwise agreed in writing, this document is issued by the Company subject to its General Conditions of Service printed overleaf, available on request or accessible at <http://www.sgs.com/en/Terms-and-Conditions.aspx> and, for electronic format documents, subject to Terms and Conditions for Electronic Documents at <http://www.sgs.com/en/Terms-and-Conditions/Terms-e-Documents.aspx>. Attention is drawn to the limitation of liability, indemnification and jurisdiction issues defined therein. Any holder of this document is advised that information contained hereon reflects the Company's findings at the time of its intervention only and within the limits of Client's instructions, if any. The Company's sole responsibility is to its Client and this document does not exonerate parties to a transaction from exercising all their rights and obligations under the transaction documents. This document cannot be reproduced except in full, without prior written approval of the Company. Any unauthorized alteration, forgery or falsification of the content or appearance of this document is unlawful and offenders may be prosecuted to the fullest extent of the law. Unless otherwise stated the results shown in this test report refer only to the sample(s) tested and such sample(s) are retained for 30 days only.

Attention: To check the authenticity of testing /inspection report & certificate, please contact us at telephone: (86-755) 8307 1443, or email: [CN\\_Doccheck@sgs.com](mailto:CN_Doccheck@sgs.com)

No.10, Weiye Road, Innovation Park, Kunshan, Jiangsu, China 215300  
 中国·江苏·昆山市留学生创业园伟业路10号 邮编 215300

☎(86-512)57355888 ☎(86-512)57370818 [www.sgs.com.cn](http://www.sgs.com.cn)  
 ☎(86-512)57355888 ☎(86-512)57370818 [sgs.china@sgs.com](mailto:sgs.china@sgs.com)

# Packaging

49.5 mm

108 mm

49.5 mm

105.5 mm

UP YOUR GAME



amazfit  
A Zepp Brand

SLIM & CLASSIC  
DESIGN WITH STAINLESS STEEL

Powered by  
ZEPP OS

GTR 4 Mini

UP YOUR GAME

- Slim & Classic Design with Stainless Steel
- 24H Heart Rate, SpO2, Stress Monitoring
- Dual-band & 6 Satellite Positioning Systems
- Ultra-long Battery Life

Amazfit GTR 4 Mini

UP YOUR GAME

Model Name: A2174  
Input: 5 V DC 500 mA MAX  
Bluetooth Version: V5.1  
Compatible with: Android 7.0, iOS 12.0 or above  
Package Contents: Smart watch with strap, Charging base, Instruction manual

Manufactured by: Anhui Huami Information Technology Co., Ltd.  
Address: 7/F, Building E2, Huami Global Innovation Center, No. 900, Wangjiang West Road, High-tech Zone, Hefei City, China (Anhui Pilot Free Trade Zone)  
This device complies with part 15 of the FCC Rules. Operation is subject to the following two conditions: (1) This device may not cause harmful interference, and (2) this device must accept any interference received, including interference that may cause undesired operation.  
FCC ID: 2AC8UA2174 IC: 21806-A2174

© 2021 Zepp Health. All rights reserved. Amazfit and the Amazfit logo are trademarks or registered trademarks of Zepp Health Group. Zepp Health Group includes Zepp Health Corporation and its affiliates.

Bluetooth-Version: V5.1  
Kompatibel mit: Android 7.0, iOS 12.0 oder höher  
Lieferumfang: Smartwatch mit Band, Ladestation, Benutzerhandbuch  
Versión de Bluetooth: V5.1  
Compatible con: Android 7.0, iOS 12.0 o superior  
Contenido del paquete: Reloj inteligente con correa, base de carga y manual de instrucciones

Versione Bluetooth: V5.1  
Compatibile con: Android 7.0, iOS 12.0 o versioni successive  
Contenuto della confezione: smart watch con cinturino, base di ricarica, manuale di istruzioni

Entrée : 5 V c.c. 500 mA MAX  
Version Bluetooth : V5.1  
Compatible avec : Android 7.0, iOS 12.0 ou versions ultérieures  
Contenu de l'emballage : Montre intelligente avec bracelet, station de chargement, manuel d'utilisation

Fabriqué par : Anhui Huami Information Technology Co., Ltd.  
Address : 7/F, Building E2, Huami Global Innovation Center, No. 900, Wangjiang West Road, High-tech Zone, Hefei City, China (Anhui Pilot Free Trade Zone)  
Cet appareil est conforme à la partie 15 des règles FCC. Son fonctionnement est soumis aux deux conditions suivantes : (1) Cet appareil ne doit pas provoquer d'interférences nuisibles (2) Cet appareil doit accepter toutes les interférences reçues, y compris les interférences susceptibles de provoquer un fonctionnement indésirable.  
FCC ID: 2AC8UA2174 IC: 21806-A2174

© 2021 Zepp Health. Tous les droits sont réservés. Amazfit et le logo Amazfit sont des marques commerciales ou des marques déposées de Zepp Health Group. Le groupe Zepp Health comprend la société Zepp Health et ses filiales.

Versão de Bluetooth: V5.1  
Compatível com: Android 7.0, iOS 12.0 ou superior  
Conteúdo da embalagem: Smartwatch com a pulseira, base de carregamento, manual de instruções



ZEPP

A GLOBAL SMART WEARABLE & HEALTH TECHNOLOGY LEADER

Trusted by a community of over 40 million active users from 90+ countries, Zepp is a comprehensive health management platform that provides 24/7 actionable insights and guidance, to help you attain your fitness and wellness goals.

112 mm

107.1 mm

49.2 mm

廢電池請回收 回 018-XXXXX R-R-hM6-A2174  
 This product isn't a medical device. None of the data or measurements are intended for medical diagnosis or medical monitoring. The figures are for references only, and the actual product may differ.  
 © 2021 Zepp Health. All rights reserved. Amazfit and the Amazfit logo are trademarks or registered trademarks of Zepp Health Group. Zepp Health Group includes Zepp Health Corporation and its affiliates.

PAP 21	POF 7
Carta	Plastica
Raccolta separata	