

Internal Photos

Refer also to External Photos for references

Photo 1. EUT – Internal view, Fountain Base 1, detached from display, view 1
Enclosure opened

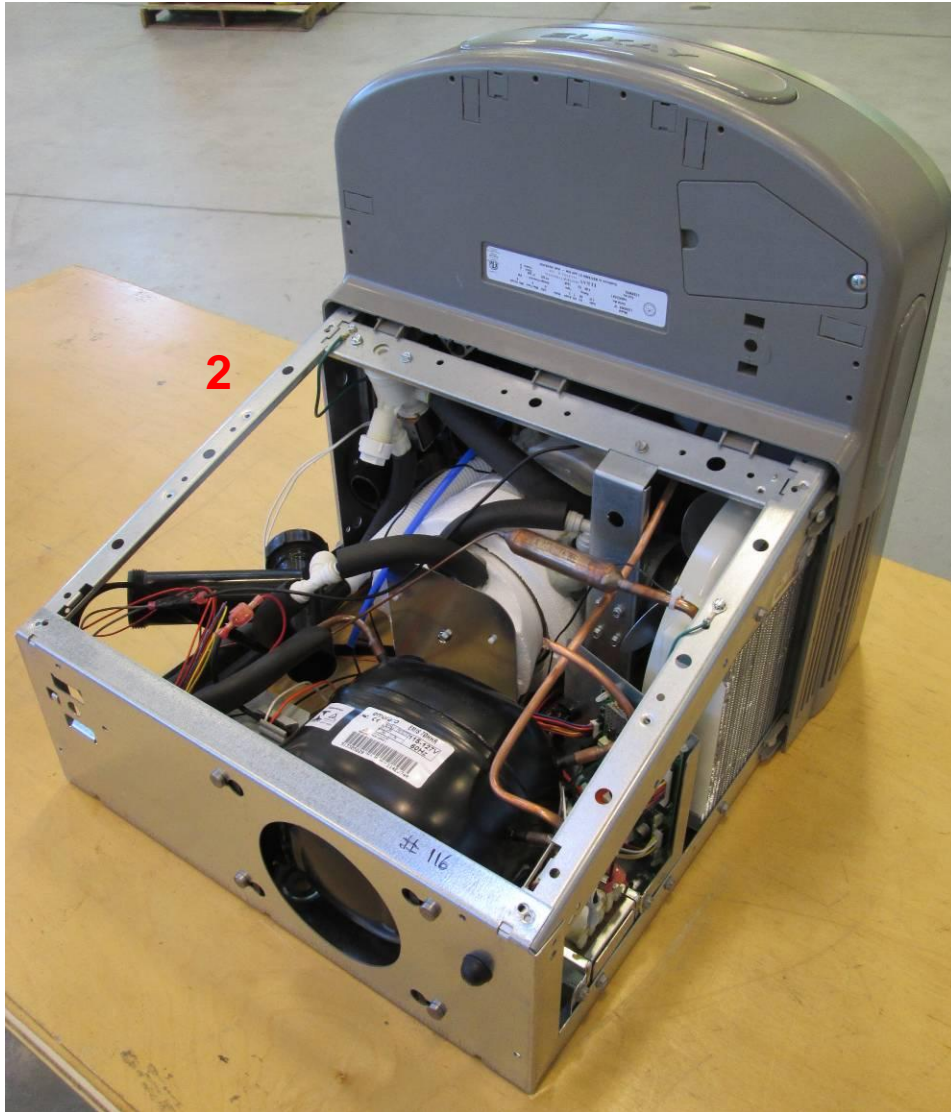
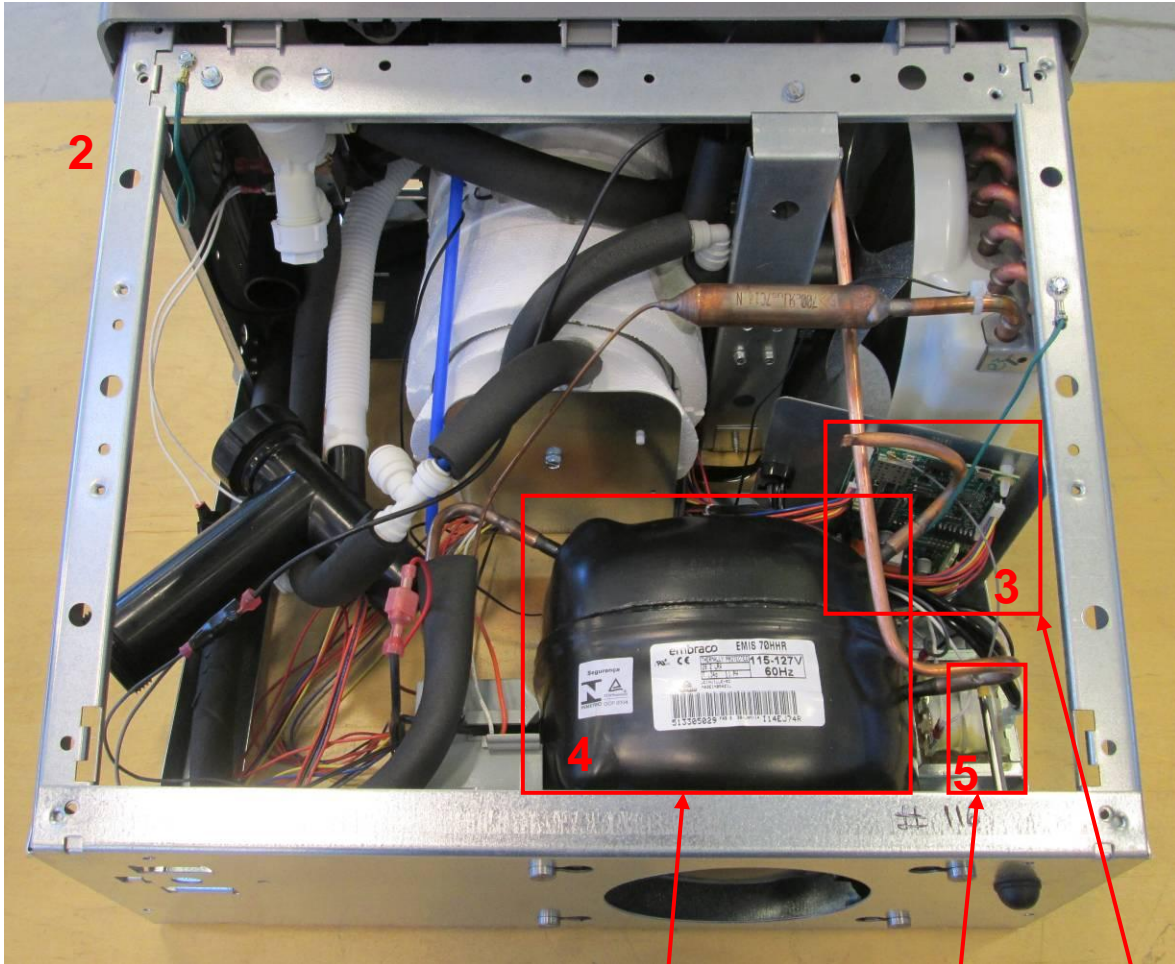


Photo 2. EUT – Internal view, Fountain Base 1, detached from display, view 2
Enclosure opened, close-up of front

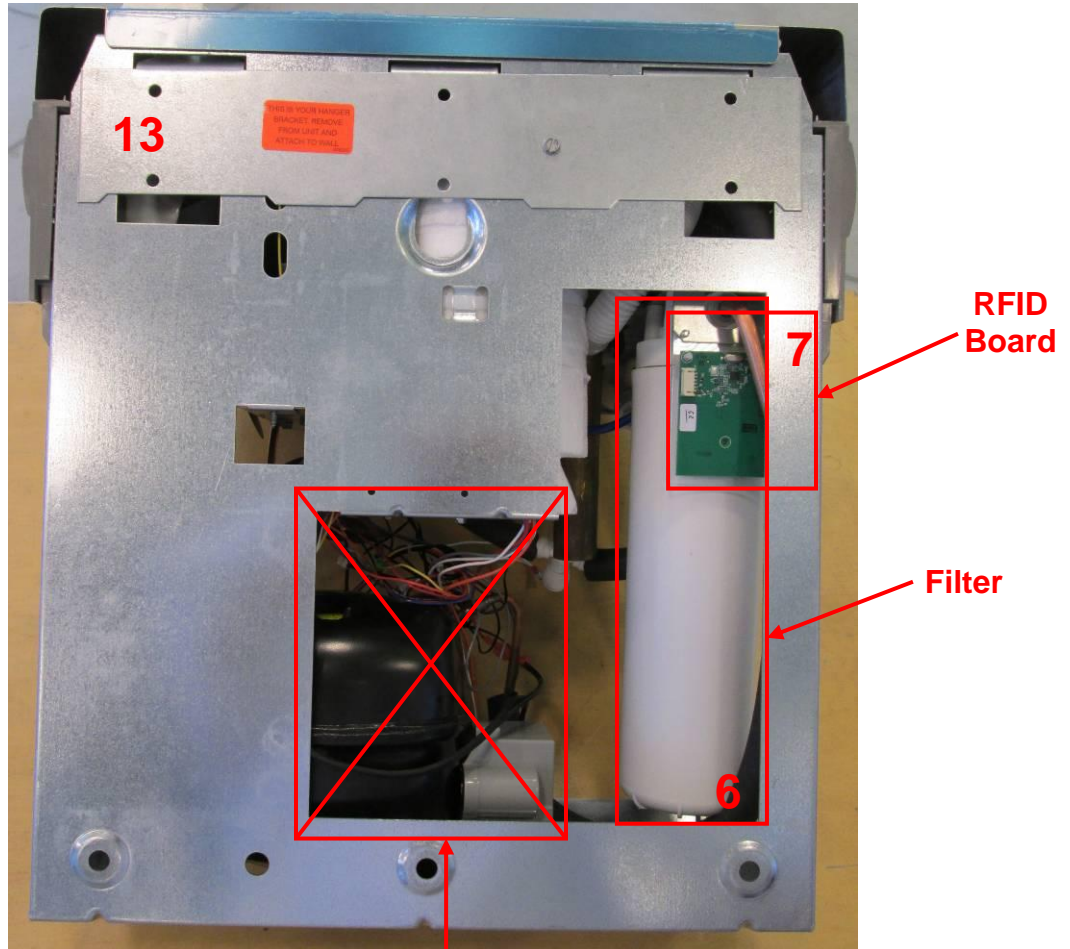


Refrigeration Unit

900 MHz Antenna
(Connects to Control Board)

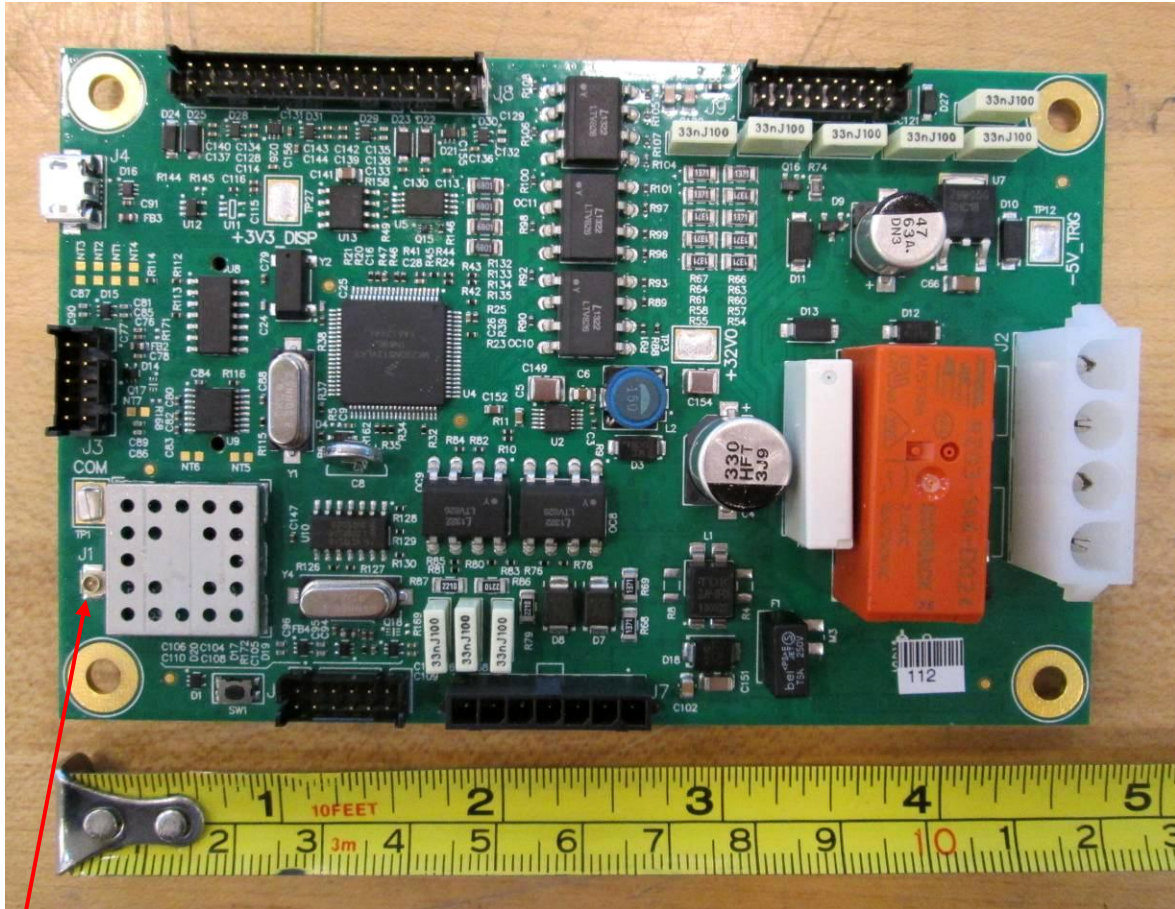
Control Board

Photo 3. EUT – Internal view, Fountain Base 2 showing location of RFID board. Refrigeration unit and cables shown will not be present for final product, and these parts are not powered during testing. Only RFID board is electrically connected to Fountain Base 1.



Refrigeration unit and other electrical parts other than the RFID board are disconnected and unpowered for the testing of Fountain Base 2.

Photo 4. EUT – Internal view, Part # 3
Control Board, View 1



900 MHz
antenna
connector

Photo 5. EUT – Internal view, Part # 3
Control Board, View 2, shield removed

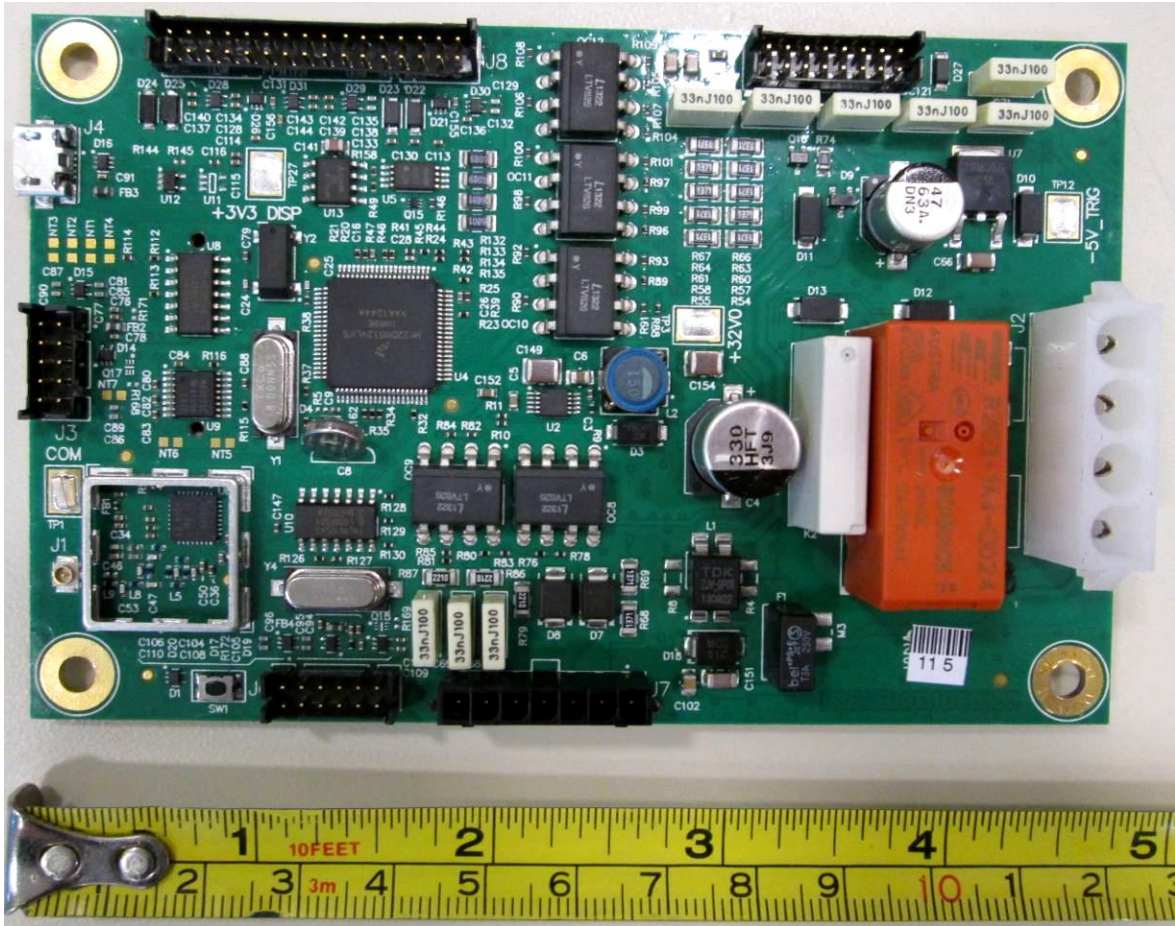


Photo 6. EUT – Internal view, Part # 3
Control Board, View 3



Photo 7. EUT – Internal view, Part # 7
RFID Board, View 1

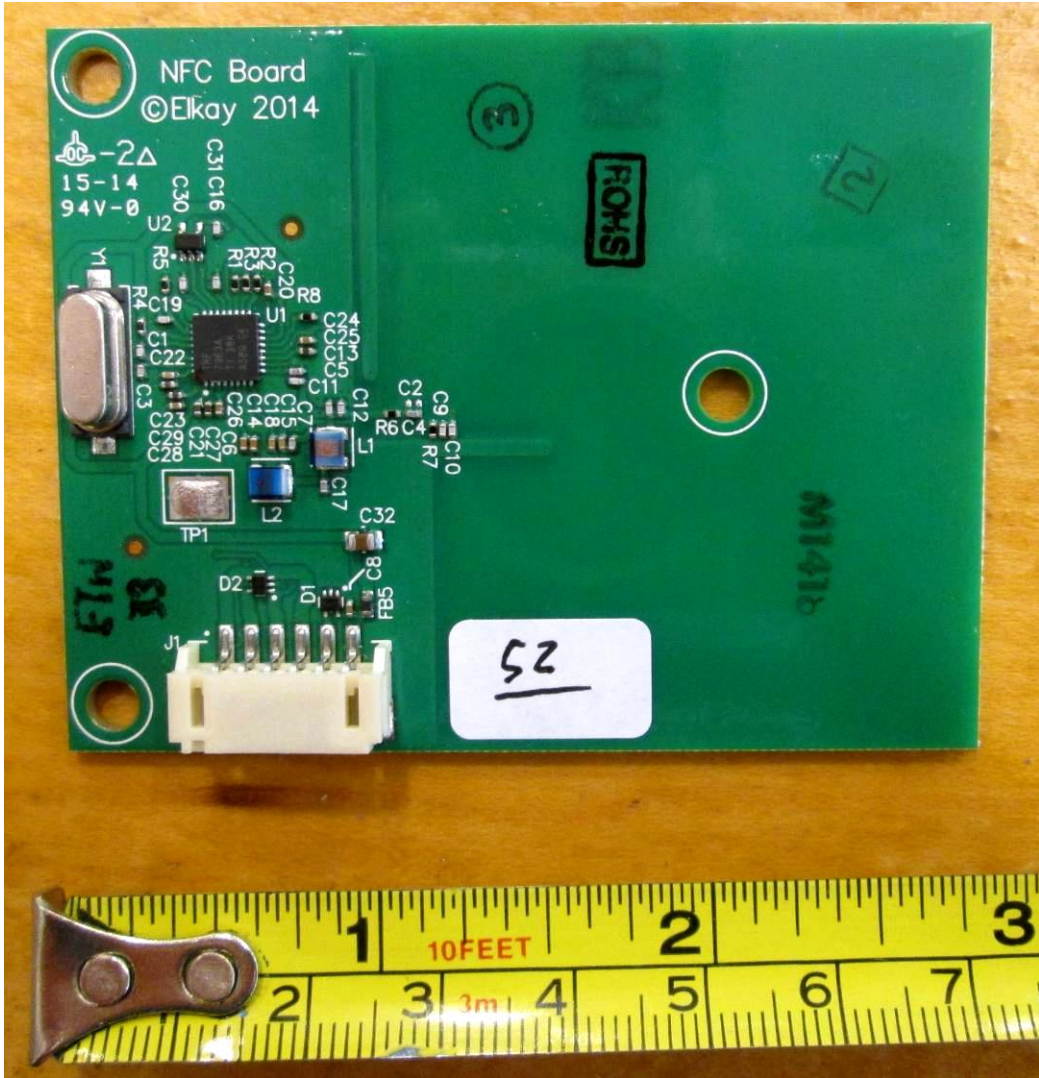


Photo 8. EUT – Internal view, Part # 7
RFID Board, View 2

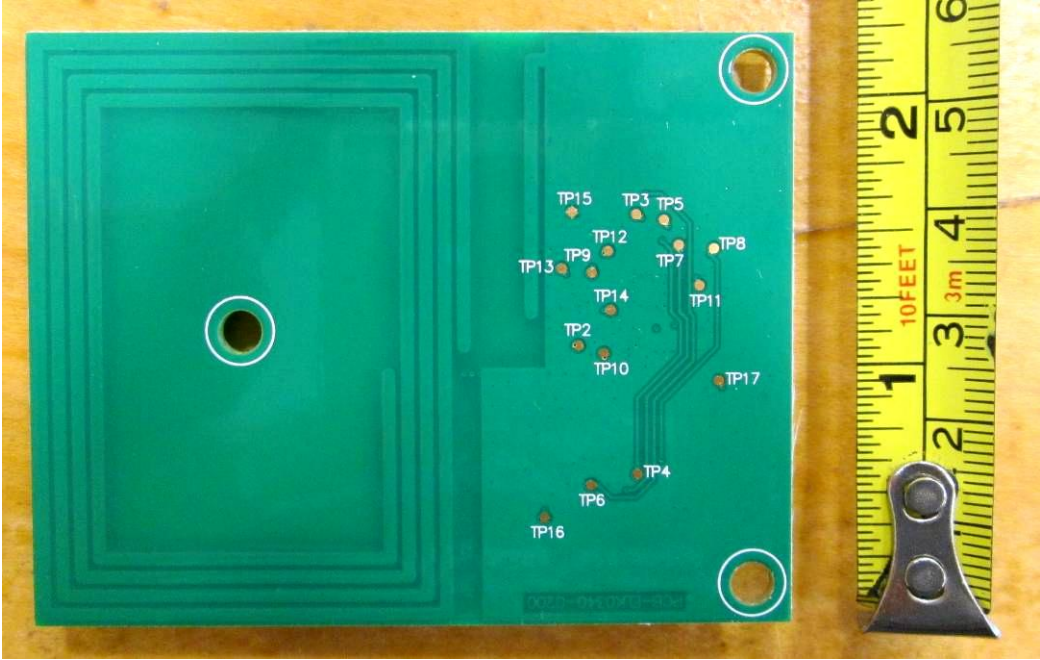
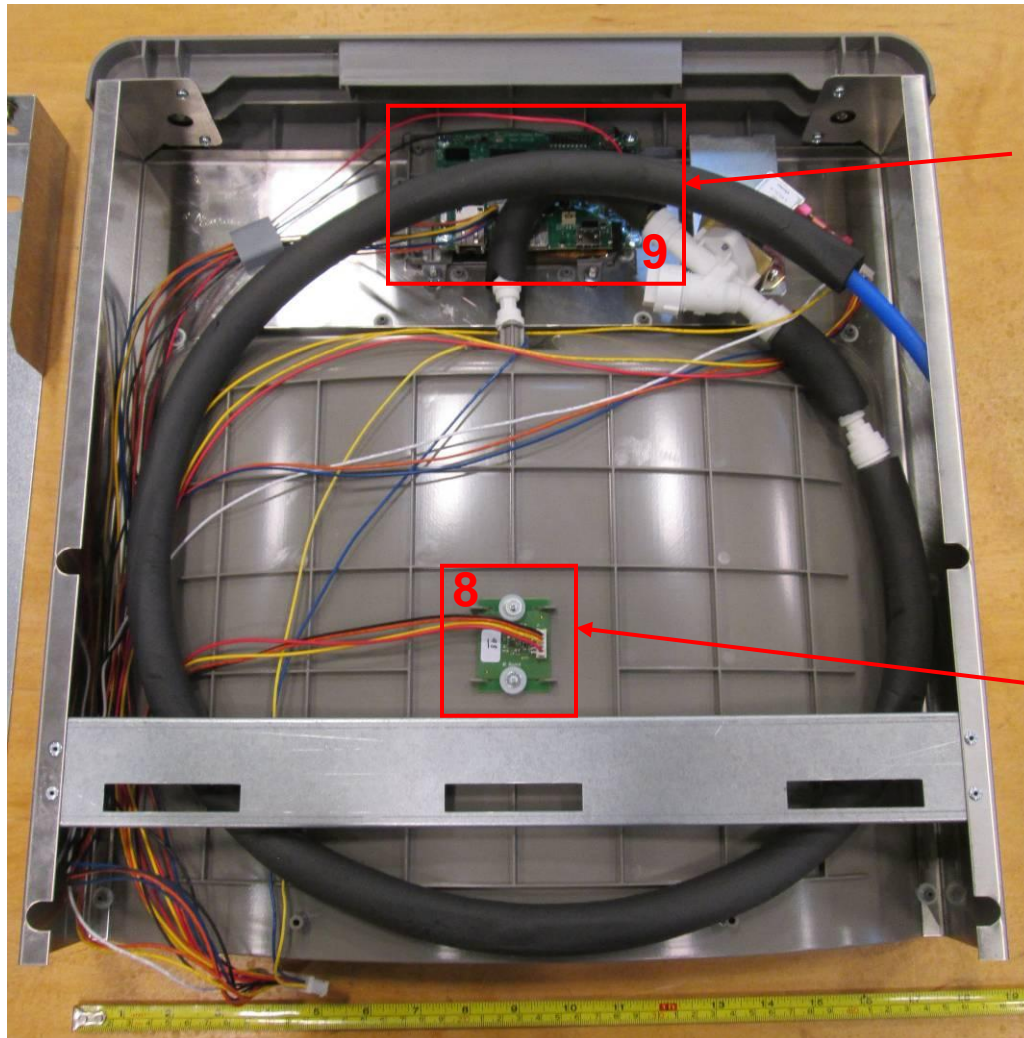


Photo 9. EUT – Internal view, Part # 1
Graphics Display & Bottle Filler, back panel opened, view 1



LCD graphics display board
(LCD panel under board)

IR bottle sensor board

Photo 10. EUT – Internal view, Part # 8
IR Bottle Sensor Board, view 1

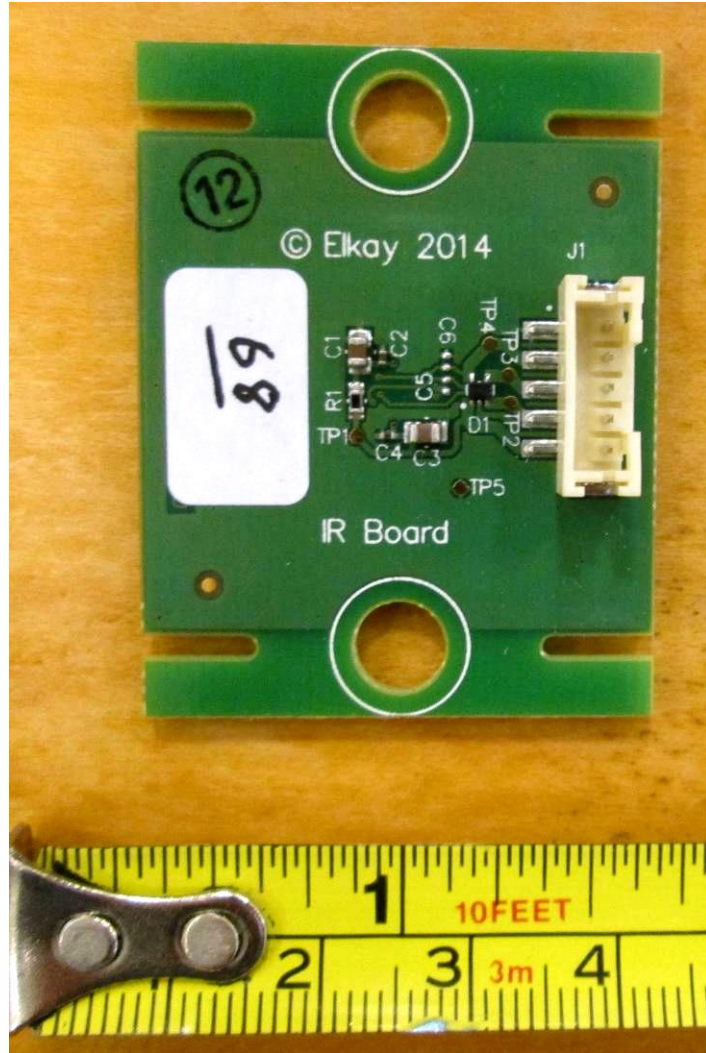


Photo 11. EUT – Internal view, Part # 8
IR Bottle Sensor Board, view 2

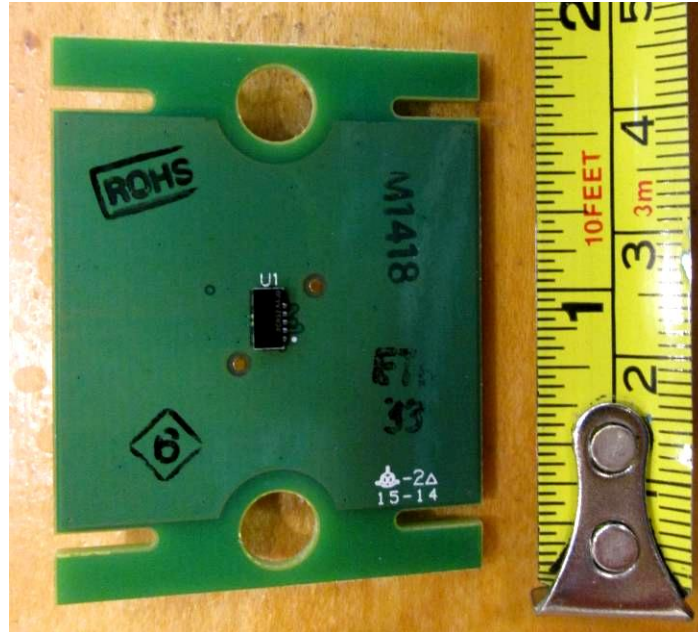


Photo 12. EUT – Internal view, Part # 9
LCD Graphics Display Board, view 1

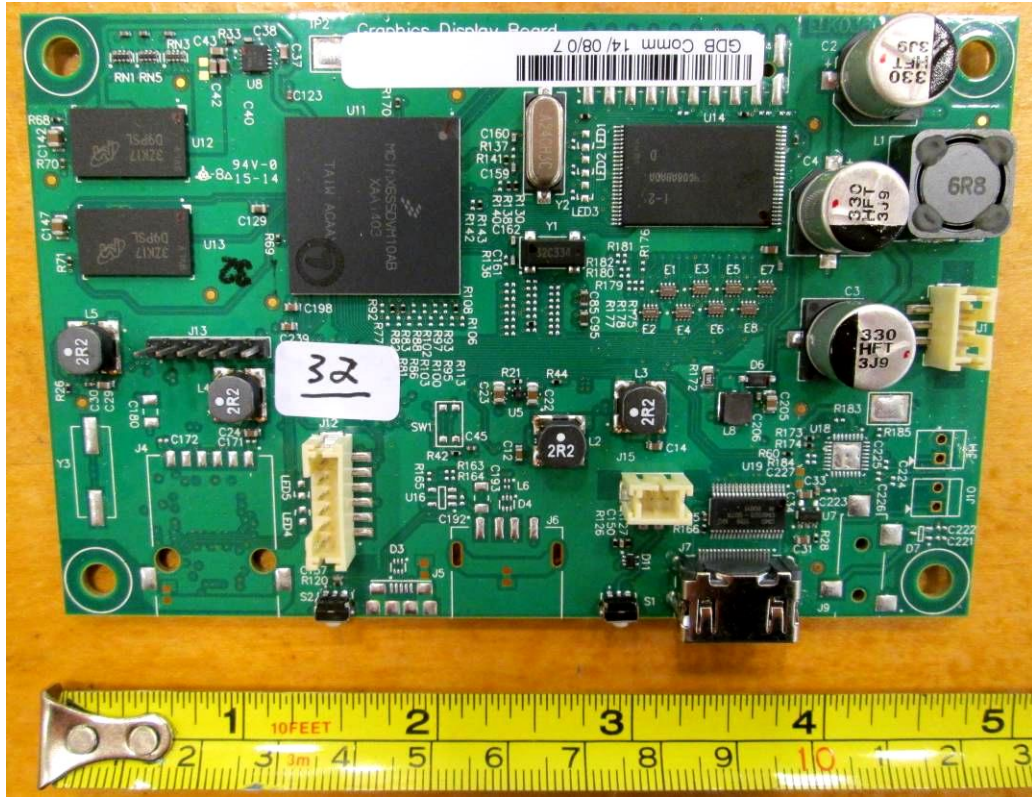


Photo 13. EUT – Internal view, Part # 9
LCD Graphics Display Board, view 2

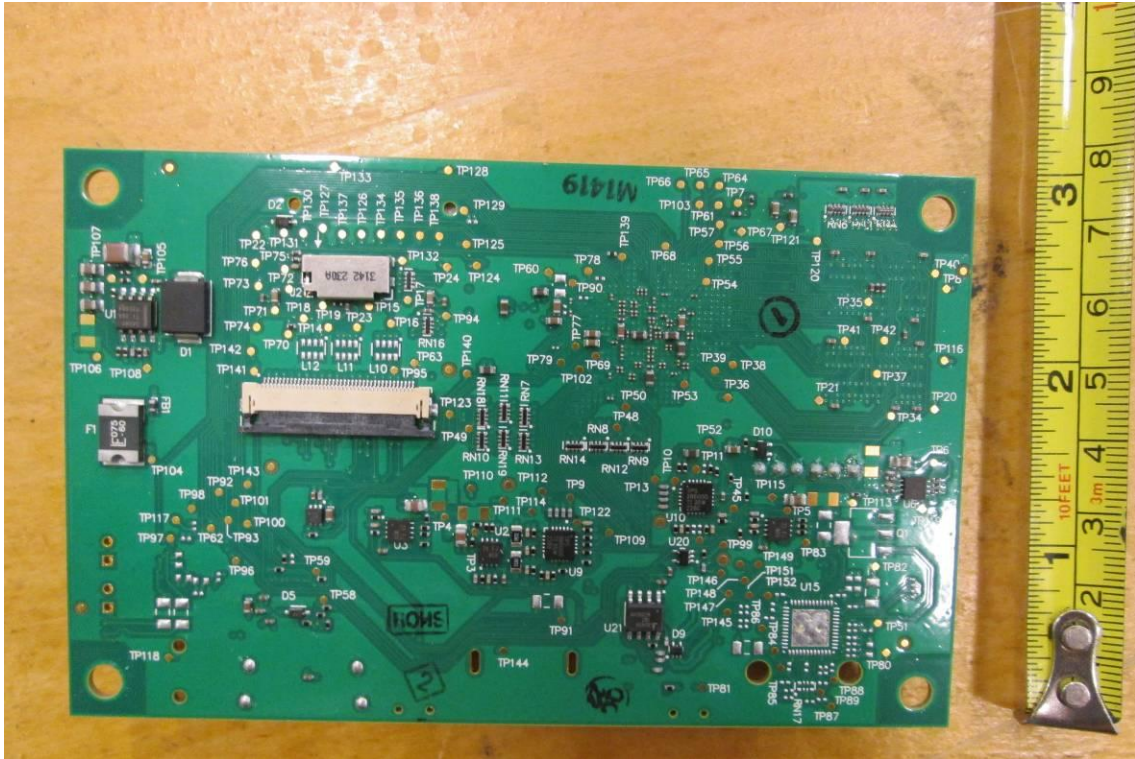


Photo 14. EUT – Internal view
LCD Panel (located under Part # 9), view 1



Photo 16. EUT – Interior view, Part # 10
Alpha-numeric Display, back panel opened

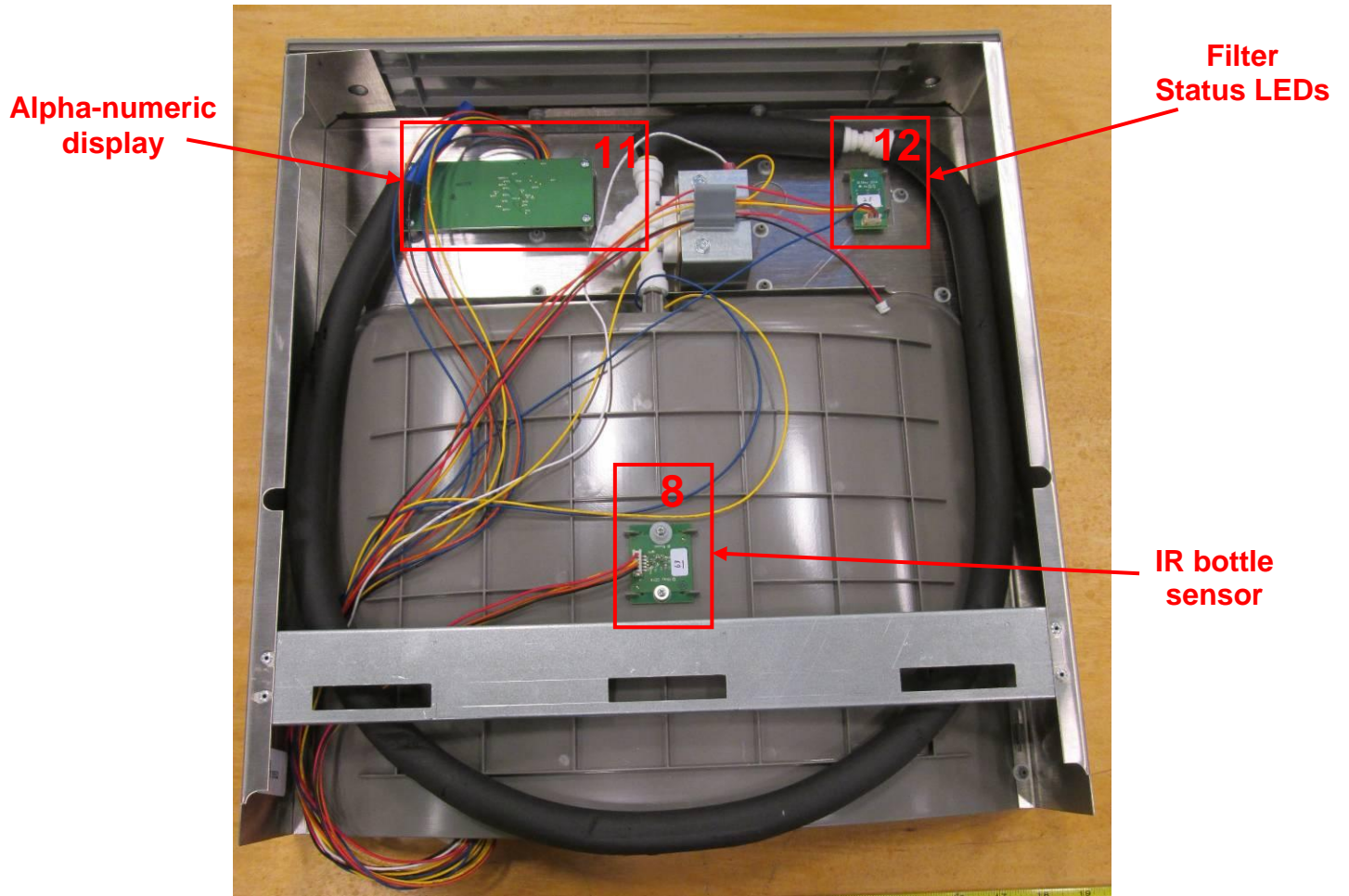


Photo 17. EUT – Internal view, Part # 11
Alpha-numeric Display Board, view 1

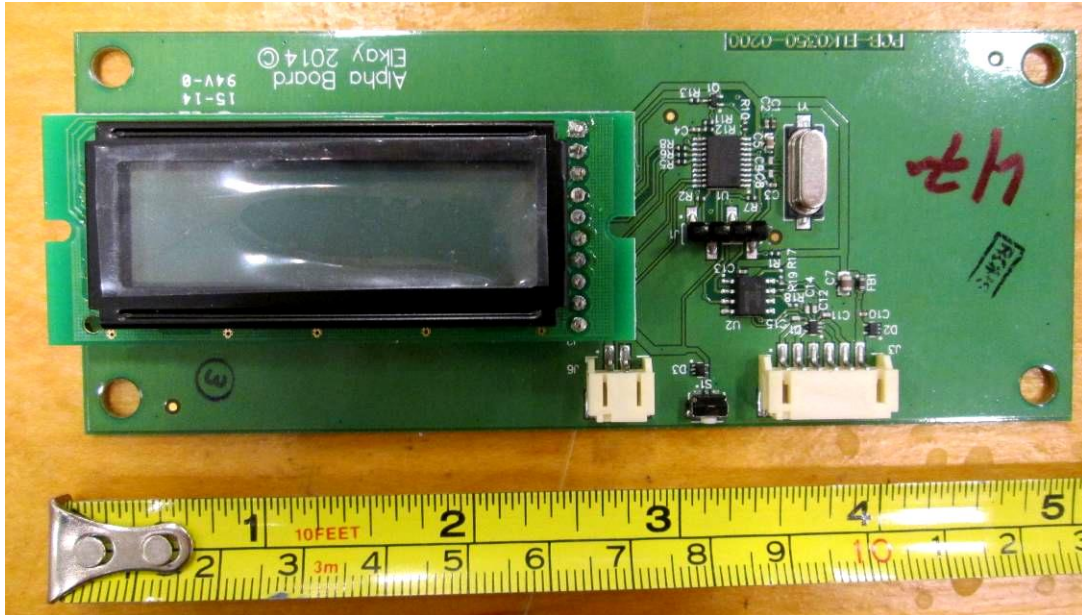


Photo 18. EUT – Internal view, Part # 11
Alpha-numeric Display Board, view 2

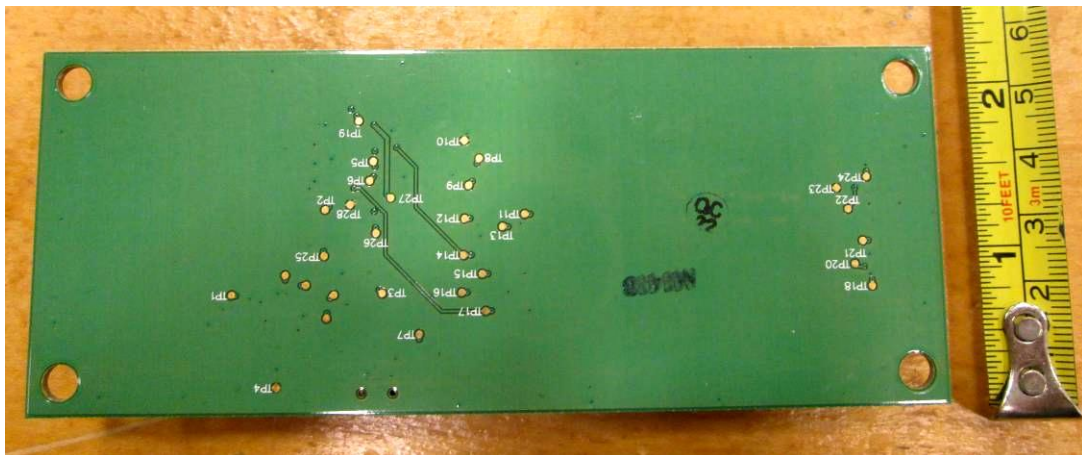


Photo 19. EUT – Internal view, Part # 12
Filter Status LED Board, view 1



Photo 20. EUT – Internal view, Part # 12
Filter Status LED Board, view 2

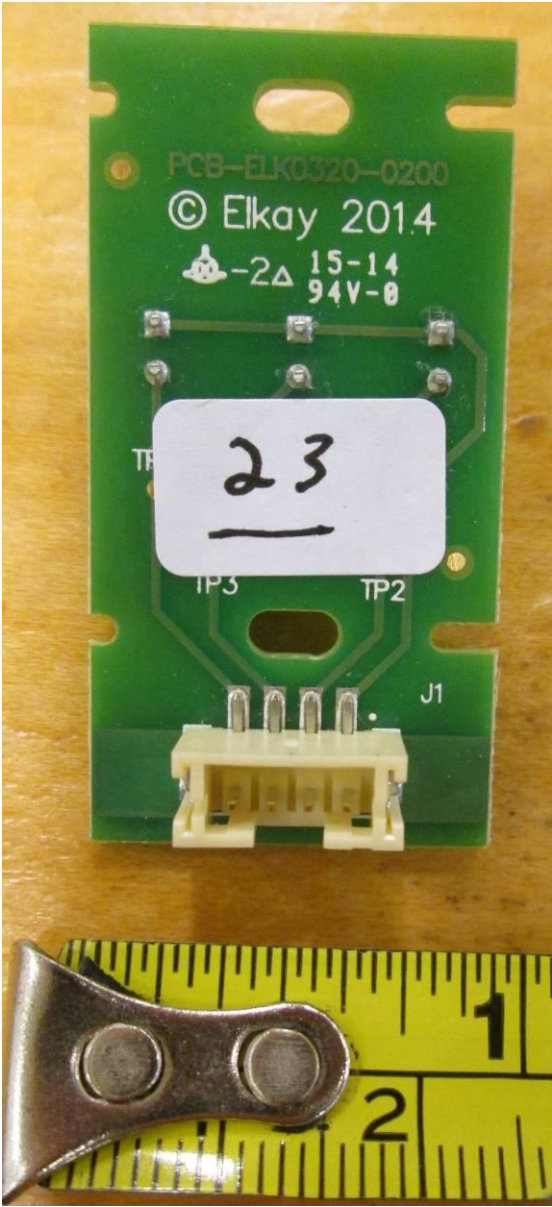


Photo 21. EUT – Internal view, Part # 5
Close-up of 900 MHz Antenna, installed in unit.

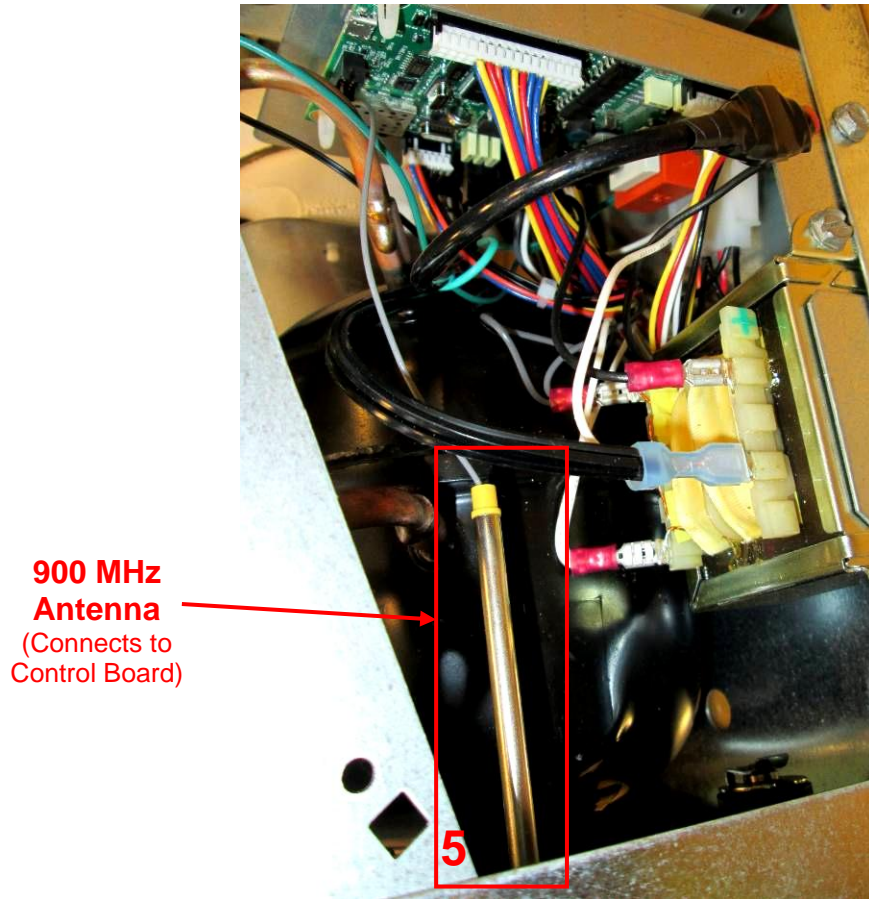


Photo 22. EUT – Internal view, Part # 5
Close-up of 900 MHz Antenna, removed from unit.

