

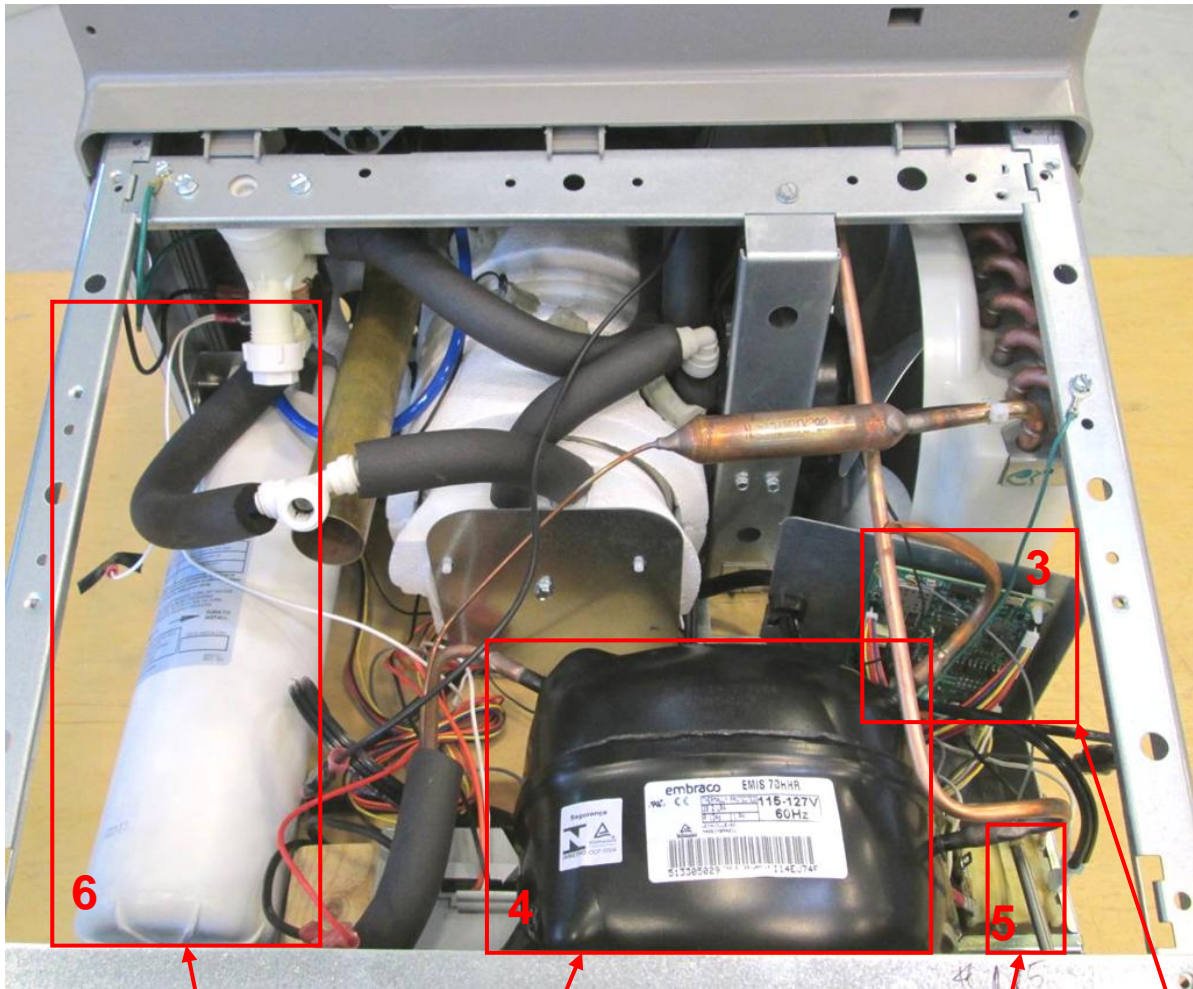
Internal Photos

Refer also to External Photos for references

Photo 1. EUT – Internal view, Fountain detached from display, view 1
Enclosure opened



Photo 2. EUT – Internal view, Fountain detached from display, view 2
Enclosure opened, close-up of front



6

Filter

4

Refrigeration
Unit

5

900 MHz
Antenna
(Connects to
Control Board)

3

Control
Board

Photo 3. EUT – Internal view, Fountain detached from display, view 3
Enclosure opened, close-up of back

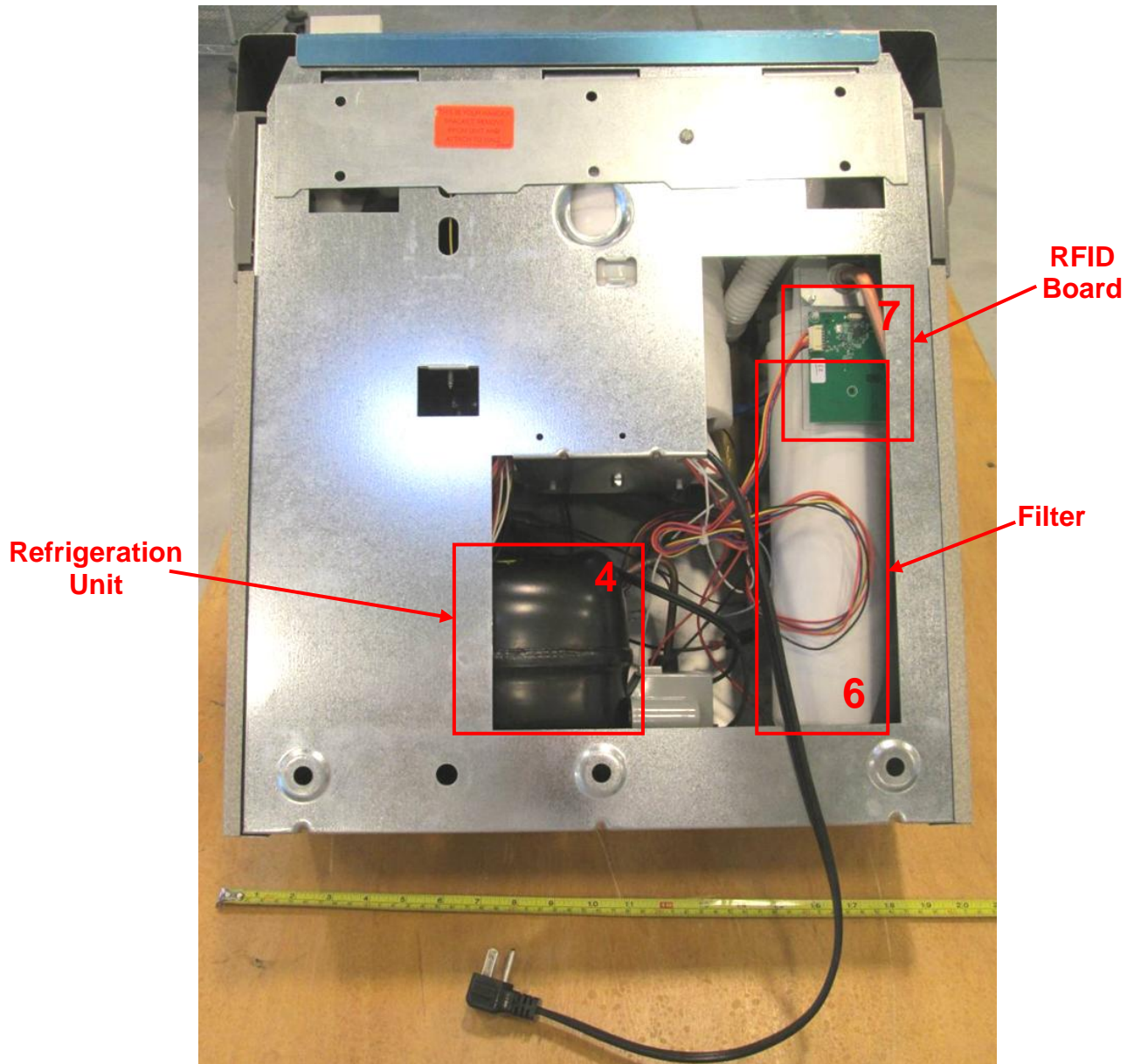
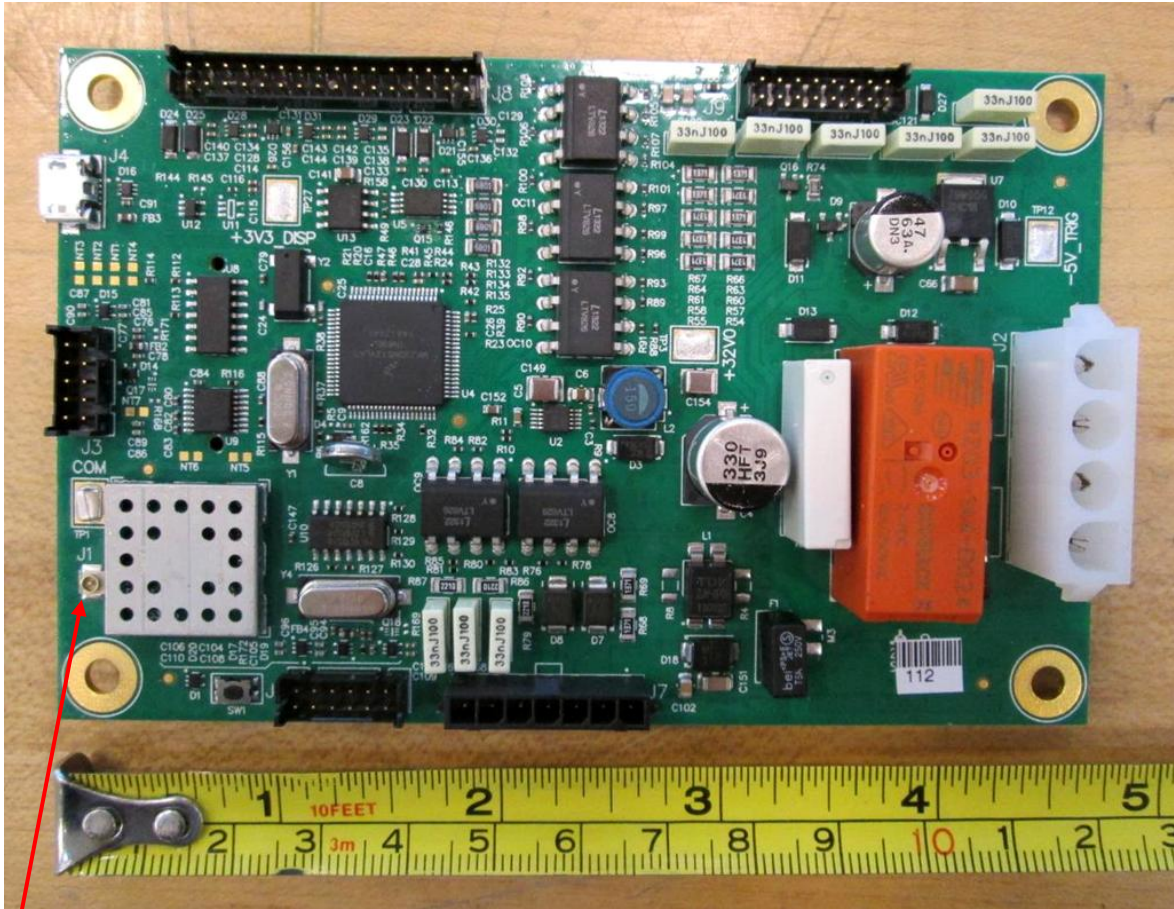


Photo 4. EUT – Internal view, Part # 3
Control Board, View 1



900 MHz
antenna
connector

Photo 5. EUT – Internal view, Part # 3
Control Board, View 2, shield removed

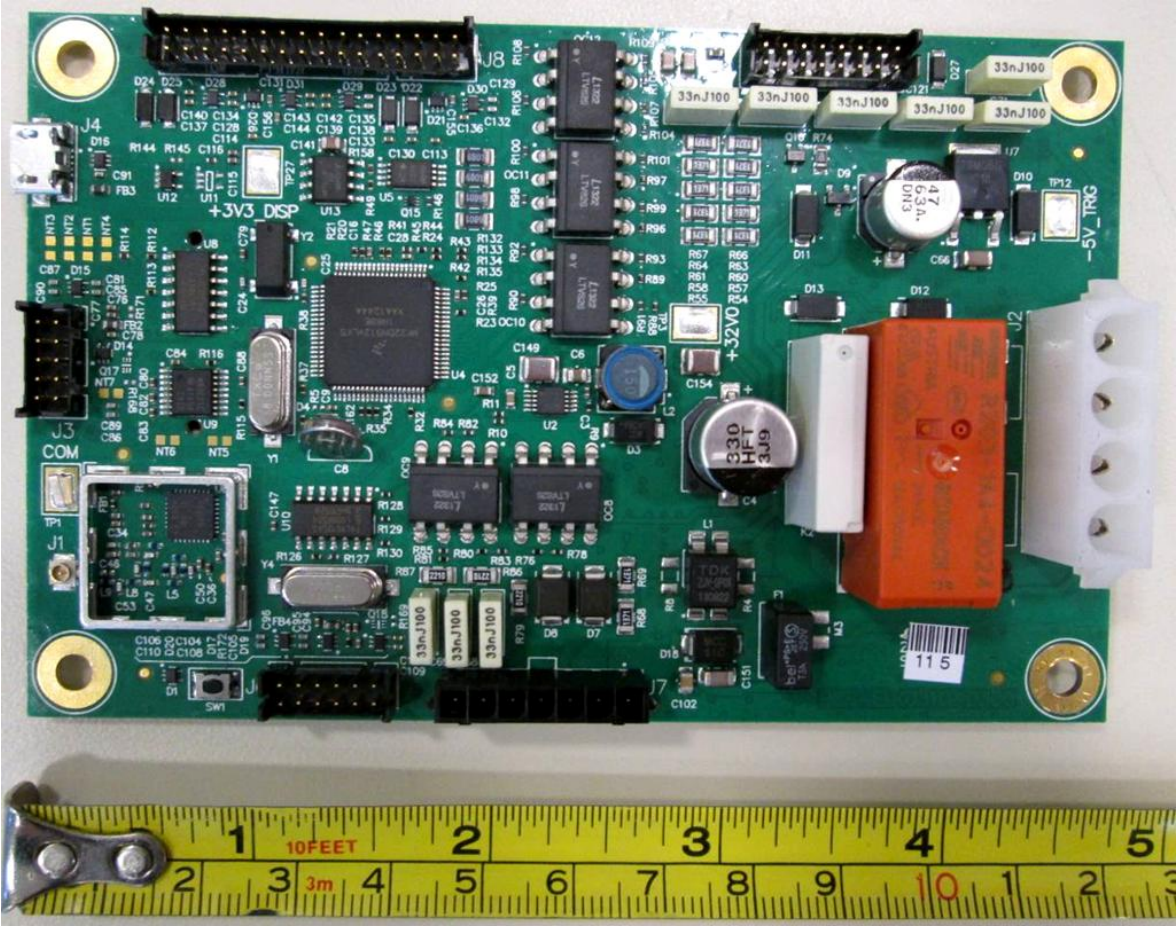


Photo 6. EUT – Internal view, Part # 3
Control Board, View 3

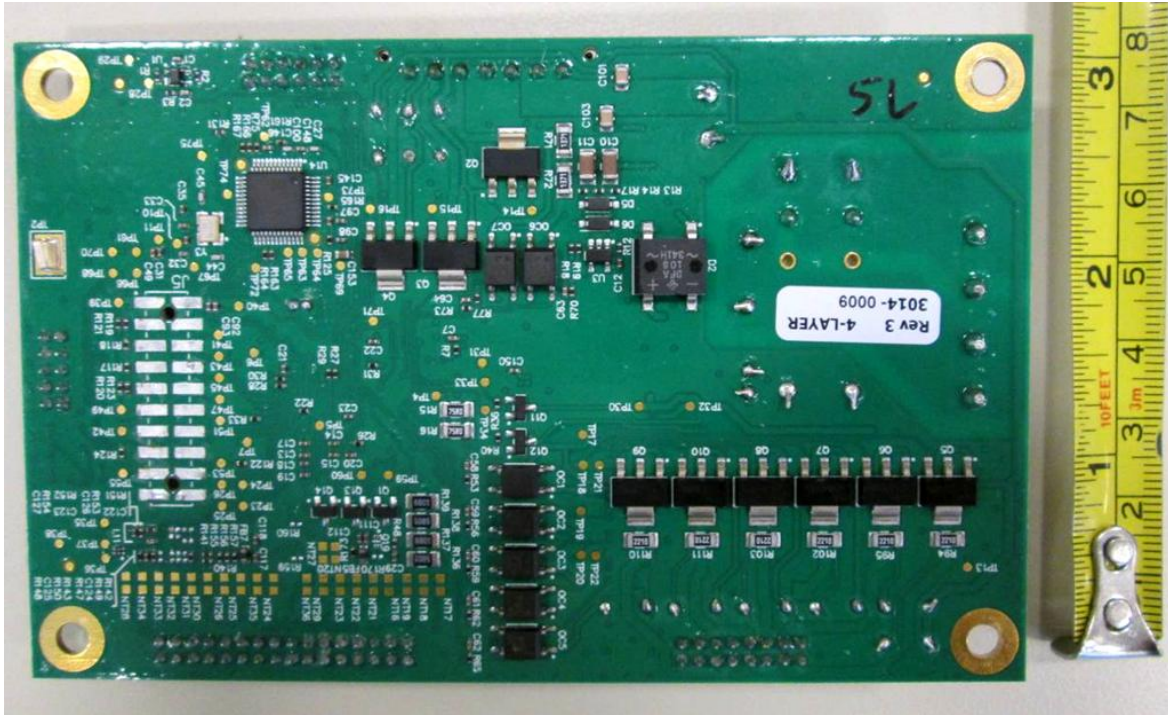


Photo 7. EUT – Internal view, Part # 7
RFID Board, View 1

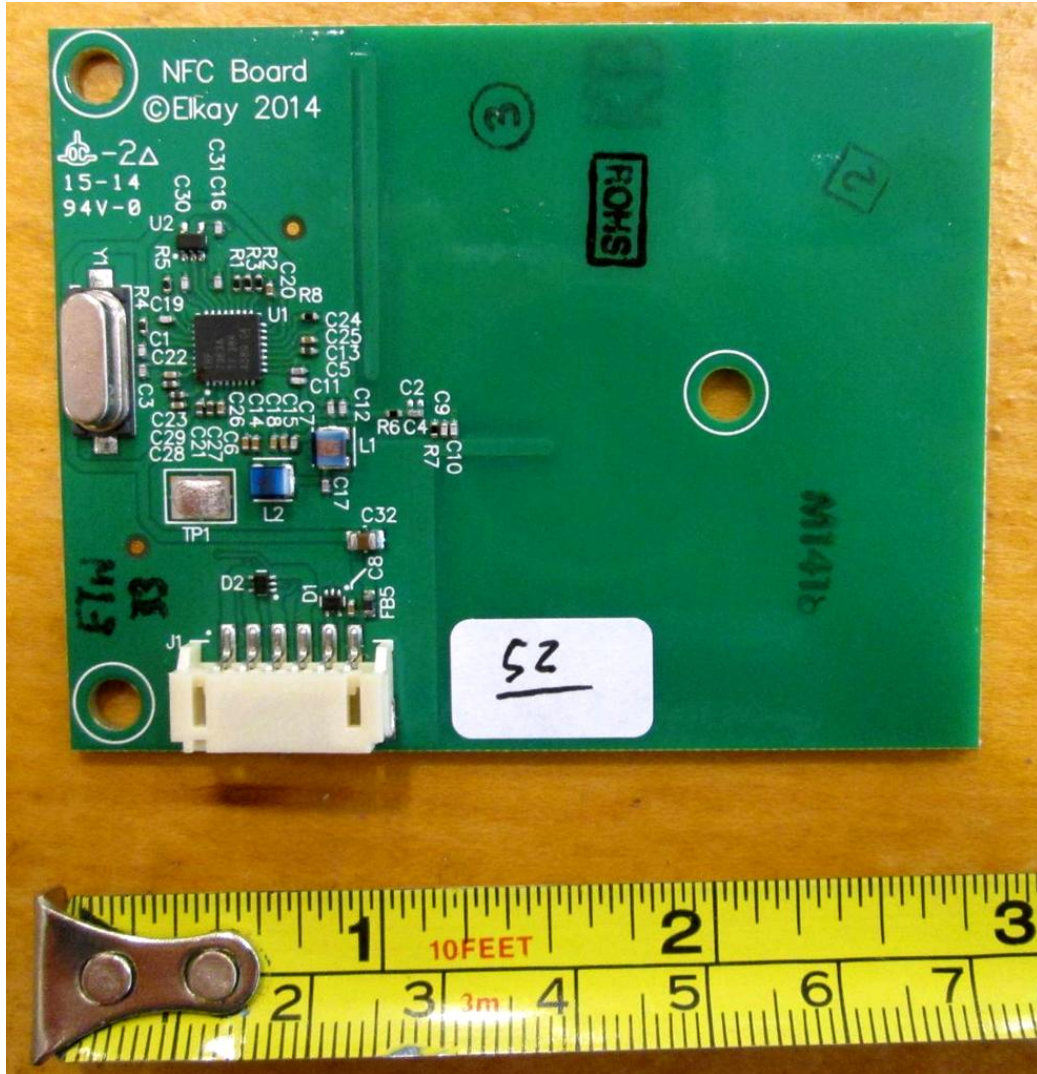


Photo 8. EUT – Internal view, Part # 7
RFID Board, View 2

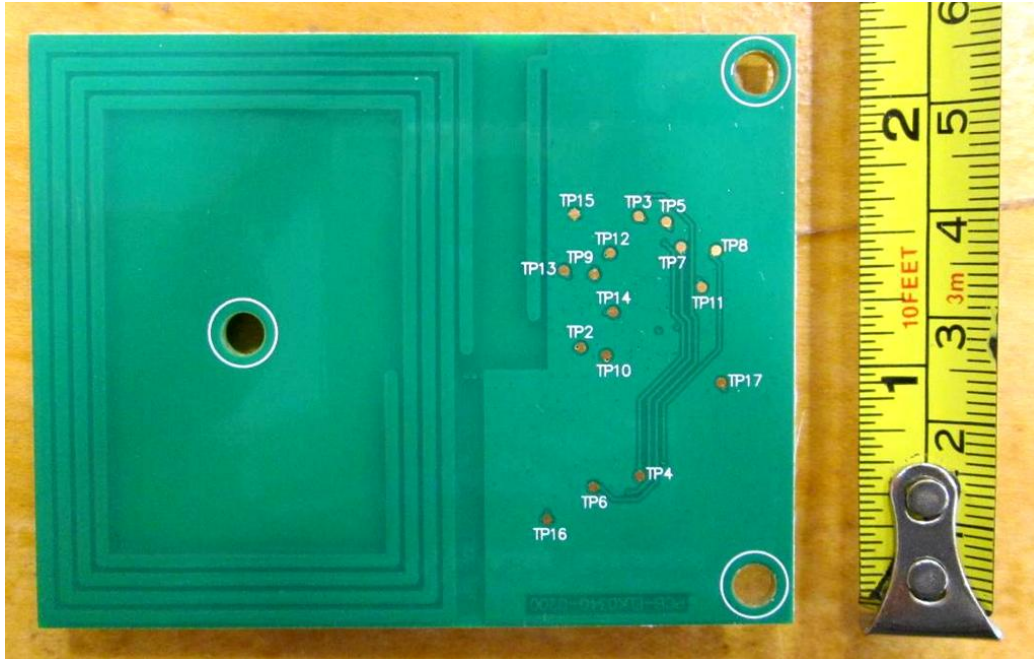
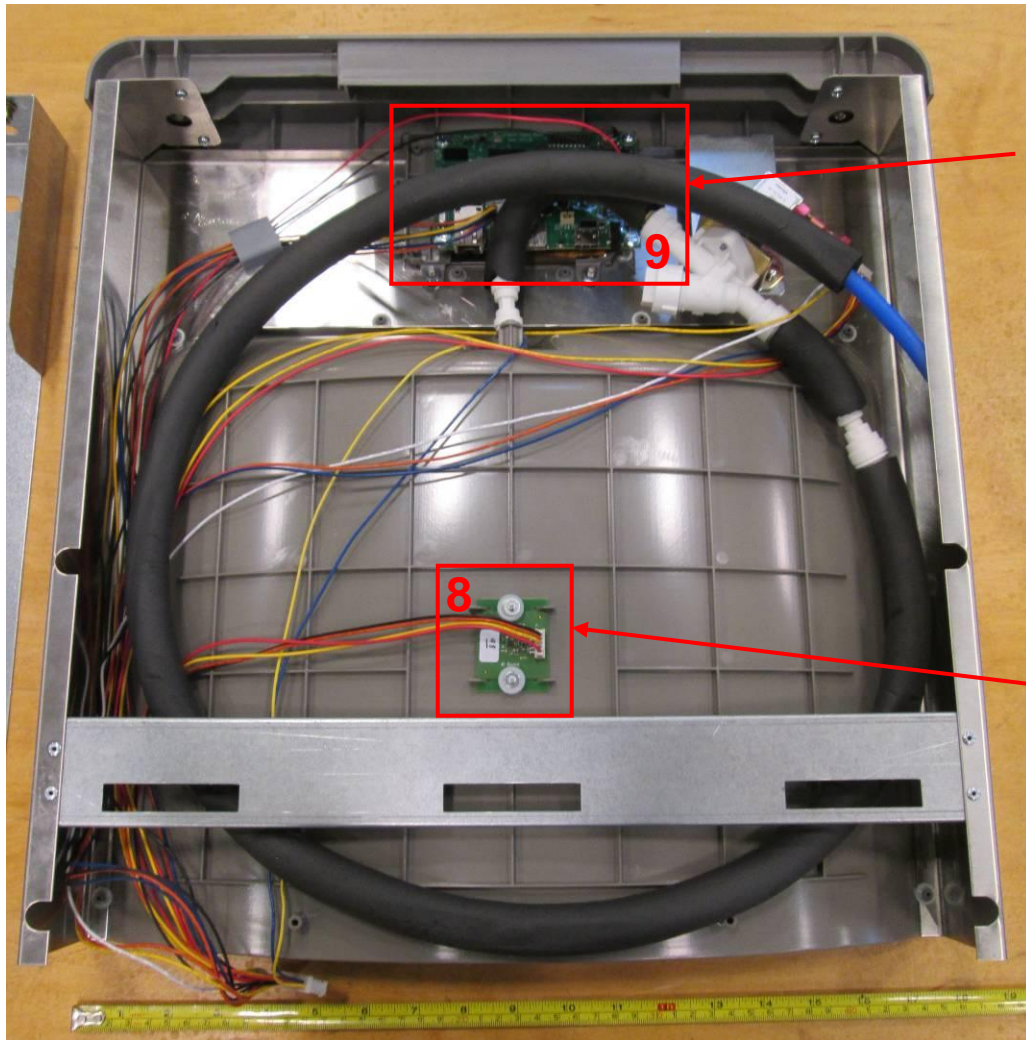


Photo 9. EUT – Internal view, Part # 1
Graphics Display & Bottle Filler, back panel opened, view 1



LCD graphics display board
(LCD panel under board)

IR bottle sensor board

Photo 10. EUT – Internal view, Part # 8
IR Bottle Sensor Board, view 1

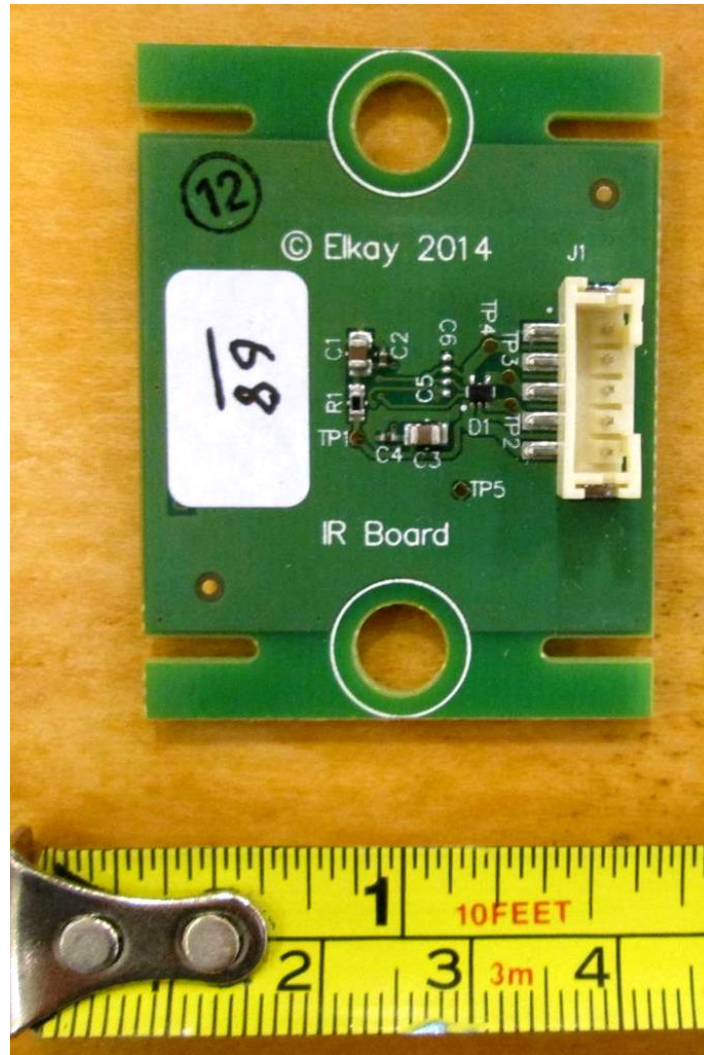


Photo 11. EUT – Internal view, Part # 8
IR Bottle Sensor Board, view 2

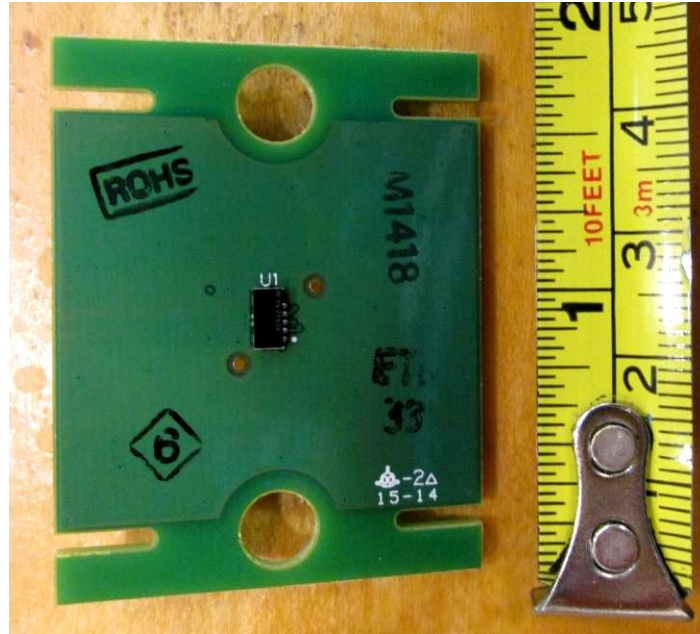


Photo 12. EUT – Internal view, Part # 9
LCD Graphics Display Board, view 1

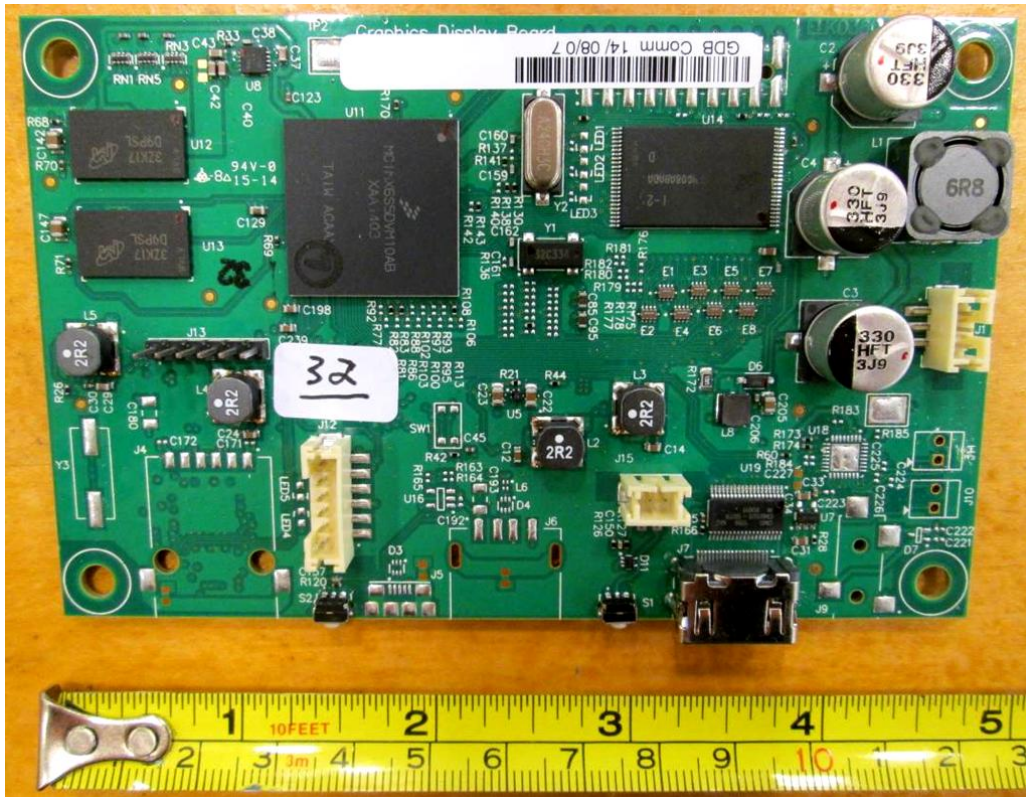


Photo 13. EUT – Internal view, Part # 9
LCD Graphics Display Board, view 2

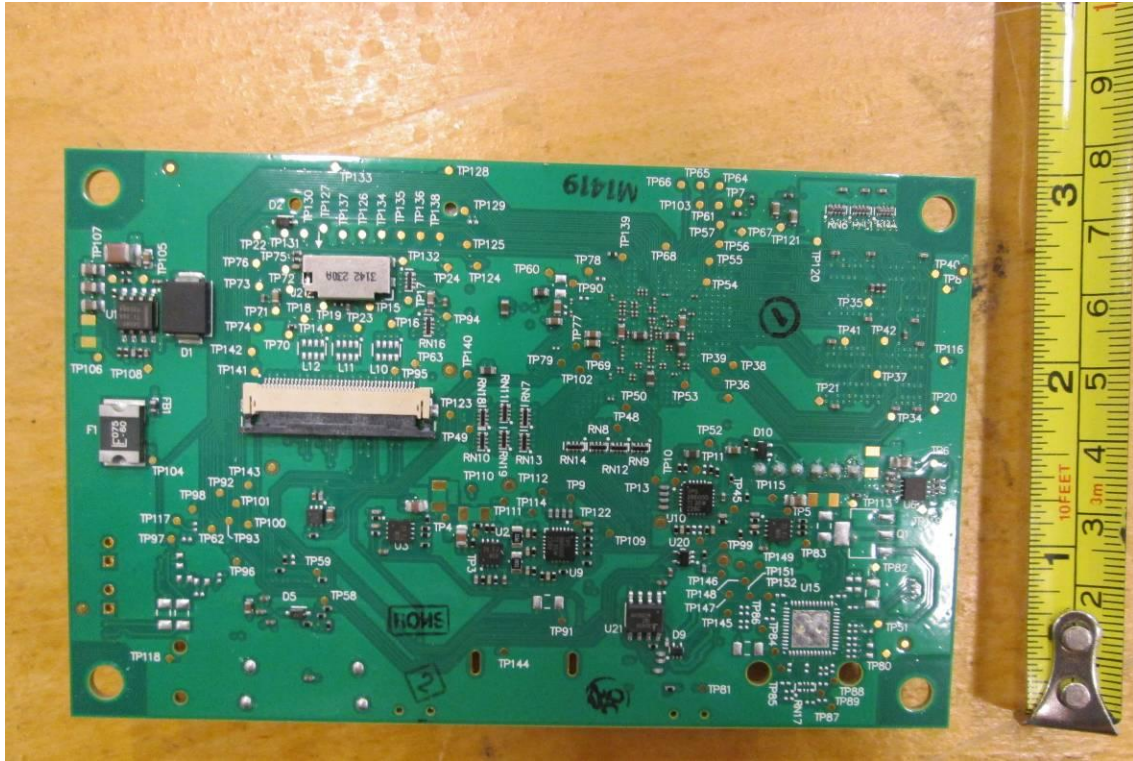


Photo 14. EUT – Internal view
LCD Panel (located under Part # 9), view 1



Photo 15. EUT – Internal view
LCD Panel (located under Part # 9), view 2



Photo 16. EUT – Interior view, Part # 10
Alpha-numeric Display, back panel opened

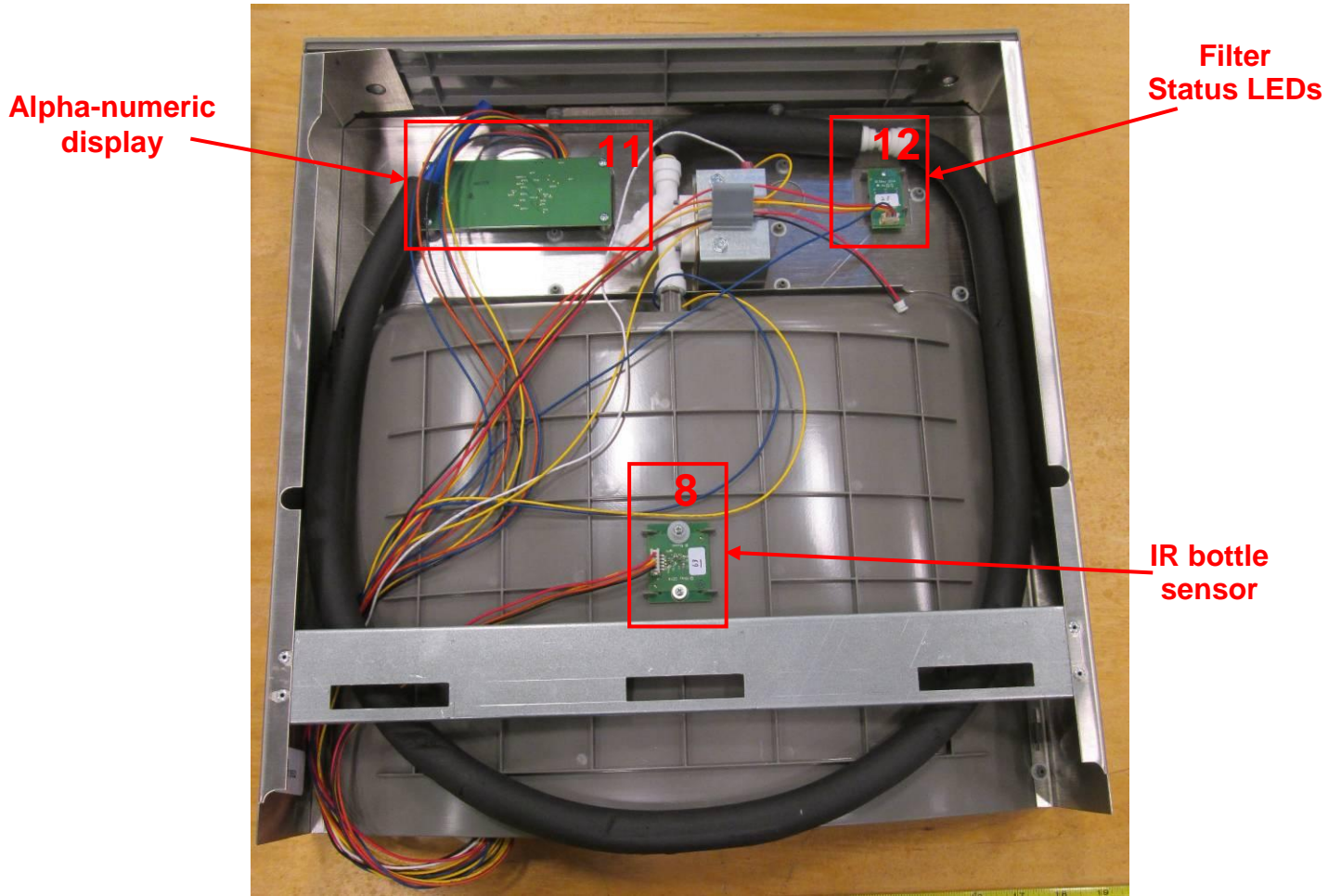


Photo 17. EUT – Internal view, Part # 11
Alpha-numeric Display Board, view 1



Photo 18. EUT – Internal view, Part # 11
Alpha-numeric Display Board, view 2

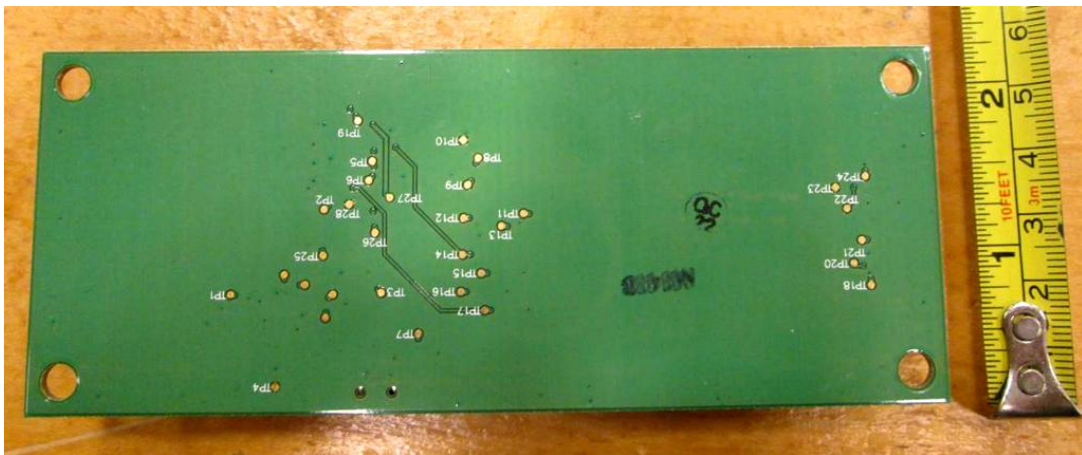


Photo 19. EUT – Internal view, Part # 12
Filter Status LED Board, view 1



Photo 20. EUT – Internal view, Part # 12
Filter Status LED Board, view 2

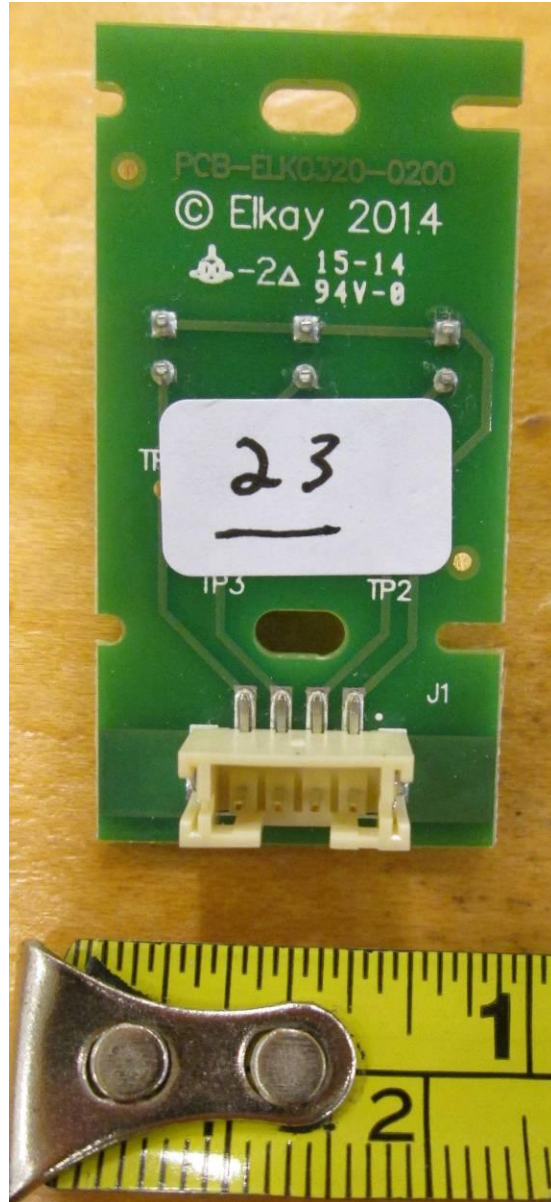


Photo 21. EUT – Internal view, Part # 5
Close-up of 900 MHz Antenna, installed in unit.

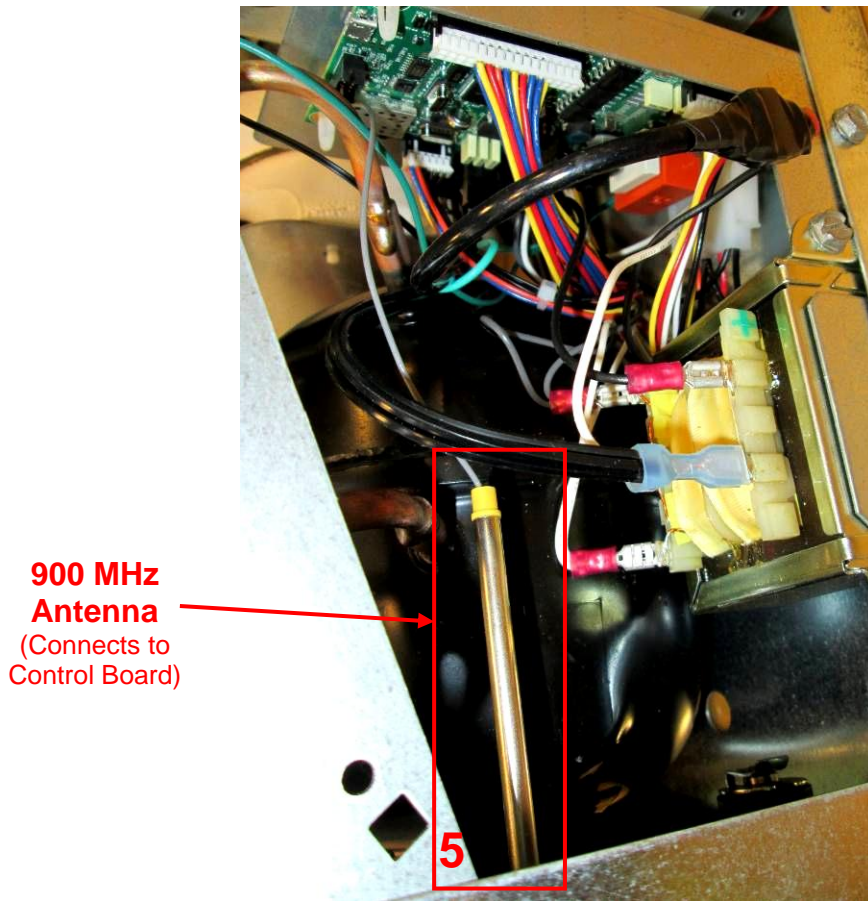


Photo 22. EUT – Internal view, Part # 5
Close-up of 900 MHz Antenna, removed from unit.

