

Internal Photos

Refer also to External Photos for reference

Photo 1. EUT – Internal view, Fountain detached from display, view 1
Enclosure opened

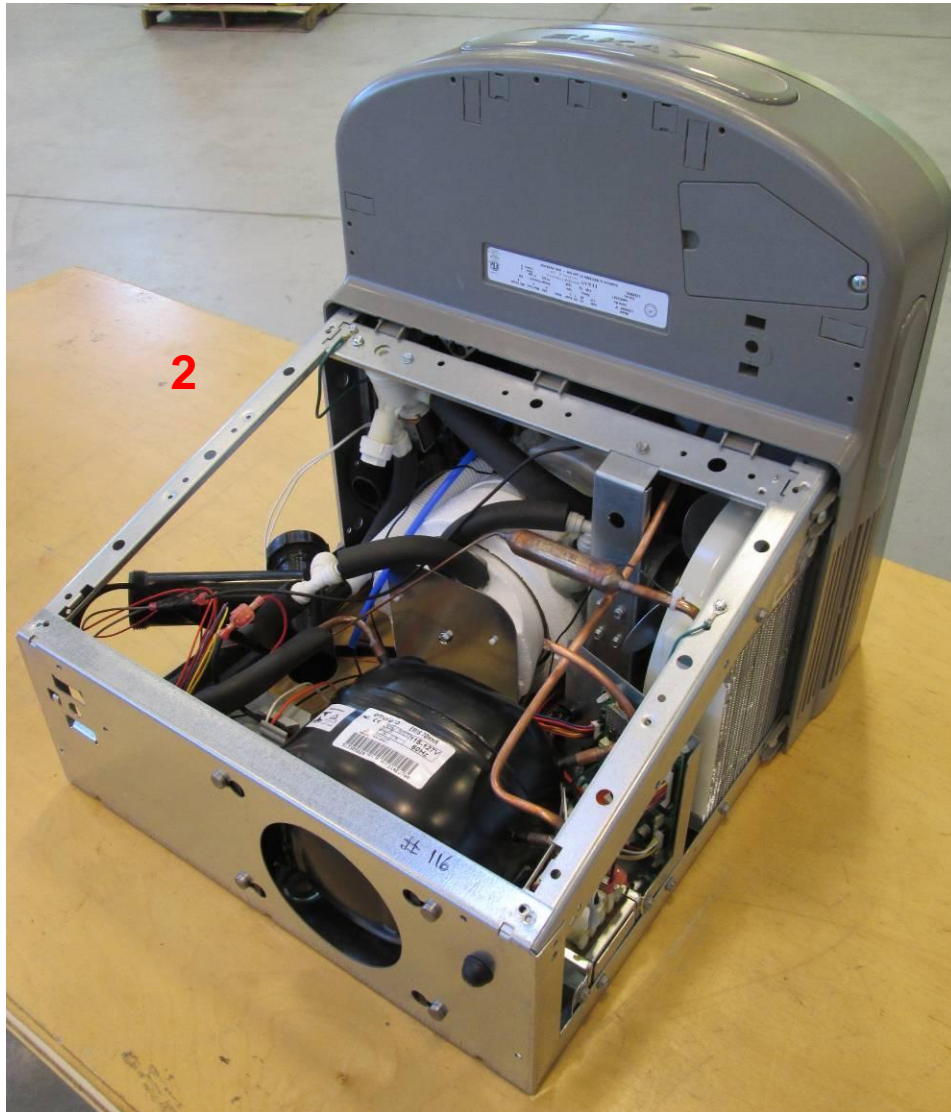


Photo 2. EUT – Internal view, Fountain detached from display, view 2
Enclosure opened, close-up of front

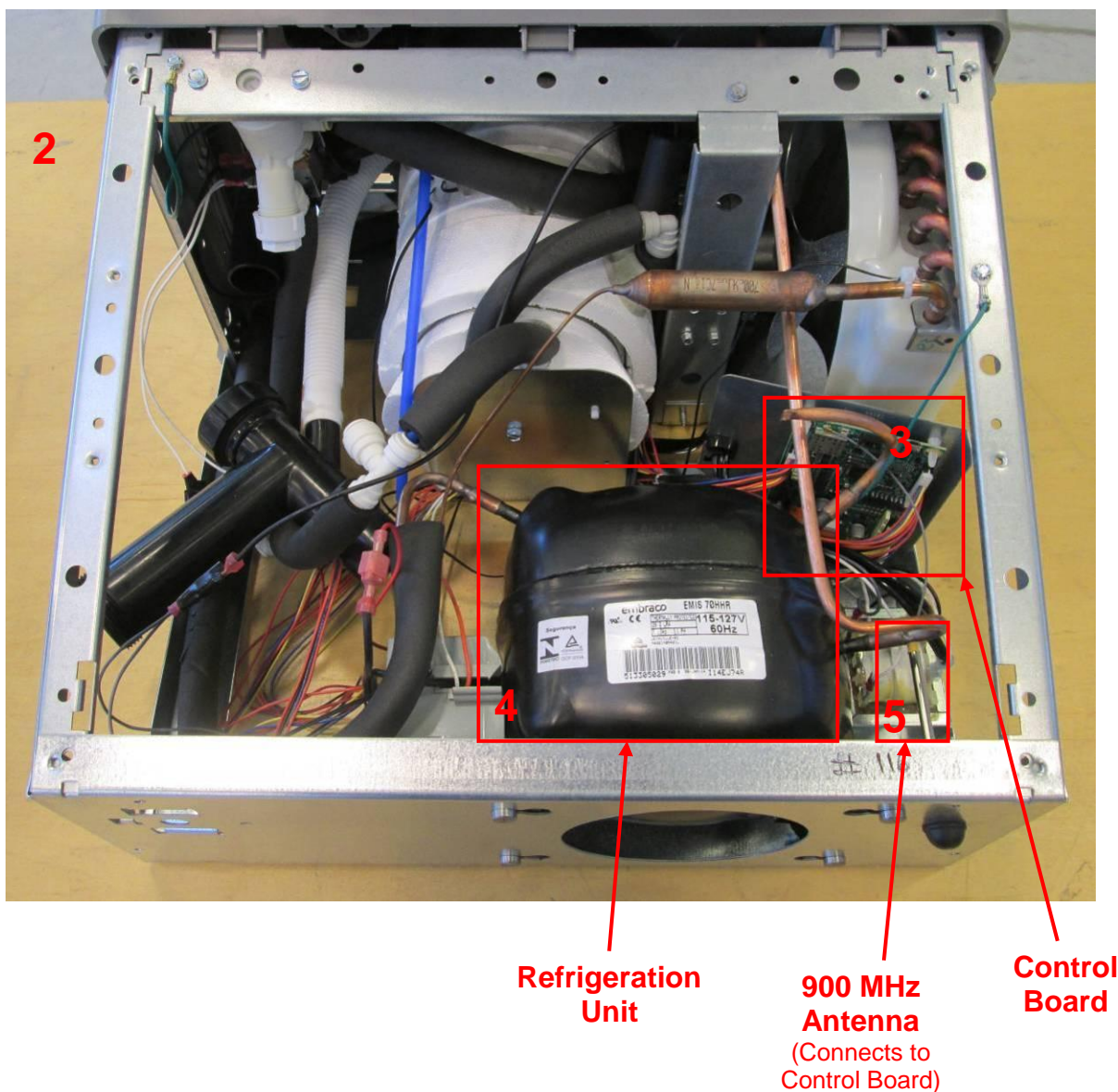
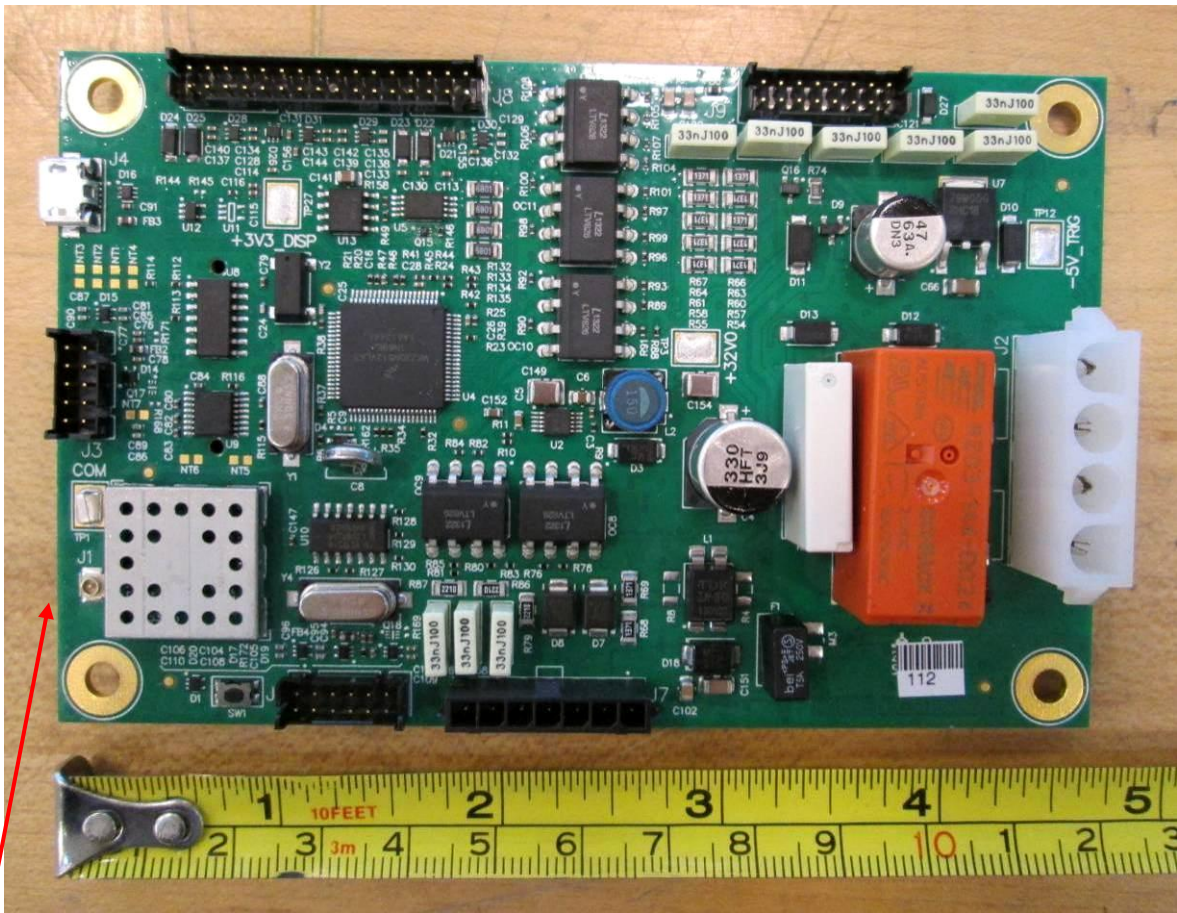


Photo 3. EUT – Internal view, Part # 3
Control Board, View 1



900 MHz
antenna
connector

Photo 4. EUT – Internal view, Part # 3
Control Board, View 2, shield removed

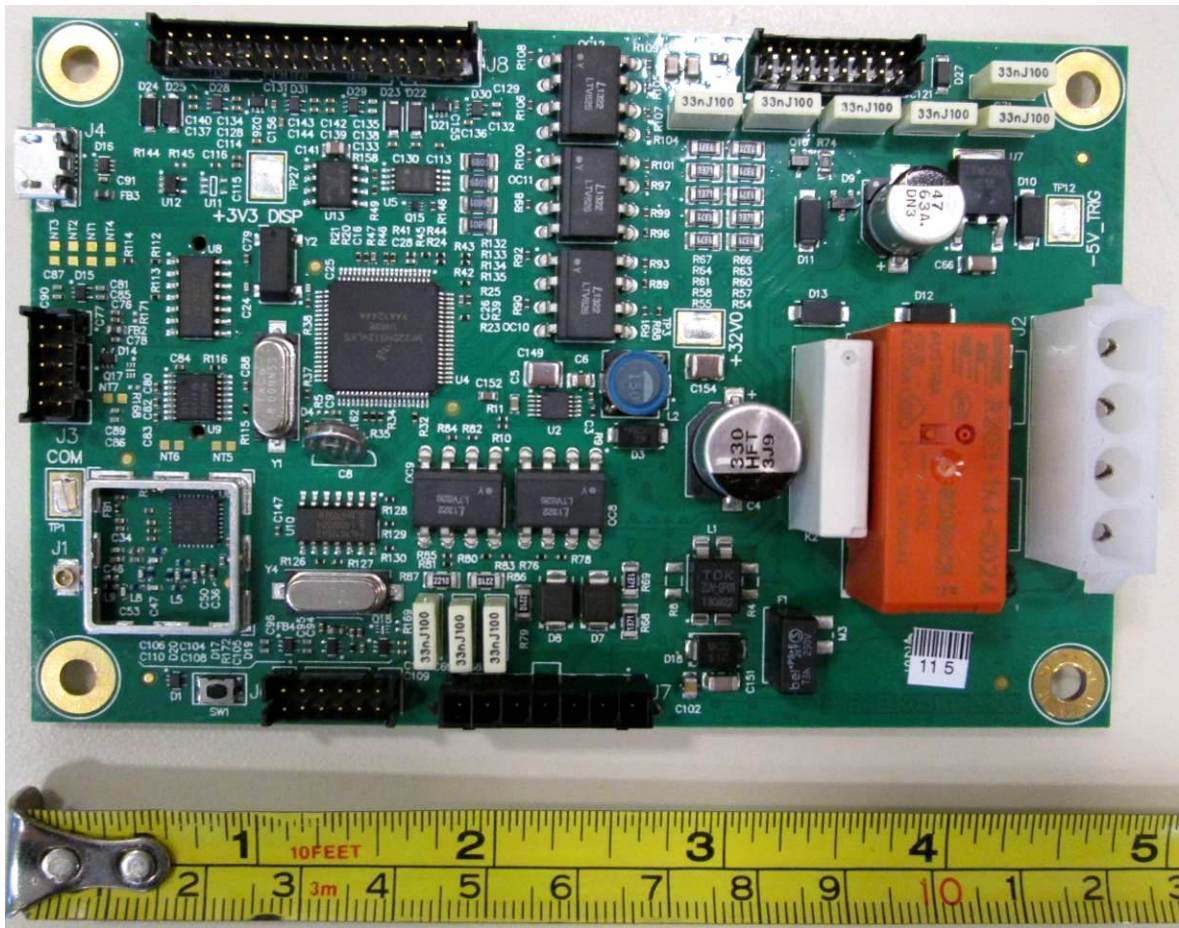


Photo 5. EUT – Internal view, Part # 3
Control Board, View 3

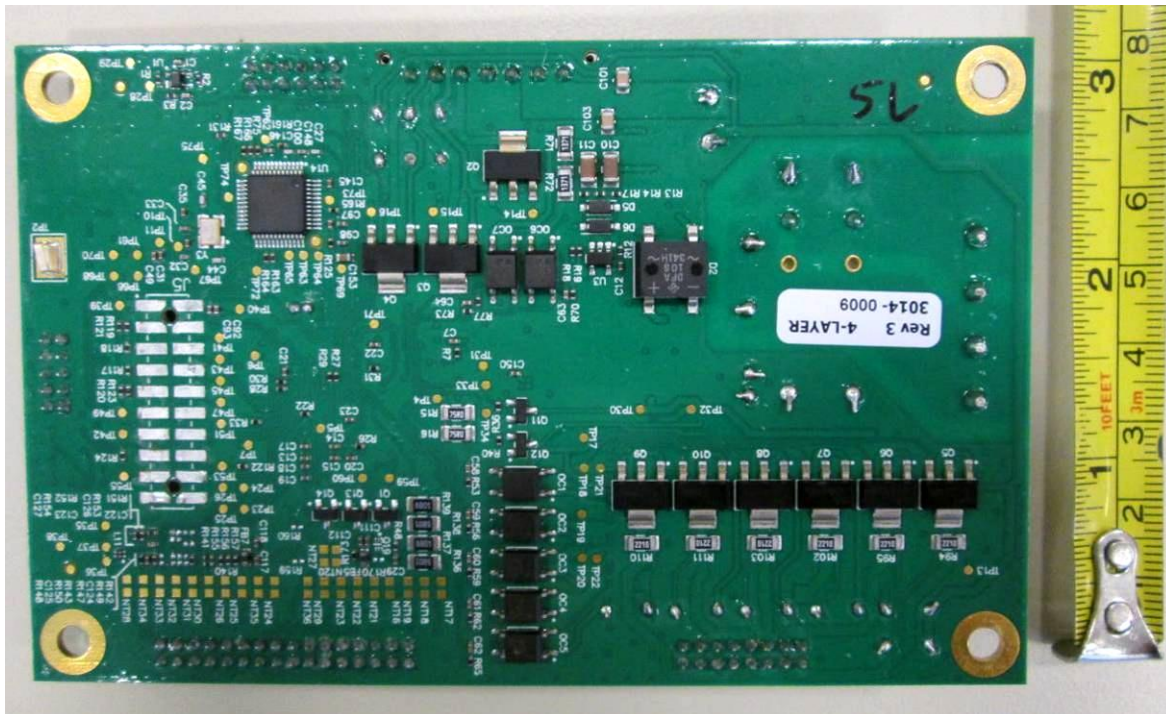


Photo 6. EUT – Interior view, Part # 1
Alpha-numeric Display, back panel opened

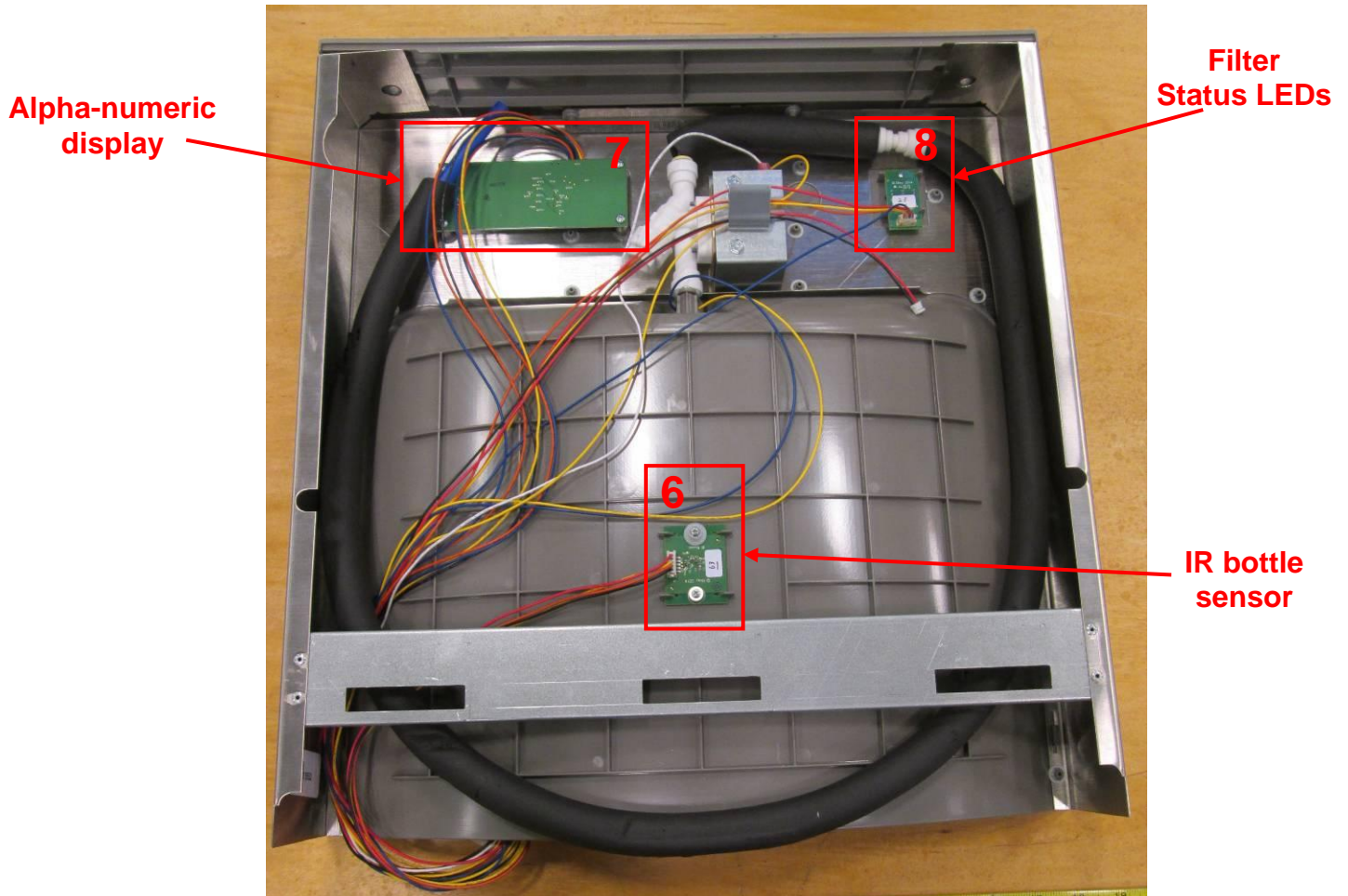


Photo 7. EUT – Internal view, Part # 6
IR Bottle Sensor Board, view 1

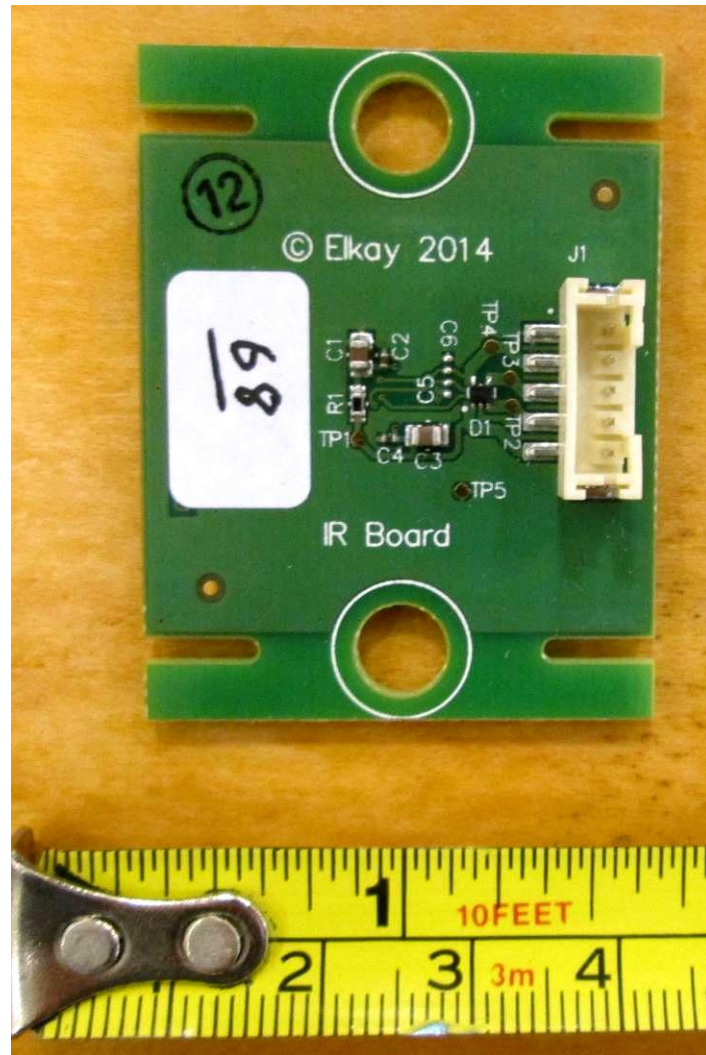


Photo 8. EUT – Internal view, Part # 6
IR Bottle Sensor Board, view 2

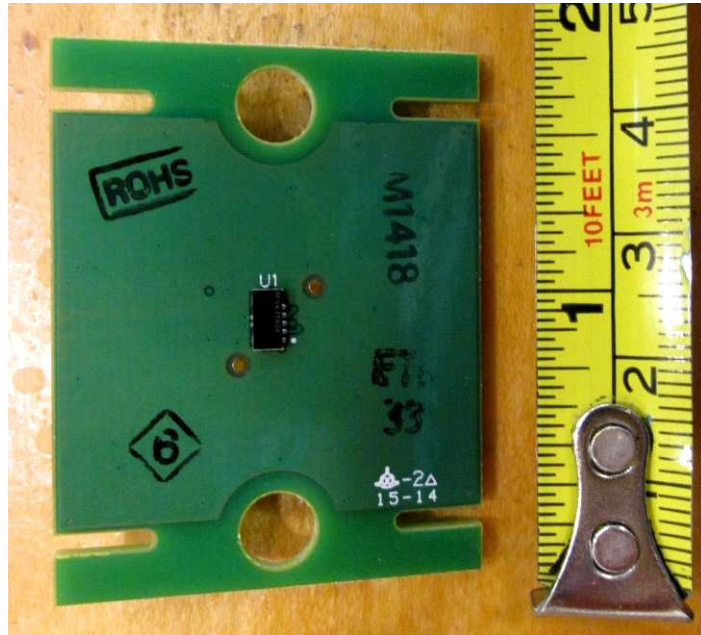


Photo 9. EUT – Internal view, Part # 7
Alpha-numeric Display Board, view 1



Photo 10. EUT – Internal view, Part # 7
Alpha-numeric Display Board, view 2

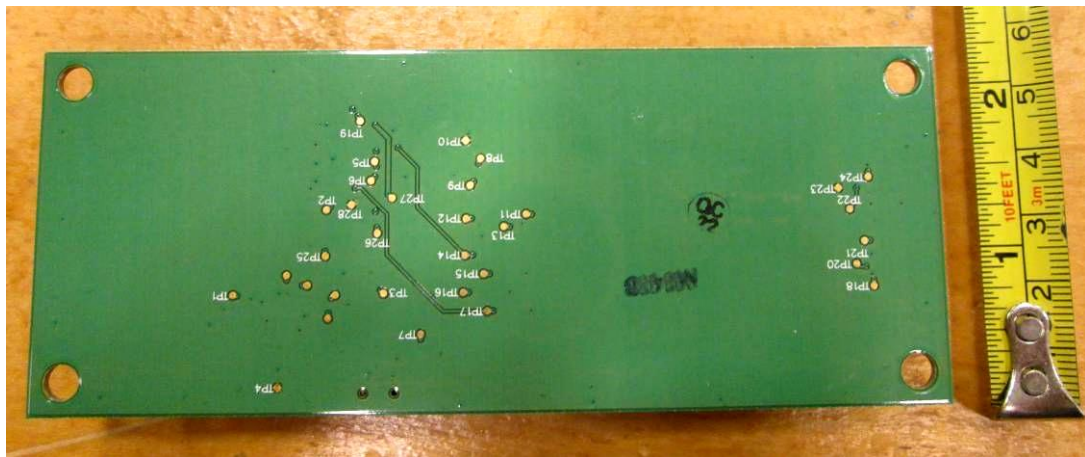


Photo 11. EUT – Internal view, Part # 8
Filter Status LED Board, view 1



Photo 12. EUT – Internal view, Part # 8
Filter Status LED Board, view 2

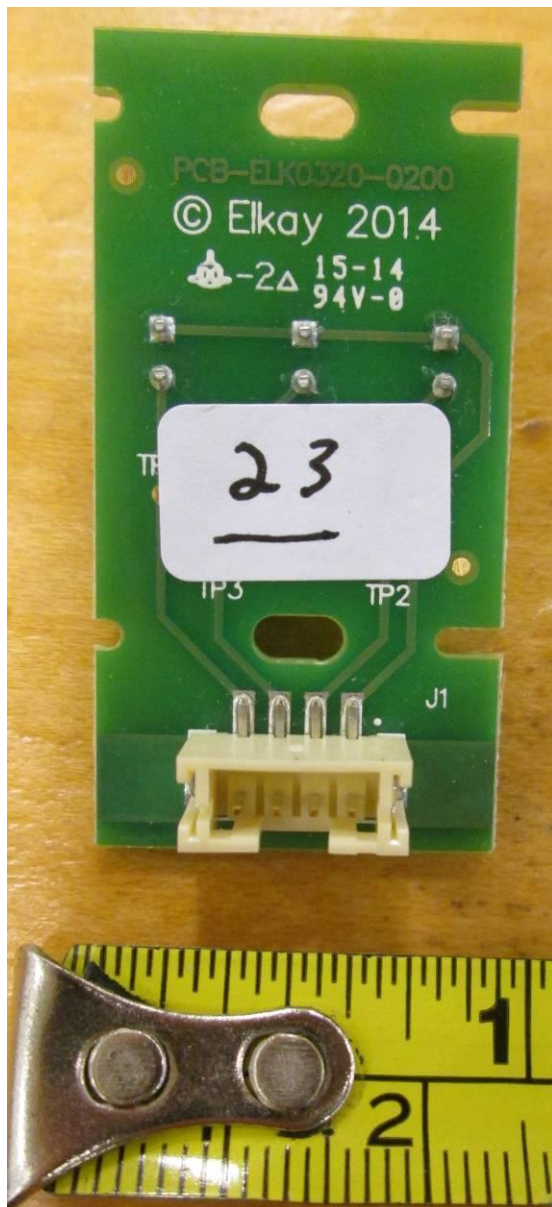


Photo 13. EUT – Internal view, Part # 5
Close-up of 900 MHz Antenna, installed in unit.

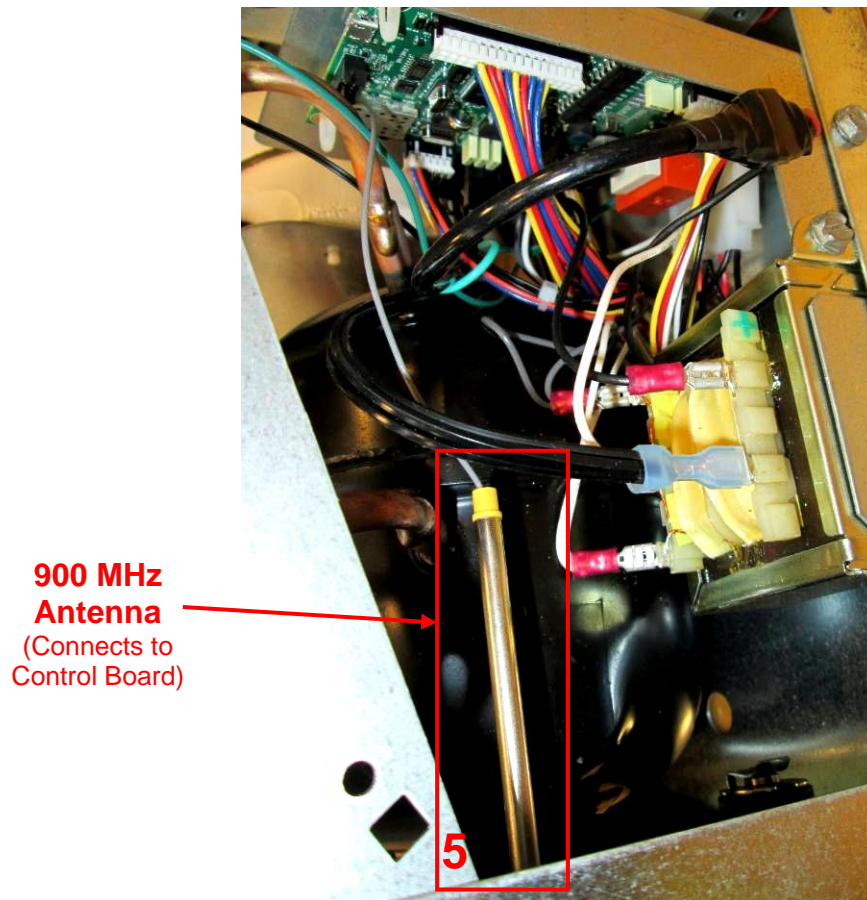


Photo 14. EUT – Internal view, Part # 5
Close-up of 900 MHz Antenna, removed from unit.

