



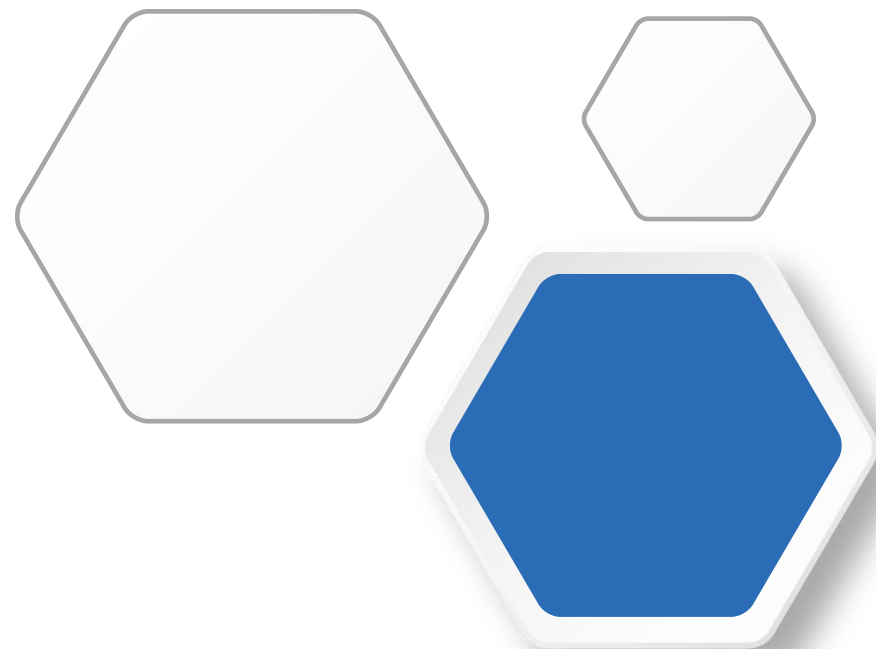
拓频物联

T10天线报告



射频:李东海

时间:2023.04.21





基础信息

Basic information



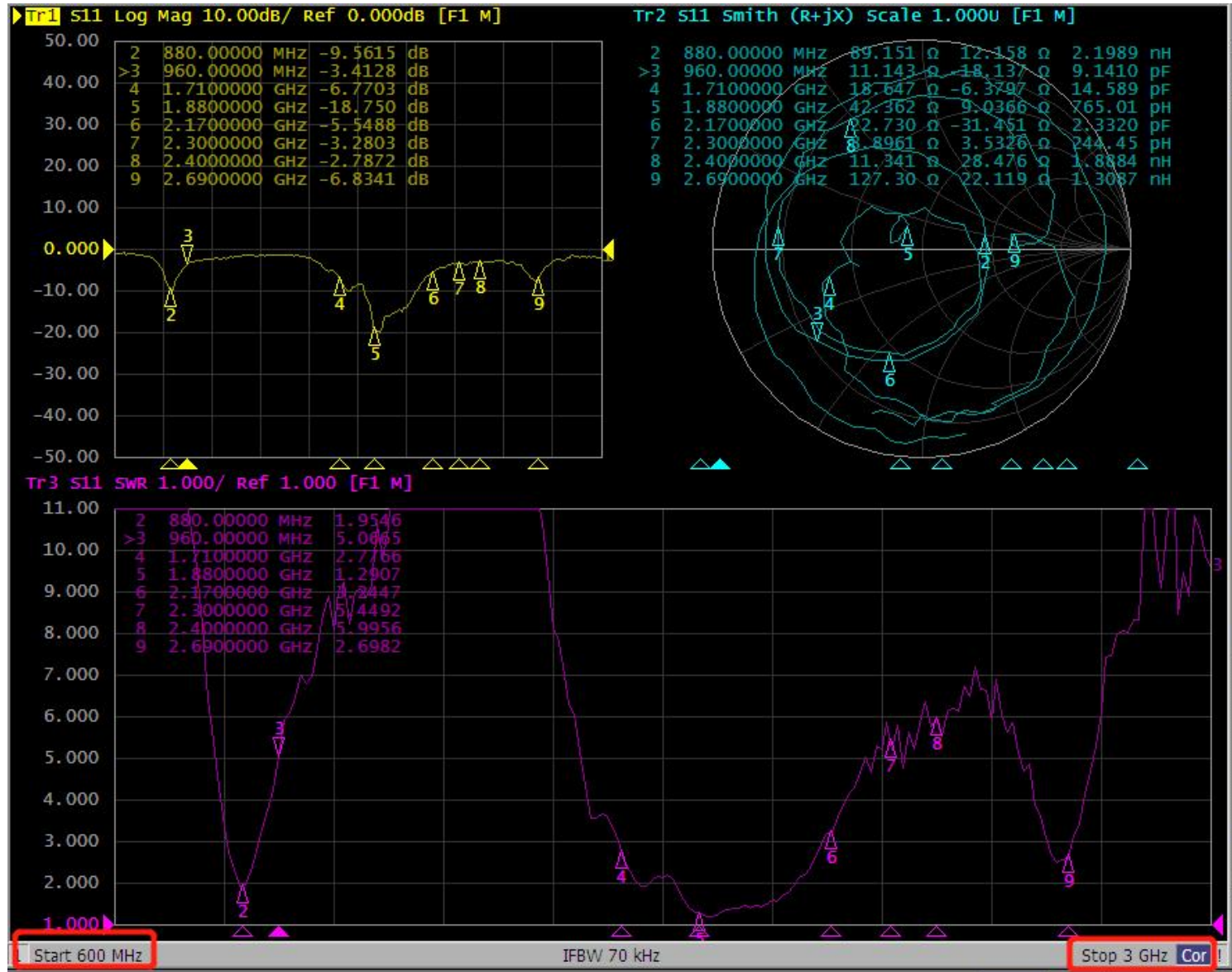
Machine data

- Model : T10
- Band : FDD:B1/B2/B3/B5/B8/B12
B13/B17/B18/B19/B20/B25/B26/B28,
BT/WIFI2.4G



Test data

LTE antenna passive diagram-(SWR/Log Mag/Smith)

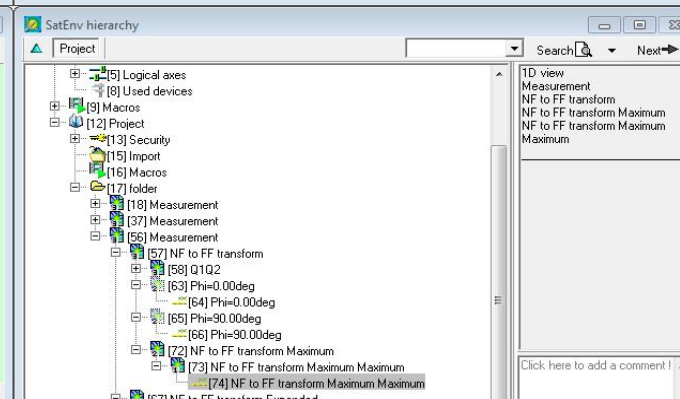
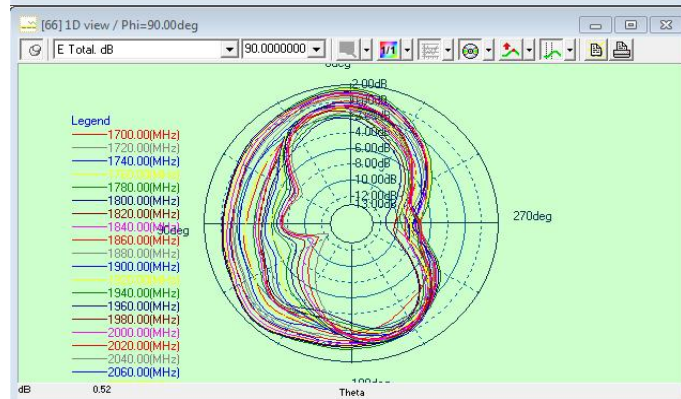
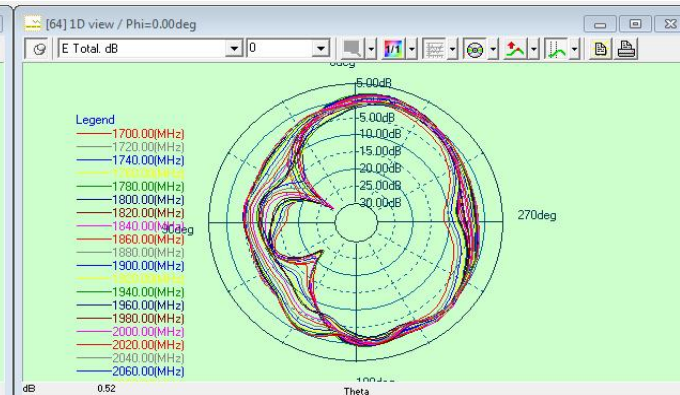
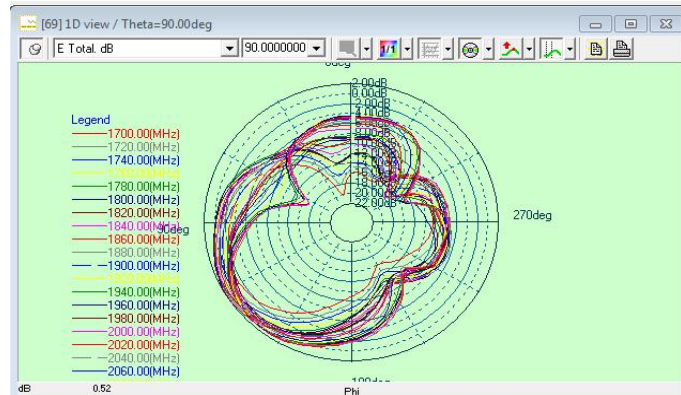




Test data

LTE antenna passive data - Efficiency/direction pattern/gain

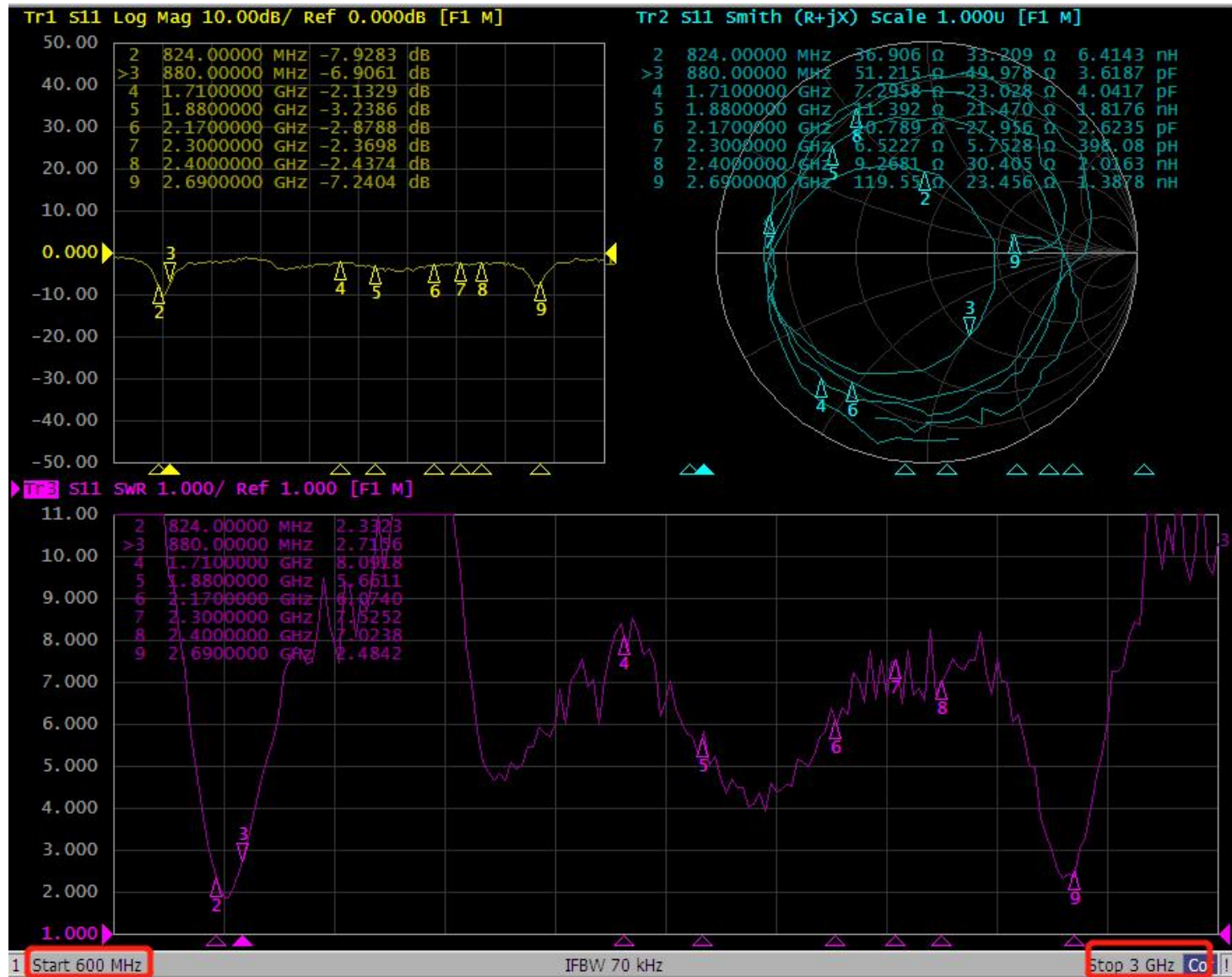
1700-2100MHZ Efficiency			2120-2200MHZ Efficiency		
Frequency	Efficiency	Gain. dBi	Frequency	Efficiency	Gain. dBi
1700MHz	31%	-0.15	2120MHz	50%	1.55
1720MHz	40%	0.75	2140MHz	49%	1.50
1740MHz	46%	1.39	2160MHz	49%	1.59
1760MHz	52%	2.01	2180MHz	49%	1.52
1780MHz	58%	2.47	2200MHz	44%	1.14
1800MHz	58%	2.56			
1820MHz	57%	2.65			
1840MHz	56%	2.42			
1860MHz	53%	1.98			
1880MHz	51%	1.69			
1900MHz	46%	1.19			
1920MHz	43%	1.04			
1940MHz	39%	0.84			
1960MHz	35%	0.54			
1980MHz	36%	0.31			
2000MHz	42%	0.69			
2020MHz	44%	0.88			
2040MHz	45%	1.14			
2060MHz	47%	1.49			
2080MHz	48%	1.56			
2100MHz	49%	1.43			





Test data

LTE Passive antenna diagram-(SWR/Log Mag/Smith)

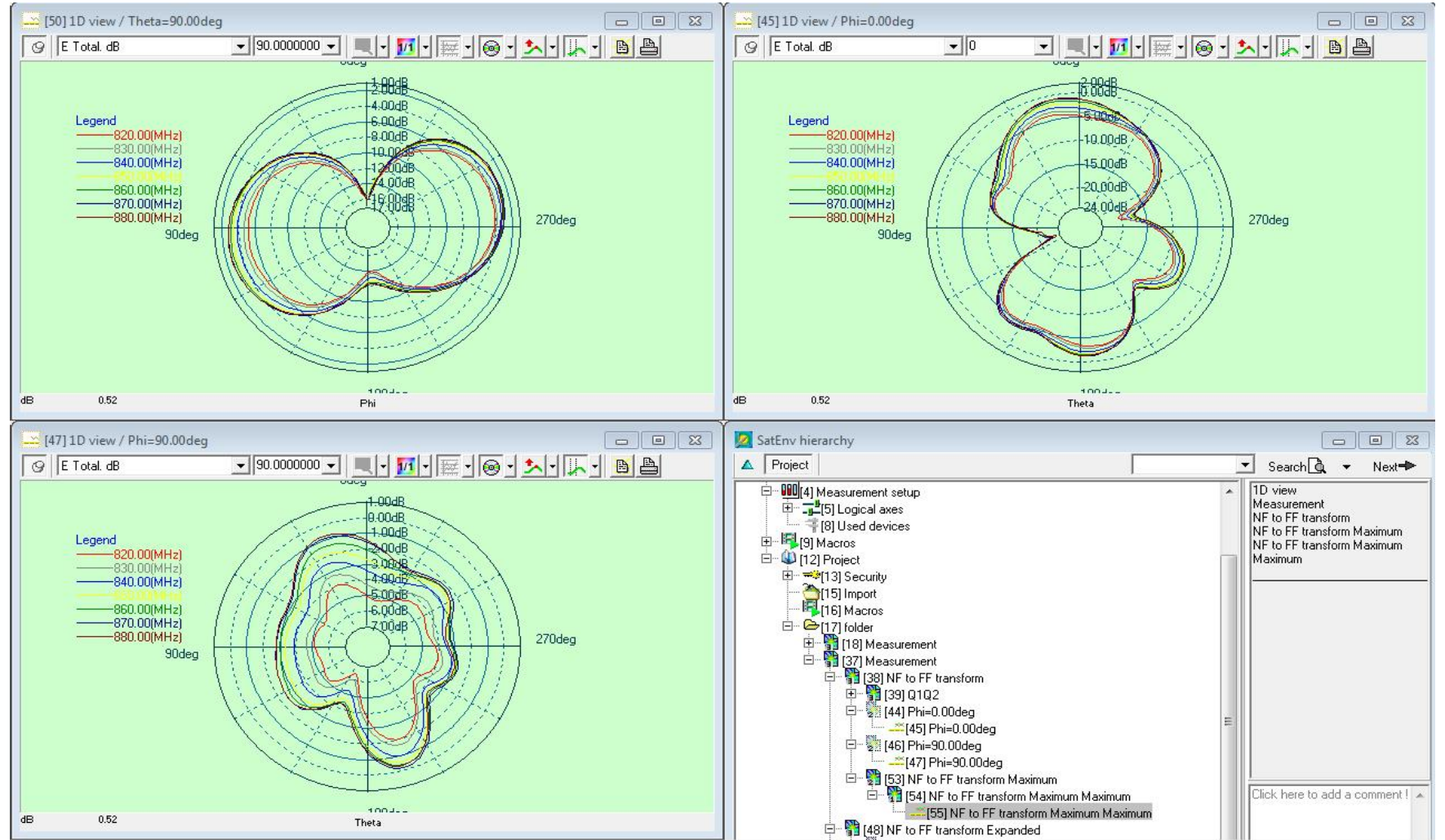




Test data

LTE antenna passive data - Efficiency/direction pattern/gain

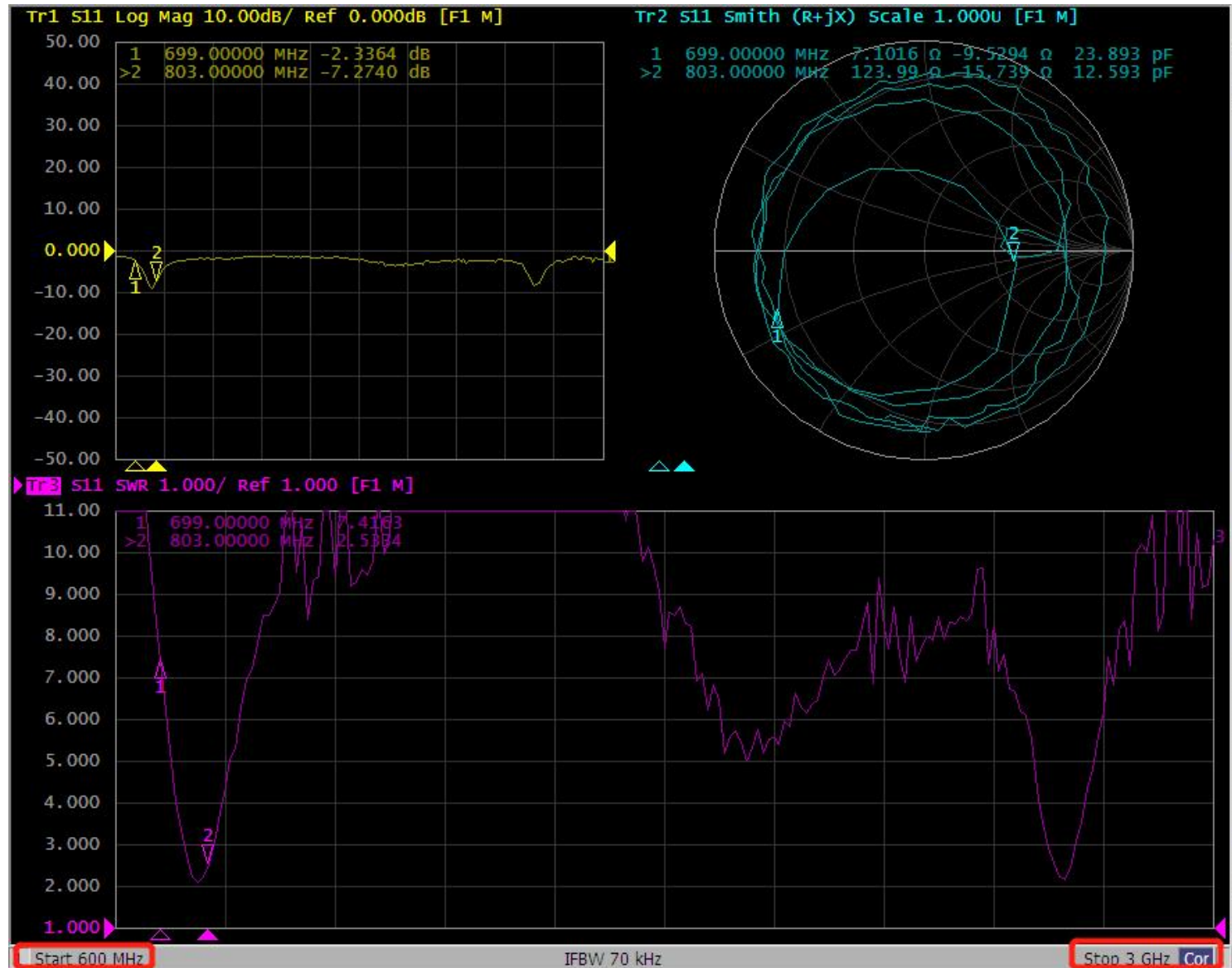
820-880MHz Efficiency		
Frequency	Efficiency	Gain. dBi
820MHz	23%	-2.04
830MHz	26%	-1.67
840MHz	30%	-0.99
850MHz	33%	-0.58
860MHz	35%	-0.35
870MHz	37%	-0.15
880MHz	37%	-0.31





Test data

LTE Passive antenna diagram-(SWR/Log Mag/Smith)

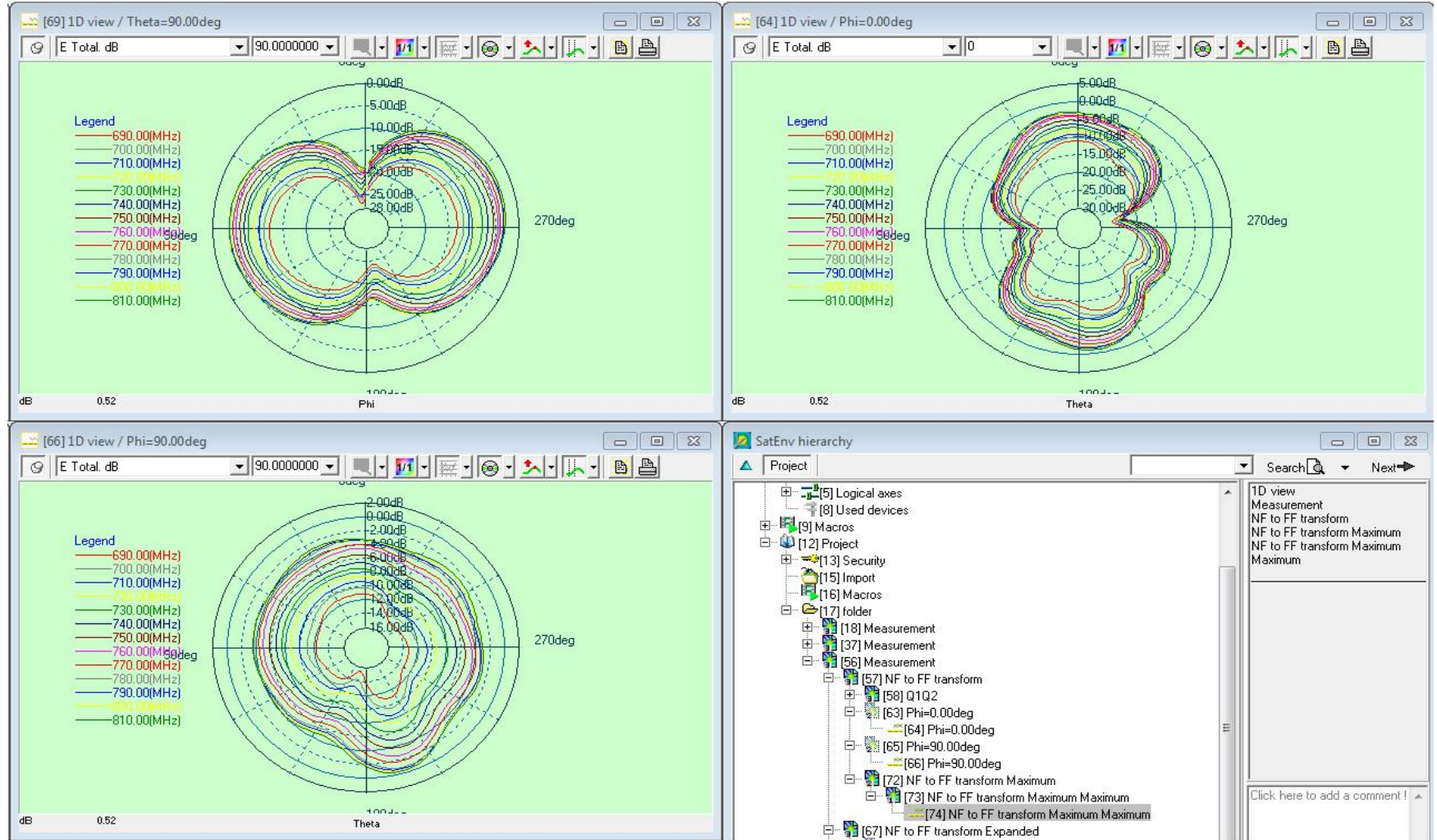




Test data

LTE antenna passive data - Efficiency/direction pattern/gain

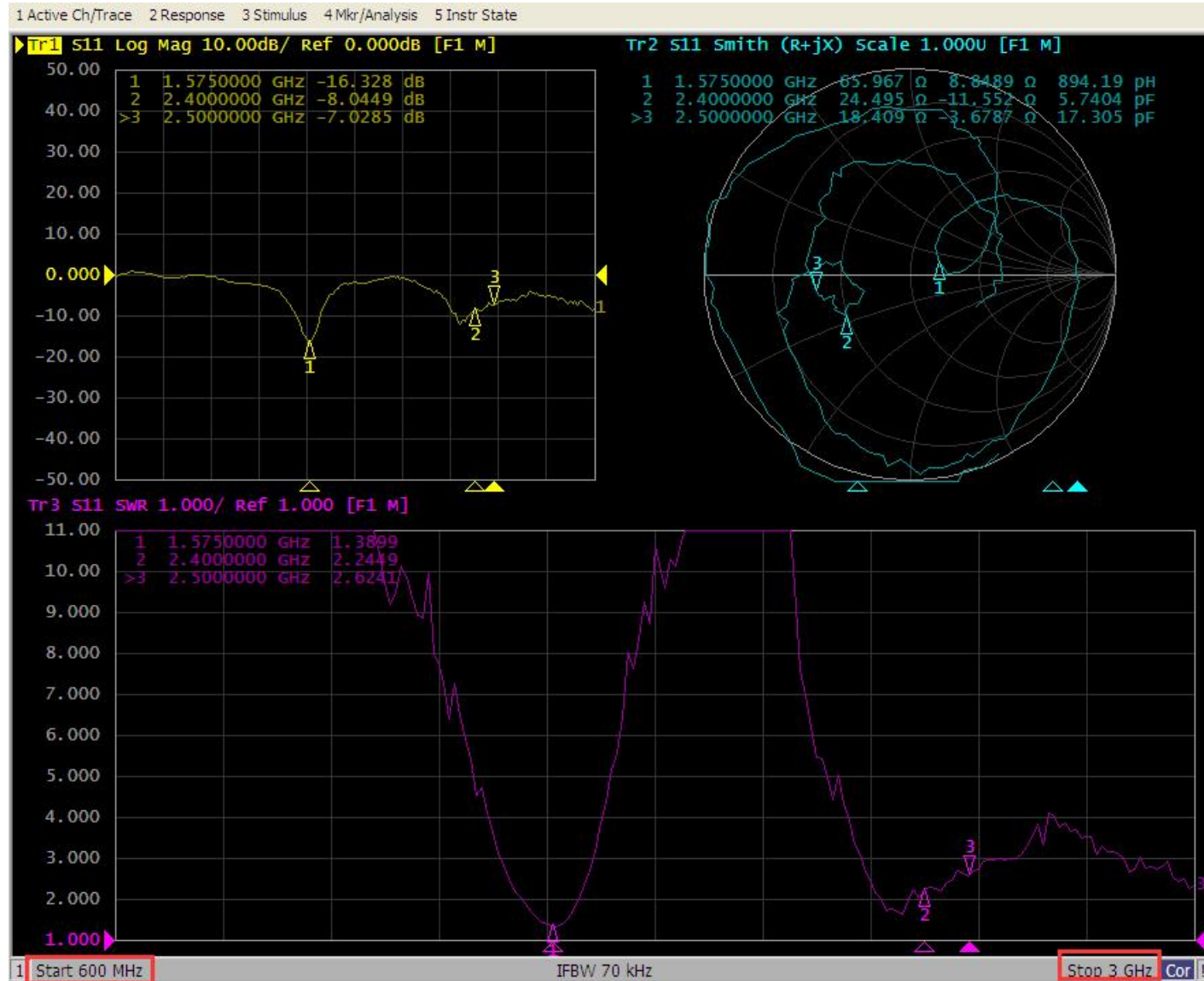
699-803MHz Efficiency		
Frequency	Efficiency	Gain. dBi
690MHz	9%	-11.04
700MHz	10%	-9.62
710MHz	11%	-8.58
720MHz	12%	-7.47
730MHz	15%	-6.22
740MHz	17%	-5.07
750MHz	21%	-3.85
760MHz	25%	-2.71
770MHz	28%	-1.86
780MHz	32%	-0.96
790MHz	34%	-0.77
800MHz	35%	-0.59
810MHz	33%	-0.47





Test data

WiFi Passive antenna diagram-SWR/Log Mag /Smith

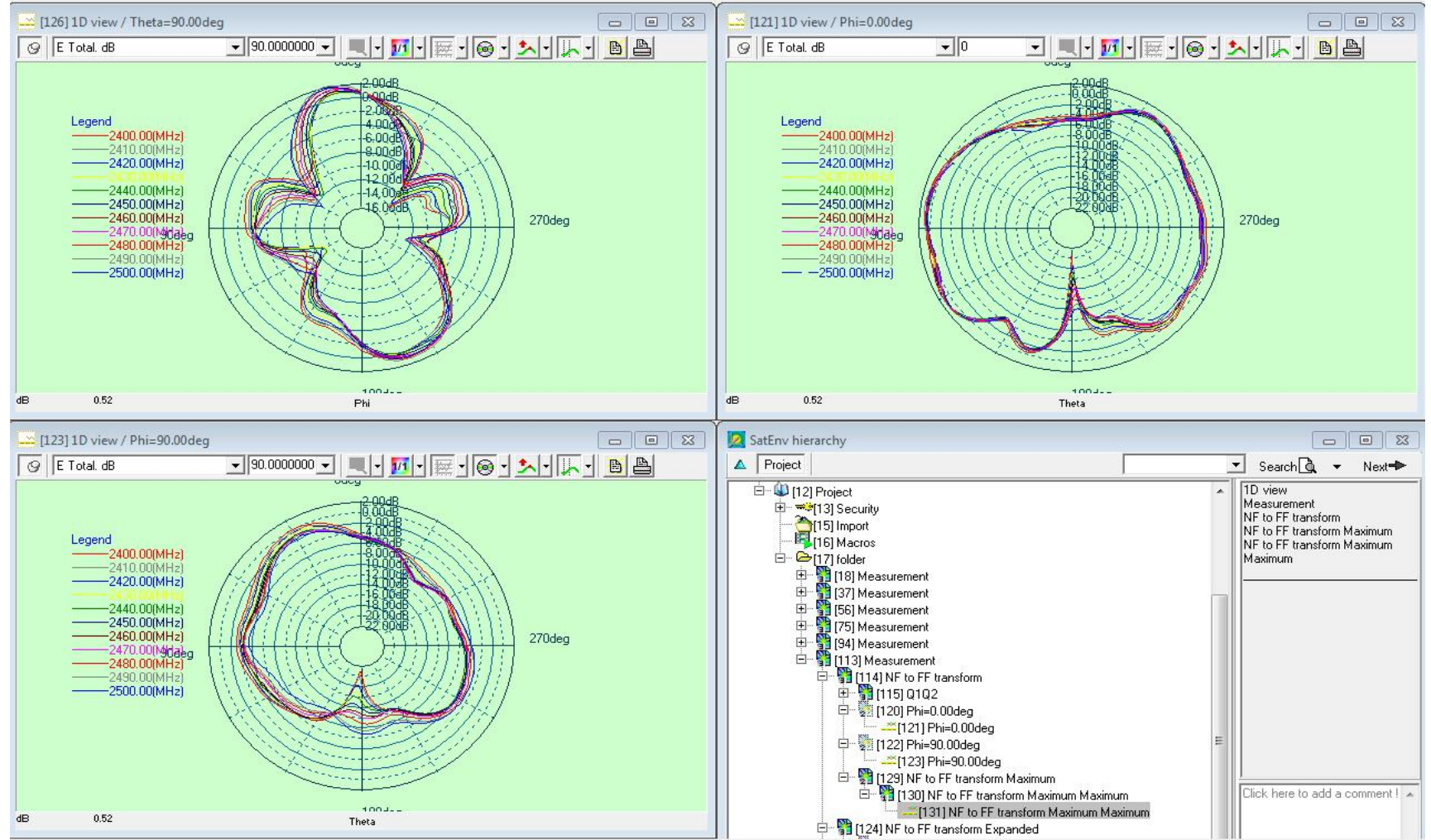




Test data

Wifi antenna passive data - Efficiency/direction pattern/gain

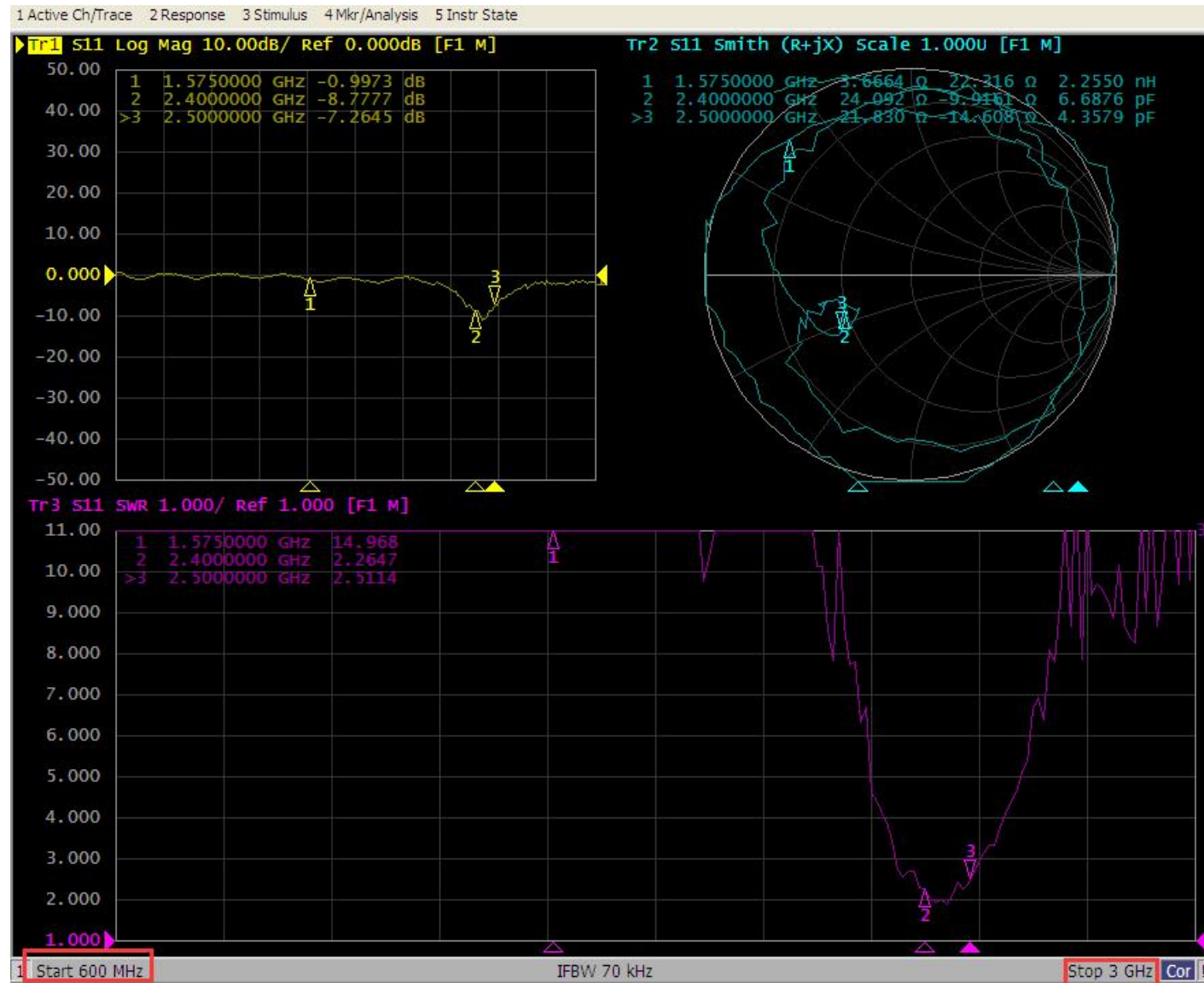
2400-2500MHz Efficiency		
Frequency	Efficiency	Gain. dBi
2400MHz	45%	1.31
2410MHz	43%	1.07
2420MHz	42%	1.09
2430MHz	41%	1.09
2440MHz	39%	0.92
2450MHz	40%	1.09
2460MHz	42%	1.40
2470MHz	41%	1.45
2480MHz	43%	1.82
2490MHz	44%	2.15
2500MHz	41%	1.90





Test data

BT Passive antenna diagram-SWR/Log Mag /Smith

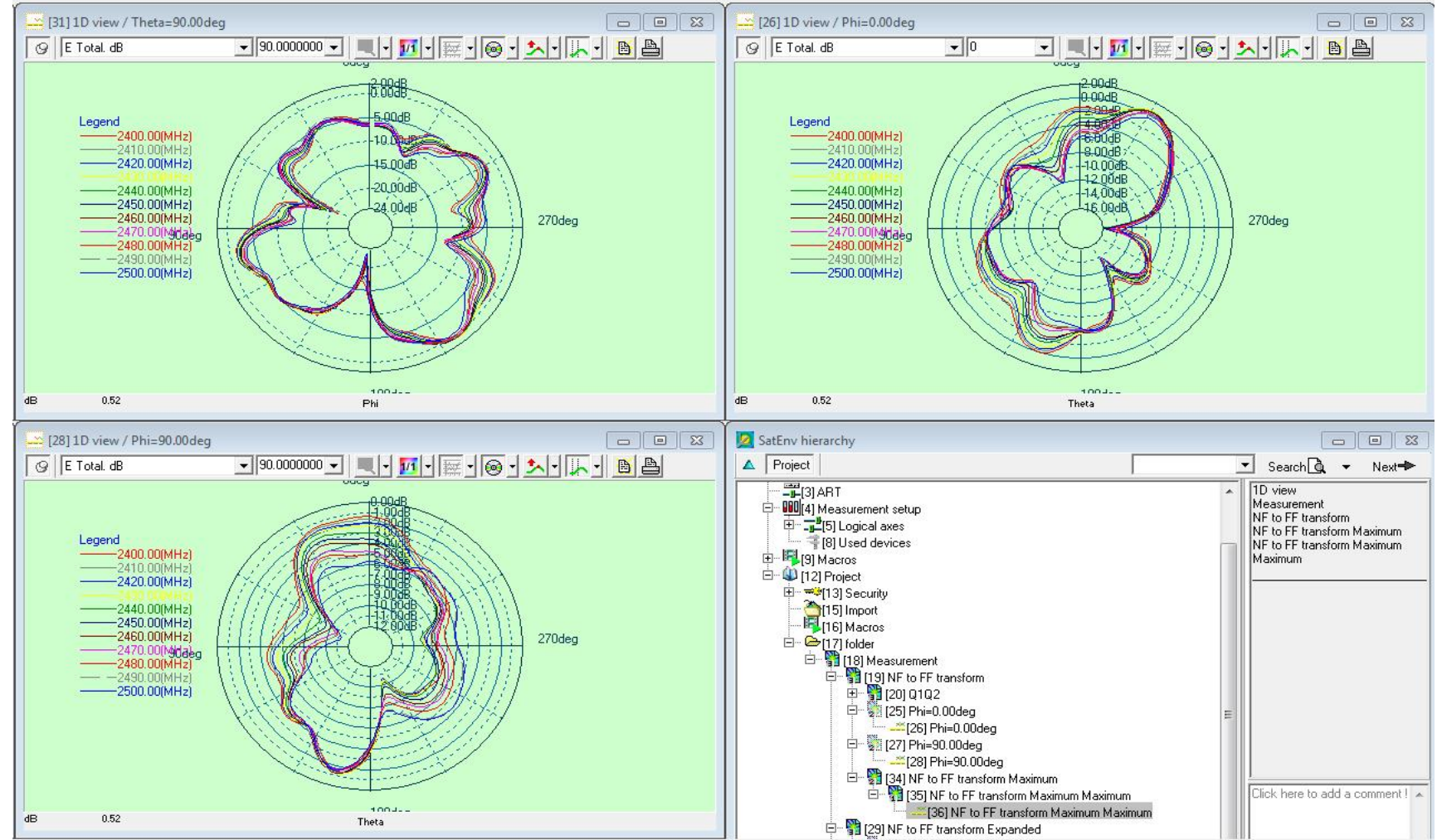




Test data

BT antenna passive data - Efficiency/direction pattern/gain

2400-2500MHZ Efficiency		
Frequency	Efficiency	Gain. dBi
2400MHz	38%	0.99
2410MHz	37%	1.03
2420MHz	37%	1.08
2430MHz	37%	1.22
2440MHz	35%	1.01
2450MHz	34%	0.89
2460MHz	34%	0.83
2470MHz	32%	0.50
2480MHz	31%	0.35
2490MHz	33%	0.35
2500MHz	29%	-0.23



THANK YOU

愿您在纷繁喧扰的世界有一颗平静的心
—拓频物联

