

**Test Plot 1#: GSM 850\_Head Flat\_Middle****DUT: Mobile Phone; Type: F450; 17090100420**

Communication System: Generic GSM; Frequency: 836.6 MHz; Duty Cycle: 1:8  
Medium parameters used:  $f = 836.6$  MHz;  $\sigma = 0.918$  S/m;  $\epsilon_r = 40.296$ ;  $\rho = 1000$  kg/m<sup>3</sup> ;  
Phantom section: Flat Section

DASY5 Configuration:

- Probe: EX3DV4 - SN7441; ConvF(10.22, 10.22, 10.22); Calibrated: 2016/11/15;
- Sensor-Surface: 1.4mm (Mechanical Surface Detection)
- Electronics: DAE4 Sn772; Calibrated: 2016/10/25
- Phantom: SAM 1; Type: QD000P40CC; Serial: TP:1412
- Measurement SW: DASY52, Version 52.8 (8);

**Area Scan (91x51x1):** Interpolated grid: dx=1.500 mm, dy=1.500 mm

Maximum value of SAR (interpolated) = 0.154 W/kg

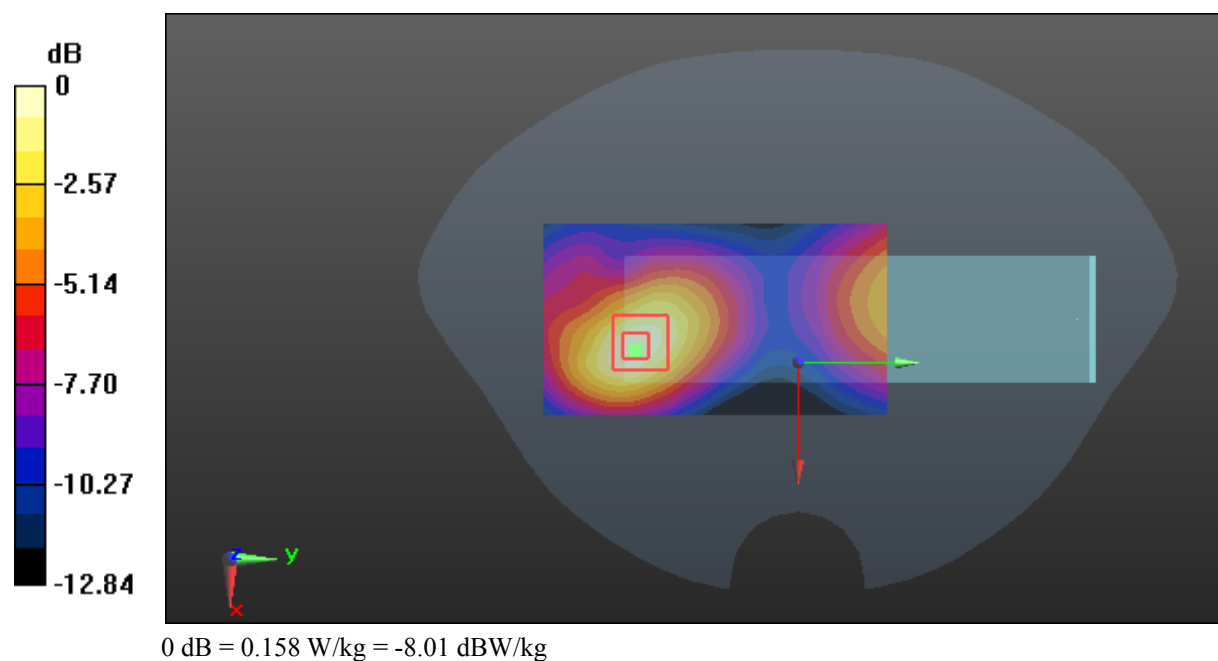
**Zoom Scan (5x5x7)/Cube 0:** Measurement grid: dx=8mm, dy=8mm, dz=5mm

Reference Value = 4.060 V/m; Power Drift = 0.03 dB

Peak SAR (extrapolated) = 0.191 W/kg

**SAR(1 g) = 0.110 W/kg; SAR(10 g) = 0.068 W/kg**

Maximum value of SAR (measured) = 0.158 W/kg



**Test Plot 2#: GSM 850\_Body Worn Back\_Middle****DUT: Mobile Phone; Type: F450; 17090100420**

Communication System: Generic GSM; Frequency: 836.6 MHz; Duty Cycle: 1:8  
Medium parameters used:  $f = 836.6$  MHz;  $\sigma = 1.007$  S/m;  $\epsilon_r = 54.233$ ;  $\rho = 1000$  kg/m<sup>3</sup> ;  
Phantom section: Right Section

## DASY5 Configuration:

- Probe: EX3DV4 - SN7441; ConvF(9.85, 9.85, 9.85); Calibrated: 2016/11/15;
- Sensor-Surface: 1.4mm (Mechanical Surface Detection)
- Electronics: DAE4 Sn772; Calibrated: 2016/10/25
- Phantom: Triple Flat Phantom 5.1C; Type: QD 000 P51 CA; Serial: 1130
- Measurement SW: DASY52, Version 52.8 (8);

**Area Scan (51x91x1):** Interpolated grid: dx=1.500 mm, dy=1.500 mm

Maximum value of SAR (interpolated) = 1.05 W/kg

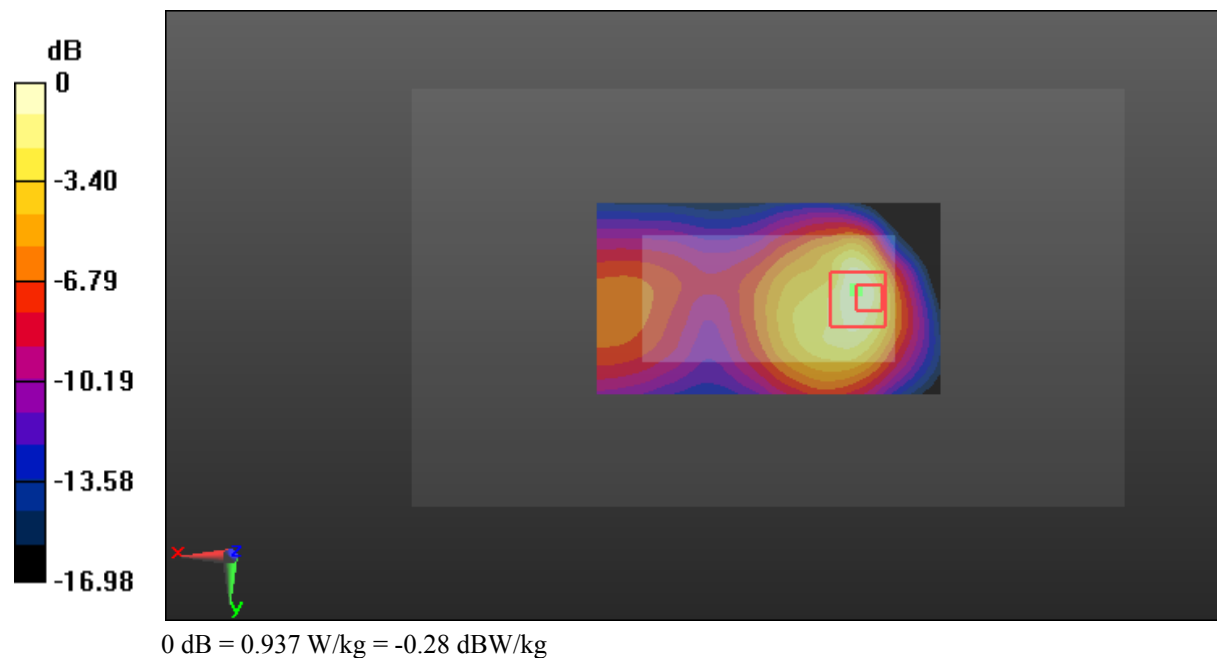
**Zoom Scan (5x5x7)/Cube 0:** Measurement grid: dx=8mm, dy=8mm, dz=5mm

Reference Value = 15.02 V/m; Power Drift = 0.09 dB

Peak SAR (extrapolated) = 1.30 W/kg

**SAR(1 g) = 0.540 W/kg; SAR(10 g) = 0.281 W/kg**

Maximum value of SAR (measured) = 0.937 W/kg



**Test Plot 3#: GSM 850\_Body Back\_Middle****DUT: Mobile Phone; Type: F450; 17090100420**

Communication System: Generic GPRS-3 slots; Frequency: 836.6 MHz; Duty Cycle: 1:2.66  
Medium parameters used:  $f = 836.6$  MHz;  $\sigma = 1.007$  S/m;  $\epsilon_r = 54.233$ ;  $\rho = 1000$  kg/m<sup>3</sup> ;  
Phantom section: Right Section

DASY5 Configuration:

- Probe: EX3DV4 - SN7441; ConvF(9.85, 9.85, 9.85); Calibrated: 2016/11/15;
- Sensor-Surface: 1.4mm (Mechanical Surface Detection)
- Electronics: DAE4 Sn772; Calibrated: 2016/10/25
- Phantom: Triple Flat Phantom 5.1C; Type: QD 000 P51 CA; Serial: 1130
- Measurement SW: DASY52, Version 52.8 (8);

**Area Scan (51x91x1):** Interpolated grid: dx=1.500 mm, dy=1.500 mm

Maximum value of SAR (interpolated) = 1.35 W/kg

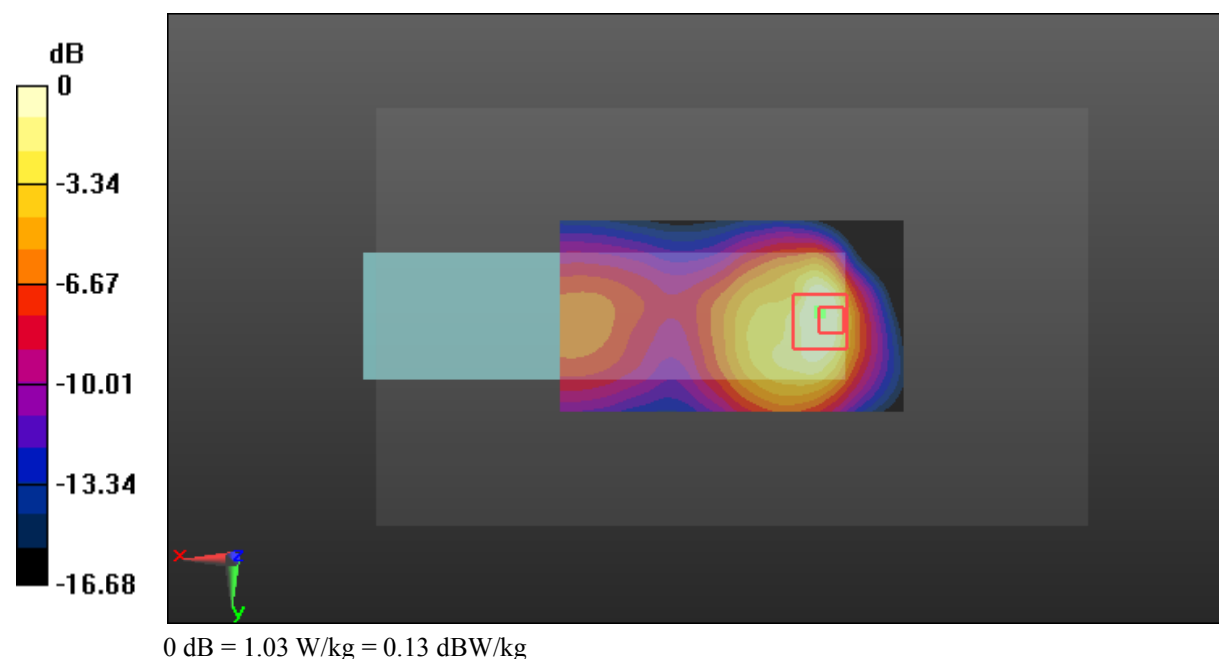
**Zoom Scan (5x5x7)/Cube 0:** Measurement grid: dx=8mm, dy=8mm, dz=5mm

Reference Value = 16.93 V/m; Power Drift = -0.10 dB

Peak SAR (extrapolated) = 1.55 W/kg

**SAR(1 g) = 0.642 W/kg; SAR(10 g) = 0.334 W/kg**

Maximum value of SAR (measured) = 1.03 W/kg



**Test Plot 4#: GSM 1900\_Head Flat\_Middle****DUT: Mobile Phone; Type: F450; 17090100420**

Communication System: Generic GSM; Frequency: 1880 MHz; Duty Cycle: 1:8  
Medium parameters used:  $f = 1880$  MHz;  $\sigma = 1.43$  S/m;  $\epsilon_r = 38.548$ ;  $\rho = 1000$  kg/m<sup>3</sup> ;  
Phantom section: Flat Section

DASY5 Configuration:

- Probe: EX3DV4 - SN7441; ConvF(8.48, 8.48, 8.48); Calibrated: 2016/11/15;
- Sensor-Surface: 1.4mm (Mechanical Surface Detection)
- Electronics: DAE4 Sn772; Calibrated: 2016/10/25
- Phantom: SAM 1; Type: QD000P40CC; Serial: TP:1412
- Measurement SW: DASY52, Version 52.8 (8);

**Area Scan (91x51x1):** Interpolated grid: dx=1.500 mm, dy=1.500 mm

Maximum value of SAR (interpolated) = 0.191 W/kg

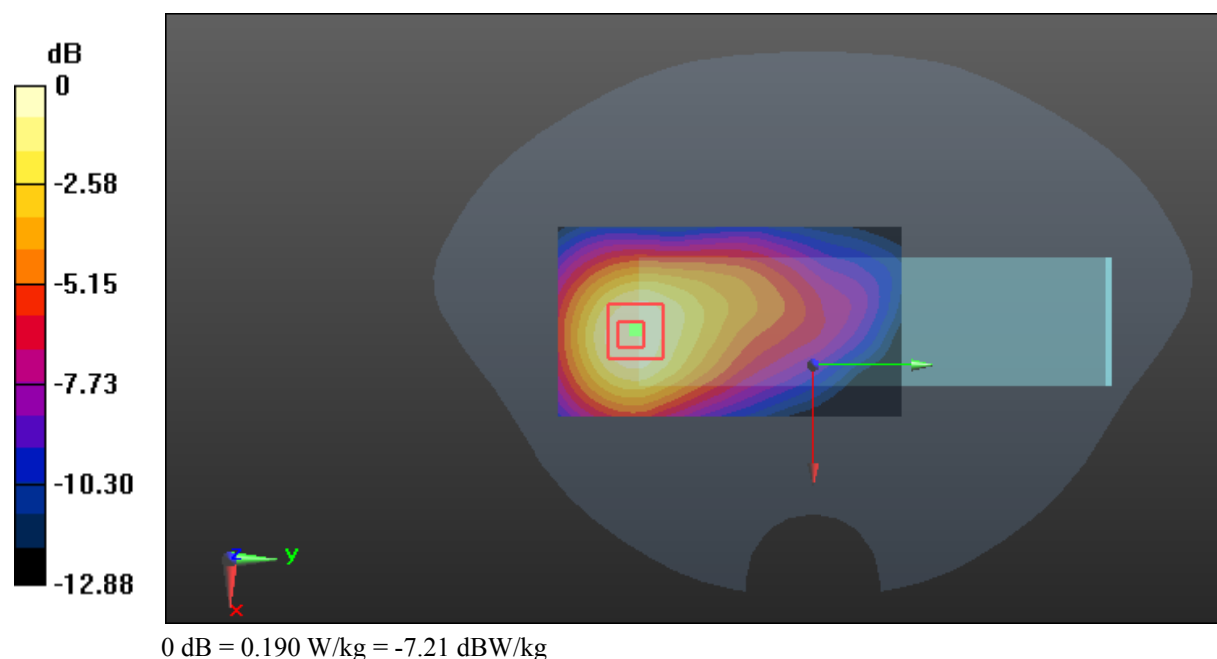
**Zoom Scan (5x5x7)/Cube 0:** Measurement grid: dx=8mm, dy=8mm, dz=5mm

Reference Value = 4.831 V/m; Power Drift = 0.12 dB

Peak SAR (extrapolated) = 0.227 W/kg

**SAR(1 g) = 0.136 W/kg; SAR(10 g) = 0.083 W/kg**

Maximum value of SAR (measured) = 0.190 W/kg



**Test Plot 5#: GSM 1900\_Body Worn Back\_Middle****DUT: Mobile Phone; Type: F450; 17090100420**

Communication System: Generic GSM; Frequency: 1880 MHz; Duty Cycle: 1:8  
Medium parameters used:  $f = 1880$  MHz;  $\sigma = 1.551$  S/m;  $\epsilon_r = 51.607$ ;  $\rho = 1000$  kg/m<sup>3</sup> ;  
Phantom section: Left Section

## DASY5 Configuration:

- Probe: EX3DV4 - SN7441; ConvF(7.95, 7.95, 7.95); Calibrated: 2016/11/15;
- Sensor-Surface: 1.4mm (Mechanical Surface Detection)
- Electronics: DAE4 Sn772; Calibrated: 2016/10/25
- Phantom: Triple Flat Phantom 5.1C; Type: QD 000 P51 CA; Serial: 1130
- Measurement SW: DASY52, Version 52.8 (8);

**Area Scan (51x91x1):** Interpolated grid: dx=1.500 mm, dy=1.500 mm

Maximum value of SAR (interpolated) = 0.572 W/kg

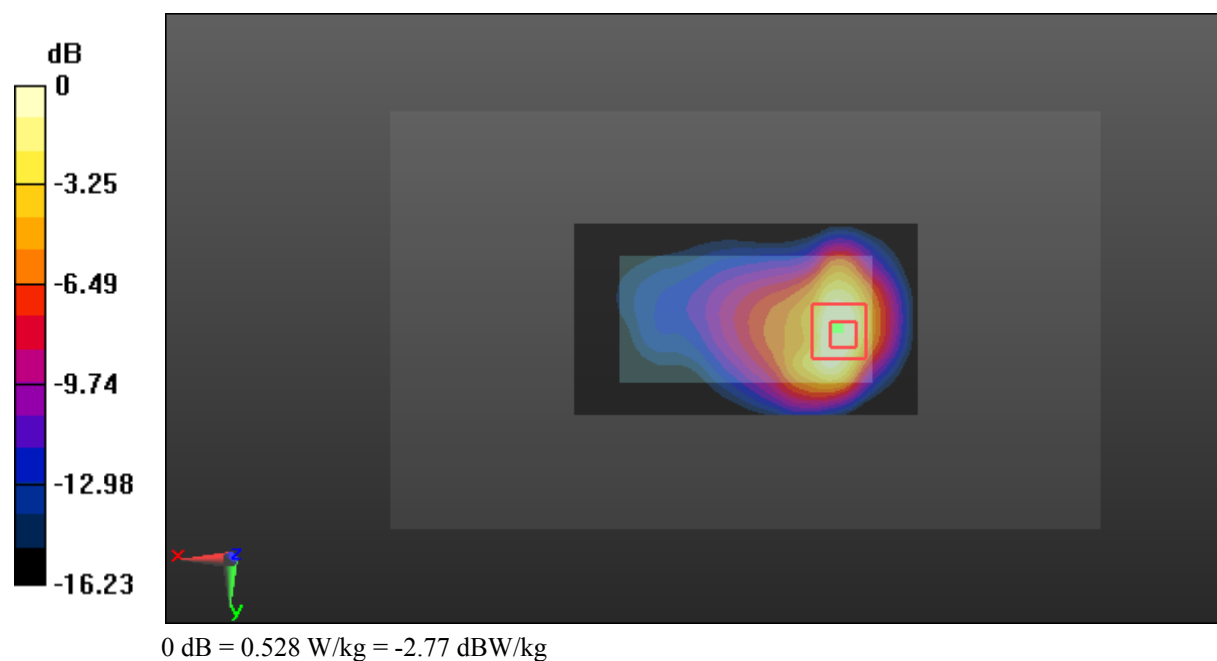
**Zoom Scan (5x5x7)/Cube 0:** Measurement grid: dx=8mm, dy=8mm, dz=5mm

Reference Value = 6.326 V/m; Power Drift = 0.11 dB

Peak SAR (extrapolated) = 0.659 W/kg

**SAR(1 g) = 0.340 W/kg; SAR(10 g) = 0.175 W/kg**

Maximum value of SAR (measured) = 0.528 W/kg



**Test Plot 6#: GSM 1900\_Body Back\_Middle****DUT: Mobile Phone; Type: F450; 17090100420**

Communication System: Generic GPRS-3 slots; Frequency: 1880 MHz; Duty Cycle: 1:2.66  
Medium parameters used:  $f = 1880$  MHz;  $\sigma = 1.551$  S/m;  $\epsilon_r = 51.607$ ;  $\rho = 1000$  kg/m<sup>3</sup> ;  
Phantom section: Left Section

DASY5 Configuration:

- Probe: EX3DV4 - SN7441; ConvF(7.95, 7.95, 7.95); Calibrated: 2016/11/15;
- Sensor-Surface: 1.4mm (Mechanical Surface Detection)
- Electronics: DAE4 Sn772; Calibrated: 2016/10/25
- Phantom: Triple Flat Phantom 5.1C; Type: QD 000 P51 CA; Serial: 1130
- Measurement SW: DASY52, Version 52.8 (8);

**Area Scan (51x91x1):** Interpolated grid: dx=1.500 mm, dy=1.500 mm

Maximum value of SAR (interpolated) = 0.725 W/kg

**Zoom Scan (5x5x7)/Cube 0:** Measurement grid: dx=8mm, dy=8mm, dz=5mm

Reference Value = 7.423 V/m; Power Drift = 0.10 dB

Peak SAR (extrapolated) = 0.854 W/kg

**SAR(1 g) = 0.437 W/kg; SAR(10 g) = 0.226 W/kg**

Maximum value of SAR (measured) = 0.646 W/kg

