

**New Zealand**

Invenco Group LTD  
111 Frankin Road  
PO Box 68281, Ponsonby  
Auckland 1145, New Zealand  
TEL +64 9 369 2935  
FAX +64 9 369 1708

**[www.invenco.com](http://www.invenco.com)**

# Invenco G6 OPT Internal Photographs

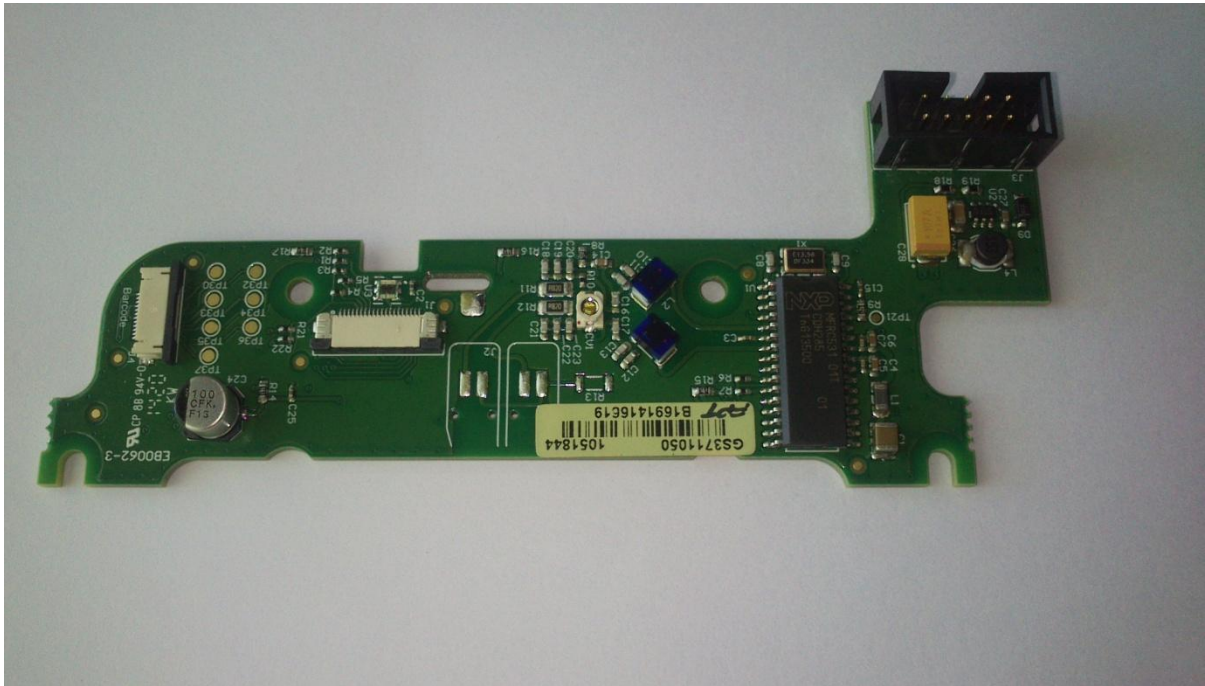
---



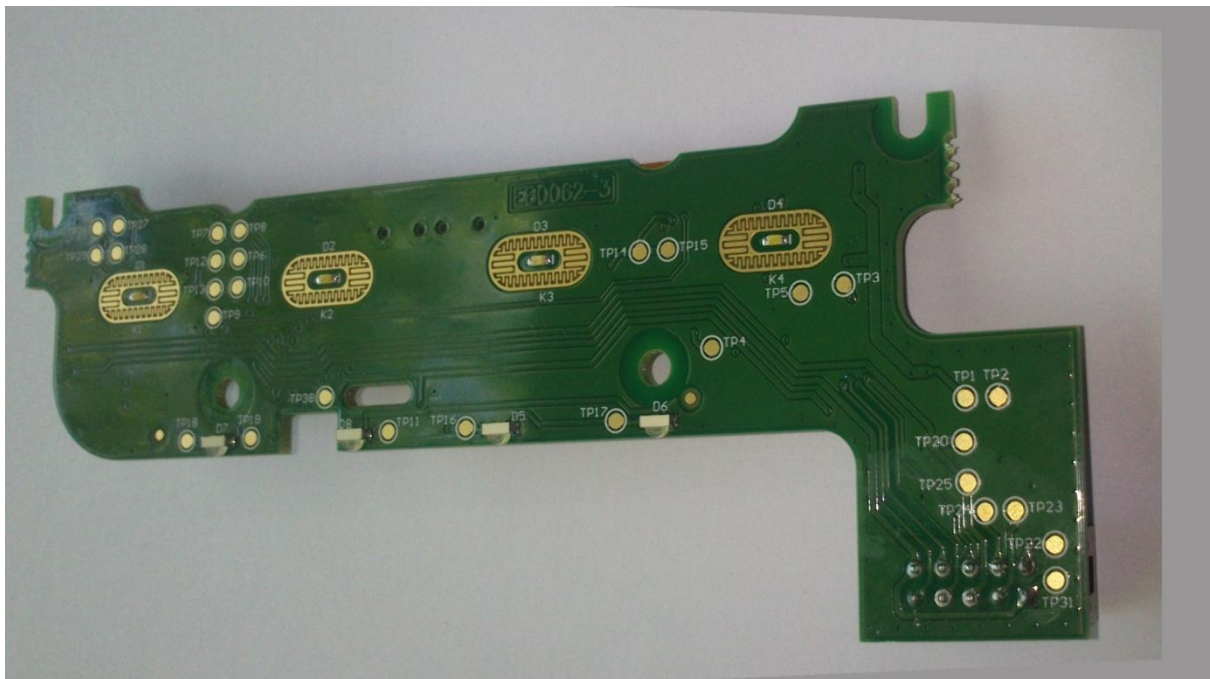
Bezel removed showing Contactless Circuit Antenna (Bezel up- Normal position).



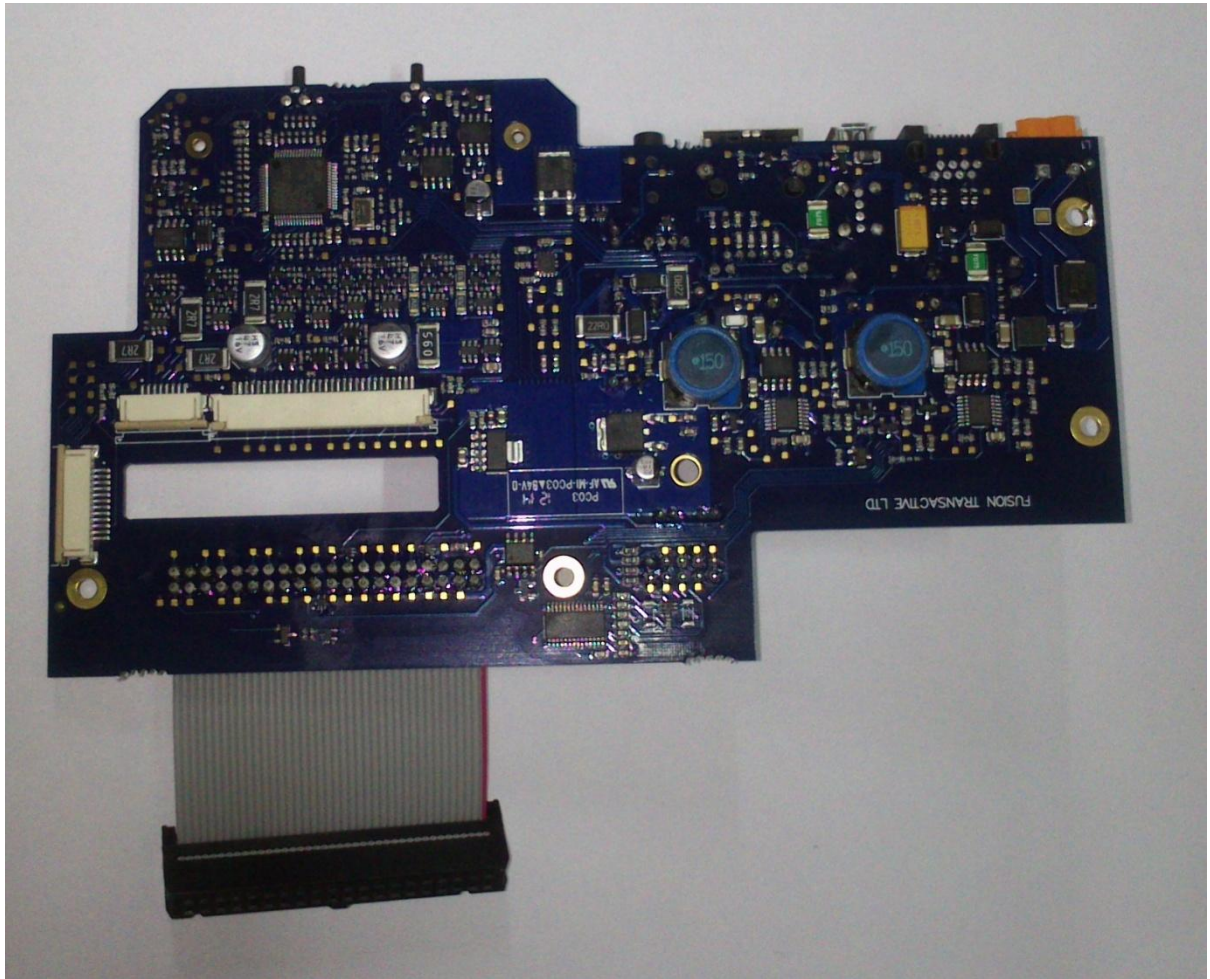
Bezel removed close up on rear side showing the contactless circuit antenna and antenna tail connection points that go to the circuit board.



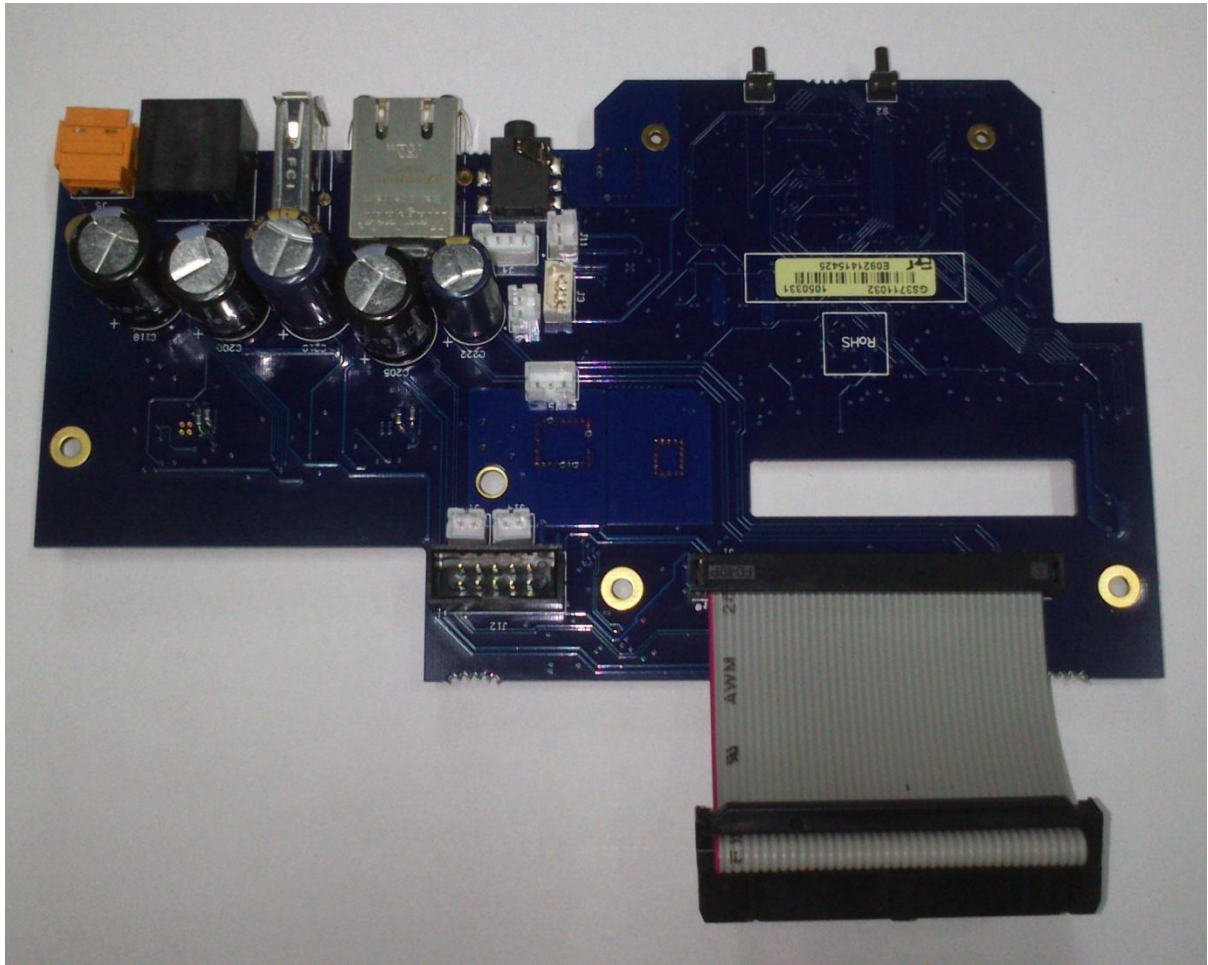
Contactless transceiver circuit board showing components from the top



Contactless transceiver circuit board showing components from underneath.



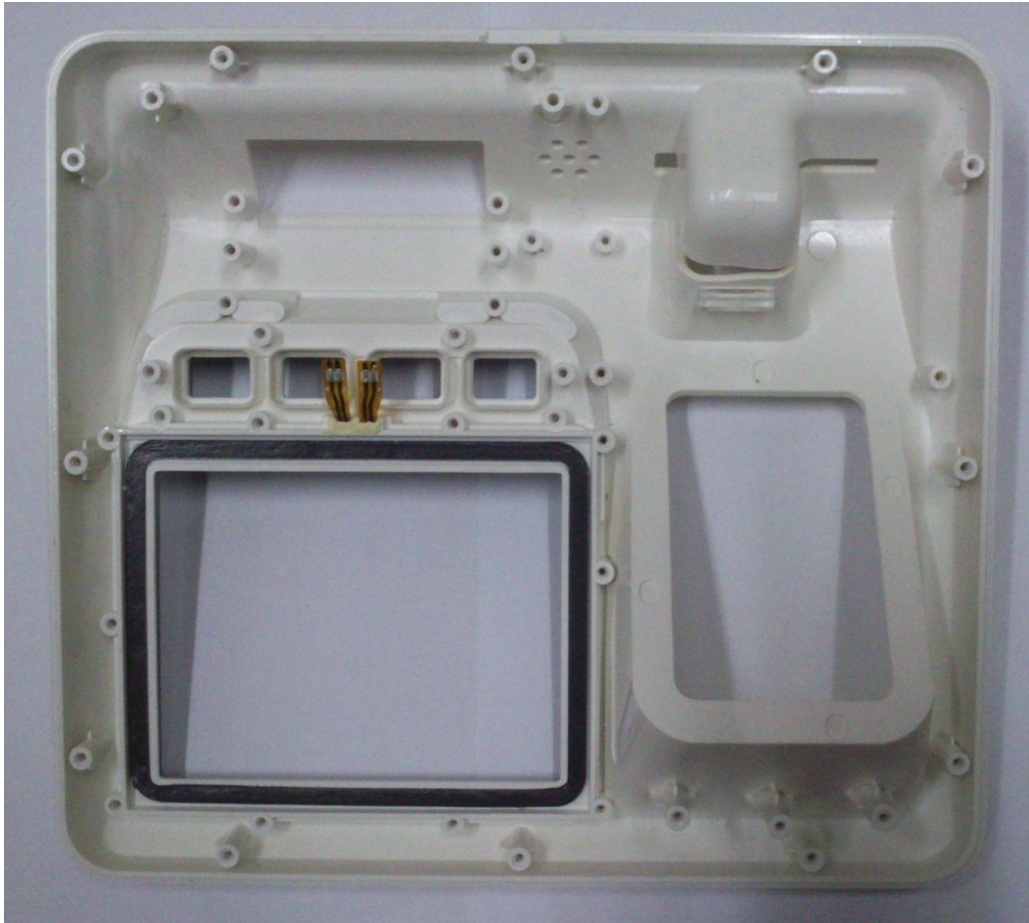
Power Module from the top



Power module from underneath



Front housing from the front with bezel and antenna in place  
(Antenna connector tail can just be seen behind the bezel.)

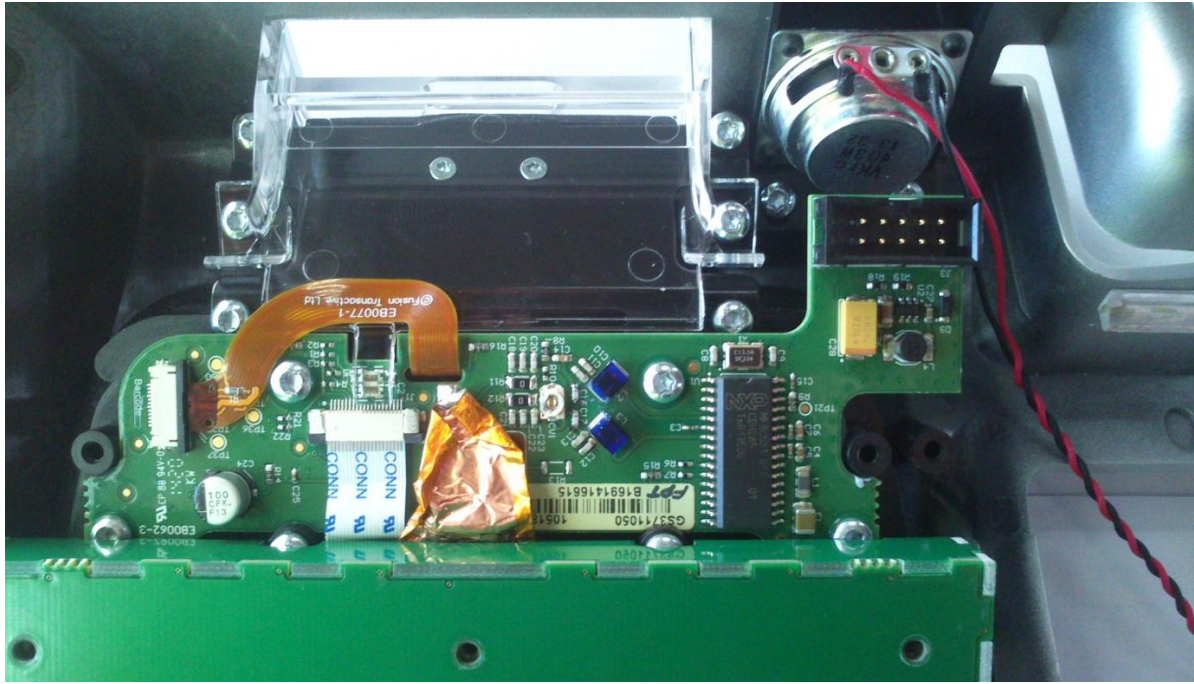


Front housing from inside showing how the antenna tails pass through to the circuit board.

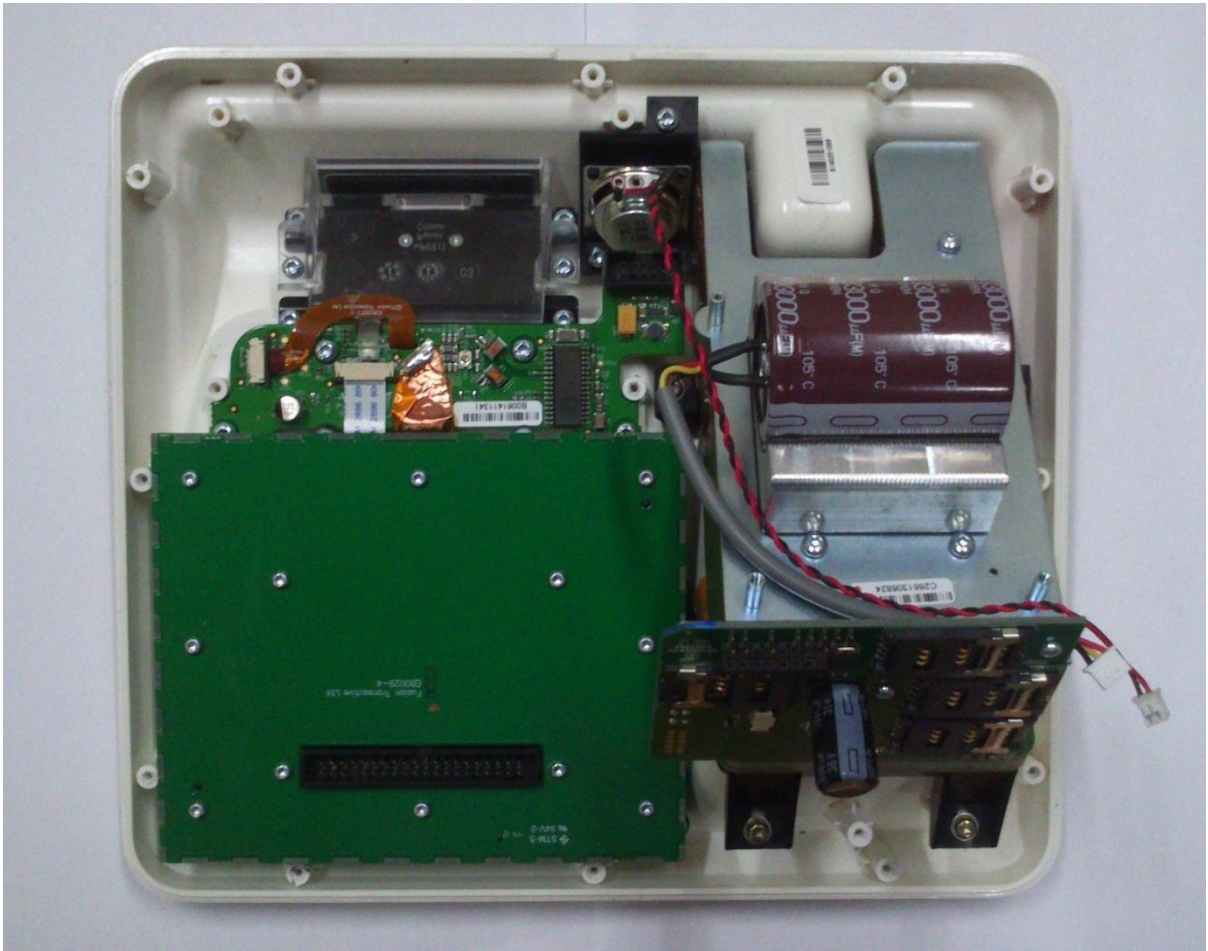


Contactless circuit board with the antenna tails connected

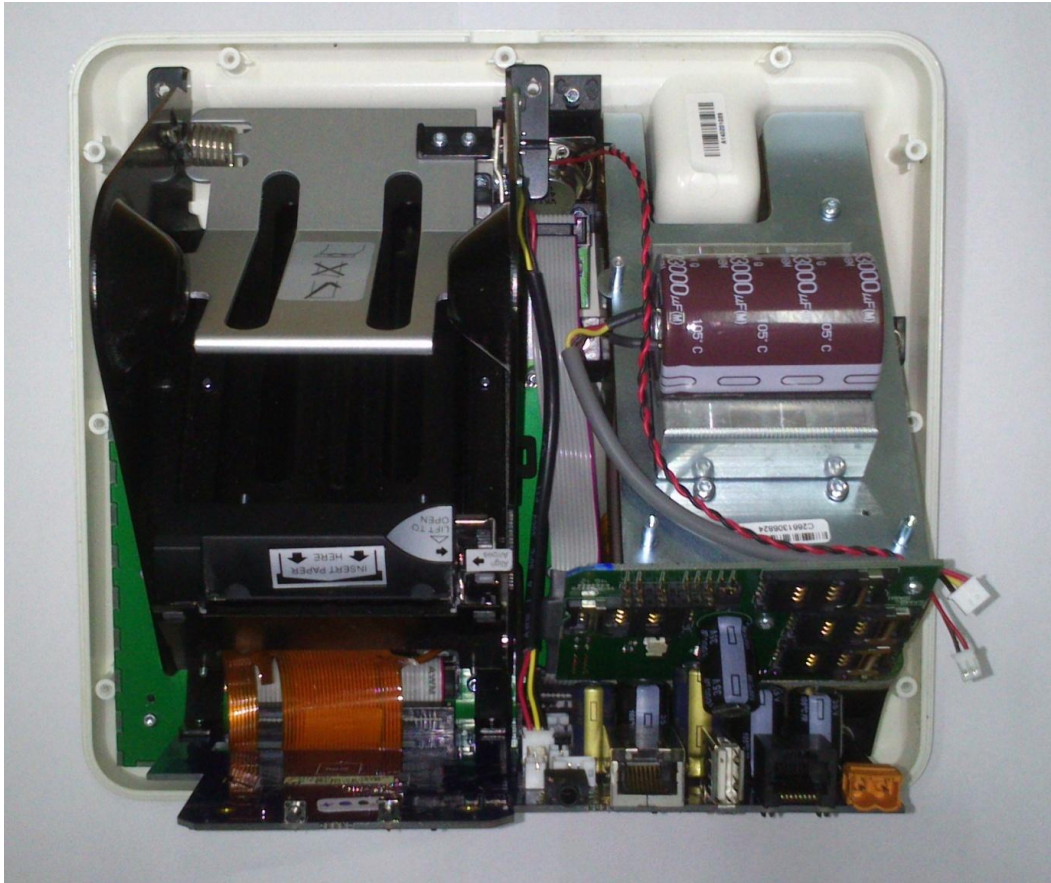




Contactless circuit board with the white FFC connection to the serial port interface on the Secure Display Module. The Flexible Printed Circuit connection to the barcode reader interface and the copper foil LCD Grounding tape that is applied.  
(This covers the antenna tails in this picture)



Picture with secure display module attached.



Completed electronic assembly with rear case off, power board can be seen in the lower part of this picture.

Internal Photos (Limited range of photos for report purposes only)

