



# User Manual

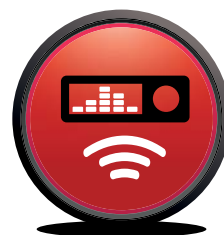
**SOUND SIMULATOR**



**USB CHARGER**



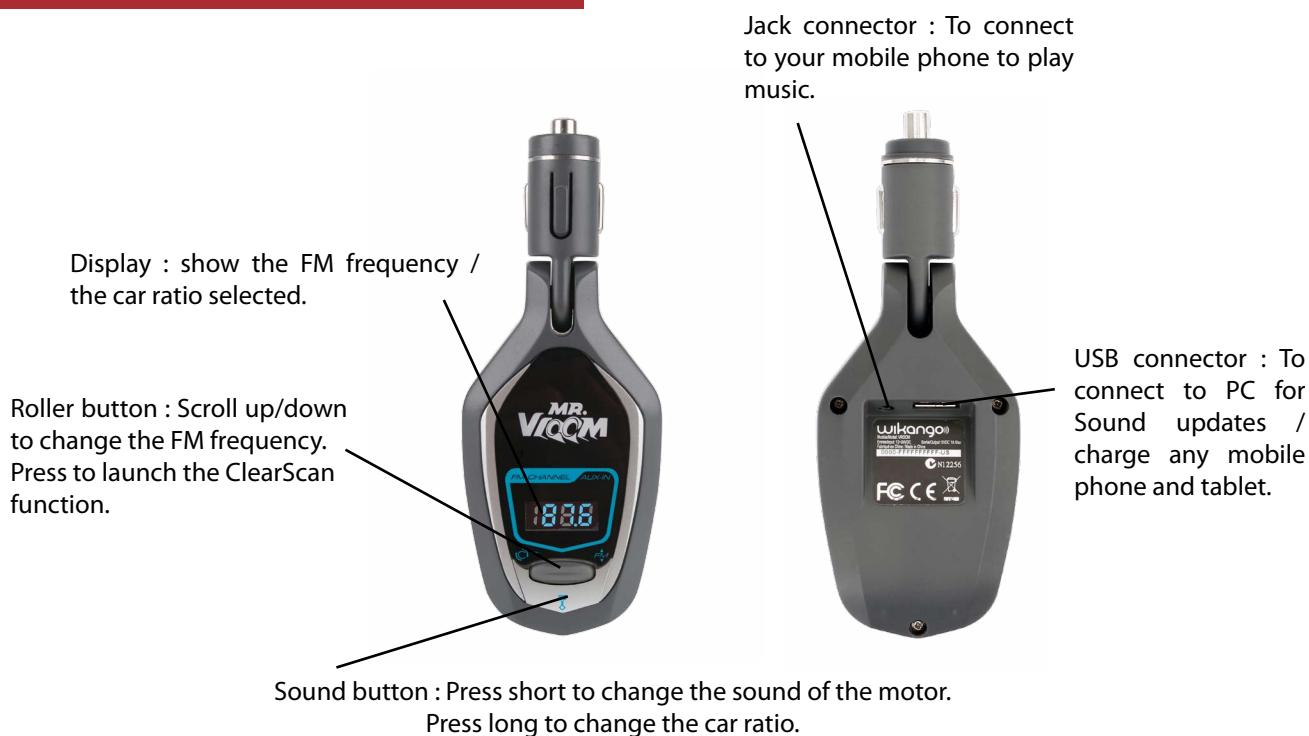
**FM TRANSMITTER**



**Thank you for buying the Mr. Vroom, the first car sound simulator with  
FM transmitter and charger functions**

# ENGINE SOUND SIMULATOR

## Functions



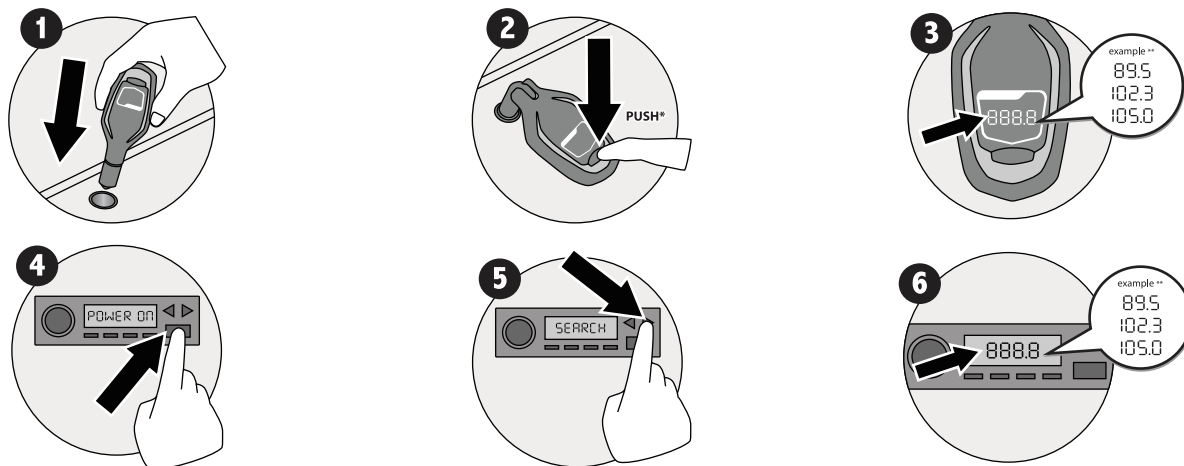
## Connect to your car radio

First, insert Mr. Vroom into the 12V or 24V car lighter plug on your car, and press on the roller button to activate the ClearScan function. The ClearScan will select a clear FM frequency for the Mr. Vroom to transmit. The frequency is shown on the Mr. Vroom display.

On your car radio, select the same frequency as the Mr. Vroom by using the auto or manual channel scan.

You can now hear the sound simulation! If you hear some noises, you can use the clear scan function on Mr.Vroom again and tune the car radio to the new frequency.

You can also scroll up/down the roller to change manually the Fm frequency.

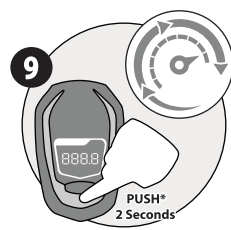
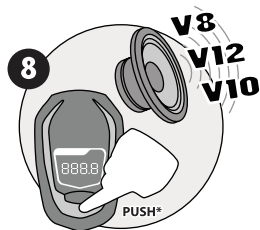
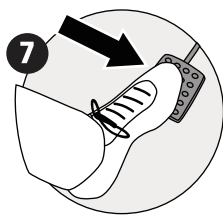


# ENGINE SOUND SIMULATOR

## Play with the car simulator

Different cars have different RPM range and people have different driving style. In order to keep a realistic sound simulation, we have 3 different modes to match with your car. Press long the Sound button until you hear a bip, the Mr. Vroom will show on the display :

C	N	U
City mode	Normal mode	Race mode
If you don't go too high on RPM.	Follow your engine RPM.	For some specific car or on race track conditions.



You can also change the car sound by pressing short the Sound button  
We suggest testing each mode and selecting the one that suits you most.

Note : the program needs about 10 seconds to synchronize with your engine, so performance will be optimal after this period.

## Play some music

You can connect your mobile phone or any music player to the Jack cable included with Mr. Vroom. Connect to the Jack input of Mr. Vroom and it will play instantly the music.



## Charge your phone/tablet

You can charge any phone or tablet by connecting the cable (not included) on the USB connector of Mr. Vroom.





# ENGINE SOUND SIMULATOR

## Change the car sound simulation

You need to connect Mr. Vroom to your Mac or PC thanks to the USB cable included.  
Save on your Mac/PC the sound files stored into Mr. Vroom as there is a maximum of 2 sound files into Mr. Vroom.

Go to [www.mrvroom](http://www.mrvroom) website and follow the instructions to get new car sound simulations.

Technical specifications	
Input	DC 12-24V 
Consumption	0.7A
Max output on USB	5V  1A
Radio frequency range	
US	88.2MHz - 107.8MHz
Europe	87.6MHz - 107.9MHz
Radio frequency adjustment increment	
US	0.2MHz
Europe	0.1MHz
Operating / Storage temperature	-10°C to 60°C

## Waste Electrical and Electronic Equipment Directive

According to Directive 2002/96/EC on Waste Electrical and Electronic Equipment, household electrical appliances cannot be dispersed in the conventional waste stream. Used electrical and electronic equipments must be collected.

- While installing the device, make sure that it cannot be dangerous to the occupants of the vehicle, particularly in case of projection.
- Keep the unit and the cigar-plug away from water.
- If the unit or the cigar-plug falls in the water, don't touch the unit before you have disconnected the cigar-plug from the cigar socket of your vehicle, and remove the unit using the cable.
- Read this manual and all safety warnings carefully before you use or install this unit.
- If your vehicle is parked in the sun, let the unit cool down before you use it.
- Clean-up instructions: don't use solvents. Clean regularly.
- Don't let liquids or objects enter the housing through the ventilation holes. They may damage the internal parts of the unit and cause an electric shock, a short-cut or a fire.
- Do not try to repair and disassemble the unit by yourself. This may cause an electric shock. Please contact a qualified technician.
- Disconnect the unit when it's not in use. To protect this unit in case of a storm or when it's not used during a long time, disconnect it from the network.
- Keep away from naked flames (like candles).
- Use in temperate areas.
- A minimum space of 2 inches should be maintained around the unit for its ventilation.

# ENGINE SOUND SIMULATOR

## Important Safety advice

Changes or modifications not expressly approved by the party responsible for compliance could void the user's authority to operate the equipment.

This equipment has been tested and found to comply with the limits for a Class B digital device, pursuant to Part 15 of the FCC Rules. These limits are designed to provide reasonable protection against harmful interference in a residential installation. This equipment generates, uses and can radiate radio frequency energy and, if not installed and used in accordance with the instructions, may cause harmful interference to radio communications. However, there is no guarantee that interference will not occur in a particular installation.

If this equipment does cause harmful interference to radio or television reception, which can be determined by turning the equipment off and on, the user is encouraged to try to correct the interference by one or more of the following measures:

- Reorient or relocate the receiving antenna.
- Increase the separation between the equipment and receiver.
- Connect the equipment into an outlet on a circuit different from that to which the receiver is connected.
- Consult the dealer or an experienced radio/TV technician for help.

The power supply used with your device must correspond to its original requirements.

Only use the accessories and connectors supplied. The use of any other type of accessory not originally designed for the purpose may cause irreparable damage to your device.

This device complies with Part 15 of the FCC Rules. Operation is subject to the following two conditions :

1. This device may not cause harmful interference, and
  2. This device must accept any interference received, including interference that may cause undesired operation.
- The manufacturer is not responsible for any radio or tv interference caused by unauthorized modifications to this equipment. Such modifications could void the user's authority to operate the equipment.

We hereby declare that Mr. Vroom meets the essential requirements and other relevant provisions of European Directive 1999/5/EC.



Mr. Vroom manual V1.1