



FCC Part 15C Test Report

FCC ID: 2AC5VEB5256

| | |
|------------------|--|
| Product Name: | Bluetooth Earphone |
| Trademark: | MVMT |
| Model Name : | EB5256 |
| Prepared For : | ARGENTOSC |
| Address : | 1407 BROADWAY STE 2201 NEWYORK USA 10018 |
| Prepared By : | Shenzhen BCTC Technology Co., Ltd. |
| Address : | No.101,Yousong Road,Longhua New District, Shenzhen,China |
| Test Date: | Mar. 24 – Mar. 29, 2016 |
| Date of Report : | Mar. 30, 2016 |
| Report No.: | BCTC-160302948E |



VERIFICATION OF COMPLIANCE

Applicant's name : **ARGENTOSC**
Address..... : 1407 BROADWAY STE 2201 NEWYORK USA 10018
Manufacturer's Name..... : **Dongguan Songman Technology CO., LTD**
Address..... : 2/3F,Building E,2nd Road,Fulong 2nd Industrial Zone,Shipai
Town,Dongguan,Guangdong Province,China

Product description

Product name : Bluetooth Earphone
Trademark: MVMT
Model Name: EB5256
Test procedure FCC Part15.249
Standards ANSI C63.10-2013

This device described above has been tested by BCTC, and the test results show that the equipment under test (EUT) is in compliance with the FCC requirements. And it is applicable only to the tested sample identified in the report.

This report shall not be reproduced except in full, without the written approval of BCTC, this document may be altered or revised by BCTC, personal only, and shall be noted in the revision of the document.

Test Result..... : **Pass**

Testing Engineer : Eric Yang
(Eric Yang)

Technical Manager : Sophie Lee
(Sophia Lee)

Authorized Signatory : Carson Zhang
(Carson. Zhang)





| Table of Contents | Page |
|---|-------------|
| 1 . SUMMARY OF TEST RESULTS | 4 |
| 1.1 TEST FACILITY | 4 |
| 1.2 MEASUREMENT UNCERTAINTY | 4 |
| 2 . GENERAL INFORMATION | 5 |
| 2.1 GENERAL DESCRIPTION OF EUT | 5 |
| 2.2 DESCRIPTION OF TEST MODES | 6 |
| 2.3 TABLE OF PARAMETERS OF TEXT SOFTWARE SETTING | 7 |
| 2.4 BLOCK DIGRAM SHOWING THE CONFIGURATION OF SYSTEM TESTED | 7 |
| 2.5 EQUIPMENTS LIST FOR ALL TEST ITEMS | 8 |
| 3 . EMC EMISSION TEST | 9 |
| 3.1 RADIATED EMISSION MEASUREMENT | 13 |
| 3.1.1 RADIATED EMISSION LIMITS | 13 |
| 3.1.2 TEST PROCEDURE | 14 |
| 3.1.3 DEVIATION FROM TEST STANDARD | 14 |
| 3.1.4 TEST SETUP | 15 |
| 3.1.5 EUT OPERATING CONDITIONS | 16 |
| 3.1.6 TEST RESULTS | 17 |
| 4 . BANDWIDTH TEST | 23 |
| 4.1 APPLIED PROCEDURES / LIMIT | 23 |
| 4.1.1 TEST PROCEDURE | 23 |
| 4.1.2 DEVIATION FROM STANDARD | 23 |
| 4.1.3 TEST SETUP | 23 |
| 4.1.4 EUT OPERATION CONDITIONS | 23 |
| 4.1.5 TEST RESULTS | 24 |
| 5 . BANDWIDTH OF FREQUENCY BAND EDGE | 29 |
| 5.1 DEVIATION FROM STANDARD | 29 |
| 5.2 TEST SETUP | 29 |
| 5.3 EUT OPERATION CONDITIONS | 29 |
| 5.4 TEST RESULTS | 30 |
| 6 . ANTENNA REQUIREMENT | 31 |
| 6.1 STANDARD REQUIREMENT | 31 |
| 6.2 EUT ANTENNA | 31 |
| 7 . EUT TEST PHOTO | 32 |



1. SUMMARY OF TEST RESULTS

Test procedures according to the technical standards:

| FCC Part15 (15.249) , Subpart C | | | |
|---------------------------------|----------------------------|----------|--------|
| Standard Section | Test Item | Judgment | Remark |
| 15.207 | Conducted Emission | PASS | |
| 15.249 | Radiated Spurious Emission | PASS | |
| 15.249 | Bandwidth | PASS | |
| 15.205 | Band Edge Emission | PASS | |
| 15.203 | Antenna Requirement | PASS | |

NOTE:

(1) "N/A" denotes test is not applicable in this Test Report

1.1 TEST FACILITY

Shenzhen BCTC Technology Co., Ltd.
Add.:No.101,Yousong Road,Longhua New District, Shenzhen,China
FCC Registration No.:187086

1.2 MEASUREMENT UNCERTAINTY

The reported uncertainty of measurement $y \pm U$, where expended uncertainty U is based on a standard uncertainty multiplied by a coverage factor of $k=2$, providing a level of confidence of approximately **95** %.

| No. | Item | Uncertainty |
|-----|------------------------------|---------------------------|
| 1 | Conducted Emission Test | $\pm 1.38\text{dB}$ |
| 2 | RF power,conducted | $\pm 0.16\text{dB}$ |
| 3 | Spurious emissions,conducted | $\pm 0.21\text{dB}$ |
| 4 | All emissions,radiated(<1G) | $\pm 4.68\text{dB}$ |
| 5 | All emissions,radiated(>1G) | $\pm 4.89\text{dB}$ |
| 6 | Temperature | $\pm 0.5^{\circ}\text{C}$ |
| 7 | Humidity | $\pm 2\%$ |



2. GENERAL INFORMATION

2.1 GENERAL DESCRIPTION OF EUT

| | | |
|------------------------|--|----------------------|
| Equipment | Bluetooth Earphone | |
| Trade Name | MVMT | |
| Model Name | EB5256 | |
| Product Description | Operation Frequency: | 2402~2480 MHz |
| | Modulation Type: | GFSK,PI/4 DPSK,8DPSK |
| | Bit Rate of Transmitter | 1M/2M/3Mbps |
| | Number Of Channel | 79 CH |
| | Antenna Designation: | Please see Note 3. |
| | Based on the application, features, or specification exhibited in User's Manual, the EUT is considered as an ITE/Computing Device. More details of EUT technical specification, please refer to the User's Manual. | |
| Channel List | Please refer to the Note 2. | |
| Adapter | DC 3.7V DC 5V from PC | |
| Battery | N/A | |
| Connecting I/O Port(s) | Please refer to the User's Manual | |
| hardware version | -- | |
| Software version | -- | |
| Serial number | -- | |

Note:

1. For a more detailed features description, please refer to the manufacturer's specifications or the User's Manual.
- 2.

| Channel List | | | | | |
|--------------|-----------------|---------|-----------------|---------|-----------------|
| Channel | Frequency (MHz) | Channel | Frequency (MHz) | Channel | Frequency (MHz) |
| 00 | 2402 | 27 | 2429 | 54 | 2456 |
| 01 | 2403 | 28 | 2430 | 55 | 2457 |
| 02 | 2404 | 29 | 2431 | 56 | 2458 |
| 03 | 2405 | 30 | 2432 | 57 | 2459 |
| 04 | 2406 | 31 | 2433 | 58 | 2460 |
| 05 | 2407 | 32 | 2434 | 59 | 2461 |
| 06 | 2408 | 33 | 2435 | 60 | 2462 |
| 07 | 2409 | 34 | 2436 | 61 | 2463 |
| 08 | 2410 | 35 | 2437 | 62 | 2464 |
| 09 | 2411 | 36 | 2438 | 63 | 2465 |
| 10 | 2412 | 37 | 2439 | 64 | 2466 |
| 11 | 2413 | 38 | 2440 | 65 | 2467 |



| | | | | | |
|----|------|----|------|----|------|
| 12 | 2414 | 39 | 2441 | 66 | 2468 |
| 13 | 2415 | 40 | 2442 | 67 | 2469 |
| 14 | 2416 | 41 | 2443 | 68 | 2470 |
| 15 | 2417 | 42 | 2444 | 69 | 2471 |
| 16 | 2418 | 43 | 2445 | 70 | 2472 |
| 17 | 2419 | 44 | 2446 | 71 | 2473 |
| 18 | 2420 | 45 | 2447 | 72 | 2474 |
| 19 | 2421 | 46 | 2448 | 73 | 2475 |
| 20 | 2422 | 47 | 2449 | 74 | 2476 |
| 21 | 2423 | 48 | 2450 | 75 | 2477 |
| 22 | 2424 | 49 | 2451 | 76 | 2478 |
| 23 | 2425 | 50 | 2452 | 77 | 2479 |
| 24 | 2426 | 51 | 2453 | 78 | 2480 |
| 25 | 2427 | 52 | 2454 | | |
| 26 | 2428 | 53 | 2455 | | |

3.

Table for Filed Antenna

| Ant. | Brand | Model Name | Antenna Type | Connector | Gain (dBi) | NOTE |
|------|-------|------------|------------------|-----------|------------|------|
| 1 | N/A | N/A | Internal Antenna | N/A | 2.0 | |

2.2 DESCRIPTION OF TEST MODES

To investigate the maximum EMI emission characteristics generates from EUT, the test system was pre-scanning tested base on the consideration of following EUT operation mode or test configuration mode which possible have effect on EMI emission level. Each of these EUT operation mode(s) or test configuration mode(s) mentioned above was evaluated respectively.

| Pretest Mode | Description |
|--------------|-------------|
| Mode 1 | CH00 |
| Mode 2 | CH39 |
| Mode 3 | CH78 |
| Mode 4 | Link Mode |

| For Conducted & Radiated Emission | |
|-----------------------------------|-------------|
| Final Test Mode | Description |
| Mode 1 | CH00 |
| Mode 2 | CH39 |
| Mode 3 | CH78 |
| Mode 4 | Link Mode |

Note:

- (1) The measurements are performed at the highest, middle, lowest available channels.
- (2) Fully-charged battery is used during the test



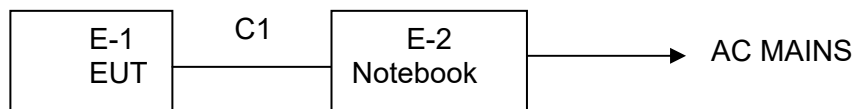
2.3 TABLE OF PARAMETERS OF TEXT SOFTWARE SETTING

During testing channel & power controlling software provided by the customer was used to control the operating channel as well as the output power level. The RF output power selection is for the setting of RF output power expected by the customer and is going to be fixed on the firmware of the final end product power parameters of FHSS

| | | | |
|-----------|----------|----------|----------|
| Frequency | 2402 MHz | 2441 MHz | 2480 MHz |
| Channel | Low | Middle | High |

2.4 BLOCK DIGRAM SHOWING THE CONFIGURATION OF SYSTEM TESTED

Emission Test



2.5 DESCRIPTION OF SUPPORT UNITS(CONDUCTED MODE)

The EUT has been tested as an independent unit together with other necessary accessories or support units. The following support units or accessories were used to form a representative test configuration during the tests.

| Item | Equipment | Mfr/Brand | Model/Type No. | Series No. | Note |
|------|--------------------|-----------|----------------|------------|------|
| E-1 | Bluetooth Earphone | N/A | EB5256 | 01 | EUT |
| E-2 | Notebook | ASUS | AWT8000 | N/A | |

| Item | Shielded Type | Ferrite Core | Length | Note |
|------|---------------|--------------|--------|------|
| C1 | NO | NO | 0.5M | |

Note:

- (1) The support equipment was authorized by Declaration of Confirmation.
- (2) For detachable type I/O cable should be specified the length in cm in 『Length』 column.
- (3) “YES” is means “shielded” “with core”; “NO” is means “unshielded” “without core”.



2.6 EQUIPMENTS LIST FOR ALL TEST ITEMS

Conduction Test equipment

| Item | Kind of Equipment | Manufacturer | Type No. | Serial No. | Last calibration | Calibrated until | Calibration period |
|------|--------------------|--------------|----------|------------------------|------------------|------------------|--------------------|
| 1 | Test Receiver | R&S | ESCI | 1166.5950K03-101165-ha | 2015.06.06 | 2016.06.05 | 1 year |
| 2 | LISN | R&S | NSLK8126 | 8126466 | 2015.08.24 | 2016.08.23 | 1 year |
| 3 | LISN | R&S | NSLK8126 | 8126487 | 2015.08.24 | 2016.08.23 | 1 year |
| 4 | 50Ω Coaxial Switch | Anritsu | MP59B | 6200264417 | 2015.06.06 | 2016.06.05 | 1 year |
| 5 | RF cables | R&S | R204 | R20X | 2015.06.06 | 2016.06.05 | 1 year |

Radiation test, Band-edge test and 20db bandwidth test equipment

| Item | Kind of Equipment | Manufacturer | Type No. | Serial No. | Last calibration | Calibrated until | Calibration period |
|------|--------------------|----------------|------------|--------------|------------------|------------------|--------------------|
| 1 | Spectrum Analyzer | Agilent | E4407B | MY45108040 | 2015.06.06 | 2016.06.05 | 1 year |
| 2 | Test Receiver | R&S | ESPI | 101318 | 2015.06.06 | 2016.06.05 | 1 year |
| 3 | Bilog Antenna | R&S | VULB9168 | VULB9168-438 | 2015.06.06 | 2016.06.05 | 1 year |
| 4 | 50Ω Coaxial Switch | Anritsu | MP59B | 6200264416 | 2015.06.06 | 2016.06.05 | 1 year |
| 5 | Spectrum Analyzer | ADVANTEST | R3132 | 150900201 | 2015.06.06 | 2016.06.05 | 1 year |
| 6 | Horn Antenna | R&S | HF906 | 10027 | 2015.06.06 | 2016.06.05 | 1 year |
| 7 | Horn Ant | Schwarzbeck | BBHA 9170 | 9170-181 | 2015.06.06 | 2016.06.05 | 1 year |
| 8 | Amplifier | R&S | BBV9743 | 9743-019 | 2014.12.22 | 2015.12.21 | 1 year |
| 9 | Loop Antenna | ARA | PLA-1030/B | 1029 | 2015.06.06 | 2016.06.05 | 1 year |
| 10 | RF cables | R&S | R203 | R20X | 2015.06.06 | 2016.06.05 | 1 year |
| 11 | Antenna connector | Florida RFLabs | Lab-Fle | RF 01# | 2015.06.06 | 2016.06.05 | 1 year |



3. EMC EMISSION TEST

3.1 CONDUCTED EMISSION MEASUREMENT

3.1.1 POWER LINE CONDUCTED EMISSION Limits (Frequency Range 150KHz-30MHz)

| FREQUENCY (MHz) | Class B (dBuV) | | Standard |
|-----------------|----------------|-----------|----------|
| | Quas -peak | Average | |
| 0.15 -0.5 | 66 - 56 * | 56 - 46 * | FCC |
| 0.50 -5.0 | 56.00 | 46.00 | FCC |
| 5.0 -30.0 | 60.00 | 50.00 | FCC |

Note:

- (1) The tighter limit applies at the band edges.
- (2) The limit of " * " marked band means the limitation decreases linearly with the logarithm of the frequency in the range.

The following table is the setting of the receiver

| Receiver Parameters | Setting |
|---------------------|----------|
| Attenuation | 10 dB |
| Start Frequency | 0.15 MHz |
| Stop Frequency | 30 MHz |
| IF Bandwidth | 9 kHz |

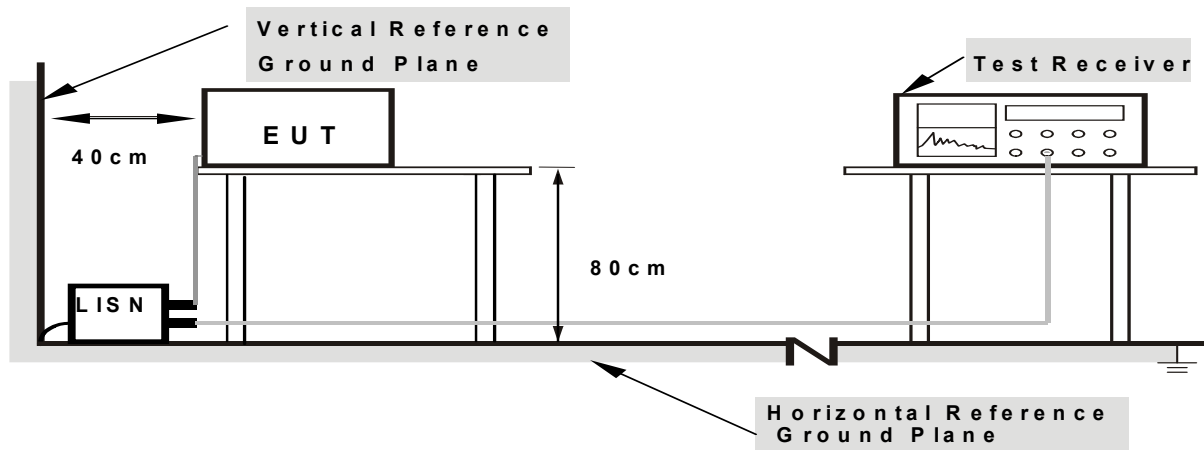
3.1.2 TEST PROCEDURE

- a. The EUT was placed 0.8 meters from the horizontal ground plane with EUT being connected to the power mains through a line impedance stabilization network (LISN). All other support equipments powered from additional LISN(s). The LISN provide 50 Ohm/ 50uH of coupling impedance for the measuring instrument.
- b. Interconnecting cables that hang closer than 40 cm to the ground plane shall be folded back and forth in the center forming a bundle 30 to 40 cm long.
- c. I/O cables that are not connected to a peripheral shall be bundled in the center. The end of the cable may be terminated, if required, using the correct terminating impedance. The overall length shall not exceed 1 m.
- d. LISN at least 80 cm from nearest part of EUT chassis.
- e. For the actual test configuration, please refer to the related Item –EUT Test Photos.

3.1.3 DEVIATION FROM TEST STANDARD

No deviation

3.1.4 TEST SETUP



- Note: 1.Support units were connected to second LISN.
2.Both of LISNs (AMN) are 80 cm from EUT and at least 80 cm from other units and other metal planes

3.1.5 EUT OPERATING CONDITIONS

The EUT was configured for testing in a typical fashion (as a customer would normally use it). The EUT has been programmed to continuously transmit during test. This operating condition was tested and used to collect the included data.

The data only show the worst mode.



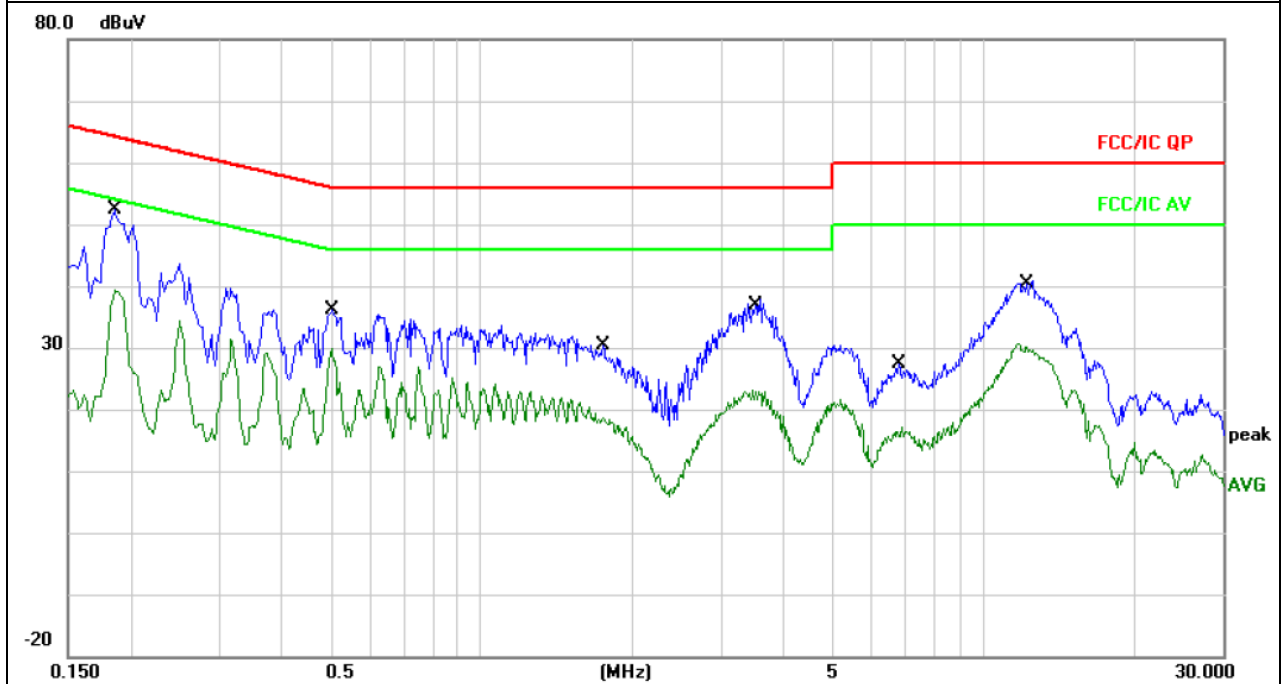
3.1.6 TEST RESULTS

| | | | |
|----------------|----------------------------------|---------------------|--------|
| EUT : | Bluetooth Earphone | Model Name : | EB5256 |
| Temperature : | 25 °C | Relative Humidity : | 54% |
| Pressure : | 1010hPa | Phase : | L |
| Test Voltage : | DC 5V from PC input AC 120V/60Hz | Test Mode : | Mode 4 |

| No. Mk. | Freq. MHz | Reading Level dBuV | Correct Factor dB | Measurement dBuV | Limit dBuV | Over dB | Detector | Comment |
|---------|-----------|--------------------|-------------------|------------------|------------|---------|----------|---------|
| 1 * | 0.1860 | 42.30 | 10.06 | 52.36 | 64.21 | -11.85 | QP | |
| 2 | 0.1860 | 29.21 | 10.06 | 39.27 | 54.21 | -14.94 | AVG | |
| 3 | 0.5020 | 26.12 | 10.11 | 36.23 | 56.00 | -19.77 | QP | |
| 4 | 0.5020 | 19.79 | 10.11 | 29.90 | 46.00 | -16.10 | AVG | |
| 5 | 1.7460 | 20.27 | 10.18 | 30.45 | 56.00 | -25.55 | QP | |
| 6 | 1.7460 | 7.27 | 10.18 | 17.45 | 46.00 | -28.55 | AVG | |
| 7 | 3.4740 | 27.82 | 10.18 | 38.00 | 56.00 | -18.00 | QP | |
| 8 | 3.4740 | 12.88 | 10.18 | 23.06 | 46.00 | -22.94 | AVG | |
| 9 | 6.7700 | 17.34 | 10.10 | 27.44 | 60.00 | -32.56 | QP | |
| 10 | 6.7700 | 7.05 | 10.10 | 17.15 | 50.00 | -32.85 | AVG | |
| 11 | 12.2299 | 30.71 | 10.13 | 40.84 | 60.00 | -19.16 | QP | |
| 12 | 12.2299 | 20.08 | 10.13 | 30.21 | 50.00 | -19.79 | AVG | |

Remark:

1. All readings are Quasi-Peak and Average values.
2. Factor = Insertion Loss + Cable Loss.



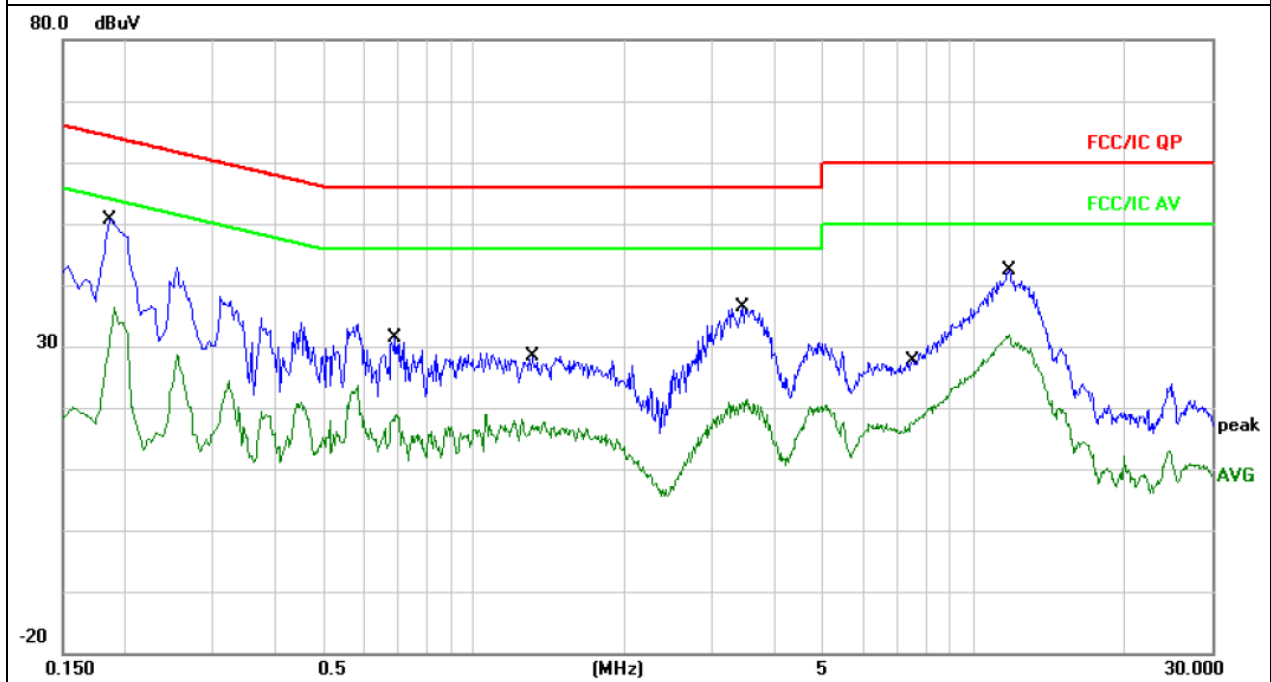


| | | | |
|----------------|----------------------------------|---------------------|--------|
| EUT : | Bluetooth Earphone | Model Name : | EB5256 |
| Temperature : | 25 °C | Relative Humidity : | 54% |
| Pressure : | 1010hPa | Phase : | N |
| Test Voltage : | DC 5V from PC input AC 120V/60Hz | Test Mode : | Mode 4 |

| No. | Mk. | Freq. | Reading Level | Correct Factor | Measurement | Limit | Over | Detector | Comment |
|-----|-----|---------|---------------|----------------|-------------|-------|--------|----------|---------|
| | | MHz | dBuV | dB | dBuV | dBuV | dB | | |
| 1 | * | 0.1874 | 40.51 | 10.06 | 50.57 | 64.15 | -13.58 | QP | |
| 2 | | 0.1874 | 26.20 | 10.06 | 36.26 | 54.15 | -17.89 | AVG | |
| 3 | | 0.6940 | 21.16 | 10.13 | 31.29 | 56.00 | -24.71 | QP | |
| 4 | | 0.6940 | 8.82 | 10.13 | 18.95 | 46.00 | -27.05 | AVG | |
| 5 | | 1.3060 | 18.10 | 10.17 | 28.27 | 56.00 | -27.73 | QP | |
| 6 | | 1.3060 | 7.47 | 10.17 | 17.64 | 46.00 | -28.36 | AVG | |
| 7 | | 3.4500 | 26.13 | 10.18 | 36.31 | 56.00 | -19.69 | QP | |
| 8 | | 3.4500 | 11.24 | 10.18 | 21.42 | 46.00 | -24.58 | AVG | |
| 9 | | 7.5300 | 17.52 | 10.10 | 27.62 | 60.00 | -32.38 | QP | |
| 10 | | 7.5300 | 13.06 | 10.10 | 23.16 | 50.00 | -26.84 | AVG | |
| 11 | | 11.7780 | 32.21 | 10.13 | 42.34 | 60.00 | -17.66 | QP | |
| 12 | | 11.7780 | 21.87 | 10.13 | 32.00 | 50.00 | -18.00 | AVG | |

Remark:

1. All readings are Quasi-Peak and Average values.
2. Factor = Insertion Loss + Cable Loss.





3.2 RADIATED EMISSION MEASUREMENT

3.2.1 RADIATED EMISSION LIMITS (Frequency Range 9kHz-1000MHz)

20dBc in any 100 kHz bandwidth outside the operating frequency band. In case the emission fall within the restricted band specified on 15.205(a), then the 15.209(a) limit in the table below has to be followed.

| Frequencies (MHz) | Field Strength (micorvolts/meter) | Measurement Distance (meters) |
|-------------------|-----------------------------------|-------------------------------|
| 0.009~0.490 | 2400/F(KHz) | 300 |
| 0.490~1.705 | 24000/F(KHz) | 30 |
| 1.705~30.0 | 30 | 30 |
| 30~88 | 100 | 3 |
| 88~216 | 150 | 3 |
| 216~960 | 200 | 3 |
| Above 960 | 500 | 3 |

LIMITS OF RADIATED EMISSION MEASUREMENT (Above 1000MHz)

| FREQUENCY (MHz) | Class B (dBuV/m) (at 3M) | |
|-----------------|--------------------------|---------|
| | PEAK | AVERAGE |
| Above 1000 | 74 | 54 |

Notes:

- (1) The limit for radiated test was performed according to FCC PART 15C.
- (2) The tighter limit applies at the band edges.
- (3) Emission level (dBuV/m)=20log Emission level (uV/m).

FREQUENCY RANGE OF RADIATED MEASUREMENT (For unintentional radiators)

| Highest frequency generated or Upper frequency of measurement used in the device or on which the device operates or tunes (MHz) | Range (MHz) |
|---|---|
| Below 1.705 | 30 |
| 1.705 – 108 | 1000 |
| 108 – 500 | 2000 |
| 500 – 1000 | 5000 |
| Above 1000 | 5 th harmonic of the highest frequency or 40 GHz, whichever is lower |



| Spectrum Parameter | Setting |
|---------------------------------------|--|
| Attenuation | Auto |
| Start Frequency | 1000 MHz |
| Stop Frequency | 10th carrier harmonic |
| RB / VB (emission in restricted band) | 1 MHz / 1 MHz for Peak, 1 MHz / 10Hz for Average |

| Receiver Parameter | Setting |
|------------------------|----------------------------------|
| Attenuation | Auto |
| Start ~ Stop Frequency | 9kHz~150kHz / RB 200Hz for QP |
| Start ~ Stop Frequency | 150kHz~30MHz / RB 9kHz for QP |
| Start ~ Stop Frequency | 30MHz~1000MHz / RB 120kHz for QP |

3.2.2 TEST PROCEDURE

- a. The measuring distance of at 3 m shall be used for measurements at frequency up to 25GHz. For frequencies above 1GHz, any suitable measuring distance may be used.
- b. The EUT was placed on the top of a rotating table 1.5 meters above the ground at a 3 meter open area test site. The table was rotated 360 degrees to determine the position of the highest radiation.
- c. The height of the equipment or of the substitution antenna shall be 1.5 m; the height of the test antenna shall vary between 1 m to 4 m. Both horizontal and vertical polarizations of the antenna are set to make the measurement.
- d. If the Peak Mode measured value compliance with and lower than Quasi Peak Mode Limit, the EUT shall be deemed to meet QP Limits and then no additional QP Mode measurement performed.
- e. For the actual test configuration, please refer to the related Item –EUT Test Photos.
- f. For the radiated emission test above 1GHz:

Place the measurement antenna away from each area of the EUT determined to be a source of emissions at the specified measurement distance, while keeping the measurement antenna aimed at the source of emissions at each frequency of significant emissions, with polarization oriented for maximum response.

The measurement antenna may have to be higher or lower than the EUT, depending on the radiation pattern of the emission and staying aimed at the emission source for receiving the maximum signal. The final measurement antenna elevation shall be that which maximizes the emissions. The measurement antenna elevation for maximum emissions shall be restricted to a range of heights of from 1 m to 4 m above the ground or reference ground plane.

Note:

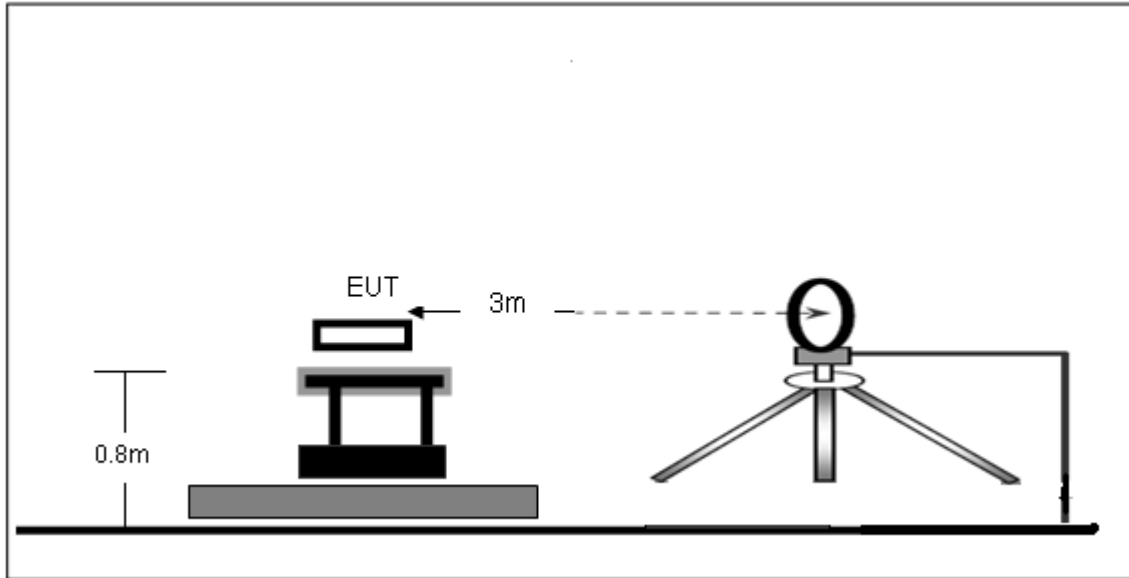
Both horizontal and vertical antenna polarities were tested and performed pretest to three orthogonal axis. The worst case emissions were reported

3.2.3 DEVIATION FROM TEST STANDARD

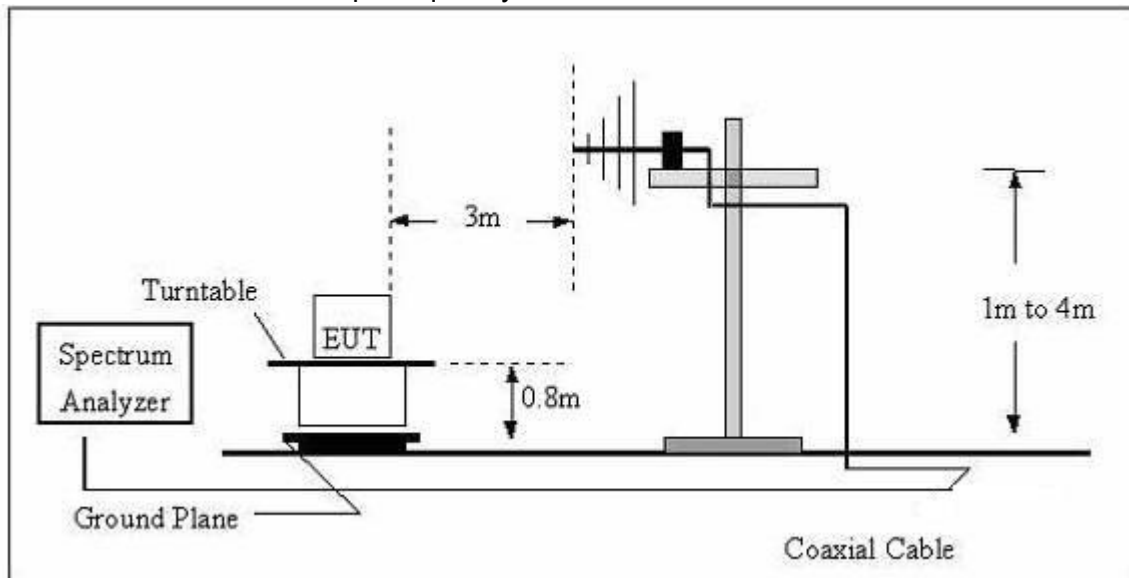
No deviation

3.2.4 TEST SETUP

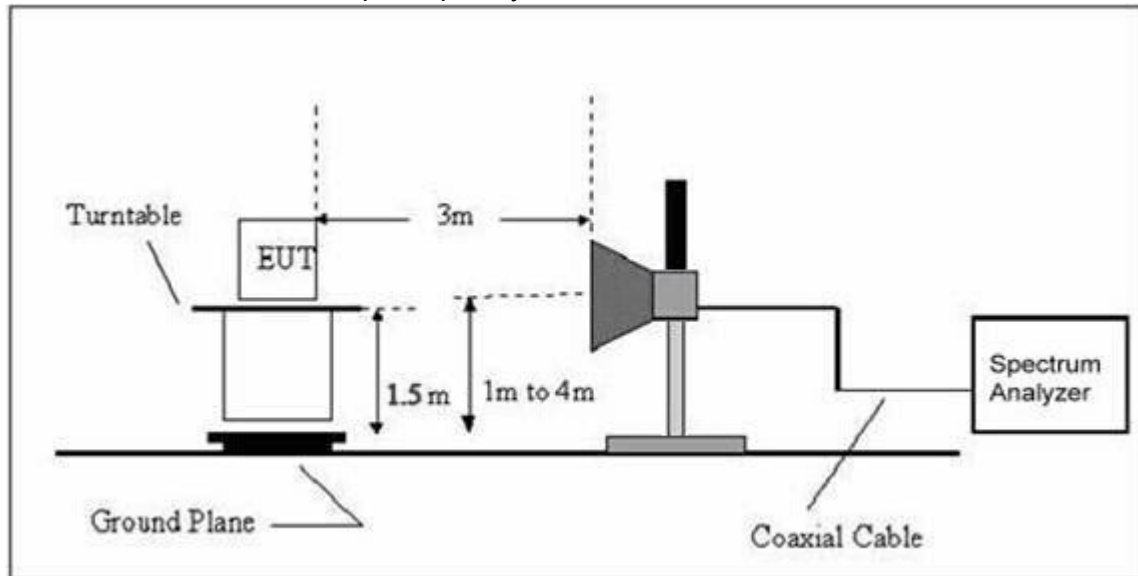
(A) Radiated Emission Test-Up Frequency Below 30MHz



(B) Radiated Emission Test-Up Frequency 30MHz~1GHz



(C) Radiated Emission Test-Up Frequency Above 1GHz

**3.2.5 EUT OPERATING CONDITIONS**

The EUT tested system was configured as the statements of 2.4 Unless otherwise a special operating condition is specified in the follows during the testing.



3.2.6 TEST RESULTS

Radiated Spurious Emission (Below 30MHz)

| | | | |
|----------------|--------------------|---------------------|--------|
| EUT : | Bluetooth Earphone | Model Name : | EB5256 |
| Temperature : | 20 °C | Relative Humidity : | 48% |
| Pressure : | 1010 hPa | Polarization : | --- |
| Test Voltage : | DC 3.7V | | |
| Test Mode : | TX | | |

| Freq. | Reading | Limit | Margin | State |
|-------|----------|----------|--------|-------|
| (MHz) | (dBuV/m) | (dBuV/m) | (dB) | P/F |
| -- | -- | -- | -- | PASS |
| -- | -- | -- | -- | PASS |

NOTE:

The amplitude of spurious emissions which are attenuated by more than 20dB below the permissible value has no need to be reported.

Distance extrapolation factor = $40 \log(\text{specific distance}/\text{test distance})(\text{dB})$;

Limit line = specific limits(dBuv) + distance extrapolation factor.



Radiated Spurious Emission (Between 30MHz – 1GHz)

| | | | |
|------------------------|--------------------|---------------------|------------|
| EUT : | Bluetooth Earphone | Model Name : | EB5256 |
| Temperature : | 26 °C | Relative Humidity : | 54% |
| Pressure : | 1010 hPa | Polarization : | Horizontal |
| Test Voltage : | DC 3.7V | | |
| Test Mode : (Worst) | TX Low Channel | | |

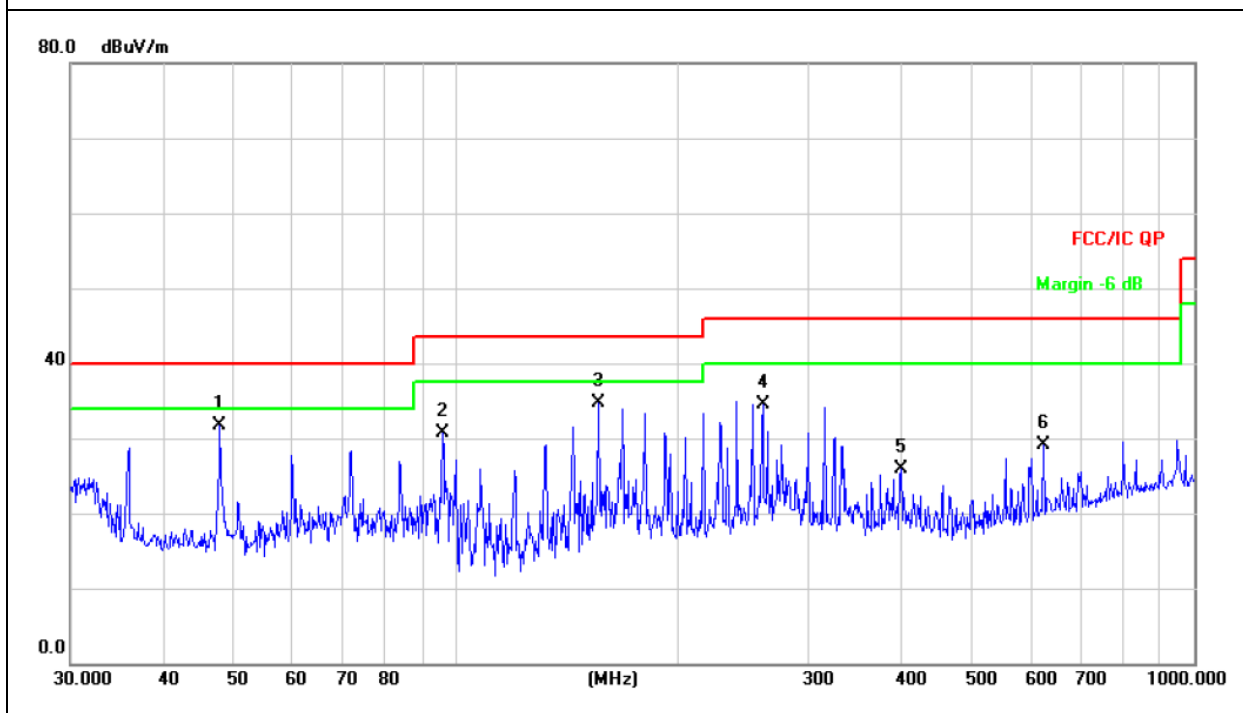
| No. | Mk. | Freq. MHz | Reading Level dBuV | Correct Factor dB/m | Measure- ment dBuV/m | Limit dBuV/m | Over dB | Detector | Antenna Height cm | Table Degree | Comment |
|-----|-----|--------------|--------------------------|---------------------------|----------------------------|-----------------|------------|----------|-------------------------|-----------------|---------|
| 1 | * | 47.8260 | 41.60 | -9.94 | 31.66 | 40.00 | -8.34 | QP | | | |
| 2 | | 95.7622 | 47.59 | -16.93 | 30.66 | 43.50 | -12.84 | QP | | | |
| 3 | | 155.9101 | 47.53 | -12.87 | 34.66 | 43.50 | -8.84 | QP | | | |
| 4 | | 260.1444 | 48.50 | -13.91 | 34.59 | 46.00 | -11.41 | QP | | | |
| 5 | | 400.4319 | 36.16 | -10.17 | 25.99 | 46.00 | -20.01 | QP | | | |
| 6 | | 625.0780 | 34.63 | -5.52 | 29.11 | 46.00 | -16.89 | QP | | | |

Remark:

Factor = Antenna Factor + Cable Loss – Pre-amplifier.

Pretest all mode, the data only show the worst mode.

If peak level comply with Quasi-Peak limit, then the Quasi-Peak level is deemed to comply with Quasi-Peak limit.





| | | | |
|------------------------|--------------------|---------------------|----------|
| EUT : | Bluetooth Earphone | Model Name : | EB5256 |
| Temperature : | 26 °C | Relative Humidity : | 54% |
| Pressure : | 1010 hPa | Polarization : | Vertical |
| Test Voltage : | DC 3.7V | | |
| Test Mode : (Worst) | TX Low Channel | | |

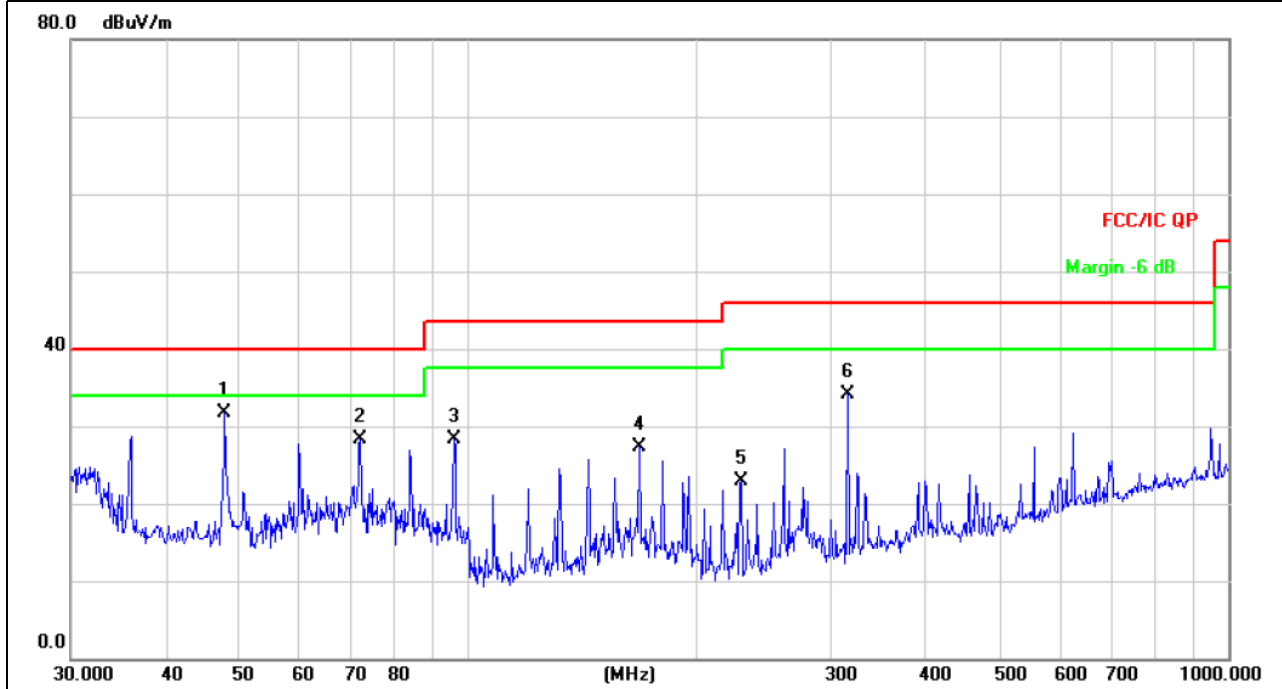
| No. | Mk. | Freq. | Reading Level | Correct Factor | Measurement | Limit | Over | Antenna Height | Table Degree | |
|-----|-----|----------|---------------|----------------|-------------|--------|--------|----------------|--------------|---------|
| | | MHz | dBuV | dB/m | dBuV/m | dBuV/m | dB | cm | degree | Comment |
| 1 | * | 47.8260 | 41.60 | -9.94 | 31.66 | 40.00 | -8.34 | QP | | |
| 2 | | 72.0843 | 43.64 | -15.27 | 28.37 | 40.00 | -11.63 | QP | | |
| 3 | | 95.7622 | 45.28 | -16.93 | 28.35 | 43.50 | -15.15 | QP | | |
| 4 | | 167.8243 | 40.68 | -13.32 | 27.36 | 43.50 | -16.14 | QP | | |
| 5 | | 228.4904 | 38.05 | -15.14 | 22.91 | 46.00 | -23.09 | QP | | |
| 6 | | 315.4808 | 46.28 | -12.18 | 34.10 | 46.00 | -11.90 | QP | | |

Remark:

Factor = Antenna Factor + Cable Loss – Pre-amplifier.

Pretest all mode, the data only show the worst mode.

If peak level comply with Quasi-Peak limit, then the Quasi-Peak level is deemed to comply with Quasi-Peak limit.





Radiated Spurious Emission (1GHz to 10th harmonics)

GFSK

| | Freq. | Receiver Reading | Detector | Polar | Corrected Factor | Emission Level | Limit | Result |
|----------------------------------|-----------------------------------|------------------|-------------|-------|------------------|----------------|----------|--------|
| | (MHz) | (dBμV) | (PK/QP/Ave) | (H/V) | (dB) | (dBμV/m) | (dBμV/m) | |
| Lower Channel 2402MHz | 2402.00 | 102.31 | PK | H | 1.31 | 103.62 | 114.00 | Pass |
| | 2402.00 | 88.20 | Ave | H | 1.31 | 89.51 | 94.00 | Pass |
| | 4804.00 | 57.25 | PK | H | -1.06 | 56.19 | 74.00 | Pass |
| | 4804.00 | 48.32 | Ave | H | -1.06 | 47.26 | 54.00 | Pass |
| | 2402.00 | 101.25 | PK | V | 1.31 | 102.56 | 114.00 | Pass |
| | 2402.00 | 87.49 | Ave | V | 1.31 | 88.80 | 94.00 | Pass |
| | 4804.00 | 58.25 | PK | V | -1.06 | 57.19 | 74.00 | Pass |
| | 4804.00 | 46.86 | Ave | V | -1.06 | 45.80 | 54.00 | Pass |
| | Middle Channel 2441MHz | 2441.00 | 102.18 | PK | H | 0.85 | 103.03 | 114.00 |
| 2441.00 | | 87.73 | Ave | H | 0.85 | 88.58 | 94.00 | Pass |
| 4882.00 | | 54.11 | PK | H | -0.62 | 53.49 | 74.00 | Pass |
| 4882.00 | | 43.35 | Ave | H | -0.62 | 42.73 | 54.00 | Pass |
| 2441.00 | | 100.99 | PK | V | 0.85 | 101.84 | 114.00 | Pass |
| 2441.00 | | 86.18 | Ave | V | 0.85 | 87.03 | 94.00 | Pass |
| 4882.00 | | 54.41 | PK | V | -0.62 | 53.79 | 74.00 | Pass |
| 4882.00 | | 43.22 | Ave | V | -0.62 | 42.60 | 54.00 | Pass |
| Upper Channel 2480MHz | 2480.00 | 99.62 | PK | H | 0.53 | 100.15 | 114.00 | Pass |
| | 2480.00 | 85.44 | Ave | H | 0.53 | 85.97 | 94.00 | Pass |
| | 4960.00 | 50.83 | PK | H | -0.24 | 50.59 | 74.00 | Pass |
| | 4960.00 | 42.09 | Ave | H | -0.24 | 41.85 | 54.00 | Pass |
| | 2480.00 | 98.80 | PK | V | 0.53 | 99.33 | 114.00 | Pass |
| | 2480.00 | 84.74 | Ave | V | 0.53 | 85.27 | 94.00 | Pass |
| | 4960.00 | 52.93 | PK | V | -0.24 | 52.69 | 74.00 | Pass |
| | 4960.00 | 42.29 | Ave | V | -0.24 | 42.05 | 54.00 | Pass |

Remark:

Factor = Antenna Factor + Cable Loss – Pre-amplifier.

Emission Level = Meter Reading + Factor

Margin = Emission Level - Limit

Other harmonics emissions are lower than 20dB below the allowable limit.



PI/4 DPSK

| | Freq. | Receiver Reading | Detector | Polar | Corrected Factor | Emission Level | Limit | Result |
|----------------------------------|-----------------------------------|------------------|-------------|-------|------------------|----------------|----------|--------|
| | (MHz) | (dBμV) | (PK/QP/Ave) | (H/V) | (dB) | (dBμV/m) | (dBμV/m) | |
| Lower Channel 2402MHz | 2402.00 | 101.16 | PK | H | 1.31 | 102.47 | 114.00 | Pass |
| | 2402.00 | 87.21 | Ave | H | 1.31 | 88.52 | 94.00 | Pass |
| | 4804.00 | 56.59 | PK | H | -1.06 | 55.53 | 74.00 | Pass |
| | 4804.00 | 47.78 | Ave | H | -1.06 | 46.72 | 54.00 | Pass |
| | 2402.00 | 100.10 | PK | V | 1.31 | 101.41 | 114.00 | Pass |
| | 2402.00 | 86.48 | Ave | V | 1.31 | 87.79 | 94.00 | Pass |
| | 4804.00 | 57.60 | PK | V | -1.06 | 56.54 | 74.00 | Pass |
| | 4804.00 | 46.33 | Ave | V | -1.06 | 45.27 | 54.00 | Pass |
| | Middle Channel 2441MHz | 2441.00 | 101.02 | PK | H | 0.85 | 101.87 | 114.00 |
| 2441.00 | | 86.75 | Ave | H | 0.85 | 87.60 | 94.00 | Pass |
| 4882.00 | | 53.50 | PK | H | -0.62 | 52.88 | 74.00 | Pass |
| 4882.00 | | 42.88 | Ave | H | -0.62 | 42.26 | 54.00 | Pass |
| 2441.00 | | 99.84 | PK | V | 0.85 | 100.69 | 114.00 | Pass |
| 2441.00 | | 85.21 | Ave | V | 0.85 | 86.06 | 94.00 | Pass |
| 4882.00 | | 53.82 | PK | V | -0.62 | 53.20 | 74.00 | Pass |
| 4882.00 | | 42.74 | Ave | V | -0.62 | 42.12 | 54.00 | Pass |
| Upper Channel 2480MHz | 2480.00 | 98.50 | PK | H | 0.53 | 99.03 | 114.00 | Pass |
| | 2480.00 | 84.49 | Ave | H | 0.53 | 85.02 | 94.00 | Pass |
| | 4960.00 | 50.24 | PK | H | -0.24 | 50.00 | 74.00 | Pass |
| | 4960.00 | 41.61 | Ave | H | -0.24 | 41.37 | 54.00 | Pass |
| | 2480.00 | 97.69 | PK | V | 0.53 | 98.22 | 114.00 | Pass |
| | 2480.00 | 83.79 | Ave | V | 0.53 | 84.32 | 94.00 | Pass |
| | 4960.00 | 52.34 | PK | V | -0.24 | 52.10 | 74.00 | Pass |
| | 4960.00 | 41.81 | Ave | V | -0.24 | 41.57 | 54.00 | Pass |

Remark:

Factor = Antenna Factor + Cable Loss – Pre-amplifier.

Emission Level = Meter Reading + Factor

Margin = Emission Level - Limit

Other harmonics emissions are lower than 20dB below the allowable limit.

8DPSK



| | Freq. | Receiver Reading | Detector | Polar | Corrected Factor | Emission Level | Limit | Result | |
|----------------------------------|-----------------------------------|------------------|-------------|-------|------------------|----------------|----------|--------|------|
| | (MHz) | (dBμV) | (PK/QP/Ave) | (H/V) | (dB) | (dBμV/m) | (dBμV/m) | | |
| Lower Channel 2402MHz | 2402.00 | 101.72 | PK | H | 1.31 | 103.03 | 114.00 | Pass | |
| | 2402.00 | 87.69 | Ave | H | 1.31 | 89.00 | 94.00 | Pass | |
| | 4804.00 | 56.90 | PK | H | -1.06 | 55.84 | 74.00 | Pass | |
| | 4804.00 | 48.05 | Ave | H | -1.06 | 46.99 | 54.00 | Pass | |
| | 2402.00 | 100.64 | PK | V | 1.31 | 101.95 | 114.00 | Pass | |
| | 2402.00 | 86.99 | Ave | V | 1.31 | 88.30 | 94.00 | Pass | |
| | 4804.00 | 57.91 | PK | V | -1.06 | 56.85 | 74.00 | Pass | |
| | 4804.00 | 46.57 | Ave | V | -1.06 | 45.51 | 54.00 | Pass | |
| | Middle Channel 2441MHz | 2441.00 | 101.59 | PK | H | 0.85 | 102.44 | 114.00 | Pass |
| | | 2441.00 | 87.22 | Ave | H | 0.85 | 88.07 | 94.00 | Pass |
| 4882.00 | | 53.80 | PK | H | -0.62 | 53.18 | 74.00 | Pass | |
| 4882.00 | | 43.10 | Ave | H | -0.62 | 42.48 | 54.00 | Pass | |
| 2441.00 | | 100.40 | PK | V | 0.85 | 101.25 | 114.00 | Pass | |
| 2441.00 | | 85.67 | Ave | V | 0.85 | 86.52 | 94.00 | Pass | |
| 4882.00 | | 54.10 | PK | V | -0.62 | 53.48 | 74.00 | Pass | |
| 4882.00 | | 42.96 | Ave | V | -0.62 | 42.34 | 54.00 | Pass | |
| Upper Channel 2480MHz | 2480.00 | 99.03 | PK | H | 0.53 | 99.56 | 114.00 | Pass | |
| | 2480.00 | 84.94 | Ave | H | 0.53 | 85.47 | 94.00 | Pass | |
| | 4960.00 | 50.52 | PK | H | -0.24 | 50.28 | 74.00 | Pass | |
| | 4960.00 | 41.84 | Ave | H | -0.24 | 41.60 | 54.00 | Pass | |
| | 2480.00 | 98.22 | PK | V | 0.53 | 98.75 | 114.00 | Pass | |
| | 2480.00 | 84.23 | Ave | V | 0.53 | 84.76 | 94.00 | Pass | |
| | 4960.00 | 52.62 | PK | V | -0.24 | 52.38 | 74.00 | Pass | |
| | 4960.00 | 42.04 | Ave | V | -0.24 | 41.80 | 54.00 | Pass | |

Remark:

Factor = Antenna Factor + Cable Loss – Pre-amplifier.

Emission Level = Meter Reading + Factor

Margin = Emission Level - Limit

Other harmonics emissions are lower than 20dB below the allowable limit.



4. BANDWIDTH TEST

4.1 APPLIED PROCEDURES / LIMIT

| FCC Part15 (15.249) , Subpart C | | | | |
|---------------------------------|-----------|------------------|-----------------------|--------|
| Section | Test Item | Limit | Frequency Range (MHz) | Result |
| 15.249 | Bandwidth | (20dB bandwidth) | 2400-2483.5 | PASS |

| Spectrum Parameter | Setting |
|--------------------|---|
| Attenuation | Auto |
| Span Frequency | > Measurement Bandwidth or Channel Separation |
| RB | 30KHz |
| VB | ≥RBW |
| Detector | Peak |
| Trace | Max Hold |
| Sweep Time | Auto |

4.1.1 TEST PROCEDURE

- a. The EUT was directly connected to the spectrum analyzer and antenna output port as show in the block diagram below,
- b. Spectrum Setting : RBW= 30KHz, VBW≥ RBW, Sweep time = Auto.

4.1.2 DEVIATION FROM STANDARD

No deviation.

4.1.3 TEST SETUP



4.1.4 EUT OPERATION CONDITIONS

The EUT tested system was configured as the statements of 2.4 Unless otherwise a special operating condition is specified in the follows during the testing.

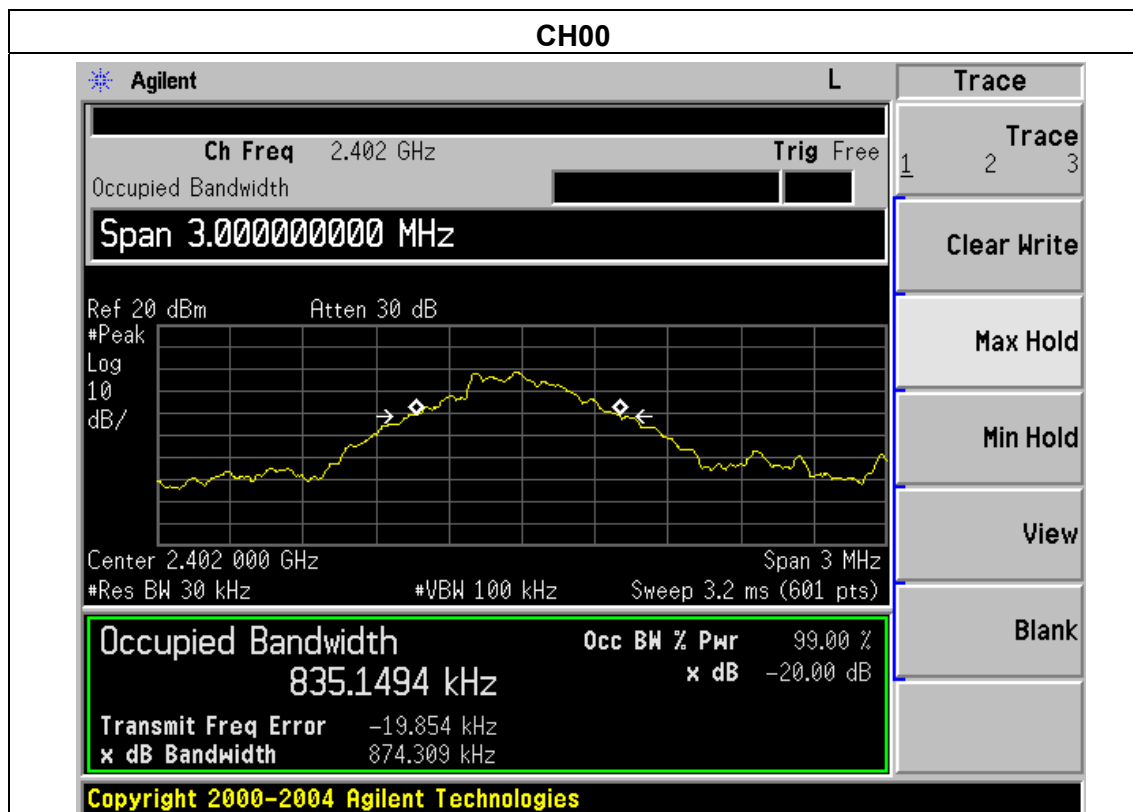


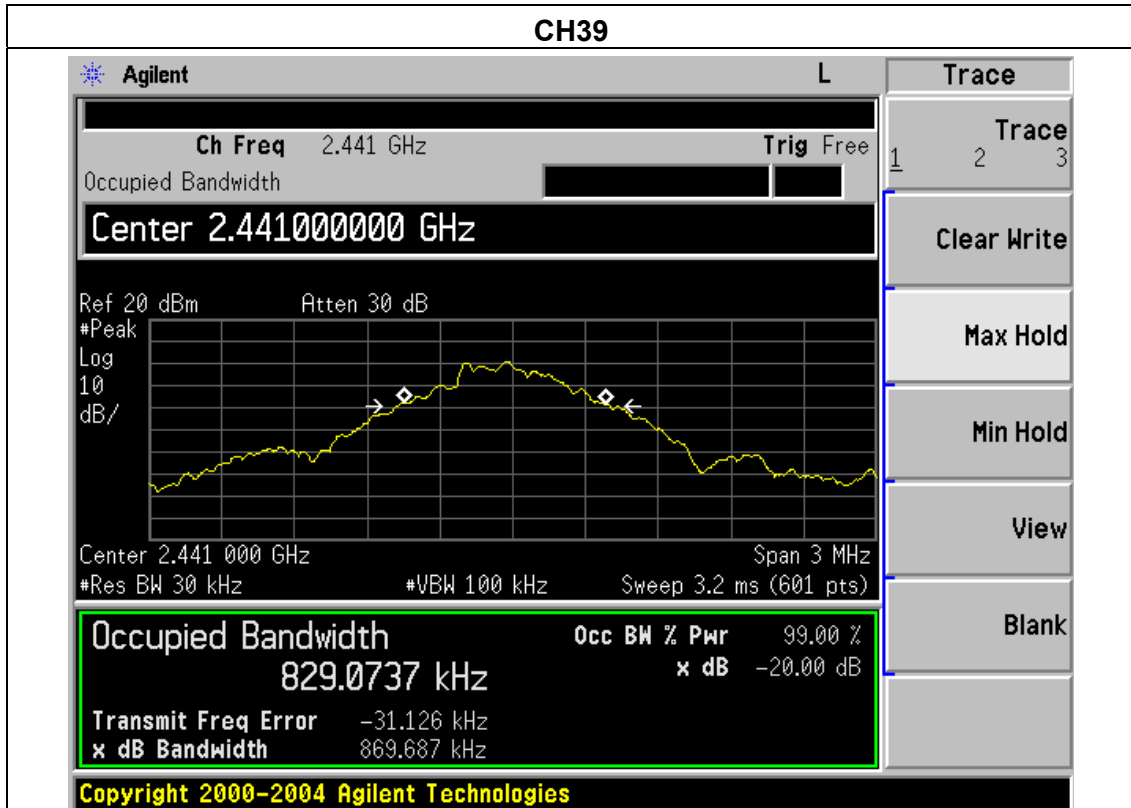
4.1.5 TEST RESULTS

| | | | |
|---------------|--------------------|---------------------|---------|
| EUT : | Bluetooth Earphone | Model Name : | EB5256 |
| Temperature : | 25 °C | Relative Humidity : | 60% |
| Pressure : | 1012 hPa | Test Voltage : | DC 3.7V |
| Test Mode : | CH00 / CH39 /C78 | | |

| | Frequency | 20dB Bandwidth (MHz) | Result |
|-----------|-----------|----------------------|--------|
| GFSK | 2402 MHz | 0.874 | PASS |
| | 2441 MHz | 0.870 | PASS |
| | 2480 MHz | 0.868 | PASS |
| PI/4 DPSK | 2402 MHz | 1.209 | PASS |
| | 2441 MHz | 1.223 | PASS |
| | 2480 MHz | 1.222 | PASS |
| 8DPSK | 2402 MHz | 1.210 | PASS |
| | 2441 MHz | 1.213 | PASS |
| | 2480 MHz | 1.215 | PASS |

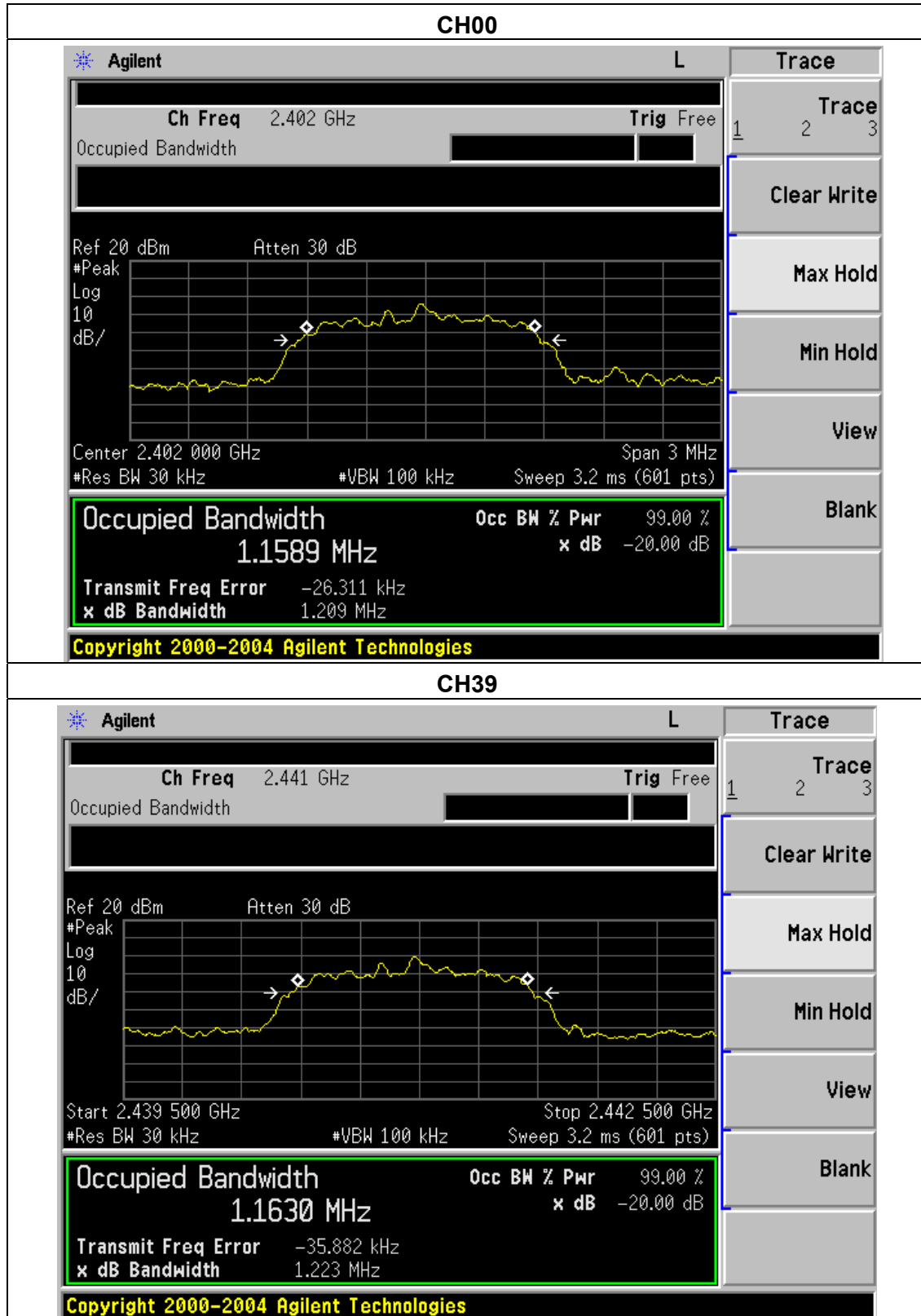
GFSK

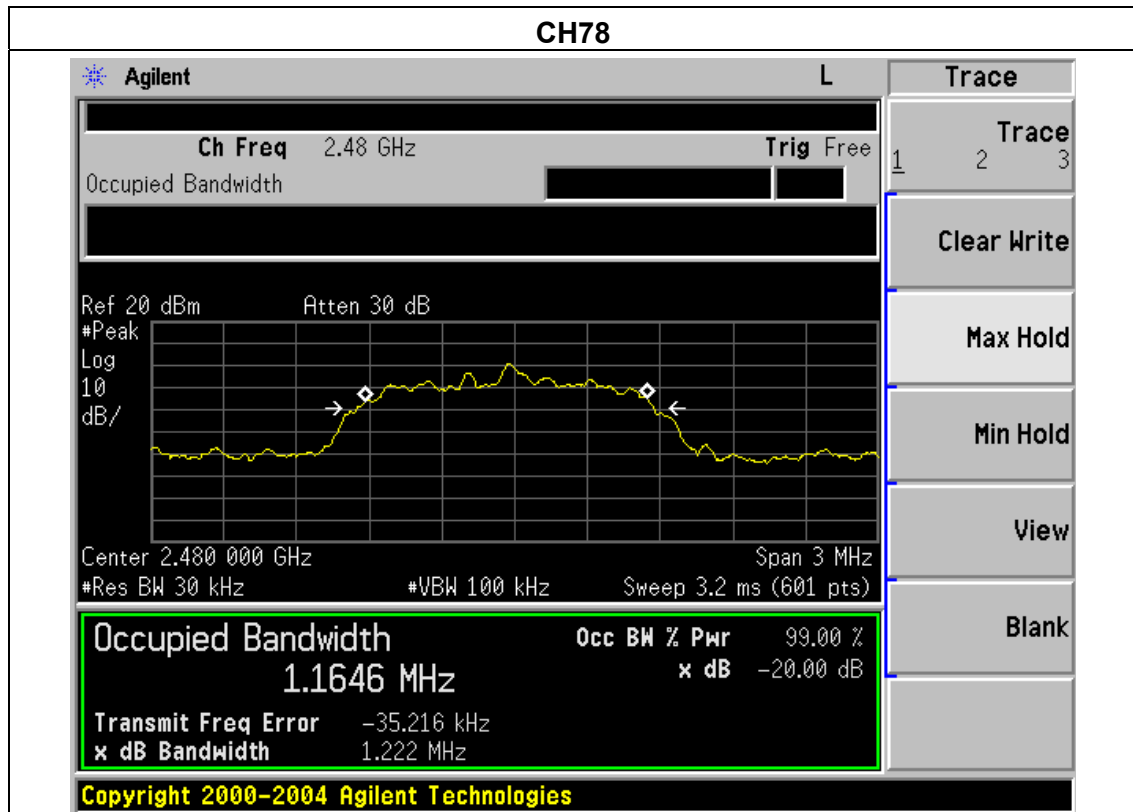




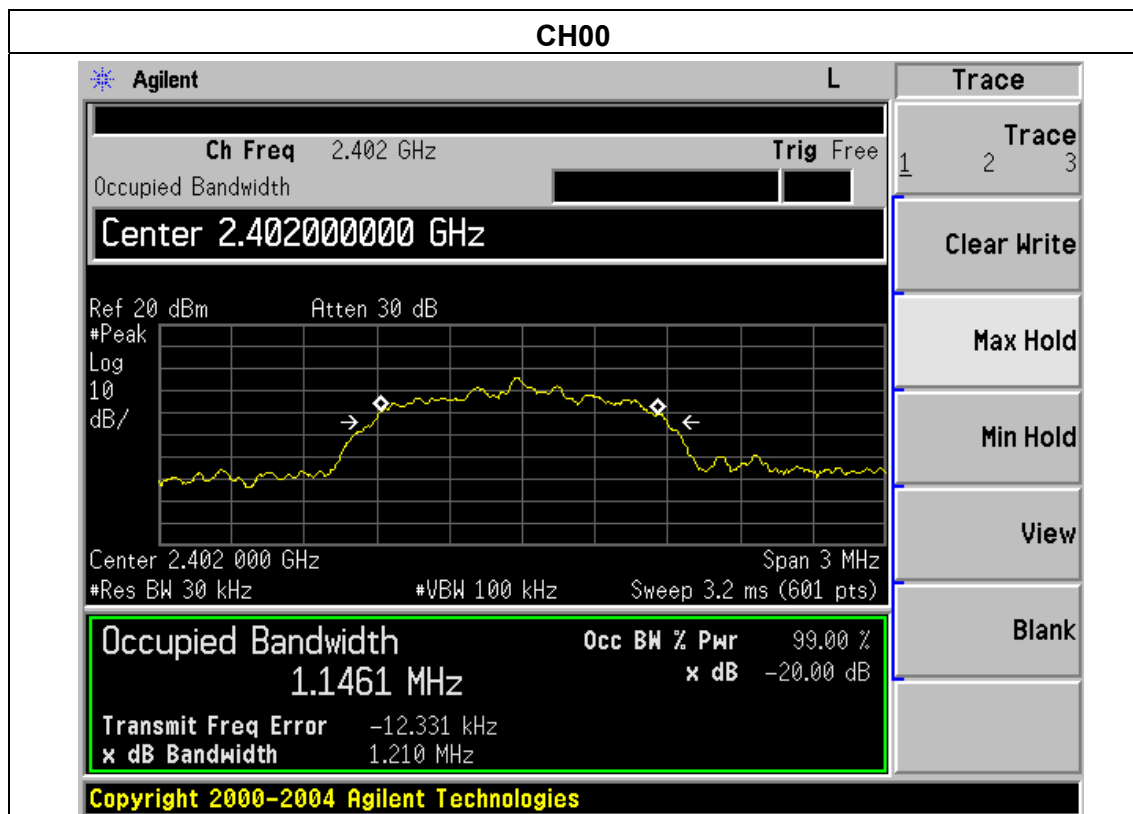


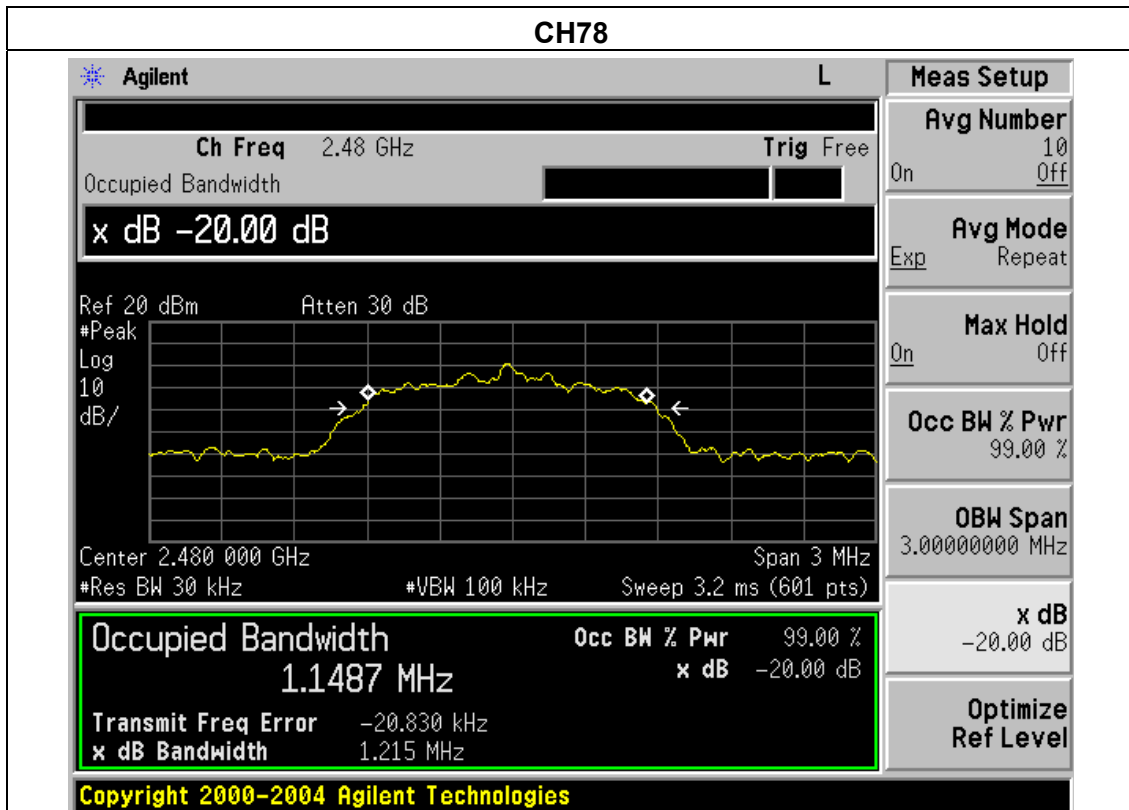
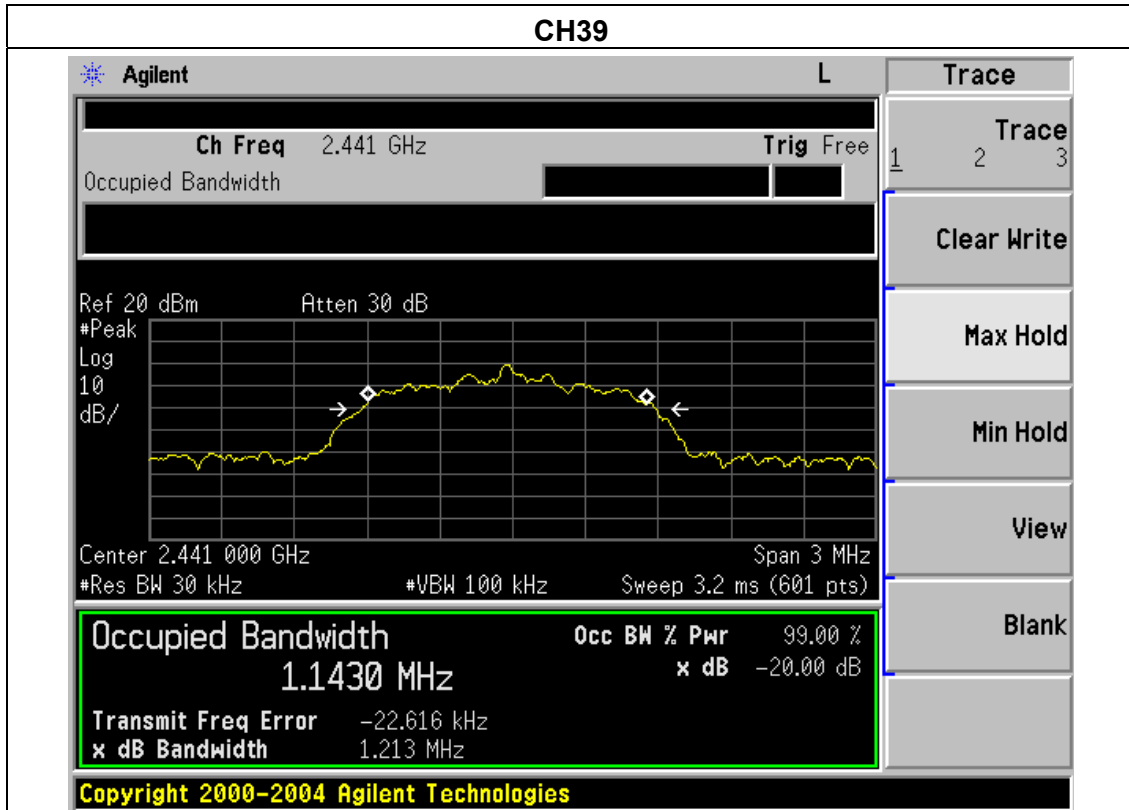
PI/4 DPSK





8DPSK







5. BANDWIDTH OF FREQUENCY BAND EDGE

APPLICABLE STANDARD

Emissions radiated outside of the specified frequency bands, except for harmonics, shall be attenuated by at least 50 dB below the level of the fundamental or to the general radiated emission limits in §15.209, whichever is the lesser attenuation.

TEST PROCEDURE

- a. The measuring distance of at 3 m shall be used for measurements at frequency up to 25GHz. For frequencies above 1GHz, any suitable measuring distance may be used.
- b. The EUT was placed on the top of a rotating table 1.5 meters above the ground at a 3 meter open area test site. The table was rotated 360 degrees to determine the position of the highest radiation.
- c. The height of the equipment or of the substitution antenna shall be 1.5 m; the height of the test antenna shall vary between 1 m to 4 m. Both horizontal and vertical polarizations of the antenna are set to make the measurement.
- d. If the Peak Mode measured value compliance with and lower than Quasi Peak Mode Limit, the EUT shall be deemed to meet QP Limits and then no additional QP Mode measurement performed.
- e. For the actual test configuration, please refer to the related Item –EUT Test Photos.
- f. For the radiated emission test above 1GHz:
Place the measurement antenna away from each area of the EUT determined to be a source of emissions at the specified measurement distance, while keeping the measurement antenna aimed at the source of emissions at each frequency of significant emissions, with polarization oriented for maximum response.
The measurement antenna may have to be higher or lower than the EUT, depending on the radiation pattern of the emission and staying aimed at the emission source for receiving the maximum signal. The final measurement antenna elevation shall be that which maximizes the emissions. The measurement antenna elevation for maximum emissions shall be restricted to a range of heights of from 1 m to 4 m above the ground or reference ground plane.
- g Spectrum Setting : RBW= 1MHz, VBW=3MHz, Sweep time = Auto for peak
RBW= 1MHz, VBW=10Hz, Sweep time = Auto for average

Note:

Both horizontal and vertical antenna polarities were tested and performed pretest to three orthogonal axis. The worst case emissions were reported

5.1 DEVIATION FROM STANDARD

No deviation.

5.2 TEST SETUP

5.3 EUT OPERATION CONDITIONS

The EUT tested system was configured as the statements of 2.4 Unless otherwise a special operating condition is specified in the follows during the testing.



5.4 TEST RESULTS

| | | Frequency (MHz) | Antenna polarization (H/V) | Emission (dBuV/m) | Band edge Limit (dBuV/m) | | Result |
|-----------|-----------|-----------------|----------------------------|-------------------|--------------------------|-------|--------|
| | | | | PK | PK | AV | |
| GFSK | Hopping | <2400 | H | 50.60 | 74.00 | 54.00 | Pass |
| | | <2400 | V | 49.84 | 74.00 | 54.00 | Pass |
| | | >2483.5 | H | 49.71 | 74.00 | 54.00 | Pass |
| | | >2483.5 | V | 50.28 | 74.00 | 54.00 | Pass |
| | Unhopping | <2400 | H | 49.90 | 74.00 | 54.00 | Pass |
| | | <2400 | V | 49.64 | 74.00 | 54.00 | Pass |
| | | >2483.5 | H | 49.94 | 74.00 | 54.00 | Pass |
| | | >2483.5 | V | 50.38 | 74.00 | 54.00 | Pass |
| PI/4 DPSK | Hopping | <2400 | H | 50.13 | 74.00 | 54.00 | Pass |
| | | <2400 | V | 49.61 | 74.00 | 54.00 | Pass |
| | | >2483.5 | H | 49.48 | 74.00 | 54.00 | Pass |
| | | >2483.5 | V | 50.14 | 74.00 | 54.00 | Pass |
| | Unhopping | <2400 | H | 49.37 | 74.00 | 54.00 | Pass |
| | | <2400 | V | 49.01 | 74.00 | 54.00 | Pass |
| | | >2483.5 | H | 48.93 | 74.00 | 54.00 | Pass |
| | | >2483.5 | V | 48.68 | 74.00 | 54.00 | Pass |
| 8DPSK | Hopping | <2400 | H | 50.43 | 74.00 | 54.00 | Pass |
| | | <2400 | V | 49.92 | 74.00 | 54.00 | Pass |
| | | >2483.5 | H | 49.79 | 74.00 | 54.00 | Pass |
| | | >2483.5 | V | 50.44 | 74.00 | 54.00 | Pass |
| | Unhopping | <2400 | H | 49.68 | 74.00 | 54.00 | Pass |
| | | <2400 | V | 49.31 | 74.00 | 54.00 | Pass |
| | | >2483.5 | H | 49.22 | 74.00 | 54.00 | Pass |
| | | >2483.5 | V | 48.98 | 74.00 | 54.00 | Pass |

If the PK measured levels comply with average limit, then the average level were deemed to comply with average limit.



6. ANTENNA REQUIREMENT

6.1 STANDARD REQUIREMENT

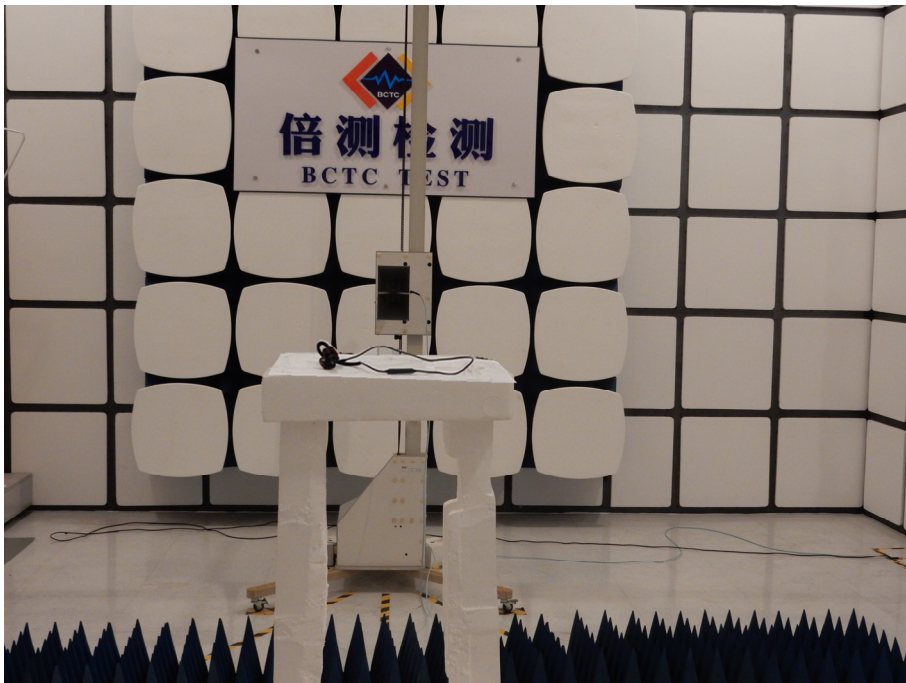
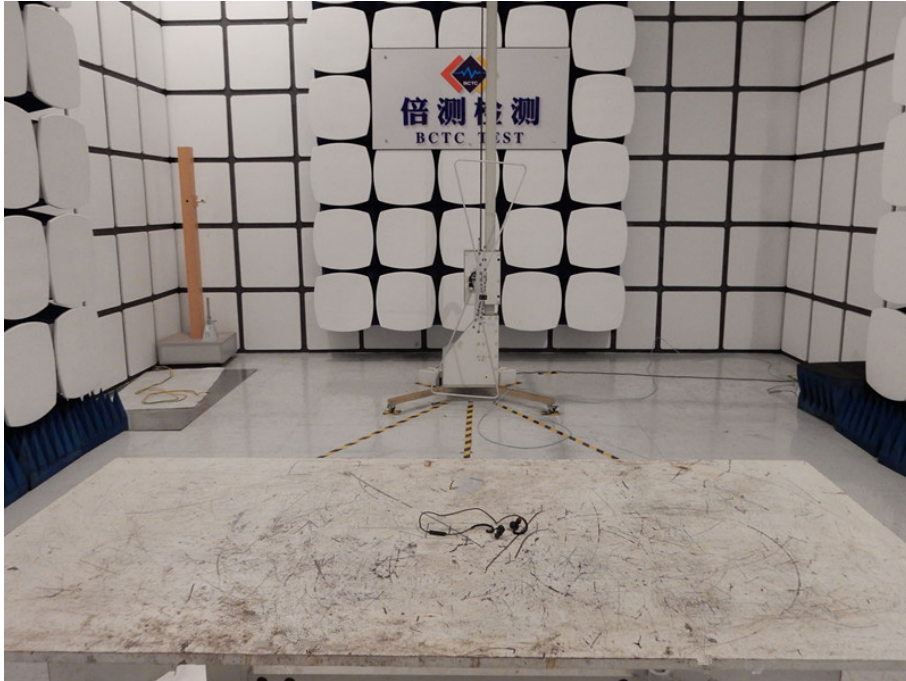
15.203 requirement: For intentional device, according to 15.203: an intentional radiator shall be designed to ensure that no antenna other than that furnished by the responsible party shall be used with the device.

6.2 EUT ANTENNA

The EUT antenna is PCB antenna. It complies with the standard requirement.

7. EUT TEST PHOTO

Radiated Measurement Photos



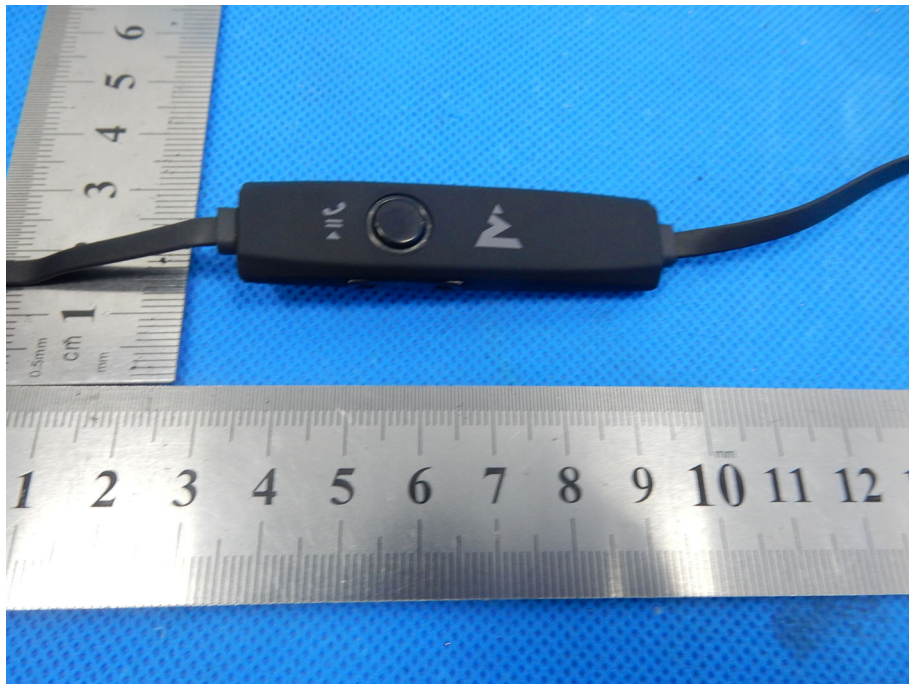
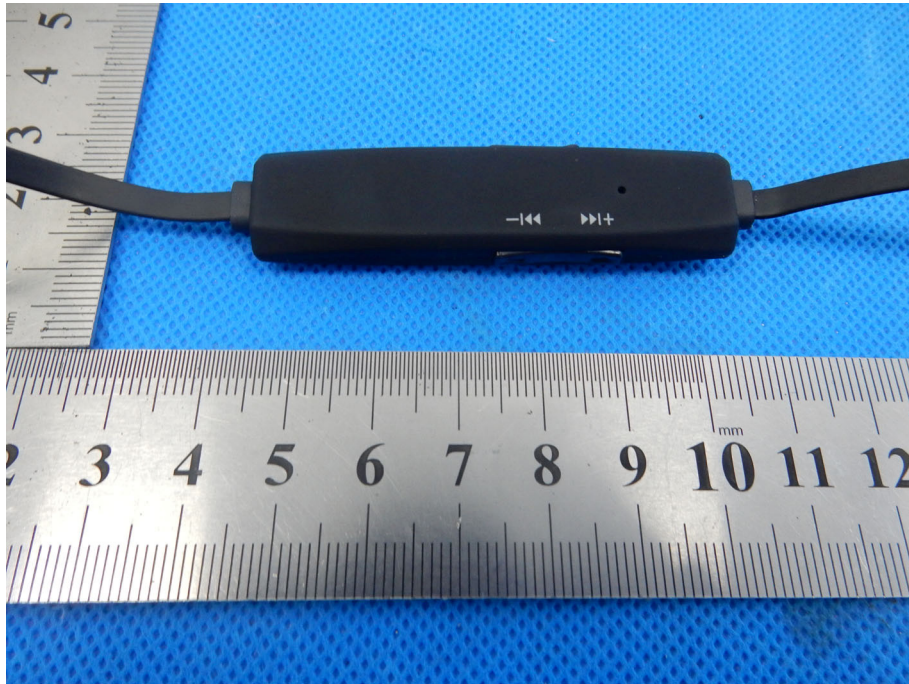


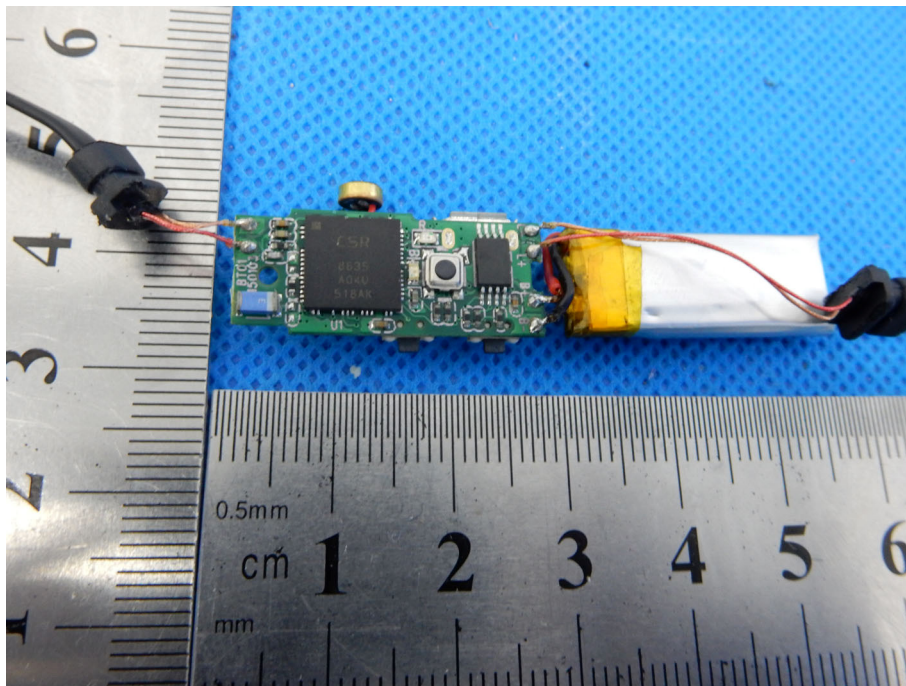
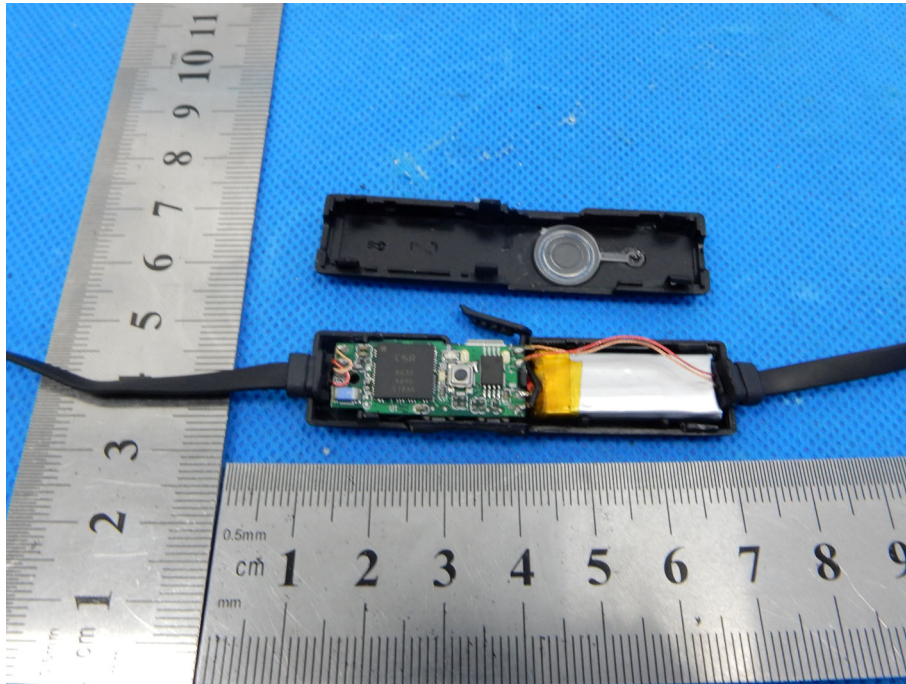
Conducted Emission

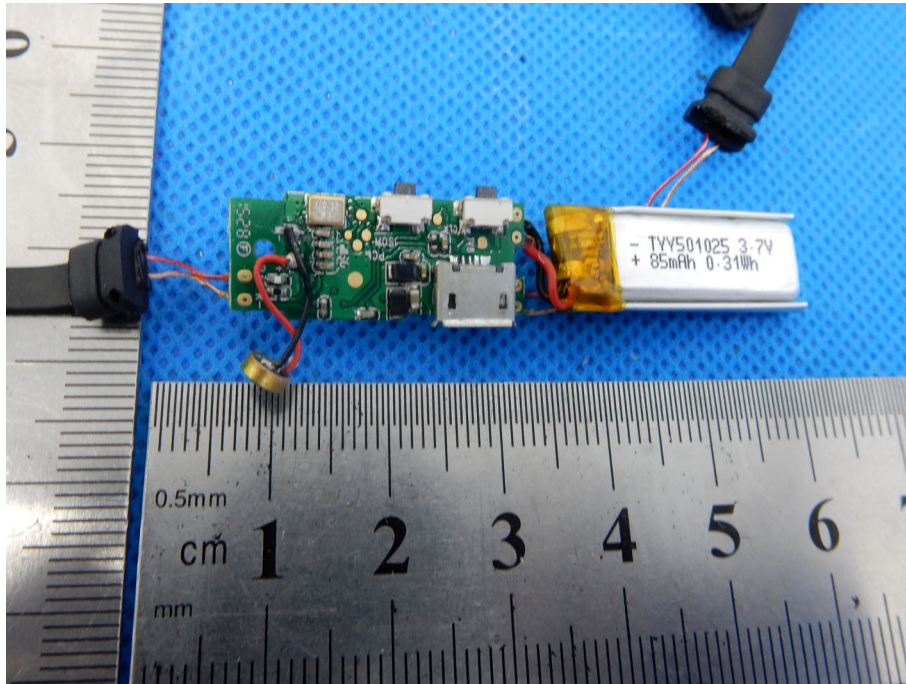


8. PHOTO OF THE EUT









---END---