

This device complies with Part 15 of the FCC Rules. Operation is subject to the following two conditions:

- (1) This device may not cause harmful interference,
- (2) This device must accept any interference received, including interference that may cause undesired operation.

#### CAUTION

Changes or Modifications not expressly approved by the party responsible could void the user's authority to operate this device.

This equipment has been tested and found to comply with the limits for a Class B digital device, pursuant to Part 15 of the FCC Rules. These limits are designed to provide reasonable protection against harmful interference in a residential installation. This equipment generates, uses and can radiate radio frequency energy and, if not installed and used in accordance with the instructions, may cause harmful interference to radio communications. However, there is no guarantee that interference will not occur in a particular installation. If this equipment does cause harmful interference to radio or television reception, which can be determined by turning the equipment off and on, the user is encouraged to try to correct the interference by one or more of the following measures:

- Reorient or relocate the receiving antenna.
  - Increase the separation between the equipment and receiver.
  - Connect the equipment into an outlet on a circuit different from that to which the receiver is connected.
  - Consult the dealer or an experienced radio/TV technician for help.
- This equipment complies with the FCC RF radiation exposure limits set forth for an uncontrolled environment. This equipment should be installed and operated with a minimum distance of 20 centimeters between the radiator and your body.

#### WARRANTY

Supersonic Inc. ("Supersonic") warrants this product to the original purchaser ONLY, to be free from defects in materials and workmanship under normal use, for ninety (90) DAYS from the date of original purchase. Proof of purchase (receipt) required. Please visit <https://www.supersonicinc.com/pages/warranty> for additional information.

#### USB FLASH CARD PLAYBACK

NOTE: Make sure your music Playlist is in MP3 Format for best Sound Mode

Insert USB Flash Drive and Press "MODE" Button until it switches to USB. It will detect it automatically, and begin playing your first MP3 song at the top of your Playlist.

Press [ ] Button to Pause/Continue playing music  
Press [ ] Button to go to next song  
Press [ ] Button to go to previous song

Use USB Version 2.0 or later



#### SD/MMC PLAYBACK

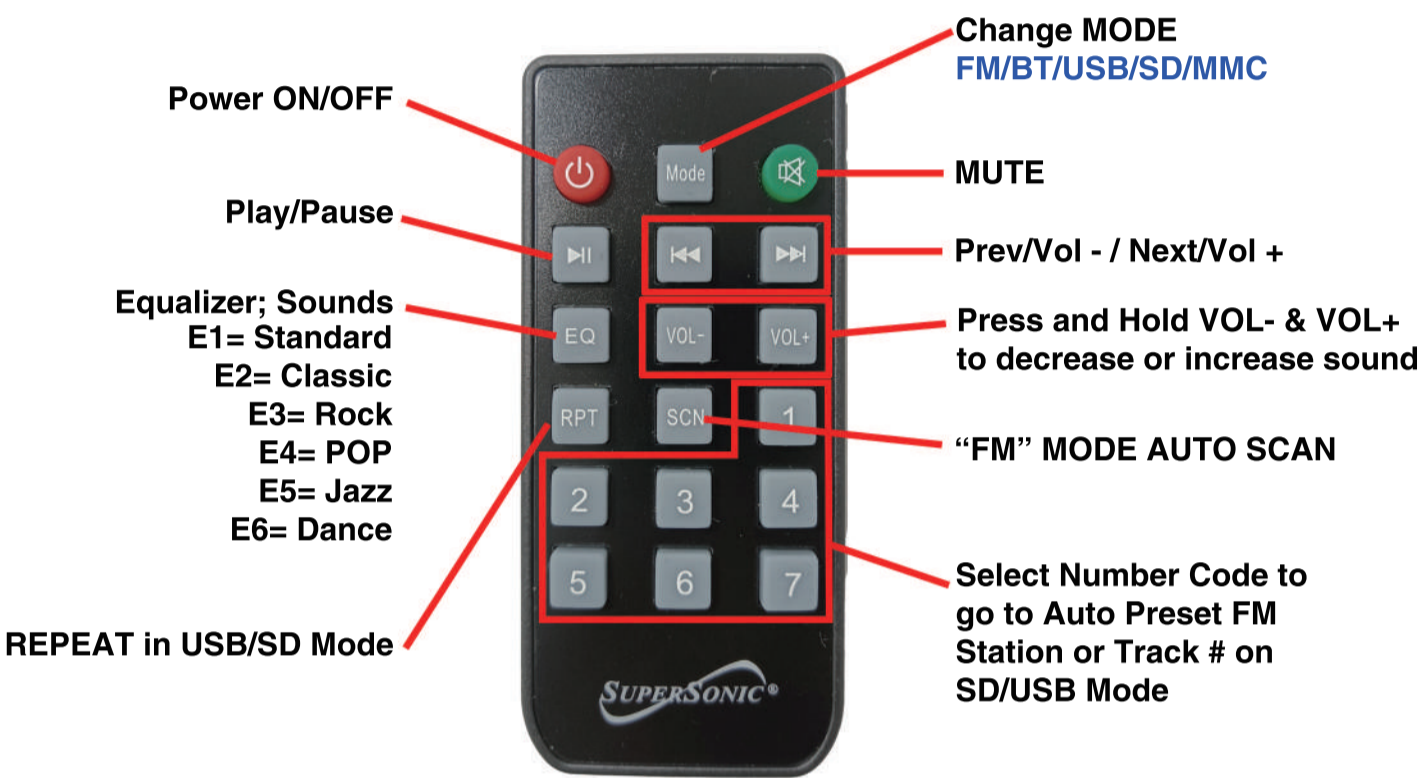
Insert SD Card/MMC and Press "MODE" Button until it switches to SD. It will detect it automatically, and begin playing your first MP3 song at the top of your Playlist.

Press [ ] Button to Pause/Continue playing music  
Press [ ] Button to go to next song  
Press [ ] Button to go to previous song

Use Micro SD type 4 or later



#### REMOTE FUNCTIONS



Copyright ©2016 Supersonic INC. All rights reserved.  
Features and specifications are subject to change without prior notification



## INSTALLATION MANUAL

### Bluetooth® Multimedia Speaker System

Bluetooth®  
SC-1126BT

#### FRONT PANEL :



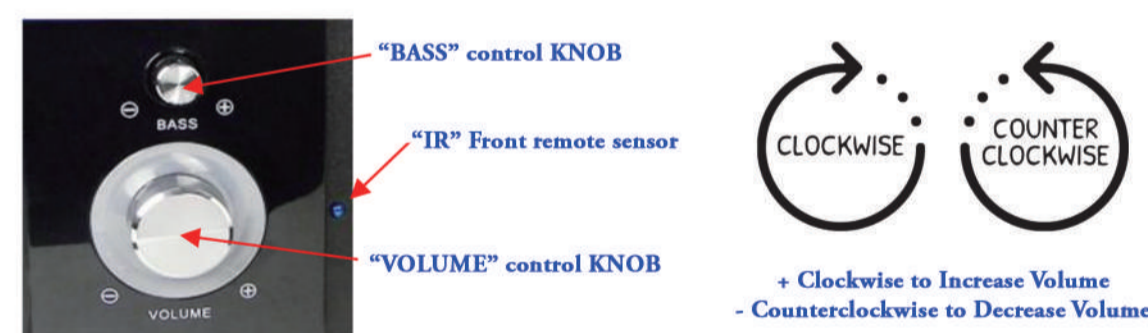
#### THE MAIN TECHNOLOGY SPECIFICATIONS

Model .....	SC-1126BT
Speaker .....	.4INCH + 2.25INCH*2
RMS .....	15W + 5W*2
Frequency Response .....	50Hz - 18KHz
S/N .....	≤ 75dB
Input Sensitivity .....	350mV
Degree of Dissociation .....	≤ 45dB
Voltage .....	AC~110V/60Hz
Bluetooth Name .....	SC-1126BT
Code .....	0000

#### CAUTION

1. The apparatus shall not be exposed to dripping or splashing and that no objects filled with liquids, such as vases, shall be placed on the apparatus.
2. The mains plug is used as the disconnect device, the disconnect device shall remain readily operable.

#### FRONT VIEW



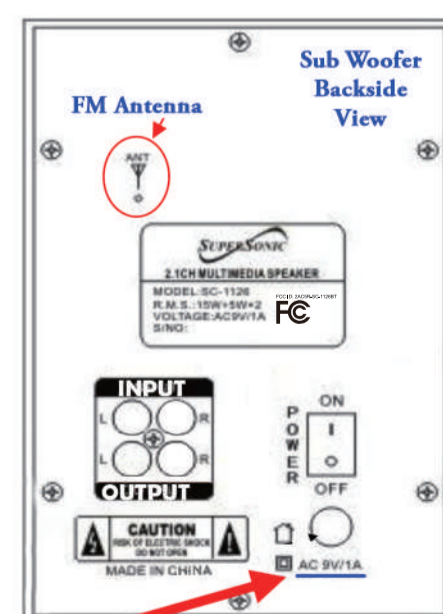
## SET UP SPEAKERS & WOOFERS

Please Follow the steps below.

#### COMPOSITION

Wooden Cabinet For Sub-Woofer	1 pcs
Satellite Speakers	2 pcs
Signal Input Cable	1 pcs
Operation Manual	1 pcs
Remote Control	1 pcs

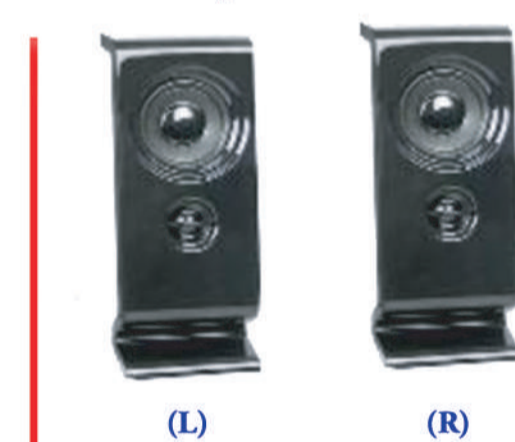
#### THE SETTING AND CONNECTION CHART



STEP 1:  
Connect AC/DC Cord



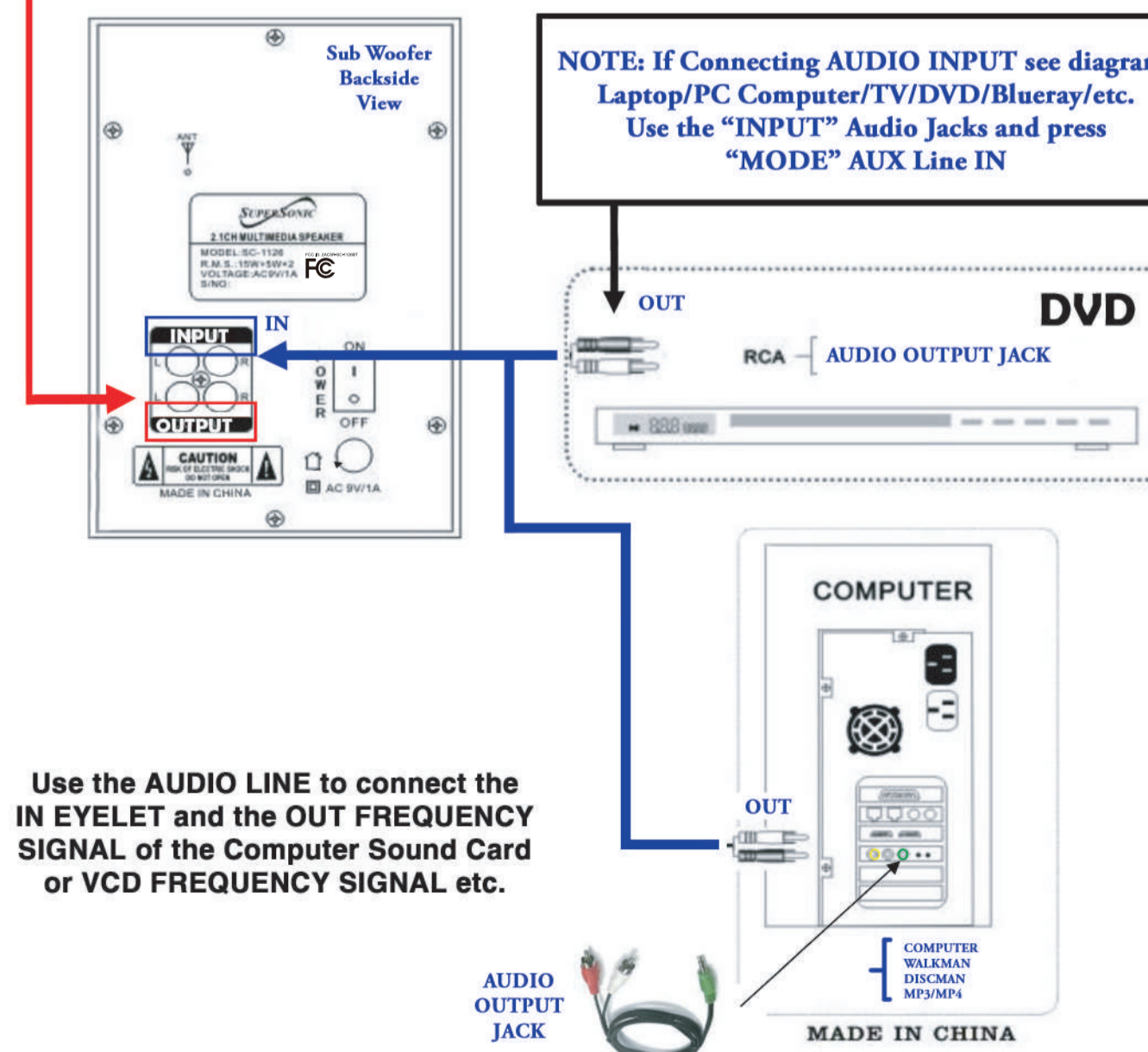
STEP 2:  
Connect L & R Speakers to "OUTPUT" Jacks



STEP 3:  
Power ON

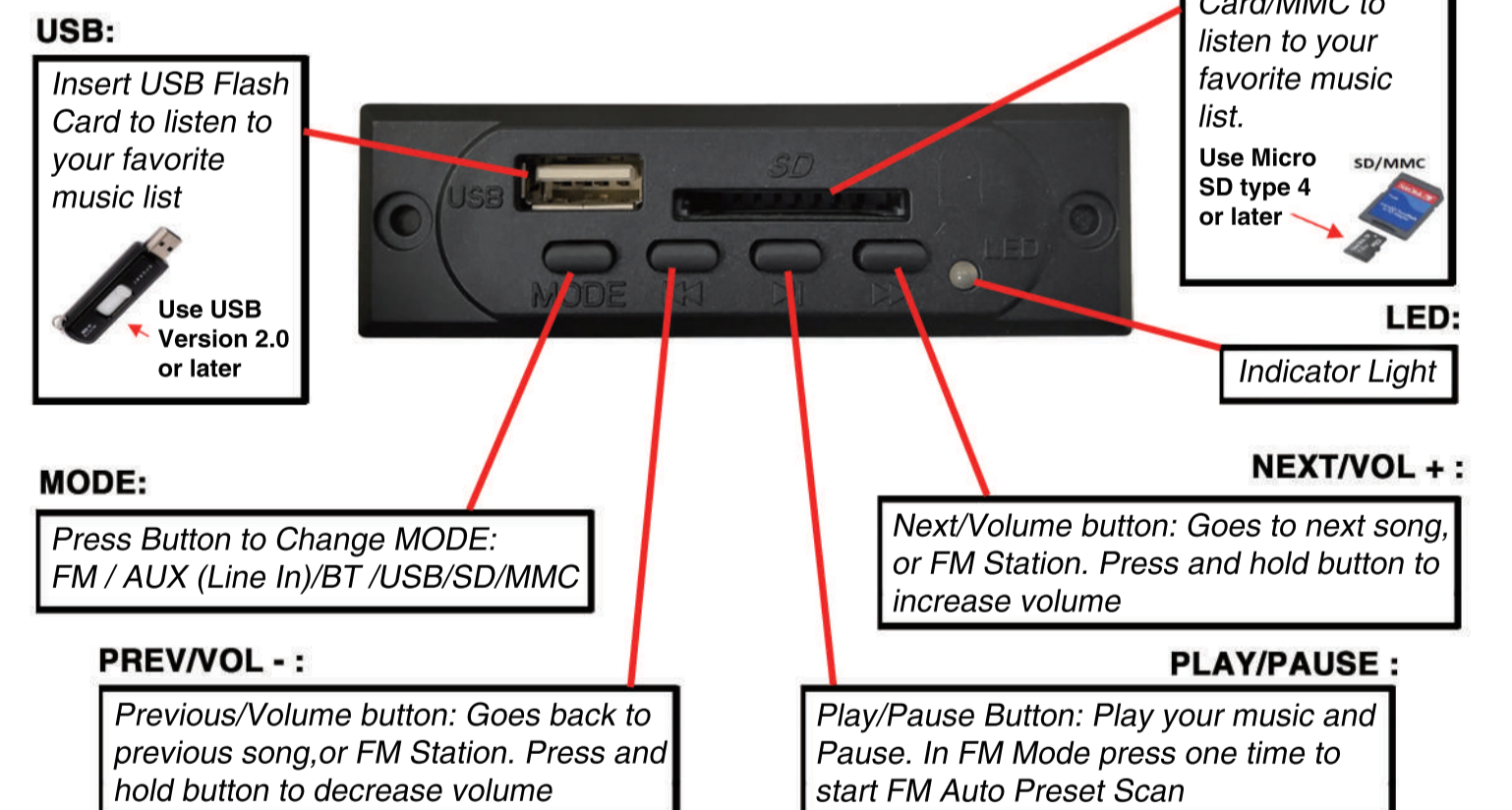


NOTE: If Connecting AUDIO INPUT see diagram; Laptop/PC Computer/TV/DVD/Bluray/etc. Use the "INPUT" Audio Jacks and press "MODE" AUX Line IN



Use the AUDIO LINE to connect the IN EYELET and the OUT FREQUENCY SIGNAL of the Computer Sound Card or VCD FREQUENCY SIGNAL etc.

## FUNCTION GUIDE



#### BLUETOOTH FUNCTIONS

NOTE: To use the Remote Control make sure to remove the plastic battery cover.

Press "MODE" Button until the LED Light turns BLUE. You will hear a Beep Sound. Go to smartphone or Bluetooth Device and turn on Bluetooth Signal. Make sure you select "Allow Device to Connect" on your smartphone or Bluetooth Device, and press SEARCH. "SC-1126BT" will display on your Device, then press "PAIR" ... Device will pair and you are connected. No Password should be required but if it does: "0000". Make sure you increase (raise) the volume on your smartphone to have good sound.

#### RADIO FUNCTIONS

NOTE: Pull out Antenna Wire straight up, before you start to tune in FM Stations.

FM Function:  
Press "MODE" Button until it switches to FM Mode.  
Press [ ] Button to begin Auto Scan for FM Stations  
Will store (preset) and assign your FM Stations automatically  
Press one time [ ] Button to go to next FM Station  
Press one time [ ] Button to go to previous FM Station

NOTE: Will not Preset FM Stations Manually Will only Preset Automatically from CH01-CH28 and will assign each Strong Frequency FM Station.