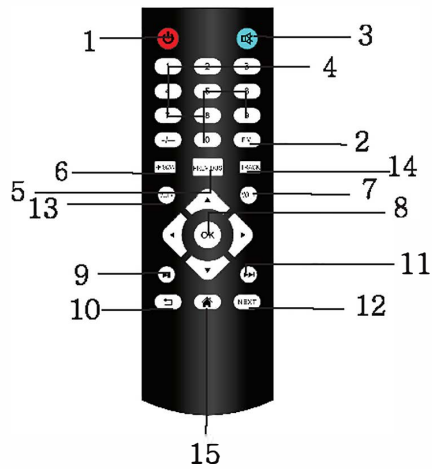
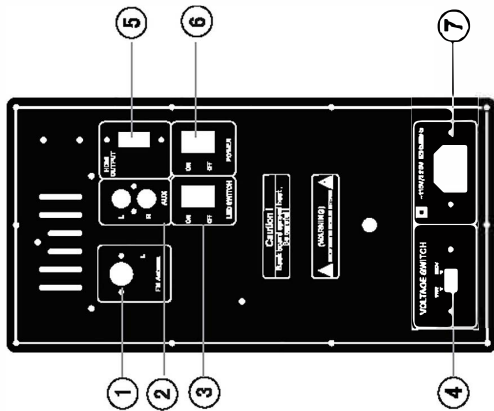


REMOTE CONTROL FUNCTION



- 1.STANDBY: Make the unit to be standby mode.
- 2.FM
- 3.MUTE
- 4.KEY Number for selecting the certain track
- 5.PREVIOUS
6. FM SCAN
- 7.VOL+
- 8.OK
- 9.Play/Pause
- 10.Retreat key
- 11.Control next key
- 12.Next
- 13.VOL-
14. TRACK
- 15.return key

PANEL OPERATION EXPLANATION



1. Radio FM antenna ;
2. Audio DVD or AUX input ;
3. LED switch ;
4. Voltage 120V/240V switch ;
5. HDMI output ;
6. Power on/off ;
7. AC ~120V/240V 50Hz/60Hz input

Warranty

Basic Warranty Statement

Supersonic Inc. ("Supersonic") warrants this product to the original purchaser ONLY, to be free from defects in materials and workmanship under normal use, for ninety (90) DAYS from the date of original purchase. Proof of purchase (receipt) required.

Please visit <http://www.supersonicinc.com/warranty> for additional information.

OPERATION MANUAL

IQ sound®



IQ-4922DJWK

Carefully read operating manual to operate this unit properly, and keep this manual handy for further reference.

FUNCTION DESCRIPTION

● OPERATION INSTRUCTION FOR KARAOKE & WIRELESS MICROPHONE

1. Insert the microphone plug into the microphone input MIC2.
2. Adjust the microphone volume knob MIC VOL for proper volume. Then adjust the echo depth to the proper position. Now you can start the karaoke.
3. Open wireless MIC "on & off" button, Adjust the microphone volume knob MIC VOL for proper volume. and adjust the echo depth to the proper position. The you can start the wireless Microphone.

● BT Connection

1. Please press the "MODE" button to start the BT connection. This will turn on the BT flashing LED light on the control panel.
2. Your unit will now be ready to pair with your mobile device via BT. From your mobile device scan for "bt-speaker". The password for connection is "0000" and once you have paired your device to the DJ system, the LED flashing light will become solid.
3. You can control the volume and tracks from the unit's control panel or from your external BT enabled device.

● Listening to the FM Radio from the Speaker

1. To select FM use "MODE" button on unit main panel or from remote control or from remote control press "FM".
2. From the unit control panel. Long press ► to scan for station or press ◀◀ / ▶▶ to manually access preset stations up or down.
3. From remote control press "SCAN" to scan for FM frequency or press ◀◀ / ▶▶ to manually select preset station up or down.
4. "FM Antenna" to be used for better reception for FM station.

● Using Microphone

1. When using Microphone—plug your microphone into the microphone jack on unit main control panel.
2. Use the MIC VOL knob to control the voice level of the microphone
3. Use the "ECHO" knob to control microphone echo.

● Using Aux(LINE IN 3.5mm)

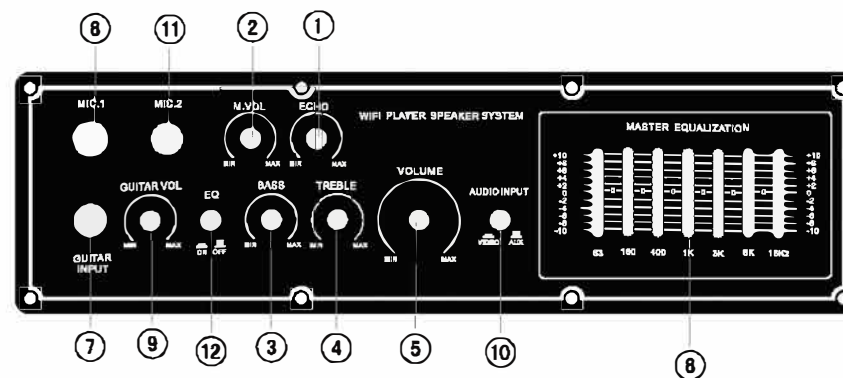
1. To select Aux use "MODE" button on unit main panel or from remote control "LINE" will show on display
2. Disconnect USB, SD Microphone while using Aux.

● Using Guitar Jack.

1. When using Guitar—plug your guitar into the guitar jack on unit main control panel.
2. Use the Guitar VOL knob to control the volume level of the Guitar.

"BASS" & "TREBLE" on unit control panel can be used to adjust sound when using MICRO SD, USB, FM. "EQ" button on unit control panel or remote control can be used to adjust sound effect to preset levels.

PANEL FUNCTION



1. Echo control
2. MIC volume control
3. Bass volume
4. Treble volume
5. Volume
6. MIC1 jack
7. Guitar jack
8. EQ control
9. Guitar volume control
10. Audio input key
11. MIC2 jack
12. EQ

MAIN TECHNICAL PARAMETER

Output power (RMS) :	80W
Output Impedance:	4 (ohm)
S/N:	76dB
Input sensitivity:	500mV
Frequency response:	40Hz-20kHz
Rating voltage:	~ 120V/240V 50/60Hz

FCC Caution:

This device complies with part 15 of the FCC Rules. Operation is subject to the following two conditions: (1) This device may not cause harmful interference, and (2) this device must accept any interference received, including interference that may cause undesired operation.

Any Changes or modifications not expressly approved by the party responsible for compliance could void the user's authority to operate the equipment.

Note: This equipment has been tested and found to comply with the limits for a Class B digital device, pursuant to part 15 of the FCC Rules. These limits are designed to provide reasonable protection against harmful interference in a residential installation. This equipment generates uses and can radiate radio frequency energy and, if not installed and used in accordance with the instructions, may cause harmful interference to radio communications. However, there is no guarantee that interference will not occur in a particular installation. If this equipment does cause harmful interference to radio or television reception, which can be determined by turning the equipment off and on, the user is encouraged to try to correct the interference by one or more of the following measures:

- Reorient or relocate the receiving antenna.
- Increase the separation between the equipment and receiver.
- Connect the equipment into an outlet on a circuit different from that to which the receiver is connected.
- Consult the dealer or an experienced radio/TV technician for help.

This equipment complies with FCC radiation exposure limits set forth for an uncontrolled environment. This equipment should be installed and operated with minimum distance 20cm between the radiator & your body.