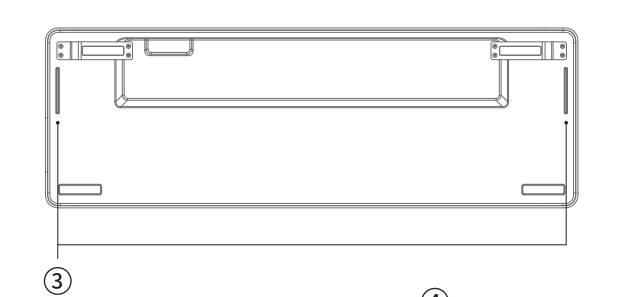
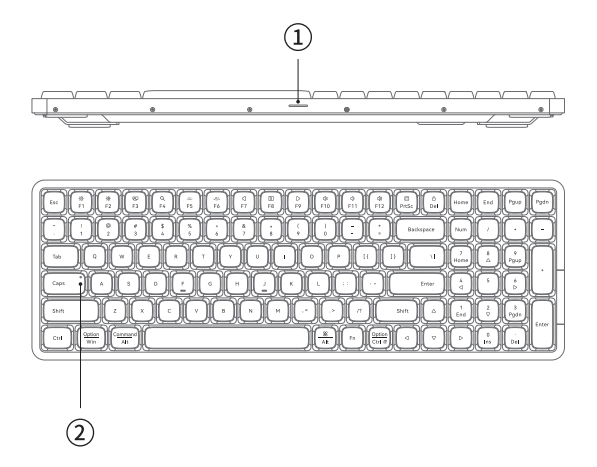


## FLOW 小顺 小顺 100 双模矮轴机械键盘 FLOW 100-Key Dual Mode Low Profile Mechanical Keyboard

**产品规格**  
按键: 100键, 可插拔机械轴  
组合功能键: 15个  
材 质: 主体铝合金, 键帽PBT  
接 口: Type-C  
模 式: 有线/蓝牙  
蓝牙名称: Flow100@Lofree  
尺 寸: 373x126x22mm

**产品图解**



① 电量指示灯  
充电状态为白灯呼吸, 充满白灯常亮  
电量低于20%, 电量指示灯快呼吸  
电量低于5%电量指示灯快闪至关机

② 大小写指示灯/状态指示灯 (白蓝灯)  
• 大小写状态指示 (白灯)  
白灯常亮表示大写模式开启  
白灯熄灭表示大写模式关闭  
• 蓝牙配对指示 (蓝灯)  
自动蓝牙配对时, 蓝灯慢闪1分钟,  
连接成功后常亮3s, 随后恢复此前状态  
切换设备时, 状态指示灯快闪3s,  
连接成功后常亮3s, 随后恢复此前状态

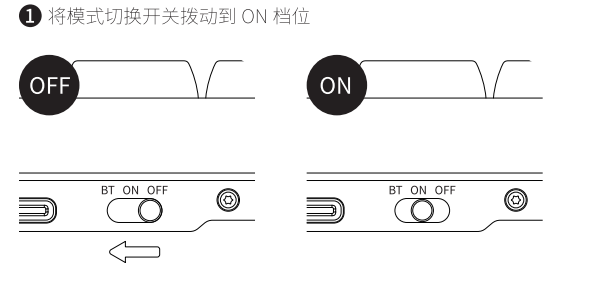
蓝牙回连时, 回连过程蓝灯持续闪烁  
回连成功后蓝灯常亮3s, 随后恢复此前状态

③ 背景灯  
常亮/呼吸/关闭  
背景灯颜色切换

④ 模式切换开关  
OFF: 关闭/有线模式/BT-蓝牙模式  
⑤ Type-C 接口  
有线连接接口/充电接口

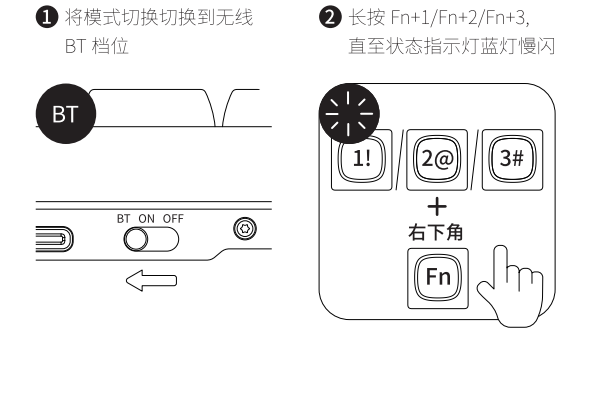
**详细操作**

**有线连接模式:**



② 取出本产品附带 Type-C 数据线将键盘与设备进行连接, 即可完成有线连接模式

**蓝牙连接模式:**

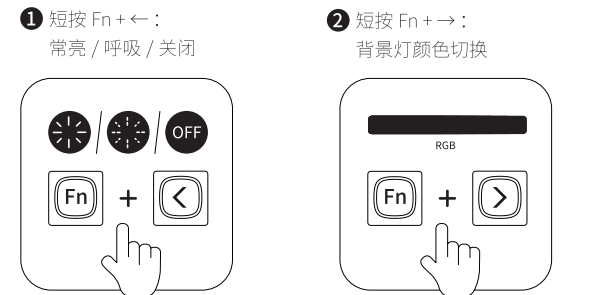


③ 打开设备端蓝牙功能, 在蓝牙设备列表中查找并点击连接  
“Flow100@Lofree”

④ 状态指示灯常亮 3S 后熄灭表示蓝牙模式连接成功

③ 短按 Fn+1/ Fn+2/ Fn+3 为切换蓝牙连接设备

**背景灯使用方法:**



**系统切换**

Fn 右下角 Fn+N 为触发 windows/Android 对应系统功能键值  
右下角 Fn+M 为触发 Mac/iOS 对应系统功能键值

**组合功能键**

Fn + F1 ..... Del 为触发多功能键

功能标识	Mac	Windows
Fn+F1	亮度减小	亮度减小
Fn+F2	亮度增加	亮度增加
Fn+F3	多屏显示	多屏显示
Fn+F4	搜索	搜索
Fn+F5	背光降低	背光降低

Function Sign	Mac	Windows
Fn+F6	背光加亮	背光加亮
Fn+F7	上一曲	上一曲
Fn+F8	播放/暂停	播放/暂停
Fn+F9	下一曲	下一曲
Fn+F10	静音	静音
Fn+F11	音量减小	音量减小
Fn+F12	音量增加	音量增加
Fn+Opt/Ctrl	/	菜单键
Fn+Printsc	/	自动系统计算锁
Fn+Del	/	锁定

**产品中有毒物质的名称及含量**

有害物质	零部件					
	铅 (Pb)	汞 (Hg)	镉 (Cd)	六价铬 (Cr, VI)	多溴联苯 (PBB)	多溴二苯醚 (PBDE)
塑胶(料)件	0	0	0	0	0	0
电路板组件	0	0	0	0	0	0
硅胶(料)件	0	0	0	0	0	0
金属零件	0	0	0	0	0	0

本表格依据 SJ/T 11364 的规定编制。  
依据欧盟指令 2011/65/EU 及修订指令 2015/863/EU 进行判定。  
O: 表示该有害物质在该部件所有均质材料中的含量均在 GB/T26572 规定的限量要求以下。  
X: 表示该有害物质至少在该部件的某一均质材料中的含量超出 GB/T26572 规定的限量要求。

**环保使用期限:**  
表示指期限(十年), 电子电器产品中含有的有害物质在正常使用条件下不会发生外泄或突变, 用户使用该电子电器产品不会对环境污染或对其人身, 财产造成严重损害的期限。  
根据中国电子行业标准 SJ/T 11364-2014 和相关的中国法律法规, 本产品及其某些内部或外部组件上可能带有环保使用期限标识, 取决于组件和组件制造商, 产品及其组件上的使用期限标识可能有所不同, 组件上的使用期限标识优先于产品上任何与之相冲突的或不同的环保使用标识。

**警告:**  
• 如果电池更换不当, 有可能存在泄漏或爆炸及造成人身伤害的危险。  
• 切勿让电池出现泄漏、变色、变形或出现任何其他异常的情况下使用。  
• 切勿让电池长时间处于放电或不使用状态。  
• 切勿使产品短路。  
• 电池寿命随使用情况而异, 已报废电池应根据当地法律进行弃置, 或丢弃在用于回收电子设备的垃圾桶中。  
• 若有任何液体不小心进入产品内部时, 请立即断开电源并移开此产品继续使用可能会引起起火或触电, 请及时联系代理商或最近的客服中心检查维修。

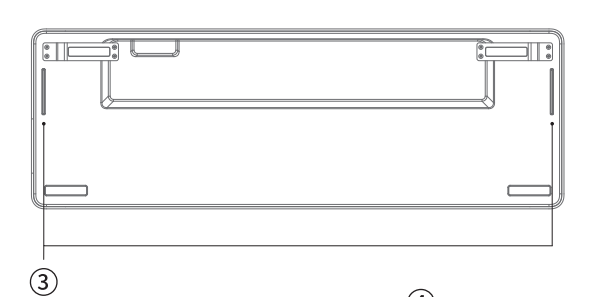
**Lofree**  
深圳市洛斐客文化有限公司  
Shenzhen Lofree Culture Co., Ltd.  
深圳市宝安区西乡街道宝源路1065号F518创客园B座202-202-F8, F518 Idea Land, 1065 Bao Yuan Road, Shenzhen

Service Hotline/服务热线: 400002083  
www.lofree.com.cn www.lofree.co  
@lofree @lofreeco @lofreeco

**EN**

**SPECIFICATIONS:**  
Number of keys: 100 (Hot-swappable Supported)  
Numbers of Multifunction Keys: 15  
Materials: Aluminum Alloy Unbody, PBT Keycaps  
Interface: Type-C  
Mode: Wired/Bluetooth  
Bluetooth Name: Flow100@Lofree  
Dimensions: 373 mm x 126 mm x 22 mm

**Diagram:**



① Battery Indicator  
Charging: Indicator on breathing white  
Charged: Indicator always on white  
Battery<20%, Indicator on breathing red  
Battery<5%, Indicator flashes till off

② Caps Lock/Status Indicator(White & Blue)  
• Caps Lock Indicator(White)  
Indicator white light enabled: Caps lock on  
Indicator white light disabled: Caps lock off  
• Bluetooth Pairing Indicator(Blue)  
During Bluetooth pairing, Indicator blinks slowly for 1 min;  
after success, Indicator keeps on for 3s

During device switching, Indicator flashes for 3s;  
after success, Indicator keeps on for 3s  
During Bluetooth reconnection, the indicator keeps blinking.  
After reconnection, the indicator keeps on for 3 seconds, and then recovers to the previous state

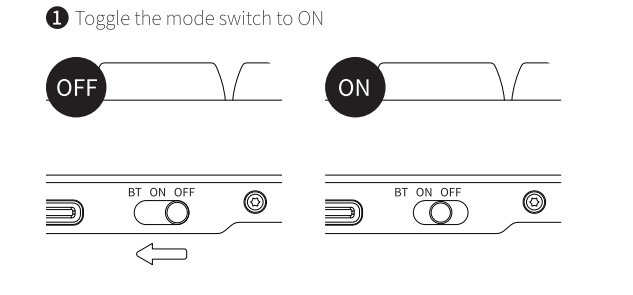
③ Ambient Light  
Steady/Breathe/Off  
Ambient Light Color Switch

④ Mode Switch  
OFF/ON/BT

⑤ Type C Interface  
Wired/Charge

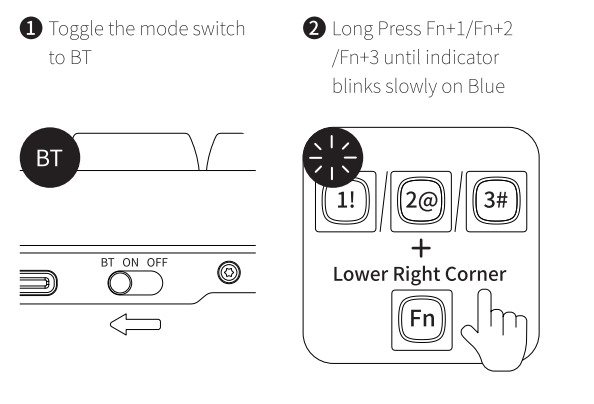
**Detailed Operation**

**Wired Connection:**



② Connect the keyboard to the device with attached Type C cable to complete the wired connection mode

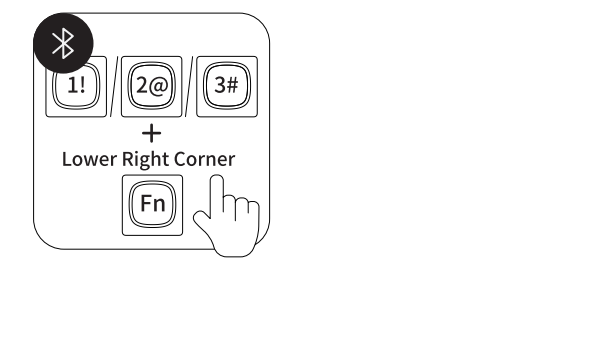
**Bluetooth Connection:**



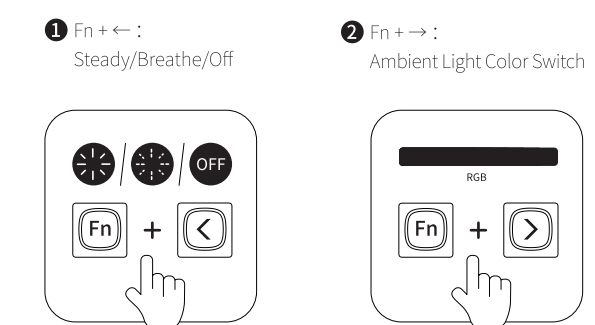
③ Find and pair "Flow100@Lofree" on your list of paired devices

④ Status Indicator: Indicator keeps on for 3s and turns off

③ Fn+1/Fn+2/Fn+3= Switch Bluetooth Device



**Use of Ambient Light:**



**System Switch**

Fn+N in the lower right corner is to trigger the corresponding system function key of windows/Android  
Fn+M in the lower right corner is to trigger the corresponding system function key of Mac/iOS

**Multifunction Keys**

Fn + F1 ..... Del =Multimedia Key

Function Sign	Mac	Windows
Fn+F1	Screen BR-	Screen BR-
Fn+F2	Screen BR+	Screen BR+
Fn+F3	Multi-Screen	Multi-Screen
Fn+F4	Search	Search
Fn+F5	Backlit-	Backlit-
Fn+F6	Backlit+	Backlit+
Fn+F7	Prev Song	Prev Song
Fn+F8	Play/Pause	Play/Pause
Fn+F9	Next Song	Next Song
Fn+F10	Mute	Mute
Fn+F11	VOL-	VOL-
Fn+F12	VOL+	VOL+
Fn+Opt/Ctrl	/	Menu
Fn+Printsc	/	Calculator
Fn+Del	/	Lock

**NAME AND CONTENT OF HAZARDOUS SUBSTANCES IN PRODUCT:**

Hazardal Elements	Hazardous substances					
	Lead (Pb)	Mercury (Hg)	Cadmium (Cd)	Hexavalent Chromium (Cr(VI))	Polybrominated Diphenyl Ether (PBDE)	Polybrominated Diphenyl Ether (PBDE)
Plastic Components	0	0	0	0	0	0
Circuit Board Assembly	0	0	0	0	0	0
Silicone Components	0	0	0	0	0	0
Type Parts	0	0	0	0	0	0

This table is prepared in accordance with the provisions of SJ/T 11364.  
The classification and marking of this product was performed in accordance with the EU directive 2011/65/EU and the revised directive 2015/863/EU.  
O: Indicates that the said hazardous substance contained in all the homogeneous materials for this component is below the limit requirement in GB/T 26572.  
X: Indicates that this hazardous substance contained in at least one of the homogeneous materials used for this part is above the limit requirement in GB/T 26572.

**ENVIRONMENTAL PROTECTION INSTRUCTIONS:**

The hazardous substances contained in the electronic parts of this product will not leak or change under normal use conditions for a period of ten years. During this same period, the electronic components of this product will not cause serious environmental pollution or serious damage to human health or property while the products are being used by the consumer. According to the Chinese electronic industry standard SJ/T 11364-2014 and related Chinese government regulations, this product and some of its internal or external components may have an environmentally friendly use period mark, depending on the component and component manufacturer, the mark lifespan on the product and its components may vary. The expiration date on the component takes precedence over any conflicted or different UFUP (abuse) on the product.

**Warning**  
If the battery is not replaced properly, there may be leakage or explosion and personal injury hazards. Do not use the battery when there is leakage, discoloration, deformation, or any other abnormality.  
• Do not leave the battery in a discharged or unused state for a long time.  
• Do not short-circuit the product  
• Battery life varies with usage. Used batteries should be disposed of in accordance with local laws or thrown away in trash cans for recycling electronic devices.  
• If any liquid accidentally enters the product, please immediately disconnect the power supply and remove the product. Continue to use the product may cause fire or electric shock. Please contact the agent or the nearest customer service center for inspection and maintenance.

**FCC Statement**

This equipment has been tested and found to comply with the limits for a Class B digital device, pursuant to Part 15 of the FCC Rules. These limits are designed to provide reasonable protection against harmful interference in a residential installation. This equipment generates uses and can radiate radio frequency energy and, if not installed and used in accordance with the instructions, may cause harmful interference to radio communications. However, there is no guarantee that interference will not occur in a particular installation.

If this equipment does cause harmful interference to radio or television reception, which can be determined by turning the equipment off and on, the user is encouraged to try to correct the interference by one or more of the following measures:  
- Reorient or relocate the receiving antenna.  
- Increase the separation between the equipment and receiver.  
- Connect the equipment into an outlet on a circuit different from that to which the receiver is connected.  
- Consult the dealer or an experienced radio/TV technician for help.

**This device complies with part 15 of the FCC Rules. Operation is subject to the following two conditions:**

(1) This device may not cause harmful interference, and (2) this device must accept any interference received, including interference that may cause undesired operation.

**Changes or modifications not expressly approved by the party responsible for compliance could void the user's authority to operate the equipment.**

**FCC Radiation Exposure Statement**

This equipment complies with FCC radiation exposure limits set forth for an uncontrolled environment. This transmitter must not be co-located or operating in conjunction with any other antenna or transmitter.