


 10.35mm

mobity
CONNECTED MEDIA SOLUTIONS

Need more info?
www.mobityconnect.com

© 2014 by MobiTV, Inc. All rights reserved

MobiTV Connect is a trademark of MobiTV, Inc. The Wi-Fi Certified™ logo is a certification mark of the Wi-Fi Alliance®. HDMI and the HMDI logo are trademarks or registered trademarks of HDMI LLC. All other logos and trademarks herein not owned by MobiTV, Inc. are the property of their respective owners.

4 in x 4 in

mobity
C O N N E C T™
PRODUCT GUIDE

Contents

4 What You'll Find in the Box

5 Setting Up MobiTV Connect

8 Tips and Troubleshooting

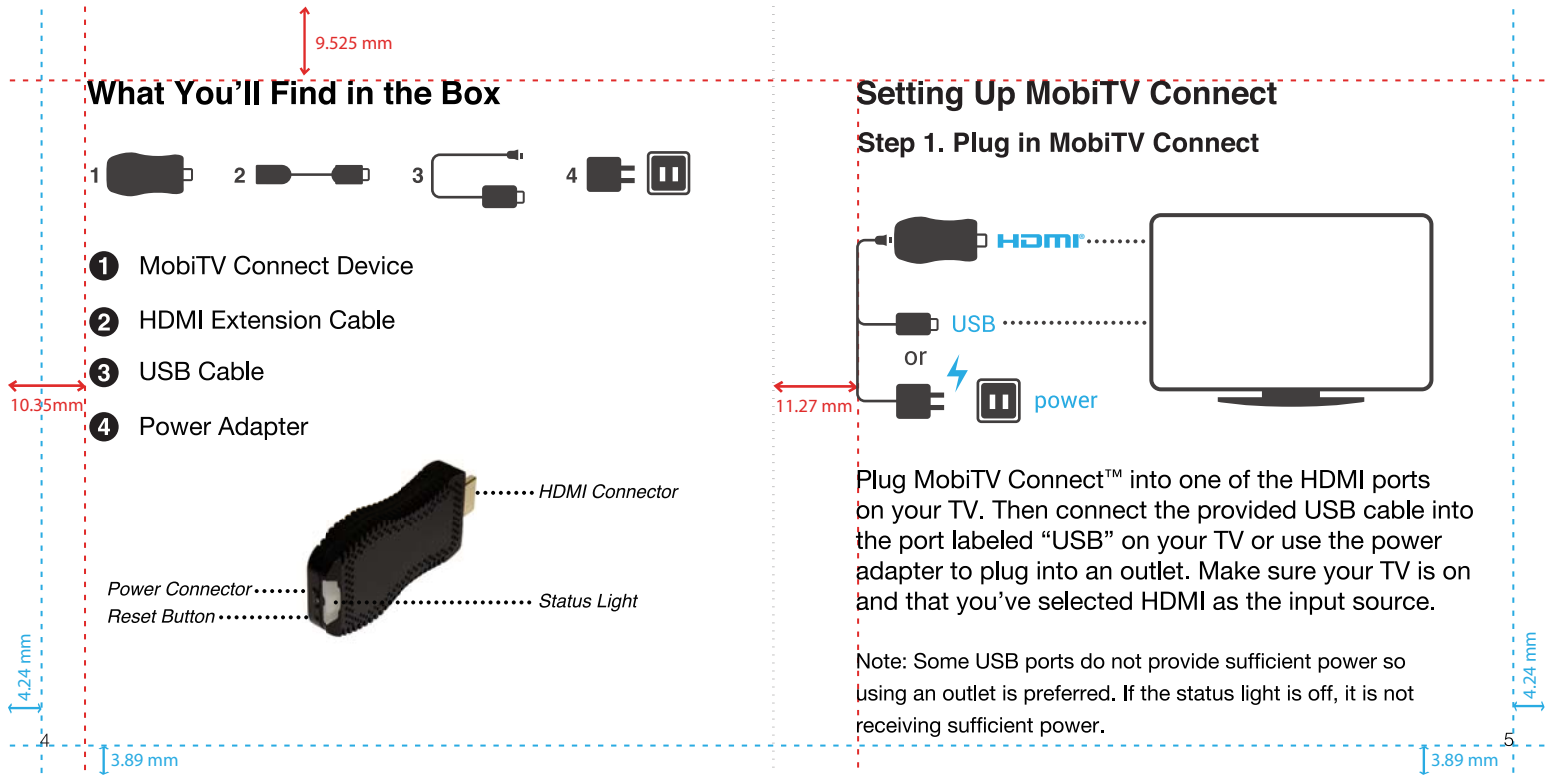
9 Warranty and Warnings

9.78 mm

11.27 mm

3.89 mm

4.24 mm



What You'll Find in the Box



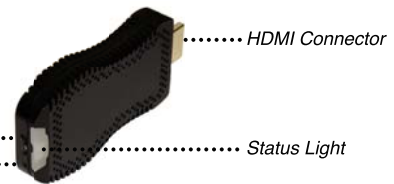
- 1 MobiTV Connect Device
- 2 HDMI Extension Cable
- 3 USB Cable
- 4 Power Adapter

10.35mm

9.525 mm

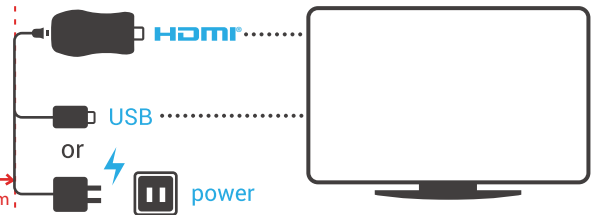
4.24 mm

3.89 mm



Setting Up MobiTV Connect

Step 1. Plug in MobiTV Connect



11.27 mm

Plug MobiTV Connect™ into one of the HDMI ports on your TV. Then connect the provided USB cable into the port labeled "USB" on your TV or use the power adapter to plug into an outlet. Make sure your TV is on and that you've selected HDMI as the input source.

Note: Some USB ports do not provide sufficient power so using an outlet is preferred. If the status light is off, it is not receiving sufficient power.

4.24 mm

3.89 mm

9.525 mm

You should now see some instructions appear on the screen.

10.6 mm

4.24 mm

3.89 mm

If you do not see the instructions, press the input button on your remote to change source until you see the instructions.

Step 2: Set up using an iOS or Android device

6.71 mm

Launch the application on your device and select 'Connect'.

If you cannot find the application go to www.mobitvconnect.com/download and download the application named MobiTV Connect.

4.24 mm

3.89 mm

Tips and Troubleshooting

You can quickly solve most problems with your MobiTV Connect by following the advice below.

If Your MobiTV Connect Isn't Responding

Try unplugging the power source and plugging it back in. If you are using the USB cable, try using the power adapter instead. If your MobiTV Connect still won't respond, you may need to reset it to the factory default settings.

Important: Resetting your MobiTV Connect to factory default settings erases all of the current settings.

To Reset Your MobiTV Connect to its Factory Settings:

- Use something pointed (such as a paperclip) to press and hold the Reset Button until the status light turns yellow (about 5 seconds)

If Your MobiTV Connect Status Light Isn't Green

Your MobiTV Connect may not be connected properly or there may be a problem with your internet service provider.

- FLASHING YELLOW means MobiTV Connect is trying to connect with the internet
- SOLID YELLOW means the Wi-Fi connection is there but data cannot be transferred
- FLASHING RED means the Wi-Fi connection is lost
- NO LIGHT means you don't have sufficient power through your power source
- SOLID RED means MobiTV Connect is loading

If the status light is solid yellow or flashing red try unplugging the power source and plugging it back in.

For additional info, visit: www.mobitvconnect.com

Warranty and Warnings

Safety Precautions and Warnings:

Observe all warnings, precautions and instructions for use.



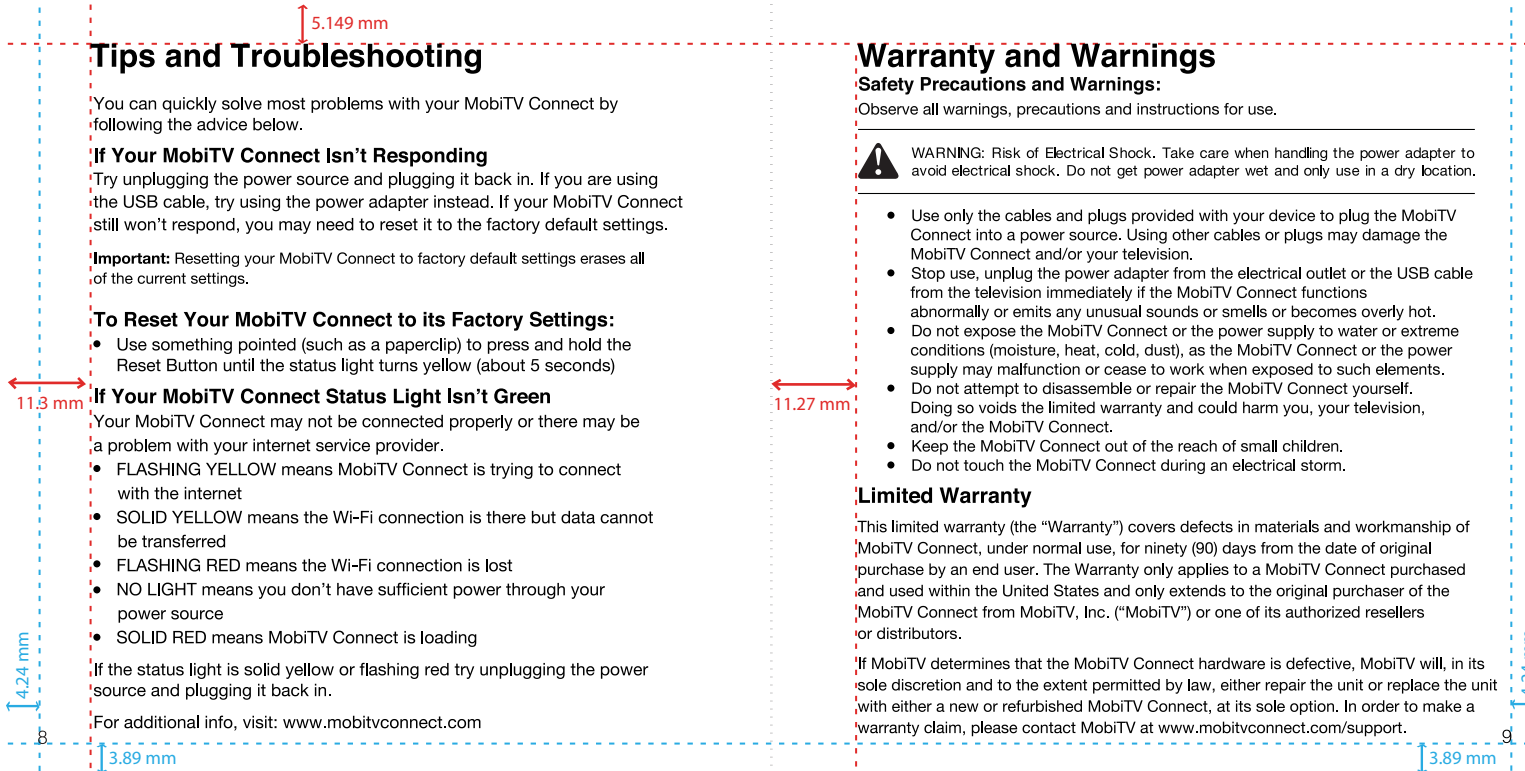
WARNING: Risk of Electrical Shock. Take care when handling the power adapter to avoid electrical shock. Do not get power adapter wet and only use in a dry location.

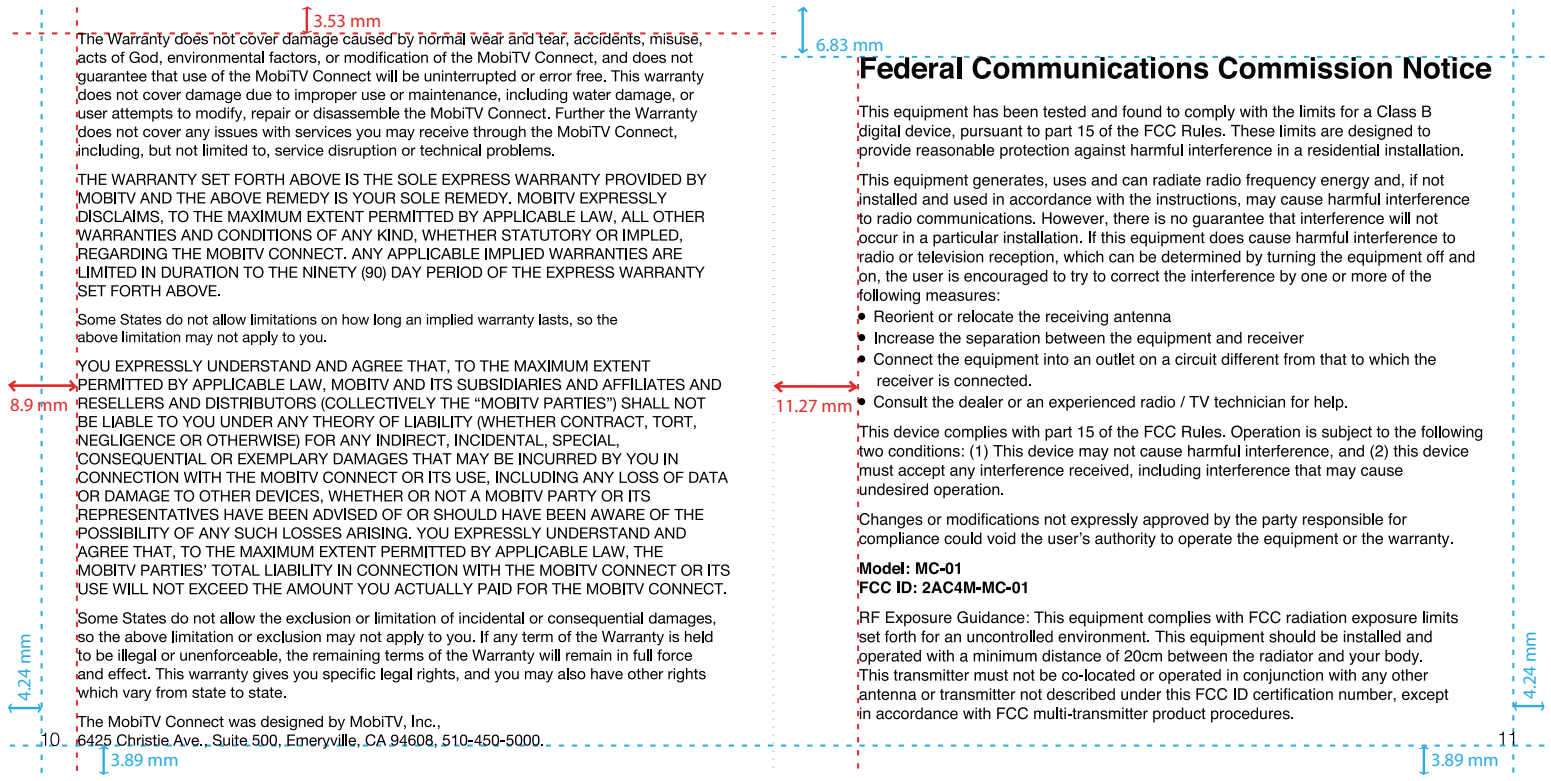
- Use only the cables and plugs provided with your device to plug the MobiTV Connect into a power source. Using other cables or plugs may damage the MobiTV Connect and/or your television.
- Stop use, unplug the power adapter from the electrical outlet or the USB cable from the television immediately if the MobiTV Connect functions abnormally or emits any unusual sounds or smells or becomes overly hot.
- Do not expose the MobiTV Connect or the power supply to water or extreme conditions (moisture, heat, cold, dust), as the MobiTV Connect or the power supply may malfunction or cease to work when exposed to such elements.
- Do not attempt to disassemble or repair the MobiTV Connect yourself. Doing so voids the limited warranty and could harm you, your television, and/or the MobiTV Connect.
- Keep the MobiTV Connect out of the reach of small children.
- Do not touch the MobiTV Connect during an electrical storm.

Limited Warranty

This limited warranty (the "Warranty") covers defects in materials and workmanship of MobiTV Connect, under normal use, for ninety (90) days from the date of original purchase by an end user. The Warranty only applies to a MobiTV Connect purchased and used within the United States and only extends to the original purchaser of the MobiTV Connect from MobiTV, Inc. ("MobiTV") or one of its authorized resellers or distributors.

If MobiTV determines that the MobiTV Connect hardware is defective, MobiTV will, in its sole discretion and to the extent permitted by law, either repair the unit or replace the unit with either a new or refurbished MobiTV Connect, at its sole option. In order to make a warranty claim, please contact MobiTV at www.mobitvconnect.com/support.





The Warranty does not cover damage caused by normal wear and tear, accidents, misuse, acts of God, environmental factors, or modification of the MobiTV Connect, and does not guarantee that use of the MobiTV Connect will be uninterrupted or error free. This warranty does not cover damage due to improper use or maintenance, including water damage, or user attempts to modify, repair or disassemble the MobiTV Connect. Further the Warranty does not cover any issues with services you may receive through the MobiTV Connect, including, but not limited to, service disruption or technical problems.

THE WARRANTY SET FORTH ABOVE IS THE SOLE EXPRESS WARRANTY PROVIDED BY MOBIV AND THE ABOVE REMEDY IS YOUR SOLE REMEDY. MOBIV EXPRESSLY DISCLAIMS, TO THE MAXIMUM EXTENT PERMITTED BY APPLICABLE LAW, ALL OTHER WARRANTIES AND CONDITIONS OF ANY KIND, WHETHER STATUTORY OR IMPLIED, REGARDING THE MOBIV CONNECT. ANY APPLICABLE IMPLIED WARRANTIES ARE LIMITED IN DURATION TO THE NINETY (90) DAY PERIOD OF THE EXPRESS WARRANTY SET FORTH ABOVE.

Some States do not allow limitations on how long an implied warranty lasts, so the above limitation may not apply to you.

YOU EXPRESSLY UNDERSTAND AND AGREE THAT, TO THE MAXIMUM EXTENT PERMITTED BY APPLICABLE LAW, MOBIV AND ITS SUBSIDIARIES AND AFFILIATES AND RESELLERS AND DISTRIBUTORS (COLLECTIVELY THE "MOBIV PARTIES") SHALL NOT BE LIABLE TO YOU UNDER ANY THEORY OF LIABILITY (WHETHER CONTRACT, TORT, NEGLIGENCE OR OTHERWISE) FOR ANY INDIRECT, INCIDENTAL, SPECIAL, CONSEQUENTIAL OR EXEMPLARY DAMAGES THAT MAY BE INCURRED BY YOU IN CONNECTION WITH THE MOBIV CONNECT OR ITS USE, INCLUDING ANY LOSS OF DATA OR DAMAGE TO OTHER DEVICES, WHETHER OR NOT A MOBIV PARTY OR ITS REPRESENTATIVES HAVE BEEN ADVISED OF OR SHOULD HAVE BEEN AWARE OF THE POSSIBILITY OF ANY SUCH LOSSES ARISING. YOU EXPRESSLY UNDERSTAND AND AGREE THAT, TO THE MAXIMUM EXTENT PERMITTED BY APPLICABLE LAW, THE MOBIV PARTIES' TOTAL LIABILITY IN CONNECTION WITH THE MOBIV CONNECT OR ITS USE WILL NOT EXCEED THE AMOUNT YOU ACTUALLY PAID FOR THE MOBIV CONNECT.

Some States do not allow the exclusion or limitation of incidental or consequential damages, so the above limitation or exclusion may not apply to you. If any term of the Warranty is held to be illegal or unenforceable, the remaining terms of the Warranty will remain in full force and effect. This warranty gives you specific legal rights, and you may also have other rights which vary from state to state.

The MobiTV Connect was designed by MobiTV, Inc., 6425 Christie Ave., Suite 500, Emeryville, CA 94608, 510-450-5000.

Federal Communications Commission Notice

This equipment has been tested and found to comply with the limits for a Class B digital device, pursuant to part 15 of the FCC Rules. These limits are designed to provide reasonable protection against harmful interference in a residential installation.

This equipment generates, uses and can radiate radio frequency energy and, if not installed and used in accordance with the instructions, may cause harmful interference to radio communications. However, there is no guarantee that interference will not occur in a particular installation. If this equipment does cause harmful interference to radio or television reception, which can be determined by turning the equipment off and on, the user is encouraged to try to correct the interference by one or more of the following measures:

- Reorient or relocate the receiving antenna
- Increase the separation between the equipment and receiver
- Connect the equipment into an outlet on a circuit different from that to which the receiver is connected.
- Consult the dealer or an experienced radio / TV technician for help.

This device complies with part 15 of the FCC Rules. Operation is subject to the following two conditions: (1) This device may not cause harmful interference, and (2) this device must accept any interference received, including interference that may cause undesired operation.

Changes or modifications not expressly approved by the party responsible for compliance could void the user's authority to operate the equipment or the warranty.

Model: MC-01
FCC ID: 2AC4M-MC-01

RF Exposure Guidance: This equipment complies with FCC radiation exposure limits set forth for an uncontrolled environment. This equipment should be installed and operated with a minimum distance of 20cm between the radiator and your body. This transmitter must not be co-located or operated in conjunction with any other antenna or transmitter not described under this FCC ID certification number, except in accordance with FCC multi-transmitter product procedures.