

Internal Photos of ActiveSense Range Extender

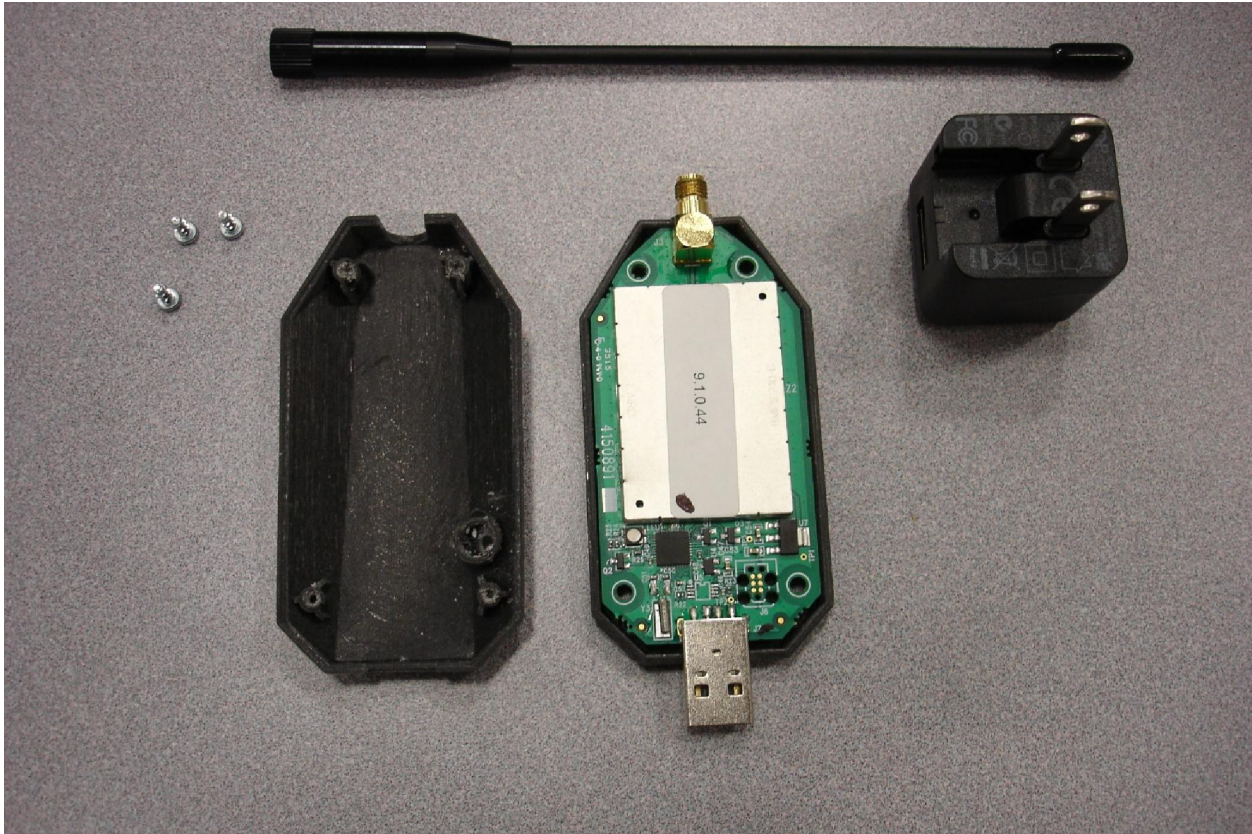


Figure 1. Internal Photo of Range Extender with PCB assembly top shown. AC to USB power adaptor is sealed and cannot be opened. Note: All screws were present during testing (one missing in photo).

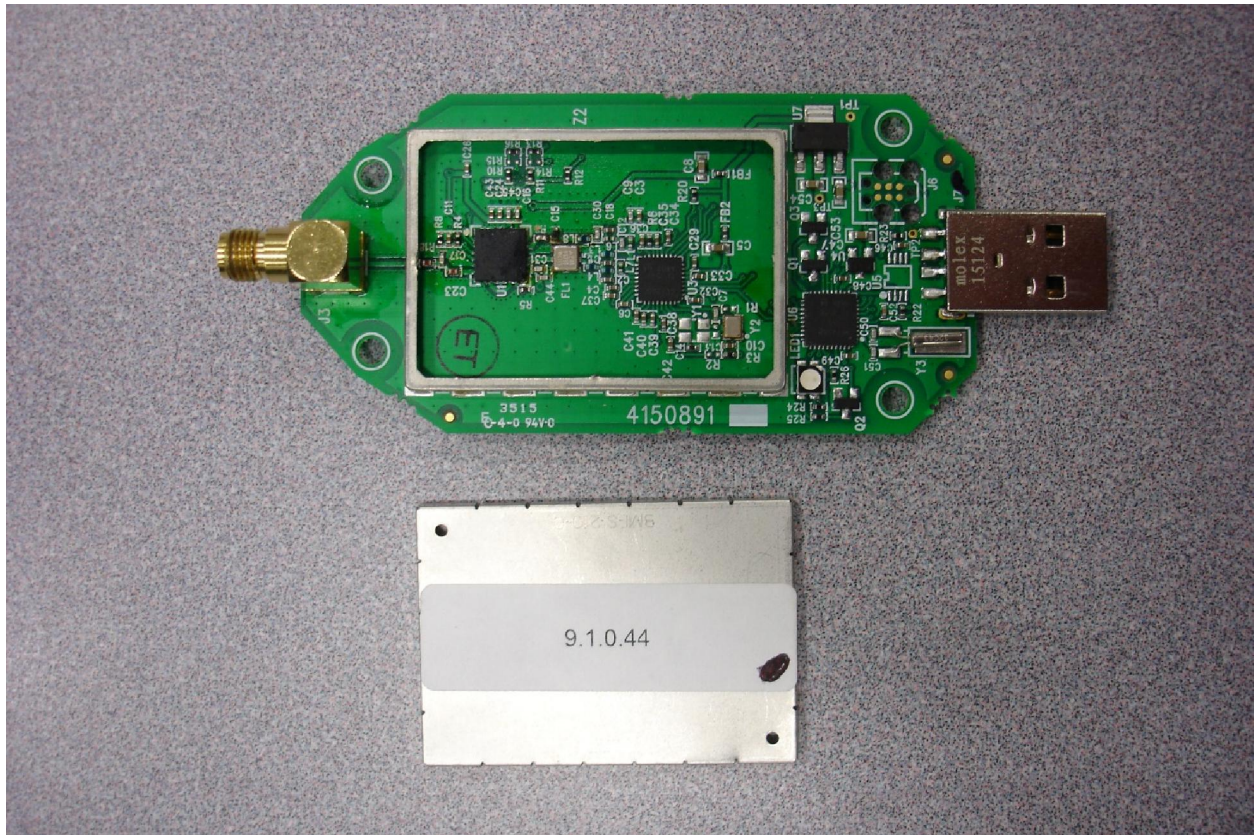


Figure 2. RF shield removed from top side of printed circuit board.

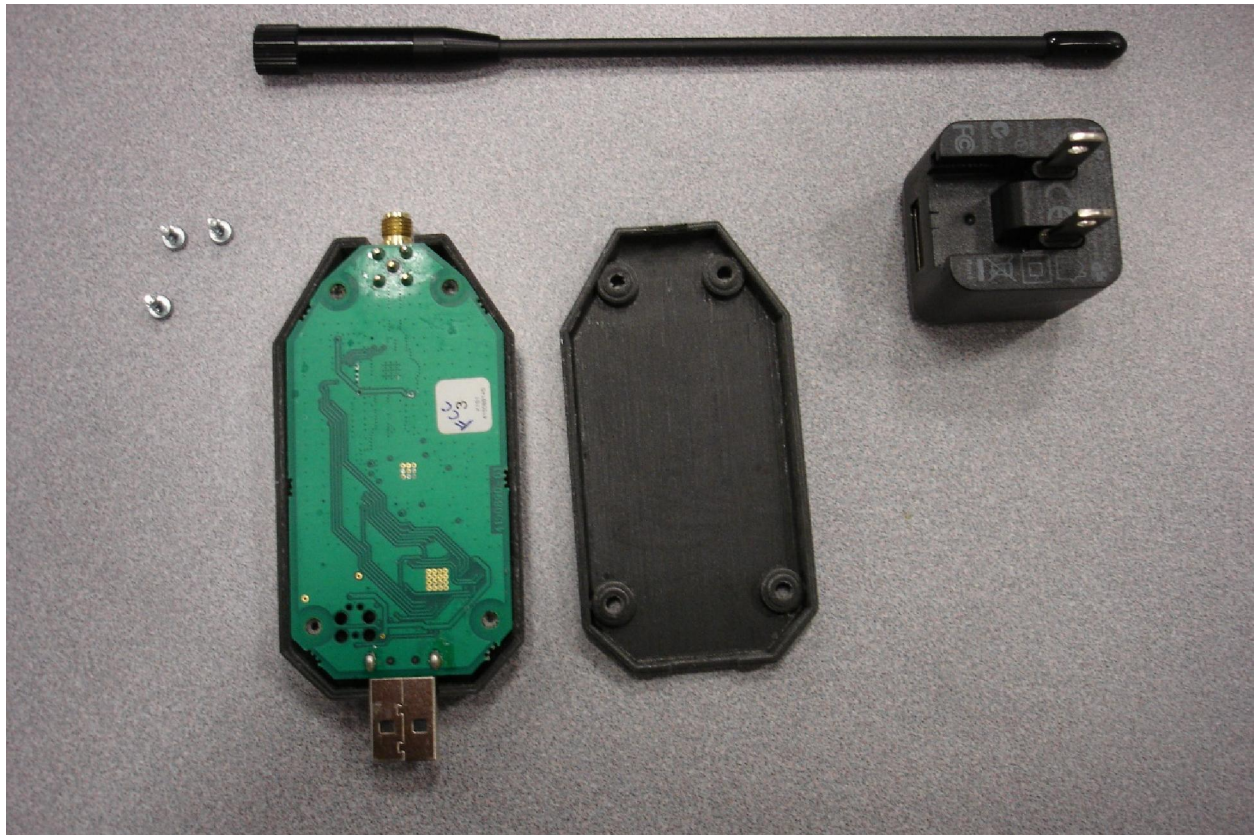


Figure 3. Internal Photo of Range Extender with PCB assembly bottom shown (flipped onto enclosure top).

Note: All screws were present during testing (one missing in photo).