

## 包裝內容物

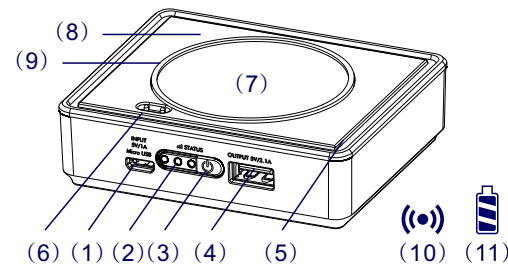
### 2AAT010B包裝內容物

型號	WCB005V-無線充電行動電源 WCH003A-行動電源充電底座 2ABD015B-底座電源供應器
產地	中國
製造商	廣州貴冠科技有限公司
尺寸	90*75*26mm-無線充電行動電源 116*118*22mm-行動電源充電底座 80*35*50mm-底座電源供應器
重量	180g-無線充電行動電源 100g-行動電源充電底座 150g-底座電源供應器
包裝內容	無線充電行動電源X3、行動電源充電底座X1 底座電源供應器X1、中英文說明書X1 MICRO USB 輸出/入線X1、

### WCB005V-無線充電行動電源

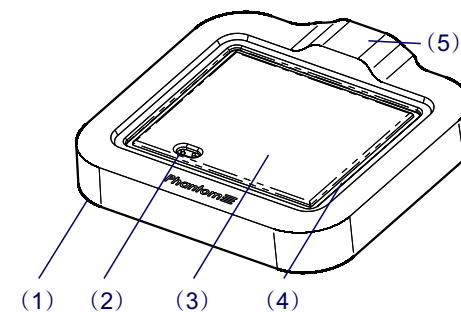
電源輸入(Micro USB)	5V/1A (Max)
輸出電源(USB 2.0)	5V/2.1A (Max)
輸出電源(無線充電)	5V/1A (Max)
電量容量	5200mAh/pcs
電量額定容量	3500mAh/pcs
電池壽命	依個人使用情況而定

## 規格&功能說明



### WCB005V-無線充電行動電源

	位置	說明
(1)	Micro USB電源輸入	5V/1.0A(MAX)
(2)	電量顯示	顯示行動電源目前電量
(3)	電源/電量顯示	此按鍵可啟動充電功能或啟動顯示行動電源目前電量。長按2秒可關閉電源。
(4)	USB 2.0輸出電源	5V/2.1A(MAX)
(5)	對位框	導引堆疊產品能快速定位
(6)	金屬充電針	當行動電源堆疊至充電底座時，可藉由此充電針，達到快速充電效果。
(7)	無線充電感應區	無線充電感應區
(8)	內置磁鐵	導引堆疊產品能快速定位
(9)	止滑圈	讓手機放置本產品上時，不會輕易滑動
(10)	警示聲	當配有無線充電接收產品，放置感應區時，會有“嗶”的提示聲，將進行充電。
(11)	電池	內置鋰電池 5200mAh

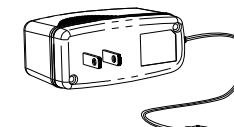


### WCH003A-行動電源充電底座

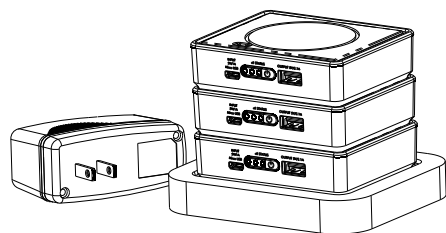
	位置	說明
(1)	止滑墊	在產品下方放置止滑墊
(2)	金屬充電針 (電源輸出)	當行動電源堆疊至充電底座時，可藉由此充電針，達到快速充電效果。
(3)	放置平台	行動電源放置處
(4)	對位框	導引堆疊產品能快速定位
(5)	DC JACK輸入電源	INPUT: 5V/3A (Max) 請搭配專屬的底座電源供應器

### 2ABD015B-底座電源供應器

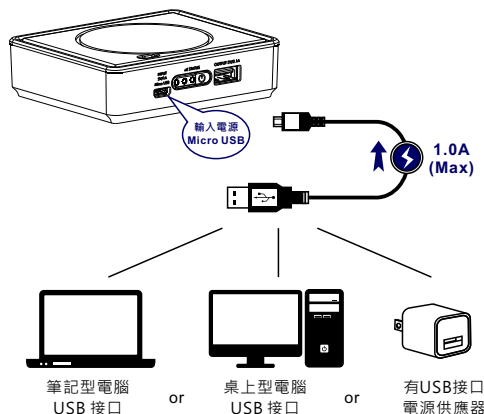
**Power Supply Unit**  
Model: 2ABD015B  
INPUT: 100-240Vac  
50-60Hz, 0.7A  
OUTPUT: 5V = 3.0A  
MADE IN CHINA



## 無線充電行動電源 (兼容Qi規範裝置)



## 行動電源充電



## 行動電源-快速充電

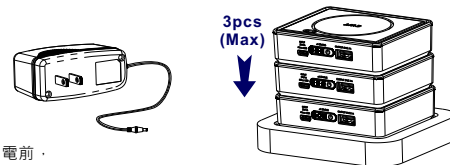
### 使用包裝內附的專屬充電底座

- 將行動電源放在底座上，即可快速充電。
- 充電時請確認行動電源是否有亮燈或閃爍。



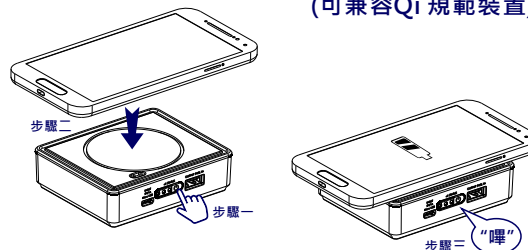
## 行動電源-快速充電

- 為確保可在短時間內充飽行動電源電量，同時，建議至多放置三個行動電源。



- ※充電前，請確認電源供應器是否有連接至充電底座。

## 無線充電功能 (可兼容Qi 規範裝置)



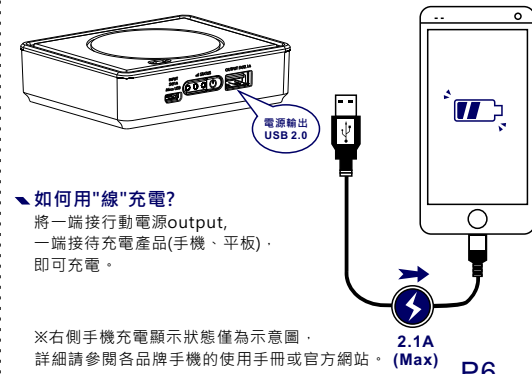
### 如何使用無線充電?

- 若你的隨身智慧型產品配有符合Qi規範的接收裝置。
- 步驟一: 按壓電源按鈕。
- 步驟二: 將產品放置無線充電感應區上。  
(接收片與無線充電感應區需互相接觸)。
- 步驟三: 聽見“嗶”一聲，即開始充電。

- ※以下所列之智慧型手機，其手機原廠皆有其配套的無線充電接收器模組配件或已內建無線充電功能，詳細請參閱各品牌手機的使用手冊或官方網站。

Samsung	Google	LG	Nokia	HTC
Galaxy S3	Nexus 4	Optimus G Pro	Lumia 1520	Windows Phone 8X
Galaxy S4	Nexus 5		Lumia 1020	Droid DNA
Galaxy S5	Nexus 7 II	MOTOROLA	Lumia 930	
Note 2		MOTO X	Lumia 925	
Note 3		Droid 4	Lumia 920	
Note 4			Lumia 830	
			Lumia 820	
			Lumia 720	

## 一般充電



### 如何用“線”充電?

- 將一端接行動電源output，一端接待充電產品(手機、平板)，即可充電。

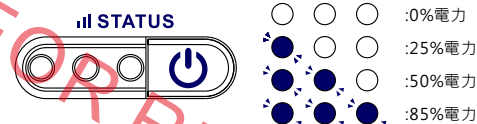
- ※右側手機充電顯示狀態僅為示意圖，詳細請參閱各品牌手機的使用手冊或官方網站。

## 電量顯示燈號

### 如判別行動電源電量?

- 步驟一: 按壓電源按鈕。
- 步驟二: 請依左側亮燈數判別剩餘電量電量。

- ※假設行動電源處於電量0%的電量
- 正常使用狀況下，連續充電4小時，即可將行動電源由0%充滿至100%。
- 正常使用狀況下，當連續充電3小時，即可將行動電源由0%充滿至85%，三顆燈號會全亮。
- 建議可繼續充電一小時，確保電量更為充足。

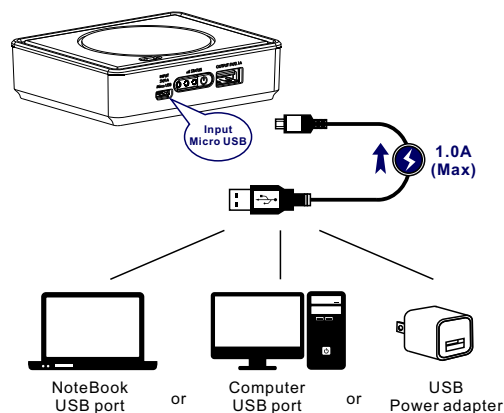
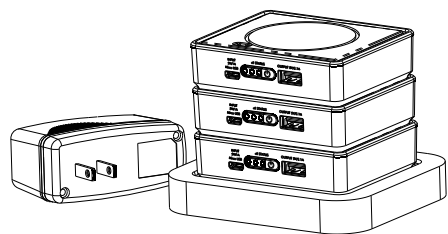


## 注意事項

### 本產品使用須知與注意事項

1. 請勿靠近火源和浸泡於水中。
2. 行動電源在充電時，請勿同時充手機、平板...等其他產品。
3. 若長時間不使用無線充電功能，建議可長按電源按鈕2秒鐘，即可關閉無線充電功能，減少電量耗損。

## Wireless Charging (Qi Compatible Devices) With Power Bank



## Quick Charge

### Apply with corresponding power supply Unit within the package

- Placing the power banks on top of the power bank stand to receive rapid charging effect
- Confirm if the LED lights of power bank are on or flashing



P4

## Package Contents

### 2AAT010B Package Contents

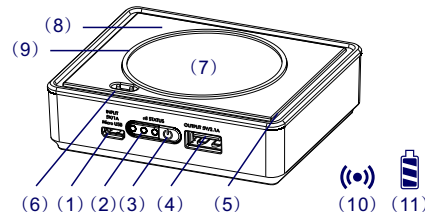
Model	WCB005V-Wireless Power Bank WCH003A-Power Bank Stand 2ABD015B-Power Supply Unit
Made	China
Manufacturer	Guangzhou Gui Guan Power Plus Tech.Corp.
Size	90*75*26mm-Wireless Power Bank 116*118*22mm-Power Bank Stand 80*35*50mm-Power Supply Unit
Weight	180g-Wireless Power Bank 100g-Power Bank Stand 150g-Power Supply Unit
Package Includes	Wireless Power BankX3 · Power Bank StandX1 · Power Supply UnitX1 · Chinese&English InstructionX1 · Micro USB Output/input Wire X1 ·

### WCB005V-Wireless Power Bank

Power Input(Micro USB)	5V/1A (Max)
Power Output(USB 2.0)	5V/2.1A (Max)
Power Output(Wireless)	5V/1A (Max)
Capacity	5200mAh/per pcs
Rated Capacity	3500mAh/per pcs
Battery Life	Depending On Personal Use

P1

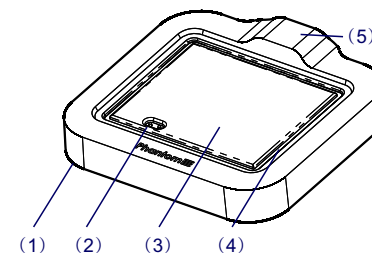
## Buttons&Controls



### WCB005V-Wireless Power Bank

Location	Description
(1) Input(Micro USB)	5V/1.0A(MAX)
(2) Battery Display	Display current battery power status
(3) Power On/Off/ Battery Display	Activate charging function or to display battery power. Turn off power by holding the button for more than 2 sec.
(4) Output(USB 2.0)	5V/2.1A(MAX)
(5) Frames	Easy to stack power banks on power bank stand
(6) Pogo Pin	By attaching the Pogo Pin to receive rapid charging effect
(7) Sensing Area	Wireless Charging Sensing Area
(8) Built-In Magnet	Accurately locate stacking power banks to designated spots
(9) Skid proof Ring	Prevent product being charged from sliding
(10) Built-in Buzzer	When sensor touched, the receiver will sound
(11) Battery	Built-in with 5200mAh Lithium Battery

P2



### WCH003A-Power Bank Stand

Location	Description
(1) Skid proof pad	Located under the power bank stand to prevent from sliding
(2) Pogo Pin	By attaching the Pogo Pin to receive rapid charging effect
(3) Power Bank placing	Location where power banks should be placed
(4) Frames	Easy to stack power banks on power bank stand
(5) Input(DC Jack)	INPUT :5V/3A (Max) Apply with corresponding Power supply Unit

### 2ABD015B-Power Supply Unit

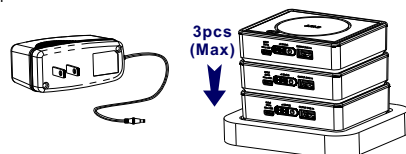
Power Supply Unit  
Model:2ABD015B  
INPUT:100-240Vac  
50-60Hz,0.7A  
OUTPUT:5V 3.0A  
MADE IN CHINA



P3

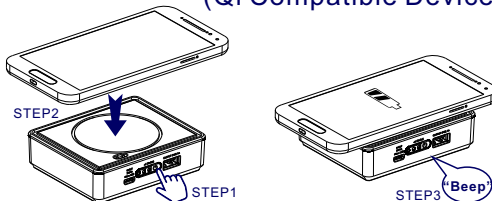
## Charge In Quick Charge

- To ensure all power banks will be charged within a short period of time, place 3 power banks at the same time is recommended.



※Make sure the power supply unit is connected to the power bank stand correctly before charging.

## Wireless Charging (Qi Compatible Devices)



### How to use wireless power bank ?

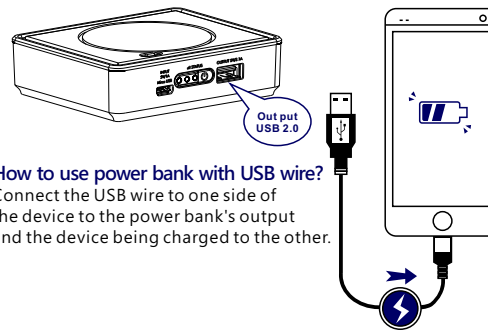
- If the smart device is Qi compatible.
- Step 1: Press the power button
- Step 2: Place the device which needs to be charged on top of the sensing area. (The signal receiving chip should correspond to the power bank sensing area.)
- Step 3: The device begins to be charged after the "beep" sound is made.

P5

- ※The listed smart phone devices are Qi compatible.
- ※For more detail information, please visit the specific phone manual or its official website.

Samsung	Google	LG	Nokia	HTC
Galaxy S3	Nexus 4	Optimus G Pro	Lumia 1520	Windows Phone 8X
Galaxy S4	Nexus 5		Lumia 1020	Droid DNA
Galaxy S5	Nexus 7 II	MOTOROLA	Lumia 930	
Note 2		MOTO X	Lumia 925	
Note 3		Droid 4	Lumia 920	
Note 4			Lumia 830	
			Lumia 820	
			Lumia 720	

## Wired Charging



- How to use power bank with USB wire?  
Connect the USB wire to one side of the device to the power bank's output and the device being charged to the other.

※The diagram shown on the right is only for your reference. For more detail information, please visit the specific phone manual or its official website.

P6

## Battery Indicator

### Battery Indicator

- Step 1: Press the power button
- Step 2: Read the number of lights to show the current battery power standings

- ※ Under the assumption if the battery of power bank is with 0% ※
- Under normal conditions, the battery can be charged from 0% to 100% by charging 4 consecutive hours.
- Under normal conditions, the battery can be charged from 0% to 85% by charging 3 consecutive hours.

※All 3 battery indicator lights will be on, however to ensure the battery is fully charged, an extra hour to charge is recommended. ※



P7

## Warnings

### // Product instructions and notes

1. Do Not place close to fire or soak under the water
2. While the power banks are being charged, Do Not charge other devices at the same time
3. Do turn off the power bank if not being used. By pressing the power button for 2 sec to lower the battery loss.

### // Federal Communication Commission Interference Statement

This equipment has been tested and found to comply with the limits for a Class B digital device, pursuant to Part 15 of the FCC Rules. These limits are designed to provide reasonable protection against harmful interference in a residential installation. This equipment generates, uses and can radiate radio frequency energy and, if not installed and used in accordance with the instructions, may cause harmful interference to radio communications. However, there is no guarantee that interference will not occur in a particular installation. If this equipment does cause harmful interference to radio or television reception, which can be determined by turning the equipment off and on, the user is encouraged to try to correct the interference by one of the following measures:

- Reorient or relocate the receiving antenna.
- Increase the separation between the equipment and receiver.
- Connect the equipment into an outlet on a circuit different from that to which the receiver is connected.
- Consult the dealer or an experienced radio/TV technician for help.

// **FCC Caution:** Any changes or modifications not expressly approved by the party responsible for compliance could void the user's authority to operate this equipment.

This device complies with Part 15 of the FCC Rules. Operation is subject to the following two conditions: (1) This device may not cause harmful interference, and (2) this device must accept any interference received, including interference that may cause undesired operation.

### // IMPORTANT NOTE:

#### **FCC Radiation Exposure Statement:**

The product comply with the US portable RF exposure limit set forth for an uncontrolled environment and are safe for intended operation as described in this manual. The further RF exposure reduction can be achieved if the product can be kept as far as possible from the user body or set the device to lower output power if such function is available.

This transmitter must not be co-located or operating in conjunction with any other antenna or transmitter.

