

Conducted Emissions Test Set Up

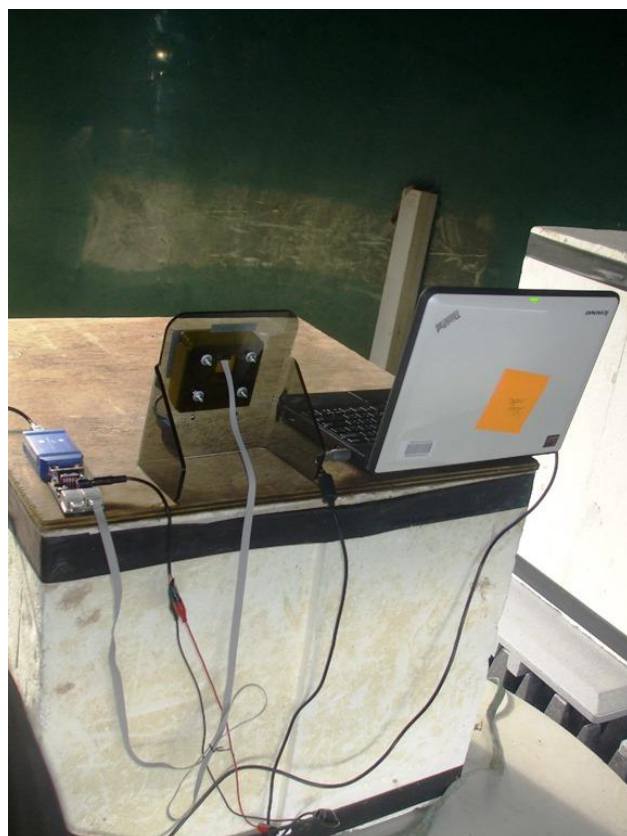
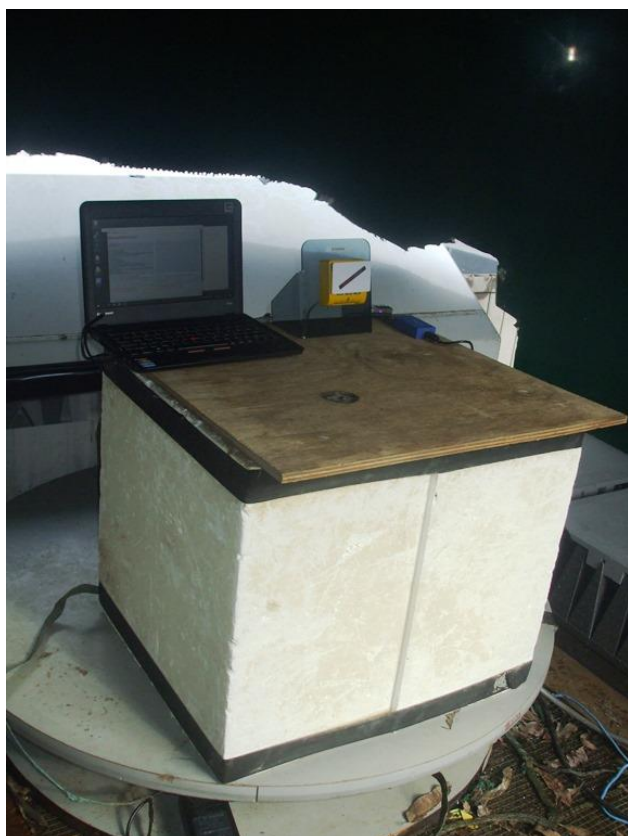


Radiated Emissions Test Set Up at a height of 80 cm



Left hand side

Rear and right hand side



Photographs:

General Set Up





Loop Test Set Up. 100 kHz - 30.0 MHz



Test set up using a biconical antenna between 30 - 300 MHz



Log Periodic Test Set Up. 300 - 1000 MHz





Inside the test enclosure showing the turntable and test table.

80 cm high test table



Cone enclosure up close showing the cones

