

# pebble bee



GET IT ON  
Google play



Available on the  
App Store

## MANUAL GUIDE

Model name:Honey  
FCC ID:2AC2FHONEY  
IC:12281A-HONEY

*Place this VERSATILE, WATER RESISTANT & DURABLE  
PebbleBee on anything and  
ALWAYS KEEP TRACK of your belongings*

[www.pebblebee.com](http://www.pebblebee.com)

## INDEX:

---

Enabling/disabling your PebbleBee device I

Two ways to create/sign into your account II

PebbleBee Hive Page II - VI

PebbleBee Monitor Device Page VII - IX

PebbleBee Device settings X

Alert Settings Page XI - XIII

Global Settings Page XIV

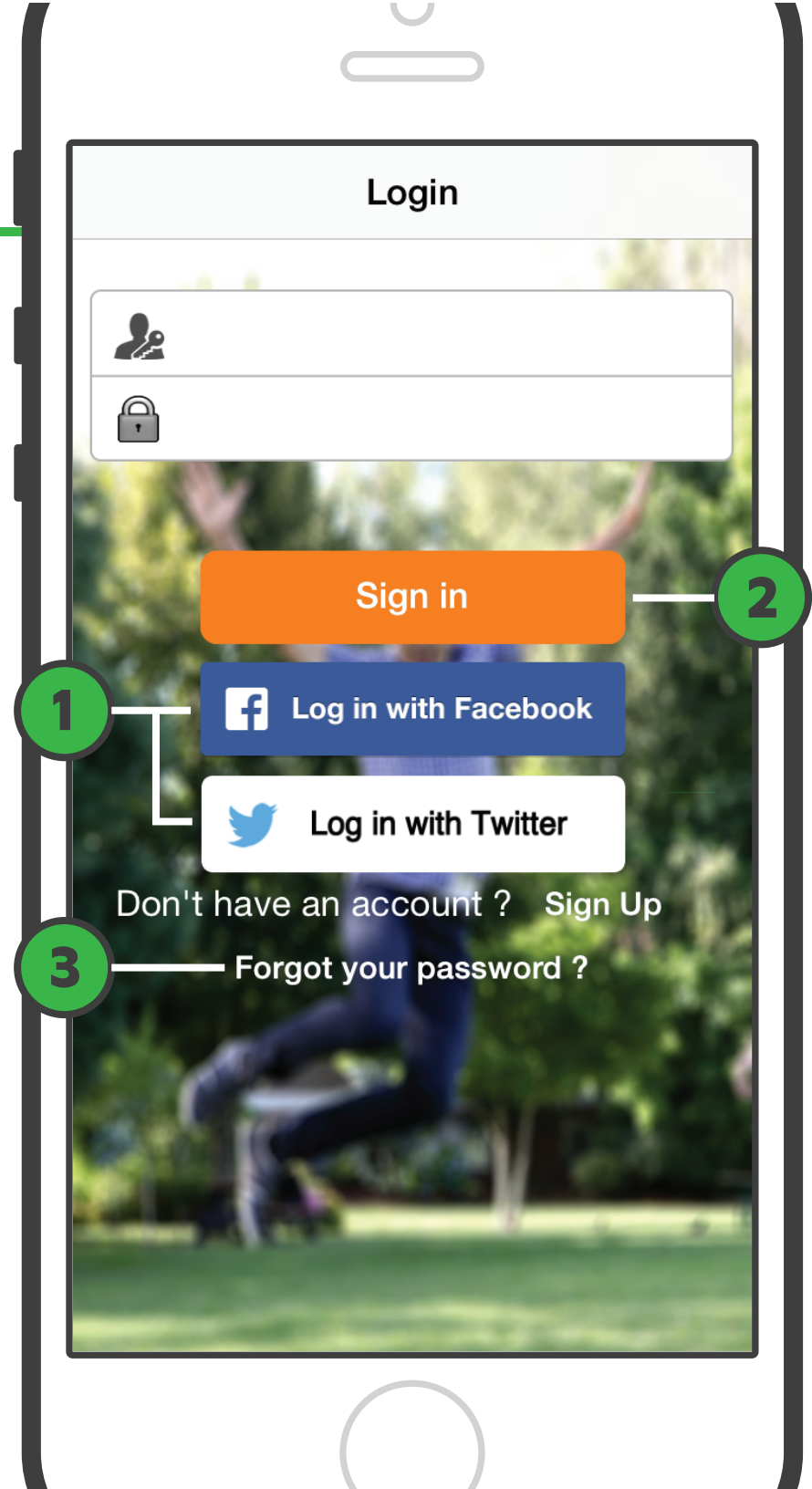
## ENABLING/DISABLING YOUR PEBBLEBEE DEVICE

---

If your device is not detected on the main Hive page, your PebbleBee is probably in sleep mode. To wake up your PebbleBee, press and hold down the side button for about 5 seconds until you hear **two consecutive beeps** then release, putting your PebbleBee in transmit mode. Your PebbleBee should appear in your hive now. If you haven't claimed your device, you can do so at this time. To put your PebbleBee in sleep mode again, make sure to exit the PebbleBee app on your phone to disconnect first, then press and hold down the side button for about 5 seconds until you hear **one beep** then release. Your PebbleBee is now sleeping and should stop transmitting.

## TWO WAYS TO CREATE/SIGN INTO YOUR ACCOUNT:

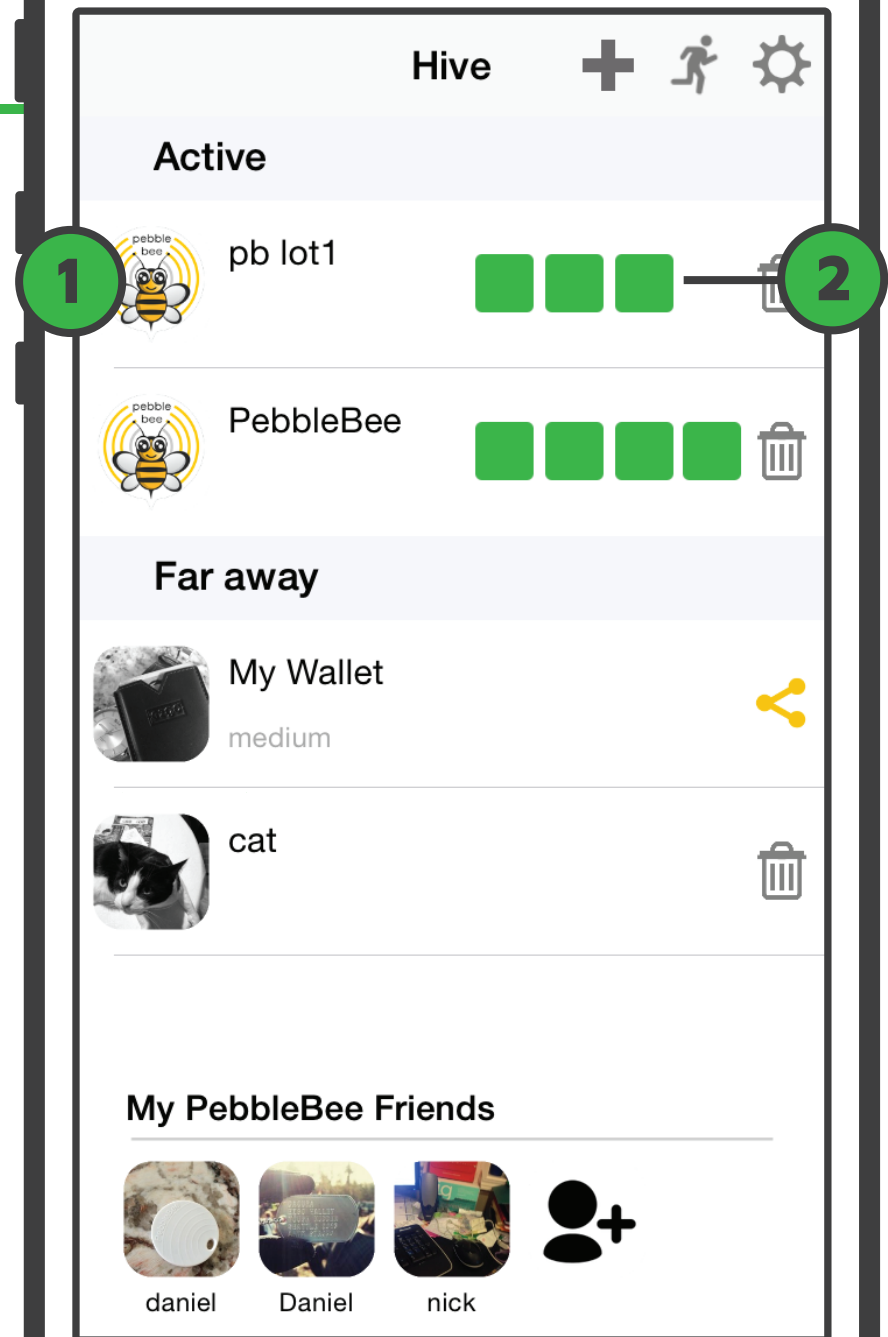
- 1 Login with your existing Facebook or Twitter account.
- 2 Create a PebbleBee account using your **email address**. Note your email address must be correct and under your control. Sign in with that information.
- 3 Forgot Password takes you to a link to reset your PebbleBee account password. If you are using a **Facebook or Twitter login** then reset your password directly with Facebook.com or Twitter.com



## PEBBLEBEE HIVE PAGE

This is where the user can view all owned/shared or Unclaimed PebbleBees. "Active" are PebbleBees that are currently being detected. "Far Away" are PebbleBees that are out of range but previously claimed. "Silent" are PebbleBees shared to you but put in "Private" mode so you cannot control or use them.

- 1 PebbleBee name and picture - As specified by user
- 2 Range of PebbleBee - Green is near, yellow is medium range, red is far range  
Click on a PebbleBee entry for specific monitoring and control to go into the device page



3

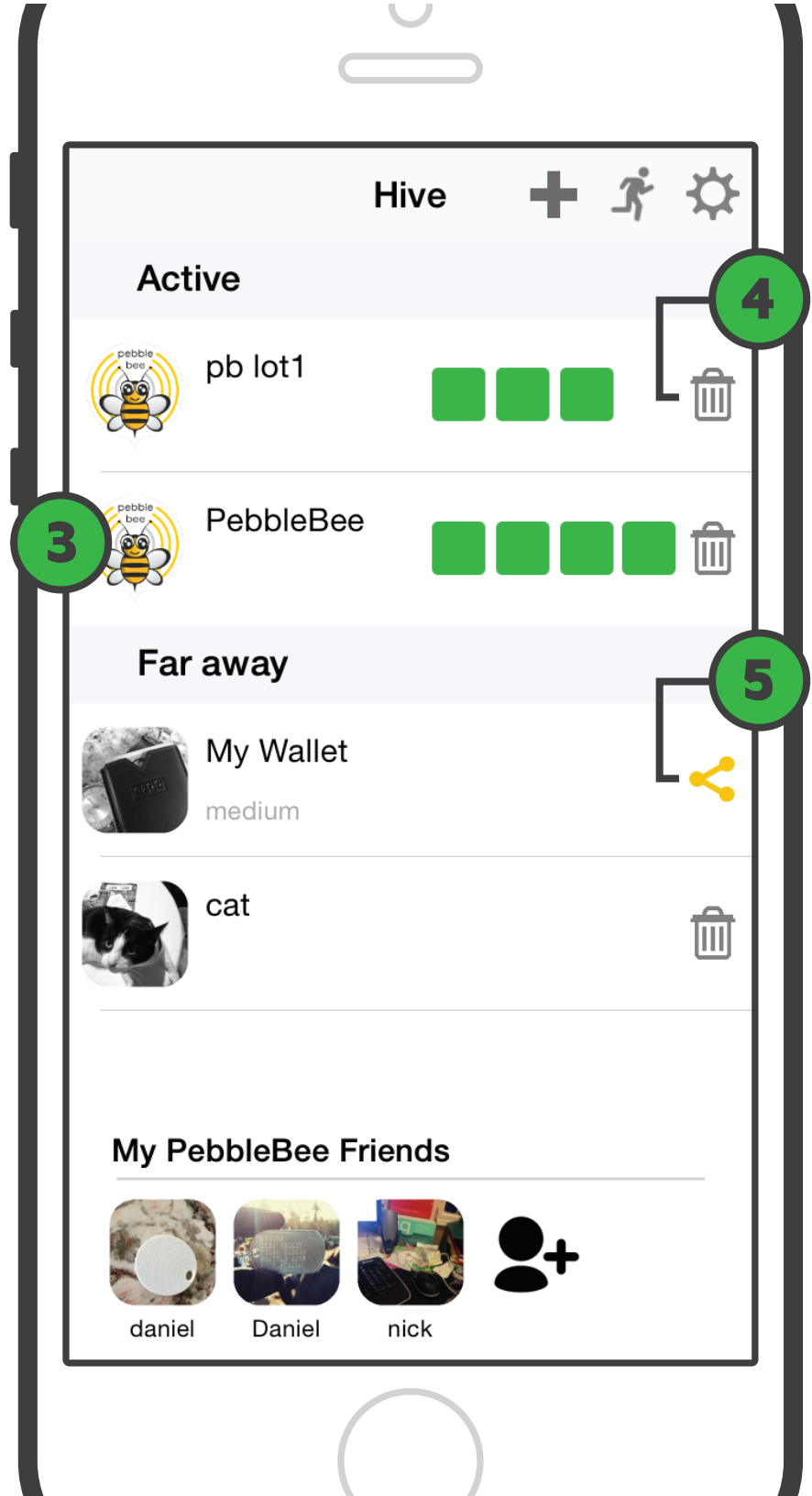
To monitor and control a PebbleBee, click on an entry to enter the device page for specific monitoring and control to go into the device page

4

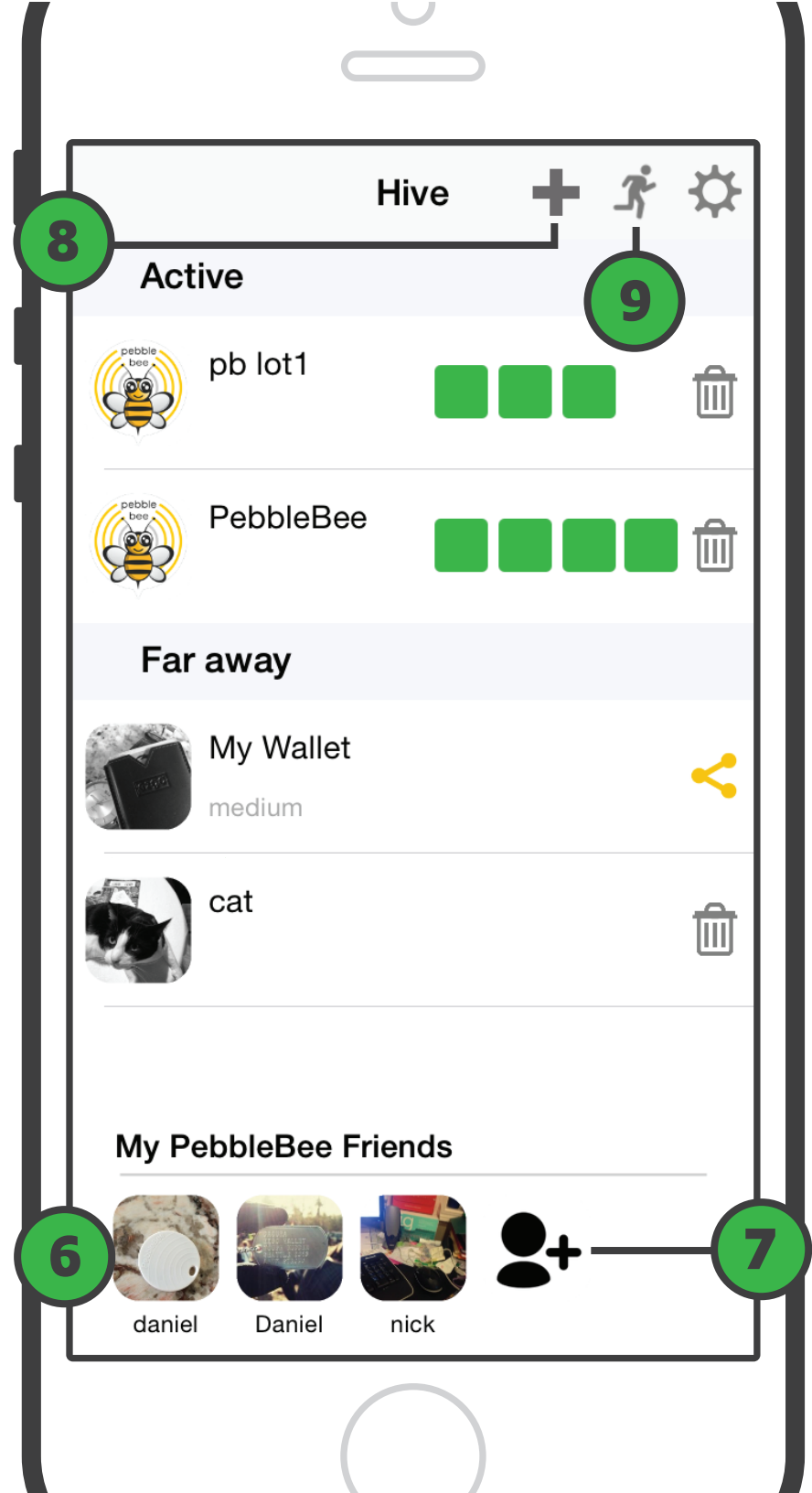
Unclaim device - This releases ownership of the PebbleBee so that you can give your PebbleBee away to someone. If this icon does not appear the device is not claimed and can be claimed.

5

Shared symbol - This means the device is shared to you by someone. Shared PebbleBees have a specific subset of commands that can be performed (explained on device page).



- 6 PebbleBee Friends - These are specified family and friends that you may share PebbleBees with or just want automatic notification that they found your lost PebbleBee!
- 7 Add a New Friend - Either by email or from your Facebook friends (if you logged in with Facebook)
- 8 Scan for new devices - Bluetooth scan periods are limited on phones to preserve battery life, so you can force an immediate update
- 9 Logout - Exit current account so another user can log in

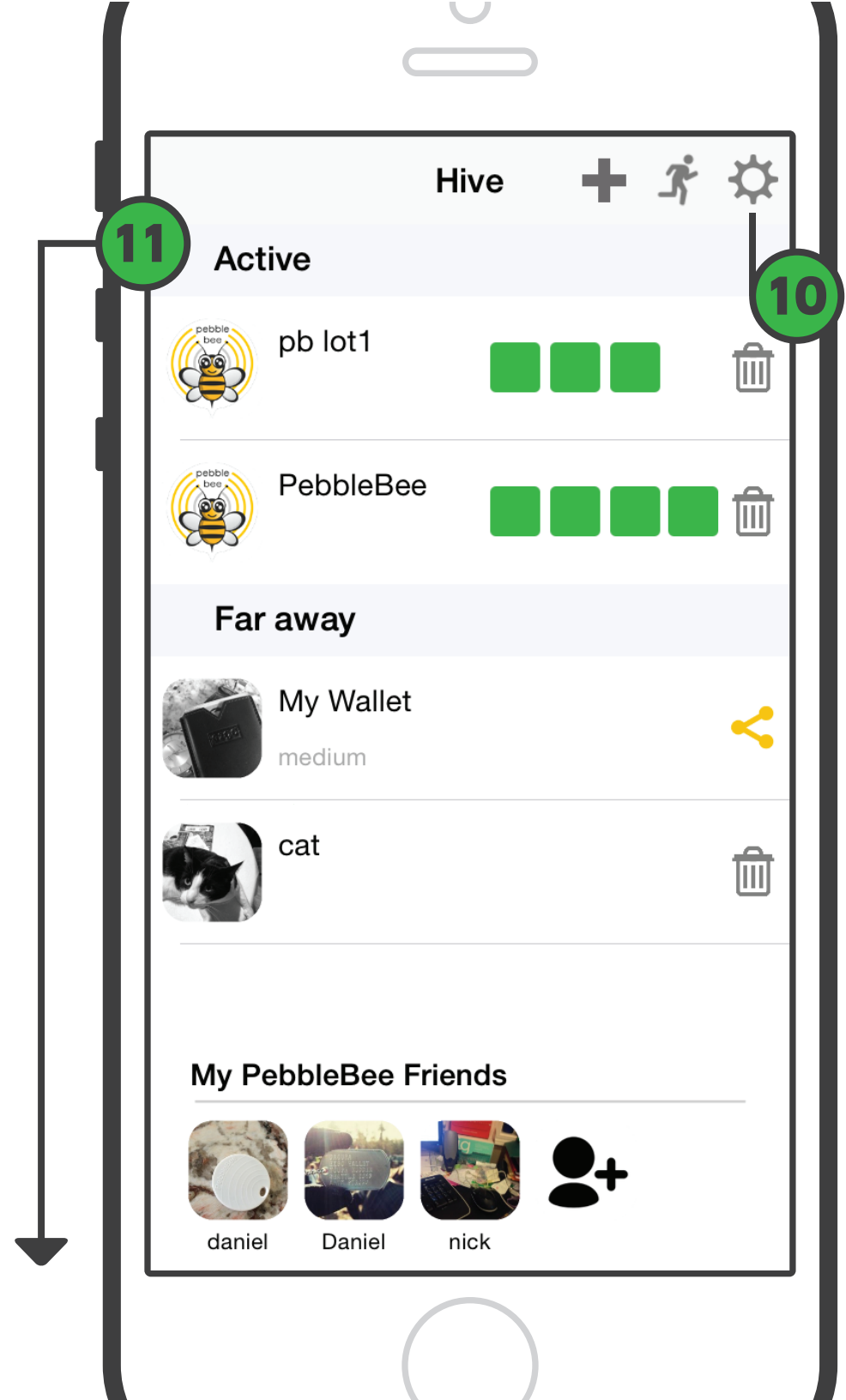


10

Global Settings - Brings up global settings page

11

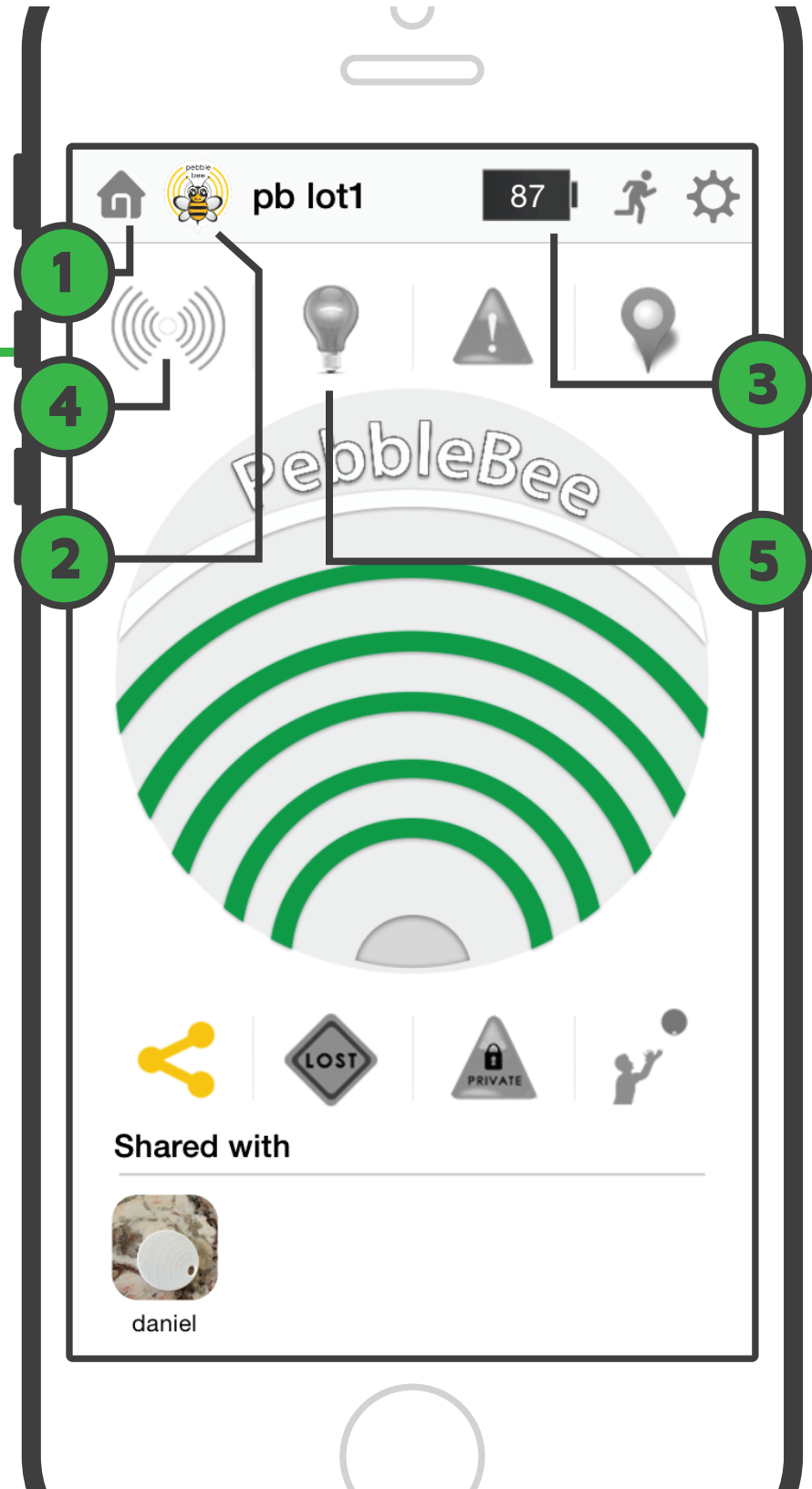
Swipe down - Reloads PB data from cloud, this includes any new shared data. The auto updates are limited to facilitate limited data transfer and battery life of the phone.



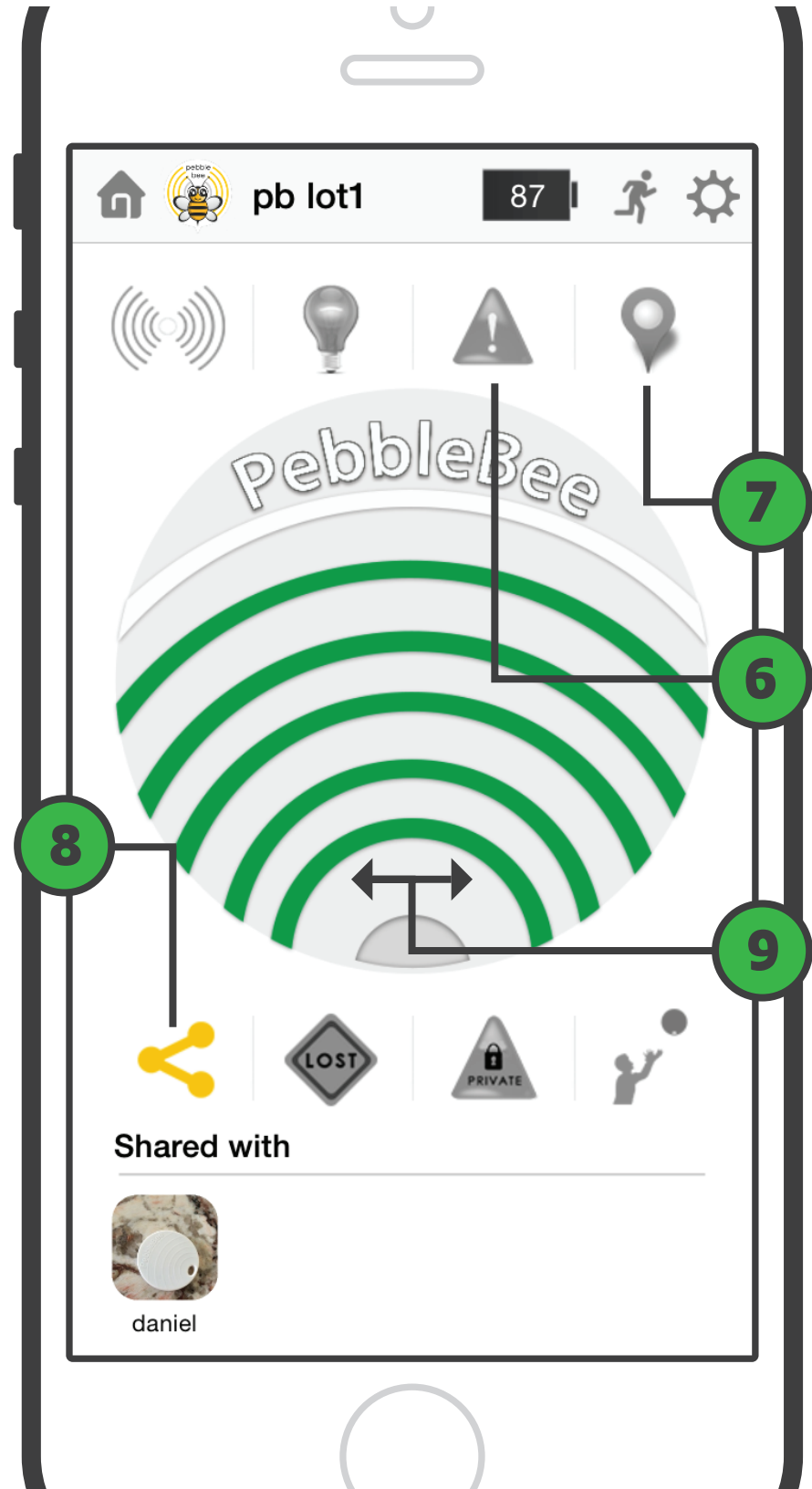


## PEBBLEBEE MONITOR DEVICE PAGE - CONTROL, CONFIGURE AND MONITOR A SPECIFIC PEBBLEBEE

- 1** Home Page - Back to Hive
- 2** PebbleBee Settings - Click to setup Names and Pics for PebbleBee
- 3** Remaining Battery life in percentage
- 4** Buzz - Command PebbleBee to sound device alarm
- 5** Spark - Command PebbleBee LED to light up

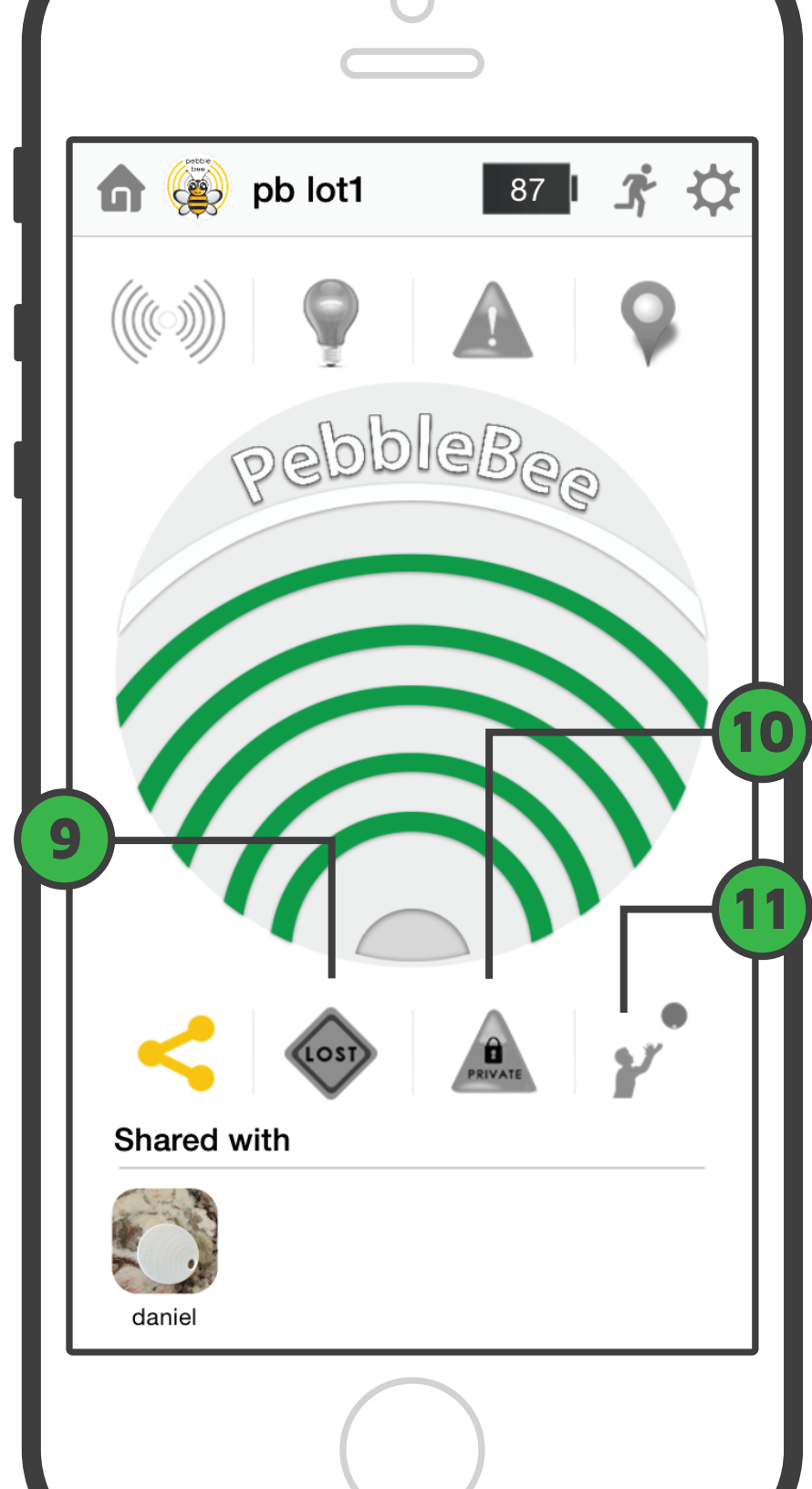


- 6 Alert Settings - Takes you to configure all alerts such as Range Alerts and Multi-Function Button actions.
- 7 Locate - Shows a Pin on a google Map indicating the last detected position. One can click on pin for Last detected time.
- 8 Share - Choose your PebbleBee friends to share this PebbleBee with. Scroll onto name of friend and tap on select to choose. At bottom of page you can view friends you have shared this device with. To unselect friends, just tap on the Friend icon and confirm.
- 9 User can swipe left or right to switch from one PebbleBee device page to another



- 9 Lost - Mark a device lost. When any other PebbleBee App user comes into range of your PebbleBee you will be notified with an alert. You can view the found location on the "locate" button.
- 10 Private - This prevents updates to the cloud for a specific PebbleBee. This also prevents shared users from using or viewing current data about the device.
- 11 Release Bee - This unclaims the PebbleBee so another user can claim/own it.

If a device is shared with you by someone else, it will not display the bottom row of command from 8-11.



## PEBBLEBEE DEVICE SETTINGS

- 1 Click to take or choose a Picture for your PebbleBee
- 2 Name and describe your PebbleBee as will be seen on the Hive

Back Edit Save

1

2

Name

cat

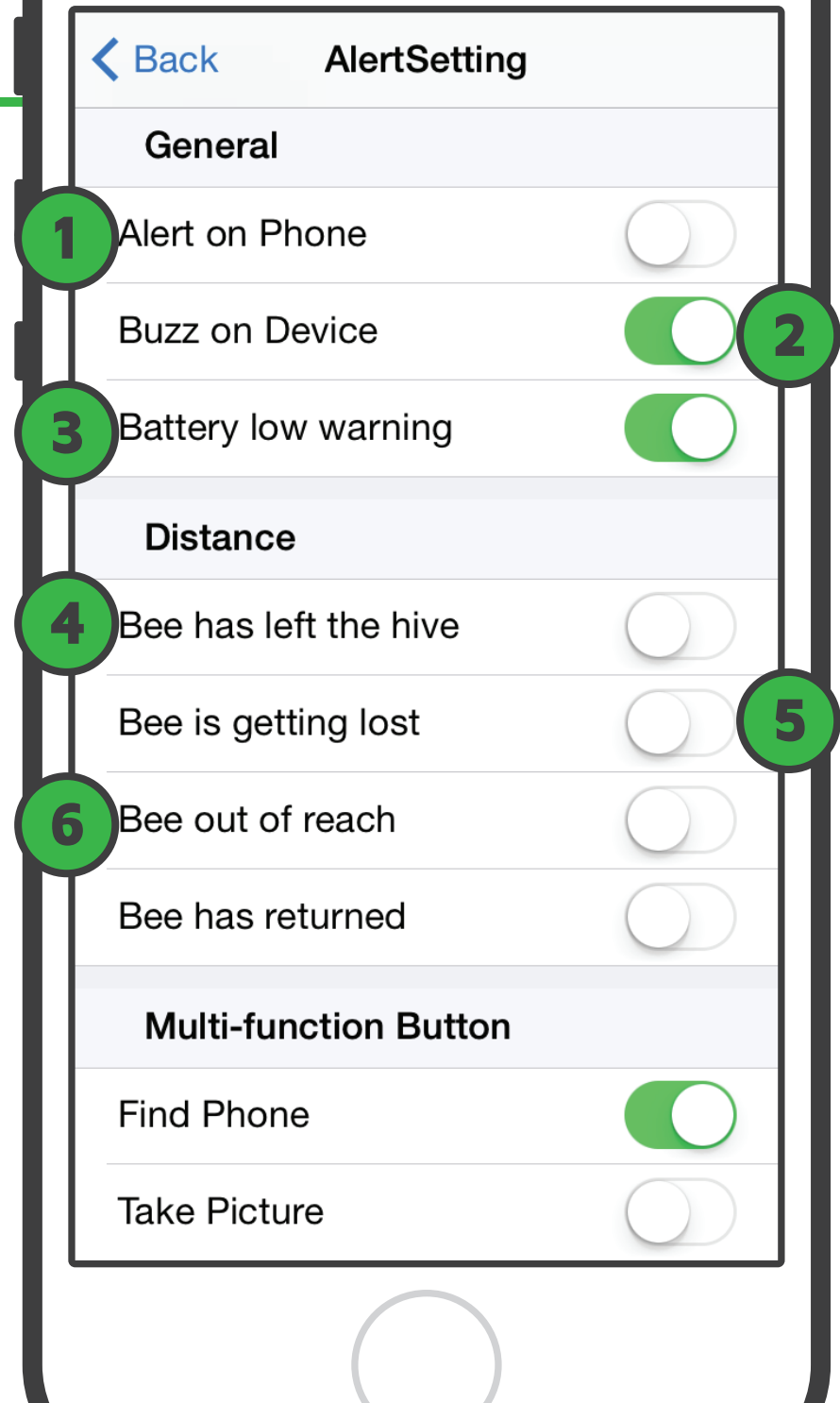
Description

Beannie

Save

## ALERT SETTINGS PAGE

- 1 On/Off - When Alert condition is met Audio alert user on Phone
- 2 On/Off - When Alert condition is met automatically Buzz on PebbleBee
- 3 Alert on Phone When Battery Life is low
- 4 Range Alert - PebbleBee left the hive - PB has left immediate proximity
- 5 Range Alert - PebbleBee is getting lost - PB has left Medium proximity
- 6 Range Alert - PebbleBee Out of reach - PB has left communication Range

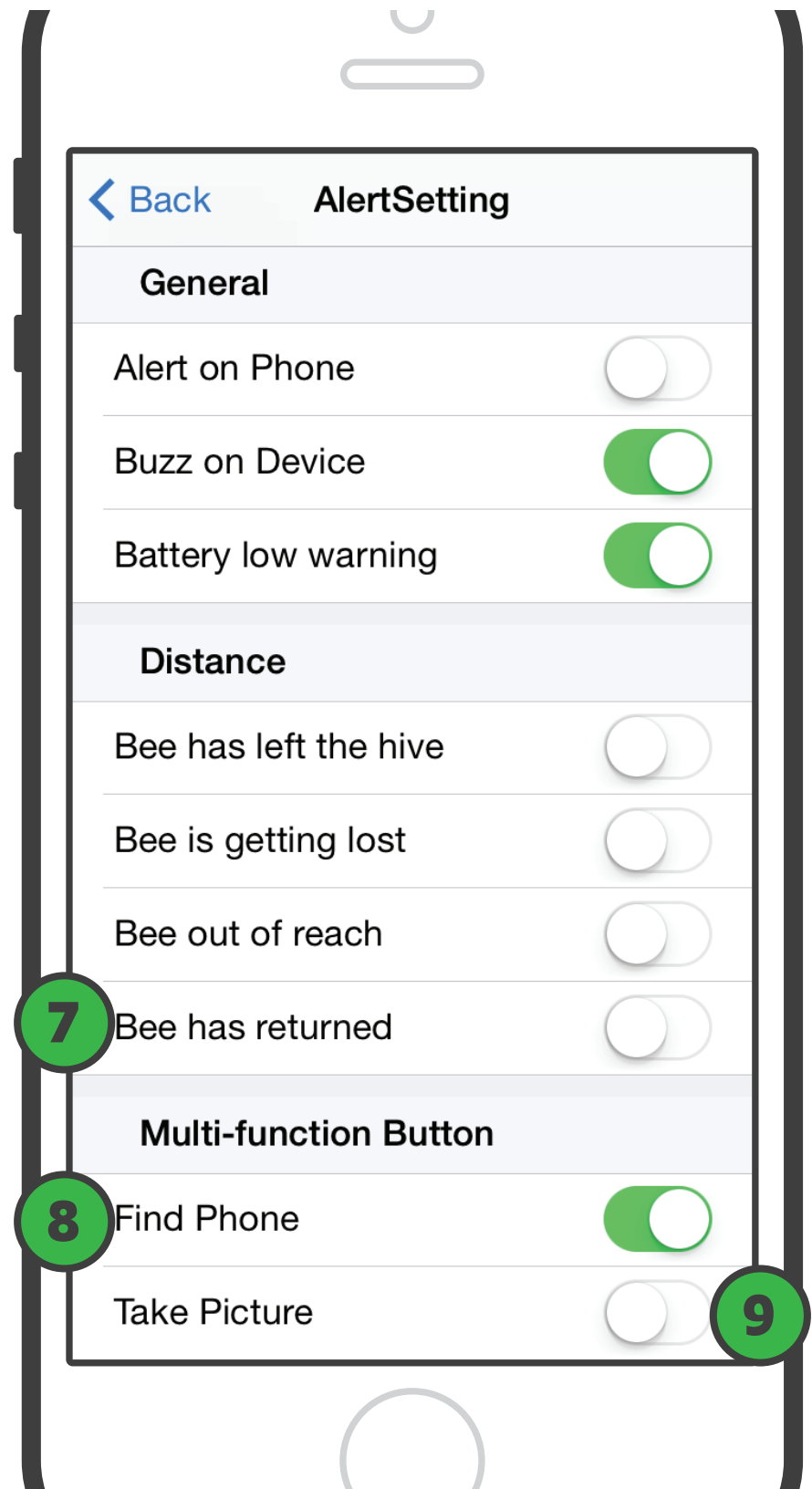


**7** Range Alert - PebbleBee has come back into range

Multi-Function Button - A range of commands as the result of pressing the Multi-function Button. Current examples are:

**8** Find your Phone - Click the Button and force an alert on your phone to assist in finding

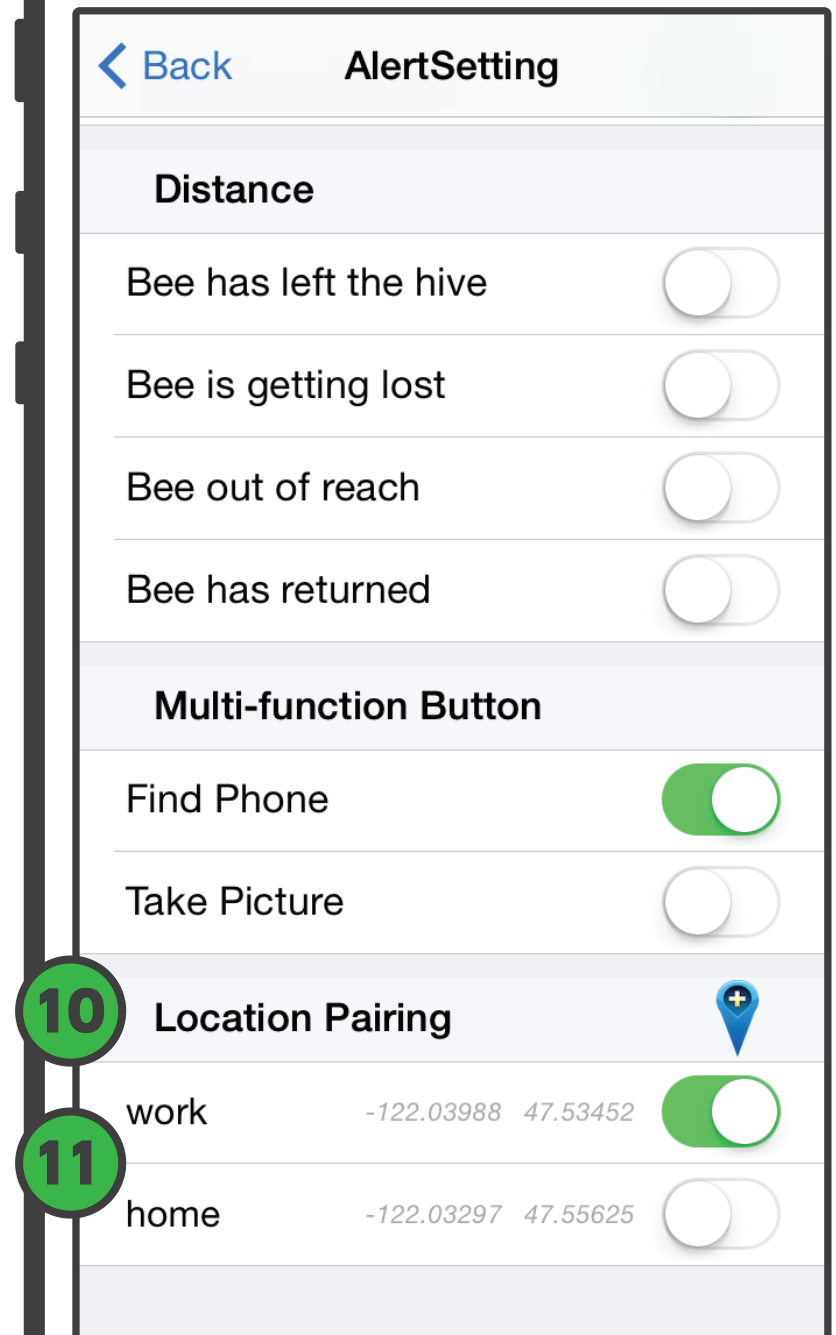
**9** Remote Control Shutter - Click the PB Button to bring up your phone camera, then click again to take any pictures. This requires the PebbleBee app to be in foreground on your phone in order to activate the camera.



## Alert Settings Page continued

**10** Location Pairing - Choose a location that you want to receive the specified alerts. Clicking the plus sign brings up a map. Click and Hold to add a new location and Name.

**11** Disable or enable specific locations at any time. Choose to make the location inclusive or exclusive (you want the alert in that location or you want the alert when not at that location) To delete or clear any unwanted location pairings, swipe sideways on entry and select delete.



## GLOBAL SETTINGS PAGE

- 1 Tap to Take or choose a picture for your Profile
- 2 Contact info will assist the PebbleBee team in case an issue arises
- 3 Turning Cloud access off allows complete privacy and prevents data from being TX/RX to/from the cloud. This reduces functionality for users, shared devices, and lost functionality.
- 3 Click to change your password

The screenshot shows the 'Setting' page of the PebbleBee app. At the top, there is a navigation bar with a back arrow, the word 'Hive', the title 'Setting', and a 'Save' button. Below the navigation bar is a profile section with a circular profile picture placeholder, marked with a green circle and the number 1. Underneath the profile picture are input fields for 'First Name' (containing 'nick'), 'Last Name', 'Address', and 'Phone', each marked with a green circle and the number 2. Below these fields is a 'Cloud Access' toggle switch, which is currently turned on (green), marked with a green circle and the number 3. At the bottom of the page is a yellow button labeled 'Change Password', marked with a green circle and the number 4. The background of the page is a blurred image of a person running on a grassy field.



## THANK YOU FOR CHOOSING THE PEBBLEBEE!

---

We hope to forge a lasting relationship with a long product line currently in development of an eco system of personal tracking and sensor devices.

For support question please contact us at **[support@pebblebee.com](mailto:support@pebblebee.com)**

For any other inquiries please contact us at **[contact@pebblebee.com](mailto:contact@pebblebee.com)**

This device complies with part 15 of the FCC rules. Operation is subject to the following two conditions:

- (1) this device may not cause harmful interference, and
- (2) this device must accept any interference received, including interference that may cause undesired operation.

Changes or modifications to this unit not expressly approved by the party responsible for compliance could void the user's authority to operate the equipment.

This device complies with Industry Canada licence-exempt RSS standard(s). Operation is subject to the following two conditions:

- (1) this device may not cause interference, and
- (2) this device must accept any interference, including interference that may cause undesired operation of the device.

Le présent appareil est conforme aux CNR d'Industrie Canada applicables aux appareils radio exempts de licence. L'exploitation est autorisée aux deux conditions suivantes :

- (1) l'appareil ne doit pas produire de brouillage, et
- (2) l'utilisateur de l'appareil doit accepter tout brouillage radioélectrique subi, même si le brouillage est susceptible d'en compromettre le fonctionnement.