

Can't connect? Need help?



DO NOT RETURN THIS  
PRODUCT TO THE STORE

Geeni support:  
[support@mygeeni.com](mailto:support@mygeeni.com)  
or tap 'Support' for help in the Geeni app.

NINGBO DIYA ELECTRIC  
APPLIANCE CO.,LTD

FCC ID:2AC2CDR-017  
Remote control socket



SMART WI-FI  
OUTDOOR  
PLUG  
START GUIDE

Model:DR-1703  
125VAC 60Hz 15A Max.1875W  
resistive or general purpose  
5A Max.625W tungsten lamp, 1/3HP

**MERKURY**  
INNOVATIONS

Thank you for purchasing your MERKURY smart home product. Get started using your new devices by downloading Geeni, one convenient app that manages everything straight from your phone or tablet. Easily connect to your home Wi-Fi and control multiple devices from the touch of your fingertips.

## Contents

Download & Register	2-4
Plug In	5
Connect (Easy Mode)	6-7
Connect (AP Mode)	8-9
Questions, Troubleshooting, Notices	10-13

### FCC Notice:

This device complies with Part 15 of the FCC Rules. Operation is subject to the two following conditions:

1. This device may not cause harmful interference.
2. This device must accept any interference received, including interference that may cause undesired operation.

Note: This equipment has been tested and found to comply with the limits for a Class B digital device, pursuant to Part 15 of the FCC Rules. These limits are designed to provide reasonable protection against harmful interference in a residential installation.

### Important Information:

Before installing, read and follow all precautions, including the following:

**CAUTION:** Suitable for use with outdoor appliances. Suitable for rain and snow when mounted vertically with plug facing downward, at least 3 ft. above ground level.

**DO NOT IMMERSE IN WATER.**

To reduce the risk of electric shock, this product has a third (grounding) pin and will only fit into a 3-prong grounded outlet. Do not use if the plug does not fit.

**DO NOT EXCEED RATED CAPACITY.**

### Support:

If you encounter any issues, please contact us at [support@mygeeni.com](mailto:support@mygeeni.com) for help. To explore our full selection of products, visit us at: [www.mygeeni.com](http://www.mygeeni.com)

© 2018 Mercury Innovations - 45 Broadway 3rd FL, New York NY 10006. The illustrated product and specifications may differ slightly from those supplied. Geeni is a trademark of Mercury Innovations LLC. iPhone, Apple and the Apple logo are trademarks of Apple Inc. registered in the U.S. and other countries. App Store is a service mark of Apple Inc. Android, Google Assistant, Google Play, and the Google Play logo are trademarks of Google Inc. Google is a trademark of Google LLC. iOS is a registered trademark of Cisco in the U.S. and other countries and is used under license. Amazon, Alexa and all related logos are trademarks of Amazon.com, Inc. or its affiliates. Cortana is a registered trademark of Microsoft Corporation. All other trademarks and trade names are those of their respective owners.

**WARNING:** This product contains chemicals known to the State of California to cause cancer and birth defects or other reproductive harm.

Made in China

## Troubleshooting

Cannot connect to your Wi-Fi network.

Make sure you entered the correct Wi-Fi password during the Wi-Fi setup. Check whether there are any Internet connection problems. If the Wi-Fi signal is too weak, reset your Wi-Fi router and try again.

## Reset the device

To Reset plugs, press and hold the power button for 3 seconds.

- Reset one time (press and hold) to reach Easy mode (Fast blinking blue)
- Reset two times (press and hold) to reach AP Mode (Slow blinking blue)

## System Requirements

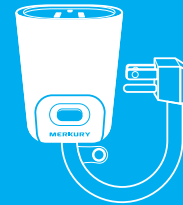
- Mobile device running iOS® 8 or higher or Android™ 4.1x or higher
- Existing Wi-Fi Network

## Technical Specifications

- |                        |   |
|------------------------|---|
| • Input voltage 125V   | • Wi-Fi standard WIFI 802.11 b/g/n                        |
| • Input frequency 60Hz | • Wi-Fi: IEEE 802.11N, 2.4GHz                             |
| • Max.load current 15A | (not compatible with 5GHz Wi-Fi networks)                 |
| • Max.Power 1875W      | • PCB Antenna, with 3dBi peak gain for 2.40-2.50GHz band. |

**CAUTION:** Suitable for use with outdoor appliances. Suitable for rain and snow when mounted vertically with plug facing downward, at least 3 ft. above ground level. **DO NOT IMMERSE IN WATER.**  
To reduce the risk of electric shock, this product has a third (grounding) pin and will only fit into a 3-prong grounded outlet. Do not use if the plug does not fit. **DO NOT EXCEED RATED CAPACITY.**

## What's in the Box

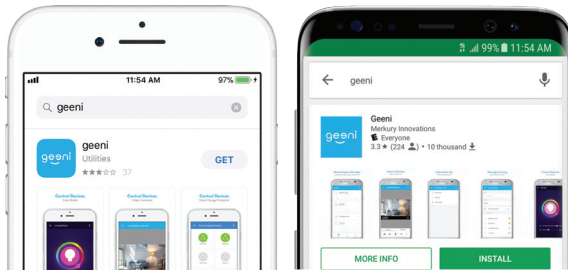


- Smart Wi-Fi Outdoor Plug
- User Manual
- Voice Control Guide

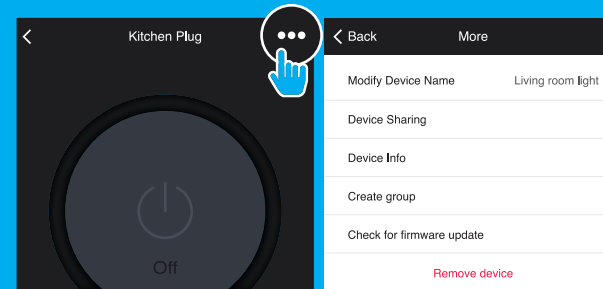
## Get Ready

- Know your Wi-Fi network and password
- Make sure your mobile device is running iOS® 8 or higher or Android™ 4.1x or higher
- Make sure you're connecting to a 2.4GHz Wi-Fi network (Geeni can't connect to 5GHz networks)

# 1 Download the Geeni app from App Store or Google Play.



2



## 5. The device appears offline or unreachable, what should I do?

Make sure your Wi-Fi router is online and in range. Make sure you have the latest Geeni functionality by clicking "Check for firmware update" in your device settings.

## 6. What's the Wireless Range?

The range of your home Wi-Fi is heavily dependent on your home router and the conditions of the room. Check with your router specifications for exact range data.

## 7. If my Wi-Fi/Internet goes down, will Geeni still work?

Geeni products need to be connected to Wi-Fi in order to use them remotely.

## Frequently Asked Questions

### 1. Can I share with family and friends?

Yes, you can share your plugs with family and friends who will have access to control your bulbs, cameras, and other Geeni devices. In the Geeni app, press the Profile button and click on the "Device Sharing" button, and you will be able to give or revoke sharing permissions. In order to share, the other user should already have downloaded the Geeni app and registered a new account.

### 2. Can I group multiple Geeni devices together?

Yes, you can group multiple devices of the same type together, by room, location, or however else you want. The same devices can be in multiple groups. For example, create a group for "Outdoor" and another group for "Entire House", and your Holiday lights can be included in both groups. From your main device list, click on one of the devices you want to group, press the "⋮" button on the top right for advanced settings, and click Create Group. You'll then be able to choose which devices you'd like to group together and will be able to rename them.

### 3. How Many Devices Can I Control?

Geeni's app can control an unlimited amount of devices in an unlimited amount of locations. Your router may have a limit of how many devices can be connected to one router.

### 4. My Geeni device has a funny name. How do I rename it?

From your main device list, click on one of the devices you want to rename, press the "⋮" button on the top right for advanced settings, and click Modify Device Name (or Modify Group Name, if applicable). You'll then be able to choose a more familiar name.

# 2

Register an account on your Geeni app.

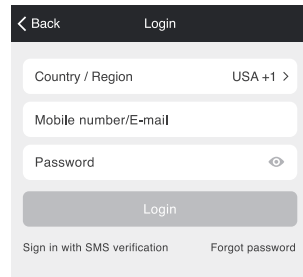
The image displays two sequential screenshots of the Geeni app's registration process. The first screenshot, titled "Register", shows a "Back" button, a country selector set to "USA" with a "+1" and a chevron, a "Mobile number/E-mail" input field, and a "Next" button. The second screenshot, also titled "Register", shows a "Back" button, a message "Verification code is sent to your phone: +1 123 1234567", a "Verification code" input field with a "Resend(52)" button, a "Please input password" input field with an eye icon, and a "Confirm" button.

**STEP 1.**  
Enter your mobile phone number  
or email address.

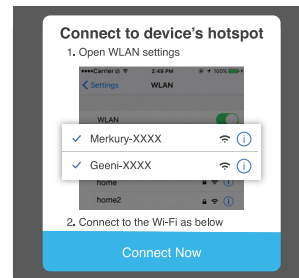
**STEP 2.**  
Enter the verification code  
and create a password.

2

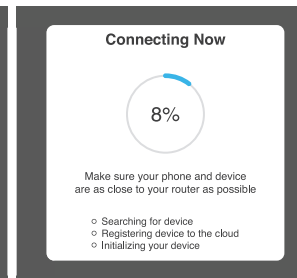
Register an account on your Geeni app.



STEP 3.  
Login to the App.



STEP 4.  
Follow the instructions to choose  
the device from your Wi-Fi list.



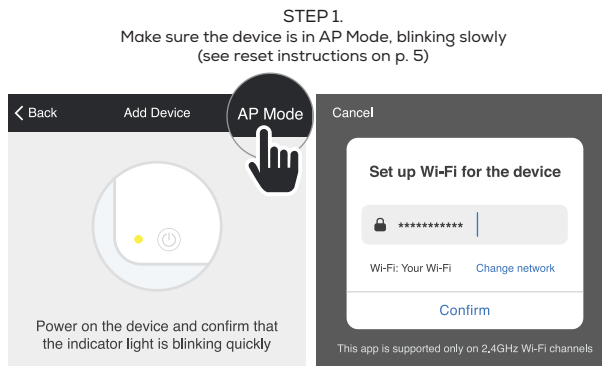
STEP 5.  
The device will connect.

4

9

# 5

## Add device. Method 2: Backup AP Mode



**STEP 2.**  
In the Geeni app, on the top corner of the Devices screen, click (+). Choose "Smart Power". Choose "AP Mode" in the top corner.

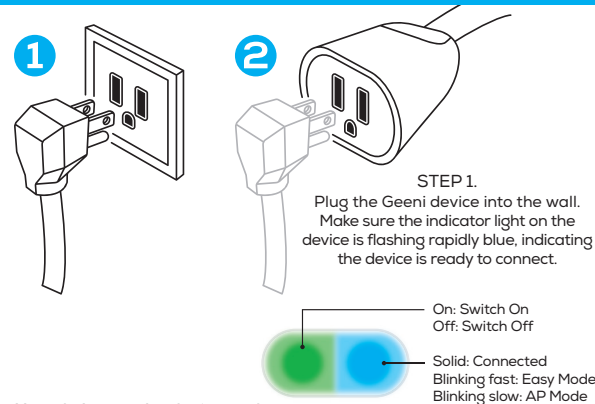
8

### STEP 1.

Make sure the device is in AP Mode, blinking slowly (see reset instructions on p. 5)

# 3

## Plug In



### STEP 1.

Plug the Geeni device into the wall. Make sure the indicator light on the device is flashing rapidly blue, indicating the device is ready to connect.

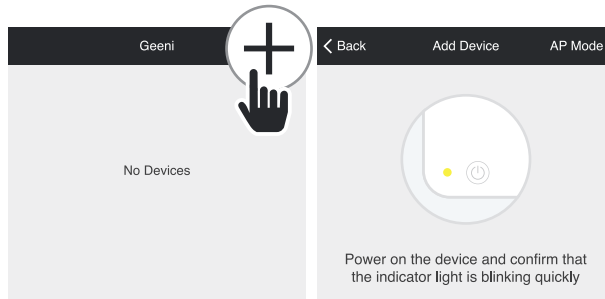
### How do I reset the device and what does the blinking light mean?

Reset the plug by pressing and holding the button for 3 seconds until the indicator light is flashing rapidly.

- Reset one time (press and hold) to reach Easy mode (Fast blinking blue, 2x per second)
- Reset again (press and hold) to reach AP Mode (Slow blinking blue, every 3 seconds)

5

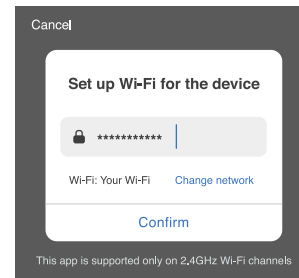
# 4 Add device. Method 1: Easy Mode



**STEP 2.**  
In the Geeni app, on the top corner of the Devices screen, click (+).

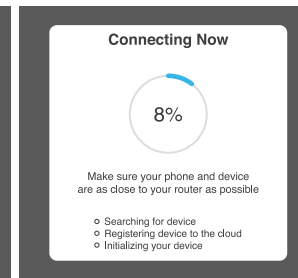
Choose "Smart Power".

**STEP 3.**  
Make sure the indicator light on the device is flashing rapidly blue, indicating the device is ready to connect using Easy Mode. If not, press and hold the Button for 3 seconds until the indicator light is flashing rapidly, then press "Next Step".



**STEP 4.**  
Enter your Wi-Fi network and password.

\*If the connection fails, try to connect using AP Mode.



**STEP 5.**  
The Geeni app will try to connect your device.

6

7



Ningbo Diya Electric Appliance Co.,Ltd  
Simen Town, Yuyao City, Zhejiang Province, China

This device complies with Part 15 of the FCC Rules. Operation is subject to the following two conditions:

- (1) this device may not cause harmful interference, and
- (2) this device must accept any interference received, including interference that may cause undesired operation.

The users manual or instruction manual for an intentional or unintentional radiator shall caution the user that changes or modifications not expressly approved by the party responsible for compliance could void the user's authority to operate the equipment. In cases where the manual is provided only in a form other than paper, such as on a computer disk or over the Internet, the information required by this section may be included in the manual in that alternative form, provided the user can reasonably be expected to have the capability to access information in that form.

For a Class B digital device or peripheral, the instructions furnished the user shall include the following or similar statement, placed in a prominent location in the text of the manual:

NOTE: This equipment has been tested and found to comply with the limits for a Class B digital device, pursuant to Part 15 of the FCC Rules. These limits are designed to provide reasonable protection against harmful interference in a residential installation. This equipment generates, uses and can radiate radio frequency energy and, if not installed and used in accordance with the instructions, may cause harmful interference to radio communications.

However, there is no guarantee that interference will not occur in a particular installation. If this equipment does cause harmful interference to radio or television reception, which can be determined by turning the equipment off and on, the user is encouraged to try to correct the interference by one or more of the following measures:

- Reorient or relocate the receiving antenna.
- Increase the separation between the equipment and receiver.
- Connect the equipment into an outlet on a circuit different from that to which the receiver is connected.
- Consult the dealer or an experienced radio/TV technician for help.

#### RF exposure warning

This equipment must be installed and operated in accordance with provided instructions and the antenna(s) used for this transmitter must be installed to provide a separation distance of at least 20 cm from all persons and must not be co-located or operating in conjunction with any other antenna or transmitter. End-users and installers must be provide with antenna installation instructions and transmitter operating conditions for satisfying RF exposure compliance.