

⚠ WARNING

Risk of electric shock

- Do not use in wet locations
- Keep away from children
- Use indoors only
- Fully insert plug into outlet

Risk of fire

- Do not exceed electrical ratings

CAUTION

Not for use with aquariums or other water-related products

SPECIFICATIONS

Electrical Rating: 125V AC, 10A, 60Hz, 1250W/625W (Tungsten)

Viatek warrants this product to be free of manufacturing defects. Should any such defect develop or become evident within one year from the date of purchase, Viatek will replace the entire product or, at its option, repair or replace the defective part(s) without charge.

Contact Viatek customer service at 888-784-2835 or at cs@viatekproducts.com to determine whether it is necessary to return the unit. To return, securely pack the entire unit. Be sure carton clearly identifies sender by name and address. Attach a letter or card describing defect and original sales receipt. Mail prepaid to the address shown below.

This warranty is void if damage or malfunction is due to abuse or failure to operate product in accordance with instructions and on recommended electrical current.

Viatek Returns

6011 Century Oaks Drive
Chattanooga, TN 37416

Register your product online at:
viatekproducts.com/register-your-product-warranty/

Customer Service # 1-888-784-2835

Visit us online at:
quirky.com
and: viatekproducts.com

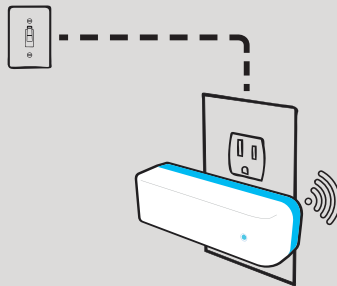
Viatek Consumer Products Group, Inc. is a licensed distributor of Quirky® products.

SwitchFlip Model# VSF-WH01 / VSF-WH01-R

DR-V02/VSF; DR-V03/VSF-R

INSTRUCTIONS

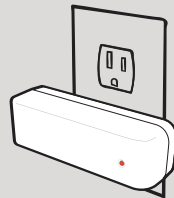
- 1 Plug the SwitchFlip® transmitter into a switch-controlled outlet



Item# VSF-WH01
DR-V02/VSF

REV070717

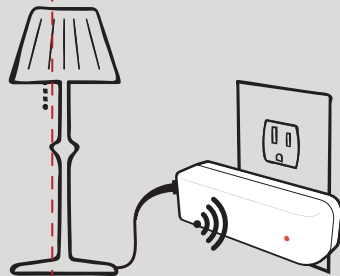
- 2 Plug the SwitchFlip® receiver into any standard outlet



Made In China
DR-V03/VSF-R

Item# VSF-WH01
Model# VSF-R

- 3 Control your preferred outlets with SwitchFlip® receivers and one switch



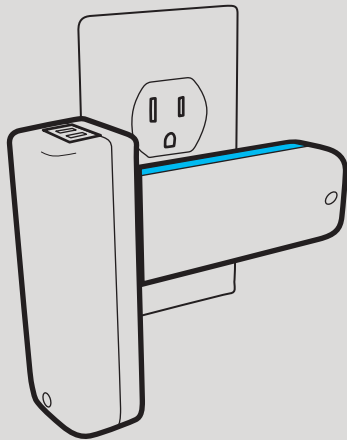


Erin wanted to control any outlet with a flip.

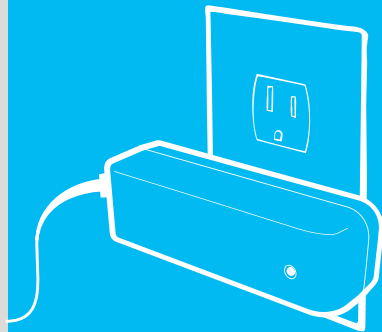
He brought his project to Quirky® to help him make SwitchFlip® a reality.

SYNCING

Your Switchflip® transmitter and receiver should already be synced if they came as part of a set. However, if you find the receiver is not responding, simply plug it into the transmitter while the transmitter is plugged into the switched outlet. The receiver's LED will turn on with a soft click, and that's it. They're synced! Sync multiple receivers using the same method.



Quirky®



SwitchFlip®
wireless outlet controller

This device complies with Part 15 of the FCC Rules. Operation is subject to the following two conditions: (1) this device may not cause harmful interference, and (2) this device must accept any interference received, including interference that may cause undesired operation.

(b) For a Class B digital device or peripheral, the instructions furnished the user shall include the following or similar statement, placed in a prominent location in the text of the manual:

NOTE: This equipment has been tested and found to comply with the limits for a Class B digital device, pursuant to Part 15 of the FCC Rules. These limits are designed to provide reasonable protection against harmful interference in a residential installation. This equipment generates, uses and can radiate radio frequency energy and, if not installed and used in accordance with the instructions, may cause harmful interference to radio communications.

However,

there is no guarantee that interference will not occur in a particular installation.

If this equipment does cause harmful interference to radio or television reception, which can be determined by turning the equipment off and on, the user is encouraged to try to correct the interference by one or more of the following measures:

- Reorient or relocate the receiving antenna.
- Increase the separation between the equipment and receiver.
- Connect the equipment into an outlet on a circuit different from that to which the receiver is connected.
- Consult the dealer or an experienced radio/TV technician for help.

This device complies with part 15 of the FCC Rules. Operation is subject to the following two conditions:

- (1) This device may not cause harmful interference, and
- (2) this device must accept any interference received, including interference that may cause undesired operation

Printing details

PART # : Instructions for Switchflip® Model Numbers:
VSF-WH01

STOCK : 140G W/F, 2+2C

FLAT DIMS : 250 × 76 mm

COLORWAYS : 1

SPECIAL INSTRUCTIONS : Z-fold

PAGES : 1-2

Colors



Black
100%
Grayscale



Cyan
80%

Finishing

Cut



Score

