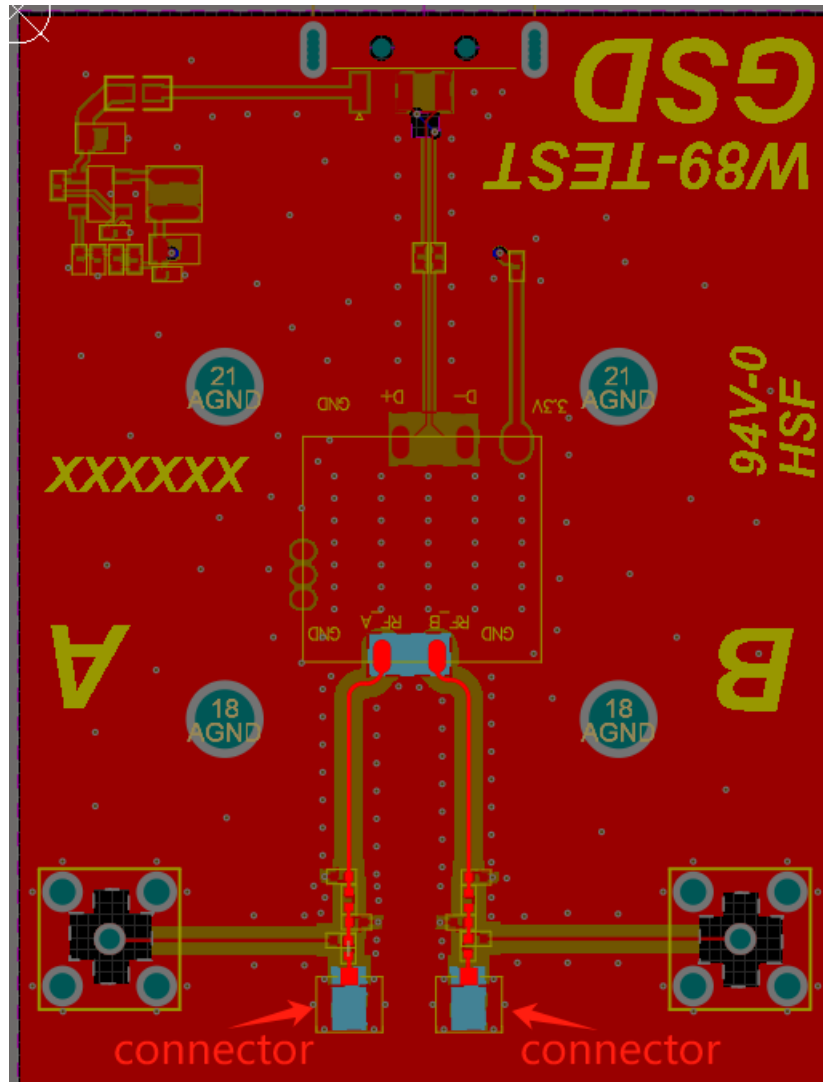
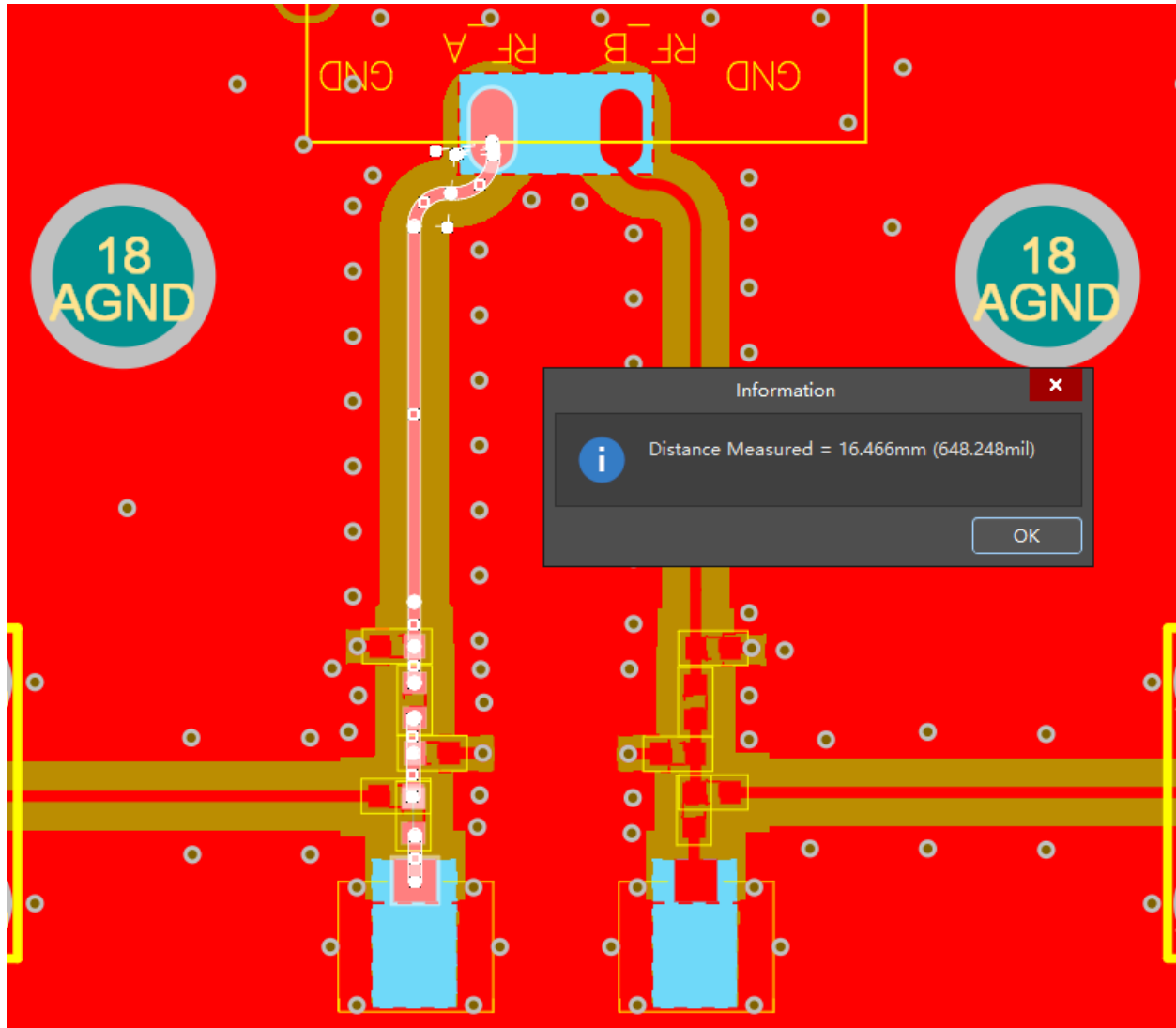


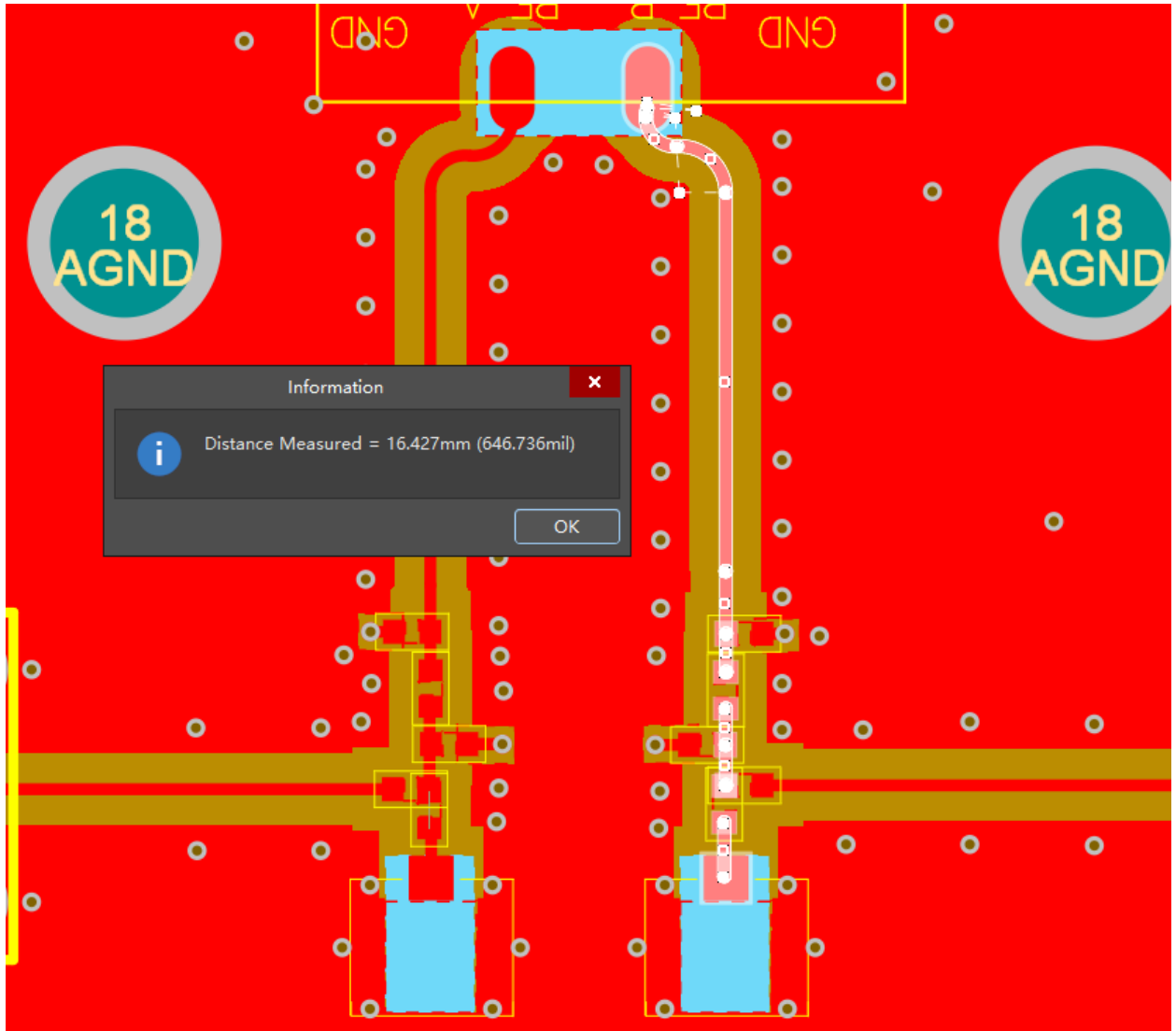
## User manual Supplementary information

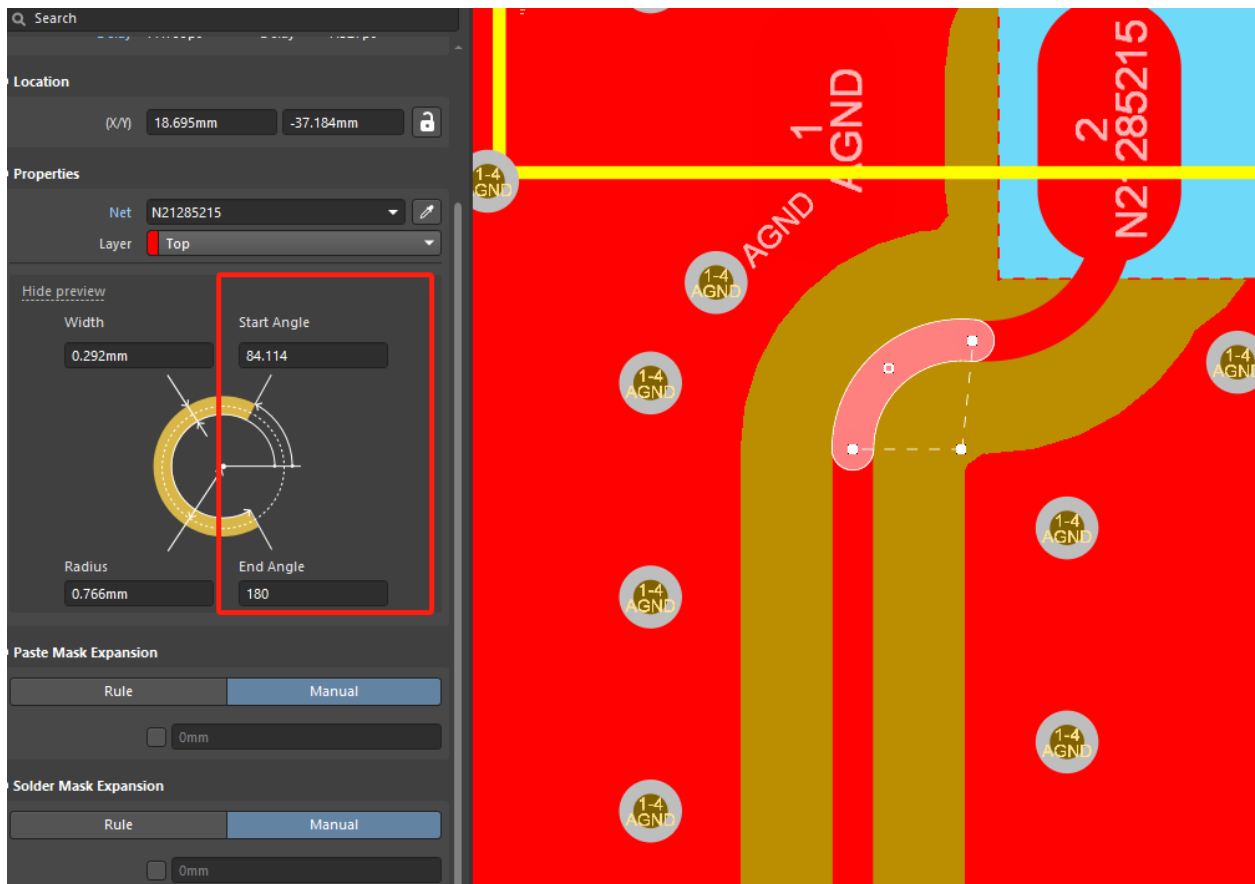
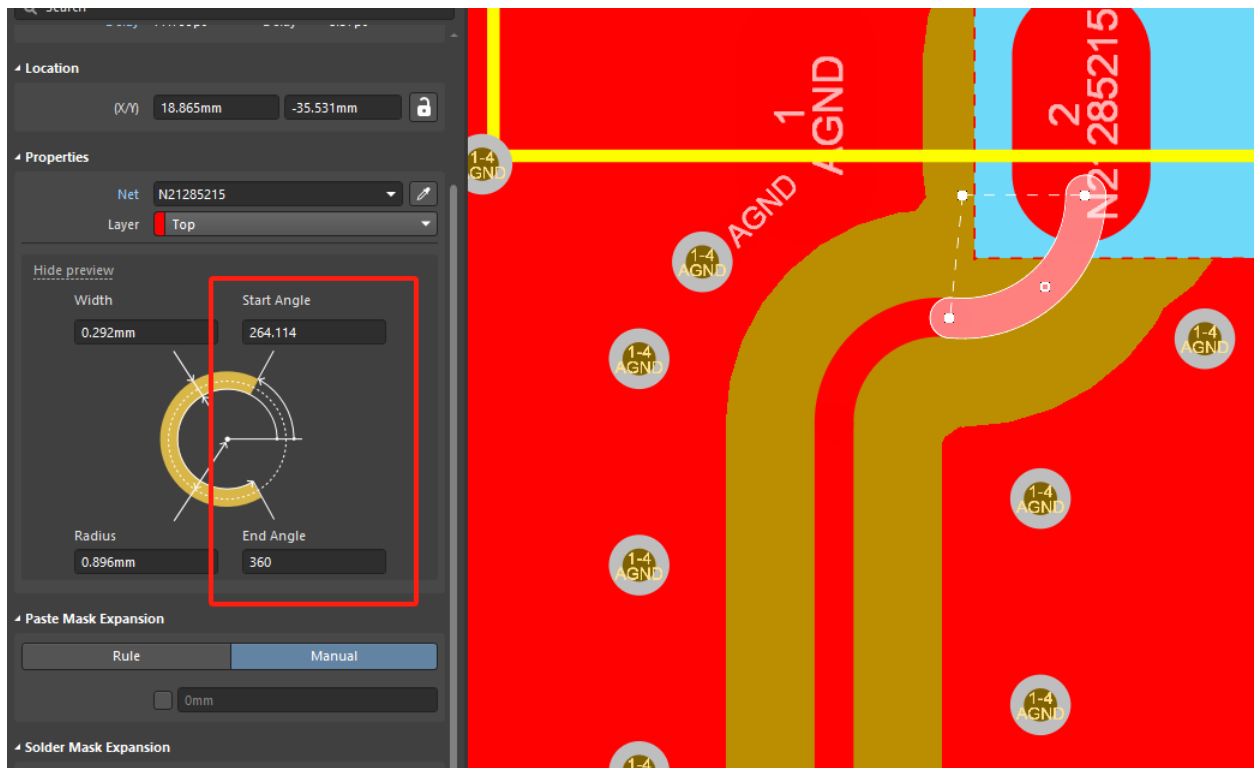
- a) Trace layout and dimensions including specific designs for each type:  
1. Layout of trace design, parts, antenna, connectors, and isolation requirements:

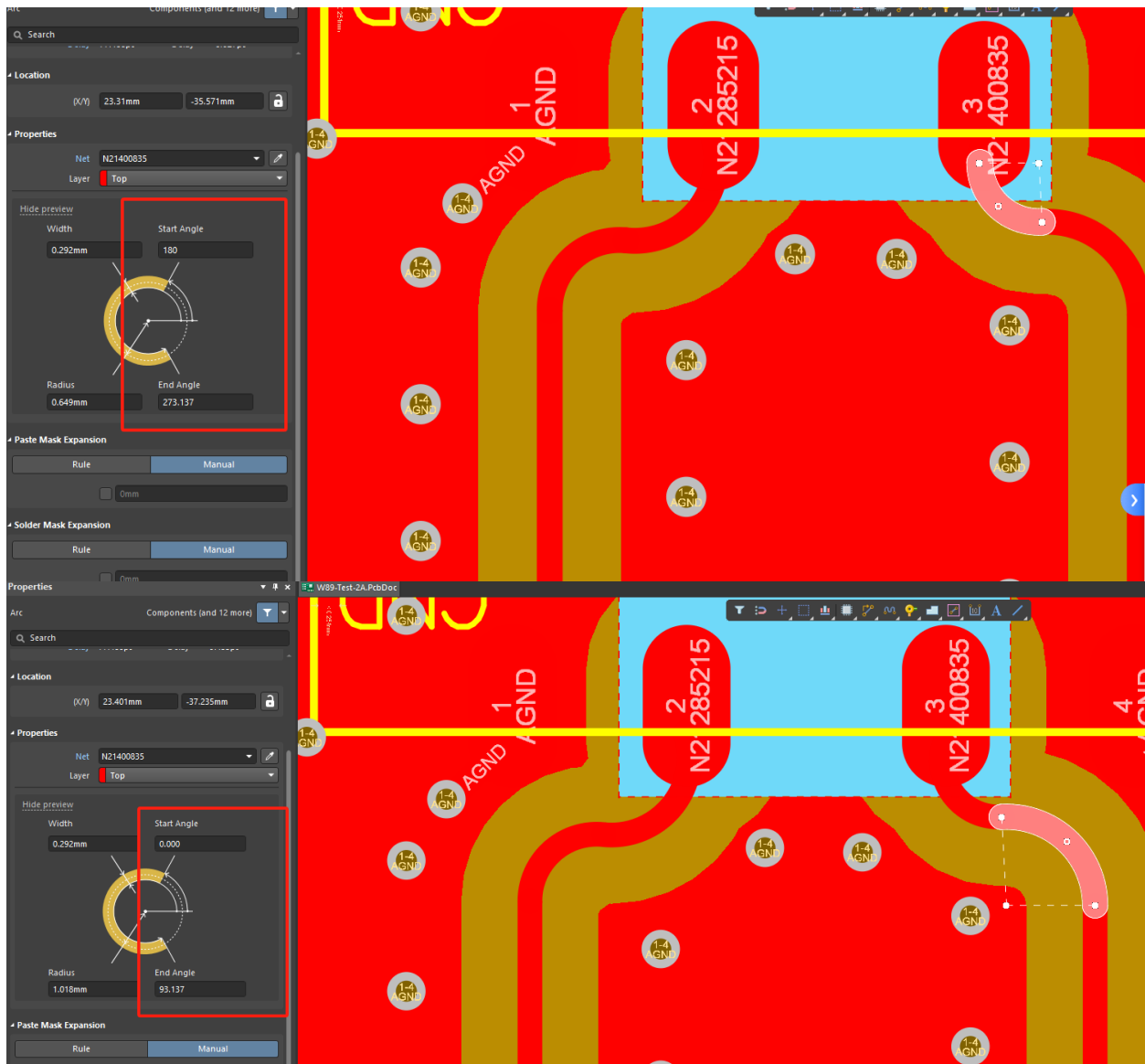


2. Boundary limits of size, thickness, length, width, shape(s), dielectric contain, and impedance must be clearly described for each type of antenna:  
PCB Antenna trace antenna Dimension:



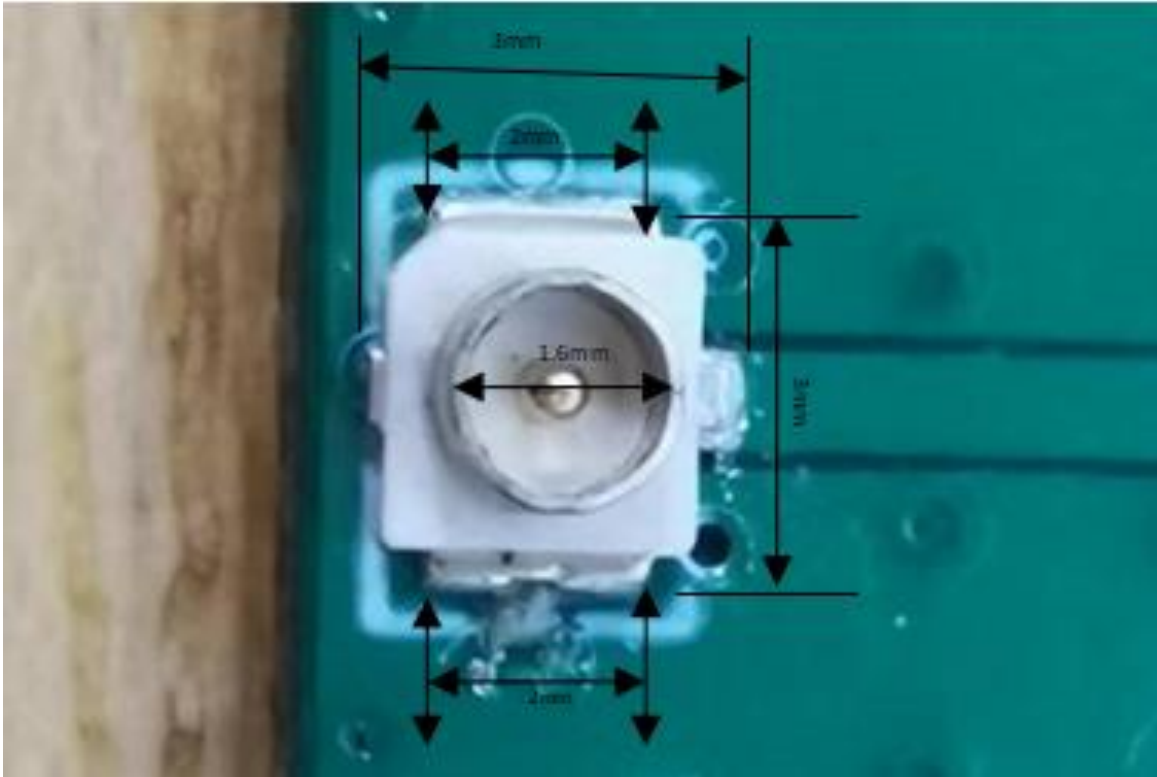






Note: 1. RF trace between module RF pinout to antenna width is 0.292mm.  
 2. RF trace between module and antenna impedance is 50ohm.

IPEX connector information:  
 Size:



Connector 1	IPEX	Male pin	50Ω	Surface mount	varies
-------------	------	----------	-----	---------------	--------

b) Appropriate parts of manufacturers and specifications:

Information about devices on RF lines:

Parts list	Parts number	Size	Manufacturer
Tuning 1/0Ω	/	0201	varies

If customers completely refer to our antenna design for their own design, the antenna performance should also be the same as ours.

C) Test procedures and design verifications:

Customer product development and design

- > Must copy the RF traces of the DXF file on the board completely. Follow up PCB design rule and PCB stack.



- > Design Input

- > Review customer design

RF circuit matching and components selection confirmation

- > Design output



- > Customer Validate the design until it satisfies the needs

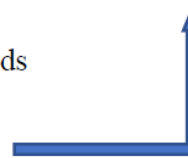
and FCC/IC requirements



Successfully validated design goes for production



Process monitoring need for improvement



d) Production test procedures for ensuring compliance

