

# IP-COM

## Quick Installation Guide Ceiling AP Series

### Package contents

- Wireless ceiling AP x 1
- Screws x 1
- Accessible Screws, plastic nuts, and plastic anchors
- Quick installation guide x 1

First time installing or upgrading, please keep the original packaging and contact the local distributor or distributor immediately.  
The Quick installation guide is available in multiple languages. For more product details, please go to the product page.

## 1. Getting to know your AP

**LED Indicator**

LED Indicator	Status	Description
Power	Light on	The system is starting.
SYS	Light on	The system is connected to the system factory.
WLAN	Light on	The system is working properly.
WiFi	Light on	The AP is powered on and LED indicator has been installed using the web UI of AP.

**DC Power Jack**

DC power jack. You can use a power adapter to supply power for the AP.

Port/Button	Description
LAN	It is a 10/100/1000 Mbps wide-range network port used to connect data or supply PoE power for the AP using Ethernet cables.
RESET	When the AP is powered on, you can use the RESET button to reset the AP.
PWR	DC power jack. You can use a power adapter to supply power for the AP.

**Buttons:**  
The power specification may vary. Before powering on, check if the power sourcing equipment you use complies with your AP.

## 2. Installing your AP

### Ceiling installation

1 Position the bracket on the ceiling and mark screw holes on the ceiling with the marker.



2 Drill holes in the marked positions using a hammer drill.



3 Use Option A to insert plastic anchors for ceilings with weak strength back or plasterboard, please choose Option B.

Option A: Knock the plastic anchors into the holes using the rubber hammer. Then use the screwdriver to tighten the screws into the plastic anchors. **Use your eye of 1.2 mm margin between the screws and the rubber hammer.**



Option B: Align the plastic nuts with the holes in the ceiling and use the included screws to the bracket.



4 Connect a CAT5 or better cable to the LAN port of the AP. Connect a PoE switch to the PoE port, or a power adapter to the PWR jack to supply power for the AP. Before powering on, check if the power sourcing equipment you use complies with your AP.



5 Insert the slots of the AP into the hooks of the bracket, and push the AP to one side until you hear a click.



### Wall mounting

1 Position the bracket on the wall, and mark screw holes on the wall with the marker.



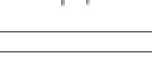
2 Drill holes in the marked positions using a hammer drill.



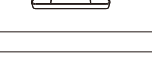
3 Knock the plastic anchors into the holes using the rubber hammer. Then use the screwdriver to tighten the screws into the plastic anchors. **Use your eye of 1.2 mm margin between the screws and the rubber hammer.**



4 Connect a CAT5 or better cable to the LAN port of the AP. Connect a PoE switch to the PoE port, or a power adapter to the PWR jack to supply power for the AP. Before powering on, check if the power sourcing equipment you use complies with your AP.



5 Insert the slots of the AP into the hooks of the bracket, and push the AP to one side until you hear a click.



6 Align the wall-mounting holes on the bracket with the screws to mount it.



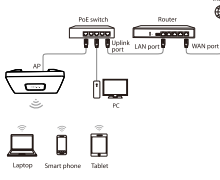
## 3. Connecting and Configuring your APs

### Scenario 1: Deploying your network without a management device for IP-COM AP

1 Connect and configure your APs one by one. Then to set up, connect one AP to your PoE switch and configure it. After finished, connect to second AP and so on.

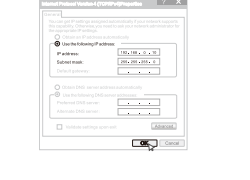
#### 1 Connect devices

Connect your AP to the LAN port of the PoE switch using an Ethernet cable. Refer to the following figure for detailed connection.



#### 2 Configure the IP address of your computer (Example: Win10)

Right-click the network adapter on the right corner of your computer. Click Network and Sharing Center > Change adapter settings. Right-click the Ethernet network Properties. Click IPv4. Select Protocol Version 4 TCP/IPv4. Select Use the following IP addresses. Set IP address to 192.168.0.2 to 2.23 and Subnet mask to 255.255.255.0, and click OK.



#### 3 Log in to the web UI of the AP

Right-click the network adapter on the right corner of your computer. Click Network and Sharing Center > Change adapter settings. Right-click the Ethernet network Properties. Click IPv4. Select Protocol Version 4 TCP/IPv4. Select Use the following IP addresses. Set IP address to 192.168.0.2 to 2.23 and Subnet mask to 255.255.255.0, and click OK.



#### 4 Modifying the IP address of the AP

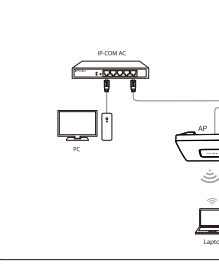
Click the WebUI Settings > LAN Setup. Modify the IP address of the AP to 192.168.0.1 or 2 to 2.23, and ensure that the new IP address has not been used in the network. Click Save.



### Scenario 2: Deploying your network with an IP-COM access controller (AC)

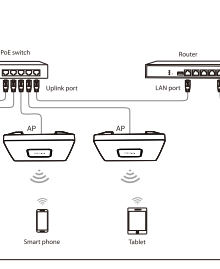
#### 1 Connect devices

Use Ethernet cables to connect APs to PoE ports of the switch, refer to the following figure for detailed connection.



#### 2 Configure APs

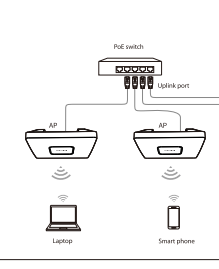
Start a web browser on your computer and log in to the web UI of the AC. Refer to your AC's user guide for detailed instructions.



### Scenario 3: Deploying your network with an IP-COM router that includes the AC functionality

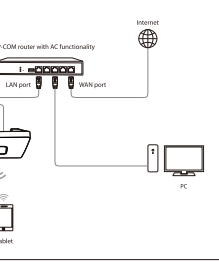
#### 1 Connect devices

Use Ethernet cables to connect APs to PoE ports of the switch, refer to the following figure for detailed connection.



#### 2 Configure APs

Start a web browser on your computer and log in to the web UI of your IP-COM router. Refer to the router's user guide for detailed instructions.



### FAQ

#### Q1. I cannot access the web UI of the AP after entering 192.168.0.254.

- A1. Try the following solutions:**
- Check if your Ethernet cables are connected properly. If yes, the corresponding LED indicator lights on.
  - Ensure that the IP address of your computer has been set to 192.168.0.2 to 2.23, and the IP address is not used by any other devices in the network.
  - Clear the cache of your web browser, or replace the web browser.
  - Disable the firewall of your computer, or replace the computer.
  - If one or more APs are connected in the network without an AP controller, you should leave only one AP in the network first and configure the AP's IP address. Then repeat the procedure to change the IP addresses of the other APs. Meanwhile, ensure that the APs share IP addresses in the same network segment with the IP address of your computer. Then by logging in to the AP's web UI using their new IP addresses.
  - The AP may be being managed by an AC and therefore its IP address is no longer 192.168.0.254. In this case, go to the web UI of the AC to view the new IP address of the AP and then log in to the AP's web UI using the new IP address.
  - If the problem persists, reset the AP.

#### Q2. My wireless AC cannot find the AP. What should I do?

- A2. Try the following solutions:**
- Check if you press the IP-COM AC. The AP can only be managed by IP-COM AC.
  - Ensure that all the devices in the network are connected properly and the AP has completed startup.
  - If WLANs have been defined in your network, verify that the corresponding WLAN has been added to your AC.
  - Restart the AP.
  - Ensure that the firmware versions of your AP and AC are the same as the latest firmware versions available on <http://www.ip-com.com.cn>.
  - Reset your AP.

#### Q3. How to upgrade my AP?

- A3. Perform as follows:**
1. Choose your firmware version and download it from our official website <http://www.ip-com.com.cn>.
  2. Upload the file you downloaded.
  3. Log in to the web UI of the AP. Choose **Tools > Maintenance**, and navigate to the **Firmware Upgrade** section. Click **Upgrade**, select and upload the file ending with **.bin** from the file folder you just upload, and click **Upgrade**.
  4. After successful upgrade, reset your AP to apply your settings.
- Q4. How to reset my AP?**
- A4.**
- Option 1:** Restoring the factory default.  
When the SYS LED indicator of the AP starts, hold down the **RESET** button for about 5 seconds. The AP is reset successfully when the SYS LED indicator lights solid on.
- Option 2:** Reset using the web UI.  
Log in to the web UI of the AP. Choose **Tools > Maintenance**, and navigate to the **Reset** section, then follow the on-screen instructions to reset it.
- Note:** Restoring clears all configurations of your AP.

### CE Marking Warning

This is a Class B product in a domestic environment. This product may cause radio interference, in which case the user may be required to take adequate measures. Operations in the U.S.S.A. or U.S. are limited to indoor use only. This equipment should be installed and operated with minimum distance 20cm between the device and your body. The main plug is used as a disconnect device. The disconnect device shall remain readily operable. NOTE: The manufacturer is not responsible for any radio or interference caused by unauthorized modifications to this equipment. It is recommended to use a shielded BNC cable.

### RECYCLING

This product bears the selective sorting symbol for Waste electrical and electronic equipment (WEEE). This means that this product must be handed over to a European directive 2012/19/EU in order to be recycled or dismantled to minimize its impact on the environment. User has the choice to give his product to a competent recycling organization or to the retailer where he bought his new electrical or electronic equipment.

**Declaration of Conformity**  
Honorably, IP-COM Networks Co., Ltd. declares that the radio equipment type W303AP is in compliance with Directive 2014/53/EU. The full text of the Declaration of Conformity is available at the following internet address: <http://ip-com.com.cn/cv/ce.html>

Operating Frequency: 2.4GHz ~ 2.422GHz ~ 2.472GHz  
ERP Power (MWE): 23dBm ~ 23dBm  
SFRP Power (MWE): 23dBm ~ 23dBm  
Software Version: V1.0.3

### FCC Statement

This equipment has been tested and found to comply with the limits for a Class B digital device, pursuant to Part 15 of the FCC Rules. These limits are designed to provide reasonable protection against harmful interference in a residential installation. This equipment generates, uses and can radiate radio frequency energy and, if not installed and used in accordance with the instructions, may cause harmful interference to radio communications. However, there is no guarantee that interference will not occur in a particular installation. If this equipment does cause harmful interference to radio or television reception, which can be determined by turning the equipment off and on, the user is encouraged to try to correct the interference by one or more of the following measures:

- Reorient or relocate the receiving antenna.
- Increase the separation between the equipment and receiver.
- Connect the equipment into an outlet on a circuit different from that to which the receiver is connected.
- Consult the dealer or an experienced radio/TV technician for help.

### Radio Frequency Statement

The device is for indoor usage only. Operation is subject to the following two conditions: (1) this device may not cause harmful interference, and (2) this device must accept any interference received, including interference that may cause undesired operation. This device complies with FCC radiation exposure limits set forth for an uncontrolled environment and also complies with Part 15 of the FCC RF Rules. This equipment should be installed and operated with minimum distance 20cm between the device and your body. **Caution:** Any changes or modifications not expressly approved by the party responsible for compliance could void the user's authority to operate this equipment. This transmitter must not be co-located or operating in conjunction with any other antenna or transmitter. **NOTE:** The manufacturer is not responsible for any radio or interference caused by unauthorized modifications to this equipment. It is recommended to use a shielded BNC cable.

Operating temperature: -10°C ~ 40°C  
Operating humidity: 10% ~ 90% RH non-condensing  
Storage temperature: -30°C ~ 70°C  
Storage humidity: 0% ~ 90% RH non-condensing

For EUTECTA, this product can be used in the following countries:

	AT	BE	BG	CZ	DE	DK	ES	FR	GB	GR	IE	IT	PL	PT	RO	SE	SI	SK	TR
IP-COM	Y	Y	Y	Y	Y	Y	Y	Y	Y	Y	Y	Y	Y	Y	Y	Y	Y	Y	Y

Address: IP-COM Networks Co., Ltd. 101, Leis A, 1st Floor, Tower C3, 100,100, Zhongguancun East Road, Haidian District, Chaoyang, China 100080

Technical Support: Tel: 86 20 75 278 2699 Email: [ip-com@ip-com.com](mailto:ip-com@ip-com.com) Website: <http://www.ip-com.com.cn>

Copyright © 2019 IP-COM Networks Co., Ltd. All rights reserved.

This document includes technical changes, errata and product specific functions, etc. In the reference table, IP-COM reserves the right to make changes to the product described in this document without obligation to notify any person or organization of such revisions or changes.