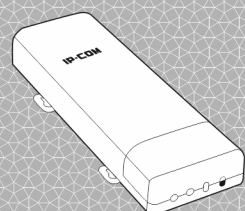


105.00 mm 525.00 mm

143.00 mm

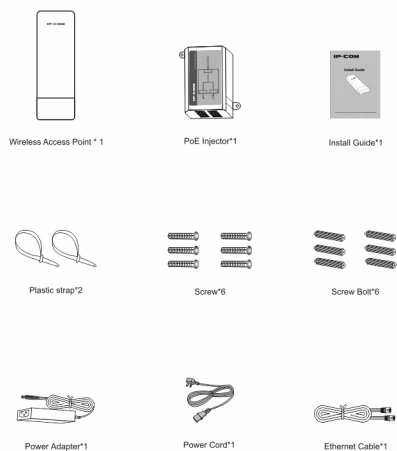
IP-COM

Install Guide



Please read this Install Guide carefully before you start. For information that is not covered here, you can visit our website at <http://www.ip-com.com.cn>

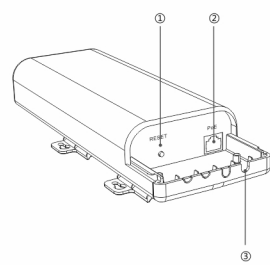
Package Contents



If any item is incorrect, missing, or damaged, please keep the original package and contact your reseller for immediate replacement.

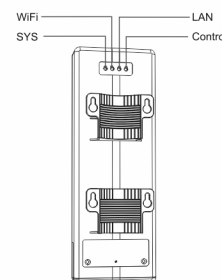
1 Get to Know Your AP

Front View



Item	Port / Button	Description
①	RESET	Pressing and holding the reset button for over 7 seconds restores this device to factory defaults.
②	PoE	This port provides power over an Ethernet connection via the PoE injector or an IEEE 802.3at-compliant PoE device. And it also works as a 10/100/1000Mbps LAN port.
③	/	Cable access hole cut-outs

Rear View

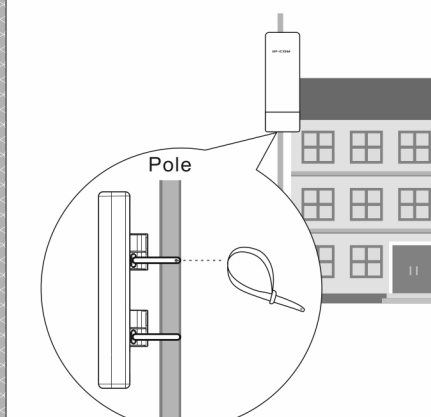


LED	Status	Description
SYS	Off	Malfunction occurs or the device is not powered on.
	Solid	Malfunction occurs.
	Blinking	The device is working properly.
WIFI	Off	WiFi is disabled.
	Solid	WiFi is enabled.
	Blinking	Data transmission is occurring.
LAN	Off	There is no device linked to this port.
	Solid	There is a device linked to this port but no data transmission.
	Blinking	Data transmission is occurring on the LAN port.
Control	Off	The device isn't managed by an AC.
	Solid	The device is managed by an AC successfully.

2 Install Your AP

Step 1: Mount the AP

Set up the AP in an outdoor location, usually on the roof, and thread plastic wraps through grooves underneath the brackets. Then attach the device firmly to a solid pole.

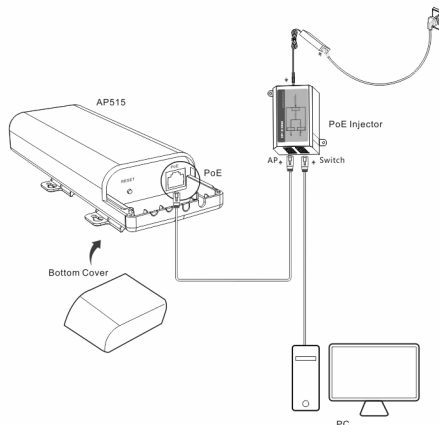


平面设计图框

图框 比例 1:1 单位: mm

Step 2: Connect the AP

- Slide the bottom cover of the AP down to expose the port.
- Connect the PoE port of the AP to the AP port of the PoE injector with an Ethernet cable.
- Connect your computer to the Switch port of the PoE injector with an Ethernet cable.
- Connect the included power adapter to the PoE injector, connect the power adapter to the included power cord and plug the power cord into an outlet for power supply.
- Gently replace the bottom cover by sliding it up until it clicks into place.



3 Configure PC

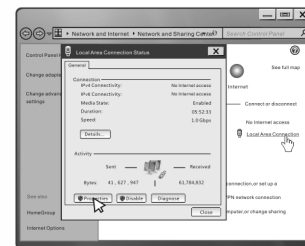
* Take Windows 7 as an example

- Click the icon on the bottom right corner of your desktop.
- Click **Open Network and Sharing Center**.

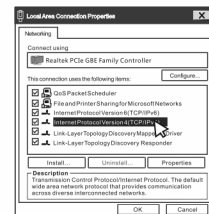


Tips
If you cannot find the icon on the bottom right corner of your desktop, follow steps below: Click Start > Control Panel > Network and Internet > Network and Sharing Center.

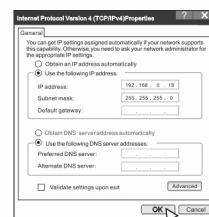
Step 3: Click Local Area Connection > Properties.



Step 4: Find and double click Internet Protocol Version 4(TCP/IPv4).



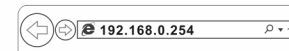
Step 5: Select Use the following IP address, type in the IP address: 192.168.0.x (2-253), Subnet mask: 255.255.255.0 and click OK.



Step 6: Click OK on the Local Area Connection Properties window (see Step 4 for the screenshot).

4 Configure the AP

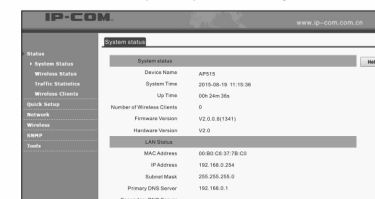
Step 1: Input 192.168.0.254 in a web browser's address bar, and then press Enter or Return on your keyboard (if the following page does not appear, please press RESET button to restore to factory default settings).



Step 2: Enter the default username and password (admin for both defaults) and click



Step 3: Then you will be successfully directed to the web UI of the AP. For more settings, visit our website at <http://www.ip-com.com.cn> to get the User Guide of this AP.



Safety & Emission Statement



CE Mark Warning
This is a Class B product. In a domestic environment, this product may cause radio interference, in which case the user may be required to take adequate measures. This device complies with EU 1989/EC.
NOTE: (1) The manufacturer is not responsible for any radio or TV interference caused by unauthorized modifications to this equipment. (2) To avoid unnecessary radiation interference, it is recommended to use a shielded RJ45 cable.



FCC Statement
This device complies with Part 15 of the FCC Rules. Operation is subject to the following two conditions: (1) This device may not cause harmful interference, and (2) this device must accept any interference received, including interference that may cause undesired operation.
This equipment has been tested and found to comply with the limits for a Class B digital device, pursuant to Part 15 of the FCC Rules. These limits are designed to provide reasonable protection against harmful interference in a residential installation. This equipment generates, uses and can radiate radio frequency energy and, if not installed and used in accordance with the instructions, may cause harmful interference to radio communications. However, there is no guarantee that interference will not occur in a particular installation. If this equipment does cause harmful interference to radio or television reception, which can be determined by turning the equipment off and on, the user is encouraged to try to correct the interference by one of the following measures:

- Reorient or relocate the receiving antenna.
- Increase the separation between the equipment and receiver.
- Connect the equipment into an outlet on a circuit different from that to which the receiver is connected.
- Consult the dealer or an experienced radio/TV technician for help.

FCC Caution: Any changes or modifications not expressly approved by the party responsible for compliance could void the user's authority to operate this equipment.
This transmitter must not be co-located or operating in conjunction with any other antenna or transmitter.
The manufacturer is not responsible for any radio or TV interference caused by unauthorized modifications to this equipment.
Radiation Exposure Statement:
This equipment complies with FCC radiation exposure limits set forth for an uncontrolled environment. This equipment should be installed and operated with minimum distance 20cm between the radiator & your body.
NOTE: (1) The manufacturer is not responsible for any radio or TV interference caused by unauthorized modifications to this equipment. (2) To avoid unnecessary radiation interference, it is recommended to use a shielded RJ45 cable.



Shenzhen IP-COM Networks Co., Ltd.
Address: Room 101, Unit A, First Floor, Tower E3, No. 1001, Zhongshanyuan Road, Nanshan District, Shenzhen, China. 518052
Tel: (86 755) 2765 3069
Email: info@ip-com.com.cn
<http://www.ip-com.com.cn>

IP-COM is the registered trade mark of Shenzhen IP-COM Network Co., Ltd.
All the photos and names mentioned herein are the trade marks or registered trade marks of their respective holders. © 2015 IP-COM All Rights Reserved.

物料名称: AP515V1.0-E01安装指南

物料编码: 10027872

适用机型: AP515V1.0-E01

版本号:

尺寸: 折后105.00*143.00mm

材料: 70g书写纸

印刷: 双面单黑

公差: ±1mm

工艺: 风琴五折页

耐破:

打样数量: 5

其它

设计:

校对:

批准:

日期: 2015.07.29