

UE 美版\_OnePlus Almond\_用户手册

出货区域:

加拿大、美国

语言:

英语

技术要求:

尺寸: 105×51mm

材质: 128g哑粉纸, 正反面过哑油

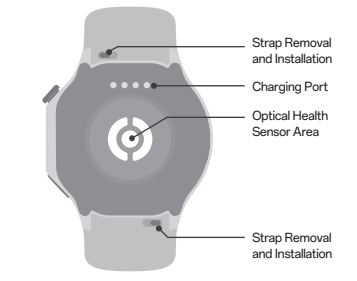
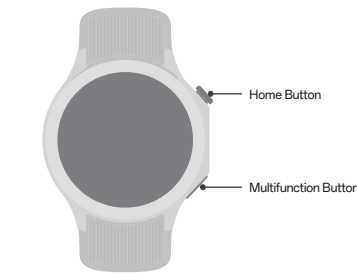
颜色: 单色

页数: XXp

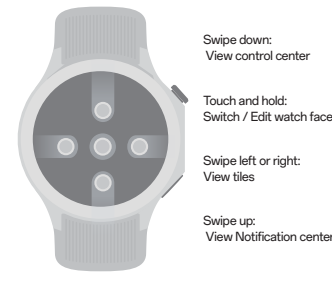
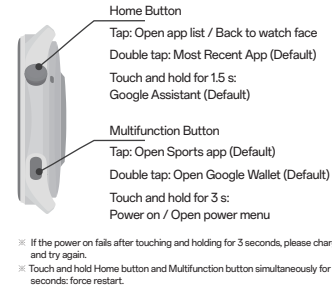
装订方式: 风琴折

User Manual

Product Overview



Buttons and Touch



Packing list

- Watch body x1
- USB-C charging cable x1
- Strap x1
- User Manual x1
- Charging pad x1

Charging

- Align and fit the watch's charging port with the metal contacts on the charging pad until the battery level indication appears on the watch screen.
- Please use the charging pad and USB-C charging cable provided with the device to charge the device.
- Watch VOOC flash charge: if the battery temperature is between 20-40 °C and the rated output of the adaptor is 5 V = 2 A or above and it meets the requirements, the watch will flash charge.
- To avoid corrosion of metal contacts or any other undesirable effects caused by residual sweat, please ensure that the charging port is clean and dry before charging is begun.
- To protect the battery life, please charge your device promptly before the battery is completely depleted.
- If the device is stored for a long time, it should be recharged every 3 months to prevent the battery from being over-discharged and rendered inoperable.

Data transmission via Bluetooth

When connected to the phone, the watch will instantly synchronize some data with the phone via Bluetooth, including contacts, call history, notification information, sports health data, and so on. The data will not be synchronized if the connection is disconnected or Bluetooth is disabled.

Connecting a watch

**Download app:** Search for "OneHealth" apps in Google Play, download and install it. Pair and connect the watch. After successful connection, check the connection status, manage the watch face, and view the health information in the app.

Pair and connect a watch:

- After the device is powered on, select the system language and view the device name as instructed.
- "Device" > "Add Device" in "OneHealth" app, select the corresponding device, select the device name displayed on the watch, and follow the screen prompts to complete the connection.

NFC Description

This product is equipped with NFC chip and supports Google Wallet. You can open Google Wallet on your watch and follow the instructions to add bank cards and public transportation cards.

**Notes on using the watch's NFC function:**  
(1) Comply with the requirements of the "Catalog and Technical Requirements for Micropower Short-range Radio Transmitting Devices" for general-purpose micropower devices, Class C devices, with an antenna type of coil. NFC can be enabled via the following path: tap Home button to enter the Apps list, and tap "Settings" > "Connection" > "NFC".

- There shall be no unauthorized changes in the scene of use or conditions of use, expansion of the range of transmitting frequencies, increase in transmitting power (including additional installation of RF power amplifiers), or unauthorized changes in the transmitting antenna.
- It shall not cause harmful interference to other lawful radio stations (stations), nor shall it request protection from harmful interference;
- It shall withstand interference from industrial, scientific and medical (ISM) application devices that radiate RF energy or other legitimate radio station (stations) interference;
- If harmful interference is caused to other legitimate radio stations (stations), the use shall be stopped immediately and measures shall be taken to eliminate the interference before continued use;

(6) The use of micropower equipment in aircraft and in the electromagnetic environmental protection areas of radio astronomy stations, meteorological radar stations, satellite earth stations (including measurement and control, ranging, receiving and navigation stations) and other military and civilian radio stations and airports designated in accordance with laws, regulations, state regulations, and standards shall comply with the electromagnetic environmental protection and the provisions of the competent authorities in respect of the relevant industries:  
(7) It is prohibited to use all types of model remote controls within a radius of 5,000 meters from the center of the airport runway.  
(8) Please use the device within the temperature range of 0-35°C. Battery voltage: 3.89 V.

Software information

Software version: OPWWE231\_11\_A02  
For the most recent information about accessories and software, please see the Doc "Declaration of Conformity" at <http://service.oneplus.com/global/user-manual>

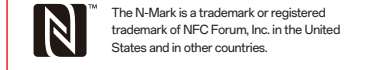
SAR Value

FCC/ISED SAR  
Limb SAR: 0.57 W/kg  
Front of face SAR: 0.33 W/kg (Head SAR limit is also applicable for the front of face SAR)  
Front of face SAR test for the face approaching scene has been carried out at a distance of 1 cm from the front of the device, and the SAR test of the wrist-worn scene has been carried out under the condition of direct contact with the back of the device. To comply with RF exposure guidelines during the face approaching use, the device should be positioned at least 1 cm from the face.  
The SAR values above are the highest values reported for the device.

Performance Parameters

Product name: Smart Watch  
Model: OPWWE231  
Dimension: 47.0 × 46.6 × 12.1 mm (Excluding sensor area)  
Display screen: 1.43 inches  
Battery type: rechargeable lithium-ion battery packs  
Battery capacity: 500 mAh  
Input: 5 V = 2 A  
IP Rating: 5 ATM + IP68  
Reliability: MIL-STD-883C  
Software version: Go to watch "Settings" > "More Settings" > "About Watch" to view  
Sensor: acceleration sensor, gyroscope sensor, geomagnetic sensor, optical heart rate sensor, blood oxygen sensor, ambient light sensor, barometric pressure sensor  
Bluetooth: BT5.0  
WiFi: Wi-Fi 5G / 2.4G, 802.11 a/b/gn  
Satellite function: BeiDou, GPS, Galileo, GLONASS, QZSS

ODM输出, 用于预览  
尺寸: 6\*6mm



The N-Mark is a trademark or registered trademark of NFC Forum, Inc. in the United States and in other countries.  
This manual is published by OnePlus. OnePlus may correct any misprints, errors, and inaccuracies in the manual or improve its apps and devices at any time it deems necessary without any notice. Such changes will be applied in the later versions of this manual. All images in this manual are for reference only and may differ from the actual device and UI.

Some content may differ from your device depending on the region, service provider, or software version, and is subject to change without prior notice.

© 2023 OnePlus All Rights Reserved. All rights reserved.

Made in China  
XXXXXXXXXXXX V0.1

ODM物料代码 封面

**Safety instructions**  
Read all information before using the device to ensure safe and proper use:  
• This smart watch is suitable for working in an environment of 0°C to 35°C. Temperature for storage should be between -20°C and 45°C. Excessively high or low temperatures may damage the smart watch or reduce the battery's lifespan.  
• When charging, please keep the device in a well-ventilated area. Please charge this smart watch in an environment between 5°C and 35°C. If the smart watch has a flash charging function, it may not be able to enter the flash charging mode when the temperature is below 15°C or over 35°C.  
• The adapter, as the disconnect device from the mains, shall be installed near the device and easily accessible.  
• Use manufacturer-approved chargers, data cables, batteries and other accessories to prevent potential electric shock, fire, explosion or other hazards.  
• Back cover can't be removed.  
• Do not place the device or battery directly in sunlight, near/inside sources of heat or in a low air pressure location, which may lead to an explosion or battery leakage.  
• To prevent damage to your device's parts or internal circuits, do not use it in dusty, smoky, damp or dirty environments or near magnetic fields.  
• Power off your device in any area with a potentially explosive atmosphere, in blasting areas/near blasting caps and comply with all signs and instructions.  
• If any part of the product is cracked or damaged, discontinue use immediately and contact the OnePlus Service Center.  
• The battery can be charged and discharged hundreds of times at least, but it will eventually wear out.  
• Do not charge the battery over 12 hours.  
• Do not replace, disassemble, modify, mechanically crush or cut the battery, as it may cause battery leakage, overheating, explosion or fire.  
• Precautions for using the device:  
Observe all safety instructions for any places, especially in hospital/health care facilities, service stations, schools, professional garages and in an aircraft.

Some people may experience skin irritation if they are allergic to certain substances. If you notice any signs of skin redness or swelling, please discontinue use and consult a physician. Persons with electronic implants (pacemakers, insulin pumps, neurostimulators, etc.) are recommended to place the device 15 cm away from the implant or on the opposite side of the implant. Do not use your device and adhere to all safety warnings/regulations regarding mobile device usage while driving. Pregnant women should keep the mobile device away from their abdomen and teenagers should keep the mobile device away from their lower abdomen.  
• Your device supports water and dust resistance. Follow these tips carefully to maintain the water and dust resistance of your device. Failure to do so may result in damage to your device:  
Splash, water, and dust resistance are not permanent conditions and resistance might decrease as a result of normal wear. Do not charge your device in wet conditions. Do not use your device while diving into the water, playing watersports or moving in fast-flowing water. It is designed for regular use in normal swimming conditions, such as for swimming pools or beaches.  
Some features such as the touchscreen may not work properly if the device is used in water.  
• To prevent hearing damage by high sound pressure, do not listen at high volume levels for long periods.  
• Listening to a portable device at high volume may damage the user's ears and cause auditory disorders (temporary or permanent deafness, buzzing in the ears, tinnitus or hyperacusis). It is therefore strongly recommended not to use the portable device at full volume or more than one hour a day at medium volume.  
• Your device contains small parts with sharp edges that may cause an injury or which could become detached and create a choking hazard.  
• Do not leave your device and its accessories within the reach of small children or allow them to play with it. They could hurt themselves or others, or may damage the device accidentally.



• All personal information may be removed during or after the product software upgrade. Please back up your personal information before upgrading.  
• The operating system of this product supports official system updates. If the user rooted the ROM system of any third party or modified the system by cracking, it may lead to security risks of the system. OnePlus will not provide any support nor take any responsibility for the final use in these cases.  
• To better understand how we protect your personal information please see the privacy policy at [oneplus.com/privacy](http://oneplus.com/privacy).

FCC Regulatory Conformance

FCC Statement

This device complies with part 15 of the FCC rules. Operation is subject to the following two conditions:  
(1) This device may not cause harmful interference; and  
(2) This device must accept any interference received, including interference that may cause undesired operation.  
NOTE: This equipment has been tested and found to comply with the limits for a Class B digital device, pursuant to part 15 of the FCC Rules. These limits are designed to provide reasonable protection against harmful to part interference in a residential installation. This equipment generates uses and can radiate radio frequency energy and, if not installed and used in accordance with the instructions, may cause harmful interference to radio communications.  
However, there is no guarantee that interference will not occur in a particular installation. If this equipment does cause harmful interference to radio or television reception, which can be determined by turning the equipment off and on, the user is encouraged to try to correct the interference by one or more of the following measures:  
- Reorient or relocate the receiving antenna.

- Increase the separation between the equipment and receiver.  
- Connect the equipment into an outlet on a circuit different from that to which the receiver is connected.  
- Consult the dealer or an experienced radio/TV technician for help.

FCC Caution

- Any changes or modifications not expressly approved by the party responsible for compliance could void the user's authority to operate the equipment.
- The antenna(s) used for this transmitter must not be collocated or operate in conjunction with any other antenna or transmitter.
- The country code selection is for non-US model only and is not available for all US models. Per FCC regulation, all Wi-Fi products marketed in US must be fixed to US operation channels only.
- Operation of transmitters in the 5.925-7.125 GHz band is prohibited for control of or communications with unmanned aircraft systems.

RF Exposure Information (SAR)

This product complies with general public RF exposure guidelines. Front of face SAR limit is 1.6W/kg, and Limbs SAR limit is 4.0W/kg. And please see the "Quick Start Guide" to find the highest SAR value.  
In the human exposure compliance assessment, Front of face SAR test for the face approaching scene has been carried out at a distance of 1 cm from the front of the device, and limbs SAR test of the wrist-worn scene has been carried out under the condition of direct contact with the back of the device. To comply with RF exposure guidelines during the face approaching use, the device should be positioned at least 1 cm from the face.  
If you are using medical or similar devices such as cardiac pacemakers, hearing aids, cochlear implants, etc., please use this product according to the instructions of your doctor.

ISED Regulatory Conformance  
Conformité réglementaire ISED

**ISED Statement**  
This device contains licence-exempt transmitter(s)/receiver(s) that comply with Innovation, Science and Economic Development Canada's licence-exempt RSS(s).  
Operation is subject to the following two conditions:  
(1) This device may not cause interference.  
(2) This device must accept any interference, including interference that may cause undesired operation of the device.  
This device complies with the Canadian ICES-003 Class B specifications.

Déclaration d'ISED

Science conformes aux normes RSS(s) applicables aux appareils radio exempts de licence d'Innovation, Sciences et Développement Économique Canada.  
Som fonctionnement est soumis aux deux conditions suivantes:  
(1) L'appareil ne doit pas provoquer d'interférences.  
(2) L'appareil doit accepter toute interférence, y compris les interférences susceptibles d'en compromettre le fonctionnement.  
Cet appareil est conforme aux spécifications canadiennes ICES-003 concernant la classe B.  
CAN ICES-003(B)/NMB-003(B)  
This equipment complies with IC RSS -102 radiation exposure limits set forth for an uncontrolled environment.  
CAN ICES-003(B)/NMB-003(B)  
Cet appareil numérique de la classe B est conforme à la norme NMB-003 du Canada.  
Cet équipement est conforme aux limites d'exposition aux radiations RSS-102 établies pour un environnement non contrôlé.

Restrictions in 5GHz band

The device could automatically discontinue transmission in case of absence of information to transmit, or operational failure. Note that this is not intended to prohibit transmission of control or signaling information or the use of repetitive codes when required by the technology. The device for operation in the band 5150-5250MHz is only for indoor use to reduce the potential for harmful interference to co-channel mobile satellite systems.

Restrictions dans la bande des 5 GHz

Les dispositifs fonctionnant dans la bande 5150-5250MHz sont réservés uniquement pour une utilisation à l'intérieur afin de réduire les risques de brouillage préjudiciable aux systèmes de satellites mobiles utilisant les mêmes canaux.

RLAN devices

Devices shall not be used for control of or communications with unmanned aircraft systems.

Dispositifs RLAN

Les dispositifs ne doivent pas être utilisés pour commander des systèmes d'aéronef sans pilote ni pour communiquer avec de tels systèmes.

RF Exposure Information (SAR)

This product complies with general public RF exposure guidelines. Front of face SAR limit is 1.6W/kg, and Limbs SAR limit is 4.0W/kg. And please see the "Quick Start Guide" to find the highest SAR value.  
In the human exposure compliance assessment, Front of face SAR test for the face approaching scene has been carried out at a distance of 1 cm from the front of the device, and limbs SAR test of the wrist-worn scene has been carried out under the condition of direct contact with the back of the device. To comply with RF exposure guidelines during the face approaching use, the device should be positioned at least 1 cm from the face.  
If you are using medical or similar devices such as cardiac pacemakers, hearing aids, cochlear implants, etc., please use this product according to the instructions of your doctor.

Information concernant l'exposition aux fréquences radio (DAS)

Ce produit est conforme aux directives du grand public en matière d'exposition aux RF. La limite DAS pour le devant du visage est de 1,6 W/kg et la limite DAS pour les membres est de 4,0 W/kg. Et veuillez consulter le « Guide de démarrage rapide » pour trouver la valeur SAR la plus élevée. Dans l'évaluation de la conformité de l'exposition humaine, le test SAR sur le devant du visage pour la scène approchant le visage a été effectué à une distance de 1 cm de l'avant de l'appareil, et le test SAR sur les membres de la scène portée au poignet a été effectué sous la condition de contact direct avec l'arrière de l'appareil. Pour respecter les directives d'exposition aux RF hors de l'utilisation à proximité du visage, l'appareil doit être positionné à au moins 1 cm du visage. Si vous utilisez des appareils médicaux ou similaires tels que des stimulateurs cardiaques, des appareils auditifs, des implants cochléaires, etc., veuillez utiliser ce produit conformément aux instructions de votre médecin.

Regulatory

Steps to search Regulatory:  
Go to Settings > System > Regulatory information

Statement

OnePlus and OnePlus are trademarks or registered trademarks of OnePlus Technology (Shenzhen) Co., Ltd. The Bluetooth® word mark and logos are registered trademarks owned by Bluetooth SIG, Inc. and any use of such marks by OnePlus is under license. Other trademarks and trade names are the property of their respective owners. Copyright © 2023 OnePlus Technology (Shenzhen) Co., Ltd. All rights reserved. This manual is for informational purposes only and does not constitute a commitment of any kind. Company Information: OnePlus Technology (Shenzhen) Co., Ltd. Address: 18002, 18003, 18004, and 18005, Shum Yip Terra Building, Brite Avenue North, Futian District, Shenzhen, Guangdong, P.R. China.

Service and Support

Please contact OnePlus Customer Support to request a return at [oneplus.com/support](http://oneplus.com/support). For user manuals, please visit <http://service.oneplus.com/global/user-manual>.

OnePlus Device Warranty Information

OnePlus devices purchased on [oneplus.com](http://oneplus.com) or authorized sales channels come with a limited warranty. The duration of this warranty is dependent on the original country or region of purchase and is only redeemable within the original country or region. Unless otherwise specified, this warranty covers the hardware components of the product as originally supplied and does not cover, or partially covers, software, consumable items, or accessories, even if packaged or sold together with the product. The limited warranty only covers functional defects of product caused by workmanship or build materials. For more details, please contact OnePlus Customer Support by visiting [oneplus.com/support](http://oneplus.com/support).

The Limited Warranty Does Not Cover

- Defects or damage resulting from accidents, neglect, misuse, or abnormal use, abnormal conditions or improper storage; exposure to liquid, moisture, dampness, and/or dirt; unusual physical, electrical or electromechanical stress.
- Scratches, dents and cosmetic damage, unless caused by OnePlus.
- Defects or damage resulting from excessive force or use of metallic objects on the touch screen.
- Devices that have the serial number or the IMEI number removed, defaced, damaged, altered or made illegible.
- Ordinary wear and tear.
- Defects or damage resulting from the use of the product in conjunction or connection with accessories, products, or ancillary/peripheral equipment not furnished or approved by OnePlus.
- Any physical feature defects or damage resulting from improper testing, operation, maintenance, installation, service, or adjustment not furnished or approved by OnePlus.
- Defects or damage resulting from external causes such as collision with an object, fire, flooding, dirt, windstorm, lightning, earthquake, exposure to weather conditions, theft, blown fuse, or improper use of any electrical source.
- Defects or damage resulting from cellular signal reception or transmission, or viruses and 3rd party software problems introduced into the product.
- Free warranty replacements and repairs are only valid in the country or region of purchase. Please contact OnePlus Customer Support for more details. Note: The above warranty is only valid for the products placed on market in this country or region.

oppo	物料代码 (P/N)	ODM	
	物料名称 (Name)	用户手册	
设计 (Designer) / 日期 (Date)	钟涛/2023.01.18	项目 (Project)	Almond
电话 (Tel)	183 0256 3774	版本 (Version)	VX.XX
邮箱 (Email)	v-zhongping@oppo.com	状态 (Status)	量产
审核 (Check) / 日期 (Date)	XXXX/2023.XX.XX	页码 (Page)	第 1 页, 共 1 页
批准 (Approval) / 日期 (Date)	XXX/2023.XX.XX	受控文件	