

System Check_Head_2300MHz

DUT: D2300V2-SN:1056

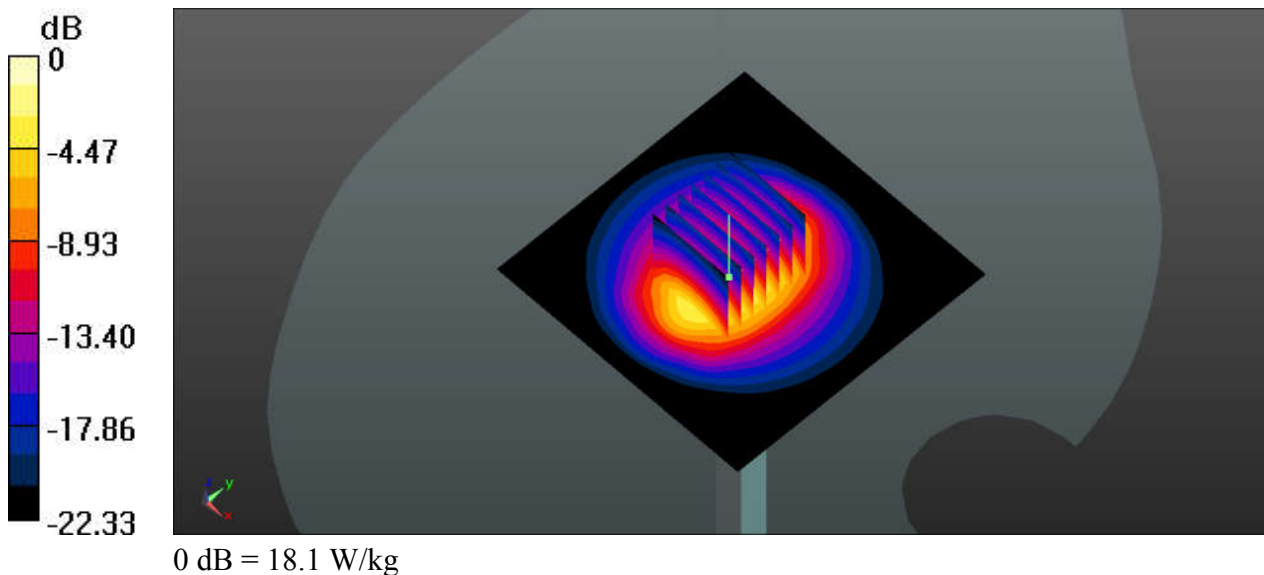
Communication System: UID 0, CW (0); Frequency: 2300 MHz; Duty Cycle: 1:1
Medium: HSL_2300_200803 Medium parameters used: $f = 2300$ MHz; $\sigma = 1.678$ S/m; $\epsilon_r = 38.25$; $\rho = 1000$ kg/m³
Ambient Temperature : 23.5 °C; Liquid Temperature : 22.4 °C

DASY5 Configuration:

- Probe: EX3DV4 - SN7576; ConvF(8.03, 8.03, 8.03); Calibrated: 2020.01.22;
- Sensor-Surface: 2mm (Mechanical Surface Detection)
- Electronics: DAE3 Sn528; Calibrated: 2020.03.16
- Phantom: SAM (Front) with CRP v5.0; Type: QD000P40CD; Serial: TP:1795
- Measurement SW: DASY52, Version 52.8 (8); SEMCAD X Version 14.6.10 (7331)

Pin=250mW/Area Scan (81x81x1): Interpolated grid: dx=1.200 mm, dy=1.200 mm
Maximum value of SAR (interpolated) = 18.2 W/kg

Pin=250mW/Zoom Scan (7x7x7)/Cube 0: Measurement grid: dx=5mm, dy=5mm, dz=5mm
Reference Value = 104.8 V/m; Power Drift = 0.05 dB
Peak SAR (extrapolated) = 24.3 W/kg
SAR(1 g) = 11.9 W/kg; SAR(10 g) = 5.56 W/kg
Maximum value of SAR (measured) = 18.1 W/kg



System Check_Head_2450MHz

DUT: D2450V2-SN:924

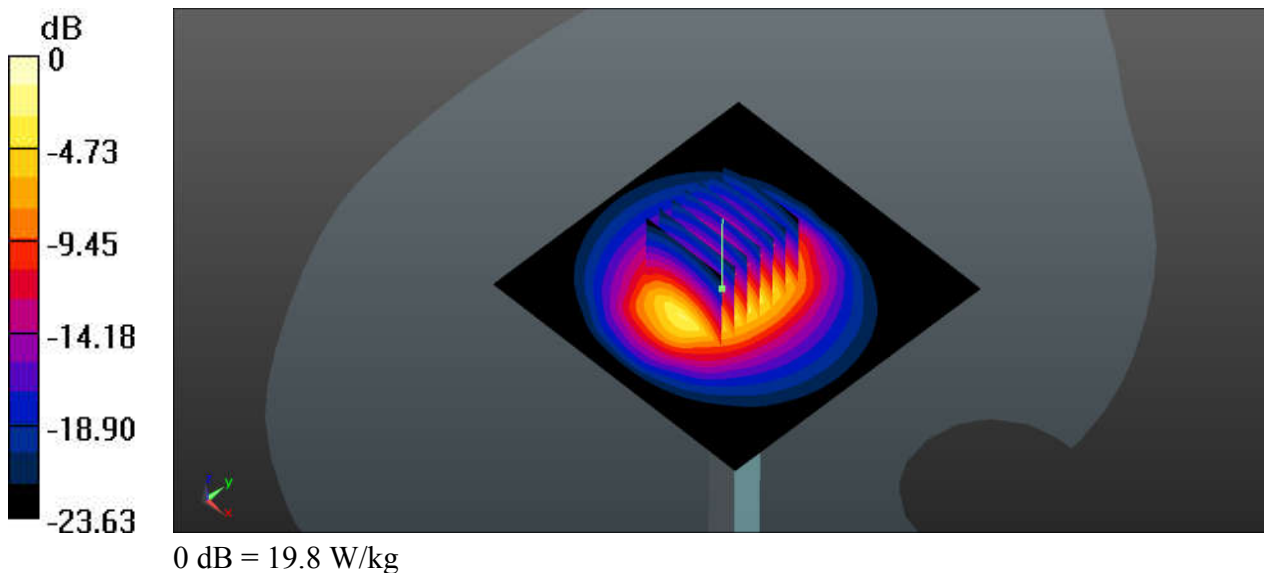
Communication System: UID 0, CW; Frequency: 2450 MHz; Duty Cycle: 1:1
Medium: HSL_2450_200713 Medium parameters used: $f = 2450$ MHz; $\sigma = 1.865$ S/m; $\epsilon_r = 37.492$;
 $\rho = 1000$ kg/m³
Ambient Temperature : 23.4 °C; Liquid Temperature : 22.5 °C

DASY5 Configuration:

- Probe: EX3DV4 - SN7576; ConvF(7.76, 7.76, 7.76); Calibrated: 2020.01.22;
- Sensor-Surface: 2mm (Mechanical Surface Detection)
- Electronics: DAE3 Sn528; Calibrated: 2020.03.16
- Phantom: SAM (Front) with CRP v5.0; Type: QD000P40CD; Serial: TP:1795
- Measurement SW: DASY52, Version 52.8 (8); SEMCAD X Version 14.6.10 (7331)

Pin=250mW/Area Scan (81x81x1): Interpolated grid: dx=1.200 mm, dy=1.200 mm
Maximum value of SAR (interpolated) = 19.9 W/kg

Pin=250mW/Zoom Scan (7x7x7)/Cube 0: Measurement grid: dx=5mm, dy=5mm, dz=5mm
Reference Value = 86.25 V/m; Power Drift = 0.08 dB
Peak SAR (extrapolated) = 27.1 W/kg
SAR(1 g) = 12.6 W/kg; SAR(10 g) = 5.67 W/kg
Maximum value of SAR (measured) = 19.8 W/kg



System Check_Head_2450MHz

DUT: D2450V2-SN:924

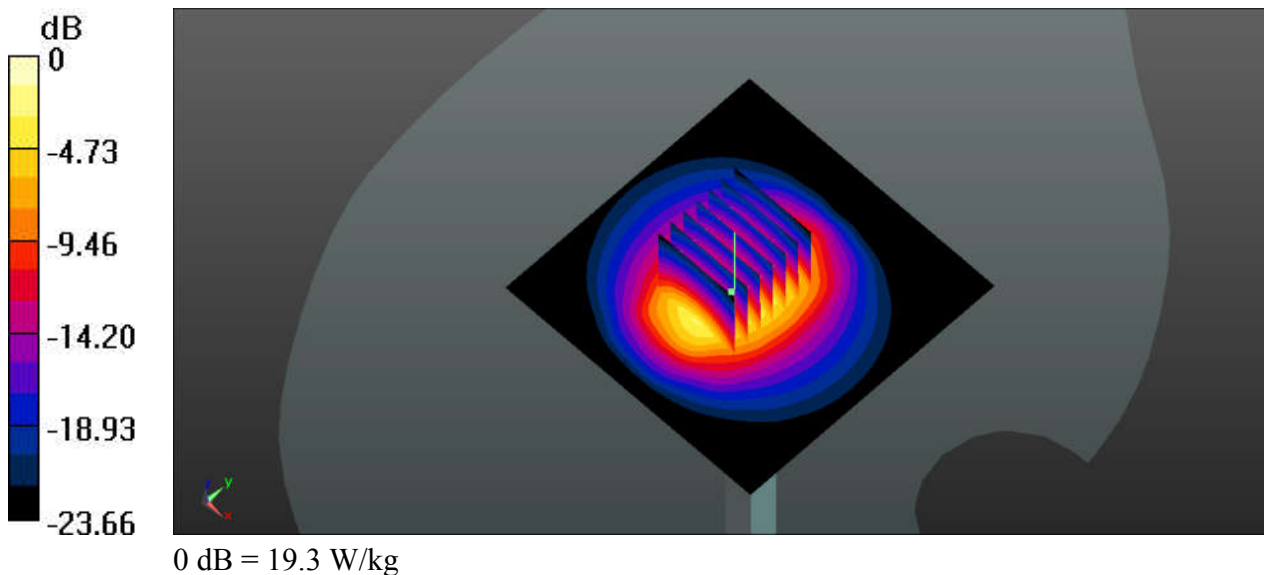
Communication System: UID 0, CW; Frequency: 2450 MHz; Duty Cycle: 1:1
Medium: HSL_2450_200729 Medium parameters used: $f = 2450$ MHz; $\sigma = 1.82$ S/m; $\epsilon_r = 39.753$; $\rho = 1000$ kg/m³
Ambient Temperature : 23.7 °C; Liquid Temperature : 22.4 °C

DASY5 Configuration:

- Probe: EX3DV4 - SN7576; ConvF(7.76, 7.76, 7.76); Calibrated: 2020.01.22;
- Sensor-Surface: 2mm (Mechanical Surface Detection)
- Electronics: DAE3 Sn528; Calibrated: 2020.03.16
- Phantom: SAM (Front) with CRP v5.0; Type: QD000P40CD; Serial: TP:1795
- Measurement SW: DASY52, Version 52.8 (8); SEMCAD X Version 14.6.10 (7331)

Pin=250mW/Area Scan (81x81x1): Interpolated grid: dx=1.200 mm, dy=1.200 mm
Maximum value of SAR (interpolated) = 19.4 W/kg

Pin=250mW/Zoom Scan (7x7x7)/Cube 0: Measurement grid: dx=5mm, dy=5mm, dz=5mm
Reference Value = 86.28 V/m; Power Drift = 0.08 dB
Peak SAR (extrapolated) = 26.5 W/kg
SAR(1 g) = 12.3 W/kg; SAR(10 g) = 5.54 W/kg
Maximum value of SAR (measured) = 19.3 W/kg



System Check_Head_2600MHz

DUT: D2600V2-SN:1070

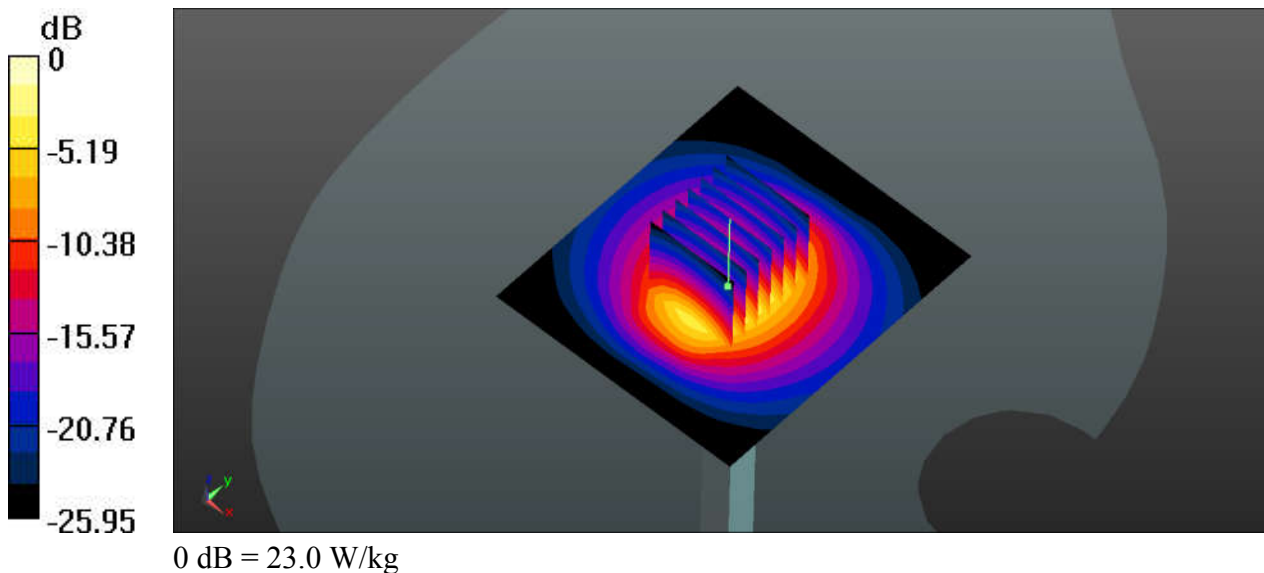
Communication System: UID 0, CW (0); Frequency: 2600 MHz; Duty Cycle: 1:1
Medium: HSL_2600_200710 Medium parameters used: $f = 2600$ MHz; $\sigma = 2.05$ S/m; $\epsilon_r = 38.344$; $\rho = 1000$ kg/m³
Ambient Temperature : 23.4 °C; Liquid Temperature : 22.6 °C

DASY5 Configuration:

- Probe: EX3DV4 - SN7576; ConvF(7.47, 7.47, 7.47); Calibrated: 2020.01.22;
- Sensor-Surface: 2mm (Mechanical Surface Detection)
- Electronics: DAE3 Sn528; Calibrated: 2020.03.16
- Phantom: SAM (Front) with CRP v5.0; Type: QD000P40CD; Serial: TP:1795
- Measurement SW: DASY52, Version 52.8 (8); SEMCAD X Version 14.6.10 (7331)

Pin=250mW/Area Scan (71x81x1): Interpolated grid: dx=1.200 mm, dy=1.200 mm
Maximum value of SAR (interpolated) = 23.9 W/kg

Pin=250mW/Zoom Scan (7x7x7)/Cube 0: Measurement grid: dx=5mm, dy=5mm, dz=5mm
Reference Value = 107.6 V/m; Power Drift = -0.18 dB
Peak SAR (extrapolated) = 32.5 W/kg
SAR(1 g) = 14.4 W/kg; SAR(10 g) = 6.21 W/kg
Maximum value of SAR (measured) = 23.0 W/kg



System Check_Head_2600MHz

DUT: D2600V2-SN:1070

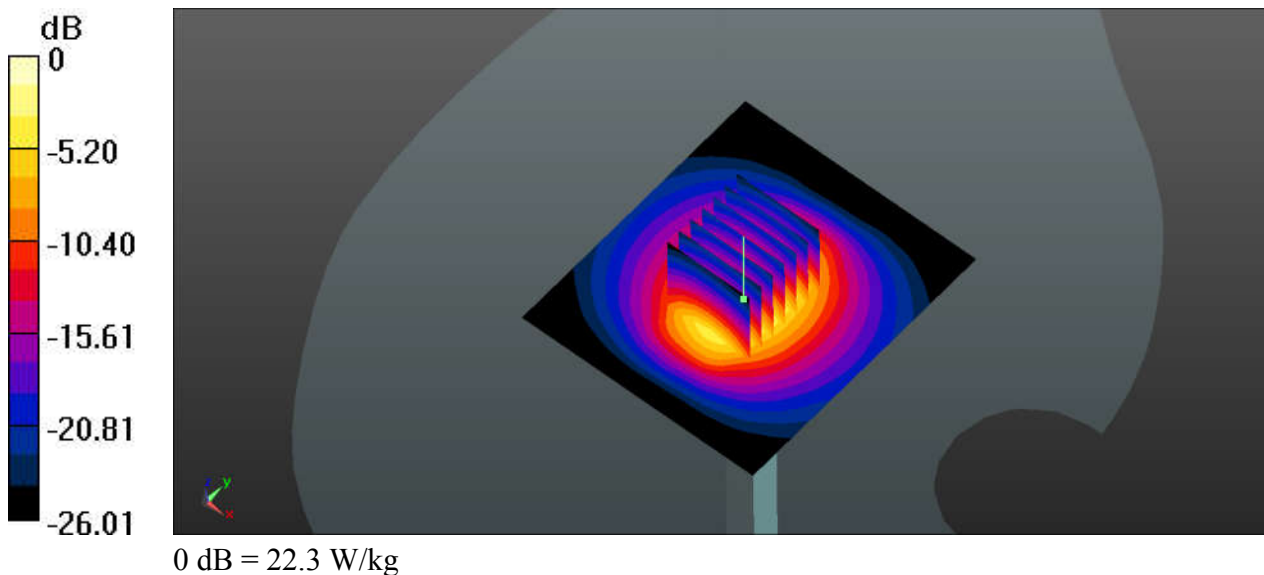
Communication System: UID 0, CW (0); Frequency: 2600 MHz; Duty Cycle: 1:1
Medium: HSL_2600_200731 Medium parameters used: $f = 2600$ MHz; $\sigma = 1.981$ S/m; $\epsilon_r = 38.254$;
 $\rho = 1000$ kg/m³
Ambient Temperature : 23.7 °C ; Liquid Temperature : 22.5 °C

DASY5 Configuration:

- Probe: EX3DV4 - SN7576; ConvF(7.47, 7.47, 7.47); Calibrated: 2020.01.22;
- Sensor-Surface: 2mm (Mechanical Surface Detection)
- Electronics: DAE3 Sn528; Calibrated: 2020.03.16
- Phantom: SAM (Front) with CRP v5.0; Type: QD000P40CD; Serial: TP:1795
- Measurement SW: DASY52, Version 52.8 (8); SEMCAD X Version 14.6.10 (7331)

Pin=250mW/Area Scan (71x81x1): Interpolated grid: dx=1.200 mm, dy=1.200 mm
Maximum value of SAR (interpolated) = 23.1 W/kg

Pin=250mW/Zoom Scan (7x7x7)/Cube 0: Measurement grid: dx=5mm, dy=5mm, dz=5mm
Reference Value = 107.7 V/m; Power Drift = -0.18 dB
Peak SAR (extrapolated) = 31.4 W/kg
SAR(1 g) = 13.9 W/kg; SAR(10 g) = 6.01 W/kg
Maximum value of SAR (measured) = 22.3 W/kg



System Check_Head_3500MHz

DUT: D3500V2-SN:1076

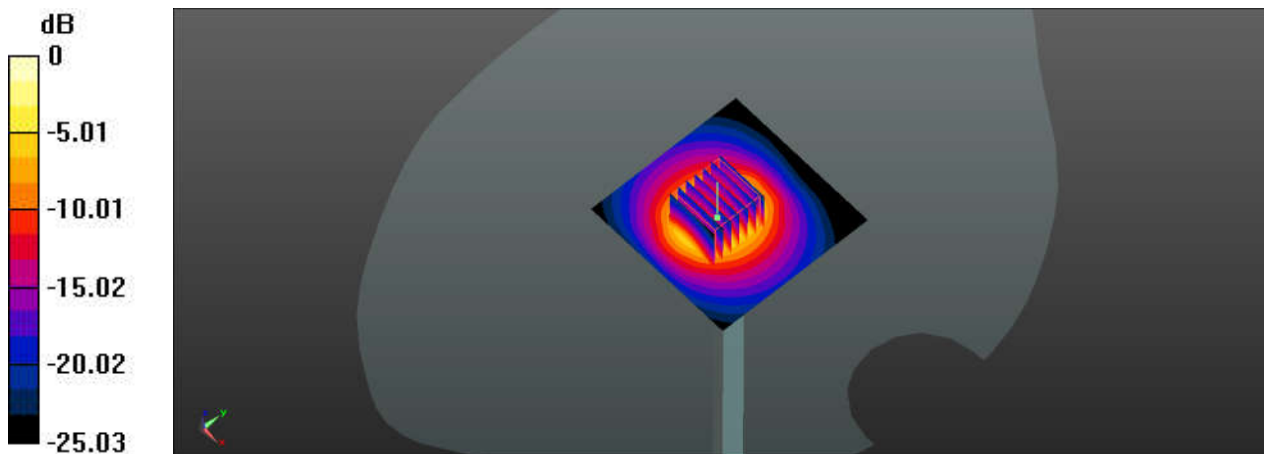
Communication System: UID 0, CW (0); Frequency: 3500 MHz; Duty Cycle: 1:1
Medium: HSL_3500_200801 Medium parameters used: $f = 3500$ MHz; $\sigma = 2.905$ S/m; $\epsilon_r = 39.577$;
 $\rho = 1000$ kg/m³
Ambient Temperature : 23.3 °C; Liquid Temperature : 22.5 °C

DASY5 Configuration:

- Probe: EX3DV4 - SN3819; ConvF(6.84, 6.84, 6.84); Calibrated: 2020/4/30
- Sensor-Surface: 1.4mm (Mechanical Surface Detection)
- Electronics: DAE4 Sn1226; Calibrated: 2020/5/15
- Phantom: SAM (30deg probe tilt) with CRP v4.0; Type: QD000P40CC; Serial: TP:1500
- Measurement SW: DASY52, Version 52.10 (3); SEMCAD X Version 14.6.13 (7474)

Pin=100mW/Area Scan (71x71x1): Interpolated grid: dx=1.000 mm, dy=1.000 mm
Maximum value of SAR (interpolated) = 13.2 W/kg

Pin=100mW/Zoom Scan (7x7x7)/Cube 0: Measurement grid: dx=4mm, dy=4mm, dz=1.4mm
Reference Value = 58.27 V/m; Power Drift = -0.15 dB
Peak SAR (extrapolated) = 18.5 W/kg
SAR(1 g) = 6.51 W/kg; SAR(10 g) = 2.39 W/kg
Maximum value of SAR (measured) = 12.9 W/kg



0 dB = 12.9 W/kg

System Check_Head_3700MHz

DUT: D3700V2-SN:1037

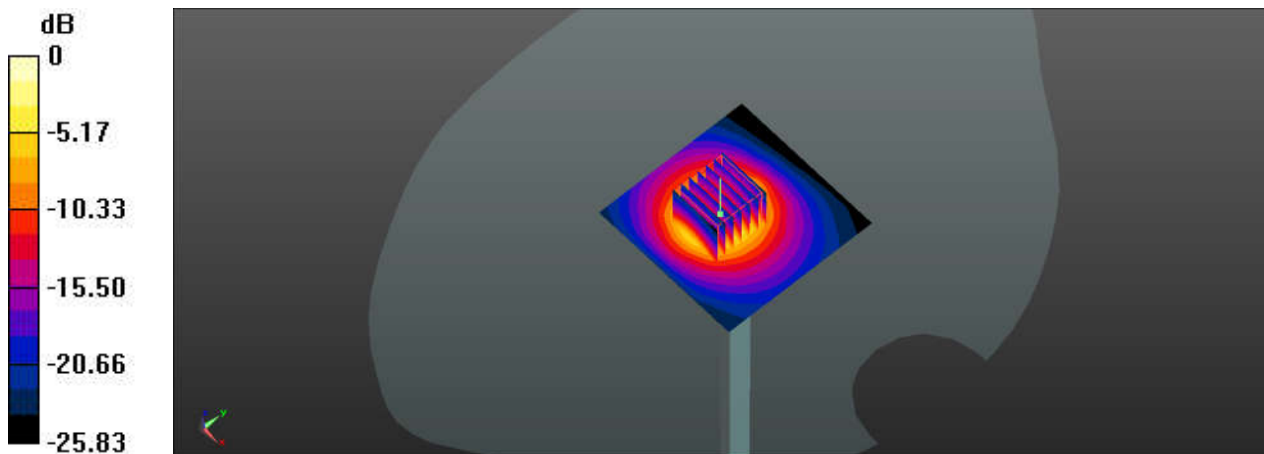
Communication System: UID 0, CW (0); Frequency: 3700 MHz; Duty Cycle: 1:1
Medium: HSL_3700_200801 Medium parameters used: $f = 3700$ MHz; $\sigma = 3.063$ S/m; $\epsilon_r = 39.332$;
 $\rho = 1000$ kg/m³
Ambient Temperature : 23.1 °C; Liquid Temperature : 22.3 °C

DASY5 Configuration:

- Probe: EX3DV4 - SN3819; ConvF(6.75, 6.75, 6.75); Calibrated: 2020/4/30
- Sensor-Surface: 1.4mm (Mechanical Surface Detection)
- Electronics: DAE4 Sn1226; Calibrated: 2020/5/15
- Phantom: SAM (30deg probe tilt) with CRP v4.0; Type: QD000P40CC; Serial: TP:1500
- Measurement SW: DASY52, Version 52.10 (3); SEMCAD X Version 14.6.13 (7474)

Pin=100mW/Area Scan (71x71x1): Interpolated grid: dx=1.000 mm, dy=1.000 mm
Maximum value of SAR (interpolated) = 13.3 W/kg

Pin=100mW/Zoom Scan (7x7x7)/Cube 0: Measurement grid: dx=4mm, dy=4mm, dz=1.4mm
Reference Value = 49.58 V/m; Power Drift = 0.08 dB
Peak SAR (extrapolated) = 18.9 W/kg
SAR(1 g) = 6.41 W/kg; SAR(10 g) = 2.3 W/kg
Maximum value of SAR (measured) = 12.8 W/kg



0 dB = 12.8 W/kg

System Check_Head_5250MHz

DUT: D5GHzV2-SN:1167

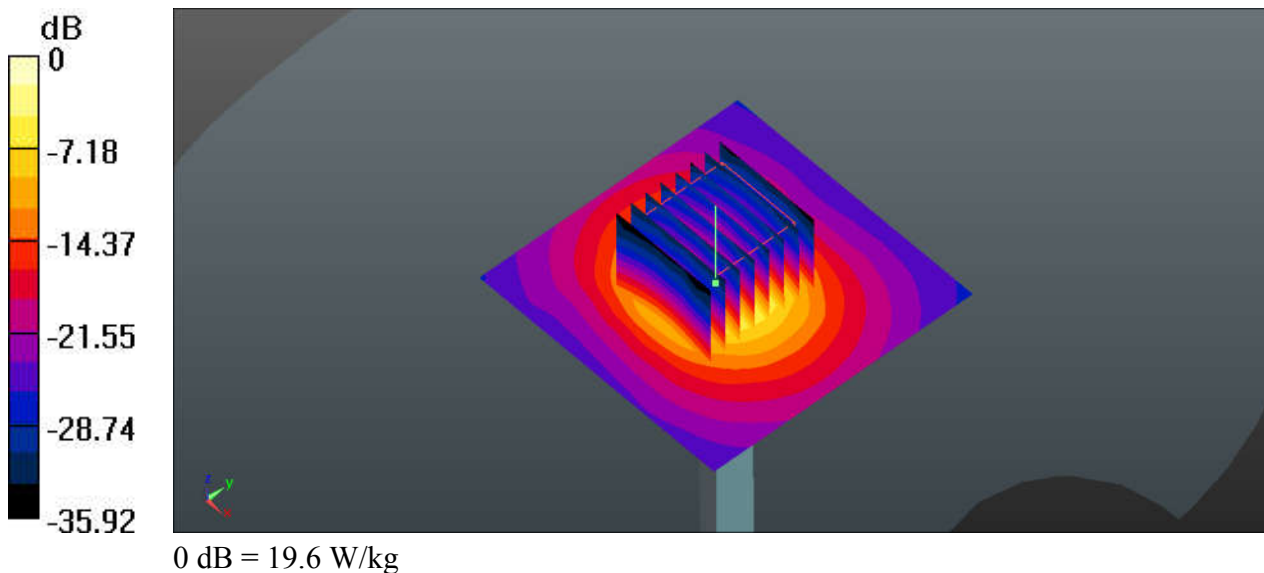
Communication System: UID 0, CW (0); Frequency: 5250 MHz; Duty Cycle: 1:1
Medium: HSL_5250_200715 Medium parameters used: $f = 5250$ MHz; $\sigma = 4.597$ S/m; $\epsilon_r = 36.241$;
 $\rho = 1000$ kg/m³
Ambient Temperature : 23.5 °C; Liquid Temperature : 22.6 °C

DASY5 Configuration:

- Probe: EX3DV4 - SN7576; ConvF(5.2, 5.2, 5.2); Calibrated: 2020.01.22;
- Sensor-Surface: 1.4mm (Mechanical Surface Detection)
- Electronics: DAE3 Sn528; Calibrated: 2020.03.16
- Phantom: SAM (Front) with CRP v5.0; Type: QD000P40CD; Serial: TP:1795
- Measurement SW: DASY52, Version 52.8 (8); SEMCAD X Version 14.6.10 (7331)

Pin=100mW/Area Scan (71x71x1): Interpolated grid: dx=1.000 mm, dy=1.000 mm
Maximum value of SAR (interpolated) = 19.9 W/kg

Pin=100mW/Zoom Scan (8x8x7)/Cube 0: Measurement grid: dx=4mm, dy=4mm, dz=1.4mm
Reference Value = 58.96 V/m; Power Drift = -0.08 dB
Peak SAR (extrapolated) = 33.0 W/kg
SAR(1 g) = 8.04 W/kg; SAR(10 g) = 2.27 W/kg
Maximum value of SAR (measured) = 19.6 W/kg



System Check_Head_5250MHz

DUT: D5GHzV2-SN:1167

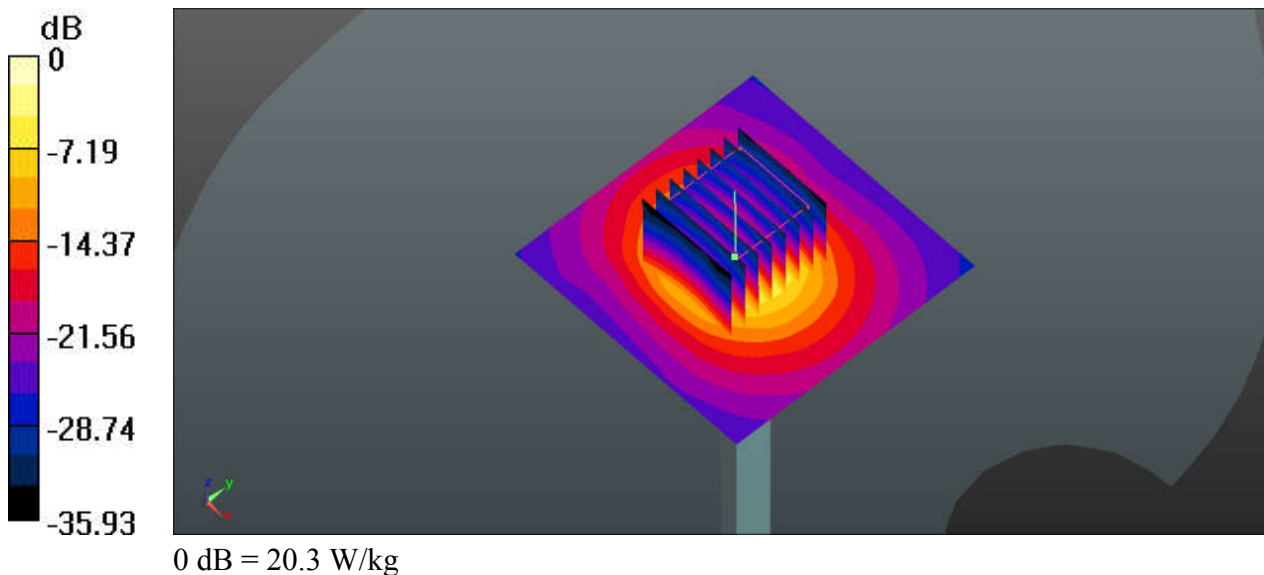
Communication System: UID 0, CW (0); Frequency: 5250 MHz; Duty Cycle: 1:1
Medium: HSL_5250_200721 Medium parameters used: $f = 5250$ MHz; $\sigma = 4.767$ S/m; $\epsilon_r = 36.98$; $\rho = 1000$ kg/m³
Ambient Temperature : 23.7 °C; Liquid Temperature : 22.6 °C

DASY5 Configuration:

- Probe: EX3DV4 - SN7576; ConvF(5.2, 5.2, 5.2); Calibrated: 2020.01.22;
- Sensor-Surface: 1.4mm (Mechanical Surface Detection)
- Electronics: DAE3 Sn528; Calibrated: 2020.03.16
- Phantom: SAM (Front) with CRP v5.0; Type: QD000P40CD; Serial: TP:1795
- Measurement SW: DASY52, Version 52.8 (8); SEMCAD X Version 14.6.10 (7331)

Pin=100mW/Area Scan (71x71x1): Interpolated grid: dx=1.000 mm, dy=1.000 mm
Maximum value of SAR (interpolated) = 20.7 W/kg

Pin=100mW/Zoom Scan (8x8x7)/Cube 0: Measurement grid: dx=4mm, dy=4mm, dz=1.4mm
Reference Value = 58.99 V/m; Power Drift = -0.08 dB
Peak SAR (extrapolated) = 34.2 W/kg
SAR(1 g) = 8.32 W/kg; SAR(10 g) = 2.35 W/kg
Maximum value of SAR (measured) = 20.3 W/kg



System Check_Head_5600MHz

DUT: D5GHzV2-SN:1167

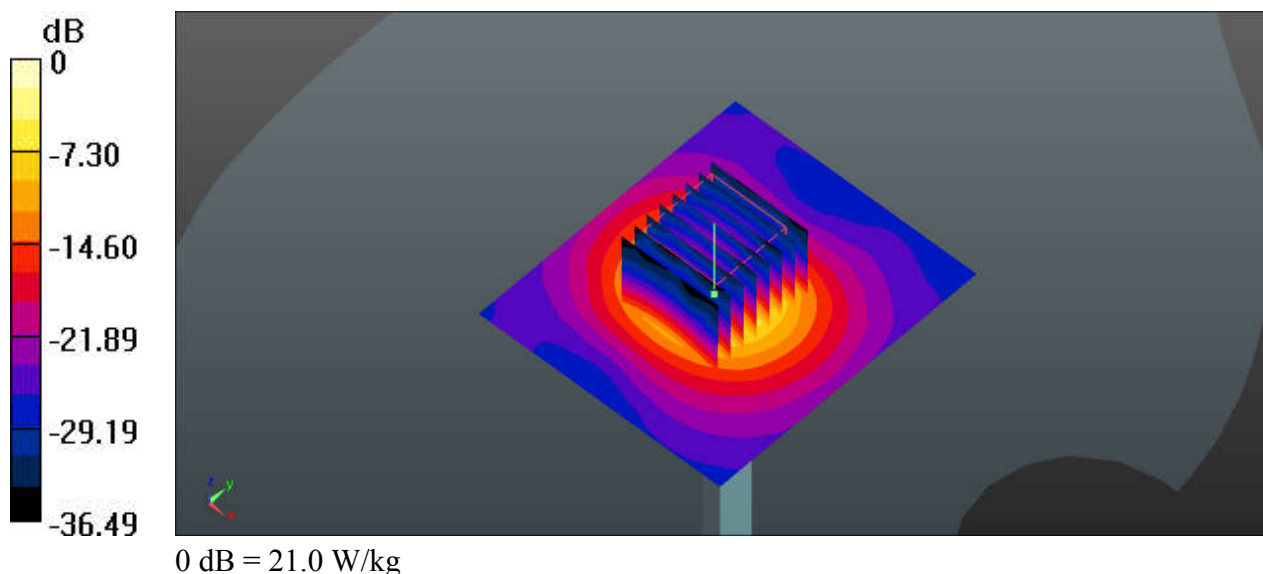
Communication System: UID 0, CW (0); Frequency: 5600 MHz; Duty Cycle: 1:1
 Medium: HSL_5600_200717 Medium parameters used: $f = 5600$ MHz; $\sigma = 4.945$ S/m; $\epsilon_r = 35.84$; $\rho = 1000$ kg/m³
 Ambient Temperature : 23.6 °C; Liquid Temperature : 22.6 °C

DASY5 Configuration:

- Probe: EX3DV4 - SN7576; ConvF(4.62, 4.62, 4.62); Calibrated: 2020.01.22;
- Sensor-Surface: 1.4mm (Mechanical Surface Detection)
- Electronics: DAE3 Sn528; Calibrated: 2020.03.16
- Phantom: SAM (Front) with CRP v5.0; Type: QD000P40CD; Serial: TP:1795
- Measurement SW: DASY52, Version 52.8 (8); SEMCAD X Version 14.6.10 (7331)

Pin=100mW/Area Scan (71x81x1): Interpolated grid: dx=1.000 mm, dy=1.000 mm
 Maximum value of SAR (interpolated) = 21.3 W/kg

Pin=100mW/Zoom Scan (8x8x7)/Cube 0: Measurement grid: dx=4mm, dy=4mm, dz=1.4mm
 Reference Value = 54.37 V/m; Power Drift = 0.11 dB
 Peak SAR (extrapolated) = 35.3 W/kg
SAR(1 g) = 8.05 W/kg; SAR(10 g) = 2.28 W/kg
 Maximum value of SAR (measured) = 21.0 W/kg



System Check_Head_5600MHz

DUT: D5GHzV2-SN:1167

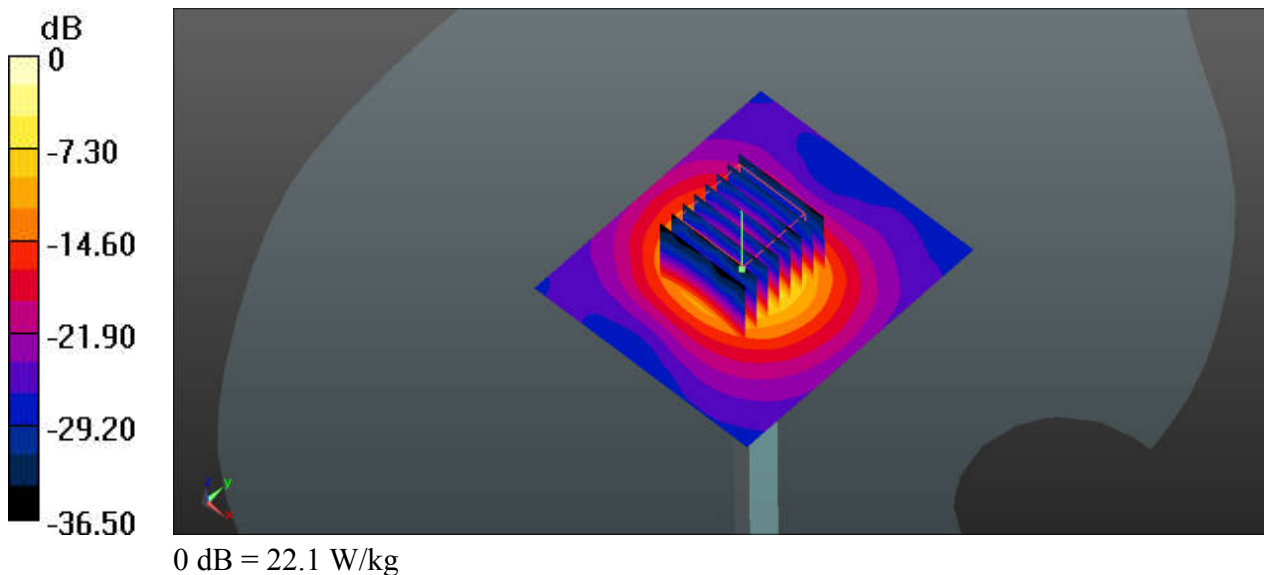
Communication System: UID 0, CW (0); Frequency: 5600 MHz; Duty Cycle: 1:1
Medium: HSL_5600_200724 Medium parameters used: $f = 5600$ MHz; $\sigma = 5.211$ S/m; $\epsilon_r = 36.228$;
 $\rho = 1000$ kg/m³
Ambient Temperature : 23.7 °C ; Liquid Temperature : 22.7 °C

DASY5 Configuration:

- Probe: EX3DV4 - SN7576; ConvF(4.62, 4.62, 4.62); Calibrated: 2020.01.22;
- Sensor-Surface: 1.4mm (Mechanical Surface Detection)
- Electronics: DAE3 Sn528; Calibrated: 2020.03.16
- Phantom: SAM (Front) with CRP v5.0; Type: QD000P40CD; Serial: TP:1795
- Measurement SW: DASY52, Version 52.8 (8); SEMCAD X Version 14.6.10 (7331)

Pin=100mW/Area Scan (71x81x1): Interpolated grid: dx=1.000 mm, dy=1.000 mm
Maximum value of SAR (interpolated) = 22.4 W/kg

Pin=100mW/Zoom Scan (8x8x7)/Cube 0: Measurement grid: dx=4mm, dy=4mm, dz=1.4mm
Reference Value = 54.39 V/m; Power Drift = 0.01 dB
Peak SAR (extrapolated) = 37.2 W/kg
SAR(1 g) = 8.48 W/kg; SAR(10 g) = 2.4 W/kg
Maximum value of SAR (measured) = 22.1 W/kg



System Check_Head_5750MHz

DUT: D5GHzV2-SN:1167

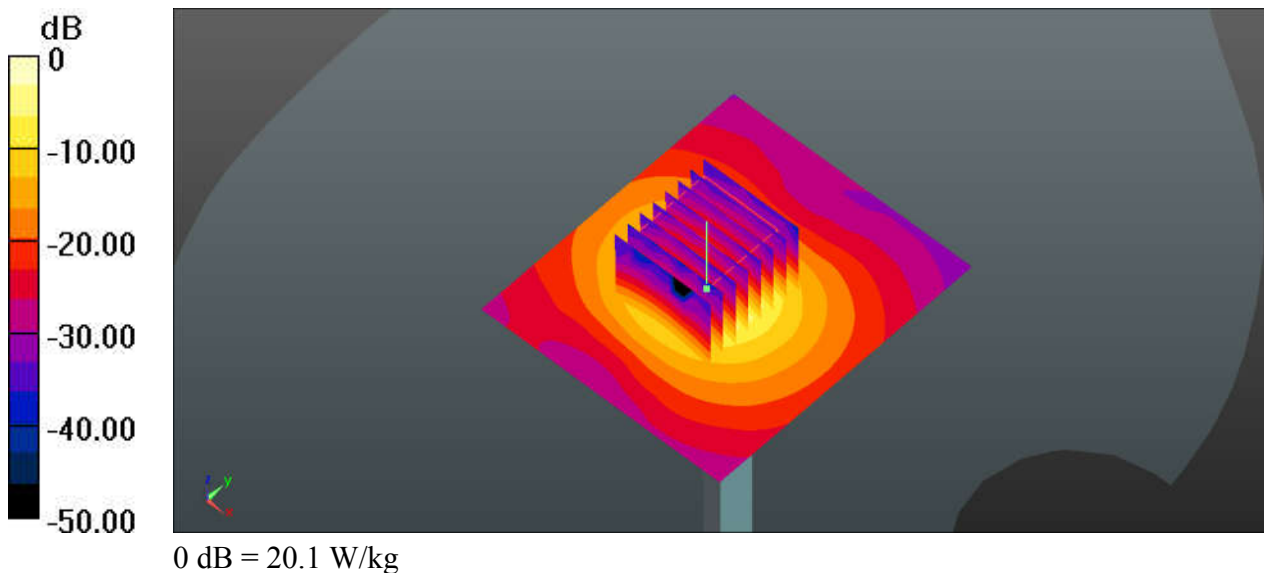
Communication System: UID 0, CW (0); Frequency: 5750 MHz; Duty Cycle: 1:1
Medium: HSL_5750_200719 Medium parameters used: $f = 5750$ MHz; $\sigma = 5.014$ S/m; $\epsilon_r = 36.603$;
 $\rho = 1000$ kg/m³
Ambient Temperature : 23.6 °C ; Liquid Temperature : 22.7 °C

DASY5 Configuration:

- Probe: EX3DV4 - SN7576; ConvF(4.83, 4.83, 4.83); Calibrated: 2020.01.22;
- Sensor-Surface: 1.4mm (Mechanical Surface Detection)
- Electronics: DAE3 Sn528; Calibrated: 2020.03.16
- Phantom: SAM (Front) with CRP v5.0; Type: QD000P40CD; Serial: TP:1795
- Measurement SW: DASY52, Version 52.8 (8); SEMCAD X Version 14.6.10 (7331)

Pin=100mW/Area Scan (71x81x1): Interpolated grid: dx=1.000 mm, dy=1.000 mm
Maximum value of SAR (interpolated) = 21.2 W/kg

Pin=100mW/Zoom Scan (8x8x7)/Cube 0: Measurement grid: dx=4mm, dy=4mm, dz=1.4mm
Reference Value = 50.58 V/m; Power Drift = 0.05 dB
Peak SAR (extrapolated) = 34.9 W/kg
SAR(1 g) = 7.8 W/kg; SAR(10 g) = 2.21 W/kg
Maximum value of SAR (measured) = 20.1 W/kg



System Check_Head_5750MHz

DUT: D5GHzV2-SN:1167

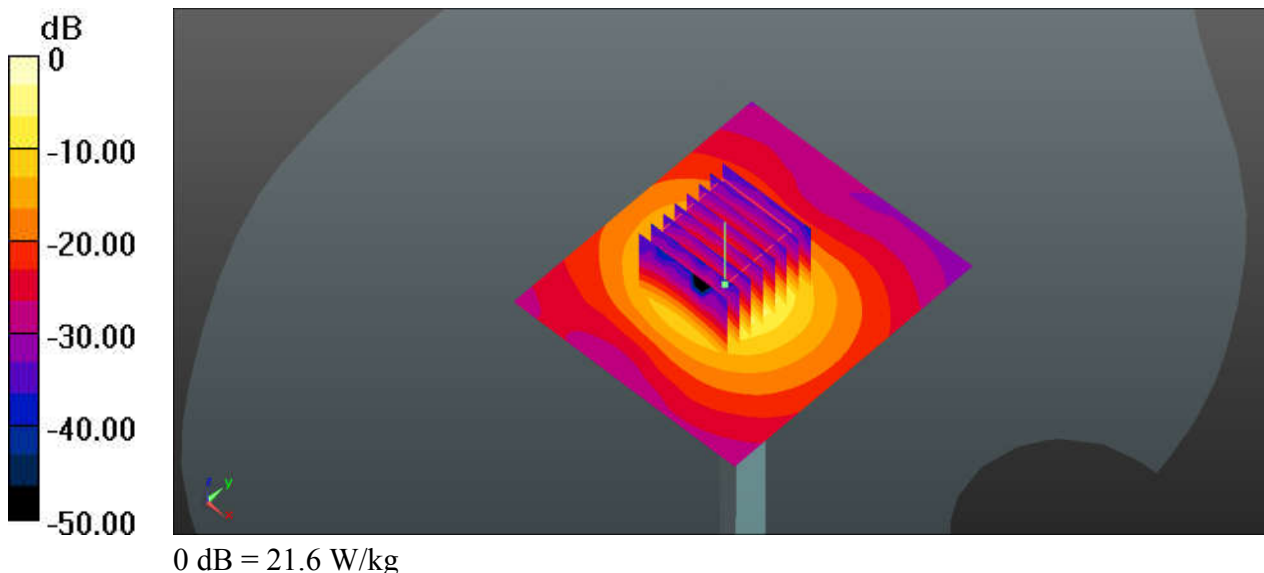
Communication System: UID 0, CW (0); Frequency: 5750 MHz; Duty Cycle: 1:1
Medium: HSL_5750_200727 Medium parameters used: $f = 5750$ MHz; $\sigma = 5.385$ S/m; $\epsilon_r = 35.954$;
 $\rho = 1000$ kg/m³
Ambient Temperature : 23.5 °C ; Liquid Temperature : 22.5 °C

DASY5 Configuration:

- Probe: EX3DV4 - SN7576; ConvF(4.83, 4.83, 4.83); Calibrated: 2020.01.22;
- Sensor-Surface: 1.4mm (Mechanical Surface Detection)
- Electronics: DAE3 Sn528; Calibrated: 2020.03.16
- Phantom: SAM (Front) with CRP v5.0; Type: QD000P40CD; Serial: TP:1795
- Measurement SW: DASY52, Version 52.8 (8); SEMCAD X Version 14.6.10 (7331)

Pin=100mW/Area Scan (71x81x1): Interpolated grid: dx=1.000 mm, dy=1.000 mm
Maximum value of SAR (interpolated) = 22.8 W/kg

Pin=100mW/Zoom Scan (8x8x7)/Cube 0: Measurement grid: dx=4mm, dy=4mm, dz=1.4mm
Reference Value = 50.60 V/m; Power Drift = 0.05 dB
Peak SAR (extrapolated) = 37.4 W/kg
SAR(1 g) = 8.37 W/kg; SAR(10 g) = 2.37 W/kg
Maximum value of SAR (measured) = 21.6 W/kg





Appendix B. Plots of SAR Measurement

The plots are shown as follows.

01_GSM850_GPRS(3 Tx slots)_Left Cheek_Ch128

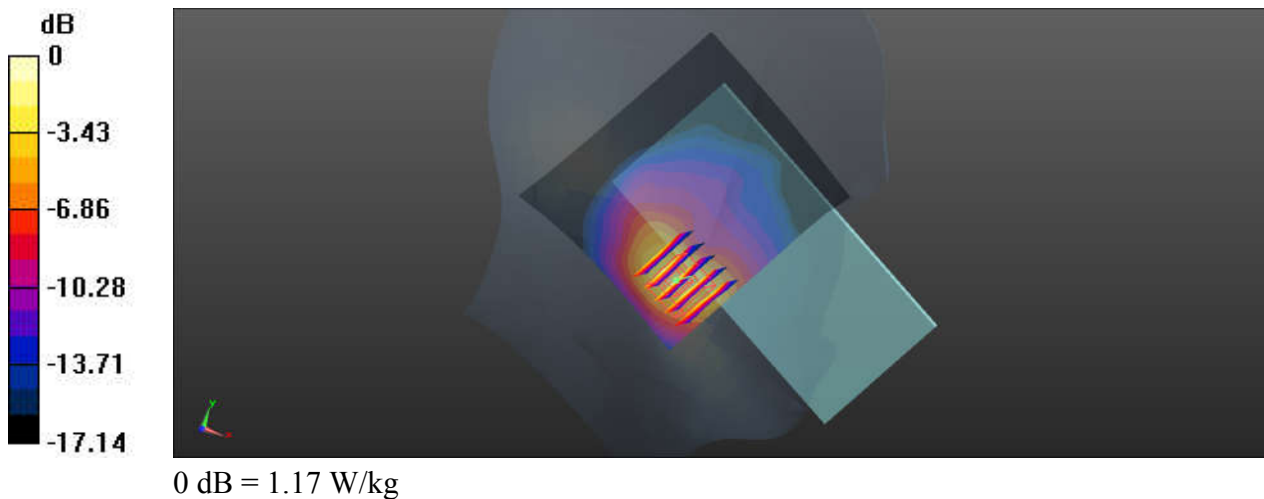
Communication System: UID 0, GPRS/EDGE11 (0); Frequency: 824.2 MHz; Duty Cycle: 1:2.77
Medium: HSL_835_200730 Medium parameters used: $f = 824.2$ MHz; $\sigma = 0.916$ S/m; $\epsilon_r = 42.816$;
 $\rho = 1000$ kg/m³
Ambient Temperature : 23.6 °C; Liquid Temperature : 22.6 °C

DASY5 Configuration:

- Probe: EX3DV4 - SN3819; ConvF(9.39, 9.39, 9.39); Calibrated: 2020/4/30
- Sensor-Surface: 2mm (Mechanical Surface Detection)
- Electronics: DAE4 Sn1226; Calibrated: 2020/5/15
- Phantom: SAM (30deg probe tilt) with CRP v4.0; Type: QD000P40CC; Serial: TP:1500
- Measurement SW: DASY52, Version 52.10 (3); SEMCAD X Version 14.6.13 (7474)

Ch128/Area Scan (81x71x1): Interpolated grid: dx=1.500 mm, dy=1.500 mm
Maximum value of SAR (interpolated) = 0.783 W/kg

Ch128/Zoom Scan (5x5x7)/Cube 0: Measurement grid: dx=8mm, dy=8mm, dz=5mm
Reference Value = 7.891 V/m; Power Drift = -0.03 dB
Peak SAR (extrapolated) = 1.57 W/kg
SAR(1 g) = 0.762 W/kg; SAR(10 g) = 0.396 W/kg
Maximum value of SAR (measured) = 1.17 W/kg



02_GSM1900_GPRS(3 Tx slots)_Right Tilted_Ch810

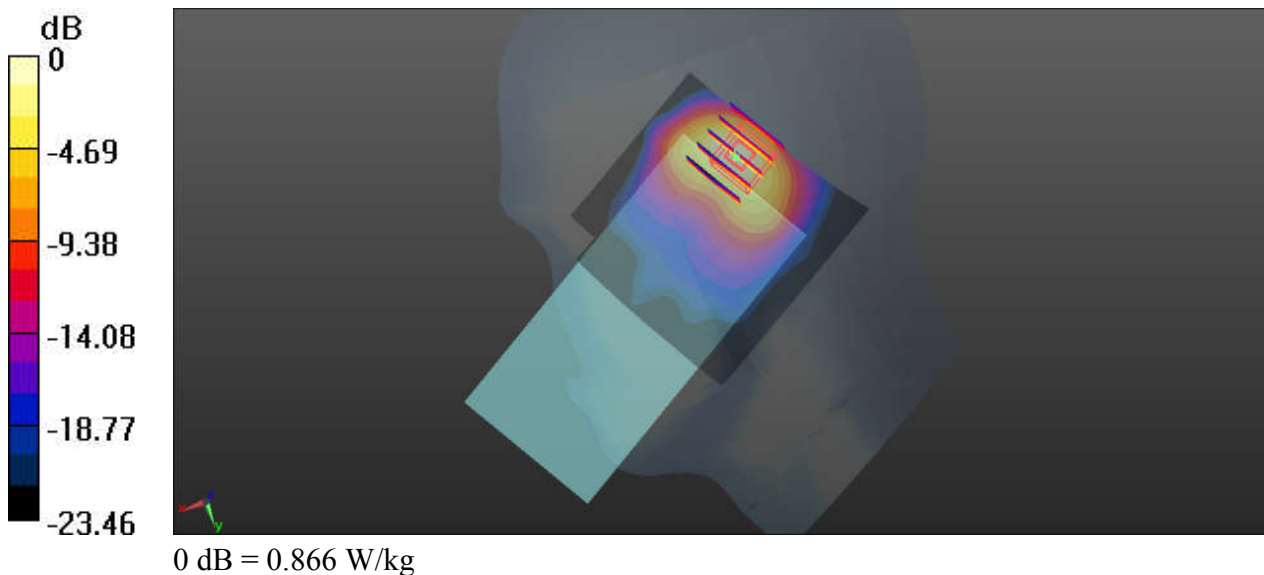
Communication System: UID 0, GPRS/EDGE11 (0); Frequency: 1909.8 MHz; Duty Cycle: 1:2.77
Medium: HSL_1900_200805 Medium parameters used: $f = 1910$ MHz; $\sigma = 1.427$ S/m; $\epsilon_r = 41.106$;
 $\rho = 1000$ kg/m³
Ambient Temperature : 23.5 °C; Liquid Temperature : 22.7 °C

DASY5 Configuration:

- Probe: EX3DV4 - SN7576; ConvF(8.58, 8.58, 8.58); Calibrated: 2020.01.22;
- Sensor-Surface: 2mm (Mechanical Surface Detection)
- Electronics: DAE3 Sn528; Calibrated: 2020.03.16
- Phantom: SAM (Front) with CRP v5.0; Type: QD000P40CD; Serial: TP:1795
- Measurement SW: DASY52, Version 52.8 (8); SEMCAD X Version 14.6.10 (7331)

Ch810/Area Scan (71x71x1): Interpolated grid: dx=1.500 mm, dy=1.500 mm
Maximum value of SAR (interpolated) = 0.876 W/kg

Ch810/Zoom Scan (5x5x7)/Cube 0: Measurement grid: dx=8mm, dy=8mm, dz=5mm
Reference Value = 2.230 V/m; Power Drift = 0.07 dB
Peak SAR (extrapolated) = 1.16 W/kg
SAR(1 g) = 0.536 W/kg; SAR(10 g) = 0.241 W/kg
Maximum value of SAR (measured) = 0.866 W/kg



03_WCDMA V_RMC 12.2Kbps_Left Cheek_Ch4132

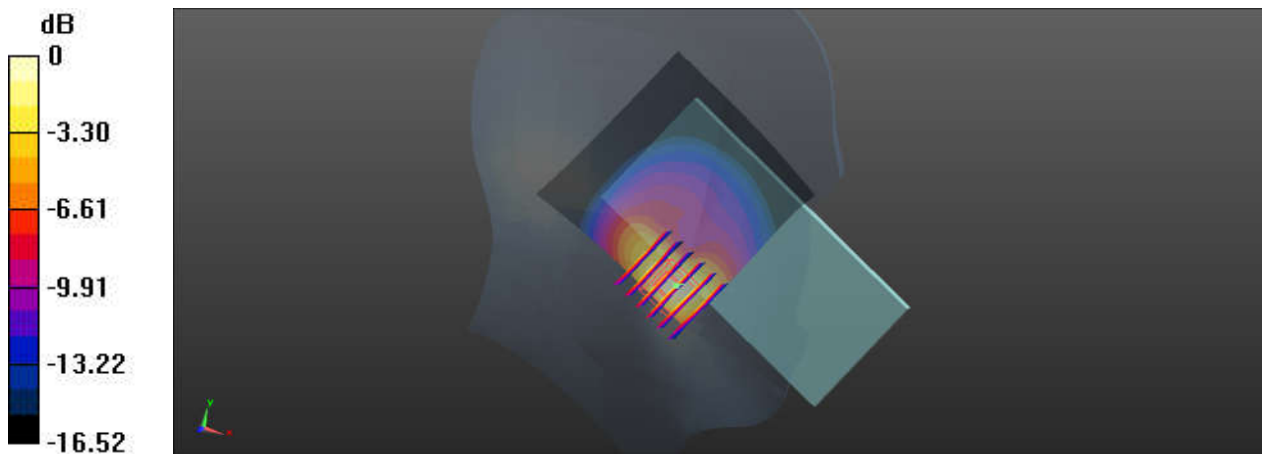
Communication System: UID 0, Generic WCDMA (0); Frequency: 826.4 MHz; Duty Cycle: 1:1
Medium: HSL_835_200730 Medium parameters used: $f = 826.4$ MHz; $\sigma = 0.918$ S/m; $\epsilon_r = 42.787$;
 $\rho = 1000$ kg/m³
Ambient Temperature : 23.6 °C; Liquid Temperature : 22.6 °C

DASY5 Configuration:

- Probe: EX3DV4 - SN3819; ConvF(9.39, 9.39, 9.39); Calibrated: 2020/4/30
- Sensor-Surface: 2mm (Mechanical Surface Detection)
- Electronics: DAE4 Sn1226; Calibrated: 2020/5/15
- Phantom: SAM (30deg probe tilt) with CRP v4.0; Type: QD000P40CC; Serial: TP:1500
- Measurement SW: DASY52, Version 52.10 (3); SEMCAD X Version 14.6.13 (7474)

Ch4132/Area Scan (71x71x1): Interpolated grid: dx=1.500 mm, dy=1.500 mm
Maximum value of SAR (interpolated) = 1.09 W/kg

Ch4132/Zoom Scan (6x6x7)/Cube 0: Measurement grid: dx=8mm, dy=8mm, dz=5mm
Reference Value = 7.817 V/m; Power Drift = 0.08 dB
Peak SAR (extrapolated) = 1.72 W/kg
SAR(1 g) = 0.812 W/kg; SAR(10 g) = 0.408 W/kg
Maximum value of SAR (measured) = 1.20 W/kg



0 dB = 1.20 W/kg

04_WCDMA IV_RMC 12.2Kbps_Right Tilted_Ch1513

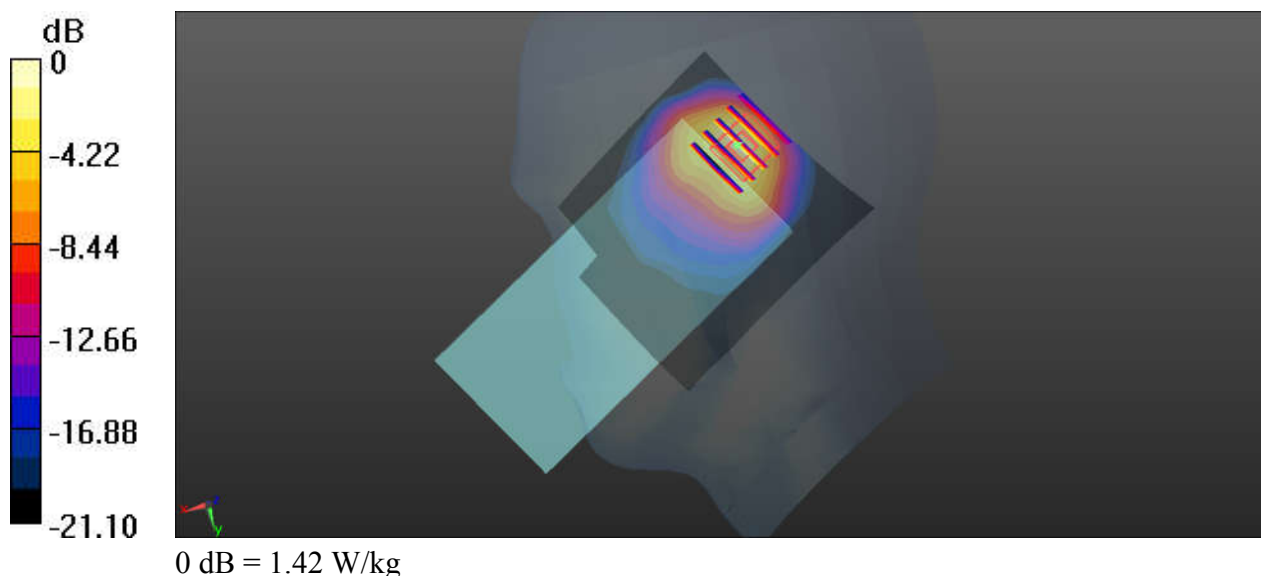
Communication System: UID 0, UMTS (0); Frequency: 1752.6 MHz; Duty Cycle: 1:1
Medium: HSL_1750_200807 Medium parameters used: $f = 1753$ MHz; $\sigma = 1.406$ S/m; $\epsilon_r = 41.368$;
 $\rho = 1000$ kg/m³
Ambient Temperature : 23.4 °C; Liquid Temperature : 22.7 °C

DASY5 Configuration:

- Probe: EX3DV4 - SN7576; ConvF(8.88, 8.88, 8.88); Calibrated: 2020.01.22;
- Sensor-Surface: 2mm (Mechanical Surface Detection)
- Electronics: DAE3 Sn528; Calibrated: 2020.03.16
- Phantom: SAM (Front) with CRP v5.0; Type: QD000P40CD; Serial: TP:1795
- Measurement SW: DASY52, Version 52.8 (8); SEMCAD X Version 14.6.10 (7331)

Ch1513/Area Scan (71x81x1): Interpolated grid: dx=1.500 mm, dy=1.500 mm
Maximum value of SAR (interpolated) = 1.12 W/kg

Ch1513/Zoom Scan (5x5x7)/Cube 0: Measurement grid: dx=8mm, dy=8mm, dz=5mm
Reference Value = 21.26 V/m; Power Drift = -0.17 dB
Peak SAR (extrapolated) = 1.81 W/kg
SAR(1 g) = 0.888 W/kg; SAR(10 g) = 0.416 W/kg
Maximum value of SAR (measured) = 1.42 W/kg



05_WCDMA II_RMC 12.2Kbps_Right Tilted_Ch9538

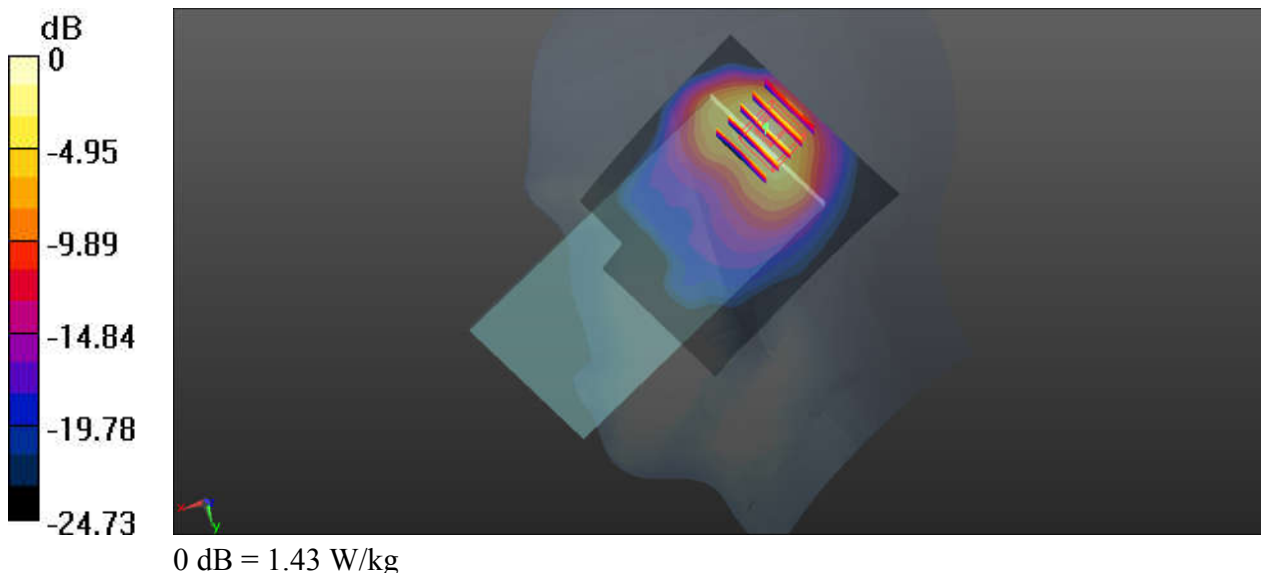
Communication System: UID 0, UMTS (0); Frequency: 1907.6 MHz; Duty Cycle: 1:1
Medium: HSL_1900_200805 Medium parameters used: $f = 1908$ MHz; $\sigma = 1.426$ S/m; $\epsilon_r = 41.113$;
 $\rho = 1000$ kg/m³
Ambient Temperature : 23.5 °C; Liquid Temperature : 22.7 °C

DASY5 Configuration:

- Probe: EX3DV4 - SN7576; ConvF(8.58, 8.58, 8.58); Calibrated: 2020.01.22;
- Sensor-Surface: 2mm (Mechanical Surface Detection)
- Electronics: DAE3 Sn528; Calibrated: 2020.03.16
- Phantom: SAM (Front) with CRP v5.0; Type: QD000P40CD; Serial: TP:1795
- Measurement SW: DASY52, Version 52.8 (8); SEMCAD X Version 14.6.10 (7331)

Ch9538/Area Scan (71x81x1): Interpolated grid: dx=1.500 mm, dy=1.500 mm
Maximum value of SAR (interpolated) = 1.11 W/kg

Ch9538/Zoom Scan (5x5x7)/Cube 0: Measurement grid: dx=8mm, dy=8mm, dz=5mm
Reference Value = 22.31 V/m; Power Drift = -0.09 dB
Peak SAR (extrapolated) = 1.87 W/kg
SAR(1 g) = 0.871 W/kg; SAR(10 g) = 0.400 W/kg
Maximum value of SAR (measured) = 1.43 W/kg



06_CDMA2000 BC0_RC3 SO55_Left Cheek_Ch1013

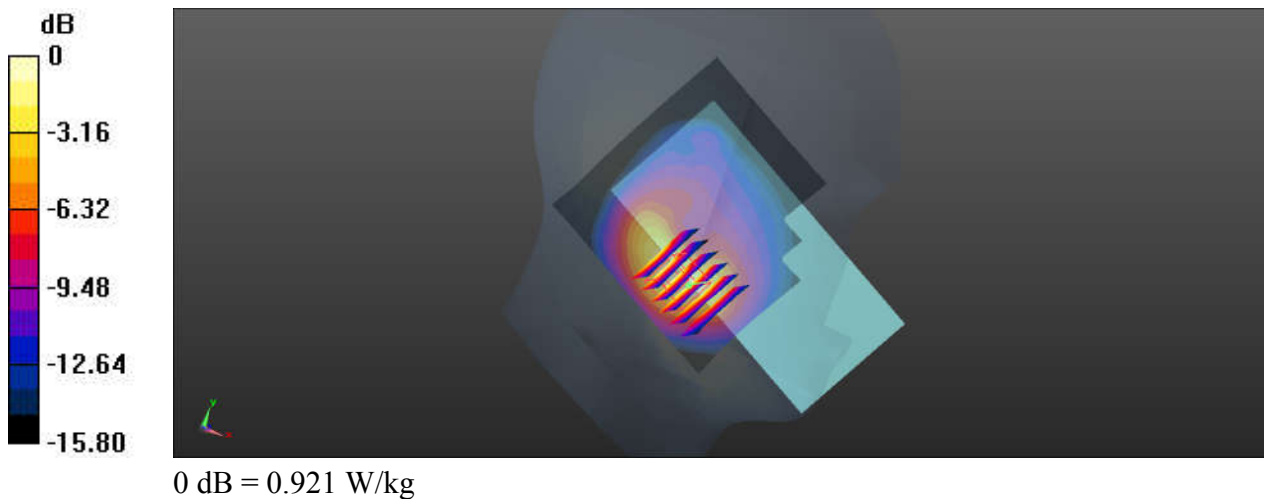
Communication System: UID 0, Generic CDMA (0); Frequency: 824.7 MHz; Duty Cycle: 1:1
Medium: HSL_835_200730 Medium parameters used: $f = 825 \text{ MHz}$; $\sigma = 0.917 \text{ S/m}$; $\epsilon_r = 42.805$; $\rho = 1000 \text{ kg/m}^3$
Ambient Temperature : $23.6 \text{ }^\circ\text{C}$; Liquid Temperature : $22.6 \text{ }^\circ\text{C}$

DASY5 Configuration:

- Probe: EX3DV4 - SN3819; ConvF(9.39, 9.39, 9.39); Calibrated: 2020/4/30
- Sensor-Surface: 2mm (Mechanical Surface Detection)
- Electronics: DAE4 Sn1226; Calibrated: 2020/5/15
- Phantom: SAM (30deg probe tilt) with CRP v4.0; Type: QD000P40CC; Serial: TP:1500
- Measurement SW: DASY52, Version 52.10 (3); SEMCAD X Version 14.6.13 (7474)

Ch1013/Area Scan (81x81x1): Interpolated grid: $dx=1.500 \text{ mm}$, $dy=1.500 \text{ mm}$
Maximum value of SAR (interpolated) = 0.860 W/kg

Ch1013/Zoom Scan (6x6x7)/Cube 0: Measurement grid: $dx=8\text{mm}$, $dy=8\text{mm}$, $dz=5\text{mm}$
Reference Value = 28.29 V/m ; Power Drift = -0.09 dB
Peak SAR (extrapolated) = 1.47 W/kg
SAR(1 g) = 0.702 W/kg ; SAR(10 g) = 0.359 W/kg
Maximum value of SAR (measured) = 0.921 W/kg



07_CDMA2000 BC10_RC3 SO55_Left Cheek_Ch580

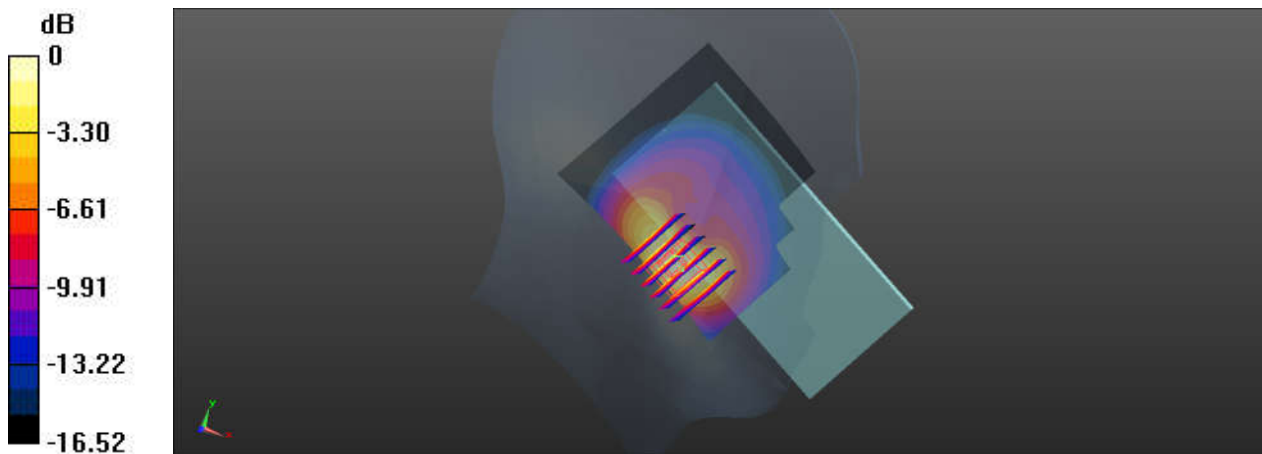
Communication System: UID 0, Generic CDMA (0); Frequency: 820.5 MHz; Duty Cycle: 1:1
Medium: HSL_835_200730 Medium parameters used: $f = 820.5$ MHz; $\sigma = 0.913$ S/m; $\epsilon_r = 42.867$;
 $\rho = 1000$ kg/m³
Ambient Temperature : 23.6 °C; Liquid Temperature : 22.6 °C

DASY5 Configuration:

- Probe: EX3DV4 - SN3819; ConvF(9.39, 9.39, 9.39); Calibrated: 2020/4/30
- Sensor-Surface: 2mm (Mechanical Surface Detection)
- Electronics: DAE4 Sn1226; Calibrated: 2020/5/15
- Phantom: SAM (30deg probe tilt) with CRP v4.0; Type: QD000P40CC; Serial: TP:1500
- Measurement SW: DASY52, Version 52.10 (3); SEMCAD X Version 14.6.13 (7474)

Ch580/Area Scan (71x81x1): Interpolated grid: dx=1.500 mm, dy=1.500 mm
Maximum value of SAR (interpolated) = 0.975 W/kg

Ch580/Zoom Scan (6x6x7)/Cube 0: Measurement grid: dx=8mm, dy=8mm, dz=5mm
Reference Value = 7.786 V/m; Power Drift = -0.02 dB
Peak SAR (extrapolated) = 1.42 W/kg
SAR(1 g) = 0.672 W/kg; SAR(10 g) = 0.344 W/kg
Maximum value of SAR (measured) = 1.02 W/kg



0 dB = 1.02 W/kg

08_CDMA2000 BC1_RC3+SO55_Right Tilted_Ch25

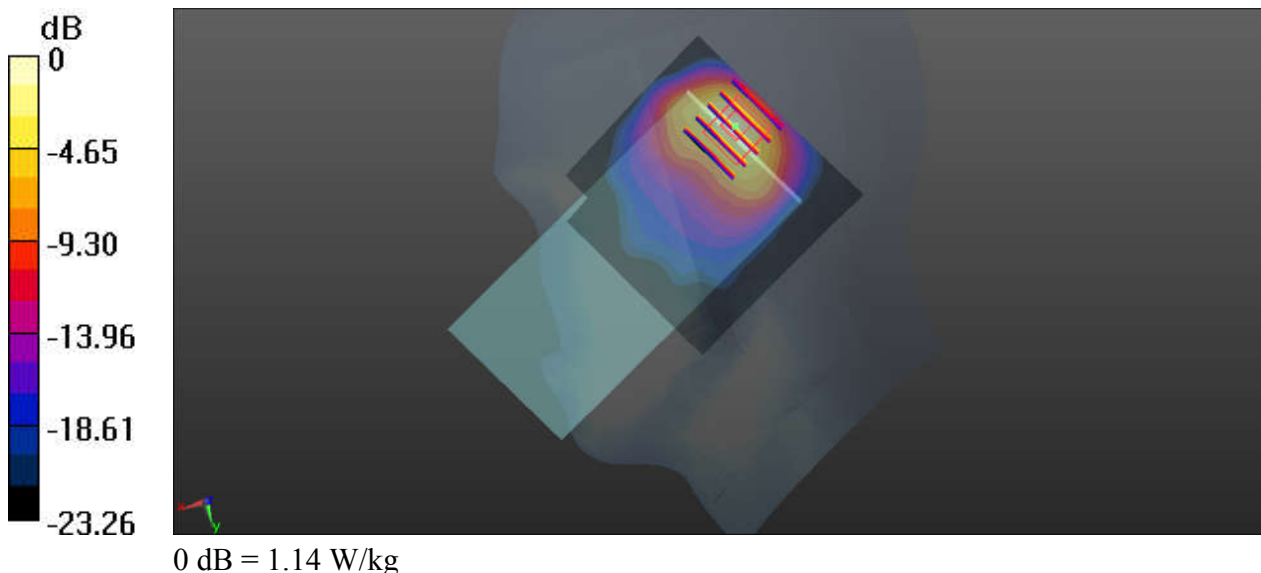
Communication System: UID 0, CDMA2000 (0); Frequency: 1851.25 MHz; Duty Cycle: 1:1
Medium: HSL_1900_200805 Medium parameters used: $f = 1851.25$ MHz; $\sigma = 1.376$ S/m; $\epsilon_r = 41.313$; $\rho = 1000$ kg/m³
Ambient Temperature : 23.5 °C; Liquid Temperature : 22.7 °C

DASY5 Configuration:

- Probe: EX3DV4 - SN7576; ConvF(8.58, 8.58, 8.58); Calibrated: 2020.01.22;
- Sensor-Surface: 2mm (Mechanical Surface Detection)
- Electronics: DAE3 Sn528; Calibrated: 2020.03.16
- Phantom: SAM (Front) with CRP v5.0; Type: QD000P40CD; Serial: TP:1795
- Measurement SW: DASY52, Version 52.8 (8); SEMCAD X Version 14.6.10 (7331)

Ch25/Area Scan (71x71x1): Interpolated grid: dx=1.500 mm, dy=1.500 mm
Maximum value of SAR (interpolated) = 0.978 W/kg

Ch25/Zoom Scan (5x5x7)/Cube 0: Measurement grid: dx=8mm, dy=8mm, dz=5mm
Reference Value = 2.810 V/m; Power Drift = 0.02 dB
Peak SAR (extrapolated) = 1.49 W/kg
SAR(1 g) = 0.690 W/kg; SAR(10 g) = 0.311 W/kg
Maximum value of SAR (measured) = 1.14 W/kg



09_LTE Band 71_20M_QPSK_50_24_Left Cheek_Ch133322

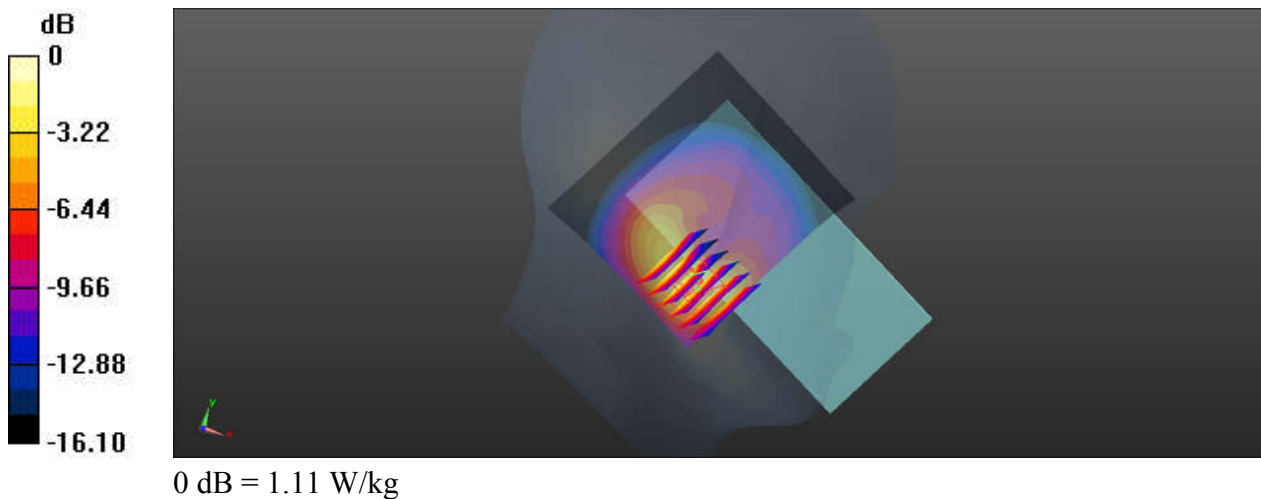
Communication System: UID 0, Generic LTE (0); Frequency: 683 MHz; Duty Cycle: 1:1
Medium: HSL_750_200730 Medium parameters used: $f = 683 \text{ MHz}$; $\sigma = 0.852 \text{ S/m}$; $\epsilon_r = 42.345$; $\rho = 1000 \text{ kg/m}^3$
Ambient Temperature : 23.2 °C; Liquid Temperature : 22.4 °C

DASY5 Configuration:

- Probe: EX3DV4 - SN3819; ConvF(9.64, 9.64, 9.64); Calibrated: 2020/4/30
- Sensor-Surface: 2mm (Mechanical Surface Detection)
- Electronics: DAE4 Sn1226; Calibrated: 2020/5/15
- Phantom: SAM (30deg probe tilt) with CRP v4.0; Type: QD000P40CC; Serial: TP:1500
- Measurement SW: DASY52, Version 52.10 (3); SEMCAD X Version 14.6.13 (7474)

Ch133322/Area Scan (81x71x1): Interpolated grid: $dx=1.500 \text{ mm}$, $dy=1.500 \text{ mm}$
Maximum value of SAR (interpolated) = 0.935 W/kg

Ch133322/Zoom Scan (6x6x7)/Cube 0: Measurement grid: $dx=8\text{mm}$, $dy=8\text{mm}$, $dz=5\text{mm}$
Reference Value = 10.17 V/m; Power Drift = 0.05 dB
Peak SAR (extrapolated) = 1.59 W/kg
SAR(1 g) = 0.765 W/kg; SAR(10 g) = 0.408 W/kg
Maximum value of SAR (measured) = 1.11 W/kg



10_LTE Band 12_10M_QPSK_25_25_Left Cheek_Ch23095

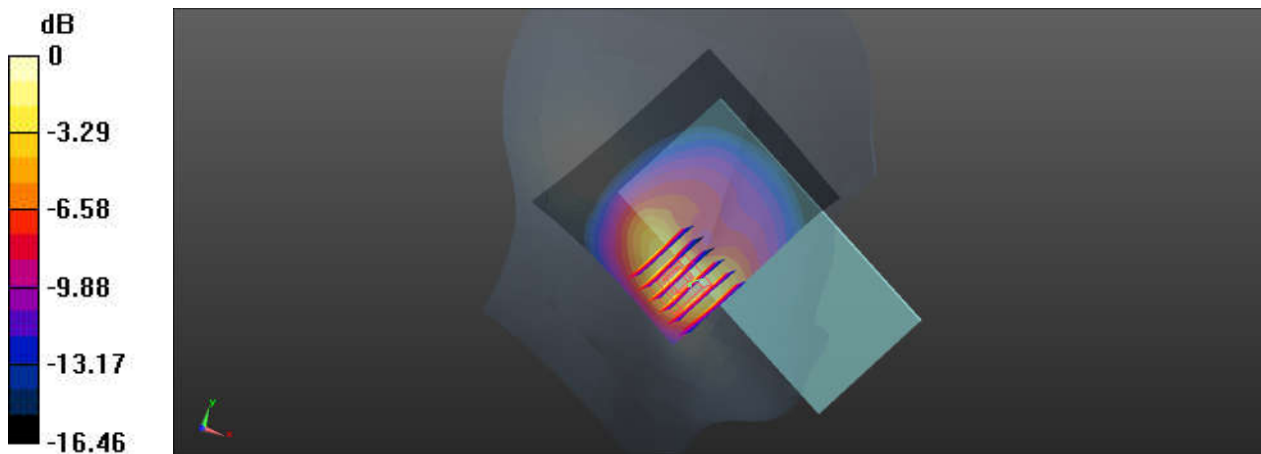
Communication System: UID 0, Generic LTE (0); Frequency: 707.5 MHz; Duty Cycle: 1:1
Medium: HSL_750_200730 Medium parameters used: $f = 707.5$ MHz; $\sigma = 0.872$ S/m; $\epsilon_r = 41.948$;
 $\rho = 1000$ kg/m³
Ambient Temperature : 23.2 °C; Liquid Temperature : 22.4 °C

DASY5 Configuration:

- Probe: EX3DV4 - SN3819; ConvF(9.64, 9.64, 9.64); Calibrated: 2020/4/30
- Sensor-Surface: 2mm (Mechanical Surface Detection)
- Electronics: DAE4 Sn1226; Calibrated: 2020/5/15
- Phantom: SAM (30deg probe tilt) with CRP v4.0; Type: QD000P40CC; Serial: TP:1500
- Measurement SW: DASY52, Version 52.10 (3); SEMCAD X Version 14.6.13 (7474)

Ch23095/Area Scan (81x71x1): Interpolated grid: dx=1.500 mm, dy=1.500 mm
Maximum value of SAR (interpolated) = 1.15 W/kg

Ch23095/Zoom Scan (6x6x7)/Cube 0: Measurement grid: dx=8mm, dy=8mm, dz=5mm
Reference Value = 9.188 V/m; Power Drift = -0.03 dB
Peak SAR (extrapolated) = 1.87 W/kg
SAR(1 g) = 0.876 W/kg; SAR(10 g) = 0.457 W/kg
Maximum value of SAR (measured) = 1.23 W/kg



0 dB = 1.23 W/kg

11_LTE Band 13_10M_QPSK_25_25_Left Cheek_Ch23230

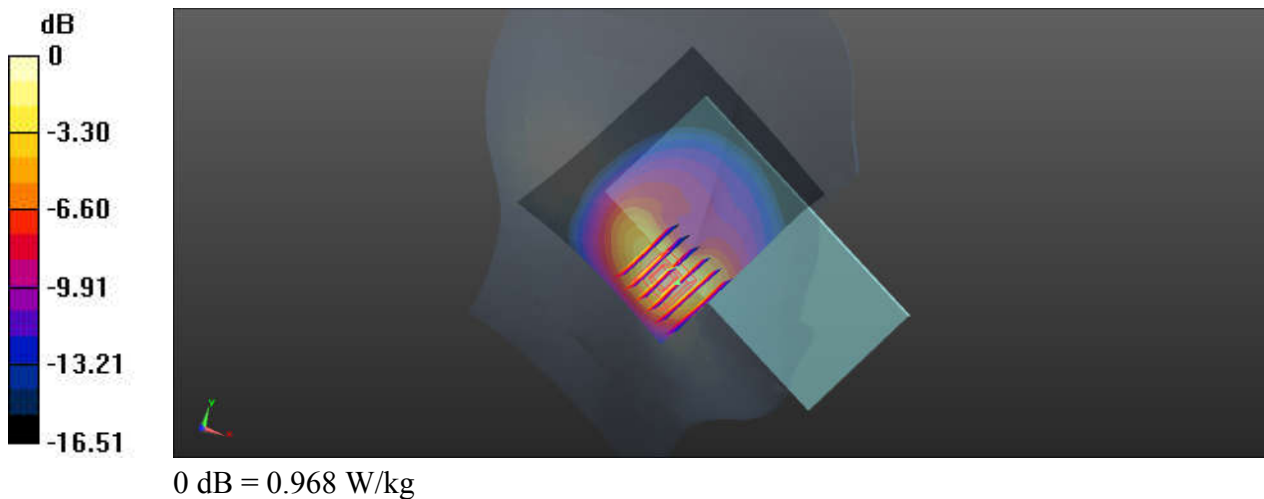
Communication System: UID 0, Generic LTE (0); Frequency: 782 MHz; Duty Cycle: 1:1
Medium: HSL_750_200730 Medium parameters used: $f = 782 \text{ MHz}$; $\sigma = 0.913 \text{ S/m}$; $\epsilon_r = 40.28$; $\rho = 1000 \text{ kg/m}^3$
Ambient Temperature : 23.2 °C; Liquid Temperature : 22.4 °C

DASY5 Configuration:

- Probe: EX3DV4 - SN3819; ConvF(9.64, 9.64, 9.64); Calibrated: 2020/4/30
- Sensor-Surface: 2mm (Mechanical Surface Detection)
- Electronics: DAE4 Sn1226; Calibrated: 2020/5/15
- Phantom: SAM (30deg probe tilt) with CRP v4.0; Type: QD000P40CC; Serial: TP:1500
- Measurement SW: DASY52, Version 52.10 (3); SEMCAD X Version 14.6.13 (7474)

Ch23230/Area Scan (81x71x1): Interpolated grid: $dx=1.500 \text{ mm}$, $dy=1.500 \text{ mm}$
Maximum value of SAR (interpolated) = 0.909 W/kg

Ch23230/Zoom Scan (6x6x7)/Cube 0: Measurement grid: $dx=8\text{mm}$, $dy=8\text{mm}$, $dz=5\text{mm}$
Reference Value = 8.094 V/m; Power Drift = 0.07 dB
Peak SAR (extrapolated) = 1.47 W/kg
SAR(1 g) = 0.699 W/kg; SAR(10 g) = 0.364 W/kg
Maximum value of SAR (measured) = 0.968 W/kg



12_LTE Band 5_10M_QPSK_1_0_Left Cheek_Ch20525

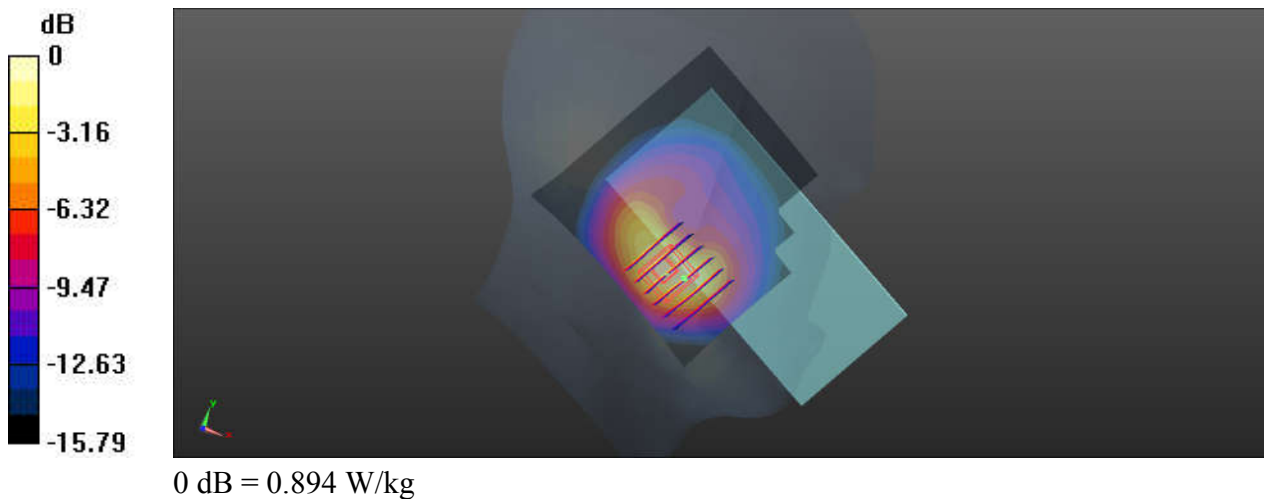
Communication System: UID 0, Generic LTE (0); Frequency: 836.5 MHz; Duty Cycle: 1:1
Medium: HSL_835_200730 Medium parameters used: $f = 836.5$ MHz; $\sigma = 0.928$ S/m; $\epsilon_r = 42.658$;
 $\rho = 1000$ kg/m³
Ambient Temperature : 23.6 °C; Liquid Temperature : 22.6 °C

DASY5 Configuration:

- Probe: EX3DV4 - SN3819; ConvF(9.39, 9.39, 9.39); Calibrated: 2020/4/30
- Sensor-Surface: 2mm (Mechanical Surface Detection)
- Electronics: DAE4 Sn1226; Calibrated: 2020/5/15
- Phantom: SAM (30deg probe tilt) with CRP v4.0; Type: QD000P40CC; Serial: TP:1500
- Measurement SW: DASY52, Version 52.10 (3); SEMCAD X Version 14.6.13 (7474)

Ch20525/Area Scan (81x81x1): Interpolated grid: dx=1.500 mm, dy=1.500 mm
Maximum value of SAR (interpolated) = 0.806 W/kg

Ch20525/Zoom Scan (6x6x7)/Cube 0: Measurement grid: dx=8mm, dy=8mm, dz=5mm
Reference Value = 8.332 V/m; Power Drift = -0.05 dB
Peak SAR (extrapolated) = 1.35 W/kg
SAR(1 g) = 0.673 W/kg; SAR(10 g) = 0.351 W/kg
Maximum value of SAR (measured) = 0.894 W/kg



13_LTE Band 26_15M_QPSK_36_20_Left Cheek_Ch26865

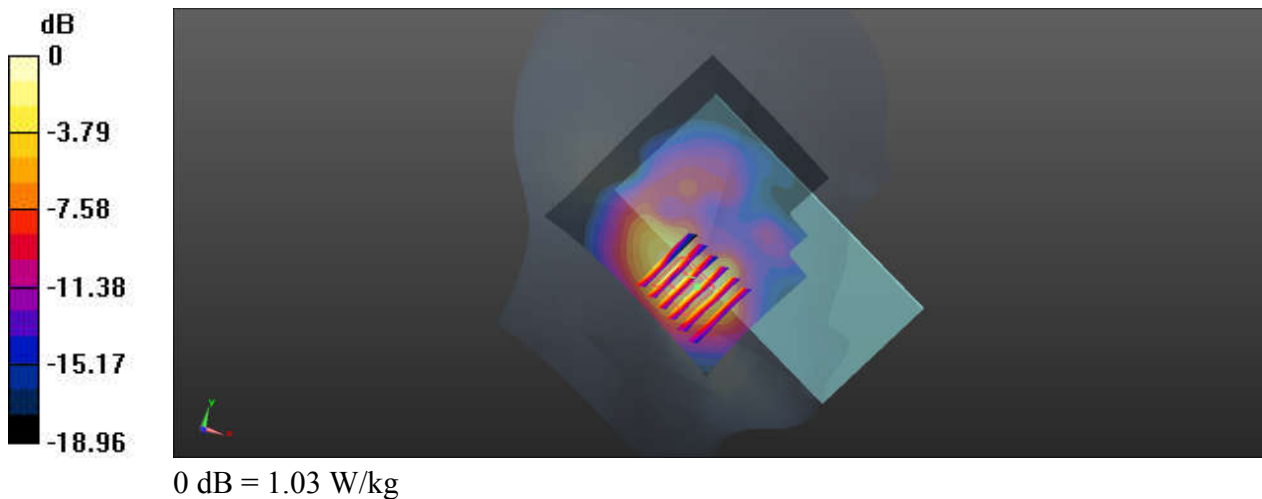
Communication System: UID 0, Generic LTE (0); Frequency: 831.5 MHz; Duty Cycle: 1:1
Medium: HSL_835_200730 Medium parameters used: $f = 831.5$ MHz; $\sigma = 0.923$ S/m; $\epsilon_r = 42.722$;
 $\rho = 1000$ kg/m³
Ambient Temperature : 23.6 °C; Liquid Temperature : 22.6 °C

DASY5 Configuration:

- Probe: EX3DV4 - SN3819; ConvF(9.39, 9.39, 9.39); Calibrated: 2020/4/30
- Sensor-Surface: 2mm (Mechanical Surface Detection)
- Electronics: DAE4 Sn1226; Calibrated: 2020/5/15
- Phantom: SAM (30deg probe tilt) with CRP v4.0; Type: QD000P40CC; Serial: TP:1500
- Measurement SW: DASY52, Version 52.10 (3); SEMCAD X Version 14.6.13 (7474)

Ch26865/Area Scan (81x81x1): Interpolated grid: dx=1.500 mm, dy=1.500 mm
Maximum value of SAR (interpolated) = 0.958 W/kg

Ch26865/Zoom Scan (6x6x7)/Cube 0: Measurement grid: dx=8mm, dy=8mm, dz=5mm
Reference Value = 7.462 V/m; Power Drift = -0.04 dB
Peak SAR (extrapolated) = 1.56 W/kg
SAR(1 g) = 0.755 W/kg; SAR(10 g) = 0.387 W/kg
Maximum value of SAR (measured) = 1.03 W/kg



14_LTE Band 66_20M_QPSK_50_0_Right Tilted_Ch132572

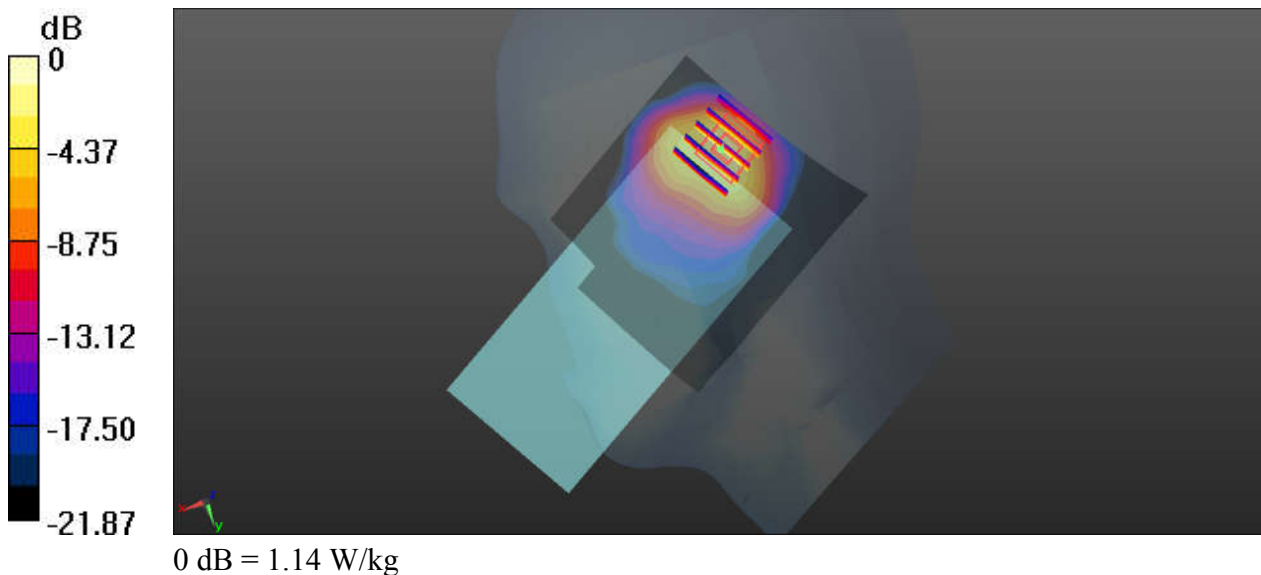
Communication System: UID 0, LTE (0); Frequency: 1770 MHz; Duty Cycle: 1:1
Medium: HSL_1750_200807 Medium parameters used: $f = 1770$ MHz; $\sigma = 1.426$ S/m; $\epsilon_r = 41.353$;
 $\rho = 1000$ kg/m³
Ambient Temperature : 23.4 °C; Liquid Temperature : 22.7 °C

DASY5 Configuration:

- Probe: EX3DV4 - SN7576; ConvF(8.88, 8.88, 8.88); Calibrated: 2020.01.22;
- Sensor-Surface: 2mm (Mechanical Surface Detection)
- Electronics: DAE3 Sn528; Calibrated: 2020.03.16
- Phantom: SAM (Front) with CRP v5.0; Type: QD000P40CD; Serial: TP:1795
- Measurement SW: DASY52, Version 52.8 (8); SEMCAD X Version 14.6.10 (7331)

Ch132572/Area Scan (71x81x1): Interpolated grid: dx=1.500 mm, dy=1.500 mm
Maximum value of SAR (interpolated) = 0.815 W/kg

Ch132572/Zoom Scan (5x5x7)/Cube 0: Measurement grid: dx=8mm, dy=8mm, dz=5mm
Reference Value = 2.730 V/m; Power Drift = -0.08 dB
Peak SAR (extrapolated) = 1.49 W/kg
SAR(1 g) = 0.705 W/kg; SAR(10 g) = 0.321 W/kg
Maximum value of SAR (measured) = 1.14 W/kg



15_LTE Band 25_20M_QPSK_50_24_Right Tilted_Ch26590

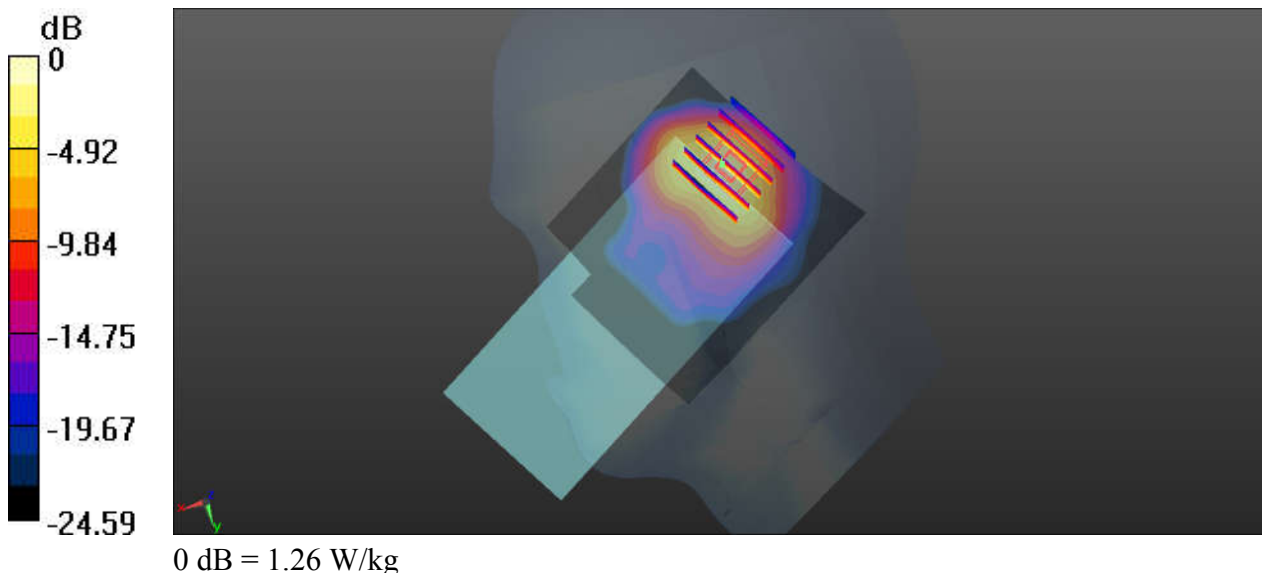
Communication System: UID 0, LTE (0); Frequency: 1905 MHz; Duty Cycle: 1:1
Medium: HSL_1900_200805 Medium parameters used: $f = 1905$ MHz; $\sigma = 1.424$ S/m; $\epsilon_r = 41.122$;
 $\rho = 1000$ kg/m³
Ambient Temperature : 23.5 °C; Liquid Temperature : 22.7 °C

DASY5 Configuration:

- Probe: EX3DV4 - SN7576; ConvF(8.58, 8.58, 8.58); Calibrated: 2020.01.22;
- Sensor-Surface: 2mm (Mechanical Surface Detection)
- Electronics: DAE3 Sn528; Calibrated: 2020.03.16
- Phantom: SAM (Front) with CRP v5.0; Type: QD000P40CD; Serial: TP:1795
- Measurement SW: DASY52, Version 52.8 (8); SEMCAD X Version 14.6.10 (7331)

Ch26590/Area Scan (71x81x1): Interpolated grid: dx=1.500 mm, dy=1.500 mm
Maximum value of SAR (interpolated) = 0.949 W/kg

Ch26590/Zoom Scan (6x6x7)/Cube 0: Measurement grid: dx=8mm, dy=8mm, dz=5mm
Reference Value = 24.98 V/m; Power Drift = -0.01 dB
Peak SAR (extrapolated) = 1.83 W/kg
SAR(1 g) = 0.818 W/kg; SAR(10 g) = 0.363 W/kg
Maximum value of SAR (measured) = 1.26 W/kg



16_LTE Band 30_10M_QPSK_25_12_Right Tilted_Ch27710

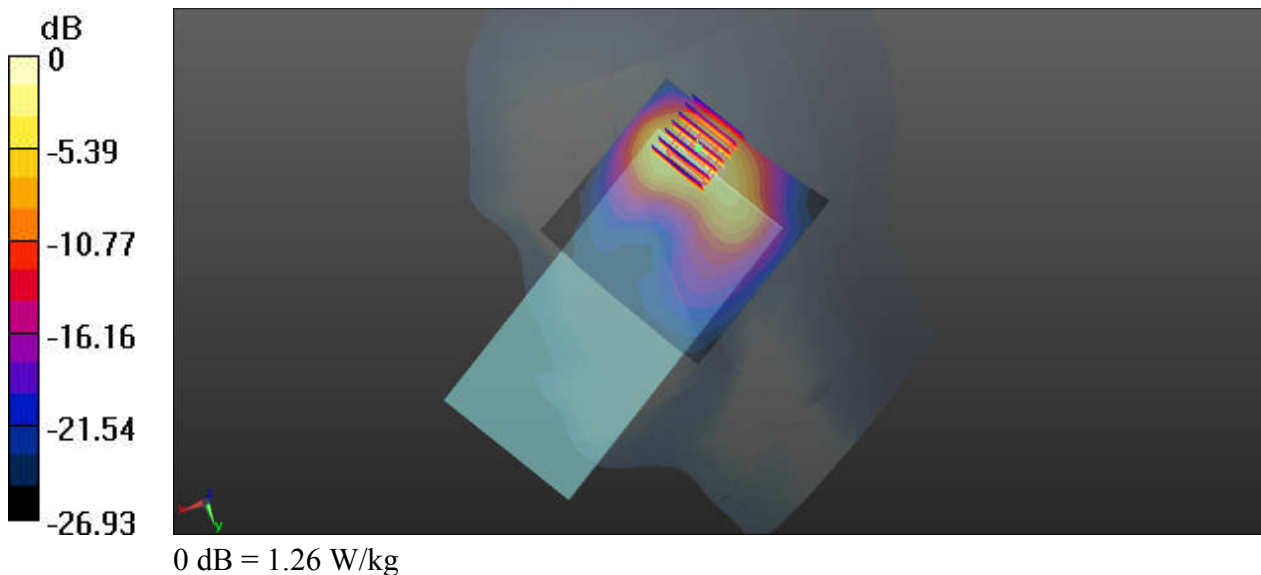
Communication System: UID 0, LTE (0); Frequency: 2310 MHz; Duty Cycle: 1:1
Medium: HSL_2300_200803 Medium parameters used: $f = 2310$ MHz; $\sigma = 1.689$ S/m; $\epsilon_r = 38.197$;
 $\rho = 1000$ kg/m³
Ambient Temperature : 23.5 °C ; Liquid Temperature : 22.4 °C

DASY5 Configuration:

- Probe: EX3DV4 - SN7576; ConvF(8.03, 8.03, 8.03); Calibrated: 2020.01.22;
- Sensor-Surface: 2mm (Mechanical Surface Detection)
- Electronics: DAE3 Sn528; Calibrated: 2020.03.16
- Phantom: SAM (Front) with CRP v5.0; Type: QD000P40CD; Serial: TP:1795
- Measurement SW: DASY52, Version 52.8 (8); SEMCAD X Version 14.6.10 (7331)

Ch27710/Area Scan (81x81x1): Interpolated grid: dx=1.200 mm, dy=1.200 mm
Maximum value of SAR (interpolated) = 1.13 W/kg

Ch27710/Zoom Scan (7x7x7)/Cube 0: Measurement grid: dx=5mm, dy=5mm, dz=5mm
Reference Value = 20.17 V/m; Power Drift = -0.06 dB
Peak SAR (extrapolated) = 1.81 W/kg
SAR(1 g) = 0.743 W/kg; SAR(10 g) = 0.310 W/kg
Maximum value of SAR (measured) = 1.26 W/kg



17_LTE Band 7_20M_QPSK_50_24_Right Tilted_Ch20850

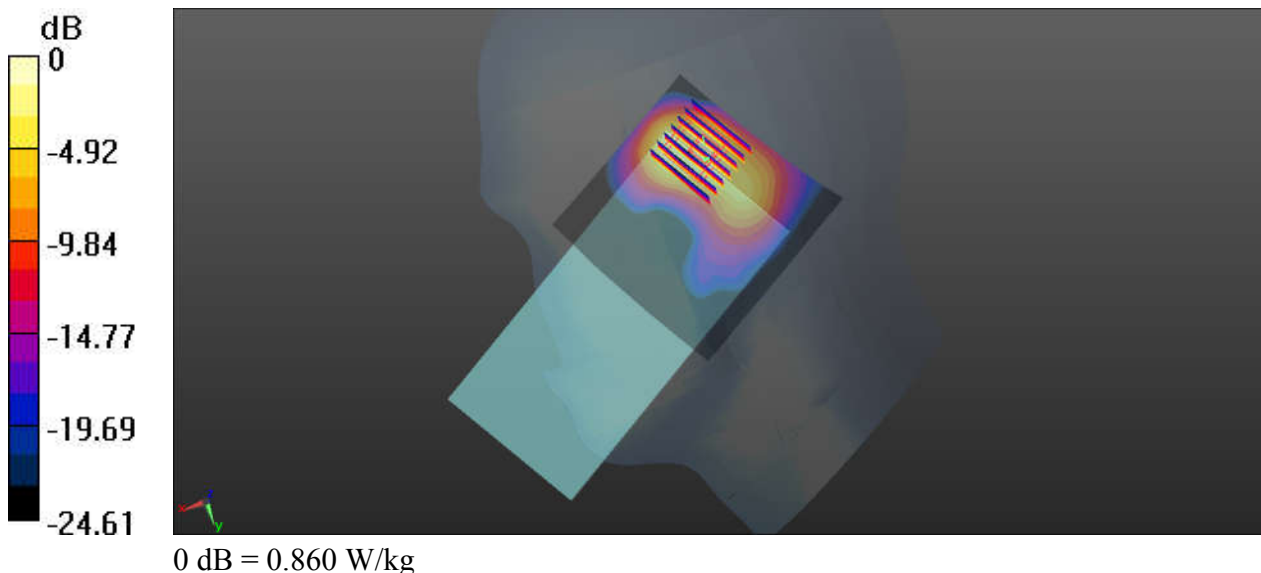
Communication System: UID 0, LTE (0); Frequency: 2510 MHz; Duty Cycle: 1:1
Medium: HSL_2600_200731 Medium parameters used: $f = 2510$ MHz; $\sigma = 1.9$ S/m; $\epsilon_r = 38.66$; $\rho = 1000$ kg/m³
Ambient Temperature : 23.7 °C; Liquid Temperature : 22.5 °C

DASY5 Configuration:

- Probe: EX3DV4 - SN7576; ConvF(7.47, 7.47, 7.47); Calibrated: 2020.01.22;
- Sensor-Surface: 2mm (Mechanical Surface Detection)
- Electronics: DAE3 Sn528; Calibrated: 2020.03.16
- Phantom: SAM (Front) with CRP v5.0; Type: QD000P40CD; Serial: TP:1795
- Measurement SW: DASY52, Version 52.8 (8); SEMCAD X Version 14.6.10 (7331)

Ch20850/Area Scan (81x81x1): Interpolated grid: dx=1.200 mm, dy=1.200 mm
Maximum value of SAR (interpolated) = 0.727 W/kg

Ch20850/Zoom Scan (8x7x7)/Cube 0: Measurement grid: dx=5mm, dy=5mm, dz=5mm
Reference Value = 15.00 V/m; Power Drift = 0.03 dB
Peak SAR (extrapolated) = 1.33 W/kg
SAR(1 g) = 0.512 W/kg; SAR(10 g) = 0.214 W/kg
Maximum value of SAR (measured) = 0.860 W/kg



18_LTE Band 41_20M_QPSK_50_50_Right Tilted_Ch41490

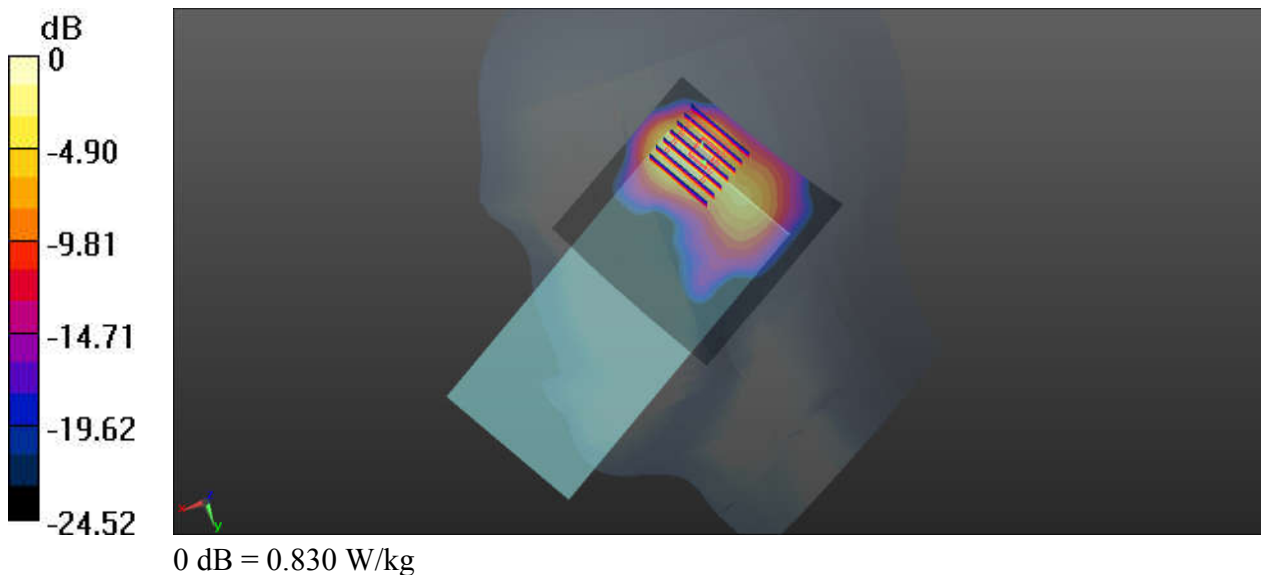
Communication System: UID 0, LTE (0); Frequency: 2680 MHz; Duty Cycle: 1:1.59
Medium: HSL_2600_200731 Medium parameters used: $f = 2680$ MHz; $\sigma = 2.056$ S/m; $\epsilon_r = 37.972$;
 $\rho = 1000$ kg/m³
Ambient Temperature : 23.7 °C ; Liquid Temperature : 22.5 °C

DASY5 Configuration:

- Probe: EX3DV4 - SN7576; ConvF(7.47, 7.47, 7.47); Calibrated: 2020.01.22;
- Sensor-Surface: 2mm (Mechanical Surface Detection)
- Electronics: DAE3 Sn528; Calibrated: 2020.03.16
- Phantom: SAM (Front) with CRP v5.0; Type: QD000P40CD; Serial: TP:1795
- Measurement SW: DASY52, Version 52.8 (8); SEMCAD X Version 14.6.10 (7331)

Ch41490/Area Scan (81x81x1): Interpolated grid: dx=1.200 mm, dy=1.200 mm
Maximum value of SAR (interpolated) = 0.757 W/kg

Ch41490/Zoom Scan (8x7x7)/Cube 0: Measurement grid: dx=5mm, dy=5mm, dz=5mm
Reference Value = 12.91 V/m; Power Drift = 0.04 dB
Peak SAR (extrapolated) = 1.28 W/kg
SAR(1 g) = 0.480 W/kg; SAR(10 g) = 0.201 W/kg
Maximum value of SAR (measured) = 0.830 W/kg



19_LTE Band 41(HPUE)_20M_QPSK_50_50_Right Tilted_Ch39750

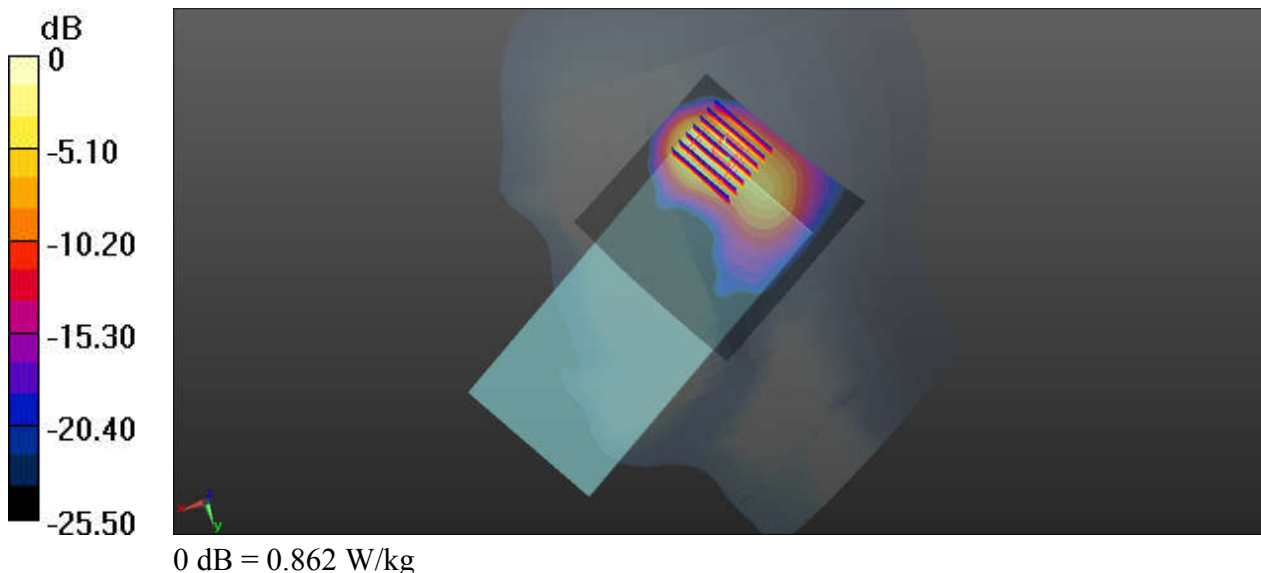
Communication System: UID 0, LTE (0); Frequency: 2506 MHz;Duty Cycle: 1:2.331
Medium: HSL_2600_200731 Medium parameters used: $f = 2506$ MHz; $\sigma = 1.896$ S/m; $\epsilon_r = 38.672$;
 $\rho = 1000$ kg/m³
Ambient Temperature : 23.7 °C ; Liquid Temperature : 22.5 °C

DASY5 Configuration:

- Probe: EX3DV4 - SN7576; ConvF(7.47, 7.47, 7.47); Calibrated: 2020.01.22;
- Sensor-Surface: 2mm (Mechanical Surface Detection)
- Electronics: DAE3 Sn528; Calibrated: 2020.03.16
- Phantom: SAM (Front) with CRP v5.0; Type: QD000P40CD; Serial: TP:1795
- Measurement SW: DASY52, Version 52.8 (8); SEMCAD X Version 14.6.10 (7331)

Ch39750/Area Scan (81x81x1): Interpolated grid: dx=1.200 mm, dy=1.200 mm
Maximum value of SAR (interpolated) = 0.742 W/kg

Ch39750/Zoom Scan (8x7x7)/Cube 0: Measurement grid: dx=5mm, dy=5mm, dz=5mm
Reference Value = 14.36 V/m; Power Drift = 0.06 dB
Peak SAR (extrapolated) = 1.31 W/kg
SAR(1 g) = 0.501 W/kg; SAR(10 g) = 0.208 W/kg
Maximum value of SAR (measured) = 0.862 W/kg



20_LTE Band 48_20M_QPSK_1_0_Right Tilted_Ch55340

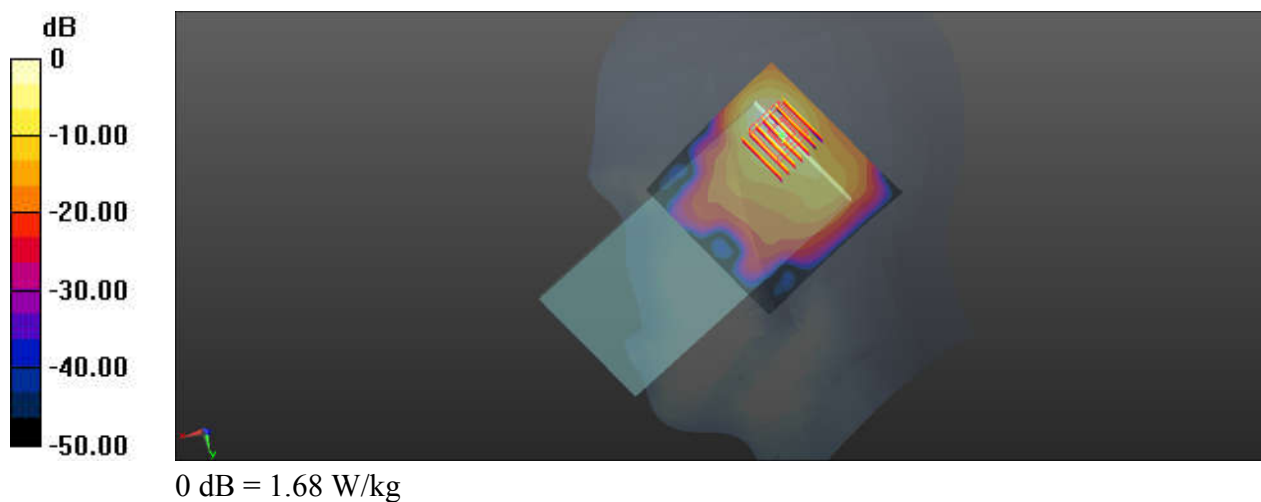
Communication System: UID 0, Generic LTE (0); Frequency: 3560 MHz; Duty Cycle: 1:1.59
Medium: HSL_3500_200801 Medium parameters used: $f = 3560$ MHz; $\sigma = 2.951$ S/m; $\epsilon_r = 39.497$;
 $\rho = 1000$ kg/m³
Ambient Temperature : 23.3 °C; Liquid Temperature : 22.5 °C

DASY5 Configuration:

- Probe: EX3DV4 - SN3819; ConvF(6.84, 6.84, 6.84); Calibrated: 2020/4/30
- Sensor-Surface: 1.4mm (Mechanical Surface Detection)
- Electronics: DAE4 Sn1226; Calibrated: 2020/5/15
- Phantom: SAM (30deg probe tilt) with CRP v4.0; Type: QD000P40CC; Serial: TP:1500
- Measurement SW: DASY52, Version 52.10 (3); SEMCAD X Version 14.6.13 (7474)

Ch55340/Area Scan (81x81x1): Interpolated grid: dx=1.200 mm, dy=1.200 mm
Maximum value of SAR (interpolated) = 1.46 W/kg

Ch55340/Zoom Scan (7x7x7)/Cube 0: Measurement grid: dx=5mm, dy=5mm, dz=1.4mm
Reference Value = 12.51 V/m; Power Drift = -0.04 dB
Peak SAR (extrapolated) = 2.76 W/kg
SAR(1 g) = 0.831 W/kg; SAR(10 g) = 0.280 W/kg
Maximum value of SAR (measured) = 1.68 W/kg



21_N71_20M_BPSK_1_53_DFT-15_Left Cheek_Ch136100

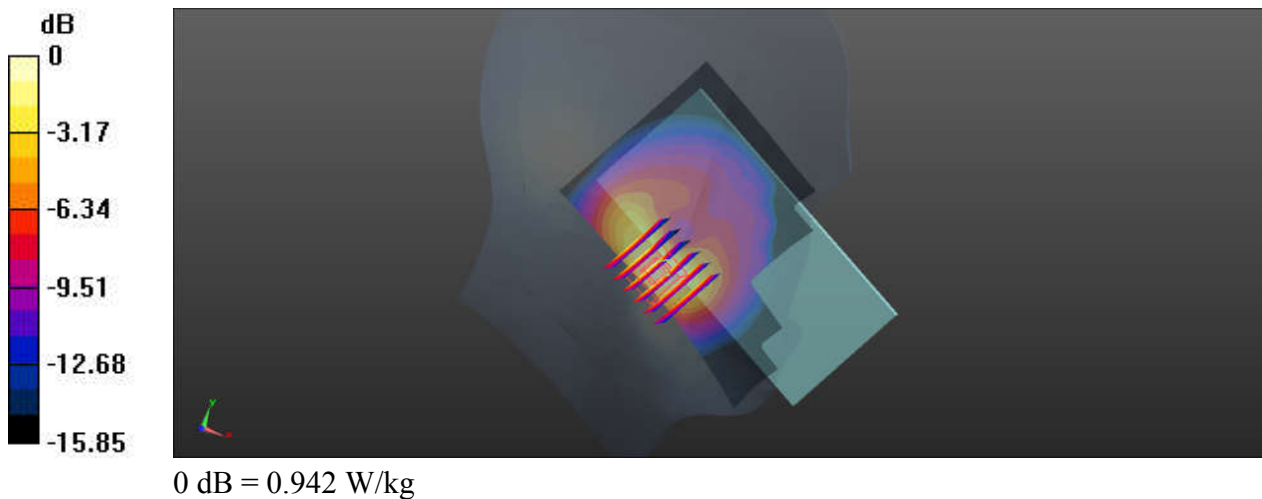
Communication System: UID 0, 5GNR (0); Frequency: 680.5 MHz; Duty Cycle: 1:1
Medium: HSL_750_200713 Medium parameters used: $f = 680.5$ MHz; $\sigma = 0.868$ S/m; $\epsilon_r = 42.168$;
 $\rho = 1000$ kg/m³
Ambient Temperature : 23.2 °C; Liquid Temperature : 22.3 °C

DASY5 Configuration:

- Probe: EX3DV4 - SN3819; ConvF(9.64, 9.64, 9.64); Calibrated: 2020/4/30
- Sensor-Surface: 2mm (Mechanical Surface Detection)
- Electronics: DAE3 Sn528; Calibrated: 2020/3/16
- Phantom: SAM (30deg probe tilt) with CRP v4.0; Type: QD000P40CC; Serial: TP:1500
- Measurement SW: DASY52, Version 52.10 (3); SEMCAD X Version 14.6.13 (7474)

Ch136100/Area Scan (71x121x1): Interpolated grid: dx=1.500 mm, dy=1.500 mm
Maximum value of SAR (interpolated) = 0.927 W/kg

Ch136100/Zoom Scan (6x6x7)/Cube 0: Measurement grid: dx=8mm, dy=8mm, dz=5mm
Reference Value = 9.660 V/m; Power Drift = -0.06 dB
Peak SAR (extrapolated) = 1.45 W/kg
SAR(1 g) = 0.689 W/kg; SAR(10 g) = 0.361 W/kg
Maximum value of SAR (measured) = 0.942 W/kg



22_N66_20M_BPSK_1_53_DFT-15_Right Tilted_Ch354000

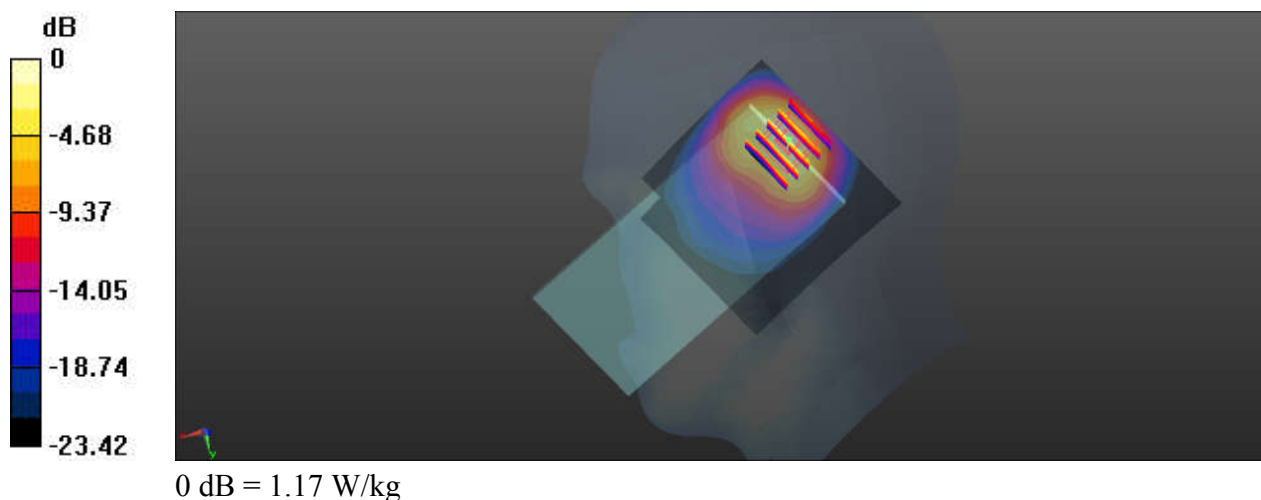
Communication System: UID 0, 5GNR (0); Frequency: 1770 MHz; Duty Cycle: 1:1
Medium: HSL_1750_200725 Medium parameters used: $f = 1770$ MHz; $\sigma = 1.413$ S/m; $\epsilon_r = 40.683$;
 $\rho = 1000$ kg/m³
Ambient Temperature : 23.4 °C; Liquid Temperature : 22.6 °C

DASY5 Configuration:

- Probe: EX3DV4 - SN3819; ConvF(8.43, 8.43, 8.43); Calibrated: 2020/4/30
- Sensor-Surface: 2mm (Mechanical Surface Detection)
- Electronics: DAE4 Sn1226; Calibrated: 2020/5/15
- Phantom: SAM (30deg probe tilt) with CRP v4.0; Type: QD000P40CC; Serial: TP:1500
- Measurement SW: DASY52, Version 52.10 (3); SEMCAD X Version 14.6.13 (7474)

Ch354000/Area Scan (71x71x1): Interpolated grid: dx=1.500 mm, dy=1.500 mm
Maximum value of SAR (interpolated) = 1.00 W/kg

Ch354000/Zoom Scan (5x5x7)/Cube 0: Measurement grid: dx=8mm, dy=8mm, dz=5mm
Reference Value = 23.65 V/m; Power Drift = 0.02 dB
Peak SAR (extrapolated) = 1.52 W/kg
SAR(1 g) = 0.722 W/kg; SAR(10 g) = 0.336 W/kg
Maximum value of SAR (measured) = 1.17 W/kg



23_N2_20M_BPSK_50_28_DFT-15_Right Tilted_Ch372000

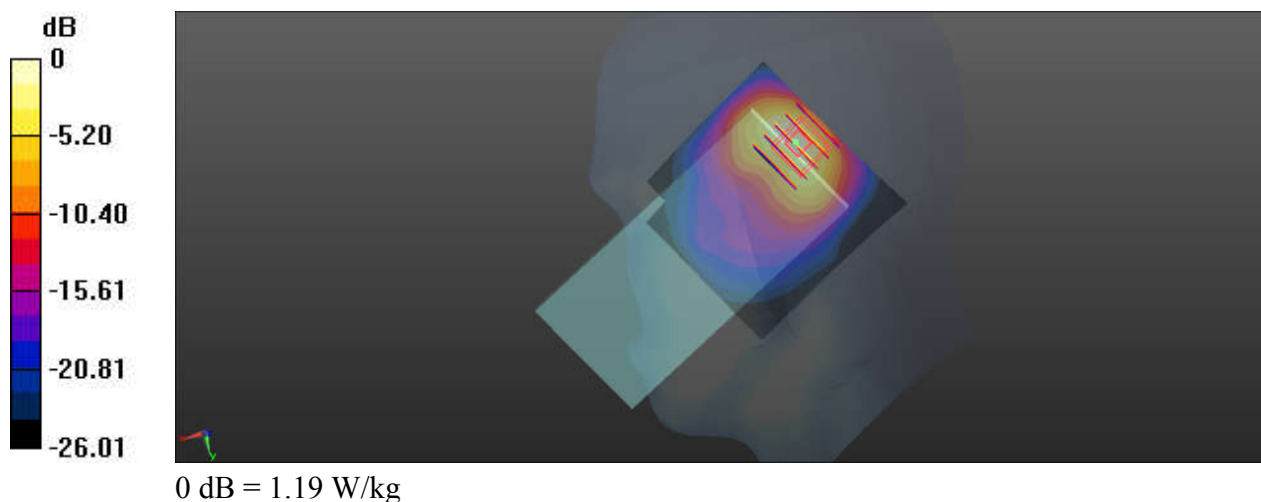
Communication System: UID 0, 5GNR (0); Frequency: 1860 MHz; Duty Cycle: 1:1
Medium: HSL_1900_200725 Medium parameters used: $f = 1860$ MHz; $\sigma = 1.409$ S/m; $\epsilon_r = 40.188$;
 $\rho = 1000$ kg/m³
Ambient Temperature : 23.6 °C; Liquid Temperature : 22.5 °C

DASY5 Configuration:

- Probe: EX3DV4 - SN3819; ConvF(8.1, 8.1, 8.1); Calibrated: 2020/4/30
- Sensor-Surface: 2mm (Mechanical Surface Detection)
- Electronics: DAE4 Sn1226; Calibrated: 2020/5/15
- Phantom: SAM (30deg probe tilt) with CRP v4.0; Type: QD000P40CC; Serial: TP:1500
- Measurement SW: DASY52, Version 52.10 (3); SEMCAD X Version 14.6.13 (7474)

Ch372000/Area Scan (71x71x1): Interpolated grid: dx=1.500 mm, dy=1.500 mm
Maximum value of SAR (interpolated) = 1.12 W/kg

Ch372000/Zoom Scan (5x5x7)/Cube 0: Measurement grid: dx=8mm, dy=8mm, dz=5mm
Reference Value = 22.80 V/m; Power Drift = -0.07 dB
Peak SAR (extrapolated) = 1.58 W/kg
SAR(1 g) = 0.724 W/kg; SAR(10 g) = 0.327 W/kg
Maximum value of SAR (measured) = 1.19 W/kg



24_N25_20M_BPSK_1_53_DFT-15_Right Tilted_Ch381000

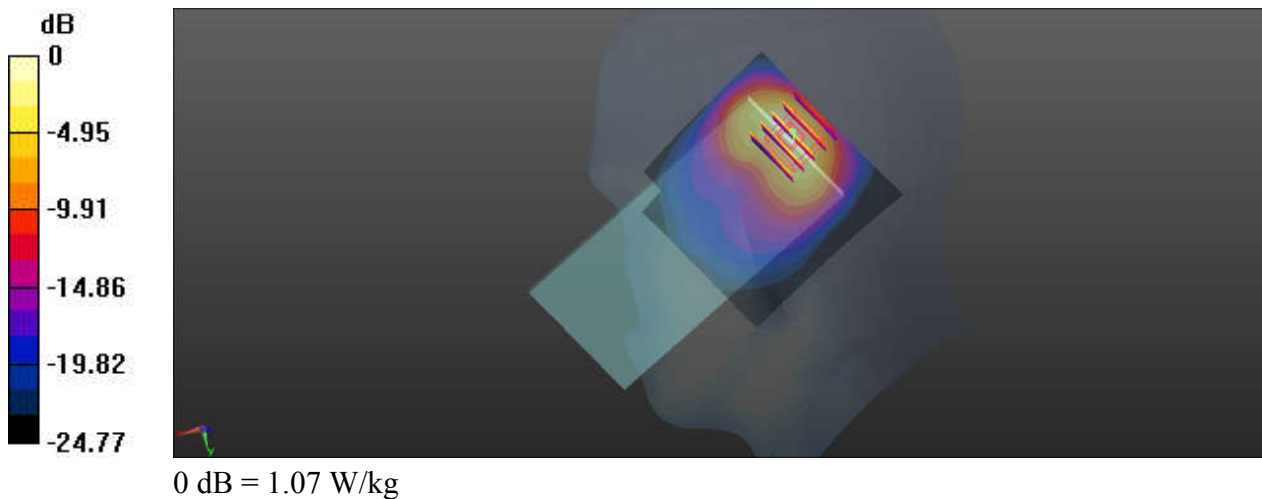
Communication System: UID 0, 5GNR (0); Frequency: 1905 MHz; Duty Cycle: 1:1
Medium: HSL_1900_200725 Medium parameters used: $f = 1905$ MHz; $\sigma = 1.455$ S/m; $\epsilon_r = 39.98$; $\rho = 1000$ kg/m³
Ambient Temperature : 23.6 °C; Liquid Temperature : 22.5 °C

DASY5 Configuration:

- Probe: EX3DV4 - SN3819; ConvF(8.1, 8.1, 8.1); Calibrated: 2020/4/30
- Sensor-Surface: 2mm (Mechanical Surface Detection)
- Electronics: DAE4 Sn1226; Calibrated: 2020/5/15
- Phantom: SAM (30deg probe tilt) with CRP v4.0; Type: QD000P40CC; Serial: TP:1500
- Measurement SW: DASY52, Version 52.10 (3); SEMCAD X Version 14.6.13 (7474)

Ch381000/Area Scan (71x71x1): Interpolated grid: dx=1.500 mm, dy=1.500 mm
Maximum value of SAR (interpolated) = 0.955 W/kg

Ch381000/Zoom Scan (5x5x7)/Cube 0: Measurement grid: dx=8mm, dy=8mm, dz=5mm
Reference Value = 23.57 V/m; Power Drift = -0.06 dB
Peak SAR (extrapolated) = 1.46 W/kg
SAR(1 g) = 0.681 W/kg; SAR(10 g) = 0.311 W/kg
Maximum value of SAR (measured) = 1.07 W/kg



25_N41_100M_BPSK_1_1_DFT-30_Right Tilted_Ch509202

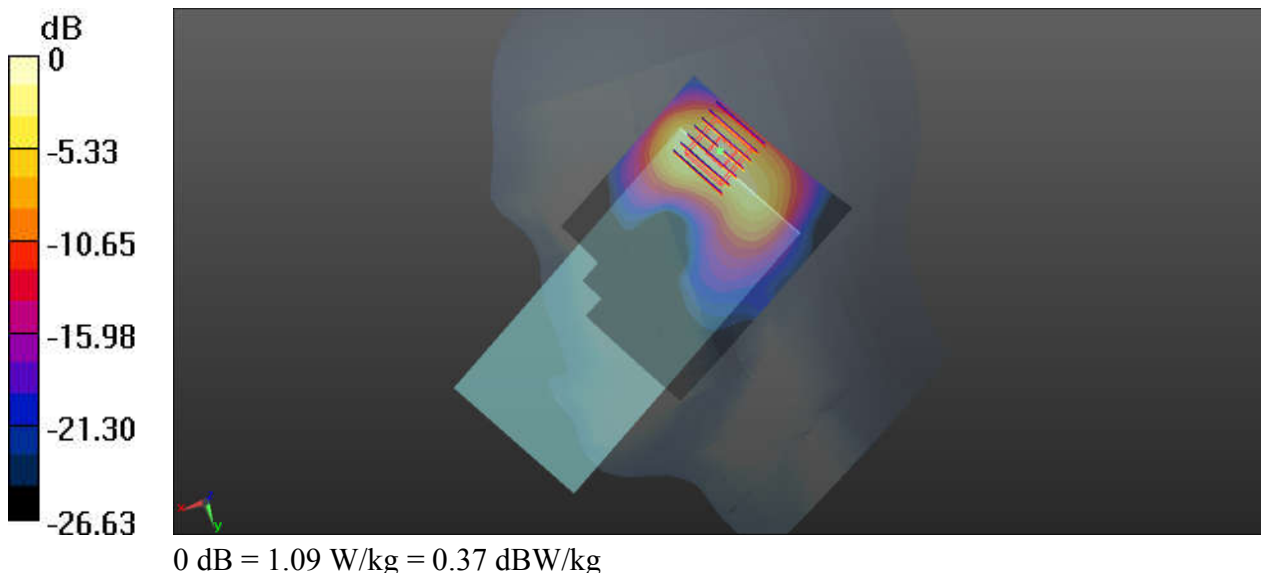
Communication System: UID 0, 5G NR (0); Frequency: 2546.01 MHz; Duty Cycle: 1:1
Medium: HSL_2600_200731 Medium parameters used: $f = 2546.01$ MHz; $\sigma = 1.932$ S/m; $\epsilon_r = 38.542$; $\rho = 1000$ kg/m³
Ambient Temperature : 23.7 °C; Liquid Temperature : 22.5 °C

DASY5 Configuration:

- Probe: EX3DV4 - SN7576; ConvF(7.47, 7.47, 7.47); Calibrated: 2020.01.22;
- Sensor-Surface: 2mm (Mechanical Surface Detection)
- Electronics: DAE3 Sn528; Calibrated: 2020.03.16
- Phantom: SAM (Front) with CRP v5.0; Type: QD000P40CD; Serial: TP:1795
- Measurement SW: DASY52, Version 52.8 (8); SEMCAD X Version 14.6.10 (7331)

Ch509202/Area Scan (81x81x1): Interpolated grid: dx=1.200 mm, dy=1.200 mm
Maximum value of SAR (interpolated) = 1.18 W/kg

Ch509202/Zoom Scan (7x7x7)/Cube 0: Measurement grid: dx=5mm, dy=5mm, dz=5mm
Reference Value = 18.87 V/m; Power Drift = 0.14 dB
Peak SAR (extrapolated) = 1.98 W/kg
SAR(1 g) = 0.792 W/kg; SAR(10 g) = 0.333 W/kg
Maximum value of SAR (measured) = 1.34 W/kg



26_N41(HPUE)_100M_BPSK_1_1_DFT-30_Right Tilted_Ch509202

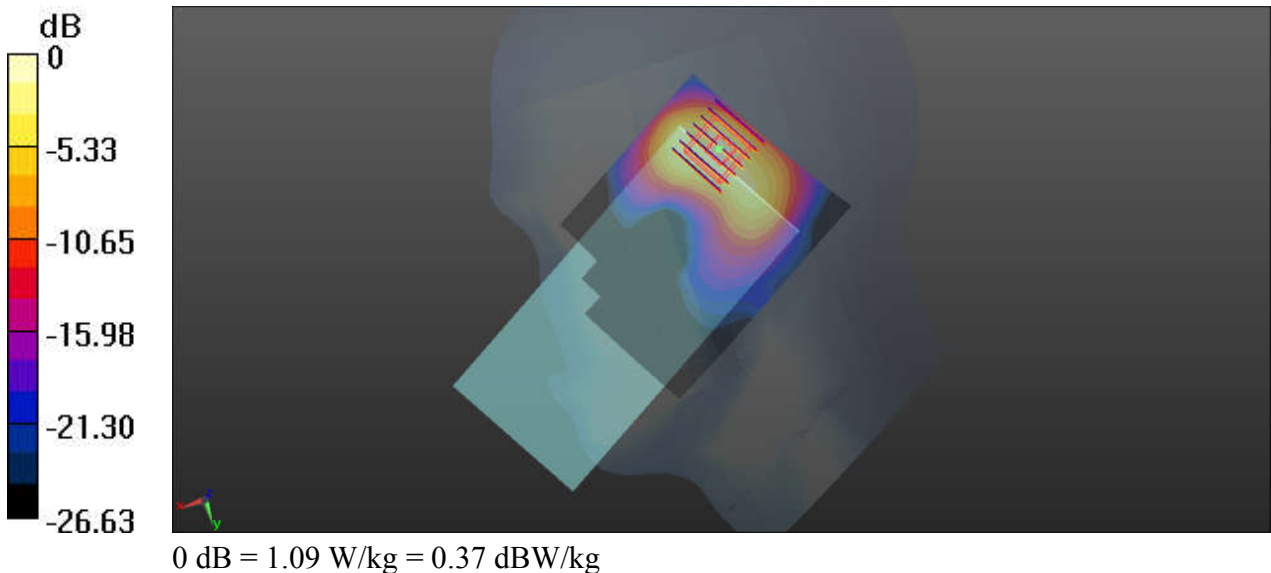
Communication System: UID 0, 5G NR (0); Frequency: 2546.01 MHz; Duty Cycle: 1:1
 Medium: HSL_2600_200731 Medium parameters used: $f = 2546.01$ MHz; $\sigma = 1.932$ S/m; $\epsilon_r = 38.542$; $\rho = 1000$ kg/m³
 Ambient Temperature : 23.7 °C; Liquid Temperature : 22.5 °C

DASY5 Configuration:

- Probe: EX3DV4 - SN7576; ConvF(7.47, 7.47, 7.47); Calibrated: 2020.01.22;
- Sensor-Surface: 2mm (Mechanical Surface Detection)
- Electronics: DAE3 Sn528; Calibrated: 2020.03.16
- Phantom: SAM (Front) with CRP v5.0; Type: QD000P40CD; Serial: TP:1795
- Measurement SW: DASY52, Version 52.8 (8); SEMCAD X Version 14.6.10 (7331)

Ch509202/Area Scan (81x81x1): Interpolated grid: dx=1.200 mm, dy=1.200 mm
 Maximum value of SAR (interpolated) = 1.18 W/kg

Ch509202/Zoom Scan (7x7x7)/Cube 0: Measurement grid: dx=5mm, dy=5mm, dz=5mm
 Reference Value = 18.87 V/m; Power Drift = 0.14 dB
 Peak SAR (extrapolated) = 1.98 W/kg
SAR(1 g) = 0.792 W/kg; SAR(10 g) = 0.333 W/kg
 Maximum value of SAR (measured) = 1.34 W/kg



27_N5_20M_BPSK_1_53_DFT-15_Left Cheek_Ch167300

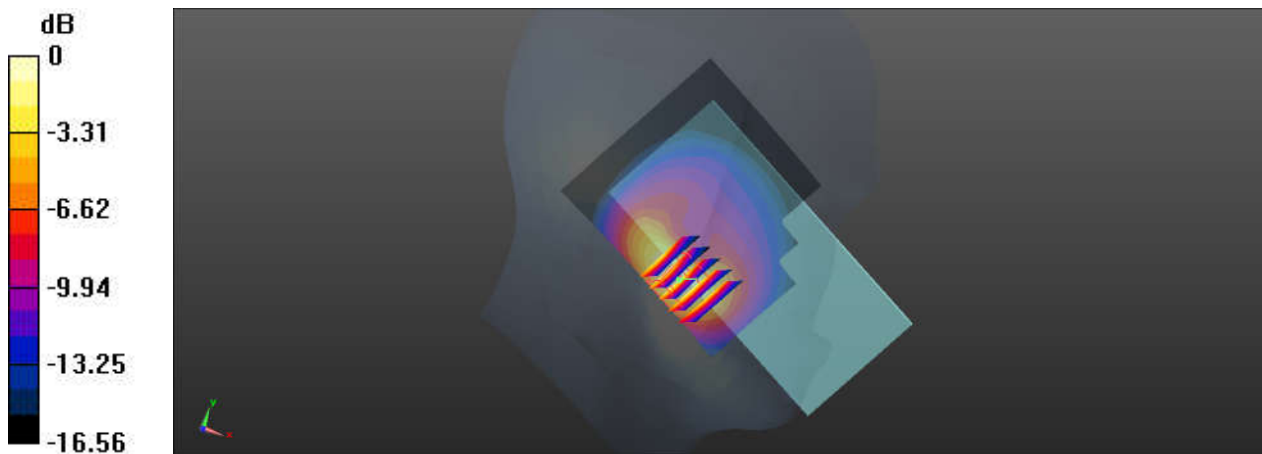
Communication System: UID 0, 5GNR (0); Frequency: 836.5 MHz; Duty Cycle: 1:1
Medium: HSL_835_200715 Medium parameters used: $f = 836.5$ MHz; $\sigma = 0.917$ S/m; $\epsilon_r = 41.516$;
 $\rho = 1000$ kg/m³
Ambient Temperature : 23.3 °C; Liquid Temperature : 22.4 °C

DASY5 Configuration:

- Probe: EX3DV4 - SN3819; ConvF(9.39, 9.39, 9.39); Calibrated: 2020/4/30
- Sensor-Surface: 2mm (Mechanical Surface Detection)
- Electronics: DAE3 Sn528; Calibrated: 2020/3/16
- Phantom: SAM (30deg probe tilt) with CRP v4.0; Type: QD000P40CC; Serial: TP:1500
- Measurement SW: DASY52, Version 52.10 (3); SEMCAD X Version 14.6.13 (7474)

Ch167300/Area Scan (71x81x1): Interpolated grid: dx=1.500 mm, dy=1.500 mm
Maximum value of SAR (interpolated) = 1.35 W/kg

Ch167300/Zoom Scan (5x5x7)/Cube 0: Measurement grid: dx=8mm, dy=8mm, dz=5mm
Reference Value = 8.707 V/m; Power Drift = -0.04 dB
Peak SAR (extrapolated) = 1.81 W/kg
SAR(1 g) = 0.869 W/kg; SAR(10 g) = 0.442 W/kg
Maximum value of SAR (measured) = 1.34 W/kg



0 dB = 1.34 W/kg

28_Bluetooth_DH5 1Mbps_Left Cheek_Ch39

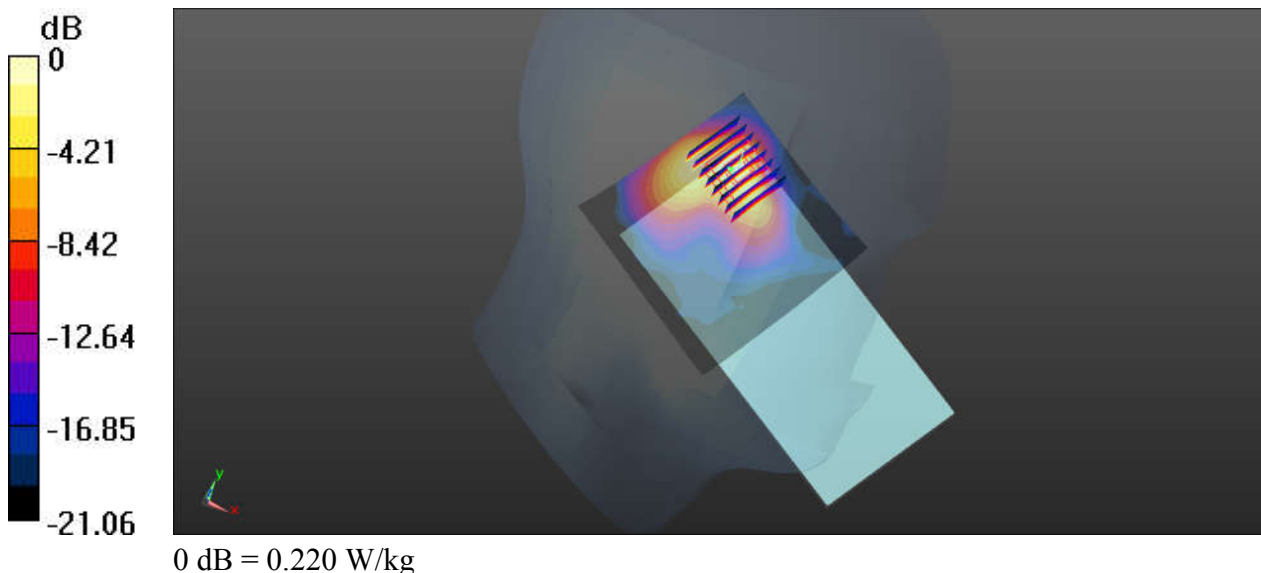
Communication System: UID 0, Bluetooth (0); Frequency: 2441 MHz; Duty Cycle: 1:1.3
Medium: HSL_2450_200729 Medium parameters used: $f = 2441 \text{ MHz}$; $\sigma = 1.81 \text{ S/m}$; $\epsilon_r = 39.784$; $\rho = 1000 \text{ kg/m}^3$
Ambient Temperature : $23.7 \text{ }^\circ\text{C}$; Liquid Temperature : $22.4 \text{ }^\circ\text{C}$

DASY5 Configuration:

- Probe: EX3DV4 - SN7576; ConvF(7.76, 7.76, 7.76); Calibrated: 2020.01.22;
- Sensor-Surface: 2mm (Mechanical Surface Detection)
- Electronics: DAE3 Sn528; Calibrated: 2020.03.16
- Phantom: SAM (Front) with CRP v5.0; Type: QD000P40CD; Serial: TP:1795
- Measurement SW: DASY52, Version 52.8 (8); SEMCAD X Version 14.6.10 (7331)

Ch39/Area Scan (81x81x1): Interpolated grid: $dx=1.200 \text{ mm}$, $dy=1.200 \text{ mm}$
Maximum value of SAR (interpolated) = 0.236 W/kg

Ch39/Zoom Scan (7x8x7)/Cube 0: Measurement grid: $dx=5\text{mm}$, $dy=5\text{mm}$, $dz=5\text{mm}$
Reference Value = 7.685 V/m ; Power Drift = -0.11 dB
Peak SAR (extrapolated) = 0.325 W/kg
SAR(1 g) = 0.149 W/kg ; SAR(10 g) = 0.056 W/kg
Maximum value of SAR (measured) = 0.220 W/kg



29_WLAN2.4GHz_802.11b 1Mbps_Left Cheek_Ch6

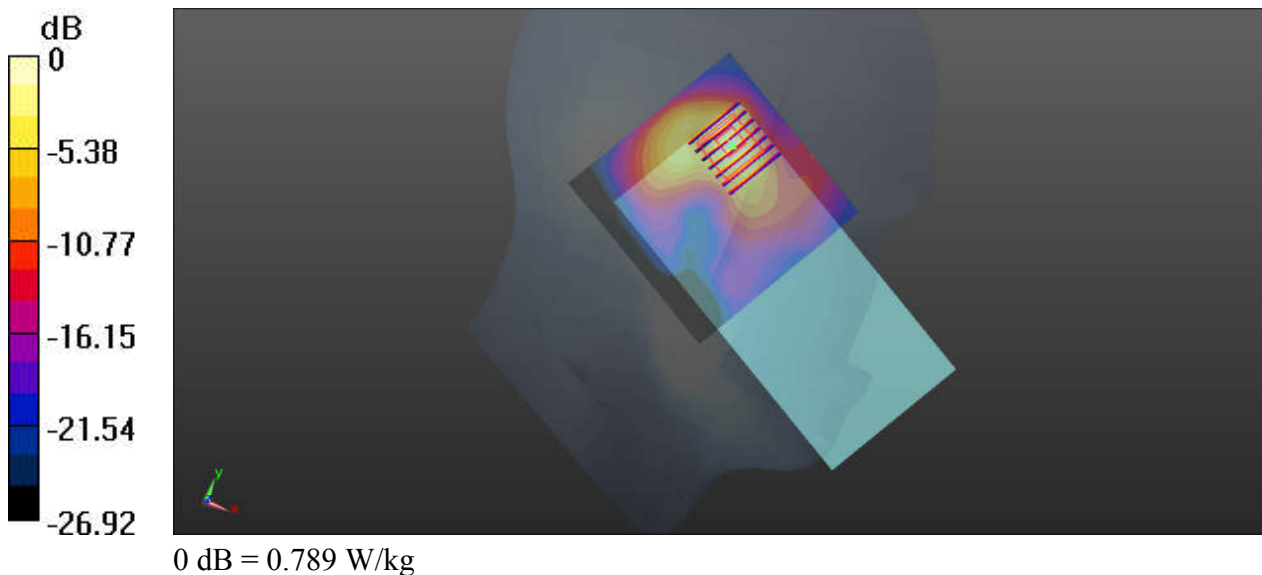
Communication System: UID 0, WIFI (0); Frequency: 2437 MHz; Duty Cycle: 1:1.017
Medium: HSL_2450_200713 Medium parameters used: $f = 2437$ MHz; $\sigma = 1.851$ S/m; $\epsilon_r = 37.563$;
 $\rho = 1000$ kg/m³
Ambient Temperature : 23.4 °C; Liquid Temperature : 22.5 °C

DASY5 Configuration:

- Probe: EX3DV4 - SN7576; ConvF(7.76, 7.76, 7.76); Calibrated: 2020.01.22;
- Sensor-Surface: 2mm (Mechanical Surface Detection)
- Electronics: DAE3 Sn528; Calibrated: 2020.03.16
- Phantom: SAM (Front) with CRP v5.0; Type: QD000P40CD; Serial: TP:1795
- Measurement SW: DASY52, Version 52.8 (8); SEMCAD X Version 14.6.10 (7331)

Ch6/Area Scan (81x81x1): Interpolated grid: dx=1.200 mm, dy=1.200 mm
Maximum value of SAR (interpolated) = 0.752 W/kg

Ch6/Zoom Scan (7x7x7)/Cube 0: Measurement grid: dx=5mm, dy=5mm, dz=5mm
Reference Value = 12.10 V/m; Power Drift = -0.17 dB
Peak SAR (extrapolated) = 1.08 W/kg
SAR(1 g) = 0.509 W/kg; SAR(10 g) = 0.190 W/kg
Maximum value of SAR (measured) = 0.789 W/kg



30_WLAN5GHz_802.11a_6Mbps_Left Cheek_Ch60

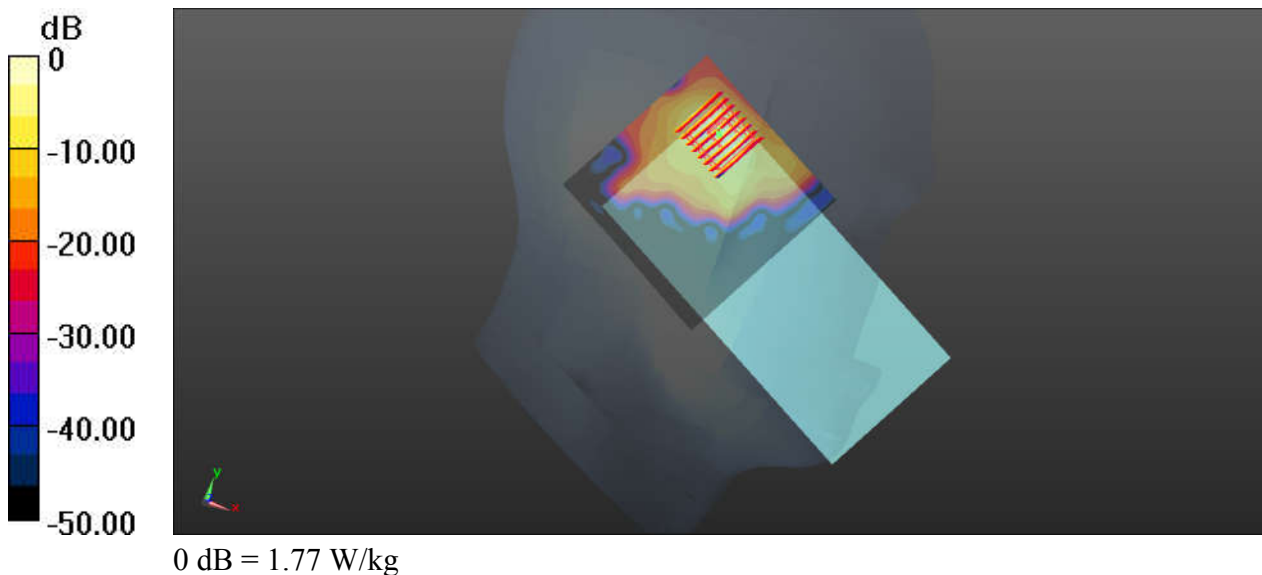
Communication System: UID 0, WIFI (0); Frequency: 5300 MHz; Duty Cycle: 1:1.014
Medium: HSL_5250_200715 Medium parameters used: $f = 5300$ MHz; $\sigma = 4.679$ S/m; $\epsilon_r = 36.159$;
 $\rho = 1000$ kg/m³
Ambient Temperature : 23.5 °C ; Liquid Temperature : 22.6 °C

DASY5 Configuration:

- Probe: EX3DV4 - SN7576; ConvF(5.2, 5.2, 5.2); Calibrated: 2020.01.22;
- Sensor-Surface: 1.4mm (Mechanical Surface Detection)
- Electronics: DAE3 Sn528; Calibrated: 2020.03.16
- Phantom: SAM (Front) with CRP v5.0; Type: QD000P40CD; Serial: TP:1795
- Measurement SW: DASY52, Version 52.8 (8); SEMCAD X Version 14.6.10 (7331)

Ch60/Area Scan (91x91x1): Interpolated grid: dx=1.000 mm, dy=1.000 mm
Maximum value of SAR (interpolated) = 1.56 W/kg

Ch60/Zoom Scan (8x8x7)/Cube 0: Measurement grid: dx=4mm, dy=4mm, dz=1.4mm
Reference Value = 4.264 V/m; Power Drift = -0.09 dB
Peak SAR (extrapolated) = 3.21 W/kg
SAR(1 g) = 0.557 W/kg; SAR(10 g) = 0.159 W/kg
Maximum value of SAR (measured) = 1.77 W/kg



31_WLAN5GHz_802.11n-HT40 MCS0_Left Cheek_Ch134

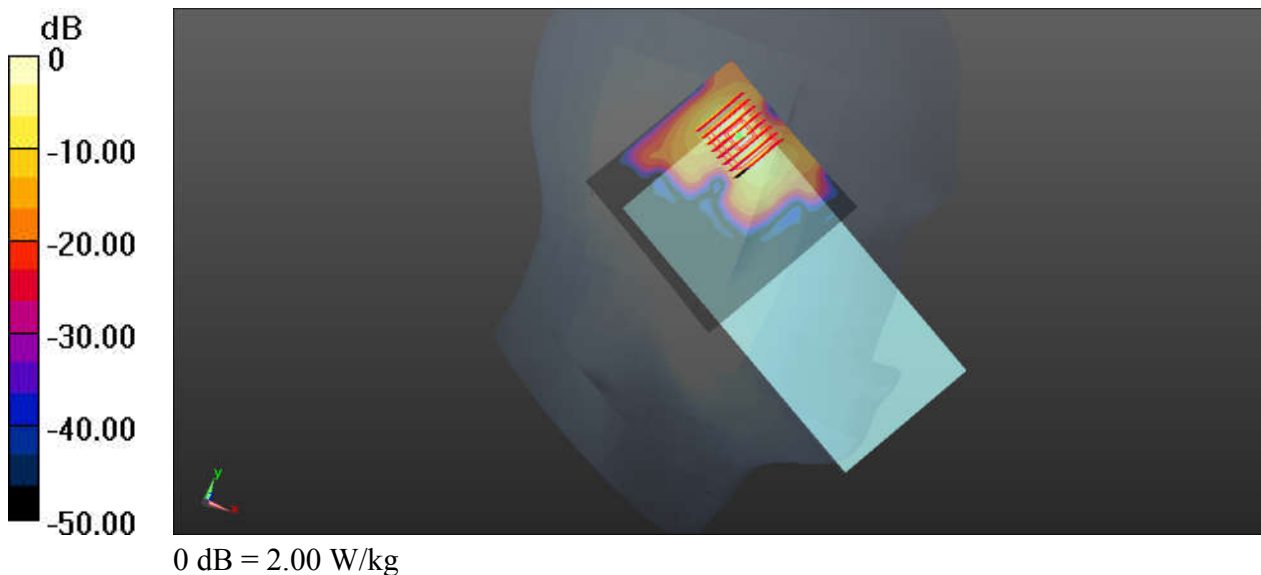
Communication System: UID 0, WIFI (0); Frequency: 5670 MHz; Duty Cycle: 1:1
Medium: HSL_5600_200717 Medium parameters used: $f = 5670$ MHz; $\sigma = 5.04$ S/m; $\epsilon_r = 35.692$; $\rho = 1000$ kg/m³
Ambient Temperature : 23.6 °C; Liquid Temperature : 22.6 °C

DASY5 Configuration:

- Probe: EX3DV4 - SN7576; ConvF(4.62, 4.62, 4.62); Calibrated: 2020.01.22;
- Sensor-Surface: 1.4mm (Mechanical Surface Detection)
- Electronics: DAE3 Sn528; Calibrated: 2020.03.16
- Phantom: SAM (Front) with CRP v5.0; Type: QD000P40CD; Serial: TP:1795
- Measurement SW: DASY52, Version 52.8 (8); SEMCAD X Version 14.6.10 (7331)

Ch134/Area Scan (91x91x1): Interpolated grid: dx=1.000 mm, dy=1.000 mm
Maximum value of SAR (interpolated) = 1.91 W/kg

Ch134/Zoom Scan (8x8x7)/Cube 0: Measurement grid: dx=4mm, dy=4mm, dz=1.4mm
Reference Value = 3.647 V/m; Power Drift = -0.09 dB
Peak SAR (extrapolated) = 3.80 W/kg
SAR(1 g) = 0.594 W/kg; SAR(10 g) = 0.143 W/kg
Maximum value of SAR (measured) = 2.00 W/kg



32_WLAN5GHz_802.11n-HT40 MCS0_Left Cheek_Ch159

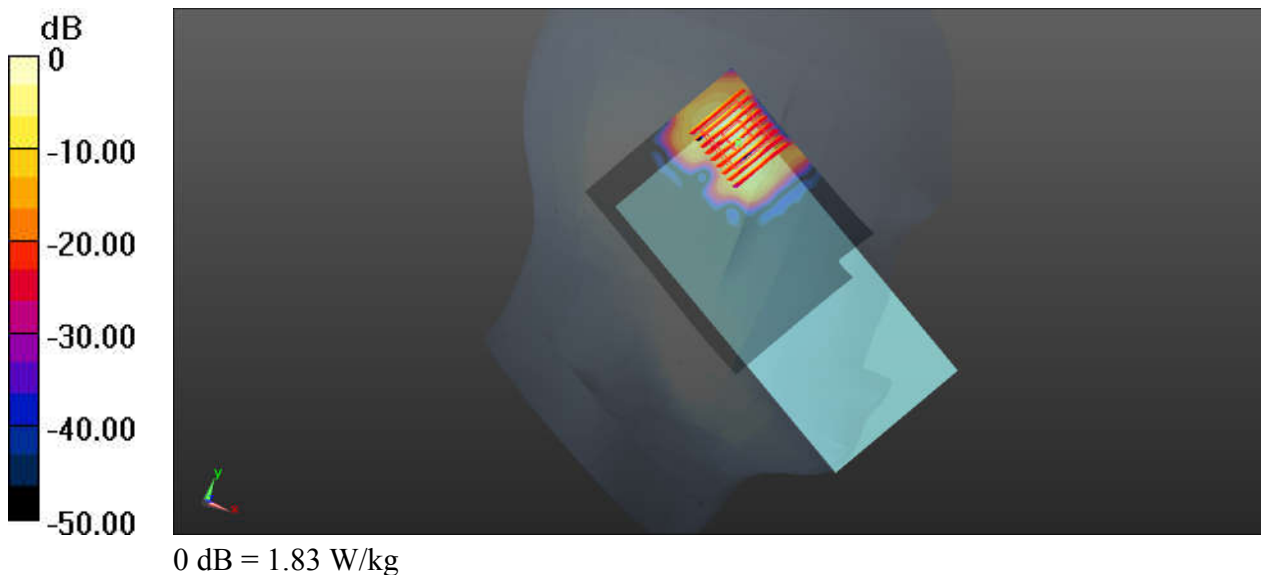
Communication System: UID 0, WIFI (0); Frequency: 5795 MHz; Duty Cycle: 1:1
Medium: HSL_5750_200719 Medium parameters used: $f = 5795$ MHz; $\sigma = 5.065$ S/m; $\epsilon_r = 36.517$;
 $\rho = 1000$ kg/m³
Ambient Temperature : 23.6 °C; Liquid Temperature : 22.7 °C

DASY5 Configuration:

- Probe: EX3DV4 - SN7576; ConvF(4.83, 4.83, 4.83); Calibrated: 2020.01.22;
- Sensor-Surface: 1.4mm (Mechanical Surface Detection)
- Electronics: DAE3 Sn528; Calibrated: 2020.03.16
- Phantom: SAM (Front) with CRP v5.0; Type: QD000P40CD; Serial: TP:1795
- Measurement SW: DASY52, Version 52.8 (8); SEMCAD X Version 14.6.10 (7331)

Ch159/Area Scan (91x111x1): Interpolated grid: dx=1.000 mm, dy=1.000 mm
Maximum value of SAR (interpolated) = 1.27 W/kg

Ch159/Zoom Scan (9x9x7)/Cube 0: Measurement grid: dx=4mm, dy=4mm, dz=1.4mm
Reference Value = 4.791 V/m; Power Drift = -0.14 dB
Peak SAR (extrapolated) = 3.86 W/kg
SAR(1 g) = 0.589 W/kg; SAR(10 g) = 0.140 W/kg
Maximum value of SAR (measured) = 1.83 W/kg



33_GSM850_GPRS(3 Tx slots)_Left Side_10mm_Ch128

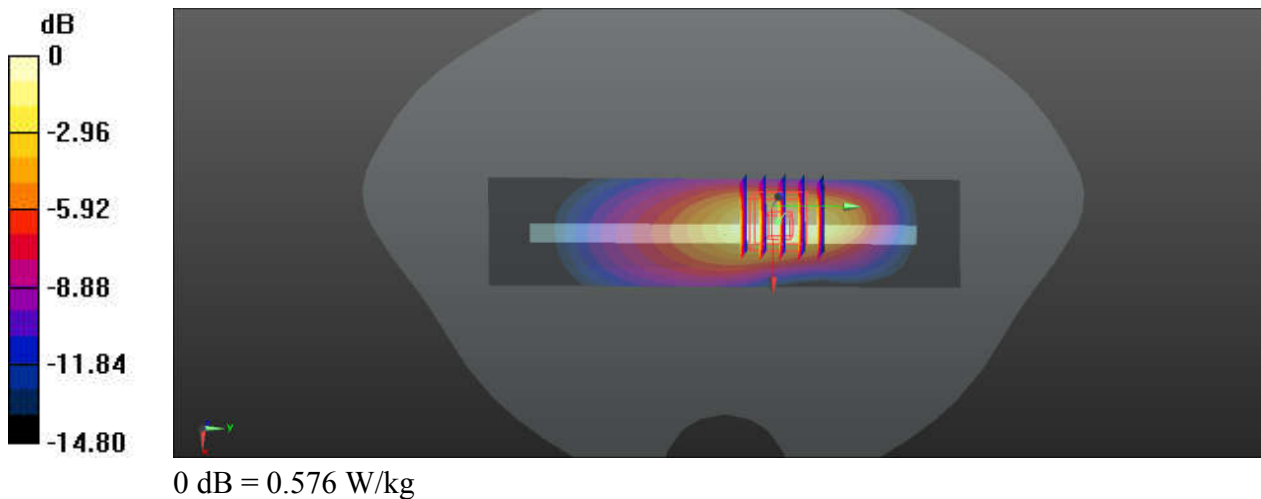
Communication System: UID 0, GPRS/EDGE11 (0); Frequency: 824.2 MHz; Duty Cycle: 1:2.77
Medium: HSL_835_200730 Medium parameters used: $f = 824.2$ MHz; $\sigma = 0.916$ S/m; $\epsilon_r = 42.816$;
 $\rho = 1000$ kg/m³
Ambient Temperature : 23.6 °C; Liquid Temperature : 22.6 °C

DASY5 Configuration:

- Probe: EX3DV4 - SN3819; ConvF(9.39, 9.39, 9.39); Calibrated: 2020/4/30
- Sensor-Surface: 2mm (Mechanical Surface Detection)
- Electronics: DAE4 Sn1226; Calibrated: 2020/5/15
- Phantom: SAM (30deg probe tilt) with CRP v4.0; Type: QD000P40CC; Serial: TP:1500
- Measurement SW: DASY52, Version 52.10 (3); SEMCAD X Version 14.6.13 (7474)

Ch128/Area Scan (31x131x1): Interpolated grid: dx=1.500 mm, dy=1.500 mm
Maximum value of SAR (interpolated) = 0.578 W/kg

Ch128/Zoom Scan (5x5x7)/Cube 0: Measurement grid: dx=8mm, dy=8mm, dz=5mm
Reference Value = 20.16 V/m; Power Drift = -0.07 dB
Peak SAR (extrapolated) = 0.756 W/kg
SAR(1 g) = 0.408 W/kg; SAR(10 g) = 0.218 W/kg
Maximum value of SAR (measured) = 0.576 W/kg



34_GSM1900_GPRS(3 Tx slots)_Bottom Side_10mm_Ch661

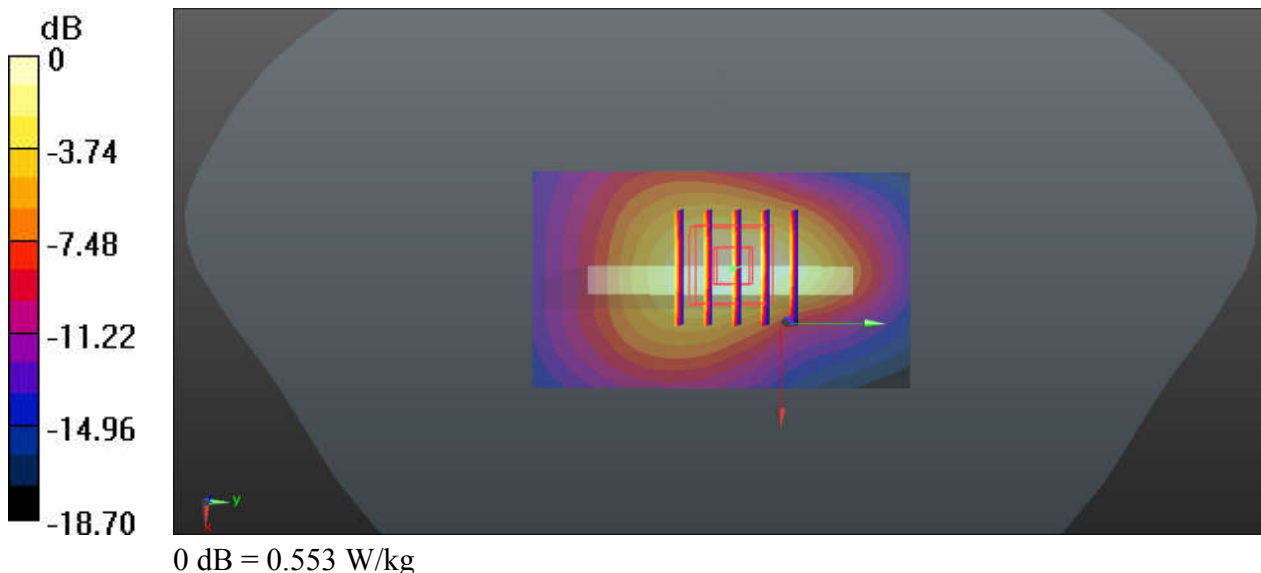
Communication System: UID 0, GPRS/EDGE11 (0); Frequency: 1880 MHz; Duty Cycle: 1:2.77
Medium: HSL_1900_200805 Medium parameters used: $f = 1880$ MHz; $\sigma = 1.408$ S/m; $\epsilon_r = 41.203$;
 $\rho = 1000$ kg/m³
Ambient Temperature : 23.5 °C; Liquid Temperature : 22.7 °C

DASY5 Configuration:

- Probe: EX3DV4 - SN7576; ConvF(8.58, 8.58, 8.58); Calibrated: 2020.01.22;
- Sensor-Surface: 2mm (Mechanical Surface Detection)
- Electronics: DAE3 Sn528; Calibrated: 2020.03.16
- Phantom: SAM (Front) with CRP v5.0; Type: QD000P40CD; Serial: TP:1795
- Measurement SW: DASY52, Version 52.8 (8); SEMCAD X Version 14.6.10 (7331)

Ch661/Area Scan (41x71x1): Interpolated grid: dx=1.500 mm, dy=1.500 mm
Maximum value of SAR (interpolated) = 0.541 W/kg

Ch661/Zoom Scan (5x5x7)/Cube 0: Measurement grid: dx=8mm, dy=8mm, dz=5mm
Reference Value = 18.78 V/m; Power Drift = 0.03 dB
Peak SAR (extrapolated) = 0.680 W/kg
SAR(1 g) = 0.394 W/kg; SAR(10 g) = 0.216 W/kg
Maximum value of SAR (measured) = 0.553 W/kg



35_WCDMA V_RMC 12.2Kbps_Back_10mm_Ch4132

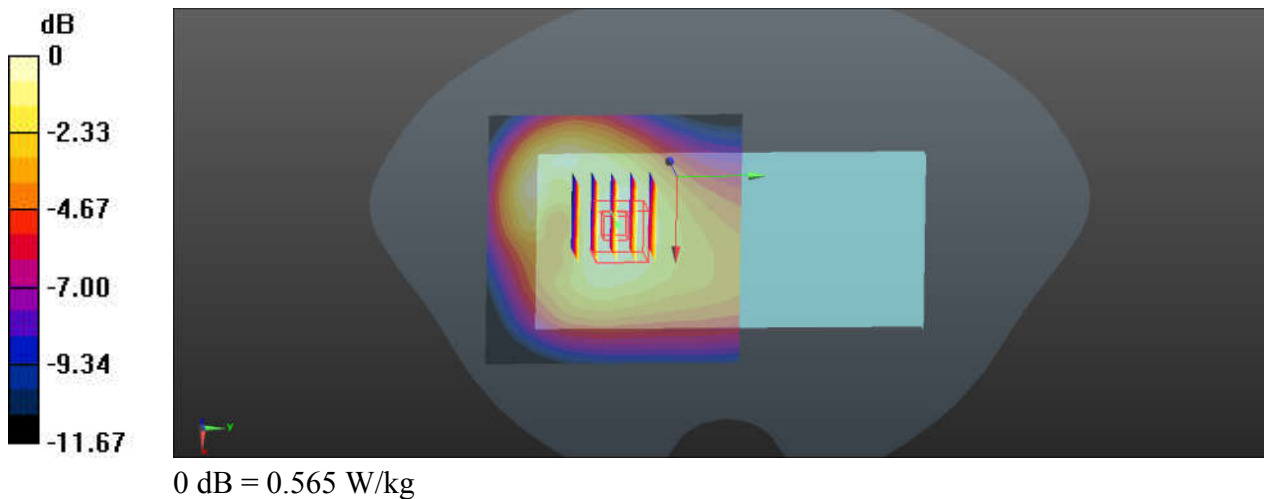
Communication System: UID 0, Generic WCDMA (0); Frequency: 826.4 MHz; Duty Cycle: 1:1
Medium: HSL_835_200715 Medium parameters used: $f = 826.5$ MHz; $\sigma = 0.908$ S/m; $\epsilon_r = 41.609$;
 $\rho = 1000$ kg/m³
Ambient Temperature : 23.3 °C; Liquid Temperature : 22.4 °C

DASY5 Configuration:

- Probe: EX3DV4 - SN3819; ConvF(9.39, 9.39, 9.39); Calibrated: 2020/4/30
- Sensor-Surface: 2mm (Mechanical Surface Detection)
- Electronics: DAE3 Sn528; Calibrated: 2020/3/16
- Phantom: SAM (30deg probe tilt) with CRP v4.0; Type: QD000P40CC; Serial: TP:1500
- Measurement SW: DASY52, Version 52.10 (3); SEMCAD X Version 14.6.13 (7474)

Ch4132/Area Scan (71x71x1): Interpolated grid: dx=1.500 mm, dy=1.500 mm
Maximum value of SAR (interpolated) = 0.548 W/kg

Ch4132/Zoom Scan (5x5x7)/Cube 0: Measurement grid: dx=8mm, dy=8mm, dz=5mm
Reference Value = 16.82 V/m; Power Drift = -0.03 dB
Peak SAR (extrapolated) = 0.638 W/kg
SAR(1 g) = 0.464 W/kg; SAR(10 g) = 0.339 W/kg
Maximum value of SAR (measured) = 0.565 W/kg



36_WCDMA IV_LAT_RMC 12.2Kbps_Bottom Side_10mm_Ch1312

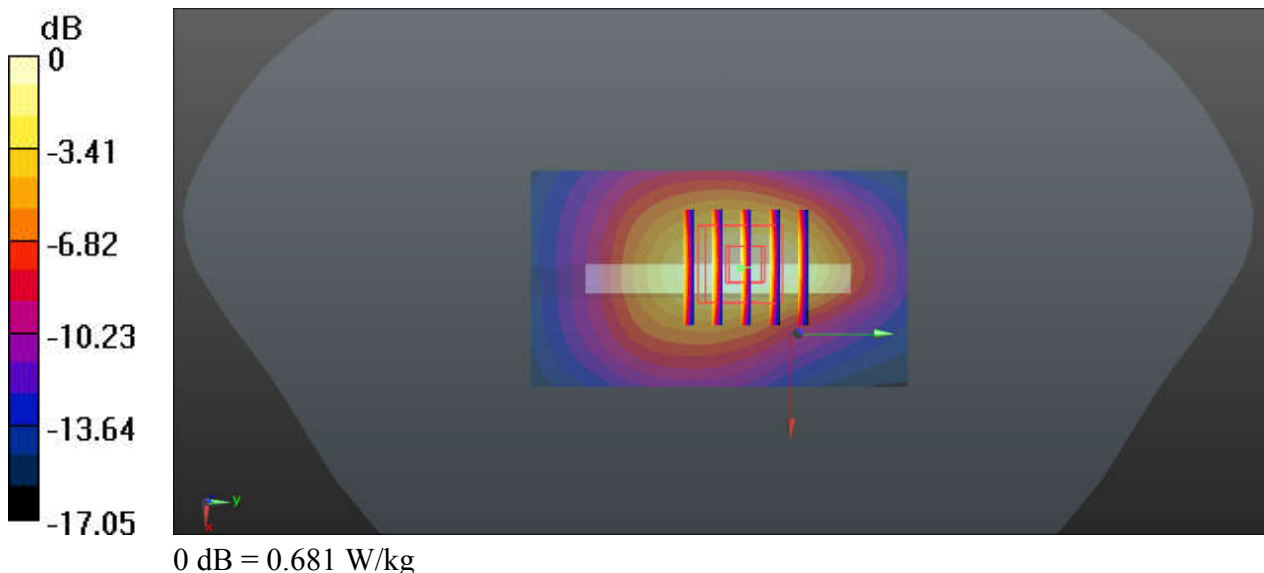
Communication System: UID 0, UMTS (0); Frequency: 1712.4 MHz; Duty Cycle: 1:1
Medium: HSL_1750_200807 Medium parameters used: $f = 1712.4$ MHz; $\sigma = 1.36$ S/m; $\epsilon_r = 41.596$;
 $\rho = 1000$ kg/m³
Ambient Temperature : 23.4 °C ; Liquid Temperature : 22.7 °C

DASY5 Configuration:

- Probe: EX3DV4 - SN7576; ConvF(8.88, 8.88, 8.88); Calibrated: 2020.01.22;
- Sensor-Surface: 2mm (Mechanical Surface Detection)
- Electronics: DAE3 Sn528; Calibrated: 2020.03.16
- Phantom: SAM (Front) with CRP v5.0; Type: QD000P40CD; Serial: TP:1795
- Measurement SW: DASY52, Version 52.8 (8); SEMCAD X Version 14.6.10 (7331)

Ch1312/Area Scan (41x71x1): Interpolated grid: dx=1.500 mm, dy=1.500 mm
Maximum value of SAR (interpolated) = 0.675 W/kg

Ch1312/Zoom Scan (5x5x7)/Cube 0: Measurement grid: dx=8mm, dy=8mm, dz=5mm
Reference Value = 21.12 V/m; Power Drift = 0.02 dB
Peak SAR (extrapolated) = 0.831 W/kg
SAR(1 g) = 0.496 W/kg; SAR(10 g) = 0.274 W/kg
Maximum value of SAR (measured) = 0.681 W/kg



37_WCDMA II_LAT_RMC 12.2Kbps_Bottom Side_10mm_Ch9538

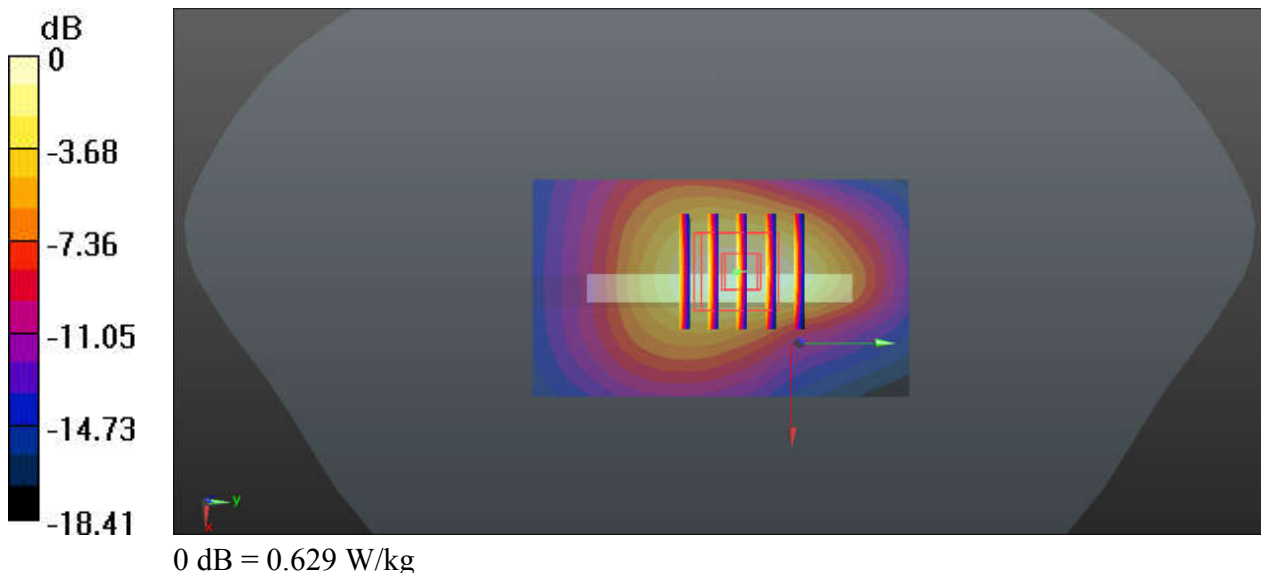
Communication System: UID 0, UMTS (0); Frequency: 1907.6 MHz; Duty Cycle: 1:1
Medium: HSL_1900_200805 Medium parameters used: $f = 1908$ MHz; $\sigma = 1.426$ S/m; $\epsilon_r = 41.113$;
 $\rho = 1000$ kg/m³
Ambient Temperature : 23.5 °C; Liquid Temperature : 22.7 °C

DASY5 Configuration:

- Probe: EX3DV4 - SN7576; ConvF(8.58, 8.58, 8.58); Calibrated: 2020.01.22;
- Sensor-Surface: 2mm (Mechanical Surface Detection)
- Electronics: DAE3 Sn528; Calibrated: 2020.03.16
- Phantom: SAM (Front) with CRP v5.0; Type: QD000P40CD; Serial: TP:1795
- Measurement SW: DASY52, Version 52.8 (8); SEMCAD X Version 14.6.10 (7331)

Ch9538/Area Scan (41x71x1): Interpolated grid: dx=1.500 mm, dy=1.500 mm
Maximum value of SAR (interpolated) = 0.630 W/kg

Ch9538/Zoom Scan (5x5x7)/Cube 0: Measurement grid: dx=8mm, dy=8mm, dz=5mm
Reference Value = 19.85 V/m; Power Drift = 0.19 dB
Peak SAR (extrapolated) = 0.792 W/kg
SAR(1 g) = 0.447 W/kg; SAR(10 g) = 0.241 W/kg
Maximum value of SAR (measured) = 0.629 W/kg



38_CDMA2000 BC0_RTAP 153.6Kbps_Left Side_10mm_Ch1013

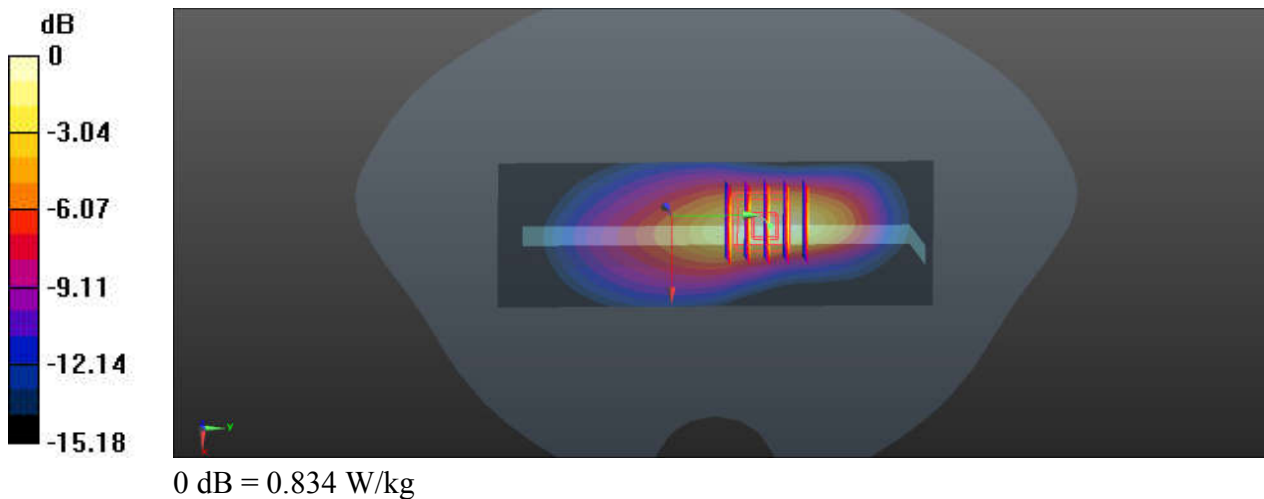
Communication System: UID 0, Generic CDMA (0); Frequency: 824.7 MHz; Duty Cycle: 1:1
Medium: HSL_835_200730 Medium parameters used: $f = 825$ MHz; $\sigma = 0.917$ S/m; $\epsilon_r = 42.805$; $\rho = 1000$ kg/m³
Ambient Temperature : 23.6 °C; Liquid Temperature : 22.6 °C

DASY5 Configuration:

- Probe: EX3DV4 - SN3819; ConvF(9.39, 9.39, 9.39); Calibrated: 2020/4/30
- Sensor-Surface: 2mm (Mechanical Surface Detection)
- Electronics: DAE4 Sn1226; Calibrated: 2020/5/15
- Phantom: SAM (30deg probe tilt) with CRP v4.0; Type: QD000P40CC; Serial: TP:1500
- Measurement SW: DASY52, Version 52.10 (3); SEMCAD X Version 14.6.13 (7474)

Ch1013/Area Scan (41x121x1): Interpolated grid: dx=1.500 mm, dy=1.500 mm
Maximum value of SAR (interpolated) = 0.814 W/kg

Ch1013/Zoom Scan (5x5x7)/Cube 0: Measurement grid: dx=8mm, dy=8mm, dz=5mm
Reference Value = 23.68 V/m; Power Drift = 0.03 dB
Peak SAR (extrapolated) = 1.07 W/kg
SAR(1 g) = 0.577 W/kg; SAR(10 g) = 0.315 W/kg
Maximum value of SAR (measured) = 0.834 W/kg



39_CDMA2000 BC10_RTAP 153.6Kbps_Left Side_10mm_Ch580

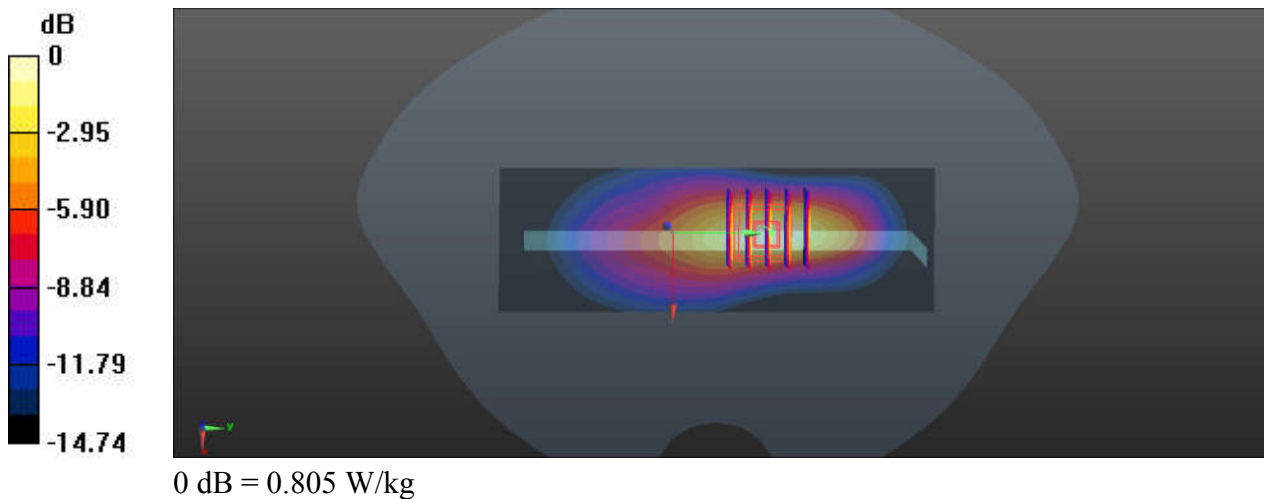
Communication System: UID 0, Generic CDMA (0); Frequency: 820.5 MHz; Duty Cycle: 1:1
Medium: HSL_835_200730 Medium parameters used: $f = 820.5$ MHz; $\sigma = 0.913$ S/m; $\epsilon_r = 42.867$;
 $\rho = 1000$ kg/m³
Ambient Temperature : 23.6 °C; Liquid Temperature : 22.6 °C

DASY5 Configuration:

- Probe: EX3DV4 - SN3819; ConvF(9.39, 9.39, 9.39); Calibrated: 2020/4/30
- Sensor-Surface: 2mm (Mechanical Surface Detection)
- Electronics: DAE4 Sn1226; Calibrated: 2020/5/15
- Phantom: SAM (30deg probe tilt) with CRP v4.0; Type: QD000P40CC; Serial: TP:1500
- Measurement SW: DASY52, Version 52.10 (3); SEMCAD X Version 14.6.13 (7474)

Ch580/Area Scan (41x121x1): Interpolated grid: dx=1.500 mm, dy=1.500 mm
Maximum value of SAR (interpolated) = 0.789 W/kg

Ch580/Zoom Scan (5x5x7)/Cube 0: Measurement grid: dx=8mm, dy=8mm, dz=5mm
Reference Value = 23.46 V/m; Power Drift = 0.02 dB
Peak SAR (extrapolated) = 1.03 W/kg
SAR(1 g) = 0.564 W/kg; SAR(10 g) = 0.307 W/kg
Maximum value of SAR (measured) = 0.805 W/kg



40_CDMA2000 BC1_RTAP 153.6Kbps_Bottom Side_10mm_Ch1175

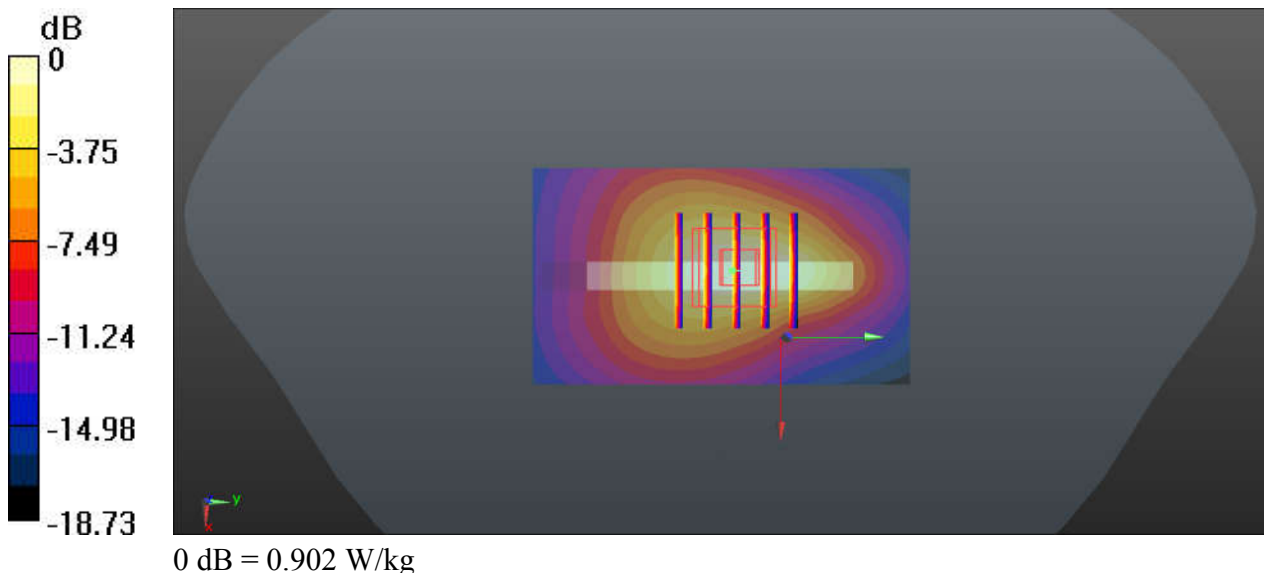
Communication System: UID 0, CDMA2000 (0); Frequency: 1908.75 MHz; Duty Cycle: 1:1
Medium: HSL_1900_200805 Medium parameters used: $f = 1909$ MHz; $\sigma = 1.426$ S/m; $\epsilon_r = 41.109$;
 $\rho = 1000$ kg/m³
Ambient Temperature : 23.5 °C; Liquid Temperature : 22.7 °C

DASY5 Configuration:

- Probe: EX3DV4 - SN7576; ConvF(8.58, 8.58, 8.58); Calibrated: 2020.01.22;
- Sensor-Surface: 2mm (Mechanical Surface Detection)
- Electronics: DAE3 Sn528; Calibrated: 2020.03.16
- Phantom: SAM (Front) with CRP v5.0; Type: QD000P40CD; Serial: TP:1795
- Measurement SW: DASY52, Version 52.8 (8); SEMCAD X Version 14.6.10 (7331)

Ch1175/Area Scan (41x71x1): Interpolated grid: dx=1.500 mm, dy=1.500 mm
Maximum value of SAR (interpolated) = 0.932 W/kg

Ch1175/Zoom Scan (5x5x7)/Cube 0: Measurement grid: dx=8mm, dy=8mm, dz=5mm
Reference Value = 3.663 V/m; Power Drift = 0.05 dB
Peak SAR (extrapolated) = 1.14 W/kg
SAR(1 g) = 0.642 W/kg; SAR(10 g) = 0.346 W/kg
Maximum value of SAR (measured) = 0.902 W/kg



41_LTE Band 71_20M_QPSK_50_24_Left Side_10mm_Ch133322

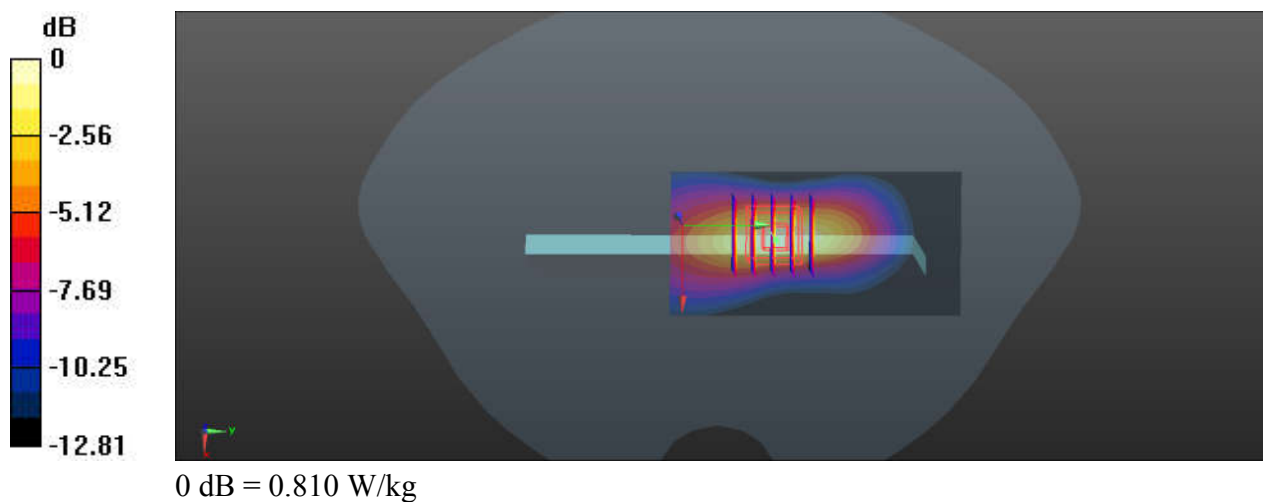
Communication System: UID 0, Generic LTE (0); Frequency: 683 MHz; Duty Cycle: 1:1
Medium: HSL_750_200730 Medium parameters used: $f = 683 \text{ MHz}$; $\sigma = 0.852 \text{ S/m}$; $\epsilon_r = 42.345$; $\rho = 1000 \text{ kg/m}^3$
Ambient Temperature : $23.2 \text{ }^\circ\text{C}$; Liquid Temperature : $22.4 \text{ }^\circ\text{C}$

DASY5 Configuration:

- Probe: EX3DV4 - SN3819; ConvF(9.64, 9.64, 9.64); Calibrated: 2020/4/30
- Sensor-Surface: 2mm (Mechanical Surface Detection)
- Electronics: DAE4 Sn1226; Calibrated: 2020/5/15
- Phantom: SAM (30deg probe tilt) with CRP v4.0; Type: QD000P40CC; Serial: TP:1500
- Measurement SW: DASY52, Version 52.10 (3); SEMCAD X Version 14.6.13 (7474)

Ch133322/Area Scan (41x81x1): Interpolated grid: $dx=1.500 \text{ mm}$, $dy=1.500 \text{ mm}$
Maximum value of SAR (interpolated) = 0.805 W/kg

Ch133322/Zoom Scan (5x5x7)/Cube 0: Measurement grid: $dx=8\text{mm}$, $dy=8\text{mm}$, $dz=5\text{mm}$
Reference Value = 3.783 V/m ; Power Drift = 0.02 dB
Peak SAR (extrapolated) = 1.01 W/kg
SAR(1 g) = 0.590 W/kg ; SAR(10 g) = 0.338 W/kg
Maximum value of SAR (measured) = 0.810 W/kg



42_LTE Band 12_10M_QPSK_25_25_Left Side_10mm_Ch23095

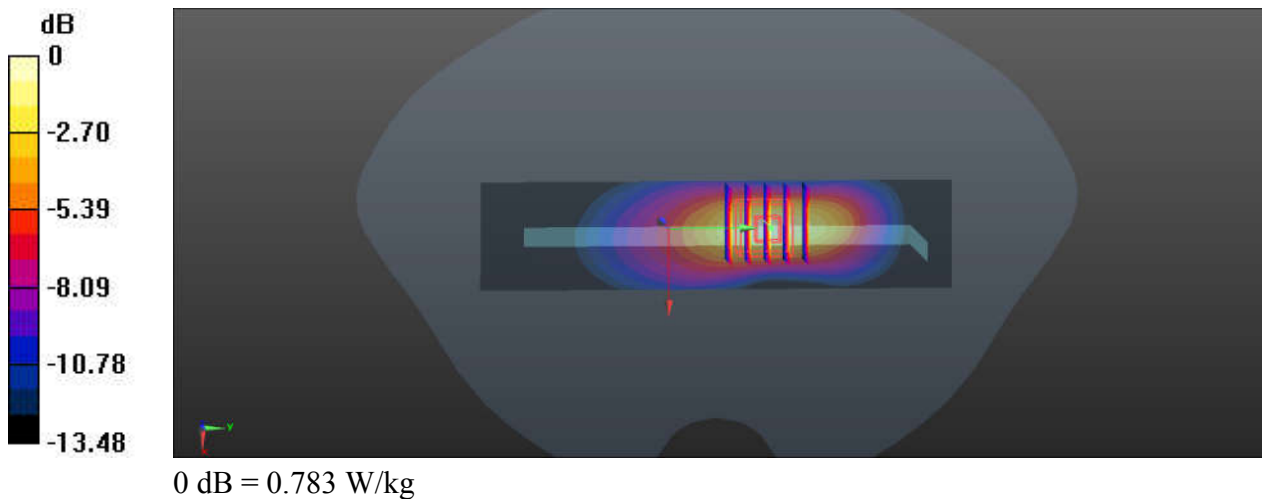
Communication System: UID 0, Generic LTE (0); Frequency: 707.5 MHz; Duty Cycle: 1:1
Medium: HSL_750_200730 Medium parameters used: $f = 707.5$ MHz; $\sigma = 0.872$ S/m; $\epsilon_r = 41.948$;
 $\rho = 1000$ kg/m³
Ambient Temperature : 23.2 °C; Liquid Temperature : 22.4 °C

DASY5 Configuration:

- Probe: EX3DV4 - SN3819; ConvF(9.64, 9.64, 9.64); Calibrated: 2020/4/30
- Sensor-Surface: 2mm (Mechanical Surface Detection)
- Electronics: DAE4 Sn1226; Calibrated: 2020/5/15
- Phantom: SAM (30deg probe tilt) with CRP v4.0; Type: QD000P40CC; Serial: TP:1500
- Measurement SW: DASY52, Version 52.10 (3); SEMCAD X Version 14.6.13 (7474)

Ch23095/Area Scan (31x131x1): Interpolated grid: dx=1.500 mm, dy=1.500 mm
Maximum value of SAR (interpolated) = 0.731 W/kg

Ch23095/Zoom Scan (5x5x7)/Cube 0: Measurement grid: dx=8mm, dy=8mm, dz=5mm
Reference Value = 23.01 V/m; Power Drift = 0.00 dB
Peak SAR (extrapolated) = 0.992 W/kg
SAR(1 g) = 0.556 W/kg; SAR(10 g) = 0.307 W/kg
Maximum value of SAR (measured) = 0.783 W/kg



43_LTE Band 13_10M_QPSK_25_25_Left Side_10mm_Ch23230

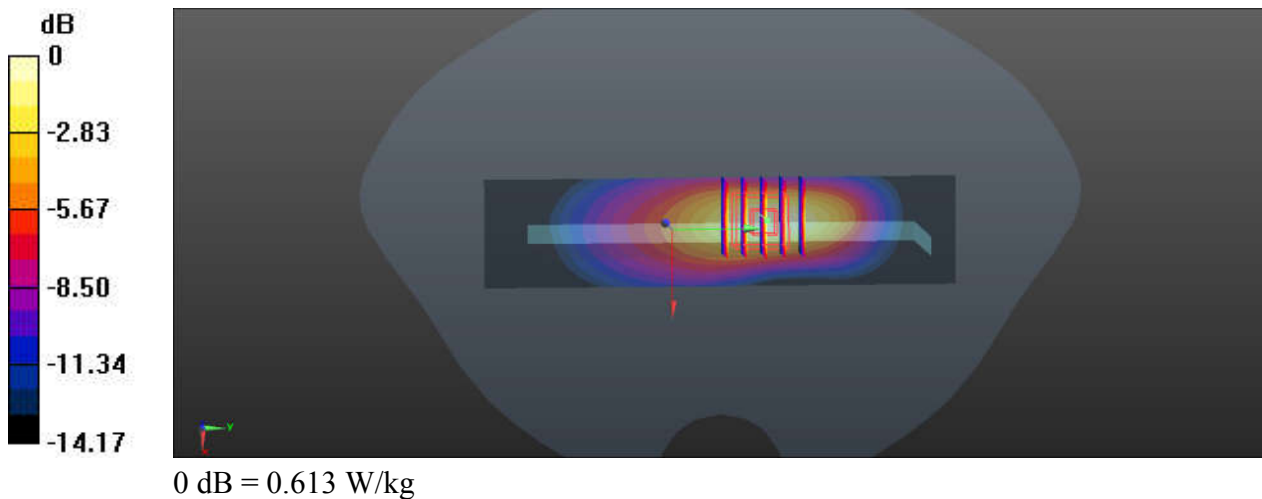
Communication System: UID 0, Generic LTE (0); Frequency: 782 MHz; Duty Cycle: 1:1
Medium: HSL_750_200730 Medium parameters used: $f = 782 \text{ MHz}$; $\sigma = 0.913 \text{ S/m}$; $\epsilon_r = 40.28$; $\rho = 1000 \text{ kg/m}^3$
Ambient Temperature : $23.2 \text{ }^\circ\text{C}$; Liquid Temperature : $22.4 \text{ }^\circ\text{C}$

DASY5 Configuration:

- Probe: EX3DV4 - SN3819; ConvF(9.64, 9.64, 9.64); Calibrated: 2020/4/30
- Sensor-Surface: 2mm (Mechanical Surface Detection)
- Electronics: DAE4 Sn1226; Calibrated: 2020/5/15
- Phantom: SAM (30deg probe tilt) with CRP v4.0; Type: QD000P40CC; Serial: TP:1500
- Measurement SW: DASY52, Version 52.10 (3); SEMCAD X Version 14.6.13 (7474)

Ch23230/Area Scan (31x131x1): Interpolated grid: $dx=1.500 \text{ mm}$, $dy=1.500 \text{ mm}$
Maximum value of SAR (interpolated) = 0.624 W/kg

Ch23230/Zoom Scan (5x5x7)/Cube 0: Measurement grid: $dx=8\text{mm}$, $dy=8\text{mm}$, $dz=5\text{mm}$
Reference Value = 21.63 V/m ; Power Drift = 0.05 dB
Peak SAR (extrapolated) = 0.803 W/kg
SAR(1 g) = 0.447 W/kg ; SAR(10 g) = 0.248 W/kg
Maximum value of SAR (measured) = 0.613 W/kg



44_LTE Band 5_10M_QPSK_1_0_Left Side_10mm_Ch20525

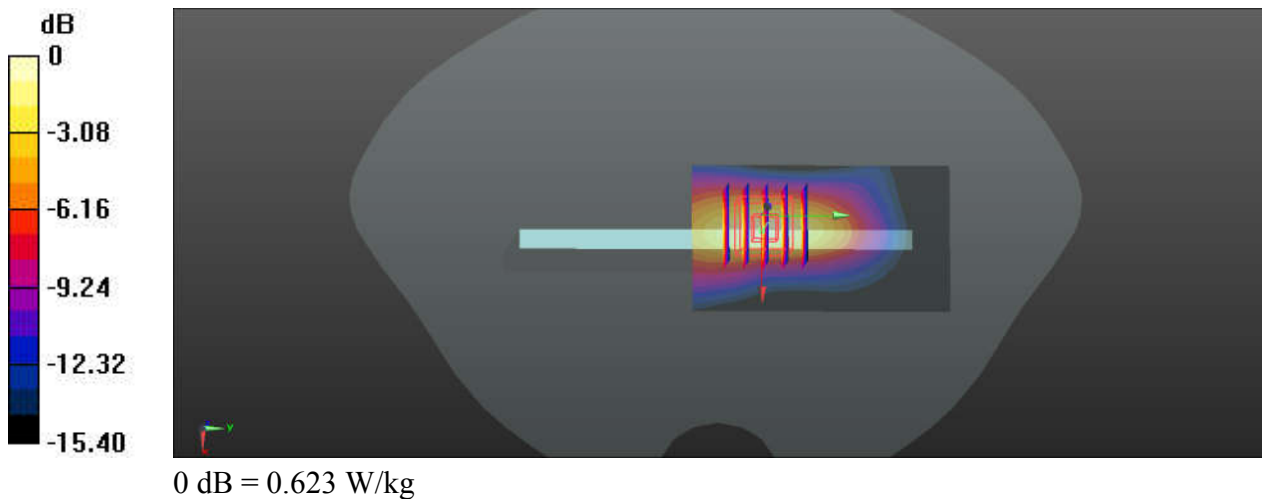
Communication System: UID 0, Generic LTE (0); Frequency: 836.5 MHz; Duty Cycle: 1:1
Medium: HSL_835_200730 Medium parameters used: $f = 836.5$ MHz; $\sigma = 0.928$ S/m; $\epsilon_r = 42.658$;
 $\rho = 1000$ kg/m³
Ambient Temperature : 23.6 °C ; Liquid Temperature : 22.6 °C

DASY5 Configuration:

- Probe: EX3DV4 - SN3819; ConvF(9.39, 9.39, 9.39); Calibrated: 2020/4/30
- Sensor-Surface: 2mm (Mechanical Surface Detection)
- Electronics: DAE4 Sn1226; Calibrated: 2020/5/15
- Phantom: SAM (30deg probe tilt) with CRP v4.0; Type: QD000P40CC; Serial: TP:1500
- Measurement SW: DASY52, Version 52.10 (3); SEMCAD X Version 14.6.13 (7474)

Ch20525/Area Scan (41x71x1): Interpolated grid: dx=1.500 mm, dy=1.500 mm
Maximum value of SAR (interpolated) = 0.607 W/kg

Ch20525/Zoom Scan (5x5x7)/Cube 0: Measurement grid: dx=8mm, dy=8mm, dz=5mm
Reference Value = 20.38 V/m; Power Drift = 0.07 dB
Peak SAR (extrapolated) = 0.804 W/kg
SAR(1 g) = 0.426 W/kg; SAR(10 g) = 0.225 W/kg
Maximum value of SAR (measured) = 0.623 W/kg



45_LTE Band 26_15M_QPSK_36_20_Left Side_10mm_Ch26765

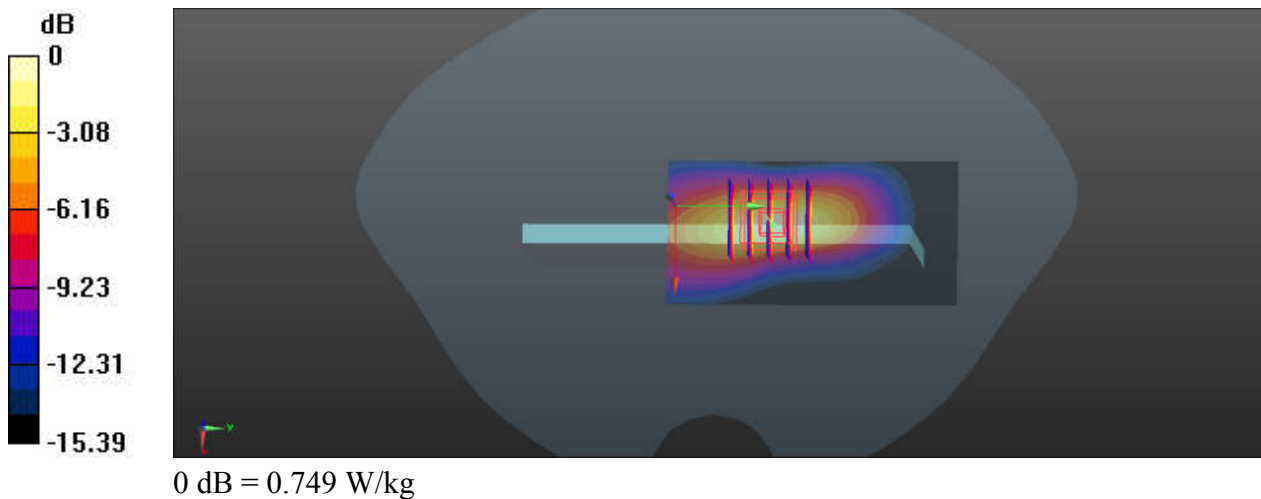
Communication System: UID 0, Generic LTE (0); Frequency: 821.5 MHz; Duty Cycle: 1:1
Medium: HSL_835_200730 Medium parameters used: $f = 821.5 \text{ MHz}$; $\sigma = 0.914 \text{ S/m}$; $\epsilon_r = 42.853$;
 $\rho = 1000 \text{ kg/m}^3$
Ambient Temperature : $23.6 \text{ }^\circ\text{C}$; Liquid Temperature : $22.6 \text{ }^\circ\text{C}$

DASY5 Configuration:

- Probe: EX3DV4 - SN3819; ConvF(9.39, 9.39, 9.39); Calibrated: 2020/4/30
- Sensor-Surface: 2mm (Mechanical Surface Detection)
- Electronics: DAE4 Sn1226; Calibrated: 2020/5/15
- Phantom: SAM (30deg probe tilt) with CRP v4.0; Type: QD000P40CC; Serial: TP:1500
- Measurement SW: DASY52, Version 52.10 (3); SEMCAD X Version 14.6.13 (7474)

Ch26765/Area Scan (41x81x1): Interpolated grid: $dx=1.500 \text{ mm}$, $dy=1.500 \text{ mm}$
Maximum value of SAR (interpolated) = 0.736 W/kg

Ch26765/Zoom Scan (5x5x7)/Cube 0: Measurement grid: $dx=8\text{mm}$, $dy=8\text{mm}$, $dz=5\text{mm}$
Reference Value = 2.373 V/m ; Power Drift = 0.01 dB
Peak SAR (extrapolated) = 0.969 W/kg
SAR(1 g) = 0.516 W/kg ; SAR(10 g) = 0.273 W/kg
Maximum value of SAR (measured) = 0.749 W/kg



46_LTE Band 66_20M_QPSK_1_0_Bottom Side_10mm_Ch132072

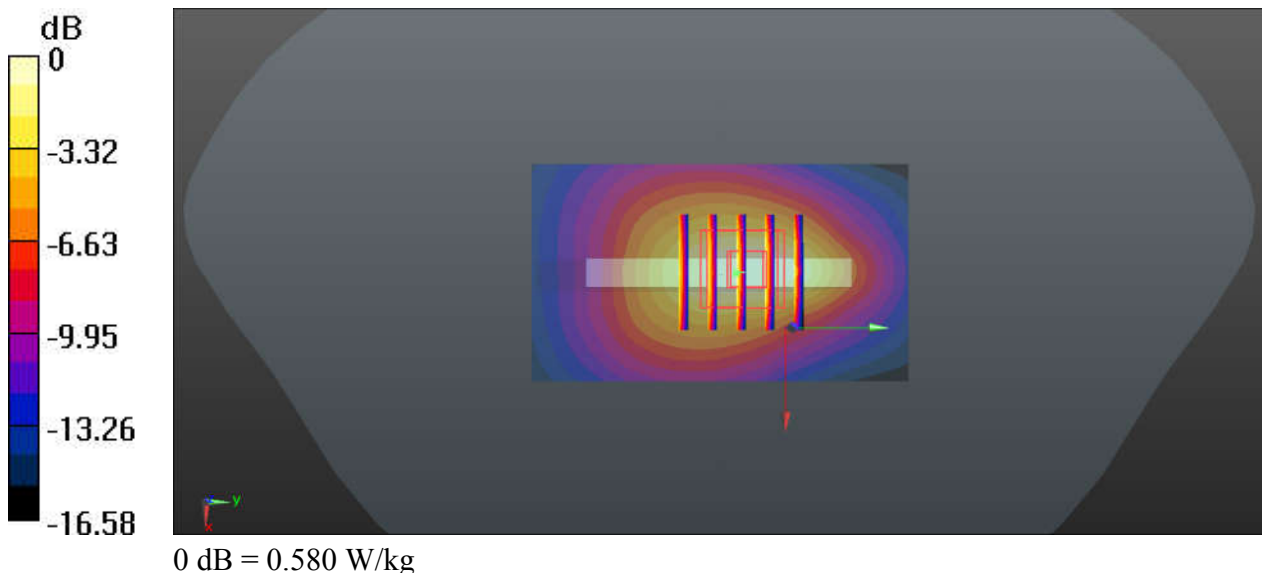
Communication System: UID 0, LTE (0); Frequency: 1720 MHz; Duty Cycle: 1:1
Medium: HSL_1750_200807 Medium parameters used: $f = 1720$ MHz; $\sigma = 1.368$ S/m; $\epsilon_r = 41.533$;
 $\rho = 1000$ kg/m³
Ambient Temperature : 23.4 °C; Liquid Temperature : 22.7 °C

DASY5 Configuration:

- Probe: EX3DV4 - SN7576; ConvF(8.88, 8.88, 8.88); Calibrated: 2020.01.22;
- Sensor-Surface: 2mm (Mechanical Surface Detection)
- Electronics: DAE3 Sn528; Calibrated: 2020.03.16
- Phantom: SAM (Front) with CRP v5.0; Type: QD000P40CD; Serial: TP:1795
- Measurement SW: DASY52, Version 52.8 (8); SEMCAD X Version 14.6.10 (7331)

Ch132072/Area Scan (41x71x1): Interpolated grid: dx=1.500 mm, dy=1.500 mm
Maximum value of SAR (interpolated) = 0.595 W/kg

Ch132072/Zoom Scan (5x5x7)/Cube 0: Measurement grid: dx=8mm, dy=8mm, dz=5mm
Reference Value = 20.29 V/m; Power Drift = 0.01 dB
Peak SAR (extrapolated) = 0.718 W/kg
SAR(1 g) = 0.431 W/kg; SAR(10 g) = 0.239 W/kg
Maximum value of SAR (measured) = 0.580 W/kg



47_LTE Band 25_20M_QPSK_1_0_Bottom Side_10mm_Ch26590

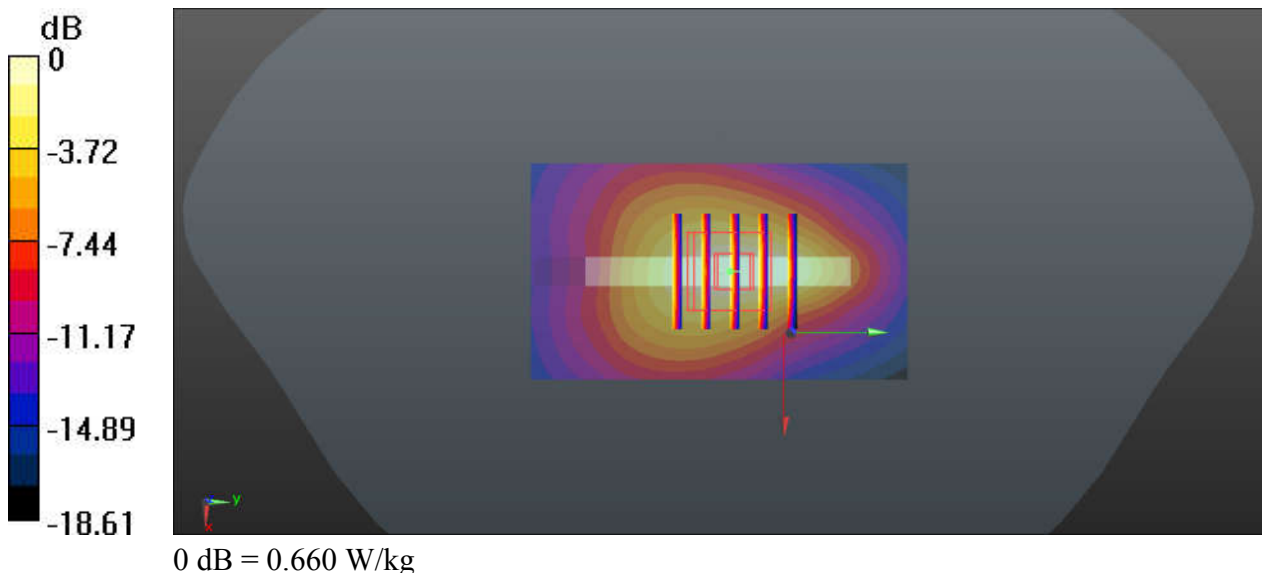
Communication System: UID 0, LTE (0); Frequency: 1905 MHz; Duty Cycle: 1:1
Medium: HSL_1900_200805 Medium parameters used: $f = 1905 \text{ MHz}$; $\sigma = 1.424 \text{ S/m}$; $\epsilon_r = 41.122$;
 $\rho = 1000 \text{ kg/m}^3$
Ambient Temperature : $23.5 \text{ }^\circ\text{C}$; Liquid Temperature : $22.7 \text{ }^\circ\text{C}$

DASY5 Configuration:

- Probe: EX3DV4 - SN7576; ConvF(8.58, 8.58, 8.58); Calibrated: 2020.01.22;
- Sensor-Surface: 2mm (Mechanical Surface Detection)
- Electronics: DAE3 Sn528; Calibrated: 2020.03.16
- Phantom: SAM (Front) with CRP v5.0; Type: QD000P40CD; Serial: TP:1795
- Measurement SW: DASY52, Version 52.8 (8); SEMCAD X Version 14.6.10 (7331)

Ch26590/Area Scan (41x71x1): Interpolated grid: $dx=1.500 \text{ mm}$, $dy=1.500 \text{ mm}$
Maximum value of SAR (interpolated) = 0.690 W/kg

Ch26590/Zoom Scan (5x5x7)/Cube 0: Measurement grid: $dx=8\text{mm}$, $dy=8\text{mm}$, $dz=5\text{mm}$
Reference Value = 21.65 V/m ; Power Drift = -0.02 dB
Peak SAR (extrapolated) = 0.831 W/kg
SAR(1 g) = 0.471 W/kg ; SAR(10 g) = 0.255 W/kg
Maximum value of SAR (measured) = 0.660 W/kg



48_LTE Band 30_10M_QPSK_25_12_Top Side_Ch27710

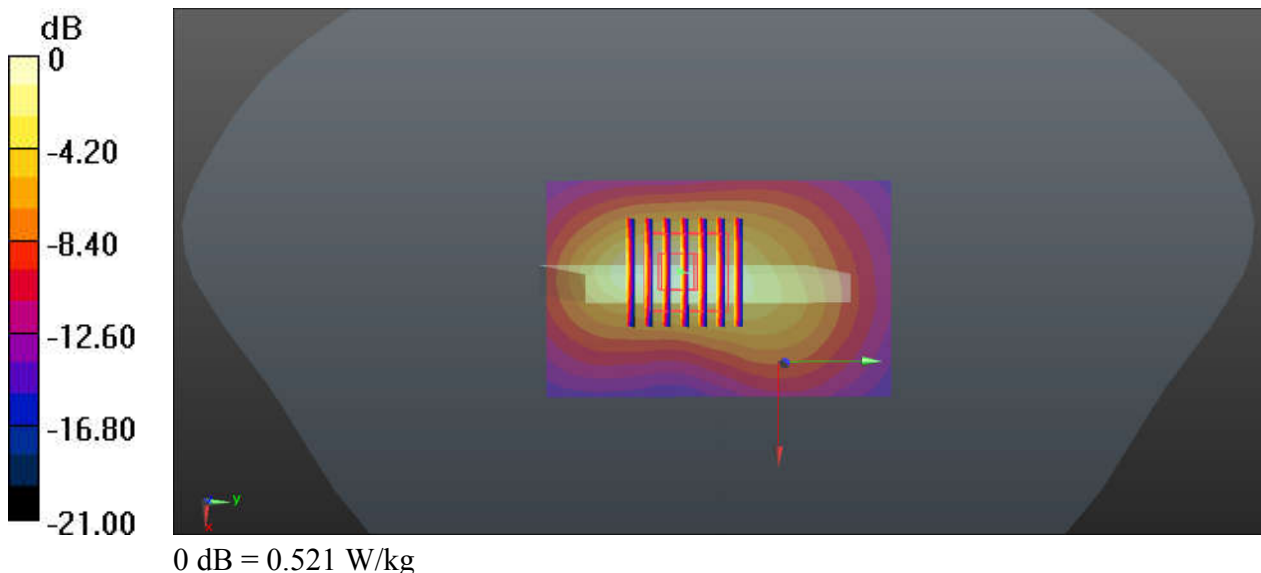
Communication System: UID 0, LTE (0); Frequency: 2310 MHz; Duty Cycle: 1:1
Medium: HSL_2300_200803 Medium parameters used: $f = 2310$ MHz; $\sigma = 1.689$ S/m; $\epsilon_r = 38.197$;
 $\rho = 1000$ kg/m³
Ambient Temperature : 23.5 °C ; Liquid Temperature : 22.4 °C

DASY5 Configuration:

- Probe: EX3DV4 - SN7576; ConvF(8.03, 8.03, 8.03); Calibrated: 2020.01.22;
- Sensor-Surface: 2mm (Mechanical Surface Detection)
- Electronics: DAE3 Sn528; Calibrated: 2020.03.16
- Phantom: SAM (Front) with CRP v5.0; Type: QD000P40CD; Serial: TP:1795
- Measurement SW: DASY52, Version 52.8 (8); SEMCAD X Version 14.6.10 (7331)

Ch27710/Area Scan (51x81x1): Interpolated grid: dx=1.200 mm, dy=1.200 mm
Maximum value of SAR (interpolated) = 0.528 W/kg

Ch27710/Zoom Scan (7x7x7)/Cube 0: Measurement grid: dx=5mm, dy=5mm, dz=5mm
Reference Value = 15.57 V/m; Power Drift = 0.10 dB
Peak SAR (extrapolated) = 0.682 W/kg
SAR(1 g) = 0.350 W/kg; SAR(10 g) = 0.170 W/kg
Maximum value of SAR (measured) = 0.521 W/kg



49_LTE Band 7_20M_QPSK_50_24_Back_10mm_Ch21350

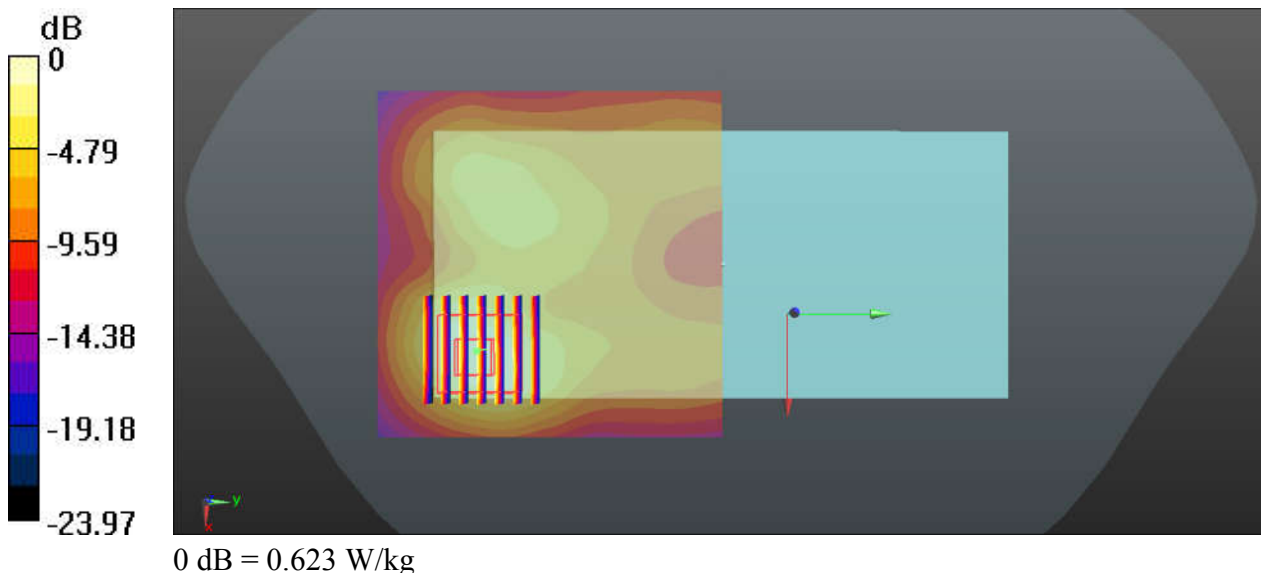
Communication System: UID 0, LTE (0); Frequency: 2560 MHz; Duty Cycle: 1:1
Medium: HSL_2600_200731 Medium parameters used: $f = 2560$ MHz; $\sigma = 1.944$ S/m; $\epsilon_r = 38.479$;
 $\rho = 1000$ kg/m³
Ambient Temperature : 23.7 °C; Liquid Temperature : 22.5 °C

DASY5 Configuration:

- Probe: EX3DV4 - SN7576; ConvF(7.47, 7.47, 7.47); Calibrated: 2020.01.22;
- Sensor-Surface: 2mm (Mechanical Surface Detection)
- Electronics: DAE3 Sn528; Calibrated: 2020.03.16
- Phantom: SAM (Front) with CRP v5.0; Type: QD000P40CD; Serial: TP:1795
- Measurement SW: DASY52, Version 52.8 (8); SEMCAD X Version 14.6.10 (7331)

Ch21350/Area Scan (81x81x1): Interpolated grid: dx=1.200 mm, dy=1.200 mm
Maximum value of SAR (interpolated) = 0.690 W/kg

Ch21350/Zoom Scan (7x7x7)/Cube 0: Measurement grid: dx=5mm, dy=5mm, dz=5mm
Reference Value = 5.698 V/m; Power Drift = -0.11 dB
Peak SAR (extrapolated) = 0.895 W/kg
SAR(1 g) = 0.416 W/kg; SAR(10 g) = 0.196 W/kg
Maximum value of SAR (measured) = 0.623 W/kg



50_LTE Band 41_20M_QPSK_50_50_Back_10mm_Ch41055

Communication System: UID 0, LTE (0); Frequency: 2636.5 MHz; Duty Cycle: 1:1.59
Medium: HSL_2600_200731 Medium parameters used: $f = 2636.5$ MHz; $\sigma = 2.021$ S/m; $\epsilon_r = 38.1$;
 $\rho = 1000$ kg/m³
Ambient Temperature : 23.7 °C; Liquid Temperature : 22.5 °C

DASY5 Configuration:

- Probe: EX3DV4 - SN7576; ConvF(7.47, 7.47, 7.47); Calibrated: 2020.01.22;
- Sensor-Surface: 2mm (Mechanical Surface Detection)
- Electronics: DAE3 Sn528; Calibrated: 2020.03.16
- Phantom: SAM (Front) with CRP v5.0; Type: QD000P40CD; Serial: TP:1795
- Measurement SW: DASY52, Version 52.8 (8); SEMCAD X Version 14.6.10 (7331)

Ch41055/Area Scan (81x81x1): Interpolated grid: dx=1.200 mm, dy=1.200 mm
Maximum value of SAR (interpolated) = 0.724 W/kg

Ch41055/Zoom Scan (7x7x7)/Cube 0: Measurement grid: dx=5mm, dy=5mm, dz=5mm
Reference Value = 5.264 V/m; Power Drift = 0.03 dB
Peak SAR (extrapolated) = 0.997 W/kg
SAR(1 g) = 0.453 W/kg; SAR(10 g) = 0.212 W/kg
Maximum value of SAR (measured) = 0.712 W/kg

