

System Check_Head_1750MHz

DUT: D1750V2-SN:1090

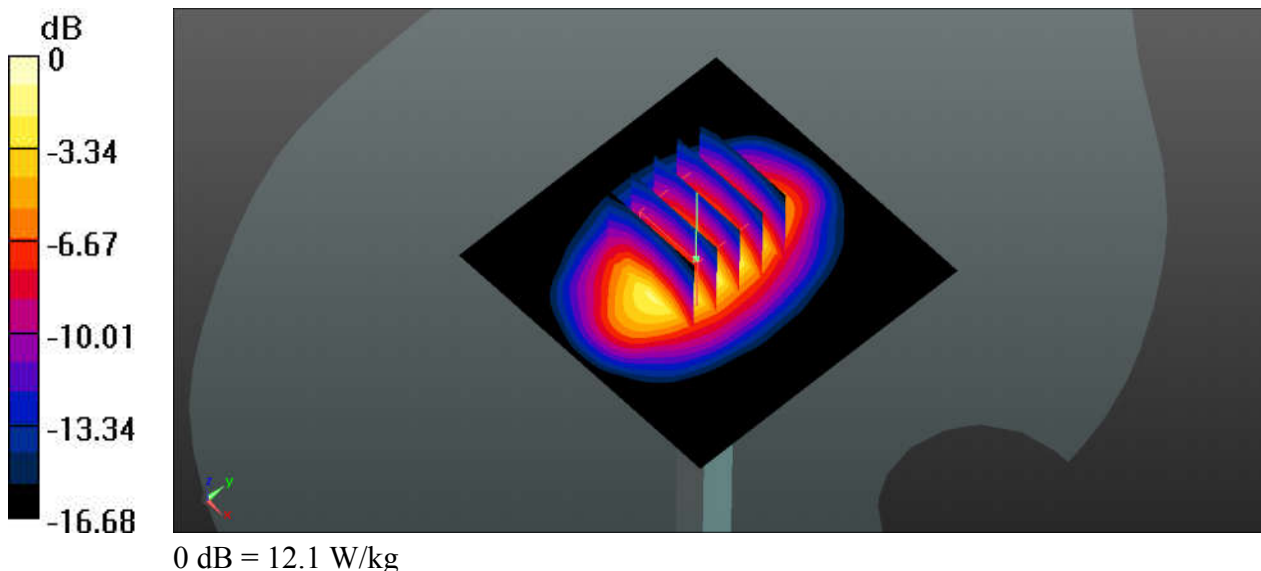
Communication System: UID 0, CW; Frequency: 1750 MHz; Duty Cycle: 1:1
Medium: HSL_1750_190807 Medium parameters used: $f = 1750$ MHz; $\sigma = 1.383$ S/m; $\epsilon_r = 39.897$;
 $\rho = 1000$ kg/m³
Ambient Temperature : 23.8 °C; Liquid Temperature : 22.4 °C

DASY5 Configuration:

- Probe: EX3DV4 - SN3819; ConvF(8.54, 8.54, 8.54); Calibrated: 2019.03.01;
- Sensor-Surface: 2mm (Mechanical Surface Detection)
- Electronics: DAE4 Sn715; Calibrated: 2019.01.23
- Phantom: SAM (Front) with CRP v5.0; Type: QD000P40CD; Serial: TP:1795
- Measurement SW: DASY52, Version 52.8 (8); SEMCAD X Version 14.6.10 (7331)

Pin=250mW/Area Scan (61x61x1): Interpolated grid: dx=15mm, dy=15mm
Maximum value of SAR (interpolated) = 11.9 W/kg

Pin=250mW/Zoom Scan (5x5x7)/Cube 0: Measurement grid: dx=8mm, dy=8mm, dz=5mm
Reference Value = 92.04 V/m; Power Drift = 0.14 dB
Peak SAR (extrapolated) = 15.2 W/kg
SAR(1 g) = 8.54 W/kg; SAR(10 g) = 4.56 W/kg
Maximum value of SAR (measured) = 12.1 W/kg



System Check_Head_1900MHz

DUT: D1900V2-SN:5d182

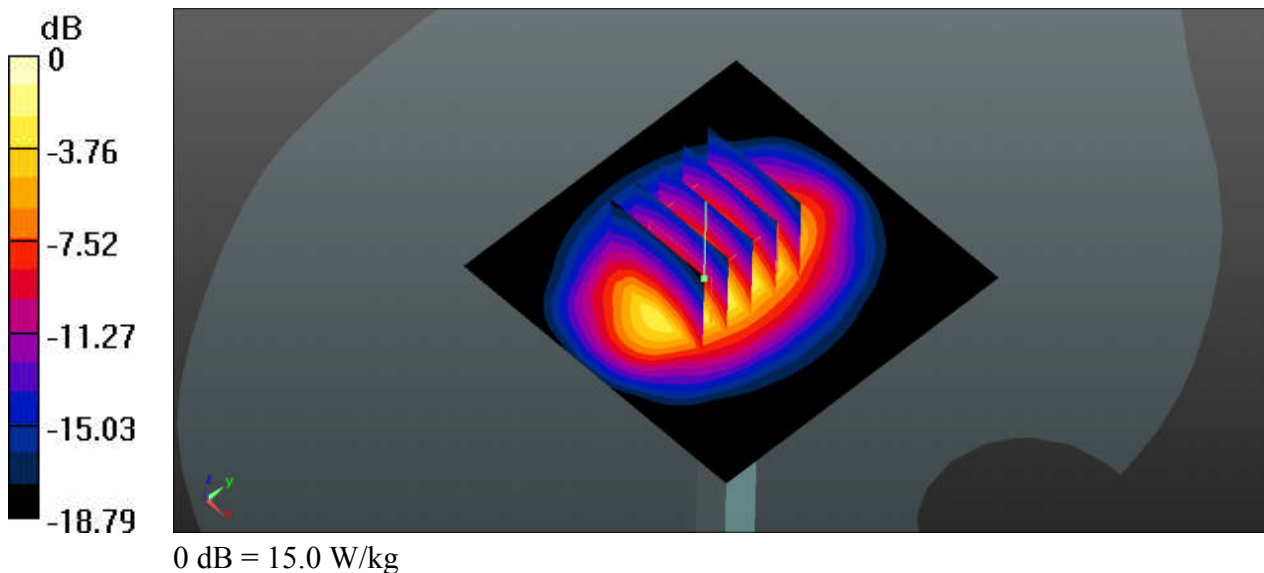
Communication System: UID 0, CW; Frequency: 1900 MHz; Duty Cycle: 1:1
Medium: HSL_1900_190725 Medium parameters used: $f = 1900$ MHz; $\sigma = 1.448$ S/m; $\epsilon_r = 39$; $\rho = 1000$ kg/m³
Ambient Temperature : 23.6 °C; Liquid Temperature : 22.5 °C

DASY5 Configuration:

- Probe: EX3DV4 - SN3819; ConvF(8.27, 8.27, 8.27); Calibrated: 2019.03.01;
- Sensor-Surface: 2mm (Mechanical Surface Detection)
- Electronics: DAE4 Sn715; Calibrated: 2019.01.23
- Phantom: SAM (Front) with CRP v5.0; Type: QD000P40CD; Serial: TP:1795
- Measurement SW: DASY52, Version 52.8 (8); SEMCAD X Version 14.6.10 (7331)

Pin=250mW/Area Scan (61x61x1): Interpolated grid: dx=15mm, dy=15mm
Maximum value of SAR (interpolated) = 15.3 W/kg

Pin=250mW/Zoom Scan (5x5x7)/Cube 0: Measurement grid: dx=8mm, dy=8mm, dz=5mm
Reference Value = 99.46 V/m; Power Drift = 0.15 dB
Peak SAR (extrapolated) = 19.6 W/kg
SAR(1 g) = 10.3 W/kg; SAR(10 g) = 5.29 W/kg
Maximum value of SAR (measured) = 15.0 W/kg



System Check_Head_1900MHz

DUT: D1900V2-SN:5d182

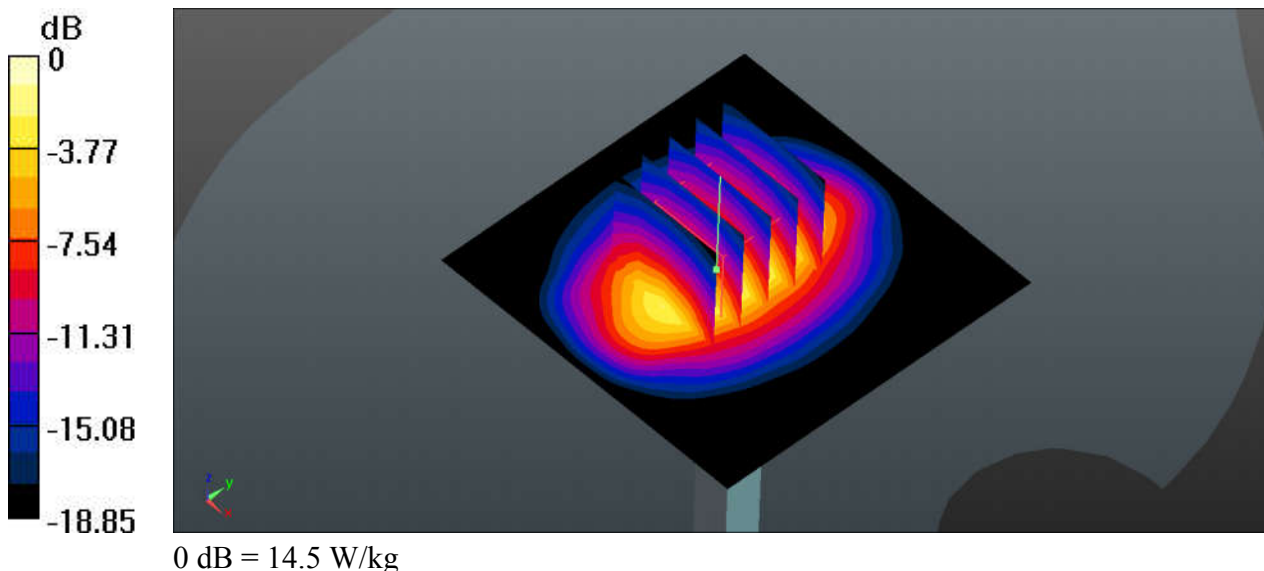
Communication System: UID 0, CW; Frequency: 1900 MHz; Duty Cycle: 1:1
Medium: HSL_1900_190806 Medium parameters used: $f = 1900 \text{ MHz}$; $\sigma = 1.455 \text{ S/m}$; $\epsilon_r = 40.068$;
 $\rho = 1000 \text{ kg/m}^3$
Ambient Temperature : $23.7 \text{ }^\circ\text{C}$; Liquid Temperature : $22.6 \text{ }^\circ\text{C}$

DASY5 Configuration:

- Probe: EX3DV4 - SN3819; ConvF(8.27, 8.27, 8.27); Calibrated: 2019.03.01;
- Sensor-Surface: 2mm (Mechanical Surface Detection)
- Electronics: DAE4 Sn715; Calibrated: 2019.01.23
- Phantom: SAM (Front) with CRP v5.0; Type: QD000P40CD; Serial: TP:1795
- Measurement SW: DASY52, Version 52.8 (8); SEMCAD X Version 14.6.10 (7331)

Pin=250mW/Area Scan (61x61x1): Interpolated grid: $dx=15\text{mm}$, $dy=15\text{mm}$
Maximum value of SAR (interpolated) = 14.3 W/kg

Pin=250mW/Zoom Scan (5x5x7)/Cube 0: Measurement grid: $dx=8\text{mm}$, $dy=8\text{mm}$, $dz=5\text{mm}$
Reference Value = 95.90 V/m ; Power Drift = 0.09 dB
Peak SAR (extrapolated) = 18.7 W/kg
SAR(1 g) = 9.95 W/kg ; SAR(10 g) = 5.08 W/kg
Maximum value of SAR (measured) = 14.5 W/kg



System Check_Head_2300MHz

DUT: D2300V2-SN:1056

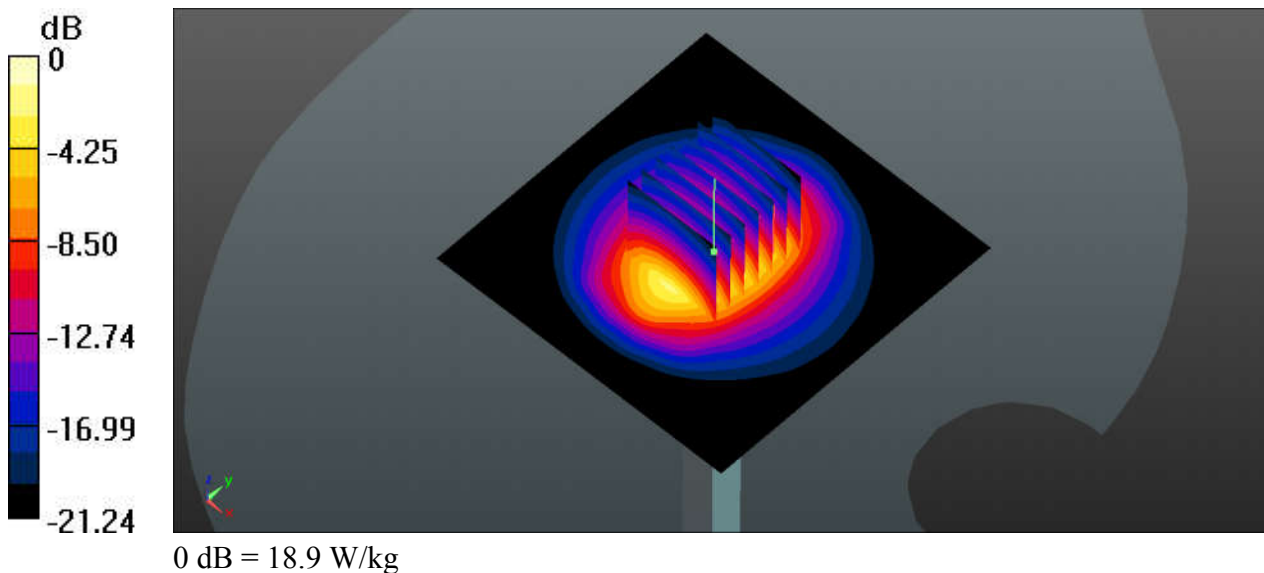
Communication System: UID 0, CW ; Frequency: 2300 MHz;Duty Cycle: 1:1
Medium: HSL_2300_190722 Medium parameters used: $f = 2300$ MHz; $\sigma = 1.693$ S/m; $\epsilon_r = 38.361$;
 $\rho = 1000$ kg/m³
Ambient Temperature : 23.3 °C ; Liquid Temperature : 22.6 °C

DASY5 Configuration:

- Probe: EX3DV4 - SN3819; ConvF(7.64, 7.64, 7.64); Calibrated: 2019.03.01;
- Sensor-Surface: 2mm (Mechanical Surface Detection)
- Electronics: DAE4 Sn715; Calibrated: 2019.01.23
- Phantom: SAM (Front) with CRP v5.0; Type: QD000P40CD; Serial: TP:1795
- Measurement SW: DASY52, Version 52.8 (8); SEMCAD X Version 14.6.10 (7331)

Pin=250mW/Area Scan (81x81x1): Interpolated grid: dx=12mm, dy=12mm
Maximum value of SAR (interpolated) = 18.7 W/kg

Pin=250mW/Zoom Scan (7x7x7)/Cube 0: Measurement grid: dx=5mm, dy=5mm, dz=5mm
Reference Value = 107.1 V/m; Power Drift = -0.02 dB
Peak SAR (extrapolated) = 25.5 W/kg
SAR(1 g) = 12.3 W/kg; SAR(10 g) = 5.78 W/kg
Maximum value of SAR (measured) = 18.9 W/kg



System Check_Head_2300MHz

DUT: D2300V2-SN:1056

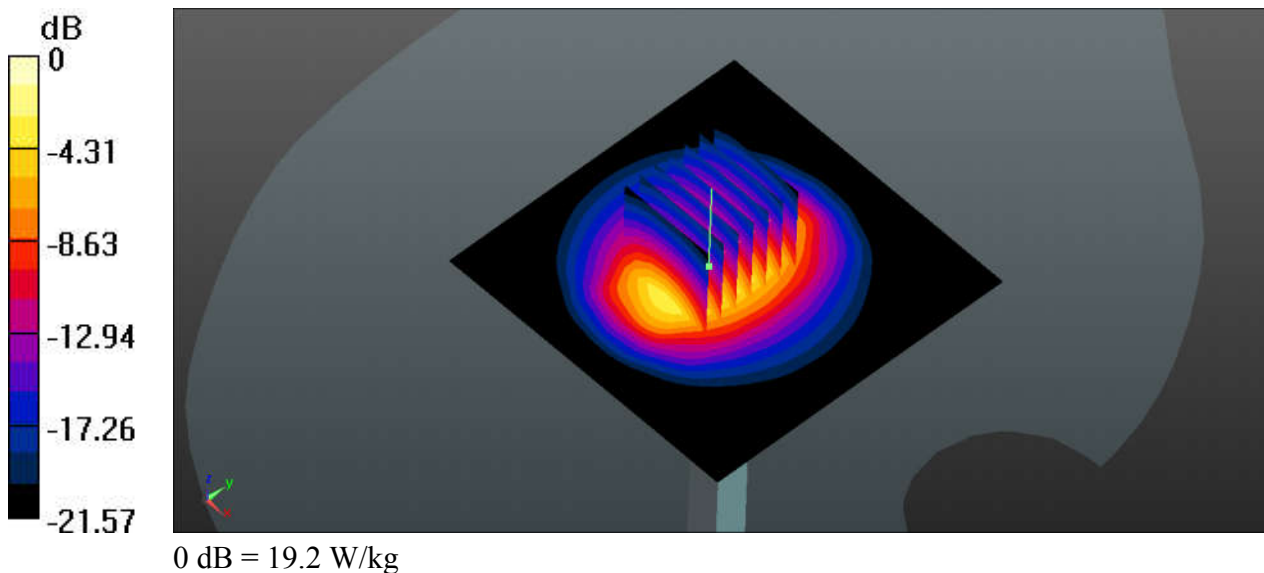
Communication System: UID 0, CW (0); Frequency: 2300 MHz; Duty Cycle: 1:1
Medium: HSL_2300_190727 Medium parameters used: $f = 2300$ MHz; $\sigma = 1.664$ S/m; $\epsilon_r = 38.851$;
 $\rho = 1000$ kg/m³
Ambient Temperature : 23.6 °C ; Liquid Temperature : 22.4 °C

DASY5 Configuration:

- Probe: EX3DV4 - SN3819; ConvF(7.64, 7.64, 7.64); Calibrated: 2019.03.01;
- Sensor-Surface: 2mm (Mechanical Surface Detection)
- Electronics: DAE4 Sn715; Calibrated: 2019.01.23
- Phantom: SAM (Front) with CRP v5.0; Type: QD000P40CD; Serial: TP:1795
- Measurement SW: DASY52, Version 52.8 (8); SEMCAD X Version 14.6.10 (7331)

Pin=250mW/Area Scan (81x81x1): Interpolated grid: dx=12mm, dy=12mm
Maximum value of SAR (interpolated) = 19.0 W/kg

Pin=250mW/Zoom Scan (7x7x7)/Cube 0: Measurement grid: dx=5mm, dy=5mm, dz=5mm
Reference Value = 100.7 V/m; Power Drift = 0.08 dB
Peak SAR (extrapolated) = 26.2 W/kg
SAR(1 g) = 12.5 W/kg; SAR(10 g) = 5.81 W/kg
Maximum value of SAR (measured) = 19.2 W/kg



System Check_Head_2450MHz

DUT: D2450V2-SN:924

Communication System: UID 0, CW; Frequency: 2450 MHz; Duty Cycle: 1:1

Medium: HSL_2450_190731 Medium parameters used: $f = 2450$ MHz; $\sigma = 1.754$ S/m; $\epsilon_r = 40.369$;
 $\rho = 1000$ kg/m³

Ambient Temperature : 23.8 °C; Liquid Temperature : 22.8 °C

DASY5 Configuration:

- Probe: EX3DV4 - SN3935; ConvF(7.69, 7.69, 7.69); Calibrated: 2018.11.26
- Sensor-Surface: 2mm (Mechanical Surface Detection)
- Electronics: DAE4 Sn1303; Calibrated: 2019.01.03
- Phantom: Twin-SAM1(P1aP2a20); Type: QD 000 P40 CD; Serial: TP:1670
- Measurement SW: DASY52, Version 52.10 (2); SEMCAD X Version 14.6.12 (7450)

Pin=250mW/Area Scan (81x81x1): Interpolated grid: dx=12mm, dy=12mm

Maximum value of SAR (interpolated) = 19.5 W/kg

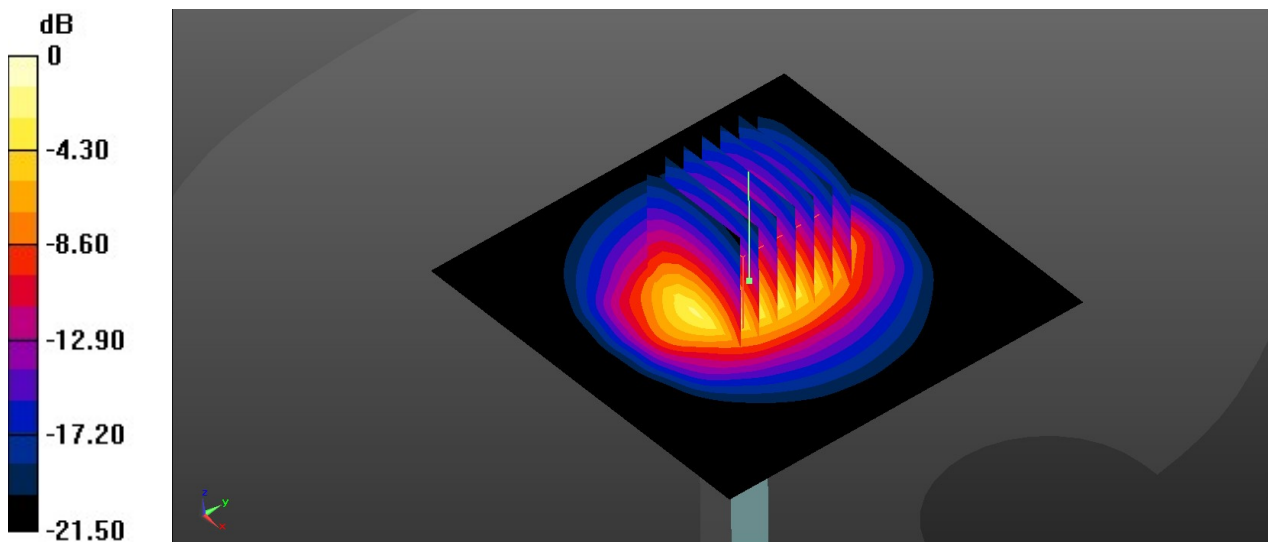
Pin=250mW/Zoom Scan (7x7x7)/Cube 0: Measurement grid: dx=5mm, dy=5mm, dz=5mm

Reference Value = 90.70 V/m; Power Drift = -0.01 dB

Peak SAR (extrapolated) = 25.9 W/kg

SAR(1 g) = 12.7 W/kg; SAR(10 g) = 5.99 W/kg

Maximum value of SAR (measured) = 19.4 W/kg



0 dB = 19.4 W/kg

System Check_Head_2450MHz

DUT: D2450V2-SN:924

Communication System: UID 0, CW; Frequency: 2450 MHz; Duty Cycle: 1:1

Medium: HSL_2450_190809 Medium parameters used: $f = 2450$ MHz; $\sigma = 1.82$ S/m; $\epsilon_r = 39.753$; $\rho = 1000$ kg/m³

Ambient Temperature : 23.4 °C; Liquid Temperature : 22.8 °C

DASY5 Configuration:

- Probe: ES3DV3 - SN3191; ConvF(4.69, 4.69, 4.69); Calibrated: 2019.01.29;
- Sensor-Surface: 3mm (Mechanical Surface Detection)
- Electronics: DAE4 Sn1437; Calibrated: 2018.10.15
- Phantom: SAM2; Type: QD000P40CD; Serial: TP:1671
- Measurement SW: DASY52, Version 52.8 (8); SEMCAD X Version 14.6.10 (7331)

Pin=250mW/Area Scan (81x81x1): Interpolated grid: dx=12mm, dy=12mm

Maximum value of SAR (interpolated) = 21.3 W/kg

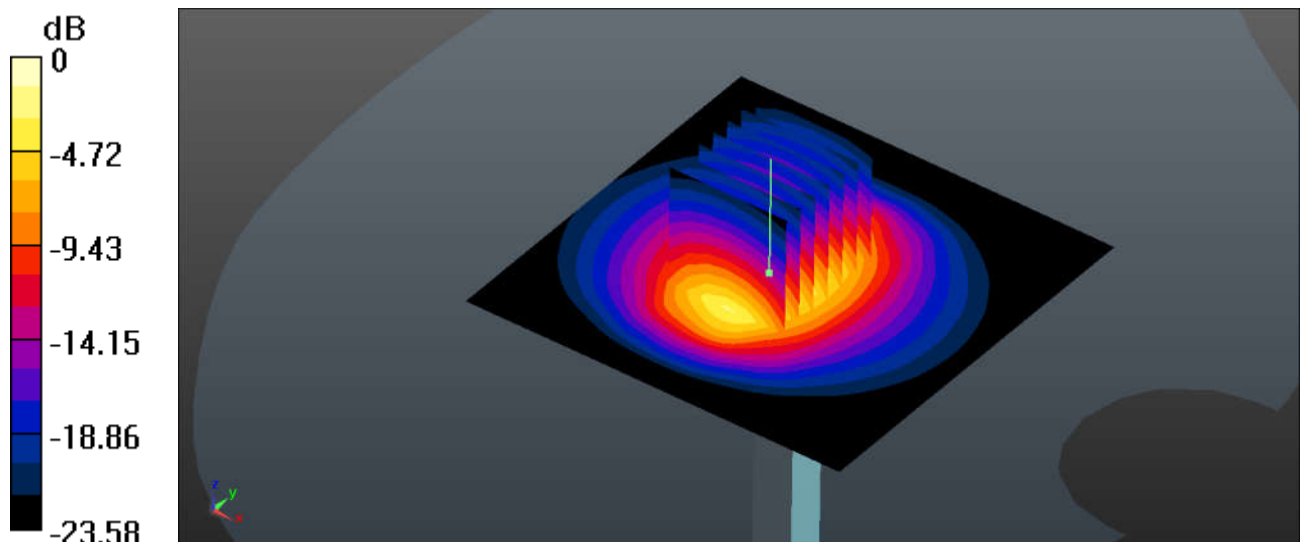
Pin=250mW/Zoom Scan (7x7x7)/Cube 0: Measurement grid: dx=5mm, dy=5mm, dz=5mm

Reference Value = 88.31 V/m; Power Drift = 0.18 dB

Peak SAR (extrapolated) = 30.2 W/kg

SAR(1 g) = 13.6 W/kg; SAR(10 g) = 6.13 W/kg

Maximum value of SAR (measured) = 21.6 W/kg



0 dB = 21.3 W/kg

System Check_Head_2600MHz

DUT: D2600V2-SN:1070

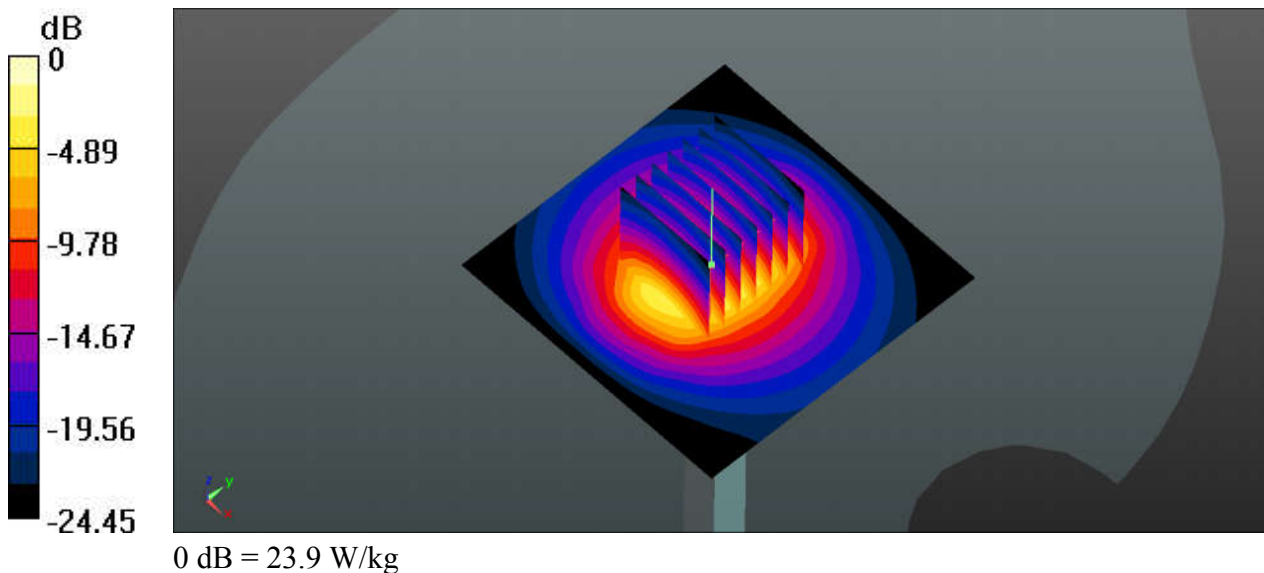
Communication System: UID 0, CW; Frequency: 2600 MHz; Duty Cycle: 1:1
Medium: HSL_2600_190723 Medium parameters used: $f = 2600$ MHz; $\sigma = 2.056$ S/m; $\epsilon_r = 37.284$;
 $\rho = 1000$ kg/m³
Ambient Temperature : 23.4 °C; Liquid Temperature : 22.5 °C

DASY5 Configuration:

- Probe: EX3DV4 - SN3819; ConvF(7.06, 7.06, 7.06); Calibrated: 2019.03.01;
- Sensor-Surface: 2mm (Mechanical Surface Detection)
- Electronics: DAE4 Sn715; Calibrated: 2019.01.23
- Phantom: SAM (Front) with CRP v5.0; Type: QD000P40CD; Serial: TP:1795
- Measurement SW: DASY52, Version 52.8 (8); SEMCAD X Version 14.6.10 (7331)

Pin=250mW/Area Scan (71x71x1): Interpolated grid: dx=12mm, dy=12mm
Maximum value of SAR (interpolated) = 24.3 W/kg

Pin=250mW/Zoom Scan (7x7x7)/Cube 0: Measurement grid: dx=5mm, dy=5mm, dz=5mm
Reference Value = 106.2 V/m; Power Drift = 0.14 dB
Peak SAR (extrapolated) = 34.0 W/kg
SAR(1 g) = 14.8 W/kg; SAR(10 g) = 6.41 W/kg
Maximum value of SAR (measured) = 23.9 W/kg



System Check_Head_2600MHz

DUT: D2600V2-SN:1070

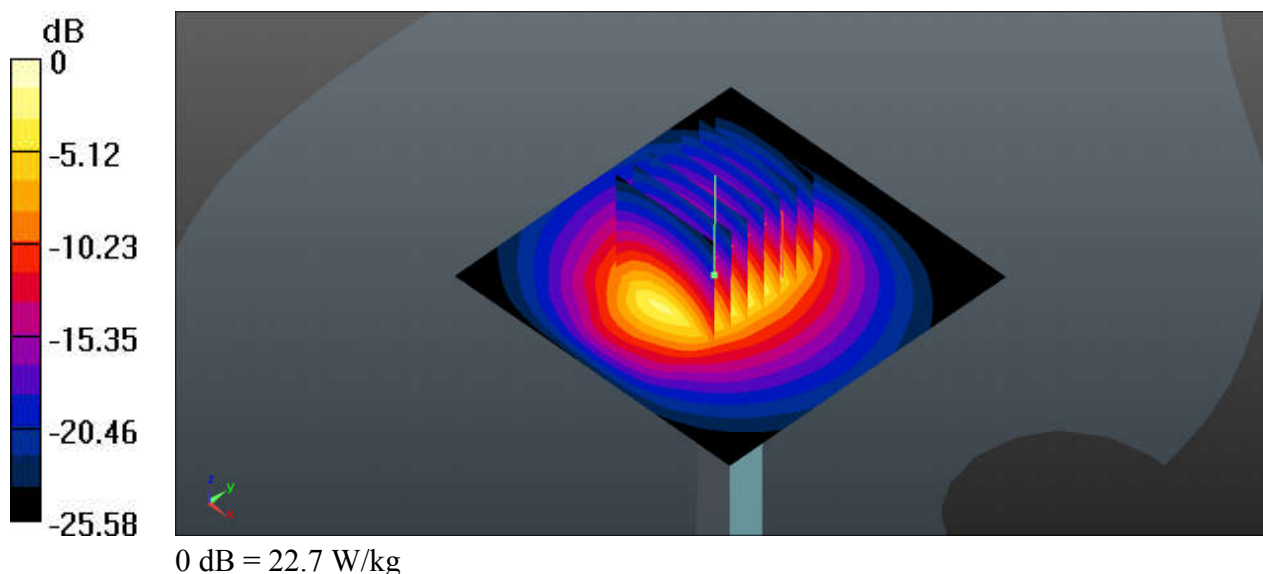
Communication System: UID 0, CW (0); Frequency: 2600 MHz; Duty Cycle: 1:1
Medium: HSL_2600_190730 Medium parameters used: $f = 2600$ MHz; $\sigma = 2.054$ S/m; $\epsilon_r = 38.328$;
 $\rho = 1000$ kg/m³
Ambient Temperature : 23.5 °C; Liquid Temperature : 22.4 °C

DASY5 Configuration:

- Probe: EX3DV4 - SN3819; ConvF(7.06, 7.06, 7.06); Calibrated: 2019.03.01;
- Sensor-Surface: 2mm (Mechanical Surface Detection)
- Electronics: DAE4 Sn715; Calibrated: 2019.01.23
- Phantom: SAM (Front) with CRP v5.0; Type: QD000P40CD; Serial: TP:1795
- Measurement SW: DASY52, Version 52.8 (8); SEMCAD X Version 14.6.10 (7331)

Pin=250mW/Area Scan (71x71x1): Interpolated grid: dx=12mm, dy=12mm
Maximum value of SAR (interpolated) = 22.7 W/kg

Pin=250mW/Zoom Scan (7x7x7)/Cube 0: Measurement grid: dx=5mm, dy=5mm, dz=5mm
Reference Value = 103.5 V/m; Power Drift = 0.17 dB
Peak SAR (extrapolated) = 33.1 W/kg
SAR(1 g) = 14.3 W/kg; SAR(10 g) = 6.16 W/kg
Maximum value of SAR (measured) = 23.1 W/kg



System Check_Head_3500MHz

DUT: D3500V2-SN:1037

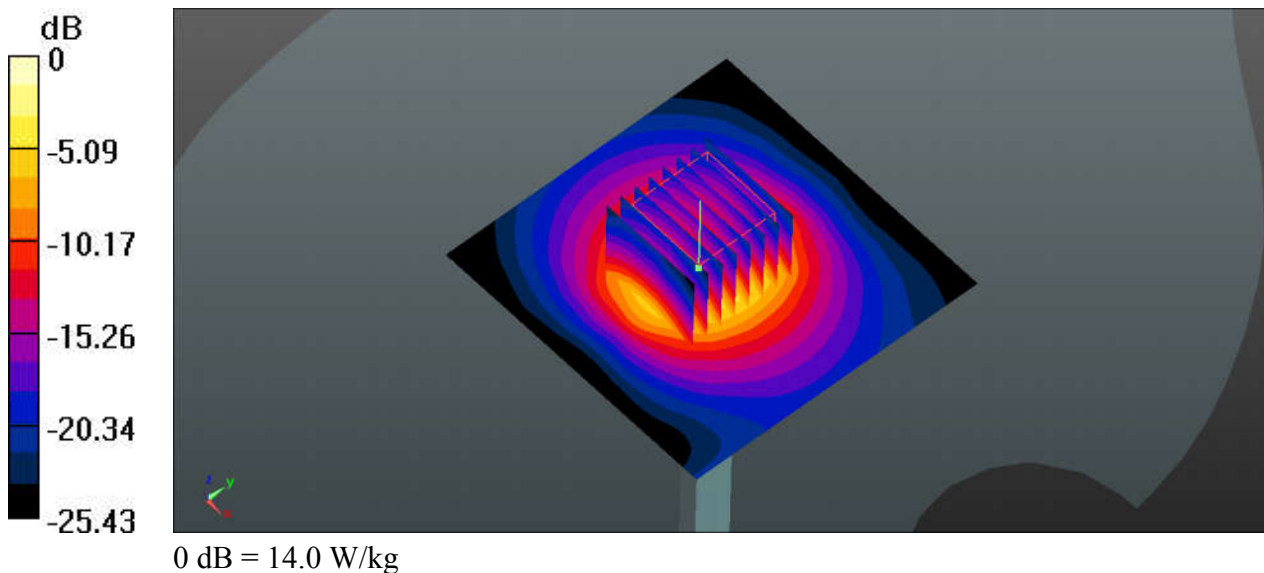
Communication System: UID 0, CW (0); Frequency: 3500 MHz; Duty Cycle: 1:1
Medium: HSL_3500-3700_190805 Medium parameters used: $f = 3500$ MHz; $\sigma = 2.909$ S/m; $\epsilon_r = 38.635$; $\rho = 1000$ kg/m³
Ambient Temperature : 23.4 °C; Liquid Temperature : 22.8 °C

DASY5 Configuration:

- Probe: EX3DV4 - SN3819; ConvF(6.89, 6.89, 6.89); Calibrated: 2019.03.01;
- Sensor-Surface: 1.4mm (Mechanical Surface Detection)
- Electronics: DAE4 Sn715; Calibrated: 2019.01.23
- Phantom: SAM (Front) with CRP v5.0; Type: QD000P40CD; Serial: TP:1795
- Measurement SW: DASY52, Version 52.8 (8); SEMCAD X Version 14.6.10 (7331)

Pin=100mW/Area Scan (81x81x1): Interpolated grid: dx=10mm, dy=10mm
Maximum value of SAR (interpolated) = 14.1 W/kg

Pin=100mW/Zoom Scan (8x8x7)/Cube 0: Measurement grid: dx=4mm, dy=4mm, dz=1.4mm
Reference Value = 57.96 V/m; Power Drift = 0.07 dB
Peak SAR (extrapolated) = 20.2 W/kg
SAR(1 g) = 7.04 W/kg; SAR(10 g) = 2.67 W/kg
Maximum value of SAR (measured) = 14.0 W/kg



System Check_Head_3700MHz

DUT: D3700V2-SN:1008

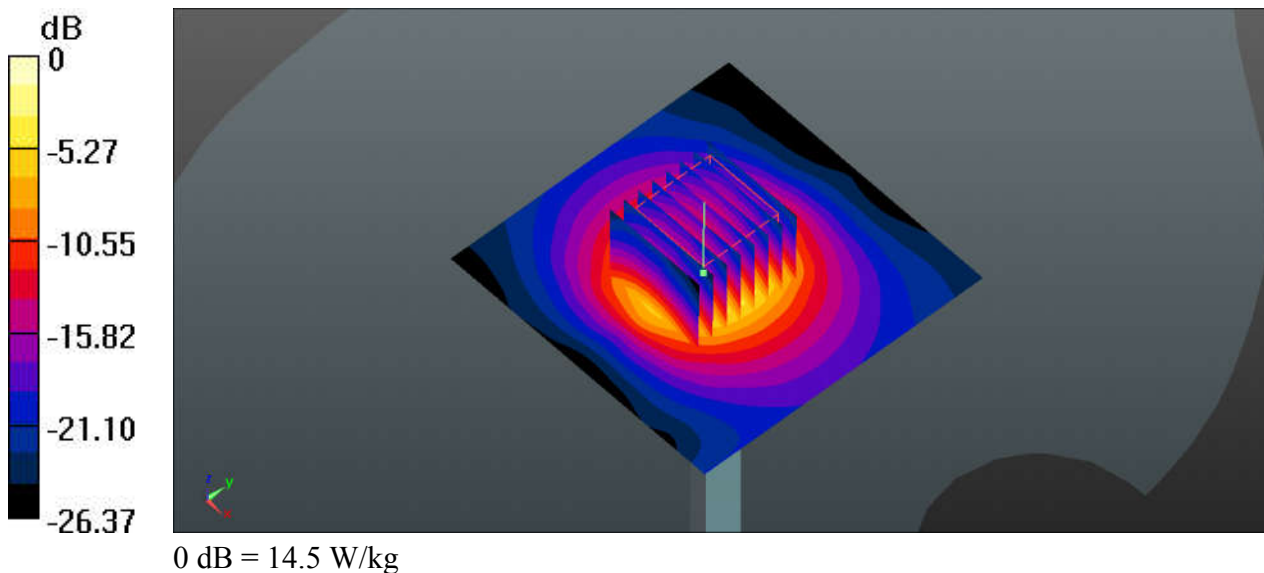
Communication System: UID 0, CW (0); Frequency: 3700 MHz; Duty Cycle: 1:1
Medium: HSL_3500-3700_190805 Medium parameters used: $f = 3700$ MHz; $\sigma = 3.054$ S/m; $\epsilon_r = 38.374$; $\rho = 1000$ kg/m³
Ambient Temperature : 23.4 °C; Liquid Temperature : 22.8 °C

DASY5 Configuration:

- Probe: EX3DV4 - SN3819; ConvF(6.67, 6.67, 6.67); Calibrated: 2019.03.01;
- Sensor-Surface: 1.4mm (Mechanical Surface Detection)
- Electronics: DAE4 Sn715; Calibrated: 2019.01.23
- Phantom: SAM (Front) with CRP v5.0; Type: QD000P40CD; Serial: TP:1795
- Measurement SW: DASY52, Version 52.8 (8); SEMCAD X Version 14.6.10 (7331)

Pin=100mW/Area Scan (81x81x1): Interpolated grid: dx=10mm, dy=10mm
Maximum value of SAR (interpolated) = 14.7 W/kg

Pin=100mW/Zoom Scan (8x8x7)/Cube 0: Measurement grid: dx=4mm, dy=4mm, dz=1.4mm
Reference Value = 57.02 V/m; Power Drift = -0.02 dB
Peak SAR (extrapolated) = 21.3 W/kg
SAR(1 g) = 7.1 W/kg; SAR(10 g) = 2.61 W/kg
Maximum value of SAR (measured) = 14.5 W/kg



System Check_Head_5250MHz

DUT: D5GHzV2-SN:1128

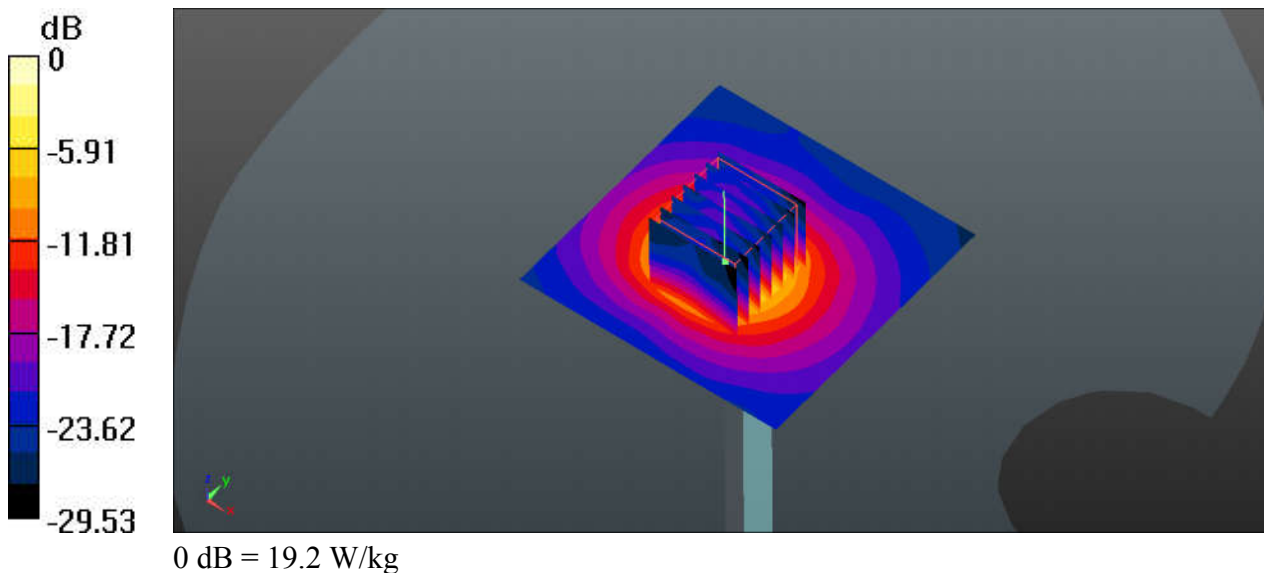
Communication System: UID 0, CW (0); Frequency: 5250 MHz; Duty Cycle: 1:1
Medium: HSL_5250_190802 Medium parameters used: $f = 5250$ MHz; $\sigma = 4.638$ S/m; $\epsilon_r = 37.088$;
 $\rho = 1000$ kg/m³
Ambient Temperature : 23.7 °C; Liquid Temperature : 22.3 °C

DASY5 Configuration:

- Probe: EX3DV4 - SN3819; ConvF(5.07, 5.07, 5.07); Calibrated: 2019.03.01;
- Sensor-Surface: 1.4mm (Mechanical Surface Detection)
- Electronics: DAE4 Sn715; Calibrated: 2019.01.23
- Phantom: SAM (Front) with CRP v5.0; Type: QD000P40CD; Serial: TP:1795
- Measurement SW: DASY52, Version 52.8 (8); SEMCAD X Version 14.6.10 (7331)

Pin=100mW/Area Scan (71x71x1): Interpolated grid: dx=10mm, dy=10mm
Maximum value of SAR (interpolated) = 18.9 W/kg

Pin=100mW/Zoom Scan (7x7x7)/Cube 0: Measurement grid: dx=4mm, dy=4mm, dz=1.4mm
Reference Value = 50.39 V/m; Power Drift = 0.19 dB
Peak SAR (extrapolated) = 32.0 W/kg
SAR(1 g) = 7.77 W/kg; SAR(10 g) = 2.16 W/kg
Maximum value of SAR (measured) = 19.2 W/kg



System Check_Head_5600MHz

DUT: D5GHzV2-SN:1128

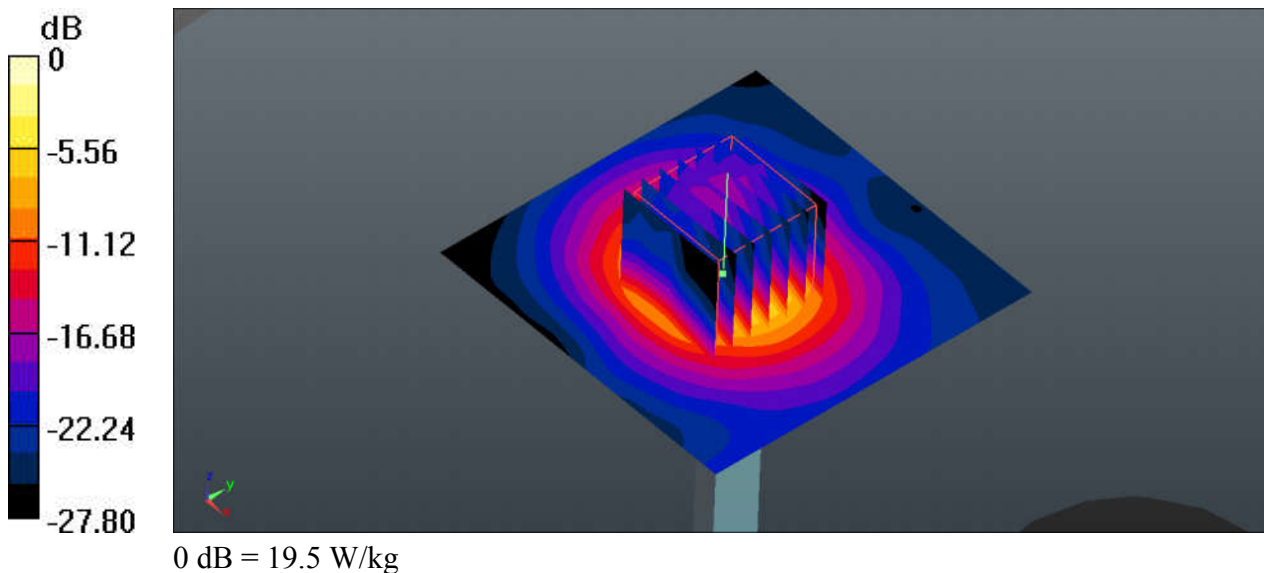
Communication System: UID 0, CW (0); Frequency: 5600 MHz; Duty Cycle: 1:1
Medium: HSL_5600_190803 Medium parameters used: $f = 5600$ MHz; $\sigma = 5.048$ S/m; $\epsilon_r = 36.534$;
 $\rho = 1000$ kg/m³
Ambient Temperature : 23.5 °C; Liquid Temperature : 22.5 °C

DASY5 Configuration:

- Probe: EX3DV4 - SN3819; ConvF(4.7, 4.7, 4.7); Calibrated: 2019.03.01;
- Sensor-Surface: 1.4mm (Mechanical Surface Detection)
- Electronics: DAE4 Sn715; Calibrated: 2019.01.23
- Phantom: SAM (Front) with CRP v5.0; Type: QD000P40CD; Serial: TP:1795
- Measurement SW: DASY52, Version 52.8 (8); SEMCAD X Version 14.6.10 (7331)

Pin=100mW/Area Scan (71x71x1): Interpolated grid: dx=10mm, dy=10mm
Maximum value of SAR (interpolated) = 19.0 W/kg

Pin=100mW/Zoom Scan (7x7x7)/Cube 0: Measurement grid: dx=4mm, dy=4mm, dz=1.4mm
Reference Value = 51.67 V/m; Power Drift = -0.17 dB
Peak SAR (extrapolated) = 34.1 W/kg
SAR(1 g) = 7.91 W/kg; SAR(10 g) = 2.28 W/kg
Maximum value of SAR (measured) = 19.5 W/kg



System Check_Head_5750MHz

DUT: D5GHzV2-SN:1128

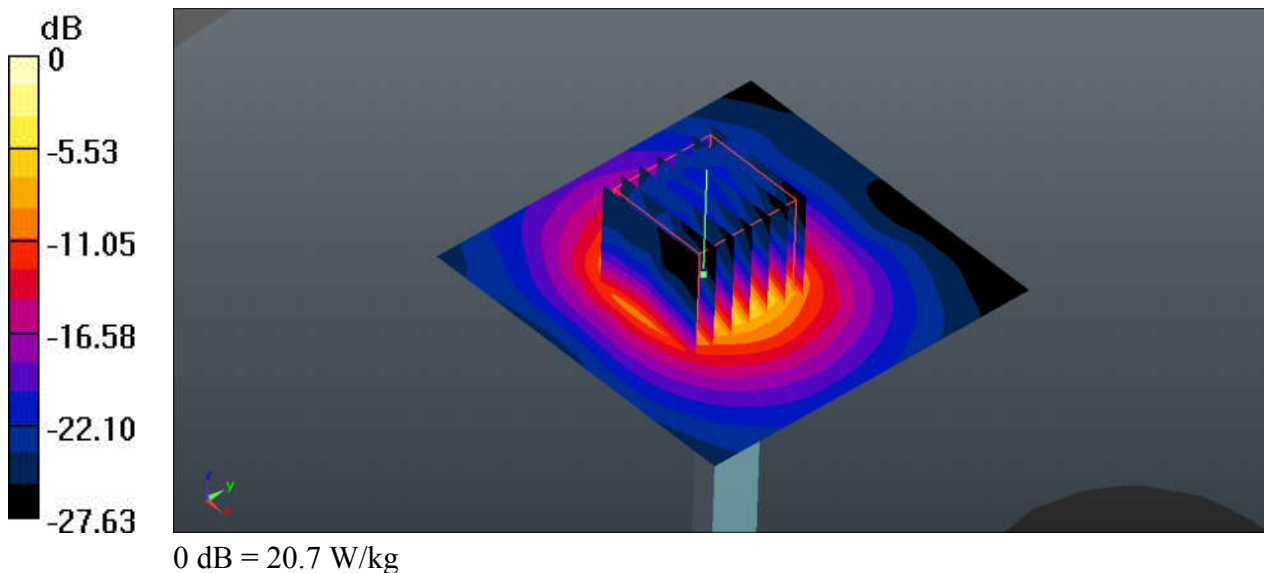
Communication System: UID 0, CW (0); Frequency: 5750 MHz; Duty Cycle: 1:1
Medium: HSL_5750_190804 Medium parameters used: $f = 5750$ MHz; $\sigma = 5.22$ S/m; $\epsilon_r = 36.277$; $\rho = 1000$ kg/m³
Ambient Temperature : 23.6 °C; Liquid Temperature : 22.7 °C

DASY5 Configuration:

- Probe: EX3DV4 - SN3819; ConvF(4.77, 4.77, 4.77); Calibrated: 2019.03.01;
- Sensor-Surface: 1.4mm (Mechanical Surface Detection)
- Electronics: DAE4 Sn715; Calibrated: 2019.01.23
- Phantom: SAM (Front) with CRP v5.0; Type: QD000P40CD; Serial: TP:1795
- Measurement SW: DASY52, Version 52.8 (8); SEMCAD X Version 14.6.10 (7331)

Pin=100mW/Area Scan (71x71x1): Interpolated grid: dx=10mm, dy=10mm
Maximum value of SAR (interpolated) = 20.8 W/kg

Pin=100mW/Zoom Scan (7x7x7)/Cube 0: Measurement grid: dx=4mm, dy=4mm, dz=1.4mm
Reference Value = 48.50 V/m; Power Drift = 0.16 dB
Peak SAR (extrapolated) = 37.3 W/kg
SAR(1 g) = 8.21 W/kg; SAR(10 g) = 2.31 W/kg
Maximum value of SAR (measured) = 20.7 W/kg



System Check_Head_750MHz

DUT: D750V3-SN:1099

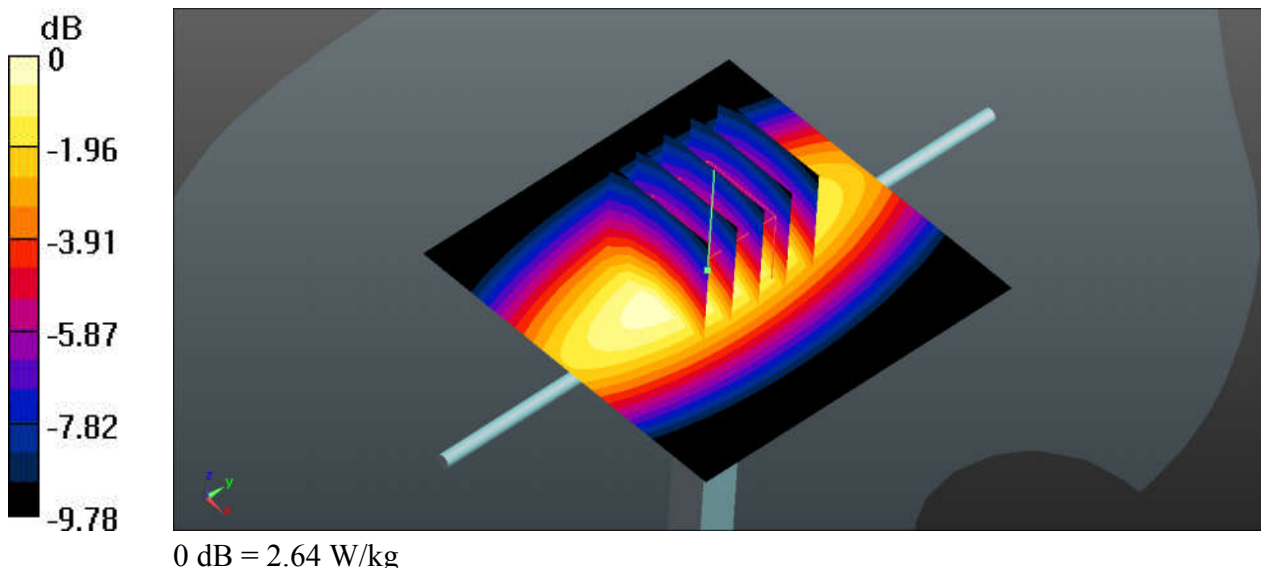
Communication System: UID 0, CW (0); Frequency: 750 MHz; Duty Cycle: 1:1
Medium: HSL_750_190921 Medium parameters used: $f = 750$ MHz; $\sigma = 0.881$ S/m; $\epsilon_r = 40.783$; $\rho = 1000$ kg/m³
Ambient Temperature : 23.6 °C; Liquid Temperature : 22.4 °C

DASY5 Configuration:

- Probe: EX3DV4 - SN3819; ConvF(10, 10, 10); Calibrated: 2019.03.01;
- Sensor-Surface: 2mm (Mechanical Surface Detection)
- Electronics: DAE4 Sn715; Calibrated: 2019.01.23
- Phantom: SAM (Front) with CRP v5.0; Type: QD000P40CD; Serial: TP:1795
- Measurement SW: DASY52, Version 52.8 (8); SEMCAD X Version 14.6.10 (7331)

Pin=250mW/Area Scan (61x61x1): Interpolated grid: dx=15mm, dy=15mm
Maximum value of SAR (interpolated) = 2.63 W/kg

Pin=250mW/Zoom Scan (5x5x7)/Cube 0: Measurement grid: dx=8mm, dy=8mm, dz=5mm
Reference Value = 55.90 V/m; Power Drift = 0.08 dB
Peak SAR (extrapolated) = 3.04 W/kg
SAR(1 g) = 2.14 W/kg; SAR(10 g) = 1.43 W/kg
Maximum value of SAR (measured) = 2.64 W/kg



System Check_Head_835MHz

DUT: D835V2-SN:4d162

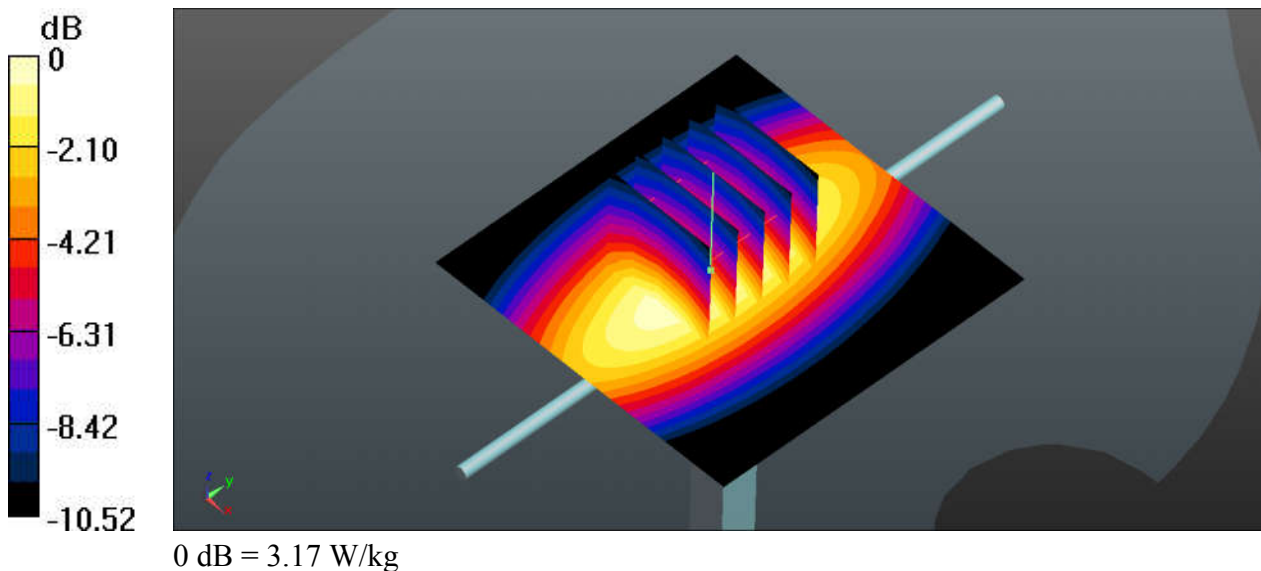
Communication System: UID 0, CW (0); Frequency: 835 MHz; Duty Cycle: 1:1
Medium: HSL_835_190921 Medium parameters used: $f = 835 \text{ MHz}$; $\sigma = 0.929 \text{ S/m}$; $\epsilon_r = 41.793$; $\rho = 1000 \text{ kg/m}^3$
Ambient Temperature : $23.5 \text{ }^\circ\text{C}$; Liquid Temperature : $22.6 \text{ }^\circ\text{C}$

DASY5 Configuration:

- Probe: EX3DV4 - SN3819; ConvF(9.57, 9.57, 9.57); Calibrated: 2019.03.01;
- Sensor-Surface: 2mm (Mechanical Surface Detection)
- Electronics: DAE4 Sn715; Calibrated: 2019.01.23
- Phantom: SAM (Front) with CRP v5.0; Type: QD000P40CD; Serial: TP:1795
- Measurement SW: DASY52, Version 52.8 (8); SEMCAD X Version 14.6.10 (7331)

Pin=250mW/Area Scan (61x61x1): Interpolated grid: $dx=15\text{mm}$, $dy=15\text{mm}$
Maximum value of SAR (interpolated) = 3.18 W/kg

Pin=250mW/Zoom Scan (5x5x7)/Cube 0: Measurement grid: $dx=8\text{mm}$, $dy=8\text{mm}$, $dz=5\text{mm}$
Reference Value = 59.50 V/m ; Power Drift = 0.07 dB
Peak SAR (extrapolated) = 3.69 W/kg
SAR(1 g) = 2.53 W/kg ; SAR(10 g) = 1.67 W/kg
Maximum value of SAR (measured) = 3.17 W/kg



System Check_Head_1750MHz

DUT: D1750V2-SN:1090

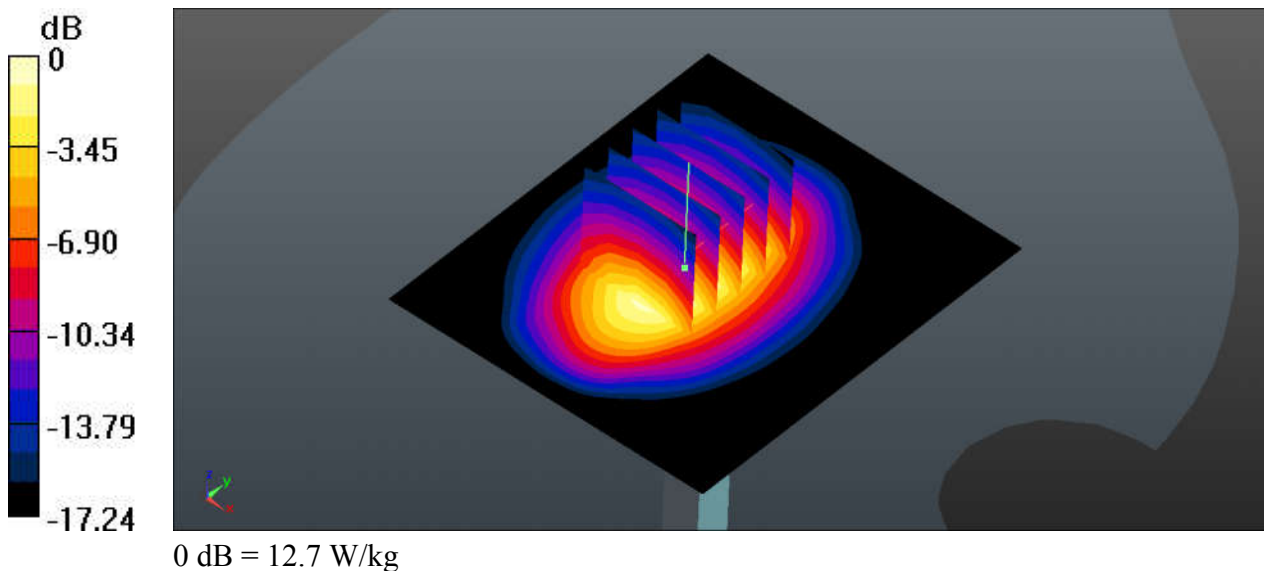
Communication System: UID 0, CW; Frequency: 1750 MHz; Duty Cycle: 1:1
Medium: HSL_1750_190920 Medium parameters used: $f = 1750$ MHz; $\sigma = 1.382$ S/m; $\epsilon_r = 41.56$; $\rho = 1000$ kg/m³
Ambient Temperature : 23.7 °C; Liquid Temperature : 22.5 °C

DASY5 Configuration:

- Probe: EX3DV4 - SN3819; ConvF(8.54, 8.54, 8.54); Calibrated: 2019.03.01;
- Sensor-Surface: 2mm (Mechanical Surface Detection)
- Electronics: DAE4 Sn715; Calibrated: 2019.01.23
- Phantom: SAM (Front) with CRP v5.0; Type: QD000P40CD; Serial: TP:1795
- Measurement SW: DASY52, Version 52.8 (8); SEMCAD X Version 14.6.10 (7331)

Pin=250mW/Area Scan (61x71x1): Interpolated grid: dx=15mm, dy=15mm
Maximum value of SAR (interpolated) = 13.2 W/kg

Pin=250mW/Zoom Scan (5x5x7)/Cube 0: Measurement grid: dx=8mm, dy=8mm, dz=5mm
Reference Value = 90.01 V/m; Power Drift = 0.14 dB
Peak SAR (extrapolated) = 16.3 W/kg
SAR(1 g) = 9.06 W/kg; SAR(10 g) = 4.84 W/kg
Maximum value of SAR (measured) = 12.7 W/kg



System Check_Head_1900MHz

DUT:D1900V2-SN:5d182

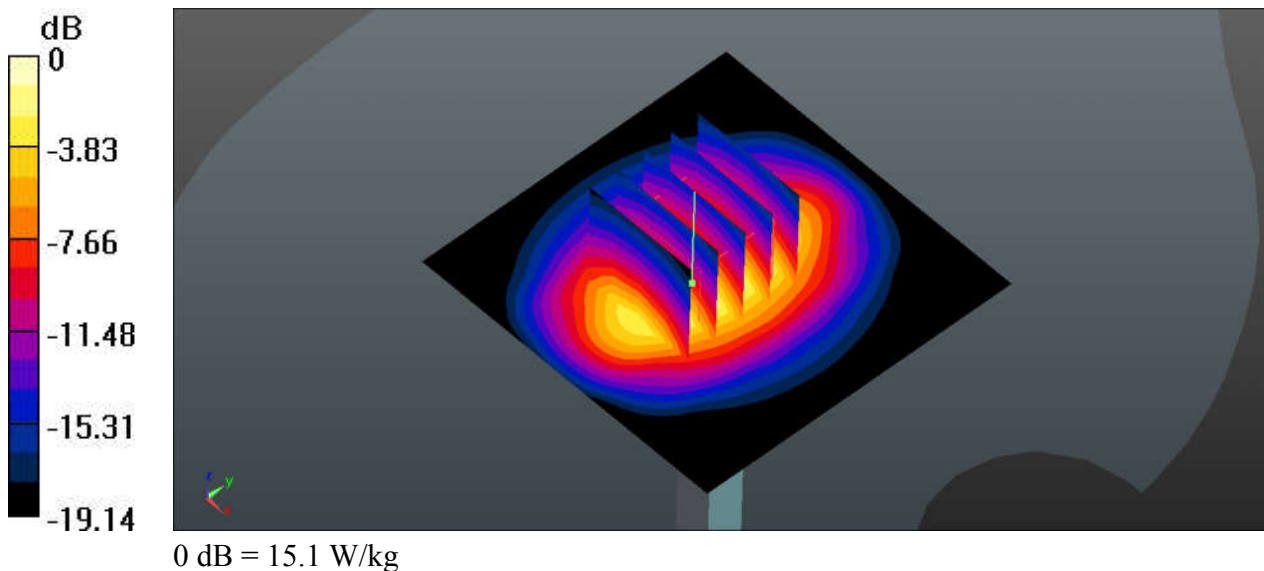
Communication System: UID 0, CW; Frequency: 1900 MHz; Duty Cycle: 1:1
Medium: HSL_1900_190920 Medium parameters used: $f = 1900$ MHz; $\sigma = 1.455$ S/m; $\epsilon_r = 40.068$;
 $\rho = 1000$ kg/m³
Ambient Temperature : 23.6 °C ; Liquid Temperature : 22.7 °C

DASY5 Configuration:

- Probe: EX3DV4 - SN3819; ConvF(8.27, 8.27, 8.27); Calibrated: 2019.03.01;
- Sensor-Surface: 2mm (Mechanical Surface Detection)
- Electronics: DAE4 Sn715; Calibrated: 2019.01.23
- Phantom: SAM (Front) with CRP v5.0; Type: QD000P40CD; Serial: TP:1795
- Measurement SW: DASY52, Version 52.8 (8); SEMCAD X Version 14.6.10 (7331)

Pin=250mW/Area Scan (61x61x1): Interpolated grid: dx=15mm, dy=15mm
Maximum value of SAR (interpolated) = 15.5 W/kg

Pin=250mW/Zoom Scan (5x5x7)/Cube 0: Measurement grid: dx=8mm, dy=8mm, dz=5mm
Reference Value = 102.1 V/m; Power Drift = 0.03 dB
Peak SAR (extrapolated) = 19.9 W/kg
SAR(1 g) = 10.4 W/kg; SAR(10 g) = 5.3 W/kg
Maximum value of SAR (measured) = 15.1 W/kg



System Check_Head_2300MHz

DUT: D2300V2-SN:1056

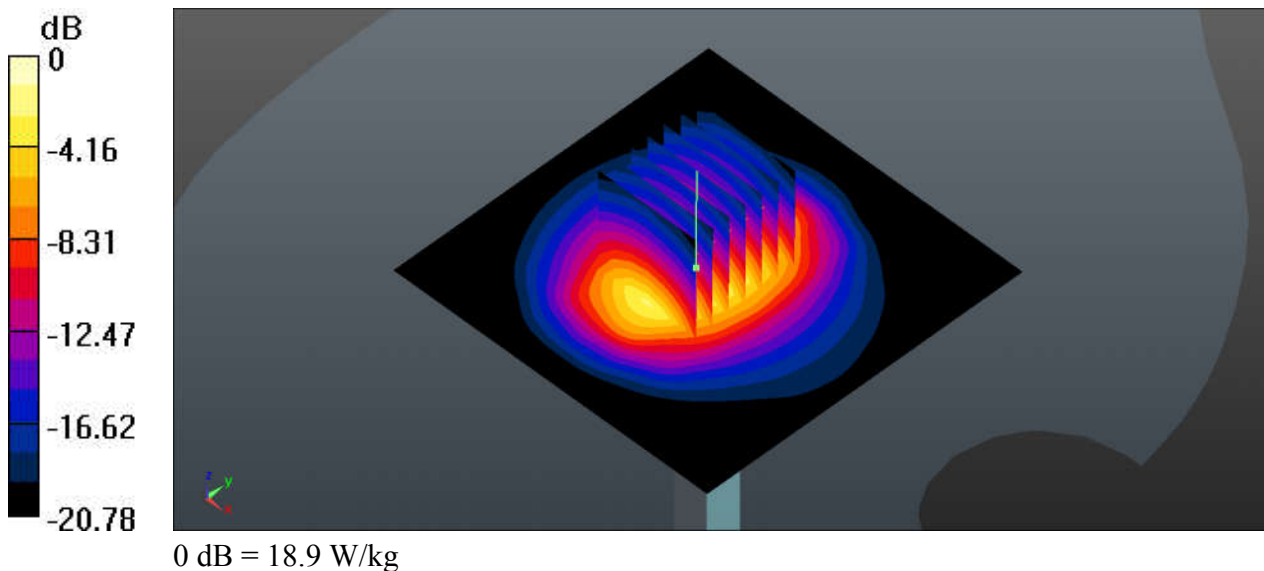
Communication System: UID 0, CW (0); Frequency: 2300 MHz; Duty Cycle: 1:1
Medium: HSL_2300_190920 Medium parameters used: $f = 2300$ MHz; $\sigma = 1.67$ S/m; $\epsilon_r = 38.754$; $\rho = 1000$ kg/m³
Ambient Temperature : 23.4 °C; Liquid Temperature : 22.5 °C

DASY5 Configuration:

- Probe: EX3DV4 - SN3819; ConvF(7.64, 7.64, 7.64); Calibrated: 2019.03.01;
- Sensor-Surface: 2mm (Mechanical Surface Detection)
- Electronics: DAE4 Sn715; Calibrated: 2019.01.23
- Phantom: SAM (Front) with CRP v5.0; Type: QD000P40CD; Serial: TP:1795
- Measurement SW: DASY52, Version 52.8 (8); SEMCAD X Version 14.6.10 (7331)

Pin=250mW/Area Scan (81x81x1): Interpolated grid: dx=12mm, dy=12mm
Maximum value of SAR (interpolated) = 18.9 W/kg

Pin=250mW/Zoom Scan (7x7x7)/Cube 0: Measurement grid: dx=5mm, dy=5mm, dz=5mm
Reference Value = 107.1 V/m; Power Drift = 0.09 dB
Peak SAR (extrapolated) = 25.5 W/kg
SAR(1 g) = 12.3 W/kg; SAR(10 g) = 5.81 W/kg
Maximum value of SAR (measured) = 18.9 W/kg



System Check_Head_2450MHz

DUT: D2450V2-SN:924

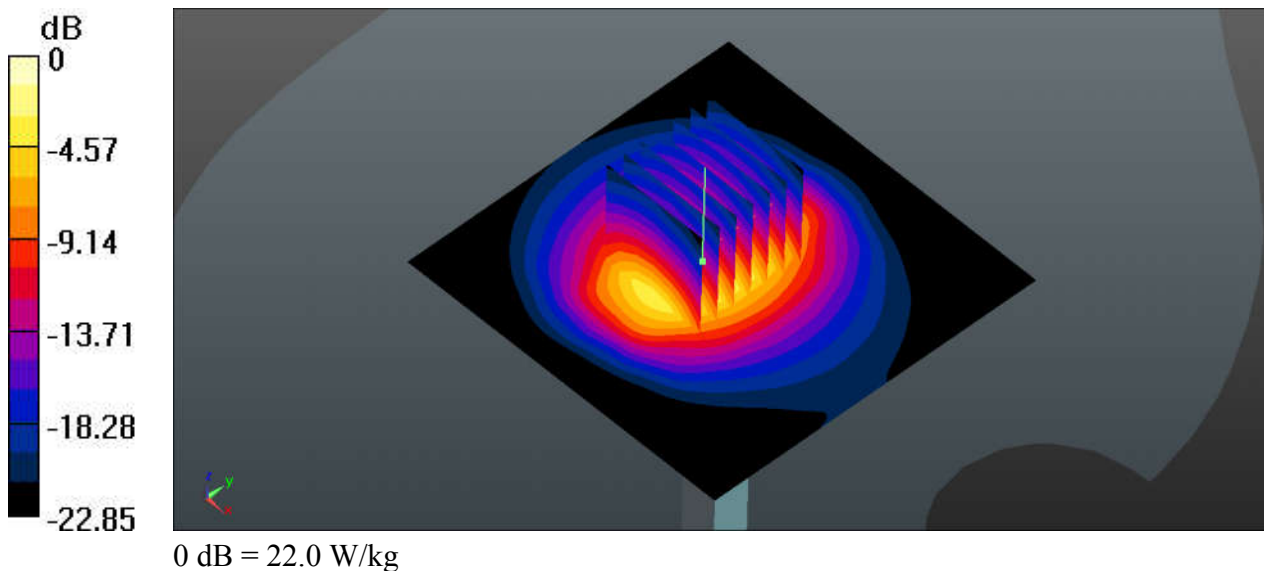
Communication System: UID 0, CW; Frequency: 2450 MHz; Duty Cycle: 1:1
Medium: HSL_2450_190920 Medium parameters used: $f = 2450$ MHz; $\sigma = 1.857$ S/m; $\epsilon_r = 37.67$; $\rho = 1000$ kg/m³
Ambient Temperature : 23.4 °C; Liquid Temperature : 22.6 °C

DASY5 Configuration:

- Probe: EX3DV4 - SN3819; ConvF(7.21, 7.21, 7.21); Calibrated: 2019.03.01;
- Sensor-Surface: 2mm (Mechanical Surface Detection)
- Electronics: DAE4 Sn715; Calibrated: 2019.01.23
- Phantom: SAM (Front) with CRP v5.0; Type: QD000P40CD; Serial: TP:1795
- Measurement SW: DASY52, Version 52.8 (8); SEMCAD X Version 14.6.10 (7331)

Pin=250mW/Area Scan (81x81x1): Interpolated grid: dx=12mm, dy=12mm
Maximum value of SAR (interpolated) = 21.7 W/kg

Pin=250mW/Zoom Scan (7x7x7)/Cube 0: Measurement grid: dx=5mm, dy=5mm, dz=5mm
Reference Value = 86.23 V/m; Power Drift = 0.18 dB
Peak SAR (extrapolated) = 30.6 W/kg
SAR(1 g) = 14 W/kg; SAR(10 g) = 6.35 W/kg
Maximum value of SAR (measured) = 22.0 W/kg



System Check_Head_2450MHz

DUT: D2450V2-SN:924

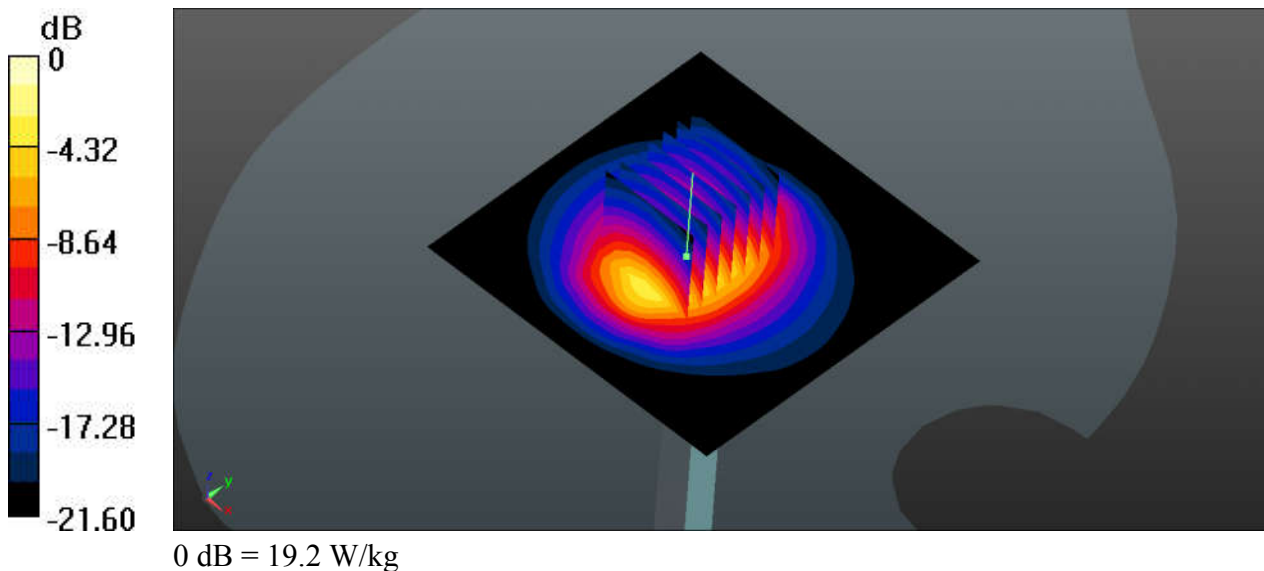
Communication System: UID 0, CW; Frequency: 2450 MHz; Duty Cycle: 1:1
Medium: HSL_2450_191008 Medium parameters used: $f = 2450$ MHz; $\sigma = 1.732$ S/m; $\epsilon_r = 40.764$;
 $\rho = 1000$ kg/m³
Ambient Temperature : 23.6 °C ; Liquid Temperature : 22.6 °C

DASY5 Configuration:

- Probe: EX3DV4 - SN3819; ConvF(7.21, 7.21, 7.21); Calibrated: 2019.03.01;
- Sensor-Surface: 2mm (Mechanical Surface Detection)
- Electronics: DAE4 Sn715; Calibrated: 2019.01.23
- Phantom: SAM (Front) with CRP v5.0; Type: QD000P40CD; Serial: TP:1795
- Measurement SW: DASY52, Version 52.8 (8); SEMCAD X Version 14.6.10 (7331)

Pin=250mW/Area Scan (81x81x1): Interpolated grid: dx=12mm, dy=12mm
Maximum value of SAR (interpolated) = 19.2 W/kg

Pin=250mW/Zoom Scan (7x7x7)/Cube 0: Measurement grid: dx=5mm, dy=5mm, dz=5mm
Reference Value = 88.30 V/m; Power Drift = 0.10 dB
Peak SAR (extrapolated) = 25.8 W/kg
SAR(1 g) = 12.4 W/kg; SAR(10 g) = 5.75 W/kg
Maximum value of SAR (measured) = 19.2 W/kg



System Check_Head_2600MHz

DUT: D2600V2-SN:1070

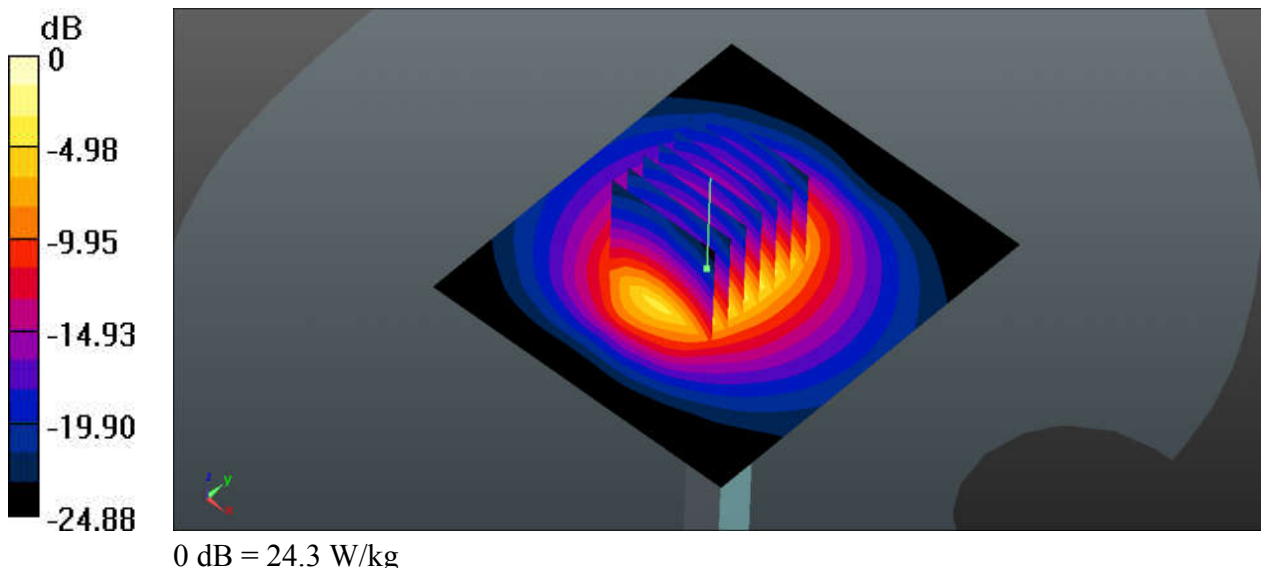
Communication System: UID 0, CW (0); Frequency: 2600 MHz; Duty Cycle: 1:1
Medium: HSL_2600_190920 Medium parameters used: $f = 2600$ MHz; $\sigma = 2.055$ S/m; $\epsilon_r = 38.321$;
 $\rho = 1000$ kg/m³
Ambient Temperature : 23.5 °C; Liquid Temperature : 22.4 °C

DASY5 Configuration:

- Probe: EX3DV4 - SN3819; ConvF(7.06, 7.06, 7.06); Calibrated: 2019.03.01;
- Sensor-Surface: 2mm (Mechanical Surface Detection)
- Electronics: DAE4 Sn715; Calibrated: 2019.01.23
- Phantom: SAM (Front) with CRP v5.0; Type: QD000P40CD; Serial: TP:1795
- Measurement SW: DASY52, Version 52.8 (8); SEMCAD X Version 14.6.10 (7331)

Pin=250mW/Area Scan (71x81x1): Interpolated grid: dx=12mm, dy=12mm
Maximum value of SAR (interpolated) = 25.1 W/kg

Pin=250mW/Zoom Scan (7x7x7)/Cube 0: Measurement grid: dx=5mm, dy=5mm, dz=5mm
Reference Value = 108.3 V/m; Power Drift = 0.12 dB
Peak SAR (extrapolated) = 35.0 W/kg
SAR(1 g) = 15.3 W/kg; SAR(10 g) = 6.65 W/kg
Maximum value of SAR (measured) = 24.3 W/kg



System Check_Head_3500MHz

DUT: D3500V2-SN:1037

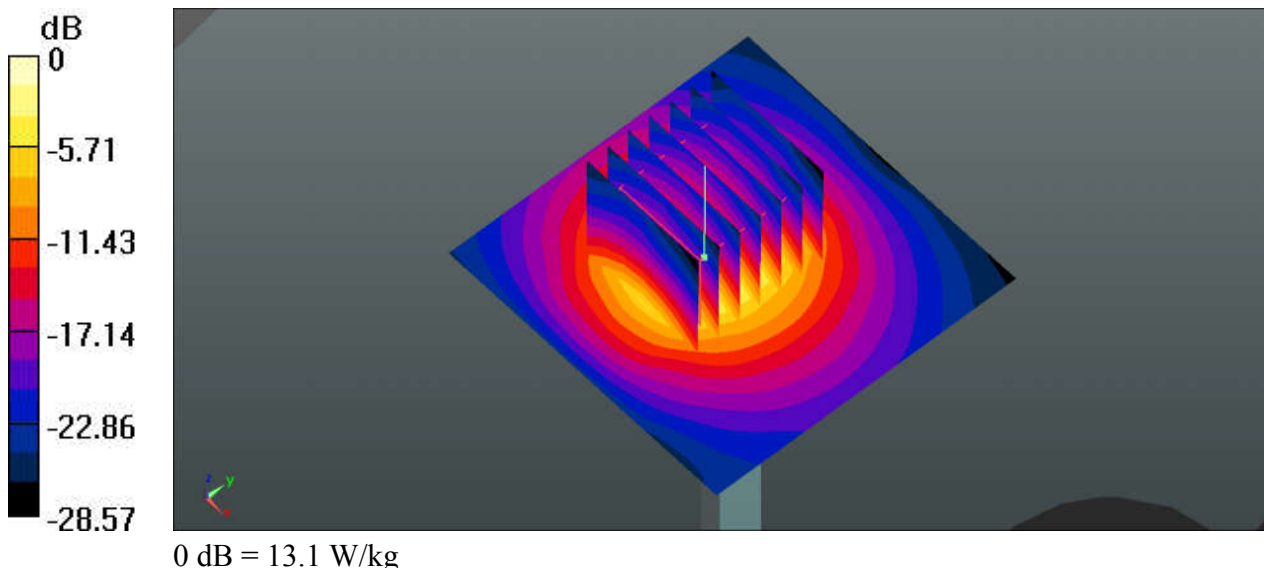
Communication System: UID 0, CW (0); Frequency: 3500 MHz; Duty Cycle: 1:1
Medium: HSL_3500-3700_190922 Medium parameters used: $f = 3500$ MHz; $\sigma = 2.909$ S/m; $\epsilon_r = 38.635$; $\rho = 1000$ kg/m³
Ambient Temperature : 23.3 °C ; Liquid Temperature : 22.5 °C

DASY5 Configuration:

- Probe: EX3DV4 - SN3819; ConvF(6.89, 6.89, 6.89); Calibrated: 2019.03.01;
- Sensor-Surface: 1.4mm (Mechanical Surface Detection)
- Electronics: DAE4 Sn715; Calibrated: 2019.01.23
- Phantom: SAM (Front) with CRP v5.0; Type: QD000P40CD; Serial: TP:1795
- Measurement SW: DASY52, Version 52.8 (8); SEMCAD X Version 14.6.10 (7331)

Pin=100mW/Area Scan (61x61x1): Interpolated grid: dx=12mm, dy=12mm
Maximum value of SAR (interpolated) = 12.7 W/kg

Pin=100mW/Zoom Scan (7x7x7)/Cube 0: Measurement grid: dx=5mm, dy=5mm, dz=1.4mm
Reference Value = 53.30 V/m; Power Drift = 0.14 dB
Peak SAR (extrapolated) = 18.3 W/kg
SAR(1 g) = 6.54 W/kg; SAR(10 g) = 2.47 W/kg
Maximum value of SAR (measured) = 13.1 W/kg



System Check_Head_3700MHz

DUT: D3700V2-SN:1008

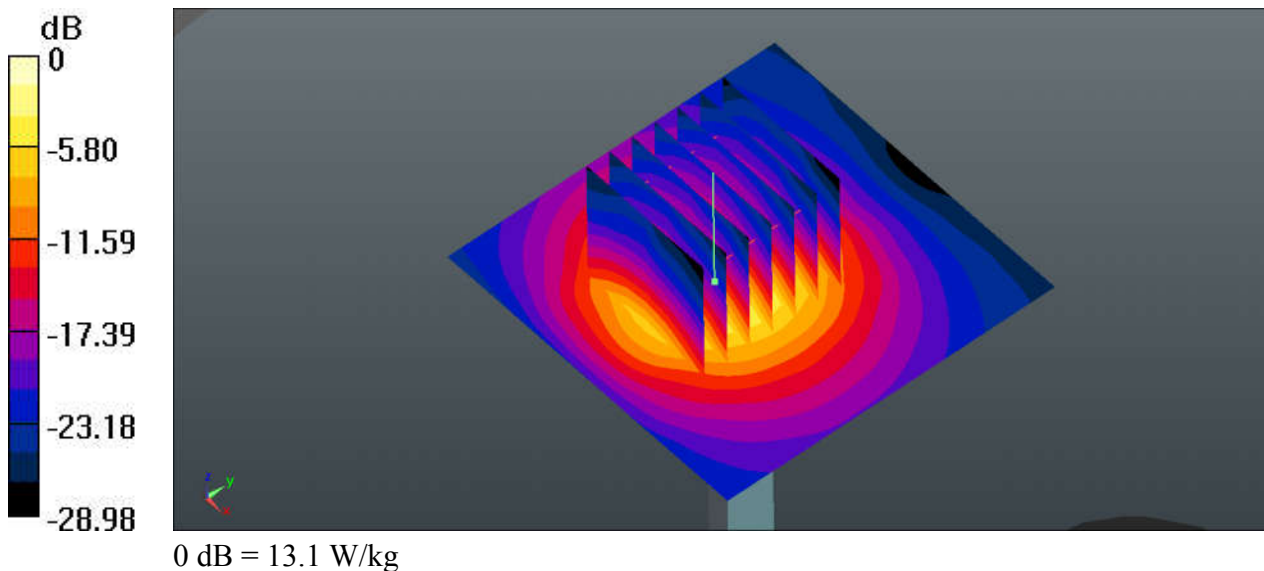
Communication System: UID 0, CW (0); Frequency: 3700 MHz; Duty Cycle: 1:1
Medium: HSL_3500-3700_190922 Medium parameters used: $f = 3700$ MHz; $\sigma = 3.054$ S/m; $\epsilon_r = 38.374$; $\rho = 1000$ kg/m³
Ambient Temperature : 23.3 °C ; Liquid Temperature : 22.5 °C

DASY5 Configuration:

- Probe: EX3DV4 - SN3819; ConvF(6.67, 6.67, 6.67); Calibrated: 2019.03.01;
- Sensor-Surface: 1.4mm (Mechanical Surface Detection)
- Electronics: DAE4 Sn715; Calibrated: 2019.01.23
- Phantom: SAM (Front) with CRP v5.0; Type: QD000P40CD; Serial: TP:1795
- Measurement SW: DASY52, Version 52.8 (8); SEMCAD X Version 14.6.10 (7331)

Pin=100mW/Area Scan (61x61x1): Interpolated grid: dx=12mm, dy=12mm
Maximum value of SAR (interpolated) = 13.2 W/kg

Pin=100mW/Zoom Scan (7x7x7)/Cube 0: Measurement grid: dx=5mm, dy=5mm, dz=1.4mm
Reference Value = 55.32 V/m; Power Drift = 0.19 dB
Peak SAR (extrapolated) = 18.8 W/kg
SAR(1 g) = 6.37 W/kg; SAR(10 g) = 2.34 W/kg
Maximum value of SAR (measured) = 13.1 W/kg



System Check_Head_5250MHz

DUT: D5GHzV2-SN:1128

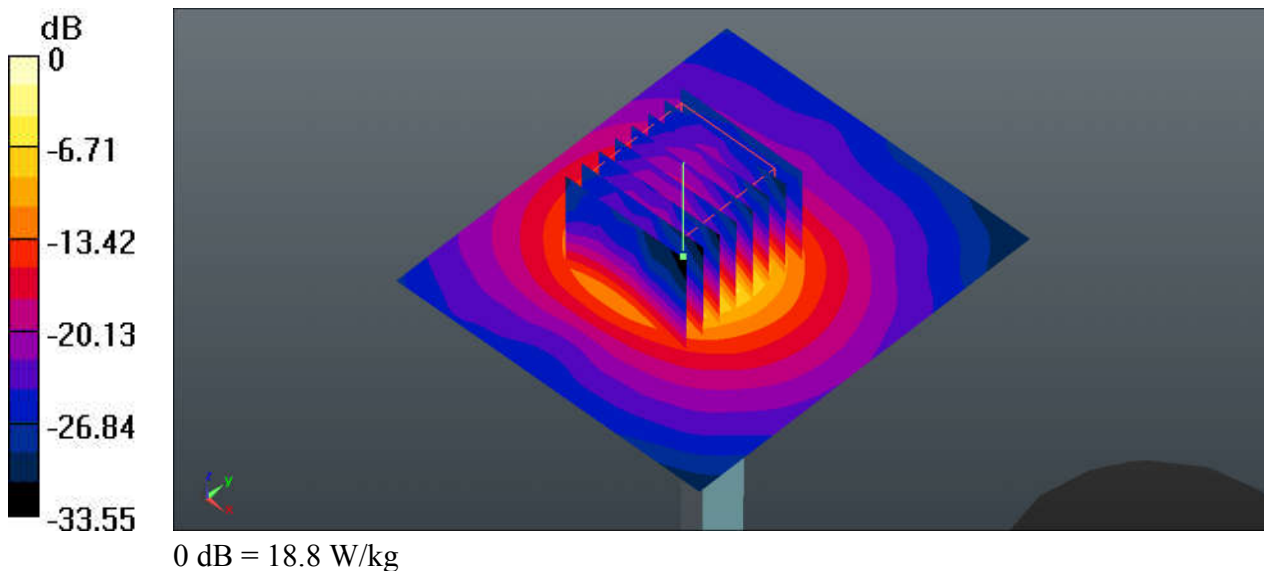
Communication System: UID 0, CW (0); Frequency: 5250 MHz; Duty Cycle: 1:1
Medium: HSL_5250_190922 Medium parameters used: $f = 5250$ MHz; $\sigma = 4.588$ S/m; $\epsilon_r = 36.661$;
 $\rho = 1000$ kg/m³
Ambient Temperature : 23.6 °C; Liquid Temperature : 22.8 °C

DASY5 Configuration:

- Probe: EX3DV4 - SN3819; ConvF(5.07, 5.07, 5.07); Calibrated: 2019.03.01;
- Sensor-Surface: 1.4mm (Mechanical Surface Detection)
- Electronics: DAE4 Sn715; Calibrated: 2019.01.23
- Phantom: SAM (Front) with CRP v5.0; Type: QD000P40CD; Serial: TP:1795
- Measurement SW: DASY52, Version 52.8 (8); SEMCAD X Version 14.6.10 (7331)

Pin=100mW/Area Scan (71x81x1): Interpolated grid: dx=10mm, dy=10mm
Maximum value of SAR (interpolated) = 19.1 W/kg

Pin=100mW/Zoom Scan (8x8x7)/Cube 0: Measurement grid: dx=4mm, dy=4mm, dz=1.4mm
Reference Value = 47.16 V/m; Power Drift = 0.13 dB
Peak SAR (extrapolated) = 30.4 W/kg
SAR(1 g) = 7.45 W/kg; SAR(10 g) = 2.15 W/kg
Maximum value of SAR (measured) = 18.8 W/kg



System Check_Head_5600MHz

DUT: D5GHzV2-SN:1128

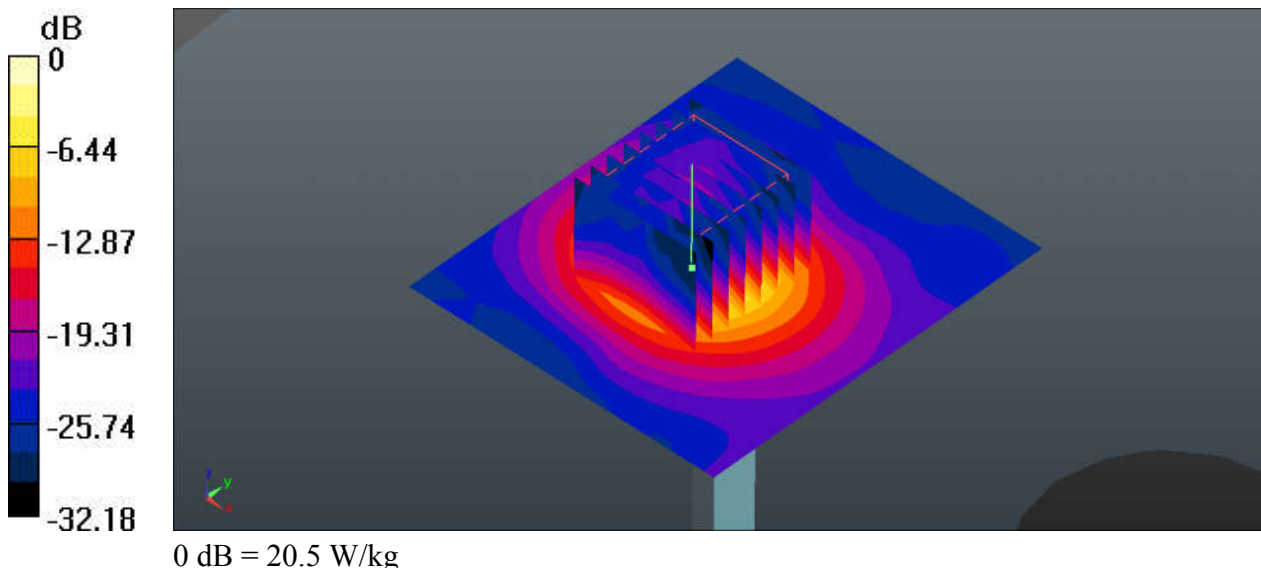
Communication System: UID 0, CW (0); Frequency: 5600 MHz; Duty Cycle: 1:1
Medium: HSL_5600_190922 Medium parameters used: $f = 5600$ MHz; $\sigma = 4.996$ S/m; $\epsilon_r = 36.13$; $\rho = 1000$ kg/m³
Ambient Temperature : 23.5 °C; Liquid Temperature : 22.7 °C

DASY5 Configuration:

- Probe: EX3DV4 - SN3819; ConvF(4.7, 4.7, 4.7); Calibrated: 2019.03.01;
- Sensor-Surface: 1.4mm (Mechanical Surface Detection)
- Electronics: DAE4 Sn715; Calibrated: 2019.01.23
- Phantom: SAM (Front) with CRP v5.0; Type: QD000P40CD; Serial: TP:1795
- Measurement SW: DASY52, Version 52.8 (8); SEMCAD X Version 14.6.10 (7331)

Pin=100mW/Area Scan (71x81x1): Interpolated grid: dx=10mm, dy=10mm
Maximum value of SAR (interpolated) = 21.4 W/kg

Pin=100mW/Zoom Scan (8x8x7)/Cube 0: Measurement grid: dx=4mm, dy=4mm, dz=1.4mm
Reference Value = 48.95 V/m; Power Drift = 0.09 dB
Peak SAR (extrapolated) = 35.2 W/kg
SAR(1 g) = 8.02 W/kg; SAR(10 g) = 2.31 W/kg
Maximum value of SAR (measured) = 20.5 W/kg



System Check_Head_5750MHz

DUT: D5GHzV2-SN:1128

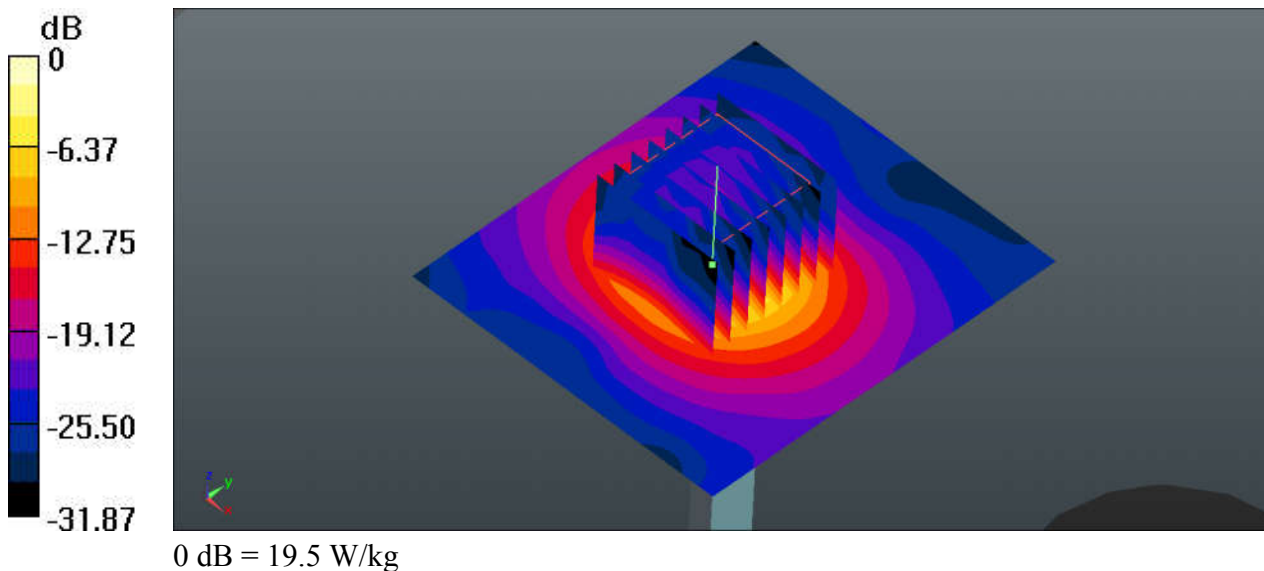
Communication System: UID 0, CW (0); Frequency: 5750 MHz; Duty Cycle: 1:1
Medium: HSL_5750_190922 Medium parameters used: $f = 5750$ MHz; $\sigma = 5.164$ S/m; $\epsilon_r = 35.867$;
 $\rho = 1000$ kg/m³
Ambient Temperature : 23.8 °C; Liquid Temperature : 22.5 °C

DASY5 Configuration:

- Probe: EX3DV4 - SN3819; ConvF(4.77, 4.77, 4.77); Calibrated: 2019.03.01;
- Sensor-Surface: 1.4mm (Mechanical Surface Detection)
- Electronics: DAE4 Sn715; Calibrated: 2019.01.23
- Phantom: SAM (Front) with CRP v5.0; Type: QD000P40CD; Serial: TP:1795
- Measurement SW: DASY52, Version 52.8 (8); SEMCAD X Version 14.6.10 (7331)

Pin=100mW/Area Scan (71x81x1): Interpolated grid: dx=10mm, dy=10mm
Maximum value of SAR (interpolated) = 20.2 W/kg

Pin=100mW/Zoom Scan (8x8x7)/Cube 0: Measurement grid: dx=4mm, dy=4mm, dz=1.4mm
Reference Value = 49.26 V/m; Power Drift = 0.14 dB
Peak SAR (extrapolated) = 34.3 W/kg
SAR(1 g) = 7.5 W/kg; SAR(10 g) = 2.15 W/kg
Maximum value of SAR (measured) = 19.5 W/kg





Appendix B. Plots of High SAR Measurement

The plots are shown as follows.

01_GSM850_GPRS(4 Tx slot)_Left Cheek_Ch251

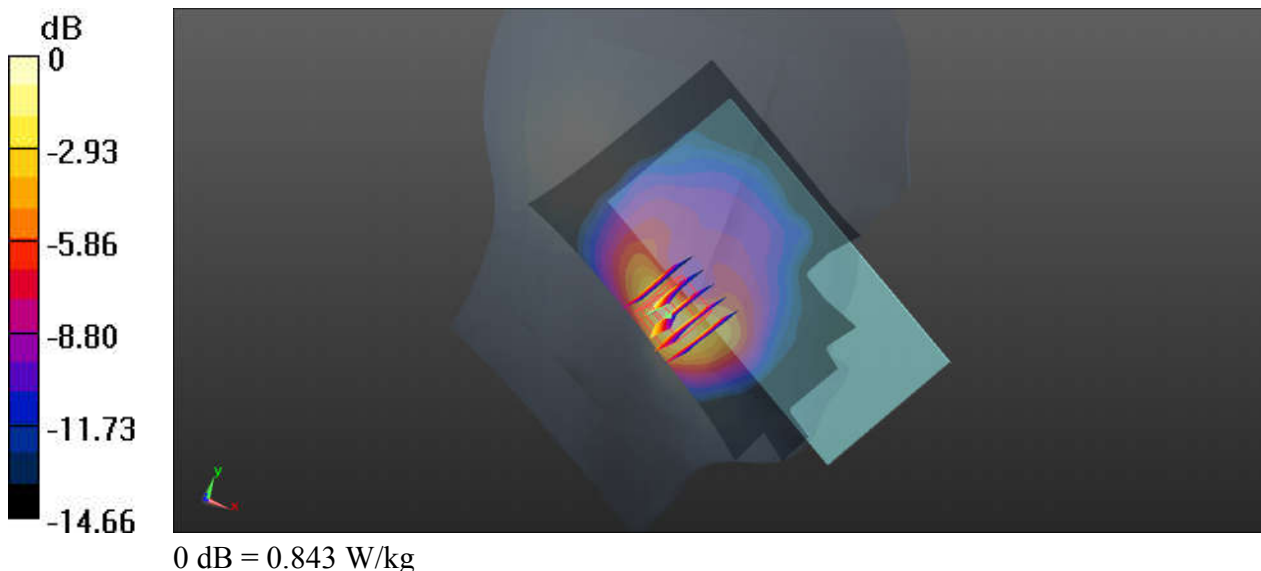
Communication System: UID 0, GPRS/EDGE12 (0); Frequency: 848.8 MHz; Duty Cycle: 1:2.08
Medium: HSL_835_190729 Medium parameters used: $f = 849$ MHz; $\sigma = 0.908$ S/m; $\epsilon_r = 40.637$; $\rho = 1000$ kg/m³
Ambient Temperature : 23.4 °C; Liquid Temperature : 22.7 °C

DASY5 Configuration:

- Probe: EX3DV4 - SN3819; ConvF(9.57, 9.57, 9.57); Calibrated: 2019.03.01;
- Sensor-Surface: 2mm (Mechanical Surface Detection)
- Electronics: DAE4 Sn715; Calibrated: 2019.01.23
- Phantom: SAM (Front) with CRP v5.0; Type: QD000P40CD; Serial: TP:1795
- Measurement SW: DASY52, Version 52.8 (8); SEMCAD X Version 14.6.10 (7331)

Ch251/Area Scan (71x121x1): Interpolated grid: dx=15mm, dy=15mm
Maximum value of SAR (interpolated) = 0.768 W/kg

Ch251/Zoom Scan (5x5x7)/Cube 0: Measurement grid: dx=8mm, dy=8mm, dz=5mm
Reference Value = 16.10 V/m; Power Drift = 0.19 dB
Peak SAR (extrapolated) = 1.02 W/kg
SAR(1 g) = 0.581 W/kg; SAR(10 g) = 0.308 W/kg
Maximum value of SAR (measured) = 0.843 W/kg



02_GSM1900_GPRS(3 Tx slots)_Right Cheek_Ch661

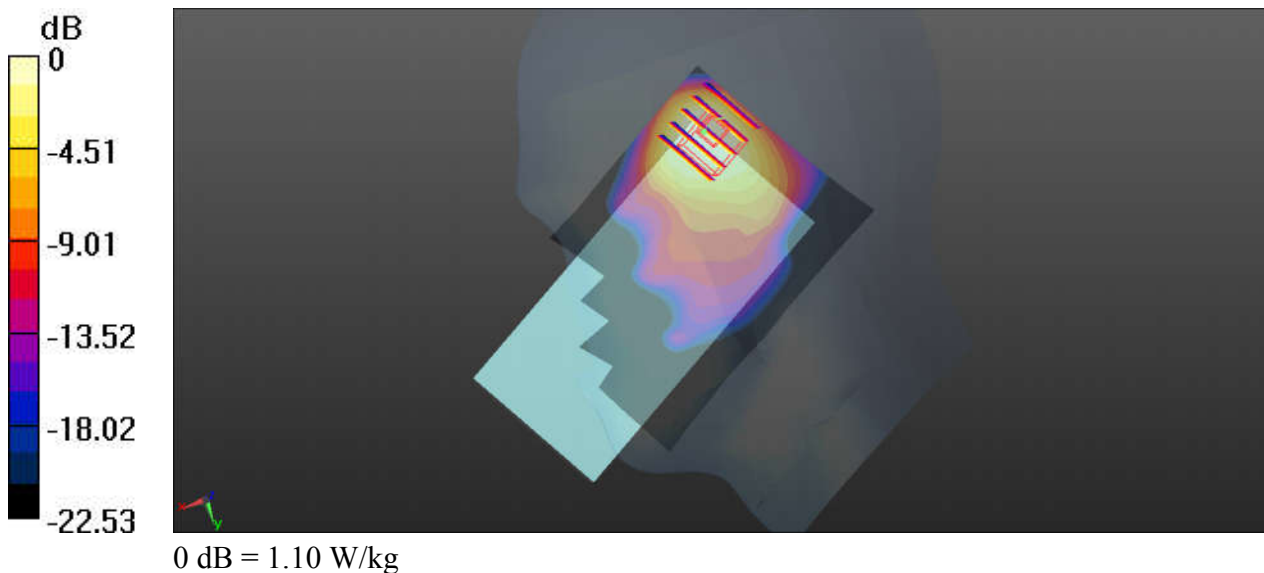
Communication System: UID 0, GPRS/EDGE11 (0); Frequency: 1880 MHz; Duty Cycle: 1:2.77
Medium: HSL_1900_190806 Medium parameters used: $f = 1880$ MHz; $\sigma = 1.435$ S/m; $\epsilon_r = 40.161$;
 $\rho = 1000$ kg/m³
Ambient Temperature : 23.7 °C; Liquid Temperature : 22.6 °C

DASY5 Configuration:

- Probe: EX3DV4 - SN3819; ConvF(8.27, 8.27, 8.27); Calibrated: 2019.03.01;
- Sensor-Surface: 2mm (Mechanical Surface Detection)
- Electronics: DAE4 Sn715; Calibrated: 2019.01.23
- Phantom: SAM (Front) with CRP v5.0; Type: QD000P40CD; Serial: TP:1795
- Measurement SW: DASY52, Version 52.8 (8); SEMCAD X Version 14.6.10 (7331)

Ch661/Area Scan (71x121x1): Interpolated grid: dx=15mm, dy=15mm
Maximum value of SAR (interpolated) = 1.57 W/kg

Ch661/Zoom Scan (5x5x7)/Cube 0: Measurement grid: dx=8mm, dy=8mm, dz=5mm
Reference Value = 19.28 V/m; Power Drift = -0.14 dB
Peak SAR (extrapolated) = 1.72 W/kg
SAR(1 g) = 0.789 W/kg; SAR(10 g) = 0.433 W/kg
Maximum value of SAR (measured) = 1.10 W/kg



03_WCDMA V_RMC 12.2Kbps_Left Cheek_Ch4233

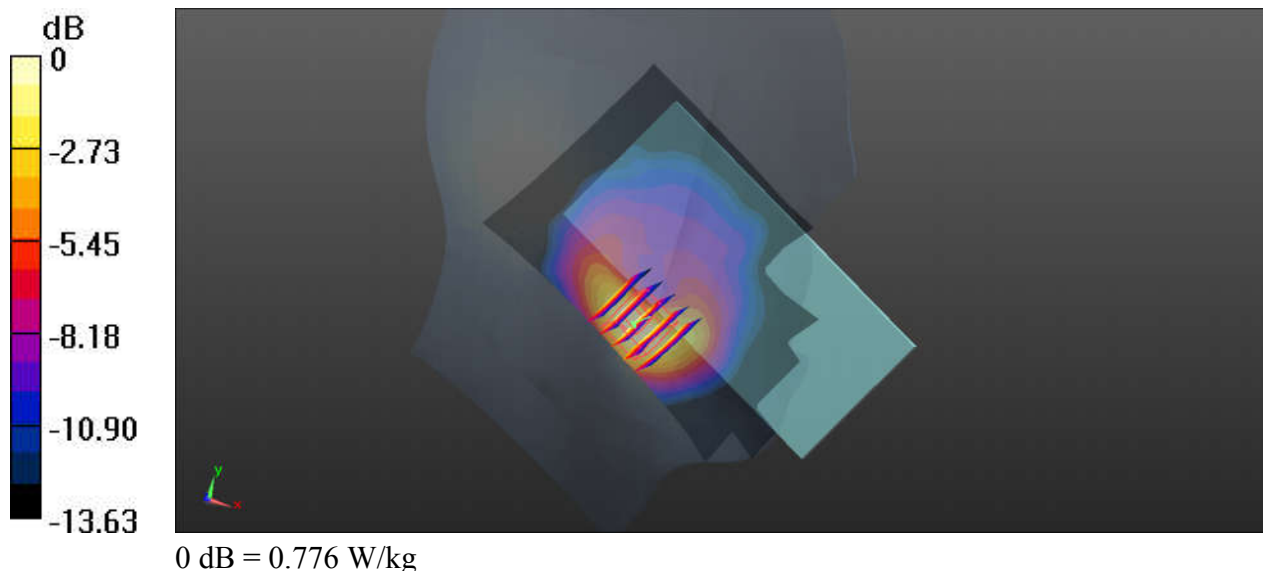
Communication System: UID 0, UMTS (0); Frequency: 846.6 MHz; Duty Cycle: 1:1
 Medium: HSL_835_190729 Medium parameters used: $f = 846.6 \text{ MHz}$; $\sigma = 0.906 \text{ S/m}$; $\epsilon_r = 40.672$;
 $\rho = 1000 \text{ kg/m}^3$
 Ambient Temperature : $23.4 \text{ }^\circ\text{C}$; Liquid Temperature : $22.7 \text{ }^\circ\text{C}$

DASY5 Configuration:

- Probe: EX3DV4 - SN3819; ConvF(9.57, 9.57, 9.57); Calibrated: 2019.03.01;
- Sensor-Surface: 2mm (Mechanical Surface Detection)
- Electronics: DAE4 Sn715; Calibrated: 2019.01.23
- Phantom: SAM (Front) with CRP v5.0; Type: QD000P40CD; Serial: TP:1795
- Measurement SW: DASY52, Version 52.8 (8); SEMCAD X Version 14.6.10 (7331)

Ch4233/Area Scan (71x121x1): Interpolated grid: $dx=15\text{mm}$, $dy=15\text{mm}$
 Maximum value of SAR (interpolated) = 0.836 W/kg

Ch4233/Zoom Scan (5x5x7)/Cube 0: Measurement grid: $dx=8\text{mm}$, $dy=8\text{mm}$, $dz=5\text{mm}$
 Reference Value = 17.56 V/m ; Power Drift = -0.06 dB
 Peak SAR (extrapolated) = 1.17 W/kg
SAR(1 g) = 0.627 W/kg ; SAR(10 g) = 0.348 W/kg
 Maximum value of SAR (measured) = 0.776 W/kg



04_WCDMA IV_RMC 12.2Kbps_Right Cheek_Ch1513

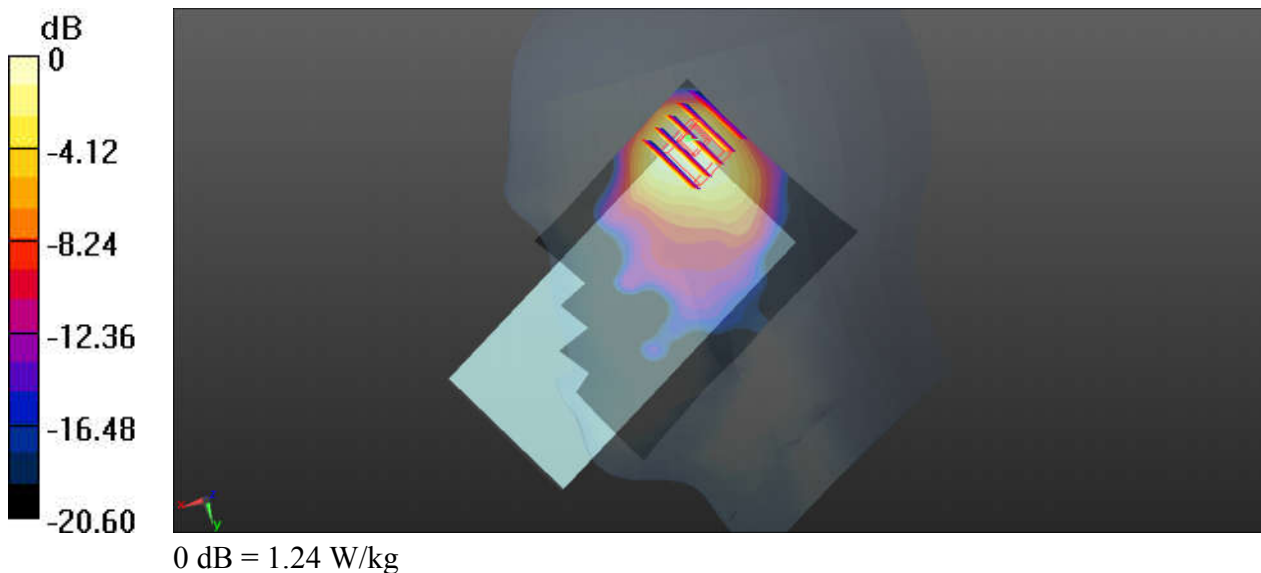
Communication System: UID 0, UMTS (0); Frequency: 1752.6 MHz; Duty Cycle: 1:1
Medium: HSL_1750_190807 Medium parameters used: $f = 1753 \text{ MHz}$; $\sigma = 1.386 \text{ S/m}$; $\epsilon_r = 39.878$;
 $\rho = 1000 \text{ kg/m}^3$
Ambient Temperature : 23.8 °C; Liquid Temperature : 22.4 °C

DASY5 Configuration:

- Probe: EX3DV4 - SN3819; ConvF(8.54, 8.54, 8.54); Calibrated: 2019.03.01;
- Sensor-Surface: 2mm (Mechanical Surface Detection)
- Electronics: DAE4 Sn715; Calibrated: 2019.01.23
- Phantom: SAM (Front) with CRP v5.0; Type: QD000P40CD; Serial: TP:1795
- Measurement SW: DASY52, Version 52.8 (8); SEMCAD X Version 14.6.10 (7331)

Ch1513/Area Scan (71x121x1): Interpolated grid: $dx=15\text{mm}$, $dy=15\text{mm}$
Maximum value of SAR (interpolated) = 1.81 W/kg

Ch1513/Zoom Scan (5x5x7)/Cube 0: Measurement grid: $dx=8\text{mm}$, $dy=8\text{mm}$, $dz=5\text{mm}$
Reference Value = 20.40 V/m; Power Drift = 0.03 dB
Peak SAR (extrapolated) = 1.69 W/kg
SAR(1 g) = 0.876 W/kg; SAR(10 g) = 0.488 W/kg
Maximum value of SAR (measured) = 1.24 W/kg



05_WCDMA II_RMC 12.2Kbps_Right Cheek_Ch9262

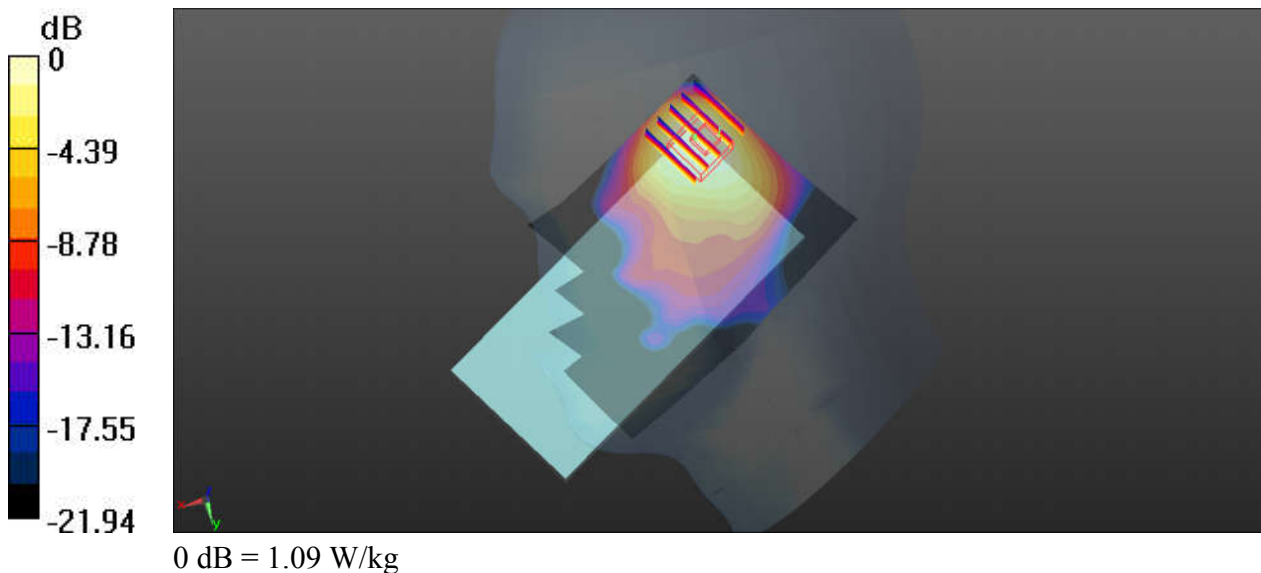
Communication System: UID 0, UMTS (0); Frequency: 1852.4 MHz; Duty Cycle: 1:1
Medium: HSL_1900_190806 Medium parameters used: $f = 1852.4$ MHz; $\sigma = 1.405$ S/m; $\epsilon_r = 40.286$; $\rho = 1000$ kg/m³
Ambient Temperature : 23.7 °C; Liquid Temperature : 22.6 °C

DASY5 Configuration:

- Probe: EX3DV4 - SN3819; ConvF(8.27, 8.27, 8.27); Calibrated: 2019.03.01;
- Sensor-Surface: 2mm (Mechanical Surface Detection)
- Electronics: DAE4 Sn715; Calibrated: 2019.01.23
- Phantom: SAM (Front) with CRP v5.0; Type: QD000P40CD; Serial: TP:1795
- Measurement SW: DASY52, Version 52.8 (8); SEMCAD X Version 14.6.10 (7331)

Ch9262/Area Scan (71x121x1): Interpolated grid: dx=15mm, dy=15mm
Maximum value of SAR (interpolated) = 1.62 W/kg

Ch9262/Zoom Scan (5x5x7)/Cube 0: Measurement grid: dx=8mm, dy=8mm, dz=5mm
Reference Value = 20.51 V/m; Power Drift = -0.08 dB
Peak SAR (extrapolated) = 1.66 W/kg
SAR(1 g) = 0.799 W/kg; SAR(10 g) = 0.447 W/kg
Maximum value of SAR (measured) = 1.09 W/kg



06_CDMA2000 BC0_RC3+SO55_Left Cheek_Ch777

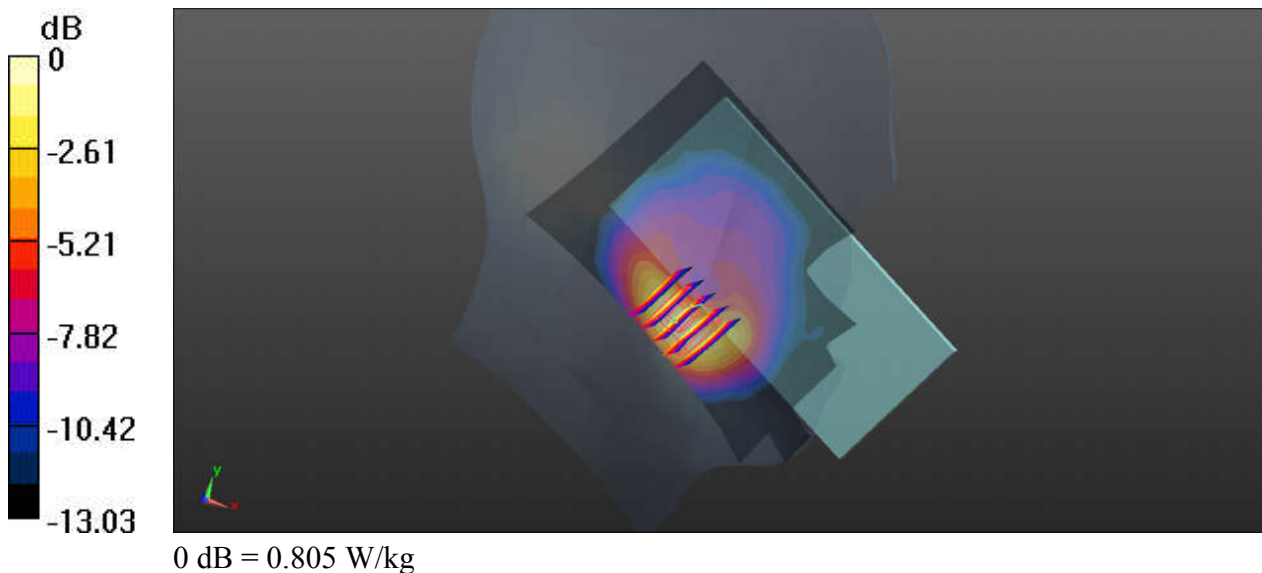
Communication System: UID 0, CDMA2000 (0); Frequency: 848.31 MHz; Duty Cycle: 1:1
Medium: HSL_835_190729 Medium parameters used: $f = 848.5$ MHz; $\sigma = 0.908$ S/m; $\epsilon_r = 40.645$;
 $\rho = 1000$ kg/m³
Ambient Temperature : 23.4 °C; Liquid Temperature : 22.7 °C

DASY5 Configuration:

- Probe: EX3DV4 - SN3819; ConvF(9.57, 9.57, 9.57); Calibrated: 2019.03.01;
- Sensor-Surface: 2mm (Mechanical Surface Detection)
- Electronics: DAE4 Sn715; Calibrated: 2019.01.23
- Phantom: SAM (Front) with CRP v5.0; Type: QD000P40CD; Serial: TP:1795
- Measurement SW: DASY52, Version 52.8 (8); SEMCAD X Version 14.6.10 (7331)

Ch777/Area Scan (71x121x1): Interpolated grid: dx=15mm, dy=15mm
Maximum value of SAR (interpolated) = 0.842 W/kg

Ch777/Zoom Scan (5x5x7)/Cube 0: Measurement grid: dx=8mm, dy=8mm, dz=5mm
Reference Value = 7.341 V/m; Power Drift = 0.09 dB
Peak SAR (extrapolated) = 1.23 W/kg
SAR(1 g) = 0.660 W/kg; SAR(10 g) = 0.365 W/kg
Maximum value of SAR (measured) = 0.805 W/kg



07_CDMA2000 BC10_RC3+SO55_Left Cheek_Ch580

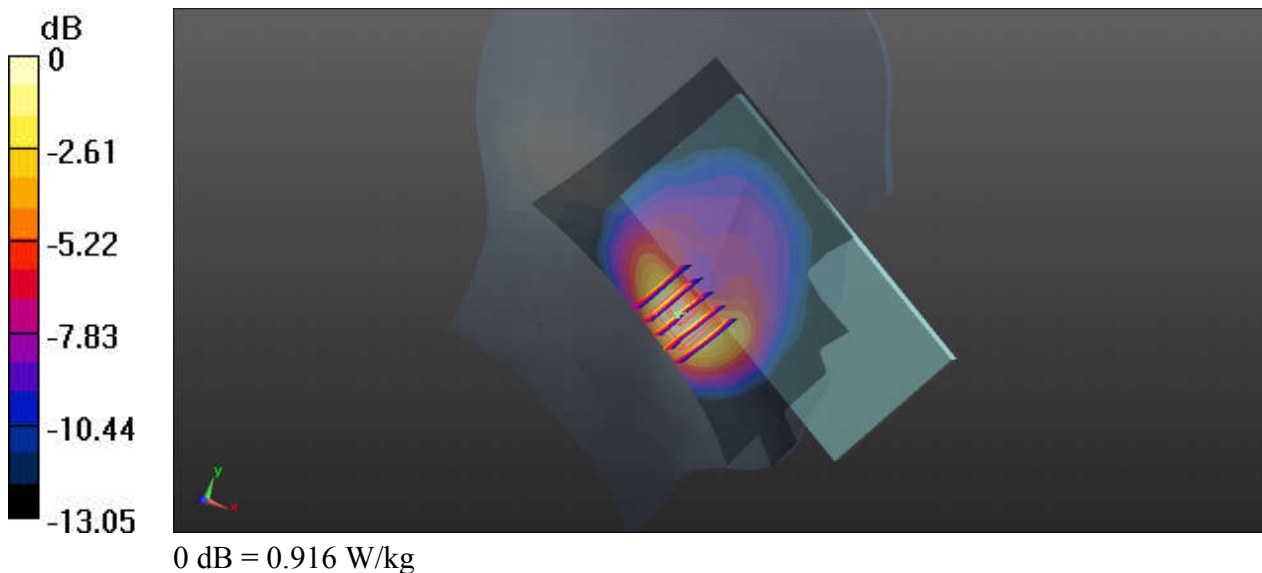
Communication System: UID 0, CDMA2000 (0); Frequency: 820.5 MHz; Duty Cycle: 1:1
Medium: HSL_835_190729 Medium parameters used: $f = 820.5$ MHz; $\sigma = 0.884$ S/m; $\epsilon_r = 40.916$;
 $\rho = 1000$ kg/m³
Ambient Temperature : 23.4 °C; Liquid Temperature : 22.7 °C

DASY5 Configuration:

- Probe: EX3DV4 - SN3819; ConvF(9.57, 9.57, 9.57); Calibrated: 2019.03.01;
- Sensor-Surface: 2mm (Mechanical Surface Detection)
- Electronics: DAE4 Sn715; Calibrated: 2019.01.23
- Phantom: SAM (Front) with CRP v5.0; Type: QD000P40CD; Serial: TP:1795
- Measurement SW: DASY52, Version 52.8 (8); SEMCAD X Version 14.6.10 (7331)

Ch580/Area Scan (71x121x1): Interpolated grid: dx=15mm, dy=15mm
Maximum value of SAR (interpolated) = 0.973 W/kg

Ch580/Zoom Scan (5x5x7)/Cube 0: Measurement grid: dx=8mm, dy=8mm, dz=5mm
Reference Value = 7.569 V/m; Power Drift = 0.08 dB
Peak SAR (extrapolated) = 1.35 W/kg
SAR(1 g) = 0.737 W/kg; SAR(10 g) = 0.411 W/kg
Maximum value of SAR (measured) = 0.916 W/kg



08_CDMA2000 BC1_RC3+SO55_Right Cheek_Ch600

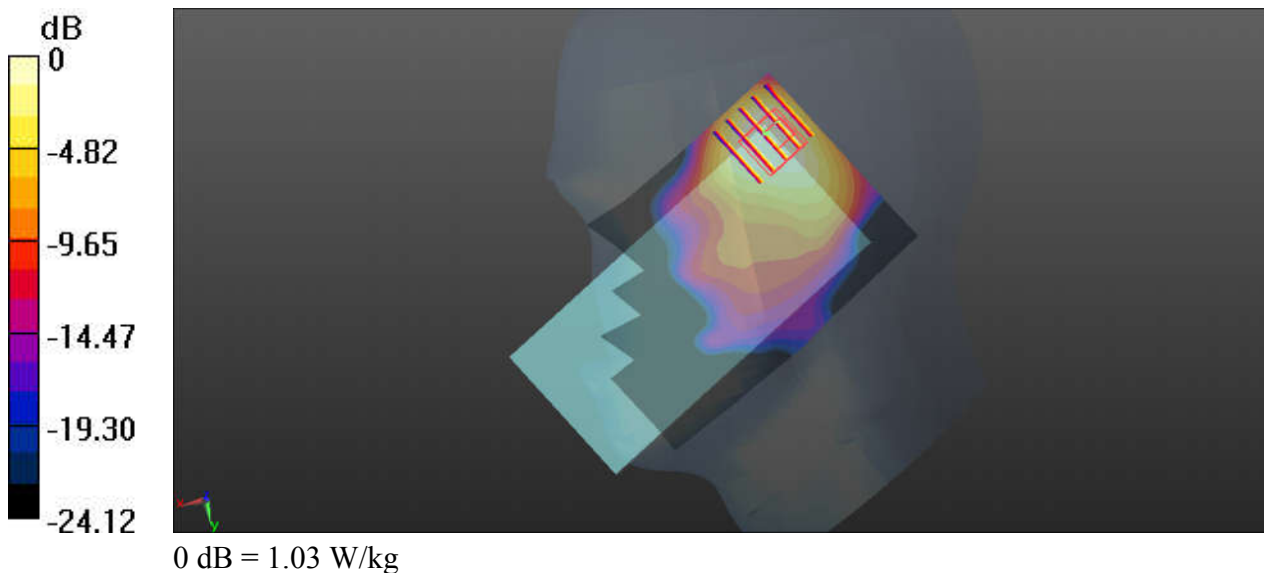
Communication System: UID 0, CDMA2000 (0); Frequency: 1880 MHz; Duty Cycle: 1:1
Medium: HSL_1900_190806 Medium parameters used: $f = 1880$ MHz; $\sigma = 1.435$ S/m; $\epsilon_r = 40.161$;
 $\rho = 1000$ kg/m³
Ambient Temperature : 23.7 °C; Liquid Temperature : 22.6 °C

DASY5 Configuration:

- Probe: EX3DV4 - SN3819; ConvF(8.27, 8.27, 8.27); Calibrated: 2019.03.01;
- Sensor-Surface: 2mm (Mechanical Surface Detection)
- Electronics: DAE4 Sn715; Calibrated: 2019.01.23
- Phantom: SAM (Front) with CRP v5.0; Type: QD000P40CD; Serial: TP:1795
- Measurement SW: DASY52, Version 52.8 (8); SEMCAD X Version 14.6.10 (7331)

Ch600/Area Scan (71x121x1): Interpolated grid: dx=15mm, dy=15mm
Maximum value of SAR (interpolated) = 1.45 W/kg

Ch600/Zoom Scan (5x5x7)/Cube 0: Measurement grid: dx=8mm, dy=8mm, dz=5mm
Reference Value = 19.77 V/m; Power Drift = 0.03 dB
Peak SAR (extrapolated) = 1.45 W/kg
SAR(1 g) = 0.706 W/kg; SAR(10 g) = 0.405 W/kg
Maximum value of SAR (measured) = 1.03 W/kg



09_LTE Band 71_20M_QPSK_1RB_0Offset_Left Cheek_Ch133322

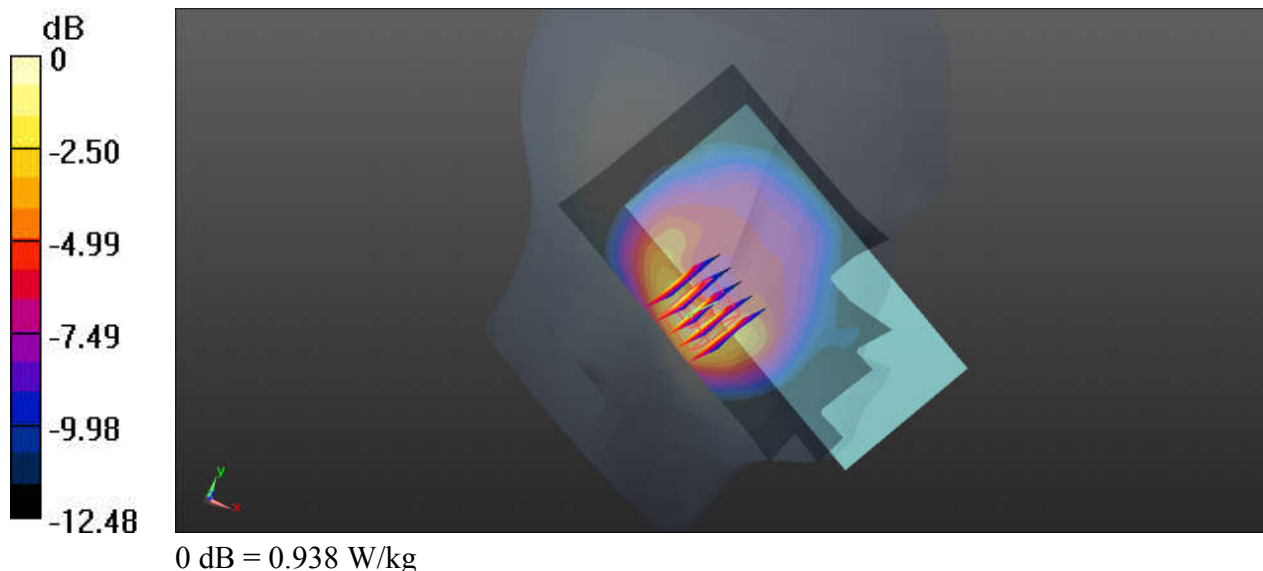
Communication System: UID 0, LTE (0); Frequency: 683 MHz; Duty Cycle: 1:1
 Medium: HSL_750_190728 Medium parameters used: $f = 683 \text{ MHz}$; $\sigma = 0.855 \text{ S/m}$; $\epsilon_r = 42.31$; $\rho = 1000 \text{ kg/m}^3$
 Ambient Temperature : 23.5 °C; Liquid Temperature : 22.6 °C

DASY5 Configuration:

- Probe: EX3DV4 - SN3819; ConvF(10, 10, 10); Calibrated: 2019.03.01;
- Sensor-Surface: 2mm (Mechanical Surface Detection)
- Electronics: DAE4 Sn715; Calibrated: 2019.01.23
- Phantom: SAM (Front) with CRP v5.0; Type: QD000P40CD; Serial: TP:1795
- Measurement SW: DASY52, Version 52.8 (8); SEMCAD X Version 14.6.10 (7331)

Ch133322/Area Scan (71x121x1): Interpolated grid: $dx=15\text{mm}$, $dy=15\text{mm}$
 Maximum value of SAR (interpolated) = 0.938 W/kg

Ch133322/Zoom Scan (5x5x7)/Cube 0: Measurement grid: $dx=8\text{mm}$, $dy=8\text{mm}$, $dz=5\text{mm}$
 Reference Value = 10.05 V/m; Power Drift = 0.09 dB
 Peak SAR (extrapolated) = 1.34 W/kg
SAR(1 g) = 0.721 W/kg; SAR(10 g) = 0.407 W/kg
 Maximum value of SAR (measured) = 0.934 W/kg



10_LTE Band 12_10M_QPSK_25RB_0Offset_Left Cheek_Ch23095

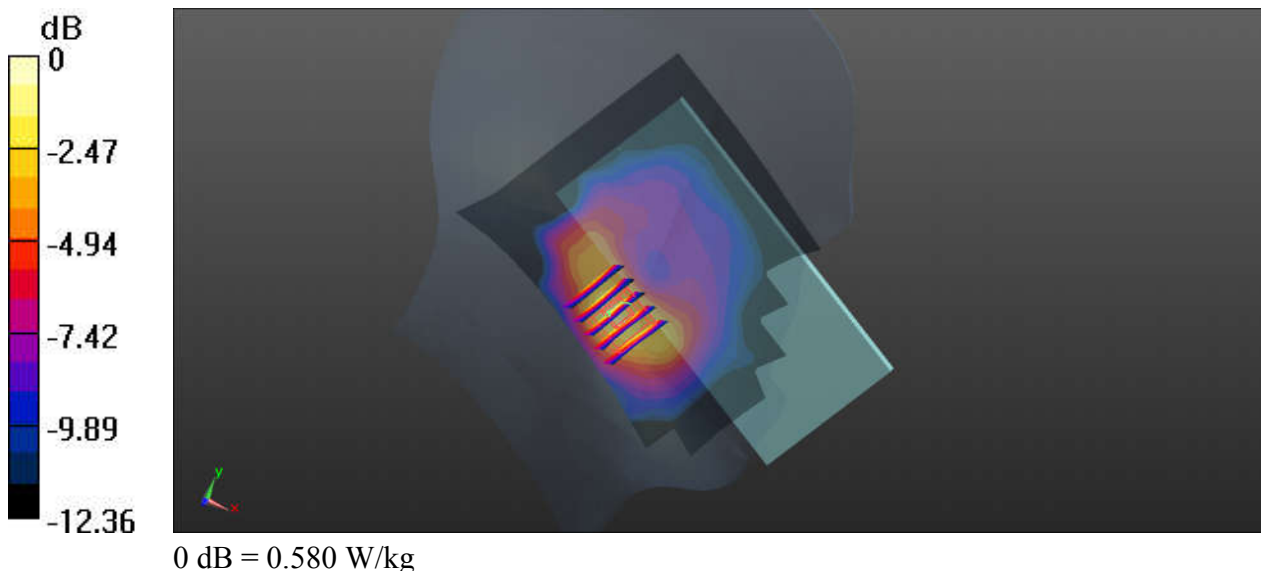
Communication System: UID 0, LTE (0); Frequency: 707.5 MHz; Duty Cycle: 1:1
Medium: HSL_750_190728 Medium parameters used: $f = 707.5$ MHz; $\sigma = 0.858$ S/m; $\epsilon_r = 41.719$;
 $\rho = 1000$ kg/m³
Ambient Temperature : 23.5 °C; Liquid Temperature : 22.6 °C

DASY5 Configuration:

- Probe: EX3DV4 - SN3819; ConvF(10, 10, 10); Calibrated: 2019.03.01;
- Sensor-Surface: 2mm (Mechanical Surface Detection)
- Electronics: DAE4 Sn715; Calibrated: 2019.01.23
- Phantom: SAM (Front) with CRP v5.0; Type: QD000P40CD; Serial: TP:1795
- Measurement SW: DASY52, Version 52.8 (8); SEMCAD X Version 14.6.10 (7331)

Ch23095/Area Scan (81x121x1): Interpolated grid: dx=15mm, dy=15mm
Maximum value of SAR (interpolated) = 0.447 W/kg

Ch23095/Zoom Scan (5x5x7)/Cube 0: Measurement grid: dx=8mm, dy=8mm, dz=5mm
Reference Value = 7.996 V/m; Power Drift = 0.12 dB
Peak SAR (extrapolated) = 0.847 W/kg
SAR(1 g) = 0.442 W/kg; SAR(10 g) = 0.244 W/kg
Maximum value of SAR (measured) = 0.580 W/kg



11_LTE Band 13_10M_QPSK_25RB_0Offset_Left Cheek_Ch23230

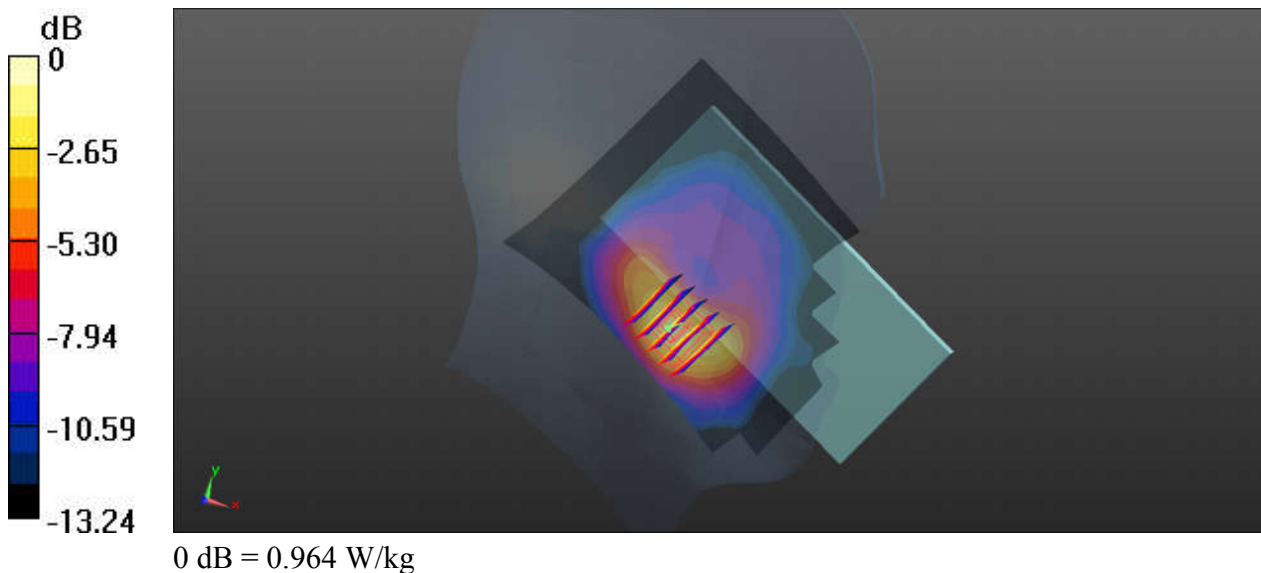
Communication System: UID 0, LTE (0); Frequency: 782 MHz; Duty Cycle: 1:1
Medium: HSL_750_190728 Medium parameters used: $f = 782 \text{ MHz}$; $\sigma = 0.899 \text{ S/m}$; $\epsilon_r = 40.06$; $\rho = 1000 \text{ kg/m}^3$
Ambient Temperature : $23.5 \text{ }^\circ\text{C}$; Liquid Temperature : $22.6 \text{ }^\circ\text{C}$

DASY5 Configuration:

- Probe: EX3DV4 - SN3819; ConvF(10, 10, 10); Calibrated: 2019.03.01;
- Sensor-Surface: 2mm (Mechanical Surface Detection)
- Electronics: DAE4 Sn715; Calibrated: 2019.01.23
- Phantom: SAM (Front) with CRP v5.0; Type: QD000P40CD; Serial: TP:1795
- Measurement SW: DASY52, Version 52.8 (8); SEMCAD X Version 14.6.10 (7331)

Ch23230/Area Scan (81x121x1): Interpolated grid: $dx=15\text{mm}$, $dy=15\text{mm}$
Maximum value of SAR (interpolated) = 0.778 W/kg

Ch23230/Zoom Scan (5x5x7)/Cube 0: Measurement grid: $dx=8\text{mm}$, $dy=8\text{mm}$, $dz=5\text{mm}$
Reference Value = 8.184 V/m ; Power Drift = 0.08 dB
Peak SAR (extrapolated) = 1.38 W/kg
SAR(1 g) = 0.735 W/kg ; SAR(10 g) = 0.416 W/kg
Maximum value of SAR (measured) = 0.964 W/kg



12_LTE Band 5_10M_QPSK_25RB_0Offset_Left Cheek_Ch20525

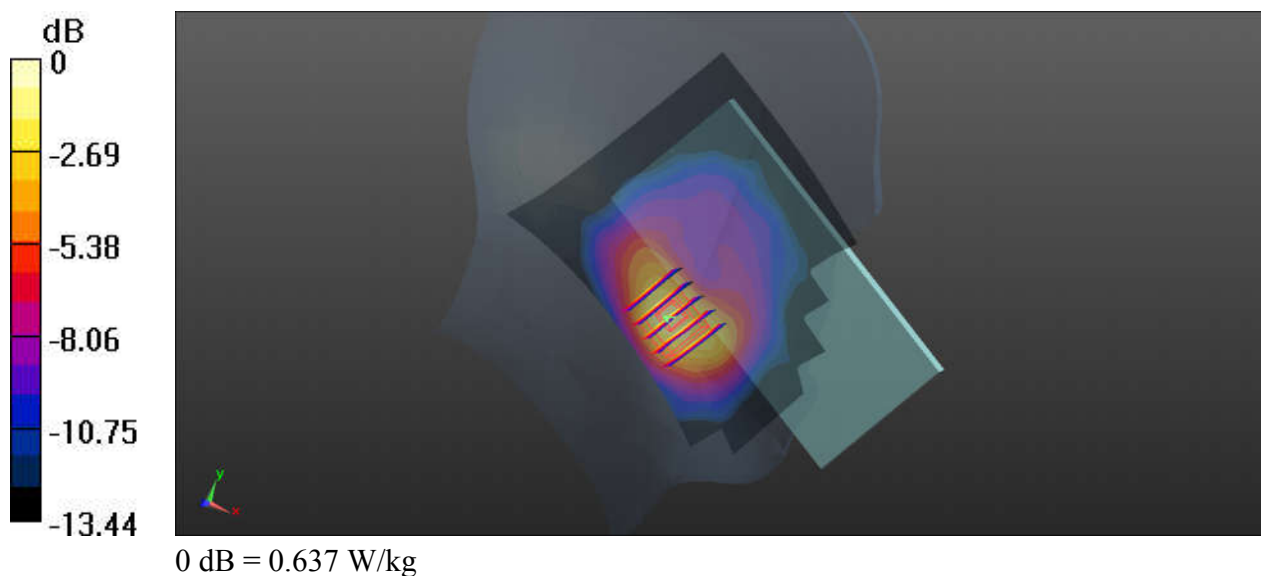
Communication System: UID 0, LTE (0); Frequency: 836.5 MHz; Duty Cycle: 1:1
Medium: HSL_835_190729 Medium parameters used: $f = 836.5$ MHz; $\sigma = 0.898$ S/m; $\epsilon_r = 40.771$;
 $\rho = 1000$ kg/m³
Ambient Temperature : 23.4 °C; Liquid Temperature : 22.7 °C

DASY5 Configuration:

- Probe: EX3DV4 - SN3819; ConvF(9.57, 9.57, 9.57); Calibrated: 2019.03.01;
- Sensor-Surface: 2mm (Mechanical Surface Detection)
- Electronics: DAE4 Sn715; Calibrated: 2019.01.23
- Phantom: SAM (Front) with CRP v5.0; Type: QD000P40CD; Serial: TP:1795
- Measurement SW: DASY52, Version 52.8 (8); SEMCAD X Version 14.6.10 (7331)

Ch20525/Area Scan (81x121x1): Interpolated grid: dx=15mm, dy=15mm
Maximum value of SAR (interpolated) = 0.519 W/kg

Ch20525/Zoom Scan (5x5x7)/Cube 0: Measurement grid: dx=8mm, dy=8mm, dz=5mm
Reference Value = 6.802 V/m; Power Drift = 0.09 dB
Peak SAR (extrapolated) = 0.944 W/kg
SAR(1 g) = 0.501 W/kg; SAR(10 g) = 0.275 W/kg
Maximum value of SAR (measured) = 0.637 W/kg



13_LTE Band 26_15M_QPSK_36RB_0Offset_Left Cheek_Ch26965

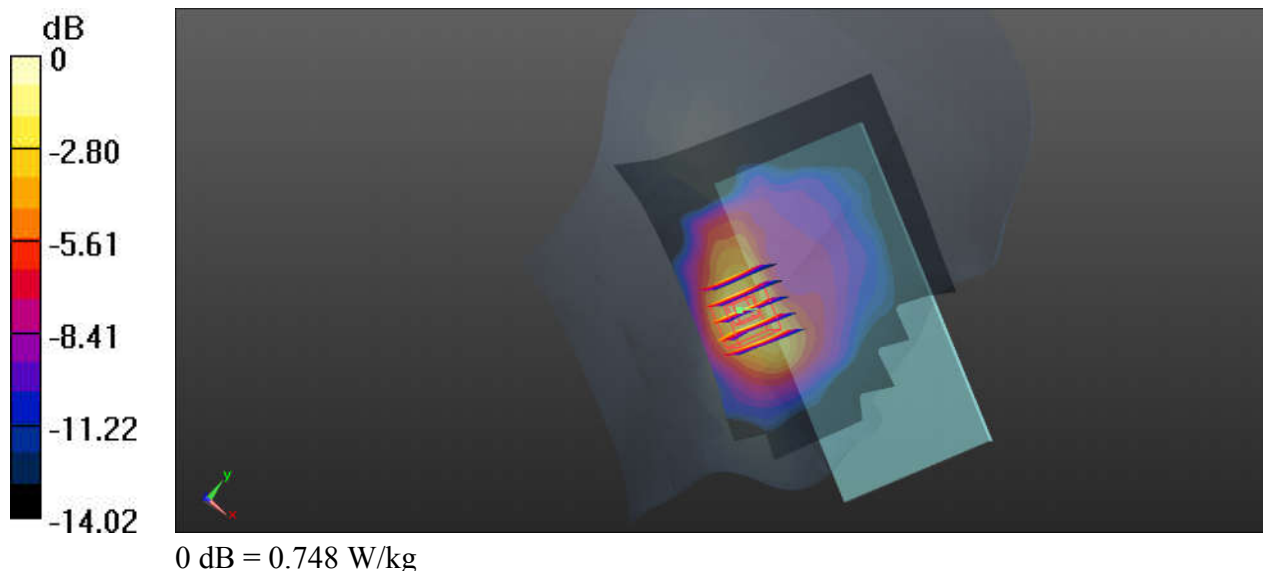
Communication System: UID 0, LTE (0); Frequency: 841.5 MHz; Duty Cycle: 1:1
 Medium: HSL_835_190729 Medium parameters used: $f = 841.5 \text{ MHz}$; $\sigma = 0.902 \text{ S/m}$; $\epsilon_r = 40.725$;
 $\rho = 1000 \text{ kg/m}^3$
 Ambient Temperature : 23.4 °C ; Liquid Temperature : 22.7 °C

DASY5 Configuration:

- Probe: EX3DV4 - SN3819; ConvF(9.57, 9.57, 9.57); Calibrated: 2019.03.01;
- Sensor-Surface: 2mm (Mechanical Surface Detection)
- Electronics: DAE4 Sn715; Calibrated: 2019.01.23
- Phantom: SAM (Front) with CRP v5.0; Type: QD000P40CD; Serial: TP:1795
- Measurement SW: DASY52, Version 52.8 (8); SEMCAD X Version 14.6.10 (7331)

Ch26965/Area Scan (81x121x1): Interpolated grid: $dx=15\text{mm}$, $dy=15\text{mm}$
 Maximum value of SAR (interpolated) = 0.588 W/kg

Ch26965/Zoom Scan (5x5x7)/Cube 0: Measurement grid: $dx=8\text{mm}$, $dy=8\text{mm}$, $dz=5\text{mm}$
 Reference Value = 7.506 V/m; Power Drift = 0.04 dB
 Peak SAR (extrapolated) = 1.02 W/kg
SAR(1 g) = 0.545 W/kg; SAR(10 g) = 0.300 W/kg
 Maximum value of SAR (measured) = 0.748 W/kg



14_LTE Band 66_20M_QPSK_100RB_0Offset_Right Cheek_Ch132322

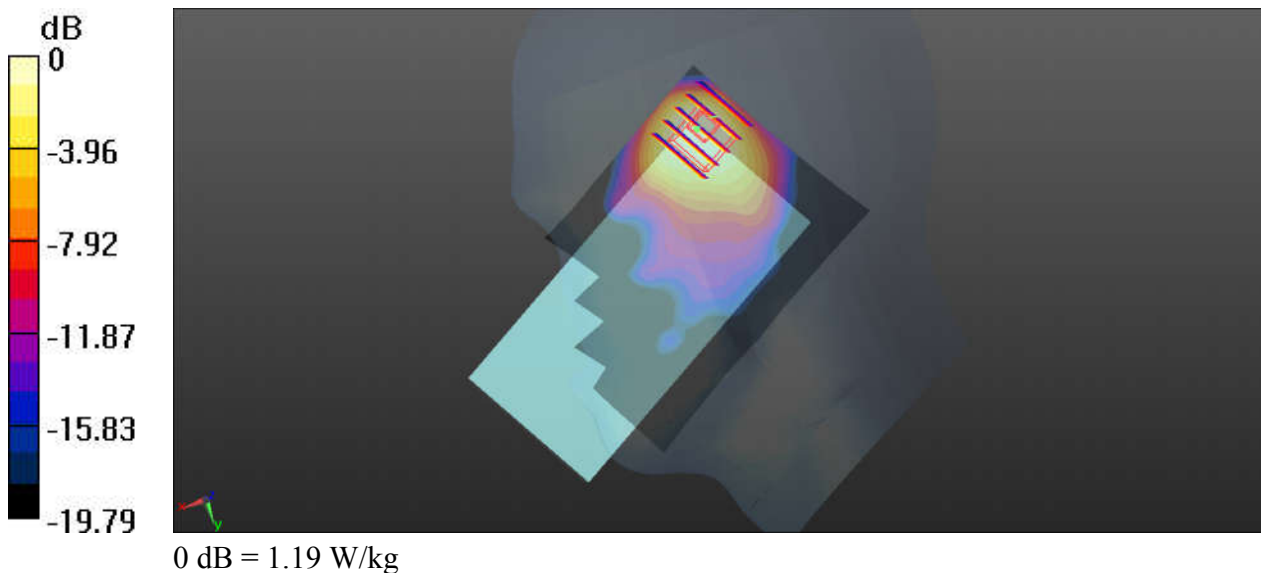
Communication System: UID 0, LTE (0); Frequency: 1745 MHz; Duty Cycle: 1:1
Medium: HSL_1750_190807 Medium parameters used: $f = 1745$ MHz; $\sigma = 1.38$ S/m; $\epsilon_r = 39.923$; $\rho = 1000$ kg/m³
Ambient Temperature : 23.8 °C; Liquid Temperature : 22.4 °C

DASY5 Configuration:

- Probe: EX3DV4 - SN3819; ConvF(8.54, 8.54, 8.54); Calibrated: 2019.03.01;
- Sensor-Surface: 2mm (Mechanical Surface Detection)
- Electronics: DAE4 Sn715; Calibrated: 2019.01.23
- Phantom: SAM (Front) with CRP v5.0; Type: QD000P40CD; Serial: TP:1795
- Measurement SW: DASY52, Version 52.8 (8); SEMCAD X Version 14.6.10 (7331)

Ch132322/Area Scan (71x121x1): Interpolated grid: dx=15mm, dy=15mm
Maximum value of SAR (interpolated) = 1.81 W/kg

Ch132322/Zoom Scan (5x5x7)/Cube 0: Measurement grid: dx=8mm, dy=8mm, dz=5mm
Reference Value = 19.35 V/m; Power Drift = 0.01 dB
Peak SAR (extrapolated) = 1.82 W/kg
SAR(1 g) = 0.886 W/kg; SAR(10 g) = 0.485 W/kg
Maximum value of SAR (measured) = 1.19 W/kg



15_LTE Band 25_20M_QPSK_100RB_0Offset_Right Cheek_Ch26140

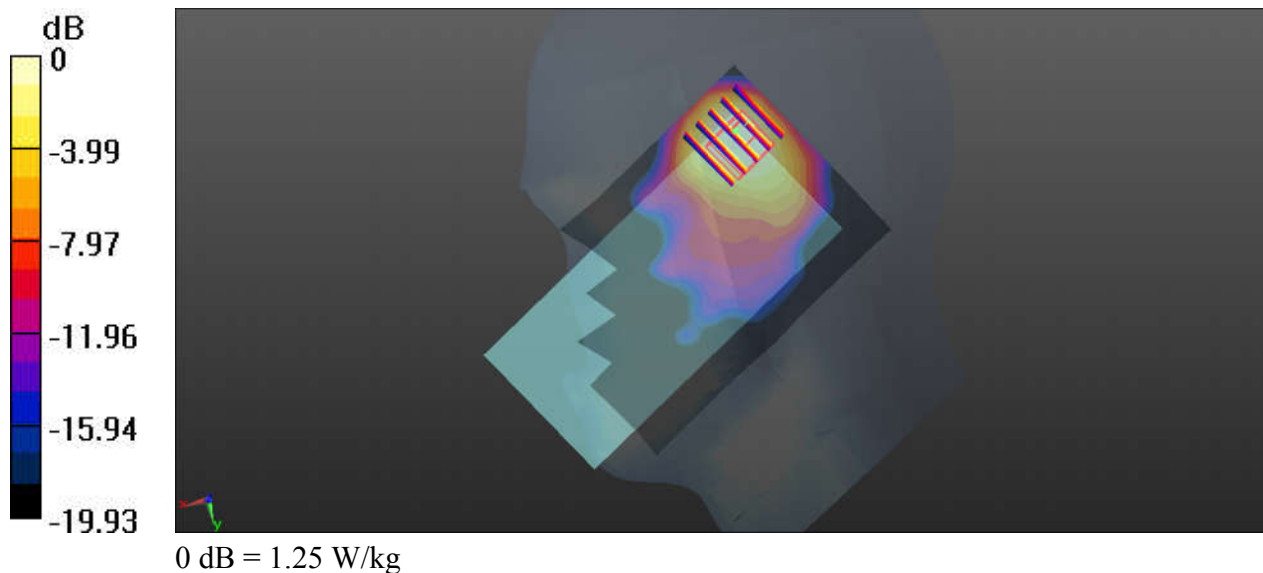
Communication System: UID 0, LTE (0); Frequency: 1860 MHz; Duty Cycle: 1:1
 Medium: HSL_1900_190806 Medium parameters used: $f = 1860$ MHz; $\sigma = 1.414$ S/m; $\epsilon_r = 40.253$;
 $\rho = 1000$ kg/m³
 Ambient Temperature : 23.7 °C; Liquid Temperature : 22.6 °C

DASY5 Configuration:

- Probe: EX3DV4 - SN3819; ConvF(8.27, 8.27, 8.27); Calibrated: 2019.03.01;
- Sensor-Surface: 2mm (Mechanical Surface Detection)
- Electronics: DAE4 Sn715; Calibrated: 2019.01.23
- Phantom: SAM (Front) with CRP v5.0; Type: QD000P40CD; Serial: TP:1795
- Measurement SW: DASY52, Version 52.8 (8); SEMCAD X Version 14.6.10 (7331)

Ch26140/Area Scan (71x121x1): Interpolated grid: dx=15mm, dy=15mm
 Maximum value of SAR (interpolated) = 1.79 W/kg

Ch26140/Zoom Scan (5x5x7)/Cube 0: Measurement grid: dx=8mm, dy=8mm, dz=5mm
 Reference Value = 21.23 V/m; Power Drift = 0.05 dB
 Peak SAR (extrapolated) = 1.95 W/kg
SAR(1 g) = 0.913 W/kg; SAR(10 g) = 0.504 W/kg
 Maximum value of SAR (measured) = 1.25 W/kg



16_LTE Band 30_10M_QPSK_25RB_0Offset_Right Tilted_Ch27710

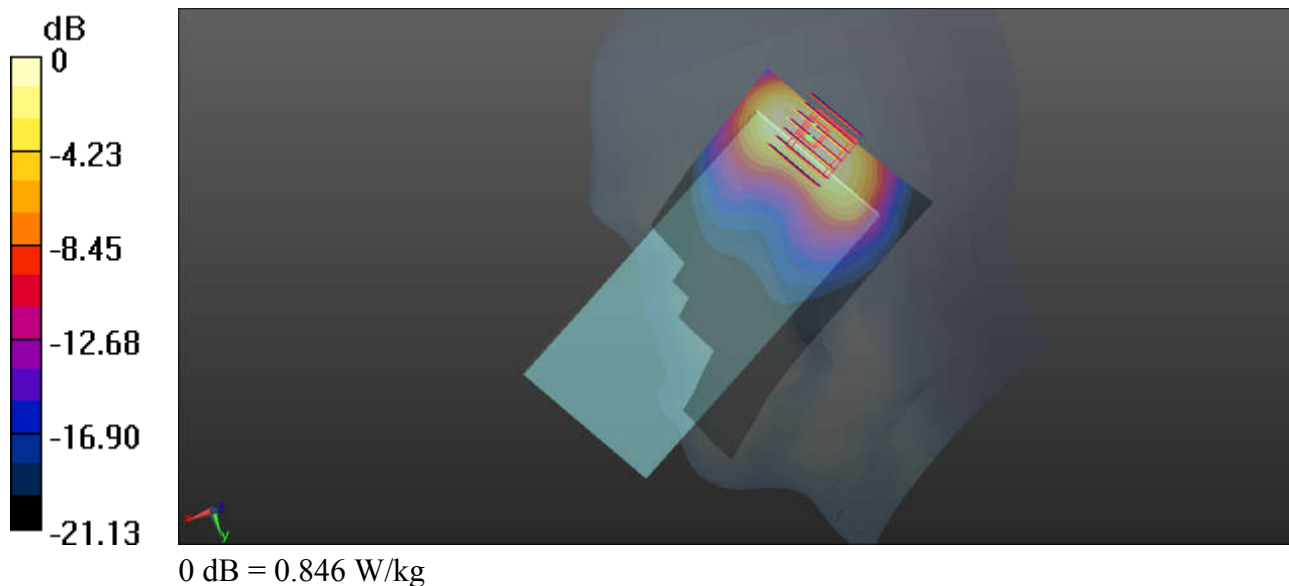
Communication System: UID 0, LTE (0); Frequency: 2310 MHz; Duty Cycle: 1:1
Medium: HSL_2300_190727 Medium parameters used: $f = 2310$ MHz; $\sigma = 1.705$ S/m; $\epsilon_r = 38.305$; $\rho = 1000$ kg/m³
Ambient Temperature : 23.6 °C; Liquid Temperature : 22.4 °C

DASY5 Configuration:

- Probe: EX3DV4 - SN3819; ConvF(7.64, 7.64, 7.64); Calibrated: 2019.03.01;
- Sensor-Surface: 2mm (Mechanical Surface Detection)
- Electronics: DAE4 Sn715; Calibrated: 2019.01.23
- Phantom: SAM (Front) with CRP v5.0; Type: QD000P40CD; Serial: TP:1795
- Measurement SW: DASY52, Version 52.8 (8); SEMCAD X Version 14.6.10 (7331)

Ch27710/Area Scan (81x141x1): Interpolated grid: dx=12mm, dy=12mm
Maximum value of SAR (interpolated) = 0.846 W/kg

Ch27710/Zoom Scan (7x7x7)/Cube 0: Measurement grid: dx=5mm, dy=5mm, dz=5mm
Reference Value = 15.34 V/m; Power Drift = 0.04 dB
Peak SAR (extrapolated) = 1.36 W/kg
SAR(1 g) = 0.657 W/kg; SAR(10 g) = 0.327 W/kg
Maximum value of SAR (measured) = 0.837 W/kg



17_LTE Band 7_20M_QPSK_50RB_0Offset_Right Cheek_Ch20850

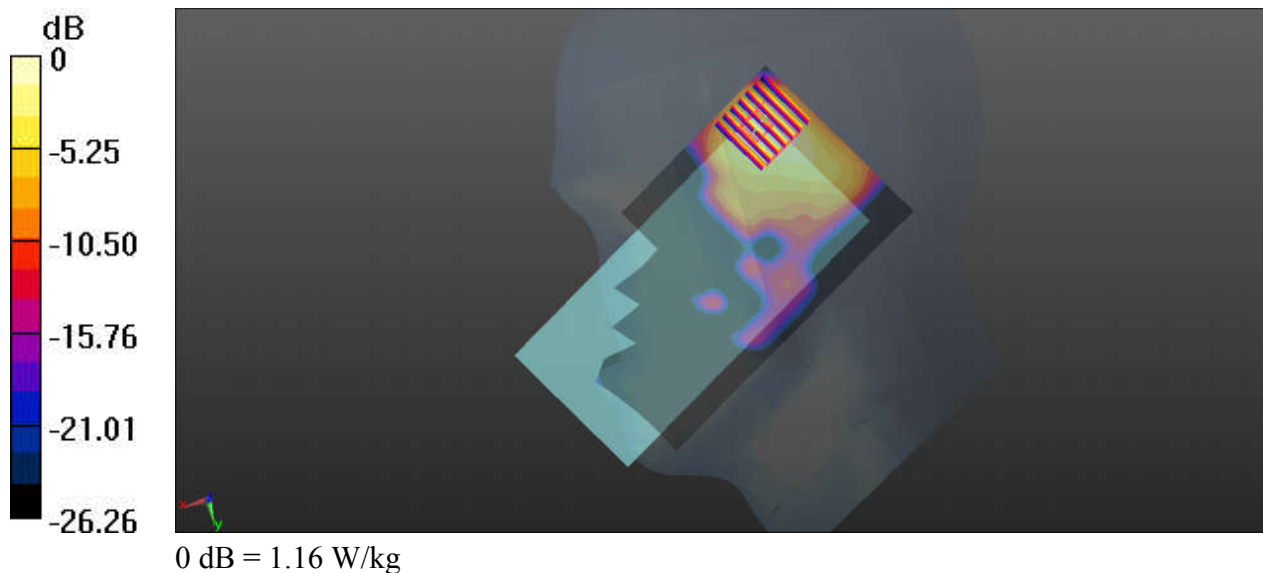
Communication System: UID 0, LTE (0); Frequency: 2510 MHz; Duty Cycle: 1:1
 Medium: HSL_2600_190730 Medium parameters used: $f = 2510$ MHz; $\sigma = 1.949$ S/m; $\epsilon_r = 38.66$; $\rho = 1000$ kg/m³
 Ambient Temperature : 23.5 °C; Liquid Temperature : 22.4 °C

DASY5 Configuration:

- Probe: EX3DV4 - SN3819; ConvF(7.06, 7.06, 7.06); Calibrated: 2019.03.01;
- Sensor-Surface: 2mm (Mechanical Surface Detection)
- Electronics: DAE4 Sn715; Calibrated: 2019.01.23
- Phantom: SAM (Front) with CRP v5.0; Type: QD000P40CD; Serial: TP:1795
- Measurement SW: DASY52, Version 52.8 (8); SEMCAD X Version 14.6.10 (7331)

Ch20850/Area Scan (81x141x1): Interpolated grid: dx=12mm, dy=12mm
 Maximum value of SAR (interpolated) = 1.16 W/kg

Ch20850/Zoom Scan (7x7x7)/Cube 0: Measurement grid: dx=5mm, dy=5mm, dz=5mm
 Reference Value = 12.98 V/m; Power Drift = 0.01 dB
 Peak SAR (extrapolated) = 1.54 W/kg
SAR(1 g) = 0.645 W/kg; SAR(10 g) = 0.323 W/kg
 Maximum value of SAR (measured) = 1.04 W/kg



18_LTE Band 41_20M_QPSK_50RB_24Offset_Right Check_Ch41490

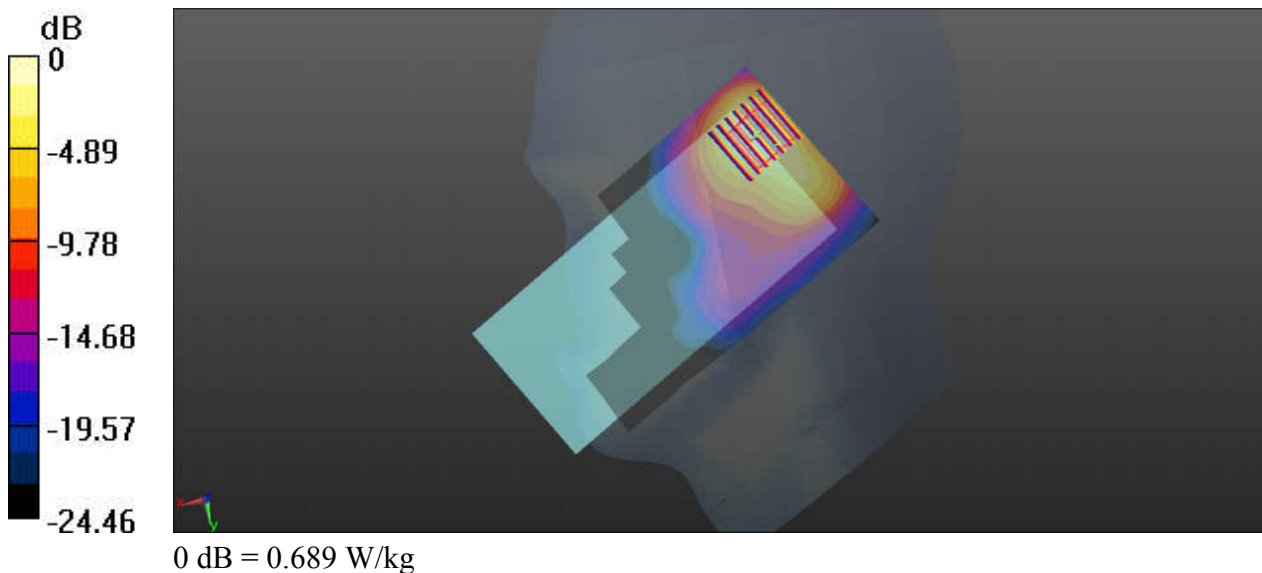
Communication System: UID 0, LTE (0); Frequency: 2680 MHz; Duty Cycle: 1:1.59
Medium: HSL_2600_190730 Medium parameters used: $f = 2680$ MHz; $\sigma = 2.152$ S/m; $\epsilon_r = 38.056$;
 $\rho = 1000$ kg/m³
Ambient Temperature : 23.5 °C; Liquid Temperature : 22.4 °C

DASY5 Configuration:

- Probe: EX3DV4 - SN3819; ConvF(7.06, 7.06, 7.06); Calibrated: 2019.03.01;
- Sensor-Surface: 2mm (Mechanical Surface Detection)
- Electronics: DAE4 Sn715; Calibrated: 2019.01.23
- Phantom: SAM (Front) with CRP v5.0; Type: QD000P40CD; Serial: TP:1795
- Measurement SW: DASY52, Version 52.8 (8); SEMCAD X Version 14.6.10 (7331)

Ch41490/Area Scan (81x141x1): Interpolated grid: dx=12mm, dy=12mm
Maximum value of SAR (interpolated) = 0.824 W/kg

Ch41490/Zoom Scan (7x7x7)/Cube 0: Measurement grid: dx=5mm, dy=5mm, dz=5mm
Reference Value = 12.32 V/m; Power Drift = -0.17 dB
Peak SAR (extrapolated) = 1.20 W/kg
SAR(1 g) = 0.622 W/kg; SAR(10 g) = 0.287 W/kg
Maximum value of SAR (measured) = 0.689 W/kg



19_LTE Band 48_20M_QPSK_50RB_24Offset_Right Cheek_Ch56640

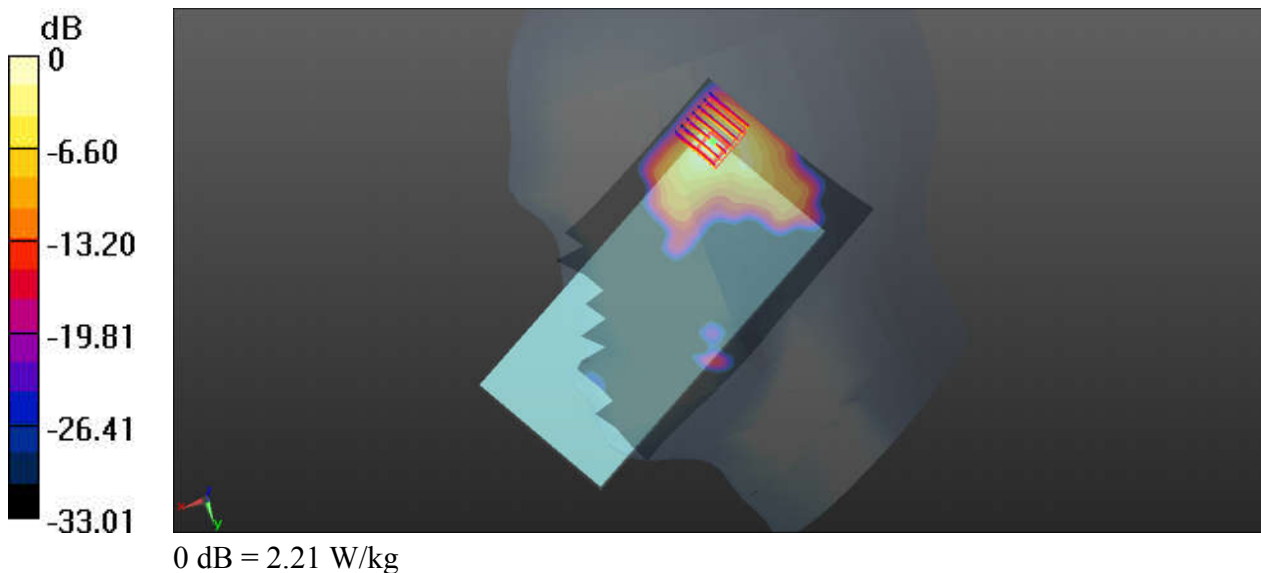
Communication System: UID 0, LTE (0); Frequency: 3690 MHz; Duty Cycle: 1:1.59
Medium: HSL_3500-3700_190805 Medium parameters used: $f = 3690$ MHz; $\sigma = 3.046$ S/m; $\epsilon_r = 38.387$; $\rho = 1000$ kg/m³
Ambient Temperature : 23.4 °C; Liquid Temperature : 22.8 °C

DASY5 Configuration:

- Probe: EX3DV4 - SN3819; ConvF(6.67, 6.67, 6.67); Calibrated: 2019.03.01;
- Sensor-Surface: 1.4mm (Mechanical Surface Detection)
- Electronics: DAE4 Sn715; Calibrated: 2019.01.23
- Phantom: SAM (Front) with CRP v5.0; Type: QD000P40CD; Serial: TP:1795
- Measurement SW: DASY52, Version 52.8 (8); SEMCAD X Version 14.6.10 (7331)

Ch56640/Area Scan (101x171x1): Interpolated grid: dx=10mm, dy=10mm
Maximum value of SAR (interpolated) = 2.16 W/kg

Ch56640/Zoom Scan (7x7x7)/Cube 0: Measurement grid: dx=4mm, dy=4mm, dz=1.4mm
Reference Value = 12.33 V/m; Power Drift = 0.02 dB
Peak SAR (extrapolated) = 3.31 W/kg
SAR(1 g) = 0.998 W/kg; SAR(10 g) = 0.287 W/kg
Maximum value of SAR (measured) = 2.21 W/kg



20_WLAN2.4GHz_802.11b 1Mbps_Left Check_Ch11

Communication System: UID 0, WIFI (0); Frequency: 2462 MHz; Duty Cycle: 1:1.007
Medium: HSL_2450_190809 Medium parameters used: $f = 2462$ MHz; $\sigma = 1.833$ S/m; $\epsilon_r = 39.712$; $\rho = 1000$ kg/m³
Ambient Temperature : 23.4 °C; Liquid Temperature : 22.8 °C

DASY5 Configuration:

- Probe: ES3DV3 - SN3191; ConvF(4.69, 4.69, 4.69); Calibrated: 2019.01.29;
- Sensor-Surface: 3mm (Mechanical Surface Detection)
- Electronics: DAE4 Sn1437; Calibrated: 2018.10.15
- Phantom: SAM2; Type: QD000P40CD; Serial: TP:1671
- Measurement SW: DASY52, Version 52.8 (8); SEMCAD X Version 14.6.10 (7331)

Ch11/Area Scan (81x141x1): Interpolated grid: dx=12mm, dy=12mm

Maximum value of SAR (interpolated) = 0.509 W/kg

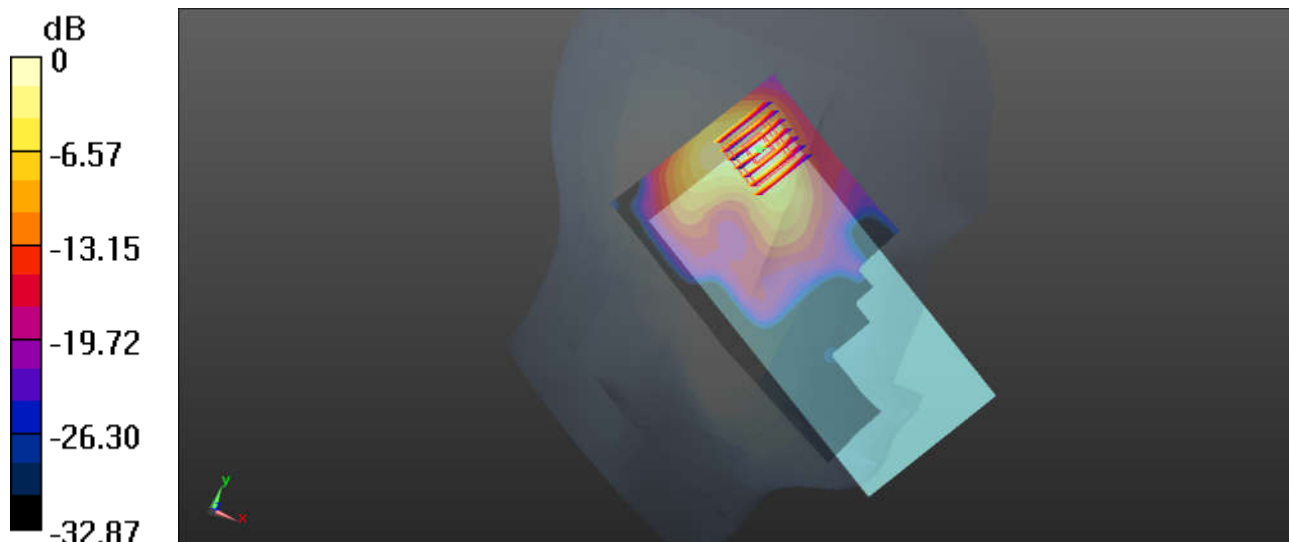
Ch11/Zoom Scan (7x7x7)/Cube 0: Measurement grid: dx=5mm, dy=5mm, dz=5mm

Reference Value = 7.910 V/m; Power Drift = -0.04 dB

Peak SAR (extrapolated) = 0.671 W/kg

SAR(1 g) = 0.340 W/kg; SAR(10 g) = 0.134 W/kg

Maximum value of SAR (measured) = 0.459 W/kg



0 dB = 0.509 W/kg

21_Bluetooth_DH5 1Mbps_Left Cheek_Ch78

Communication System: UID 0, Bluetooth (0); Frequency: 2480 MHz; Duty Cycle: 1:1.301
 Medium: HSL_2450_190731 Medium parameters used: $f = 2480$ MHz; $\sigma = 1.789$ S/m; $\epsilon_r = 40.252$;
 $\rho = 1000$ kg/m³

Ambient Temperature : 23.8 °C; Liquid Temperature : 22.8 °C

DASY5 Configuration:

- Probe: EX3DV4 - SN3935; ConvF(7.69, 7.69, 7.69); Calibrated: 2018.11.26
- Sensor-Surface: 2mm (Mechanical Surface Detection)
- Electronics: DAE4 Sn1303; Calibrated: 2019.01.03
- Phantom: Twin-SAM1(P1aP2a20); Type: QD 000 P40 CD; Serial: TP:1670
- Measurement SW: DASY52, Version 52.10 (2); SEMCAD X Version 14.6.12 (7450)

Ch78/Area Scan (81x151x1): Interpolated grid: dx=12mm, dy=12mm

Maximum value of SAR (interpolated) = 0.355 W/kg

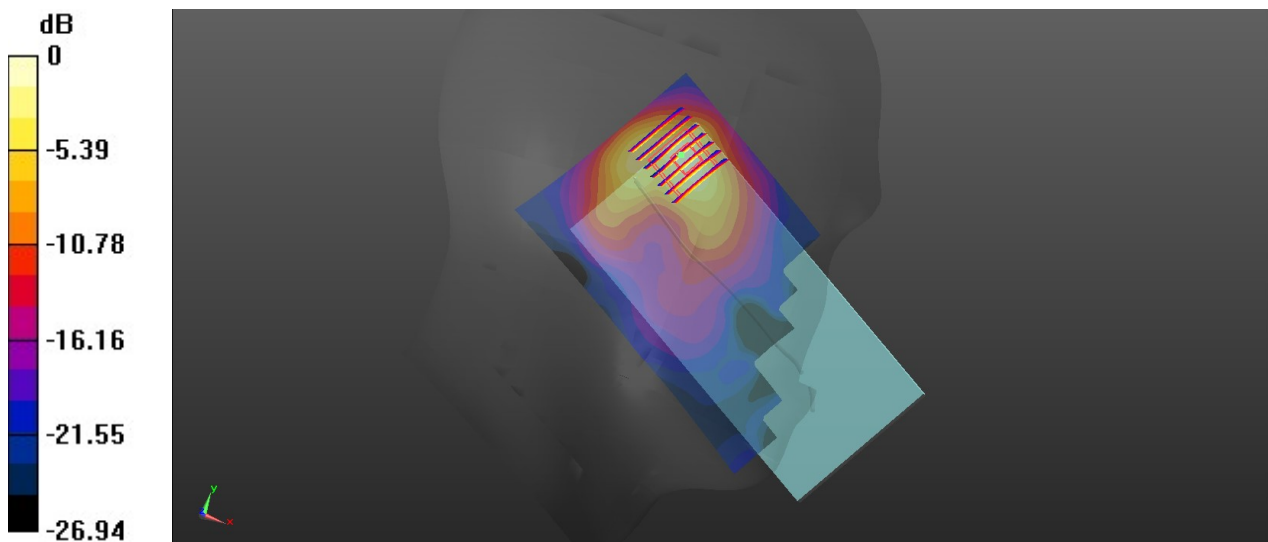
Ch78/Zoom Scan (7x7x7)/Cube 0: Measurement grid: dx=5mm, dy=5mm, dz=5mm

Reference Value = 11.03 V/m; Power Drift = -0.09 dB

Peak SAR (extrapolated) = 0.505 W/kg

SAR(1 g) = 0.240 W/kg; SAR(10 g) = 0.099 W/kg

Maximum value of SAR (measured) = 0.362 W/kg



0 dB = 0.362 W/kg

22_WLAN5GHz_802.11n-HT40 MCS0_Left Cheek_Ch62

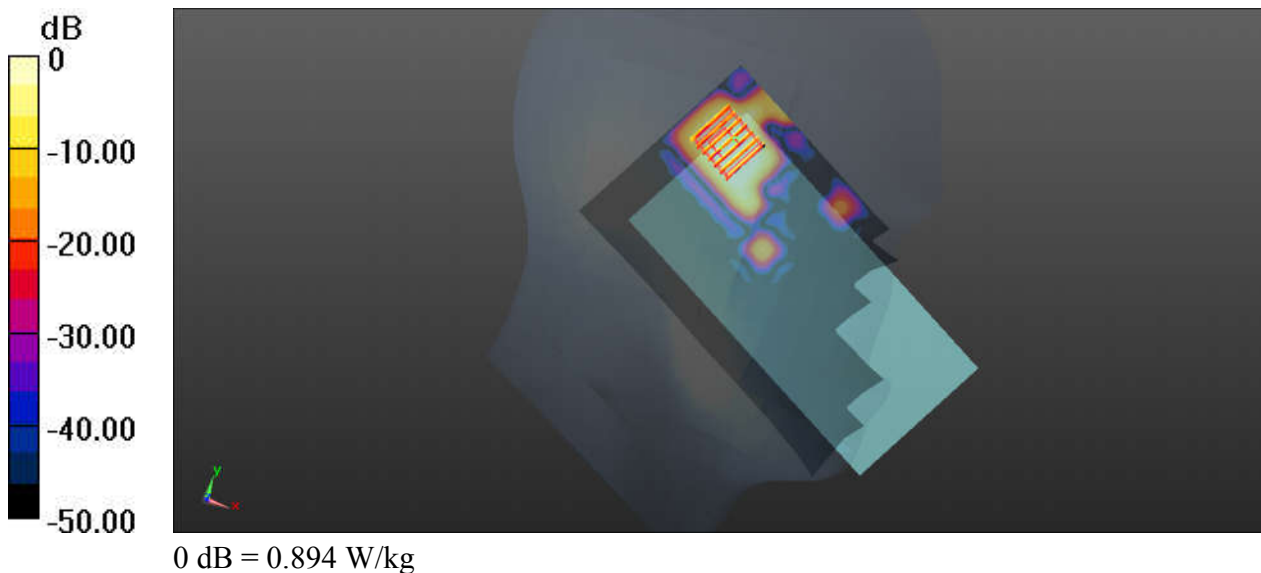
Communication System: UID 0, WIFI (0); Frequency: 5310 MHz; Duty Cycle: 1:1.038
Medium: HSL_5250_190802 Medium parameters used: $f = 5310$ MHz; $\sigma = 4.708$ S/m; $\epsilon_r = 37.006$;
 $\rho = 1000$ kg/m³
Ambient Temperature : 23.7 °C; Liquid Temperature : 22.3 °C

DASY5 Configuration:

- Probe: EX3DV4 - SN3819; ConvF(5.07, 5.07, 5.07); Calibrated: 2019.03.01;
- Sensor-Surface: 1.4mm (Mechanical Surface Detection)
- Electronics: DAE4 Sn715; Calibrated: 2019.01.23
- Phantom: SAM (Front) with CRP v5.0; Type: QD000P40CD; Serial: TP:1795
- Measurement SW: DASY52, Version 52.8 (8); SEMCAD X Version 14.6.10 (7331)

Ch62/Area Scan (101x181x1): Interpolated grid: dx=10mm, dy=10mm
Maximum value of SAR (interpolated) = 1.28 W/kg

Ch62/Zoom Scan (7x7x7)/Cube 0: Measurement grid: dx=4mm, dy=4mm, dz=1.4mm
Reference Value = 3.776 V/m; Power Drift = 0.17 dB
Peak SAR (extrapolated) = 1.48 W/kg
SAR(1 g) = 0.380 W/kg; SAR(10 g) = 0.140 W/kg
Maximum value of SAR (measured) = 0.894 W/kg



23_WLAN5GHz_802.11n-HT40 MCS0_Left Cheek_Ch110

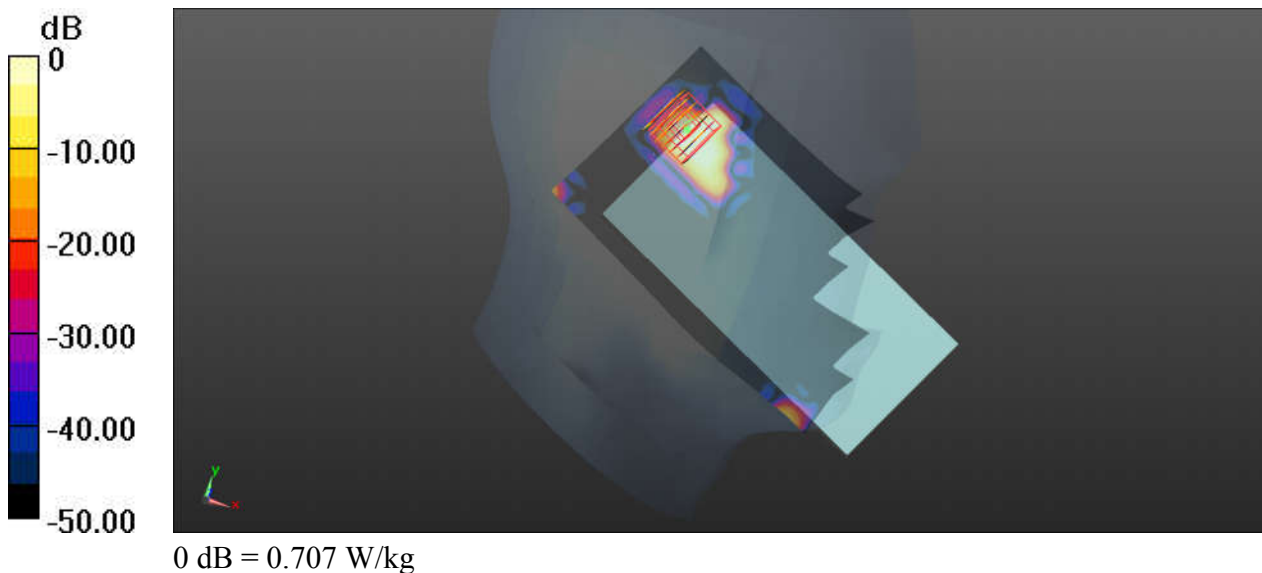
Communication System: UID 0, WIFI (0); Frequency: 5550 MHz; Duty Cycle: 1:1.038
Medium: HSL_5600_190803 Medium parameters used: $f = 5550$ MHz; $\sigma = 4.989$ S/m; $\epsilon_r = 36.631$;
 $\rho = 1000$ kg/m³
Ambient Temperature : 23.5 °C; Liquid Temperature : 22.5 °C

DASY5 Configuration:

- Probe: EX3DV4 - SN3819; ConvF(4.7, 4.7, 4.7); Calibrated: 2019.03.01;
- Sensor-Surface: 1.4mm (Mechanical Surface Detection)
- Electronics: DAE4 Sn715; Calibrated: 2019.01.23
- Phantom: SAM (Front) with CRP v5.0; Type: QD000P40CD; Serial: TP:1795
- Measurement SW: DASY52, Version 52.8 (8); SEMCAD X Version 14.6.10 (7331)

Ch110/Area Scan (101x181x1): Interpolated grid: dx=10mm, dy=10mm
Maximum value of SAR (interpolated) = 1.54 W/kg

Ch110/Zoom Scan (7x7x7)/Cube 0: Measurement grid: dx=4mm, dy=4mm, dz=1.4mm
Reference Value = 2.730 V/m; Power Drift = 0.03 dB
Peak SAR (extrapolated) = 2.81 W/kg
SAR(1 g) = 0.256 W/kg; SAR(10 g) = 0.074 W/kg
Maximum value of SAR (measured) = 0.707 W/kg



24_WLAN5GHz_802.11n-HT40 MCS0_Left Cheek_Ch159

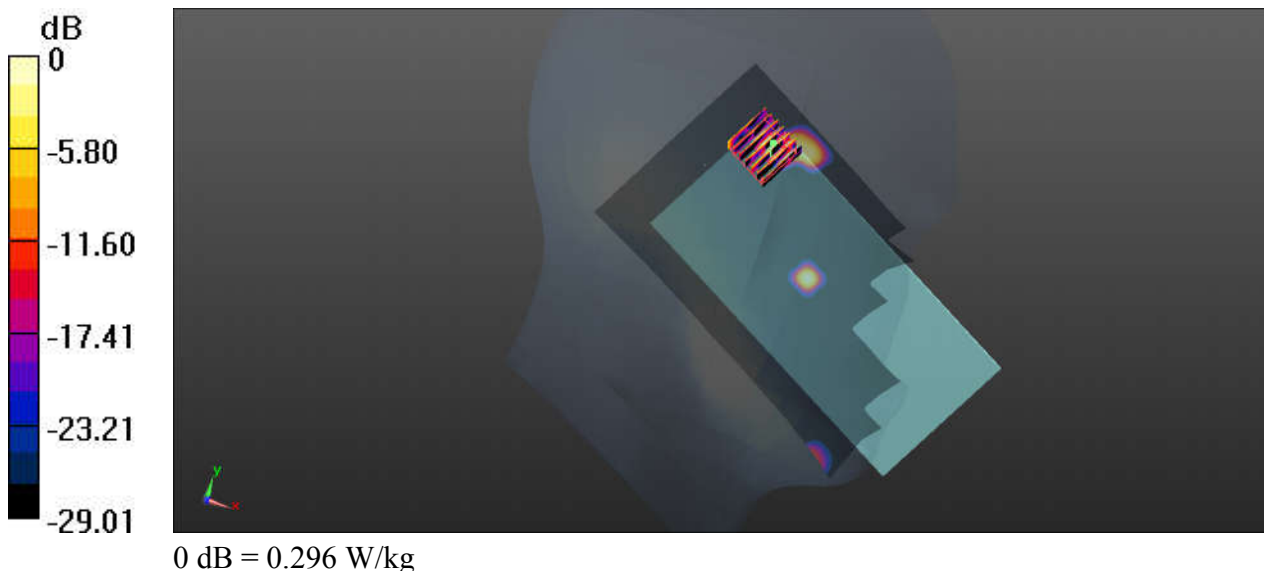
Communication System: UID 0, WIFI (0); Frequency: 5795 MHz; Duty Cycle: 1:1.038
Medium: HSL_5750_190804 Medium parameters used: $f = 5795$ MHz; $\sigma = 5.268$ S/m; $\epsilon_r = 36.208$;
 $\rho = 1000$ kg/m³
Ambient Temperature : 23.6 °C; Liquid Temperature : 22.7 °C

DASY5 Configuration:

- Probe: EX3DV4 - SN3819; ConvF(4.77, 4.77, 4.77); Calibrated: 2019.03.01;
- Sensor-Surface: 1.4mm (Mechanical Surface Detection)
- Electronics: DAE4 Sn715; Calibrated: 2019.01.23
- Phantom: SAM (Front) with CRP v5.0; Type: QD000P40CD; Serial: TP:1795
- Measurement SW: DASY52, Version 52.8 (8); SEMCAD X Version 14.6.10 (7331)

Ch159/Area Scan (101x181x1): Interpolated grid: dx=10mm, dy=10mm
Maximum value of SAR (interpolated) = 0.385 W/kg

Ch159/Zoom Scan (7x7x7)/Cube 0: Measurement grid: dx=4mm, dy=4mm, dz=1.4mm
Reference Value = 1.387 V/m; Power Drift = 0.01 dB
Peak SAR (extrapolated) = 0.626 W/kg
SAR(1 g) = 0.096 W/kg; SAR(10 g) = 0.027 W/kg
Maximum value of SAR (measured) = 0.296 W/kg



25_GSM850_GPRS(3 Tx slots)_Left Side_10mm_Ch251

Communication System: UID 0, GPRS/EDGE11 (0); Frequency: 848.8 MHz; Duty Cycle: 1:2.77
Medium: HSL_835_190729 Medium parameters used: $f = 849$ MHz; $\sigma = 0.908$ S/m; $\epsilon_r = 40.637$; $\rho = 1000$ kg/m³

Ambient Temperature : 23.4 °C; Liquid Temperature : 22.7 °C

DASY5 Configuration:

- Probe: EX3DV4 - SN3819; ConvF(9.57, 9.57, 9.57); Calibrated: 2019.03.01;
- Sensor-Surface: 2mm (Mechanical Surface Detection)
- Electronics: DAE4 Sn715; Calibrated: 2019.01.23
- Phantom: SAM (Front) with CRP v5.0; Type: QD000P40CD; Serial: TP:1795
- Measurement SW: DASY52, Version 52.8 (8); SEMCAD X Version 14.6.10 (7331)

Ch251/Area Scan (41x121x1): Interpolated grid: dx=15mm, dy=15mm

Maximum value of SAR (interpolated) = 0.696 W/kg

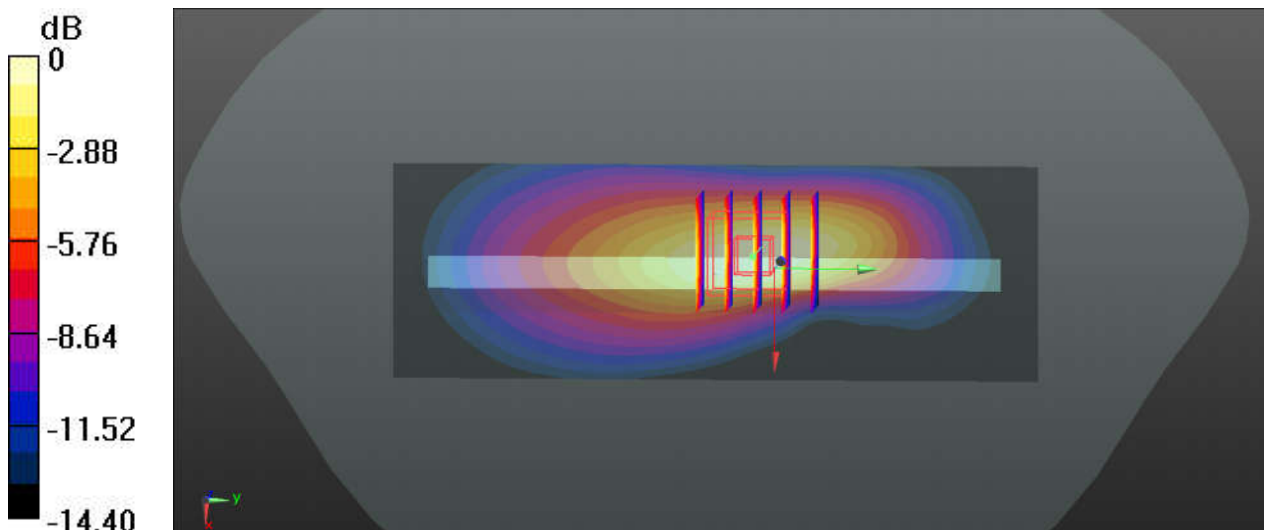
Ch251/Zoom Scan (5x5x7)/Cube 0: Measurement grid: dx=8mm, dy=8mm, dz=5mm

Reference Value = 4.101 V/m; Power Drift = 0.07 dB

Peak SAR (extrapolated) = 0.801 W/kg

SAR(1 g) = 0.478 W/kg; SAR(10 g) = 0.274 W/kg

Maximum value of SAR (measured) = 0.656 W/kg



0 dB = 0.656 W/kg

26_GSM1900_GPRS(3 Tx slots)_Bottom Side_10mm_Ch661

Communication System: UID 0, GPRS/EDGE11 (0); Frequency: 1880 MHz; Duty Cycle: 1:2.77
Medium: HSL_1900_190725 Medium parameters used: $f = 1880$ MHz; $\sigma = 1.428$ S/m; $\epsilon_r = 39.095$;
 $\rho = 1000$ kg/m³
Ambient Temperature : 23.6 °C; Liquid Temperature : 22.5 °C

DASY5 Configuration:

- Probe: EX3DV4 - SN3819; ConvF(8.27, 8.27, 8.27); Calibrated: 2019.03.01;
- Sensor-Surface: 2mm (Mechanical Surface Detection)
- Electronics: DAE4 Sn715; Calibrated: 2019.01.23
- Phantom: SAM (Front) with CRP v5.0; Type: QD000P40CD; Serial: TP:1795
- Measurement SW: DASY52, Version 52.8 (8); SEMCAD X Version 14.6.10 (7331)

Ch661/Area Scan (41x81x1): Interpolated grid: dx=15mm, dy=15mm

Maximum value of SAR (interpolated) = 0.906 W/kg

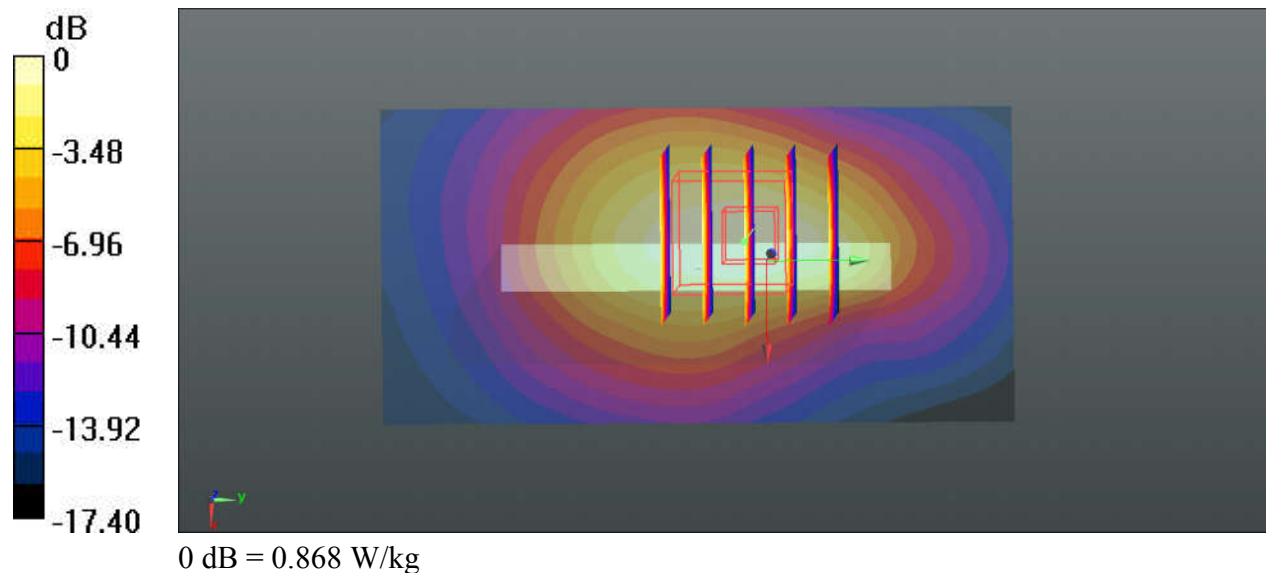
Ch661/Zoom Scan (5x5x7)/Cube 0: Measurement grid: dx=8mm, dy=8mm, dz=5mm

Reference Value = 23.10 V/m; Power Drift = 0.07 dB

Peak SAR (extrapolated) = 1.12 W/kg

SAR(1 g) = 0.619 W/kg; SAR(10 g) = 0.340 W/kg

Maximum value of SAR (measured) = 0.868 W/kg



27_WCDMA V_RMC 12.2Kbps_Left Side_10mm_Ch4132

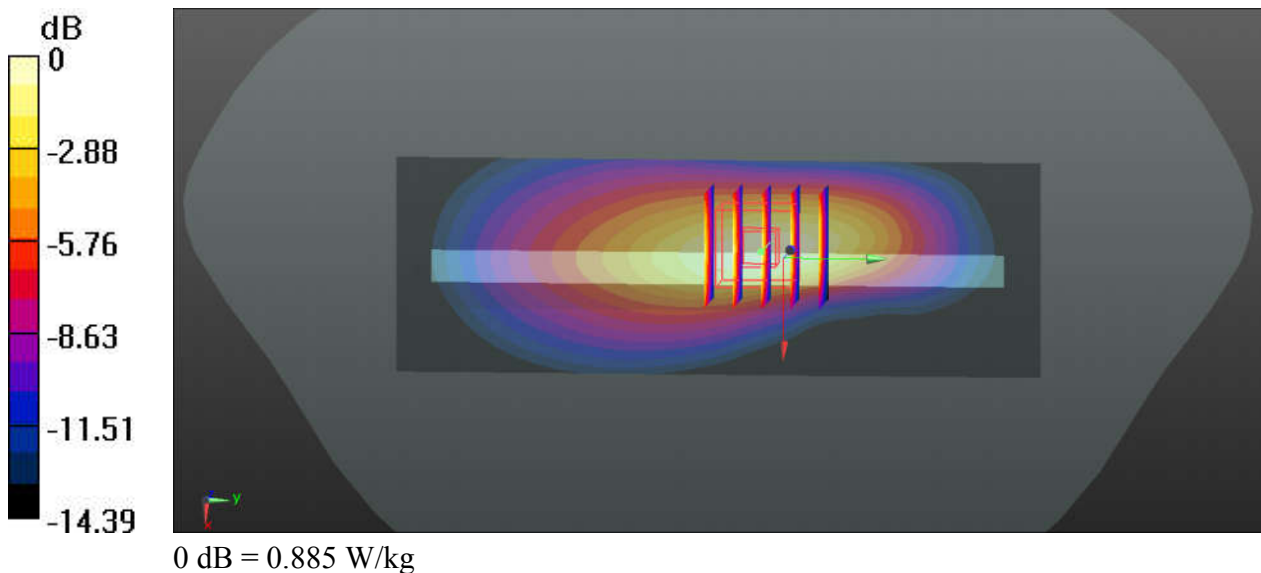
Communication System: UID 0, UMTS (0); Frequency: 826.4 MHz; Duty Cycle: 1:1
Medium: HSL_835_190729 Medium parameters used: $f = 826.5$ MHz; $\sigma = 0.89$ S/m; $\epsilon_r = 40.863$; $\rho = 1000$ kg/m³
Ambient Temperature : 23.4 °C; Liquid Temperature : 22.7 °C

DASY5 Configuration:

- Probe: EX3DV4 - SN3819; ConvF(9.57, 9.57, 9.57); Calibrated: 2019.03.01;
- Sensor-Surface: 2mm (Mechanical Surface Detection)
- Electronics: DAE4 Sn715; Calibrated: 2019.01.23
- Phantom: SAM (Front) with CRP v5.0; Type: QD000P40CD; Serial: TP:1795
- Measurement SW: DASY52, Version 52.8 (8); SEMCAD X Version 14.6.10 (7331)

Ch4132/Area Scan (41x121x1): Interpolated grid: dx=15mm, dy=15mm
Maximum value of SAR (interpolated) = 0.887 W/kg

Ch4132/Zoom Scan (5x5x7)/Cube 0: Measurement grid: dx=8mm, dy=8mm, dz=5mm
Reference Value = 4.664 V/m; Power Drift = -0.14 dB
Peak SAR (extrapolated) = 1.09 W/kg
SAR(1 g) = 0.641 W/kg; SAR(10 g) = 0.368 W/kg
Maximum value of SAR (measured) = 0.885 W/kg



28_WCDMA IV_RMC 12.2Kbps_Bottom Side_10mm_Ch1513

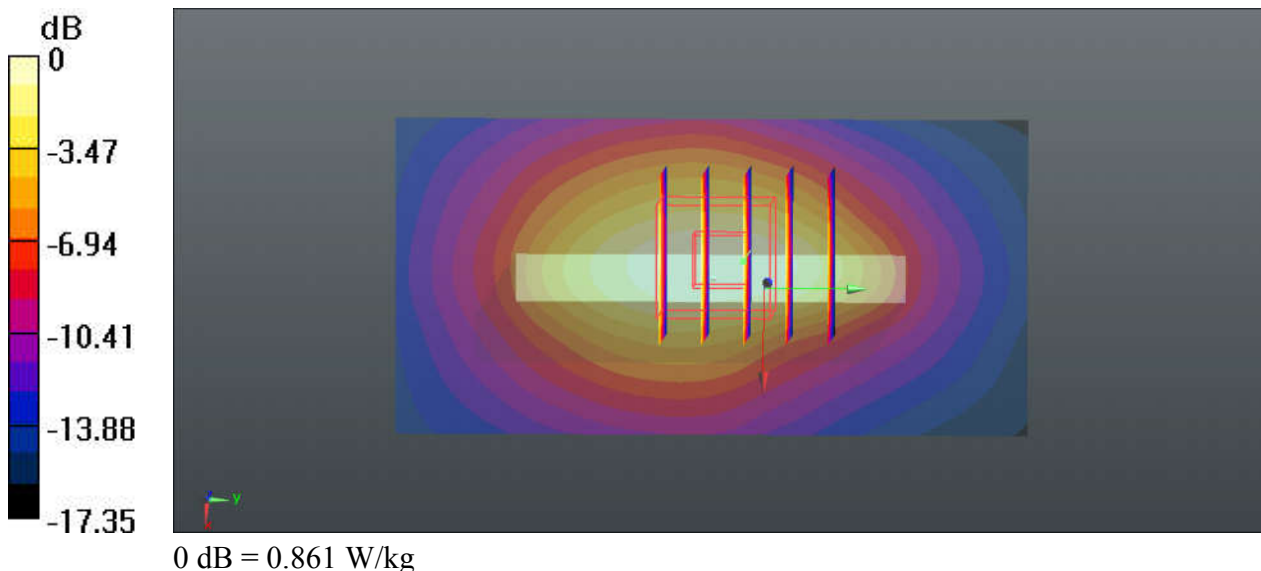
Communication System: UID 0, UMTS (0); Frequency: 1752.6 MHz; Duty Cycle: 1:1
Medium: HSL_1750_190726 Medium parameters used: $f = 1753$ MHz; $\sigma = 1.394$ S/m; $\epsilon_r = 39.929$;
 $\rho = 1000$ kg/m³
Ambient Temperature : 23.7 °C; Liquid Temperature : 22.9 °C

DASY5 Configuration:

- Probe: EX3DV4 - SN3819; ConvF(8.54, 8.54, 8.54); Calibrated: 2019.03.01;
- Sensor-Surface: 2mm (Mechanical Surface Detection)
- Electronics: DAE4 Sn715; Calibrated: 2019.01.23
- Phantom: SAM (Front) with CRP v5.0; Type: QD000P40CD; Serial: TP:1795
- Measurement SW: DASY52, Version 52.8 (8); SEMCAD X Version 14.6.10 (7331)

Ch1513/Area Scan (41x81x1): Interpolated grid: dx=15mm, dy=15mm
Maximum value of SAR (interpolated) = 0.861 W/kg

Ch1513/Zoom Scan (5x5x7)/Cube 0: Measurement grid: dx=8mm, dy=8mm, dz=5mm
Reference Value = 24.95 V/m; Power Drift = 0.08 dB
Peak SAR (extrapolated) = 1.07 W/kg
SAR(1 g) = 0.627 W/kg; SAR(10 g) = 0.351 W/kg
Maximum value of SAR (measured) = 0.863 W/kg



29_WCDMA II_RMC 12.2Kbps_Top Side_10mm_Ch9262

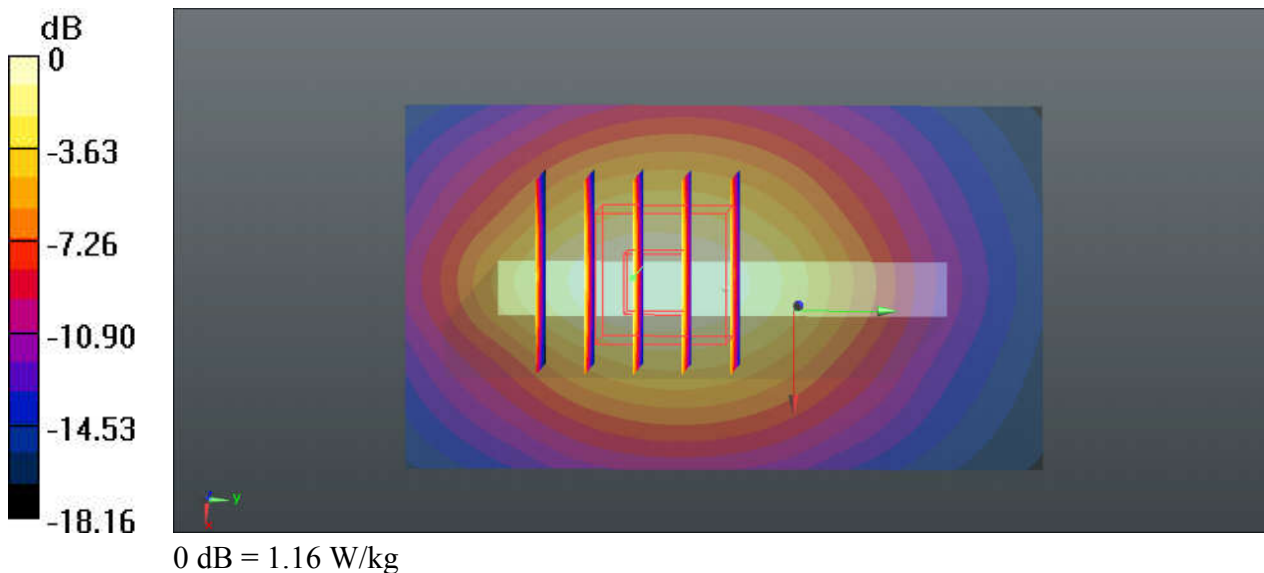
Communication System: UID 0, UMTS (0); Frequency: 1852.4 MHz; Duty Cycle: 1:1
Medium: HSL_1900_190806 Medium parameters used: $f = 1852.4$ MHz; $\sigma = 1.405$ S/m; $\epsilon_r = 40.286$; $\rho = 1000$ kg/m³
Ambient Temperature : 23.7 °C; Liquid Temperature : 22.6 °C

DASY5 Configuration:

- Probe: EX3DV4 - SN3819; ConvF(8.27, 8.27, 8.27); Calibrated: 2019.03.01;
- Sensor-Surface: 2mm (Mechanical Surface Detection)
- Electronics: DAE4 Sn715; Calibrated: 2019.01.23
- Phantom: SAM (Front) with CRP v5.0; Type: QD000P40CD; Serial: TP:1795
- Measurement SW: DASY52, Version 52.8 (8); SEMCAD X Version 14.6.10 (7331)

Ch9262/Area Scan (41x71x1): Interpolated grid: dx=15mm, dy=15mm
Maximum value of SAR (interpolated) = 1.23 W/kg

Ch9262/Zoom Scan (5x5x7)/Cube 0: Measurement grid: dx=8mm, dy=8mm, dz=5mm
Reference Value = 27.18 V/m; Power Drift = -0.02 dB
Peak SAR (extrapolated) = 1.47 W/kg
SAR(1 g) = 0.848 W/kg; SAR(10 g) = 0.472 W/kg
Maximum value of SAR (measured) = 1.16 W/kg



30_CDMA2000 BC0_RTAP 153.6Kbps_Left Side_10mm_Ch384

Communication System: UID 0, CDMA2000 (0); Frequency: 836.52 MHz; Duty Cycle: 1:1
Medium: HSL_835_190729 Medium parameters used: $f = 836.52$ MHz; $\sigma = 0.898$ S/m; $\epsilon_r = 40.771$;
 $\rho = 1000$ kg/m³
Ambient Temperature : 23.4 °C; Liquid Temperature : 22.7 °C

DASY5 Configuration:

- Probe: EX3DV4 - SN3819; ConvF(9.57, 9.57, 9.57); Calibrated: 2019.03.01;
- Sensor-Surface: 2mm (Mechanical Surface Detection)
- Electronics: DAE4 Sn715; Calibrated: 2019.01.23
- Phantom: SAM (Front) with CRP v5.0; Type: QD000P40CD; Serial: TP:1795
- Measurement SW: DASY52, Version 52.8 (8); SEMCAD X Version 14.6.10 (7331)

Ch384/Area Scan (41x121x1): Interpolated grid: dx=15mm, dy=15mm
Maximum value of SAR (interpolated) = 1.03 W/kg

Ch384/Zoom Scan (5x5x7)/Cube 0: Measurement grid: dx=8mm, dy=8mm, dz=5mm
Reference Value = 4.419 V/m; Power Drift = 0.04 dB
Peak SAR (extrapolated) = 1.27 W/kg
SAR(1 g) = 0.747 W/kg; SAR(10 g) = 0.428 W/kg
Maximum value of SAR (measured) = 1.03 W/kg

