

88_WLAN5GHz_802.11n-HT40 MCS0_Back_0mm_Ch102

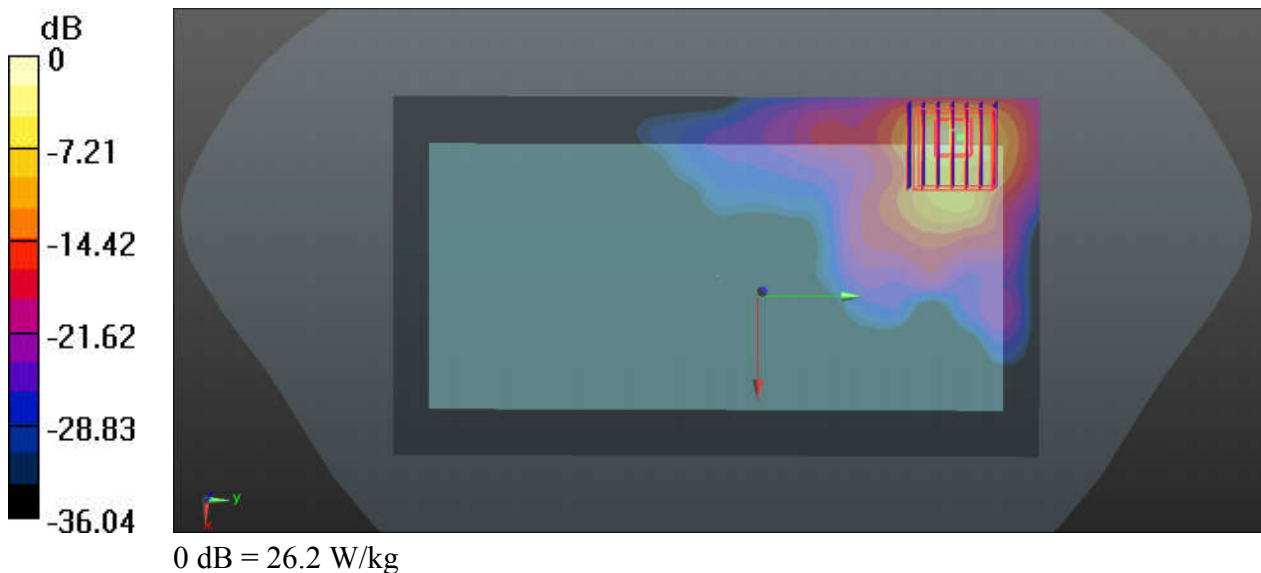
Communication System: UID 0, WIFI (0); Frequency: 5510 MHz; Duty Cycle: 1:1.038
Medium: HSL_5600_190803 Medium parameters used: $f = 5510$ MHz; $\sigma = 4.941$ S/m; $\epsilon_r = 36.702$;
 $\rho = 1000$ kg/m³
Ambient Temperature : 23.5 °C; Liquid Temperature : 22.5 °C

DASY5 Configuration:

- Probe: EX3DV4 - SN3819; ConvF(4.7, 4.7, 4.7); Calibrated: 2019.03.01;
- Sensor-Surface: 1.4mm (Mechanical Surface Detection)
- Electronics: DAE4 Sn715; Calibrated: 2019.01.23
- Phantom: SAM (Front) with CRP v5.0; Type: QD000P40CD; Serial: TP:1795
- Measurement SW: DASY52, Version 52.8 (8); SEMCAD X Version 14.6.10 (7331)

Ch102/Area Scan (101x181x1): Interpolated grid: dx=10mm, dy=10mm
Maximum value of SAR (interpolated) = 22.4 W/kg

Ch102/Zoom Scan (7x7x7)/Cube 0: Measurement grid: dx=4mm, dy=4mm, dz=1.4mm
Reference Value = 0 V/m; Power Drift = 0.05 dB
Peak SAR (extrapolated) = 58.2 W/kg
SAR(1 g) = 8.63 W/kg; SAR(10 g) = 1.86 W/kg
Maximum value of SAR (measured) = 26.2 W/kg



89_WLAN5GHz_802.11n-HT40 MCS0_Back_0mm_Ch159

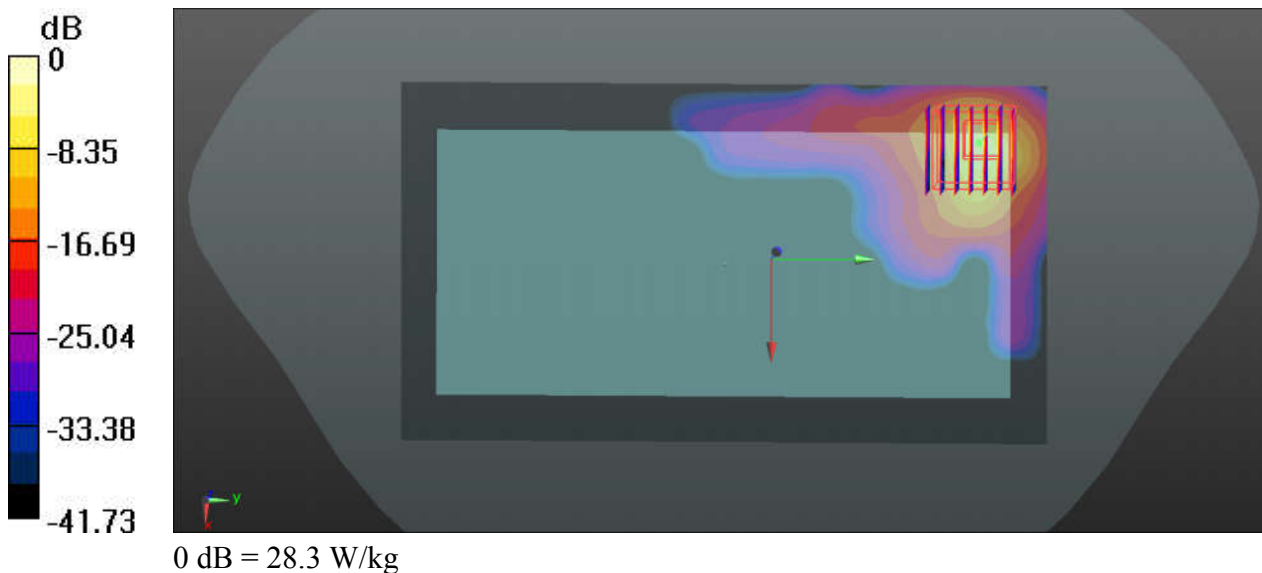
Communication System: UID 0, WIFI (0); Frequency: 5795 MHz; Duty Cycle: 1:1.038
Medium: HSL_5750_190804 Medium parameters used: $f = 5795$ MHz; $\sigma = 5.268$ S/m; $\epsilon_r = 36.208$;
 $\rho = 1000$ kg/m³
Ambient Temperature : 23.6 °C; Liquid Temperature : 22.7 °C

DASY5 Configuration:

- Probe: EX3DV4 - SN3819; ConvF(4.77, 4.77, 4.77); Calibrated: 2019.03.01;
- Sensor-Surface: 1.4mm (Mechanical Surface Detection)
- Electronics: DAE4 Sn715; Calibrated: 2019.01.23
- Phantom: SAM (Front) with CRP v5.0; Type: QD000P40CD; Serial: TP:1795
- Measurement SW: DASY52, Version 52.8 (8); SEMCAD X Version 14.6.10 (7331)

Ch159/Area Scan (101x181x1): Interpolated grid: dx=10mm, dy=10mm
Maximum value of SAR (interpolated) = 11.0 W/kg

Ch159/Zoom Scan (7x7x7)/Cube 0: Measurement grid: dx=4mm, dy=4mm, dz=1.4mm
Reference Value = 0 V/m; Power Drift = 0.06 dB
Peak SAR (extrapolated) = 56.4 W/kg
SAR(1 g) = 7.84 W/kg; SAR(10 g) = 1.47 W/kg
Maximum value of SAR (measured) = 28.3 W/kg



01-1_GSM850_GPRS(4 Tx slot)_Left Cheek_Ch251

Communication System: UID 0, GPRS/EDGE12 (0); Frequency: 848.8 MHz; Duty Cycle: 1:2.08
 Medium: HSL_835_190921 Medium parameters used: $f = 849$ MHz; $\sigma = 0.941$ S/m; $\epsilon_r = 41.625$; $\rho = 1000$ kg/m³

Ambient Temperature : 23.5 °C; Liquid Temperature : 22.6 °C

DASY5 Configuration:

- Probe: EX3DV4 - SN3819; ConvF(9.57, 9.57, 9.57); Calibrated: 2019.03.01;
- Sensor-Surface: 2mm (Mechanical Surface Detection)
- Electronics: DAE4 Sn715; Calibrated: 2019.01.23
- Phantom: SAM (Front) with CRP v5.0; Type: QD000P40CD; Serial: TP:1795
- Measurement SW: DASY52, Version 52.8 (8); SEMCAD X Version 14.6.10 (7331)

Ch251/Area Scan (71x101x1): Interpolated grid: dx=15mm, dy=15mm

Maximum value of SAR (interpolated) = 0.595 W/kg

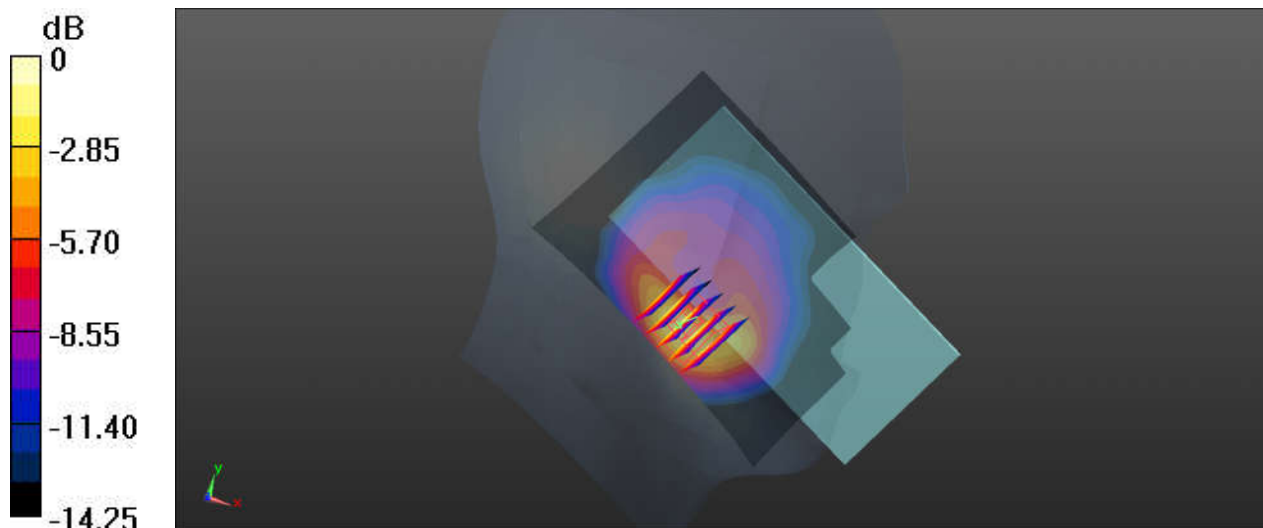
Ch251/Zoom Scan (5x5x7)/Cube 0: Measurement grid: dx=8mm, dy=8mm, dz=5mm

Reference Value = 6.098 V/m; Power Drift = 0.06 dB

Peak SAR (extrapolated) = 1.07 W/kg

SAR(1 g) = 0.563 W/kg; SAR(10 g) = 0.305 W/kg

Maximum value of SAR (measured) = 0.750 W/kg



0 dB = 0.750 W/kg

02-1_GSM1900_GPRS(3 Tx slots)_Right Cheek_Ch661

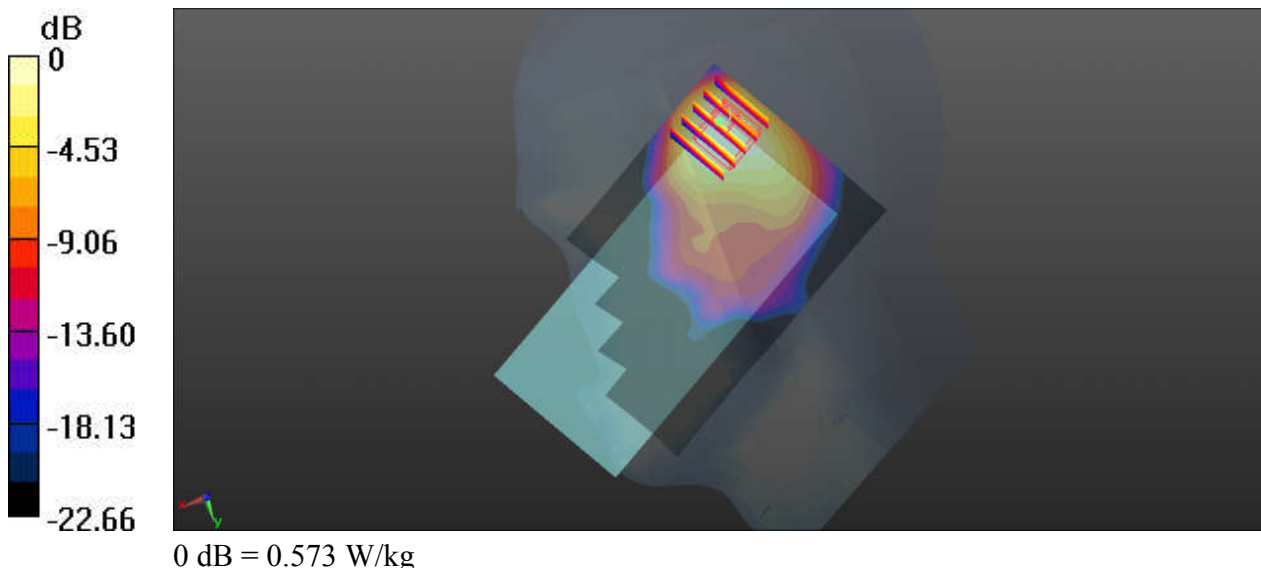
Communication System: UID 0, GPRS/EDGE11 (0); Frequency: 1880 MHz; Duty Cycle: 1:2.77
Medium: HSL_1900_190920 Medium parameters used: $f = 1880$ MHz; $\sigma = 1.435$ S/m; $\epsilon_r = 40.161$;
 $\rho = 1000$ kg/m³
Ambient Temperature : 23.6 °C; Liquid Temperature : 22.7 °C

DASY5 Configuration:

- Probe: EX3DV4 - SN3819; ConvF(8.27, 8.27, 8.27); Calibrated: 2019.03.01;
- Sensor-Surface: 2mm (Mechanical Surface Detection)
- Electronics: DAE4 Sn715; Calibrated: 2019.01.23
- Phantom: SAM (Front) with CRP v5.0; Type: QD000P40CD; Serial: TP:1795
- Measurement SW: DASY52, Version 52.8 (8); SEMCAD X Version 14.6.10 (7331)

Ch661/Area Scan (71x121x1): Interpolated grid: dx=15mm, dy=15mm
Maximum value of SAR (interpolated) = 0.826 W/kg

Ch661/Zoom Scan (5x5x7)/Cube 0: Measurement grid: dx=8mm, dy=8mm, dz=5mm
Reference Value = 14.73 V/m; Power Drift = -0.11 dB
Peak SAR (extrapolated) = 0.781 W/kg
SAR(1 g) = 0.401 W/kg; SAR(10 g) = 0.229 W/kg
Maximum value of SAR (measured) = 0.573 W/kg



03-1_WCDMA V_RMC 12.2Kbps_Left Cheek_Ch4233

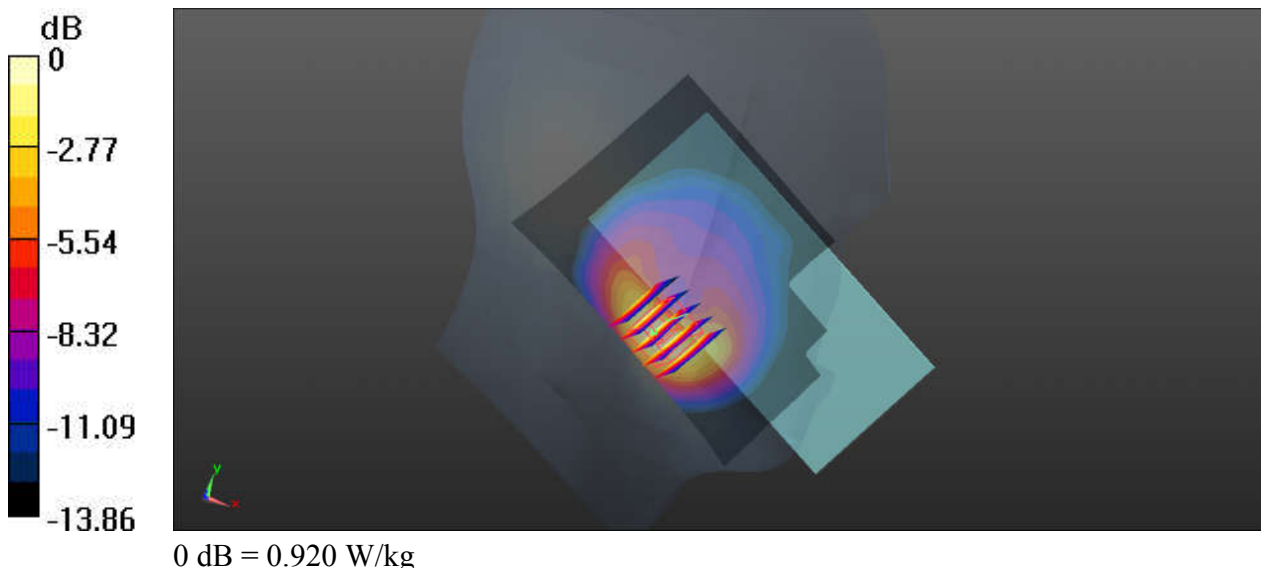
Communication System: UID 0, UMTS (0); Frequency: 846.6 MHz; Duty Cycle: 1:1
Medium: HSL_835_190921 Medium parameters used: $f = 846.6$ MHz; $\sigma = 0.939$ S/m; $\epsilon_r = 41.657$;
 $\rho = 1000$ kg/m³
Ambient Temperature : 23.5 °C; Liquid Temperature : 22.6 °C

DASY5 Configuration:

- Probe: EX3DV4 - SN3819; ConvF(9.57, 9.57, 9.57); Calibrated: 2019.03.01;
- Sensor-Surface: 2mm (Mechanical Surface Detection)
- Electronics: DAE4 Sn715; Calibrated: 2019.01.23
- Phantom: SAM (Front) with CRP v5.0; Type: QD000P40CD; Serial: TP:1795
- Measurement SW: DASY52, Version 52.8 (8); SEMCAD X Version 14.6.10 (7331)

Ch4233/Area Scan (71x101x1): Interpolated grid: dx=15mm, dy=15mm
Maximum value of SAR (interpolated) = 0.968 W/kg

Ch4233/Zoom Scan (5x5x7)/Cube 0: Measurement grid: dx=8mm, dy=8mm, dz=5mm
Reference Value = 6.876 V/m; Power Drift = 0.13 dB
Peak SAR (extrapolated) = 1.45 W/kg
SAR(1 g) = 0.736 W/kg; SAR(10 g) = 0.400 W/kg
Maximum value of SAR (measured) = 0.920 W/kg



04-1_WCDMA IV_RMC 12.2Kbps_Right Cheek_Ch1513

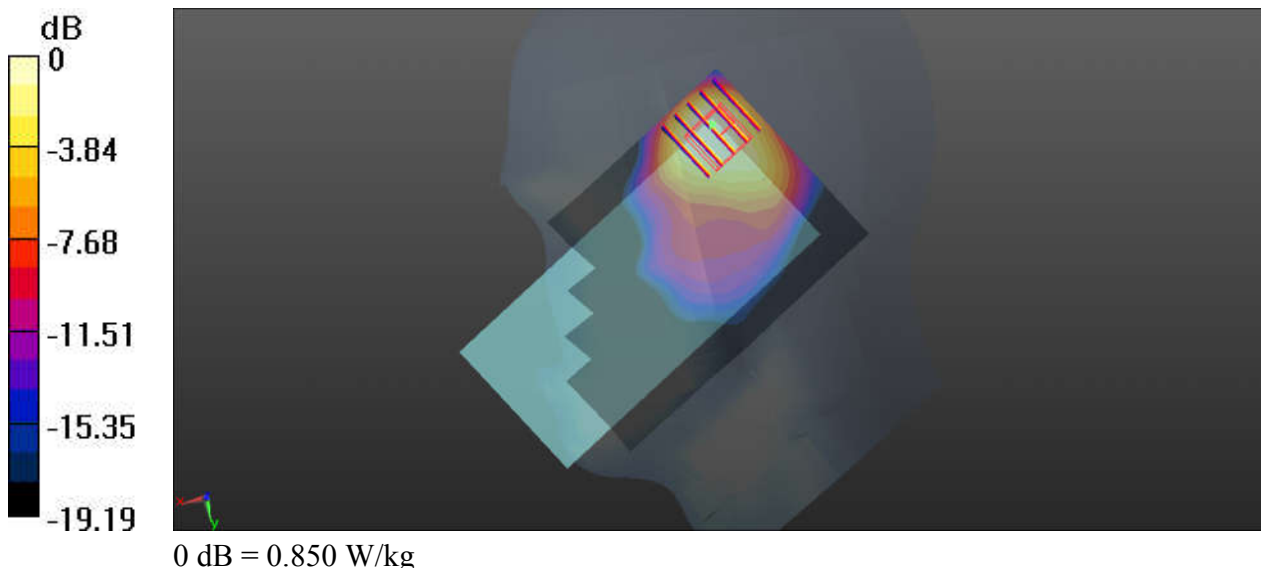
Communication System: UID 0, UMTS (0); Frequency: 1752.6 MHz; Duty Cycle: 1:1
Medium: HSL_1750_190920 Medium parameters used: $f = 1753$ MHz; $\sigma = 1.385$ S/m; $\epsilon_r = 41.544$;
 $\rho = 1000$ kg/m³
Ambient Temperature : 23.7 °C; Liquid Temperature : 22.5 °C

DASY5 Configuration:

- Probe: EX3DV4 - SN3819; ConvF(8.54, 8.54, 8.54); Calibrated: 2019.03.01;
- Sensor-Surface: 2mm (Mechanical Surface Detection)
- Electronics: DAE4 Sn715; Calibrated: 2019.01.23
- Phantom: SAM (Front) with CRP v5.0; Type: QD000P40CD; Serial: TP:1795
- Measurement SW: DASY52, Version 52.8 (8); SEMCAD X Version 14.6.10 (7331)

Ch1513/Area Scan (71x121x1): Interpolated grid: dx=15mm, dy=15mm
Maximum value of SAR (interpolated) = 1.19 W/kg

Ch1513/Zoom Scan (5x5x7)/Cube 0: Measurement grid: dx=8mm, dy=8mm, dz=5mm
Reference Value = 16.34 V/m; Power Drift = 0.12 dB
Peak SAR (extrapolated) = 1.19 W/kg
SAR(1 g) = 0.620 W/kg; SAR(10 g) = 0.354 W/kg
Maximum value of SAR (measured) = 0.850 W/kg



05-1_WCDMA II_RMC 12.2Kbps_Right Cheek_Ch9262

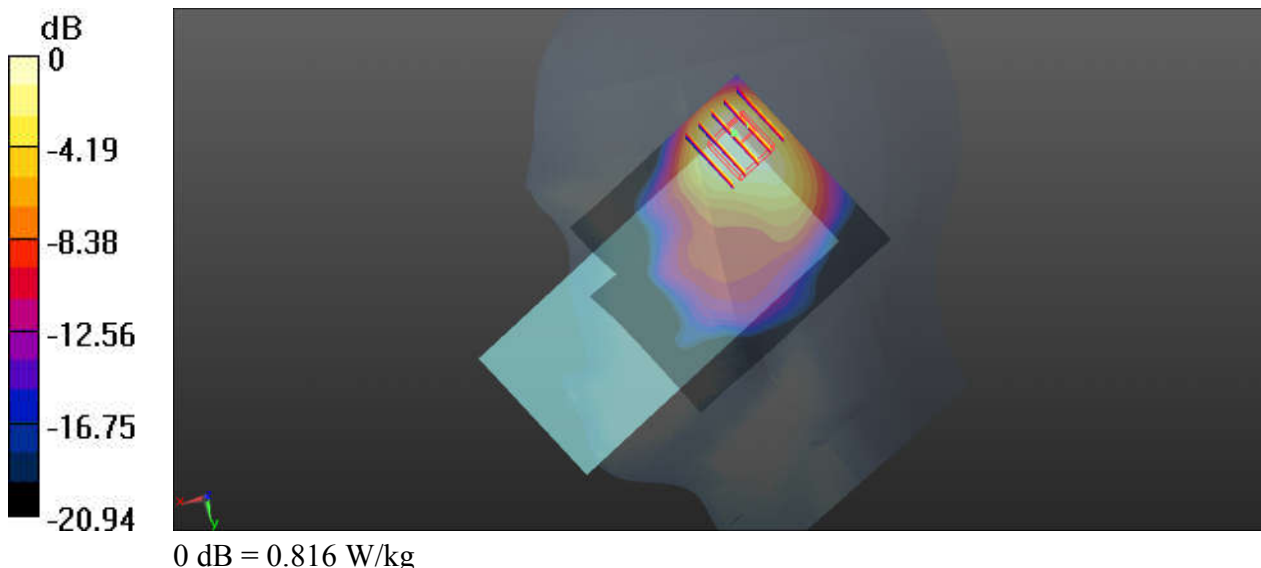
Communication System: UID 0, UMTS (0); Frequency: 1852.4 MHz; Duty Cycle: 1:1
Medium: HSL_1900_190920 Medium parameters used: $f = 1852.4$ MHz; $\sigma = 1.405$ S/m; $\epsilon_r = 40.286$; $\rho = 1000$ kg/m³
Ambient Temperature : 23.6 °C; Liquid Temperature : 22.7 °C

DASY5 Configuration:

- Probe: EX3DV4 - SN3819; ConvF(8.27, 8.27, 8.27); Calibrated: 2019.03.01;
- Sensor-Surface: 2mm (Mechanical Surface Detection)
- Electronics: DAE4 Sn715; Calibrated: 2019.01.23
- Phantom: SAM (Front) with CRP v5.0; Type: QD000P40CD; Serial: TP:1795
- Measurement SW: DASY52, Version 52.8 (8); SEMCAD X Version 14.6.10 (7331)

Ch9262/Area Scan (71x81x1): Interpolated grid: dx=15mm, dy=15mm
Maximum value of SAR (interpolated) = 1.13 W/kg

Ch9262/Zoom Scan (5x5x7)/Cube 0: Measurement grid: dx=8mm, dy=8mm, dz=5mm
Reference Value = 17.54 V/m; Power Drift = 0.04 dB
Peak SAR (extrapolated) = 1.11 W/kg
SAR(1 g) = 0.573 W/kg; SAR(10 g) = 0.338 W/kg
Maximum value of SAR (measured) = 0.816 W/kg



06-1_CDMA2000 BC0_RC3+SO55_Left Cheek_Ch777

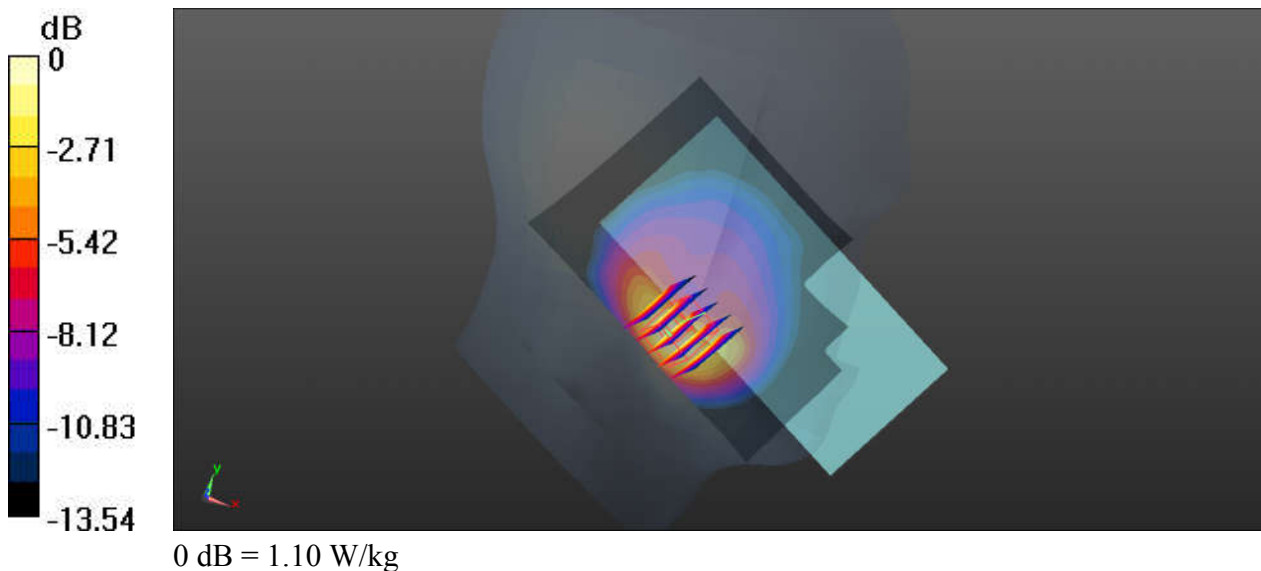
Communication System: UID 0, CDMA2000 (0); Frequency: 848.31 MHz; Duty Cycle: 1:1
Medium: HSL_835_190921 Medium parameters used: $f = 848.5$ MHz; $\sigma = 0.94$ S/m; $\epsilon_r = 41.631$; $\rho = 1000$ kg/m³
Ambient Temperature : 23.5 °C; Liquid Temperature : 22.6 °C

DASY5 Configuration:

- Probe: EX3DV4 - SN3819; ConvF(9.57, 9.57, 9.57); Calibrated: 2019.03.01;
- Sensor-Surface: 2mm (Mechanical Surface Detection)
- Electronics: DAE4 Sn715; Calibrated: 2019.01.23
- Phantom: SAM (Front) with CRP v5.0; Type: QD000P40CD; Serial: TP:1795
- Measurement SW: DASY52, Version 52.8 (8); SEMCAD X Version 14.6.10 (7331)

Ch777/Area Scan (71x101x1): Interpolated grid: dx=15mm, dy=15mm
Maximum value of SAR (interpolated) = 1.11 W/kg

Ch777/Zoom Scan (5x5x7)/Cube 0: Measurement grid: dx=8mm, dy=8mm, dz=5mm
Reference Value = 7.742 V/m; Power Drift = 0.14 dB
Peak SAR (extrapolated) = 1.67 W/kg
SAR(1 g) = 0.849 W/kg; SAR(10 g) = 0.460 W/kg
Maximum value of SAR (measured) = 1.10 W/kg



07-1_CDMA2000 BC10_RC3+SO55_Left Cheek_Ch580

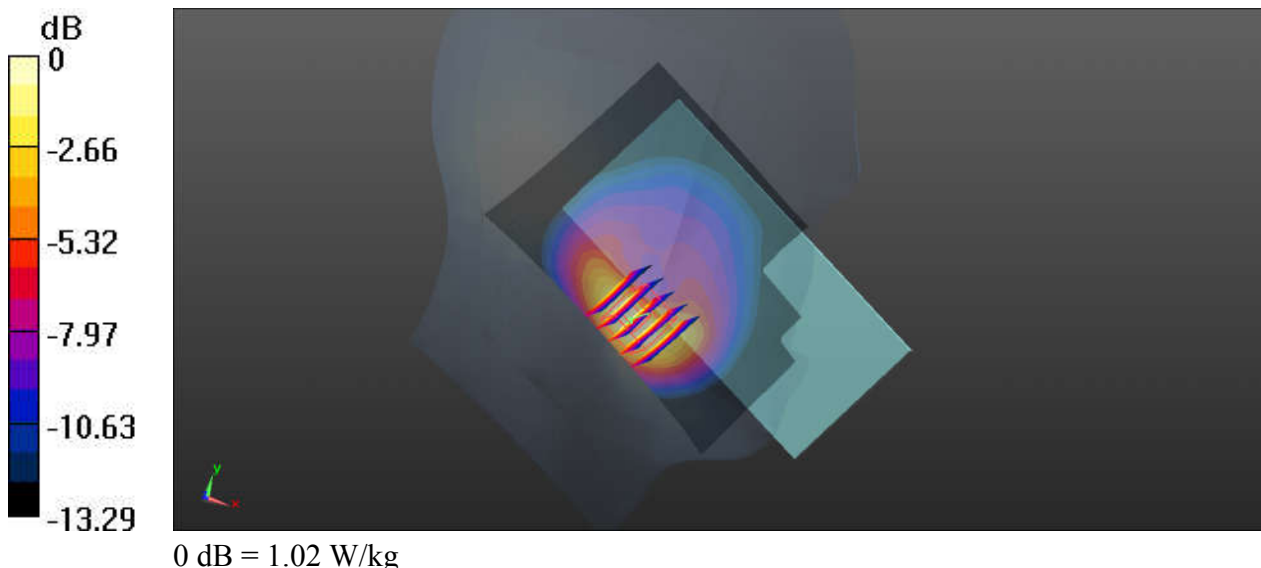
Communication System: UID 0, CDMA2000 (0); Frequency: 820.5 MHz; Duty Cycle: 1:1
Medium: HSL_835_190921 Medium parameters used: $f = 820.5$ MHz; $\sigma = 0.916$ S/m; $\epsilon_r = 41.951$;
 $\rho = 1000$ kg/m³
Ambient Temperature : 23.5 °C; Liquid Temperature : 22.6 °C

DASY5 Configuration:

- Probe: EX3DV4 - SN3819; ConvF(9.57, 9.57, 9.57); Calibrated: 2019.03.01;
- Sensor-Surface: 2mm (Mechanical Surface Detection)
- Electronics: DAE4 Sn715; Calibrated: 2019.01.23
- Phantom: SAM (Front) with CRP v5.0; Type: QD000P40CD; Serial: TP:1795
- Measurement SW: DASY52, Version 52.8 (8); SEMCAD X Version 14.6.10 (7331)

Ch580/Area Scan (71x101x1): Interpolated grid: dx=15mm, dy=15mm
Maximum value of SAR (interpolated) = 1.12 W/kg

Ch580/Zoom Scan (5x5x7)/Cube 0: Measurement grid: dx=8mm, dy=8mm, dz=5mm
Reference Value = 8.004 V/m; Power Drift = 0.09 dB
Peak SAR (extrapolated) = 1.53 W/kg
SAR(1 g) = 0.809 W/kg; SAR(10 g) = 0.444 W/kg
Maximum value of SAR (measured) = 1.02 W/kg



08-1_CDMA2000 BC1_RC3+SO55_Right Cheek_Ch600

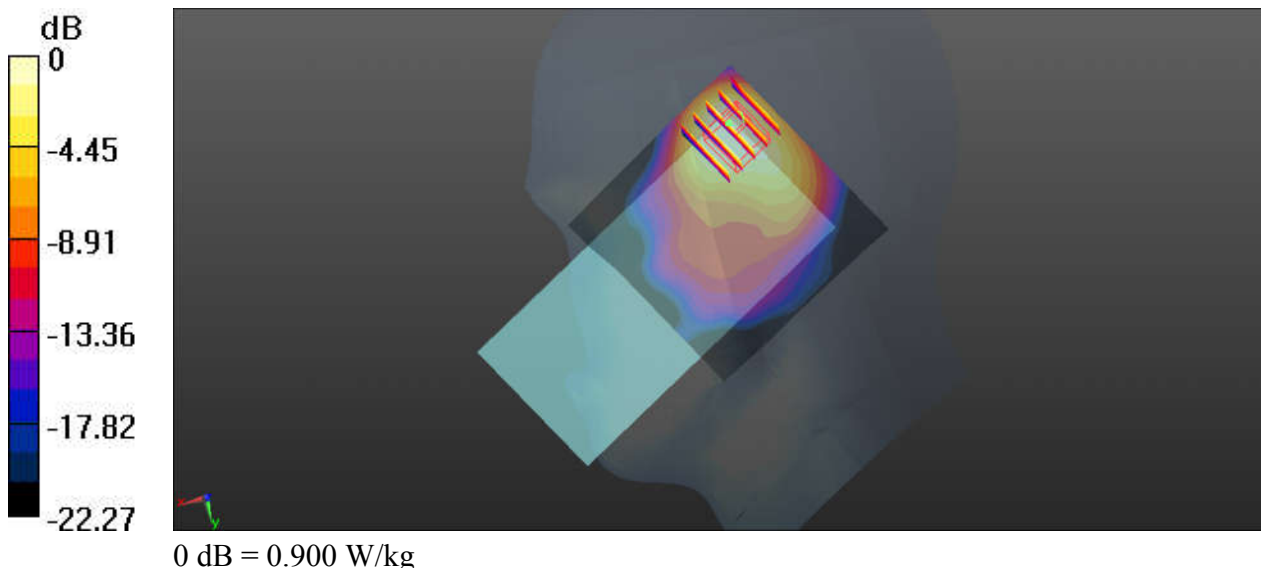
Communication System: UID 0, CDMA2000 (0); Frequency: 1880 MHz; Duty Cycle: 1:1
Medium: HSL_1900_190920 Medium parameters used: $f = 1880$ MHz; $\sigma = 1.435$ S/m; $\epsilon_r = 40.161$;
 $\rho = 1000$ kg/m³
Ambient Temperature : 23.6 °C; Liquid Temperature : 22.7 °C

DASY5 Configuration:

- Probe: EX3DV4 - SN3819; ConvF(8.27, 8.27, 8.27); Calibrated: 2019.03.01;
- Sensor-Surface: 2mm (Mechanical Surface Detection)
- Electronics: DAE4 Sn715; Calibrated: 2019.01.23
- Phantom: SAM (Front) with CRP v5.0; Type: QD000P40CD; Serial: TP:1795
- Measurement SW: DASY52, Version 52.8 (8); SEMCAD X Version 14.6.10 (7331)

Ch600/Area Scan (71x71x1): Interpolated grid: dx=15mm, dy=15mm
Maximum value of SAR (interpolated) = 1.25 W/kg

Ch600/Zoom Scan (5x5x7)/Cube 0: Measurement grid: dx=8mm, dy=8mm, dz=5mm
Reference Value = 18.18 V/m; Power Drift = 0.03 dB
Peak SAR (extrapolated) = 1.22 W/kg
SAR(1 g) = 0.622 W/kg; SAR(10 g) = 0.360 W/kg
Maximum value of SAR (measured) = 0.900 W/kg



09-1_LTE Band 71_20M_QPSK_1RB_0Offset_Left Cheek_Ch133322

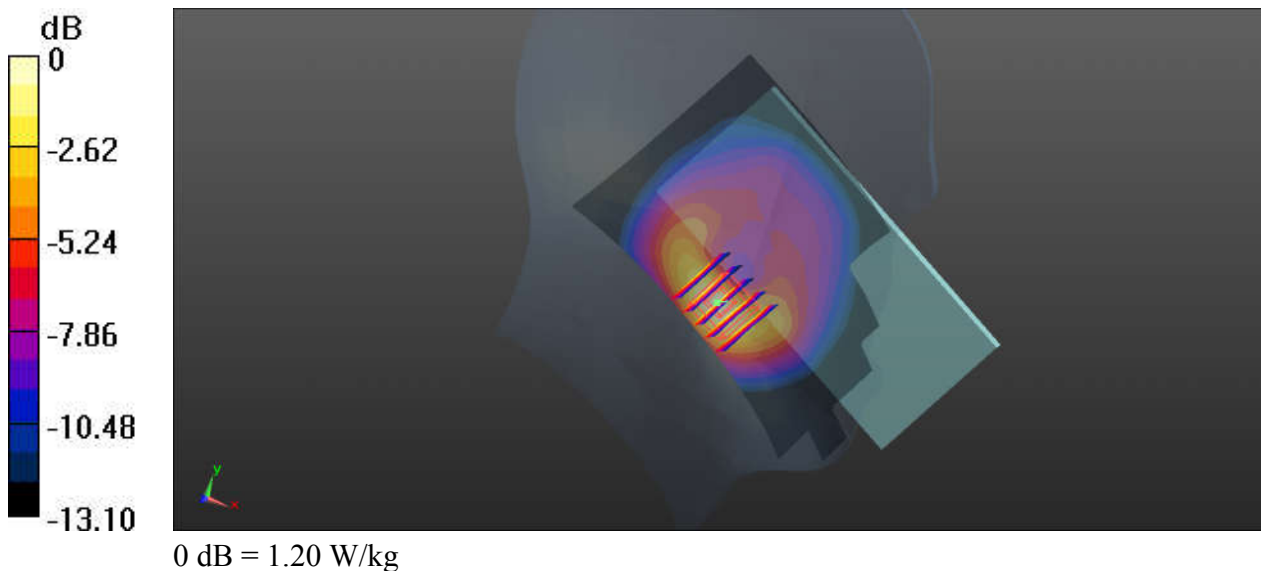
Communication System: UID 0, LTE (0); Frequency: 683 MHz; Duty Cycle: 1:1
Medium: HSL_750_190921 Medium parameters used: $f = 683 \text{ MHz}$; $\sigma = 0.838 \text{ S/m}$; $\epsilon_r = 42.103$; $\rho = 1000 \text{ kg/m}^3$
Ambient Temperature : 23.6 °C; Liquid Temperature : 22.4 °C

DASY5 Configuration:

- Probe: EX3DV4 - SN3819; ConvF(10, 10, 10); Calibrated: 2019.03.01;
- Sensor-Surface: 2mm (Mechanical Surface Detection)
- Electronics: DAE4 Sn715; Calibrated: 2019.01.23
- Phantom: SAM (Front) with CRP v5.0; Type: QD000P40CD; Serial: TP:1795
- Measurement SW: DASY52, Version 52.8 (8); SEMCAD X Version 14.6.10 (7331)

Ch133322/Area Scan (71x121x1): Interpolated grid: $dx=15\text{mm}$, $dy=15\text{mm}$
Maximum value of SAR (interpolated) = 1.18 W/kg

Ch133322/Zoom Scan (5x5x7)/Cube 0: Measurement grid: $dx=8\text{mm}$, $dy=8\text{mm}$, $dz=5\text{mm}$
Reference Value = 12.65 V/m; Power Drift = -0.01 dB
Peak SAR (extrapolated) = 1.60 W/kg
SAR(1 g) = 0.873 W/kg; SAR(10 g) = 0.491 W/kg
Maximum value of SAR (measured) = 1.20 W/kg



10-1_LTE Band 12_10M_QPSK_25RB_0Offset_Left Check_Ch23095

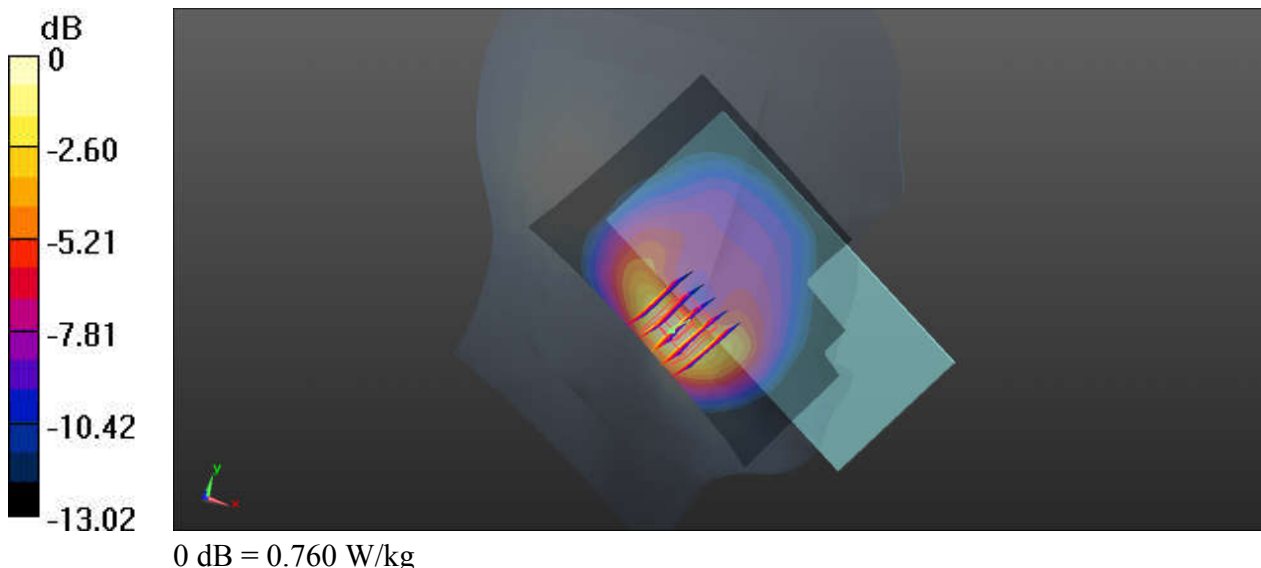
Communication System: UID 0, LTE (0); Frequency: 707.5 MHz; Duty Cycle: 1:1
Medium: HSL_750_190921 Medium parameters used: $f = 707.5$ MHz; $\sigma = 0.858$ S/m; $\epsilon_r = 41.716$;
 $\rho = 1000$ kg/m³
Ambient Temperature : 23.6 °C; Liquid Temperature : 22.4 °C

DASY5 Configuration:

- Probe: EX3DV4 - SN3819; ConvF(10, 10, 10); Calibrated: 2019.03.01;
- Sensor-Surface: 2mm (Mechanical Surface Detection)
- Electronics: DAE4 Sn715; Calibrated: 2019.01.23
- Phantom: SAM (Front) with CRP v5.0; Type: QD000P40CD; Serial: TP:1795
- Measurement SW: DASY52, Version 52.8 (8); SEMCAD X Version 14.6.10 (7331)

Ch23095/Area Scan (71x101x1): Interpolated grid: dx=15mm, dy=15mm
Maximum value of SAR (interpolated) = 0.800 W/kg

Ch23095/Zoom Scan (5x5x7)/Cube 0: Measurement grid: dx=8mm, dy=8mm, dz=5mm
Reference Value = 8.317 V/m; Power Drift = 0.19 dB
Peak SAR (extrapolated) = 1.16 W/kg
SAR(1 g) = 0.601 W/kg; SAR(10 g) = 0.337 W/kg
Maximum value of SAR (measured) = 0.760 W/kg



11-1_LTE Band 13_10M_QPSK_25RB_0Offset_Left Check_Ch23230

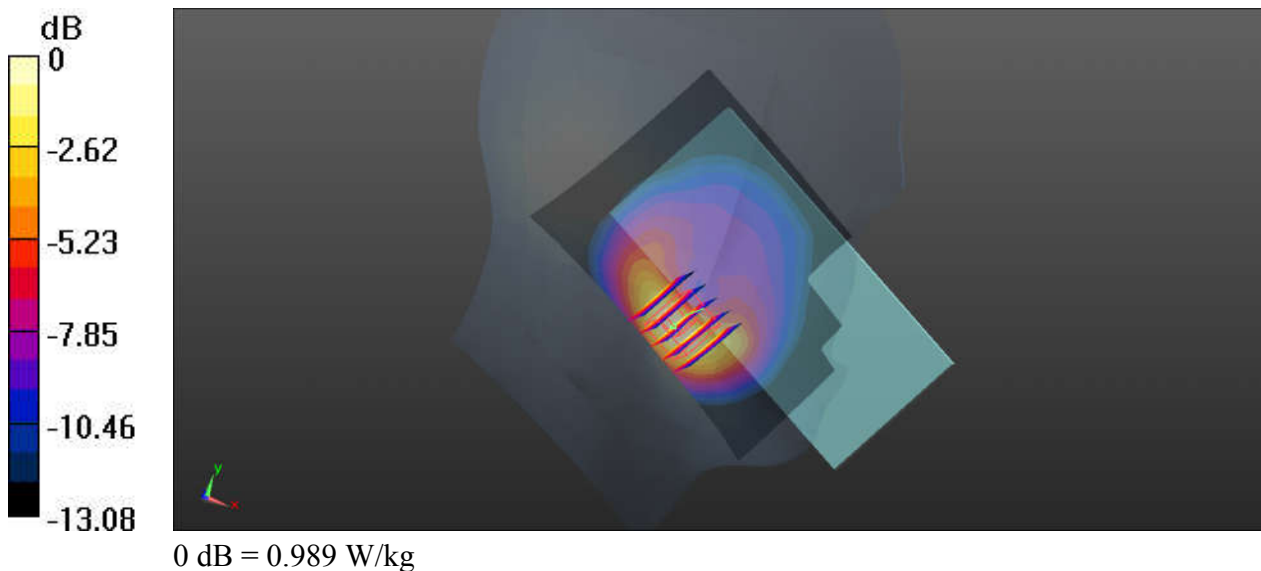
Communication System: UID 0, LTE (0); Frequency: 782 MHz; Duty Cycle: 1:1
Medium: HSL_750_190921 Medium parameters used: $f = 782 \text{ MHz}$; $\sigma = 0.899 \text{ S/m}$; $\epsilon_r = 40.052$; $\rho = 1000 \text{ kg/m}^3$
Ambient Temperature : $23.6 \text{ }^\circ\text{C}$; Liquid Temperature : $22.4 \text{ }^\circ\text{C}$

DASY5 Configuration:

- Probe: EX3DV4 - SN3819; ConvF(10, 10, 10); Calibrated: 2019.03.01;
- Sensor-Surface: 2mm (Mechanical Surface Detection)
- Electronics: DAE4 Sn715; Calibrated: 2019.01.23
- Phantom: SAM (Front) with CRP v5.0; Type: QD000P40CD; Serial: TP:1795
- Measurement SW: DASY52, Version 52.8 (8); SEMCAD X Version 14.6.10 (7331)

Ch23230/Area Scan (71x101x1): Interpolated grid: $dx=15\text{mm}$, $dy=15\text{mm}$
Maximum value of SAR (interpolated) = 1.06 W/kg

Ch23230/Zoom Scan (5x5x7)/Cube 0: Measurement grid: $dx=8\text{mm}$, $dy=8\text{mm}$, $dz=5\text{mm}$
Reference Value = 8.651 V/m ; Power Drift = 0.12 dB
Peak SAR (extrapolated) = 1.53 W/kg
SAR(1 g) = 0.796 W/kg ; SAR(10 g) = 0.440 W/kg
Maximum value of SAR (measured) = 0.989 W/kg



12-1_LTE Band 5_10M_QPSK_25RB_0Offset_Left Check_Ch20525

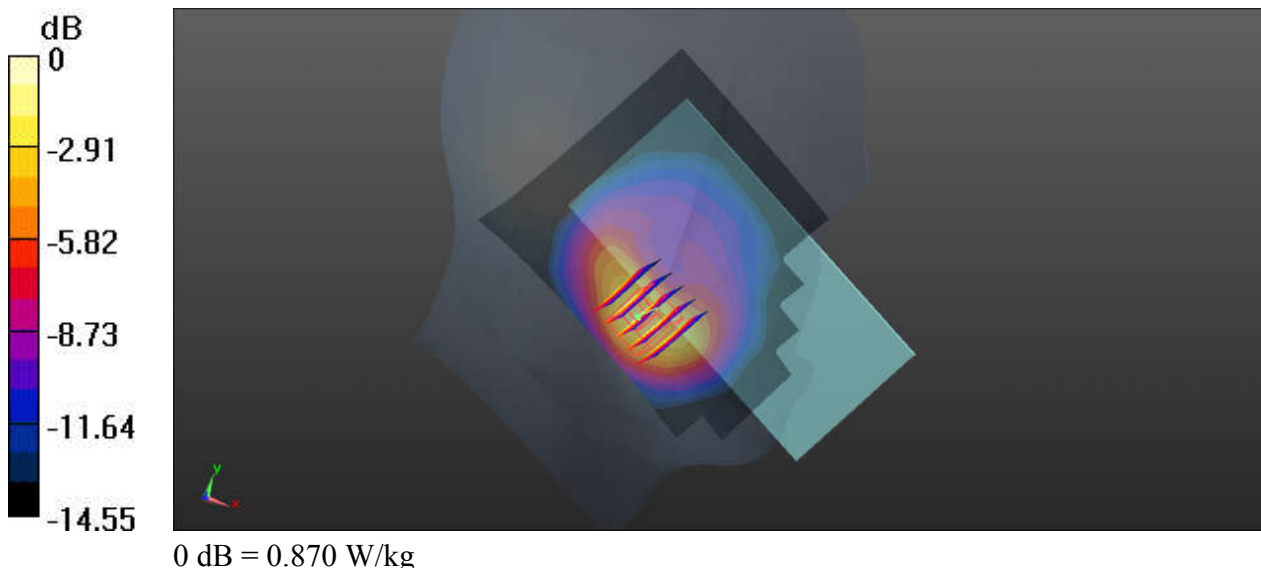
Communication System: UID 0, LTE (0); Frequency: 836.5 MHz; Duty Cycle: 1:1
Medium: HSL_835_190921 Medium parameters used: $f = 836.5$ MHz; $\sigma = 0.93$ S/m; $\epsilon_r = 41.777$; $\rho = 1000$ kg/m³
Ambient Temperature : 23.5 °C; Liquid Temperature : 22.6 °C

DASY5 Configuration:

- Probe: EX3DV4 - SN3819; ConvF(9.57, 9.57, 9.57); Calibrated: 2019.03.01;
- Sensor-Surface: 2mm (Mechanical Surface Detection)
- Electronics: DAE4 Sn715; Calibrated: 2019.01.23
- Phantom: SAM (Front) with CRP v5.0; Type: QD000P40CD; Serial: TP:1795
- Measurement SW: DASY52, Version 52.8 (8); SEMCAD X Version 14.6.10 (7331)

Ch20525/Area Scan (81x101x1): Interpolated grid: dx=15mm, dy=15mm
Maximum value of SAR (interpolated) = 0.678 W/kg

Ch20525/Zoom Scan (5x5x7)/Cube 0: Measurement grid: dx=8mm, dy=8mm, dz=5mm
Reference Value = 6.805 V/m; Power Drift = 0.09 dB
Peak SAR (extrapolated) = 1.20 W/kg
SAR(1 g) = 0.636 W/kg; SAR(10 g) = 0.344 W/kg
Maximum value of SAR (measured) = 0.870 W/kg



13-1_LTE Band 26_15M_QPSK_36RB_0Offset_Left Check_Ch26965

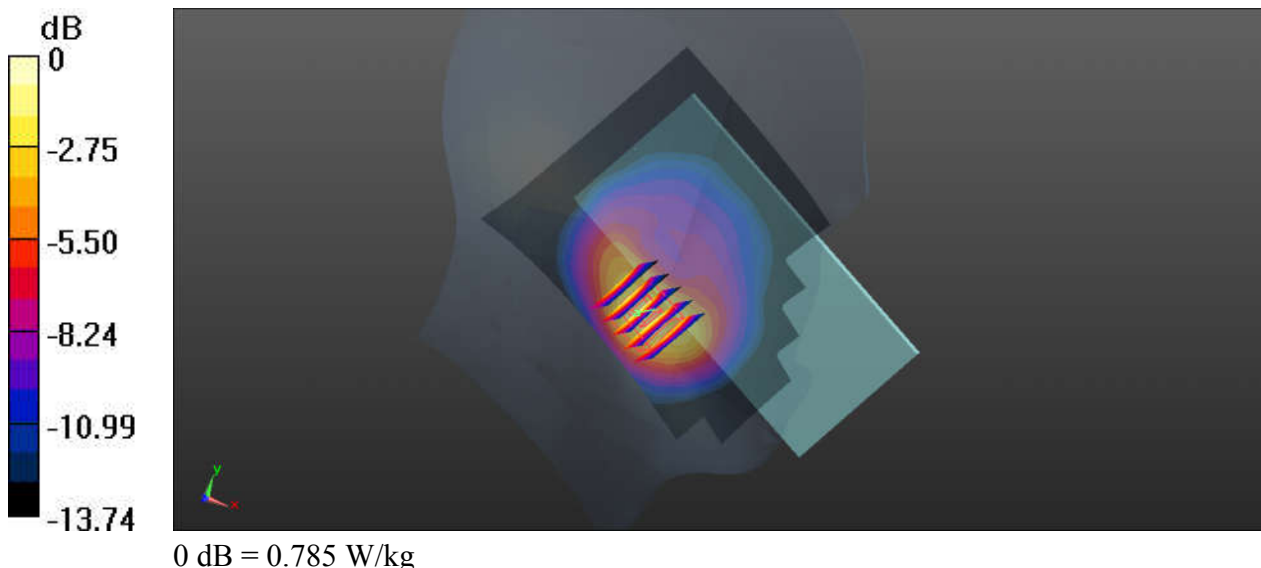
Communication System: UID 0, LTE (0); Frequency: 841.5 MHz; Duty Cycle: 1:1
Medium: HSL_835_190921 Medium parameters used: $f = 841.5$ MHz; $\sigma = 0.934$ S/m; $\epsilon_r = 41.722$;
 $\rho = 1000$ kg/m³
Ambient Temperature : 23.5 °C; Liquid Temperature : 22.6 °C

DASY5 Configuration:

- Probe: EX3DV4 - SN3819; ConvF(9.57, 9.57, 9.57); Calibrated: 2019.03.01;
- Sensor-Surface: 2mm (Mechanical Surface Detection)
- Electronics: DAE4 Sn715; Calibrated: 2019.01.23
- Phantom: SAM (Front) with CRP v5.0; Type: QD000P40CD; Serial: TP:1795
- Measurement SW: DASY52, Version 52.8 (8); SEMCAD X Version 14.6.10 (7331)

Ch26965/Area Scan (81x101x1): Interpolated grid: dx=15mm, dy=15mm
Maximum value of SAR (interpolated) = 0.643 W/kg

Ch26965/Zoom Scan (5x5x7)/Cube 0: Measurement grid: dx=8mm, dy=8mm, dz=5mm
Reference Value = 6.712 V/m; Power Drift = 0.11 dB
Peak SAR (extrapolated) = 1.19 W/kg
SAR(1 g) = 0.604 W/kg; SAR(10 g) = 0.325 W/kg
Maximum value of SAR (measured) = 0.785 W/kg



14-1_LTE Band 66_20M_QPSK_100RB_0Offset_Right Check_Ch132322

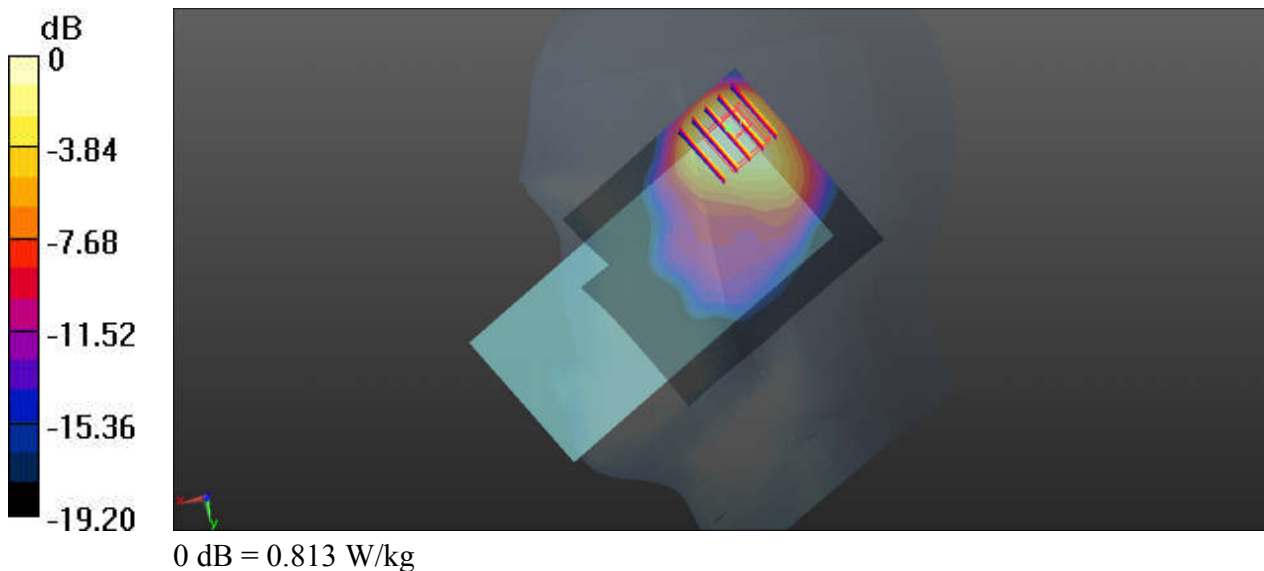
Communication System: UID 0, LTE (0); Frequency: 1745 MHz;Duty Cycle: 1:1
Medium: HSL_1750_190920 Medium parameters used: $f = 1745$ MHz; $\sigma = 1.376$ S/m; $\epsilon_r = 41.589$;
 $\rho = 1000$ kg/m³
Ambient Temperature : 23.7 °C ; Liquid Temperature : 22.5 °C

DASY5 Configuration:

- Probe: EX3DV4 - SN3819; ConvF(8.54, 8.54, 8.54); Calibrated: 2019.03.01;
- Sensor-Surface: 2mm (Mechanical Surface Detection)
- Electronics: DAE4 Sn715; Calibrated: 2019.01.23
- Phantom: SAM (Front) with CRP v5.0; Type: QD000P40CD; Serial: TP:1795
- Measurement SW: DASY52, Version 52.8 (8); SEMCAD X Version 14.6.10 (7331)

Ch132322/Area Scan (71x81x1): Interpolated grid: dx=15mm, dy=15mm
Maximum value of SAR (interpolated) = 1.08 W/kg

Ch132322/Zoom Scan (5x5x7)/Cube 0: Measurement grid: dx=8mm, dy=8mm, dz=5mm
Reference Value = 15.82 V/m; Power Drift = 0.06 dB
Peak SAR (extrapolated) = 1.07 W/kg
SAR(1 g) = 0.555 W/kg; SAR(10 g) = 0.316 W/kg
Maximum value of SAR (measured) = 0.813 W/kg



15-1_LTE Band 25_20M_QPSK_100RB_0Offset_Right Check_Ch26140

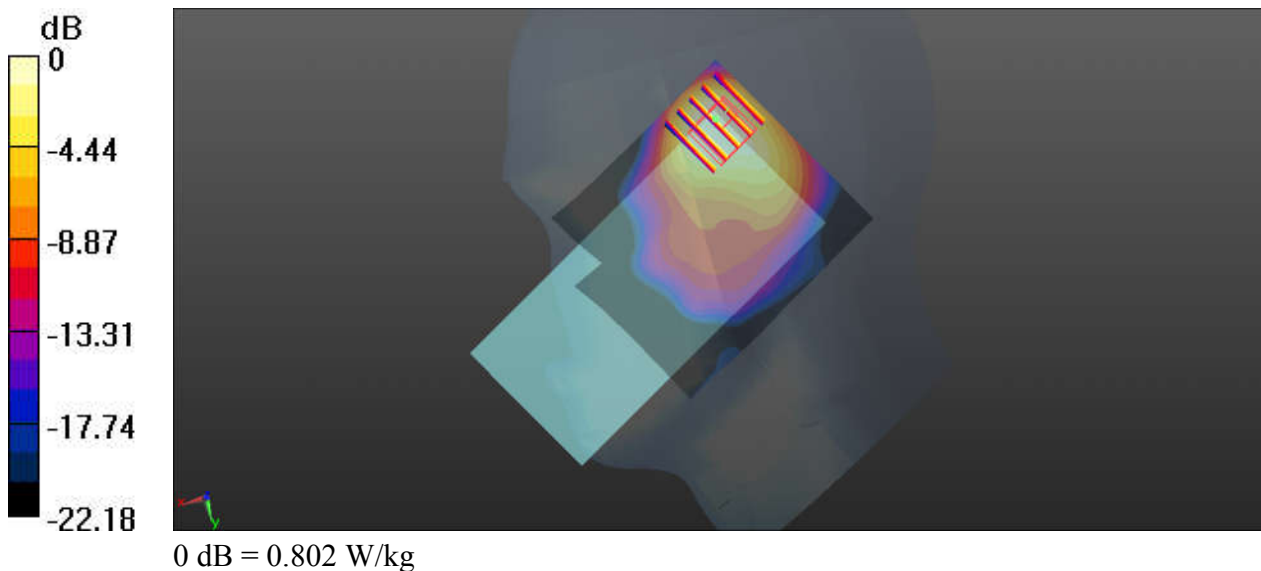
Communication System: UID 0, LTE (0); Frequency: 1860 MHz;Duty Cycle: 1:1
Medium: HSL_1900_190920 Medium parameters used: $f = 1860$ MHz; $\sigma = 1.414$ S/m; $\epsilon_r = 40.253$;
 $\rho = 1000$ kg/m³
Ambient Temperature : 23.6 °C; Liquid Temperature : 22.7 °C

DASY5 Configuration:

- Probe: EX3DV4 - SN3819; ConvF(8.27, 8.27, 8.27); Calibrated: 2019.03.01;
- Sensor-Surface: 2mm (Mechanical Surface Detection)
- Electronics: DAE4 Sn715; Calibrated: 2019.01.23
- Phantom: SAM (Front) with CRP v5.0; Type: QD000P40CD; Serial: TP:1795
- Measurement SW: DASY52, Version 52.8 (8); SEMCAD X Version 14.6.10 (7331)

Ch26140/Area Scan (71x81x1): Interpolated grid: dx=15mm, dy=15mm
Maximum value of SAR (interpolated) = 1.12 W/kg

Ch26140/Zoom Scan (5x5x7)/Cube 0: Measurement grid: dx=8mm, dy=8mm, dz=5mm
Reference Value = 17.29 V/m; Power Drift = 0.02 dB
Peak SAR (extrapolated) = 1.10 W/kg
SAR(1 g) = 0.562 W/kg; SAR(10 g) = 0.327 W/kg
Maximum value of SAR (measured) = 0.802 W/kg



16-1_LTE Band 30_10M_QPSK_25RB_0Offset_Right Tilted_Ch27710

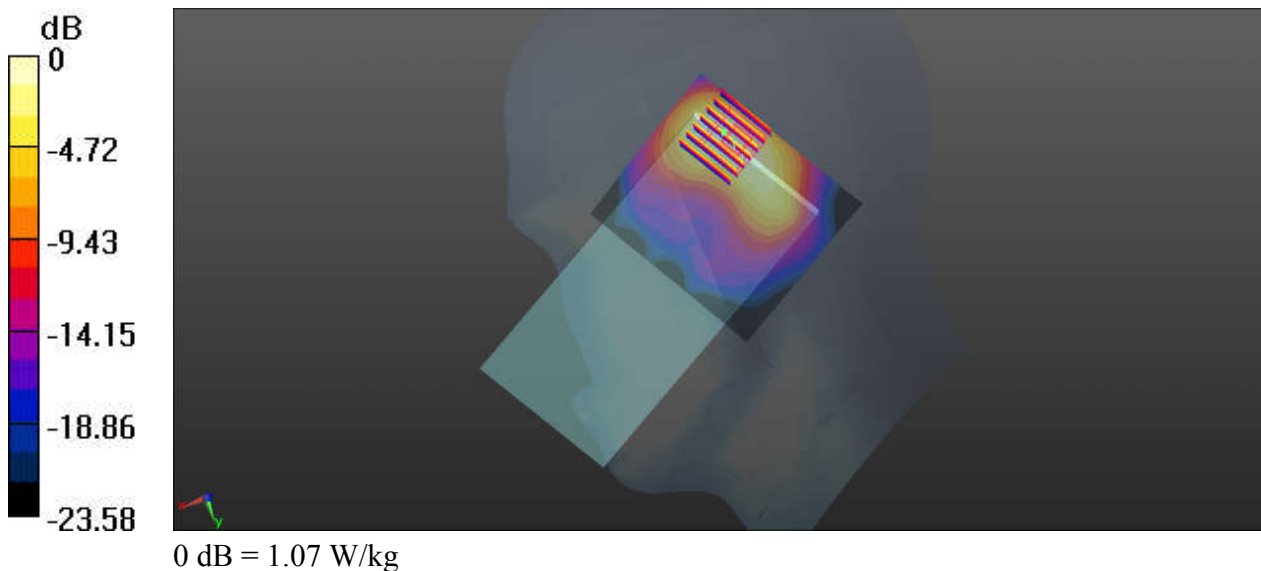
Communication System: UID 0, LTE (0); Frequency: 2310 MHz; Duty Cycle: 1:1
Medium: HSL_2300_190920 Medium parameters used: $f = 2310$ MHz; $\sigma = 1.682$ S/m; $\epsilon_r = 38.704$;
 $\rho = 1000$ kg/m³
Ambient Temperature : 23.4 °C; Liquid Temperature : 22.5 °C

DASY5 Configuration:

- Probe: EX3DV4 - SN3819; ConvF(7.64, 7.64, 7.64); Calibrated: 2019.03.01;
- Sensor-Surface: 3mm (Mechanical Surface Detection)
- Electronics: DAE4 Sn715; Calibrated: 2019.01.23
- Phantom: SAM (Front) with CRP v5.0; Type: QD000P40CD; Serial: TP:1795
- Measurement SW: DASY52, Version 52.8 (8); SEMCAD X Version 14.6.10 (7331)

Ch27710/Area Scan (81x71x1): Interpolated grid: dx=12mm, dy=12mm
Maximum value of SAR (interpolated) = 1.18 W/kg

Ch27710/Zoom Scan (7x7x7)/Cube 0: Measurement grid: dx=5mm, dy=5mm, dz=5mm
Reference Value = 21.45 V/m; Power Drift = 0.05 dB
Peak SAR (extrapolated) = 1.91 W/kg
SAR(1 g) = 0.794 W/kg; SAR(10 g) = 0.375 W/kg
Maximum value of SAR (measured) = 1.07 W/kg



17-1_LTE Band 7_20M_QPSK_50RB_0Offset_Right Check_Ch20850

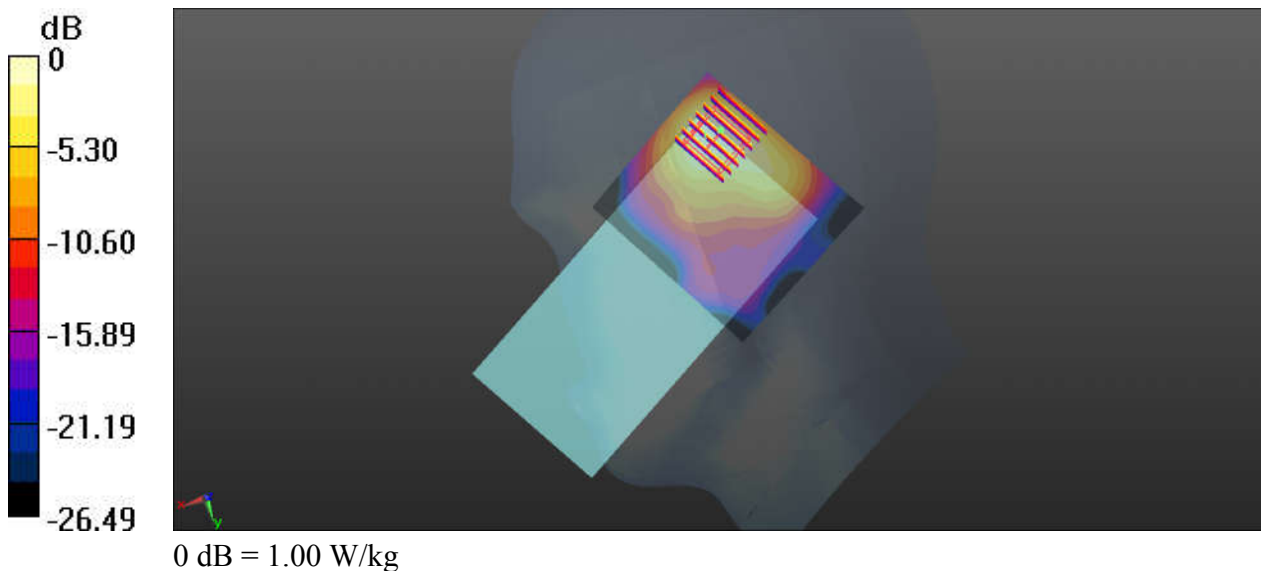
Communication System: UID 0, LTE (0); Frequency: 2510 MHz; Duty Cycle: 1:1
Medium: HSL_2600_190920 Medium parameters used: $f = 2510$ MHz; $\sigma = 1.95$ S/m; $\epsilon_r = 38.653$; $\rho = 1000$ kg/m³
Ambient Temperature : 23.5 °C; Liquid Temperature : 22.4 °C

DASY5 Configuration:

- Probe: EX3DV4 - SN3819; ConvF(7.06, 7.06, 7.06); Calibrated: 2019.03.01;
- Sensor-Surface: 3mm (Mechanical Surface Detection)
- Electronics: DAE4 Sn715; Calibrated: 2019.01.23
- Phantom: SAM (Front) with CRP v5.0; Type: QD000P40CD; Serial: TP:1795
- Measurement SW: DASY52, Version 52.8 (8); SEMCAD X Version 14.6.10 (7331)

Ch20850/Area Scan (81x71x1): Interpolated grid: dx=12mm, dy=12mm
Maximum value of SAR (interpolated) = 1.07 W/kg

Ch20850/Zoom Scan (7x7x7)/Cube 0: Measurement grid: dx=5mm, dy=5mm, dz=5mm
Reference Value = 16.01 V/m; Power Drift = 0.03 dB
Peak SAR (extrapolated) = 1.82 W/kg
SAR(1 g) = 0.749 W/kg; SAR(10 g) = 0.352 W/kg
Maximum value of SAR (measured) = 1.00 W/kg



18-1_LTE Band 41_20M_QPSK_50RB_24Offset_Right Check_Ch41490

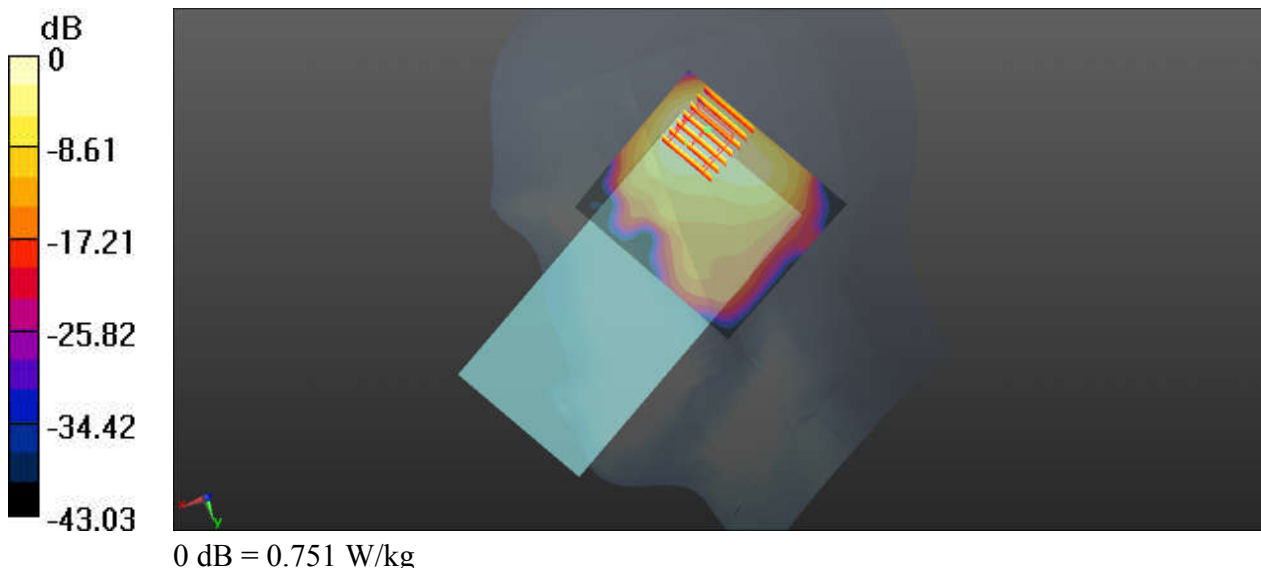
Communication System: UID 0, LTE (0); Frequency: 2680 MHz; Duty Cycle: 1:2.331
Medium: HSL_2600_190920 Medium parameters used: $f = 2680$ MHz; $\sigma = 2.152$ S/m; $\epsilon_r = 38.052$;
 $\rho = 1000$ kg/m³
Ambient Temperature : 23.5 °C; Liquid Temperature : 22.4 °C

DASY5 Configuration:

- Probe: EX3DV4 - SN3819; ConvF(7.06, 7.06, 7.06); Calibrated: 2019.03.01;
- Sensor-Surface: 3mm (Mechanical Surface Detection)
- Electronics: DAE4 Sn715; Calibrated: 2019.01.23
- Phantom: SAM (Front) with CRP v5.0; Type: QD000P40CD; Serial: TP:1795
- Measurement SW: DASY52, Version 52.8 (8); SEMCAD X Version 14.6.10 (7331)

Ch41490/Area Scan (81x71x1): Interpolated grid: dx=12mm, dy=12mm
Maximum value of SAR (interpolated) = 0.830 W/kg

Ch41490/Zoom Scan (7x7x7)/Cube 0: Measurement grid: dx=5mm, dy=5mm, dz=5mm
Reference Value = 12.36 V/m; Power Drift = 0.11 dB
Peak SAR (extrapolated) = 1.42 W/kg
SAR(1 g) = 0.547 W/kg; SAR(10 g) = 0.250 W/kg
Maximum value of SAR (measured) = 0.751 W/kg



19-1_LTE Band 48_20M_QPSK_50RB_24Offset_Right Check_Ch56640

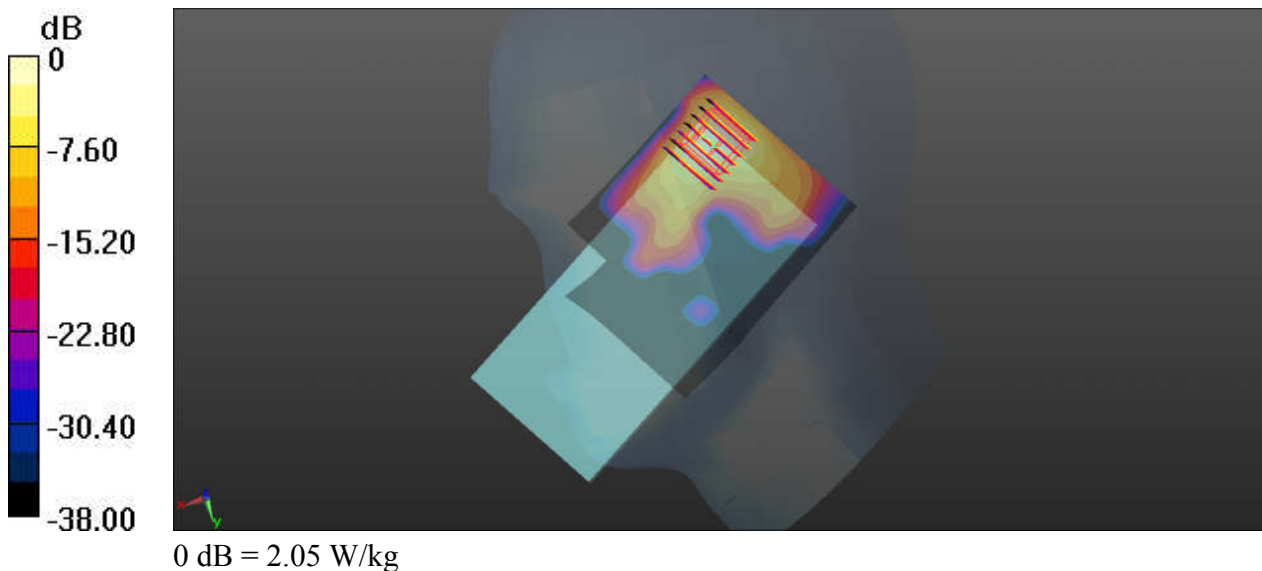
Communication System: UID 0, LTE (0); Frequency: 3690 MHz; Duty Cycle: 1:1.59
Medium: HSL_3500-3700_190922 Medium parameters used: $f = 3690$ MHz; $\sigma = 3.046$ S/m; $\epsilon_r = 38.387$; $\rho = 1000$ kg/m³
Ambient Temperature : 23.3 °C; Liquid Temperature : 22.5 °C

DASY5 Configuration:

- Probe: EX3DV4 - SN3819; ConvF(6.67, 6.67, 6.67); Calibrated: 2019.03.01;
- Sensor-Surface: 1.4mm (Mechanical Surface Detection)
- Electronics: DAE4 Sn715; Calibrated: 2019.01.23
- Phantom: SAM (Front) with CRP v5.0; Type: QD000P40CD; Serial: TP:1795
- Measurement SW: DASY52, Version 52.8 (8); SEMCAD X Version 14.6.10 (7331)

Ch56640/Area Scan (81x101x1): Interpolated grid: dx=12mm, dy=12mm
Maximum value of SAR (interpolated) = 1.86 W/kg

Ch56640/Zoom Scan (7x7x7)/Cube 0: Measurement grid: dx=5mm, dy=5mm, dz=1.4mm
Reference Value = 11.14 V/m; Power Drift = 0.04 dB
Peak SAR (extrapolated) = 2.88 W/kg
SAR(1 g) = 0.964 W/kg; SAR(10 g) = 0.322 W/kg
Maximum value of SAR (measured) = 2.05 W/kg



20-1_WLAN2.4GHz_802.11b 1Mbps_Left Check_Ch11

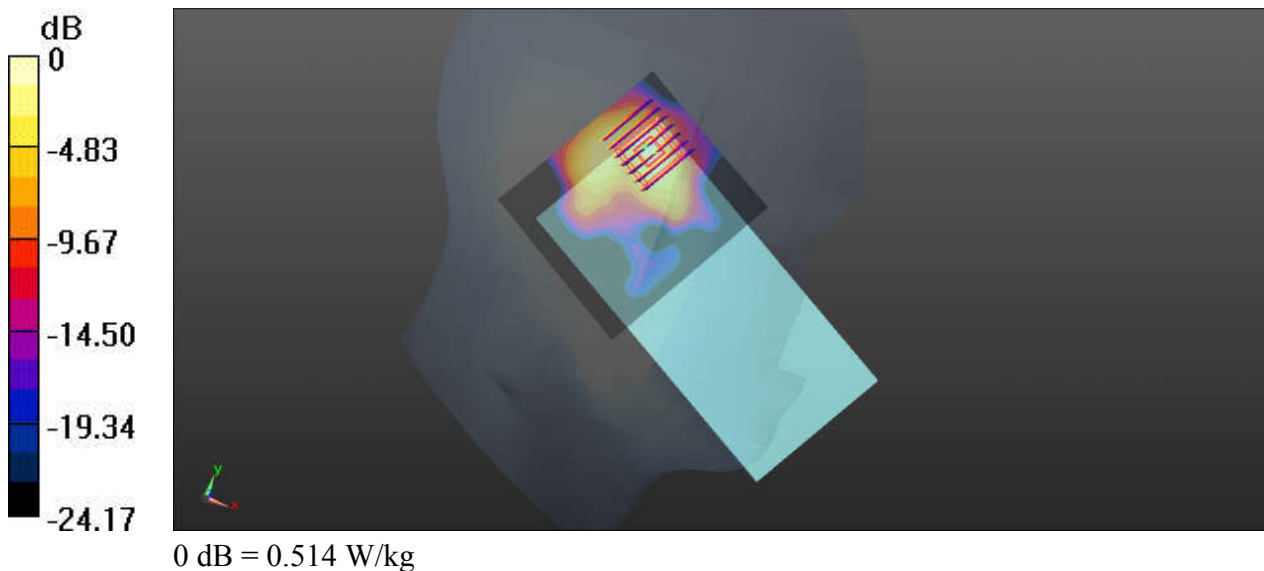
Communication System: UID 0, WIFI (0); Frequency: 2462 MHz; Duty Cycle: 1:1.007
Medium: HSL_2450_190920 Medium parameters used: $f = 2462$ MHz; $\sigma = 1.87$ S/m; $\epsilon_r = 37.627$; $\rho = 1000$ kg/m³
Ambient Temperature : 23.4 °C; Liquid Temperature : 22.6 °C

DASY5 Configuration:

- Probe: EX3DV4 - SN3819; ConvF(7.21, 7.21, 7.21); Calibrated: 2019.03.01;
- Sensor-Surface: 3mm (Mechanical Surface Detection)
- Electronics: DAE4 Sn715; Calibrated: 2019.01.23
- Phantom: SAM (Front) with CRP v5.0; Type: QD000P40CD; Serial: TP:1795
- Measurement SW: DASY52, Version 52.8 (8); SEMCAD X Version 14.6.10 (7331)

Ch11/Area Scan (81x71x1): Interpolated grid: dx=12mm, dy=12mm
Maximum value of SAR (interpolated) = 0.503 W/kg

Ch11/Zoom Scan (7x7x7)/Cube 0: Measurement grid: dx=5mm, dy=5mm, dz=5mm
Reference Value = 11.13 V/m; Power Drift = 0.16 dB
Peak SAR (extrapolated) = 0.878 W/kg
SAR(1 g) = 0.371 W/kg; SAR(10 g) = 0.141 W/kg
Maximum value of SAR (measured) = 0.514 W/kg



21-1_Bluetooth_DH5 1Mbps_Left Cheek_Ch78

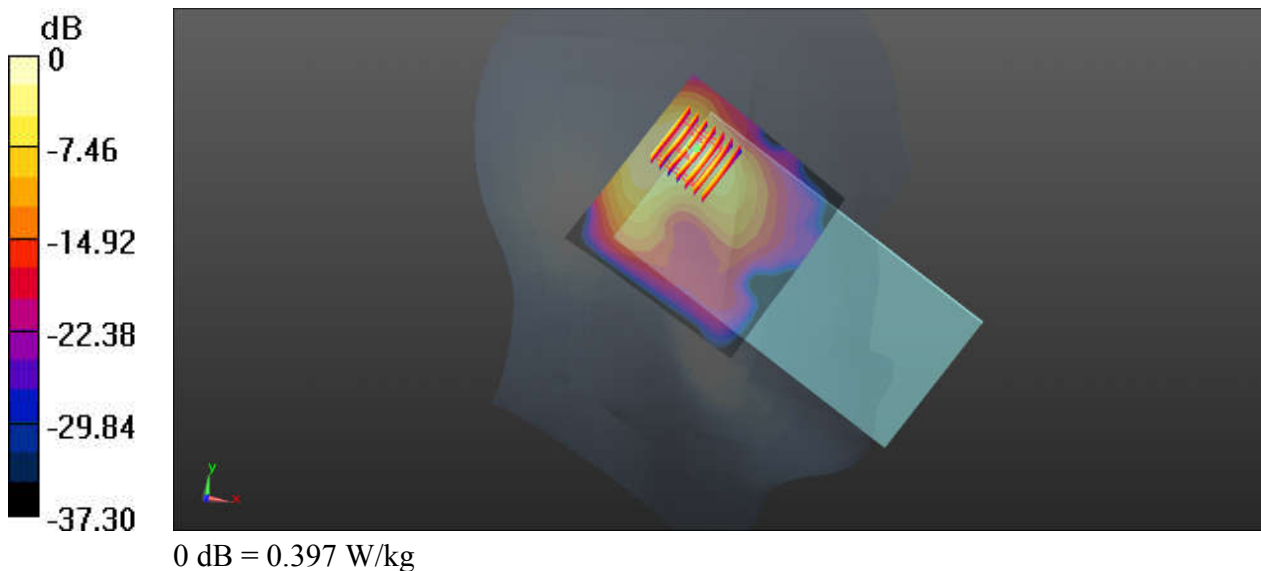
Communication System: UID 0, Bluetooth (0); Frequency: 2480 MHz; Duty Cycle: 1:1.301
Medium: HSL_2450_191008 Medium parameters used: $f = 2480$ MHz; $\sigma = 1.776$ S/m; $\epsilon_r = 40.629$;
 $\rho = 1000$ kg/m³
Ambient Temperature : 23.6 °C; Liquid Temperature : 22.6 °C

DASY5 Configuration:

- Probe: EX3DV4 - SN3819; ConvF(7.21, 7.21, 7.21); Calibrated: 2019.03.01;
- Sensor-Surface: 2mm (Mechanical Surface Detection)
- Electronics: DAE4 Sn715; Calibrated: 2019.01.23
- Phantom: SAM (Front) with CRP v5.0; Type: QD000P40CD; Serial: TP:1795
- Measurement SW: DASY52, Version 52.8 (8); SEMCAD X Version 14.6.10 (7331)

Ch78/Area Scan (81x81x1): Interpolated grid: dx=12mm, dy=12mm
Maximum value of SAR (interpolated) = 0.390 W/kg

Ch78/Zoom Scan (7x7x7)/Cube 0: Measurement grid: dx=5mm, dy=5mm, dz=5mm
Reference Value = 7.818 V/m; Power Drift = -0.03 dB
Peak SAR (extrapolated) = 0.621 W/kg
SAR(1 g) = 0.284 W/kg; SAR(10 g) = 0.114 W/kg
Maximum value of SAR (measured) = 0.397 W/kg



22-1_WLAN5GHz_802.11n-HT40 MCS0_Left Cheek_Ch62

Communication System: UID 0, WIFI (0); Frequency: 5310 MHz; Duty Cycle: 1:1.038
Medium: HSL_5250_190922 Medium parameters used: $f = 5310 \text{ MHz}$; $\sigma = 4.654 \text{ S/m}$; $\epsilon_r = 36.58$; $\rho = 1000 \text{ kg/m}^3$
Ambient Temperature : $23.6 \text{ }^\circ\text{C}$; Liquid Temperature : $22.8 \text{ }^\circ\text{C}$

DASY5 Configuration:

- Probe: EX3DV4 - SN3819; ConvF(5.07, 5.07, 5.07); Calibrated: 2019.03.01;
- Sensor-Surface: 1.4mm (Mechanical Surface Detection)
- Electronics: DAE4 Sn715; Calibrated: 2019.01.23
- Phantom: SAM (Front) with CRP v5.0; Type: QD000P40CD; Serial: TP:1795
- Measurement SW: DASY52, Version 52.8 (8); SEMCAD X Version 14.6.10 (7331)

Ch62/Area Scan (101x91x1): Interpolated grid: dx=10mm, dy=10mm

Maximum value of SAR (interpolated) = 0.709 W/kg

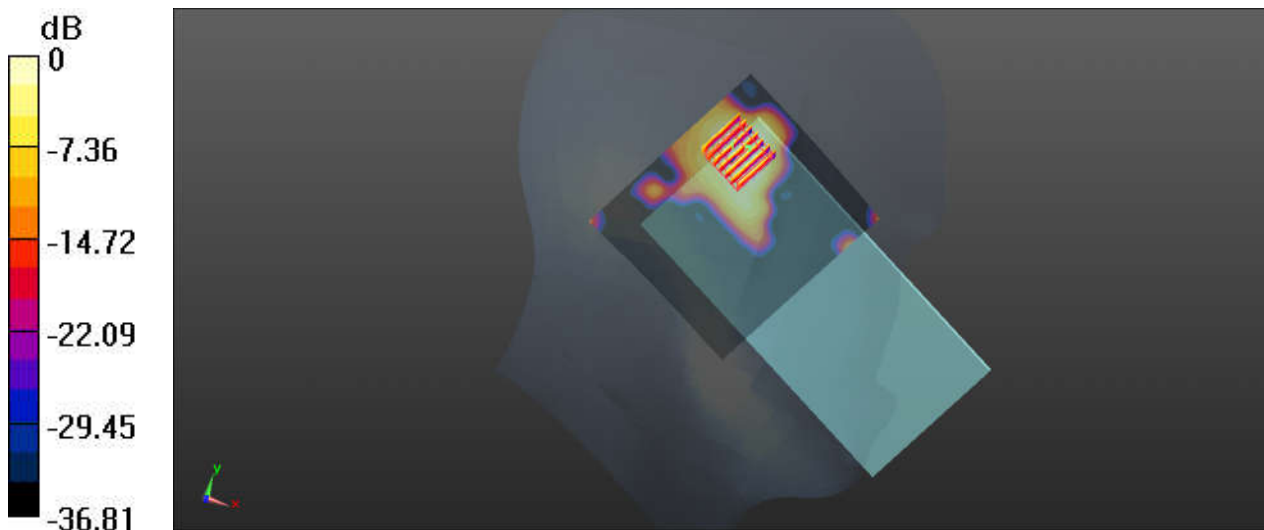
Ch62/Zoom Scan (7x7x7)/Cube 0: Measurement grid: dx=4mm, dy=4mm, dz=1.4mm

Reference Value = 4.805 V/m ; Power Drift = -0.16 dB

Peak SAR (extrapolated) = 1.12 W/kg

SAR(1 g) = 0.271 W/kg ; SAR(10 g) = 0.106 W/kg

Maximum value of SAR (measured) = 0.639 W/kg



0 dB = 0.639 W/kg

23-1_WLAN5GHz_802.11n-HT40 MCS0_Left Cheek_Ch110

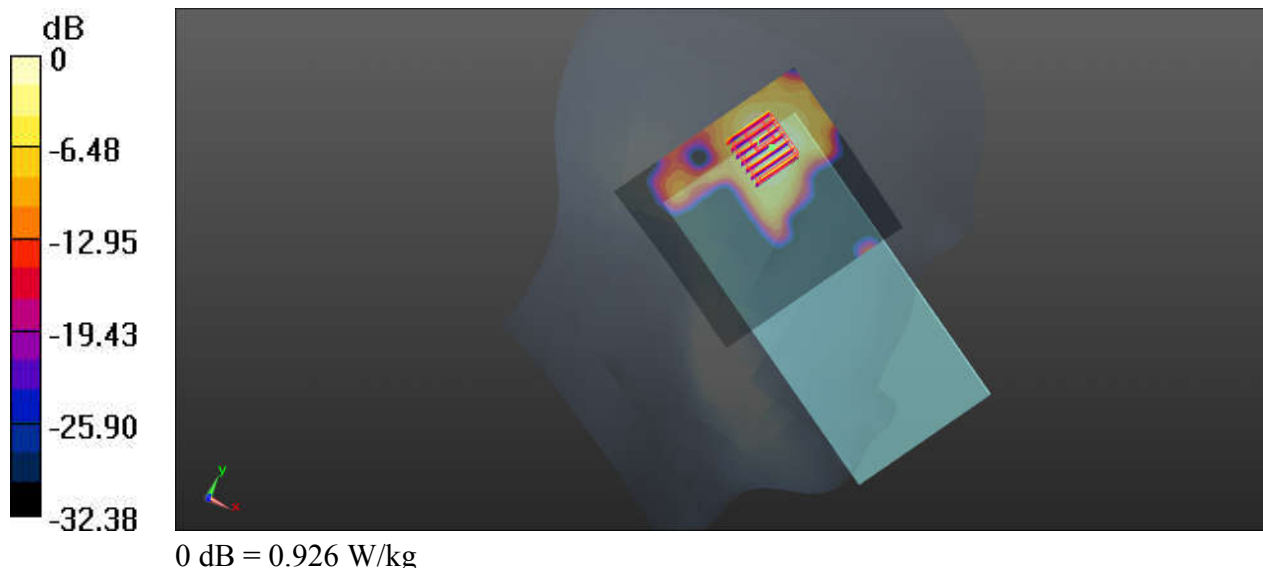
Communication System: UID 0, WIFI (0); Frequency: 5550 MHz; Duty Cycle: 1:1.038
 Medium: HSL_5600_190922 Medium parameters used: $f = 5550$ MHz; $\sigma = 4.938$ S/m; $\epsilon_r = 36.216$;
 $\rho = 1000$ kg/m³
 Ambient Temperature : 23.5 °C; Liquid Temperature : 22.7 °C

DASY5 Configuration:

- Probe: EX3DV4 - SN3819; ConvF(4.7, 4.7, 4.7); Calibrated: 2019.03.01;
- Sensor-Surface: 1.4mm (Mechanical Surface Detection)
- Electronics: DAE4 Sn715; Calibrated: 2019.01.23
- Phantom: SAM (Front) with CRP v5.0; Type: QD000P40CD; Serial: TP:1795
- Measurement SW: DASY52, Version 52.8 (8); SEMCAD X Version 14.6.10 (7331)

Ch110/Area Scan (101x91x1): Interpolated grid: dx=10mm, dy=10mm
 Maximum value of SAR (interpolated) = 0.787 W/kg

Ch110/Zoom Scan (7x7x7)/Cube 0: Measurement grid: dx=4mm, dy=4mm, dz=1.4mm
 Reference Value = 4.237 V/m; Power Drift = 0.04 dB
 Peak SAR (extrapolated) = 1.67 W/kg
SAR(1 g) = 0.377 W/kg; SAR(10 g) = 0.142 W/kg
 Maximum value of SAR (measured) = 0.926 W/kg



24-1_WLAN5GHz_802.11n-HT40 MCS0_Left Cheek_Ch159

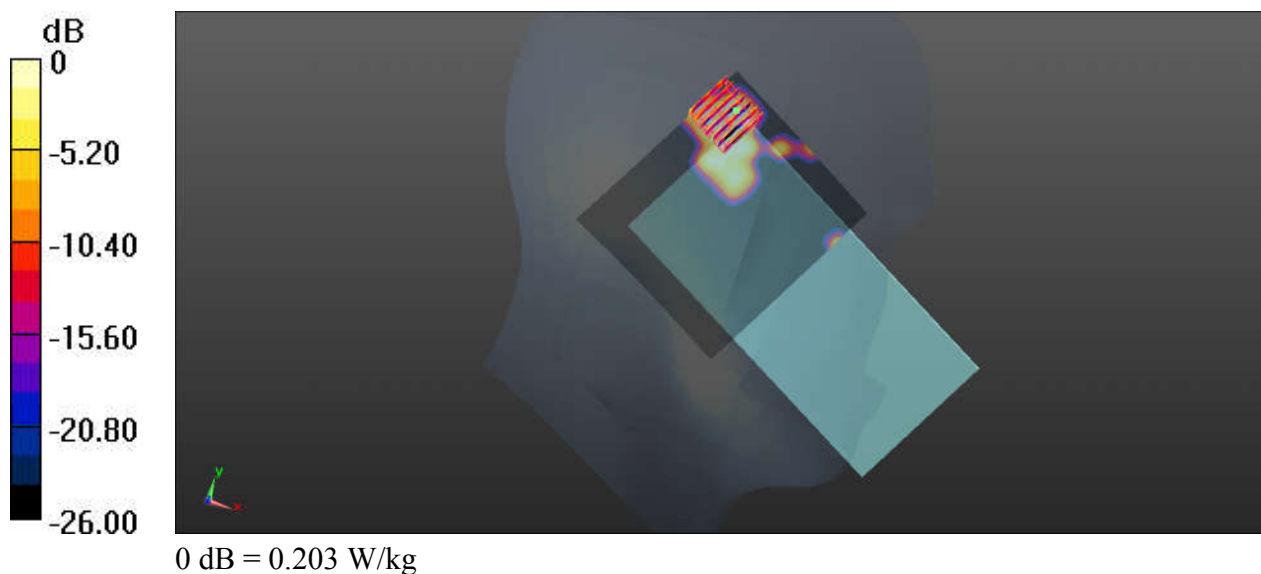
Communication System: UID 0, WIFI (0); Frequency: 5795 MHz; Duty Cycle: 1:1.038
Medium: HSL_5750_190922 Medium parameters used: $f = 5795$ MHz; $\sigma = 5.214$ S/m; $\epsilon_r = 35.803$;
 $\rho = 1000$ kg/m³
Ambient Temperature : 23.8 °C; Liquid Temperature : 22.5 °C

DASY5 Configuration:

- Probe: EX3DV4 - SN3819; ConvF(4.77, 4.77, 4.77); Calibrated: 2019.03.01;
- Sensor-Surface: 1.4mm (Mechanical Surface Detection)
- Electronics: DAE4 Sn715; Calibrated: 2019.01.23
- Phantom: SAM (Front) with CRP v5.0; Type: QD000P40CD; Serial: TP:1795
- Measurement SW: DASY52, Version 52.8 (8); SEMCAD X Version 14.6.10 (7331)

Ch159/Area Scan (101x91x1): Interpolated grid: dx=10mm, dy=10mm
Maximum value of SAR (interpolated) = 0.371 W/kg

Ch159/Zoom Scan (7x7x7)/Cube 0: Measurement grid: dx=4mm, dy=4mm, dz=1.4mm
Reference Value = 1.946 V/m; Power Drift = 0.04 dB
Peak SAR (extrapolated) = 0.318 W/kg
SAR(1 g) = 0.061 W/kg; SAR(10 g) = 0.020 W/kg
Maximum value of SAR (measured) = 0.203 W/kg



25-1_GSM850_GPRS(3 Tx slots)_Left Side_10mm_Ch251

Communication System: UID 0, GPRS/EDGE11 (0); Frequency: 848.8 MHz; Duty Cycle: 1:2.77
Medium: HSL_835_190921 Medium parameters used: $f = 849$ MHz; $\sigma = 0.941$ S/m; $\epsilon_r = 41.625$; $\rho = 1000$ kg/m³

Ambient Temperature : 23.5 °C; Liquid Temperature : 22.6 °C

DASY5 Configuration:

- Probe: EX3DV4 - SN3819; ConvF(9.57, 9.57, 9.57); Calibrated: 2019.03.01;
- Sensor-Surface: 2mm (Mechanical Surface Detection)
- Electronics: DAE4 Sn715; Calibrated: 2019.01.23
- Phantom: SAM (Front) with CRP v5.0; Type: QD000P40CD; Serial: TP:1795
- Measurement SW: DASY52, Version 52.8 (8); SEMCAD X Version 14.6.10 (7331)

Ch251/Area Scan (41x81x1): Interpolated grid: dx=15mm, dy=15mm

Maximum value of SAR (interpolated) = 0.554 W/kg

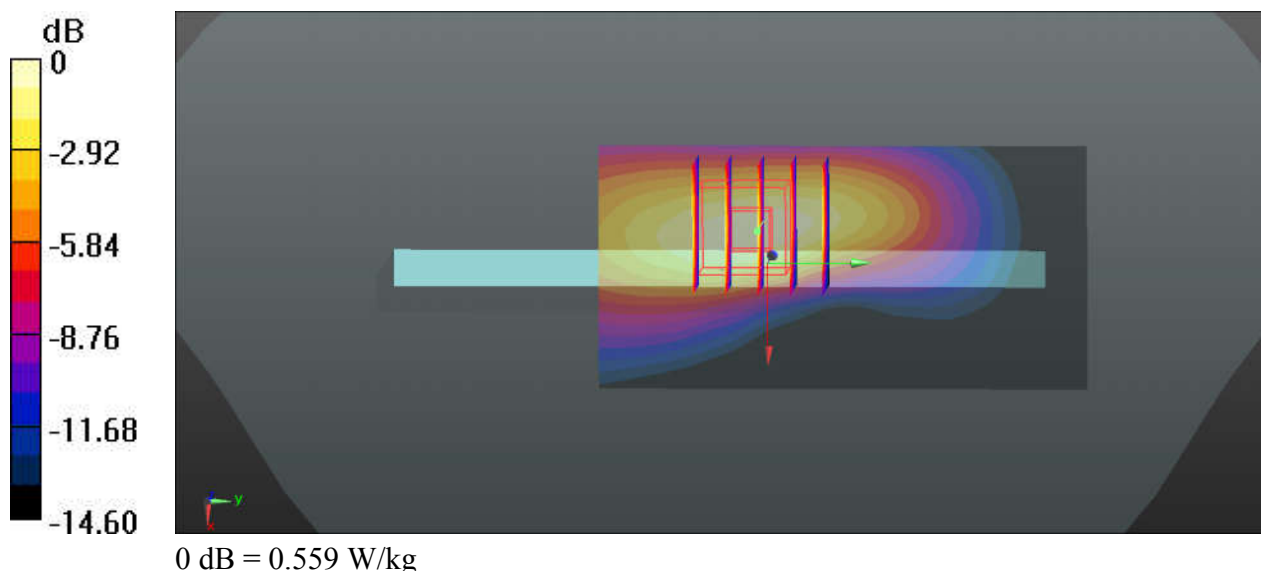
Ch251/Zoom Scan (5x5x7)/Cube 0: Measurement grid: dx=8mm, dy=8mm, dz=5mm

Reference Value = 19.38 V/m; Power Drift = 0.05 dB

Peak SAR (extrapolated) = 0.692 W/kg

SAR(1 g) = 0.408 W/kg; SAR(10 g) = 0.235 W/kg

Maximum value of SAR (measured) = 0.559 W/kg



26-1_GSM1900_GPRS(3 Tx slots)_Bottom Side_10mm_Ch661

Communication System: UID 0, GPRS/EDGE11 (0); Frequency: 1880 MHz; Duty Cycle: 1:2.77
Medium: HSL_1900_190920 Medium parameters used: $f = 1880$ MHz; $\sigma = 1.435$ S/m; $\epsilon_r = 40.161$;
 $\rho = 1000$ kg/m³
Ambient Temperature : 23.6 °C; Liquid Temperature : 22.7 °C

DASY5 Configuration:

- Probe: EX3DV4 - SN3819; ConvF(8.27, 8.27, 8.27); Calibrated: 2019.03.01;
- Sensor-Surface: 2mm (Mechanical Surface Detection)
- Electronics: DAE4 Sn715; Calibrated: 2019.01.23
- Phantom: SAM (Front) with CRP v5.0; Type: QD000P40CD; Serial: TP:1795
- Measurement SW: DASY52, Version 52.8 (8); SEMCAD X Version 14.6.10 (7331)

Ch661/Area Scan (41x81x1): Interpolated grid: dx=15mm, dy=15mm

Maximum value of SAR (interpolated) = 0.693 W/kg

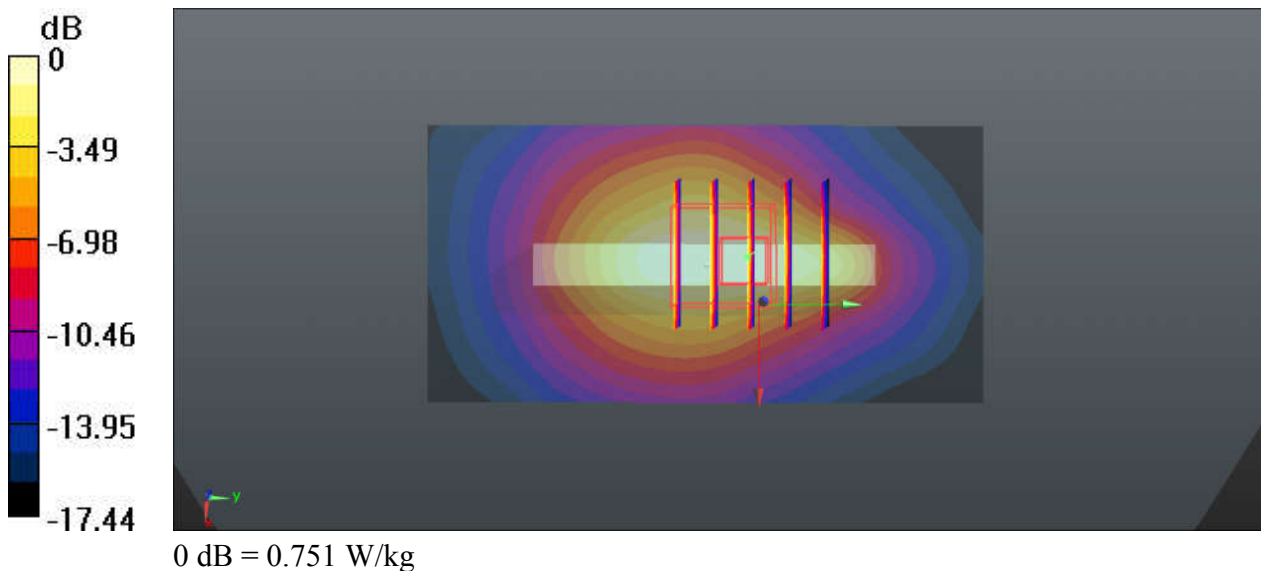
Ch661/Zoom Scan (5x5x7)/Cube 0: Measurement grid: dx=8mm, dy=8mm, dz=5mm

Reference Value = 21.81 V/m; Power Drift = 0.08 dB

Peak SAR (extrapolated) = 0.941 W/kg

SAR(1 g) = 0.534 W/kg; SAR(10 g) = 0.304 W/kg

Maximum value of SAR (measured) = 0.751 W/kg



27-1_WCDMA V_RMC 12.2Kbps_Left Side_10mm_Ch4132

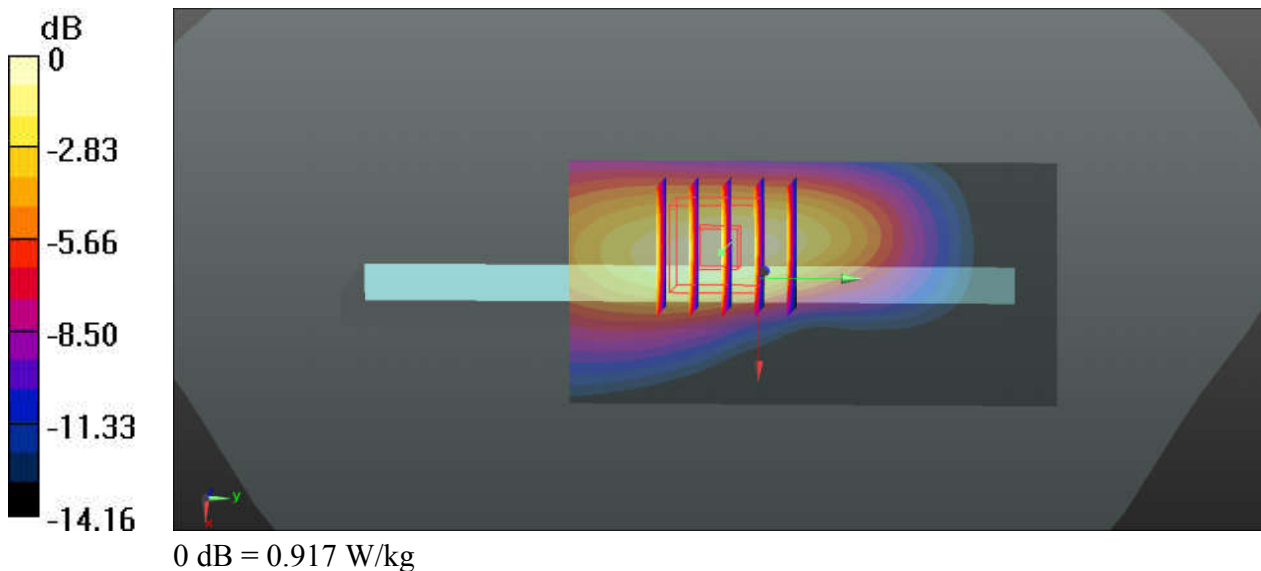
Communication System: UID 0, UMTS (0); Frequency: 826.4 MHz; Duty Cycle: 1:1
Medium: HSL_835_190921 Medium parameters used: $f = 826.5$ MHz; $\sigma = 0.921$ S/m; $\epsilon_r = 41.889$;
 $\rho = 1000$ kg/m³
Ambient Temperature : 23.5 °C ; Liquid Temperature : 22.6 °C

DASY5 Configuration:

- Probe: EX3DV4 - SN3819; ConvF(9.57, 9.57, 9.57); Calibrated: 2019.03.01;
- Sensor-Surface: 2mm (Mechanical Surface Detection)
- Electronics: DAE4 Sn715; Calibrated: 2019.01.23
- Phantom: SAM (Front) with CRP v5.0; Type: QD000P40CD; Serial: TP:1795
- Measurement SW: DASY52, Version 52.8 (8); SEMCAD X Version 14.6.10 (7331)

Ch4132/Area Scan (41x81x1): Interpolated grid: dx=15mm, dy=15mm
Maximum value of SAR (interpolated) = 0.899 W/kg

Ch4132/Zoom Scan (5x5x7)/Cube 0: Measurement grid: dx=8mm, dy=8mm, dz=5mm
Reference Value = 26.25 V/m; Power Drift = 0.17 dB
Peak SAR (extrapolated) = 1.12 W/kg
SAR(1 g) = 0.669 W/kg; SAR(10 g) = 0.387 W/kg
Maximum value of SAR (measured) = 0.917 W/kg



28-1_WCDMA IV_RMC 12.2Kbps_Bottom Side_10mm_Ch1513

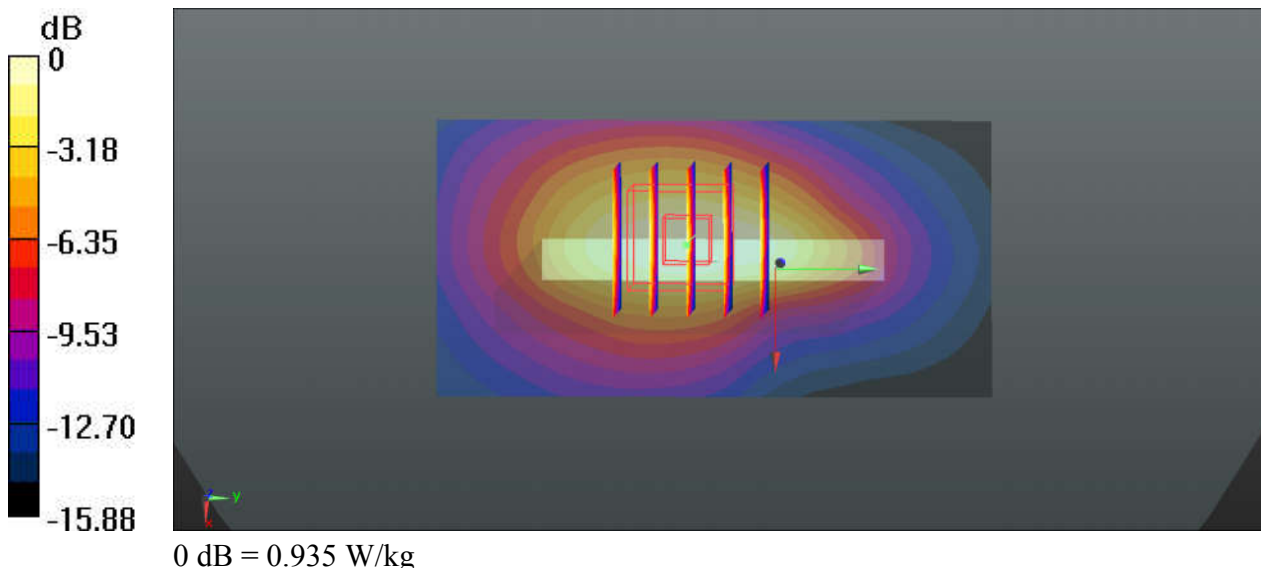
Communication System: UID 0, UMTS (0); Frequency: 1752.6 MHz; Duty Cycle: 1:1
Medium: HSL_1750_190920 Medium parameters used: $f = 1753$ MHz; $\sigma = 1.385$ S/m; $\epsilon_r = 41.544$;
 $\rho = 1000$ kg/m³
Ambient Temperature : 23.7 °C; Liquid Temperature : 22.5 °C

DASY5 Configuration:

- Probe: EX3DV4 - SN3819; ConvF(8.54, 8.54, 8.54); Calibrated: 2019.03.01;
- Sensor-Surface: 2mm (Mechanical Surface Detection)
- Electronics: DAE4 Sn715; Calibrated: 2019.01.23
- Phantom: SAM (Front) with CRP v5.0; Type: QD000P40CD; Serial: TP:1795
- Measurement SW: DASY52, Version 52.8 (8); SEMCAD X Version 14.6.10 (7331)

Ch1513/Area Scan (41x81x1): Interpolated grid: dx=15mm, dy=15mm
Maximum value of SAR (interpolated) = 0.982 W/kg

Ch1513/Zoom Scan (5x5x7)/Cube 0: Measurement grid: dx=8mm, dy=8mm, dz=5mm
Reference Value = 25.42 V/m; Power Drift = 0.18 dB
Peak SAR (extrapolated) = 1.14 W/kg
SAR(1 g) = 0.702 W/kg; SAR(10 g) = 0.407 W/kg
Maximum value of SAR (measured) = 0.935 W/kg



29-1_WCDMA II_RMC 12.2Kbps_Top Side_10mm_Ch9262

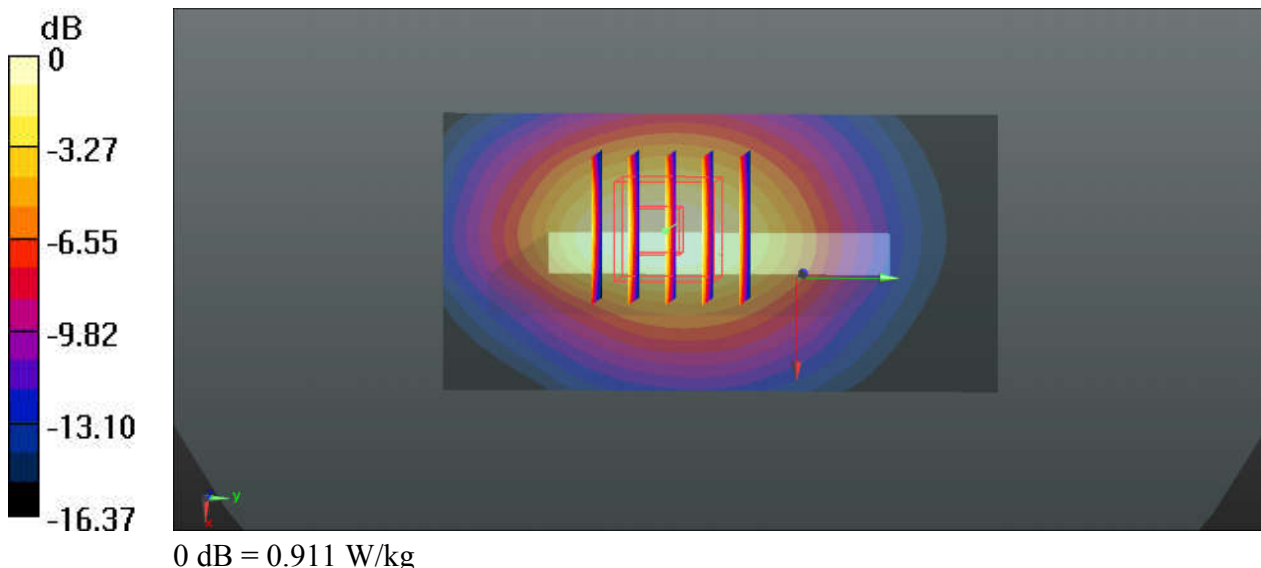
Communication System: UID 0, UMTS (0); Frequency: 1852.4 MHz; Duty Cycle: 1:1
Medium: HSL_1900_190920 Medium parameters used: $f = 1852.4$ MHz; $\sigma = 1.405$ S/m; $\epsilon_r = 40.286$; $\rho = 1000$ kg/m³
Ambient Temperature : 23.6 °C; Liquid Temperature : 22.7 °C

DASY5 Configuration:

- Probe: EX3DV4 - SN3819; ConvF(8.27, 8.27, 8.27); Calibrated: 2019.03.01;
- Sensor-Surface: 2mm (Mechanical Surface Detection)
- Electronics: DAE4 Sn715; Calibrated: 2019.01.23
- Phantom: SAM (Front) with CRP v5.0; Type: QD000P40CD; Serial: TP:1795
- Measurement SW: DASY52, Version 52.8 (8); SEMCAD X Version 14.6.10 (7331)

Ch9262/Area Scan (41x81x1): Interpolated grid: dx=15mm, dy=15mm
Maximum value of SAR (interpolated) = 0.929 W/kg

Ch9262/Zoom Scan (5x5x7)/Cube 0: Measurement grid: dx=8mm, dy=8mm, dz=5mm
Reference Value = 22.30 V/m; Power Drift = 0.16 dB
Peak SAR (extrapolated) = 1.12 W/kg
SAR(1 g) = 0.674 W/kg; SAR(10 g) = 0.385 W/kg
Maximum value of SAR (measured) = 0.911 W/kg



30-1_CDMA2000 BC0_RTAP 153.6Kbps_Left Side_10mm_Ch384

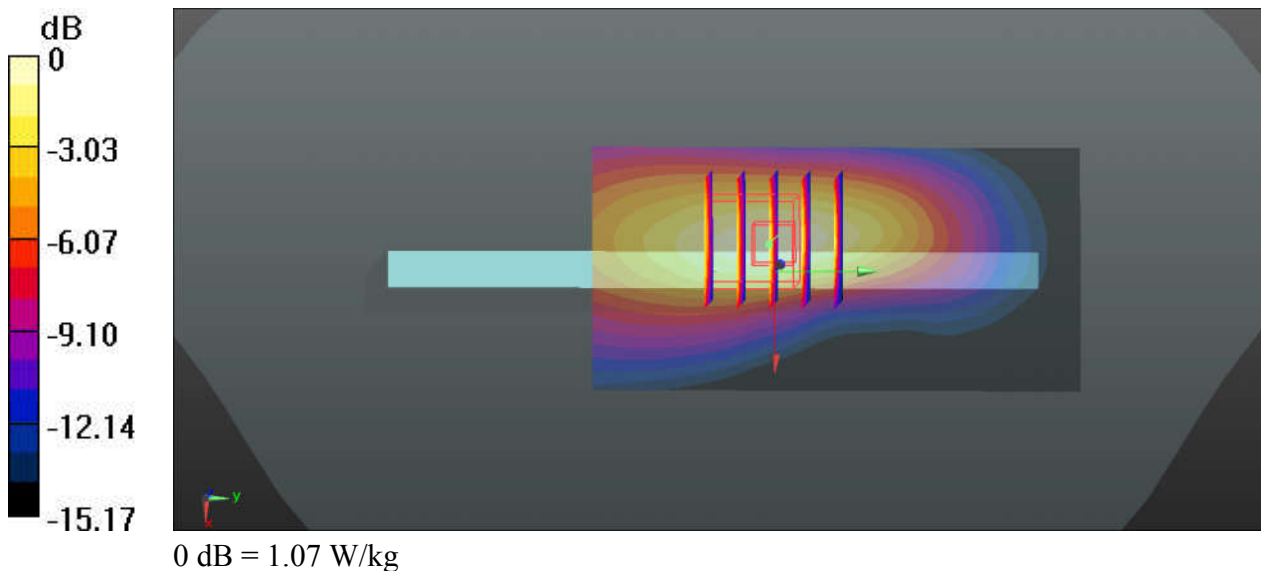
Communication System: UID 0, CDMA2000 (0); Frequency: 836.52 MHz; Duty Cycle: 1:1
Medium: HSL_835_190921 Medium parameters used: $f = 836.52$ MHz; $\sigma = 0.93$ S/m; $\epsilon_r = 41.777$;
 $\rho = 1000$ kg/m³
Ambient Temperature : 23.5 °C; Liquid Temperature : 22.6 °C

DASY5 Configuration:

- Probe: EX3DV4 - SN3819; ConvF(9.57, 9.57, 9.57); Calibrated: 2019.03.01;
- Sensor-Surface: 2mm (Mechanical Surface Detection)
- Electronics: DAE4 Sn715; Calibrated: 2019.01.23
- Phantom: SAM (Front) with CRP v5.0; Type: QD000P40CD; Serial: TP:1795
- Measurement SW: DASY52, Version 52.8 (8); SEMCAD X Version 14.6.10 (7331)

Ch384/Area Scan (41x81x1): Interpolated grid: dx=15mm, dy=15mm
Maximum value of SAR (interpolated) = 1.04 W/kg

Ch384/Zoom Scan (5x5x7)/Cube 0: Measurement grid: dx=8mm, dy=8mm, dz=5mm
Reference Value = 28.51 V/m; Power Drift = 0.12 dB
Peak SAR (extrapolated) = 1.28 W/kg
SAR(1 g) = 0.738 W/kg; SAR(10 g) = 0.403 W/kg
Maximum value of SAR (measured) = 1.07 W/kg



31-1_CDMA2000 BC10_RTAP 153.6Kbps_Left Side_10mm_Ch580

Communication System: UID 0, CDMA2000 (0); Frequency: 820.5 MHz; Duty Cycle: 1:1
Medium: HSL_835_190921 Medium parameters used: $f = 820.5$ MHz; $\sigma = 0.916$ S/m; $\epsilon_r = 41.951$;
 $\rho = 1000$ kg/m³
Ambient Temperature : 23.5 °C; Liquid Temperature : 22.6 °C

DASY5 Configuration:

- Probe: EX3DV4 - SN3819; ConvF(9.57, 9.57, 9.57); Calibrated: 2019.03.01;
- Sensor-Surface: 2mm (Mechanical Surface Detection)
- Electronics: DAE4 Sn715; Calibrated: 2019.01.23
- Phantom: SAM (Front) with CRP v5.0; Type: QD000P40CD; Serial: TP:1795
- Measurement SW: DASY52, Version 52.8 (8); SEMCAD X Version 14.6.10 (7331)

Ch580/Area Scan (41x81x1): Interpolated grid: dx=15mm, dy=15mm

Maximum value of SAR (interpolated) = 0.959 W/kg

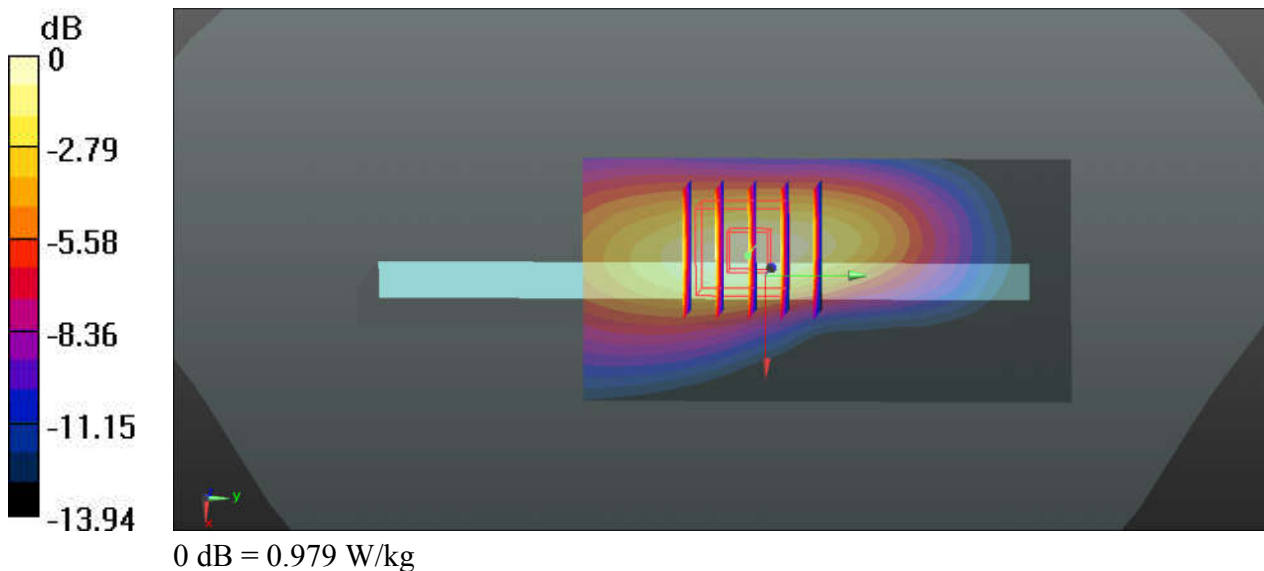
Ch580/Zoom Scan (5x5x7)/Cube 0: Measurement grid: dx=8mm, dy=8mm, dz=5mm

Reference Value = 28.72 V/m; Power Drift = 0.16 dB

Peak SAR (extrapolated) = 1.20 W/kg

SAR(1 g) = 0.714 W/kg; SAR(10 g) = 0.415 W/kg

Maximum value of SAR (measured) = 0.979 W/kg



32-1_CDMA2000 BC1_RTAP 153.6Kbps_Bottom Side_10mm_Ch1175

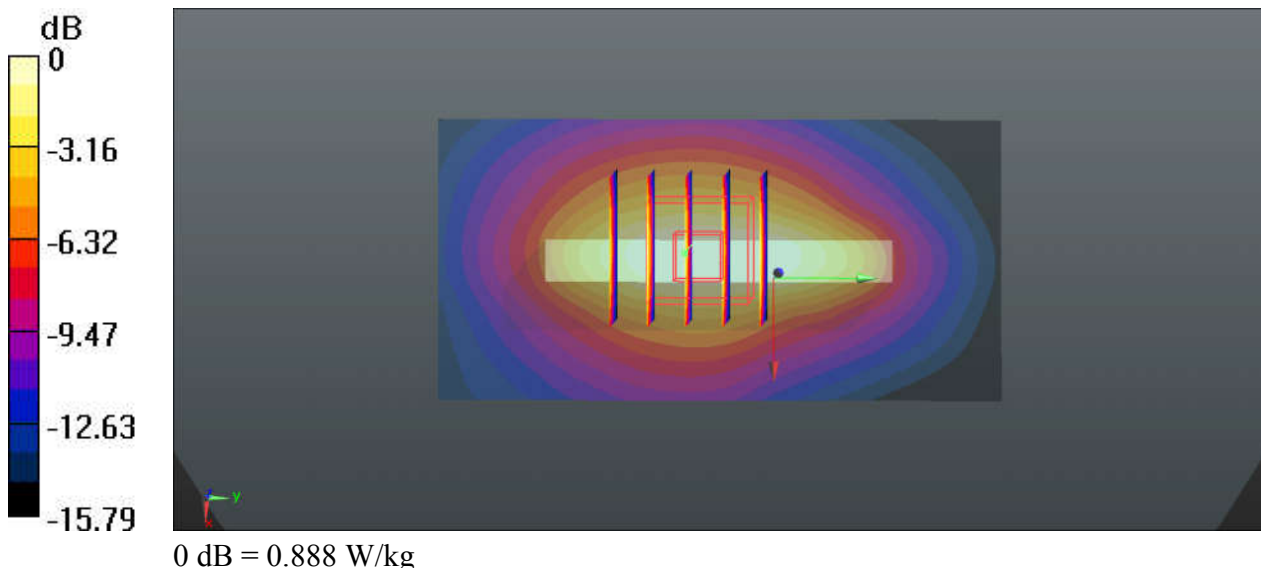
Communication System: UID 0, CDMA2000 (0); Frequency: 1908.75 MHz; Duty Cycle: 1:1
Medium: HSL_1900_190920 Medium parameters used: $f = 1909$ MHz; $\sigma = 1.464$ S/m; $\epsilon_r = 40.029$;
 $\rho = 1000$ kg/m³
Ambient Temperature : 23.6 °C; Liquid Temperature : 22.7 °C

DASY5 Configuration:

- Probe: EX3DV4 - SN3819; ConvF(8.27, 8.27, 8.27); Calibrated: 2019.03.01;
- Sensor-Surface: 2mm (Mechanical Surface Detection)
- Electronics: DAE4 Sn715; Calibrated: 2019.01.23
- Phantom: SAM (Front) with CRP v5.0; Type: QD000P40CD; Serial: TP:1795
- Measurement SW: DASY52, Version 52.8 (8); SEMCAD X Version 14.6.10 (7331)

Ch1175/Area Scan (41x81x1): Interpolated grid: dx=15mm, dy=15mm
Maximum value of SAR (interpolated) = 0.929 W/kg

Ch1175/Zoom Scan (5x5x7)/Cube 0: Measurement grid: dx=8mm, dy=8mm, dz=5mm
Reference Value = 25.21 V/m; Power Drift = -0.10 dB
Peak SAR (extrapolated) = 1.09 W/kg
SAR(1 g) = 0.655 W/kg; SAR(10 g) = 0.370 W/kg
Maximum value of SAR (measured) = 0.888 W/kg



33-1_LTE Band 71_20M_QPSK_50RB_50Offset_Left Side_10mm_Ch133322

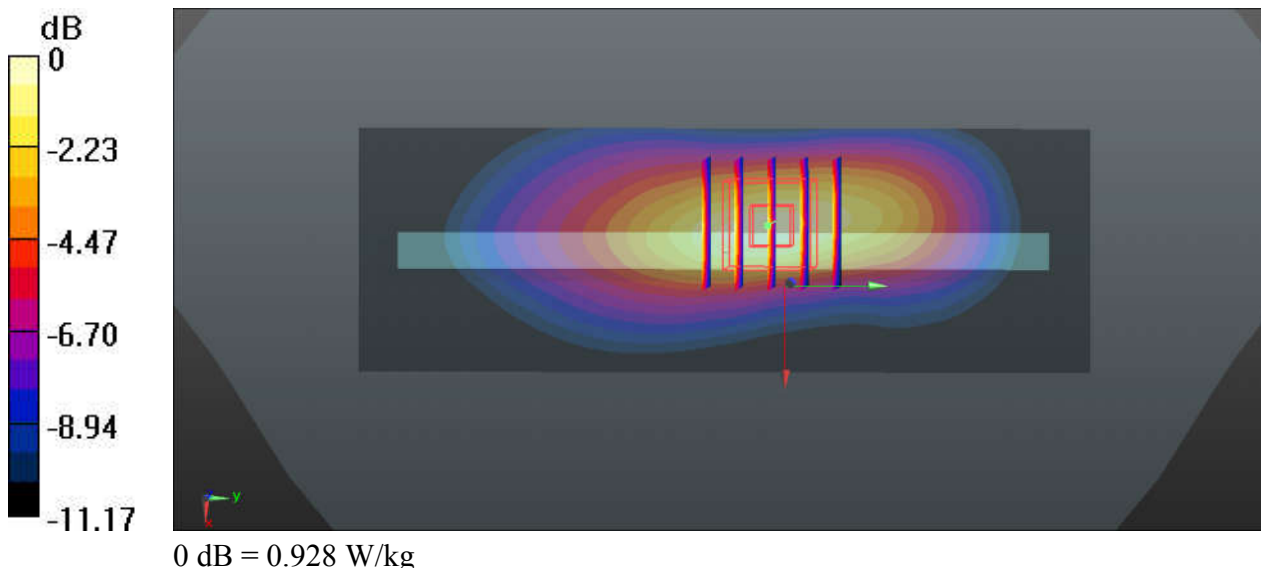
Communication System: UID 0, LTE (0); Frequency: 683 MHz; Duty Cycle: 1:1
Medium: HSL_750_190921 Medium parameters used: $f = 683 \text{ MHz}$; $\sigma = 0.838 \text{ S/m}$; $\epsilon_r = 42.103$; $\rho = 1000 \text{ kg/m}^3$
Ambient Temperature : $23.6 \text{ }^\circ\text{C}$; Liquid Temperature : $22.4 \text{ }^\circ\text{C}$

DASY5 Configuration:

- Probe: EX3DV4 - SN3819; ConvF(10, 10, 10); Calibrated: 2019.03.01;
- Sensor-Surface: 2mm (Mechanical Surface Detection)
- Electronics: DAE4 Sn715; Calibrated: 2019.01.23
- Phantom: SAM (Front) with CRP v5.0; Type: QD000P40CD; Serial: TP:1795
- Measurement SW: DASY52, Version 52.8 (8); SEMCAD X Version 14.6.10 (7331)

Ch133322/Area Scan (41x121x1): Interpolated grid: $dx=15\text{mm}$, $dy=15\text{mm}$
Maximum value of SAR (interpolated) = 0.873 W/kg

Ch133322/Zoom Scan (5x5x7)/Cube 0: Measurement grid: $dx=8\text{mm}$, $dy=8\text{mm}$, $dz=5\text{mm}$
Reference Value = 30.44 V/m ; Power Drift = 0.08 dB
Peak SAR (extrapolated) = 1.08 W/kg
SAR(1 g) = 0.712 W/kg ; SAR(10 g) = 0.444 W/kg
Maximum value of SAR (measured) = 0.928 W/kg



34-1_LTE Band 12_10M_QPSK_25RB_0Offset_Left Side_10mm_Ch23095

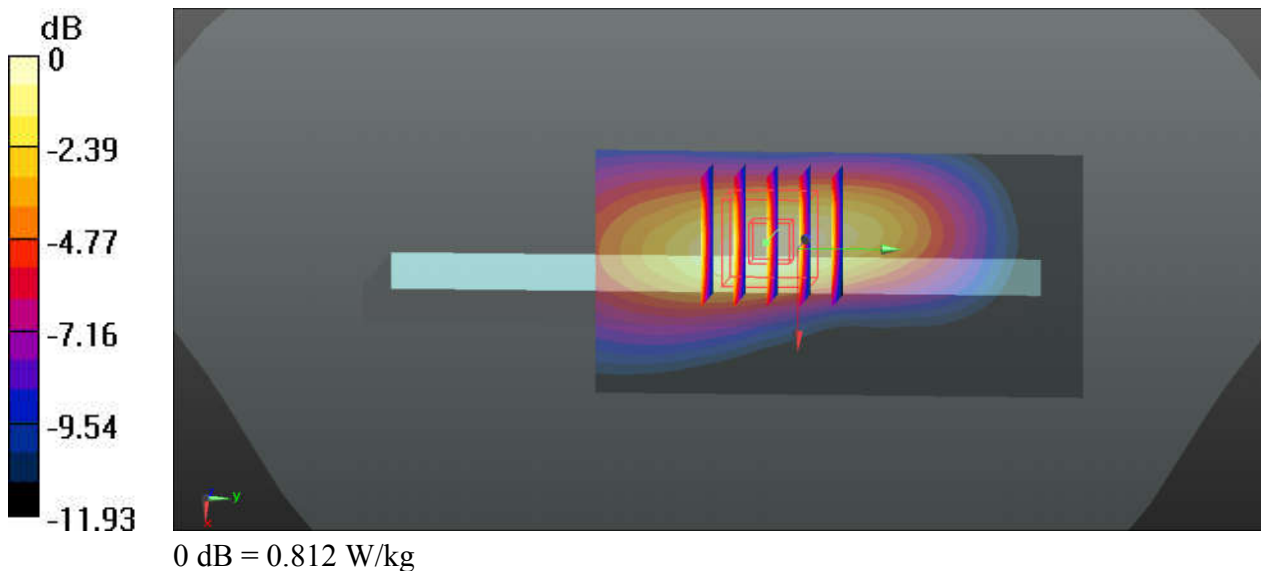
Communication System: UID 0, LTE (0); Frequency: 707.5 MHz; Duty Cycle: 1:1
Medium: HSL_750_190921 Medium parameters used: $f = 707.5$ MHz; $\sigma = 0.858$ S/m; $\epsilon_r = 41.716$; $\rho = 1000$ kg/m³
Ambient Temperature : 23.6 °C; Liquid Temperature : 22.4 °C

DASY5 Configuration:

- Probe: EX3DV4 - SN3819; ConvF(10, 10, 10); Calibrated: 2019.03.01;
- Sensor-Surface: 2mm (Mechanical Surface Detection)
- Electronics: DAE4 Sn715; Calibrated: 2019.01.23
- Phantom: SAM (Front) with CRP v5.0; Type: QD000P40CD; Serial: TP:1795
- Measurement SW: DASY52, Version 52.8 (8); SEMCAD X Version 14.6.10 (7331)

Ch23095/Area Scan (41x81x1): Interpolated grid: dx=15mm, dy=15mm
Maximum value of SAR (interpolated) = 0.784 W/kg

Ch23095/Zoom Scan (5x5x7)/Cube 0: Measurement grid: dx=8mm, dy=8mm, dz=5mm
Reference Value = 26.45 V/m; Power Drift = 0.03 dB
Peak SAR (extrapolated) = 0.961 W/kg
SAR(1 g) = 0.611 W/kg; SAR(10 g) = 0.372 W/kg
Maximum value of SAR (measured) = 0.812 W/kg



35-1_LTE Band 13_10M_QPSK_25RB_0Offset_Left Side_10mm_Ch23230

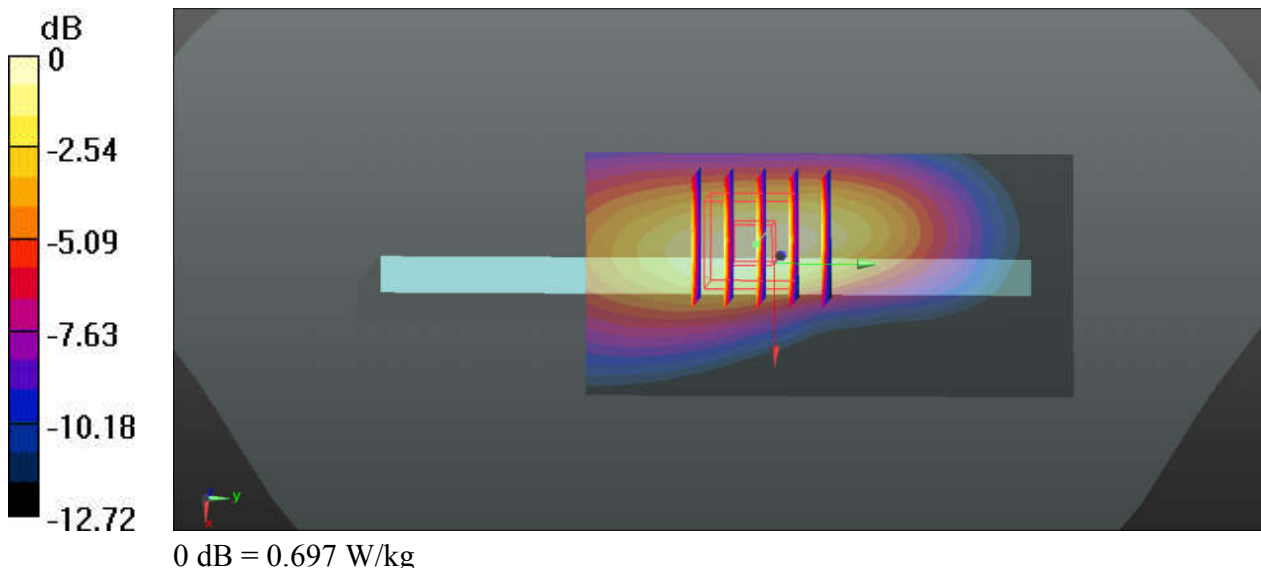
Communication System: UID 0, LTE (0); Frequency: 782 MHz; Duty Cycle: 1:1
Medium: HSL_750_190921 Medium parameters used: $f = 782 \text{ MHz}$; $\sigma = 0.899 \text{ S/m}$; $\epsilon_r = 40.052$; $\rho = 1000 \text{ kg/m}^3$
Ambient Temperature : $23.6 \text{ }^\circ\text{C}$; Liquid Temperature : $22.4 \text{ }^\circ\text{C}$

DASY5 Configuration:

- Probe: EX3DV4 - SN3819; ConvF(10, 10, 10); Calibrated: 2019.03.01;
- Sensor-Surface: 2mm (Mechanical Surface Detection)
- Electronics: DAE4 Sn715; Calibrated: 2019.01.23
- Phantom: SAM (Front) with CRP v5.0; Type: QD000P40CD; Serial: TP:1795
- Measurement SW: DASY52, Version 52.8 (8); SEMCAD X Version 14.6.10 (7331)

Ch23230/Area Scan (41x81x1): Interpolated grid: $dx=15\text{mm}$, $dy=15\text{mm}$
Maximum value of SAR (interpolated) = 0.691 W/kg

Ch23230/Zoom Scan (5x5x7)/Cube 0: Measurement grid: $dx=8\text{mm}$, $dy=8\text{mm}$, $dz=5\text{mm}$
Reference Value = 24.12 V/m ; Power Drift = 0.16 dB
Peak SAR (extrapolated) = 0.922 W/kg
SAR(1 g) = 0.570 W/kg ; SAR(10 g) = 0.340 W/kg
Maximum value of SAR (measured) = 0.697 W/kg



36-1_LTE Band 5_10M_QPSK_25RB_0Offset_Left Side_10mm_Ch20525

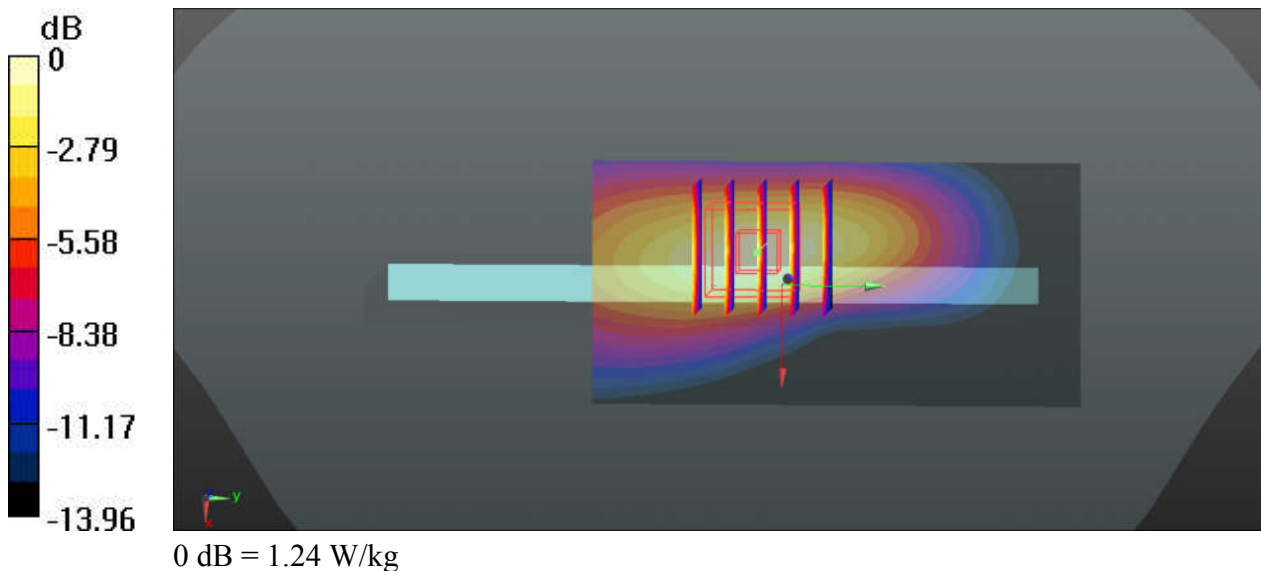
Communication System: UID 0, LTE (0); Frequency: 836.5 MHz; Duty Cycle: 1:1
Medium: HSL_835_190921 Medium parameters used: $f = 836.5$ MHz; $\sigma = 0.93$ S/m; $\epsilon_r = 41.777$; $\rho = 1000$ kg/m³
Ambient Temperature : 23.5 °C; Liquid Temperature : 22.6 °C

DASY5 Configuration:

- Probe: EX3DV4 - SN3819; ConvF(9.57, 9.57, 9.57); Calibrated: 2019.03.01;
- Sensor-Surface: 2mm (Mechanical Surface Detection)
- Electronics: DAE4 Sn715; Calibrated: 2019.01.23
- Phantom: SAM (Front) with CRP v5.0; Type: QD000P40CD; Serial: TP:1795
- Measurement SW: DASY52, Version 52.8 (8); SEMCAD X Version 14.6.10 (7331)

Ch20525/Area Scan (41x81x1): Interpolated grid: dx=15mm, dy=15mm
Maximum value of SAR (interpolated) = 1.21 W/kg

Ch20525/Zoom Scan (5x5x7)/Cube 0: Measurement grid: dx=8mm, dy=8mm, dz=5mm
Reference Value = 31.73 V/m; Power Drift = 0.17 dB
Peak SAR (extrapolated) = 1.52 W/kg
SAR(1 g) = 0.901 W/kg; SAR(10 g) = 0.520 W/kg
Maximum value of SAR (measured) = 1.24 W/kg



37-1_LTE Band 26_15M_QPSK_1RB_0Offset_Left Side_10mm_Ch26865

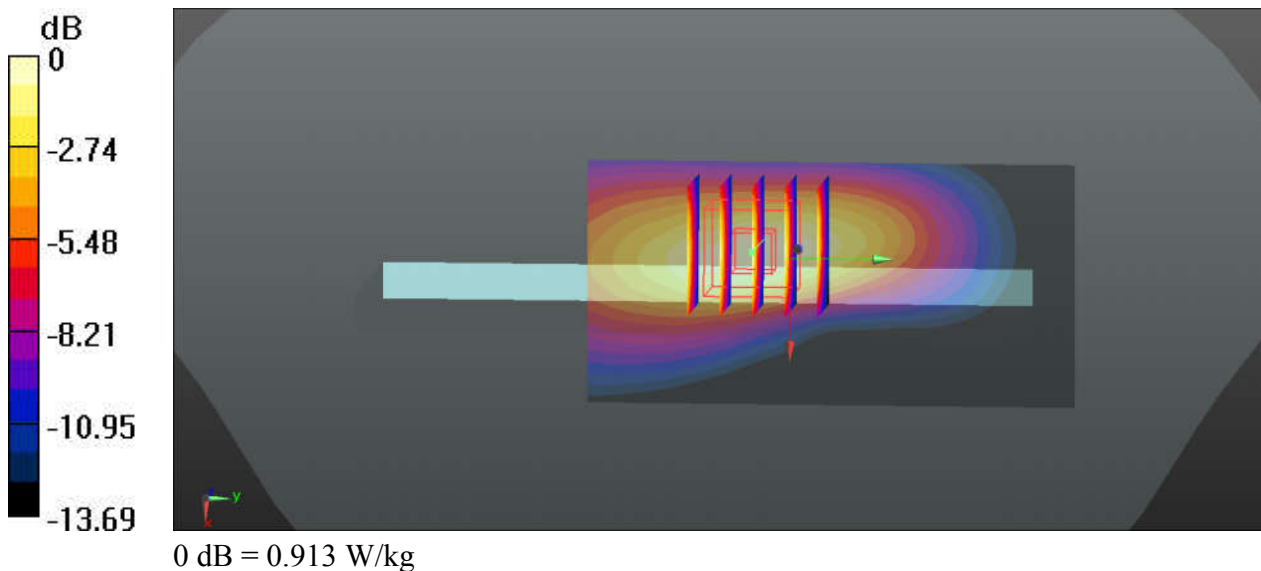
Communication System: UID 0, LTE (0); Frequency: 831.5 MHz; Duty Cycle: 1:1
Medium: HSL_835_190921 Medium parameters used: $f = 831.5$ MHz; $\sigma = 0.926$ S/m; $\epsilon_r = 41.832$;
 $\rho = 1000$ kg/m³
Ambient Temperature : 23.5 °C; Liquid Temperature : 22.6 °C

DASY5 Configuration:

- Probe: EX3DV4 - SN3819; ConvF(9.57, 9.57, 9.57); Calibrated: 2019.03.01;
- Sensor-Surface: 2mm (Mechanical Surface Detection)
- Electronics: DAE4 Sn715; Calibrated: 2019.01.23
- Phantom: SAM (Front) with CRP v5.0; Type: QD000P40CD; Serial: TP:1795
- Measurement SW: DASY52, Version 52.8 (8); SEMCAD X Version 14.6.10 (7331)

Ch26865/Area Scan (41x81x1): Interpolated grid: dx=15mm, dy=15mm
Maximum value of SAR (interpolated) = 0.908 W/kg

Ch26865/Zoom Scan (5x5x7)/Cube 0: Measurement grid: dx=8mm, dy=8mm, dz=5mm
Reference Value = 27.25 V/m; Power Drift = 0.16 dB
Peak SAR (extrapolated) = 1.11 W/kg
SAR(1 g) = 0.667 W/kg; SAR(10 g) = 0.387 W/kg
Maximum value of SAR (measured) = 0.913 W/kg



38-1_LTE Band 66_20M_QPSK_50RB_0Offset_Bottom Side_10mm_Ch132322

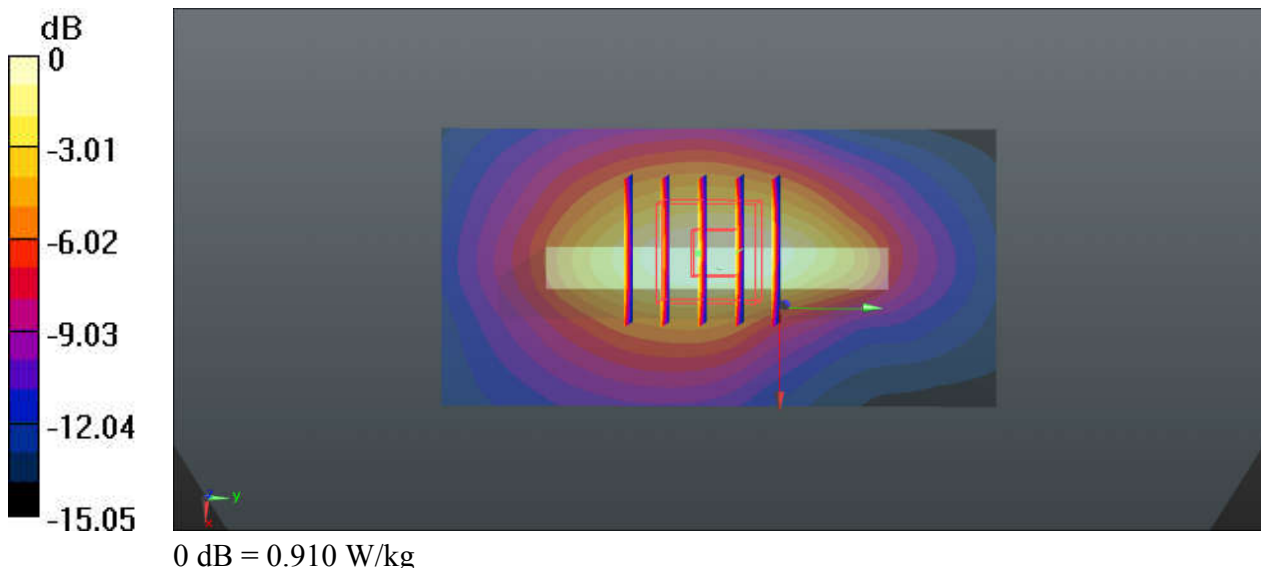
Communication System: UID 0, LTE (0); Frequency: 1745 MHz; Duty Cycle: 1:1
Medium: HSL_1750_190920 Medium parameters used: $f = 1745$ MHz; $\sigma = 1.376$ S/m; $\epsilon_r = 41.589$;
 $\rho = 1000$ kg/m³
Ambient Temperature : 23.7 °C; Liquid Temperature : 22.5 °C

DASY5 Configuration:

- Probe: EX3DV4 - SN3819; ConvF(8.54, 8.54, 8.54); Calibrated: 2019.03.01;
- Sensor-Surface: 2mm (Mechanical Surface Detection)
- Electronics: DAE4 Sn715; Calibrated: 2019.01.23
- Phantom: SAM (Front) with CRP v5.0; Type: QD000P40CD; Serial: TP:1795
- Measurement SW: DASY52, Version 52.8 (8); SEMCAD X Version 14.6.10 (7331)

Ch132322/Area Scan (41x81x1): Interpolated grid: dx=15mm, dy=15mm
Maximum value of SAR (interpolated) = 0.929 W/kg

Ch132322/Zoom Scan (5x5x7)/Cube 0: Measurement grid: dx=8mm, dy=8mm, dz=5mm
Reference Value = 25.80 V/m; Power Drift = 0.02 dB
Peak SAR (extrapolated) = 1.10 W/kg
SAR(1 g) = 0.679 W/kg; SAR(10 g) = 0.396 W/kg
Maximum value of SAR (measured) = 0.910 W/kg



39-1_LTE Band 25_20M_QPSK_1RB_0Offset_Top Side_10mm_Ch26590

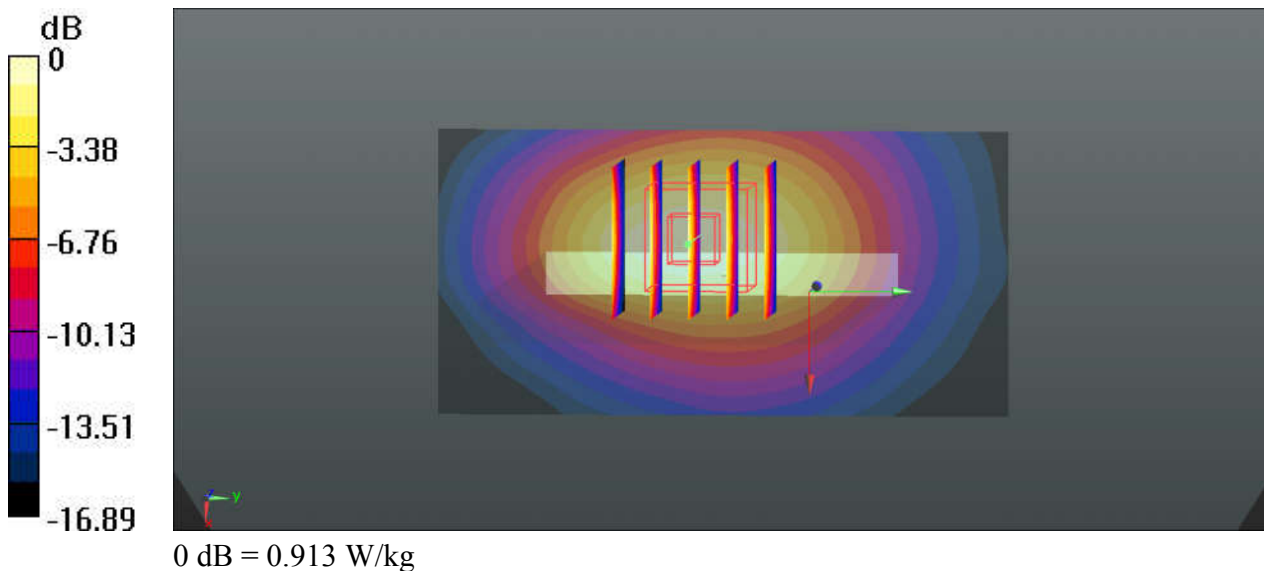
Communication System: UID 0, LTE (0); Frequency: 1905 MHz; Duty Cycle: 1:1
Medium: HSL_1900_190920 Medium parameters used: $f = 1905$ MHz; $\sigma = 1.46$ S/m; $\epsilon_r = 40.046$; $\rho = 1000$ kg/m³
Ambient Temperature : 23.6 °C; Liquid Temperature : 22.7 °C

DASY5 Configuration:

- Probe: EX3DV4 - SN3819; ConvF(8.27, 8.27, 8.27); Calibrated: 2019.03.01;
- Sensor-Surface: 2mm (Mechanical Surface Detection)
- Electronics: DAE4 Sn715; Calibrated: 2019.01.23
- Phantom: SAM (Front) with CRP v5.0; Type: QD000P40CD; Serial: TP:1795
- Measurement SW: DASY52, Version 52.8 (8); SEMCAD X Version 14.6.10 (7331)

Ch26590/Area Scan (41x81x1): Interpolated grid: dx=15mm, dy=15mm
Maximum value of SAR (interpolated) = 0.926 W/kg

Ch26590/Zoom Scan (5x5x7)/Cube 0: Measurement grid: dx=8mm, dy=8mm, dz=5mm
Reference Value = 22.21 V/m; Power Drift = 0.02 dB
Peak SAR (extrapolated) = 1.13 W/kg
SAR(1 g) = 0.667 W/kg; SAR(10 g) = 0.379 W/kg
Maximum value of SAR (measured) = 0.913 W/kg



40-1_LTE Band 30_10M_QPSK_25RB_0Offset_Front_10mm_Ch27710

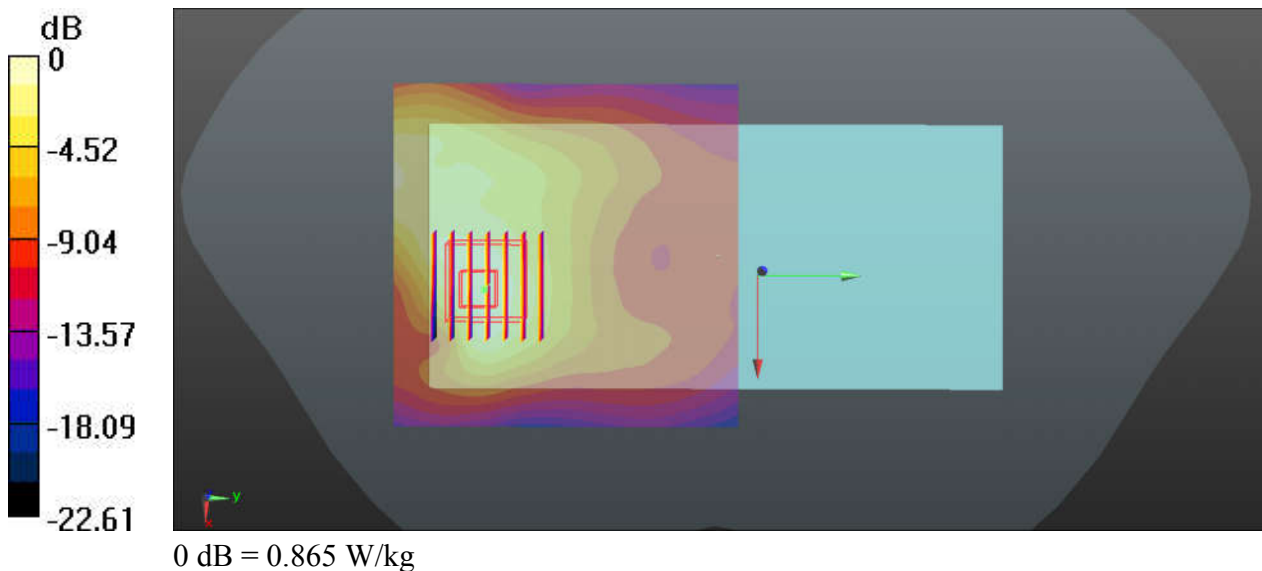
Communication System: UID 0, LTE (0); Frequency: 2310 MHz; Duty Cycle: 1:1
Medium: HSL_2300_190920 Medium parameters used: $f = 2310$ MHz; $\sigma = 1.682$ S/m; $\epsilon_r = 38.704$;
 $\rho = 1000$ kg/m³
Ambient Temperature : 23.4 °C ; Liquid Temperature : 22.5 °C

DASY5 Configuration:

- Probe: EX3DV4 - SN3819; ConvF(7.64, 7.64, 7.64); Calibrated: 2019.03.01;
- Sensor-Surface: 2mm (Mechanical Surface Detection)
- Electronics: DAE4 Sn715; Calibrated: 2019.01.23
- Phantom: SAM (Front) with CRP v5.0; Type: QD000P40CD; Serial: TP:1795
- Measurement SW: DASY52, Version 52.8 (8); SEMCAD X Version 14.6.10 (7331)

Ch27710/Area Scan (81x81x1): Interpolated grid: dx=12mm, dy=12mm
Maximum value of SAR (interpolated) = 0.913 W/kg

Ch27710/Zoom Scan (7x7x7)/Cube 0: Measurement grid: dx=5mm, dy=5mm, dz=5mm
Reference Value = 6.487 V/m; Power Drift = 0.07 dB
Peak SAR (extrapolated) = 1.16 W/kg
SAR(1 g) = 0.616 W/kg; SAR(10 g) = 0.319 W/kg
Maximum value of SAR (measured) = 0.865 W/kg



41-1_LTE Band 7_20M_QPSK_50RB_0Offset_Back_10mm_Ch21350

Communication System: UID 0, LTE (0); Frequency: 2560 MHz; Duty Cycle: 1:1
Medium: HSL_2600_190920 Medium parameters used: $f = 2560$ MHz; $\sigma = 2.008$ S/m; $\epsilon_r = 38.536$;
 $\rho = 1000$ kg/m³
Ambient Temperature : 23.5 °C ; Liquid Temperature : 22.4 °C

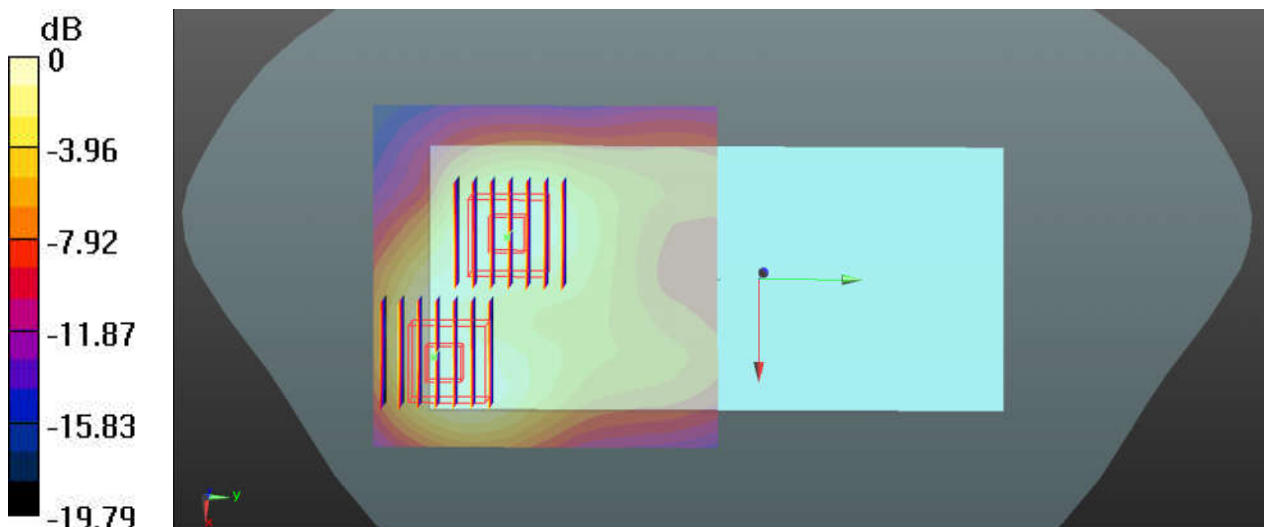
DASY5 Configuration:

- Probe: EX3DV4 - SN3819; ConvF(7.06, 7.06, 7.06); Calibrated: 2019.03.01;
- Sensor-Surface: 2mm (Mechanical Surface Detection)
- Electronics: DAE4 Sn715; Calibrated: 2019.01.23
- Phantom: SAM (Front) with CRP v5.0; Type: QD000P40CD; Serial: TP:1795
- Measurement SW: DASY52, Version 52.8 (8); SEMCAD X Version 14.6.10 (7331)

Ch21350/Area Scan (81x81x1): Interpolated grid: dx=12mm, dy=12mm
Maximum value of SAR (interpolated) = 1.39 W/kg

Ch21350/Zoom Scan (7x7x7)/Cube 0: Measurement grid: dx=5mm, dy=5mm, dz=5mm
Reference Value = 7.713 V/m; Power Drift = 0.01 dB
Peak SAR (extrapolated) = 2.10 W/kg
SAR(1 g) = 0.956 W/kg; SAR(10 g) = 0.445 W/kg
Maximum value of SAR (measured) = 1.46 W/kg

Ch21350/Zoom Scan (7x7x7)/Cube 1: Measurement grid: dx=5mm, dy=5mm, dz=5mm
Reference Value = 7.713 V/m; Power Drift = 0.01 dB
Peak SAR (extrapolated) = 1.45 W/kg
SAR(1 g) = 0.754 W/kg; SAR(10 g) = 0.397 W/kg
Maximum value of SAR (measured) = 1.09 W/kg



0 dB = 1.09 W/kg

42-1_LTE Band 41_20M_QPSK_50RB_24Offset_Top Side_10mm_Ch41055

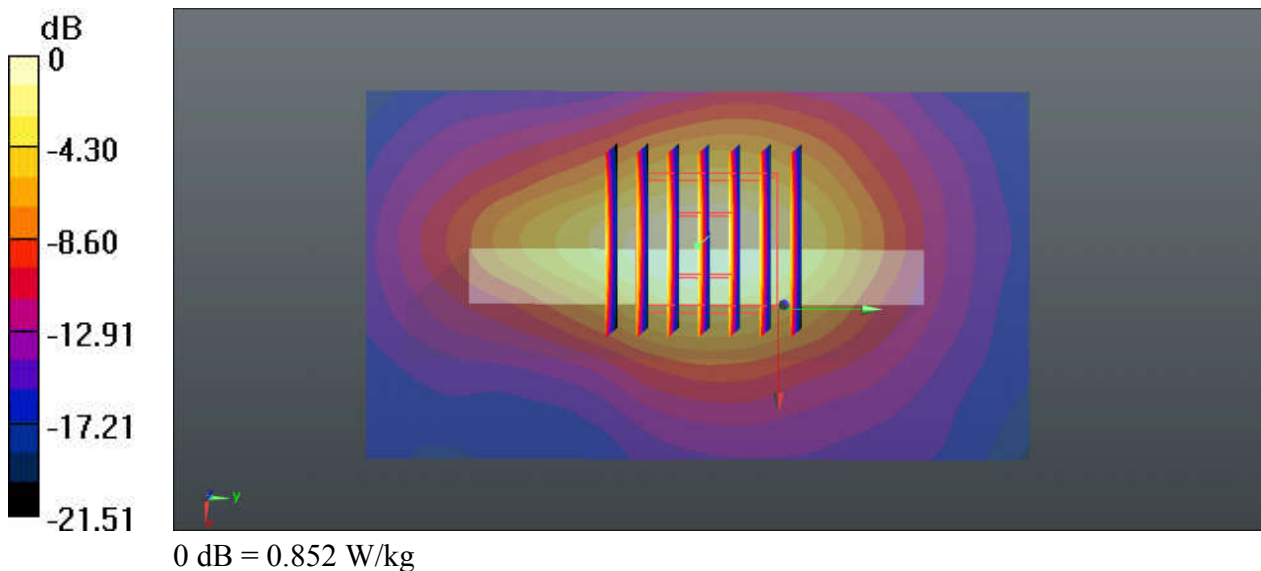
Communication System: UID 0, LTE (0); Frequency: 2636.5 MHz; Duty Cycle: 1:2.331
Medium: HSL_2600_190920 Medium parameters used: $f = 2636.5$ MHz; $\sigma = 2.102$ S/m; $\epsilon_r = 38.167$; $\rho = 1000$ kg/m³
Ambient Temperature : 23.5 °C; Liquid Temperature : 22.4 °C

DASY5 Configuration:

- Probe: EX3DV4 - SN3819; ConvF(7.06, 7.06, 7.06); Calibrated: 2019.03.01;
- Sensor-Surface: 2mm (Mechanical Surface Detection)
- Electronics: DAE4 Sn715; Calibrated: 2019.01.23
- Phantom: SAM (Front) with CRP v5.0; Type: QD000P40CD; Serial: TP:1795
- Measurement SW: DASY52, Version 52.8 (8); SEMCAD X Version 14.6.10 (7331)

Ch41055/Area Scan (51x91x1): Interpolated grid: dx=12mm, dy=12mm
Maximum value of SAR (interpolated) = 0.911 W/kg

Ch41055/Zoom Scan (7x7x7)/Cube 0: Measurement grid: dx=5mm, dy=5mm, dz=5mm
Reference Value = 18.11 V/m; Power Drift = -0.14 dB
Peak SAR (extrapolated) = 1.18 W/kg
SAR(1 g) = 0.557 W/kg; SAR(10 g) = 0.256 W/kg
Maximum value of SAR (measured) = 0.852 W/kg



43-1_LTE Band 48_20M_QPSK_1RB_99Offset_Top Side_10mm_Ch56640

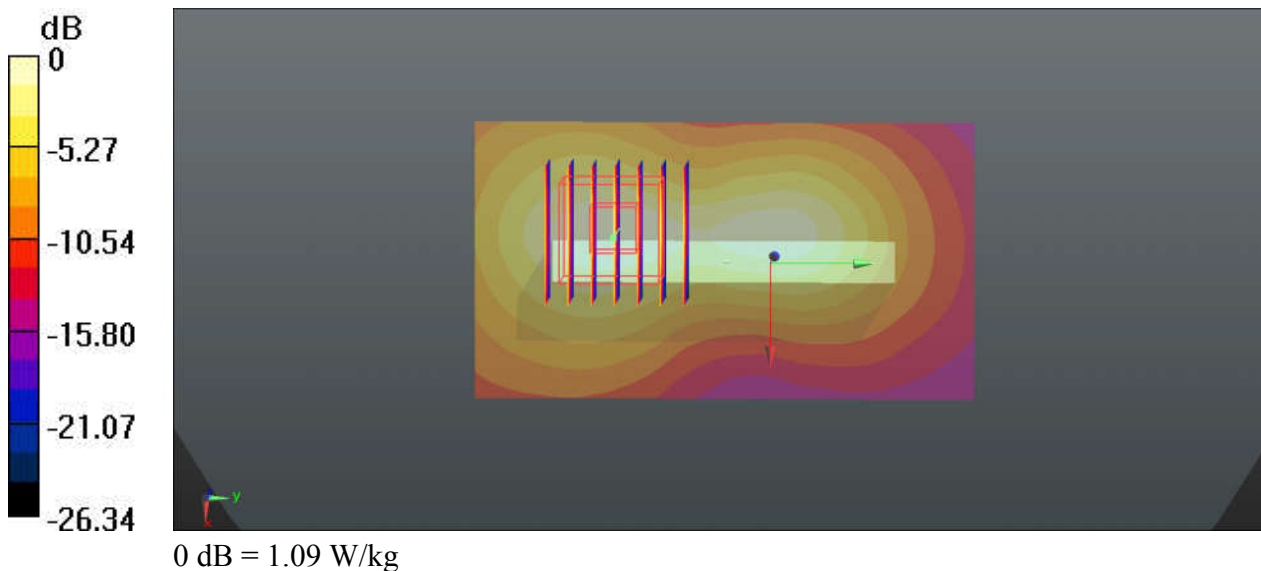
Communication System: UID 0, LTE (0); Frequency: 3690 MHz; Duty Cycle: 1:1.59
Medium: HSL_3500-3700_190922 Medium parameters used: $f = 3690$ MHz; $\sigma = 3.046$ S/m; $\epsilon_r = 38.387$; $\rho = 1000$ kg/m³
Ambient Temperature : 23.3 °C; Liquid Temperature : 22.5 °C

DASY5 Configuration:

- Probe: EX3DV4 - SN3819; ConvF(6.67, 6.67, 6.67); Calibrated: 2019.03.01;
- Sensor-Surface: 1.4mm (Mechanical Surface Detection)
- Electronics: DAE4 Sn715; Calibrated: 2019.01.23
- Phantom: SAM (Front) with CRP v5.0; Type: QD000P40CD; Serial: TP:1795
- Measurement SW: DASY52, Version 52.8 (8); SEMCAD X Version 14.6.10 (7331)

Ch56640/Area Scan (51x91x1): Interpolated grid: dx=12mm, dy=12mm
Maximum value of SAR (interpolated) = 1.13 W/kg

Ch56640/Zoom Scan (7x7x7)/Cube 0: Measurement grid: dx=5mm, dy=5mm, dz=1.4mm
Reference Value = 14.65 V/m; Power Drift = 0.08 dB
Peak SAR (extrapolated) = 1.62 W/kg
SAR(1 g) = 0.571 W/kg; SAR(10 g) = 0.241 W/kg
Maximum value of SAR (measured) = 1.09 W/kg



44-1_WLAN2.4GHz_802.11b 1Mbps_Back_10mm_Ch6

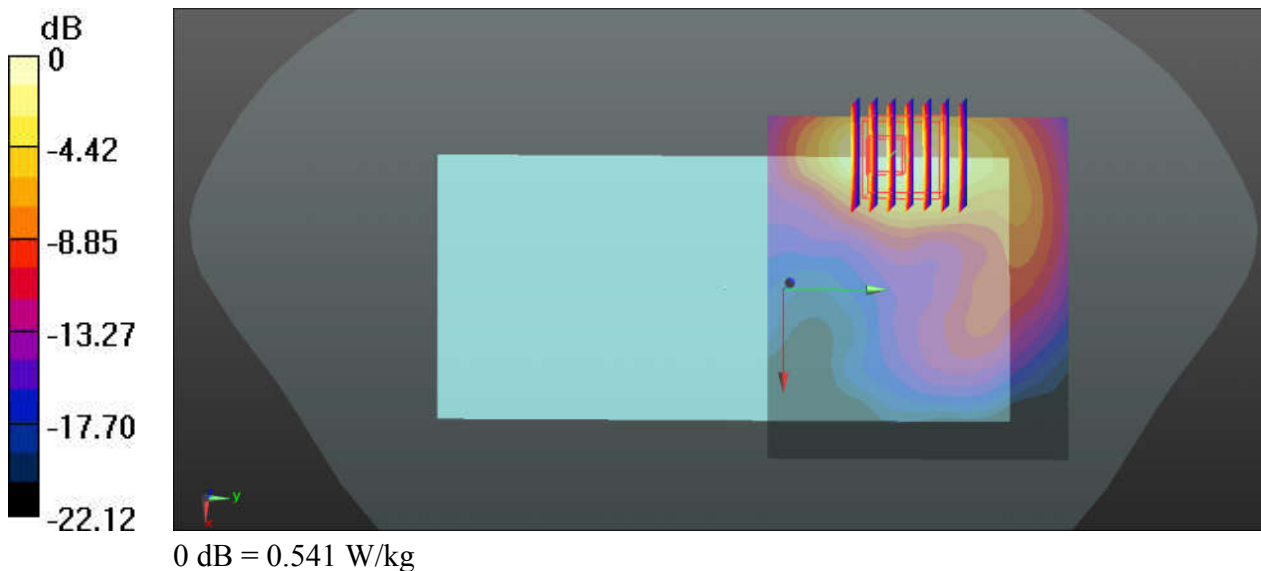
Communication System: UID 0, WIFI (0); Frequency: 2437 MHz; Duty Cycle: 1:1.007
Medium: HSL_2450_190920 Medium parameters used: $f = 2437$ MHz; $\sigma = 1.843$ S/m; $\epsilon_r = 37.718$;
 $\rho = 1000$ kg/m³
Ambient Temperature : 23.4 °C ; Liquid Temperature : 22.6 °C

DASY5 Configuration:

- Probe: EX3DV4 - SN3819; ConvF(7.21, 7.21, 7.21); Calibrated: 2019.03.01;
- Sensor-Surface: 2mm (Mechanical Surface Detection)
- Electronics: DAE4 Sn715; Calibrated: 2019.01.23
- Phantom: SAM (Front) with CRP v5.0; Type: QD000P40CD; Serial: TP:1795
- Measurement SW: DASY52, Version 52.8 (8); SEMCAD X Version 14.6.10 (7331)

Ch6/Area Scan (81x71x1): Interpolated grid: dx=12mm, dy=12mm
Maximum value of SAR (interpolated) = 0.525 W/kg

Ch6/Zoom Scan (7x7x7)/Cube 0: Measurement grid: dx=5mm, dy=5mm, dz=5mm
Reference Value = 2.974 V/m; Power Drift = 0.05 dB
Peak SAR (extrapolated) = 0.917 W/kg
SAR(1 g) = 0.405 W/kg; SAR(10 g) = 0.186 W/kg
Maximum value of SAR (measured) = 0.541 W/kg



45-1_Bluetooth_DH5 1Mbps_Back_10mm_Ch39

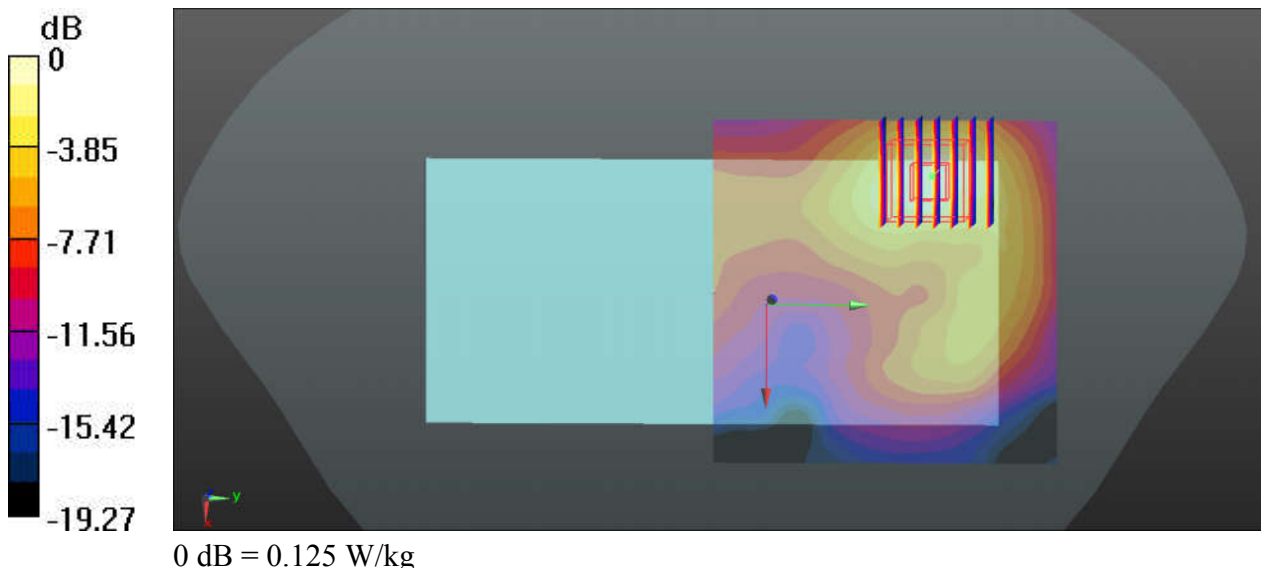
Communication System: UID 0, Bluetooth (0); Frequency: 2441 MHz; Duty Cycle: 1:1.301
Medium: HSL_2450_191008 Medium parameters used: $f = 2441$ MHz; $\sigma = 1.719$ S/m; $\epsilon_r = 40.81$; $\rho = 1000$ kg/m³
Ambient Temperature : 23.6 °C; Liquid Temperature : 22.6 °C

DASY5 Configuration:

- Probe: EX3DV4 - SN3819; ConvF(7.21, 7.21, 7.21); Calibrated: 2019.03.01;
- Sensor-Surface: 2mm (Mechanical Surface Detection)
- Electronics: DAE4 Sn715; Calibrated: 2019.01.23
- Phantom: SAM (Front) with CRP v5.0; Type: QD000P40CD; Serial: TP:1795
- Measurement SW: DASY52, Version 52.8 (8); SEMCAD X Version 14.6.10 (7331)

Ch39/Area Scan (81x81x1): Interpolated grid: dx=12mm, dy=12mm
Maximum value of SAR (interpolated) = 0.123 W/kg

Ch39/Zoom Scan (7x7x7)/Cube 0: Measurement grid: dx=5mm, dy=5mm, dz=5mm
Reference Value = 2.726 V/m; Power Drift = 0.09 dB
Peak SAR (extrapolated) = 0.168 W/kg
SAR(1 g) = 0.087 W/kg; SAR(10 g) = 0.042 W/kg
Maximum value of SAR (measured) = 0.125 W/kg



46-1_WLAN5GHz_802.11n-HT40 MCS0_Back_10mm_Ch46

Communication System: UID 0, WIFI (0); Frequency: 5230 MHz; Duty Cycle: 1:1.038
Medium: HSL_5250_190922 Medium parameters used: $f = 5230$ MHz; $\sigma = 4.566$ S/m; $\epsilon_r = 36.695$;
 $\rho = 1000$ kg/m³
Ambient Temperature : 23.6 °C; Liquid Temperature : 22.8 °C

DASY5 Configuration:

- Probe: EX3DV4 - SN3819; ConvF(5.07, 5.07, 5.07); Calibrated: 2019.03.01;
- Sensor-Surface: 1.4mm (Mechanical Surface Detection)
- Electronics: DAE4 Sn715; Calibrated: 2019.01.23
- Phantom: SAM (Front) with CRP v5.0; Type: QD000P40CD; Serial: TP:1795
- Measurement SW: DASY52, Version 52.8 (8); SEMCAD X Version 14.6.10 (7331)

Ch46/Area Scan (101x91x1): Interpolated grid: dx=10mm, dy=10mm

Maximum value of SAR (interpolated) = 0.455 W/kg

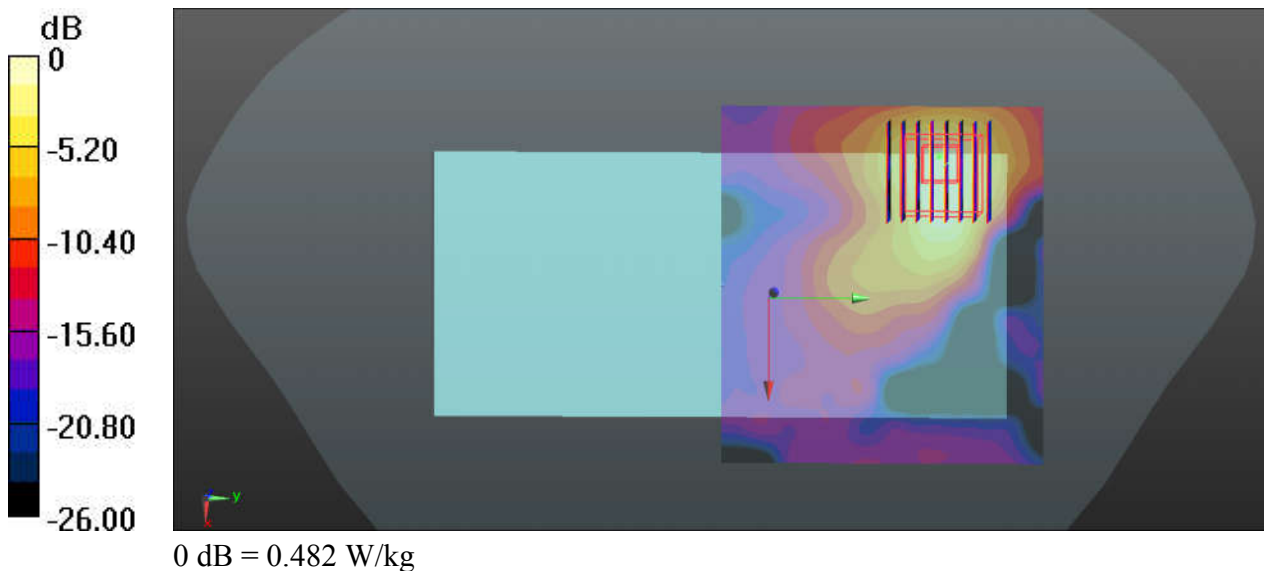
Ch46/Zoom Scan (8x8x7)/Cube 0: Measurement grid: dx=4mm, dy=4mm, dz=1.4mm

Reference Value = 0.02300 V/m; Power Drift = 0.06 dB

Peak SAR (extrapolated) = 0.793 W/kg

SAR(1 g) = 0.212 W/kg; SAR(10 g) = 0.078 W/kg

Maximum value of SAR (measured) = 0.482 W/kg



47-1_WLAN5GHz_802.11n-HT40 MCS0_Back_10mm_Ch159

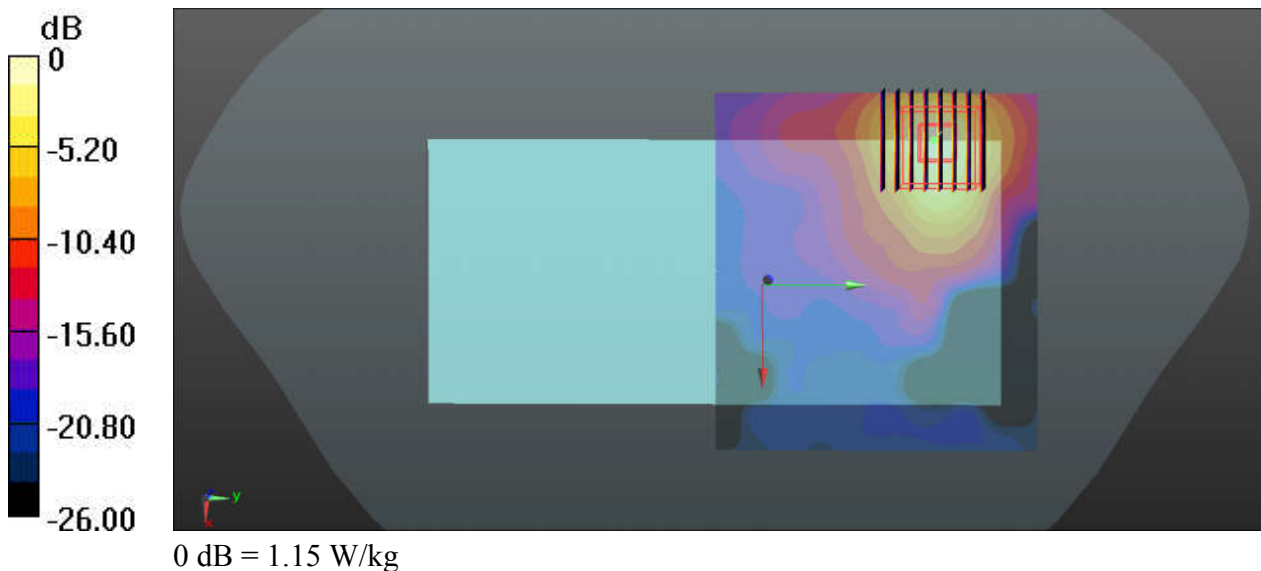
Communication System: UID 0, WIFI (0); Frequency: 5795 MHz; Duty Cycle: 1:1.038
Medium: HSL_5750_190922 Medium parameters used: $f = 5795$ MHz; $\sigma = 5.214$ S/m; $\epsilon_r = 35.803$;
 $\rho = 1000$ kg/m³
Ambient Temperature : 23.8 °C; Liquid Temperature : 22.5 °C

DASY5 Configuration:

- Probe: EX3DV4 - SN3819; ConvF(4.77, 4.77, 4.77); Calibrated: 2019.03.01;
- Sensor-Surface: 1.4mm (Mechanical Surface Detection)
- Electronics: DAE4 Sn715; Calibrated: 2019.01.23
- Phantom: SAM (Front) with CRP v5.0; Type: QD000P40CD; Serial: TP:1795
- Measurement SW: DASY52, Version 52.8 (8); SEMCAD X Version 14.6.10 (7331)

Ch159/Area Scan (101x91x1): Interpolated grid: dx=10mm, dy=10mm
Maximum value of SAR (interpolated) = 1.12 W/kg

Ch159/Zoom Scan (8x8x7)/Cube 0: Measurement grid: dx=4mm, dy=4mm, dz=1.4mm
Reference Value = 1.499 V/m; Power Drift = 0.07 dB
Peak SAR (extrapolated) = 2.06 W/kg
SAR(1 g) = 0.466 W/kg; SAR(10 g) = 0.148 W/kg
Maximum value of SAR (measured) = 1.15 W/kg



48-1_GSM850_GPRS(3 Tx slots)_Back_15mm_Ch251

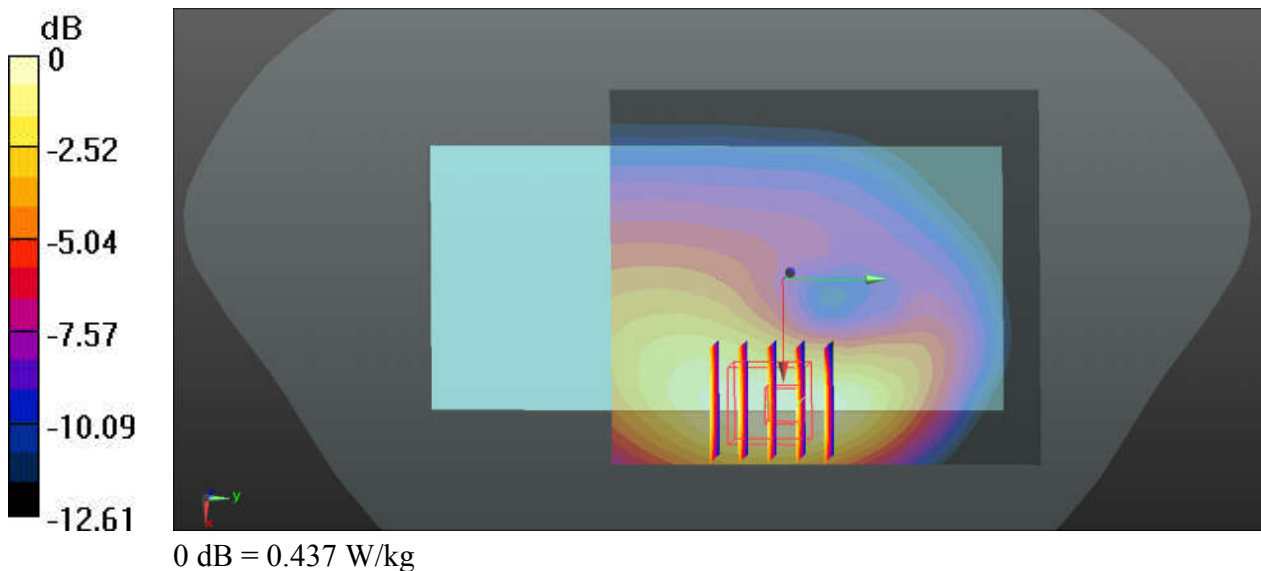
Communication System: UID 0, GPRS/EDGE11 (0); Frequency: 848.8 MHz; Duty Cycle: 1:2.77
Medium: HSL_835_190921 Medium parameters used: $f = 849$ MHz; $\sigma = 0.941$ S/m; $\epsilon_r = 41.625$; $\rho = 1000$ kg/m³
Ambient Temperature : 23.5 °C; Liquid Temperature : 22.6 °C

DASY5 Configuration:

- Probe: EX3DV4 - SN3819; ConvF(9.57, 9.57, 9.57); Calibrated: 2019.03.01;
- Sensor-Surface: 2mm (Mechanical Surface Detection)
- Electronics: DAE4 Sn715; Calibrated: 2019.01.23
- Phantom: SAM (Front) with CRP v5.0; Type: QD000P40CD; Serial: TP:1795
- Measurement SW: DASY52, Version 52.8 (8); SEMCAD X Version 14.6.10 (7331)

Ch251/Area Scan (71x81x1): Interpolated grid: dx=15mm, dy=15mm
Maximum value of SAR (interpolated) = 0.450 W/kg

Ch251/Zoom Scan (5x5x7)/Cube 0: Measurement grid: dx=8mm, dy=8mm, dz=5mm
Reference Value = 12.82 V/m; Power Drift = -0.09 dB
Peak SAR (extrapolated) = 0.506 W/kg
SAR(1 g) = 0.348 W/kg; SAR(10 g) = 0.226 W/kg
Maximum value of SAR (measured) = 0.437 W/kg



49-1_GSM1900_GPRS(3 Tx slots)_Back_15mm_Ch512

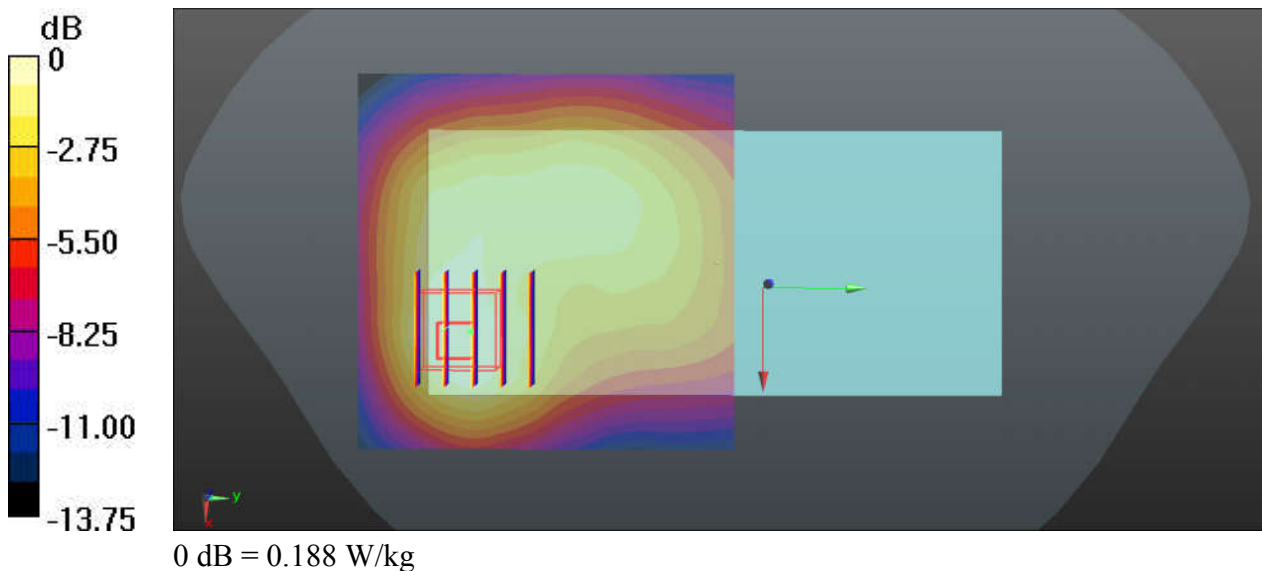
Communication System: UID 0, GPRS/EDGE11 (0); Frequency: 1850.2 MHz; Duty Cycle: 1:2.77
Medium: HSL_1900_190920 Medium parameters used: $f = 1850.2$ MHz; $\sigma = 1.403$ S/m; $\epsilon_r = 40.295$; $\rho = 1000$ kg/m³
Ambient Temperature : 23.6 °C; Liquid Temperature : 22.7 °C

DASY5 Configuration:

- Probe: EX3DV4 - SN3819; ConvF(8.27, 8.27, 8.27); Calibrated: 2019.03.01;
- Sensor-Surface: 2mm (Mechanical Surface Detection)
- Electronics: DAE4 Sn715; Calibrated: 2019.01.23
- Phantom: SAM (Front) with CRP v5.0; Type: QD000P40CD; Serial: TP:1795
- Measurement SW: DASY52, Version 52.8 (8); SEMCAD X Version 14.6.10 (7331)

Ch512/Area Scan (71x71x1): Interpolated grid: dx=15mm, dy=15mm
Maximum value of SAR (interpolated) = 0.197 W/kg

Ch512/Zoom Scan (5x5x7)/Cube 0: Measurement grid: dx=8mm, dy=8mm, dz=5mm
Reference Value = 7.469 V/m; Power Drift = -0.08 dB
Peak SAR (extrapolated) = 0.241 W/kg
SAR(1 g) = 0.147 W/kg; SAR(10 g) = 0.088 W/kg
Maximum value of SAR (measured) = 0.188 W/kg



50-1_WCDMA V_RMC 12.2Kbps_Back_15mm_Ch4182

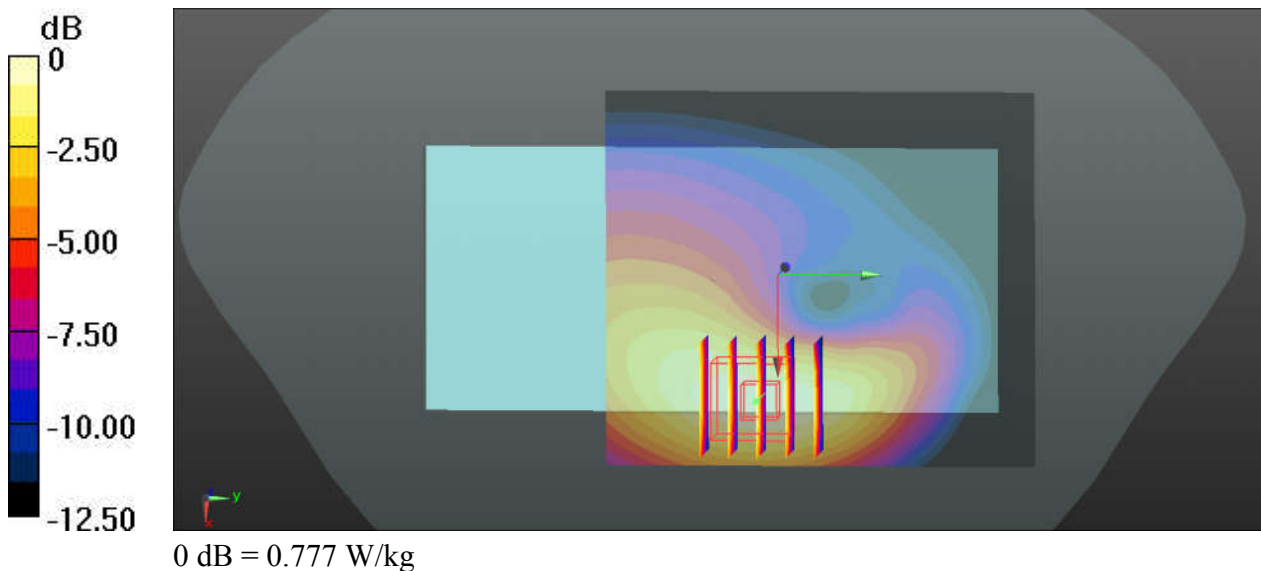
Communication System: UID 0, UMTS (0); Frequency: 836.4 MHz; Duty Cycle: 1:1
Medium: HSL_835_190921 Medium parameters used: $f = 836.5$ MHz; $\sigma = 0.93$ S/m; $\epsilon_r = 41.777$; $\rho = 1000$ kg/m³
Ambient Temperature : 23.5 °C; Liquid Temperature : 22.6 °C

DASY5 Configuration:

- Probe: EX3DV4 - SN3819; ConvF(9.57, 9.57, 9.57); Calibrated: 2019.03.01;
- Sensor-Surface: 2mm (Mechanical Surface Detection)
- Electronics: DAE4 Sn715; Calibrated: 2019.01.23
- Phantom: SAM (Front) with CRP v5.0; Type: QD000P40CD; Serial: TP:1795
- Measurement SW: DASY52, Version 52.8 (8); SEMCAD X Version 14.6.10 (7331)

Ch4182/Area Scan (71x81x1): Interpolated grid: dx=15mm, dy=15mm
Maximum value of SAR (interpolated) = 0.771 W/kg

Ch4182/Zoom Scan (5x5x7)/Cube 0: Measurement grid: dx=8mm, dy=8mm, dz=5mm
Reference Value = 16.56 V/m; Power Drift = -0.11 dB
Peak SAR (extrapolated) = 0.892 W/kg
SAR(1 g) = 0.619 W/kg; SAR(10 g) = 0.405 W/kg
Maximum value of SAR (measured) = 0.777 W/kg



51-1_WCDMA IV_RMC 12.2Kbps_Back_15mm_Ch1312

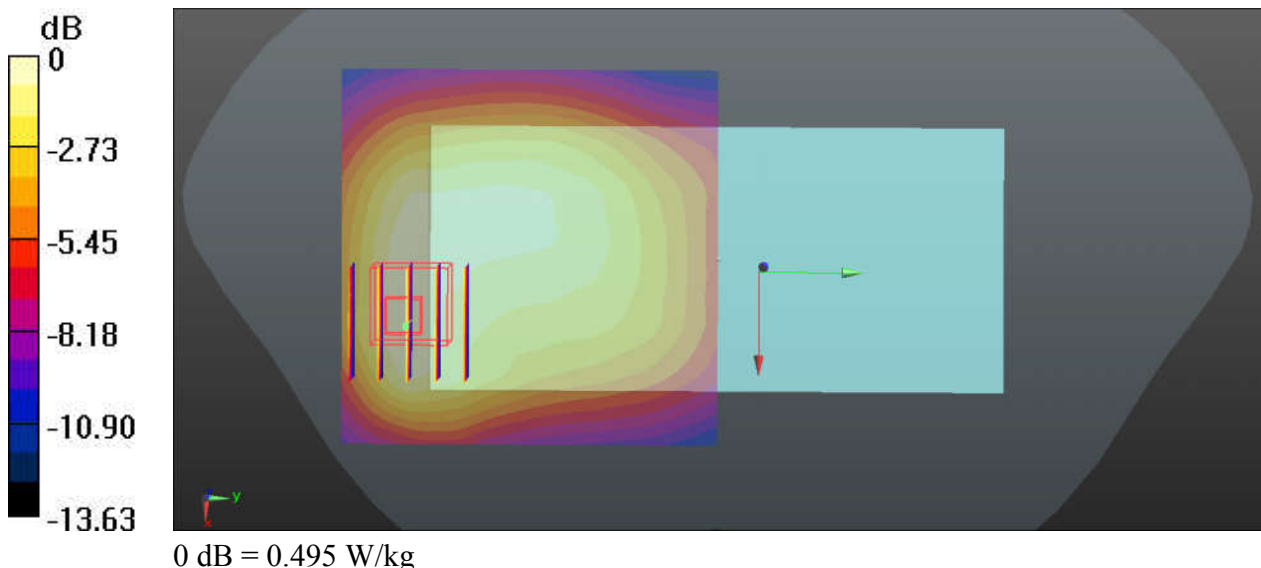
Communication System: UID 0, UMTS (0); Frequency: 1712.4 MHz; Duty Cycle: 1:1
Medium: HSL_1750_190920 Medium parameters used: $f = 1712.4$ MHz; $\sigma = 1.342$ S/m; $\epsilon_r = 41.761$; $\rho = 1000$ kg/m³
Ambient Temperature : 23.7 °C; Liquid Temperature : 22.5 °C

DASY5 Configuration:

- Probe: EX3DV4 - SN3819; ConvF(8.54, 8.54, 8.54); Calibrated: 2019.03.01;
- Sensor-Surface: 2mm (Mechanical Surface Detection)
- Electronics: DAE4 Sn715; Calibrated: 2019.01.23
- Phantom: SAM (Front) with CRP v5.0; Type: QD000P40CD; Serial: TP:1795
- Measurement SW: DASY52, Version 52.8 (8); SEMCAD X Version 14.6.10 (7331)

Ch1312/Area Scan (71x71x1): Interpolated grid: dx=15mm, dy=15mm
Maximum value of SAR (interpolated) = 0.532 W/kg

Ch1312/Zoom Scan (5x5x7)/Cube 0: Measurement grid: dx=8mm, dy=8mm, dz=5mm
Reference Value = 9.820 V/m; Power Drift = 0.01 dB
Peak SAR (extrapolated) = 0.582 W/kg
SAR(1 g) = 0.381 W/kg; SAR(10 g) = 0.242 W/kg
Maximum value of SAR (measured) = 0.495 W/kg



52-1_WCDMA II_RMC 12.2Kbps_Back_15mm_Ch9538

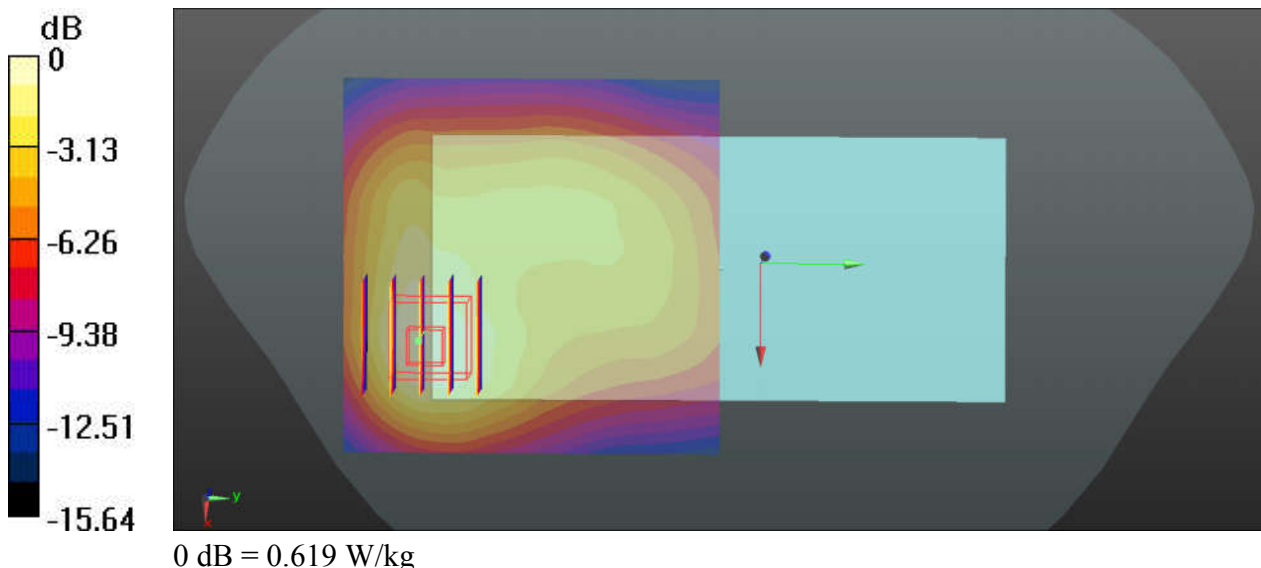
Communication System: UID 0, UMTS (0); Frequency: 1907.6 MHz; Duty Cycle: 1:1
Medium: HSL_1900_190920 Medium parameters used: $f = 1908 \text{ MHz}$; $\sigma = 1.463 \text{ S/m}$; $\epsilon_r = 40.033$;
 $\rho = 1000 \text{ kg/m}^3$
Ambient Temperature : $23.6 \text{ }^\circ\text{C}$; Liquid Temperature : $22.7 \text{ }^\circ\text{C}$

DASY5 Configuration:

- Probe: EX3DV4 - SN3819; ConvF(8.27, 8.27, 8.27); Calibrated: 2019.03.01;
- Sensor-Surface: 2mm (Mechanical Surface Detection)
- Electronics: DAE4 Sn715; Calibrated: 2019.01.23
- Phantom: SAM (Front) with CRP v5.0; Type: QD000P40CD; Serial: TP:1795
- Measurement SW: DASY52, Version 52.8 (8); SEMCAD X Version 14.6.10 (7331)

Ch9538/Area Scan (71x71x1): Interpolated grid: $dx=15\text{mm}$, $dy=15\text{mm}$
Maximum value of SAR (interpolated) = 0.667 W/kg

Ch9538/Zoom Scan (5x5x7)/Cube 0: Measurement grid: $dx=8\text{mm}$, $dy=8\text{mm}$, $dz=5\text{mm}$
Reference Value = 10.20 V/m ; Power Drift = -0.03 dB
Peak SAR (extrapolated) = 0.774 W/kg
SAR(1 g) = 0.465 W/kg ; SAR(10 g) = 0.275 W/kg
Maximum value of SAR (measured) = 0.619 W/kg



53-1_CDMA2000 BC0_RC3 SO32 (F+SCH) _Back_15mm_Ch1013

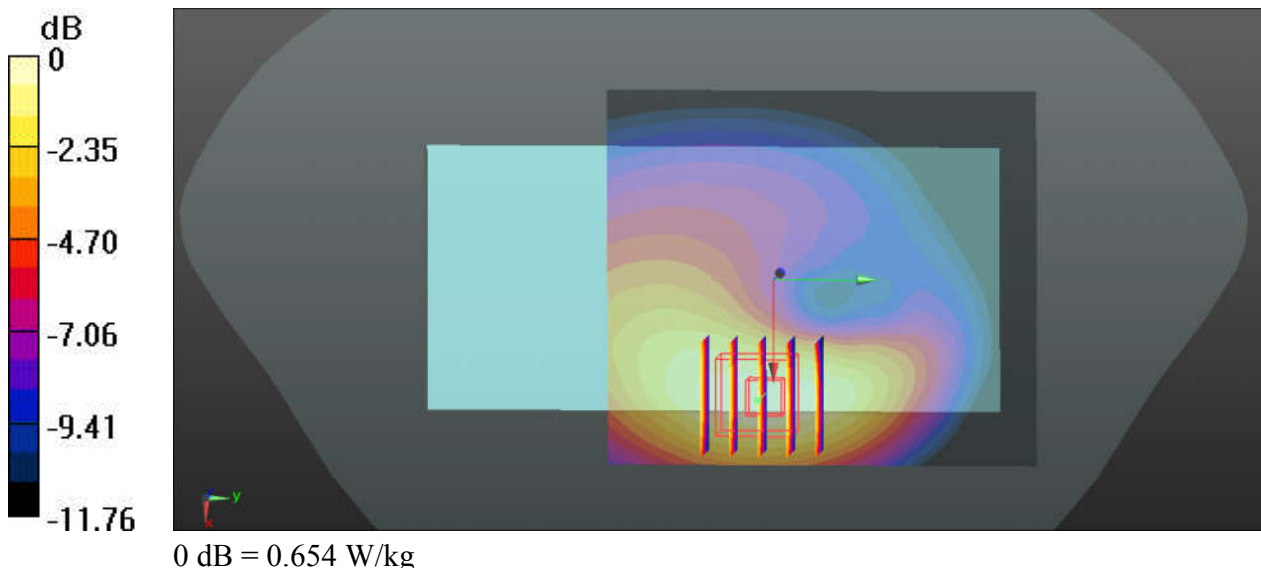
Communication System: UID 0, CDMA2000 (0); Frequency: 824.7 MHz; Duty Cycle: 1:1
Medium: HSL_835_190921 Medium parameters used: $f = 824.7$ MHz; $\sigma = 0.92$ S/m; $\epsilon_r = 41.909$; $\rho = 1000$ kg/m³
Ambient Temperature : 23.5 °C; Liquid Temperature : 22.6 °C

DASY5 Configuration:

- Probe: EX3DV4 - SN3819; ConvF(9.57, 9.57, 9.57); Calibrated: 2019.03.01;
- Sensor-Surface: 2mm (Mechanical Surface Detection)
- Electronics: DAE4 Sn715; Calibrated: 2019.01.23
- Phantom: SAM (Front) with CRP v5.0; Type: QD000P40CD; Serial: TP:1795
- Measurement SW: DASY52, Version 52.8 (8); SEMCAD X Version 14.6.10 (7331)

Ch1013/Area Scan (71x81x1): Interpolated grid: dx=15mm, dy=15mm
Maximum value of SAR (interpolated) = 0.652 W/kg

Ch1013/Zoom Scan (5x5x7)/Cube 0: Measurement grid: dx=8mm, dy=8mm, dz=5mm
Reference Value = 16.00 V/m; Power Drift = -0.11 dB
Peak SAR (extrapolated) = 0.753 W/kg
SAR(1 g) = 0.529 W/kg; SAR(10 g) = 0.349 W/kg
Maximum value of SAR (measured) = 0.654 W/kg



54-1_CDMA2000 BC0_RC3 SO32 (F+SCH) _Back_15mm_Ch580

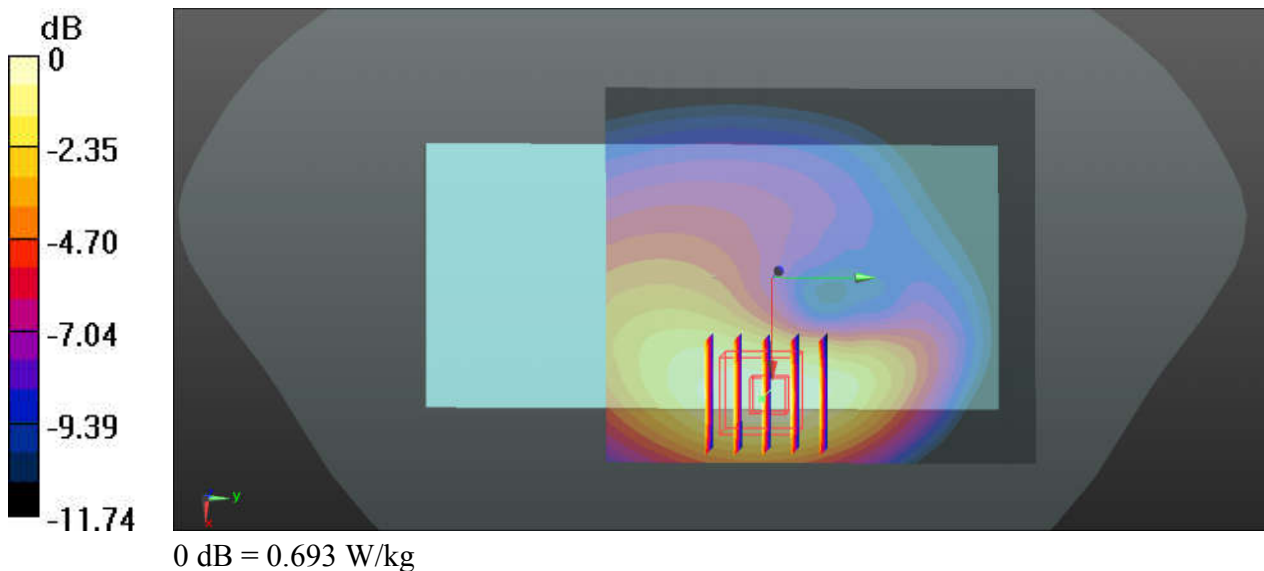
Communication System: UID 0, CDMA2000 (0); Frequency: 820.5 MHz; Duty Cycle: 1:1
Medium: HSL_835_190921 Medium parameters used: $f = 820.5$ MHz; $\sigma = 0.916$ S/m; $\epsilon_r = 41.951$;
 $\rho = 1000$ kg/m³
Ambient Temperature : 23.5 °C; Liquid Temperature : 22.6 °C

DASY5 Configuration:

- Probe: EX3DV4 - SN3819; ConvF(9.57, 9.57, 9.57); Calibrated: 2019.03.01;
- Sensor-Surface: 2mm (Mechanical Surface Detection)
- Electronics: DAE4 Sn715; Calibrated: 2019.01.23
- Phantom: SAM (Front) with CRP v5.0; Type: QD000P40CD; Serial: TP:1795
- Measurement SW: DASY52, Version 52.8 (8); SEMCAD X Version 14.6.10 (7331)

Ch580/Area Scan (71x81x1): Interpolated grid: dx=15mm, dy=15mm
Maximum value of SAR (interpolated) = 0.694 W/kg

Ch580/Zoom Scan (5x5x7)/Cube 0: Measurement grid: dx=8mm, dy=8mm, dz=5mm
Reference Value = 16.59 V/m; Power Drift = -0.10 dB
Peak SAR (extrapolated) = 0.798 W/kg
SAR(1 g) = 0.560 W/kg; SAR(10 g) = 0.370 W/kg
Maximum value of SAR (measured) = 0.693 W/kg



55-1_CDMA2000 BC1_RC3 SO32 (F+SCH) _Back_15mm_Ch1175

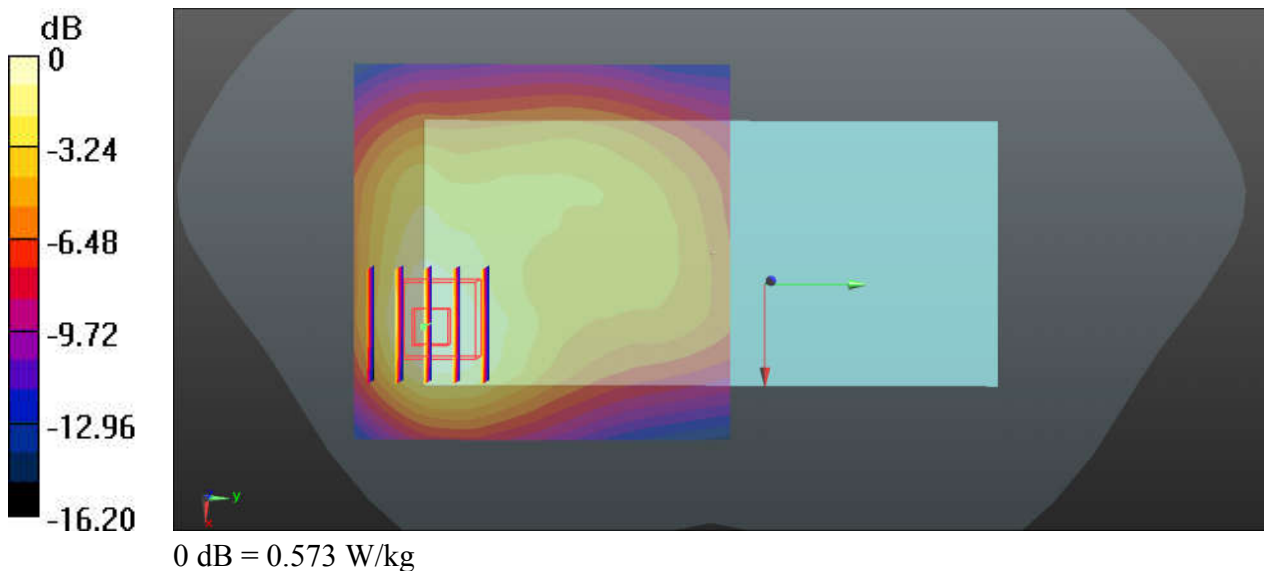
Communication System: UID 0, CDMA2000 (0); Frequency: 1908.75 MHz; Duty Cycle: 1:1
Medium: HSL_1900_190920 Medium parameters used: $f = 1909$ MHz; $\sigma = 1.464$ S/m; $\epsilon_r = 40.029$;
 $\rho = 1000$ kg/m³
Ambient Temperature : 23.6 °C; Liquid Temperature : 22.7 °C

DASY5 Configuration:

- Probe: EX3DV4 - SN3819; ConvF(8.27, 8.27, 8.27); Calibrated: 2019.03.01;
- Sensor-Surface: 2mm (Mechanical Surface Detection)
- Electronics: DAE4 Sn715; Calibrated: 2019.01.23
- Phantom: SAM (Front) with CRP v5.0; Type: QD000P40CD; Serial: TP:1795
- Measurement SW: DASY52, Version 52.8 (8); SEMCAD X Version 14.6.10 (7331)

Ch1175/Area Scan (71x71x1): Interpolated grid: dx=15mm, dy=15mm
Maximum value of SAR (interpolated) = 0.626 W/kg

Ch1175/Zoom Scan (5x5x7)/Cube 0: Measurement grid: dx=8mm, dy=8mm, dz=5mm
Reference Value = 10.58 V/m; Power Drift = 0.10 dB
Peak SAR (extrapolated) = 0.714 W/kg
SAR(1 g) = 0.431 W/kg; SAR(10 g) = 0.257 W/kg
Maximum value of SAR (measured) = 0.573 W/kg



56-1_LTE Band 71_20M_QPSK_1RB_0Offset_Back_15mm_Ch133322

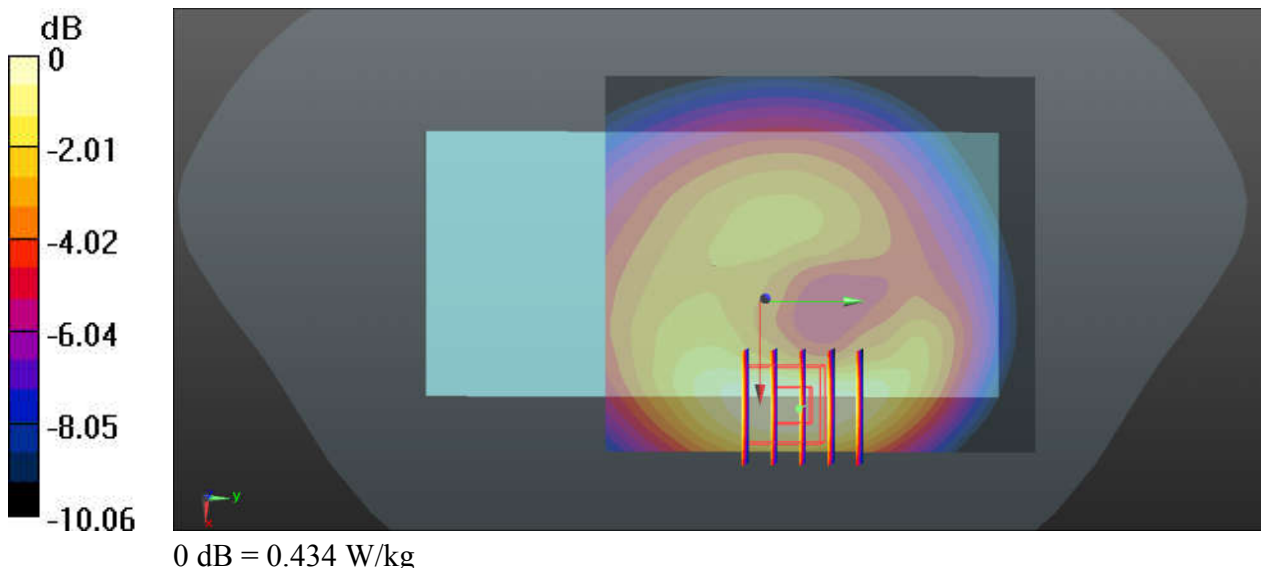
Communication System: UID 0, LTE (0); Frequency: 673 MHz; Duty Cycle: 1:1
Medium: HSL_750_190921 Medium parameters used: $f = 673$ MHz; $\sigma = 0.832$ S/m; $\epsilon_r = 42.301$; $\rho = 1000$ kg/m³
Ambient Temperature : 23.6 °C; Liquid Temperature : 22.4 °C

DASY5 Configuration:

- Probe: EX3DV4 - SN3819; ConvF(10, 10, 10); Calibrated: 2019.03.01;
- Sensor-Surface: 2mm (Mechanical Surface Detection)
- Electronics: DAE4 Sn715; Calibrated: 2019.01.23
- Phantom: SAM (Front) with CRP v5.0; Type: QD000P40CD; Serial: TP:1795
- Measurement SW: DASY52, Version 52.8 (8); SEMCAD X Version 14.6.10 (7331)

Ch133322/Area Scan (71x81x1): Interpolated grid: dx=15mm, dy=15mm
Maximum value of SAR (interpolated) = 0.444 W/kg

Ch133322/Zoom Scan (5x5x7)/Cube 0: Measurement grid: dx=8mm, dy=8mm, dz=5mm
Reference Value = 17.58 V/m; Power Drift = -0.08 dB
Peak SAR (extrapolated) = 0.493 W/kg
SAR(1 g) = 0.360 W/kg; SAR(10 g) = 0.245 W/kg
Maximum value of SAR (measured) = 0.434 W/kg



57-1_LTE Band 12_10M_QPSK_1RB_0Offset_Back_15mm_Ch23095

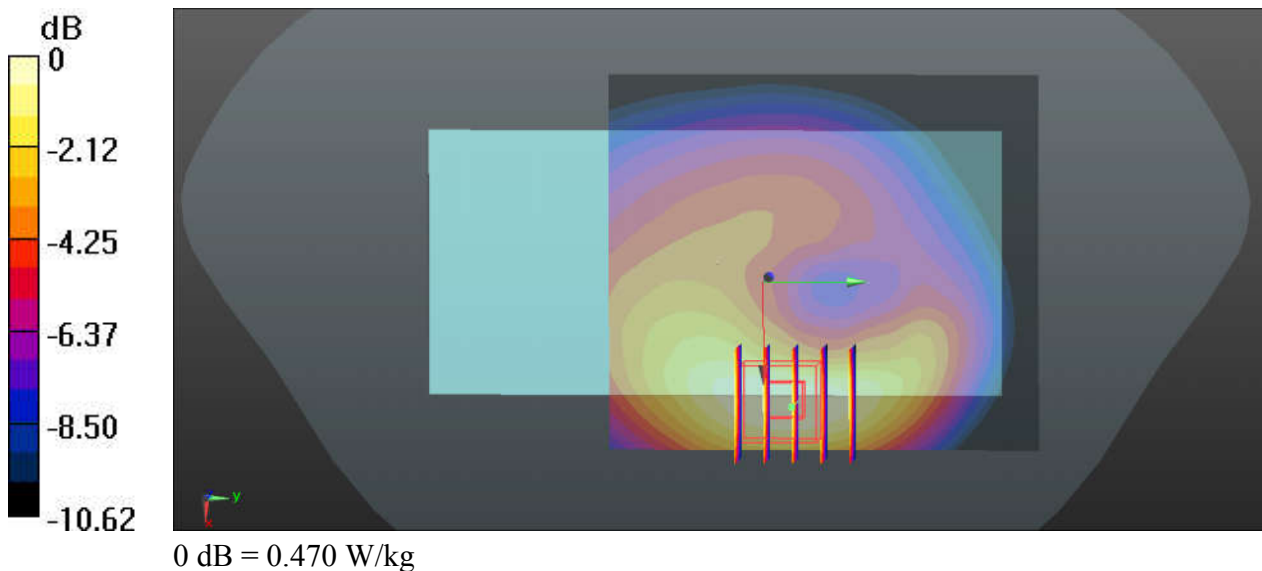
Communication System: UID 0, LTE (0); Frequency: 707.5 MHz; Duty Cycle: 1:1
Medium: HSL_750_190921 Medium parameters used: $f = 707.5$ MHz; $\sigma = 0.858$ S/m; $\epsilon_r = 41.716$;
 $\rho = 1000$ kg/m³
Ambient Temperature : 23.6 °C; Liquid Temperature : 22.4 °C

DASY5 Configuration:

- Probe: EX3DV4 - SN3819; ConvF(10, 10, 10); Calibrated: 2019.03.01;
- Sensor-Surface: 2mm (Mechanical Surface Detection)
- Electronics: DAE4 Sn715; Calibrated: 2019.01.23
- Phantom: SAM (Front) with CRP v5.0; Type: QD000P40CD; Serial: TP:1795
- Measurement SW: DASY52, Version 52.8 (8); SEMCAD X Version 14.6.10 (7331)

Ch23095/Area Scan (71x81x1): Interpolated grid: dx=15mm, dy=15mm
Maximum value of SAR (interpolated) = 0.475 W/kg

Ch23095/Zoom Scan (5x5x7)/Cube 0: Measurement grid: dx=8mm, dy=8mm, dz=5mm
Reference Value = 15.47 V/m; Power Drift = 0.02 dB
Peak SAR (extrapolated) = 0.534 W/kg
SAR(1 g) = 0.391 W/kg; SAR(10 g) = 0.264 W/kg
Maximum value of SAR (measured) = 0.470 W/kg



58-1_LTE Band 13_10M_QPSK_25RB_0Offset_Back_15mm_Ch23230

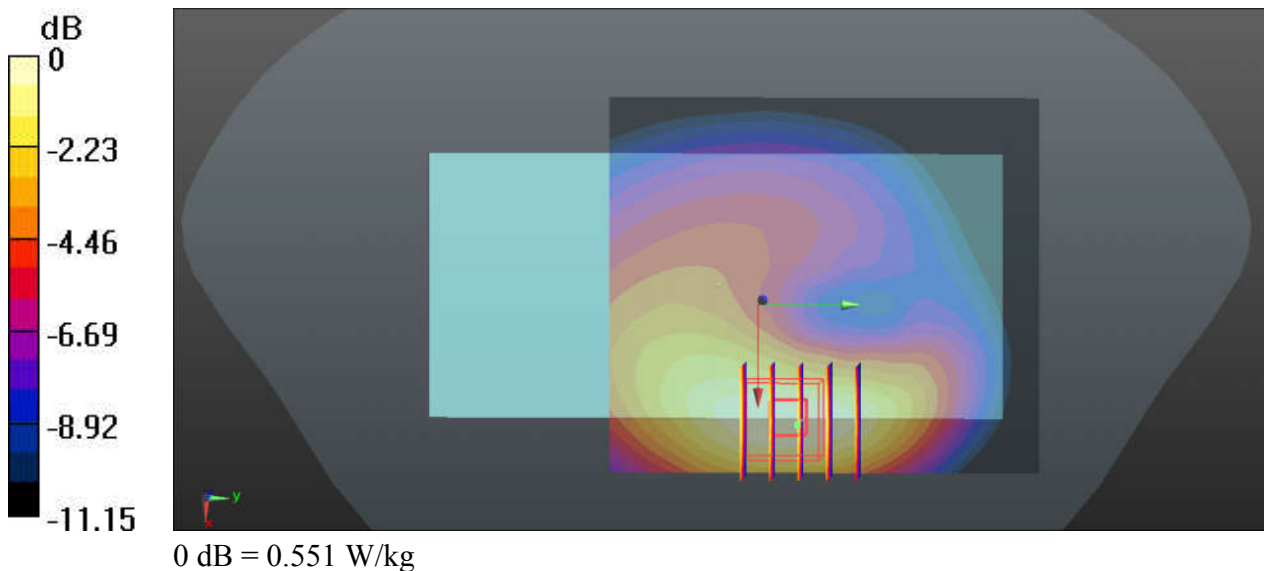
Communication System: UID 0, LTE (0); Frequency: 782 MHz; Duty Cycle: 1:1
Medium: HSL_750_190921 Medium parameters used: $f = 782 \text{ MHz}$; $\sigma = 0.899 \text{ S/m}$; $\epsilon_r = 40.052$; $\rho = 1000 \text{ kg/m}^3$
Ambient Temperature : $23.6 \text{ }^\circ\text{C}$; Liquid Temperature : $22.4 \text{ }^\circ\text{C}$

DASY5 Configuration:

- Probe: EX3DV4 - SN3819; ConvF(10, 10, 10); Calibrated: 2019.03.01;
- Sensor-Surface: 2mm (Mechanical Surface Detection)
- Electronics: DAE4 Sn715; Calibrated: 2019.01.23
- Phantom: SAM (Front) with CRP v5.0; Type: QD000P40CD; Serial: TP:1795
- Measurement SW: DASY52, Version 52.8 (8); SEMCAD X Version 14.6.10 (7331)

Ch23230/Area Scan (71x81x1): Interpolated grid: $dx=15\text{mm}$, $dy=15\text{mm}$
Maximum value of SAR (interpolated) = 0.559 W/kg

Ch23230/Zoom Scan (5x5x7)/Cube 0: Measurement grid: $dx=8\text{mm}$, $dy=8\text{mm}$, $dz=5\text{mm}$
Reference Value = 15.67 V/m ; Power Drift = -0.07 dB
Peak SAR (extrapolated) = 0.631 W/kg
SAR(1 g) = 0.454 W/kg ; SAR(10 g) = 0.305 W/kg
Maximum value of SAR (measured) = 0.551 W/kg



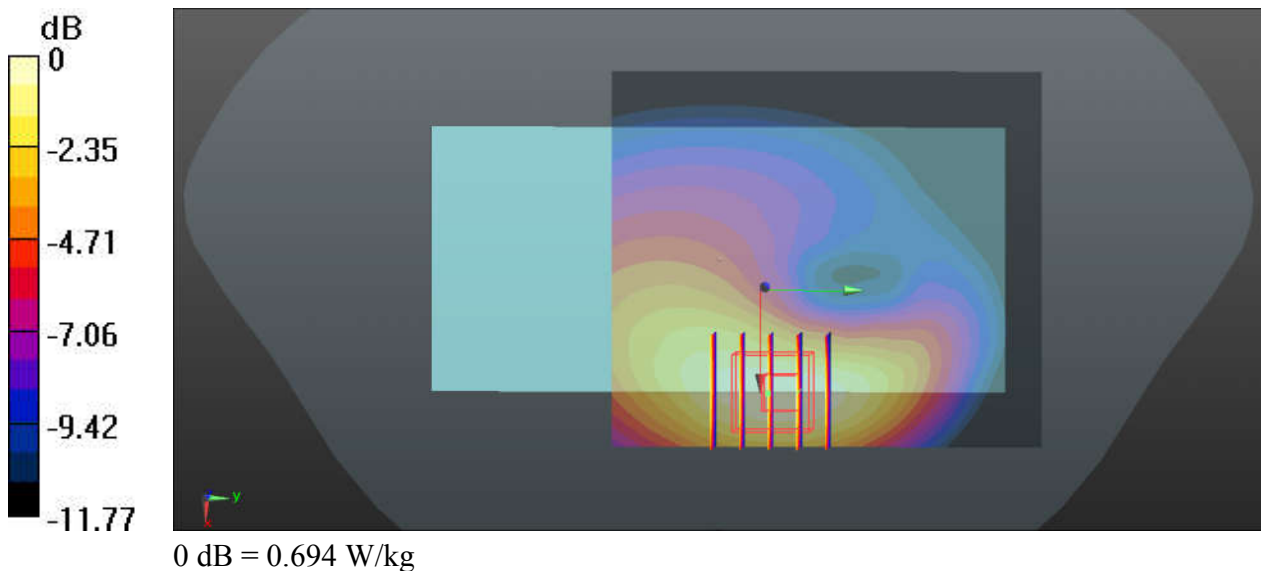
59-1_LTE Band 5_10M_QPSK_1RB_0Offset_Back_15mm_Ch20525

Communication System: UID 0, LTE (0); Frequency: 836.5 MHz; Duty Cycle: 1:1
Medium: HSL_835_190921 Medium parameters used: $f = 836.5$ MHz; $\sigma = 0.93$ S/m; $\epsilon_r = 41.777$; $\rho = 1000$ kg/m³
Ambient Temperature : 23.5 °C; Liquid Temperature : 22.6 °C

- DASY5 Configuration:
- Probe: EX3DV4 - SN3819; ConvF(9.57, 9.57, 9.57); Calibrated: 2019.03.01;
 - Sensor-Surface: 2mm (Mechanical Surface Detection)
 - Electronics: DAE4 Sn715; Calibrated: 2019.01.23
 - Phantom: SAM (Front) with CRP v5.0; Type: QD000P40CD; Serial: TP:1795
 - Measurement SW: DASY52, Version 52.8 (8); SEMCAD X Version 14.6.10 (7331)

Ch20525/Area Scan (71x81x1): Interpolated grid: dx=15mm, dy=15mm
Maximum value of SAR (interpolated) = 0.691 W/kg

Ch20525/Zoom Scan (5x5x7)/Cube 0: Measurement grid: dx=8mm, dy=8mm, dz=5mm
Reference Value = 6.394 V/m; Power Drift = 0.12 dB
Peak SAR (extrapolated) = 0.799 W/kg
SAR(1 g) = 0.560 W/kg; SAR(10 g) = 0.369 W/kg
Maximum value of SAR (measured) = 0.694 W/kg



60-1_LTE Band 26_15M_QPSK_1RB_0Offset_Back_15mm_Ch26965

Communication System: UID 0, LTE (0); Frequency: 841.5 MHz; Duty Cycle: 1:1
Medium: HSL_835_190921 Medium parameters used: $f = 841.5$ MHz; $\sigma = 0.934$ S/m; $\epsilon_r = 41.722$;
 $\rho = 1000$ kg/m³
Ambient Temperature : 23.5 °C; Liquid Temperature : 22.6 °C

DASY5 Configuration:

- Probe: EX3DV4 - SN3819; ConvF(9.57, 9.57, 9.57); Calibrated: 2019.03.01;
- Sensor-Surface: 2mm (Mechanical Surface Detection)
- Electronics: DAE4 Sn715; Calibrated: 2019.01.23
- Phantom: SAM (Front) with CRP v5.0; Type: QD000P40CD; Serial: TP:1795
- Measurement SW: DASY52, Version 52.8 (8); SEMCAD X Version 14.6.10 (7331)

Ch26965/Area Scan (71x81x1): Interpolated grid: dx=15mm, dy=15mm
Maximum value of SAR (interpolated) = 0.614 W/kg

Ch26965/Zoom Scan (5x5x7)/Cube 0: Measurement grid: dx=8mm, dy=8mm, dz=5mm
Reference Value = 6.255 V/m; Power Drift = 0.02 dB
Peak SAR (extrapolated) = 0.713 W/kg
SAR(1 g) = 0.494 W/kg; SAR(10 g) = 0.323 W/kg
Maximum value of SAR (measured) = 0.616 W/kg

