

System Check_Head_13MHz

DUT: CLA13-SN:1020

Communication System: UID 0, CW (0); Frequency: 13 MHz; Duty Cycle: 1:1

Medium: HSL_13_230907 Medium parameters used: $f = 13$ MHz; $\sigma = 0.746$ S/m; $\epsilon_r = 56.426$; $\rho = 1000$ kg/m³

Ambient Temperature : 23.3 °C; Liquid Temperature : 22.4 °C

DASY5 Configuration:

- Probe: EX3DV4 - SN3819; ConvF(15.28, 15.28, 15.28); Calibrated: 2023/6/6
- Sensor-Surface: 1.4mm (Mechanical Surface Detection)
- Electronics: DAE4 Sn1437; Calibrated: 2022/11/23
- Phantom: ELI v4.0; Type: QDOVA001BB; Serial: TP:1113
- Measurement SW: DASY52, Version 52.10 (3); SEMCAD X Version 14.6.13 (7474)

Pin=1000mW/Area Scan (141x141x1): Interpolated grid: dx=1.500 mm, dy=1.500 mm

Maximum value of SAR (interpolated) = 0.956 W/kg

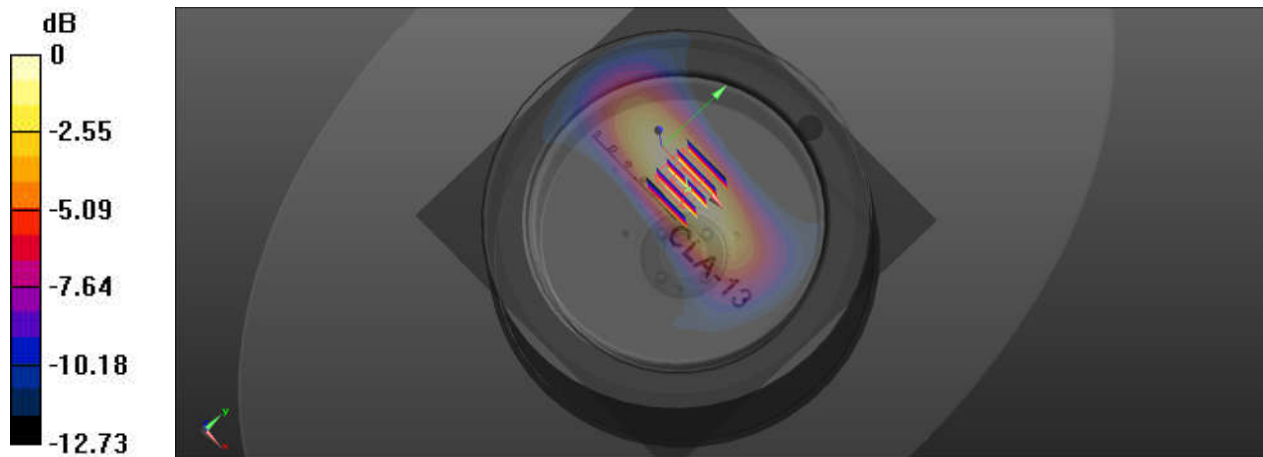
Pin=1000mW/Zoom Scan (5x5x7)/Cube 0: Measurement grid: dx=8mm, dy=8mm, dz=5mm

Reference Value = 23.49 V/m; Power Drift = -0.11 dB

Peak SAR (extrapolated) = 1.24 W/kg

SAR(1 g) = 0.597 W/kg; SAR(10 g) = 0.370 W/kg

Maximum value of SAR (measured) = 0.951 W/kg



0 dB = 0.956 W/kg