

Measurement Report for Device, FRONT, Validation band, CW, Channel 10000 (10000.0 MHz)

Device Under Test Properties

Model, Manufacturer	Dimensions [mm]	IMEI	DUT Type
Device,	100.0 x 100.0 x 105.0		10G Source

Exposure Conditions

Phantom Section	Position, Test Distance [mm]	Band	Group, UID	Frequency [MHz], Channel Number	Conversion Factor
5G	FRONT, 10.00	Validation band	CW, 0--	10000.0, 10000	1.0

Hardware Setup

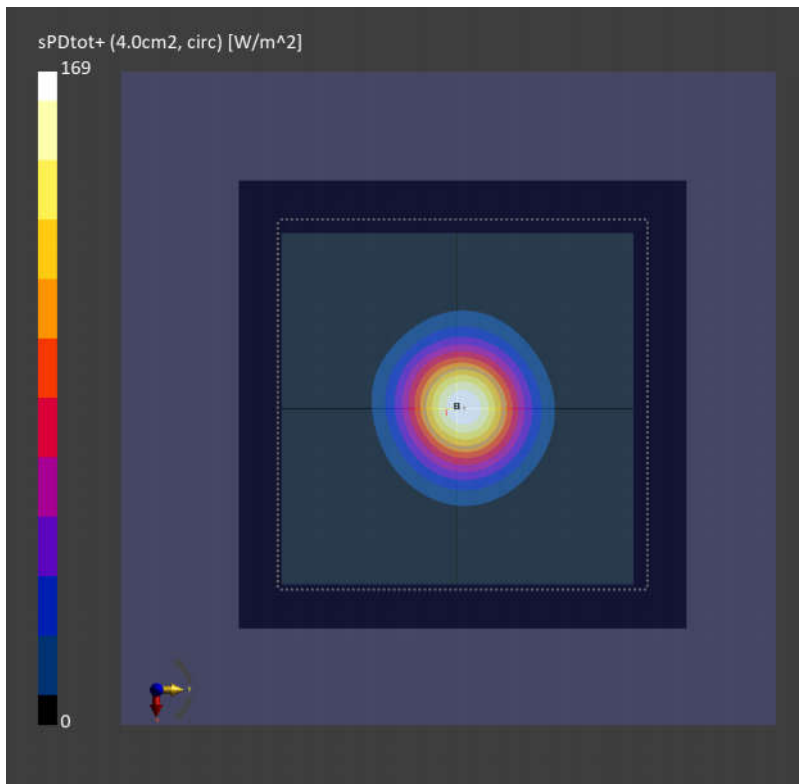
Phantom	Medium	Probe, Calibration Date	DAE, Calibration Date
mmWave	Air -	EUmmWV4 - SN9432_F1-55GHz, 2021-11-29	DAE4 Sn1210, 2022-04-12

Scans Setup

Scan Type	5G Scan
Grid Extents [mm]	120.0 x 120.0
Grid Steps [lambda]	0.25 x 0.25
Sensor Surface [mm]	10.0
MAIA	N/A

Measurement Results

Scan Type	5G Scan
Date	2022-11-20
Avg. Area [cm ²]	4.00
psPDn+ [W/m ²]	168
psPDtot+ [W/m ²]	169
psPDmod+ [W/m ²]	172
E _{max} [V/m]	295
Power Drift [dB]	0.01



System Cheek_6500MHz

DUT: D6.5GHzV2-SN:1026

Communication System: Custom Band; Frequency: 6500.0

Medium: HSL_6500_221202 Medium parameters used: $f = 6500.0$ MHz; $\sigma = 6.08$ S/m; $\epsilon_r = 34.0$

Ambient Temperature: 23.4°C; Liquid Temperature: 22.6°C

DASY6 Configuration:

- Probe: EX3DV4 - SN3935; ConvF(5.8, 5.8, 5.8); Calibrated: 2022/6/20
- Sensor-Surface: 1.4 mm
- Electronics: DAE4 Sn1210; Calibrated: 2022/4/12
- Phantom: Twin-SAM1(P1aP2a20); Type: QD 000 P40 CD; Serial: TP:1670
- Measurement Software: cDASY6 V16.0.0.116
- UID: CW, 0--

Area Scan (51.0 mm x 51.0 mm): Measurement Grid: 8.5 mm x 8.5 mm

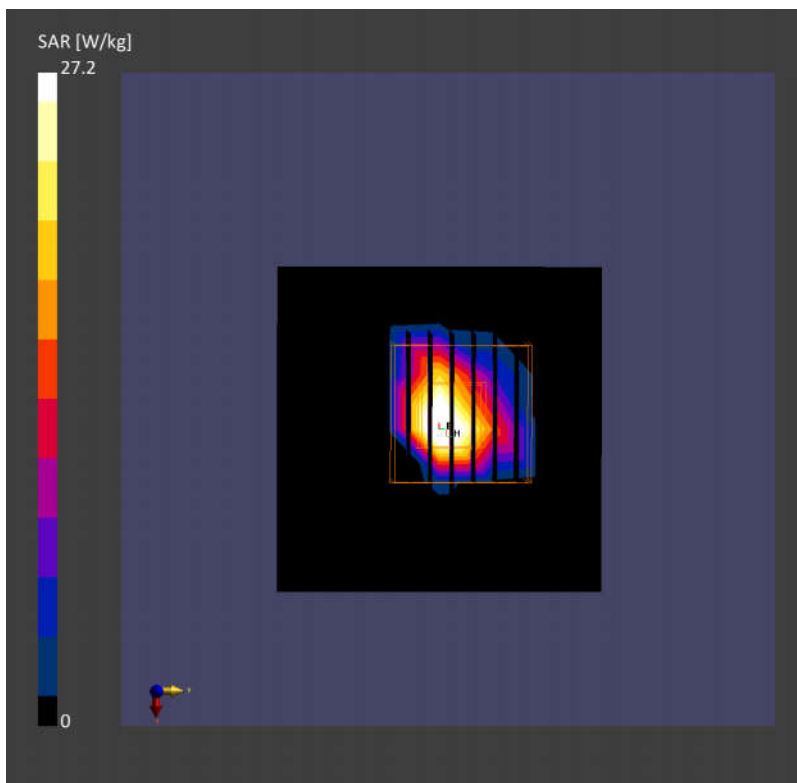
SAR (1g) = 21.8 W/kg; SAR (10g) = 4.66 W/kg;

Zoom Scan (22.0 mm x 22.0 mm x 22.0 mm): Measurement Grid: 3.4 mm x 3.4 mm x 1.4 mm

Power Drift = 0.02 dB

SAR (1g) = 27.2 W/kg; SAR (10g) = 5.09 W/kg;

psAPD (4.0cm², sq) = 124 [W/m²]



System Cheek_6500MHz

DUT: D6.5GHzV2-SN:1026

Communication System: Custom Band; Frequency: 6500.0

Medium: HSL_6500_221206 Medium parameters used: $f = 6500.0$ MHz; $\sigma = 6.18$ S/m; $\epsilon = 33.715$

Ambient Temperature: 23.6°C; Liquid Temperature: 22.5°C

DASY6 Configuration:

- Probe: EX3DV4 - SN3935; ConvF(5.8, 5.8, 5.8); Calibrated: 2022/6/20
- Sensor-Surface: 1.4 mm
- Electronics: DAE4 Sn1210; Calibrated: 2022/4/12
- Phantom: Twin-SAM1(P1aP2a20); Type: QD 000 P40 CD; Serial: TP:1670
- Measurement Software: cDASY6 V16.0.0.116
- UID: CW, 0--

Area Scan (51.0 mm x 51.0 mm): Measurement Grid: 8.5 mm x 8.5 mm

SAR (1g) = 21.9 W/kg; SAR (10g) = 4.51 W/kg;

Zoom Scan (22.0 mm x 22.0 mm x 22.0 mm): Measurement Grid: 3.4 mm x 3.4 mm x 1.4 mm

Power Drift = 0.06 dB

SAR (1g) = 27.1 W/kg; SAR (10g) = 4.99 W/kg;

psAPD (4.0cm², sq) = 121 [W/m²]

