



天线规格书

Antenna specification for approval

客户名称: 神牛摄影

机型: 水下补光灯

天线类型: BT天线

天线频段: 2.4G

BT天线料号: F084A-2B4-A

颜色: 白色

连接线料号: P1-9941-160-B

制作日期: :2022-05-20

Version: A

承认签章 Admit that signature			
云希承认 Confirmation Signature		客户承认 Customer Approved	
承辦人 Responsible		承辦人 Responsible	
品质 QC		主管 Chief	
核准 Approve		核准 Approve	
日期 Date		日期 Date	

目 录

封面.....	1
目录.....	2
一 概述 -----	3
二 匹配电路图、机器图、天线图-----	3
三 驻波图-----	4
四 结构图纸 -----	5-6

一：概述

- This approval sheet supports for MID project. FPC antennas include in this project. This report is for the performance of BT antenna.
- Antenna shape size: Meet the requirement of MID
- Antenna band: 2400MHz~2500MHz
- Antenna material: Antenna material meet the requirement of MID
- Adhesive performance: Adhesive performance meet the requirement of MID
- Antenna performance meet the spec below:

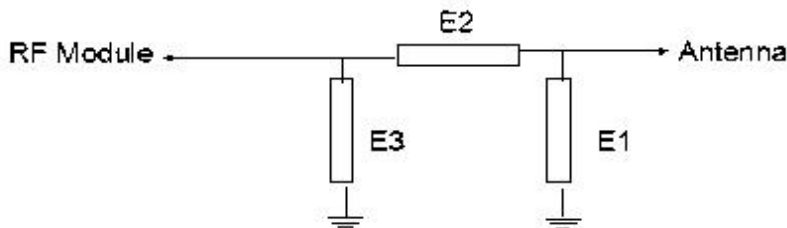
Description	2.4GHz~2.5GHz	Units
VSWR	≤2.0	
Average Antenna Gain	≥2.0	dB
Antenna Efficiency	≥60	%
Feed Impedance	50 ohms	
Operating Temperature	-40 to +85 deg C	
Polarization / Azimuth	Linear / Omni-directional	

● Mechanical Information

Mechanical Dimension	
Cable Length	/
Description	BT antenna
Material	/
Coaxial Cable	/
Environmental	
Operation Temperature	-40 to +85 deg C
Storage Temperature	-40 to +85 deg C

二：匹配电路图、机器图片、天线图片

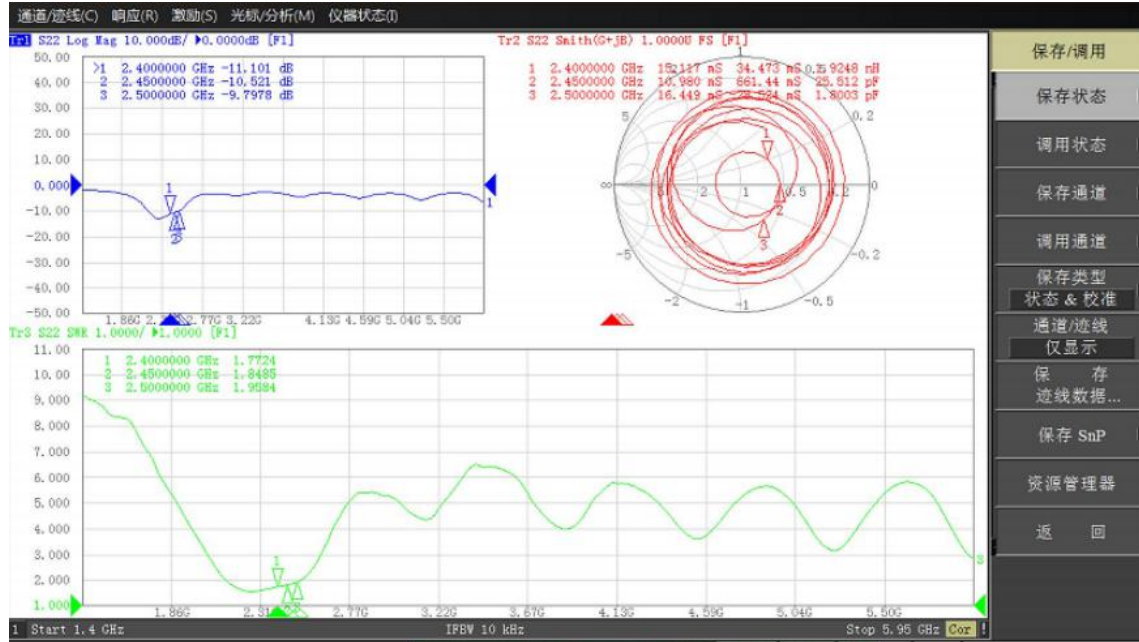
2.1匹配电路图



我司未对天线匹配做修改

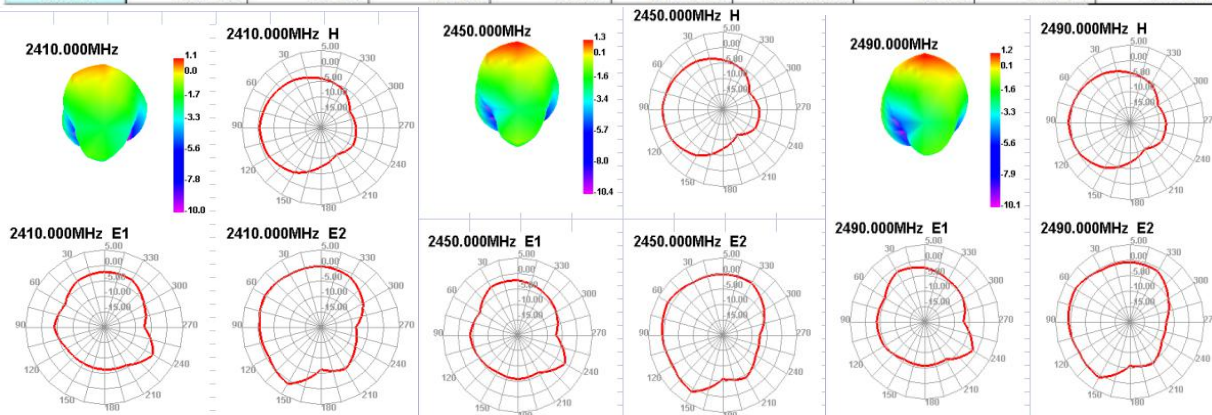
三：驻波比（VSWR）、效率

3.1 驻波比



3.2 效率、增益

Passive Test For WIFI2.4											
Freq (MHz)	Effi (%)	Effi (dB)	Gain (dBi)	Gain (dBd)	UHS (%)	DHIS (%)	Max (dB)	Min (dB)	Attenut Hor	Attenut Ver	
2400	43.21	-3.64	0.68	-1.47	23.027	20.181	0.68	-10.3	49.08	49.18	
2410	47.84	-3.2	1.13	-1.02	25.371	22.472	1.13	-10.01	49.16	49.32	
2420	48.84	-3.11	1.12	-1.03	26.259	22.585	1.12	-10.48	49.39	49.91	
2430	47.23	-3.26	0.95	-1.2	25.156	22.073	0.95	-10.57	49.38	49.71	
2440	48.19	-3.17	0.88	-1.27	25.844	22.349	0.88	-10.65	49.49	49.65	
2450	52.5	-2.8	1.29	-0.86	27.911	24.586	1.29	-10.36	49.73	49.82	
2460	48.14	-3.17	0.99	-1.16	25.763	22.377	0.99	-11.03	49.61	49.88	
2470	45.63	-3.41	0.7	-1.45	23.973	21.654	0.7	-11.12	49.62	49.8	
2480	51.2	-2.91	1.16	-0.99	26.941	24.258	1.16	-10.52	49.77	49.77	
2490	52.38	-2.81	1.19	-0.96	27.122	25.26	1.19	-10.13	49.97	49.86	
2500	48.21	-3.17	0.78	-1.37	25.079	23.126	0.78	-10.73	49.87	49.77	



四：结构图纸

