

FCC Test Report

Client Name : **GODOX PHOTO EQUIPMENT CO.,LTD**

Client Address : **1st to 4th Floor, Building 2/1st to 4th Floor,
Building 4 ,Yaochuan Industrial Zone,
Tangwei Community, Fuhai Street, Baoan
District, Shenzhen, 518103 China**

Product Name : **Dive Light**

Report Date : **Oct. 09, 2022**

Shenzhen Anbotek Compliance Laboratory Limited



Contents

1. General Information	6
1.1. Client Information	6
1.2. Description of Device (EUT)	6
1.3. Auxiliary Equipment Used During Test	7
1.4. Description of Test Configuration	7
1.5. Description Of Test Setup	8
1.6. Test Equipment List	9
1.7. Measurement Uncertainty	10
1.8. Description of Test Facility	10
2. Summary of Test Results	11
3. Conducted Emission Test	12
3.1. Test Standard and Limit	12
3.2. Test Setup	12
3.3. Test Procedure	12
3.4. Test Data	12
4. Radiation Spurious Emission and Band Edge	15
4.1. Test Standard and Limit	15
4.2. Test Setup	15
4.3. Test Procedure	16
4.4. Test Data	17
5. Maximum Peak Output Power Test	25
5.1. Test Standard and Limit	25
5.2. Test Setup	25
5.3. Test Procedure	25
5.4. Test Data	25
6. 6DB Occupy Bandwidth Test	26
6.1. Test Standard and Limit	26
6.2. Test Setup	26
6.3. Test Procedure	26
6.4. Test Data	26
7. Power Spectral Density Test	27
7.1. Test Standard and Limit	27
7.2. Test Setup	27
7.3. Test Procedure	27
7.4. Test Data	27
8. 100kHz Bandwidth of Frequency Band Edge Requirement	28
8.1. Test Standard and Limit	28
8.2. Test Setup	28



8.3. Test Procedure	28
8.4. Test Data	28
9. Antenna Requirement	29
9.1. Test Standard and Requirement	29
9.2. Antenna Connected Construction	29
APPENDIX I -- TEST SETUP PHOTOGRAPH	30
APPENDIX II -- EXTERNAL PHOTOGRAPH	32
APPENDIX III -- INTERNAL PHOTOGRAPH	36
Appendix Test Data	42
Appendix A: DTS Bandwidth	42
Test Result	42
Test Graphs	43
Appendix B: Occupied Channel Bandwidth	46
Test Result	46
Test Graphs	47
Appendix C: Maximum conducted output power	50
Test Result Peak	50
Test Graphs Peak	50
Appendix D: Maximum power spectral density	54
Test Result	54
Test Graphs	55
Appendix E: Band edge measurements	58
Test Result	58
Test Graphs	59
Appendix F: Conducted Spurious Emission	61
Test Result	61
Test Graphs	62
Appendix G: Duty Cycle	71
Test Result	71
Test Graphs	72



TEST REPORT

Applicant : GODOX PHOTO EQUIPMENT CO.,LTD
Manufacturer : GODOX Photo Equipment Co.,Ltd.
Product Name : Dive Light
Model No. : WT40D
Trade Mark : **Godox**
Rating(s) : Input: 5V \equiv 3A, 9V \equiv 3A, 12V \equiv 3A, 15V \equiv 2.7A, 20V \equiv 2A
Li-ion Battery: DC 10.8V, 6000mAh

Test Standard(s) : FCC Part15 Subpart C, Section 15.247

Test Method(s) : ANSI C63.10: 2020, KDB558074 D01 DTS Meas Guidance v05r02

The device described above is tested by Shenzhen Anbotek Compliance Laboratory Limited to determine the maximum emission levels emanating from the device and the severe levels of the device can endure and its performance criterion. The measurement results are contained in this test report and Shenzhen Anbotek Compliance Laboratory Limited is assumed full of responsibility for the accuracy and completeness of these measurements. Also, this report shows that the EUT (Equipment Under Test) is technically compliant with the FCC Part 15 Subpart C requirements.

This report applies to above tested sample only and shall not be reproduced in part without written approval of Shenzhen Anbotek Compliance Laboratory Limited.

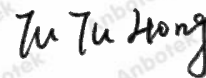
Date of Receipt

Aug. 03, 2022

Date of Test

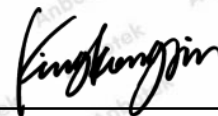
Aug. 03 ~ Sept. 06, 2022

Prepared By



(TuTu Hong)

Approved & Authorized Signer



(Kingkong Jin)



Revision History

Report Version	Description	Issued Date
R00	Original Issue.	Oct. 09, 2022




1. General Information

1.1. Client Information

Applicant	:	GODOX PHOTO EQUIPMENT CO.,LTD
Address	:	1st to 4th Floor, Building 2/1st to 4th Floor, Building 4 ,Yaochuan Industrial Zone, Tangwei Community, Fuhai Street, Baoan District, Shenzhen, 518103 China
Manufacturer	:	GODOX Photo Equipment Co., Ltd.
Address	:	4th Floor of Building 1, 1st to 4th Floor of Building 2, 4th Floor of Building 3, 1st to 4th Floor of Building 4, Yaochuan Industrial Zone, Tangwei Community, Fuhai Street, Bao'an District, Shenzhen 518103, China
Factory	:	GODOX Photo Equipment Co., Ltd.
Address	:	4th Floor of Building 1, 1st to 4th Floor of Building 2, 4th Floor of Building 3, 1st to 4th Floor of Building 4, Yaochuan Industrial Zone, Tangwei Community, Fuhai Street, Bao'an District, Shenzhen 518103, China

1.2. Description of Device (EUT)

Product Name	:	Dive Light
Model No.	:	WT40D
Trade Mark	:	
Test Power Supply	:	AC 120V, 60Hz for adapter/ DC 10.8V battery inside
Test Sample No.	:	1-2-1(Normal Sample), 1-2-2(Engineering Sample)
Adapter	:	N/A
RF Specification		
Operation Mode	:	<input checked="" type="checkbox"/> BT BLE
Support Rate	:	<input checked="" type="checkbox"/> 1Mbps <input checked="" type="checkbox"/> 2Mbps
Operation Frequency	:	2402~2480MHZ
Number of Channel	:	40 Channels
Modulation Type	:	GFSK
Antenna Type	:	PCB Antenna
Antenna Gain(Peak)	:	3.97 dBi (Provided by customer)
Remark: 1) For a more detailed features description, please refer to the manufacturer's specifications or the User's Manual.		



1.3. Auxiliary Equipment Used During Test

Description	Rating(s)
Adapter	M/N: AD651P Input: 100-240V~1.5A, 50-60Hz Output: 5V= 3A, 9V= 3A, 10V= 5A, 12V= 3A, 15V= 3A, 20V= 3.25A

1.4. Description of Test Configuration

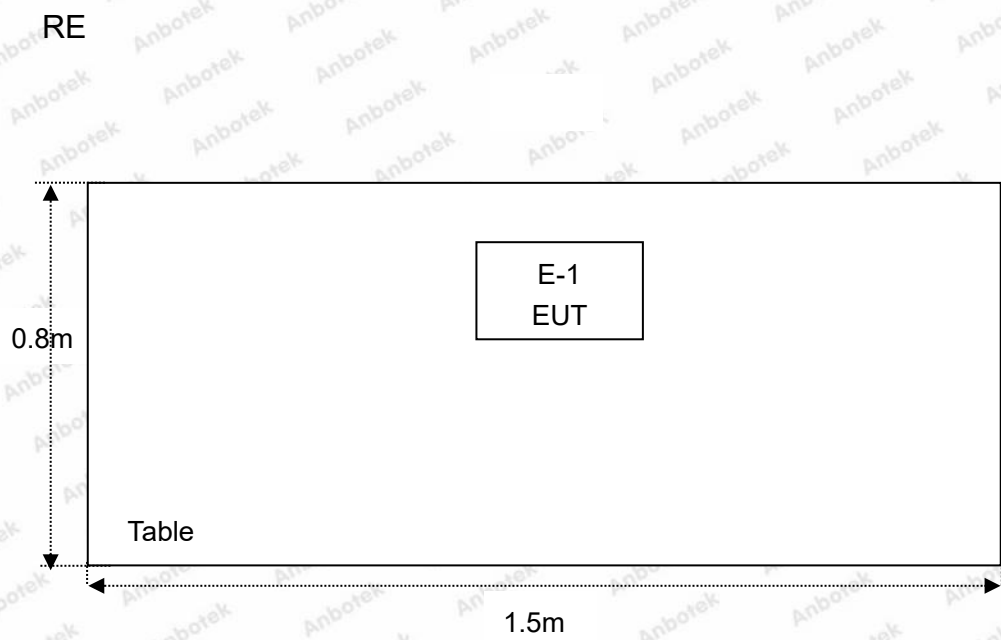
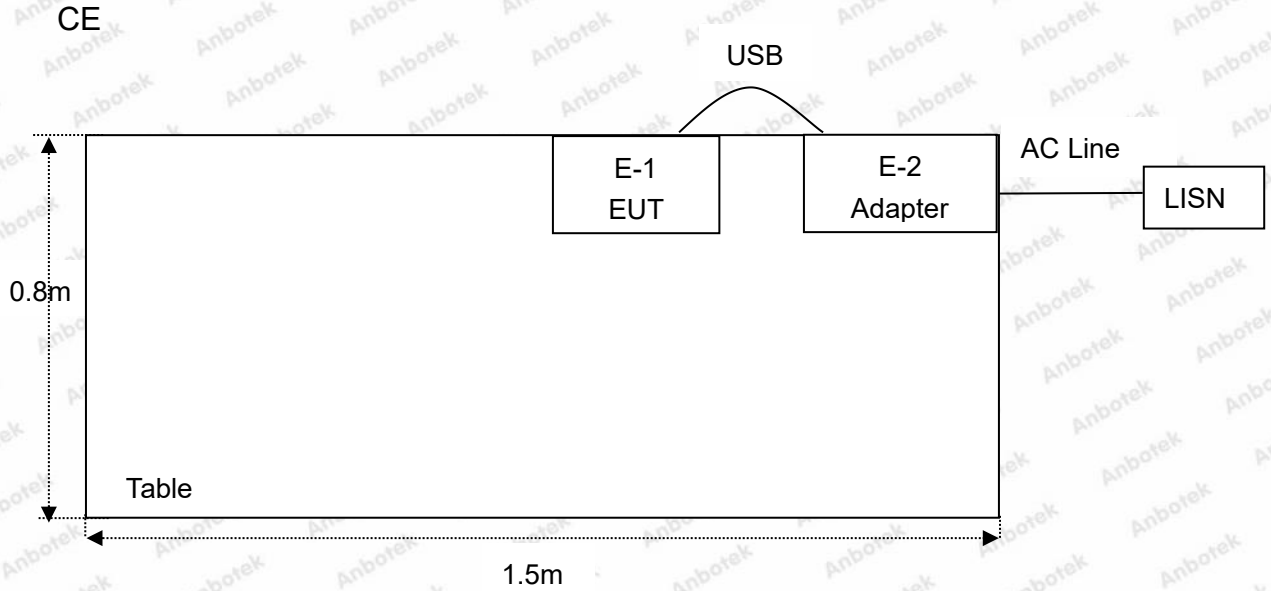
Channel	Freq. (MHz)	Channel	Freq. (MHz)	Channel	Freq. (MHz)	Channel	Freq. (MHz)	Channel	Freq. (MHz)
00	2402	09	2420	18	2438	27	2456	36	2474
01	2404	10	2422	19	2440	28	2458	37	2476
02	2406	11	2424	20	2442	29	2460	38	2478
03	2408	12	2426	21	2444	30	2462	39	2480
04	2410	13	2428	22	2446	31	2464		
05	2412	14	2430	23	2448	32	2466		
06	2414	15	2432	24	2450	33	2468		
07	2416	16	2434	25	2452	34	2470		
08	2418	17	2436	26	2454	35	2472		

Note:

1. The engineering test program was provided and the EUT was programmed to be in continuously transmitting mode.
2. EUT was tested with channel 00, 19 and 39.



1.5. Description Of Test Setup



1.6. Test Equipment List

Item	Equipment	Manufacturer	Model No.	Serial No.	Last Cal.	Cal. Interval
1.	Three Phase V-type Artificial Power Network	CYBERTEK	EM5040DT	E215040DT001	Jul 05, 2022	1 Year
2.	EMI Test Receiver	Rohde & Schwarz	ESCI	100627	Oct. 22, 2021	1 Year
3.	EMI Test Receiver	Rohde & Schwarz	ESR26	101481	Oct. 22, 2021	1 Year
4.	RF Switching Unit	Compliance Direction	RSU-M2	38303	Oct. 22, 2021	1 Year
5.	MAX Spectrum Analysis	Agilent	N9020A	MY51170037	Oct. 22, 2021	1 Year
6.	Preamplifier	SKET Electronic	BK1G18G30 D	KD17503	Oct. 22, 2021	1 Year
7.	Double Ridged Horn Antenna	Instruments corporation	GTH-0118	351600	Oct. 22, 2021	2 Year
8.	Bilog Broadband Antenna	Schwarzbeck	VULB9163	VULB 9163-289	Oct. 22, 2021	2 Year
9.	Loop Antenna	Schwarzbeck	FMZB1519B	00053	Oct. 22, 2021	2 Year
10.	Horn Antenna	A-INFO	LB-180400-K F	J211060628	Oct. 22, 2021	2 Year
11.	Pre-amplifier	SONOMA	310N	186860	Oct. 22, 2021	1 Year
12.	EMI Test Software EZ-EMC	SHURPLE	N/A	N/A	N/A	N/A
13.	RF Test Control System	YIHENG	YH3000	2017430	Oct. 22, 2021	1 Year
14.	Power Sensor	DAER	RPR3006W	15I00041SN045	Oct. 22, 2021	1 Year
15.	Power Sensor	DAER	RPR3006W	15I00041SN046	Oct. 22, 2021	1 Year
16.	MXA Spectrum Analysis	KEYSIGHT	N9020A	MY53280032	Oct. 22, 2021	1 Year
17.	MXG RF Vector Signal Generator	Agilent	N5182A	MY48180656	Oct. 22, 2021	1 Year
18.	Signal Generator	Agilent	E4421B	MY41000743	Oct. 22, 2021	1 Year
19.	DC Power Supply	IVYTECH	IV3605	1804D360510	Oct. 22, 2021	1 Year
20.	Constant Temperature Humidity Chamber	ZHONGJIAN	ZJ-KHWS80 B	N/A	Oct. 22, 2021	1 Year



1.7. Measurement Uncertainty

Radiation Uncertainty	:	Ur = 3.9 dB (Horizontal)
	:	Ur = 3.8 dB (Vertical)
Conduction Uncertainty	:	Uc = 3.4 dB

1.8. Description of Test Facility

The test facility is recognized, certified, or accredited by the following organizations:

FCC-Registration No.: 184111

Shenzhen Anbotek Compliance Laboratory Limited, EMC Laboratory has been registered and fully described in a report filed with the (FCC) Federal Communications Commission. The acceptance letter from the FCC is maintained in our files. Registration No. 184111.

ISED-Registration No.: 8058A

Shenzhen Anbotek Compliance Laboratory Limited, EMC Laboratory has been registered and fully described in a report filed with the (ISED) Innovation, Science and Economic Development Canada. The acceptance letter from the ISED is maintained in our files. Registration 8058A.

Test Location

Shenzhen Anbotek Compliance Laboratory Limited.

1/F, Building D, Sogood Science and Technology Park, Sanwei community, Hangcheng Street, Bao'an District, Shenzhen, Guangdong, China.518102



2. Summary of Test Results

Standard Section	Test Item	Result
15.203/15.247(c)	Antenna Requirement	PASS
15.207	Conducted Emission	PASS
15.205/15.209	Spurious Emission	PASS
15.247(b)(3)	Conducted Peak Output Power	PASS
15.247(a)(2)	6dB Occupied Bandwidth	PASS
15.247(e)	Power Spectral Density	PASS
15.247(d)	Band Edge	PASS
Remark: "N/A" is an abbreviation for Not Applicable.		

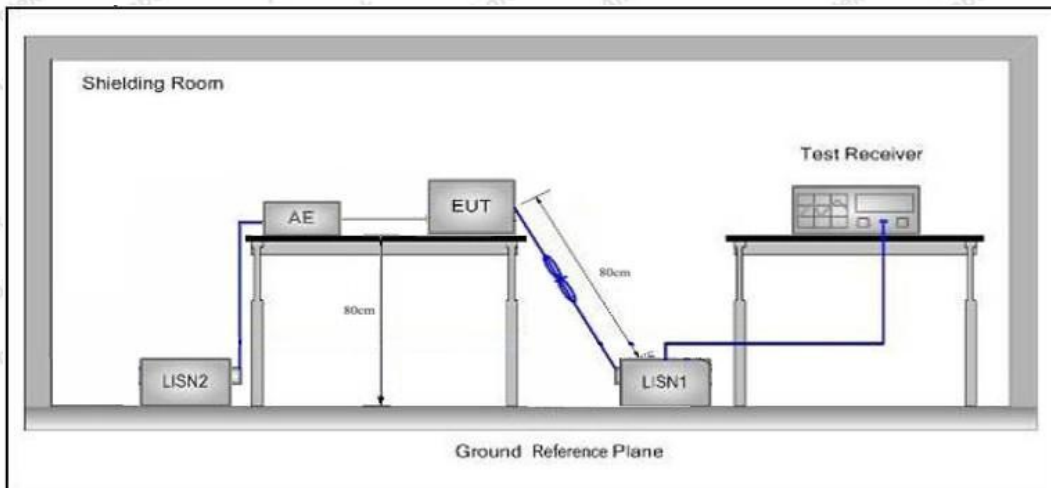


3. Conducted Emission Test

3.1. Test Standard and Limit

Test Standard	FCC Part15 Section 15.207		
Test Limit	Frequency	Maximum RF Line Voltage (dBuV)	
		Quasi-peak Level	Average Level
	150kHz~500kHz	66 ~ 56 *	56 ~ 46 *
	500kHz~5MHz	56	46
	5MHz~30MHz	60	50
Remark: (1) *Decreasing linearly with logarithm of the frequency. (2) The lower limit shall apply at the transition frequency.			

3.2. Test Setup



3.3. Test Procedure

The EUT system is connected to the power mains through a line impedance stabilization network (L.I.S.N.). This provides a 50ohm coupling impedance for the EUT system. Please refer the block diagram of the test setup and photographs. Both sides of AC line are checked to find out the maximum conducted emission. In order to find the maximum emission levels, the relative positions of equipment and all of the interface cables shall be changed according to FCC ANSI C63.10: 2020 on Conducted Emission Measurement.

The bandwidth of test receiver (ESCI) set at 9kHz.

The frequency range from 150kHz to 30MHz is checked.

3.4. Test Data

During the test, pre-scan all modes, only the worst case is recorded in the report.

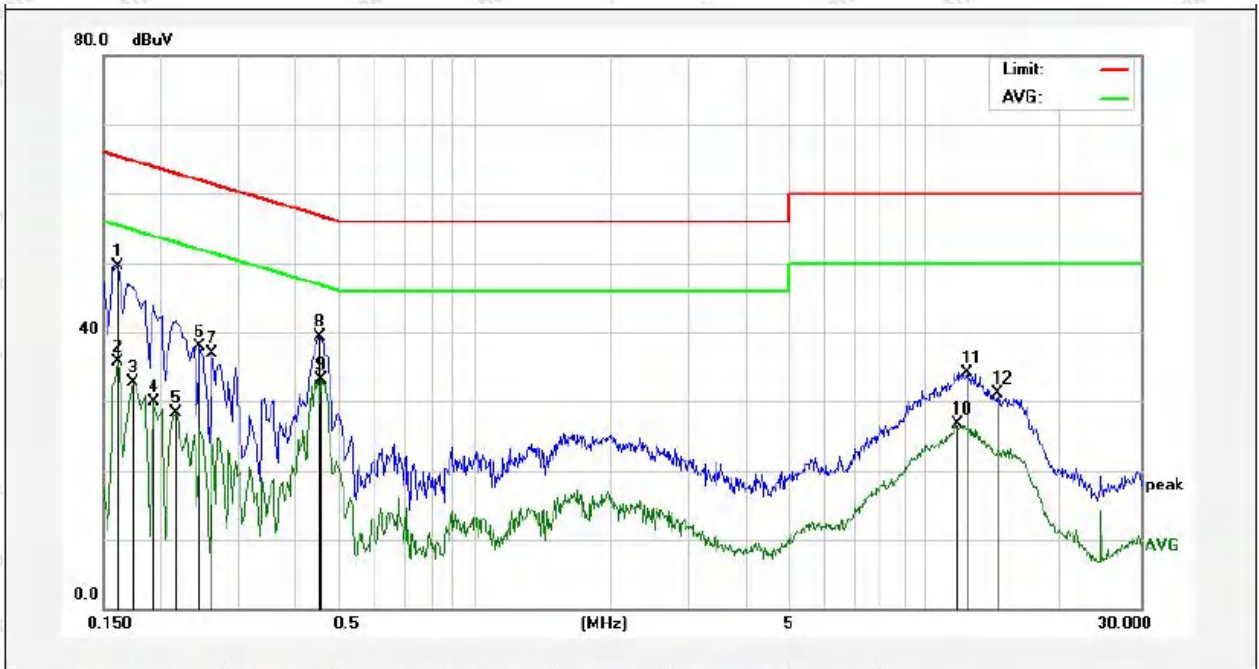
AC conducted emission pre-test at both at AC 120V/60Hz and AC 240V/60Hz modes, recorded worst case AC 120V/60Hz.

Please to see the following pages.



Conducted Emission Test Data

Test Site: 1# Shielded Room
 Operating Condition: BLE_1M High CH (2480MHz)
 Test Specification: AC 120V, 60Hz for adapter
 Comment: Live Line
 Temp.(°C)/Hum.(%RH): 22.8°C /48%RH

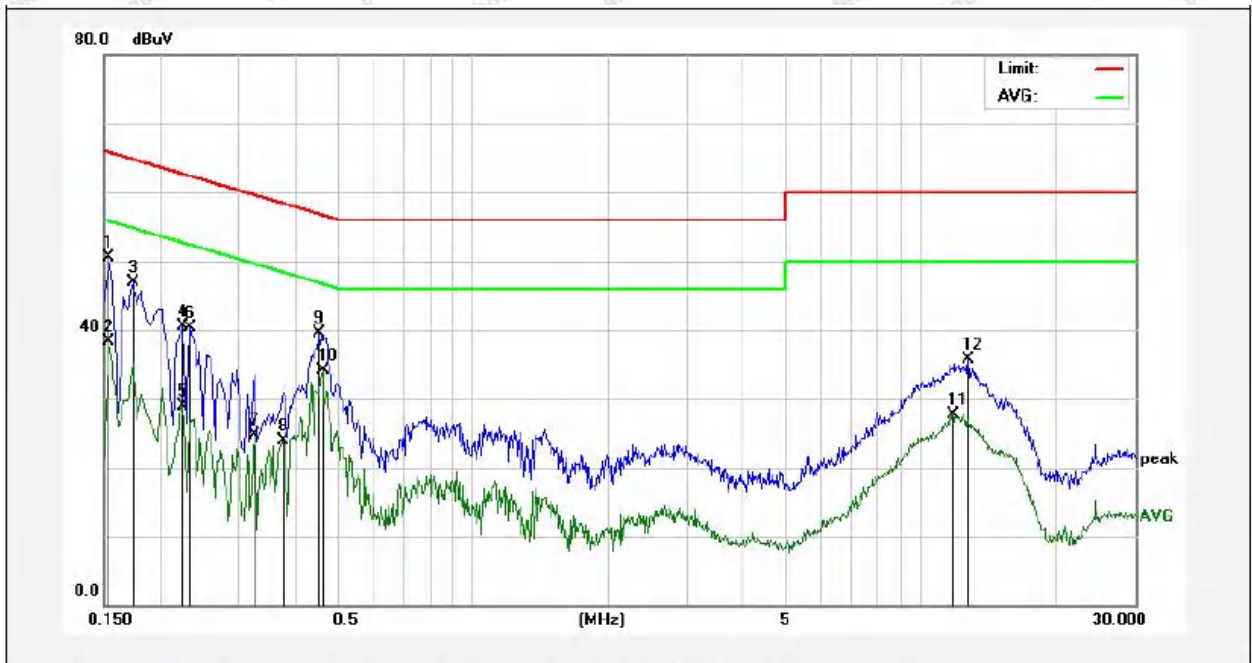


No.	Freq. (MHz)	Reading (dBUV)	Factor (dB)	Result (dBUV)	Limit (dBUV)	Over Limit (dB)	Detector	Remark
1	0.1620	39.83	9.70	49.53	65.36	-15.83	QP	
2	0.1620	26.08	9.70	35.78	55.36	-19.58	AVG	
3	0.1740	22.97	9.71	32.68	54.76	-22.08	AVG	
4	0.1940	20.17	9.71	29.88	53.86	-23.98	AVG	
5	0.2180	18.69	9.71	28.40	52.89	-24.49	AVG	
6	0.2460	28.13	9.71	37.84	61.89	-24.05	QP	
7	0.2620	27.27	9.72	36.99	61.36	-24.37	QP	
8	0.4540	29.59	9.74	39.33	56.80	-17.47	QP	
9	0.4580	23.36	9.74	33.10	46.73	-13.63	AVG	
10	11.7380	16.85	9.89	26.74	50.00	-23.26	AVG	
11	12.3300	24.18	9.90	34.08	60.00	-25.92	QP	
12	14.4500	21.19	9.97	31.16	60.00	-28.84	QP	



Conducted Emission Test Data

Test Site: 1# Shielded Room
 Operating Condition: BLE_1M High CH (2480MHz)
 Test Specification: AC 120V, 60Hz for adapter
 Comment: Neutral Line
 Temp.(°C)/Hum.(%RH): 22.8°C /48%RH



No.	Freq. (MHz)	Reading (dBuV)	Factor (dB)	Result (dBuV)	Limit (dBuV)	Over Limit (dB)	Detector	Remark
1	0.1539	40.73	9.70	50.43	65.78	-15.35	QP	
2	0.1539	28.52	9.70	38.22	55.78	-17.56	AVG	
3	0.1740	37.29	9.71	47.00	64.76	-17.76	QP	
4	0.2260	30.76	9.71	40.47	62.59	-22.12	QP	
5	0.2260	19.22	9.71	28.93	52.59	-23.66	AVG	
6	0.2340	30.53	9.71	40.24	62.30	-22.06	QP	
7	0.3260	14.92	9.72	24.64	49.55	-24.91	AVG	
8	0.3780	14.27	9.71	23.98	48.32	-24.34	AVG	
9	0.4540	29.76	9.74	39.50	56.80	-17.30	QP	
10	0.4620	24.28	9.74	34.02	46.66	-12.64	AVG	
11	11.7660	17.84	9.89	27.73	50.00	-22.27	AVG	
12	12.7500	25.78	9.92	35.70	60.00	-24.30	QP	



4. Radiation Spurious Emission and Band Edge

4.1. Test Standard and Limit

Test Standard	FCC Part15 C Section 15.209 and 15.205				
Test Limit	Frequency (MHz)	Field strength (microvolt/meter)	Limit (dBuV/m)	Remark	Measurement distance (m)
	0.009MHz~0.490MHz	2400/F(kHz)	-	-	300
	0.490MHz-1.705MHz	24000/F(kHz)	-	-	30
	1.705MHz-30MHz	30	-	-	30
	30MHz~88MHz	100	40.0	Quasi-peak	3
	88MHz~216MHz	150	43.5	Quasi-peak	3
	216MHz~960MHz	200	46.0	Quasi-peak	3
	960MHz~1000MHz	500	54.0	Quasi-peak	3
	Above 1000MHz	500	54.0	Average	3
-		-	74.0	Peak	3

Remark:

(1)The lower limit shall apply at the transition frequency.

(2) 15.35(b), Unless otherwise specified, the limit on peak radio frequency emissions is 20dB above the maximum permitted average emission limit applicable to the equipment under test. This peak limit applies to the total peak emission level radiated by the device.

4.2. Test Setup

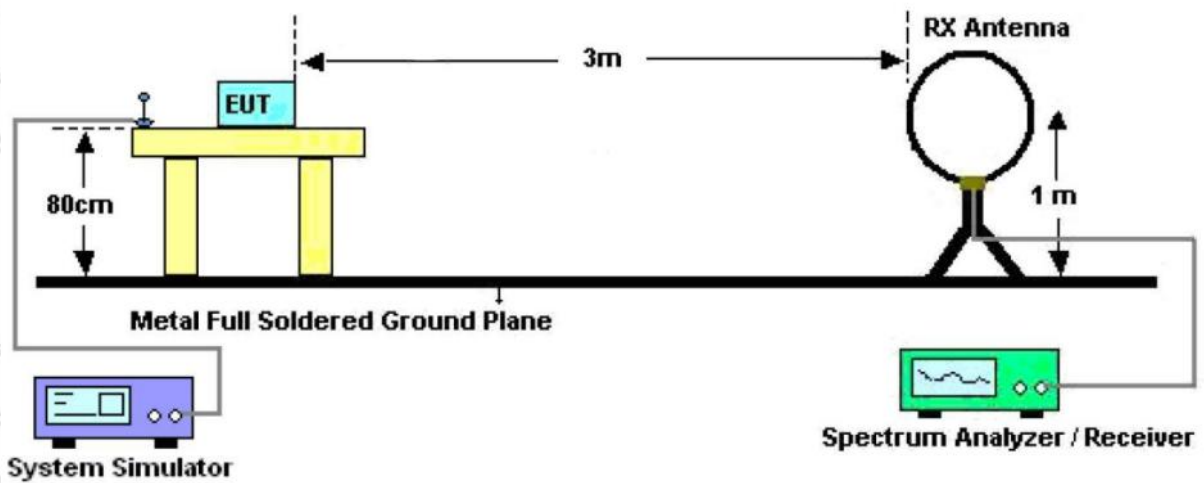


Figure 1. Below 30MHz



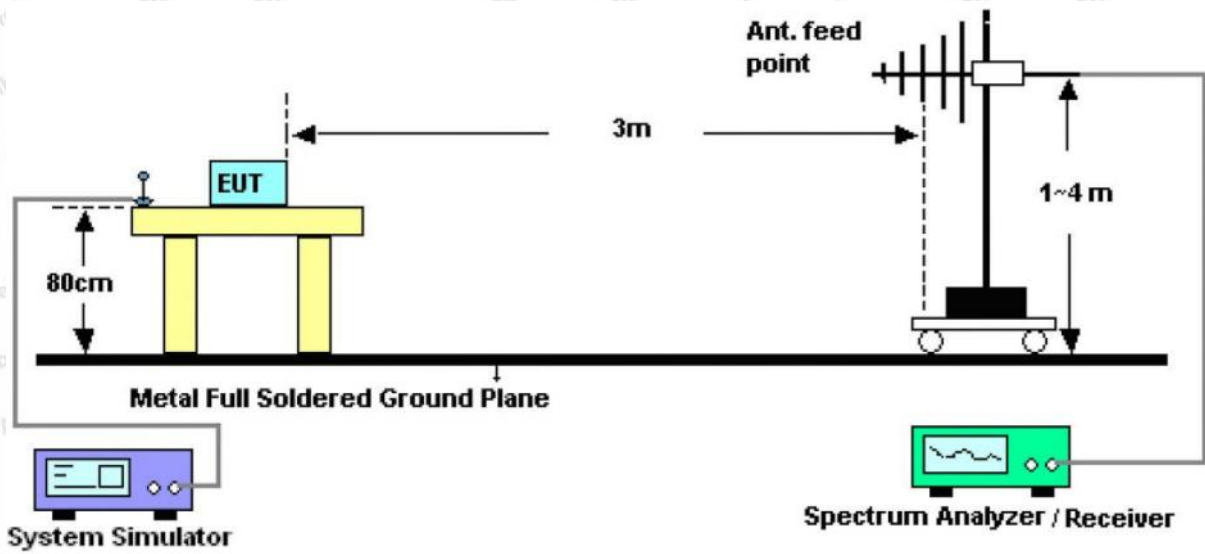


Figure 2. 30MHz to 1GHz

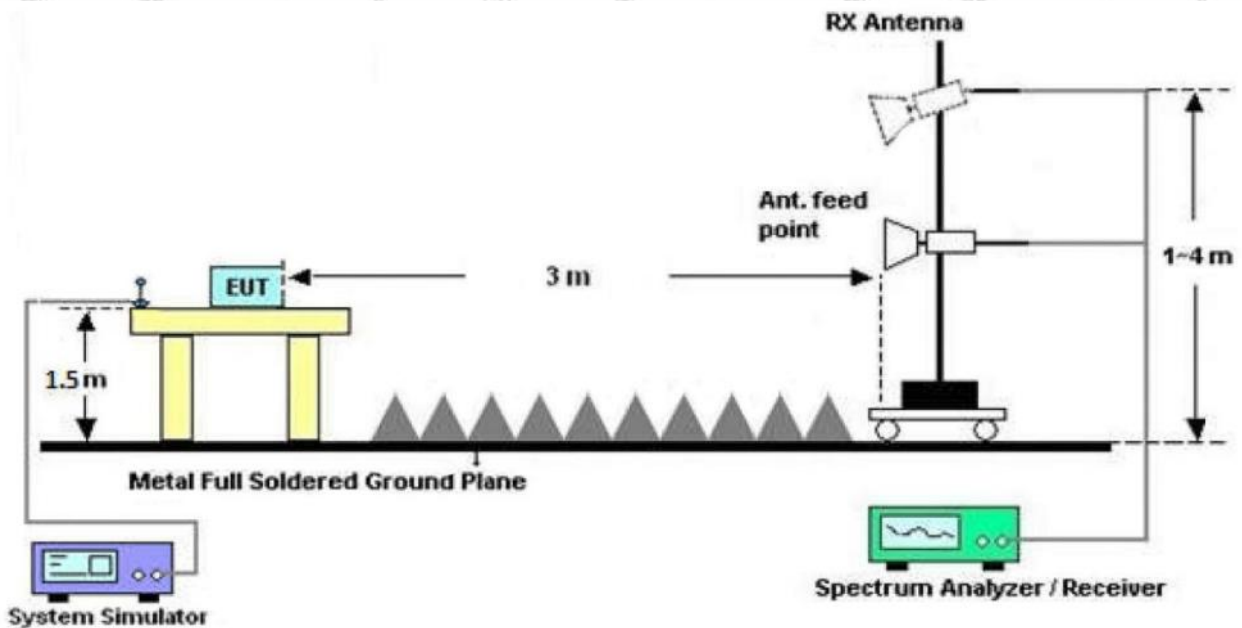


Figure 3. Above 1 GHz

4.3. Test Procedure

For below 1GHz: The EUT is placed on a turntable, which is 0.8m above the ground plane.

For above 1GHz: The EUT is placed on a turntable, which is 1.5m above the ground plane.

The turn table can rotate 360 degrees to determine the position of the maximum emission level. The EUT is set 3 meters away from the receiving antenna which is mounted on a antenna tower. The antenna can be moved up and down from 1 to 4 meters to find out the maximum emission level. Rotated the EUT through three orthogonal axes to determine the maximum emissions, both horizontal and vertical polarization of the antenna are set on test. The EUT is tested in 9*6*6 Chamber. The device is evaluated in xyz orientation.



For the radiated emission test above 1GHz:

Place the measurement antenna away from each area of the EUT determined to be a source of emissions at the specified measurement distance, while keeping the measurement antenna aimed at the source of emissions at each frequency of significant emissions, with polarization oriented for maximum response. The measurement antenna may have to be higher or lower than the EUT, depending on the radiation pattern of the emission and staying aimed at the emission source for receiving the maximum signal. The final measurement antenna elevation shall be that which maximizes the emissions. The measurement antenna elevation for maximum emissions shall be restricted to a range of heights of from 1 m to 4 m above the ground or reference ground plane.

For 9kHz to 150kHz, Set the spectrum analyzer as:

RBW = 200Hz, VBW = 1kHz, Detector= Quasi-Peak, Trace mode= Max hold, Sweep- auto couple.

For 150kHz to 30MHz, Set the spectrum analyzer as:

RBW = 9KHz, VBW = 30kHz, Detector= Quasi-Peak, Trace mode= Max hold, Sweep- auto couple.

For 30MHz to 1000MHz, Set the spectrum analyzer as:

RBW = 100kHz, VBW = 300kHz, Detector= Quasi-Peak, Trace mode= Max hold, Sweep- auto couple.

For above 1GHz, Set the spectrum analyzer as:

RBW = 1MHz, VBW = 1MHz, Detector= Peak, Trace mode= Max hold, Sweep- auto couple.

For average measurement:

–VBW=10Hz, When duty cycle is no less than 98 percent

–VBW \geq 1/T, when duty cycle is less than 98 percent where T is the minimum transmission duration over which the transmitter is on and is transmitting at its maximum power control level for the tested mode of operation, so refer to this clause 5.4 duty cycle.

4.4. Test Data

PASS

During the test, Pre-scan all kind of the place mode (X-axis, Y-axis, Z-axis), and found the X-axis is the worst case.

The test results of 9kHz-30MHz was attenuated more than 20dB below the permissible limits, so the results don't record in the report.

During the test, pre-scan all modes, only the worst case is recorded in the report.



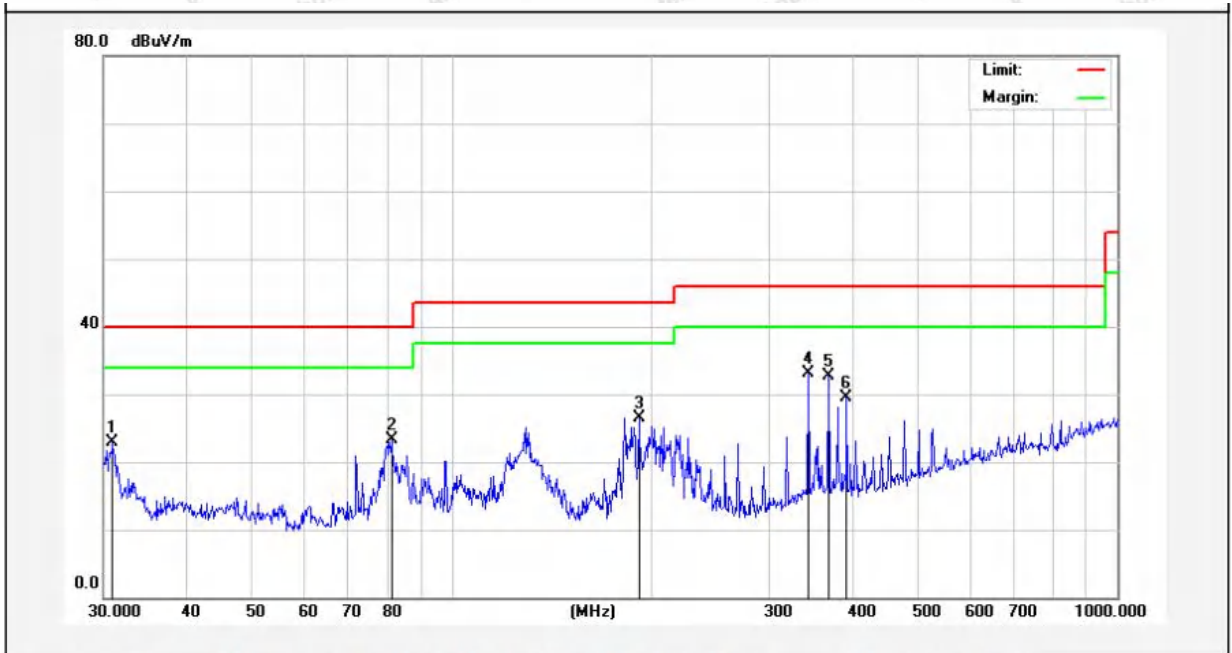
Test Results (30~1000MHz)

Test Mode: BLE_1M High CH (2480MHz)

Power Source: DC 10.8V battery inside

Polarization: Horizontal

Temp.(°C)/Hum.(%RH): 24.2°C /50%RH

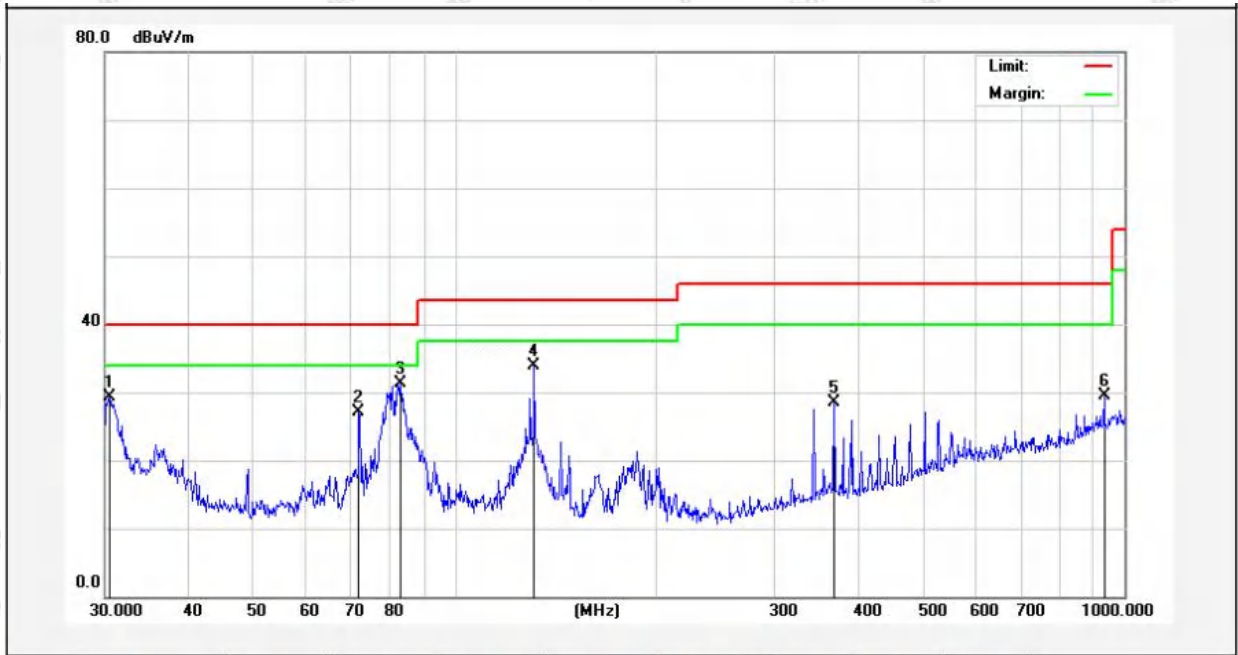


No.	Freq. (MHz)	Reading (dBuV)	Factor (dB/m)	Result (dBuV/m)	Limit (dBuV/m)	Over Limit (dB)	Detector	Height (cm)	degree (deg)	Remark
1	30.9619	42.72	-19.91	22.81	40.00	-17.19	QP			
2	81.2117	46.34	-23.02	23.32	40.00	-16.68	QP			
3	191.0738	49.27	-22.71	26.56	43.50	-16.94	QP			
4	343.1800	49.35	-16.15	33.20	46.00	-12.80	QP			
5	368.1116	48.79	-16.04	32.75	46.00	-13.25	QP			
6	392.0951	45.61	-16.12	29.49	46.00	-16.51	QP			



Test Results (30~1000MHz)

Test Mode: BLE_1M High CH (2480MHz)
 Power Source: DC 10.8V battery inside
 Polarization: Vertical
 Temp.(°C)/Hum.(%RH): 24.2°C /50%RH



No.	Freq. (MHz)	Reading (dBuV)	Factor (dB/m)	Result (dBuV/m)	Limit (dBuV/m)	Over Limit (dB)	Detector	Height (cm)	degree (deg)	Remark
1	30.5306	47.15	-17.87	29.28	40.00	-10.72	QP			
2	71.8320	47.11	-19.94	27.17	40.00	-12.83	QP			
3	82.9385	50.16	-18.86	31.30	40.00	-8.70	QP			
4	131.2965	55.49	-21.56	33.93	43.50	-9.57	QP			
5	368.1116	43.35	-14.79	28.56	46.00	-17.44	QP			
6	932.2715	35.40	-5.85	29.55	46.00	-16.45	QP			



Test Results (1GHz-25GHz)

Test Mode: CH00				Test channel: Lowest		
Peak value:						
Frequency (MHz)	Reading (dBuV)	Factor (dB/m)	Result (dBuV/m)	Limit Line (dBuV/m)	Over Limit (dB)	polarization
4804.00	29.58	15.27	44.85	74.00	-29.15	Vertical
7206.00	30.33	18.09	48.42	74.00	-25.58	Vertical
9608.00	31.98	23.76	55.74	74.00	-18.26	Vertical
12010.00	*			74.00		Vertical
14412.00	*			74.00		Vertical
4804.00	29.75	15.27	45.02	74.00	-28.98	Horizontal
7206.00	31.40	18.09	49.49	74.00	-24.51	Horizontal
9608.00	29.27	23.76	53.03	74.00	-20.97	Horizontal
12010.00	*			74.00		Horizontal
14412.00	*			74.00		Horizontal
Average value:						
Frequency (MHz)	Reading (dBuV)	Factor (dB/m)	Result (dBuV/m)	Limit (dBuV/m)	Over Limit (dB)	polarization
4804.00	18.96	15.27	34.23	54.00	-19.77	Vertical
7206.00	19.36	18.09	37.45	54.00	-16.55	Vertical
9608.00	21.00	23.76	44.76	54.00	-9.24	Vertical
12010.00	*			54.00		Vertical
14412.00	*			54.00		Vertical
4804.00	18.10	15.27	33.37	54.00	-20.63	Horizontal
7206.00	20.46	18.09	38.55	54.00	-15.45	Horizontal
9608.00	18.58	23.76	42.34	54.00	-11.66	Horizontal
12010.00	*			54.00		Horizontal
14412.00	*			54.00		Horizontal



Test Results (1GHz-25GHz)

Test Mode: CH19				Test channel: Middle		
Peak value:						
Frequency (MHz)	Reading (dBuV)	Factor (dB/m)	Result (dBuV/m)	Limit Line (dBuV/m)	Over Limit (dB)	polarization
4880.00	29.60	15.42	45.02	74.00	-28.98	Vertical
7320.00	30.18	18.02	48.20	74.00	-25.80	Vertical
9760.00	30.99	23.80	54.79	74.00	-19.21	Vertical
12200.00	*			74.00		Vertical
14640.00	*			74.00		Vertical
4880.00	29.45	15.42	44.87	74.00	-29.13	Horizontal
7320.00	31.39	18.02	49.41	74.00	-24.59	Horizontal
9760.00	28.97	23.80	52.77	74.00	-21.23	Horizontal
12200.00	*			74.00		Horizontal
14640.00	*			74.00		Horizontal
Average value:						
Frequency (MHz)	Reading (dBuV)	Factor (dB/m)	Result (dBuV/m)	Limit (dBuV/m)	Over Limit (dB)	polarization
4880.00	18.69	15.42	34.11	54.00	-19.89	polarization
7320.00	19.46	18.02	37.48	54.00	-16.52	Vertical
9760.00	20.86	23.80	44.66	54.00	-9.34	Vertical
12200.00	*			54.00		Vertical
14640.00	*			54.00		Vertical
4880.00	18.01	15.42	33.43	54.00	-20.57	Vertical
7320.00	20.02	18.02	38.04	54.00	-15.96	Horizontal
9760.00	19.09	23.80	42.89	54.00	-11.11	Horizontal
12200.00	*			54.00		Horizontal
14640.00	*			54.00		Horizontal



Test Results (1GHz-25GHz)

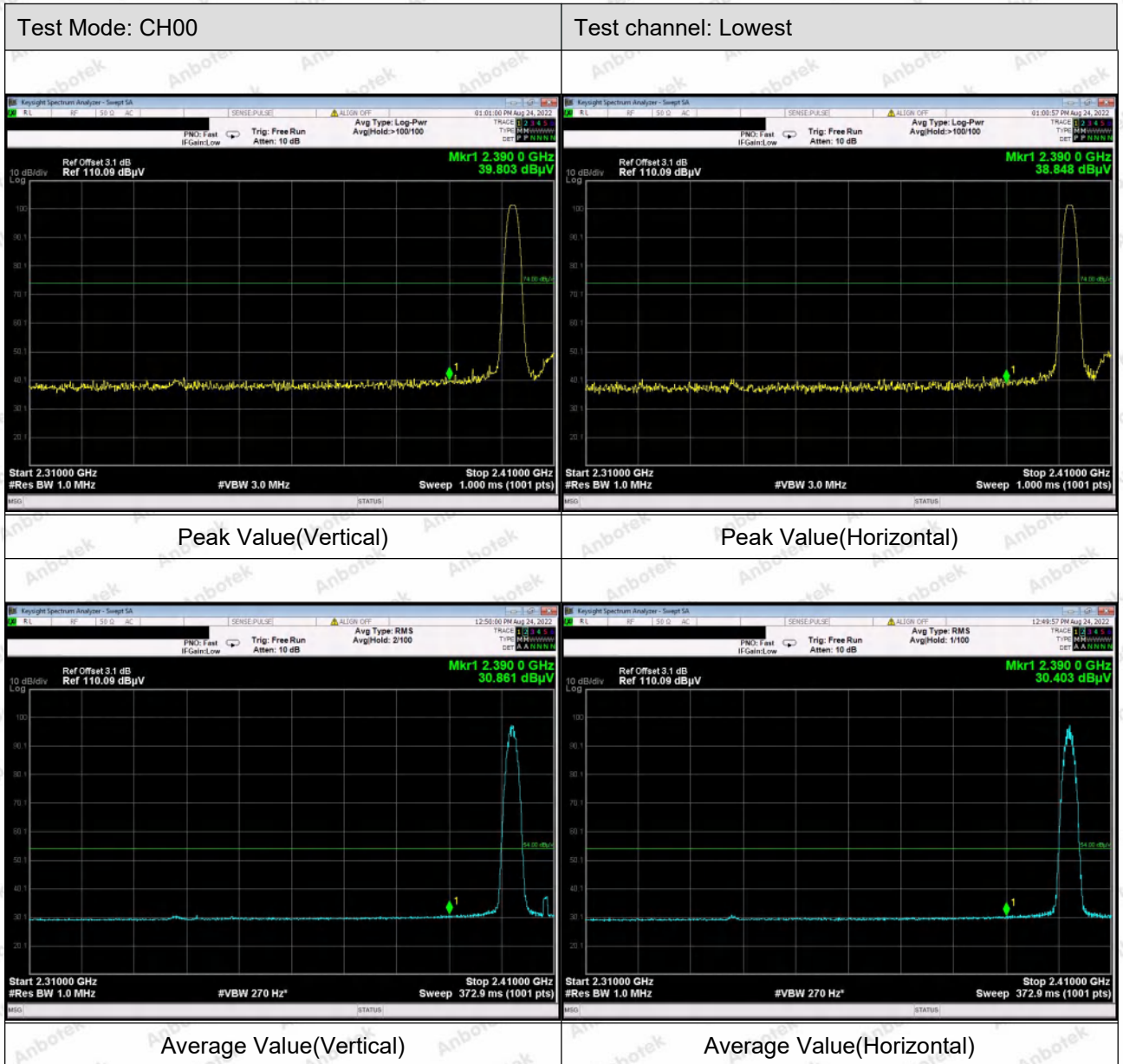
Test Mode: CH39				Test channel: Highest		
Peak value:						
Frequency (MHz)	Reading (dBuV)	Factor (dB/m)	Result (dBuV/m)	Limit Line (dBuV/m)	Over Limit (dB)	polarization
4960.00	29.87	15.58	45.45	74.00	-28.55	Vertical
7440.00	30.19	17.93	48.12	74.00	-25.88	Vertical
9920.00	31.54	23.83	55.37	74.00	-18.63	Vertical
12400.00	*			74.00		Vertical
14880.00	*			74.00		Vertical
4960.00	29.52	15.58	45.10	74.00	-28.90	Horizontal
7440.00	31.42	17.93	49.35	74.00	-24.65	Horizontal
9920.00	29.65	23.83	53.48	74.00	-20.52	Horizontal
12400.00	*			74.00		Horizontal
14880.00	*			74.00		Horizontal
Average value:						
Frequency (MHz)	Reading (dBuV)	Factor (dB/m)	Result (dBuV/m)	Limit (dBuV/m)	Over Limit (dB)	polarization
4960.00	19.81	15.58	35.39	54.00	-18.61	Vertical
7440.00	20.47	17.93	38.40	54.00	-15.60	Vertical
9920.00	21.41	23.83	45.24	54.00	-8.76	Vertical
12400.00	*			54.00		Vertical
14880.00	*			54.00		Vertical
4960.00	19.45	15.58	35.03	54.00	-18.97	Horizontal
7440.00	21.39	17.93	39.32	54.00	-14.68	Horizontal
9920.00	18.99	23.83	42.82	54.00	-11.18	Horizontal
12400.00	*			54.00		Horizontal
14880.00	*			54.00		Horizontal

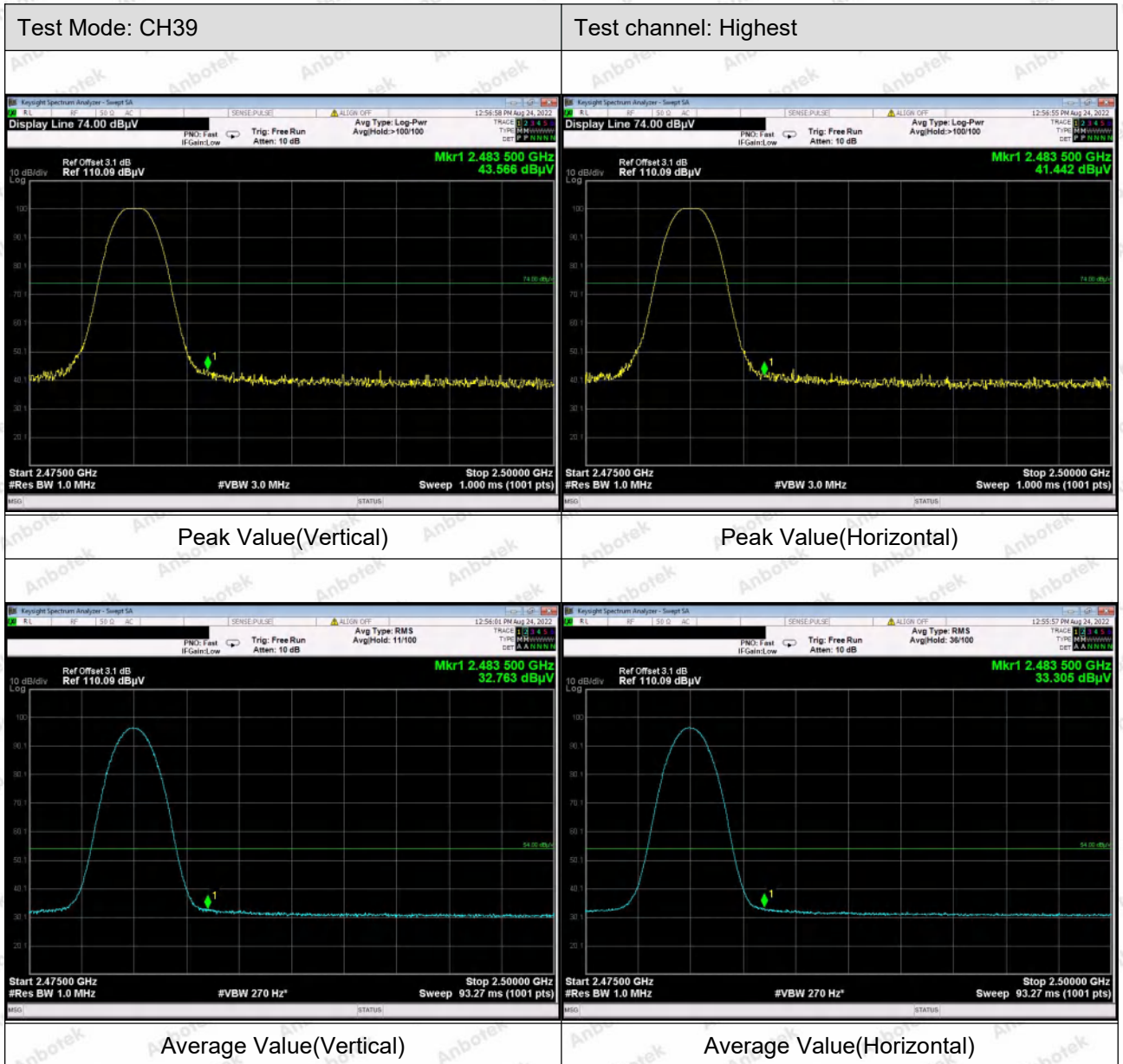
Remark:

- 1.Result =Reading + Factor
2. "*" means the test results were attenuated more than 20dB below the permissible limits, so the results don't record in the report.
3. During the test, pre-scan the BLE_1M&BLE_2M, and found the BLE_1M is worse case, the report only record this mode.



Radiated Band Edge:





Remark:

1. During the test, pre-scan the BLE_1M&BLE_2M, and found the BLE_1M is worse case, the report only record this mode.

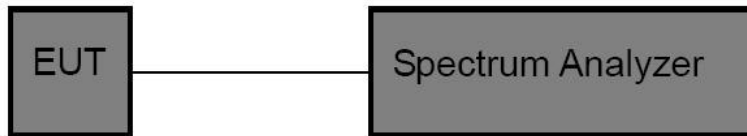


5. Maximum Peak Output Power Test

5.1. Test Standard and Limit

Test Standard	FCC Part15 C Section 15.247 (b)(3)
Test Limit	1W (30dBm)

5.2. Test Setup



5.3. Test Procedure

This procedure shall be used when the measurement instrument has available a resolution bandwidth that is greater than the DTS bandwidth.

1. Set the RBW \geq DTS bandwidth.
2. Set the VBW $\geq 3 \times$ RBW.
3. Set the span $\geq 3 \times$ RBW.
4. Detector = peak.
5. Sweep time = auto couple.
6. Trace mode = max hold.
7. Allow trace to fully stabilize.
8. Use peak marker function to determine the peak amplitude level.

5.4. Test Data

Pass

Please refer to Appendix C of the Appendix Test Data.

Additional test for duty cycle.

Please refer to Appendix G of the Appendix Test Data.

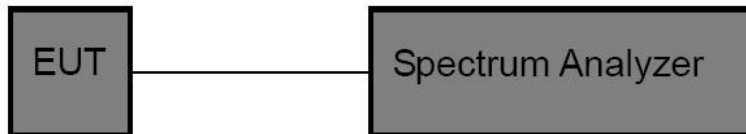


6. 6DB Occupancy Bandwidth Test

6.1. Test Standard and Limit

Test Standard	FCC Part15 C Section 15.247 (a)(2)
Test Limit	≥500kHz

6.2. Test Setup



6.3. Test Procedure

1. Place the EUT on the table and set it in the transmitting mode.
2. Remove the antenna from the EUT and then connect a low loss RF cable from the antenna port to the spectrum analyzer.
3. Set the spectrum analyzer as:
 - RBW = 100kHz, VBW≥3*RBW
 - Detector= Peak
 - Trace mode= Max hold.
 - Sweep- auto couple.
4. Mark the peak frequency and -6dB (upper and lower) frequency.
5. Repeat until all the rest channels are investigated.

6.4. Test Data

Pass

Please refer to Appendix A of the Appendix Test Data.

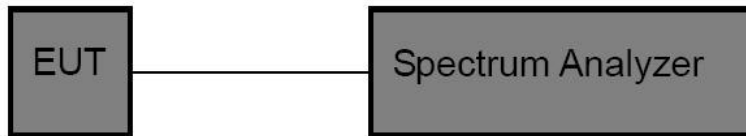


7. Power Spectral Density Test

7.1. Test Standard and Limit

Test Standard	FCC Part15 C Section 15.247 (e)
Test Limit	8dBm/3KHz

7.2. Test Setup



7.3. Test Procedure

1. Place the EUT on the table and set it in transmitting mode. Remove the antenna from the EUT and then connect a low loss RF cable from the antenna port to the spectrum analyzer.
2. Set the spectrum analyzer as RBW = 3kHz, VBW $\geq 3 \times$ RBW, Span = 1.5x DTS BW
3. Record the max. reading.
4. Repeat the above procedure until the measurements for all frequencies are completed.

7.4. Test Data

Pass

Please refer to Appendix D of the Appendix Test Data.

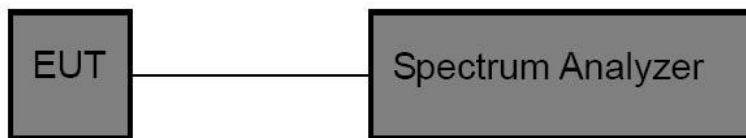


8. 100kHz Bandwidth of Frequency Band Edge Requirement

8.1. Test Standard and Limit

Test Standard	FCC Part15 C Section 15.247 (d)
Test Limit	In any 100 kHz bandwidth outside the frequency bands in which the spread spectrum intentional radiator is operating, the radio frequency power that is produced by the intentional radiator shall be at least 20dB below that in the 100kHz bandwidth within the band that contains the highest level of the desired power, In addition, radiated emissions which fall in the restricted bands, as defined in §15.205(a), must also comply with the radiated emission limits specified in 15.209(a).

8.2. Test Setup



8.3. Test Procedure

Using the following spectrum analyzer setting:

1. Set the RBW = 100KHz.
2. Set the VBW = 300KHz.
3. Sweep time = auto couple.
4. Detector function = peak.
5. Trace mode = max hold.
6. Allow trace to fully stabilize.

8.4. Test Data

Pass

Please refer to Appendix E&F of the Appendix Test Data.



9. Antenna Requirement

9.1. Test Standard and Requirement

Test Standard	FCC Part15 Section 15.203 /247(c)
Requirement	<p>1) 15.203 requirement: An intentional radiator shall be designed to ensure that no antenna other than that furnished by the responsible party shall be used with the device. The use of a permanently attached antenna or of an antenna that uses a unique coupling to the intentional radiator, the manufacturer may design the unit so that a broken antenna can be replaced by the user, but the use of a standard antenna jack or electrical connector is prohibited.</p> <p>2) 15.247(c) (1)(i) requirement: Systems operating in the 2400-2483.5 MHz band that is used exclusively for fixed. Point-to-point operations may employ transmitting antennas with directional gain greater than 6dBi provided the maximum conducted output power of the intentional radiator is reduced by 1 dB for every 3 dB that the directional gain of the antenna exceeds 6 dBi.</p>

9.2. Antenna Connected Construction

The antenna is a FPC antenna which permanently attached, and the best case gain of the antenna is 3.97dBi . It complies with the standard requirement.



APPENDIX I -- TEST SETUP PHOTOGRAPH

Photo of Conducted Emission Measurement

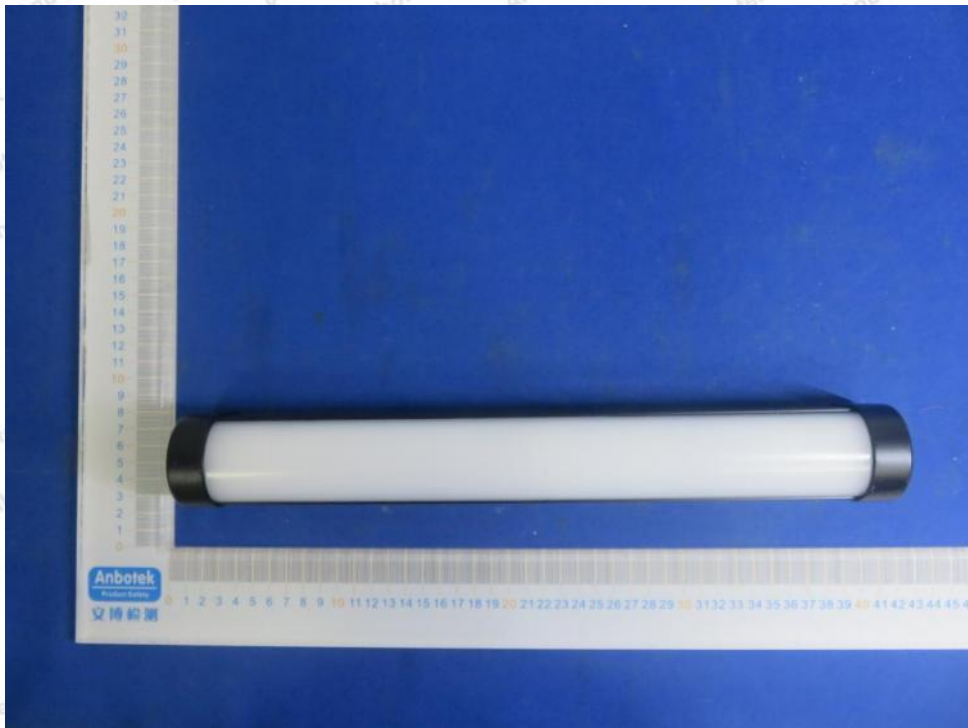


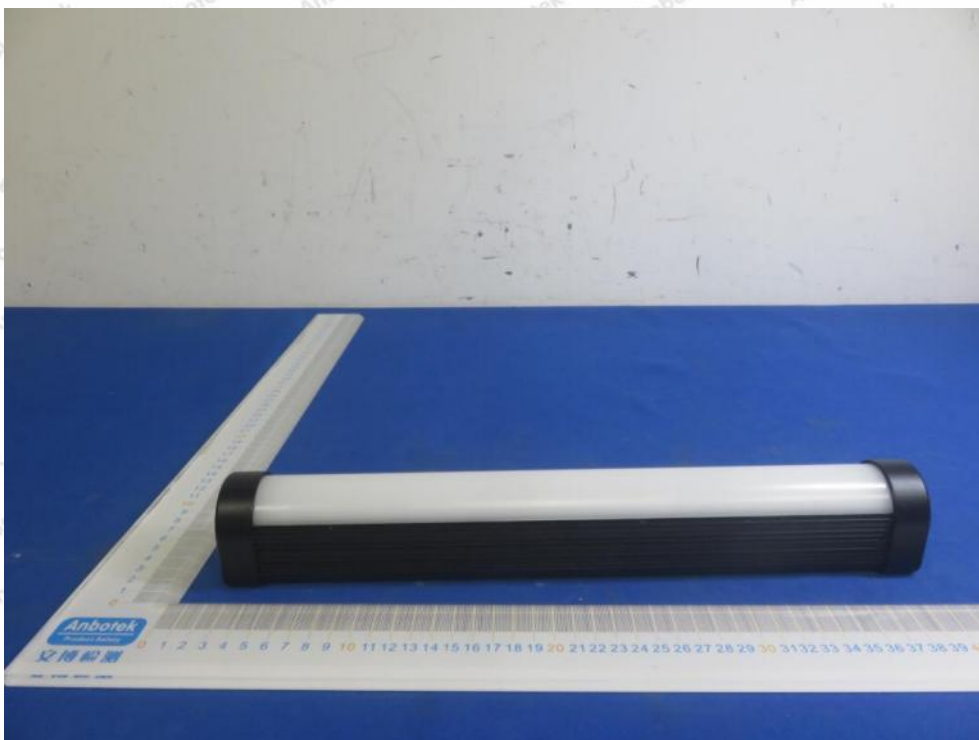
Photo of Radiation Emission Test

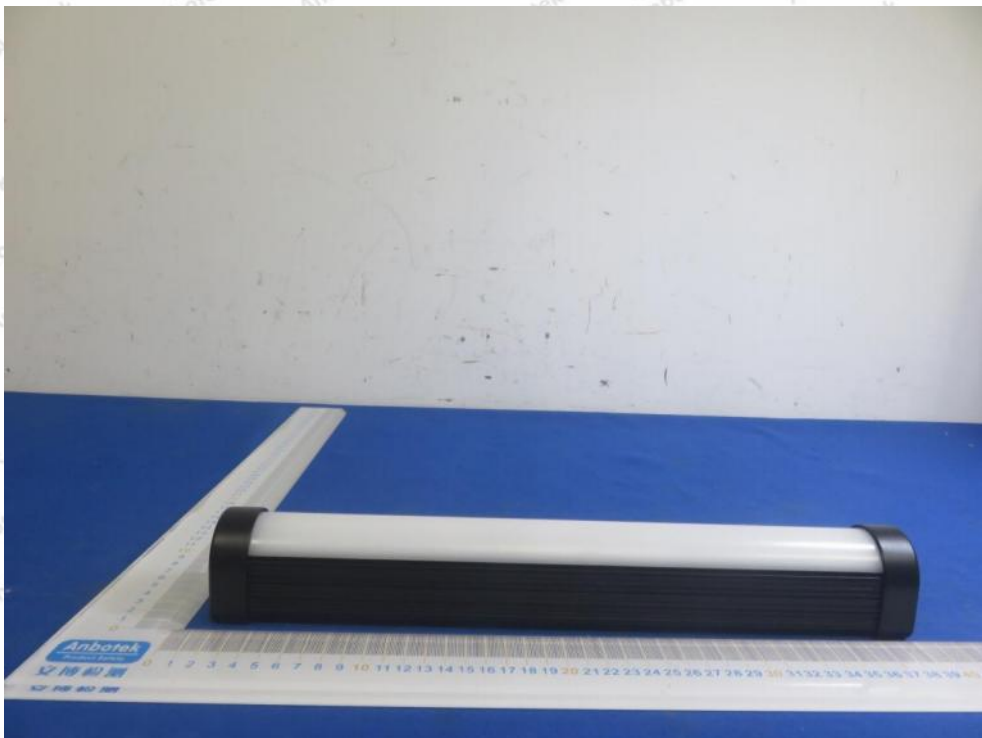
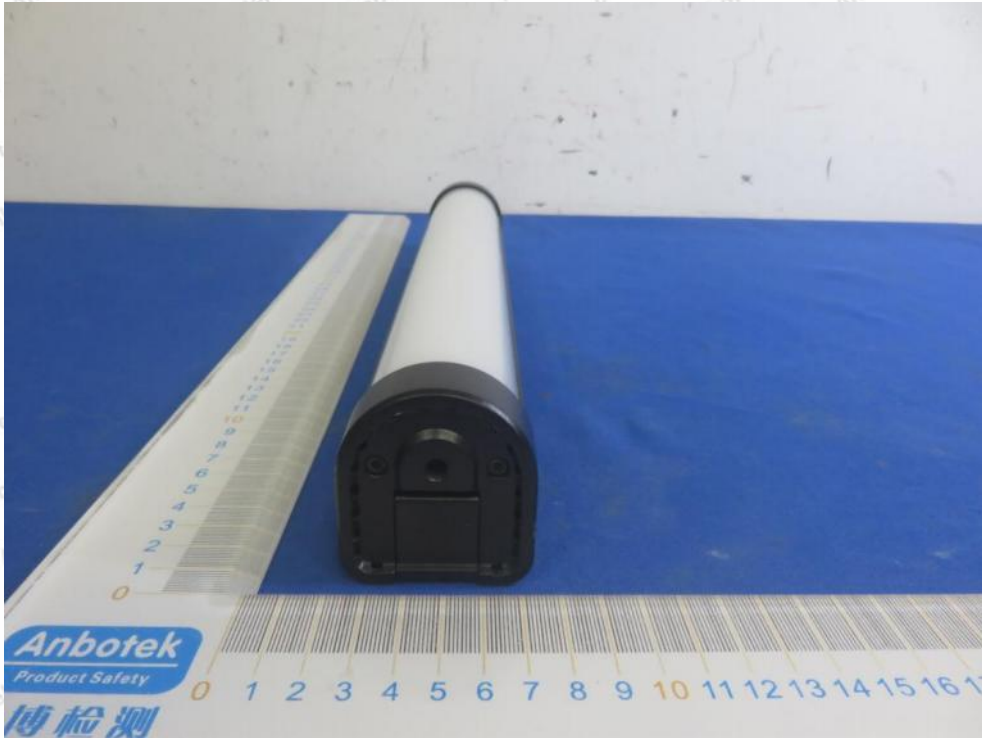


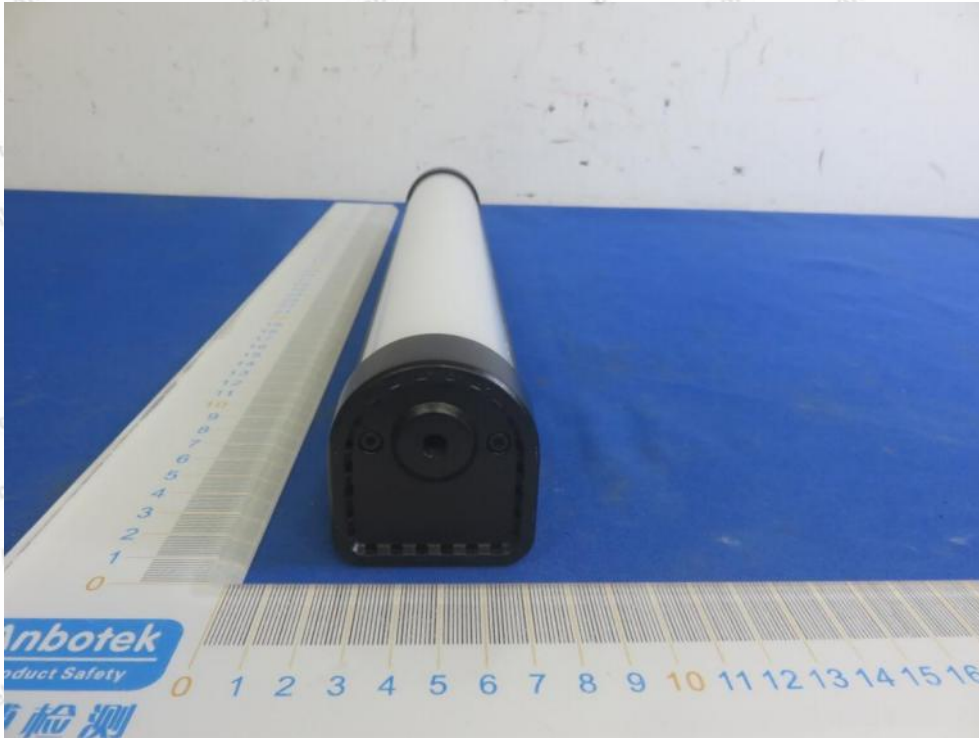


APPENDIX II -- EXTERNAL PHOTOGRAPH

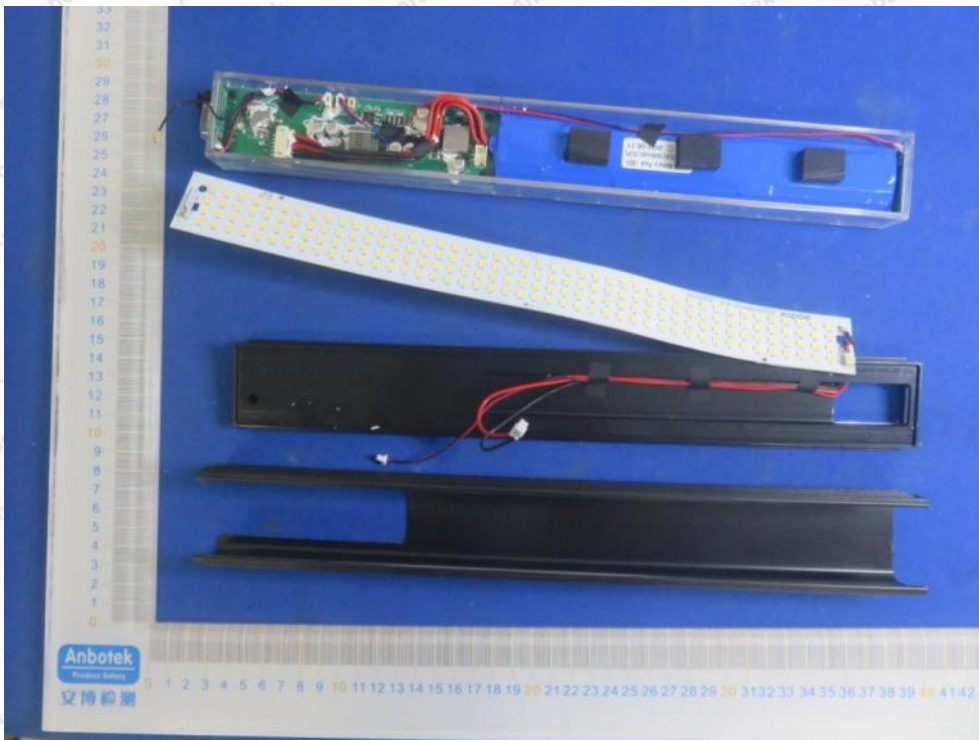
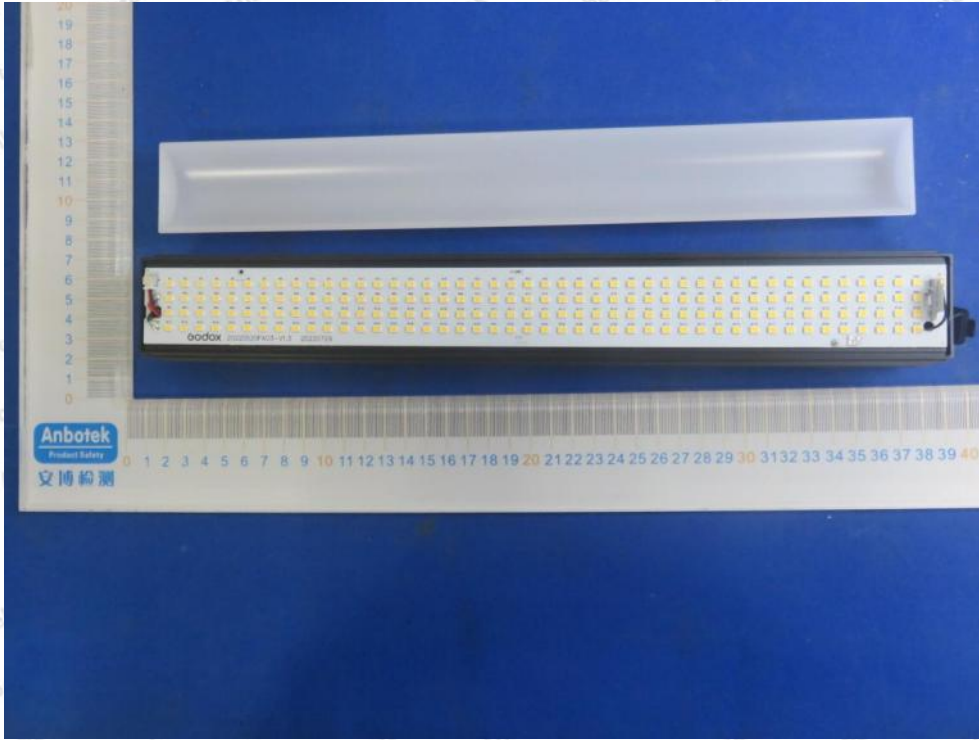


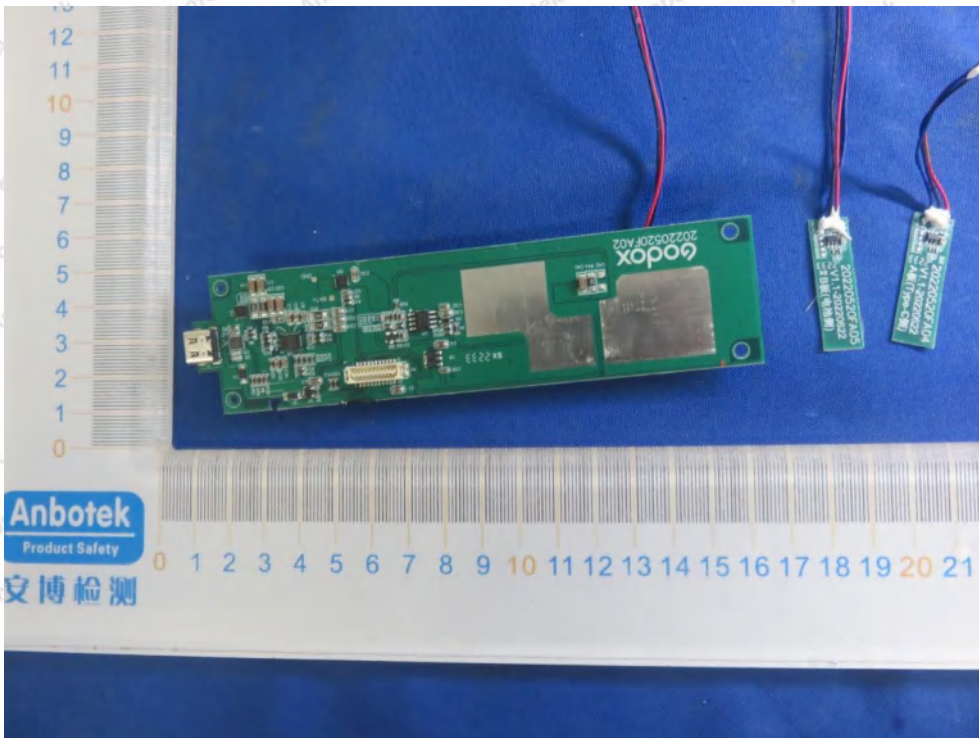


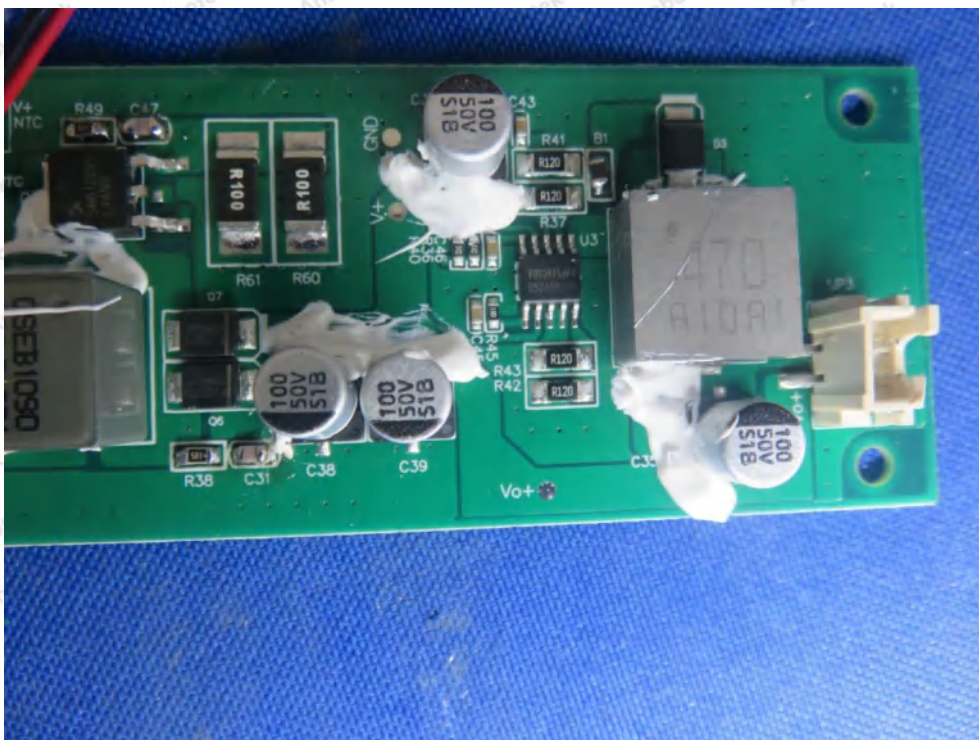
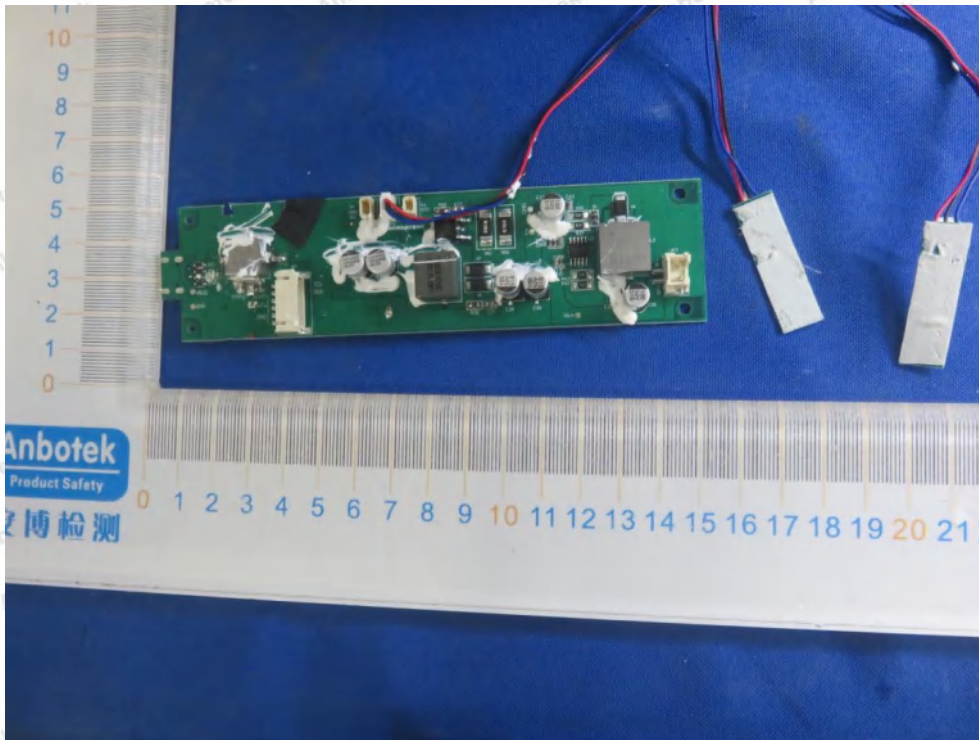


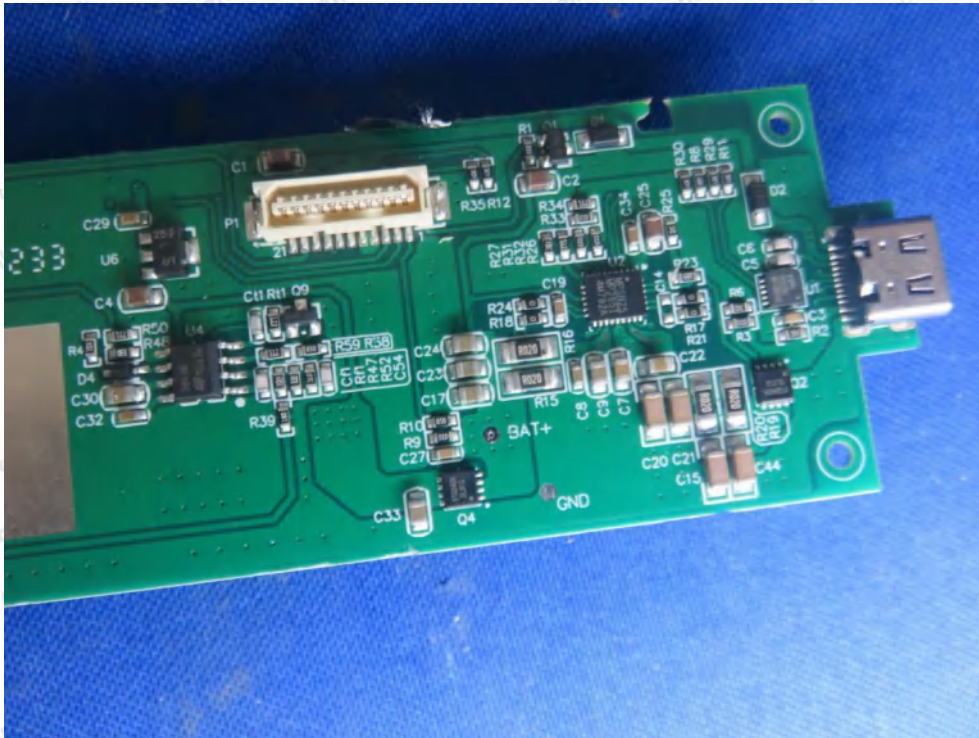


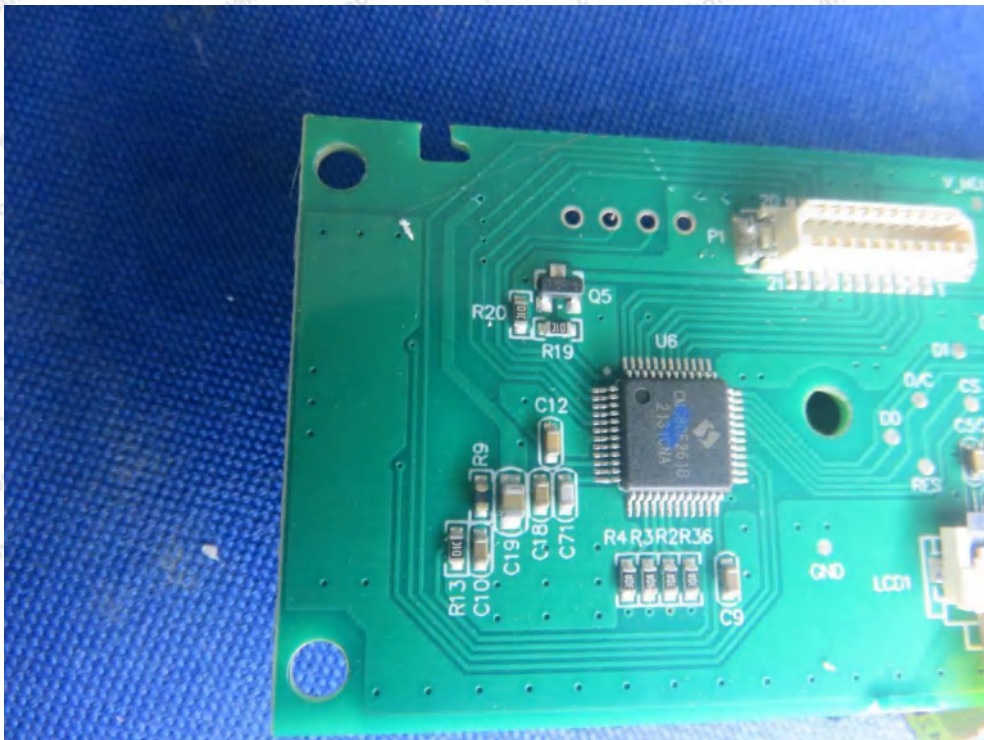
APPENDIX III -- INTERNAL PHOTOGRAPH

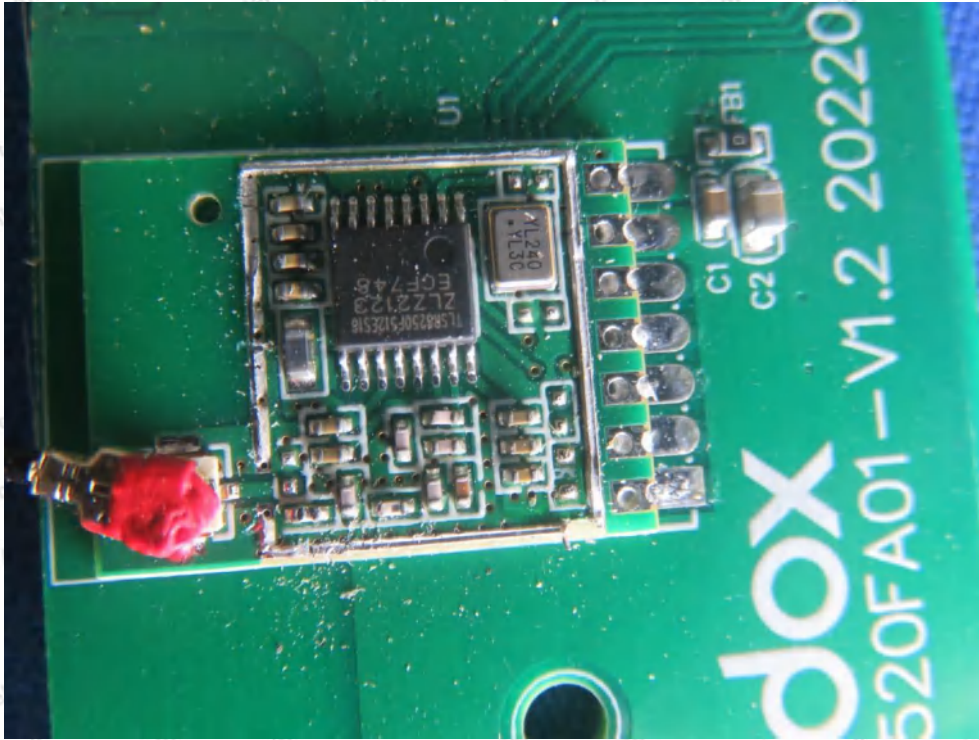












ANT



Appendix Test Data

Report No.:	18220WC20183601	Test Sample No.:	1-2-2
Start Test Date:	2022.8.11	Finish Test Date:	2022.9.2
Test Engineer:	<i>Jony He</i>	Auditor:	<i>Edward Pan</i>
Temperature:	26.3°C	Relative Humidity:	47 %
Pressure:	1012 hPa		

Appendix A: DTS Bandwidth

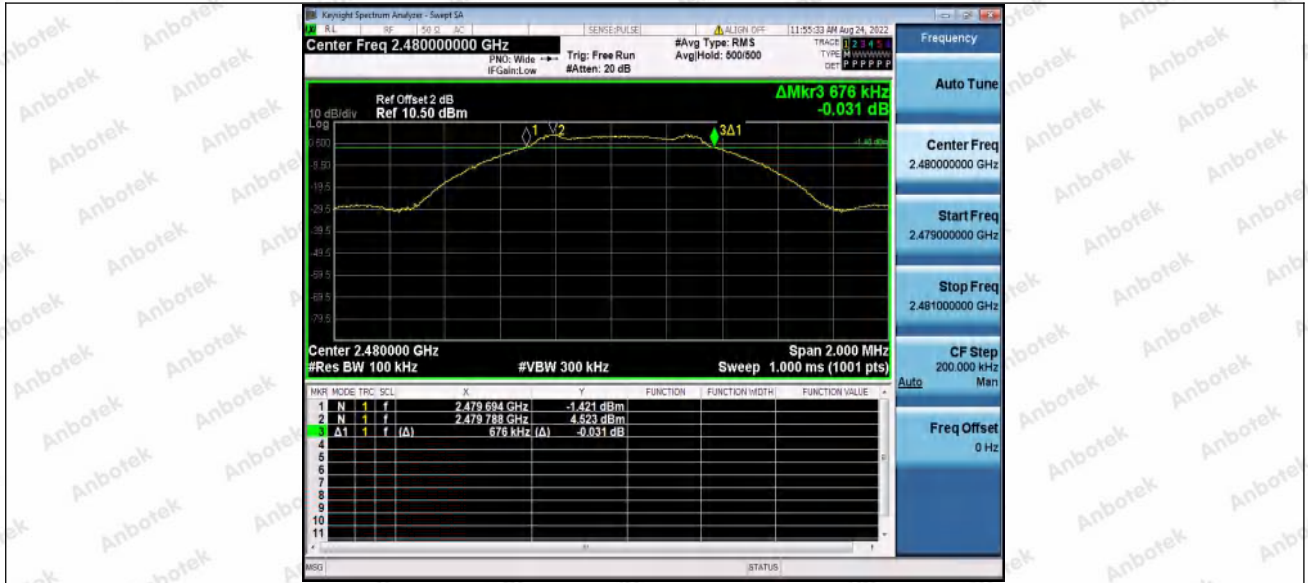
Test Result

TestMode	Antenna	Frequency[MHz]	DTS BW [MHz]	FL[MHz]	FH[MHz]	Limit[MHz]	Verdict
BLE_1M	Ant1	2402	0.662	2401.698	2402.360	≥0.5	PASS
		2440	0.676	2439.694	2440.370	≥0.5	PASS
		2480	0.676	2479.694	2480.370	≥0.5	PASS
BLE_2M	Ant1	2402	1.445	2401.275	2402.720	≥0.5	PASS
		2440	1.405	2439.360	2440.765	≥0.5	PASS
		2480	1.450	2479.290	2480.740	≥0.5	PASS

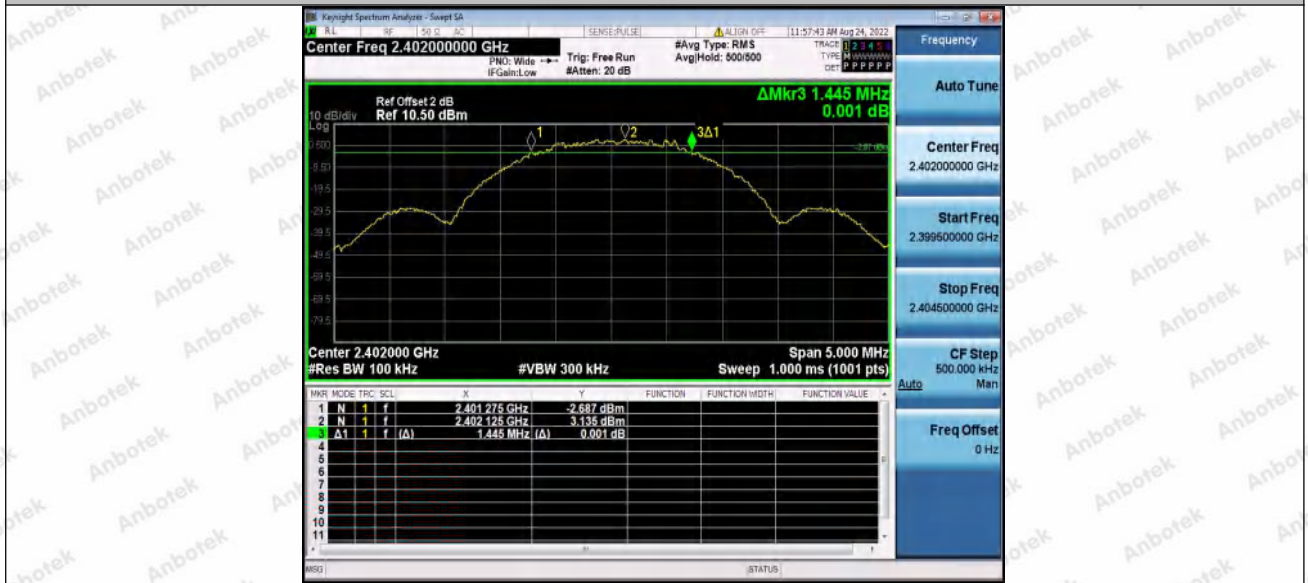


Test Graphs





BLE_2M_Ant1_2402



BLE_2M_Ant1_2440





Appendix B: Occupied Channel Bandwidth

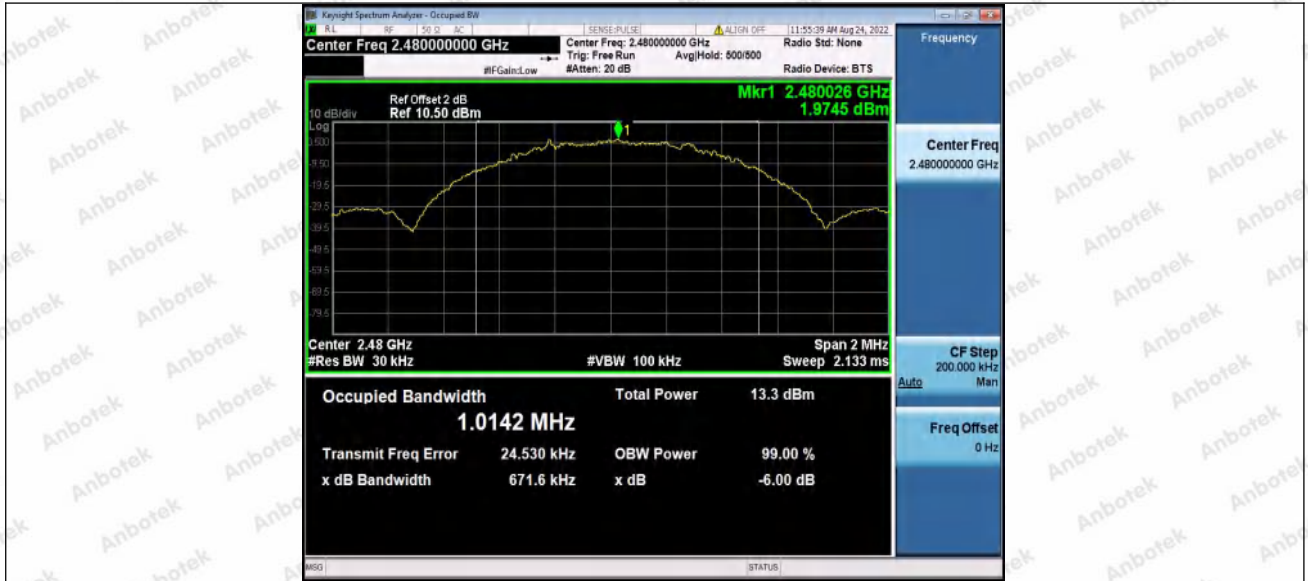
Test Result

TestMode	Antenna	Frequency[MHz]	OCB [MHz]	FL[MHz]	FH[MHz]	Limit[MHz]	Verdict
BLE_1M	Ant1	2402	1.0136	2401.5208	2402.5344	---	PASS
		2440	1.0225	2439.5211	2440.5436	---	PASS
		2480	1.0142	2479.5174	2480.5316	---	PASS
BLE_2M	Ant1	2402	2.0526	2401.0014	2403.0540	---	PASS
		2440	2.0427	2439.0101	2441.0528	---	PASS
		2480	2.0595	2479.0072	2481.0667	---	PASS

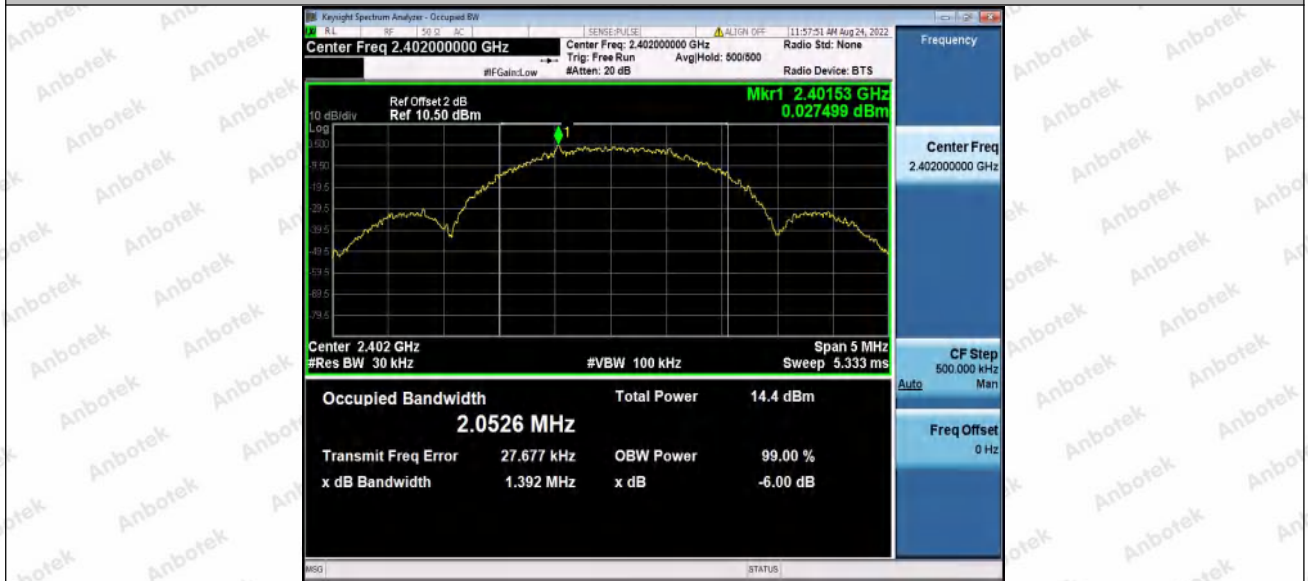


Test Graphs



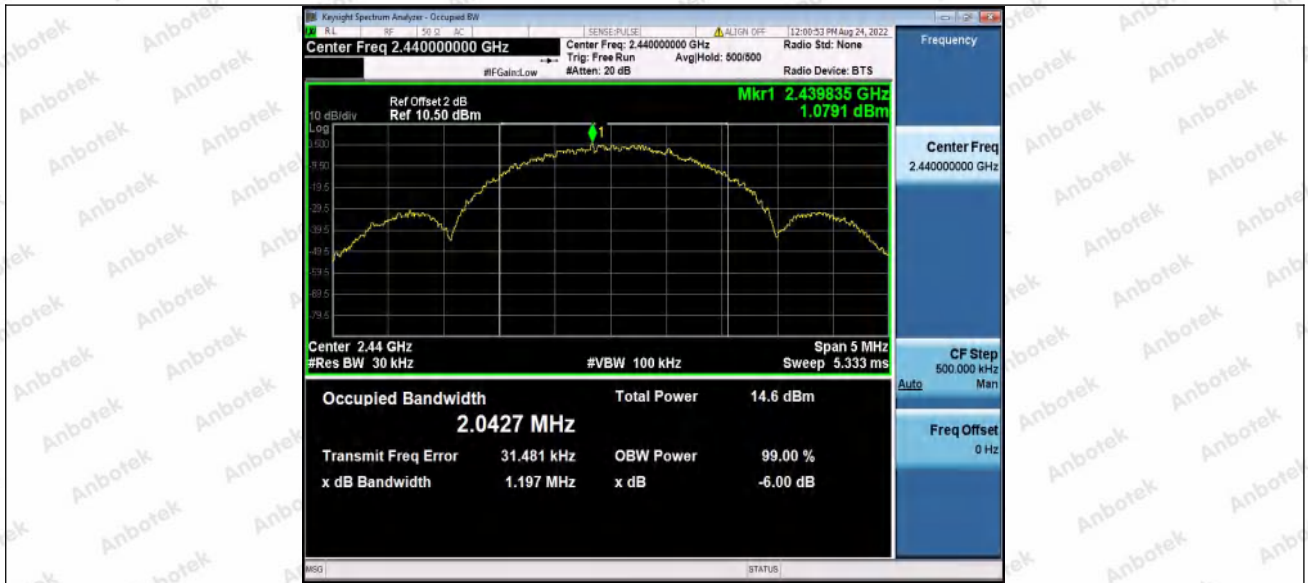


BLE_2M_Ant1_2402

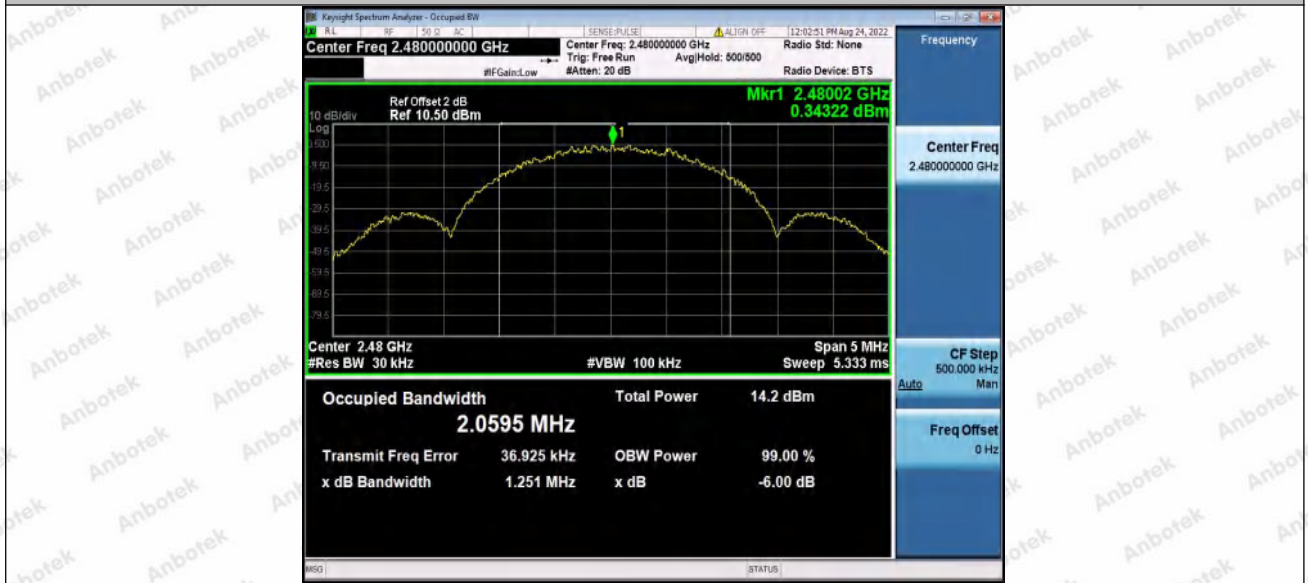


BLE_2M_Ant1_2440





BLE_2M_Ant1_2480

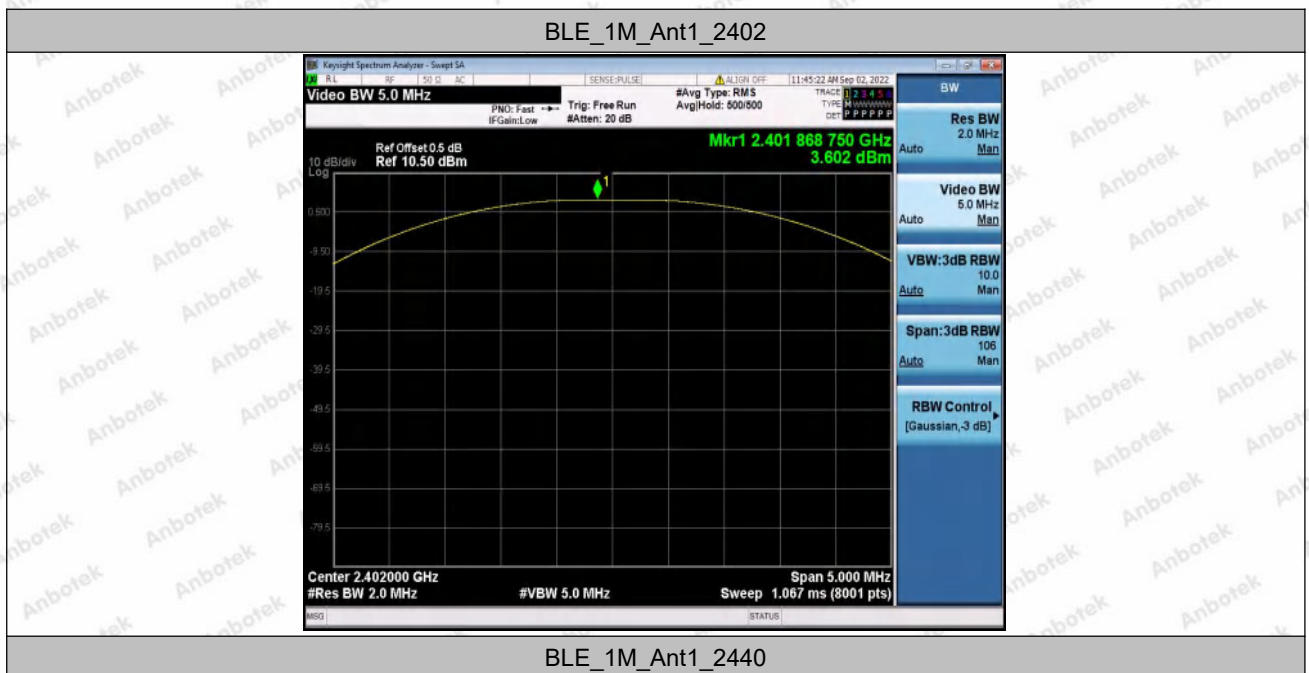


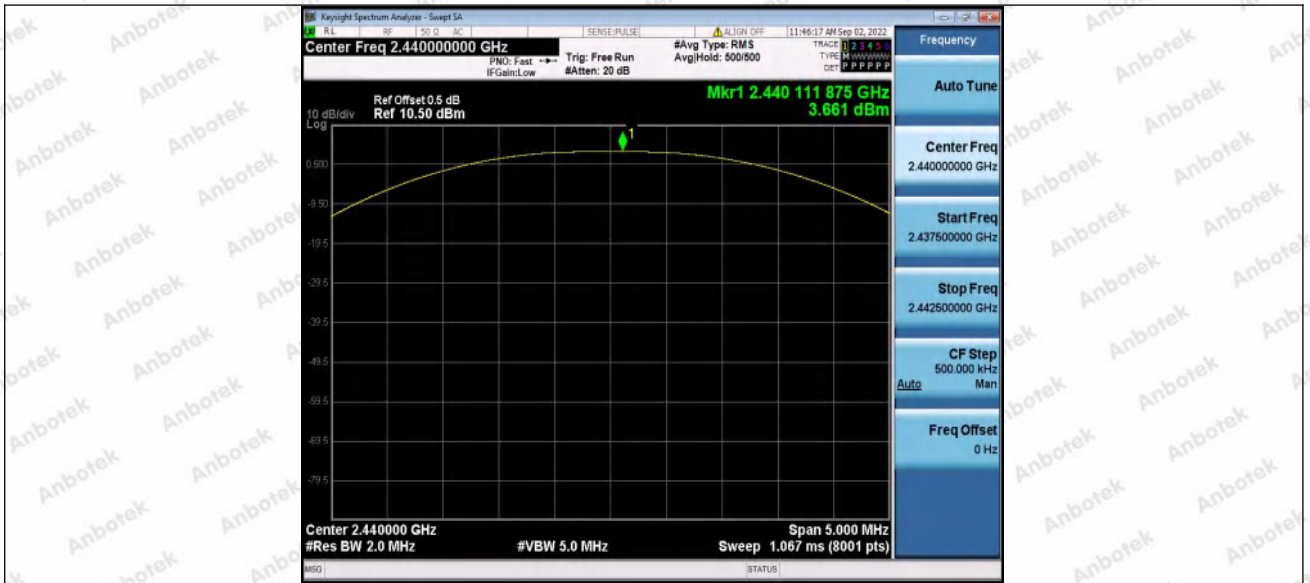
Appendix C: Maximum conducted output power

Test Result Peak

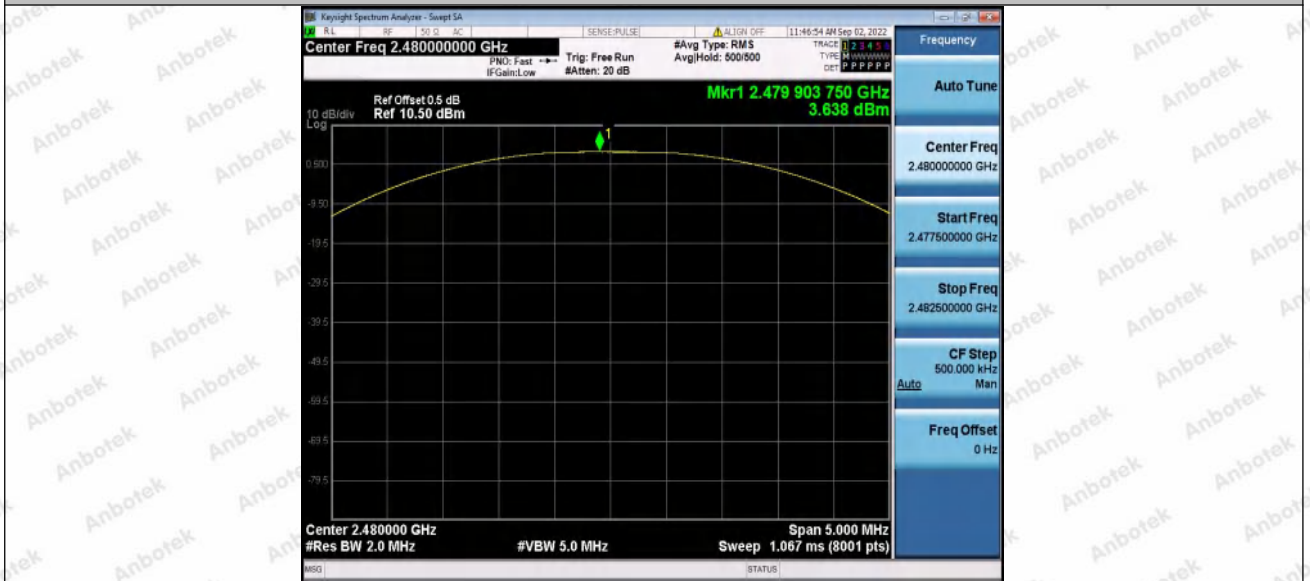
TestMode	Antenna	Frequency[MHz]	Conducted Peak Power[dBm]	Conducted Limit[dBm]	Verdict
BLE_1M	Ant1	2402	3.60	≤30	PASS
		2440	3.66	≤30	PASS
		2480	3.64	≤30	PASS
BLE_2M	Ant1	2402	3.64	≤30	PASS
		2440	3.70	≤30	PASS
		2480	3.68	≤30	PASS

Test Graphs Peak



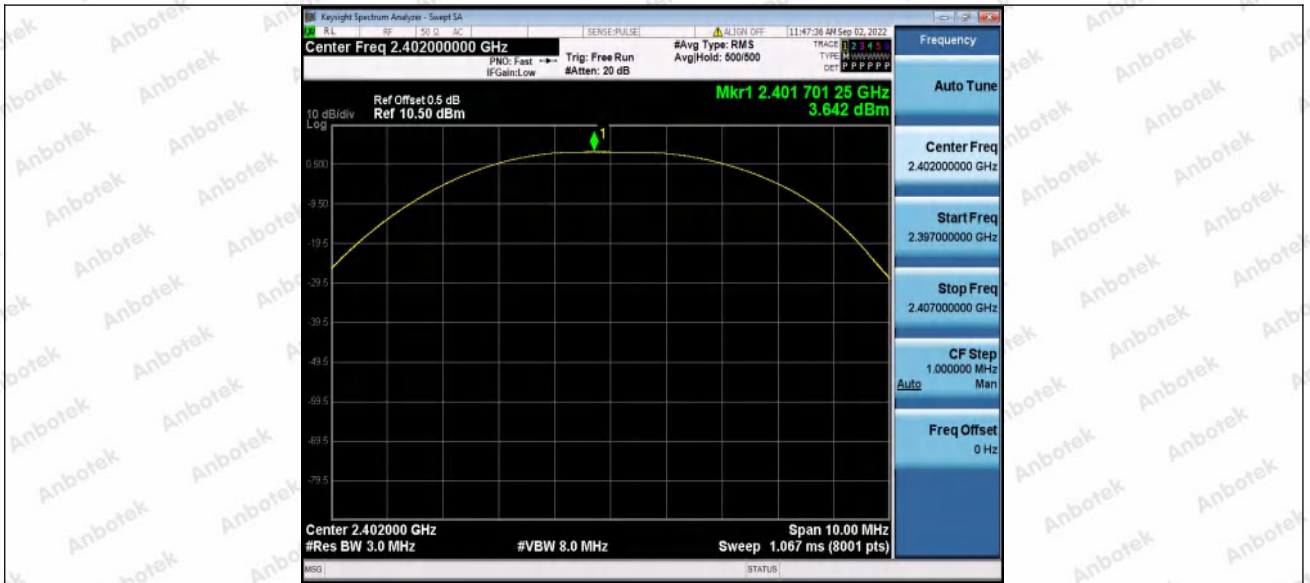


BLE_1M_Ant1_2480

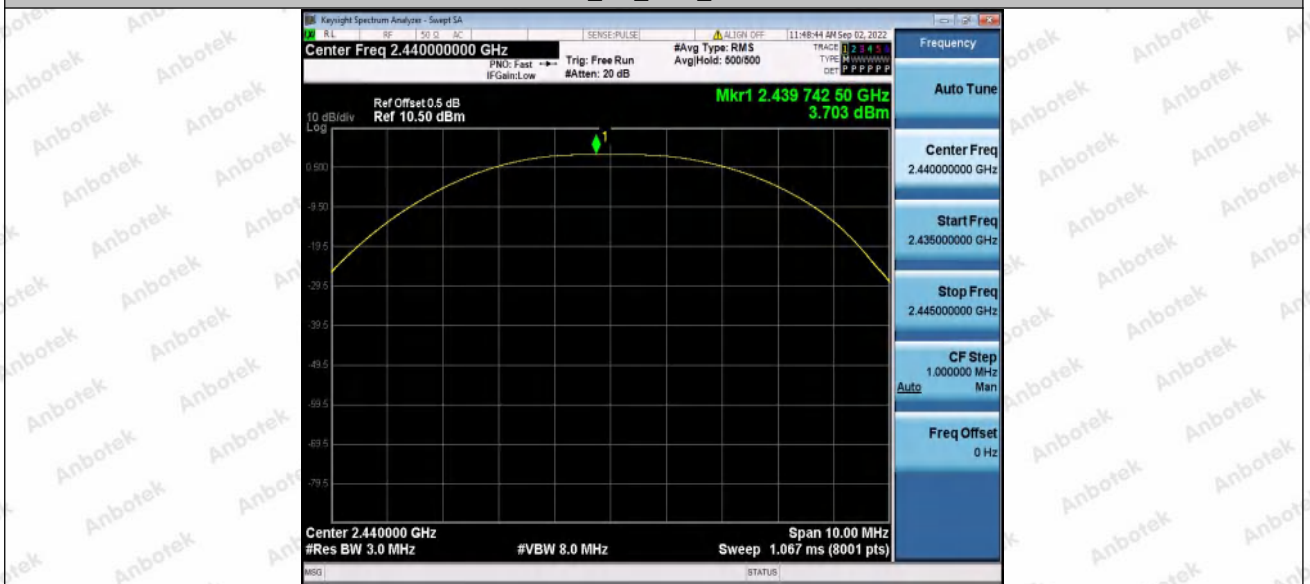


BLE_2M_Ant1_2402



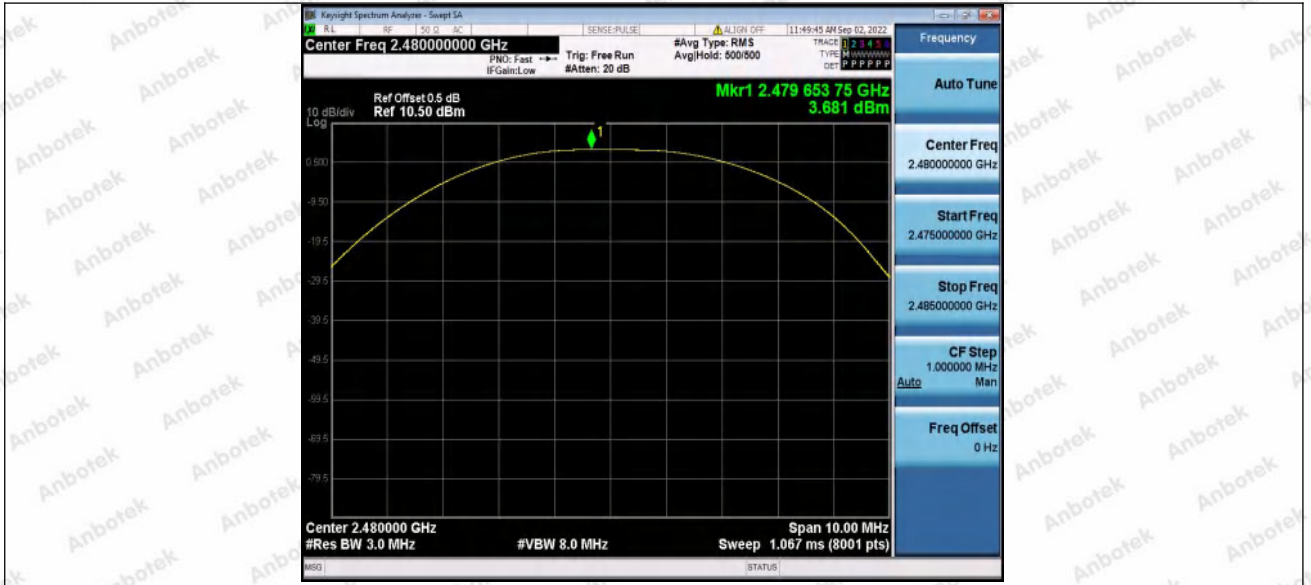


BLE_2M_Ant1_2440



BLE_2M_Ant1_2480





Appendix D: Maximum power spectral density

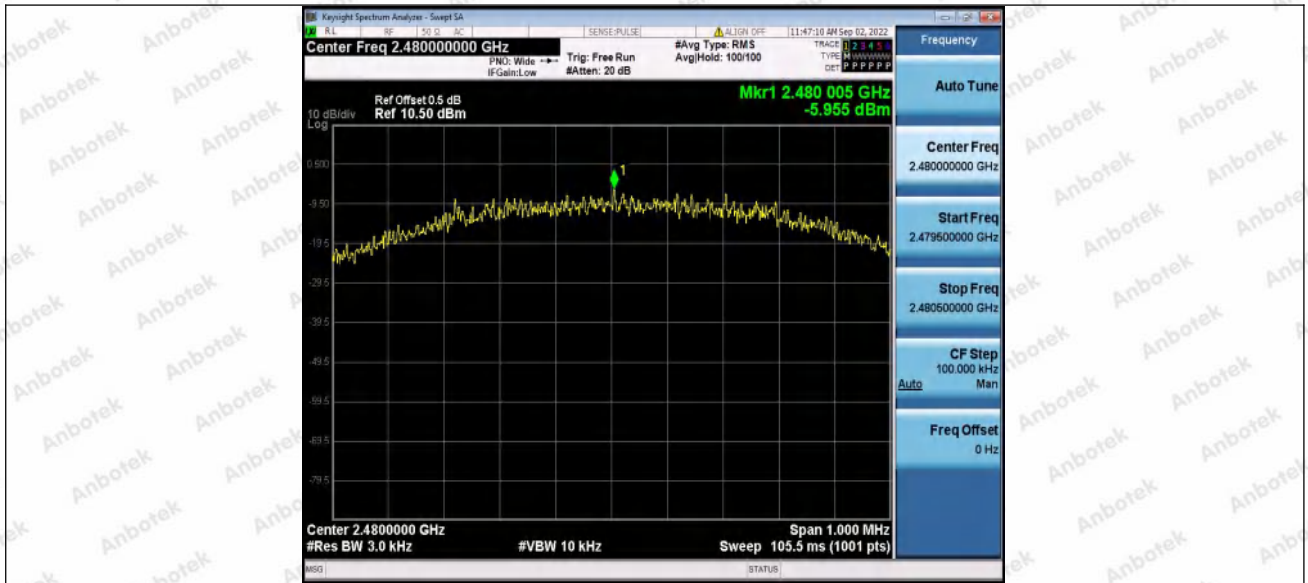
Test Result

TestMode	Antenna	Frequency[MHz]	Result[dBm/3kHz]	Limit[dBm/3kHz]	Verdict
BLE_1M	Ant1	2402	-6.49	≤8	PASS
		2440	-5.51	≤8	PASS
		2480	-5.96	≤8	PASS
BLE_2M	Ant1	2402	-9.03	≤8	PASS
		2440	-8.67	≤8	PASS
		2480	-9.49	≤8	PASS



Test Graphs



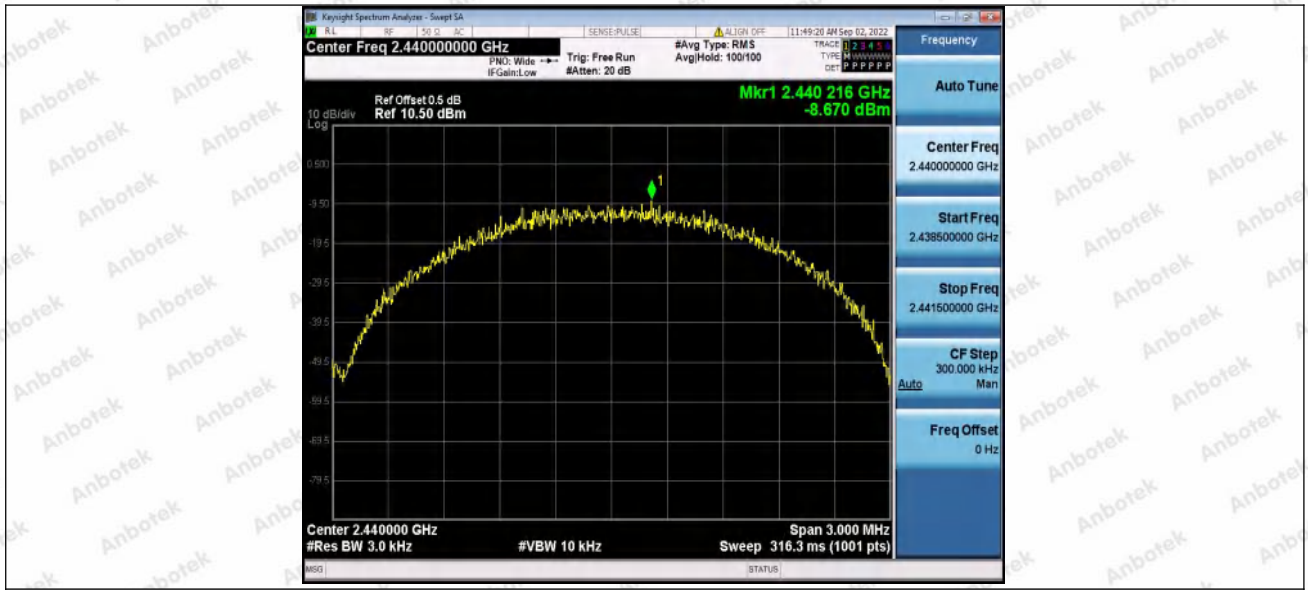


BLE_2M_Ant1_2402

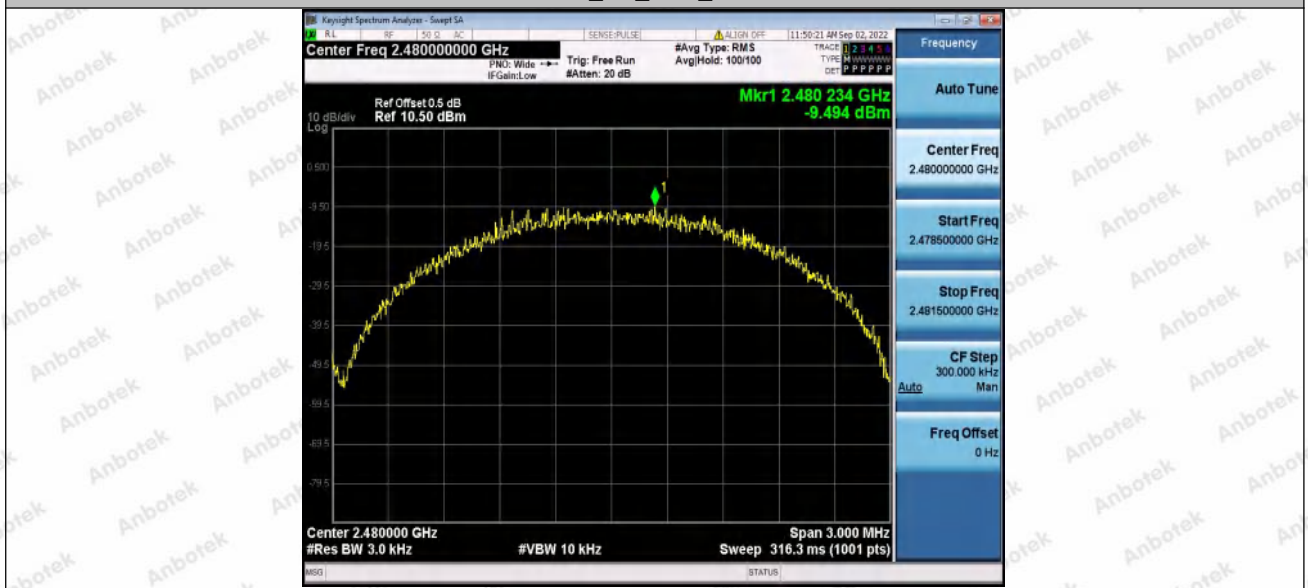


BLE_2M_Ant1_2440





BLE_2M_Ant1_2480



Appendix E: Band edge measurements

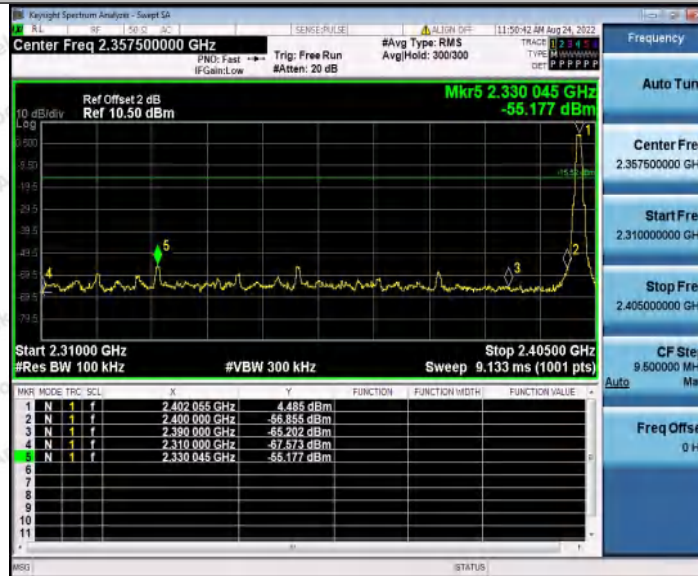
Test Result

TestMode	Antenna	ChName	Frequency[MHz]	RefLevel[dBm]	Result[dBm]	Limit[dBm]	Verdict
BLE_1M	Ant1	Low	2402	4.49	-55.18	≤-15.52	PASS
		High	2480	4.85	-63.27	≤-15.16	PASS
BLE_2M	Ant1	Low	2402	3.09	-29.82	≤-16.91	PASS
		High	2480	2.55	-61.58	≤-17.45	PASS

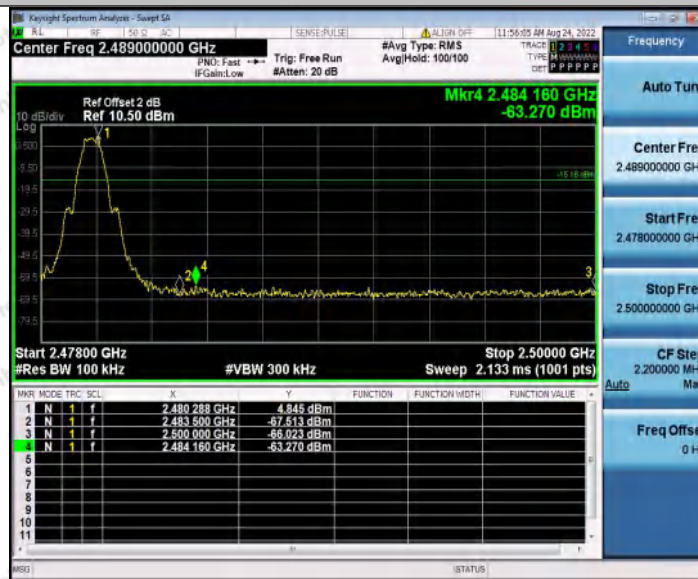


Test Graphs

BLE_1M_Ant1_Low_2402

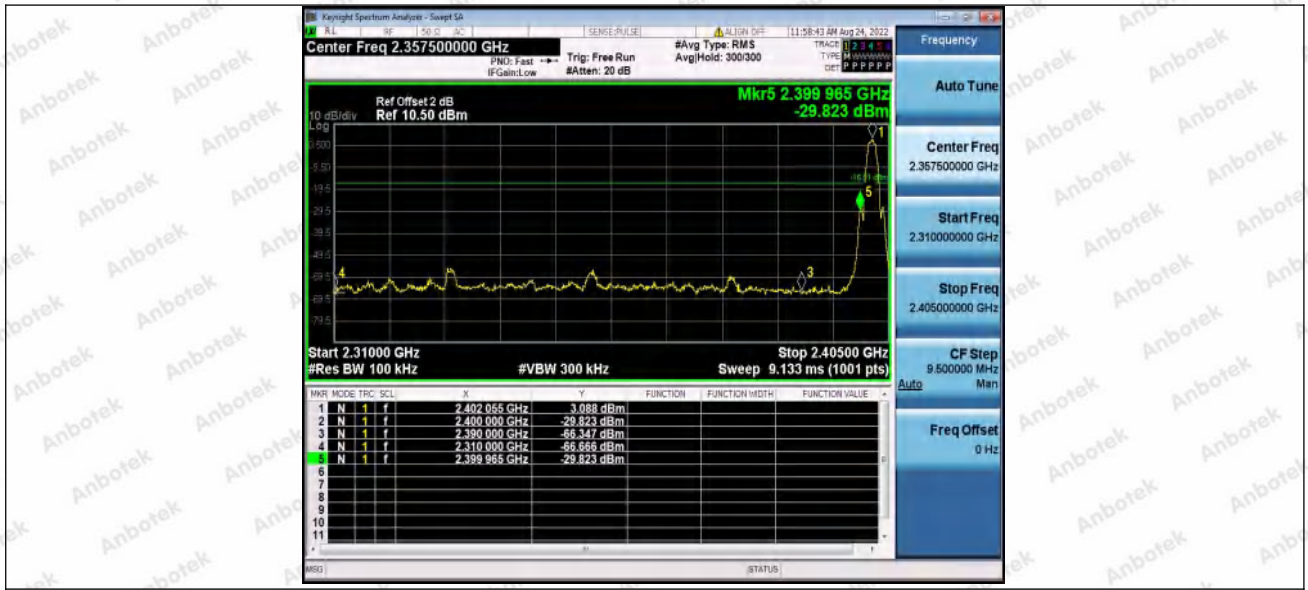


BLE_1M_Ant1_High_2480

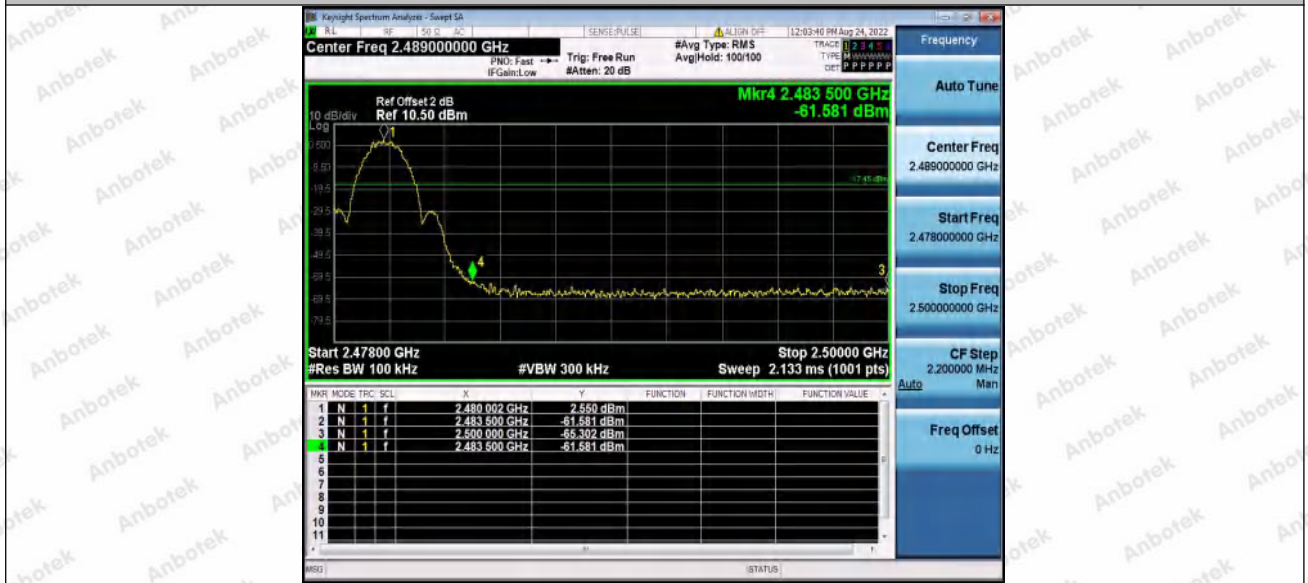


BLE_2M_Ant1_Low_2402





BLE_2M_Ant1_High_2480



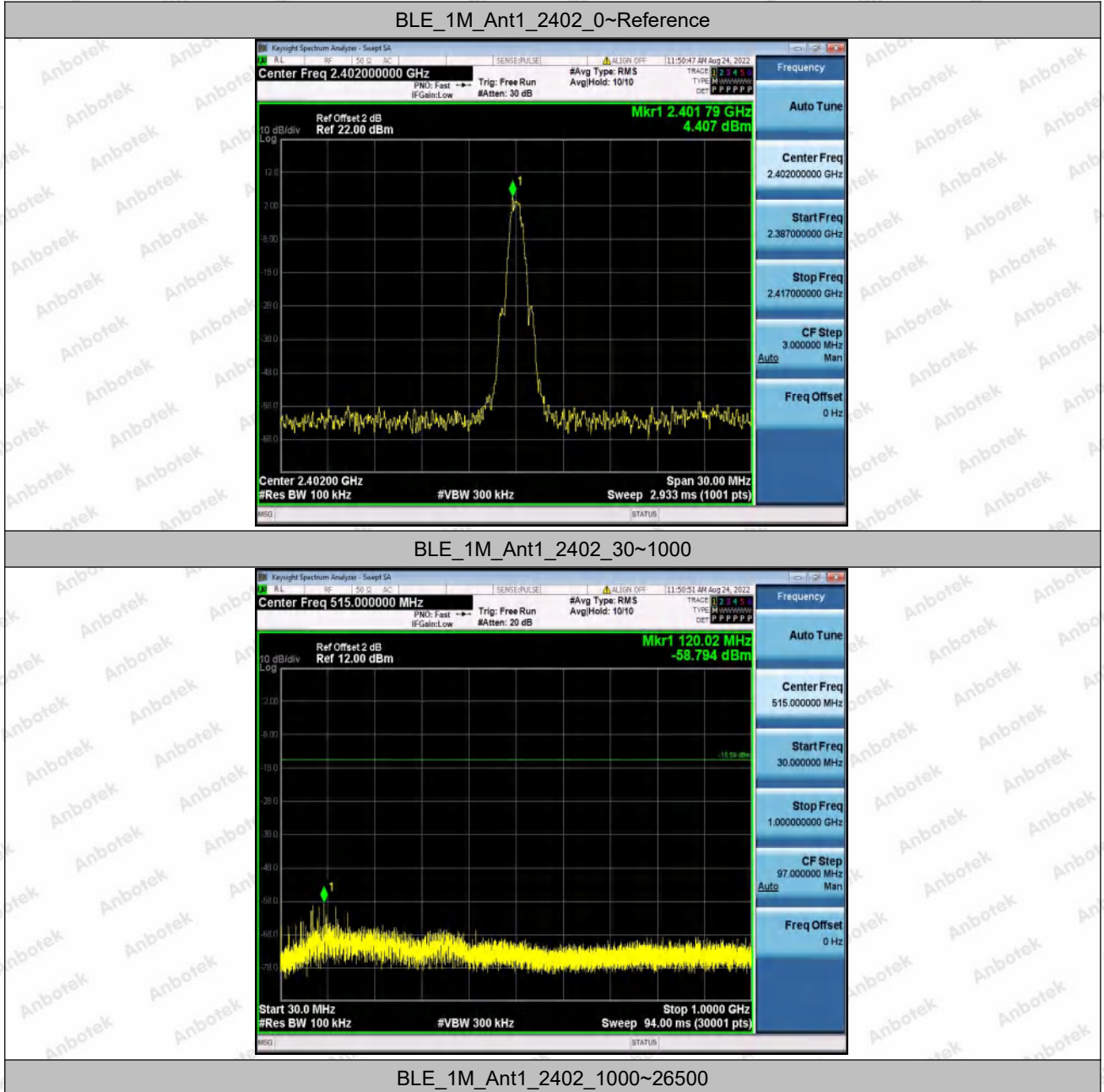
Appendix F: Conducted Spurious Emission

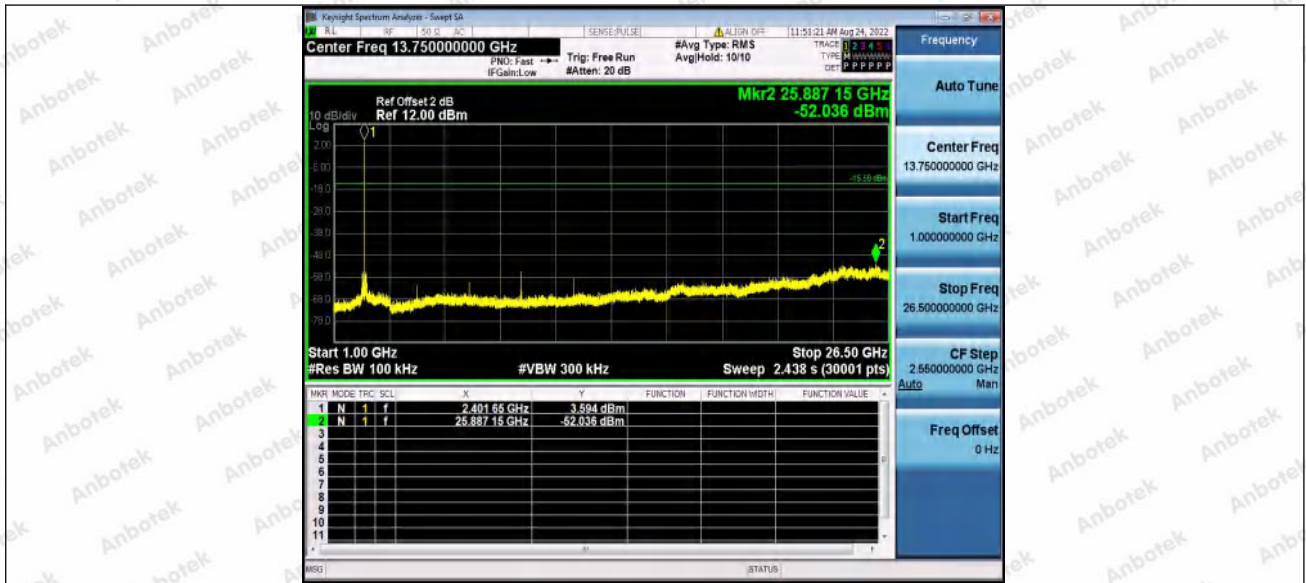
Test Result

TestMode	Antenna	Frequency[MHz]	FreqRange [MHz]	RefLevel [dBm]	Result[dBm]	Limit[dBm]	Verdict
BLE_1M	Ant1	2402	Reference	4.41	4.41	---	PASS
			30~1000	4.41	-58.79	≤-15.59	PASS
			1000~26500	4.41	-52.04	≤-15.59	PASS
		2440	Reference	2.57	2.57	---	PASS
			30~1000	2.57	-58.78	≤-17.43	PASS
			1000~26500	2.57	-52.42	≤-17.43	PASS
		2480	Reference	3.87	3.87	---	PASS
			30~1000	3.87	-58.28	≤-16.13	PASS
			1000~26500	3.87	-50.49	≤-16.13	PASS
BLE_2M	Ant1	2402	Reference	1.88	1.88	---	PASS
			30~1000	1.88	-58.37	≤-18.12	PASS
			1000~26500	1.88	-52.43	≤-18.12	PASS
		2440	Reference	1.95	1.95	---	PASS
			30~1000	1.95	-58.7	≤-18.05	PASS
			1000~26500	1.95	-52.26	≤-18.05	PASS
		2480	Reference	1.66	1.66	---	PASS
			30~1000	1.66	-57.97	≤-18.34	PASS
			1000~26500	1.66	-50.72	≤-18.34	PASS

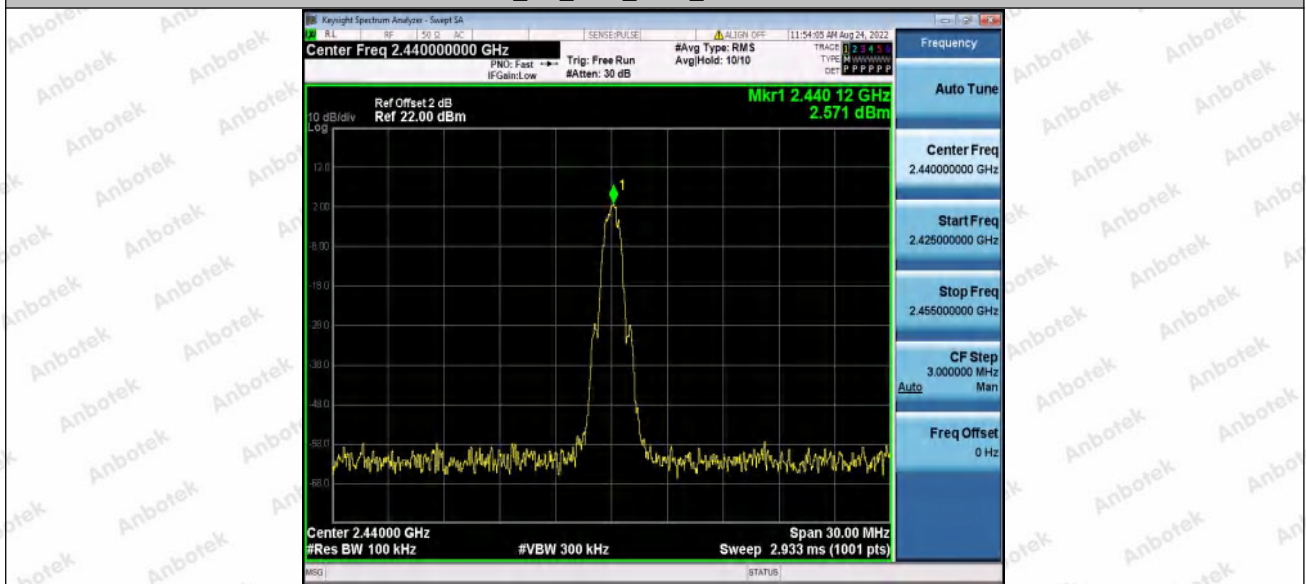


Test Graphs



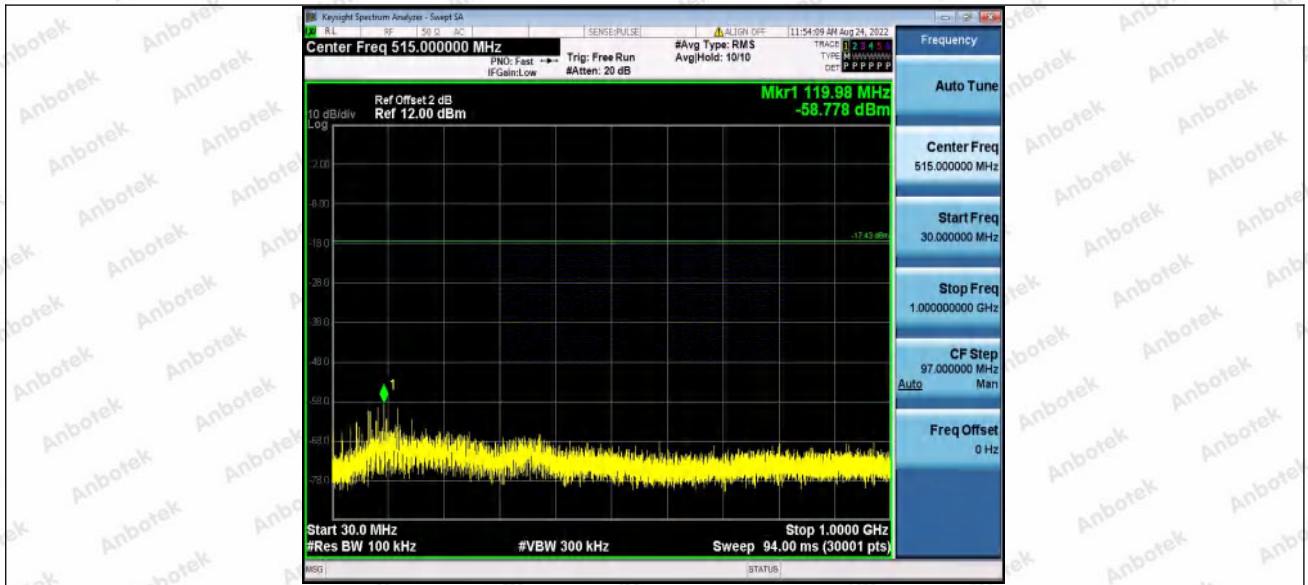


BLE_1M_Ant1_2440_0~Reference

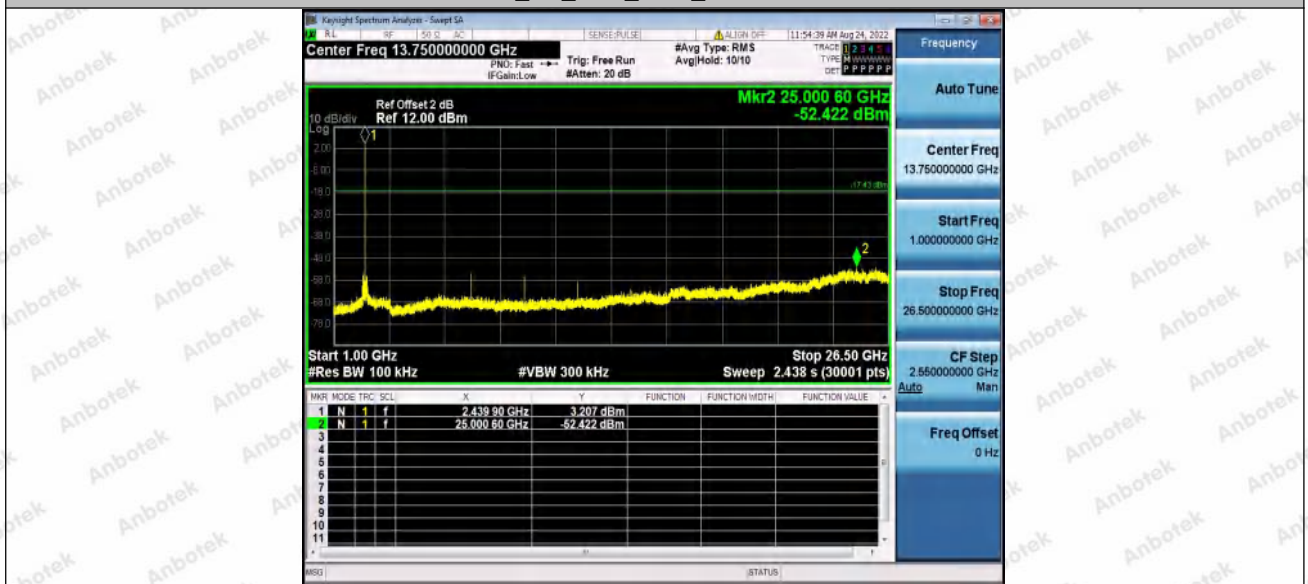


BLE_1M_Ant1_2440_30~1000



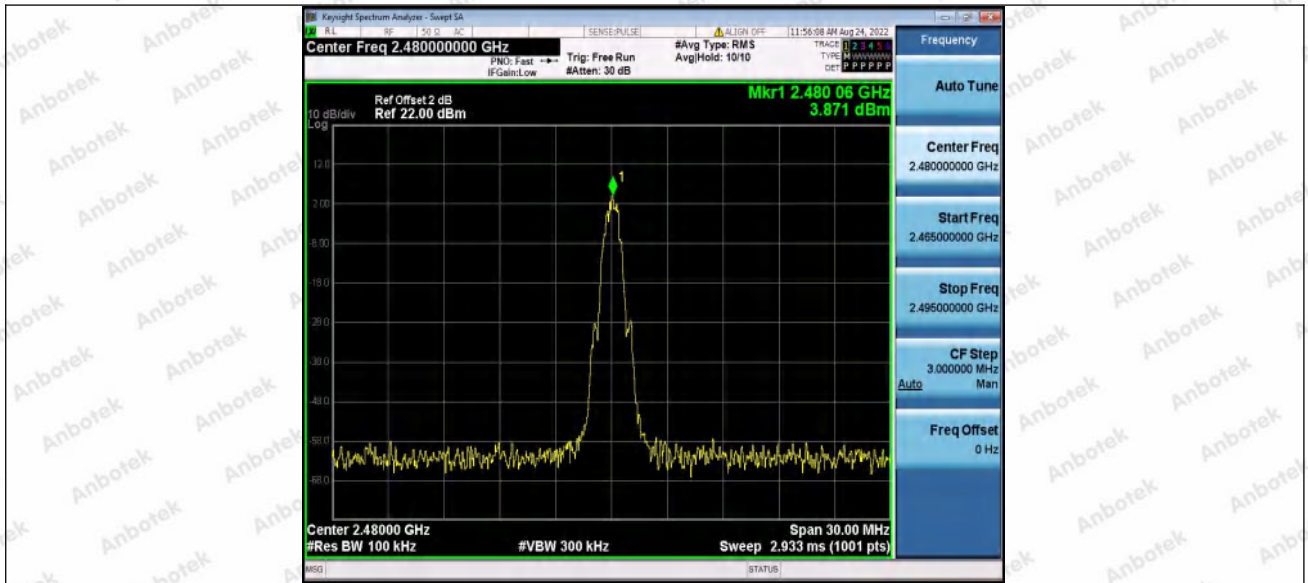


BLE_1M_Ant1_2440_1000~26500

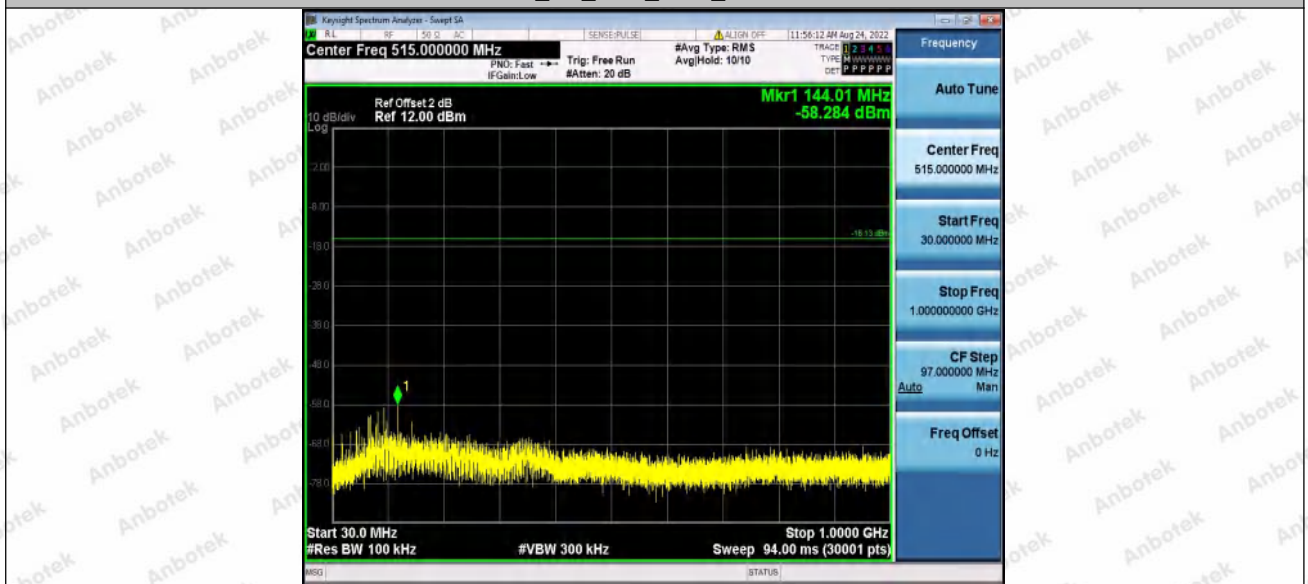


BLE_1M_Ant1_2480_0~Reference



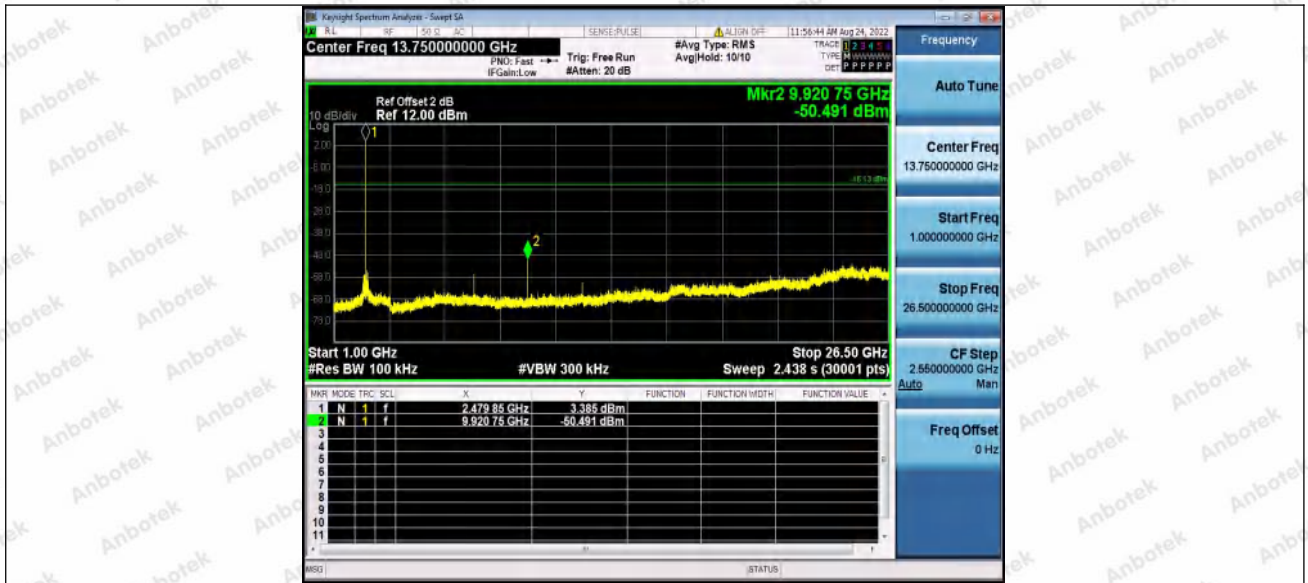


BLE_1M_Ant1_2480_30~1000

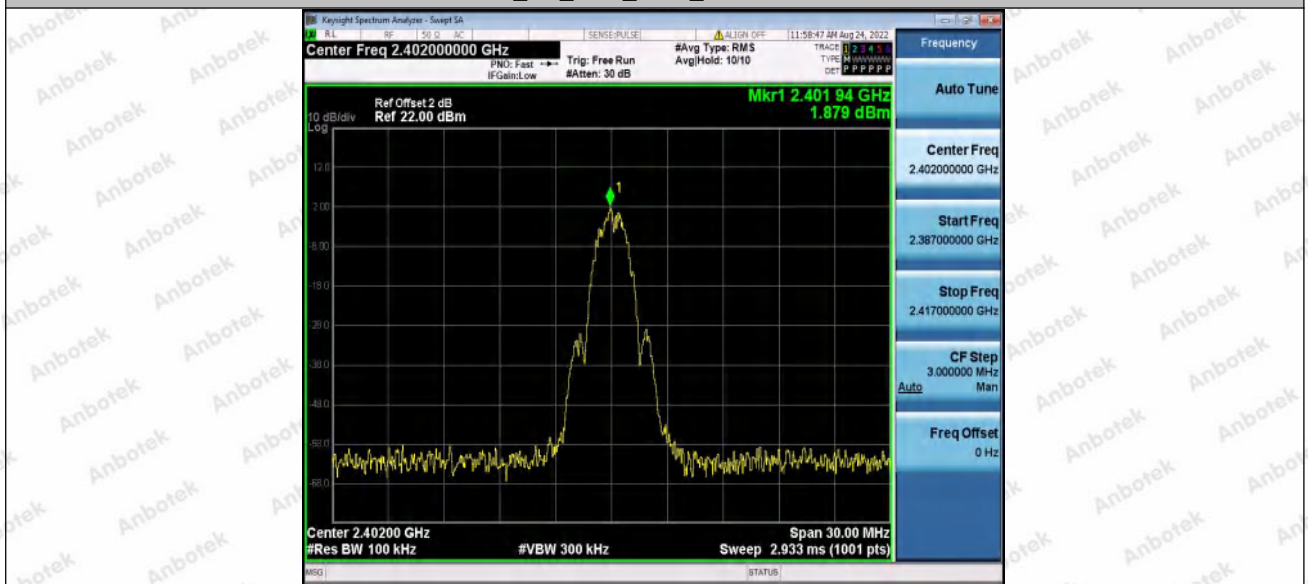


BLE_1M_Ant1_2480_1000~26500



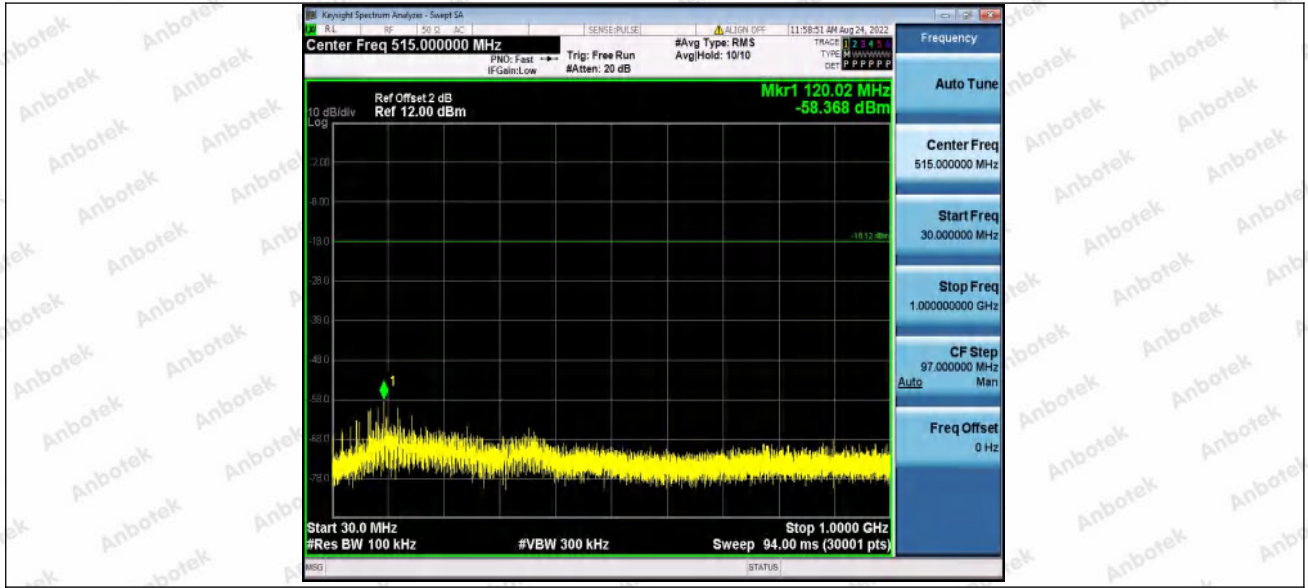


BLE_2M_Ant1_2402_0~Reference

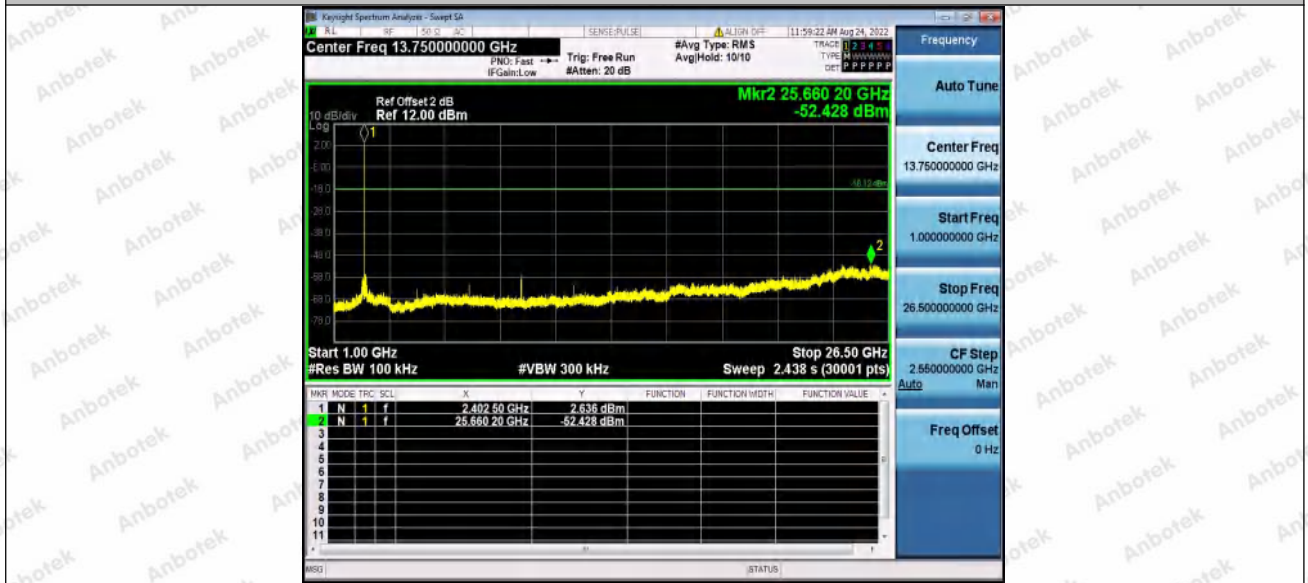


BLE_2M_Ant1_2402_30~1000



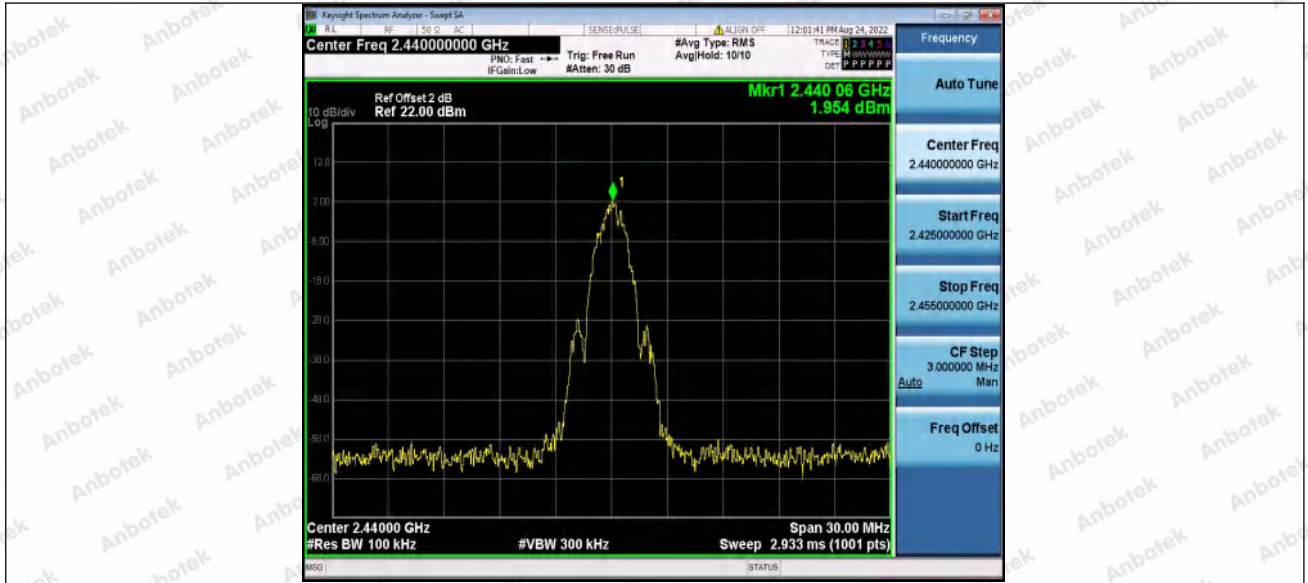


BLE_2M_Ant1_2402_1000~26500

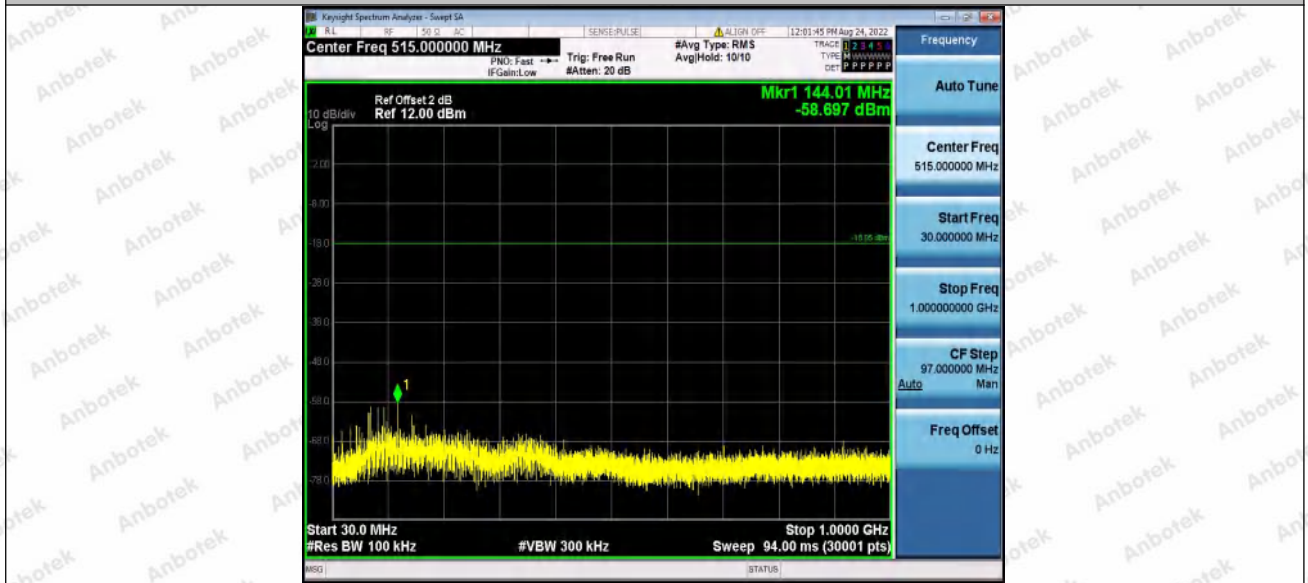


BLE_2M_Ant1_2440_0~Reference



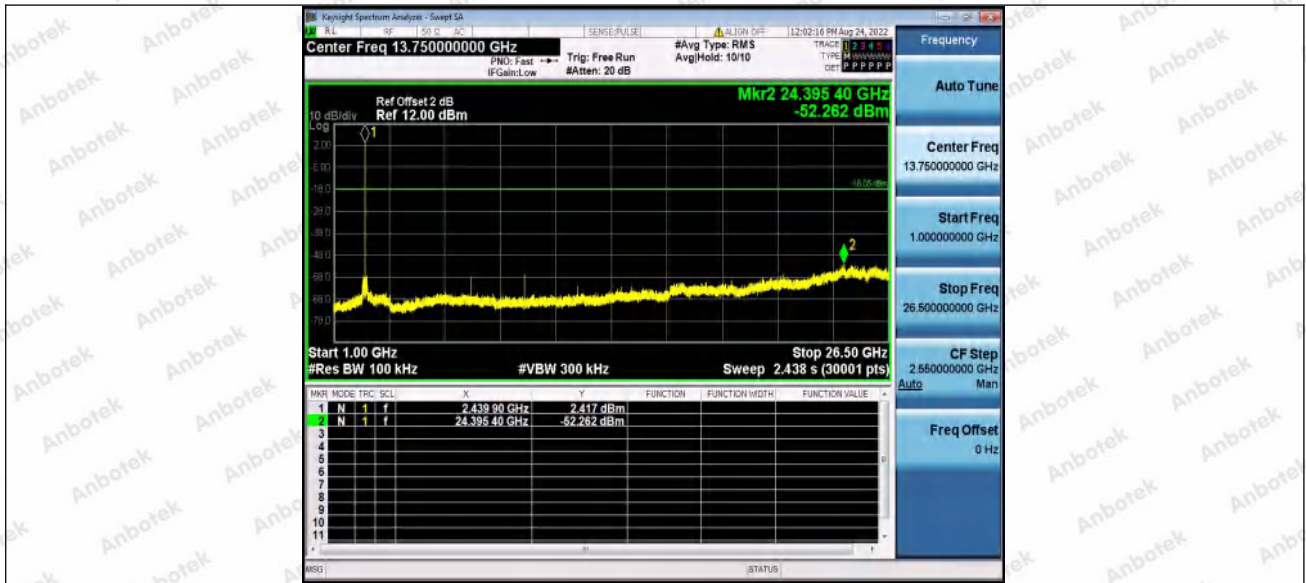


BLE_2M_Ant1_2440_30~1000

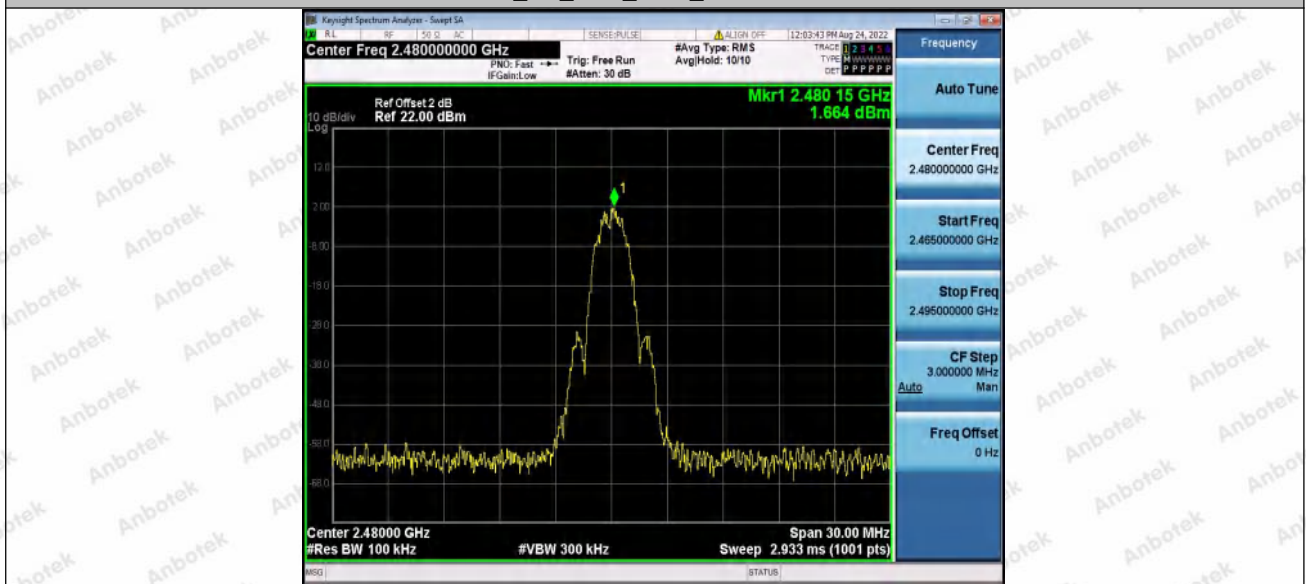


BLE_2M_Ant1_2440_1000~26500



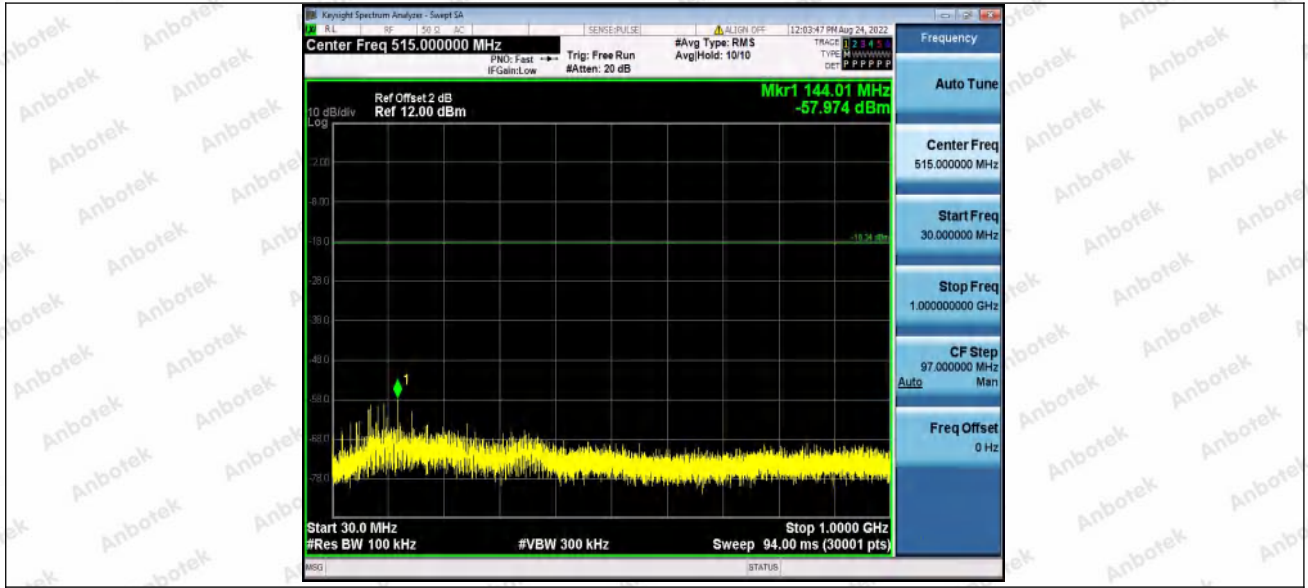


BLE_2M_Ant1_2480_0~Reference

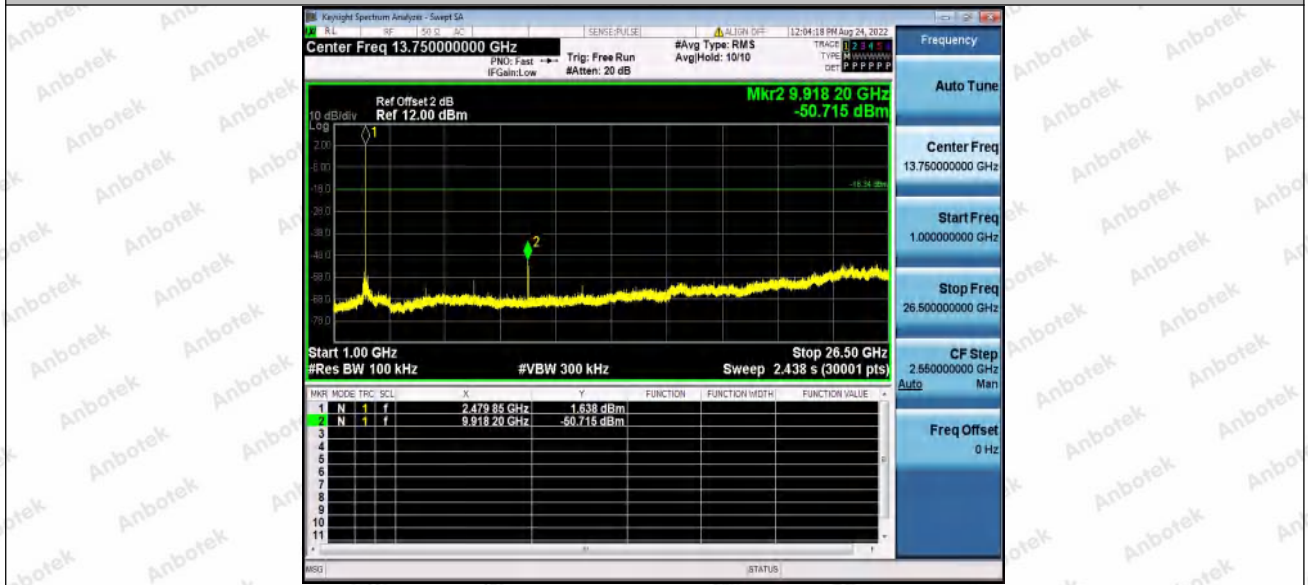


BLE_2M_Ant1_2480_30~1000





BLE_2M_Ant1_2480_1000~26500



Appendix G: Duty Cycle

Test Result

TestMode	Antenna	Frequency[MHz]	ON Time [ms]	Period [ms]	Duty Cycle [%]	Duty Cycle Factor[dB]
BLE_1M	Ant1	2440	10.13	10.13	100	0
BLE_2M	Ant1	2440	10.13	10.13	100	0



Test Graphs

BLE_1M_Ant1_2440



BLE_2M_Ant1_2440



----- End of Report -----

