

# Sonostar SmartFit Product Manual



## Getting Started

### Your Sonostar SmartFit Bluetooth Activity Tracker will contain:

- Sonostar SmartFit Bluetooth Activity Tracker
- 3V Lithium Coin battery, CR 2032

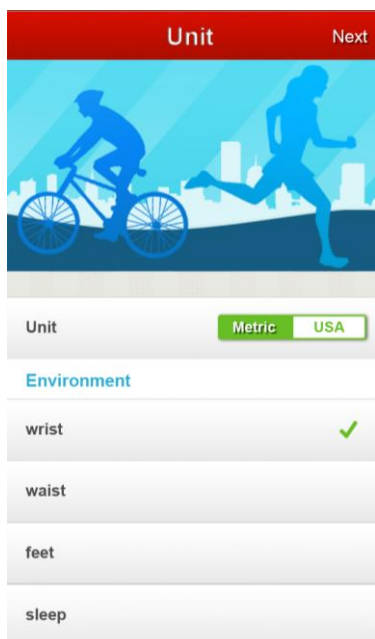
### Setting up your Sonostar SmartFit

- Remove the lower case, one of your 3 upper cases and coin battery from the packaging. .
- Put one O Ring along the edge of the upper case.
- Put the coin battery on the lower case, with the “+” sign facing up. The battery should rest in the center of the compartment.
- When the battery is in place, insert a ruler or other flat object in the slot on the back of the unit to turn the door clockwise and lock your lower case with its upper case until the mark matches.

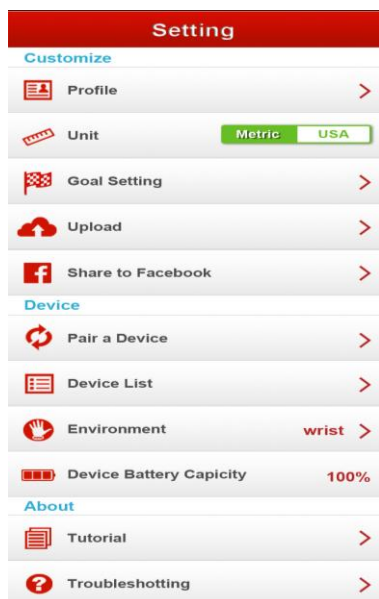
## Setting Up Your Sonostar SmartFit on your iPhone 4S+ and Android OS 4.3+

If you have an iPhone 4S or higher, and Android OS 4.3 or higher, you have the option to set up and sync your SmartFit via that device. To get set up with your SmartFit, please do the following:

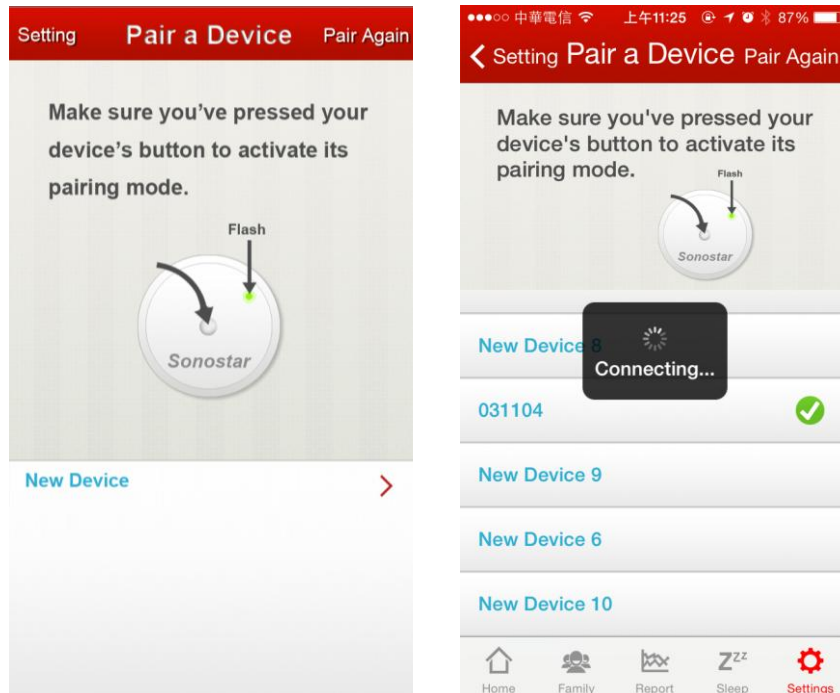
- Download the iPhone app from the App store or the Android app from the Google play.
- When you open the SmartFit App for the first time, you will be prompted to import basic information.



- Once you've into the app, select the "Pair a Device" button in the Settings page.



1. Insert the battery and close the battery door.
  2. Make sure the Activity Tracker is active.
  3. Move your SmartFit near by the iPhone or Android device.
- When your SmartFit has been discovered, you'll be available to click the "New Device" button to pairing with your Activity Tracker.



## Using your Sonostar SmartFit

### Wearing your SmartFit

- Your SmartFit is most accurate when worn on or close to the body. A belt, wristband, shoes are all ideal places to wear your SmartFit.
- A wristband is provided, designed to keep it on your wrist.
- Your SmartFit is sweat, rain, and splash resistant, but not waterproof. It is not intended to be worn swimming.

### Battery

- Your SmartFit runs on a replaceable 3V coin battery, CR2032. It can be found wherever batteries are sold.
- Your battery should last 6 months with regular use.
- When your battery drops below 20% a low battery indicator will show on your SmartFit App.
- If your SmartFit's battery drains, purchase a new 3V coin battery, CR2032. Use the subsidiary coin or ruler to unlock the battery door compartment, located on the back of the SmartFit. Your old battery can be recycled.

## Federal Communication Commission Interference Statement

This equipment has been tested and found to comply with the limits for a Class B digital device, pursuant to Part 15 of the FCC Rules. These limits are designed to

provide reasonable protection against harmful interference in a residential installation. This equipment generates, uses, and can radiate radio frequency energy and, if not installed and used in accordance with the instructions, may cause harmful interference to radio communications. However, there is no guarantee that interference will not occur in a particular installation. If this equipment does cause harmful interference to radio or television reception, which can be determined by turning the equipment off and on, the user is encouraged to try to correct the interference by one or more of the following measures:

- Reorient or relocate the receiving antenna.
- Increase the separation between the equipment and receiver.
- Connect the equipment into an outlet on a circuit different from that to which the receiver is connected.
- Consult the dealer or an experienced radio/TV technician for help.

#### **FCC Caution:**

This device complies with Part 15 of the FCC Rules. Operation is subject to the following two conditions: (1) This device may not cause harmful interference, and (2) this device must accept any interference received, including interference that may cause undesired operation.

The user that changes or modifications not expressly approved by the party responsible for compliance could void the user's authority to operate the equipment.