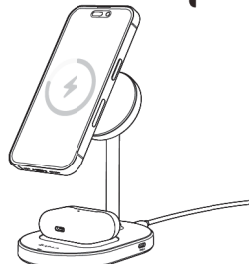


ADAM

Q2



OMNIA M2+ Q2 2+1 Wireless Charging Station

ENGLISH User Manual
(READ MANUAL BEFORE PRODUCT USE)

Specification

OMNIA M2+ Q2 2+1 Wireless Charging Station

Input:

USB-C Female | 5V = 3A / 9V = 3A

Output:

- Qi2 Charger: 5W/5W, 7.5W/7.5W, 12W/15W
- AirPods Charging Base: 5W/5W (5W when AirPods are being charged)
- USB-C: 5W/5W

Compatibility:

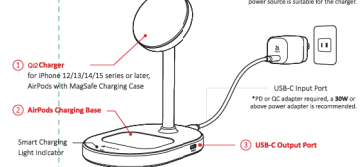
iPhone 15 Pro Max, iPhone 15 Pro, iPhone 15 Plus, iPhone 15, iPhone 14 Pro Max, iPhone 14 Pro, iPhone 14 Plus, iPhone 14, iPhone 13 Pro Max, iPhone 13 Pro, iPhone 13, iPhone 13 mini, iPhone 12 Pro Max, iPhone 12 Pro, iPhone 12, iPhone 12 mini

Compatible with official MagSafe cases

AirPods with MagSafe Charging Case
Wireless Charging Case for AirPods

Size: 85 x 125 x 145 mm
Weight: 266 g

Product Introduction



Recommended Accessory

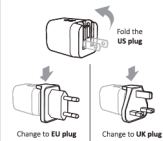
OMNIA P3 USB C 33W Compact Wall Charger

Input: 100-240V~, 50/60Hz, 1.2A
Output: 3.3-11V=3A(MPS) / 5V=3A / 9V=3A / 12V=2.5A / 15V=2A / 20V=1.5A
Size: 33 x 31 x 40.1 mm Weight: 47.1 g

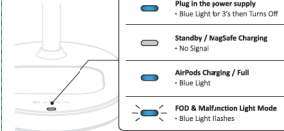
OMNIA P33 GaN USB C 33W Compact Wall Charger

Input: 100-240V~, 50/60Hz, 0.8A
Output: 3.3-11V=3A(MPS) / 3.3-16V=2A(MPS) / 5V=3A / 9V=3A / 12V=2.5A / 15V=2A / 20V=1.5A
Size: 32 x 32 x 42 mm Weight: 47.1 g

OMNIA P3 Instruction

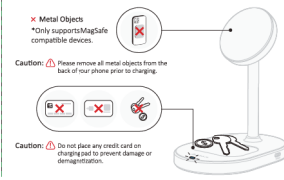


Light Mode



FOD (Foreign Object Detection)

The light blinks when metal foreign objects are detected on the wireless charger.



Protective Function

- Multiple Circuit Protection
- Over-Voltage Protection
- Over-Heat Protection
- Over-Current Protection
- Short-Circuit Protection
- Flame Retardant Protection

Attention

- ✗ Do not disassemble, puncture, drop, bend or modify
- 🚫 Do not shake while charging
- 🔌 Unplug the device when fully charged
- 🚫 Do not expose to liquids
- 🚫 Keep away from children
- 🚫 Avoid extreme temperatures
- 📅 3 years warranty
- 🔧 For the fastest and safest charge, use an ADAM cable, your device's original cable or a certified cable (such as MFi)
- 📄 The information in this user manual may be changed without prior notice, please scan the QR code for the latest version.

FCC Statement:

This device complies with Part 15 of the FCC Rules. Operation is subject to the following two conditions: (1) This device may not cause harmful interference, and (2) this device must accept any interference received, including interference that may cause undesired operation.

Warning: Changes or modifications not expressly approved by the party responsible for compliance could void the user's authority to operate the equipment.

Note: This equipment has been tested and found to comply with the limits for a Class B digital device, pursuant to Part 15 of the FCC Rules. These limits are designed to provide reasonable protection against harmful interference in a residential installation.

This equipment generates, uses, and can radiate radio frequency energy and, if not installed and used in accordance with the instructions, may cause harmful interference to radio communications. However, there is no guarantee that interference will not occur in a particular installation. If this equipment does cause harmful interference to radio or television reception, which can be determined by turning the equipment off and on, the user is encouraged to try to correct the interference by one or more of the following measures:

- (1) Reorient or relocate the receiving antenna.
- (2) Increase the separation between the equipment and receiver.
- (3) Connect the equipment into an outlet on a circuit different from that to which the receiver is connected.
- (4) Consult the dealer or an experienced radio / TV technician for help.

FCC Radiation Exposure Statement:

This equipment complies with FCC radiation exposure limits set forth for an uncontrolled environment. This equipment should be installed and operated with minimum distance 20cm between the radiator & your body.



For more information, please visit ADAM store.