

#01_Bluetooth_LE_Front_0mm_Ch0

Communication System: Bluetooth; Frequency: 2402 MHz; Duty Cycle: 1:3.185

Medium: HSL_2450_210904 Medium parameters used: $f = 2402$ MHz; $\sigma = 1.733$ S/m; $\epsilon_r = 40.516$; $\rho = 1000$ kg/m³

Ambient Temperature : 23.8 °C; Liquid Temperature : 22.8 °C

DASY5 Configuration:

- Probe: ES3DV3 - SN3184; ConvF(4.61, 4.61, 4.61) @ 2402 MHz; Calibrated: 2020/9/23
- Sensor-Surface: 3mm (Mechanical Surface Detection)
- Electronics: DAE4 Sn1399; Calibrated: 2021/2/16
- Phantom: SAM_Left; Type: QD000P40CD; Serial: TP:1684
- Measurement SW: DASY52, Version 52.10 (4); SEMCAD X Version 14.6.14 (7483)

Area Scan (51x61x1): Interpolated grid: dx=1.200 mm, dy=1.200 mm

Maximum value of SAR (interpolated) = 0.0379 W/kg

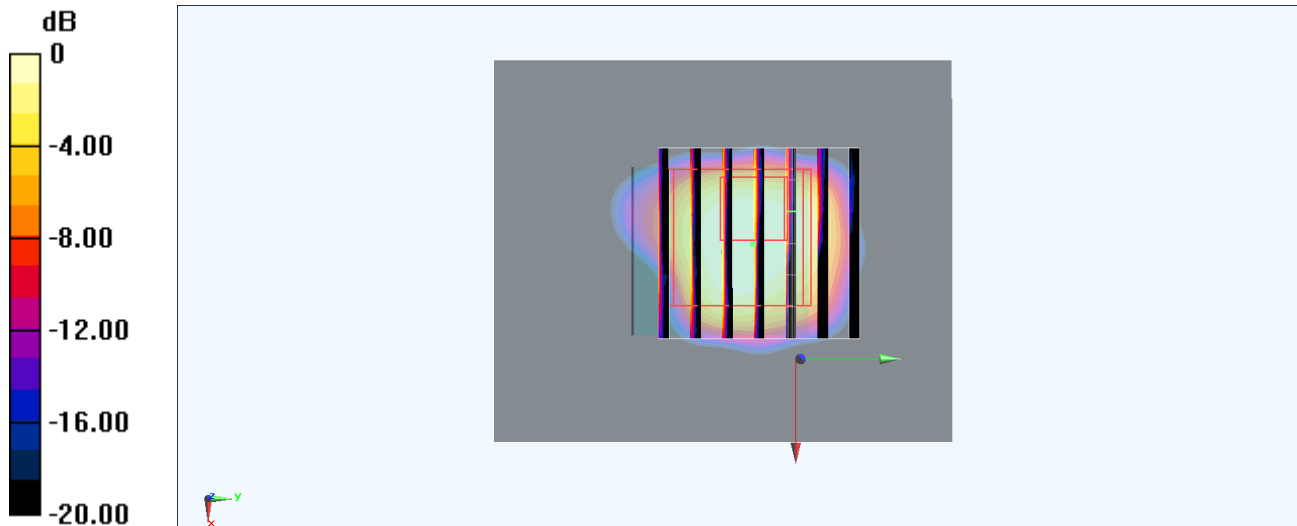
Zoom Scan (7x7x7)/Cube 0: Measurement grid: dx=5mm, dy=5mm, dz=5mm

Reference Value = 4.396 V/m; Power Drift = -0.02 dB

Peak SAR (extrapolated) = 0.0830 W/kg

SAR(1 g) = 0.022 W/kg; SAR(10 g) = 0.00722 W/kg

Maximum value of SAR (measured) = 0.0312 W/kg



0 dB = 0.0312 W/kg = -15.06 dBW/kg