

Location Update

Most Recent Location for Keys



1900 S Norfolks, San Mateo. 3mins ago

[Turn Off Notify When Found](#)



Car Keys

Find



Wallet

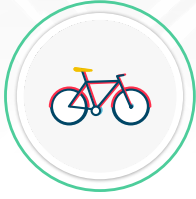
Find



1













Bike



Nearby

Now

Find

-  **Location History** >
-  **Smart Alerts** **Premium** >
-  **Item Reimbursement** **Protect** >
-  **Find Your Phone** On >
-  **Shop Tile** >
-  **Unlimited Sharing** >
-  **Tile ringtones** Bionic Birdie >
-  **Siri Shortcuts** >
-  **More Options** >
-  **Help** >



More Options



Change Photo

Name Bike

Category Bike >

Actions

Tile Default Volume Loud >

Replace Tile >

Transfer Tile >

Hide Tile >

Basic Reimbursement >

Subscription

Upgrade to Premium Protect >

Device Details

Activated 2/15/18, 8:45AM

Firmware >

FCC ID: 2ABXLT1401N

IC: 11858A-T1401N

 CCAFXXXXXXXX

Model: T1401N

JA1

TC

R1

R2

保証内容

保証内容

Tileはライフスタイルをより豊かにするため、全ての製品に1年間の保証を提供しています。日本での保証内容はtile.com / warrantyをご確認ください。

使用と保管方法

全てのTileは耐水性（生活防水）で完全防水ではありません。Tileがよこれた場合は濡れた布で拭いてください。Tileの使用環境温度範囲は-10°C (14°F) から60°C (140°F)です。高温や低温など使用環境温度を超えますと、正常に稼働しなくなる原因となります。◆窒息の危険性-Tileデバイスはとても便利です。おもちやではありません。Ultra, Pro, Mateはボタン型電池を使用しています。飲み込むと非常に危険です。幼児やペットの手の届かない場所にて管理・保管してください。

環境への配慮

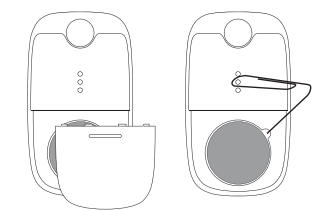
他のテクノロジー製品同様、Tileは誤飲や間違えて使用すると健康や環境に影響を与える可能性がある有害物質が含まれている可能性があります。Tileデバイスは99%リサイクル可能です。Tileは皆さまがデバイスとボタン電池をそれぞれの地域で適切にリサイクル、処理することを推奨しています。詳しくはお住まいの地方自治体の廃棄処分方法に従ってください。

特許情報

Tileの革新的な検索ソリューションは、世界中の多数の特許で保護されています。詳細については、tile.com/patentsを参照してください。

電池交換

すべてのTileデバイスは、ご利用から1年間の保証付きです。Mate, Sticker, Slimは電池交換不可モデルです。UltraとProは交換可能なCR2032電池を使用しています。以下の簡単な手順に従って、UltraおよびProのバッテリーを自分で簡単に取り外して交換することができます。



電池の蓋を押しながらスライドさせて外します。 クリップ等を使用して電池を取り外します。

詳細については、tile.comをご確認ください。

保固資訊

保固資訊

Tile的設計目的是提高生活便利性。這是每一部裝置都享有保固保證的原因。若要了解國家/地區專屬的保固資訊，請瀏覽 tile.com/warranty。

使用與保養

所有 Tile 都具備防水功能。如有需要，請使用濕布清潔 Tile。Tile 在 -10° C (14° F) 與 60° C (140° F) 之間的環境下效能最佳。暴露在極度酷熱或寒冷的溫度下可能會影響 Tile 的效能。緊急危險 - Tile 很有趣，但不應玩弄。Ultra, Pro 和 Mate 含有鋰電池，吞下會對人體有害。請將 Tile 放在孩童和寵物碰不到的地方。

環境考慮因素

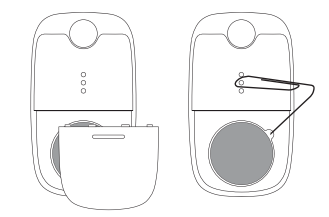
Tile 裝置和大多數科技裝置一樣可能包含有害物質。在不當使用時可能會對健康與環境造成不良影響。Tile 裝置有 99% 的部分可回收。建議您將使用過的裝置與電池拿到當地的電子廢棄物回收中心，加以回收。如無電子廢棄物回收系統的詳細資訊，請連絡您的當地或區域廢棄物管理機構。

專利資訊

Tile 創新的尋物解決方案在世界各地獲得多項專利。請參閱 tile.com/patents 了解詳情。

電池替換

Tile 裝置的全型號均保證持續運作一年。Mate, Sticker 和 Slim 有不可替換的電池。Ultra 和 Pro 有可替換的 CR2032 電池。只要遵循下方簡單的指示，您就能輕鬆地自行取出及替換 Ultra 與 Pro 的電池。



按住電池蓋並把它移開。 使用溫軟針將電池移除。

如需詳細資訊，請瀏覽 tile.com

Regulatory Safety Information



FCC Compliance Statement

This device complies with Part 15 of the FCC Rules. Operation is subject to the following two conditions: (1) This device may not cause harmful interference, and (2) this device must accept any interference received, including interference that may cause undesired operation. This equipment has been tested and found to comply with the limits for a Class B digital device, pursuant to Part 15 of the FCC Rules.

These limits are designed to provide reasonable protection against harmful interference in a residential installation. This equipment generates, uses, and can radiate radio frequency energy and, if not installed and used in accordance with the instructions, may cause harmful interference to radio communications. However, there is no guarantee that interference will not occur in a particular installation. If this equipment does cause harmful interference to radio or television reception, which can be determined by turning the equipment off and on, the user is encouraged to try to correct the interference by one or more of the following measures:

- Reorient or relocate the receiving antenna.
- Increase the separation between the equipment and receiver.
- Connect the equipment into an outlet on a circuit different from that to which the receiver is connected.
- Consult the dealer or an experienced radio/TV technician for help.

Warning: changes or modifications not expressly approved by Tile, Inc. could void the user's authority to operate this equipment.

Industry Canada Statement

This device contains licence-exempt transmitter(s)/ receiver(s) that comply with Innovation, Science and Economic Development Canada's licence-exempt RSS(s). Operation is subject to the following two conditions:

1. This device may not cause interference.
 2. This device must accept any interference, including interference that may cause undesired operation of the device.
- L'émetteur/récepteur exempt de licence contenu dans le présent appareil est conforme aux CNR d'Innovation, Sciences et Développement économique Canada applicables aux appareils radio exempts de licence. L'exploitation est autorisée aux deux conditions suivantes :
1. L'appareil ne doit pas produire de brouillage ;
 2. L'appareil doit accepter tout brouillage radioélectrique subi, même si le brouillage est susceptible d'en compromettre le fonctionnement.

FCC/IC Statement for RF Exposure

This device meets the FCC/IC requirements for RF exposure in public or uncontrolled environments. Cet appareil est conforme aux conditions de la FCC/IC en matière de RF dans des environnements publics ou incontrôlés.

How to access electronic label: Choose: Settings (on top right corner) > More Options > FCC ID & IC ID & NCC ID

Model 型號	Frequency Range 頻率範圍	RF Power dBm (ERP)
T140RN T140SN	2400 - 2485.3 Mhz	6.31 dBm
T130SN T130SN	2400 - 2485.3 Mhz	8.23 dBm
T160RN T160SN	2400 - 2485.3 Mhz	2.16 dBm
T160RN T160SN	2400 - 2485.3 Mhz	5.57 dBm

Regulatory Safety Information



Manufacturer's Declaration of European Conformity (CE)

Hereby, Tile, Inc. declares that the Bluetooth transmitter device is in compliance with Directive 2014/53/EU. The full text of the EU declaration of conformity is available at the following internet address: www.tile.com/compliance

Par la présente, Tile, Inc. déclare que le dispositif émetteur Bluetooth est conforme à la Directive 2014/53/UE. Le texte intégral de la déclaration de conformité de l'UE est disponible à l'adresse Internet suivante : www.tile.com/compliance

Hierbij verklaart Tile, Inc. dat het Bluetooth-zendapparaat voldoet aan Richtlijn 2014/53/EU. De volledige tekst van de EU-conformiteitsverklaring is beschikbaar op het volgende internetadres: www.tile.com/compliance

Hiermit erklärt Tile, Inc., dass das Bluetooth-Sendegerät der Richtlinie 2014/53/EU entspricht. Der vollständige Wortlaut der EU-Konformitätserklärung ist unter folgender Internetadresse abrufbar: www.tile.com/compliance

Por la presente, Tile, Inc. declara que el dispositivo transmisor Bluetooth cumple con la Directiva 2014/53/UE. El texto completo de la declaración de conformidad de la UE está disponible en la siguiente dirección de Internet: www.tile.com/compliance

Con la presente, Tile, Inc. dichiara che il dispositivo trasmettore Bluetooth è conforme alla Direttiva 2014/53/UE. Il testo integrale della dichiarazione di conformità UE è disponibile al seguente indirizzo Internet: www.tile.com/compliance

Tile, Inc. oświadcza, że nadajnik Bluetooth jest zgodny z Dyrektywą 2014/53/UE. Pełny tekst deklaracji zgodności UE jest dostępny na następującej stronie internetowej: www.tile.com/compliance

This telecommunication equipment conforms to NTC/NBCT technical requirement.

Este equipamento não tem direito à proteção contra interferência prejudicial e não pode causar interferência em sistemas devidamente autorizados.

La operación de este equipo está sujeta a las siguientes dos condiciones: (1) Es posible que este equipo o dispositivo no cause interferencia perjudicial y (2) este equipo o dispositivo debe aceptar cualquier interferencia, incluyendo la que pueda causar su operación no deseada.

AR Distribution
Avenida España 1173
Colonia Moderna
Guadalajara, Jalisco
44160



Complies with
IMDA Standards
DA106778

ユーザー登録

Tileをご購入頂きありがとうございます。

まず初めにユーザー登録をしてください。会員限定のお得情報や特別セールを実施しています。



ユーザー登録はこちら
gp.supportweb.jp/tile/signup

ユーザー登録特典

特典1 メールマガジン会員だけのお得情報をお届け
特典2 安心の電話サポート

保証書

※おお客様	ご住所	〒	—	—
	(ふりがな)	お電話番号 () —		
お名前	様			
販売店	販売店名	商品名	ご購入日より1年	
	お電話番号 () —	保証期間	ご購入日	年 月 日

サポート窓口

gp.supportweb.jp/tile

上記URLよりお問合せ下さい。
お問合せ頂く際にご購入証明のご提示をお願いする場合がございます。
お電話でのお問合せはユーザー登録が必要です。

보증 정보

보증 정보

Tile은 실용 더 간편하게 만들 수 있도록 설계되었습니다. 모든 장치에 제품 보증이 제공되는 이유로 바로 이 때문입니다. 해당 국가의 보증 정보를 보려면 tile.com/warranty를 참조하십시오.

취급 주의 사항

모든 Tile은 방수를 지원합니다. Tile이 오염된 경우 물이 살짝 묻은 천으로 닦아주세요. Tile은 10°C(14°F) ~ 60°C(140°F) 사이에서 작동합니다. 너무 뜨겁거나 너무 추운 곳에 두면 성능이 저하될 수 있습니다. 질식 위험 - Tile 장치가 귀걸이 헤드, 장난감이 아닙니다. Ultra, Pro 및 Mate에는 삼켰을 때 위험한 화학/배터리 폐기물이 포함되어 있습니다. 어린이나 애완동물의 손이 닿지 않는 곳에 배터리를 두시기 바랍니다.

환경에 대한 고려

대부분의 기술 장치들과 마찬가지로 Tile 장치는 오용될 경우 인해 건강 및 환경에 영향을 줄 수 있는 유해 물질을 포함할 수 있습니다. Tile 장치는 99%까지 재활용이 가능합니다. 오래된 장치 또는 배터리는 지역 재활용 센터를 이용해서 처리해주시기 바랍니다. 재활용 센터의 폐기물 수집 절차에 대한 자세한 내용은 해당 지역 재활용 센터에 문의하시기 바랍니다.

특히 정보

Tile의 혁신적인 분실 방지 솔루션은 전 세계에 등록된 여러 주의 작은 부품이 탈락되면 상실 수 있음

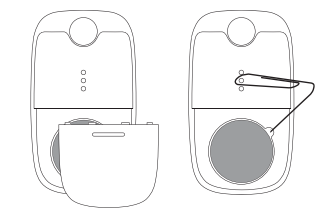
Tile은 일상 생활에서 일상적인 필수품을 찾는 데 도움이 되는 Bluetooth 장치로, 약간의 불편함을 앓아내고, 초석을 유지하여 최선을 다하고 중요한 일에 집중할 수 있도록 도와줍니다. 우리가 더 용도 파인더는 열쇠에서 지갑, 전화, 아연, 노트북, 애완동물 등에 이르기까지 무엇이든 말거나 붙이거나 부착할 수 있습니다!

이 제품은 블루투스 트래커입니다.

특히권으로 보호됩니다. 자세한 내용은 tile.com/patents를 참조하십시오.

배터리 교체

모든 Tile 장치에는 1년 보증이 제공됩니다. Mate, Sticker 및 Slim에는 비교형 배터리가 포함되어 있습니다. Ultra 및 Pro에는 교체형 CR2032 배터리가 포함되어 있습니다. 아래 표시된 간단한 안내에 따라 Ultra 및 Pro의 배터리를 직접 쉽게 분리하고 교체할 수 있습니다.



배터리 덮개를 누른 상태로 밀어서 분리하세요. 종이 물질을 사용하여 배터리를 분리하세요



WARNING!

KEEP BATTERIES OUT OF REACH OF CHILDREN

- Keep in original package until ready to use
- Swallowing may lead to serious injury in as little as 2 hours or death, due to chemical burns and potential perforation of the esophagus. Seek immediate help.
- Call a local poison control center for treatment information. **Australia:** 13 11 26 **Canada:** 1-800-268-9017 (Ontario), 1-800-567-8911(BC), 1-800-463-5060 (Quebec) **US:** 800-498-8666. **Verify suitable emergency call numbers for your country.**
- Do not use if the compartment is not secure.
- Dispose of used button batteries promptly and safely. Flat batteries can still be dangerous.
- Risk of fire and burns.
- Do not recharge, disassemble, heat (-20°C +70°C) or incinerate.

Rated voltage 3V
定格電圧 3V
Rated current *175 mA
定格電流 *175 mA

Taiwan—Safety Statement

取得審驗證明之低功率射頻器材，非經核准，公司、商號或使用者均不得擅自變更頻率、加大功率或變更原設計之特性及功能。低功率射頻器材之使用不得影響飛航安全及干擾合法通信；經發現有干擾現象時，應立即停用，並改善至無干擾時方得繼續使用。前述合法通信，指依電信管理法規規定之無線電通信。低功率射頻器材須符合合法通信或工業、科學及醫療用電波辐射性電機設備之干擾。

This equipment is not suitable for use in locations where children are likely to be present.

Regulatory Safety Information

This equipment is not suitable for use in locations where children are likely to be present.

Article 12

Without permission, any company, firm or user shall not alter the frequency, increase the power, or change the characteristics and functions of the original design of the certified lower power frequency electric machinery.

Article 14

The application of low power frequency electric machineries shall not affect the navigation safety no interfere a legal communication, if an interference is found, the service will be suspended until improvement is made and the interference no longer exists. The foregoing legal communication refers to the wireless telecommunication operated according to the telecommunications laws and regulations. The low power frequency electric machinery should be able to tolerate the interference of the electric wave radiation electric machineries and equipment for legal communications or industrial and scientific applications.

CAUTION! Small parts will cause choking hazards for babies or children if detached.

Taiwan—Recycling

電池警告：
此為裝有鋰電池。
若未遵照下列準則，則裝置內的鋰離子電池壽命可能會縮短或有損壞裝置、發生火災、化學品灼傷、電擊或爆炸/廢物的風險。
請勿拆解、壓孔或誤將裝置或電池。
請勿取出或嘗試取出使用者不可自行更換的電池。
請勿將電池曝曬於火熱、爆炸或其他危險中。
請勿使用尖銳物品取出電池。
電池應放在兒童拿不到的地方，以避免孩童誤吞食

Warranty & Use

Warranty Statements

Product warranty is limited to original defects in material and workmanship. Warranty does not cover collateral damage. Due misuse, abuse, incorrect charging and other inappropriate use of this product are not covered under warranty.

This warranty does not cover consumable parts, including batteries, unless damage is due to defects in materials or workmanship of the Product, or software (even if packaged or sold with the Product). Tile recommends that you use only approved/certified battery.

This product is not a toy or edible. Mobile device casings can interfere with signal strength and decrease Tile's visibility.

Australia—Warranty Statements

Our goods come with guarantees that cannot be excluded under the Australian Consumer Law. You are entitled to a replacement or refund for a major failure and compensation for any other reasonably foreseeable loss or damage. You are also entitled to have the goods repaired or replaced if the goods fail to be of acceptable quality and the failure does not amount to a major failure.

United Kingdom and Ireland

If a product is defective consumers may, in addition to any other rights which they may have under consumer law in the UK and Ireland, avail themselves of the rights contained in: for products purchased in Ireland: the Sale of Goods Act, 1933 (in particular Sections 12, 13, 14 and 15), the Sale of

Goods and Supply of Services Act 1980 and the European Communities (Certain Aspects of the Sale of Consumer Goods and Associated Guarantees) Regulations 2003 (S.I. No. 11/2003); for products purchased in the UK: the Sale of Goods Act 1979 (in particular Section 12), the Supply of Goods and Services Act 1982 (in particular Section 2) and the Sale and Supply of Goods to Consumers Regulations 2002.



The symbol above means that according to local laws and regulations your product and/or its battery shall be disposed of separately from household waste. When this product reaches its end of life, take it to a collection point designated by local authorities. The separate collection and recycling of your product and/or its battery at the time of disposal will help conserve natural resources and ensure that it is recycled in a manner that protects human health and the environment.

Company Headquarters

Tile, Inc.
1900 S. Norfolk St.
Suite 310
San Mateo, CA 94403 USA

JA2

KO

R3

R4

<p>1333 Broadway Suite P125 Oakland, CA 94612</p> <p>☎ 510.550.5910</p>	CLIENT	Tile	COLORS: 	FONTS: IMAGES:
	PROJECT			
	DATE			
	FILE NAME			
	SOFTWARE			
	DIELINE	Provided by client		
PRINTING	TBD			
NOTES TO PRINTER:				
-				

