



User Manual

A01-BR30 LED Lamp

LED + Wi-Fi Range Extender

Features

- Install like any other light bulb. Easy to setup and enjoy the extended Wi-Fi signal coverage evenly.
- Supports two Wi-Fi network mode: Access Point (AP) / Repeater
- Two build-in antennas for high throughput data exchange rate of maximum 300Mbps
- Compatible with most smart phones, tablets and computers that support Wi-Fi IEEE 802.11b/g/n standard at 2.4GHz.
- Remote LED lights ON/OFF and dimming control individually or by group
- Download the free Boost Android or iOS App to explore even greater functionality

Box Contents

- One A01-BR30 Bulb
- User Manual
- Limited Written Express Warranty

Product Specifications

- Power Supply: 120V AC, 60Hz, 0.11A (Typ.)
- Lamp Socket: E26 (US Version)
- Power Consumption: 12W (LED+Wi-Fi Repeater)
- Power factor: 0.85 (Min.)

- Operating Temperature: -20° C ~ +40° C
- Store Temperature: -40° C ~ +70° C
- Operating Humidity: 10% ≤ RH ≤ 95%, Non condensation
- Atmospheric Pressure: 86kPa ~ 106kPa
- Colour: Neutral White
- Dimensions: 5.32" (H) x Φ 3.74" (Dia.)
- Weight: 11.82oz (approx.)

LED Lights

- Power: 8.2 Watts
- Luminance: 700 lumens
- Light Beam Angle: 115 degrees
- Colour Temperature: 2700K - Warm White
- CRI: 80
- Dimming: Yes (Do not use with external or outside dimmers)

Wi-Fi Extender

- Wi-Fi Standard: IEEE 802.11b/g/n
- Wi-Fi Transmitter Frequency Range: 2.412 - 2.484 GHz
- Power: 1.8 Watts (Standby), 2.8 Watts (Full load)
- 2T2R MIMO wireless technology
- Security Mode: 64/128 bit WPA-PSK/WPA2-PSK, WPA/WPA2
- Encryption Type: WEP64/WEP128/TKIP/AES
- Wi-Fi Transmitter power:
 - @ 802.11b: +20dBm (Max.)
 - @ 802.11g: +18dBm (Max.)
 - @ 802.11n: +15dBm (Max.)
- Wi-Fi Receiver power:
 - @ 802.11b: -89dBm
 - @ 802.11g: -81dBm
 - @ 802.11n: -71dBm
- Distance Range between Router and A01-BR30 Bulb: 115 feet (near line of sight)

© 2014 SENGLED, Incorporated. All rights reserved. Boost by SENGLED is a trademark of SENGLED, Incorporated, registered in the United States and other countries. Specifications are subject to change without notice. Apple, iPhone, iPad, iPad mini and iPod touch are trademarks of Apple Inc., registered in the U.S. and other countries. Other Trademarks and trade names are the property of their respective owners.

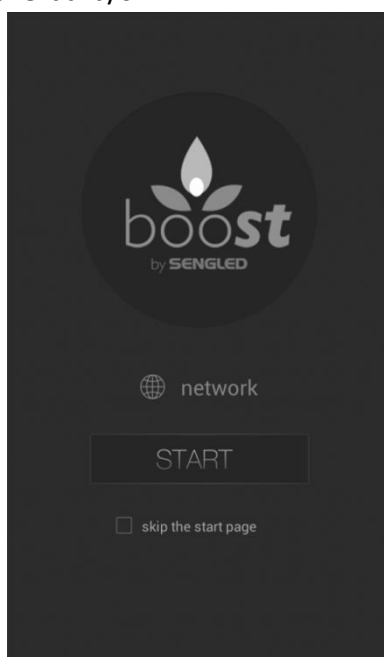
INSTALLATION INSTRUCTIONS

WARNING - TO REDUCE THE RISK OF ELECTRIC SHOCK, DO NOT REMOVE THE BACK COVER OR TAKE APART. THERE ARE NO SERVICEABLE PARTS INSIDE.

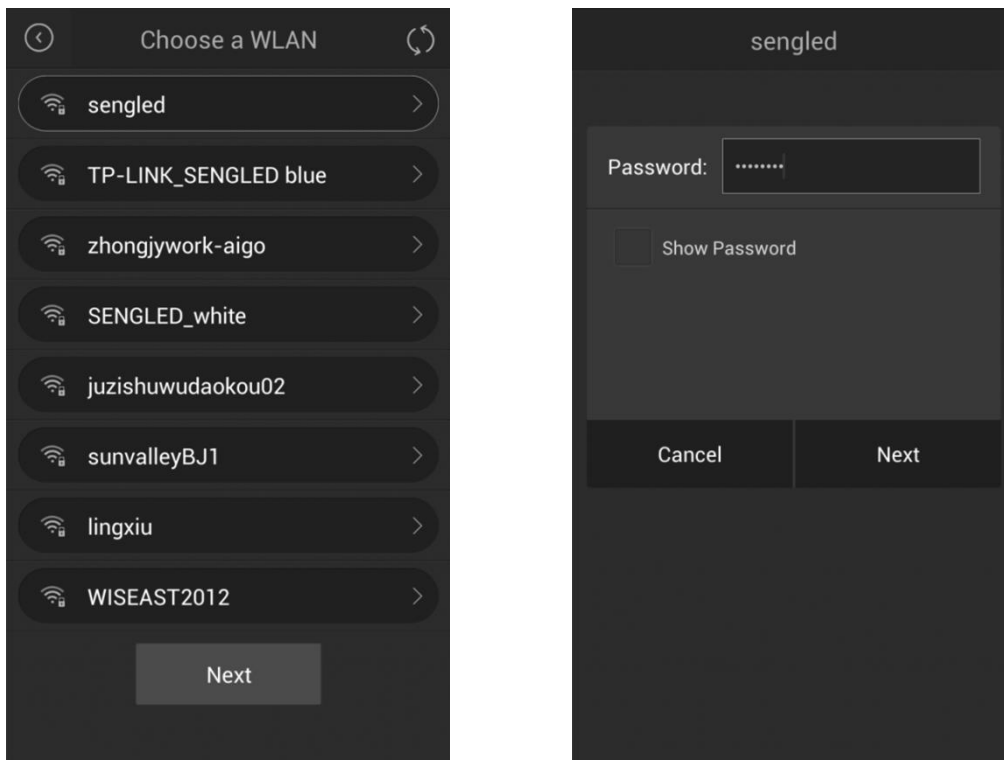
1. Before installing the Boost into an E26 light bulb socket, turn the light switch to the OFF position. (DO NOT USE WITH EXTERNAL OR OUTSIDE DIMMERS).
2. Screw the bulb into an E26 socket and turn the power on.
3. On the portable smart device (e.g. smartphone or tablet), make sure WLAN is turned on and has been connected to the wireless router with a proper passport.
4. Search for the “boost by Sengled” for corresponding operating system, download and install it on a portable smart device:
Get App from Google Play Store for Android Devices;



5. Launch the boost by Sengled application, and a 'Welcome' page appears. At the beginning, press the "network" tab to initialize boost A01-BR30 bulb's configuration. After that, click the “START” button to enter the configuration and control interface of the bulb/s.

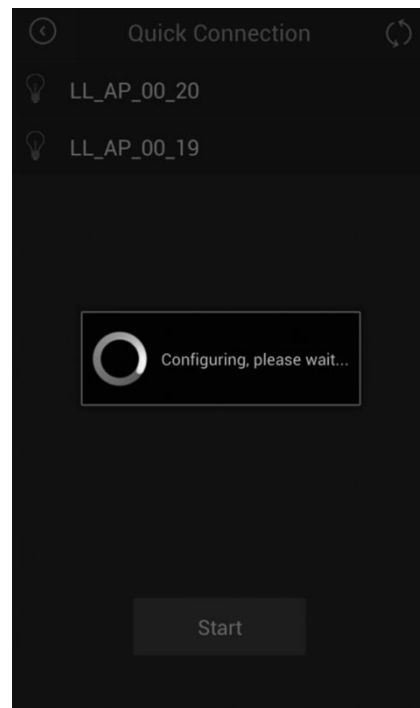
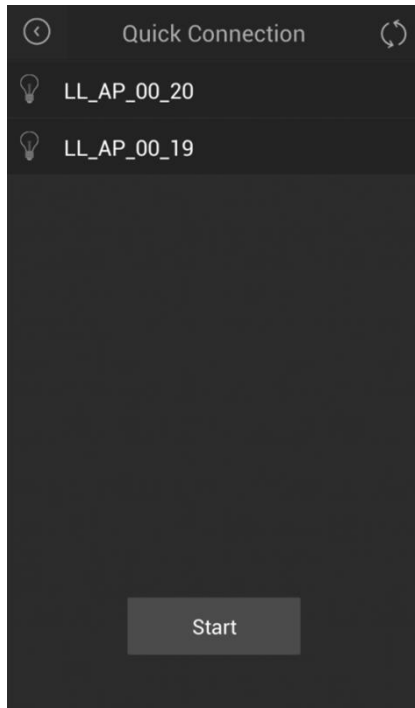


- The App will search and list out nearby available wireless router/s automatically. Choose one of the routers as the root router. Type in the Access Password and press “Next” to move forward.

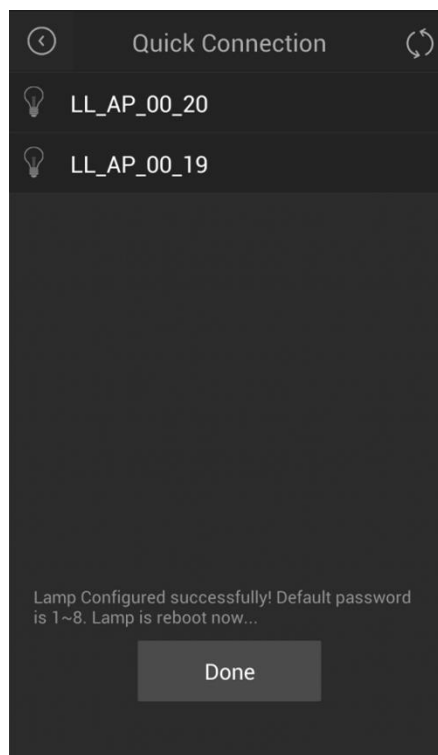


- The App will also search and list out nearby available boost A01-BR30 bulb/s. The default SSID of the bulb is “SENGLED_AP”. (ATTENTION: Figure shows below, SSID Name of "LL_AP_00_**" only for engineering samples demo).

Press the “Start” tab for configuring all nearby available boost A01-BR30 bulbs. If the root router is encrypted, the initialized bulb is also encrypted with a default password of "12345678". Input the bulb password and wait for the configuration process complete.

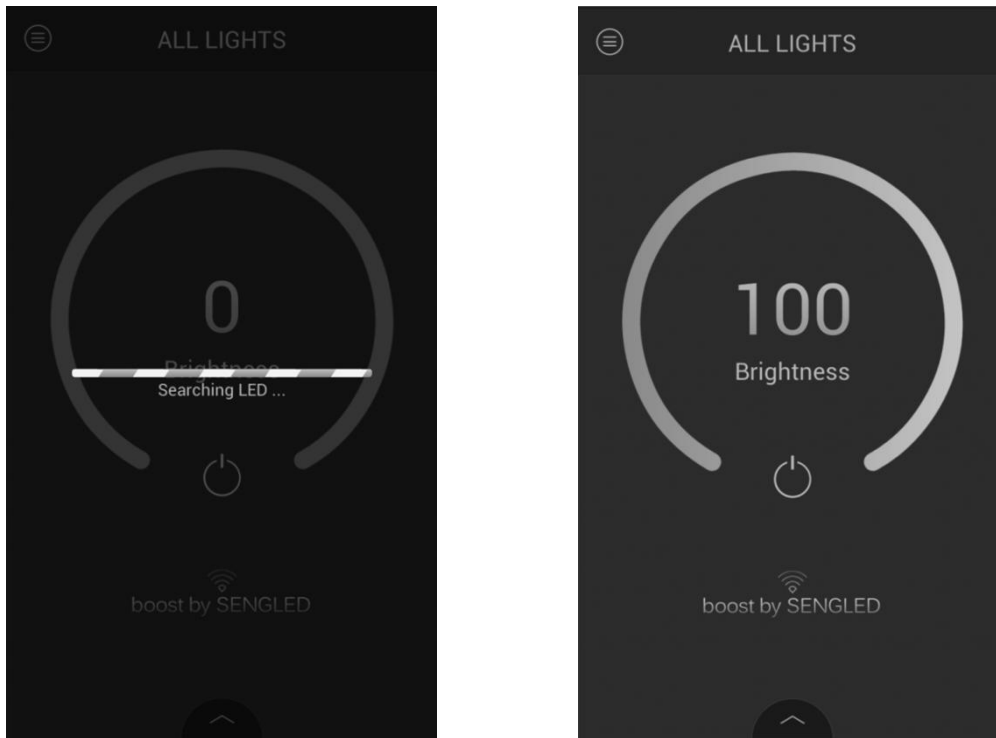


8. After the process of bulb network configuration has been succeeded, boost A01-BR30 bulb/s will reboot (THIS PROCESS MAY TAKE FEW MINUTES, PLEASE BE PATIENCE). Press “Done” and return to the home page.

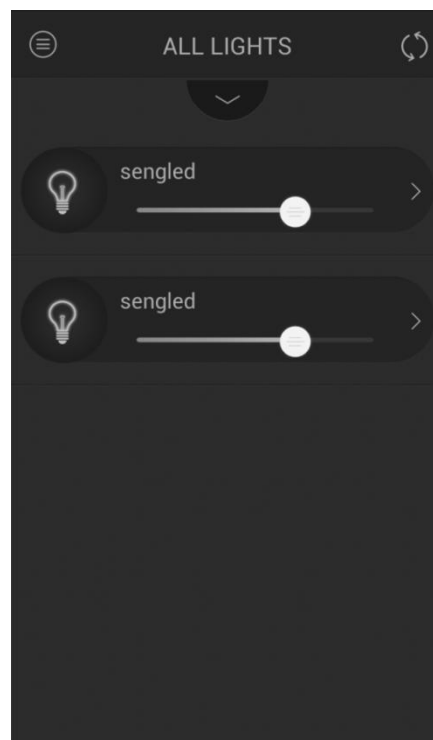


9. The App begins to search the configured online LED bulb/s. (SINCE THE BULB REBOOT PROCESS MAY TAKES FEW MINUTES, PLEASE BE PATIENCE AND

REFRESH THE LIST FROM TIME TO TIME). After searching out all configured bulbs, the interface shows a Main Control Page. This can be used to control the overall LED light dimming and ON/OFF.

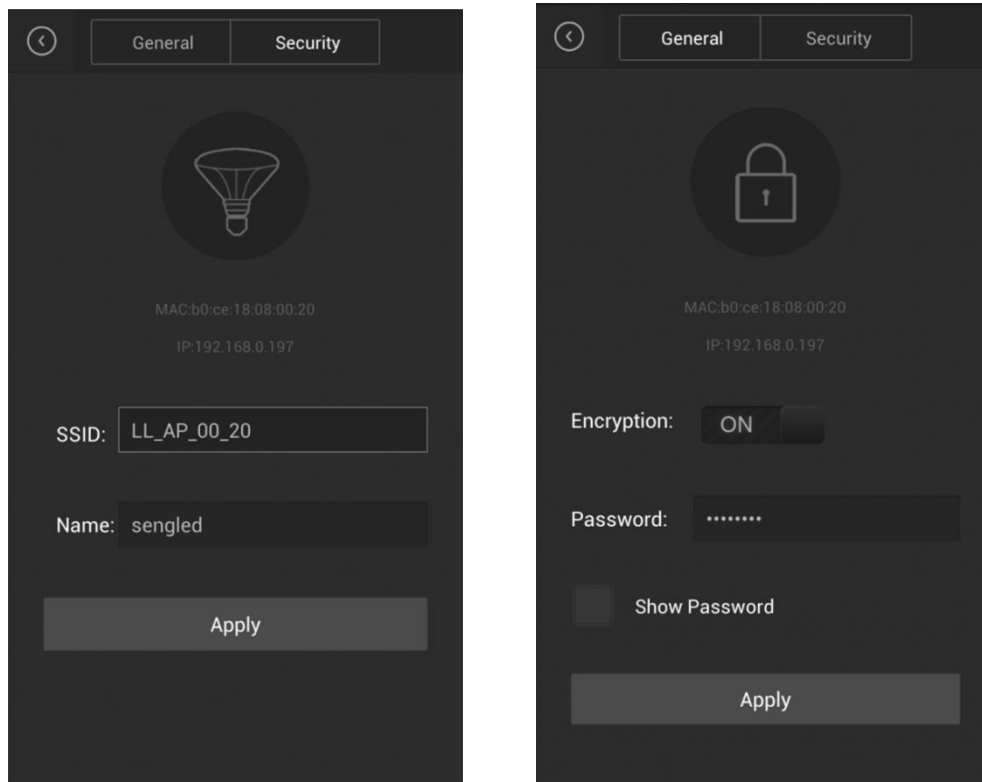


10. To control the LED bulb individually, pull up the bulb list at the bottom, each bulb can be dimmed separately. Click the arrow on the right, and it goes to the bulb wireless network configuration page.

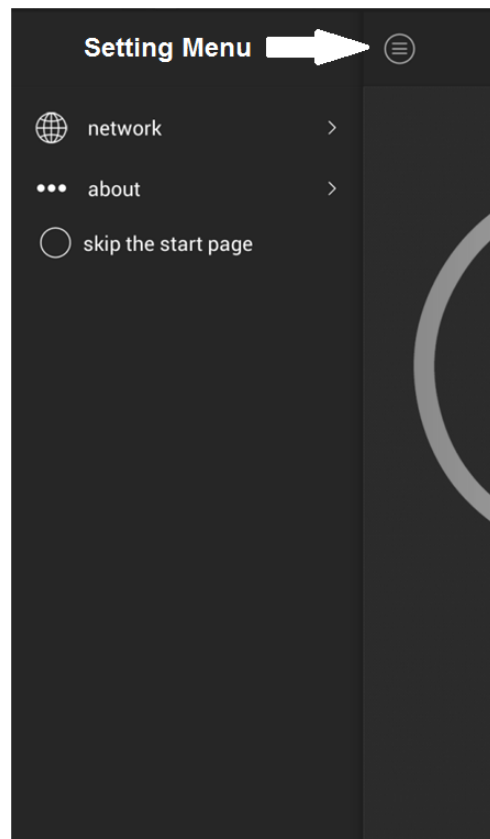


11. Under the 'General' tab, the wireless network parameters of the bulb are listed (such as MAC address, IP Address). User can change bulb's SSID (listed on the WLAN table, visible name to public), or Name (listed on the boost by Sengled App) to a more meaningful name, such as "Living Room AP" or "Living Room Wi-Fi". Press "Apply" to active such changes.

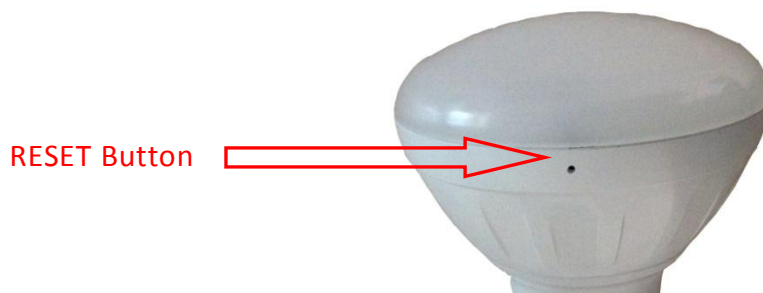
Under the 'Security' tab, user can change the Encryption Mode, or change the bulb access Password. Press "Apply" to active such changes.



12. If re-configuration of the wireless network is needed, press the Setting Menu button on the Main Control Page and click the "Network" tab. Re-initialize all bulbs on the network and start setup wizard again.



13. If the bulb cannot be detected by the portable smart devices or App in any ways, user can press the physical RESET button to reset the configuration of the bulb (in the middle of the LED lens), as shown below.



IMPORTANT SAFETY INSTRUCTIONS



- Read and keep these safety instructions.
- Heed all warnings contained within these instructions.
- Please follow all user manual instructions when installing the product.
- Clean SENGLED product only with a dry towel.
- This Product is intended for indoor use only.
- Do NOT use this product outdoors.
- Do NOT get this product wet and do NOT use near any water source.
- The product should not be exposed to dripping or splashing liquids of any kind.
- Do not install the product near any heat sources, such as heater, radiators, stove, heat registers or other apparatus that produce heat.
- Ensure that the product is stable and secured in place during installation. If the product is dropped or falls out of the light socket, it may cause bodily harm.
- If the product is dropped or falls out of the light socket, it may be damaged. Please check the product for any visible damage.
- To reduce the risk of electric shock, do NOT remove the back cover or take apart. There are no serviceable parts inside.
- To prevent product failure, the bulb should only be installed in operating environments.
- Do not block any ventilation openings on the product.
- Never push any objects into the openings or slots on the product. Doing so may create an electric shock or fire hazard.
- Maintain sufficient distance around your product for sufficient ventilation, do not put anything within at least 6 inches of lightbulb socket.
- For best protection against lightning, unplug the product from its power source during a storm.
- Only use accessories specifically recommended by the manufacturer.
- Refer all servicing to qualified SENGLED service technician.
- Servicing is required when the product:
 - 1) has been damaged in any way;