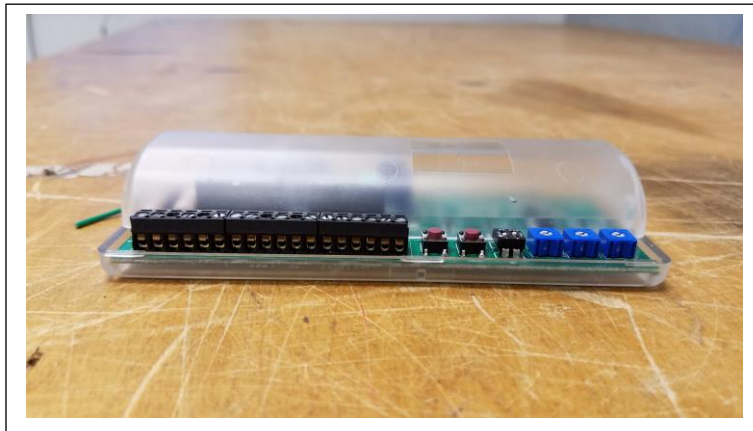
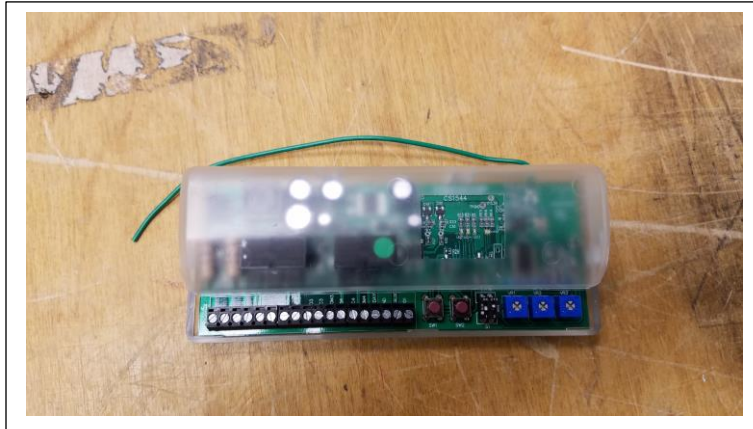


## PHOTOGRAPHS: EXTERNAL BEA Incorporated, Br2-900

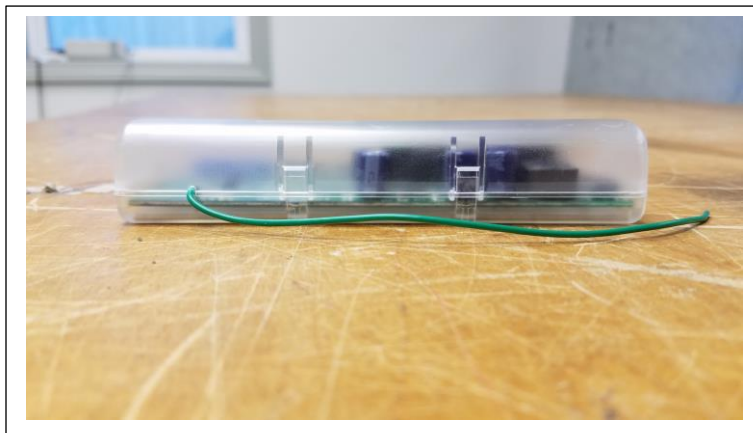
Note: Original prototype of product had the BEA internal nickname of "900P" – "P" for a Premium version of the 10RD900. As the functionality changed, it became a logic module with 900 MHz receiver capability and was changed to Br2-900 (part number 10BR2900).





Order Number: F2LQ9346

Client: BEA Incorporated  
Model: Br2-900





Order Number: F2LQ9346

Client: BEA Incorporated  
Model: Br2-900

