



SwingTracker User Guide

Model: DKST02
User Guide

PACKAGE CONTENTS

What comes in the Box

USING YOUR SWINGTRACKER SENSOR

Attach SwingTracker Sensor to your Bat

Turn On Your Sensor

Pair your Sensor

Remove your Sensor from the Charging Mount

Charge your Sensor

Check Battery Life and Power

SWINGTRACKER APP

Download the Mobile App

Create an Account

Setting Load Position

Start a Swing Session

SWINGTRACKER SWING MEASURES

SENSOR CARE INSTRUCTIONS

Moisture

Storage

Temperature Sensitivity and Storage

Technical Specifications

SUPPORT

Customer Support

Return Policy and Warranty

Compliance and Certifications

Symbol Definitions

Disposal and Recycling Information

Compliance Statement

IMPORTANT PLEASE READ CAREFULLY BEFORE USING YOUR SWINGTRACKER™ SENSOR

This User Guide contains important safety, handling and warranty information, as well software license information for your SwingTracker sensor. Please read carefully before using your sensor.

Failure to follow these safety instructions could result in fire, electric shock or other personal injury and/or damage to your SwingTracker sensor or other property.

- When you perform a repetitive activity, such as swinging a bat, you may experience occasional discomfort or fatigue. Consult a physician if issues

persist.

- Your SwingTracker sensor contains sensitive electronic components. Do not attempt to modify or repair your SwingTracker sensor yourself. Disassembling your sensor will void the manufacturer's warranty.
- The SwingTracker sensor contains small parts and is a choking hazard. It is not appropriate for children under the age of three.
- Your SwingTracker sensor is splash proof. However, do not use your sensor in rain or submerge under water.
- Do not overstretch the sensor strap. It is only intended for use with the SwingTracker sensor.
- Unplug the USB power cable and discontinue use if it has become damaged or has been exposed to rain, liquid or excessive moisture.

PACKAGE CONTENTS

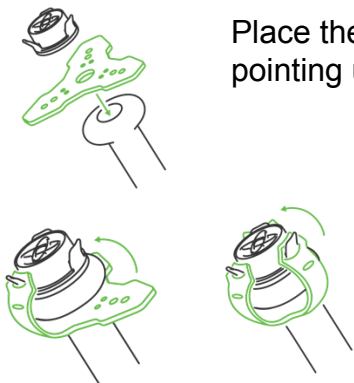
What comes in the Box

- Sensor
- Sensor Mount
- Sensor Strap
- Charging Station
- Storage Pouch

Works with the free SwingTracker iOS App

USING YOUR SWINGTRACKER SENSOR

Attach SwingTracker Sensor to your Bat



Place the end of your bat on a firm surface with the knob pointing upward. Stretch the round hole in the center of the sensor strap over the knob. Position the sensor mount on top of the bat knob. Hold the sensor mount in place with one hand.

Pull one of the strap ends over a sensor mount wing, using the top hole in the strap. Pull each of remaining two strap ends on the respective sensor mount wing.

Confirm that the sensor is firmly secured by nudging it. If the sensor mount is loose, you can secure the mount using the second hole at the top of the strap.

Your SwingTracker sensor should be attached to your bat on the knob end only using a SwingTracker strap. Do not use any other mechanism to attach your sensor to your bat; doing so will void the manufacturer's warranty.

Turn On Your Sensor

With the sensor attached, tap the bottom of bat on the ground twice to turn on the sensor. The light will begin to flash quickly. When you pair your sensor under Settings on your device, the light will flash slowly.

The sensor will also automatically turn off after a few minutes of inactivity.

Pair your Sensor

You will need to pair the SwingTracker sensor to your iOS device to collect data.

- Go to Settings > Bluetooth
- Enable Bluetooth in the Settings Menu, if it is not already on.
- Select the "SwingTracker" sensor.

Once paired, your app will automatically connect with the sensor for future use when the sensor is charged and on.

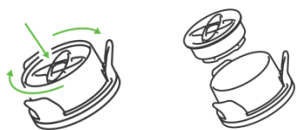
If you do not see SwingTracker in the device list

- Confirm that the sensor is charged. If it is not, go to the "Charging your Sensor" section
- Check that it is not connected to another nearby iOS device.
- Confirm SwingTracker is close to the iOS device and try again.

Remove your Sensor from the Charging Mount

To remove sensor from mount, pushdown and turn the sensor counter-clockwise 1/8 turn to unlock. Remove internal sensor from sensor mount. Sensor light will change from a blinking red to a solid green light when fully charged.

Charge your Sensor



Remove the sensor from the sensor mount.



Plug the charging station into a powered USB port. Place the SwingTracker in the center of the charging station. The sensor light will change from a blinking red to a solid green light when fully charged.

Never force a charge cable into the USB port of your SwingTracker charging station. If the charge contact does not easily fit, confirm that they are properly aligned before attempting to insert again.

ONLY use the USB charging cable provided to charge your SwingTracker sensor. Diamond Kinetics is not responsible for the operation of third-party accessories.

Check Battery Life and Power

Turning The Sensor On: With the sensor attached, tap the bottom of bat on the ground twice to turn on the sensor. You will see a green light flash rapidly if not paired. The light will flash slowly when paired to an iOS device.

Determine Battery Charge: A battery indicator is listed at the top of the SwingTracker app screen when you are paired with the app collecting swing data. The sensor will blink red and app will alert you when the battery is low.

Sleep Mode: The sensor will go into sleep mode and the light will stop blinking if you stop using it for five minutes. It will automatically wake up and the green power light will turn on once the sensor is picked up.

Turning The Sensor Off: The sensor will turn off automatically if the sensor does not move for 15 minutes.

The battery will last up to 7 hours with continuous use.

SWINGTRACKER APP

Download the Mobile App

Download and install the SwingTracker app from the iOS App Store.

Create an Account

Open the SwingTracker App. Select **SIGN UP**, choose **COACH** or **PLAYER** and your skill level. Once you select continue, you can enter your profile information to customize your SwingTracker experience.

The image shows two screenshots of the Diamond Kinetics SwingTracker app's sign-up process. The left screenshot is the main sign-up screen, featuring the app's logo at the top. Below the logo is a toggle switch for 'SIGN IN' (off) and 'SIGN UP' (on). Underneath are two large circular buttons labeled 'COACH' and 'PLAYER'. At the bottom, there is a dropdown menu currently set to 'High School Softball' with a green checkmark icon. The right screenshot shows the registration form with input fields for 'first name', 'last name', 'email', and 'password'. At the bottom of this screen, there are two checkboxes: 'Allow this device to collect my swing data without signing in' and 'By continuing, I agree to the Diamond Kinetics User Agreement and Terms of Service', both of which are currently unchecked.

Setting Load Position

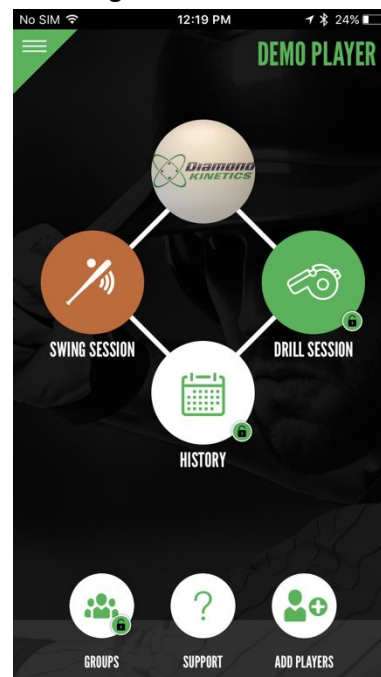
We recommend that you set the load position of your sensor before taking swing data. To do so, pair your sensor and then select **MY LOAD POSITON** from **Settings**. Follow the instructions in the app.

You should periodically reset your Load Position to get the most personalized analysis.

Start a Swing Session

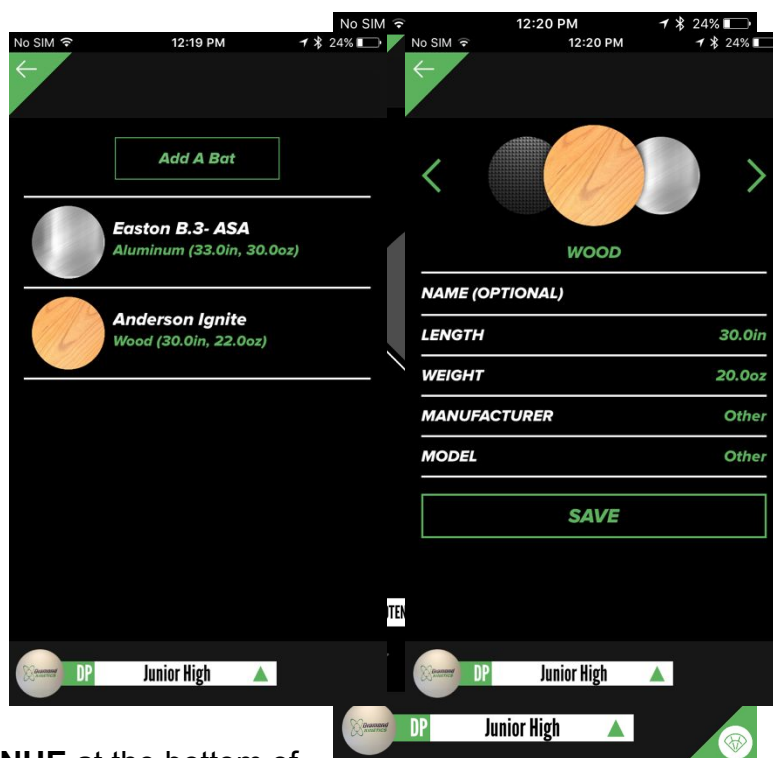
To start your first swing session, select **Swing Away** on the bottom right of the screen.

You will then be asked to provide the details of your current swing session. You must select a Bat and Load Position to take swings. The SwingTracker app will guide you to set your **Load Position**.



When selecting **Bat**, you can select an existing bat or **Add A New Bat**. Once you select all of the details of your new bat, select **Save** to use the bat in future batting sessions.
Tip: If you do not see your bat Model or Manufacturer listed, select other.

We recommend setting your standard Load Position. This will enhance the accuracy of your data.



Once entering all of the Session Setting information, select **CONTINUE** at the bottom of the Session Settings screen.

You can now Swing Away.

Your swings will automatically appear in the swing session. You can also capture swing video while taking swings by selecting **Video Capture**.

While collecting data, you can also click on a Swing and then select the right menu to view Summary, Detail, and 3D Viewer data of swings in the session.

Make sure that the person taking video is at a safe distance from hitter during the batting session.

Select **End Session** to stop collecting data for a swing session. You can view again it at any time under **History** on the **Summary** screen. You will see a diamond that represents every swing in the Swing Session.

DK Tip: Here are a few tips to capture the best data:

- ***Get to your natural load point***
- ***Pause the bat for a second or two before taking a swing***
- ***Do not move the bat excessively when capturing swings***

SWINGTRACKER SWING MEASURES

Your SwingTracker system measures four key metrics related to your swing - Speed, Power, Quickness and Control. These metrics are then ranked against the database of swings within your skill range.

In addition, you are able to see your Potential Exit Velocity and Potential Hitting Distance.

DK Tip: Click on the  to see detailed summaries that explain each swing metric. Click on any blue flashing light to see a tip.

SENSOR CARE INSTRUCTIONS

Moisture

The SwingTracker sensor is however significant may cause damage to your

- Do not use your
- Do not spill any food sensor.

splash-proof, exposure to water sensor. sensor in the rain. or liquid on your

If your sensor gets wet, dry it

thoroughly before

using or charging. Do not attempt to dry it with an external heat source, such as a microwave oven or hair dryer.

SwingTracker sensors that are damaged as a result of exposure to liquids are not serviceable and are not covered by the Manufacturer's Warranty.

Storage

Store your SwingTracker sensor in a cool, dry place at room temperature using the provided Protective Case.

Temperature Sensitivity and Storage

Avoid exposing your SwingTracker sensor to extreme temperatures. Operate your sensor between 32° and 95° F (0° and 35° C).

Avoid dramatic changes in temperature or humidity when using your SwingTracker sensor, as condensation may form within the sensitive electronic components of your sensor.

Technical Specifications

The SwingTracker App works on iPhone 4 or above or an iPod touch (Gen 3 or above).

Works for PCs and Macs for viewing data on the following Supported Browsers: Internet Explorer (10 and above), Google Chrome, Firefox, Safari.

SUPPORT

Videos, FAQs, troubleshooting and other support is available at diamondkinetics.com/support and in the Settings section of your app.

Customer Support

You can contact Customer Support at support@diamondkinetics.com

Return Policy and Warranty

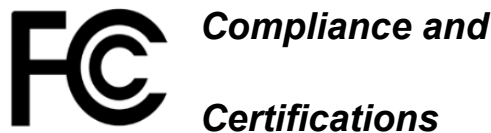
Diamond Kinetics provides a 30-day money back guarantee on orders placed directly through our website. If you are not completely satisfied with your purchase we will exchange your sensor or provide a refund, subject to the following conditions:

- Returns for exchange or refund must be made within 30 days of purchase

- All returned or exchanged items must be in new condition, in their original box, and must include all packaging materials and accessories
- Refunds will be issued in the same payment form as the original purchase
- All returned products will be inspected to ensure the above conditions are met prior to issuing a refund

Returns or replacements may be subject to shipping, handling, replacement and/or restocking fees. Original shipping fees are not refundable.

Diamond Kinetics provides a 1-year manufacturers warranty. For more information visit: www.diamondkinetics.com/support



Federal Communications Commission
Model: DKST02
FCC ID: 2ABWR-DKST02

Industry Canada
Model: DKST02
IC: 12312A-DKST02

Disposal and Recycling Information

Your SwingTracker sensor should be disposed of separately from household waste. Take the sensor to a collection point designated by local authorities that accept batteries and other similar waste. Not all collection points accept products for free. The separate collection and recycling of your product at the time of disposal will help conserve natural resources and ensure that it is recycled in a manner that protects human health and environment.

Compliance Statement

This device complies with part 15 of the FCC Rules. Operation is subject to the following two conditions: (1) this device may not cause harmful interference, and (2) this device must accept any interference received, including interference that may cause undesired operation.

Note: This equipment has been tested and found to comply with the limits for a Class B digital device, pursuant to part 15 of the FCC Rules. These limits are designed to provide reasonable protection against harmful interference in a residential installation. This equipment generates, uses and can radiate radio

frequency and, if not installed and used in accordance with the instructions, may cause harmful interference to radio communications. However, there is no guarantee that interference will not occur in a particular installation. If this equipment does cause harmful interference to radio or television reception, which can be determined by turning the equipment off and on, the user is encouraged to try to correct the interference by one or more of the following measures:

- Reorient or relocate the receiving antenna.
- Increase the separation between the equipment and receiver.
- Connect the equipment to an outlet on a circuit different from that to which the receiver is connected.
- Consult the dealer or an experienced radio/TV technician to help.

U.S. Patents: 7,021,140 and 7,234,351