



# QUICK START



## How Evermind Works

Evermind includes three sensors — you can monitor one, two, or three appliances, depending on individual habits. The sensors connect to the Evermind network using built-in wireless Internet. No home Internet connection is required.

When a monitored appliance is switched on or switched off, Evermind recognizes the act of switching as an indication of activity. If an appliance is left on or off for longer than expected, Evermind can detect these periods of switching inactivity and provide alerts in times of potential distress.

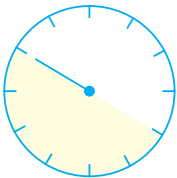
## Setting up Evermind

Evermind is designed to be set up easily. Simply plug in each sensor, followed by the appliance you'd like to monitor. The only tool required is a pen or pencil to make note of the the appliance being monitored and its location in the home. For your convenience we've included a pencil in the box.

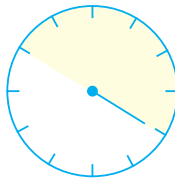
**FIRST**

## Choosing Appliances to Monitor

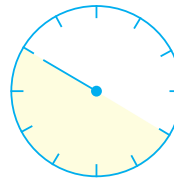
Think of how appliances in the home are used on a daily basis. Try to choose appliances that are switched on and off daily and used when at home. A typical setup might include an appliance used in the morning (coffee maker), a second used around midday (TV, microwave), and a third used in the evening (bedside lamp).



**MORNING**  
**4 AM - 10 AM**



**MIDDAY**  
**10 AM - 4 PM**



**EVENING**  
**4 PM - 10 PM**



# Choosing Appliances to Monitor

## EVERMIND WORKS BEST WITH THE FOLLOWING APPLIANCES:

- coffee makers
- televisions
- lamps
- microwave ovens
- toasters or toaster ovens
- electric kettles
- stereos or radios
- hair dryers
- washing machines
- garage door openers

Evermind does not currently support space heaters, computers, mobile phones, or tablets, is not compatible with most night-lights and low-power lamps with LED bulbs, and its sensors should not be used with outlets controlled by wall switches.

The choice of which appliances to monitor will depend on the unique situation in the home. Even in homes where not all monitored appliances are used every day, or where only one or two appliances can be monitored, Evermind can still provide daily confirmation of activity or inactivity.

## SECOND

# Installing Sensors in the Home

### SENSOR #1



In addition to monitoring an appliance, Sensor #1 connects all three sensors to the Evermind notification system. Sensor #1 should be plugged in first and must remain plugged in for Sensors #2 and #3 to function.

### **Determine the first appliance you want to monitor, and then follow these steps:**

- 1) Unplug the appliance from the outlet.
- 2) Plug Sensor #1 into the outlet, then plug the appliance into Sensor #1.
- 3) The light on the front of the sensor will blink while it connects to the Internet, and then become solid when connected. Check to see that Sensor #1 glows with a solid blue light.
- 4) Make note of appliance name and room name in the space provided on the back of this guide. You will need this to complete your system setup on the Evermind website.

## THIRD

### Installing Additional Sensors (Optional)

#### SENSOR #2 & #3



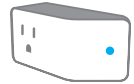
Follow the same steps to set up Sensors #2 and #3. The lights on these sensors may blink while first connecting to Sensor #1 and will remain solidly lit when connected. Remember to make note of the appliance name and room name on the back of this guide for each sensor in the space provided. You will need this to complete your system setup on the Evermind website.

LAST



After installation, visit [manage.evermind.us/register](https://manage.evermind.us/register) and use your System ID located on the back of this guide to complete the setup process.

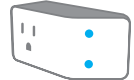
## SENSOR #1



Appliance Name

Room Name

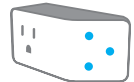
## SENSOR #2



Appliance Name

Room Name

## SENSOR #3



Appliance Name

Room Name

**SYSTEM ID:**

Visit [manage.evermind.us/register](https://manage.evermind.us/register) to complete the setup process.

**NEED HELP?**

Email: [support@evermind.us](mailto:support@evermind.us) / Give us a call! 10 a.m. – 6 p.m. CST / Mon. – Fri.

**844-EVERMIND (844-383-7646)**