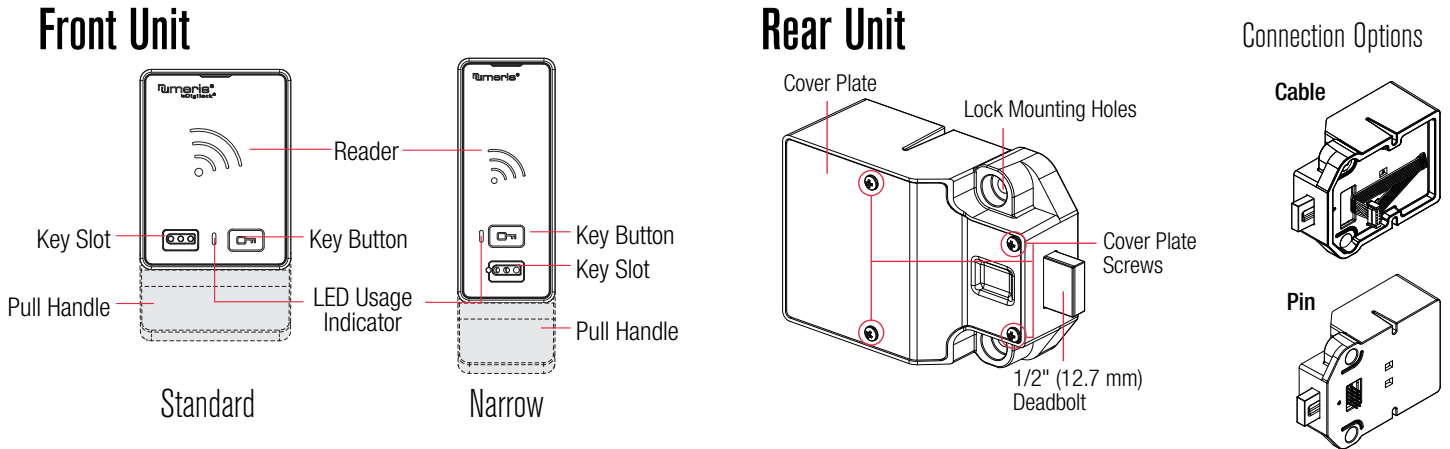


Aspire locks with a touch RFID interface are operated by an RFID credential or by an ADA compliant User Key. Manager credentials (Manager Key or RFID) provide management access and/or external power. Programming is accomplished via a Programming Key unique to the lock system. An optional mobile application tool simplifies lock system management and provides audit trail.

Lock Parts



RFID Credentials



Keys

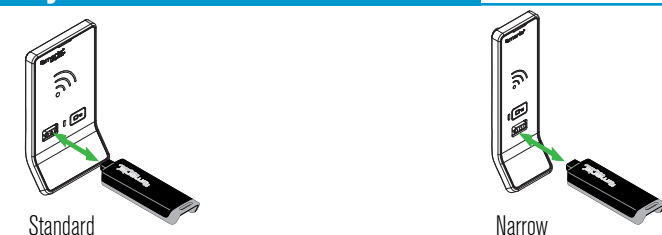


	User Key	Manager Key ¹	Programming Key ²
Operates the lock	•	•	•
Overrides user access		•	•
Allows management inspection		•	•
Provides external power		•	
Programs manager credentials to the lock			•

¹ Up to 6 manager credentials (Manager Key or RFID) may be programmed to each lock. If managed with the optional Mobile App, up to 250 manager credentials may be programmed to each lock.


² 1 Programming Key allowed per lock system.

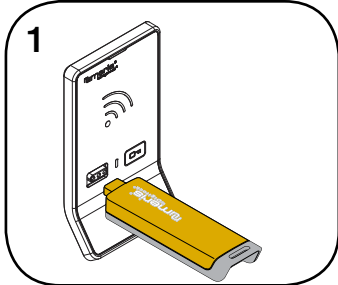
Key Insertion



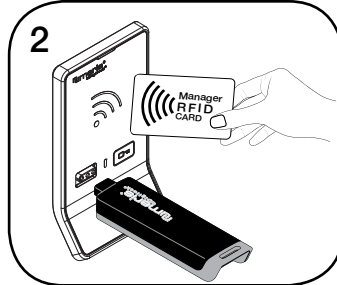
Numeris logo must face up on standard and narrow body locks.

Setup

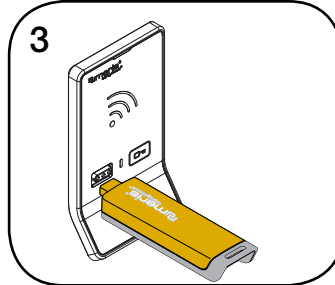
Locks are shipped with factory default settings (only operates by pressing ). Each lock must be setup to operate with a Programming Key and manager credentials (Manager Key or RFID).



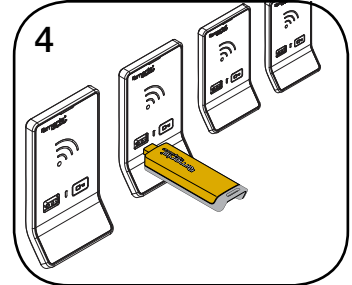
1
Insert the Programming Key.
A two-tone beep will be heard and the LED and Reader will turn on.



2
Insert one Manager Key or present one Manager RFID at a time.
A two-tone beep will be heard for each manager credential programmed.



3
Insert the Programming Key.
A two-tone beep will be heard and the LED and Reader will turn off.

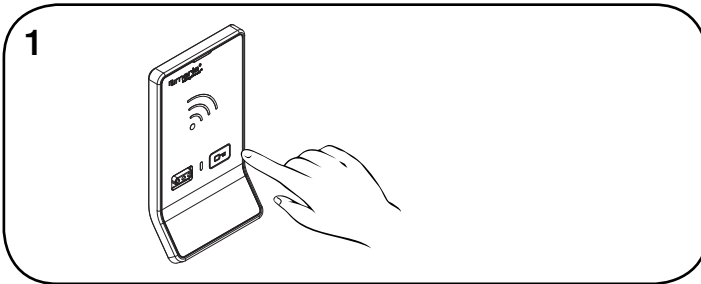



4
Repeat above steps for each lock or follow instructions to [Express Register Manager Credentials](#) to setup all the locks.

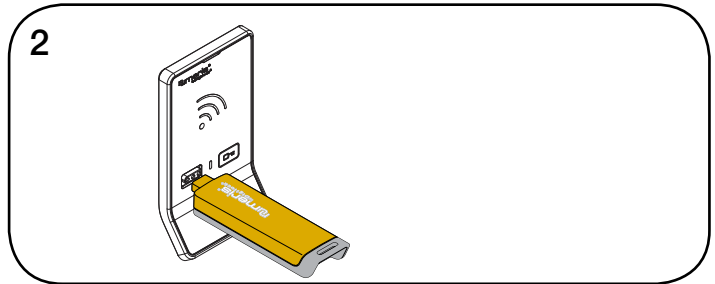
Programming Instructions

Express Register Manager Credentials

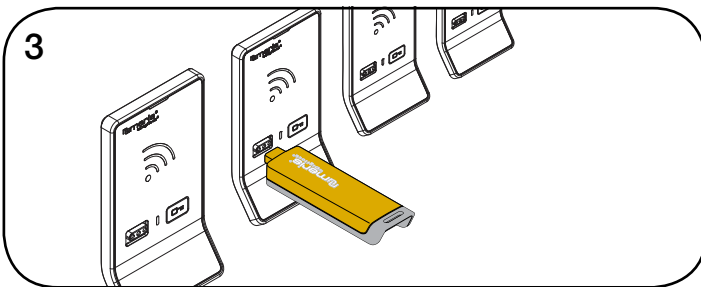
The Programming Key can quickly program multiple locks to operate with the same manager credentials.



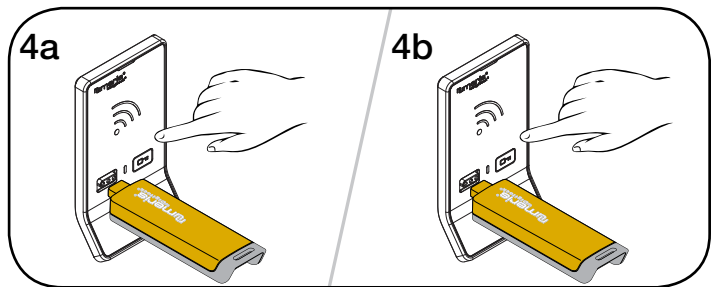
1
Go to a lock already programmed to operate with the manager credentials.
Touch and hold  for 10 seconds (a two-tone beep will be heard after 5 seconds followed by 2 sets of two-tone beeps after 10 seconds) then release. The LED will flash.

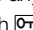
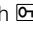


2
Insert the Programming Key.
Two sets of two-tone beeps will be heard and the LED will turn off.



3
Insert the Programming Key to program each lock to operate with the same manager credentials.
Two sets of two-tone beeps will be heard and the LED will flash once to indicate successful programming.



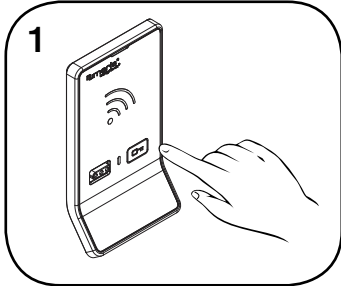
4a End express registration mode.*
Go to any programmed lock.
4b Touch  then insert the Programming Key.
Touch  then insert the Programming Key again to return the bolt to the original position.

*The Programming Key will continue to function in express registration mode until it is used to operate a lock.

Programming Instructions

Add Manager Credentials

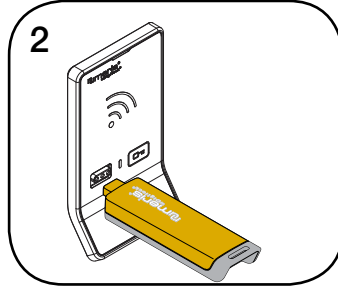
Manager credentials can be programmed to the locks at any time.



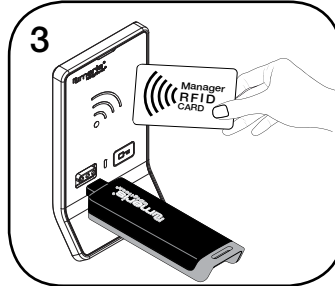
Go to a lock requiring additional manager credentials.

Touch and hold **M** for 5 seconds (a two-tone beep will be heard after 5 seconds) then release.

The LED will flash and the Reader will turn on.

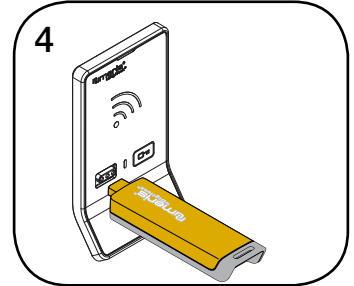


Insert the Programming Key.
A two-tone beep will be heard.



Insert each additional Manager Key or present each Manager RFID one at a time.

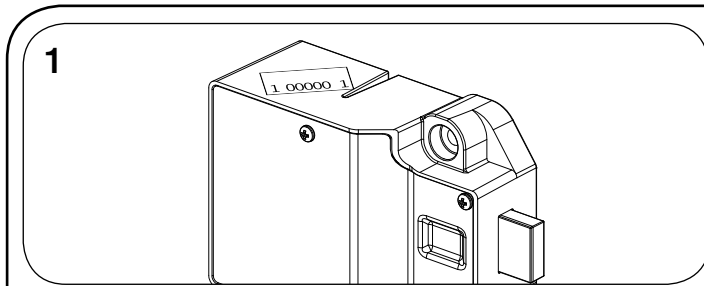
A two-tone beep will be heard for each manager credential programmed.



Insert the Programming Key.
A two-tone beep will be heard and the LED and Reader will turn off.
Repeat above steps for each lock or follow instructions to [Express Register Manager Credentials](#) to quickly program the same manager credentials to operate multiple locks.

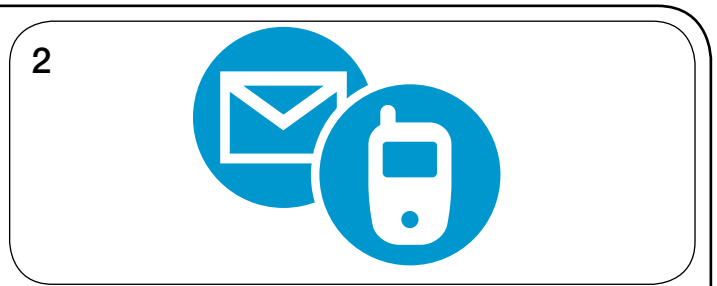
Replace Programming Key or Manager Credentials

The locks must be reprogrammed to prevent the lost/stolen Programming Key or manager credentials from operating a lock.

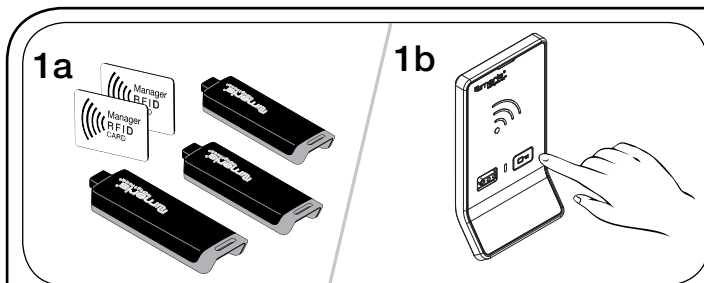


To replace the Programming Key:

Note the order or serial number (found on the lock's rear unit).

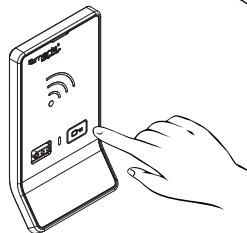


Contact Digilock Support to purchase a replacement Programming Key.



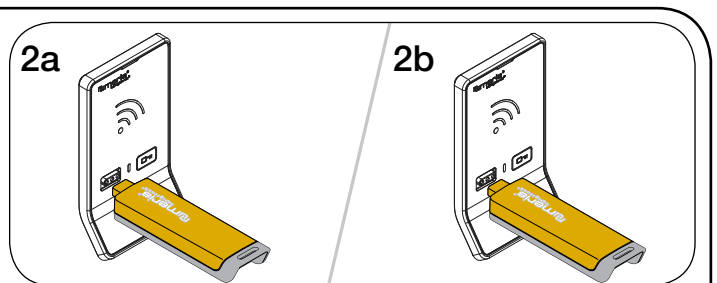
1a

1b



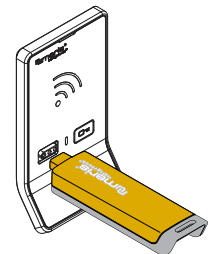
To replace Manager Credentials:

Collect all remaining and replacement manager credentials.
Go to any lock operated by the lost/stolen manager credentials.
Touch and hold **M** for 5 seconds (a two-tone beep will be heard after 5 seconds) then release.
The LED will flash and the Reader will turn on.



2a

2b

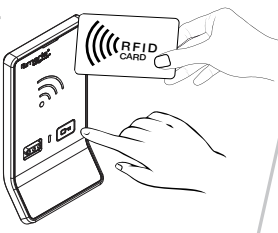


Insert the Programming Key.
A two-tone beep will be heard.
Insert the Programming Key again.
Three sets of two-tone beeps will be heard and the LED and Reader will turn off. All previously programmed manager credentials will be erased.
Follow instructions to [Add Manager Credentials](#) to program the remaining and replacement manager credentials to the locks.

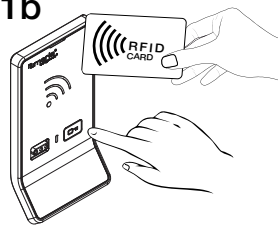
Operating Instructions - In Shared Use Functionality

In shared use functionality, the user presents an RFID or inserts any User Key to lock and the same RFID or User Key to unlock. Once unlocked, the lock is available for a different user.

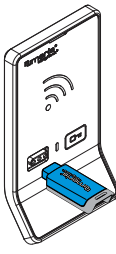
1a



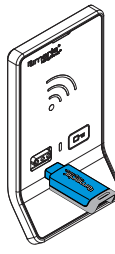
1b

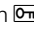
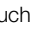


1a



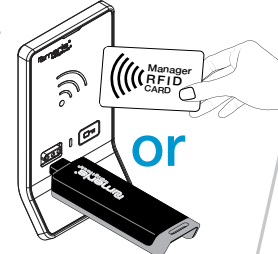
1b



Operate with an RFID
To lock: Touch  then present an RFID.
To unlock: Touch  then present the same RFID.

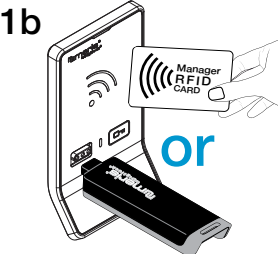
Operate with a User Key
To lock: Insert any User Key.
To unlock: Insert the same User Key.

1a




or

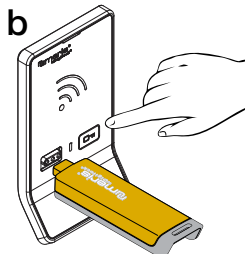
1b

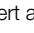
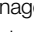


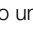
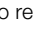
1a



1b



Operate with a Manager Credential
To unlock: Insert a valid Manager Key or touch  then present a valid Manager RFID.
To relock: Insert a valid Manager Key or touch  then present a valid Manager RFID.*

Operate with the Programming Key
To unlock: Touch  then insert the Programming Key.
To relock: Touch  then insert the Programming Key.*

*If a manager credential or the Programming Key is used to relock, the previous user credential will continue to operate the lock.

Support

Error Condition Indicators

10 rapid beeps:

The lock is binding which means that either door alignment or stored items are preventing the lock from operating. Press on the door while operating the lock. If error condition persists, contact Digilock support for assistance.

2 sets of three beeps:

The batteries are low. Replace the batteries.

Does not Unlock with the User Credential (User Key or RFID)

The lock does not recognize the user credential. For immediate access, operate with a valid manager credential.

Does not Operate with a Manager Credential (Manager Key or RFID)

The lock does not recognize the manager credential. Follow instructions to [Add Manager Credentials](#) to program the manager credential to the lock. For immediate access, operate with another valid manager credential or with the Programming Key.

Does not Operate with the Programming Key

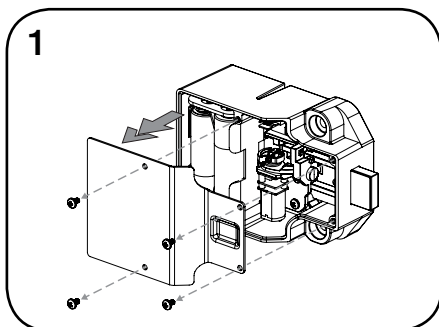
The lock does not recognize the Programming Key. If the Programming Key has been replaced, operate with the Replacement Programming Key. Contact Digilock support for additional assistance.

No Audible Feedback when is Pressed

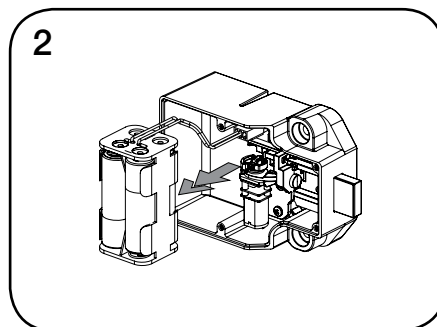
- The batteries may need to be replaced. For immediate access, operate with a valid Manager Key.
- The front unit may not be properly connected to the rear unit. Remove the lock from the door and check the connection.

Battery Replacement (shown with cable rear unit)

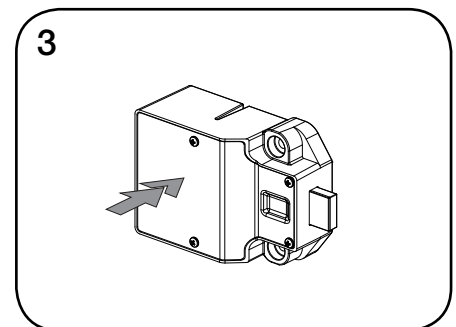
It is not necessary to uninstall the lock from the door.



1 Remove the screws and the cover plate.



2 Pull the battery pack from the rear housing. Replace with four premium alkaline AA batteries.



3 Place the battery pack back into the rear housing and screw cover plate in place.

Regulatory Information

The user is cautioned that changes or modifications not expressly approved by CompX, Timberline could void the user's authority to operate the equipment.

This device complies with Part 15 of the FCC Rules. Operation is subject to the following two conditions: (1) This device may not cause harmful interference, and (2) this device must accept any interference received, including interference that may cause undersired operation.

This equipment has been tested and found to comply with the limits for a Class B digital device, pursuant to Part 15 of the FCC Rules. These limits are designed to provide reasonable protection against harmful interference in a residential installation. This equipment generates, uses and can radiate radio frequency energy and, if not installed and used in accordance with the instructions, may cause harmful interference to radio communications. However, there is no guarantee that interference will not occur in a particular installation. If this equipment does cause harmful interference to radio or television reception, which can be determined by turning the equipment off and on, the user is encouraged to try to correct the interference by one or more of the following measures:

- Reorient or relocate the receiving antenna.
- Increase the separation between the equipment and receiver.
- Connect the equipment into an outlet on a circuit different from that to which the receiver is connected.
- Consult the dealer or an experienced radio/TV technician for help.