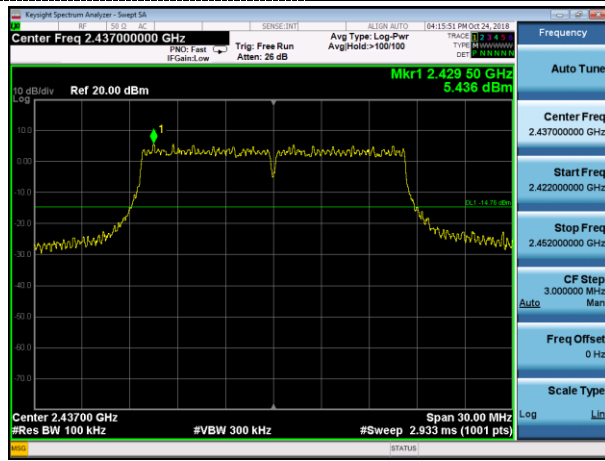
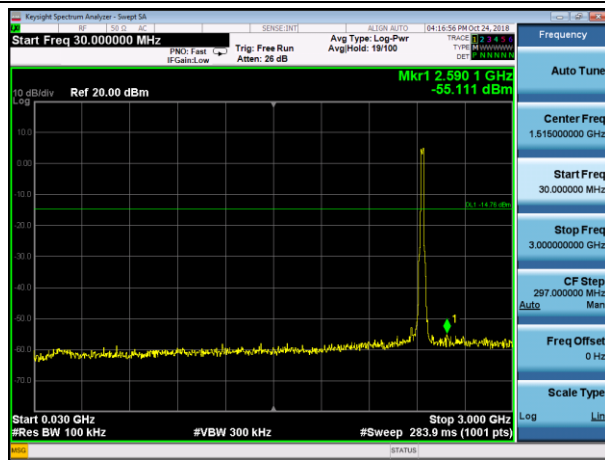


Test Mode:	802.11g	Test channel :	06
-------------------	----------------	-----------------------	-----------



Channel 06

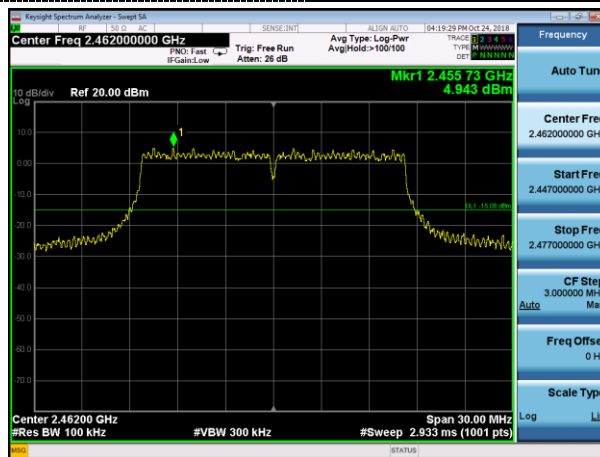


30MHz ~3GHz

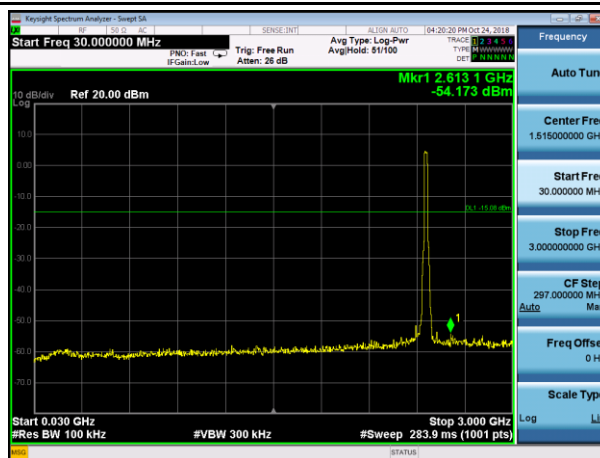


3GHz~25GHz

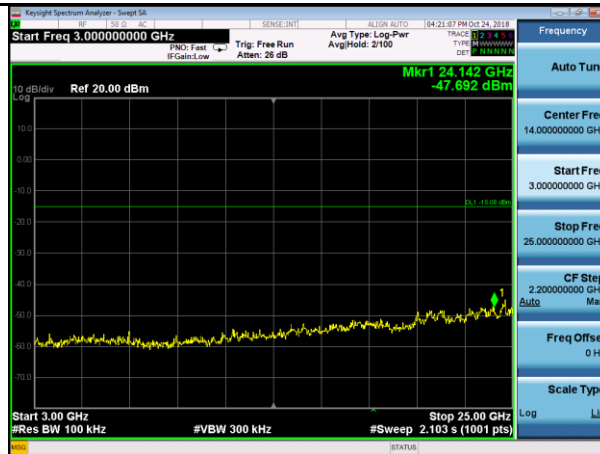
Test Mode:	802.11g	Test channel :	11
------------	---------	----------------	----



Channel 11

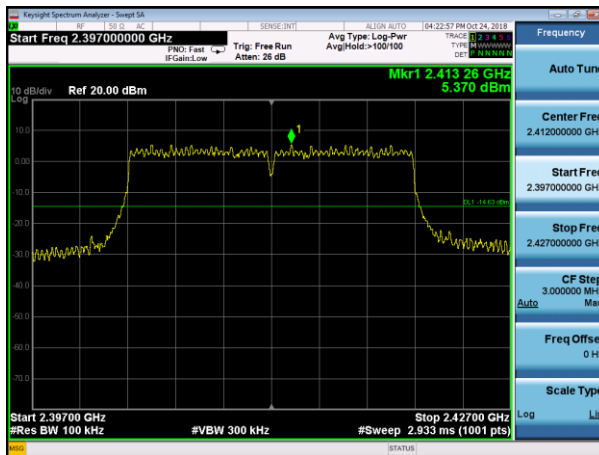


30MHz ~3GHz

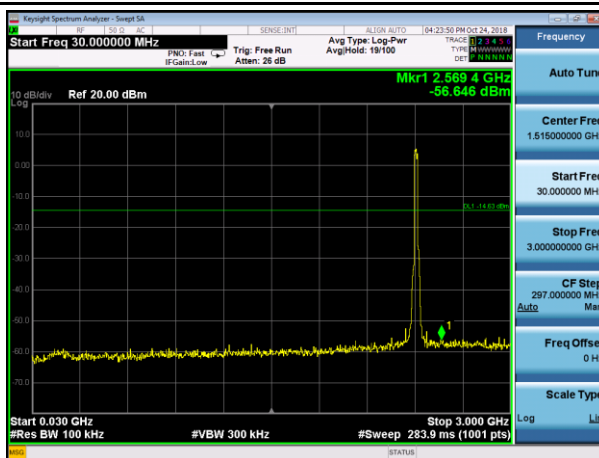


3GHz~25GHz

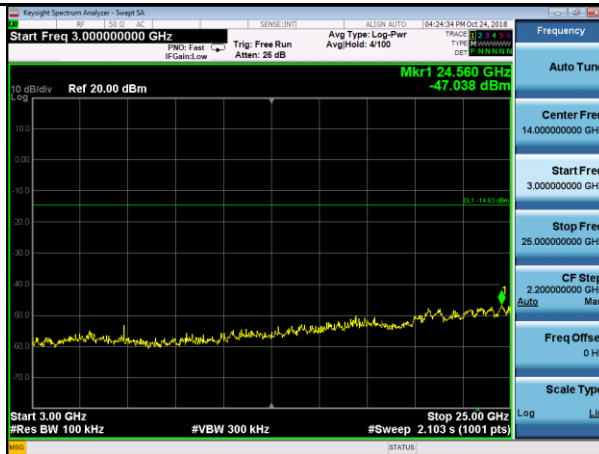
Test Mode:	802.11n HT20	Test channel :	01
------------	--------------	----------------	----



Channel 01

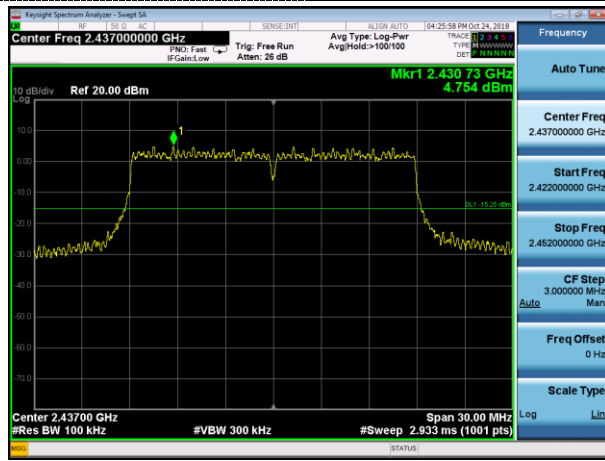


30MHz ~3GHz

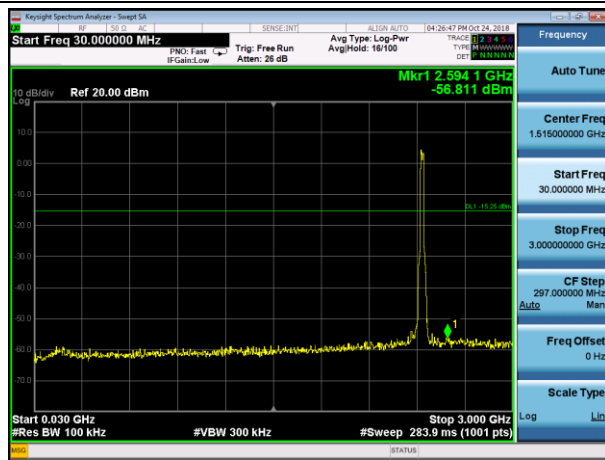


3GHz~25GHz

Test Mode:	802.11n HT20	Test channel :	06
-------------------	---------------------	-----------------------	-----------



Channel 06

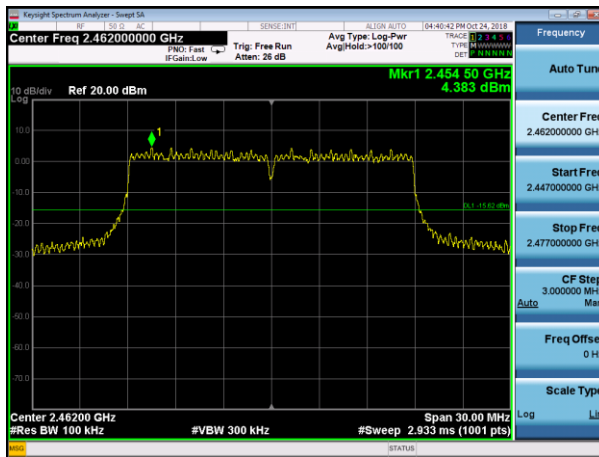


30MHz ~3GHz

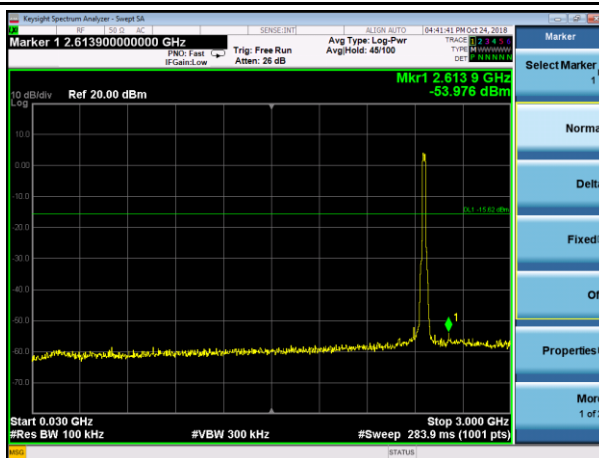


3GHz~25GHz

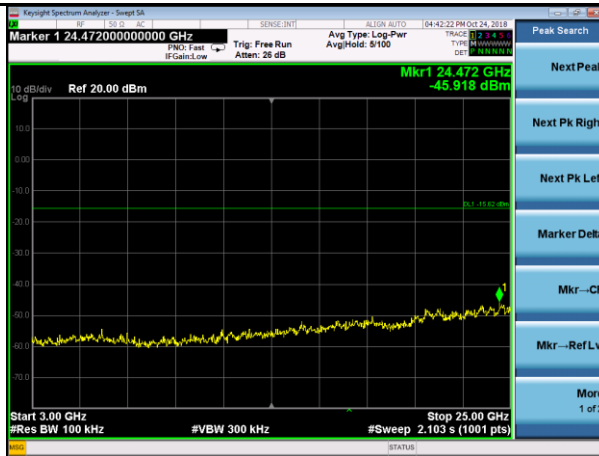
Test Mode:	802.11n HT20	Test channel :	11
------------	--------------	----------------	----



Channel 11

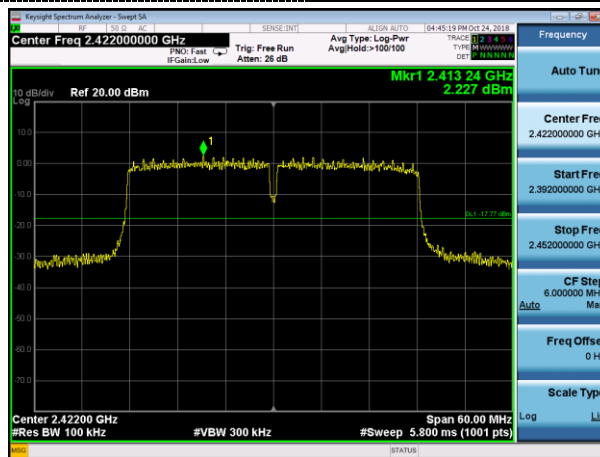


30MHz ~3GHz

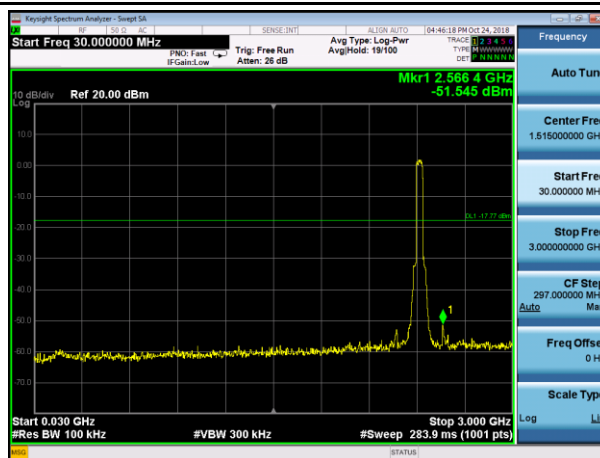


3GHz~25GHz

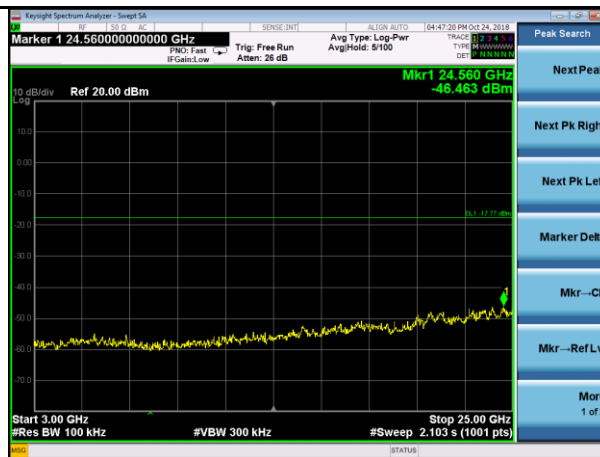
Test Mode:	802.11n HT40	Test channel :	03
------------	--------------	----------------	----



Channel 03

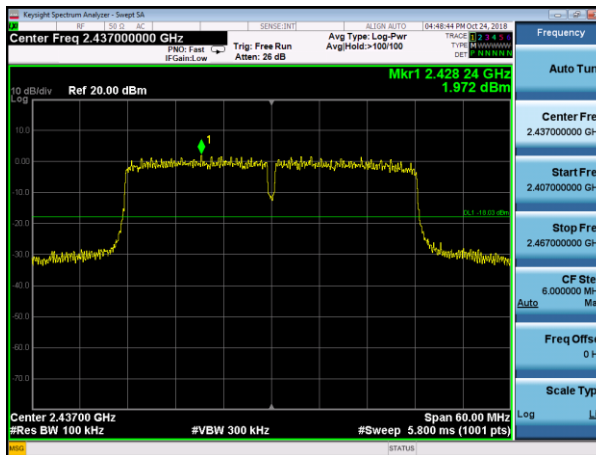


30MHz ~3GHz

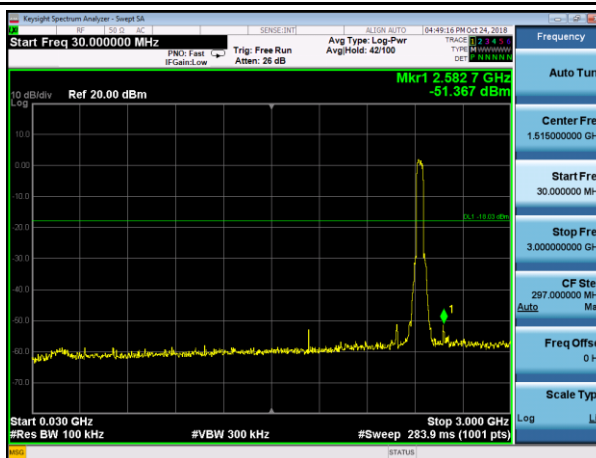


3GHz~25GHz

Test Mode:	802.11n HT40	Test channel :	06
------------	--------------	----------------	----



Channel 06

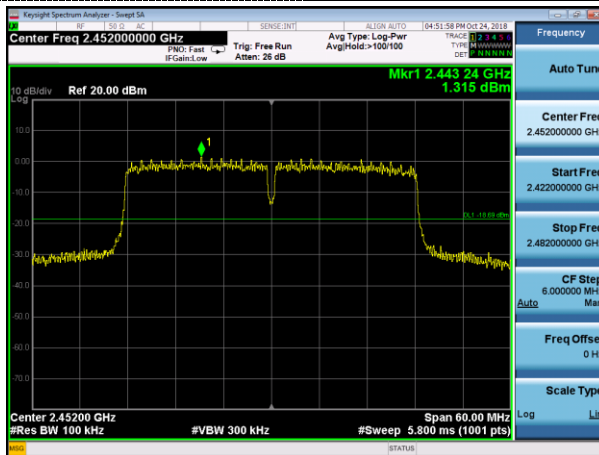


30MHz ~3GHz

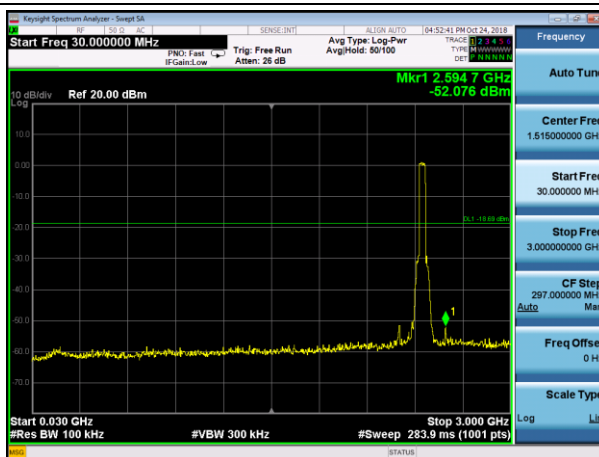


3GHz~25GHz

Test Mode:	802.11n HT40	Test channel :	09
------------	--------------	----------------	----



Channel 09



30MHz ~3GHz



3GHz~25GHz

4.8. Antenna Requirement

Standard Applicable

For intentional device, according to FCC 47 CFR Section 15.203, an intentional radiator shall be designed to ensure that no antenna other than that furnished by the responsible party shall be used with the device.

And according to FCC 47 CFR Section 15.247 (c), if transmitting antennas of directional gain greater than 6dBi are used, the power shall be reduced by the amount in dB that the directional gain of the antenna exceeds 6dBi.

Test Result

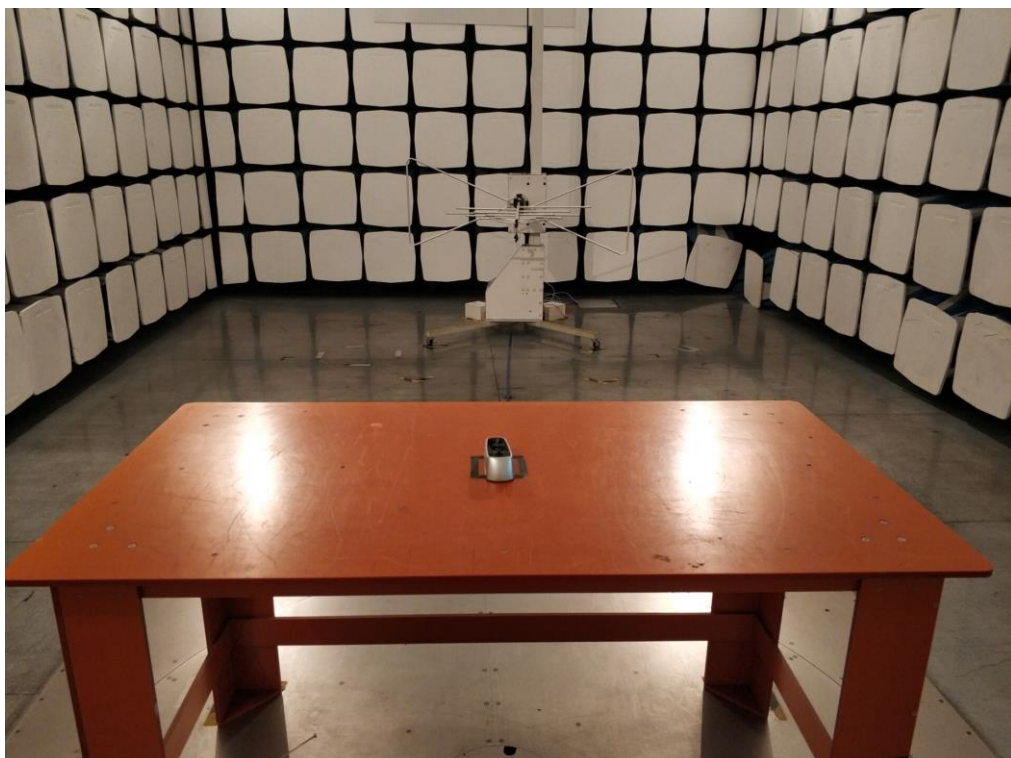
The antenna used for this product is internal Antenna and that no antenna other than that furnished by the responsible party shall be used with the device, the maximum peak gain of the transmit antenna is only 2.00dBi.

5. Test Setup Photos of the EUT

Conducted Emission Test



Radiated Emission Test

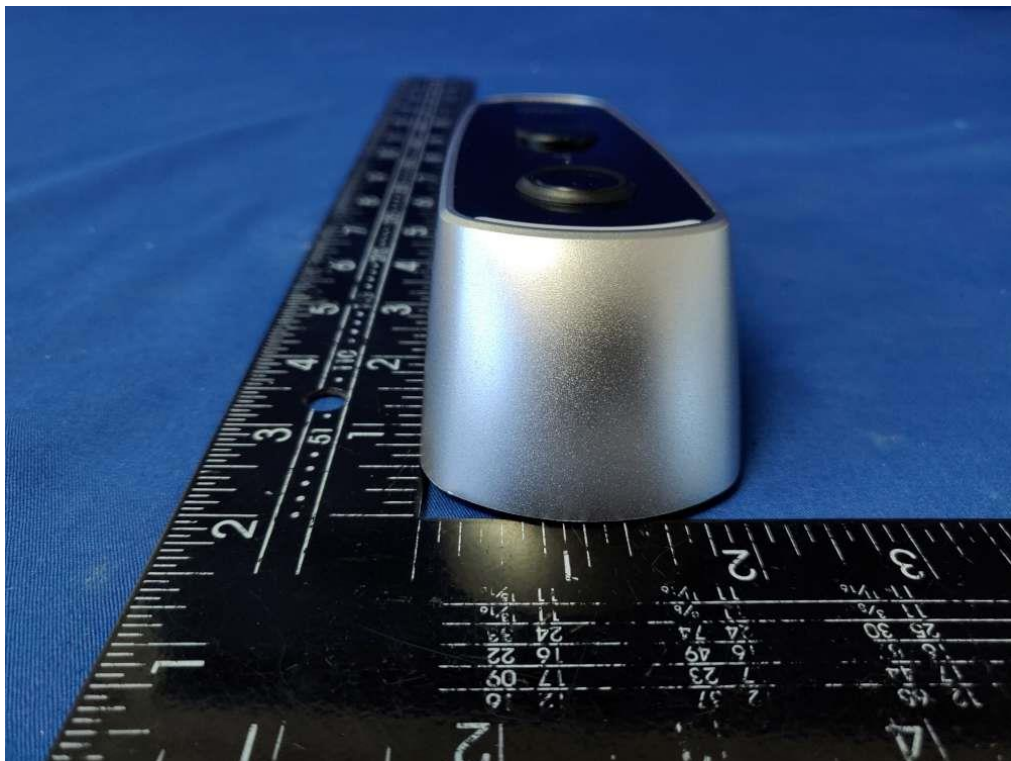
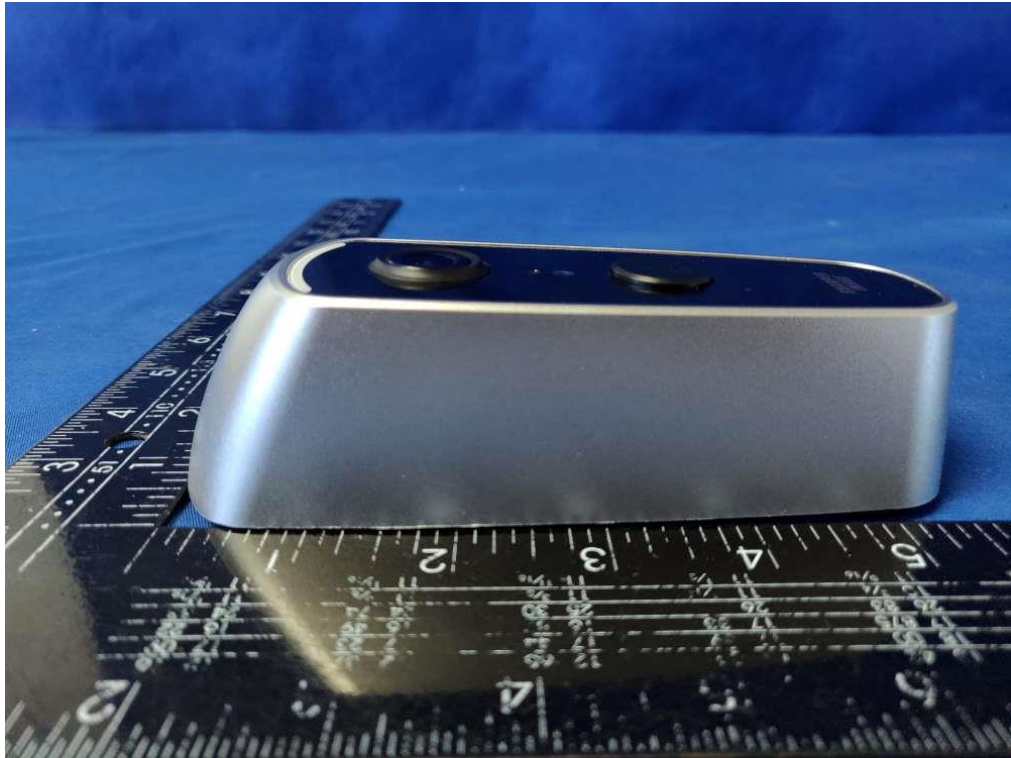




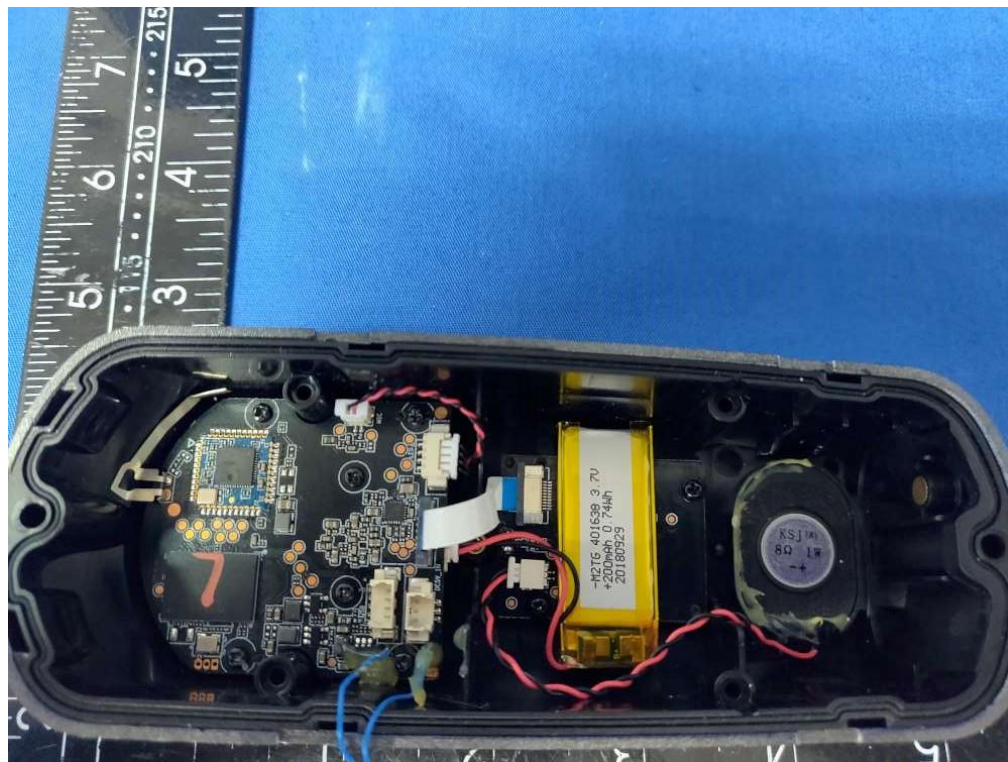
6. External and Internal Photos of the EUT

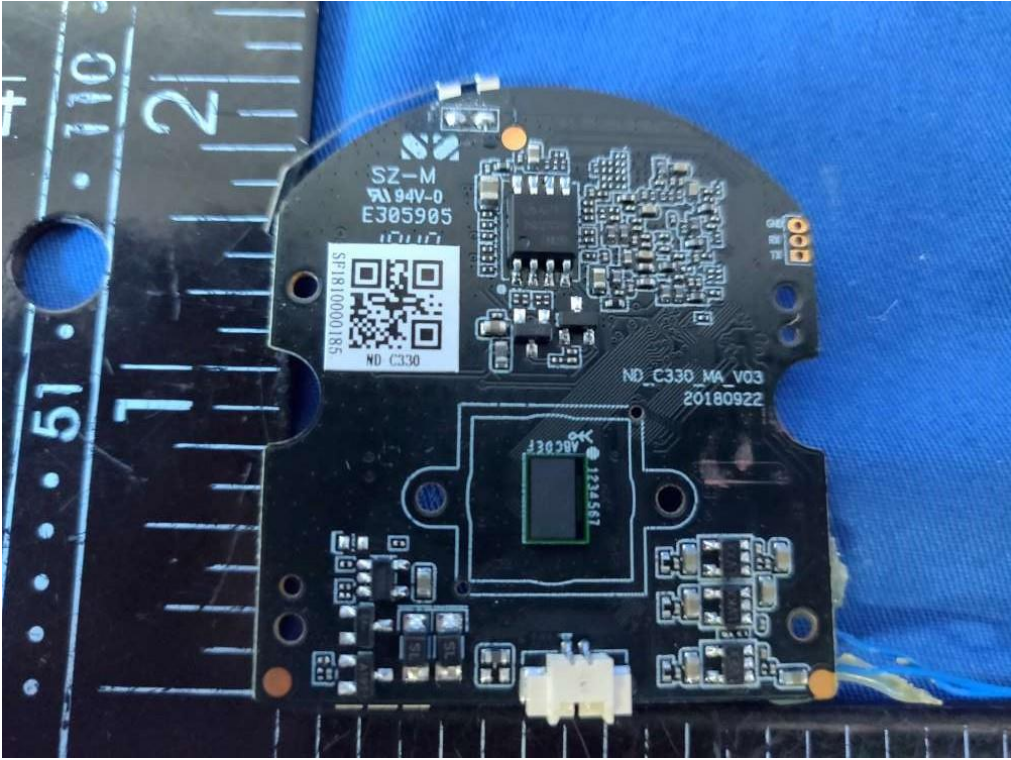
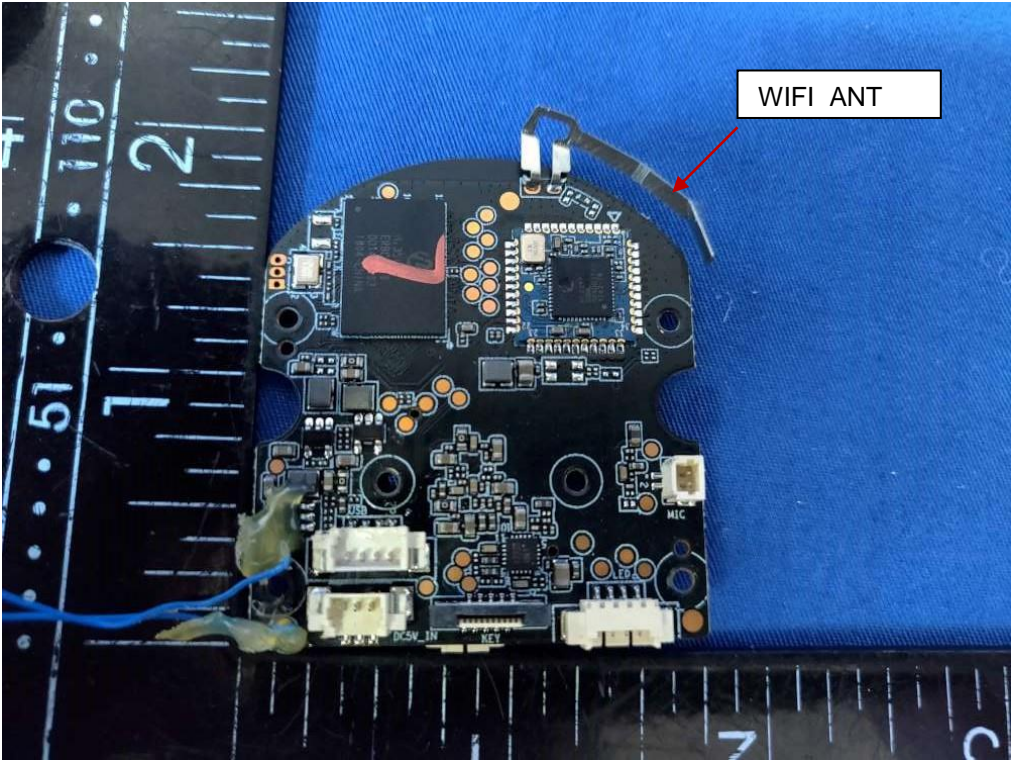


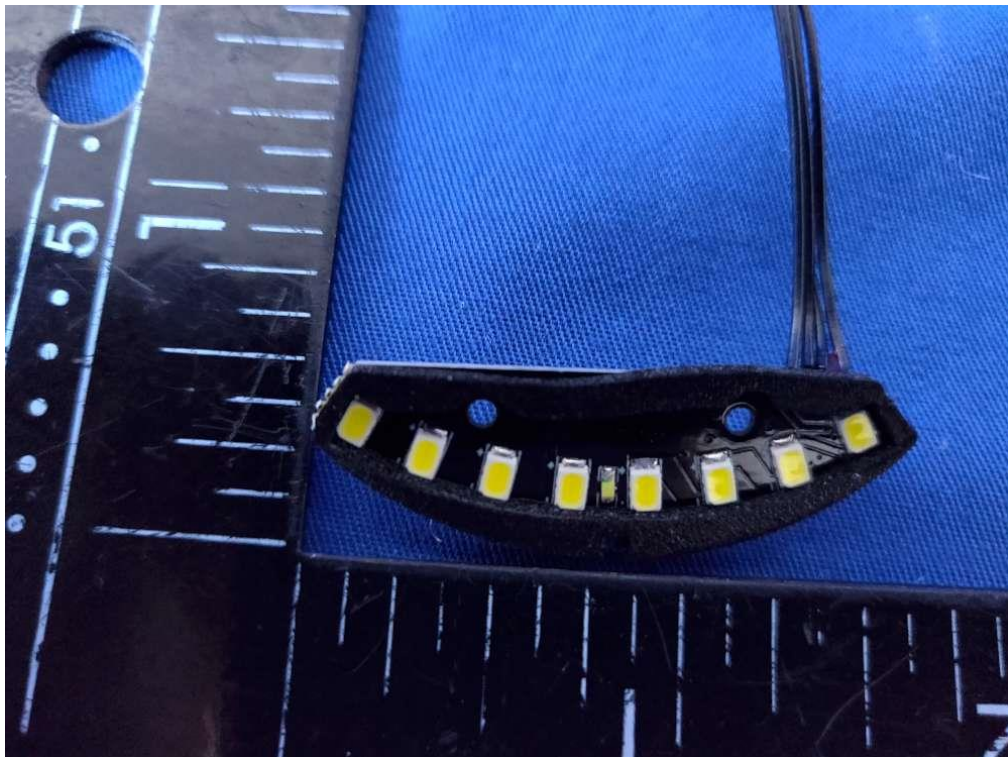
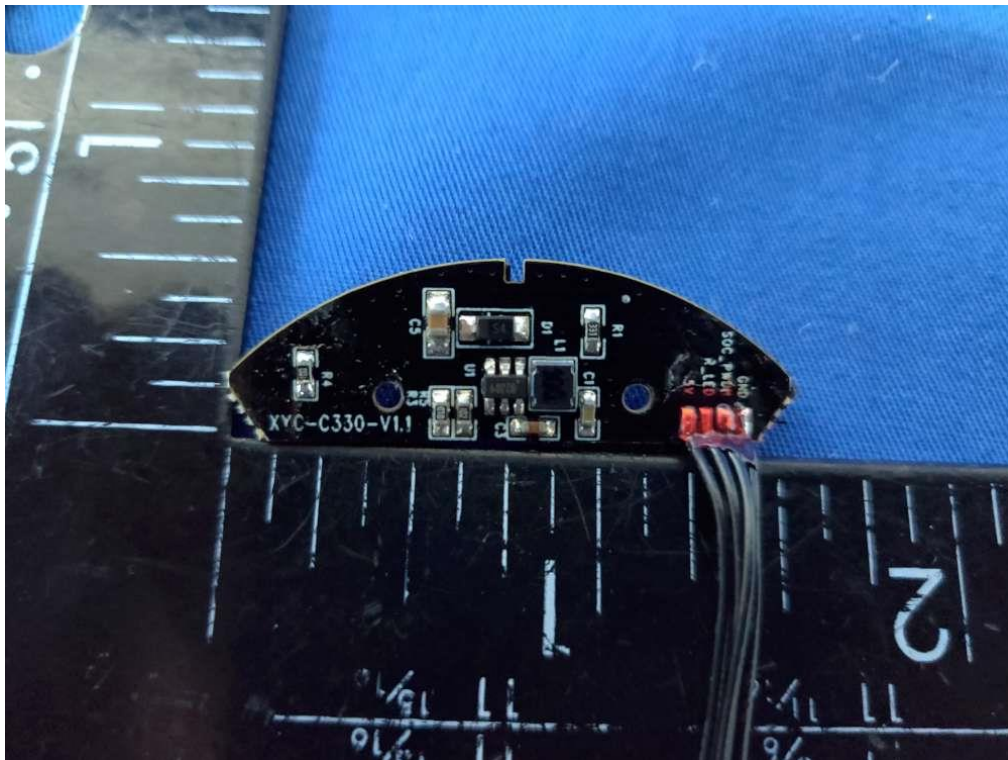


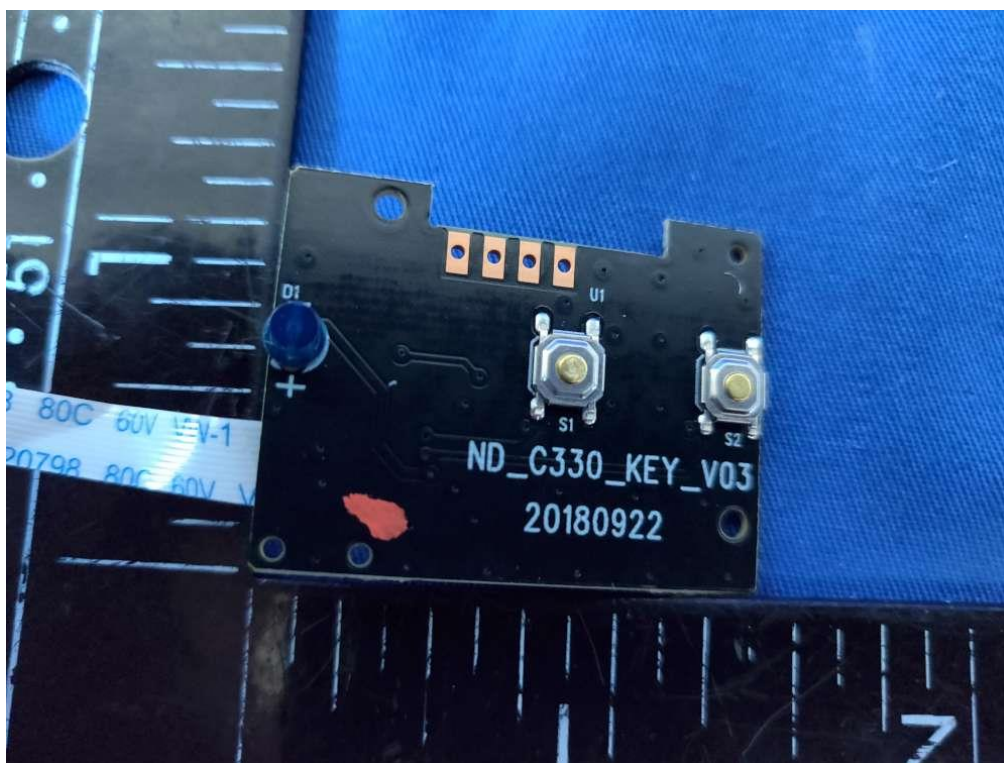
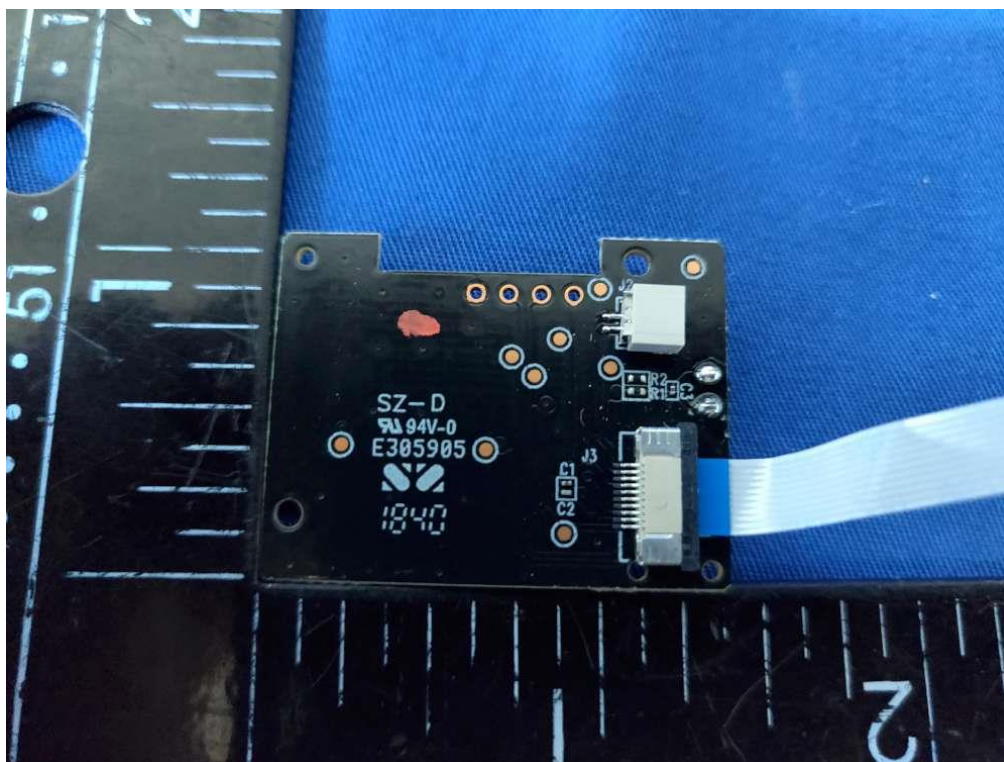


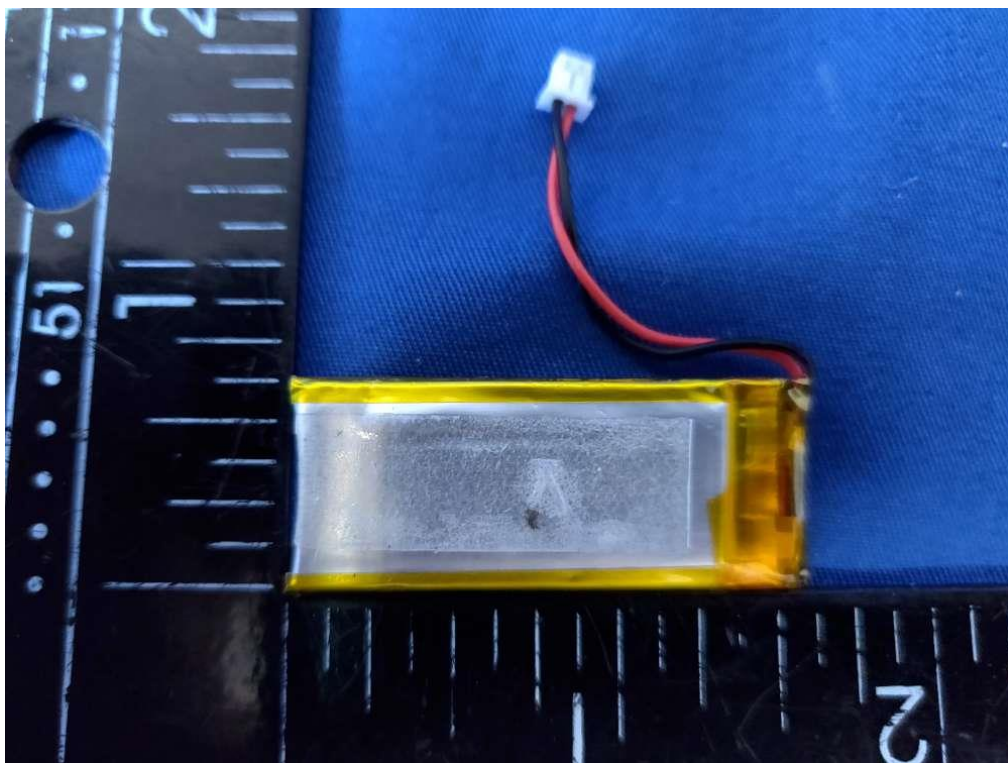
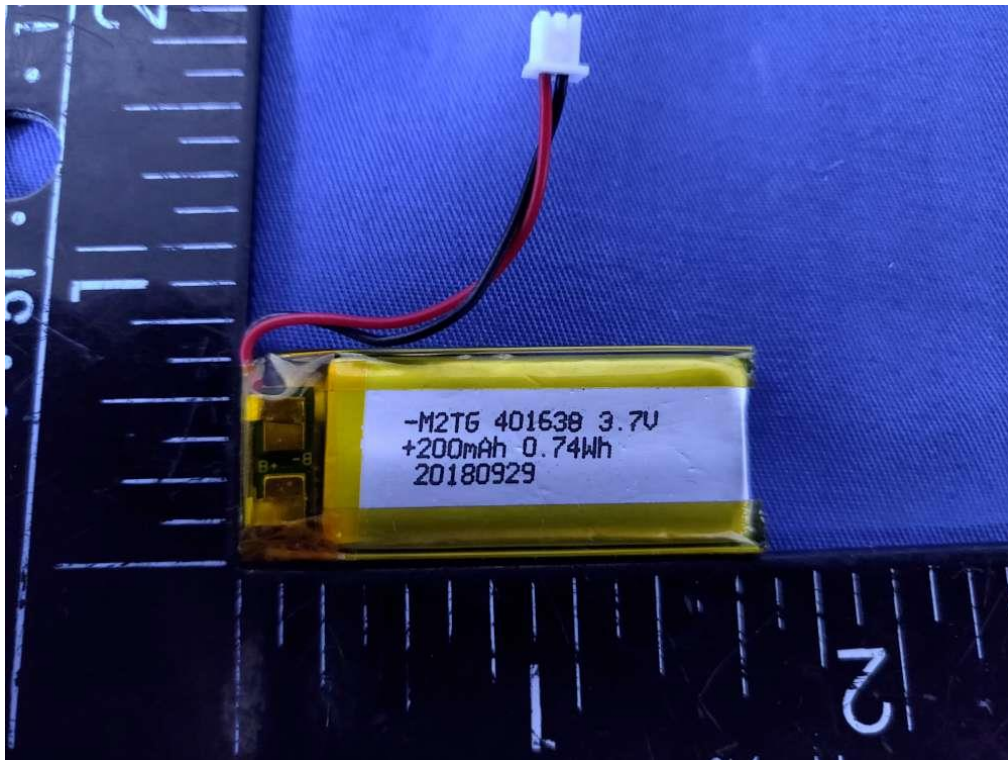












.....End of Report.....