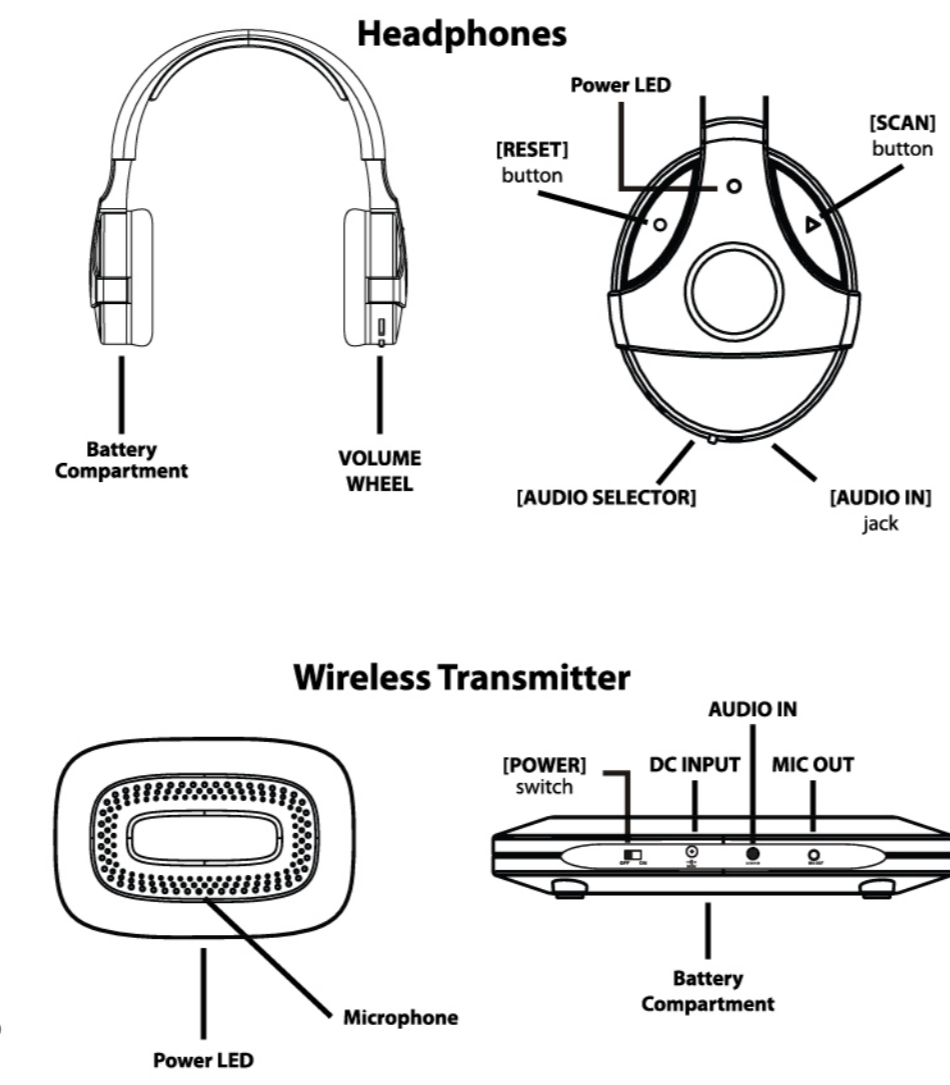


User Guide

AC Charger / Battery Version

In the box

Location of controls

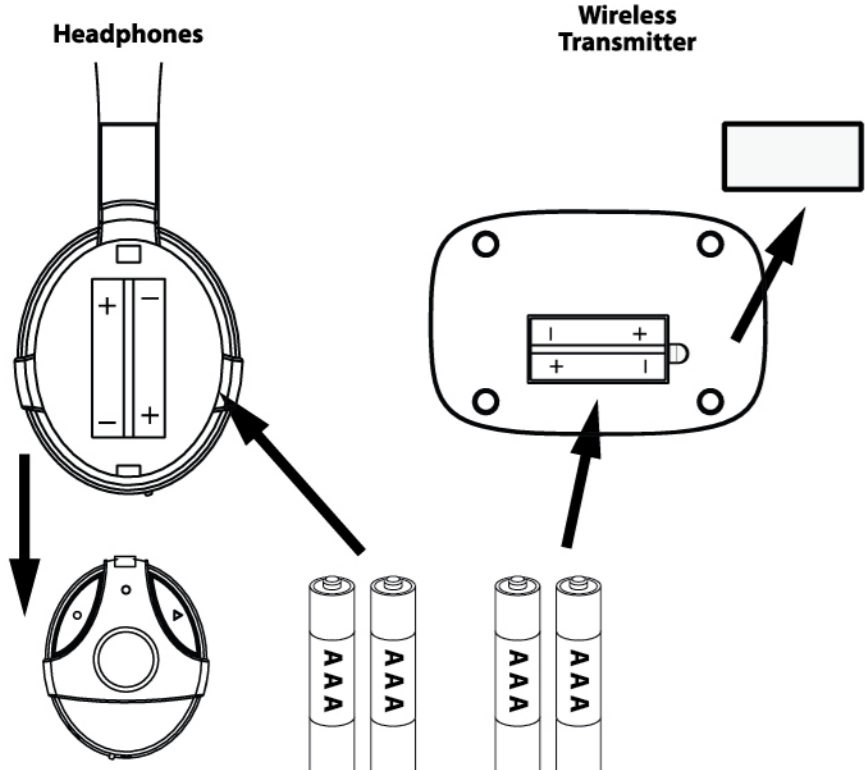


Installing the batteries

Using your wireless headphones

Connecting the wireless transmitter

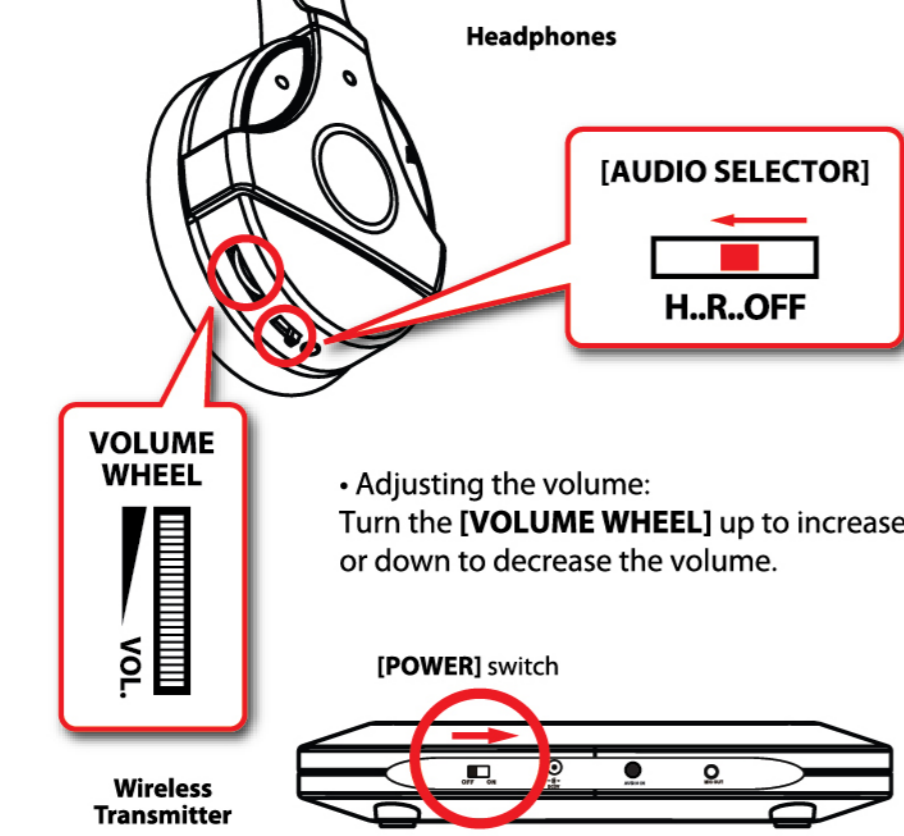
1. Open the battery cover of the headphones and transmitter.



2. Insert two (2) AAA alkaline batteries with the (+) and (-) poles correctly aligned into the battery compartments of the headphones and transmitter.

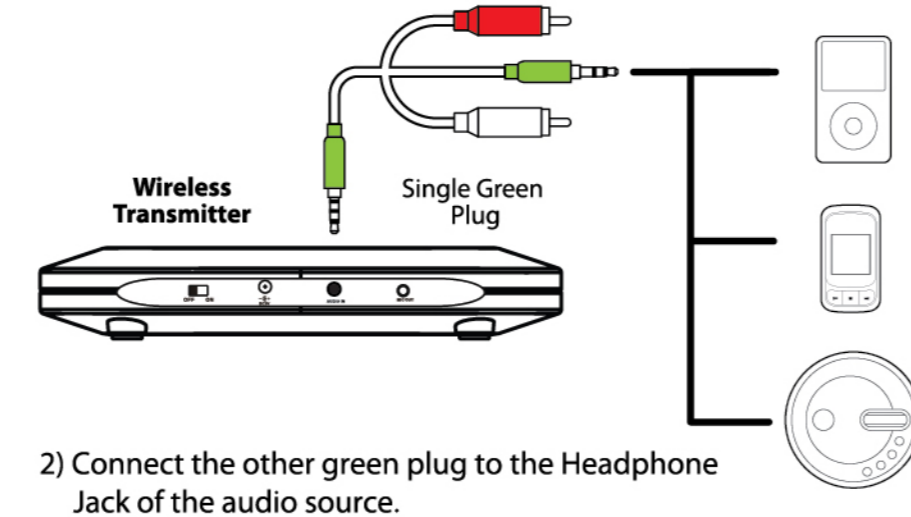
3. Close the battery covers.

• Turning on/off: Slide the [POWER] switch of the **Wireless Transmitter** to the "ON" position, and then slide the [AUDIO SELECTOR] of the headphones to either "R" for FM radio or "H" to listen to audio received from the **Wireless Transmitter**.



• Connecting to a stereo, iPod, mp3 or CD player

1) Connect the single green plug of the provided **AUDIO CABLE** to the "AUDIO IN" jack of the **Wireless Transmitter**.

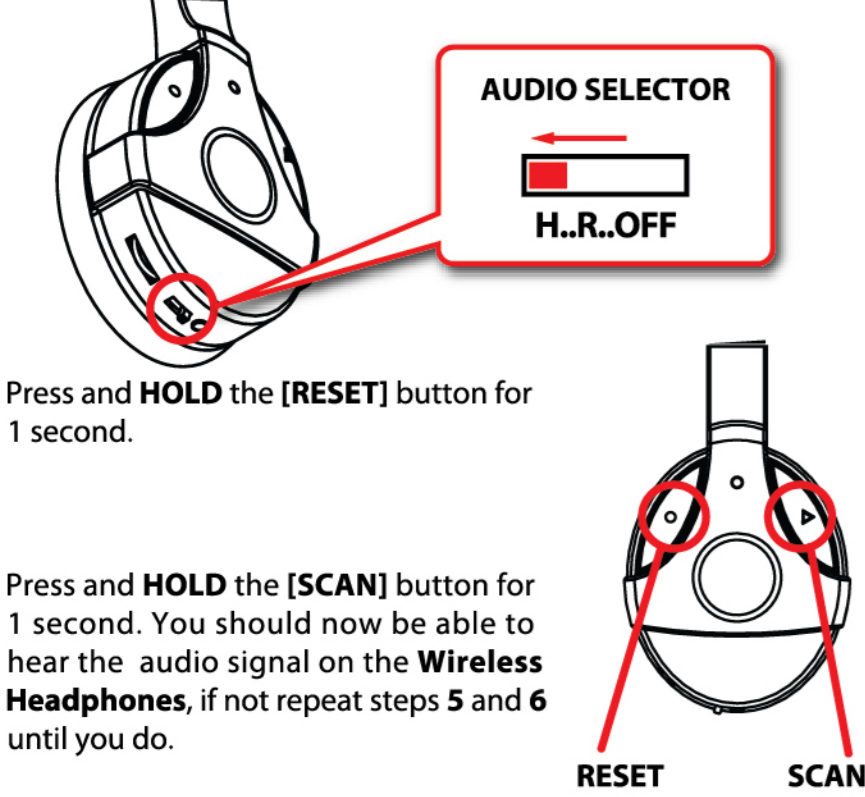


2) Connect the other green plug to the Headphone Jack of the audio source.

3) Slide the [POWER] switch of the **Wireless Transmitter** to the "ON" position.



4) Slide the [AUDIO SELECTOR] of the **Wireless Headphones** to the "H" position (the headphone's green LED indicator is lit) and make sure the volume is turned up.



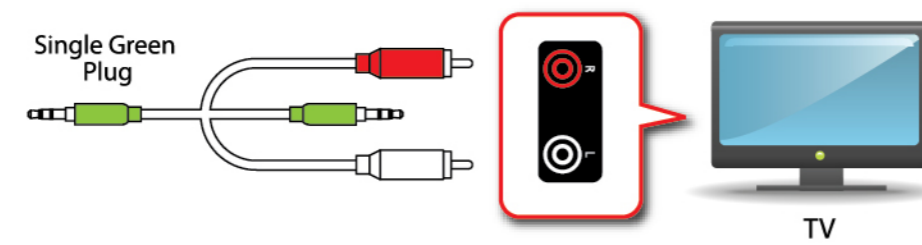
5) Press and HOLD the [RESET] button for 1 second.

6) Press and HOLD the [SCAN] button for 1 second. You should now be able to hear the audio signal on the **Wireless Headphones**, if not repeat steps 5 and 6 until you do.

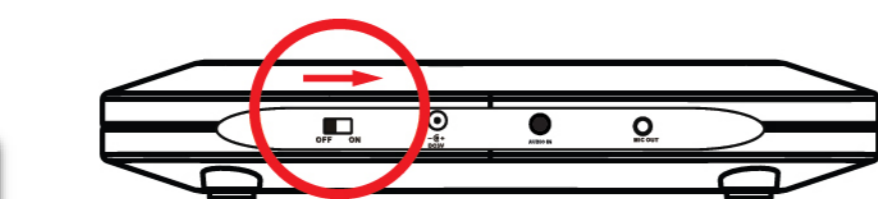
• Connecting to a television

1) Connect the single green plug of the provided **AUDIO CABLE** to the "AUDIO IN" jack of the **Wireless Transmitter**.

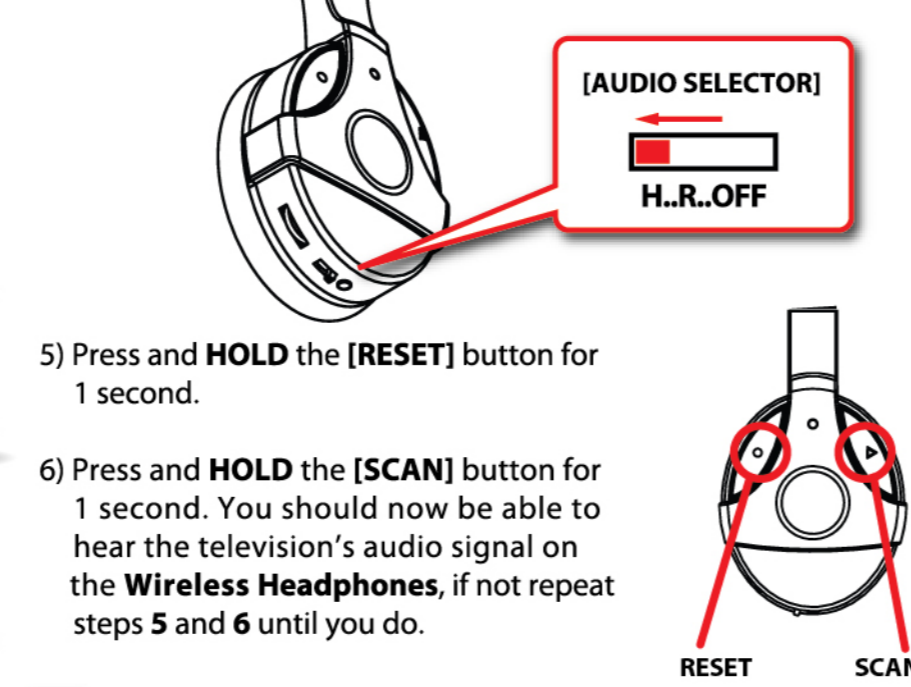
2) Connect the red and white plugs to the matching output jacks of your television, or if you receive Cable or Satellite service- connect the red and white plugs to the matching output jacks of the Cable or Satellite box.



3) Slide the [POWER] switch of the **Wireless Transmitter** to the "ON" position.



4) Slide the [AUDIO SELECTOR] of the **Wireless Headphones** to the "H" position (the headphone's green LED indicator is lit) and make sure the volume is turned up.



5) Press and HOLD the [RESET] button for 1 second.

6) Press and HOLD the [SCAN] button for 1 second. You should now be able to hear the television's audio signal on the **Wireless Headphones**, if not repeat steps 5 and 6 until you do.

Before each use you must repeat steps 5 and 6 (press [RESET] and then [SCAN] on the **Wireless Headphones**).

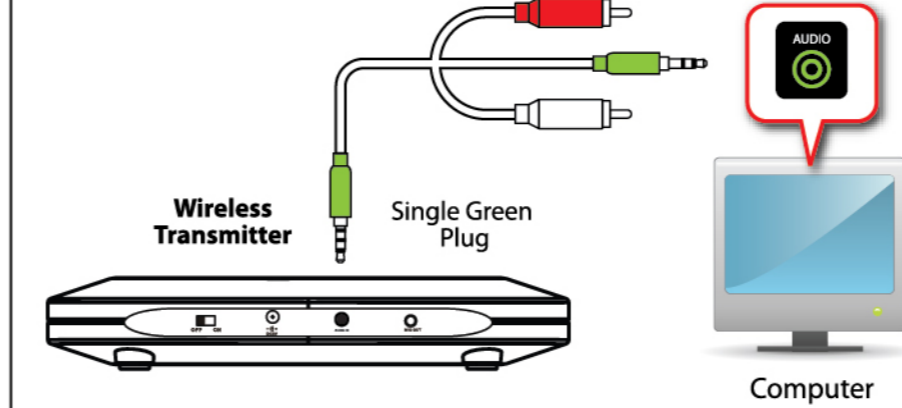
When connecting to a television that receives Cable or Satellite service, connect the red and white plugs of the **AUDIO CABLE** to the matching output jacks of the Cable or Satellite box, do NOT connect them to the television.

Before each use you must repeat steps 5 and 6 (press [RESET] and then [SCAN] on the **Wireless Headphones**).

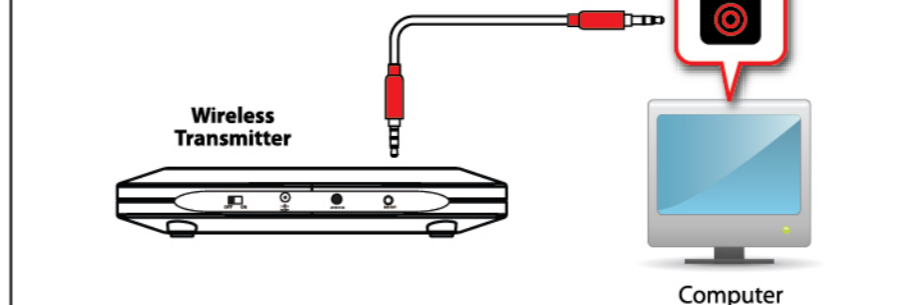
• Connecting to a computer

1) Connect the single green plug of the provided **AUDIO CABLE** to the "AUDIO IN" jack of the **Wireless Transmitter**.

2) Connect the other green plug to your computer's Headphone Jack.



3) Connect one end of the **Microphone Cable** to the "MIC OUT" jack of the **Wireless Transmitter**, and the other end to your computer's Microphone Jack.



4) Slide the [POWER] switch of the **Wireless Transmitter** to the "ON" position.

5) Slide the [AUDIO SELECTOR] of the **Wireless Headphones** to the "H" position (the headphone's green LED indicator is lit) and make sure the volume is turned up.

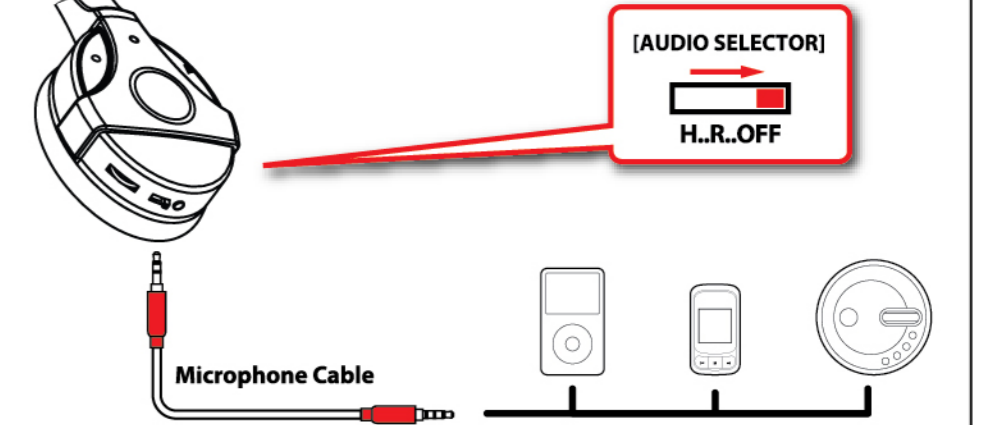
6) Press and HOLD the [RESET] button for 1 second.

7) Press and HOLD the [SCAN] button for 1 second. You should now be able to hear the computer's audio signal on the **Wireless Headphones**, and be able to chat online using the **Wireless Transmitter's** built-in microphone.

Before each use you must repeat steps 5 and 6 (press [RESET] and then [SCAN] on the **Wireless Headphones**).

Using as wired headphones

1) Make sure the [AUDIO SELECTOR] of the wireless headphones is in the "OFF" position.



2) Connect one end of the **Microphone Cable** to the "AUDIO IN" jack on the headphones.

3) Connect the other end of the **Microphone Cable** to the Headphone Jack of your audio device.

4) Adjust the volume on the device you are using, as the volume wheel of the headphones will not function when the [AUDIO SELECTOR] is in the "OFF" position.

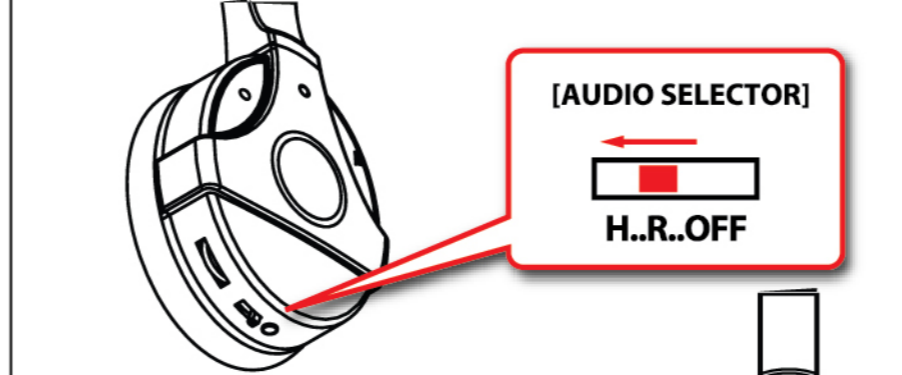
Using the built-in FM Radio

Troubleshooting

FCC Information

Follow the steps below to listen to FM radio on your **Wireless Headphones**.

1) Slide the [AUDIO SELECTOR] of the **Wireless Headphones** to the "R" position (the headphone's red LED indicator is lit) and make sure the volume is turned up.



2) Press and HOLD the [RESET] button for 1 second (this will reset the FM frequency to 88 MHz).

3) Select an FM radio station by continually pressing the [SCAN] button.

The **Wireless Transmitter** is not required when listening to FM radio on your **Wireless Headphones**.

I connected the **Wireless Transmitter** to a stereo, mp3 player or computer but do not hear anything on the **Wireless Headphones**

• Check that the [POWER] switch of the **Wireless Transmitter** is in the "ON" position, and the **Wireless Headphones's** [AUDIO SELECTOR] is in the "H" position.
• Press the [RESET] and then the [SCAN] button.
• Try adjusting the volume by making it higher.
• Replace the batteries

I connected the **Wireless Transmitter** to a television but do not hear anything on the **Wireless Headphones**

• If you are receiving Cable or Satellite service, make sure that the **AUDIO CABLE** is connected to the Cable or Satellite box and NOT the television.
• Check that the [POWER] switch of the **Wireless Transmitter** is in the "ON" position, and the **Wireless Headphones's** [AUDIO SELECTOR] is in the "H" position.
• Try adjusting the volume by making it higher.
• Replace the batteries

The sound quality is poor

• You may be out of range, try moving closer to the **Wireless Transmitter**.
• Press the [RESET] and [SCAN] buttons to acquire a better frequency.

The FM radio does not work

• Make sure that the **Wireless Headphones's** [AUDIO SELECTOR] is in the "R" position.
• Press the [RESET] and then the [SCAN] button.
• Continually press the [SCAN] button to search for different FM radio stations.

FCC Part 15

This equipment has been tested and found to comply with the requirements for a Class B digital device under Part 15 of the Federal Communications Commission (FCC) rules. These requirements are intended to provide reasonable protection against harmful interference in a residential installation. This equipment generates, uses and can radiate radio frequency energy and, if not installed and used in accordance with the instructions, may cause harmful interference to radio communications. However, there is no guarantee that interference will not occur in a particular installation. If this equipment does cause harmful interference to radio or television reception, which can be determined by turning the equipment off and on, the user is encouraged to try to correct the interference by one or more of the following measures:

- Re-orient or relocate the receiving antenna.
- Increase the separation between the equipment and receiver.
- Connect the equipment into an outlet on a circuit different from that to which the receiver is connected.
- Consult the dealer or an experienced radio/TV technician for help.

Do not attempt to repair or modify this equipment.

Warning: Changes or modifications to this equipment not expressly approved by the party responsible for compliance could void the user's authority to operate the equipment.

This device complies with Part 15 of the FCC Rules. Operation is subject to the following two conditions:

- (1) this device may not cause harmful interference, and
- (2) this device must accept any interference received, including interference that may cause undesired operation.

Safety Precautions & Warranty

Precautions in using the headphones

- Do not use the headphones while driving an automobile or riding a bicycle. It is dangerous, and against the law. To avoid an accident, do not turn up the volume of the headphones too high while walking.
- It is not recommended that you use the headphones at a high volume for an extended time, as this may cause hearing damage.

Important Battery Precautions

- Use only the type of battery specified in this user manual
- Batteries may present a risk of fire, explosion, or chemical burn if abused. Do not try to charge a battery that is not intended to be recharged.
- Do not dispose of the battery(ies) in a fire. They may explode. Check with local codes for disposal instructions.
- Non-rechargeable batteries, such as alkaline batteries, may leak if left in your product for a long period of time. Remove the batteries from the product if you are not going to use it for a month or more.
- If your product uses more than one battery, do not mix types and make sure they are inserted correctly. Mixing different types of batteries or inserting them incorrectly, may cause them to leak.
- Discard any leaky or deformed battery immediately. Leakage from battery acid can cause skin burns or other personal injury.
- Please help to protect the environment by recycling or disposing of batteries according to federal, state, and local regulations.

The shipping address of the authorized service center is:

Southern Telecom Inc.
ATTN: Returns Department
14-C 53rd Street
Brooklyn, NY 11232

Should you have any questions or problems concerning this product, please contact our customer service department at:

1-877-768-8483 (Toll Free)
Monday - Thursday: 9AM - 5PM (EST)
Friday: 9AM - 3PM (EST)
or
via e-mail at
cs@southern telecom.com

Warranty service not provided
This warranty does not cover damage resulting from accident, misuse, abuse, improper installation or operation, lack of reasonable care, and unauthorized modification. This warranty is voided in the event any unauthorized person opens, alters or repairs this product. All products being returned to the authorized service center for repair must be suitably packaged.

Limitation of Warranty:
• THE WARRANTY STATED ABOVE IS THE ONLY WARRANTY APPLICABLE TO THIS PRODUCT. ALL OTHER WARRANTIES, EXPRESS OR IMPLIED (INCLUDING ALL IMPLIED WARRANTIES OF MERCHANTABILITY OR FITNESS FOR A PARTICULAR PURPOSE) ARE HEREBY DISCLAIMED. NO VERBAL OR WRITTEN INFORMATION GIVEN BY SOUTHERN TELECOM, INC.'S AGENTS, OR EMPLOYEES SHALL CREATE A WARRANTY OR IN ANY WAY INCREASE THE SCOPE OF THIS WARRANTY.
• REPAIR OR REPLACEMENT AS PROVIDED UNDER THIS WARRANTY IS THE EXCLUSIVE REMEDY OF THE CONSUMER. SOUTHERN TELECOM, INC. SHALL NOT BE LIABLE FOR INCIDENTAL OR CONSEQUENTIAL DAMAGES RESULTING FROM THE USE OF THIS PRODUCT OR ARISING OUT OF ANY BREACH OF ANY EXPRESS OR IMPLIED WARRANTY ON THIS PRODUCT. THIS DISCLAIMER OF WARRANTIES AND LIMITED WARRANTY ARE GOVERNED BY THE LAWS OF THE STATE OF NEW YORK. EXCEPT TO THE EXTENT PROHIBITED BY APPLICABLE LAW, ANY IMPLIED WARRANTY OF MERCHANTABILITY OR FITNESS FOR A PARTICULAR PURPOSE ON THIS PRODUCT IS LIMITED TO THE APPLICABLE WARRANTY PERIOD SET FORTH ABOVE.

Some states do not allow the exclusion or limitation of incidental or consequential damages, or limitations on how long an implied warranty lasts so the above limitations or exclusions may not apply to you. This warranty gives you specific legal rights, and you also may have other rights that vary from state to state.

1 year Limited Warranty

In the unlikely event that this product is defective, or does not perform properly, you may within 1 year from your original date of purchase return it to the authorized service center for repair or exchange.

TO OBTAIN WARRANTY SERVICE:

- Provide proof of the date of purchase within the package (Dated bill of sale).
- Prepay all shipping costs to the authorized service center, and remember to insure your return.
- Include a return shipping address (no P.O. Boxes), a telephone contact number, and the defective unit within the package.
- Describe the defect or reason you are returning the product.

Your product will be repaired or replaced, at our option, for the same or similar model of equal value if examination by the service center determines this product is defective. Products received damaged as a result of shipping will require you to file a claim with the carrier.

Made in China • Designed in USA
Distributed by: Southern Telecom, Inc. Brooklyn, NY 11232
© 2009 Southern Telecom, Inc. All Rights Reserved.

THE SHARPER IMAGE® name and logo are registered trademarks. Manufactured and Marketed by Southern Telecom, Inc. under license. © The Sharper Image. All Rights Reserved.

iPod is a trademark of Apple Inc., registered in the U.S. and other countries. Other trademarks and trade names are those of their respective owners.

FRONT

BACK