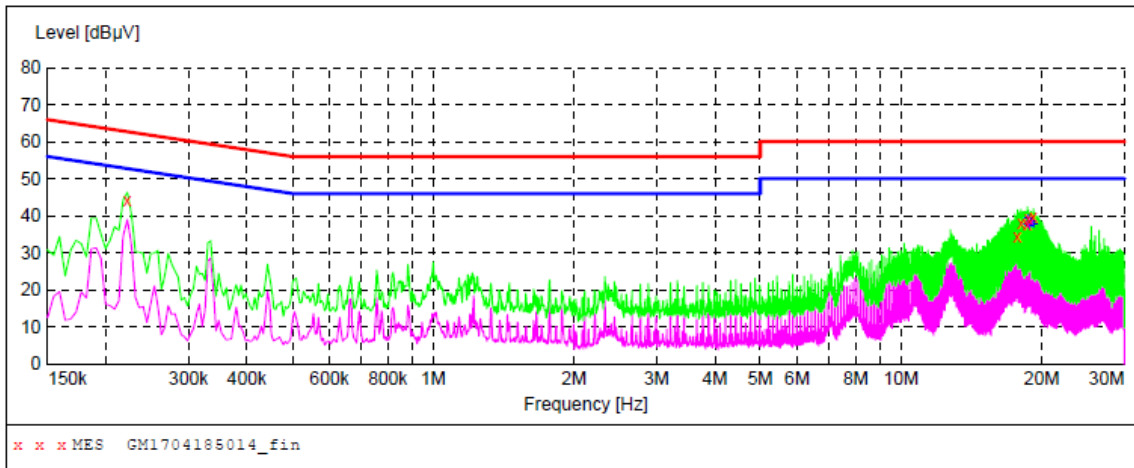


Test mode:	RX1	Polarization	N
------------	-----	--------------	---



Frequency MHz	Level dBµV	Transd dB	Limit dBµV	Margin dB	Detector	Line	PE
0.222000	44.30	10.3	63	18.4	QP	N	GND
17.736000	34.30	10.5	60	25.7	QP	N	GND
18.064500	38.20	10.5	60	21.8	QP	N	GND
18.622500	37.60	10.5	60	22.4	QP	N	GND
18.730500	39.10	10.5	60	20.9	QP	N	GND
19.171500	39.60	10.5	60	20.4	QP	N	GND
Frequency MHz	Level dBµV	Transd dB	Limit dBµV	Margin dB	Detector	Line	PE
18.618000	37.70	10.5	50	12.3	AV	N	GND
18.726000	39.30	10.5	50	10.7	AV	N	GND
18.838500	37.10	10.5	50	12.9	AV	N	GND
18.946500	38.60	10.5	50	11.4	AV	N	GND
19.059000	38.50	10.5	50	11.5	AV	N	GND
19.171500	37.60	10.5	50	12.4	AV	N	GND

5.11. Radiated Emission

LIMIT

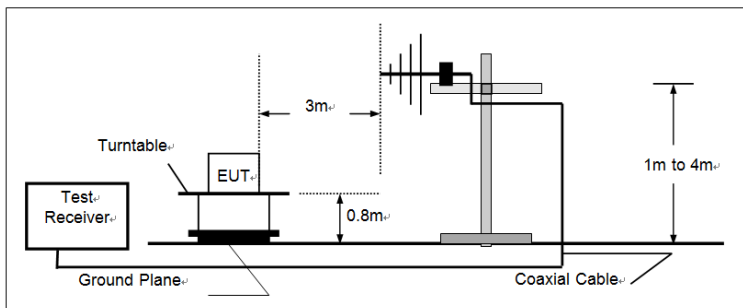
For unintentional device, according to § 15.109(a) except for Class A digital devices, the field strength of radiated emissions from unintentional radiators at a distance of 3 meters shall not exceed the following values:

Frequency (MHz)	Distance (Meters)	Radiated (dBµV/m)	Radiated (µV/m)
30-88	3	40.0	100
88-216	3	43.5	150
216-960	3	46.0	200
Above 960	3	54.0	500

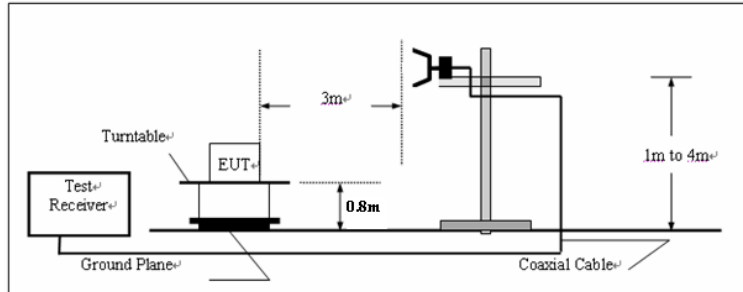
For intentional device, according to § 15.209(a), the general requirement of field strength of radiated emissions from intentional radiators at a distance of 3 meters shall not exceed the above table.

TEST CONFIGURATION

(A) Radiated Emission Test Set-Up, Frequency below 1000MHz



(B) Radiated Emission Test Set-Up, Frequency above 1000MHz



TEST PROCEDURE

- 1 The EUT was placed on a turn table which is 0.8m above ground plane.
- 2 Maximum procedure was performed by raising the receiving antenna from 1m to 4m and rotating the turn table from 0°C to 360°C to acquire the highest emissions from EUT
- 3 And also, each emission was to be maximized by changing the polarization of receiving antenna both horizontal and vertical.
- 4 Repeat above procedures until all frequency measurements have been completed.

TEST MODE:

Please reference to the section 3.4

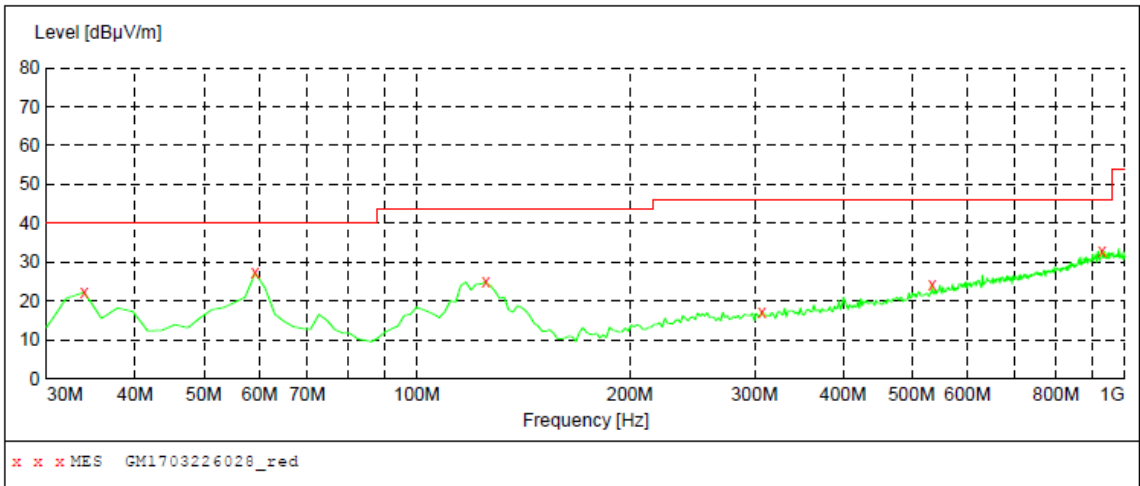
TEST RESULTS

Passed Not Applicable

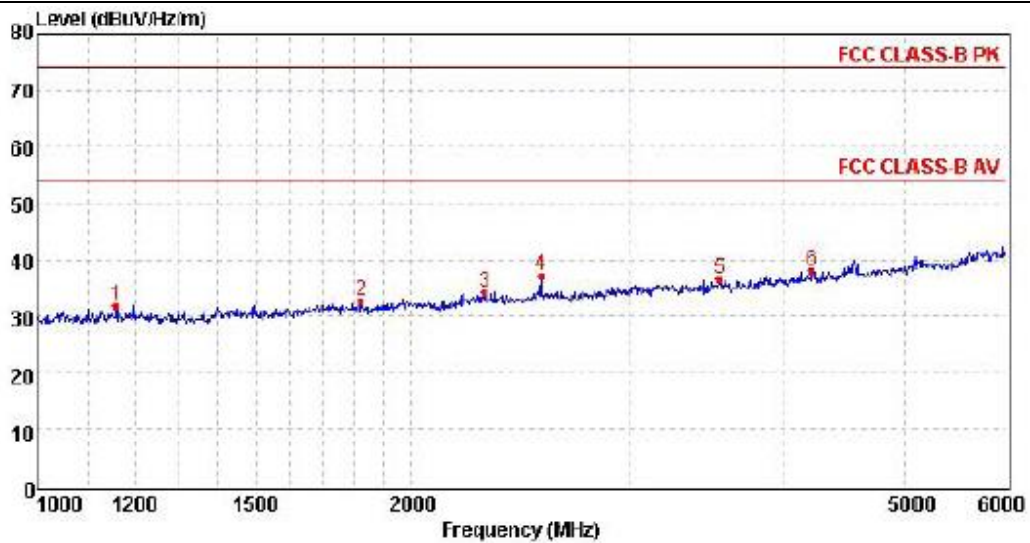
Note:

1. The EUT shall be scanned from 30 MHz to the 5th harmonic of the highest oscillator frequency in the digital devices or 1 GHz whichever is higher.
2. Have pre-tested RX1 to RX2 mode, record the worst case mode RX1 on the report.

Test Mode:	RX1	Polarity:	Horizontal
------------	-----	-----------	------------

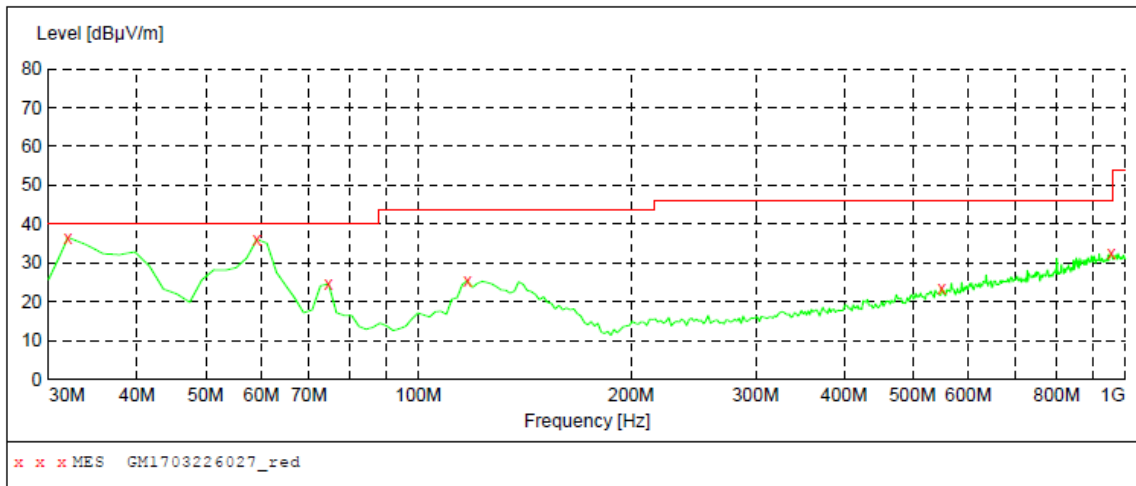


Frequency MHz	Level dBµV/m	Transd dB	Limit dBµV/m	Margin dB	Det.	Height cm	Azimuth deg	Polarization
33.880000	22.20	-17.9	40.0	17.8	QP	300.0	82.00	HORIZONTAL
59.100000	27.20	-17.1	40.0	12.8	QP	300.0	229.00	HORIZONTAL
125.060000	24.90	-18.8	43.5	18.6	QP	300.0	229.00	HORIZONTAL
307.420000	17.10	-12.8	46.0	28.9	QP	300.0	203.00	HORIZONTAL
534.400000	24.30	-6.7	46.0	21.7	QP	100.0	268.00	HORIZONTAL
928.220000	33.00	1.4	46.0	13.0	QP	300.0	10.00	HORIZONTAL

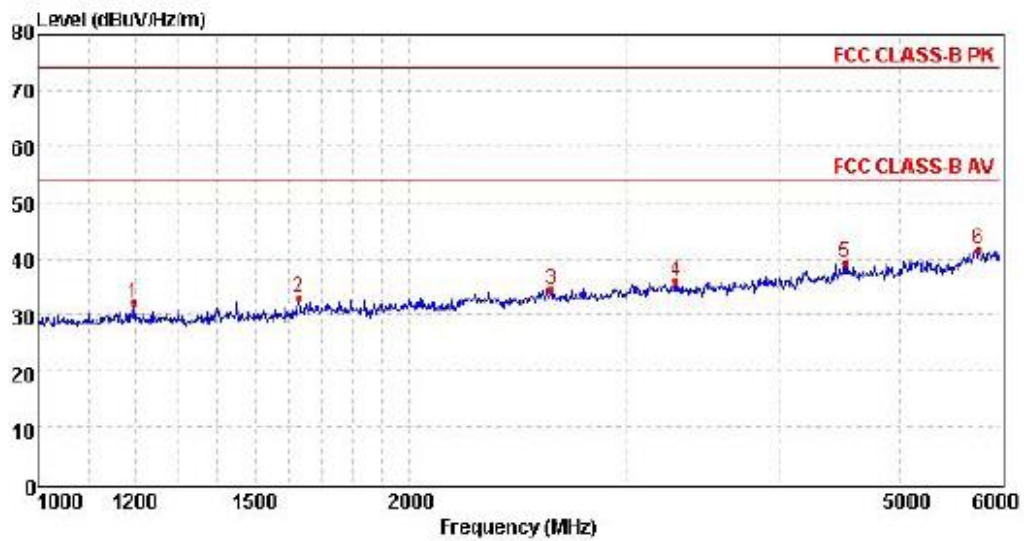


Mark	Frequency MHz	Reading dBµV/m	Antenna dB	Cable dB	Preamp dB	Level dBµV/m	Limit dBµV/m	Over limit	Remark
1	1158.27	39.50	24.30	4.57	36.59	31.86	74.00	-42.14	Peak
2	1822.56	38.09	25.65	5.99	37.16	32.57	74.00	-41.43	Peak
3	2292.37	37.92	27.20	6.59	37.60	34.11	74.00	-39.89	Peak
4	2543.41	40.10	27.96	6.87	37.86	37.07	74.00	-36.93	Peak
5	3543.03	37.96	28.79	8.18	38.35	36.58	74.00	-37.42	Peak
6	4200.48	36.58	30.09	8.94	37.65	37.96	74.00	-36.04	Peak

Test Mode:	RX1	Polarity:	Vertical
------------	-----	-----------	----------



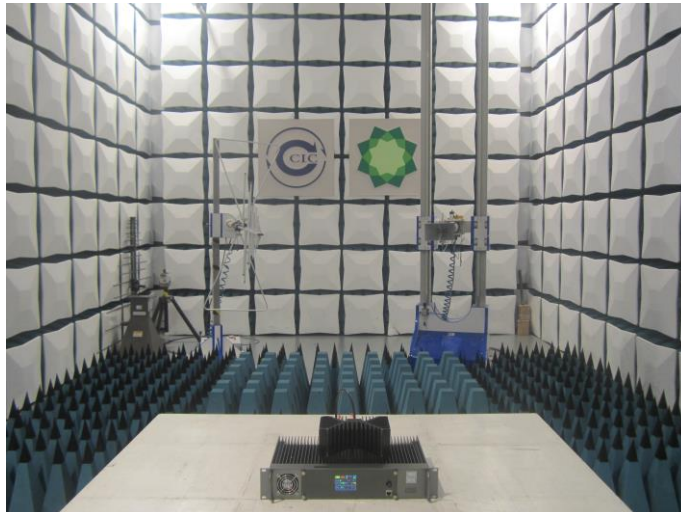
Frequency MHz	Level dBµV/m	Transd dB	Limit dBµV/m	Margin dB	Det.	Height cm	Azimuth deg	Polarization
31.940000	36.50	-18.3	40.0	3.5	QP	100.0	274.00	VERTICAL
59.100000	36.10	-17.1	40.0	3.9	QP	100.0	308.00	VERTICAL
74.620000	24.50	-20.0	40.0	15.5	QP	100.0	274.00	VERTICAL
117.300000	25.40	-18.2	43.5	18.1	QP	100.0	135.00	VERTICAL
549.920000	23.50	-6.2	46.0	22.5	QP	100.0	247.00	VERTICAL
955.380000	32.30	1.6	46.0	13.7	QP	100.0	247.00	VERTICAL



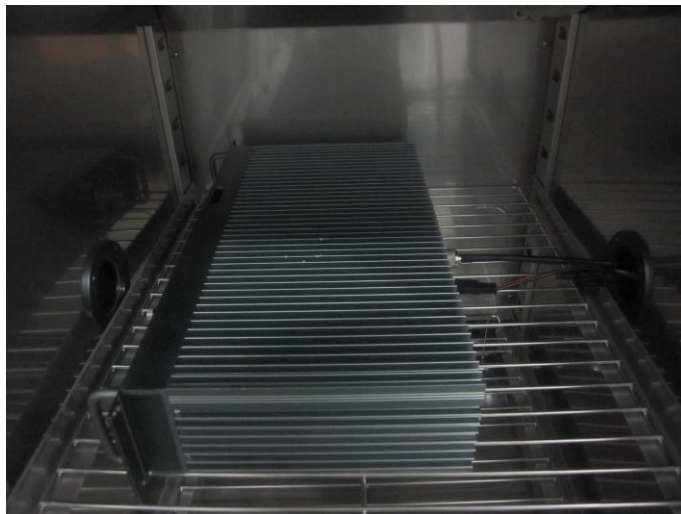
Mark	Frequency MHz	Reading dBµV/m	Antenna dB	Cable dB	Preamp dB	Level dBµV/m	Limit dBµV/m	Over limit	Remark
1	1196.23	39.67	24.42	4.65	36.57	32.17	74.00	-41.83	Peak
2	1628.01	39.04	25.11	5.62	36.78	32.99	74.00	-41.01	Peak
3	2603.35	37.29	28.03	6.92	37.85	34.39	74.00	-39.61	Peak
4	3286.19	38.03	28.62	7.82	38.35	36.12	74.00	-37.88	Peak
5	4504.51	36.33	30.91	9.30	37.39	39.15	74.00	-34.85	Peak
6	5757.76	33.79	32.83	10.52	35.44	41.70	74.00	-32.30	Peak

6. Test Setup Photos of the EUT

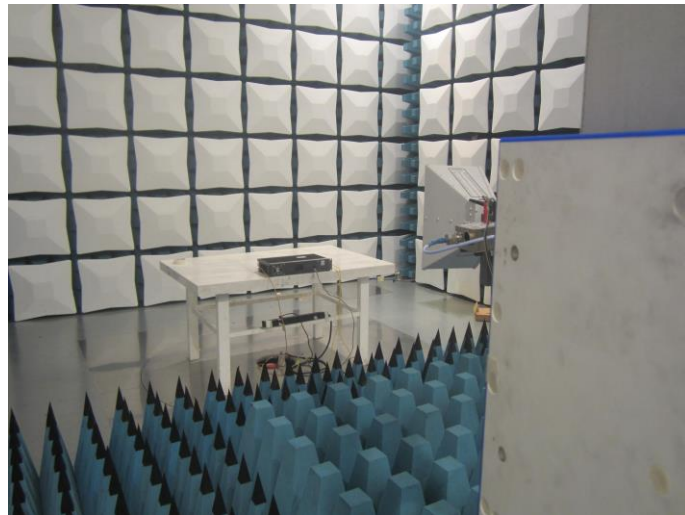
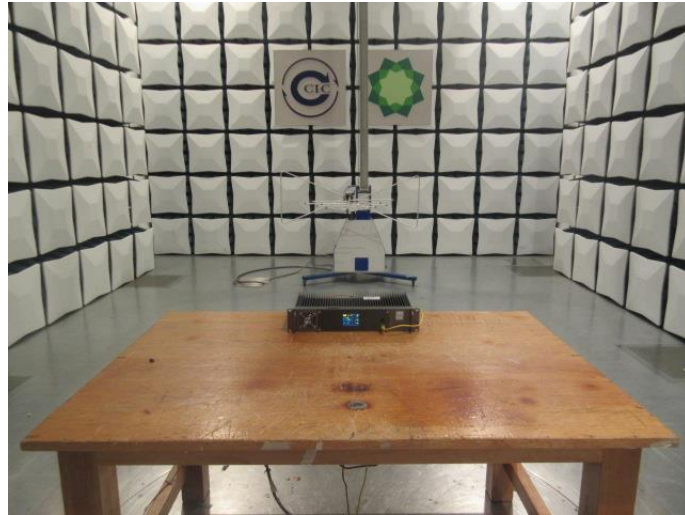
Transmitter Radiated Spurious Emission:



Frequency Stability:



Radiated Emission:

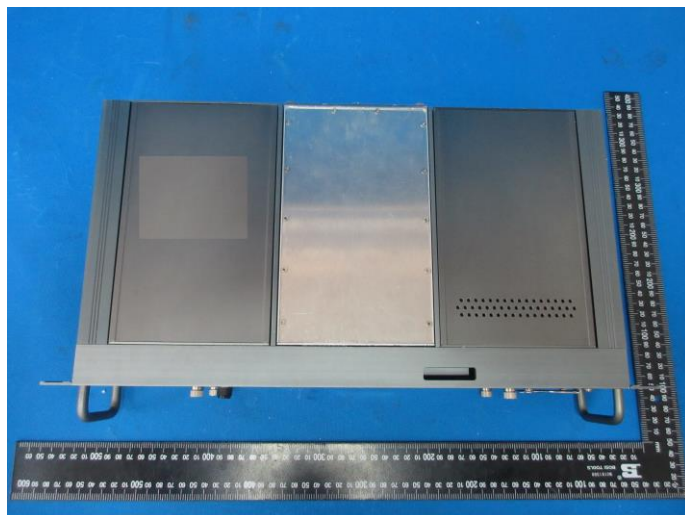
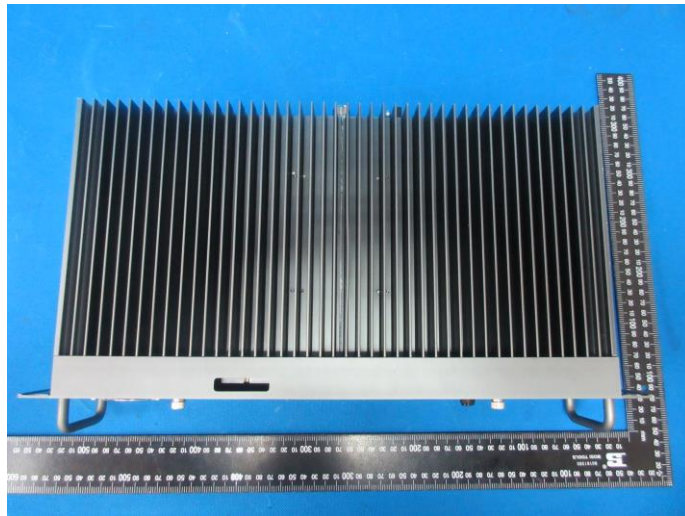


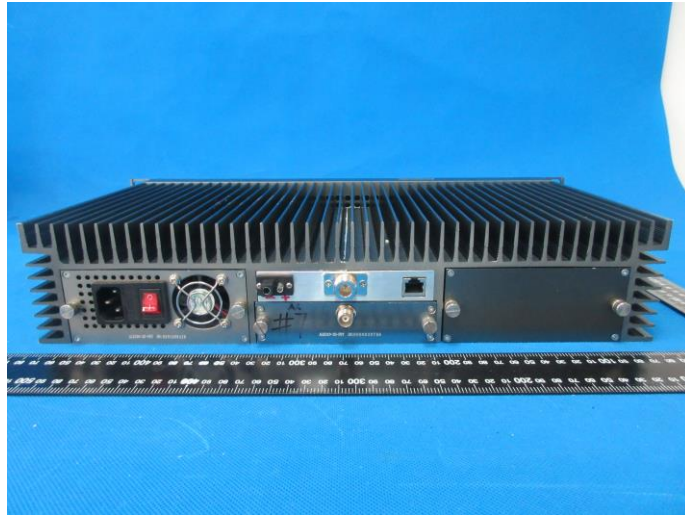
Conducted Emission:

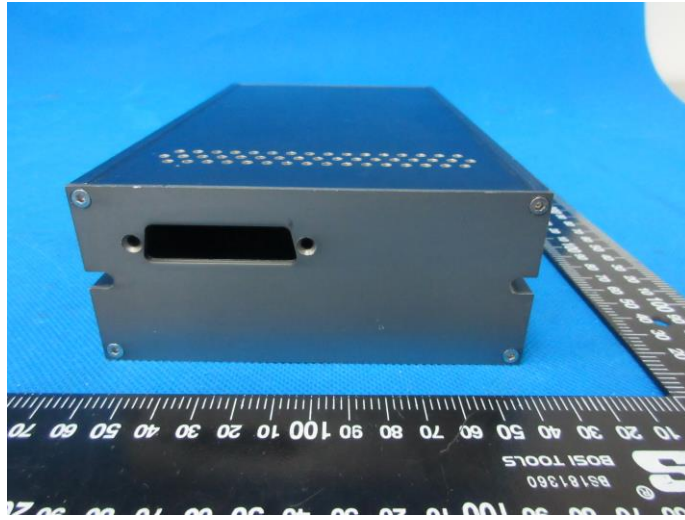


7. External and Internal Photos of the EUT

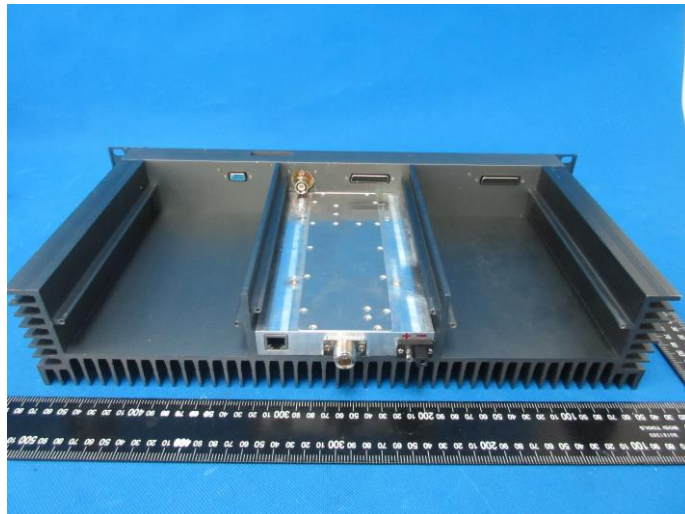
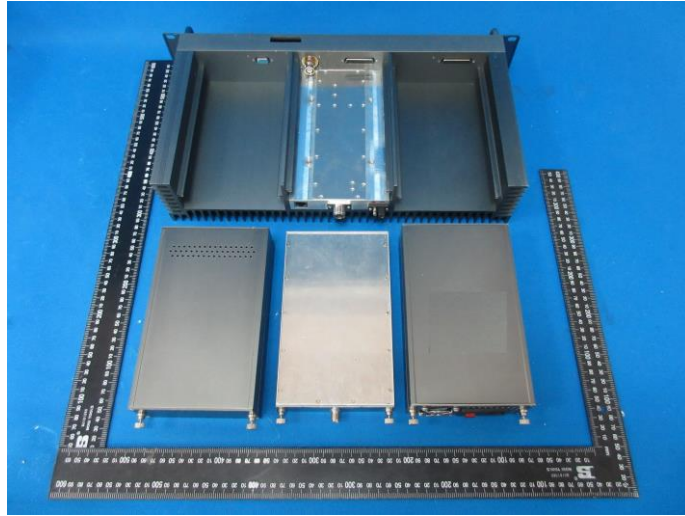
External photos

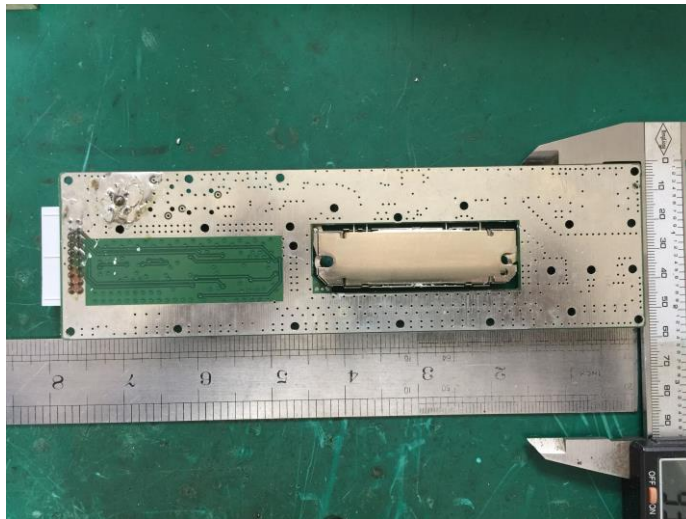
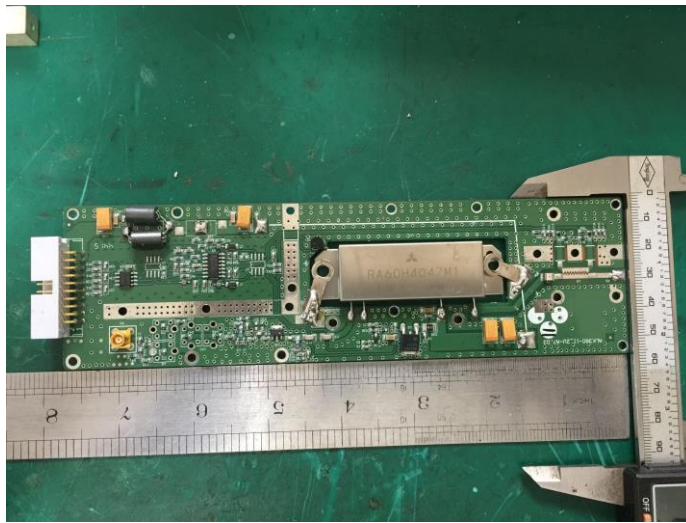
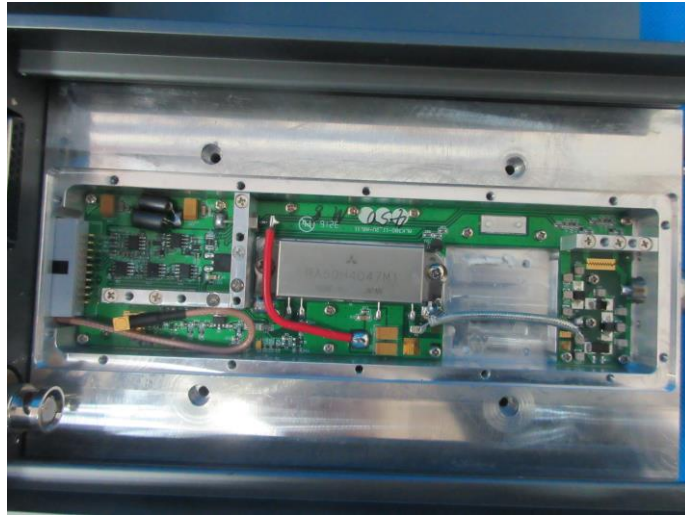


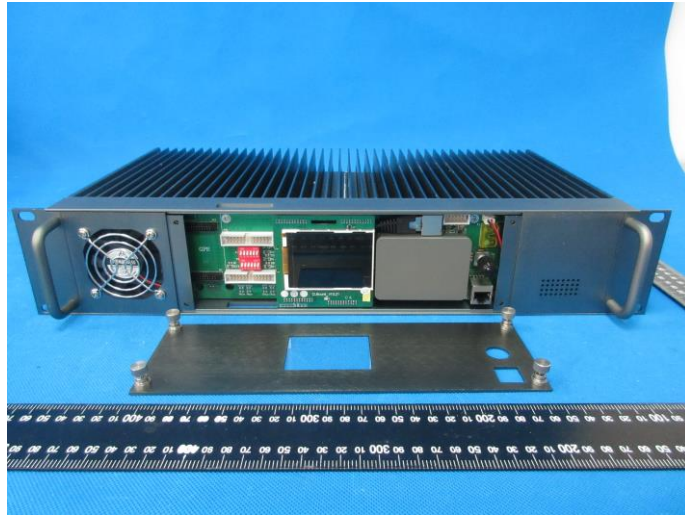


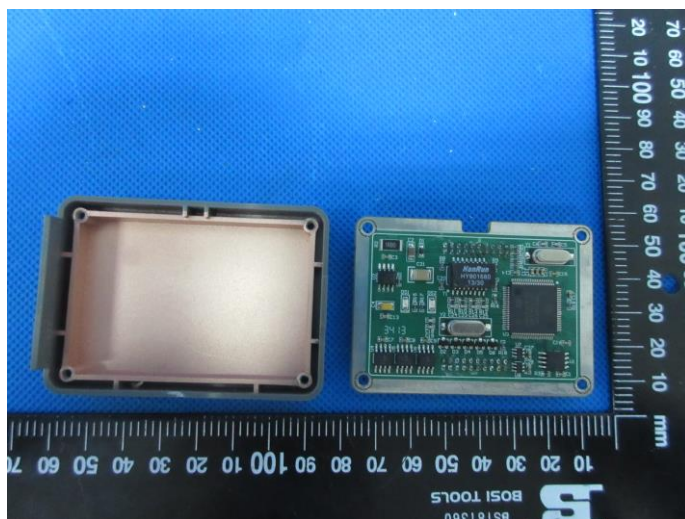
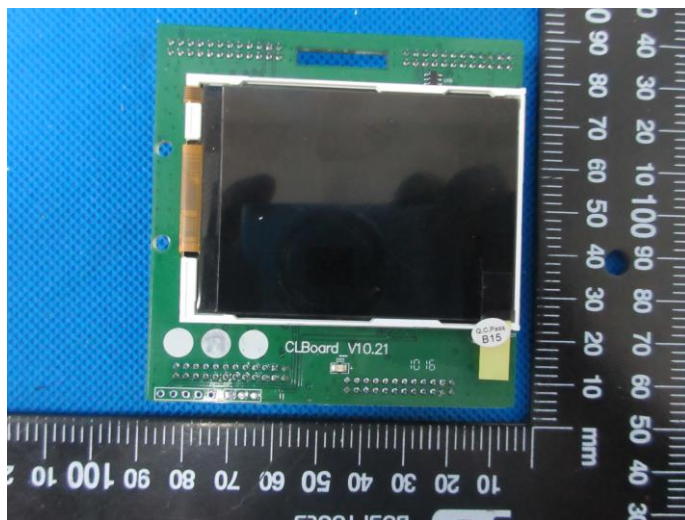
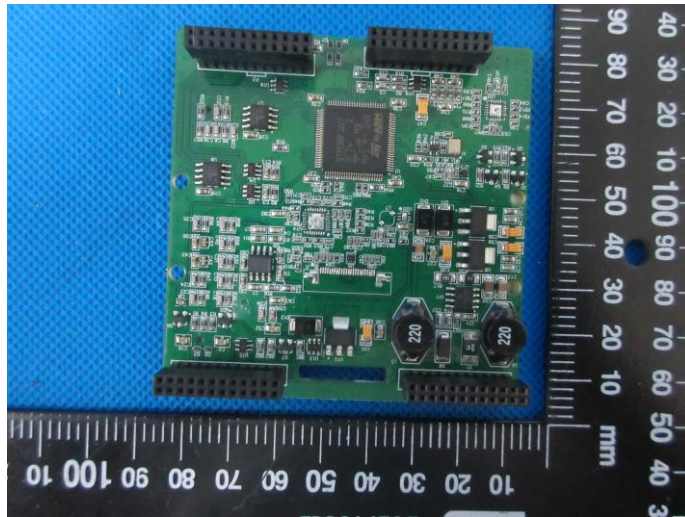


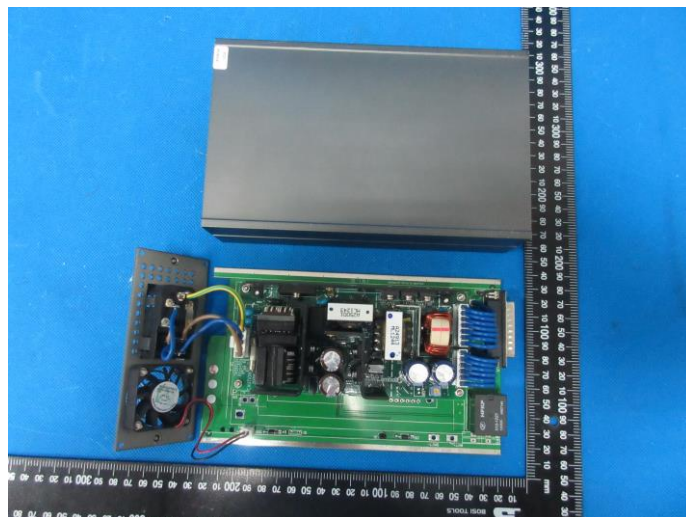
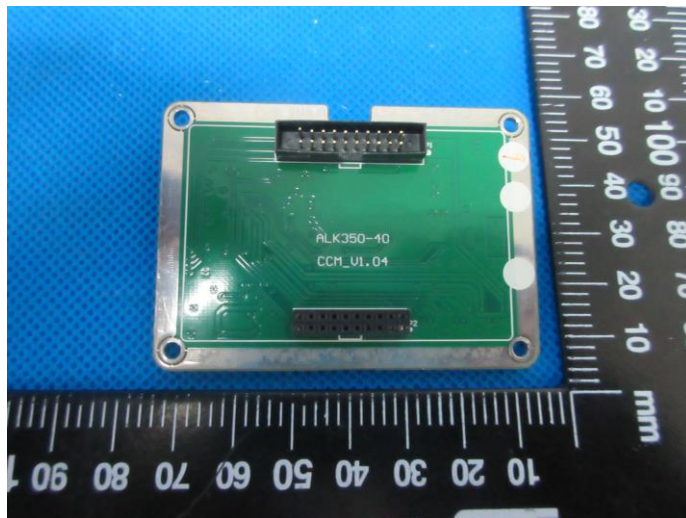
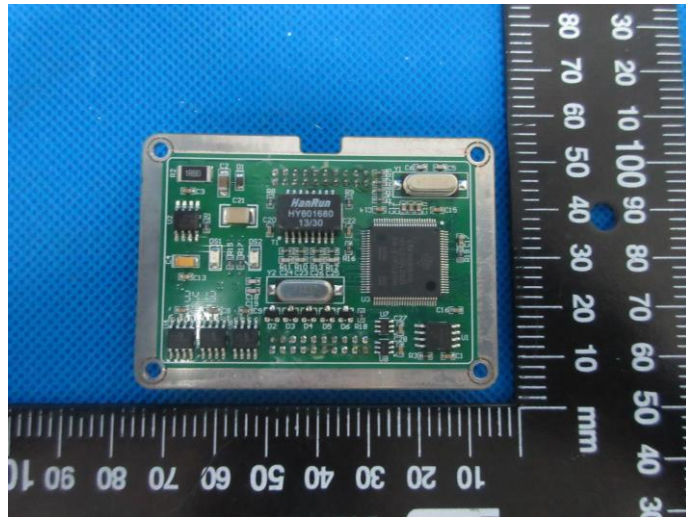
Internal photos

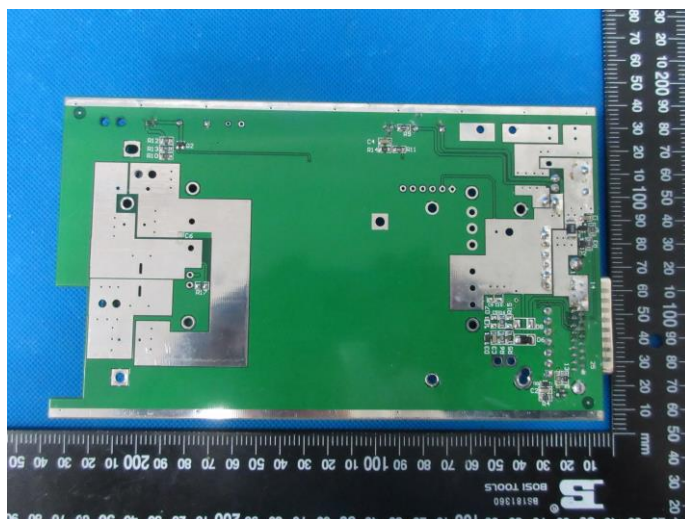
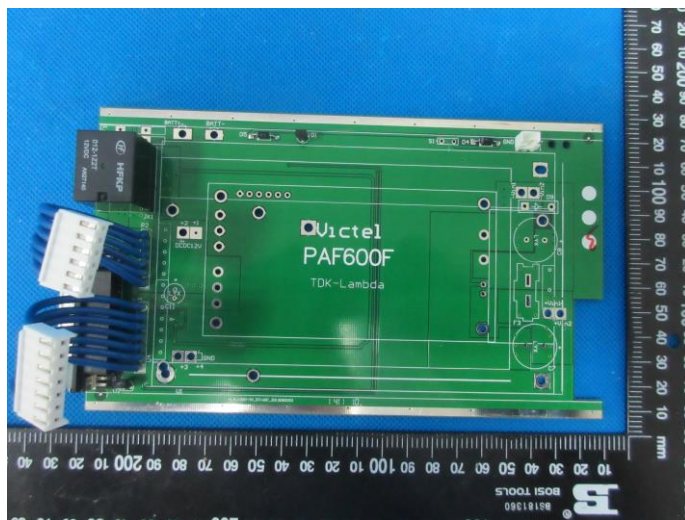
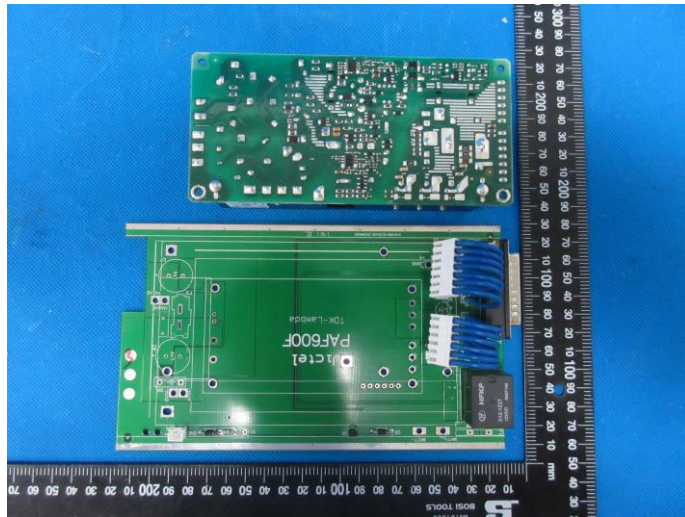


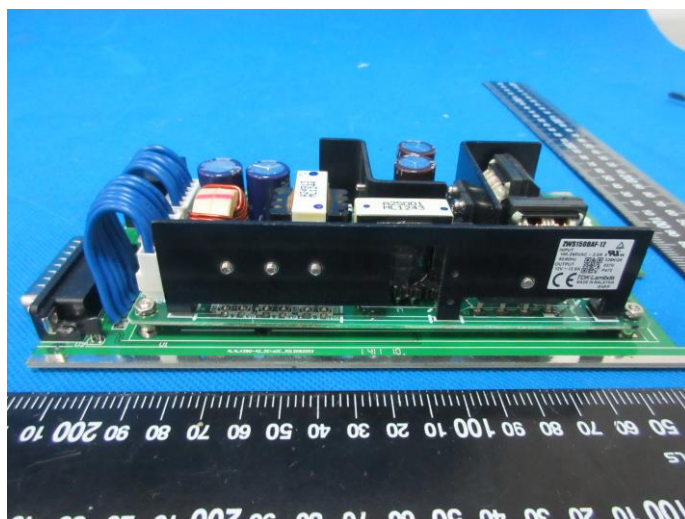
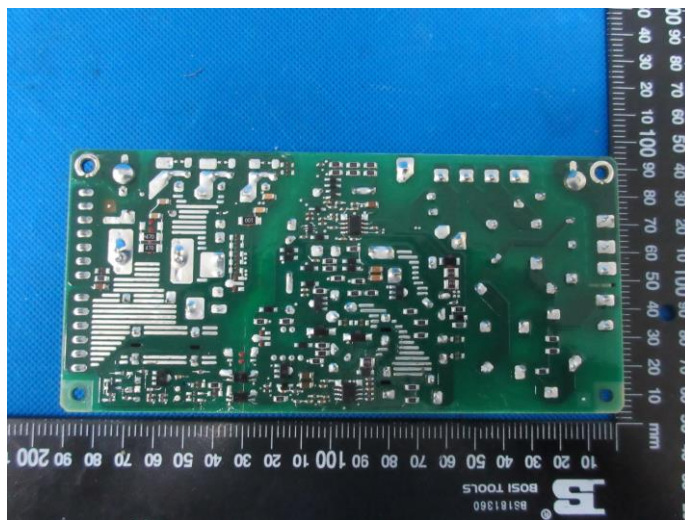


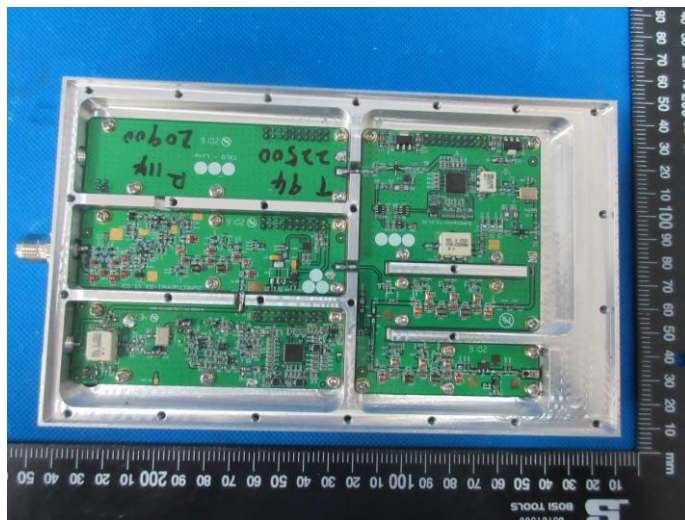
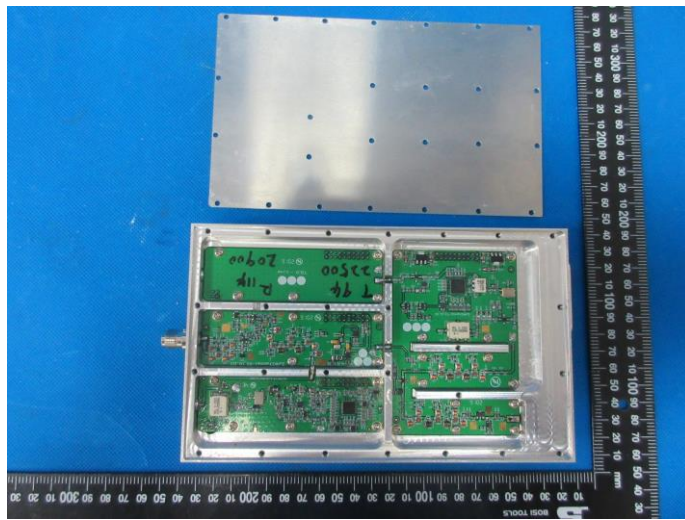
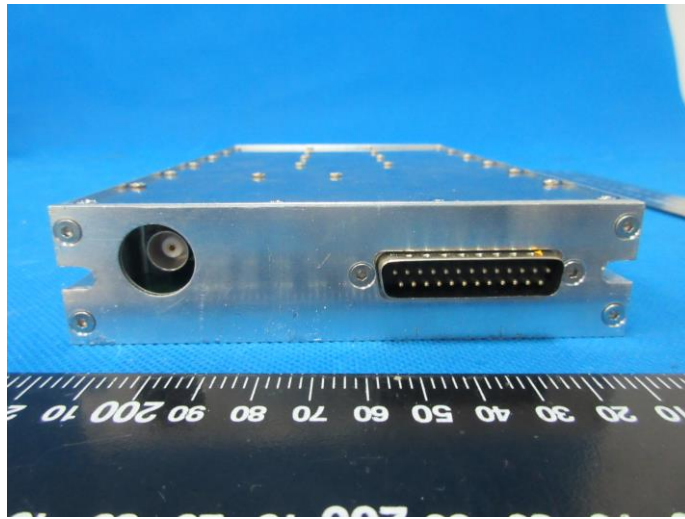


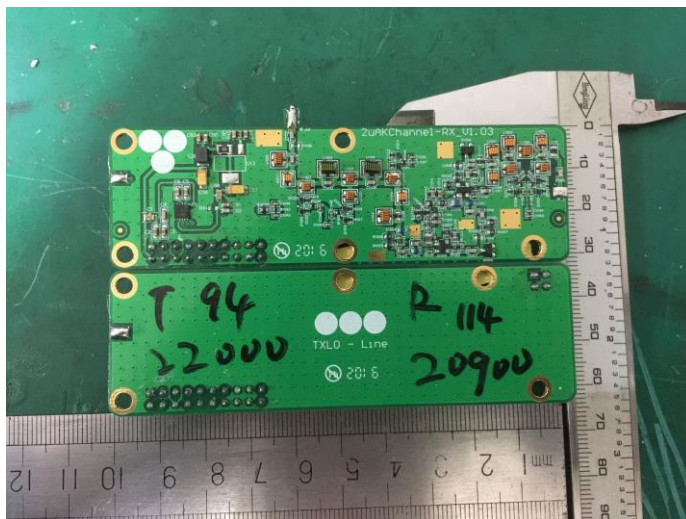
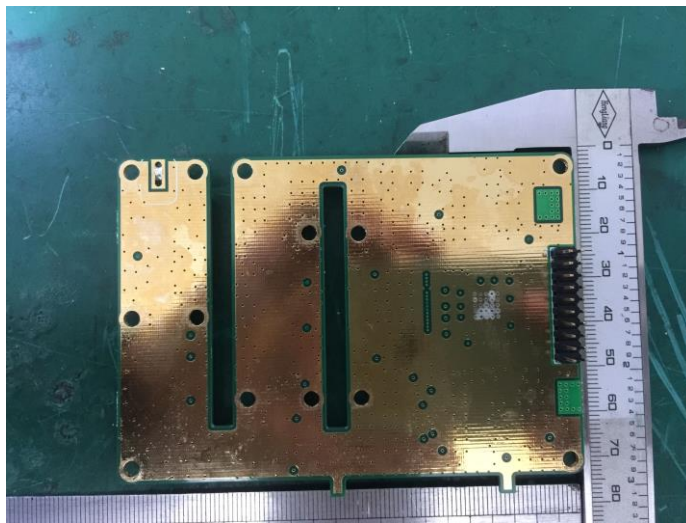
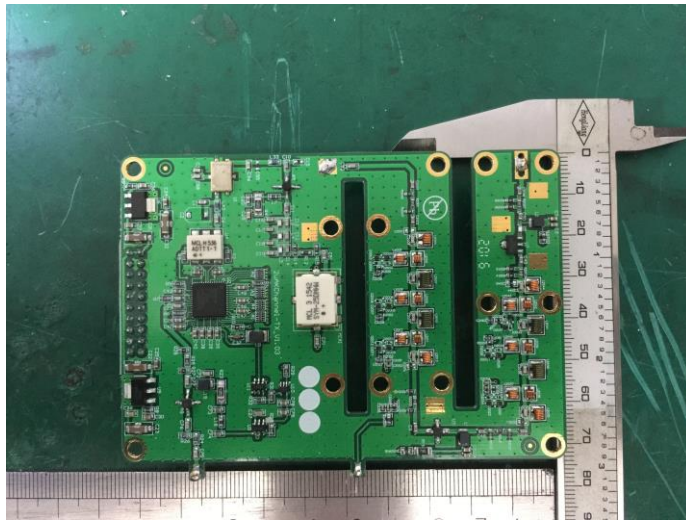


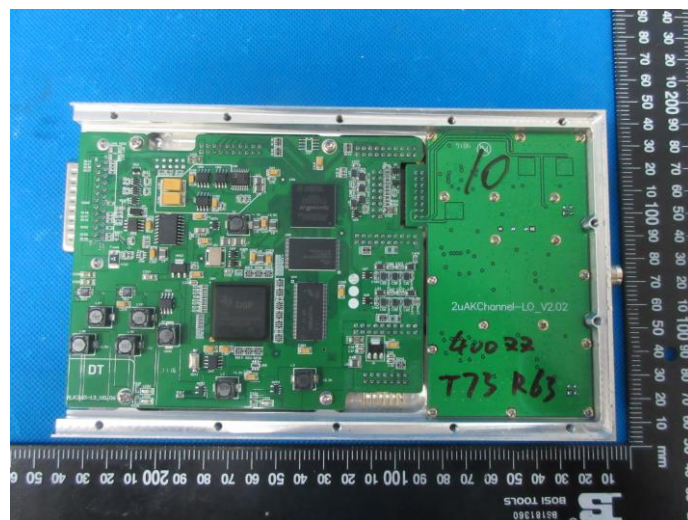


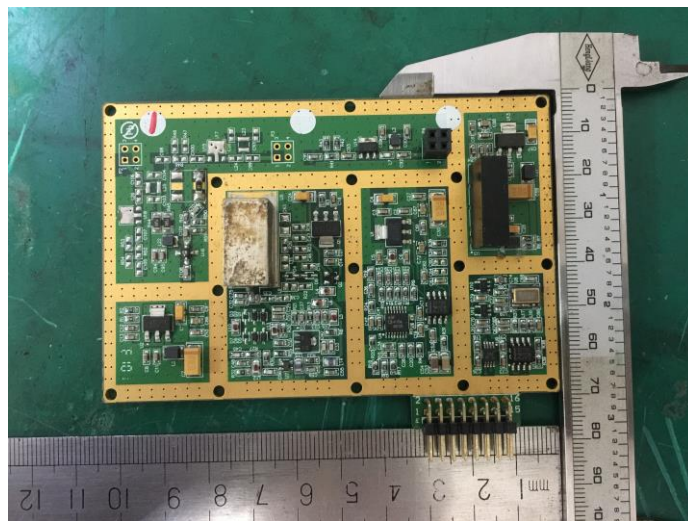
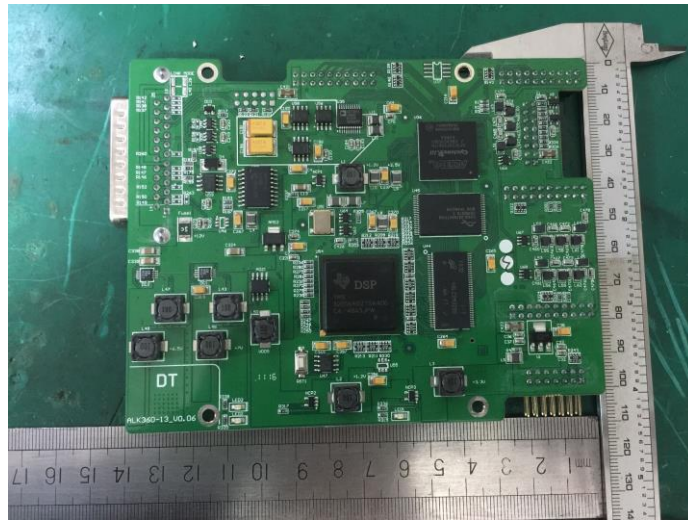


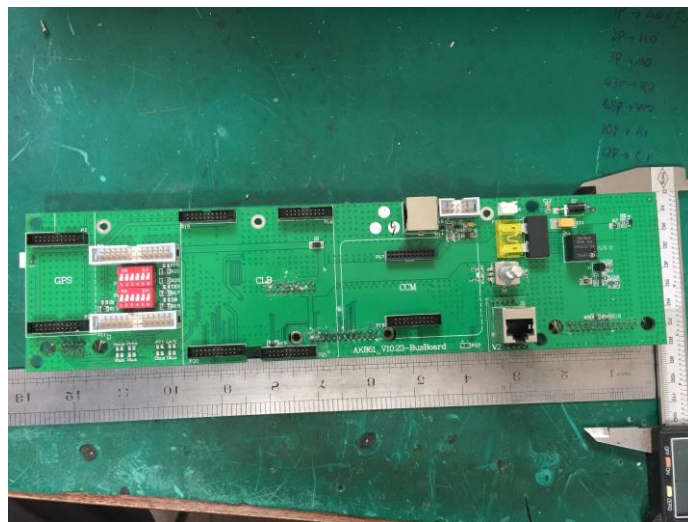
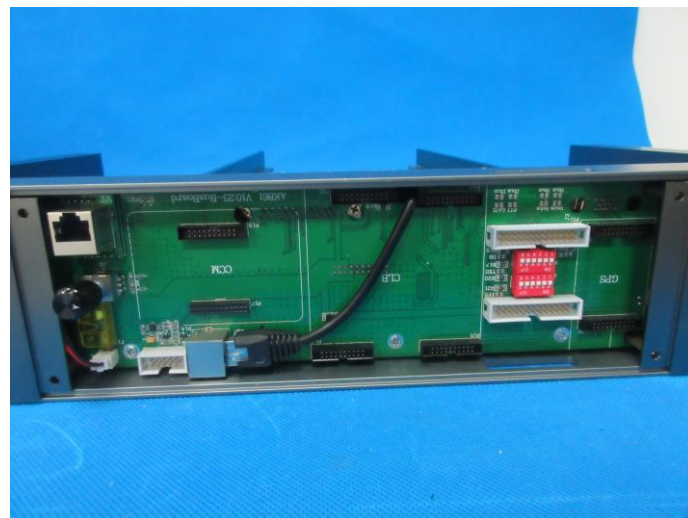
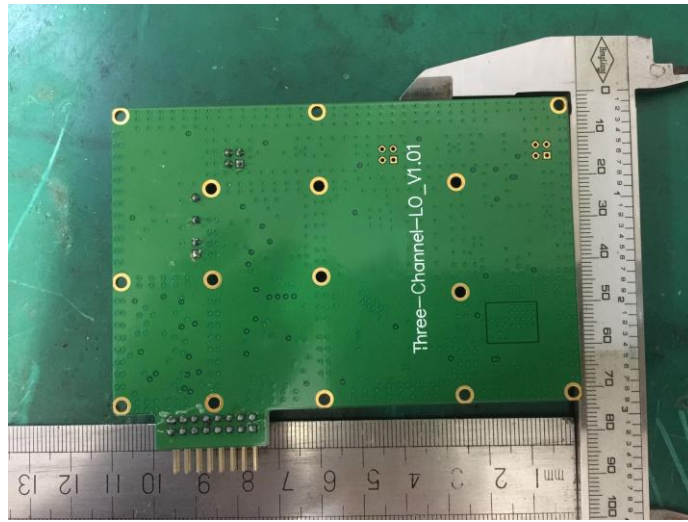


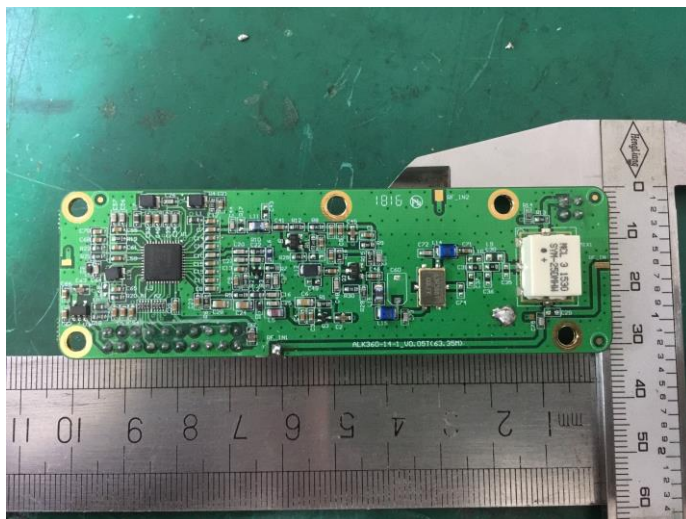
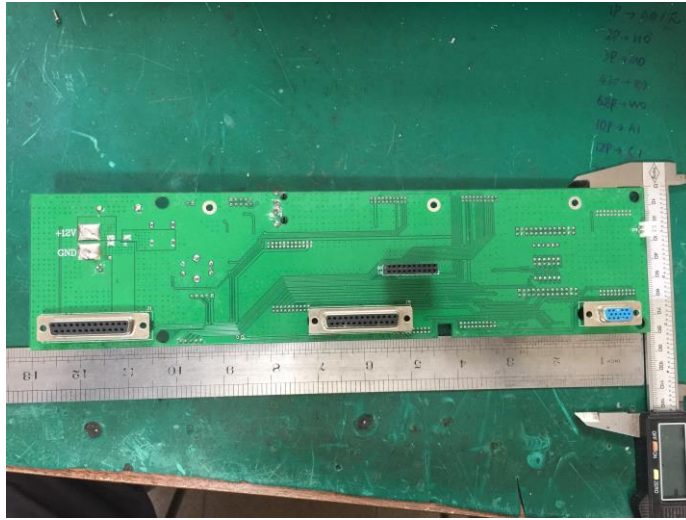












.....End of Report.....