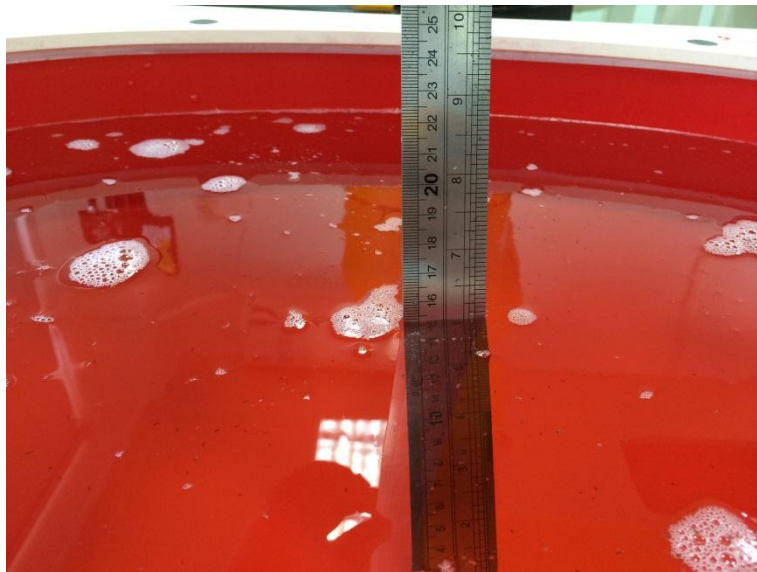
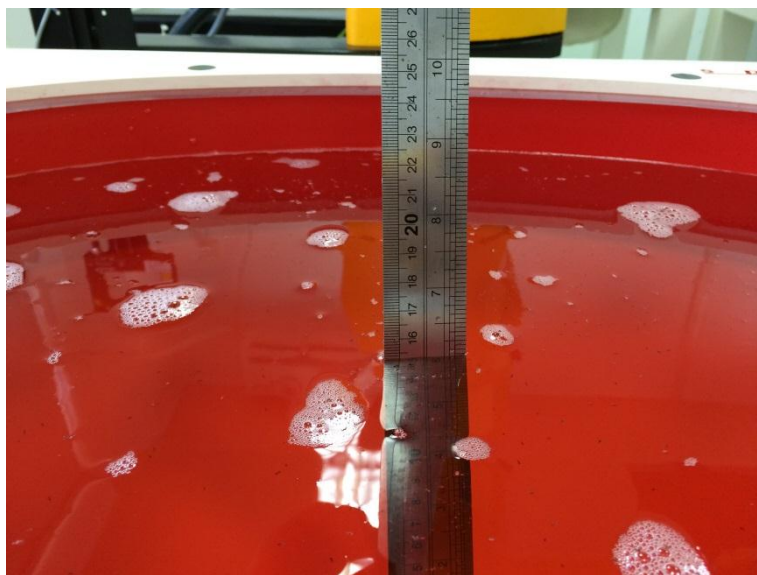


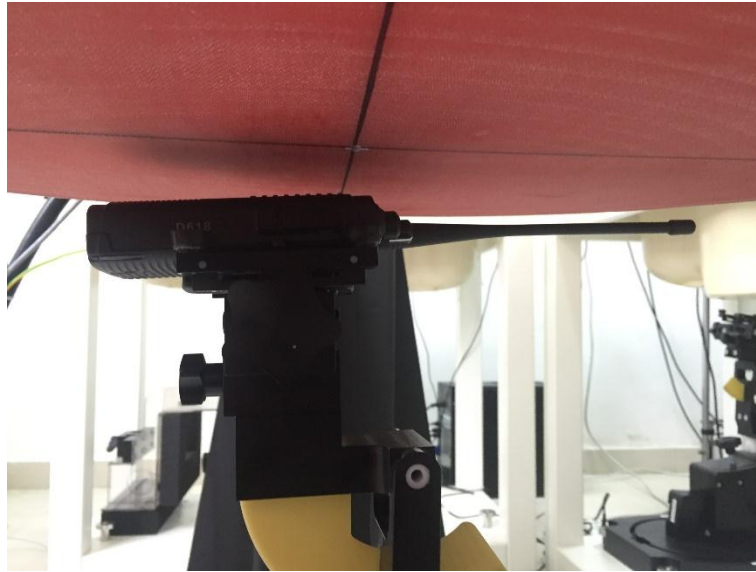
# 1. Test Setup Photos



**Photograph of the depth in the Head Phantom (450MHz)**



**Photograph of the depth in the Body Phantom (450MHz)**



**Face-held, the front of the EUT towards phantom**

*Antenna Distance (mm)*

Antenna Type	Separation Distance (mm)		
	@ front surface of the EUT	@ antenna's base	@ antenna's tip
A1	25.0	28.6	31.3



**Body-worn, the front of the EUT towards ground with A1, B1, BC1 and AC1**

*Antenna Distance (mm)*

Antenna Type	Separation Distance (mm)		
	@ back surface of the EUT	@ antenna's base	@ antenna's tip
A1	5.1	7.7	9.2

## 2. External Photos of the EUT and Accessory

### External Photos



B1- Battery, Intrinsically Safe Li-ion Battery (B02187400)



A1- External Antenna (AntD618H1)





BC1- Belt clip (SBC01)



AC1- Audio Accessories C-Earset with on-mic PTT (EA0303)

