

# Digital Broadcasting Device Datasheet

**Date: 2021-6-17**

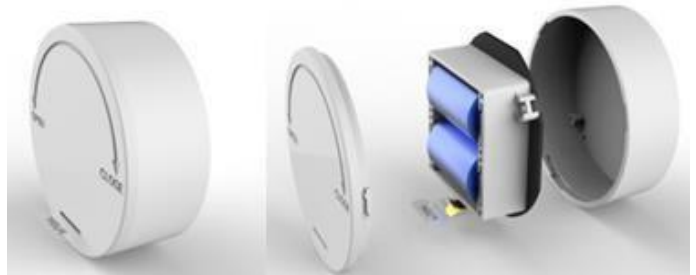
Part #	Description
E5	The Digital Broadcasting Device E5 with the latest BLE 5.0 and stable RSSI signal is specially used in indoor Locations for inventory tracking in different industries and route navigation in traveling attractions & shops.

## INTRODUCTION

E5 has a smart rotatable mechanical design for the housing that makes the battery replaceable easily and quickly. Parameters can be configured via BeaconSET+ APP. It can be used for indoor location, retail promotion, activity monitoring, inventory tracking, and much more applications. Also, users can avoid accidentally switch off by a push button inside.

## FEATURE

- Advertise iBeacon & Eddystone simultaneously
- Replaceable battery 2400mAh
- Bluetooth® 5.0 chipset nRF52 series
- The max. 120 meters advertising distance
- Internal power ON/OFF push button
- Operation temperature -30 to 60°C



E5 Leading Beacon

## APPLICATION

- Indoor location
- Retail promotion
- Activity monitoring
- Inventory tracking

## ACCESSORY

- Double-sided adhesive

## ACTIVATE E5

- Open the rotatable housing, pressing “push button” and keep holding on 3seconds;
- LED lights on 3 seconds and then off, the device be activated on;

## CONFIGURATION TOOL

- BeaconSET+ (iOS & Android)

## FIRMWARE UPGRADE

1. J-LINK Programmer Kit;
2. Programming ports definition;
3. OTA Available

Please contact MINEW sales team to ask for more related information if needed.

## ELECTRONIC PARAMETER

Item	Value	Remarks
Case Color	white	Other colors can be customized
Battery Model	Lithium Battery	2400mAh
Operation Voltage	1.8-3.9V	DC
Transmission Current	5.3mA (peak current)	Tested at 0dBm transmission power
Transmission Range	120 meters	Maximum
Antenna	50ohm	On board / PCB Antenna
Size	Φ 50 x 20.5mm	50mm diameter, 20.5mm height

## PARAMETER SETTING

Each E5 Location Beacon has been pre-configured in the factory before the shipment. Here below is given the main parameters and default settings.

Type	Item	Default Settings
iBeacon	UUID (16 bytes)	E2C56DB5-DFFB-48D2-B060-D0F5A71096E0 (Proximity)
	Major (2 bytes)	0
	Minor (2 bytes)	0
	Measured Power	-59dBm9 (0xC5)
	Tx Power	0dBm
	Interval(ms)	900ms
UID (On)	Instance ID	random
	Namespace ID	00112233445566778899
	Measured Power	-24dBm(0xE8)
	Tx Power	0dBm
	Interval(ms)	2000ms
URL (On)	URL	http://www.minew.com
	Measured Power	-24dBm(0xE8)
	Tx Power	0dBm
	Interval(ms)	2000ms
TLM (On)	Electricity mV	By default
	Boot time	By default
	PDU packets	By default
	Measured power	-24dBm(0xE8)
	Tx power	0dBm
	Interval(ms)	4000ms
INFO (On)	Device name	E5
	Electricity	By default
	MAC address	Factory setting

	Measured power	-24dBm(0xE8)
	Tx power	-8dBm
	Interval(ms)	4000ms
Extra Function	Password	minew123(configurable)
	Connectable	Yes(it is configuration mode)
	Reset factory	available
	Update firmware	available

## COMPATIBILITY

Supporting device&system	Module of Supporting device
BLE	BLE4.2 and above
iOS7.0 and above	iPhone4S, iPhone5/5C/5S iPhone6/6Plus/6S/6SPlus, iPhone7/7Plus iPad mini/mini2/4/Air/pro, etc.
Android4.3 and above	Samsung Xiaomi ,Huawei ,OnePlus, Vivo, OPPO, etc.

## PACKING INFORMATION



Details	Inner Box(Battery included)	Outer Box(Battery included)
Quantity(E5)	20pcs / box	200pcs / carton
Net Weight	0.78Kg	7.8Kg
Gross Weight	1.2Kg	12.5Kg
Size	30.5 x 11 x 7.2 cm	32 x 23.5 x 40 cm

## CERTIFICATION

- iBeacon MFi License (iBC-14-00582)
- FCC Regulation available
- CE Regulations available

## DECLARATION

The contents of this datasheet are subject to change without prior notice for further improvement. Minew team reserves the right to explain all the terms of this datasheet.

## FCC Requirement

changes or modifications not expressly approved by the party responsible for compliance could void the user's authority to operate the equipment.

This device complies with Part 15 of the FCC Rules. Operation is subject to the following two conditions:

- (1) this device may not cause harmful interference, and
- (2) this device must accept any interference received, including interference that may cause undesired operation.

Note: This equipment has been tested and found to comply with the limits for a Class B digital device, pursuant to Part 15 of the FCC Rules. These limits are designed to provide reasonable protection against harmful interference in a residential installation. This equipment generates, uses, and can radiate radio frequency energy, and if not installed and used in accordance with the instructions, may cause harmful interference to radio communications. However, there is no guarantee that interference will not occur in a particular installation. If this equipment does cause harmful interference to radio or television reception, which can be determined by turning the equipment off and on, the user is encouraged to try to correct the interference by one or more of the following measures:

- Reorient or relocate the receiving antenna.
- Increase the separation between the equipment and receiver.
- Connect the equipment into an outlet on a circuit different from that to which the receiver is connected.
- Consult the dealer or an experienced radio/TV technician for help.

The device has been evaluated to meet general RF exposure requirement. The device can be used in portable exposure condition without restriction

## CONTACT

Manufacturer: Shenzhen Minew Technologies Co., Ltd.

Phone: +86 (755) 2103 8160

Email: [info@minew.com](mailto:info@minew.com)

Address: 3<sup>rd</sup> Floor, I Building, Gangzhilong Science Park,  
QingLong Road, Longhua District,  
Shenzhen 518109  
China

<https://www.minew.com>

<End>